

# HORIZON ANNEX

560 Brook Ave., Bronx, New York 10455

## Bronx Community Board 1

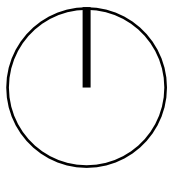
Design Update

May 14, 2025



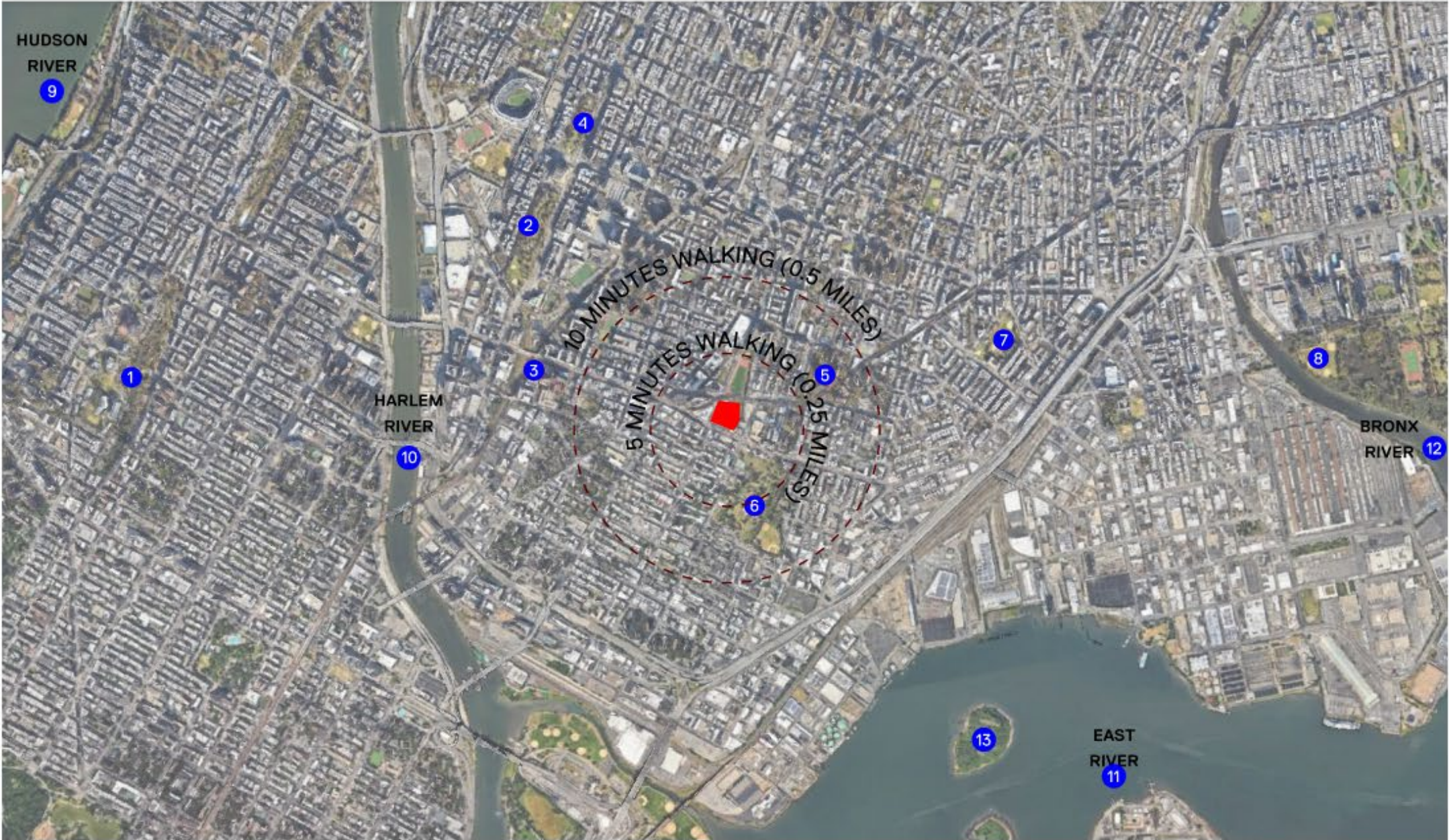


# SITE WITHIN BOROUGH



There are several public parks that are easy to access from the site. The site sits between Hudson River and East River. It is approximately a 26 minute walk to the see the Hudson River and 42 minute walk to see the East River.

- |    |                           |
|----|---------------------------|
| 1  | St. Nicholas Park         |
| 2  | Frank Sigel Park          |
| 3  | Governor Smith Playground |
| 4  | Joyce Kilmer Park         |
| 5  | Captain Rivera Playground |
| 6  | St. Mary's Park           |
| 7  | Bill Rainey Park          |
| 8  | Soundview Park            |
| 9  | Hudson River              |
| 10 | Harlem River              |
| 11 | East River                |
| 12 | Bronx River               |
| 13 | North Brother Island      |





# Project Overview



1. St. Ann's Ave. & Westchester Ave.



2. Brooke and E 149th St.

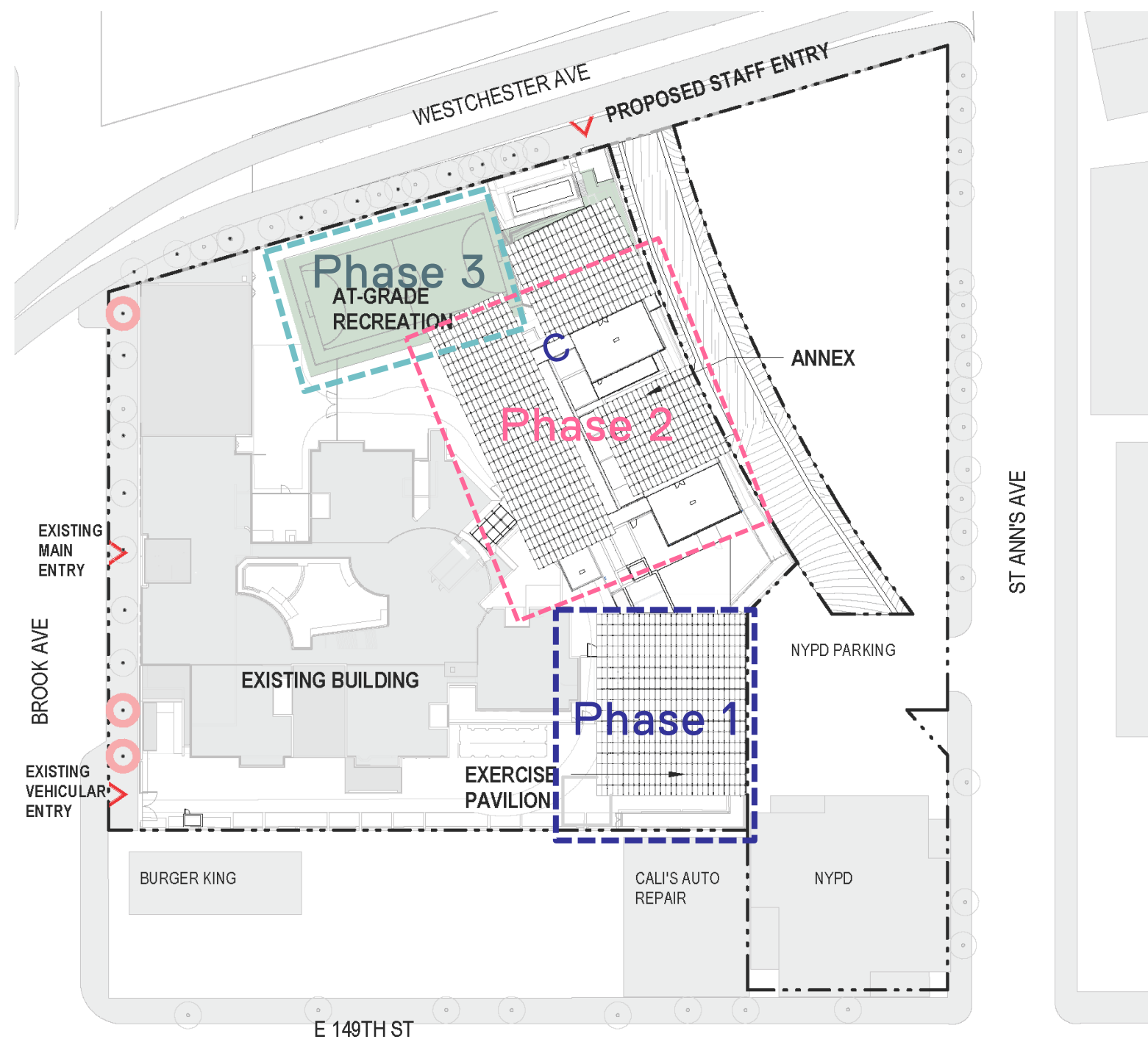


3. Elevated Subway at Westchester





# Project Overview



- **Project consists of 3 Phases**
  - Phase 1 (Exercise Pavilion)
  - Phase 2 (Annex Building)
  - Phase 3 (Sports Field)
- **Facility will provide:**
  - Outdoor Activity Space
  - Housing Space
  - Youth Education and Training
  - Medical and Dining Support Spaces
  - Staff and Security Services
- **Phase 1 Target Completion Q3 2026**
- **Phase 2/3 Target completion Q1 2029**

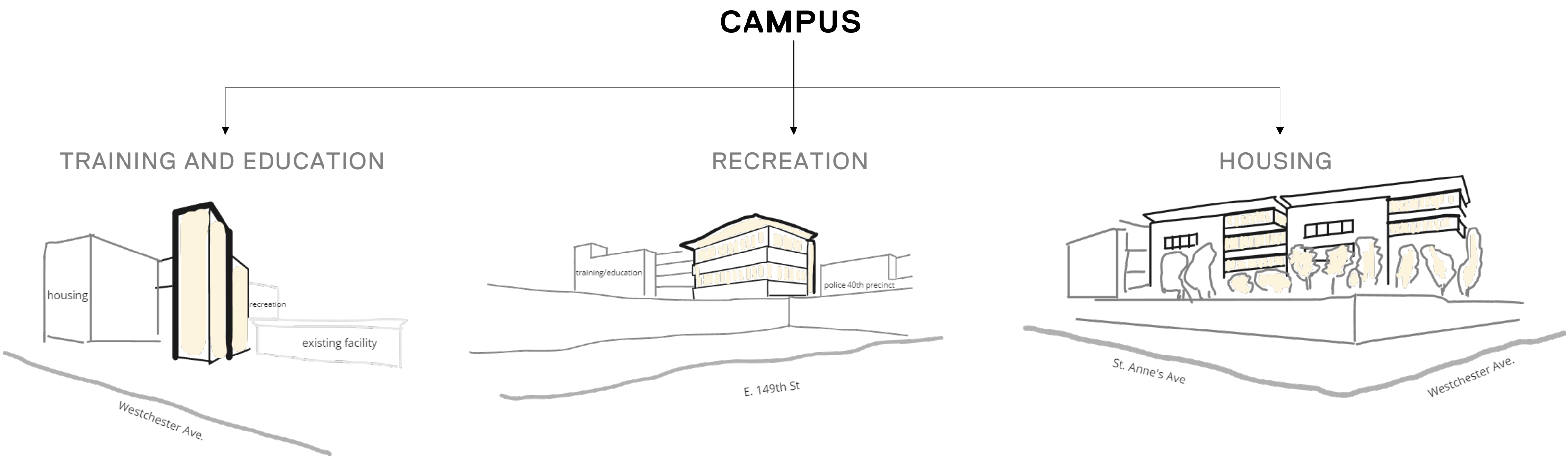
# Design Drivers



## 1. A positive integration into the neighborhood community.

- Adopt a new visual language for the project typology as a rehabilitative campus
- Respect the context and scale of the neighborhood with building massing that reflect the adjacent properties

# Design Drivers

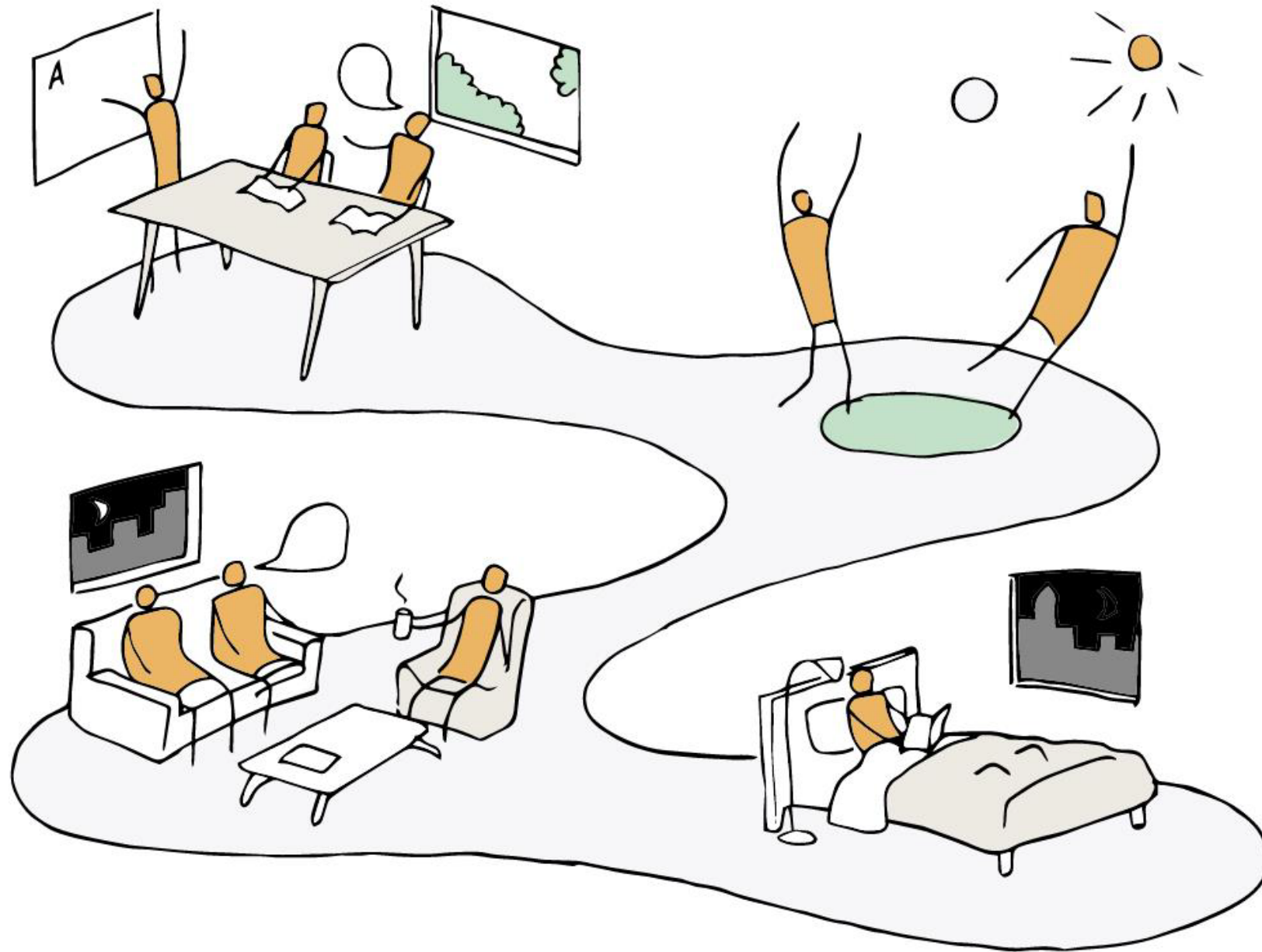








# Design Drivers



## 2. A dignified, normative, environment, balancing privacy, community and security.

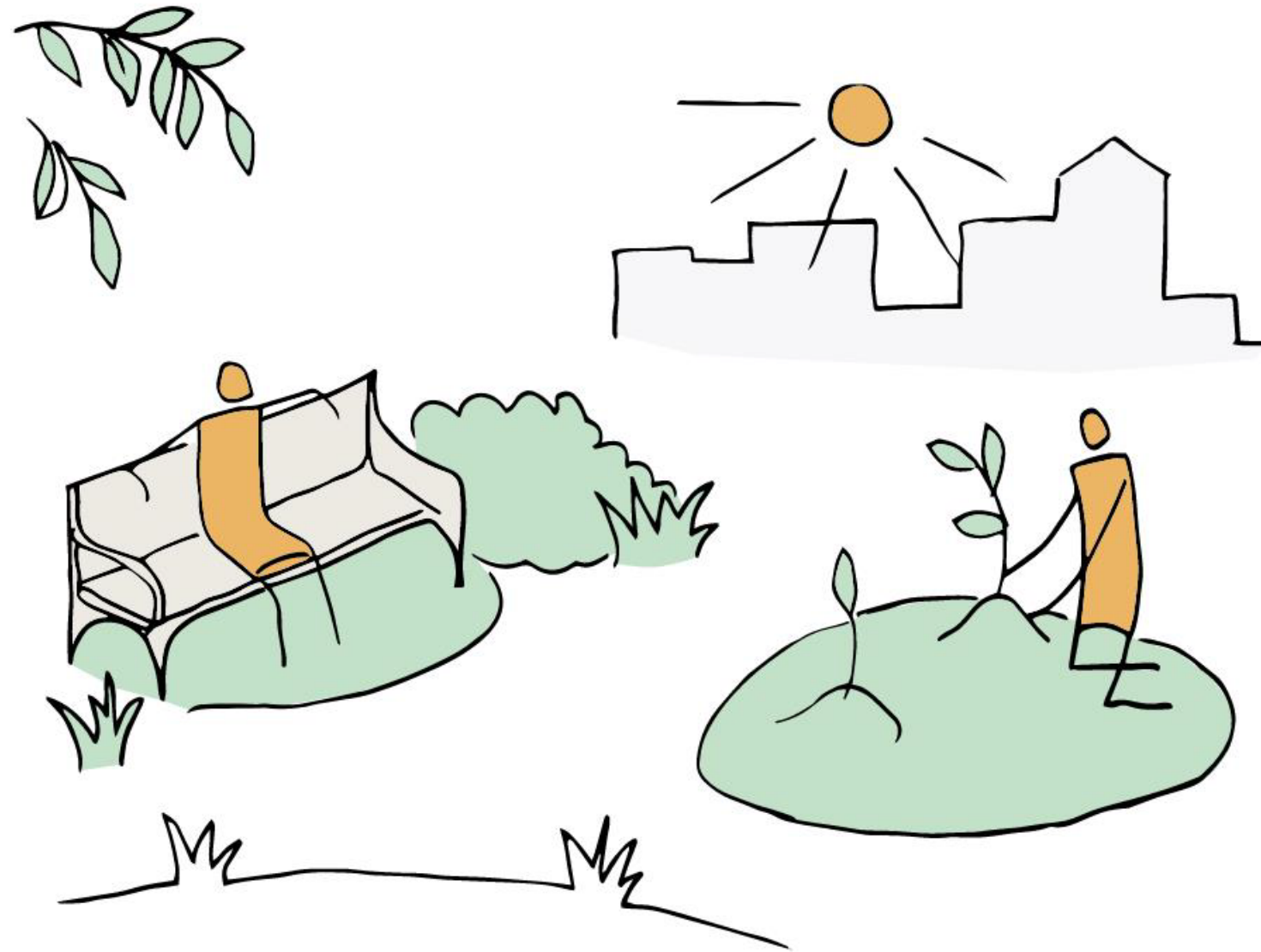
- Warm, dignified and generously sized living quarters that resemble a school or campus setting
- Maximizing views and connection to nature
- Campus like environment, with connected buildings that allow for movement between activities







# Design Drivers



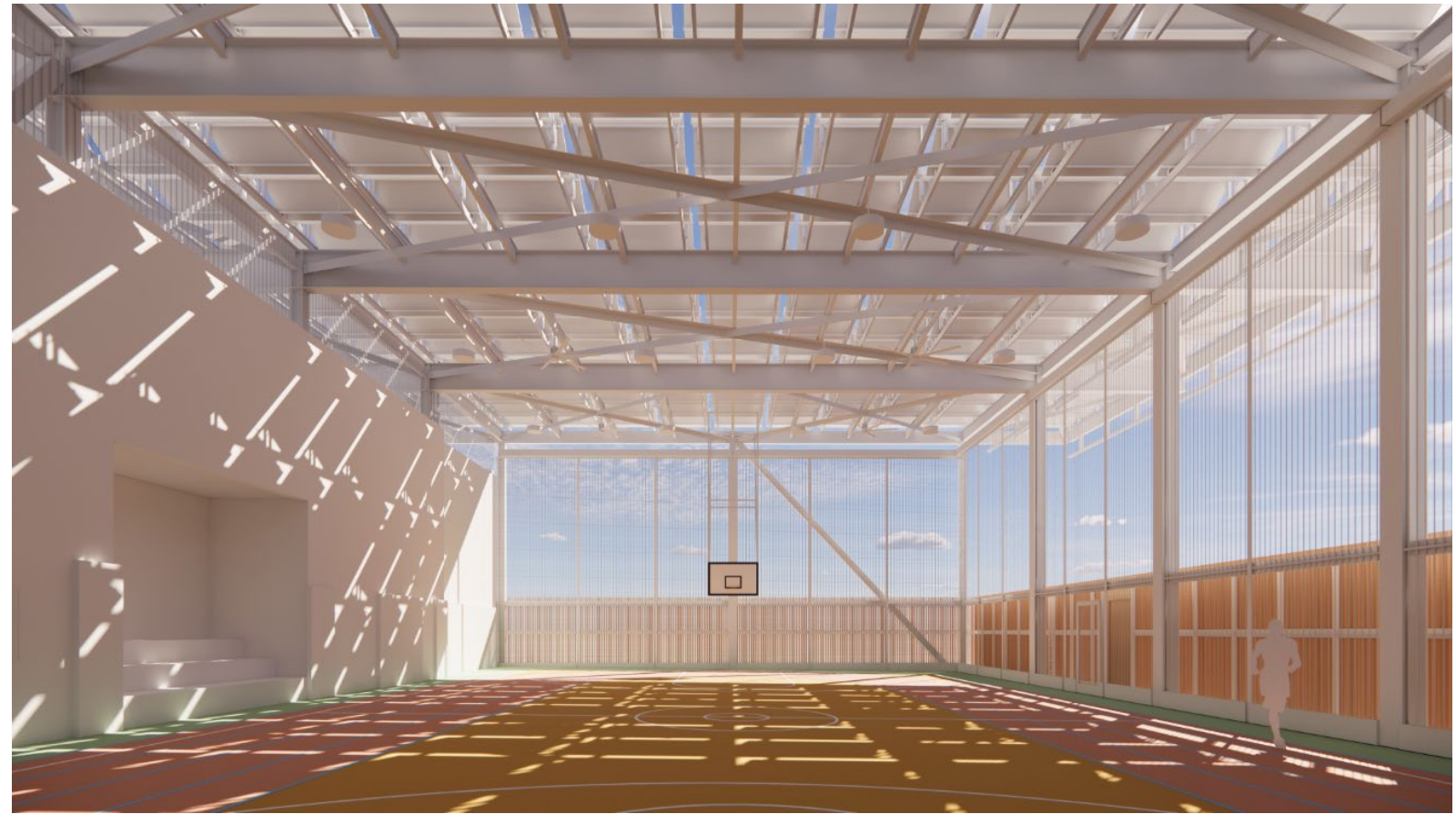
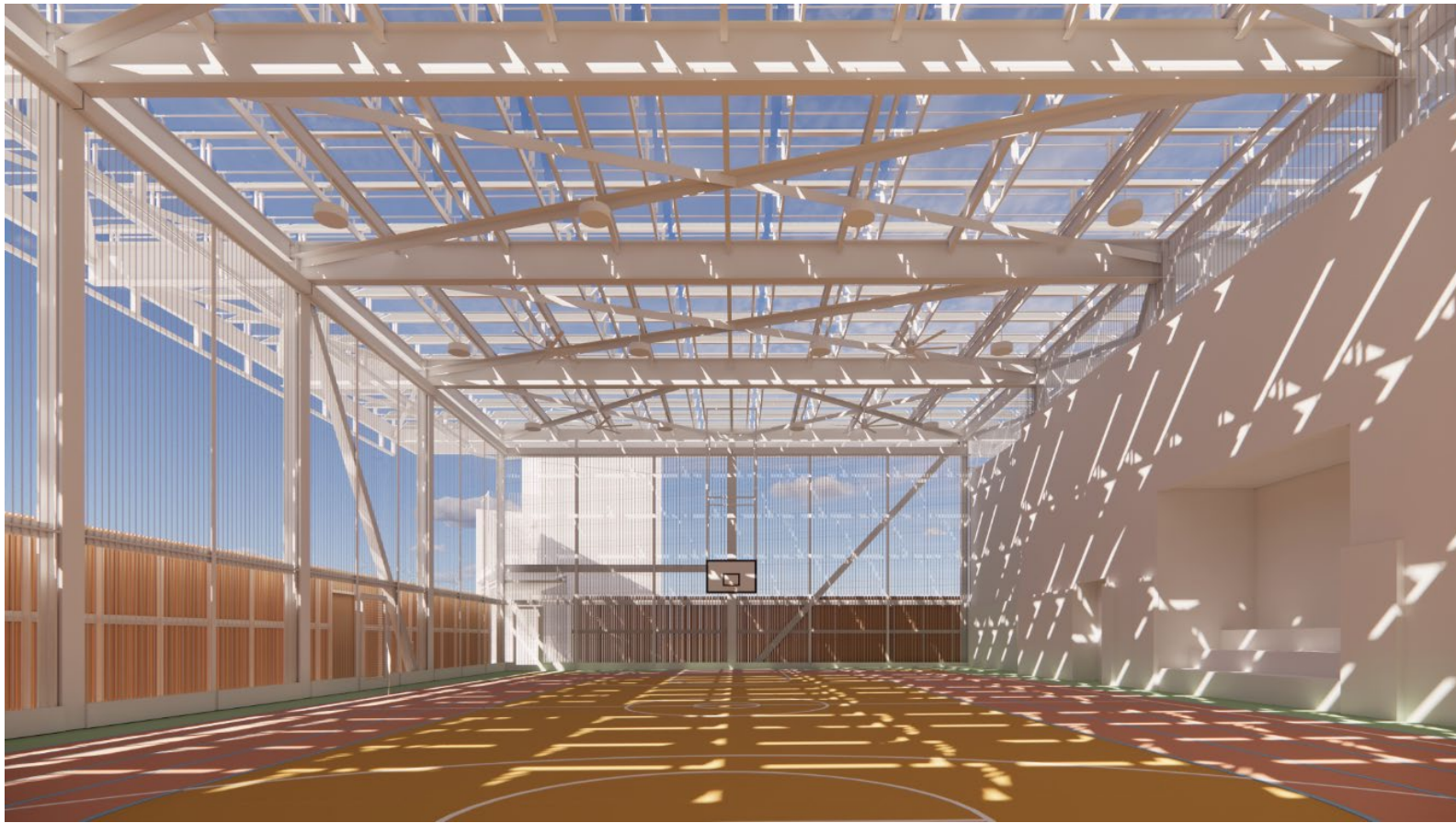
## 3. Harnessing the restorative impacts of nature and connection to the outdoors.

- Access to natural sunlight and fresh air.
- Maximizing Views to the outside.
- Generously sized and easily accessible outdoor spaces for recreational use.
- Biophilic design principles







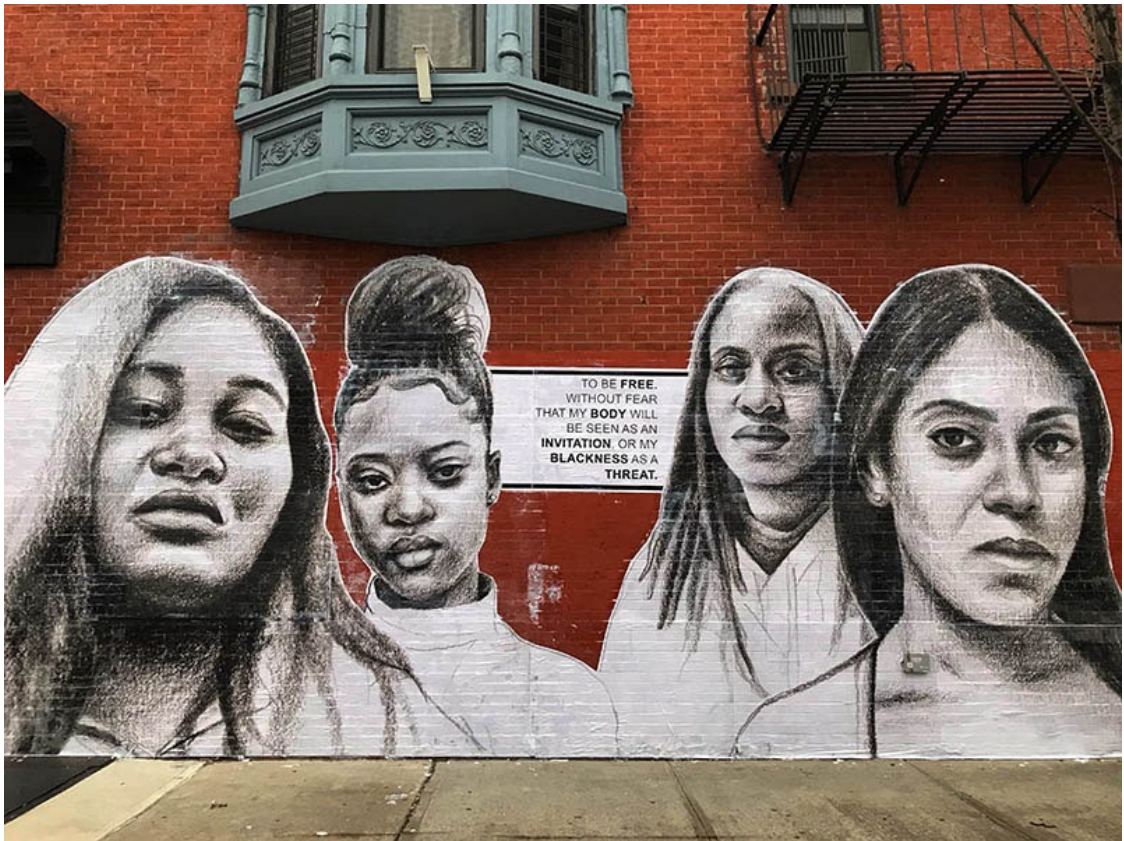




**Public Art:**  
-Percent for Art Update  
-Possible architecture/artist  
collaboration for Phase 1 EP Facade



# Integration of Art

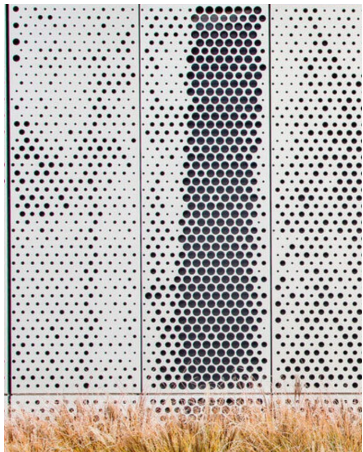


Tatyana Fazlalizadeh  
Artist selected for % for Art

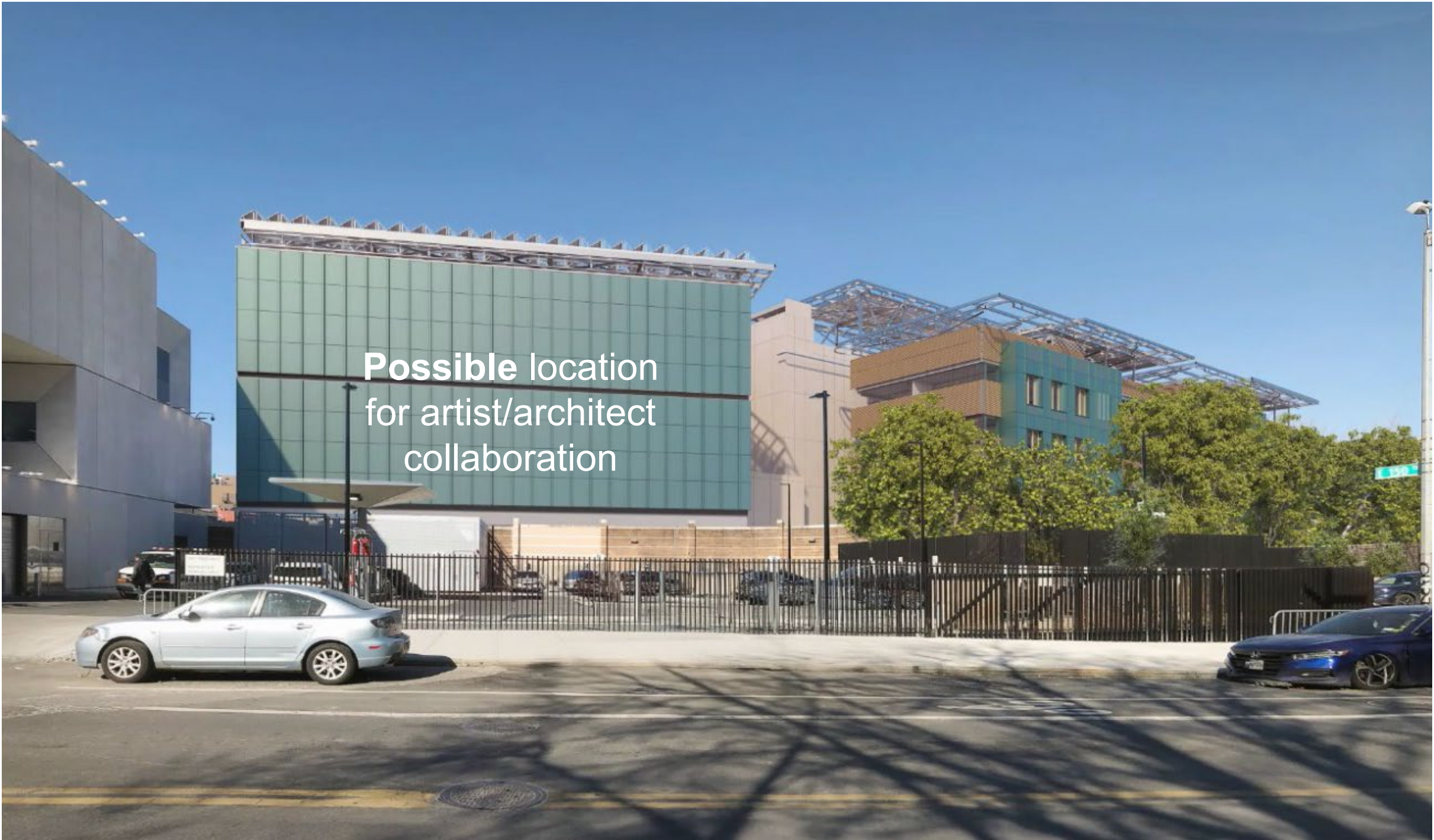


# Integration of Art

## Exercise Pavilion Perforated Aluminum Panels with Colored Backing



Aluminum panel rain-screen with custom graphic and possibility of color-backing.  
For the graphic, the architecture team intends to collaborate with the selected Percent for Art artist Tatyana Fazlalizadeh for this wall.





# CONTACT

**Anna Killion**

Outreach Coordinator  
Office of Communication and Policy  
Public Buildings/ Borough-Based Jails Program  
NYC Department of Design and Construction  
[KillionAn@ddc.nyc.gov](mailto:KillionAn@ddc.nyc.gov)  
Phone #: (718) 391-1973 Mobile #: (347) 374-0930

**Norberto Acevedo**

Director  
Office of Community Outreach & Notification, Public Buildings  
NYC Department of Design and Construction  
[acevedono@ddc.nyc.gov](mailto:acevedono@ddc.nyc.gov)  
Phone #: (718) 391-2102 Mobile #: (347) 242-9371

**Stephanie Gendell**

Deputy Commissioner, External Affairs  
NYC Administration for Children’s Services  
[Stephanie.gendell@acs.nyc.gov](mailto:Stephanie.gendell@acs.nyc.gov)  
Phone #: (212) 341-3554



# THANK YOU

