

Executive Summary

During construction activities for the Reconstruction of Sunset Park North Section of Brooklyn Waterfront Greenway, project ID SAND1048, New York City (NYC) Department of Design and Construction's (DDC) contractor conducted soil sampling pursuant to the regular agency protocol. During testing of 14 soil samples collected on May 14 and May 15, 2025, within the project area located at 2nd Avenue between 39th Street and 29th Street, 29th Street between 2nd Avenue and 3rd Avenue, and 26th Street from 2nd Avenue to approximately 209 feet southeast of 2nd Avenue, two (2) samples (SB-8 and SB-11) were found to contain hazardous levels of lead exceeding USEPA standards. Laboratory analysis was conducted by York Analytical Laboratories, Inc. on May 16, 2025, and transmitted to the Environmental Consultant, Applemon Corporation on June 12, 2025. This level was discovered on June 24, 2025, during the DDC review of analytical results by the contractor.

Lab analysis of sample SB-8 indicated TCLP lead was detected at a concentration of 26.900 mg/L which exceeds the USEPA Hazardous Waste Limit of 5.00 mg/L. Sample SB-8 was collected from a boring advanced to 10 feet below grade surface in a location to be excavated for the proposed sewer upgrade. Lab analysis of sample SB-11 indicated TCLP lead was detected at a concentration of 19.000 mg/L which exceeds the USEPA Hazardous Waste Limit of 5.00 mg/L. Sample SB-11 was collected from a boring advanced to 10 feet below grade surface in a location to be excavated for sewer installation.

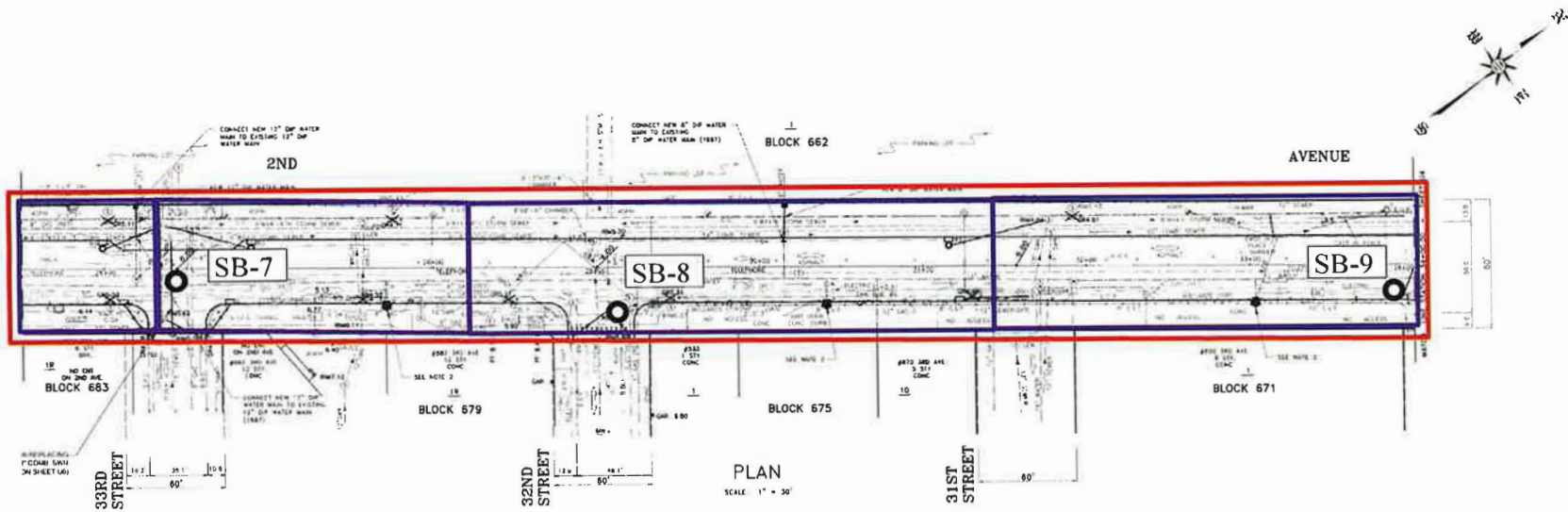
Due to these exceedances, on October 16, 2025, delineation soil sampling was performed in the vicinity of samples SB8 and SB11 to determine the extent of lead contamination at each sample location. An additional eight soil borings were collected to depths of 10 feet below grade to the north, south, east and west at each hazardous sample location (SB-8 and SB-11). These Delineation sample locations were spaced approximately 5 and 10 feet from the original sample locations. Delineation samples were collected and the initial 5 feet away samples were analyzed for total lead and TCLP lead by Phoenix Environmental Laboratories of Manchester, Connecticut to delineate the limits of hazardous material. The samples collected from 10 feet away were submitted to the lab and placed on hold and only analyzed if 5 feet samples were found to contain hazardous concentrations of lead. Using this methodology 9 of the 16 samples were analyzed for total lead and TCLP lead.

Location SB-8 had a total of 8 additional samples, 5 analyzed, with 3 samples having an exceedance of the USEPA limit, SB-8-D1 at 14.60 mg/L, SB-8-D5 at 30.40mg/L, and SB-8-D6 at 8.81 mg/L. Location SB-11 had a total of 8 samples, 4 analyzed, with none exceeding the USEPA limit. Delineation sample Laboratory analysis was conducted by Phoenix Environmental Laboratories of Manchester, Connecticut on October 16, 2025, and transmitted to the Environmental Consultant, American Environmental Solutions, Inc. on March 5, 2026. This level was discovered on April 17, 2026, during the DDC review of analytical results by the contractor.

The soil located at SB-8 and SB-11 is underground and undisturbed. Hazardous lead locations are shown on the attached figures. The impacted soil will be secured, removed and disposed to ensure public safety.

Contractor will perform all work in accordance with Material Handling Plan (MHP), Environmental Health and Safety Plan (EHASP) and Community Air Monitoring Plan (CAMP) as accepted by the NYC DDC.

The full project scope for SAND1048 consists of combined sewer and water main replacement, streetscape improvements, and site restoration. Project plans include construction of two-way bike lanes, pedestrian ramps, and installation of catch basins. The Scope of work also includes historic signage installation and trolley track preservation in the Sunset Park section of Brooklyn.



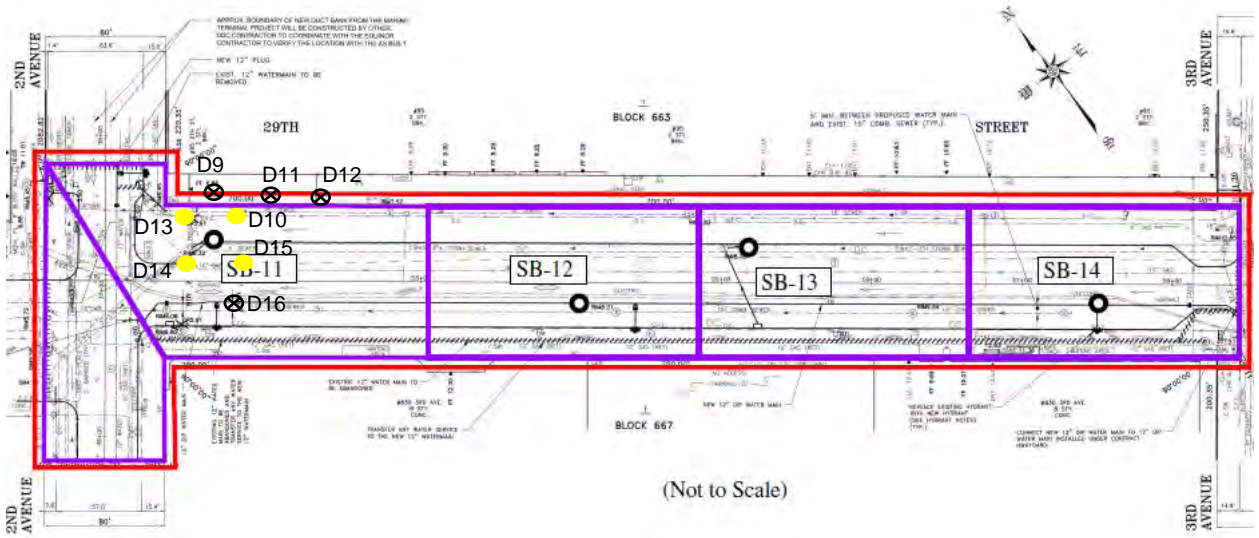
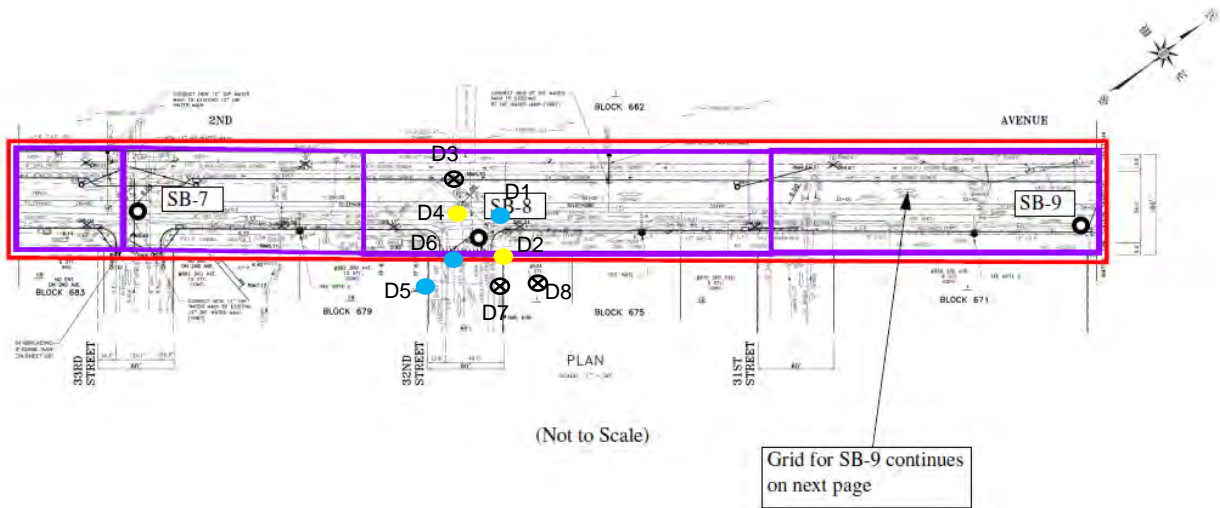
(Not to Scale)

**Figure 3. Soil Boring, Sample and Grid Location Plan
2nd Avenue between 33rd Street and 31st Street, Brooklyn, NY**

Area of Construction

Area of Grids (Segments)

● Soil Boring (SB)



- Soil boring location, May 2025
- ⊗ Haz lead delineation sample, not analyzed
- Haz lead sample location
- Non-Haz sample location

Delineation sampling locations proposed in the FSP had to be relocated due to utility interference.

SOIL SAMPLE LOCATIONS	
CAPITAL PROJECT SAND1048	RECONSTRUCTION OF SUNSET PARK, NORTH SECTION OF BROOKLYN WATERFRONT GREENWAY
American Environmental Solutions, Inc.	FIGURE 3