

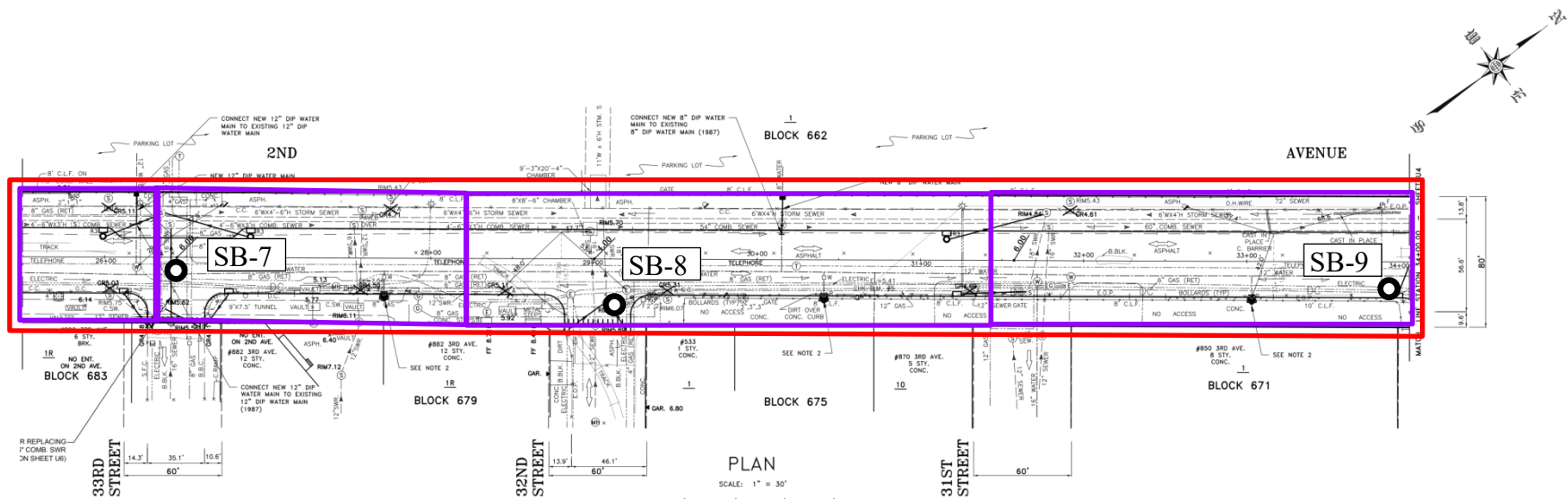
## **Executive Summary**

During construction activities for the Reconstruction of Sunset Park North Section of Brooklyn Waterfront Greenway, project ID SAND1048, New York City (NYC) Department of Design and Construction's (DDC) contractor conducted soil sampling pursuant to the regular agency protocol. During testing of 14 soil samples collected on May 14 and May 15, 2025, within the project area located at 2<sup>nd</sup> Avenue between 39<sup>th</sup> Street and 29<sup>th</sup> Street, 29<sup>th</sup> Street between 2<sup>nd</sup> Avenue and 3<sup>rd</sup> Avenue, and 26<sup>th</sup> Street from 2<sup>nd</sup> Avenue to approximately 209 feet southeast of 2<sup>nd</sup> Avenue, two (2) samples (SB-8 and SB-11) were found to contain hazardous levels of lead exceeding USEPA standards. Laboratory analysis was conducted by York Analytical Laboratories, Inc. on May 16, 2025 and transmitted to the Environmental Consultant, Applemon Corporation on June 12, 2025. This level was discovered on June 24, 2025 during the DDC review of analytical results by the contractor.

Lab analysis of sample SB-8 indicated TCLP lead was detected at a concentration of 26.900 mg/L which exceeds the USEPA Hazardous Waste Limit of 5.00 mg/L. Sample SB-8 was collected from a boring advanced to 10 feet below grade surface in a location to be excavated for the proposed sewer upgrade. Lab analysis of sample SB-11 indicated TCLP lead was detected at a concentration of 19.000 mg/L which exceeds the USEPA Hazardous Waste Limit of 5.00 mg/L. Sample SB-11 was collected from a boring advanced to 10 feet below grade surface in a location to be excavated for sewer installation. The soil located at SB-8 and SB-11 is underground and undisturbed. Hazardous lead locations are shown on the attached figures. The impacted soil will be secured, removed and disposed to ensure public safety.

Prior to removal and disposal, the contractor will provide Material Handling Plan (MHP), Environmental Health and Safety Plan (EHASP) and Community Air Monitoring Plan (CAMP) for review and acceptance pursuant to DDC guidelines, as well as all applicable State and Federal regulations. Contractor will perform all work in accordance with Material Handling Plan (MHP), Environmental Health and Safety Plan (EHASP) and Community Air Monitoring Plan (CAMP) as accepted by the NYC DDC.

The full project scope for SAND1048 consists of combined sewer and water main replacement, streetscape improvements, and site restoration. Project plans include construction of two-way bike lanes, pedestrian ramps, and installation of catch basins. The Scope of work also includes historic signage installation and trolley track preservation in the Sunset Park section of Brooklyn.



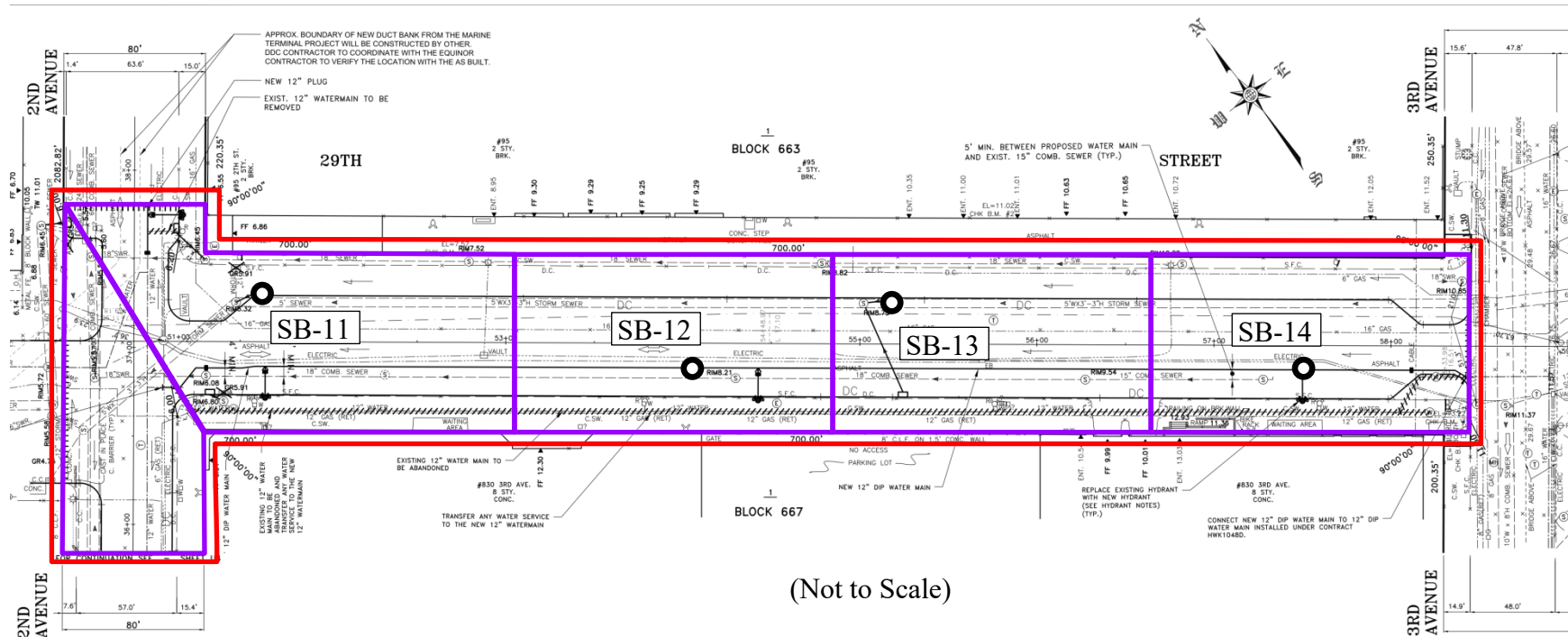
(Not to Scale)

**Figure 3. Soil Boring, Sample and Grid Location Plan**  
**2nd Avenue between 33rd Street and 31st Street, Brooklyn, NY**

Area of Construction

Area of Grids (Segments)

● Soil Boring (SB)



**Figure 3. Soil Boring, Sample and Grid Location Plan**  
**29th Street between 2nd Avenue and 3rd Avenue, Brooklyn, NY**

Area of Construction

Area of Grids (Segments)

● Soil Boring (SB)