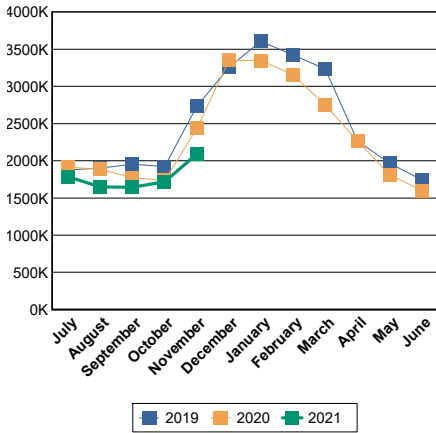
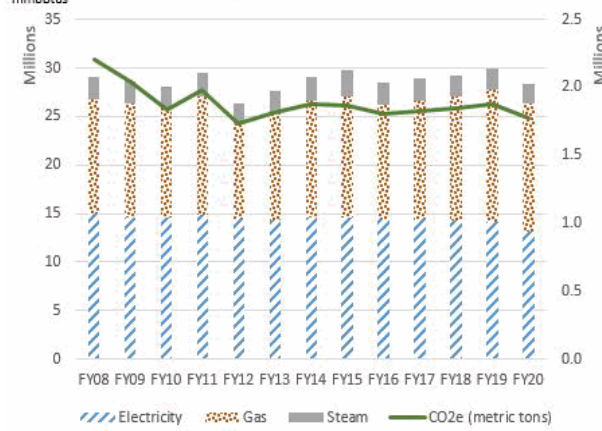


Energy Dashboard Report - December 2020

Citywide Utility Energy Usage in BTU



Utility Energy and Carbon Emissions by FY



- Bar chart covers utility energy for City government buildings and operations (excluding transportation). Utility energy data are from citywide billings handled through DCAS.
- The FY20 utility energy total was 28.2 million mmBtus and 1.77 million metric tons of CO2e.

Energy Usage (From Utility Purchases): Data below are from monthly utility bills for electricity, natural gas, and steam. Usage is for the month and fiscal year-to-date indicated, expressed as mmBtus (millions of British thermal units). Late billings may impact totals for selected agencies.

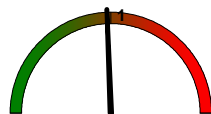
Usage is reported as a group for libraries, cultural institutions, and smaller City agencies (Other). Relative size is % of FY20 total. More detailed reports, including Citywide CORE and Agency CORE reports, are sent to agency energy liaison officers and are available through the DCAS EC3 energy reporting system.

* In millions of Btus (mmBtus) for electricity, natural gas, and steam

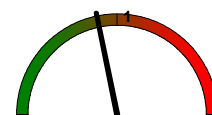
	Relative Size [% of Total]	December			Year To Date		
		FY 20	FY 21	-- % Change --	FY 20	FY 21	--% Change --
CITY GOVERNMENT TOTAL		3,350,364	2,957,045	-11.7%	13,099,902	11,869,033	-9.4%
Department of Education	24.3%	926,940	854,037	-7.9%	3,099,481	2,727,322	-12.0%
Health and Hospitals Corporation	13.7%	386,769	349,852	-9.5%	1,861,760	1,795,717	-3.5%
Department of Environmental Protection	12.8%	373,955	351,507	-6.0%	1,697,496	1,658,798	-2.3%
City University of New York - Senior Colleges	9.2%	311,704	260,434	-16.4%	1,296,815	1,129,962	-12.9%
Department of Correction	6.7%	240,472	154,133	-35.9%	844,997	716,413	-15.2%
Department of Sanitation	3.9%	158,080	139,911	-11.5%	399,901	359,849	-10.0%
Department of Citywide Administrative Services	3.7%	133,522	123,247	-7.7%	506,296	468,595	-7.4%
Department of Transportation	3.2%	103,230	98,917	-4.2%	489,984	485,002	-1.0%
Police Department	2.9%	96,104	91,192	-5.1%	360,545	356,663	-1.1%
City University of New York - Community Colleges	2.7%	100,610	86,320	-14.2%	370,636	265,735	-28.3%
Department of Social Services	2.0%	70,445	64,863	-7.9%	257,298	234,888	-8.7%
Department of Parks and Recreation	1.8%	67,942	60,607	-10.8%	212,805	187,049	-12.1%
Fire Department	1.5%	51,561	44,017	-14.6%	182,627	172,453	-5.6%
Department of Health and Mental Hygiene	1.0%	26,568	19,727	-25.7%	145,277	110,400	-24.0%
Administration for Children's Services	0.3%	11,039	9,613	-12.9%	56,765	48,071	-15.3%
Cultural Institutions	5.6%	170,226	141,067	-17.1%	778,704	666,143	-14.5%
Libraries	1.4%	47,315	40,987	-13.4%	195,862	171,736	-12.3%
Other	3.1%	73,884	66,615	-9.8%	342,655	314,237	-8.3%

Degree Days are a weather indicator. Heating and cooling degree days are the cumulative monthly difference in daily temperature from a reference temperature of 65 degrees (designated as the temperature at which neither heating nor cooling is needed). A dial value > 1 means greater energy needs as compared to the prior period. (In spring and fall, small year-to-year changes in degree days can appear large on the dial without having a major impact on energy use.) Even when weather causes increases in energy usage, agencies should still aim to drive down usage.

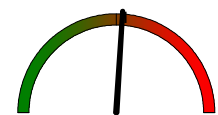
Degree Days	Heating	Cooling
YTD Current FY	1,393	1,102
YTD Prior FY	1,599	1,060
December FY21	793	0
December FY20	813	0



Monthly HDD Ratio:
Current Yr/Prior Yr



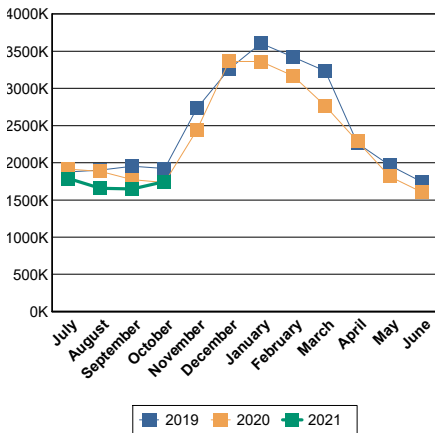
YTD HDD Ratio: Current
Yr/Prior Yr



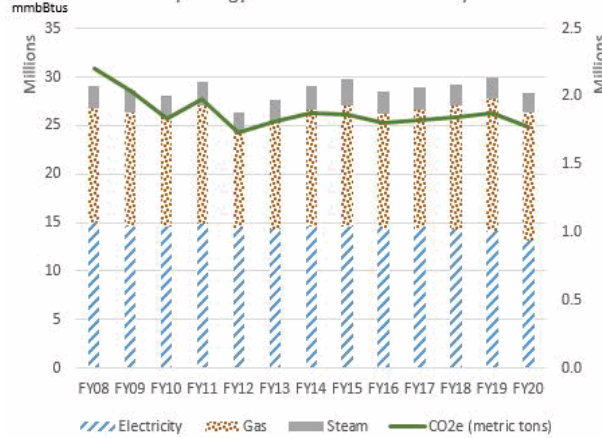
YTD CDD Ratio: Current
Yr/Prior Yr

Energy Dashboard Report - November 2020

Citywide Utility Energy Usage in BTU



Utility Energy and Carbon Emissions by FY



- Bar chart covers utility energy for City government buildings and operations (excluding transportation). Utility energy data are from citywide billings handled through DCAS.
- The FY20 utility energy total was 28.2 million mmBtus and 1.77 million metric tons of CO2e.

Energy Usage (From Utility Purchases): Data below are from monthly utility bills for electricity, natural gas, and steam. Usage is for the month and fiscal year-to-date indicated, expressed as mmBtus (millions of British thermal units). Late billings may impact totals for selected agencies.

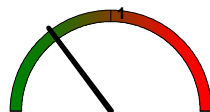
Usage is reported as a group for libraries, cultural institutions, and smaller City agencies (Other). Relative size is % of FY20 total. More detailed reports, including Citywide CORE and Agency CORE reports, are sent to agency energy liaison officers and are available through the DCAS EC3 energy reporting system.

* In millions of Btus (mmBtus) for electricity, natural gas, and steam

	Relative Size [% of Total]	November			Year To Date		
		FY 20	FY 21	-- % Change --	FY 20	FY 21	--% Change --
CITY GOVERNMENT TOTAL		2,434,318	2,092,155	-14.1%	9,744,678	8,888,390	-8.8%
Department of Education	24.3%	620,864	563,136	-9.3%	2,170,370	1,865,692	-14.0%
Health and Hospitals Corporation	13.7%	290,458	293,844	1.2%	1,474,991	1,457,401	-1.2%
Department of Environmental Protection	12.8%	318,175	269,417	-15.3%	1,319,556	1,282,522	-2.8%
City University of New York - Senior Colleges	9.2%	234,857	202,383	-13.8%	985,033	866,940	-12.0%
Department of Correction	6.7%	157,243	101,080	-35.7%	604,526	560,721	-7.2%
Department of Sanitation	3.9%	102,830	80,458	-21.8%	243,487	222,024	-8.8%
Department of Citywide Administrative Services	3.7%	101,349	79,091	-22.0%	372,774	335,652	-10.0%
Department of Transportation	3.2%	85,225	80,964	-5.0%	386,754	384,799	-0.5%
Police Department	2.9%	68,525	58,390	-14.8%	264,629	266,332	0.6%
City University of New York - Community Colleges	2.7%	78,836	50,310	-36.2%	270,026	181,248	-32.9%
Department of Social Services	2.0%	48,779	42,889	-12.1%	185,180	170,880	-7.7%
Department of Parks and Recreation	1.8%	44,418	35,797	-19.4%	145,351	125,426	-13.7%
Fire Department	1.5%	33,536	27,836	-17.0%	131,081	129,234	-1.4%
Department of Health and Mental Hygiene	1.0%	19,548	14,584	-25.4%	119,235	89,853	-24.6%
Administration for Children's Services	0.3%	7,847	7,189	-8.4%	45,726	38,598	-15.6%
Cultural Institutions	5.6%	129,789	110,293	-15.0%	608,488	533,422	-12.3%
Libraries	1.4%	33,774	28,613	-15.3%	148,751	131,773	-11.4%
Other	3.1%	58,265	45,882	-21.3%	268,721	245,873	-8.5%

Degree Days are a weather indicator. Heating and cooling degree days are the cumulative monthly difference in daily temperature from a reference temperature of 65 degrees (designated as the temperature at which neither heating nor cooling is needed). A dial value > 1 means greater energy needs as compared to the prior period. (In spring and fall, small year-to-year changes in degree days can appear large on the dial without having a major impact on energy use.) Even when weather causes increases in energy usage, agencies should still aim to drive down usage.

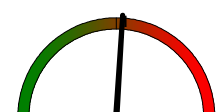
Degree Days	Heating	Cooling
YTD Current FY	600	1,102
YTD Prior FY	786	1,060
November FY21	365	3
November FY20	619	0



Monthly HDD Ratio:
Current Yr/Prior Yr



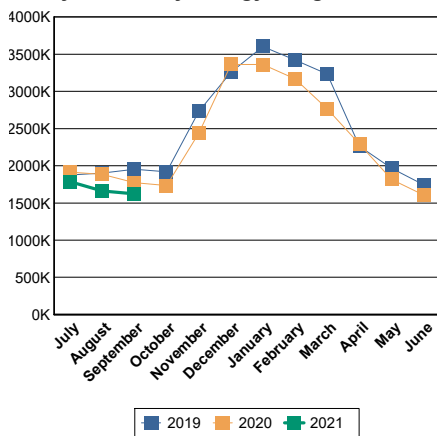
YTD HDD Ratio: Current
Yr/Prior Yr



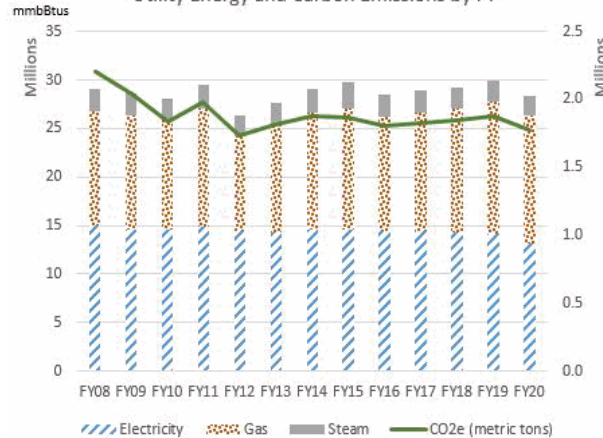
YTD CDD Ratio: Current
Yr/Prior Yr

Energy Dashboard Report - October 2020

Citywide Utility Energy Usage in BTU



Utility Energy and Carbon Emissions by FY



- Bar chart covers utility energy for City government buildings and operations (excluding transportation). Utility energy data are from citywide billings handled through DCAS.
- The FY20 utility energy total was 28.2 million mmBtus and 1.77 million metric tons of CO2e.

Energy Usage (From Utility Purchases): Data below are from monthly utility bills for electricity, natural gas, and steam. Usage is for the month and fiscal year-to-date indicated, expressed as mmBtus (millions of British thermal units). Late billings may impact totals for selected agencies.

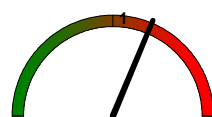
Usage is reported as a group for libraries, cultural institutions, and smaller City agencies (Other). Relative size is % of FY20 total. More detailed reports, including Citywide CORE and Agency CORE reports, are sent to agency energy liaison officers and are available through the DCAS EC3 energy reporting system.

* In millions of Btus (mmBtus) for electricity, natural gas, and steam

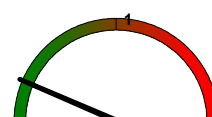
	Relative Size [% of Total]	October			Year To Date		
		FY 20	FY 21	-- % Change --	FY 20	FY 21	--% Change --
CITY GOVERNMENT TOTAL		1,735,621	1,746,654	0.6%	7,312,545	6,838,260	-6.5%
Department of Education	24.3%	380,987	364,147	-4.4%	1,551,261	1,315,594	-15.2%
Health and Hospitals Corporation	13.7%	289,620	267,712	-7.6%	1,184,532	1,149,591	-2.9%
Department of Environmental Protection	12.8%	248,478	303,880	22.3%	1,001,316	1,048,058	4.7%
City University of New York - Senior Colleges	9.2%	163,228	163,115	-0.1%	750,379	674,095	-10.2%
Department of Correction	6.7%	97,601	124,157	27.2%	447,283	476,595	6.6%
Department of Sanitation	3.9%	36,662	31,922	-12.9%	140,687	135,823	-3.5%
Department of Citywide Administrative Services	3.7%	58,521	49,815	-14.9%	271,425	239,381	-11.8%
Department of Transportation	3.2%	79,108	78,801	-0.4%	301,241	303,164	0.6%
Police Department	2.9%	44,957	53,071	18.0%	196,390	210,054	7.0%
City University of New York - Community Colleges	2.7%	42,039	31,796	-24.4%	191,190	130,981	-31.5%
Department of Social Services	2.0%	32,215	32,490	0.9%	136,808	130,303	-4.8%
Department of Parks and Recreation	1.8%	24,841	23,870	-3.9%	100,711	91,122	-9.5%
Fire Department	1.5%	20,812	23,092	11.0%	97,540	99,744	2.3%
Department of Health and Mental Hygiene	1.0%	18,435	13,127	-28.8%	99,687	76,295	-23.5%
Administration for Children's Services	0.3%	7,613	7,203	-5.4%	37,878	32,325	-14.7%
Cultural Institutions	5.6%	117,455	106,183	-9.6%	478,801	419,745	-12.3%
Libraries	1.4%	25,547	24,887	-2.6%	114,886	104,051	-9.4%
Other	3.1%	47,500	47,387	-0.2%	210,529	201,338	-4.4%

Degree Days are a weather indicator. Heating and cooling degree days are the cumulative monthly difference in daily temperature from a reference temperature of 65 degrees (designated as the temperature at which neither heating nor cooling is needed). A dial value > 1 means greater energy needs as compared to the prior period. (In spring and fall, small year-to-year changes in degree days can appear large on the dial without having a major impact on energy use.) Even when weather causes increases in energy usage, agencies should still aim to drive down usage.

Degree Days	Heating	Cooling
YTD Current FY	235	1,099
YTD Prior FY	167	1,060
October FY21	203	8
October FY20	162	31



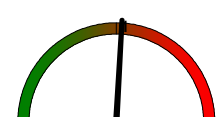
Monthly HDD Ratio:
Current Yr/Prior Yr



Monthly CDD Ratio:
Current Yr/Prior Yr



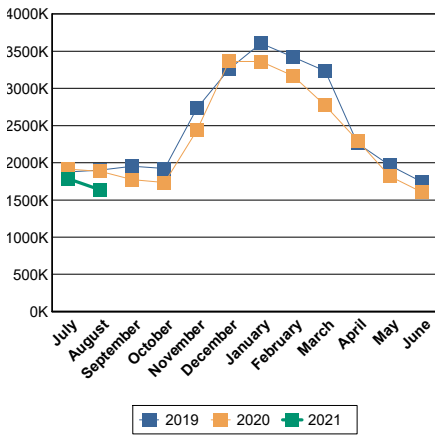
YTD HDD Ratio: Current
Yr/Prior Yr



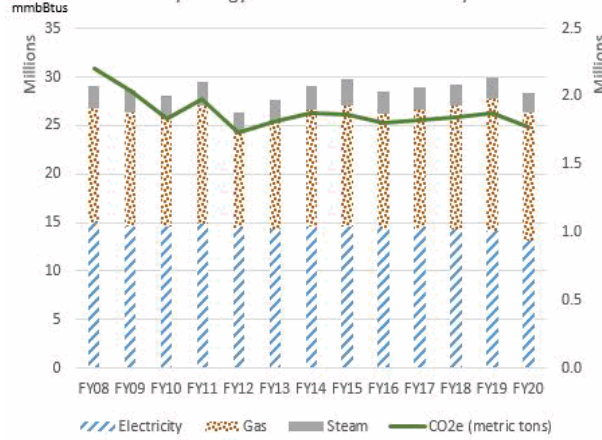
YTD CDD Ratio: Current
Yr/Prior Yr

Energy Dashboard Report - September 2020

Citywide Utility Energy Usage in BTU



Utility Energy and Carbon Emissions by FY



- Bar chart covers utility energy for City government buildings and operations (excluding transportation). Utility energy data are from citywide billings handled through DCAS.
- The FY20 utility energy total was 28.2 million mmBtus and 1.77 million metric tons of CO2e.

Energy Usage (From Utility Purchases): Data below are from monthly utility bills for electricity, natural gas, and steam. Usage is for the month and fiscal year-to-date indicated, expressed as mmBtus (millions of British thermal units). Late billings may impact totals for selected agencies.

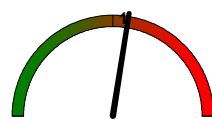
Usage is reported as a group for libraries, cultural institutions, and smaller City agencies (Other). Relative size is % of FY20 total. More detailed reports, including Citywide CORE and Agency CORE reports, are sent to agency energy liaison officers and are available through the DCAS EC3 energy reporting system.

* In millions of Btus (mmBtus) for electricity, natural gas, and steam

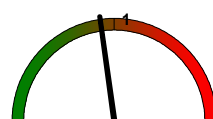
	Relative Size [% of Total]	September			Year To Date		
		FY 20	FY 21	-- % Change --	FY 20	FY 21	--% Change --
CITY GOVERNMENT TOTAL		1,772,930	1,623,303	-8.4%	5,573,588	5,070,980	-9.0%
Department of Education	24.3%	386,933	329,951	-14.7%	1,169,861	957,279	-18.2%
Health and Hospitals Corporation	13.7%	279,878	255,766	-8.6%	894,912	869,110	-2.9%
Department of Environmental Protection	12.8%	243,357	233,633	-4.0%	752,391	735,500	-2.2%
City University of New York - Senior Colleges	9.2%	178,769	169,029	-5.4%	586,557	512,378	-12.6%
Department of Correction	6.7%	108,268	118,397	9.4%	349,682	352,484	0.8%
Department of Sanitation	3.9%	32,603	31,569	-3.2%	102,081	99,705	-2.3%
Department of Citywide Administrative Services	3.7%	65,081	58,583	-10.0%	212,904	190,619	-10.5%
Department of Transportation	3.2%	75,595	74,619	-1.3%	222,153	224,187	0.9%
Police Department	2.9%	47,616	49,896	4.8%	151,433	156,826	3.6%
City University of New York - Community Colleges	2.7%	48,477	33,242	-31.4%	149,152	102,406	-31.3%
Department of Social Services	2.0%	31,138	30,309	-2.7%	104,593	98,396	-5.9%
Department of Parks and Recreation	1.8%	22,759	20,976	-7.8%	75,951	67,444	-11.2%
Fire Department	1.5%	22,428	23,019	2.6%	76,687	76,510	-0.2%
Department of Health and Mental Hygiene	1.0%	25,462	13,058	-48.7%	81,231	61,625	-24.1%
Administration for Children's Services	0.3%	9,162	7,877	-14.0%	30,265	25,098	-17.1%
Cultural Institutions	5.6%	115,874	102,165	-11.8%	361,346	310,626	-14.0%
Libraries	1.4%	27,758	25,123	-9.5%	89,425	80,018	-10.5%
Other	3.1%	51,769	46,090	-11.0%	162,966	150,771	-7.5%

Degree Days are a weather indicator. Heating and cooling degree days are the cumulative monthly difference in daily temperature from a reference temperature of 65 degrees (designated as the temperature at which neither heating nor cooling is needed). A dial value > 1 means greater energy needs as compared to the prior period. (In spring and fall, small year-to-year changes in degree days can appear large on the dial without having a major impact on energy use.) Even when weather causes increases in energy usage, agencies should still aim to drive down usage.

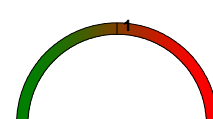
Degree Days	Heating	Cooling
YTD Current FY	32	1,091
YTD Prior FY	5	1,029
September FY21	32	175
September FY20	5	192



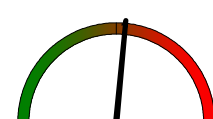
Monthly HDD Ratio:
Current Yr/Prior Yr



Monthly CDD Ratio:
Current Yr/Prior Yr



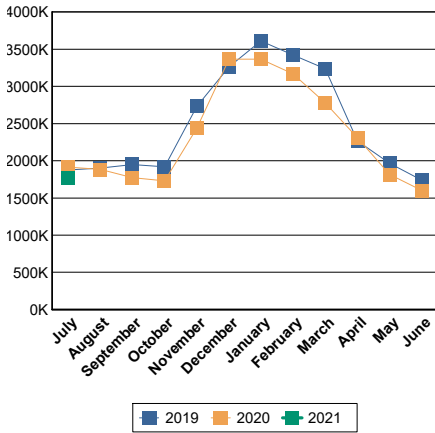
YTD HDD Ratio: Current
Yr/Prior Yr



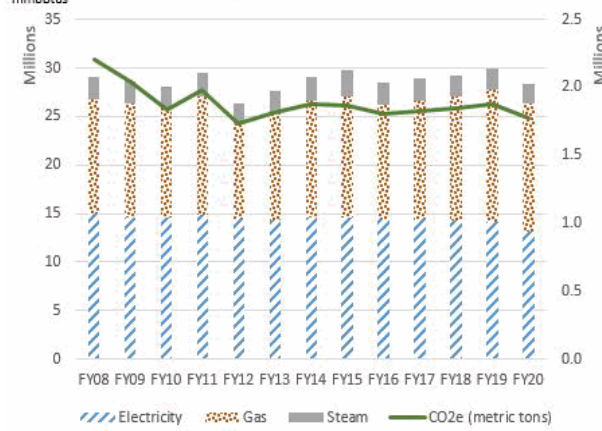
YTD CDD Ratio: Current
Yr/Prior Yr

Energy Dashboard Report - August 2020

Citywide Utility Energy Usage in BTU



Utility Energy and Carbon Emissions by FY



- Bar chart covers utility energy for City government buildings and operations (excluding transportation). Utility energy data are from citywide billings handled through DCAS.
- The FY20 utility energy total was 28.2 million mmBtus and 1.77 million metric tons of CO2e.

Energy Usage (From Utility Purchases): Data below are from monthly utility bills for electricity, natural gas, and steam. Usage is for the month and fiscal year-to-date indicated, expressed as mmBtus (millions of British thermal units). Late billings may impact totals for selected agencies.

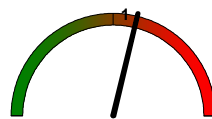
Usage is reported as a group for libraries, cultural institutions, and smaller City agencies (Other). Relative size is % of FY20 total. More detailed reports, including Citywide CORE and Agency CORE reports, are sent to agency energy liaison officers and are available through the DCAS EC3 energy reporting system.

* In millions of Btus (mmBtus) for electricity, natural gas, and steam

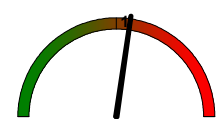
	Relative Size [% of Total]	August			Year To Date		
		FY 20	FY 21	-- % Change --	FY 20	FY 21	--% Change --
CITY GOVERNMENT TOTAL		1,885,584	1,636,452	-13.2%	3,800,780	3,422,143	-10.0%
Department of Education	24.3%	384,261	307,177	-20.1%	782,996	635,960	-18.8%
Health and Hospitals Corporation	13.7%	307,191	275,942	-10.2%	615,034	596,872	-3.0%
Department of Environmental Protection	12.8%	258,124	244,700	-5.2%	509,036	496,541	-2.5%
City University of New York - Senior Colleges	9.2%	207,849	170,121	-18.2%	407,796	341,781	-16.2%
Department of Correction	6.7%	107,032	97,699	-8.7%	241,413	233,011	-3.5%
Department of Sanitation	3.9%	34,451	31,872	-7.5%	69,478	68,064	-2.0%
Department of Citywide Administrative Services	3.7%	73,990	61,296	-17.2%	147,822	126,207	-14.6%
Department of Transportation	3.2%	75,693	70,233	-7.2%	146,558	149,506	2.0%
Police Department	2.9%	52,582	50,305	-4.3%	103,817	106,259	2.4%
City University of New York - Community Colleges	2.7%	50,158	36,938	-26.4%	100,674	69,606	-30.9%
Department of Social Services	2.0%	36,486	31,835	-12.7%	73,455	68,061	-7.3%
Department of Parks and Recreation	1.8%	26,885	22,132	-17.7%	53,195	46,467	-12.6%
Fire Department	1.5%	26,358	24,929	-5.4%	54,259	53,302	-1.8%
Department of Health and Mental Hygiene	1.0%	27,072	25,187	-7.0%	55,769	48,290	-13.4%
Administration for Children's Services	0.3%	10,519	8,467	-19.5%	21,103	17,121	-18.9%
Cultural Institutions	5.6%	120,073	101,154	-15.8%	245,472	206,592	-15.8%
Libraries	1.4%	31,174	26,869	-13.8%	61,667	55,249	-10.4%
Other	3.1%	55,686	49,594	-10.9%	111,236	103,254	-7.2%

Degree Days are a weather indicator. Heating and cooling degree days are the cumulative monthly difference in daily temperature from a reference temperature of 65 degrees (designated as the temperature at which neither heating nor cooling is needed). A dial value > 1 means greater energy needs as compared to the prior period. (In spring and fall, small year-to-year changes in degree days can appear large on the dial without having a major impact on energy use.) Even when weather causes increases in energy usage, agencies should still aim to drive down usage.

Degree Days	Heating	Cooling
YTD Current FY	0	914
YTD Prior FY	0	837
August FY21	0	410
August FY20	0	356



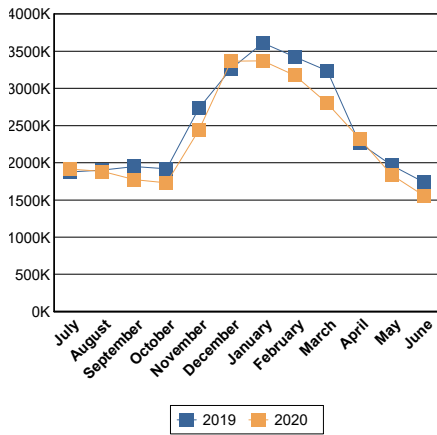
Monthly CDD Ratio:
Current Yr/Prior Yr



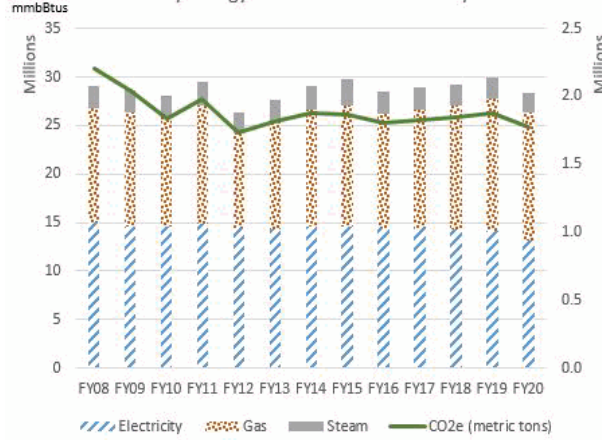
YTD CDD Ratio: Current
Yr/Prior Yr

Energy Dashboard Report - July 2020

Citywide Utility Energy Usage in BTU



Utility Energy and Carbon Emissions by FY



- Bar chart covers utility energy for City government buildings and operations (excluding transportation). Utility energy data are from citywide billings handled through DCAS.
- The FY20 utility energy total was 28.2 million mmBtus and 1.77 million metric tons of CO2e.

Energy Usage (From Utility Purchases): Data below are from monthly utility bills for electricity, natural gas, and steam. Usage is for the month and fiscal year-to-date indicated, expressed as mmBtus (millions of British thermal units). Late billings may impact totals for selected agencies.

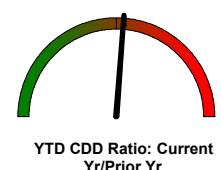
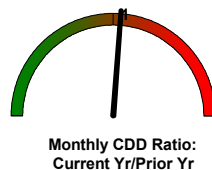
Usage is reported as a group for libraries, cultural institutions, and smaller City agencies (Other). Relative size is % of FY20 total. More detailed reports, including Citywide CORE and Agency CORE reports, are sent to agency energy liaison officers and are available through the DCAS EC3 energy reporting system.

* In millions of Btus (mmBtus) for electricity, natural gas, and steam

	Relative Size [% of Total]	July			Year To Date		
		FY 20	FY 21	-- % Change --	FY 20	FY 21	-- % Change --
CITY GOVERNMENT TOTAL		1,912,756	1,761,157	-7.9%	1,912,756	1,761,157	-7.9%
Department of Education	24.3%	398,519	330,097	-17.2%	398,519	330,097	-17.2%
Health and Hospitals Corporation	13.7%	305,355	305,219	0.0%	305,355	305,219	0.0%
Department of Environmental Protection	12.8%	250,914	248,489	-1.0%	250,914	248,489	-1.0%
City University of New York - Senior Colleges	9.2%	199,963	168,346	-15.8%	199,963	168,346	-15.8%
Department of Correction	6.7%	134,381	135,443	0.8%	134,381	135,443	0.8%
Department of Sanitation	3.9%	35,230	36,193	2.7%	35,230	36,193	2.7%
Department of Citywide Administrative Services	3.7%	73,833	62,480	-15.4%	73,833	62,480	-15.4%
Department of Transportation	3.2%	70,879	79,292	11.9%	70,879	79,292	11.9%
Police Department	2.9%	51,234	55,469	8.3%	51,234	55,469	8.3%
City University of New York - Community Colleges	2.7%	50,517	31,599	-37.4%	50,517	31,599	-37.4%
Department of Social Services	2.0%	36,969	36,497	-1.3%	36,969	36,497	-1.3%
Department of Parks and Recreation	1.8%	26,301	24,019	-8.7%	26,301	24,019	-8.7%
Fire Department	1.5%	27,941	28,159	0.8%	27,941	28,159	0.8%
Department of Health and Mental Hygiene	1.0%	28,696	22,608	-21.2%	28,696	22,608	-21.2%
Administration for Children's Services	0.3%	10,583	9,504	-10.2%	10,583	9,504	-10.2%
Cultural Institutions	5.6%	125,399	105,922	-15.5%	125,399	105,922	-15.5%
Libraries	1.4%	30,493	28,601	-6.2%	30,493	28,601	-6.2%
Other	3.1%	55,550	53,219	-4.2%	55,550	53,219	-4.2%

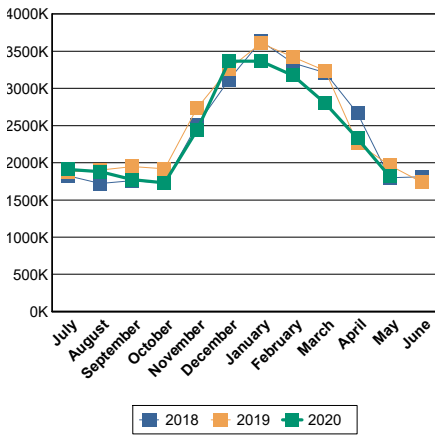
Degree Days are a weather indicator. Heating and cooling degree days are the cumulative monthly difference in daily temperature from a reference temperature of 65 degrees (designated as the temperature at which neither heating nor cooling is needed). A dial value > 1 means greater energy needs as compared to the prior period. (In spring and fall, small year-to-year changes in degree days can appear large on the dial without having a major impact on energy use.) Even when weather causes increases in energy usage, agencies should still aim to drive down usage.

Degree Days	Heating	Cooling
YTD Current FY	0	504
YTD Prior FY	0	481
July FY21	0	504
July FY20	0	481

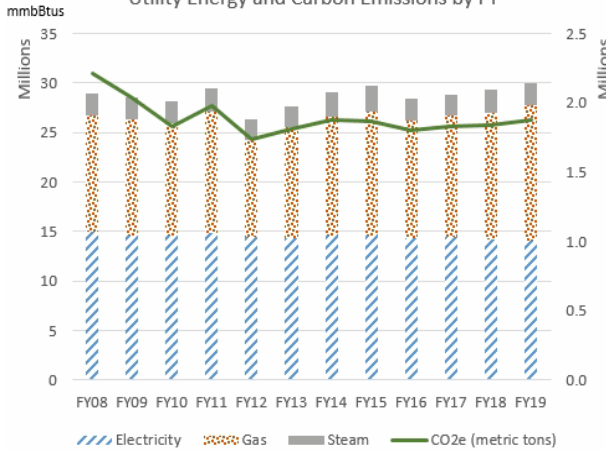


Energy Dashboard Report - June 2020

Citywide Utility Energy Usage in BTU



Utility Energy and Carbon Emissions by FY



- Bar chart covers utility energy for City government buildings and operations (excluding transportation). Utility energy data are from citywide billings handled through DCAS.
- The FY19 utility energy total was 29.9 million mmBtus and 1.88 million metric tons of CO2e.

Energy Usage (From Utility Purchases): Data below are from monthly utility bills for electricity, natural gas, and steam. Usage is for the month and fiscal year-to-date indicated, expressed as mmBtus (millions of British thermal units). Late billings may impact totals for selected agencies.

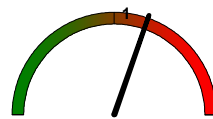
Usage is reported as a group for libraries, cultural institutions, and smaller City agencies (Other). Relative size is % of FY19 total. More detailed reports, including Citywide CORE and Agency CORE reports, are sent to agency energy liaison officers and are available through the DCAS EC3 energy reporting system.

* In millions of Btus (mmBtus) for electricity, natural gas, and steam

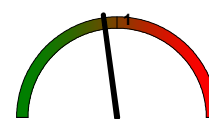
	Relative Size	June			Year To Date		
	[% of Total]	FY 19	FY 20	-- % Change --	FY 19	FY 20	--% Change --
CITY GOVERNMENT TOTAL		1,739,246	1,557,677	-10.4%	29,879,424	28,168,475	-5.7%
Department of Education	25.1%	385,707	299,887	-22.3%	7,714,585	7,016,080	-9.1%
Health and Hospitals Corporation	13.3%	288,218	287,151	-0.4%	3,977,195	3,846,845	-3.3%
Department of Environmental Protection	12.0%	245,970	247,424	0.6%	3,586,838	3,611,980	0.7%
City University of New York - Senior Colleges	9.0%	171,267	136,149	-20.5%	2,755,873	2,600,124	-5.7%
Department of Correction	6.8%	98,338	99,847	1.5%	2,008,048	1,873,879	-6.7%
Department of Citywide Administrative Services	3.8%	59,029	47,599	-19.4%	1,137,559	1,054,235	-7.3%
Department Of Transportation	3.6%	69,262	59,725	-13.8%	973,997	908,818	-6.7%
Department of Sanitation	3.7%	33,739	38,607	14.4%	1,101,864	1,105,277	0.3%
Police Department	2.9%	47,322	52,220	10.3%	858,152	821,069	-4.3%
City University of New York - Community Colleges	2.8%	42,008	24,592	-41.5%	846,872	764,054	-9.8%
Department of Social Services	2.0%	32,403	30,471	-6.0%	609,920	570,809	-6.4%
Department of Parks and Recreation	1.8%	23,208	22,576	-2.7%	540,994	511,845	-5.4%
Fire Department	1.5%	23,069	23,730	2.9%	448,808	422,601	-5.8%
Department Of Health and Mental Hygiene	0.9%	19,727	22,652	14.8%	278,037	275,462	-0.9%
Administration for Children's Services	0.3%	9,228	7,787	-15.6%	127,147	114,110	-10.3%
Cultural Institutions	5.9%	113,477	88,605	-21.9%	1,742,814	1,572,240	-9.8%
Libraries	1.5%	26,322	21,795	-17.2%	443,763	408,077	-8.0%
Other	3.1%	50,952	46,858	-8.0%	726,960	690,970	-5.0%

Degree Days are a weather indicator. Heating and cooling degree days are the cumulative monthly difference in daily temperature from a reference temperature of 65 degrees (designated as the temperature at which neither heating nor cooling is needed). A dial value > 1 means greater energy needs as compared to the prior period. (In spring and fall, small year-to-year changes in degree days can appear large on the dial without having a major impact on energy use.) Even when weather causes increases in energy usage, agencies should still aim to drive down usage.

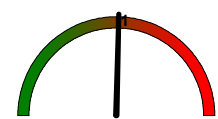
Degree Days	Heating	Cooling
YTD Current FY	4,199	1,416
YTD Prior FY	4,593	1,394
June FY20	4	300
June FY19	4	247



Monthly CDD Ratio: Current Yr/Prior Yr



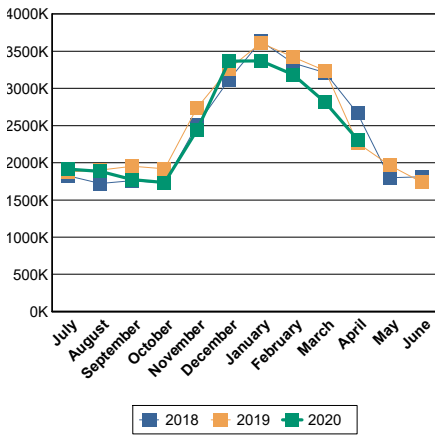
YTD HDD Ratio: Current Yr/Prior Yr



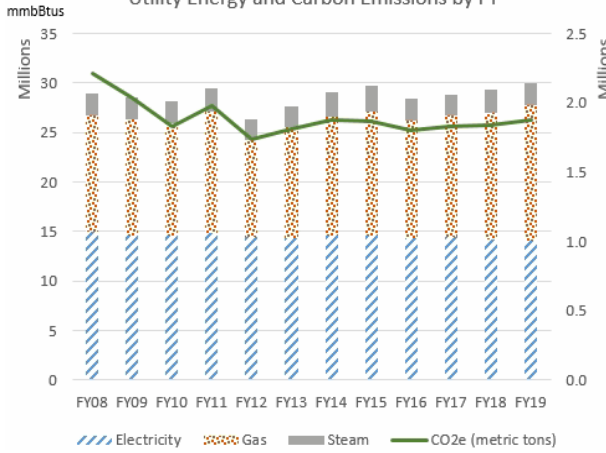
YTD CDD Ratio: Current Yr/Prior Yr

Energy Dashboard Report - May 2020

Citywide Utility Energy Usage in BTU



Utility Energy and Carbon Emissions by FY



- Bar chart covers utility energy for City government buildings and operations (excluding transportation). Utility energy data are from citywide billings handled through DCAS.
- The FY19 utility energy total was 29.9 million mmBtus and 1.88 million metric tons of CO2e.

Energy Usage (From Utility Purchases): Data below are from monthly utility bills for electricity, natural gas, and steam. Usage is for the month and fiscal year-to-date indicated, expressed as mmBtus (millions of British thermal units). Late billings may impact totals for selected agencies.

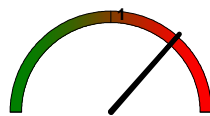
Usage is reported as a group for libraries, cultural institutions, and smaller City agencies (Other). Relative size is % of FY19 total. More detailed reports, including Citywide CORE and Agency CORE reports, are sent to agency energy liaison officers and are available through the DCAS EC3 energy reporting system.

* In millions of Btus (mmBtus) for electricity, natural gas, and steam

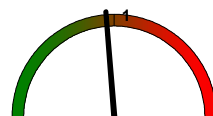
	Relative Size	May			Year To Date		
	[% of Total]	FY 19	FY 20	-- % Change --	FY 19	FY 20	--% Change --
CITY GOVERNMENT TOTAL		1,964,303	1,815,980	-7.6%	28,132,882	26,581,795	-5.5%
Department of Education	25.1%	439,219	395,027	-10.1%	7,327,013	6,719,180	-8.3%
Health and Hospitals Corporation	13.3%	289,835	283,320	-2.2%	3,688,949	3,549,440	-3.8%
Department of Environmental Protection	12.0%	284,049	280,391	-1.3%	3,340,430	3,364,128	0.7%
City University of New York - Senior Colleges	9.0%	165,391	140,564	-15.0%	2,584,606	2,464,797	-4.6%
Department of Correction	6.8%	153,092	144,619	-5.5%	1,909,710	1,770,674	-7.3%
Department of Citywide Administrative Services	3.8%	62,282	49,720	-20.2%	1,078,531	1,001,067	-7.2%
Department Of Transportation	3.6%	72,460	53,506	-26.2%	904,382	847,671	-6.3%
Department of Sanitation	3.7%	66,147	82,147	24.2%	1,069,325	1,070,069	0.1%
Police Department	2.9%	56,648	59,114	4.4%	810,813	769,015	-5.2%
City University of New York - Community Colleges	2.8%	40,812	36,992	-9.4%	804,864	740,517	-8.0%
Department of Social Services	2.0%	39,631	35,522	-10.4%	577,517	536,801	-7.1%
Department of Parks and Recreation	1.8%	32,144	31,282	-2.7%	518,139	490,015	-5.4%
Fire Department	1.5%	25,934	28,320	9.2%	425,739	398,586	-6.4%
Department Of Health and Mental Hygiene	0.9%	16,449	16,456	0.0%	258,310	251,528	-2.6%
Administration for Children's Services	0.3%	8,685	8,179	-5.8%	117,919	106,446	-9.7%
Cultural Institutions	5.9%	129,751	98,550	-24.0%	1,629,337	1,482,364	-9.0%
Libraries	1.5%	28,627	23,866	-16.6%	411,382	380,149	-7.6%
Other	3.1%	53,147	48,404	-8.9%	675,917	639,347	-5.4%

Degree Days are a weather indicator. Heating and cooling degree days are the cumulative monthly difference in daily temperature from a reference temperature of 65 degrees (designated as the temperature at which neither heating nor cooling is needed). A dial value > 1 means greater energy needs as compared to the prior period. (In spring and fall, small year-to-year changes in degree days can appear large on the dial without having a major impact on energy use.) Even when weather causes increases in energy usage, agencies should still aim to drive down usage.

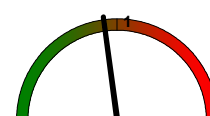
Degree Days	Heating	Cooling
YTD Current FY	4,195	1,116
YTD Prior FY	4,589	1,147
May FY20	165	56
May FY19	113	59



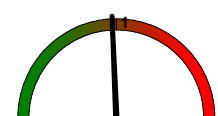
Monthly HDD Ratio: Current Yr/Prior Yr



Monthly CDD Ratio: Current Yr/Prior Yr



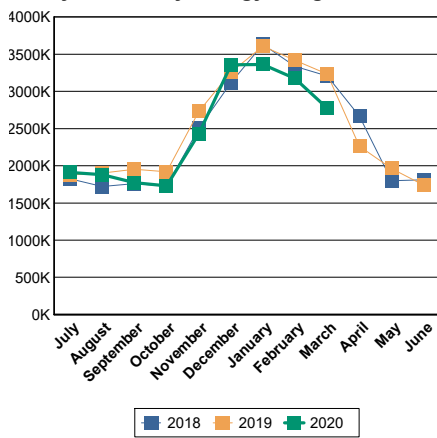
YTD HDD Ratio: Current Yr/Prior Yr



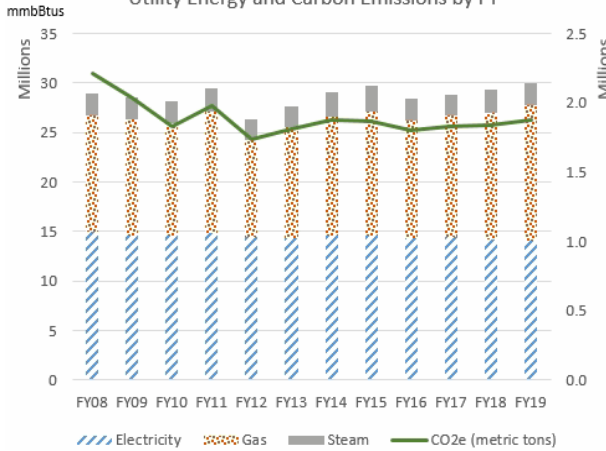
YTD CDD Ratio: Current Yr/Prior Yr

Energy Dashboard Report - April 2020

Citywide Utility Energy Usage in BTU



Utility Energy and Carbon Emissions by FY



- Bar chart covers utility energy for City government buildings and operations (excluding transportation). Utility energy data are from citywide billings handled through DCAS.
- The FY19 utility energy total was 29.9 million mmBtus and 1.88 million metric tons of CO2e.

Energy Usage (From Utility Purchases): Data below are from monthly utility bills for electricity, natural gas, and steam. Usage is for the month and fiscal year-to-date indicated, expressed as mmBtus (millions of British thermal units). Late billings may impact totals for selected agencies.

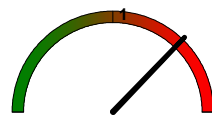
Usage is reported as a group for libraries, cultural institutions, and smaller City agencies (Other). Relative size is % of FY19 total. More detailed reports, including Citywide CORE and Agency CORE reports, are sent to agency energy liaison officers and are available through the DCAS EC3 energy reporting system.

* In millions of Btus (mmBtus) for electricity, natural gas, and steam

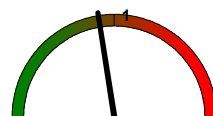
	Relative Size	April			Year To Date		
	[% of Total]	FY 19	FY 20	-- % Change --	FY 19	FY 20	--% Change --
CITY GOVERNMENT TOTAL		2,266,423	2,312,751	2.0%	26,180,394	24,783,689	-5.3%
Department of Education	25.1%	585,921	588,025	0.4%	6,884,405	6,321,190	-8.2%
Health and Hospitals Corporation	13.3%	332,025	291,071	-12.3%	3,399,113	3,245,000	-4.5%
Department of Environmental Protection	12.0%	275,241	318,485	15.7%	3,056,482	3,088,329	1.0%
City University of New York - Senior Colleges	9.0%	181,045	186,051	2.8%	2,419,215	2,335,229	-3.5%
Department of Correction	6.8%	115,796	166,606	43.9%	1,756,617	1,647,065	-6.2%
Department of Citywide Administrative Services	3.8%	78,394	75,914	-3.2%	1,016,248	946,114	-6.9%
Department Of Transportation	3.6%	67,216	63,255	-5.9%	847,158	809,038	-4.5%
Department of Sanitation	3.7%	121,507	122,711	1.0%	1,003,179	987,435	-1.6%
Police Department	2.9%	70,303	76,567	8.9%	753,909	709,265	-5.9%
City University of New York - Community Colleges	2.8%	58,380	58,815	0.7%	764,052	704,509	-7.8%
Department of Social Services	2.0%	47,838	48,925	2.3%	537,886	501,029	-6.9%
Department of Parks and Recreation	1.8%	44,978	46,527	3.4%	486,055	458,987	-5.6%
Fire Department	1.5%	35,153	36,053	2.6%	399,804	369,748	-7.5%
Department Of Health and Mental Hygiene	0.9%	18,162	18,312	0.8%	241,861	235,267	-2.7%
Administration for Children's Services	0.3%	9,518	10,263	7.8%	109,235	99,544	-8.9%
Cultural Institutions	5.9%	134,039	115,677	-13.7%	1,499,650	1,378,248	-8.1%
Libraries	1.5%	32,685	33,976	4.0%	382,755	357,956	-6.5%
Other	3.1%	58,222	55,519	-4.6%	622,770	589,736	-5.3%

Degree Days are a weather indicator. Heating and cooling degree days are the cumulative monthly difference in daily temperature from a reference temperature of 65 degrees (designated as the temperature at which neither heating nor cooling is needed). A dial value > 1 means greater energy needs as compared to the prior period. (In spring and fall, small year-to-year changes in degree days can appear large on the dial without having a major impact on energy use.) Even when weather causes increases in energy usage, agencies should still aim to drive down usage.

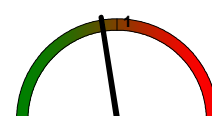
Degree Days	Heating	Cooling
YTD Current FY	4,030	1,060
YTD Prior FY	4,476	1,088
April FY20	430	0
April FY19	289	11



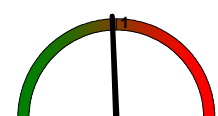
Monthly HDD Ratio: Current Yr/Prior Yr



Monthly CDD Ratio: Current Yr/Prior Yr



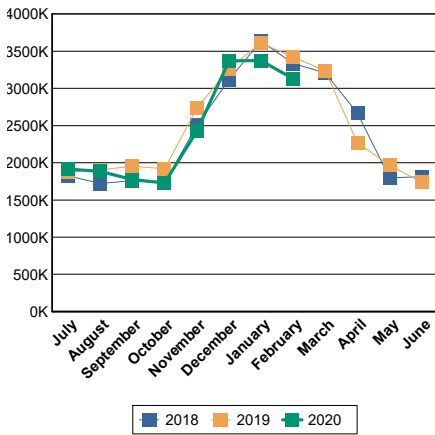
YTD HDD Ratio: Current Yr/Prior Yr



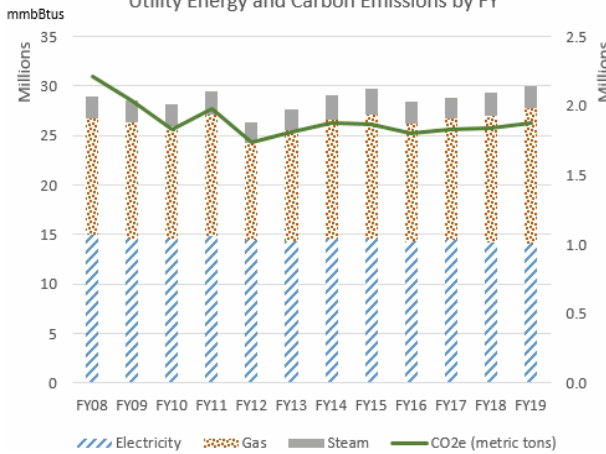
YTD CDD Ratio: Current Yr/Prior Yr

Energy Dashboard Report - March 2020

Citywide Utility Energy Usage in BTU



Utility Energy and Carbon Emissions by FY



- Bar chart covers utility energy for City government buildings and operations (excluding transportation). Utility energy data are from citywide billings handled through DCAS.
- The FY19 utility energy total was 29.9 million mmBtus and 1.88 million metric tons of CO2e.

Energy Usage (From Utility Purchases): Data below are from monthly utility bills for electricity, natural gas, and steam. Usage is for the month and fiscal year-to-date indicated, expressed as mmBtus (millions of British thermal units). Late billings may impact totals for selected agencies.

Usage is reported as a group for libraries, cultural institutions, and smaller City agencies (Other). Relative size is % of FY19 total. More detailed reports, including Citywide CORE and Agency CORE reports, are sent to agency energy liaison officers and are available through the DCAS EC3 energy reporting system.

* In millions of Btus (mmBtus) for electricity, natural gas, and steam

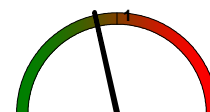
	Relative Size	March			Year To Date		
	[% of Total]	FY 19	FY 20	-- % Change --	FY 19	FY 20	--% Change --
CITY GOVERNMENT TOTAL		3,233,851	2,773,248	-14.2%	23,890,616	22,393,968	-6.3%
Department of Education	25.1%	938,616	761,536	-18.9%	6,286,455	5,716,961	-9.1%
Health and Hospitals Corporation	13.3%	394,583	323,755	-18.0%	3,067,088	2,929,390	-4.5%
Department of Environmental Protection	12.0%	340,812	333,601	-2.1%	2,781,253	2,772,234	-0.3%
City University of New York - Senior Colleges	9.0%	285,214	248,456	-12.9%	2,238,170	2,139,917	-4.4%
Department of Correction	6.8%	209,969	214,424	2.1%	1,640,821	1,480,459	-9.8%
Department of Citywide Administrative Services	3.8%	122,840	98,137	-20.1%	937,855	865,110	-7.8%
Department Of Transportation	3.6%	77,438	70,778	-8.6%	770,150	732,938	-4.8%
Department of Sanitation	3.7%	173,029	135,304	-21.8%	881,769	864,347	-2.0%
Police Department	2.9%	95,277	81,632	-14.3%	683,606	632,718	-7.4%
City University of New York - Community Colleges	2.8%	95,135	80,181	-15.7%	705,671	646,636	-8.4%
Department of Social Services	2.0%	64,977	56,792	-12.6%	490,048	452,717	-7.6%
Department of Parks and Recreation	1.8%	68,466	56,821	-17.0%	441,150	410,377	-7.0%
Fire Department	1.5%	53,487	43,548	-18.6%	364,651	332,804	-8.7%
Department Of Health and Mental Hygiene	0.9%	25,046	20,816	-16.9%	223,603	216,569	-3.1%
Administration for Children's Services	0.3%	13,115	10,091	-23.1%	99,717	89,341	-10.4%
Cultural Institutions	5.9%	160,677	140,263	-12.7%	1,363,984	1,255,607	-7.9%
Libraries	1.5%	45,820	38,051	-17.0%	350,071	322,666	-7.8%
Other	3.1%	69,350	59,062	-14.8%	564,553	533,179	-5.6%

Degree Days are a weather indicator. Heating and cooling degree days are the cumulative monthly difference in daily temperature from a reference temperature of 65 degrees (designated as the temperature at which neither heating nor cooling is needed). A dial value > 1 means greater energy needs as compared to the prior period. (In spring and fall, small year-to-year changes in degree days can appear large on the dial without having a major impact on energy use.) Even when weather causes increases in energy usage, agencies should still aim to drive down usage.

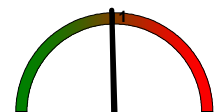
Degree Days	Heating	Cooling
YTD Current FY	3,600	1,060
YTD Prior FY	4,187	1,077
March FY20	515	0
March FY19	714	0



Monthly HDD Ratio: Current Yr/Prior Yr



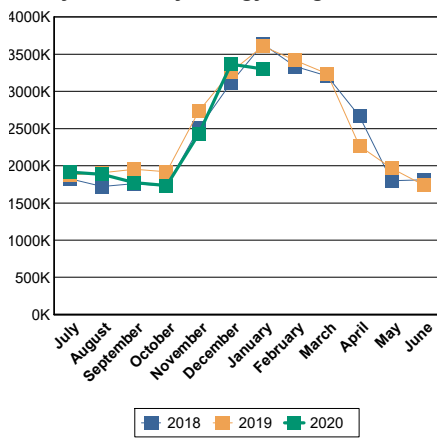
YTD HDD Ratio: Current Yr/Prior Yr



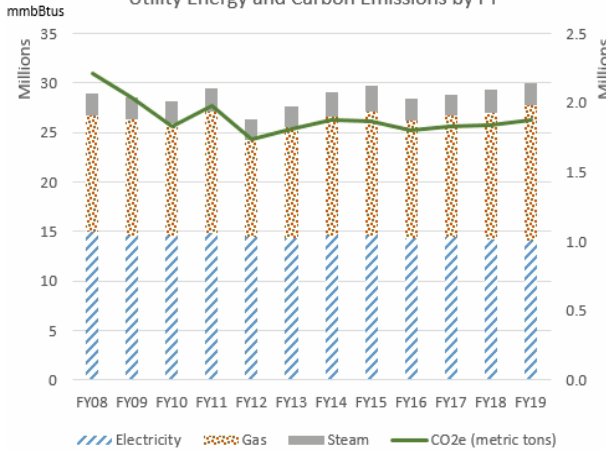
YTD CDD Ratio: Current Yr/Prior Yr

Energy Dashboard Report - February 2020

Citywide Utility Energy Usage in BTU



Utility Energy and Carbon Emissions by FY



- Bar chart covers utility energy for City government buildings and operations (excluding transportation). Utility energy data are from citywide billings handled through DCAS.
- The FY19 utility energy total was 29.9 million mmBtus and 1.88 million metric tons of CO2e.

Energy Usage (From Utility Purchases): Data below are from monthly utility bills for electricity, natural gas, and steam. Usage is for the month and fiscal year-to-date indicated, expressed as mmBtus (millions of British thermal units). Late billings may impact totals for selected agencies.

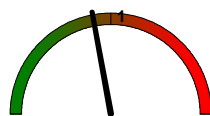
Usage is reported as a group for libraries, cultural institutions, and smaller City agencies (Other). Relative size is % of FY19 total. More detailed reports, including Citywide CORE and Agency CORE reports, are sent to agency energy liaison officers and are available through the DCAS EC3 energy reporting system.

* In millions of Btus (mmBtus) for electricity, natural gas, and steam

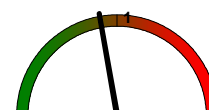
	Relative Size	February			Year To Date		
	[% of Total]	FY 19	FY 20	-- % Change --	FY 19	FY 20	--% Change --
CITY GOVERNMENT TOTAL		3,420,451	3,127,858	-8.6%	20,682,330	19,600,874	-5.2%
Department of Education	25.1%	1,012,455	892,851	-11.8%	5,347,142	4,920,270	-8.0%
Health and Hospitals Corporation	13.3%	398,635	330,586	-17.1%	2,672,505	2,579,497	-3.5%
Department of Environmental Protection	12.0%	348,561	379,461	8.9%	2,440,115	2,482,226	1.7%
City University of New York - Senior Colleges	9.0%	299,706	298,069	-0.5%	1,952,989	1,892,494	-3.1%
Department of Correction	6.8%	217,033	211,532	-2.5%	1,430,852	1,266,035	-11.5%
Department of Citywide Administrative Services	3.8%	133,946	115,189	-14.0%	815,014	755,431	-7.3%
Department Of Transportation	3.6%	82,505	79,965	-3.1%	719,819	687,903	-4.4%
Department of Sanitation	3.7%	173,855	155,515	-10.5%	708,740	722,589	2.0%
Police Department	2.9%	104,091	92,760	-10.9%	588,221	552,205	-6.1%
City University of New York - Community Colleges	2.8%	102,524	93,502	-8.8%	610,536	558,576	-8.5%
Department of Social Services	2.0%	70,220	66,511	-5.3%	422,817	393,311	-7.0%
Department of Parks and Recreation	1.8%	76,137	65,744	-13.7%	372,912	353,033	-5.3%
Fire Department	1.5%	59,117	50,293	-14.9%	311,168	288,234	-7.4%
Department Of Health and Mental Hygiene	0.9%	27,125	22,838	-15.8%	198,556	195,451	-1.6%
Administration for Children's Services	0.3%	13,513	10,954	-18.9%	86,601	82,072	-5.2%
Cultural Institutions	5.9%	173,737	151,956	-12.5%	1,204,866	1,114,308	-7.5%
Libraries	1.5%	51,466	43,808	-14.9%	304,274	283,479	-6.8%
Other	3.1%	75,822	66,324	-12.5%	495,203	473,761	-4.3%

Degree Days are a weather indicator. Heating and cooling degree days are the cumulative monthly difference in daily temperature from a reference temperature of 65 degrees (designated as the temperature at which neither heating nor cooling is needed). A dial value > 1 means greater energy needs as compared to the prior period. (In spring and fall, small year-to-year changes in degree days can appear large on the dial without having a major impact on energy use.) Even when weather causes increases in energy usage, agencies should still aim to drive down usage.

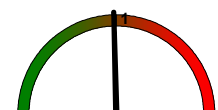
Degree Days	Heating	Cooling
YTD Current FY	3,085	1,060
YTD Prior FY	3,473	1,077
February FY20	706	0
February FY19	799	0



Monthly HDD Ratio: Current Yr/Prior Yr



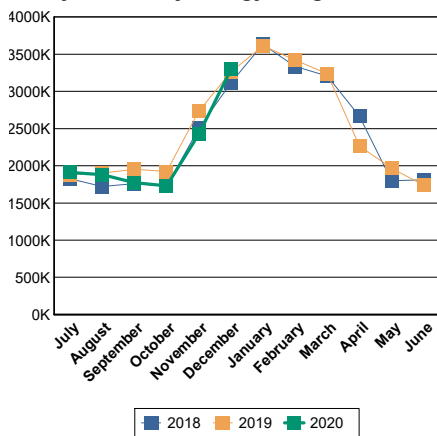
YTD HDD Ratio: Current Yr/Prior Yr



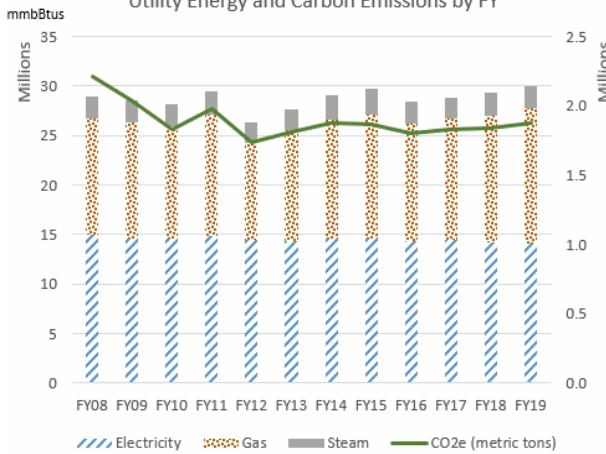
YTD CDD Ratio: Current Yr/Prior Yr

Energy Dashboard Report - January 2020

Citywide Utility Energy Usage in BTU



Utility Energy and Carbon Emissions by FY



- Bar chart covers utility energy for City government buildings and operations (excluding transportation). Utility energy data are from citywide billings handled through DCAS.
- The FY19 utility energy total was 29.9 million mmBtus and 1.88 million metric tons of CO2e.

Energy Usage (From Utility Purchases): Data below are from monthly utility bills for electricity, natural gas, and steam. Usage is for the month and fiscal year-to-date indicated, expressed as mmBtus (millions of British thermal units). Late billings may impact totals for selected agencies.

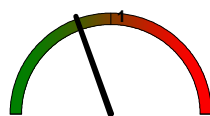
Usage is reported as a group for libraries, cultural institutions, and smaller City agencies (Other). Relative size is % of FY19 total. More detailed reports, including Citywide CORE and Agency CORE reports, are sent to agency energy liaison officers and are available through the DCAS EC3 energy reporting system.

* In millions of Btus (mmBtus) for electricity, natural gas, and steam

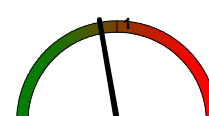
	Relative Size	January			Year To Date		
	[% of Total]	FY 19	FY 20	-- % Change --	FY 19	FY 20	--% Change --
CITY GOVERNMENT TOTAL		3,607,461	3,301,935	-8.5%	17,258,904	16,402,249	-5.0%
Department of Education	25.1%	1,051,737	942,024	-10.4%	4,331,922	4,012,268	-7.4%
Health and Hospitals Corporation	13.3%	421,470	365,625	-13.3%	2,273,869	2,222,052	-2.3%
Department of Environmental Protection	12.0%	386,012	386,052	0.0%	2,091,477	2,098,265	0.3%
City University of New York - Senior Colleges	9.0%	324,512	305,382	-5.9%	1,653,283	1,604,812	-2.9%
Department of Correction	6.8%	228,449	204,550	-10.5%	1,213,819	1,049,542	-13.5%
Department of Citywide Administrative Services	3.8%	159,690	128,834	-19.3%	681,068	633,731	-7.0%
Department Of Transportation	3.6%	98,923	94,353	-4.6%	637,254	607,487	-4.7%
Department of Sanitation	3.7%	153,638	158,491	3.2%	534,885	557,501	4.2%
Police Department	2.9%	109,415	98,064	-10.4%	484,130	459,699	-5.0%
City University of New York - Community Colleges	2.8%	104,758	98,201	-6.3%	508,012	465,085	-8.4%
Department of Social Services	2.0%	74,828	70,322	-6.0%	352,597	325,604	-7.7%
Department of Parks and Recreation	1.8%	76,202	73,932	-3.0%	296,775	287,068	-3.3%
Fire Department	1.5%	60,748	54,270	-10.7%	252,031	236,734	-6.1%
Department Of Health and Mental Hygiene	0.9%	29,018	26,463	-8.8%	171,431	172,394	0.6%
Administration for Children's Services	0.3%	13,702	11,477	-16.2%	73,088	71,122	-2.7%
Cultural Institutions	5.9%	185,450	169,681	-8.5%	1,031,128	952,100	-7.7%
Libraries	1.5%	52,706	47,582	-9.7%	252,808	239,211	-5.4%
Other	3.1%	76,205	66,632	-12.6%	419,328	407,573	-2.8%

Degree Days are a weather indicator. Heating and cooling degree days are the cumulative monthly difference in daily temperature from a reference temperature of 65 degrees (designated as the temperature at which neither heating nor cooling is needed). A dial value > 1 means greater energy needs as compared to the prior period. (In spring and fall, small year-to-year changes in degree days can appear large on the dial without having a major impact on energy use.) Even when weather causes increases in energy usage, agencies should still aim to drive down usage.

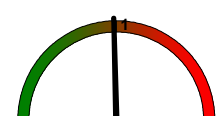
Degree Days	Heating	Cooling
YTD Current FY	2,379	1,060
YTD Prior FY	2,674	1,077
January FY20	780	0
January FY19	999	0



Monthly HDD Ratio: Current Yr/Prior Yr



YTD HDD Ratio: Current Yr/Prior Yr



YTD CDD Ratio: Current Yr/Prior Yr