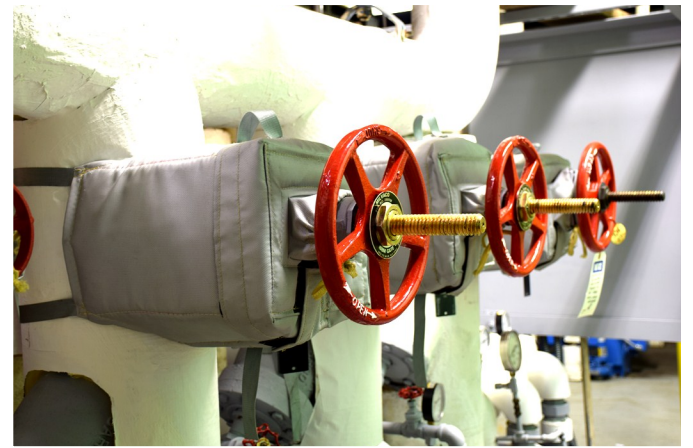
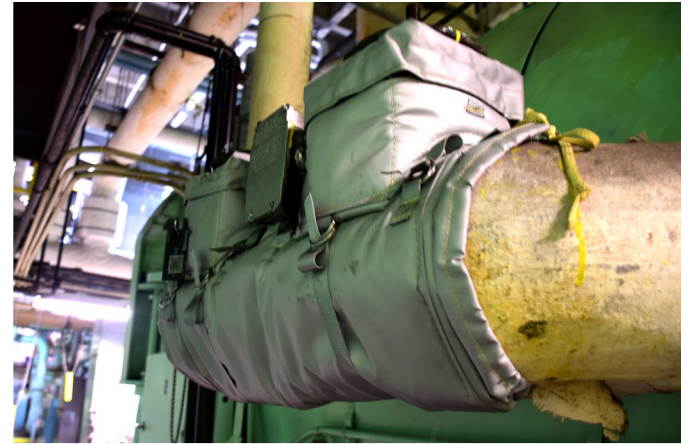


# Project Highlight

Expenses for Conservation and Efficiency Leadership (ExCEL) Program



## BROOKLYN MUSEUM: PIPING INSULATION

For this 2016 ExCEL project, the Brooklyn Museum installed several different types of insulation in the Brooklyn Museum's HVAC room to prevent energy transmission loss through the heating systems' piping. Of note, specialized jackets for valves were implemented where previously no insulation solution was possible to capture additional loss savings.



**200 metric tons/year**  
Projected GHG Reduction



**\$36,305/year**  
Projected Energy  
Cost Savings