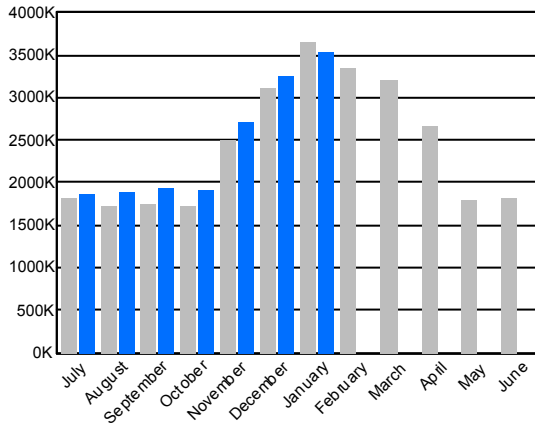




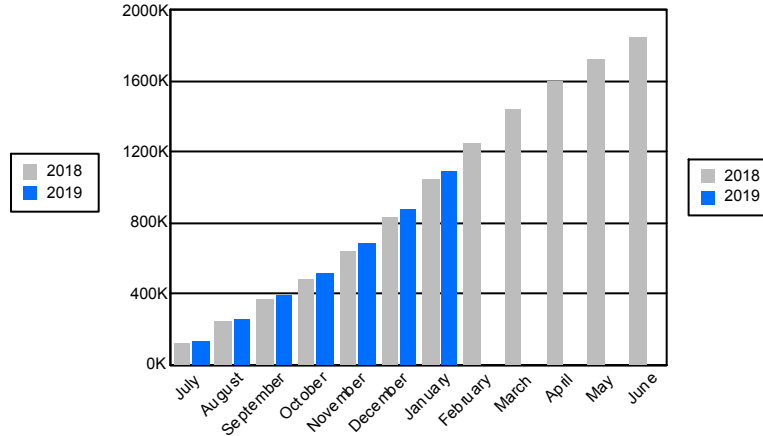
Core Report Citywide Total from Heat/Light/Power Expenditures: Energy Cost, Usage, and CO2e Emissions

January 2019

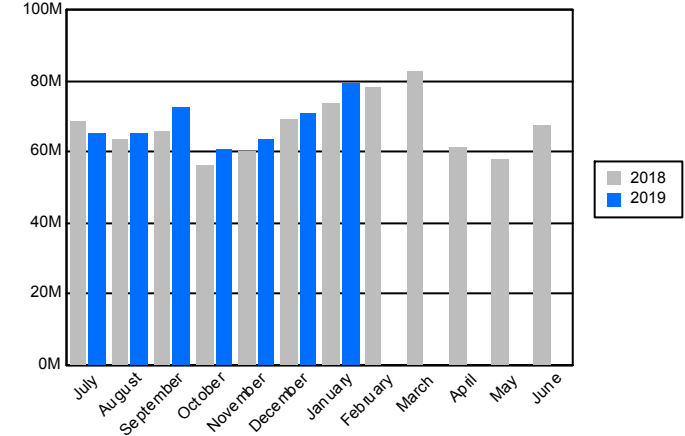
Citywide Energy Usage in Millions of BTUs



Citywide CO2e Emissions (FY Cumulative)

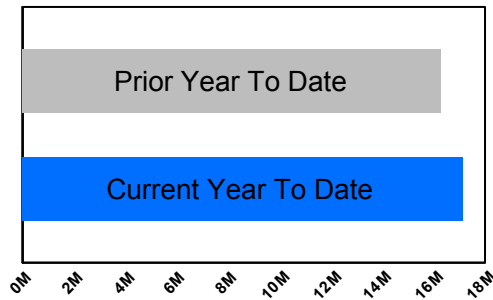


Citywide Cost

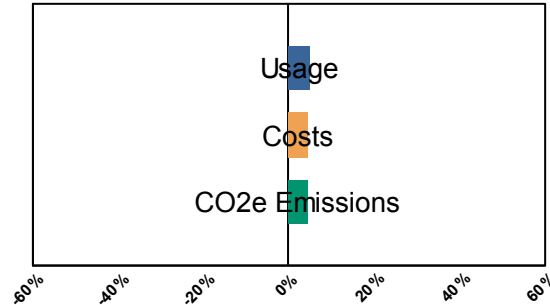


Current Year to Date compared to Prior Year to Date

Millions of BTUs



% Change



	Degree Days	
	Heating	Cooling
YTD Current FY	2,674	1,077
YTD Prior FY	2,608	933
January, 2019	999	0
January, 2018	1,026	0



Core Report Citywide Total from Heat/Light/Power Expenditures: Energy Cost, Usage, and CO2e Emissions

January 2019

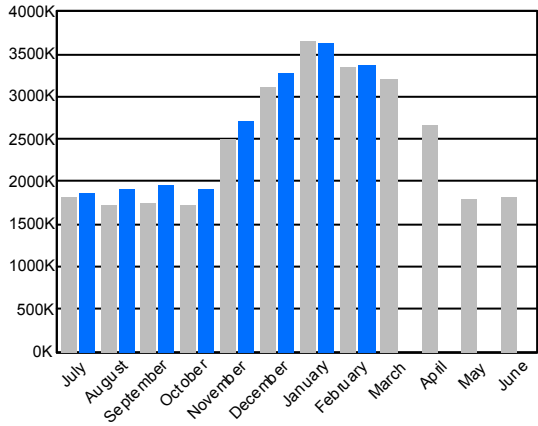
Year To Date	July	August	September	October	November	December	January	February	March	April	May	June	
Energy Usage													
Total Energy in Millions of BTUs													
FY 2019	17,120,220	1,873,620	1,898,515	1,947,340	1,906,249	2,708,993	3,247,953	3,537,549					
FY 2018	16,307,699	1,823,919	1,718,219	1,760,406	1,725,616	2,509,512	3,124,205	3,645,824	3,342,219	3,219,026	2,669,875	1,806,255	1,813,191
% Change	5.0%	2.7%	10.5%	10.6%	10.5%	7.9%	4.0%	-3.0%					
Energy Usage By Energy Type													
Electric Demand (kw)													
FY 2019	6,045,423	938,892	906,402	1,006,339	928,368	780,995	747,895	736,532					
FY 2018	6,012,574	951,472	892,349	926,355	948,071	793,096	750,077	751,154	745,532	730,863	746,563	886,452	945,730
% Change	0.5%	-1.3%	1.6%	8.6%	-2.1%	-1.5%	-0.3%	-1.9%					
Electric consumption (kwh)													
FY 2019	2,511,555,343	375,985,971	376,442,664	394,866,548	341,839,723	347,236,200	327,714,160	347,470,077					
FY 2018	2,504,128,919	380,516,716	367,719,970	370,212,499	354,293,564	349,360,553	336,028,065	345,997,552	350,983,547	320,659,705	303,553,017	320,238,820	372,483,029
% Change	0.3%	-1.2%	2.4%	6.7%	-3.5%	-0.6%	-2.5%	0.4%					
Natural gas (Therms)													
FY 2019	73,137,885	4,747,576	5,023,893	4,903,501	6,102,854	13,093,290	18,715,383	20,551,388					
FY 2018	65,060,883	4,044,654	3,578,605	3,934,228	4,269,110	11,141,715	17,183,718	20,908,853	19,041,144	18,660,655	14,500,593	6,194,562	4,505,461
% Change	12.4%	17.4%	40.4%	24.6%	43.0%	17.5%	8.9%	-1.7%					
Steam (mlbs)													
FY 2019	1,105,008	103,495	99,650	97,845	115,706	192,043	230,873	265,396					
FY 2018	1,123,381	108,085	94,282	92,597	80,113	181,683	231,806	334,815	215,004	231,430	164,512	83,983	81,778
% Change	-1.6%	-4.2%	5.7%	5.7%	44.4%	5.7%	-0.4%	-20.7%					
Energy Cost													
Total Cost													
FY 2019	\$477,496,538	\$65,380,141	\$65,395,910	\$72,253,579	\$60,562,482	\$63,662,483	\$70,840,693	\$79,401,249					
FY 2018	\$456,711,447	\$68,699,661	\$63,560,271	\$65,512,600	\$56,309,049	\$60,298,454	\$68,855,260	\$73,476,152	\$78,314,754	\$82,497,444	\$61,059,689	\$57,950,248	\$67,462,723
% Change	4.6%	-4.8%	2.9%	10.3%	7.6%	5.6%	2.9%	8.1%					
Energy Cost By Energy Type													
Electricity													
FY 2019	\$381,754,618	\$59,539,302	\$59,474,553	\$66,840,456	\$53,846,016	\$46,663,303	\$46,165,228	\$49,225,760					
FY 2018	\$375,212,871	\$63,567,452	\$59,162,567	\$60,943,645	\$51,434,200	\$46,388,691	\$48,449,192	\$45,267,124	\$51,823,014	\$58,646,814	\$42,228,500	\$49,909,062	\$61,562,541
% Change	1.7%	-6.3%	0.5%	9.7%	4.7%	0.6%	-4.7%	8.7%					
Natural Gas													
FY 2019	\$66,962,958	\$4,209,463	\$4,317,003	\$3,776,378	\$4,798,577	\$10,817,003	\$17,530,387	\$21,514,147					
FY 2018	\$51,478,740	\$3,357,465	\$2,878,881	\$3,120,778	\$3,580,495	\$8,108,579	\$13,530,132	\$16,902,411	\$18,489,978	\$16,161,017	\$13,212,254	\$6,369,108	\$4,558,782
% Change	30.1%	25.4%	50.0%	21.0%	34.0%	33.4%	29.6%	27.3%					
Steam													
FY 2019	\$28,778,962	\$1,631,376	\$1,604,354	\$1,636,744	\$1,917,889	\$6,182,177	\$7,145,079	\$8,661,342					
FY 2018	\$30,019,835	\$1,774,744	\$1,518,824	\$1,448,177	\$1,294,354	\$5,801,184	\$6,875,936	\$11,306,617	\$8,001,763	\$7,689,613	\$5,618,934	\$1,672,078	\$1,341,400
% Change	-4.1%	-8.1%	5.6%	13.0%	48.2%	6.6%	3.9%	-23.4%					



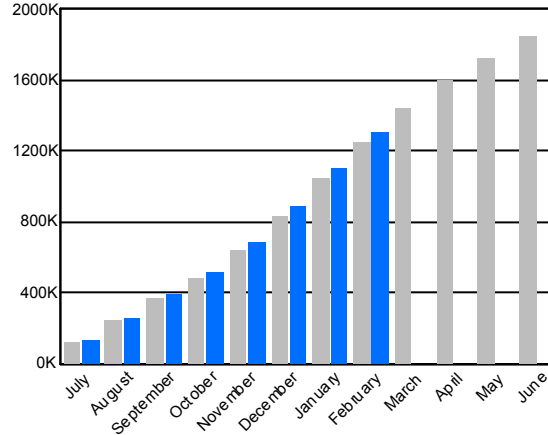
Core Report Citywide Total from Heat/Light/Power Expenditures: Energy Cost, Usage, and CO2e Emissions

February 2019

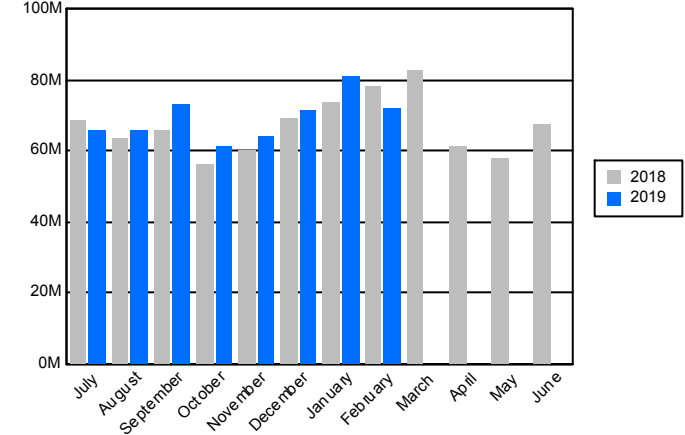
Citywide Energy Usage in Millions of BTUs



Citywide CO2e Emissions (FY Cumulative)

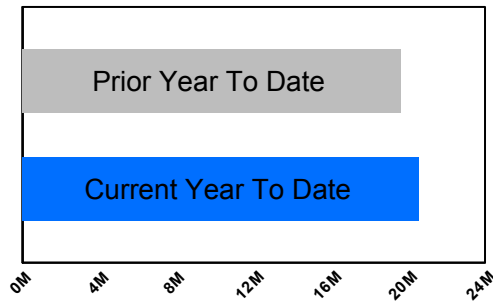


Citywide Cost

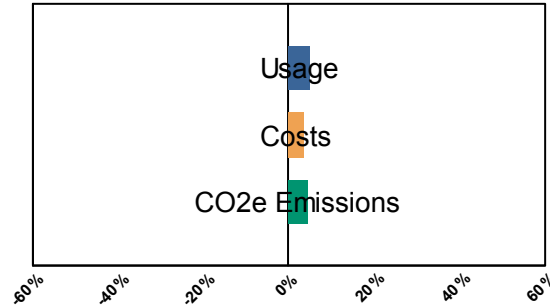


Current Year to Date compared to Prior Year to Date

Millions of BTUs



% Change



	Degree Days	
	Heating	Cooling
YTD Current FY	3,473	1,077
YTD Prior FY	3,246	935
February, 2019	799	0
February, 2018	638	2



Core Report Citywide Total from Heat/Light/Power Expenditures: Energy Cost, Usage, and CO2e Emissions

February 2019

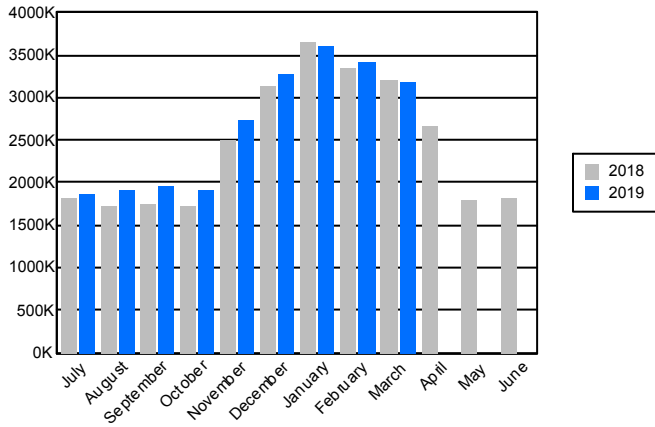
Year To Date	July	August	September	October	November	December	January	February	March	April	May	June
Energy Usage												
Total Energy in Millions of BTUs												
FY 2019	20,632,899	1,880,561	1,906,093	1,954,032	1,914,263	2,724,878	3,266,982	3,622,213	3,363,877			
FY 2018	19,649,444	1,824,096	1,718,437	1,760,917	1,726,170	2,509,504	3,124,319	3,644,466	3,341,535	3,215,302	2,670,507	1,798,715
% Change	5.0%	3.1%	10.9%	11.0%	10.9%	8.6%	4.6%	-0.6%	0.7%			
Energy Usage By Energy Type												
Electric Demand (kw)												
FY 2019	6,788,693	939,861	909,559	1,007,394	929,018	781,808	742,406	739,407	739,240			
FY 2018	6,764,238	951,485	894,850	926,777	948,723	793,642	750,721	751,758	746,282	731,621	747,361	886,886
% Change	0.4%	-1.2%	1.6%	8.7%	-2.1%	-1.5%	-1.1%	-1.6%	-0.9%			
Electric consumption (kwh)												
FY 2019	2,864,427,356	378,936,111	379,536,982	397,887,989	344,945,279	350,665,670	330,956,551	350,541,956	330,956,818			
FY 2018	2,855,851,834	380,523,551	367,740,159	370,314,115	354,413,361	349,476,548	336,141,952	346,121,921	351,120,227	320,791,241	304,696,122	319,008,899
% Change	0.3%	-0.4%	3.2%	7.4%	-2.7%	0.3%	-1.5%	1.3%	-5.7%			
Natural gas (Therms)												
FY 2019	93,717,989	4,716,295	4,994,063	4,867,295	6,077,007	13,135,092	18,784,385	21,273,794	19,870,058			
FY 2018	84,072,050	4,046,187	3,580,097	3,935,875	4,270,562	11,137,684	17,180,979	20,891,031	19,029,635	18,618,923	14,467,894	6,161,134
% Change	11.5%	16.6%	39.5%	23.7%	42.3%	17.9%	9.3%	1.8%	4.4%			
Steam (mlbs)												
FY 2019	1,329,069	103,495	99,650	97,845	115,706	192,043	231,824	267,131	221,375			
FY 2018	1,338,385	108,085	94,282	92,597	80,113	181,683	231,806	334,815	215,004	231,430	164,512	83,983
% Change	-0.7%	-4.2%	5.7%	5.7%	44.4%	5.7%	0.0%	-20.2%	3.0%			
Energy Cost												
Total Cost												
FY 2019	\$553,738,232	\$65,485,033	\$65,895,843	\$72,855,289	\$61,040,787	\$64,107,750	\$71,200,810	\$80,984,409	\$72,168,311			
FY 2018	\$535,337,105	\$68,701,937	\$63,655,987	\$65,559,019	\$56,364,191	\$60,343,798	\$68,896,085	\$73,484,108	\$78,331,979	\$82,491,621	\$61,092,660	\$57,856,537
% Change	3.4%	-4.7%	3.5%	11.1%	8.3%	6.2%	3.3%	10.2%	-7.9%			
Energy Cost By Energy Type												
Electricity												
FY 2019	\$429,290,438	\$59,679,366	\$60,008,313	\$67,355,083	\$54,346,668	\$47,075,963	\$46,312,395	\$49,989,534	\$44,523,116			
FY 2018	\$427,370,895	\$63,568,095	\$59,256,709	\$60,988,434	\$51,487,549	\$46,437,219	\$48,492,261	\$45,287,961	\$51,852,668	\$58,679,794	\$42,295,658	\$49,859,338
% Change	0.4%	-6.1%	1.3%	10.4%	5.6%	1.4%	-4.5%	10.4%	-14.1%			
Natural Gas												
FY 2019	\$87,146,304	\$4,174,291	\$4,283,176	\$3,863,461	\$4,776,230	\$10,849,610	\$17,728,019	\$22,291,596	\$19,179,921			
FY 2018	\$69,944,612	\$3,359,099	\$2,880,455	\$3,122,408	\$3,582,288	\$8,105,395	\$13,527,888	\$16,889,530	\$18,477,548	\$16,122,215	\$13,178,068	\$6,325,121
% Change	24.6%	24.3%	48.7%	23.7%	33.3%	33.9%	31.0%	32.0%	3.8%			
Steam												
FY 2019	\$37,301,490	\$1,631,376	\$1,604,354	\$1,636,744	\$1,917,889	\$6,182,177	\$7,160,396	\$8,703,279	\$8,465,274			
FY 2018	\$38,021,598	\$1,774,744	\$1,518,824	\$1,448,177	\$1,294,354	\$5,801,184	\$6,875,936	\$11,306,617	\$8,001,763	\$7,689,613	\$5,618,934	\$1,672,078
% Change	-1.9%	-8.1%	5.6%	13.0%	48.2%	6.6%	4.1%	-23.0%	5.8%			



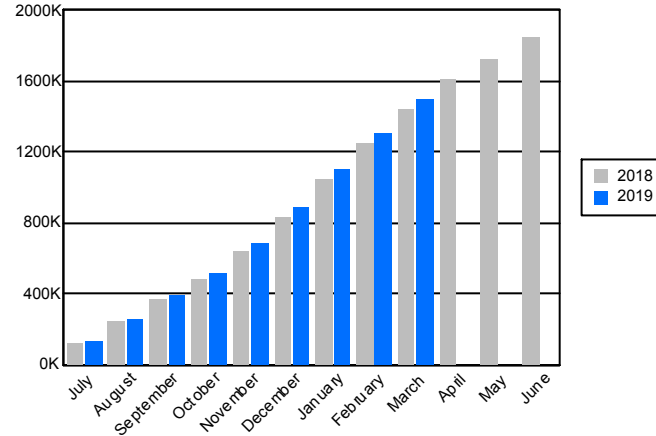
Core Report Citywide Total from Heat/Light/Power Expenditures: Energy Cost, Usage, and CO2e Emissions

March 2019

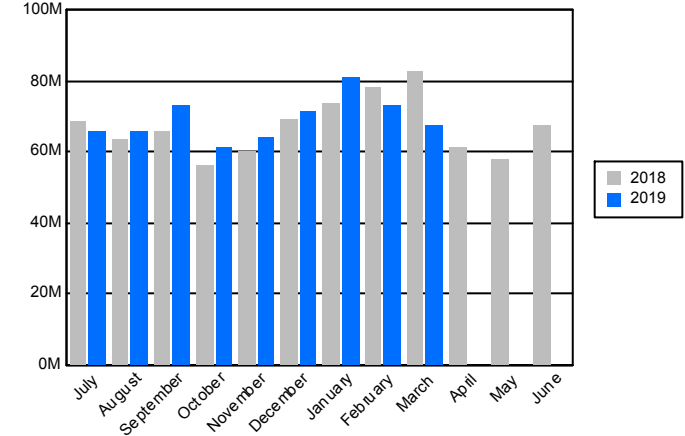
Citywide Energy Usage in Millions of BTUs



Citywide CO2e Emissions (FY Cumulative)

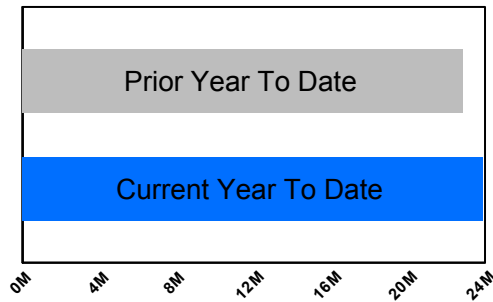


Citywide Cost

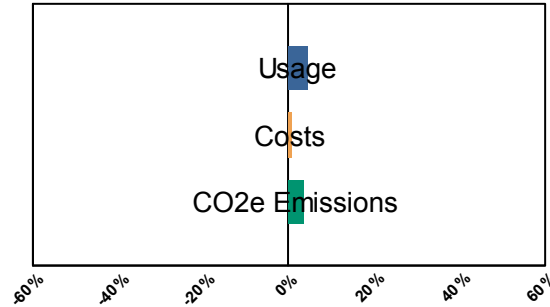


Current Year to Date compared to Prior Year to Date

Millions of BTUs



% Change



	Degree Days	
	Heating	Cooling
YTD Current FY	4,187	1,077
YTD Prior FY	4,011	935
March, 2019	714	0
March, 2018	765	0



Core Report Citywide Total from Heat/Light/Power Expenditures: Energy Cost, Usage, and CO2e Emissions

March 2019

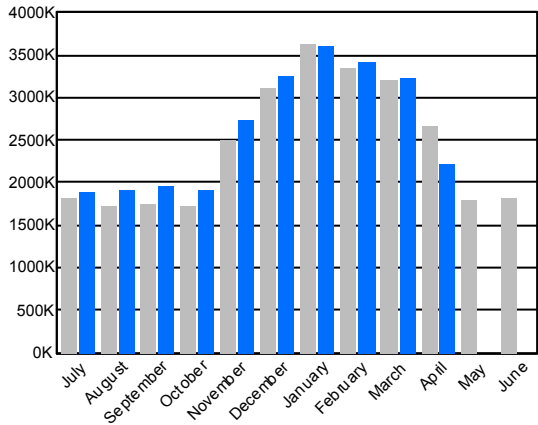
Year To Date	July	August	September	October	November	December	January	February	March	April	May	June	
Energy Usage													
Total Energy in Millions of BTUs													
FY 2019	23,872,829	1,880,601	1,906,799	1,955,238	1,917,817	2,730,019	3,268,345	3,614,376	3,422,010	3,177,624			
FY 2018	22,873,306	1,824,182	1,718,463	1,760,898	1,726,325	2,510,282	3,126,031	3,646,341	3,343,617	3,217,168	2,671,927	1,799,888	1,813,674
% Change	4.4%	3.1%	11.0%	11.0%	11.1%	8.8%	4.6%	-0.9%	2.3%	-1.2%			
Energy Usage By Energy Type													
Electric Demand (kw)													
FY 2019	7,526,761	939,899	909,972	1,007,912	929,448	781,917	742,369	738,008	741,386	735,850			
FY 2018	7,496,816	951,610	895,048	926,892	948,588	793,733	750,895	751,911	746,411	731,728	747,441	886,905	946,423
% Change	0.4%	-1.2%	1.7%	8.7%	-2.0%	-1.5%	-1.1%	-1.8%	-0.7%	0.6%			
Electric consumption (kwh)													
FY 2019	3,172,110,319	378,712,653	379,461,147	397,863,281	344,942,870	350,810,875	329,329,875	345,483,829	327,671,807	317,833,982			
FY 2018	3,176,877,079	380,542,005	367,740,972	370,303,653	354,445,669	349,526,225	336,176,276	346,160,046	351,156,744	320,825,489	304,743,773	319,084,183	373,321,326
% Change	-0.2%	-0.5%	3.2%	7.4%	-2.7%	0.4%	-2.0%	-0.2%	-6.7%	-0.9%			
Natural gas (Therms)													
FY 2019	113,133,772	4,724,322	5,003,711	4,880,197	6,112,622	13,181,549	18,853,535	21,362,241	20,558,141	18,457,454			
FY 2018	102,768,588	4,046,419	3,580,335	3,936,038	4,271,011	11,143,761	17,196,921	20,908,482	19,049,207	18,636,414	14,480,469	6,170,298	4,481,675
% Change	10.1%	16.8%	39.8%	24.0%	43.1%	18.3%	9.6%	2.2%	7.9%	-1.0%			
Steam (mlbs)													
FY 2019	1,551,262	103,495	99,650	97,845	115,706	192,043	231,824	267,652	221,855	221,192			
FY 2018	1,569,815	108,085	94,282	92,597	80,113	181,683	231,806	334,815	215,004	231,430	164,512	83,983	81,778
% Change	-1.2%	-4.2%	5.7%	5.7%	44.4%	5.7%	0.0%	-20.1%	3.2%	-4.4%			
Energy Cost													
Total Cost													
FY 2019	\$622,515,064	\$65,490,182	\$65,918,629	\$72,894,090	\$61,096,983	\$64,276,649	\$71,371,926	\$81,148,650	\$73,030,707	\$67,287,247			
FY 2018	\$617,974,421	\$68,709,373	\$63,664,234	\$65,565,032	\$56,368,270	\$60,358,670	\$68,919,777	\$73,507,138	\$78,363,117	\$82,518,809	\$61,116,076	\$57,874,887	\$67,473,180
% Change	0.7%	-4.7%	3.5%	11.2%	8.4%	6.5%	3.6%	10.4%	-6.8%	-18.5%			
Energy Cost By Energy Type													
Electricity													
FY 2019	\$473,945,536	\$59,675,327	\$60,020,058	\$67,380,722	\$54,369,613	\$47,202,454	\$46,408,170	\$50,033,648	\$44,699,959	\$44,155,586			
FY 2018	\$486,125,659	\$63,575,296	\$59,264,690	\$60,994,273	\$51,491,137	\$46,446,846	\$48,502,867	\$45,297,967	\$51,862,166	\$58,690,418	\$42,305,917	\$49,866,487	\$61,599,543
% Change	-2.5%	-6.1%	1.3%	10.5%	5.6%	1.6%	-4.3%	10.5%	-13.8%	-24.8%			
Natural Gas													
FY 2019	\$103,593,460	\$4,183,479	\$4,294,218	\$3,876,624	\$4,809,481	\$10,892,018	\$17,803,361	\$22,389,342	\$19,842,199	\$15,502,739			
FY 2018	\$86,137,551	\$3,359,333	\$2,880,720	\$3,122,583	\$3,582,780	\$8,110,640	\$13,540,974	\$16,902,554	\$18,499,188	\$16,138,778	\$13,191,224	\$6,336,322	\$4,532,238
% Change	20.3%	24.5%	49.1%	24.1%	34.2%	34.3%	31.5%	32.5%	7.3%	-3.9%			
Steam													
FY 2019	\$44,976,068	\$1,631,376	\$1,604,354	\$1,636,744	\$1,917,889	\$6,182,177	\$7,160,396	\$8,725,659	\$8,488,550	\$7,628,922			
FY 2018	\$45,711,211	\$1,774,744	\$1,518,824	\$1,448,177	\$1,294,354	\$5,801,184	\$6,875,936	\$11,306,617	\$8,001,763	\$7,689,613	\$5,618,934	\$1,672,078	\$1,341,400
% Change	-1.6%	-8.1%	5.6%	13.0%	48.2%	6.6%	4.1%	-22.8%	6.1%	-0.8%			



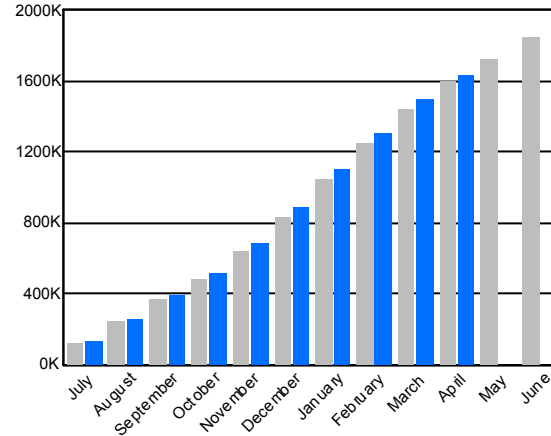
Core Report Citywide Total from Heat/Light/Power Expenditures: Energy Cost, Usage, and CO2e Emissions

April 2019

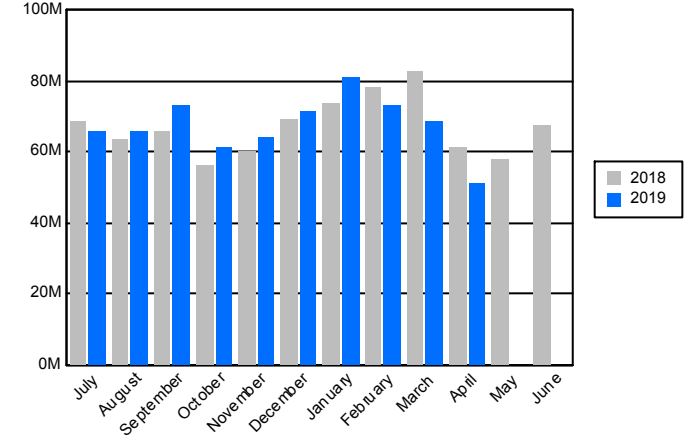
Citywide Energy Usage in Millions of BTUs



Citywide CO2e Emissions (FY Cumulative)

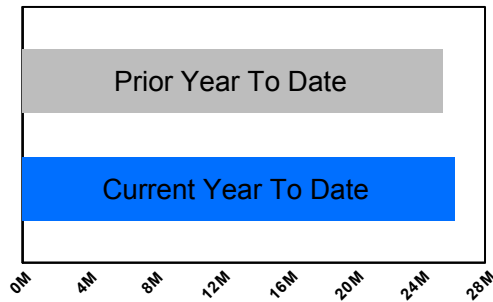


Citywide Cost

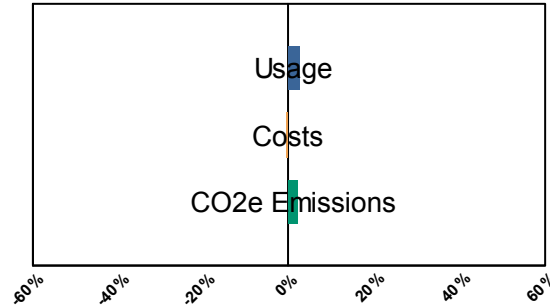


Current Year to Date compared to Prior Year to Date

Millions of BTUs



% Change



	Degree Days	
	Heating	Cooling
YTD Current FY	4,476	1,088
YTD Prior FY	4,477	941
April, 2019	289	11
April, 2018	466	6



Core Report Citywide Total from Heat/Light/Power Expenditures: Energy Cost, Usage, and CO2e Emissions

April 2019

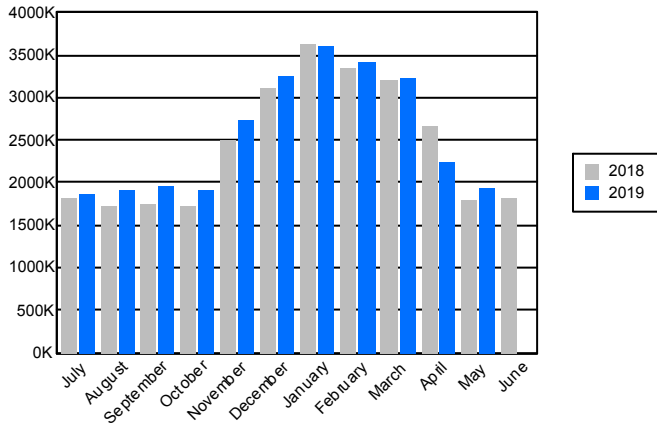
Year To Date	July	August	September	October	November	December	January	February	March	April	May	June
Energy Usage												
Total Energy in Millions of BTUs												
FY 2019	26,145,650	1,881,457	1,907,529	1,955,279	1,917,859	2,727,629	3,265,237	3,610,802	3,422,012	3,240,603	2,217,245	
FY 2018	25,519,152	1,824,634	1,718,818	1,760,961	1,726,419	2,507,293	3,120,908	3,639,236	3,339,340	3,211,933	2,669,609	1,815,043
% Change	2.5%	3.1%	11.0%	11.0%	11.1%	8.8%	4.6%	-0.8%	2.5%	0.9%	-16.9%	
Energy Usage By Energy Type												
Electric Demand (kw)												
FY 2019	8,254,253	940,334	908,374	1,009,606	930,117	782,749	744,080	738,903	730,142	734,971	734,977	
FY 2018	8,246,138	951,785	892,799	926,995	949,030	794,307	751,635	752,488	746,978	732,124	747,997	946,725
% Change	0.1%	-1.2%	1.7%	8.9%	-2.0%	-1.5%	-1.0%	-1.8%	-2.3%	0.4%	-1.7%	
Electric consumption (kwh)												
FY 2019	3,461,885,675	379,010,690	379,708,558	397,970,584	344,888,938	350,797,593	329,479,003	345,462,829	325,982,023	315,284,799	293,300,658	
FY 2018	3,482,991,175	380,667,255	367,879,994	370,353,037	354,606,645	349,754,504	336,346,801	346,290,272	351,267,651	320,927,820	304,897,196	373,632,365
% Change	-0.6%	-0.4%	3.2%	7.5%	-2.7%	0.3%	-2.0%	-0.2%	-7.2%	-1.8%	-3.8%	
Natural gas (Therms)												
FY 2019	124,606,931	4,722,705	5,002,565	4,876,953	6,114,882	13,158,099	18,817,356	21,324,757	20,613,421	19,172,051	10,804,142	
FY 2018	116,941,478	4,046,664	3,579,135	3,934,987	4,266,462	11,106,083	17,139,870	20,832,991	19,002,655	18,580,577	14,452,054	4,484,752
% Change	6.6%	16.7%	39.8%	23.9%	43.3%	18.5%	9.8%	2.4%	8.5%	3.2%	-25.2%	
Steam (mlbs)												
FY 2019	1,673,447	103,495	99,650	97,845	115,706	192,043	231,824	267,872	222,071	221,389	121,552	
FY 2018	1,734,327	108,085	94,282	92,597	80,113	181,683	231,806	334,815	215,004	231,430	164,512	81,778
% Change	-3.5%	-4.2%	5.7%	5.7%	44.4%	5.7%	0.0%	-20.0%	3.3%	-4.3%	-26.1%	
Energy Cost												
Total Cost												
FY 2019	\$675,298,709	\$65,510,356	\$65,871,887	\$72,949,742	\$61,116,548	\$64,274,905	\$71,407,314	\$81,161,921	\$73,317,312	\$68,655,742	\$51,032,983	
FY 2018	\$678,759,250	\$68,717,475	\$63,580,837	\$65,540,637	\$56,356,129	\$60,329,482	\$68,879,929	\$73,467,943	\$78,341,797	\$82,438,707	\$61,106,314	\$67,497,342
% Change	-0.5%	-4.7%	3.6%	11.3%	8.4%	6.5%	3.7%	10.5%	-6.4%	-16.7%	-16.5%	
Energy Cost By Energy Type												
Electricity												
FY 2019	\$512,343,121	\$59,697,369	\$59,974,596	\$67,439,595	\$54,386,796	\$47,221,833	\$46,470,873	\$50,082,707	\$44,944,312	\$44,955,931	\$37,169,108	
FY 2018	\$528,361,984	\$63,583,117	\$59,182,244	\$60,970,710	\$51,482,173	\$46,444,260	\$48,506,091	\$45,318,062	\$51,885,449	\$58,663,865	\$42,326,014	\$61,619,983
% Change	-3.0%	-6.1%	1.3%	10.6%	5.6%	1.7%	-4.2%	10.5%	-13.4%	-23.4%	-12.2%	
Natural Gas												
FY 2019	\$113,757,926	\$4,181,611	\$4,292,936	\$3,873,403	\$4,811,862	\$10,870,895	\$17,776,045	\$22,344,519	\$19,874,380	\$16,062,341	\$9,669,935	
FY 2018	\$99,067,120	\$3,359,614	\$2,879,769	\$3,121,750	\$3,579,602	\$8,084,037	\$13,497,902	\$16,843,265	\$18,454,586	\$16,085,230	\$13,161,366	\$4,535,958
% Change	14.8%	24.5%	49.1%	24.1%	34.4%	34.5%	31.7%	32.7%	7.7%	-0.1%	-26.5%	
Steam												
FY 2019	\$49,197,661	\$1,631,376	\$1,604,354	\$1,636,744	\$1,917,889	\$6,182,177	\$7,160,396	\$8,734,695	\$8,498,619	\$7,637,470	\$4,193,939	
FY 2018	\$51,330,146	\$1,774,744	\$1,518,824	\$1,448,177	\$1,294,354	\$5,801,184	\$6,875,936	\$11,306,617	\$8,001,763	\$7,689,613	\$5,618,934	\$1,341,400
% Change	-4.2%	-8.1%	5.6%	13.0%	48.2%	6.6%	4.1%	-22.7%	6.2%	-0.7%	-25.4%	



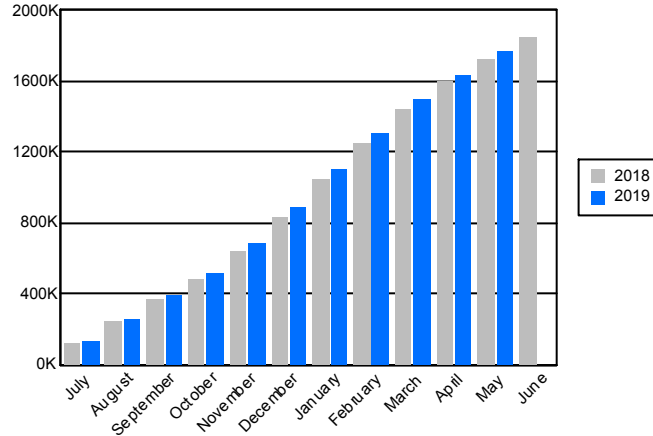
Core Report Citywide Total from Heat/Light/Power Expenditures: Energy Cost, Usage, and CO2e Emissions

May 2019

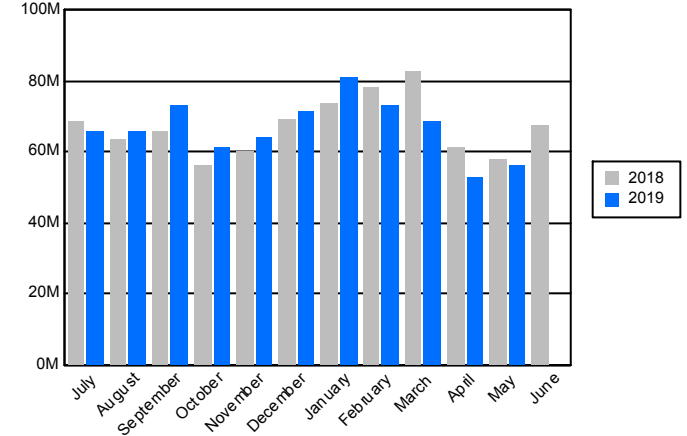
Citywide Energy Usage in Millions of BTUs



Citywide CO2e Emissions (FY Cumulative)

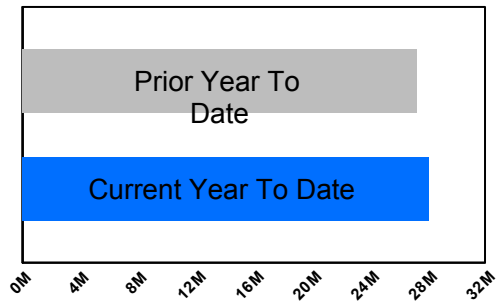


Citywide Cost

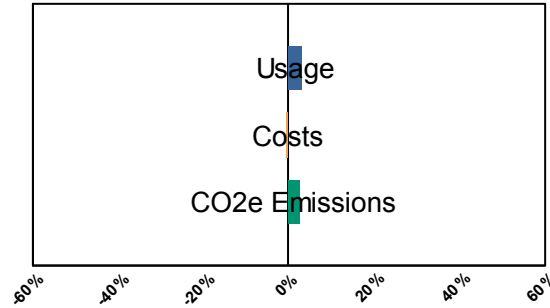


Current Year to Date compared to Prior Year to Date

Millions of BTUs



% Change



	Degree Days	
	Heating	Cooling
YTD Current FY	4,589	1,147
YTD Prior FY	4,537	1,069
May, 2019	113	59
May, 2018	60	128



Core Report Citywide Total from Heat/Light/Power Expenditures: Energy Cost, Usage, and CO2e Emissions

May 2019

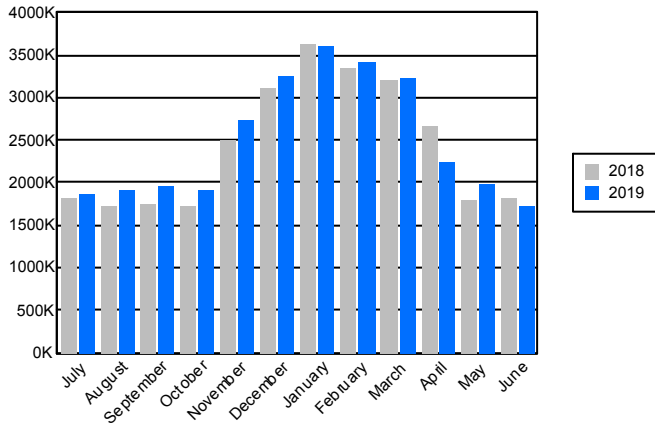
Year To Date	July	August	September	October	November	December	January	February	March	April	May	June	
Energy Usage													
Total Energy in Millions of BTUs													
FY 2019	28,115,600	1,880,602	1,907,097	1,955,023	1,917,693	2,727,772	3,264,517	3,611,930	3,420,498	3,238,417	2,251,536	1,940,515	
FY 2018	27,313,707	1,824,253	1,718,434	1,760,581	1,725,974	2,506,913	3,120,263	3,638,481	3,338,563	3,211,180	2,668,831	1,800,234	1,813,855
% Change	2.9%	3.1%	11.0%	11.0%	11.1%	8.8%	4.6%	-0.7%	2.5%	0.8%	-15.6%	7.8%	
Energy Usage By Energy Type													
Electric Demand (kw)													
FY 2019	9,122,202	940,109	908,060	1,009,687	930,416	783,009	744,243	740,584	730,182	734,429	743,843	857,640	
FY 2018	9,131,582	951,663	892,676	926,873	948,908	794,160	751,510	752,354	746,827	731,878	747,709	887,024	946,445
% Change	-0.1%	-1.2%	1.7%	8.9%	-1.9%	-1.4%	-1.0%	-1.6%	-2.2%	0.3%	-0.5%	-3.3%	
Electric consumption (kwh)													
FY 2019	3,778,590,193	378,868,140	379,550,951	397,867,250	344,742,891	350,594,189	329,480,896	345,442,197	325,625,673	314,300,814	292,235,667	319,881,525	
FY 2018	3,800,866,340	380,555,542	367,767,561	370,242,284	354,476,132	349,644,235	336,227,852	346,169,283	351,108,329	320,774,622	304,701,857	319,198,643	373,411,525
% Change	-0.6%	-0.4%	3.2%	7.5%	-2.7%	0.3%	-2.0%	-0.2%	-7.3%	-2.0%	-4.1%	0.2%	
Natural gas (Therms)													
FY 2019	132,512,051	4,719,023	5,003,624	4,877,913	6,118,970	13,166,496	18,823,679	21,337,418	20,611,386	19,169,624	11,174,804	7,509,114	
FY 2018	123,099,703	4,046,664	3,579,135	3,934,961	4,266,462	11,106,051	17,137,479	20,829,569	19,000,320	18,578,271	14,450,938	6,169,853	4,480,408
% Change	7.6%	16.6%	39.8%	24.0%	43.4%	18.6%	9.8%	2.4%	8.5%	3.2%	-22.7%	21.7%	
Steam (mlbs)													
FY 2019	1,761,638	103,495	99,650	97,845	115,638	192,041	230,608	267,812	221,987	222,655	122,322	87,585	
FY 2018	1,818,310	108,085	94,282	92,597	80,113	181,683	231,806	334,815	215,004	231,430	164,512	83,983	81,778
% Change	-3.1%	-4.2%	5.7%	5.7%	44.3%	5.7%	-0.5%	-20.0%	3.2%	-3.8%	-25.6%	4.3%	
Energy Cost													
Total Cost													
FY 2019	\$733,012,304	\$65,497,143	\$65,858,516	\$72,951,513	\$61,123,731	\$64,286,168	\$71,376,957	\$81,056,604	\$73,180,849	\$68,706,477	\$52,668,864	\$56,305,483	
FY 2018	\$736,534,880	\$68,710,551	\$63,574,591	\$65,534,252	\$56,353,527	\$60,322,654	\$68,869,964	\$73,456,530	\$78,325,803	\$82,415,100	\$61,088,759	\$57,883,150	\$67,476,873
% Change	-0.5%	-4.7%	3.6%	11.3%	8.5%	6.6%	3.6%	10.3%	-6.6%	-16.6%	-13.8%	-2.7%	
Energy Cost By Energy Type													
Electricity													
FY 2019	\$562,073,139	\$59,686,214	\$59,959,637	\$67,440,147	\$54,390,663	\$47,224,800	\$46,478,603	\$49,980,517	\$44,823,796	\$44,860,828	\$38,535,410	\$48,692,523	
FY 2018	\$578,141,108	\$63,576,193	\$59,175,998	\$60,964,387	\$51,479,571	\$46,437,508	\$48,498,486	\$45,309,698	\$51,872,445	\$58,642,688	\$42,309,820	\$49,874,314	\$61,602,159
% Change	-2.8%	-6.1%	1.3%	10.6%	5.7%	1.7%	-4.2%	10.3%	-13.6%	-23.5%	-8.9%	-2.4%	
Natural Gas													
FY 2019	\$120,229,691	\$4,179,552	\$4,294,525	\$3,874,622	\$4,816,019	\$10,879,257	\$17,784,436	\$22,361,125	\$19,873,089	\$16,187,529	\$9,926,610	\$6,052,928	
FY 2018	\$105,391,549	\$3,359,614	\$2,879,769	\$3,121,688	\$3,579,602	\$8,083,962	\$13,495,542	\$16,840,216	\$18,451,595	\$16,082,798	\$13,160,004	\$6,336,758	\$4,533,313
% Change	14.1%	24.4%	49.1%	24.1%	34.5%	34.6%	31.8%	32.8%	7.7%	0.7%	-24.6%	-4.5%	
Steam													
FY 2019	\$50,709,474	\$1,631,376	\$1,604,354	\$1,636,744	\$1,917,049	\$6,182,111	\$7,113,917	\$8,714,962	\$8,483,965	\$7,658,120	\$4,206,844	\$1,560,032	
FY 2018	\$53,002,223	\$1,774,744	\$1,518,824	\$1,448,177	\$1,294,354	\$5,801,184	\$6,875,936	\$11,306,617	\$8,001,763	\$7,689,613	\$5,618,934	\$1,672,078	\$1,341,400
% Change	-4.3%	-8.1%	5.6%	13.0%	48.1%	6.6%	3.5%	-22.9%	6.0%	-0.4%	-25.1%	-6.7%	



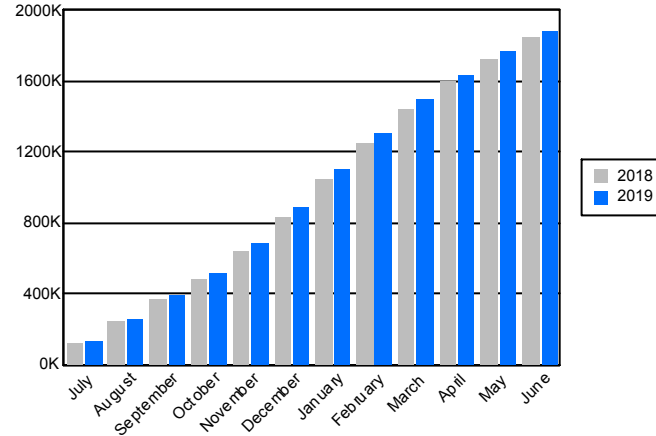
Core Report Citywide Total from Heat/Light/Power Expenditures: Energy Cost, Usage, and CO2e Emissions

June 2019

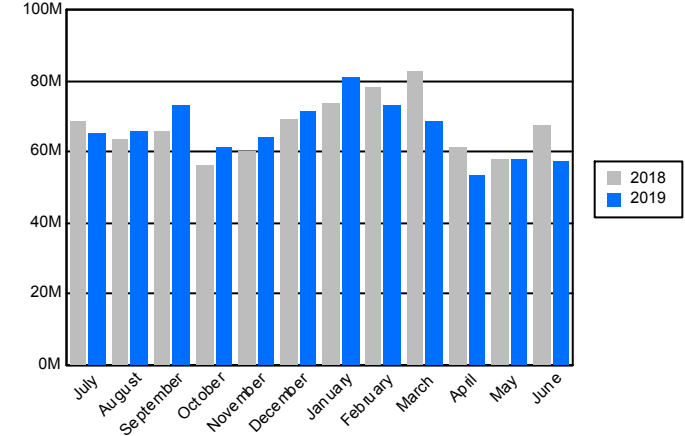
Citywide Energy Usage in Millions of BTUs



Citywide CO2e Emissions (FY Cumulative)

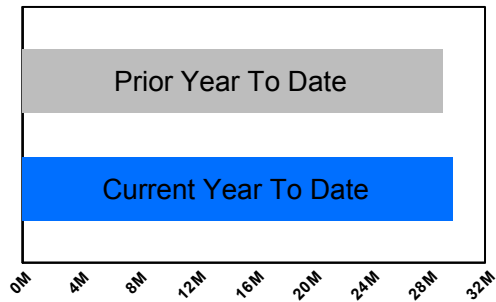


Citywide Cost

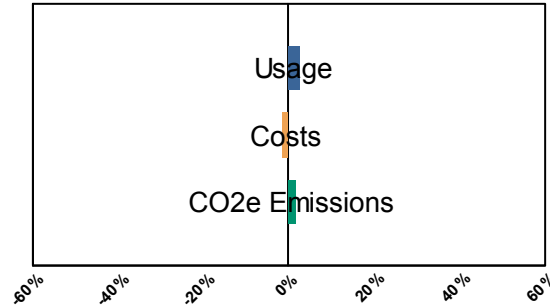


Current Year to Date compared to Prior Year to Date

Millions of BTUs



% Change



	Degree Days	
	Heating	Cooling
YTD Current FY	4,593	1,394
YTD Prior FY	4,548	1,289
June, 2019	4	247
June, 2018	11	220



Core Report Citywide Total from Heat/Light/Power Expenditures: Energy Cost, Usage, and CO2e Emissions

June 2019

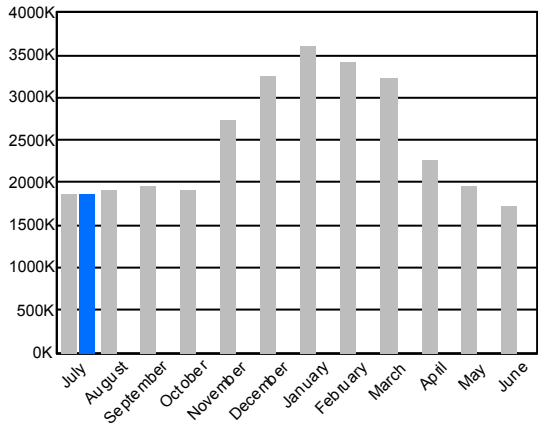
	Year To Date	July	August	September	October	November	December	January	February	March	April	May	June
Energy Usage													
Total Energy in Millions of BTUs													
FY 2019	29,862,970	1,879,699	1,904,918	1,954,439	1,919,425	2,730,096	3,265,923	3,607,187	3,416,121	3,235,484	2,248,522	1,980,794	1,720,361
FY 2018	29,143,125	1,825,837	1,720,009	1,763,151	1,728,868	2,507,928	3,120,413	3,640,081	3,339,521	3,211,656	2,668,976	1,801,828	1,814,858
% Change	2.5%	2.9%	10.8%	10.8%	11.0%	8.9%	4.7%	-0.9%	2.3%	0.7%	-15.8%	9.9%	-5.2%
Energy Usage By Energy Type													
Electric Demand (kw)													
FY 2019	10,053,357	940,690	908,764	1,010,441	930,518	782,893	744,110	740,854	731,027	736,447	765,033	858,240	904,340
FY 2018	10,081,984	951,619	892,703	926,911	949,426	794,567	751,746	752,607	747,231	732,283	748,129	887,641	947,121
% Change	-0.3%	-1.1%	1.8%	9.0%	-2.0%	-1.5%	-1.0%	-1.6%	-2.2%	0.6%	2.3%	-3.3%	-4.5%
Electric consumption (kwh)													
FY 2019	4,120,372,438	378,609,529	378,903,457	397,717,502	345,109,032	350,834,563	328,862,306	344,961,605	325,016,379	313,855,899	292,445,849	327,944,826	336,111,491
FY 2018	4,178,066,653	381,003,809	368,214,560	370,982,528	355,306,636	349,908,489	336,163,227	346,484,188	351,250,497	320,777,430	304,657,825	319,638,273	373,679,191
% Change	-1.4%	-0.6%	2.9%	7.2%	-2.9%	0.3%	-2.2%	-0.4%	-7.5%	-2.2%	-4.0%	2.6%	-10.1%
Natural gas (Therms)													
FY 2019	137,396,680	4,718,825	5,003,935	4,877,189	6,123,794	13,181,534	18,858,852	21,306,391	20,588,409	19,155,479	11,137,488	7,638,566	4,806,218
FY 2018	127,606,433	4,047,209	3,579,628	3,935,404	4,267,057	11,107,173	17,141,185	20,834,818	19,005,051	18,582,932	14,453,897	6,170,781	4,481,298
% Change	7.7%	16.6%	39.8%	23.9%	43.5%	18.7%	10.0%	2.3%	8.3%	3.1%	-22.9%	23.8%	7.3%
Steam (mlbs)													
FY 2019	1,844,350	103,495	99,650	97,845	115,638	192,041	230,608	267,812	221,987	222,655	122,322	87,418	82,879
FY 2018	1,900,088	108,085	94,282	92,597	80,113	181,683	231,806	334,815	215,004	231,430	164,512	83,983	81,778
% Change	-2.9%	-4.2%	5.7%	5.7%	44.3%	5.7%	-0.5%	-20.0%	3.2%	-3.8%	-25.6%	4.1%	1.3%
Energy Cost													
Total Cost													
FY 2019	\$792,299,757	\$65,412,892	\$65,763,772	\$72,861,020	\$61,101,029	\$64,262,982	\$71,348,744	\$80,981,760	\$73,086,764	\$68,742,066	\$53,499,278	\$57,740,892	\$57,498,558
FY 2018	\$804,135,168	\$68,732,597	\$63,595,979	\$65,567,771	\$56,400,352	\$60,349,941	\$68,881,647	\$73,481,467	\$78,351,424	\$82,396,781	\$61,065,665	\$57,881,020	\$67,430,523
% Change	-1.5%	-4.8%	3.4%	11.1%	8.3%	6.5%	3.6%	10.2%	-6.7%	-16.6%	-12.4%	-0.2%	-14.7%
Energy Cost By Energy Type													
Electricity													
FY 2019	\$616,285,785	\$59,602,251	\$59,864,598	\$67,350,438	\$54,362,934	\$47,189,329	\$46,412,188	\$49,928,750	\$44,751,069	\$44,908,320	\$39,391,794	\$50,042,698	\$52,481,415
FY 2018	\$639,838,823	\$63,597,686	\$59,196,892	\$60,997,427	\$51,525,782	\$46,463,594	\$48,506,433	\$45,329,674	\$51,892,494	\$58,619,448	\$42,283,450	\$49,871,178	\$61,554,764
% Change	-3.7%	-6.3%	1.1%	10.4%	5.5%	1.6%	-4.3%	10.1%	-13.8%	-23.4%	-6.8%	0.3%	-14.7%
Natural Gas													
FY 2019	\$123,980,754	\$4,179,264	\$4,294,820	\$3,873,837	\$4,821,046	\$10,891,542	\$17,822,638	\$22,338,048	\$19,851,731	\$16,175,627	\$9,900,640	\$6,139,959	\$3,691,602
FY 2018	\$109,952,721	\$3,360,167	\$2,880,263	\$3,122,168	\$3,580,216	\$8,085,164	\$13,499,278	\$16,845,176	\$18,457,167	\$16,087,720	\$13,163,281	\$6,337,765	\$4,534,358
% Change	12.8%	24.4%	49.1%	24.1%	34.7%	34.7%	32.0%	32.6%	7.6%	0.5%	-24.8%	-3.1%	-18.6%
Steam													
FY 2019	\$52,033,219	\$1,631,376	\$1,604,354	\$1,636,744	\$1,917,049	\$6,182,111	\$7,113,917	\$8,714,962	\$8,483,965	\$7,658,120	\$4,206,844	\$1,558,236	\$1,325,541
FY 2018	\$54,343,623	\$1,774,744	\$1,518,824	\$1,448,177	\$1,294,354	\$5,801,184	\$6,875,936	\$11,306,617	\$8,001,763	\$7,689,613	\$5,618,934	\$1,672,078	\$1,341,400
% Change	-4.3%	-8.1%	5.6%	13.0%	48.1%	6.6%	3.5%	-22.9%	6.0%	-0.4%	-25.1%	-6.8%	-1.2%



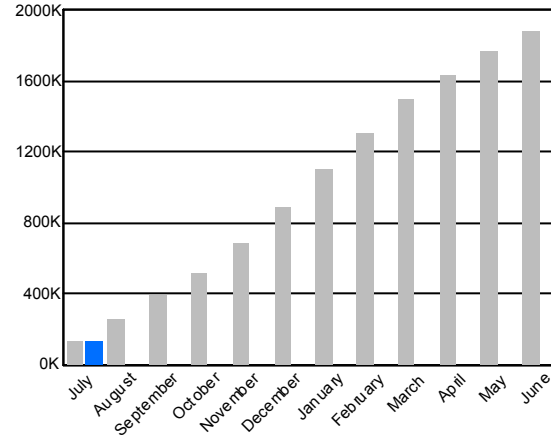
Core Report Citywide Total from Heat/Light/Power Expenditures: Energy Cost, Usage, and CO2e Emissions

July 2019

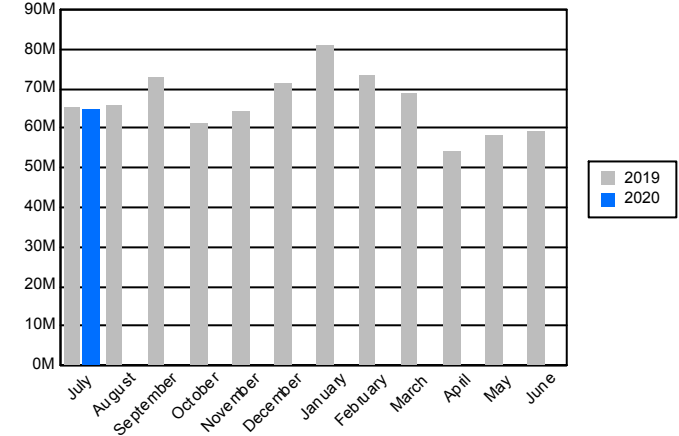
Citywide Energy Usage in Millions of BTUs



Citywide CO2e Emissions (FY Cumulative)

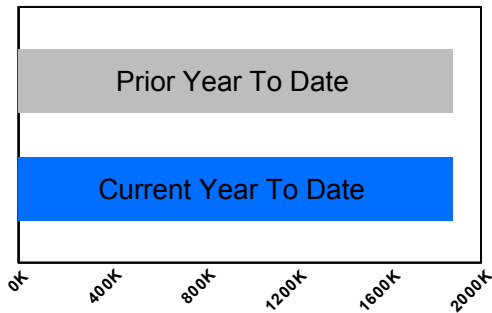


Citywide Cost

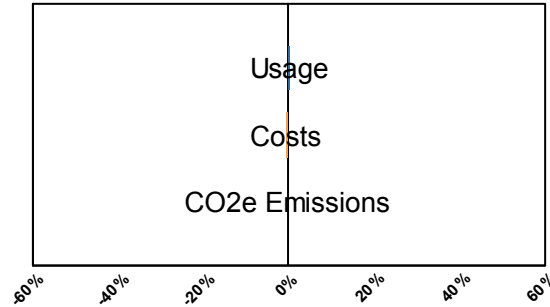


Current Year to Date compared to Prior Year to Date

Millions of BTUs



% Change



	Degree Days	
	Heating	Cooling
YTD Current FY	0	481
YTD Prior FY	0	399
July, 2019	0	481
July, 2018	0	399



Core Report Citywide Total from Heat/Light/Power Expenditures: Energy Cost, Usage, and CO2e Emissions

July 2019

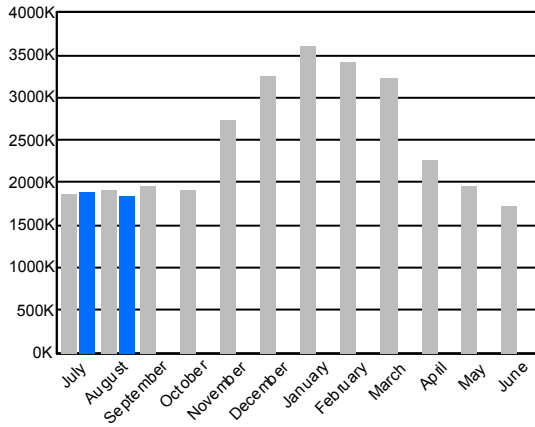
	Year To Date	July	August	September	October	November	December	January	February	March	April	May	June
Energy Usage													
Total Energy in Millions of BTUs													
FY 2020	1,878,653	1,878,653											
FY 2019	1,878,522	1,878,522	1,905,102	1,954,816	1,919,617	2,726,389	3,258,795	3,603,733	3,412,532	3,231,257	2,261,875	1,974,924	1,732,100
% Change	0.0%	0.0%											
Energy Usage By Energy Type													
Electric Demand (kw)													
FY 2020	939,346	939,346											
FY 2019	941,700	941,700	910,713	1,012,430	931,604	784,416	745,746	742,137	732,408	754,590	766,183	859,130	905,625
% Change	-0.2%	-0.2%											
Electric consumption (kwh)													
FY 2020	373,106,648	373,106,648											
FY 2019	378,840,832	378,840,832	379,487,941	398,245,509	345,757,557	351,403,562	329,378,646	345,475,030	325,751,847	314,368,475	296,537,314	325,747,722	333,929,276
% Change	-1.5%	-1.5%											
Natural gas (Therms)													
FY 2020	4,841,645	4,841,645											
FY 2019	4,699,157	4,699,157	4,985,823	4,862,939	6,103,580	13,125,041	18,769,952	21,254,321	20,527,418	19,095,716	11,130,641	7,654,643	4,997,640
% Change	3.0%	3.0%											
Steam (mlbs)													
FY 2020	108,376	108,376											
FY 2019	103,495	103,495	99,650	97,845	115,638	192,041	230,608	267,812	221,987	222,655	122,388	87,437	82,919
% Change	4.7%	4.7%											
Energy Cost													
Total Cost													
FY 2020	\$64,827,133	\$64,827,133											
FY 2019	\$65,432,070	\$65,432,070	\$65,824,924	\$72,939,206	\$61,145,221	\$64,287,199	\$71,330,258	\$80,987,270	\$73,154,969	\$68,895,569	\$54,111,011	\$57,958,933	\$59,392,643
% Change	-0.9%	-0.9%											
Energy Cost By Energy Type													
Electricity													
FY 2020	\$59,900,232	\$59,900,232											
FY 2019	\$59,641,129	\$59,641,129	\$59,944,315	\$67,443,354	\$54,428,402	\$47,265,357	\$46,490,162	\$50,002,410	\$44,890,260	\$45,121,614	\$40,016,997	\$50,247,399	\$54,255,814
% Change	0.4%	0.4%											
Natural Gas													
FY 2020	\$3,378,507	\$3,378,507											
FY 2019	\$4,159,566	\$4,159,566	\$4,276,255	\$3,859,108	\$4,799,770	\$10,839,731	\$17,726,179	\$22,269,897	\$19,780,745	\$16,115,835	\$9,884,624	\$6,152,460	\$3,809,350
% Change	-18.8%	-18.8%											
Steam													
FY 2020	\$1,548,394	\$1,548,394											
FY 2019	\$1,631,376	\$1,631,376	\$1,604,354	\$1,636,744	\$1,917,049	\$6,182,111	\$7,113,917	\$8,714,962	\$8,483,965	\$7,658,120	\$4,209,391	\$1,559,075	\$1,327,479
% Change	-5.1%	-5.1%											



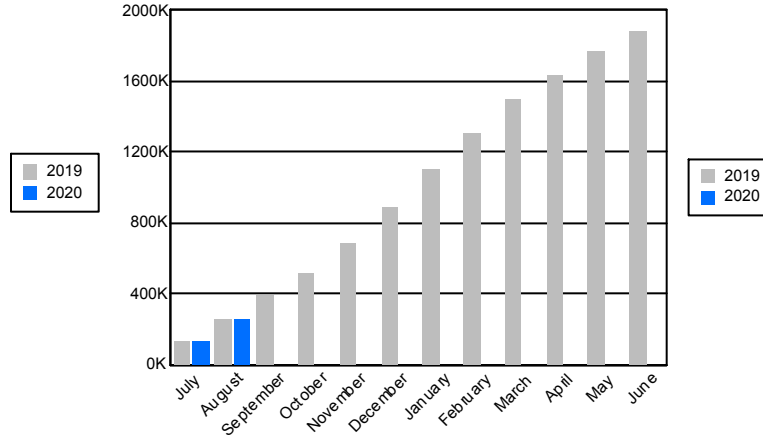
Core Report Citywide Total from Heat/Light/Power Expenditures: Energy Cost, Usage, and CO2e Emissions

August 2019

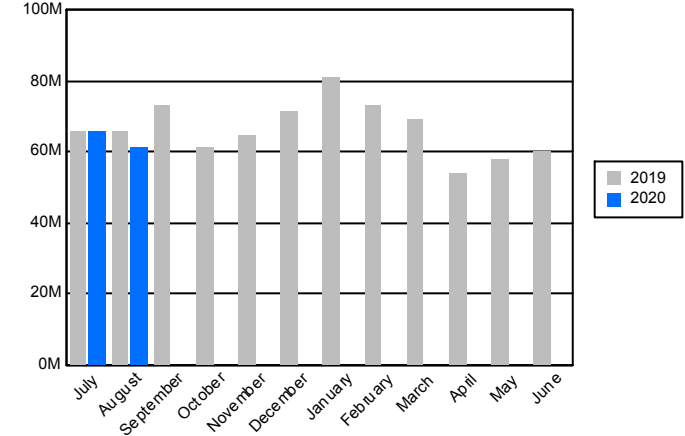
Citywide Energy Usage in Millions of BTUs



Citywide CO2e Emissions (FY Cumulative)

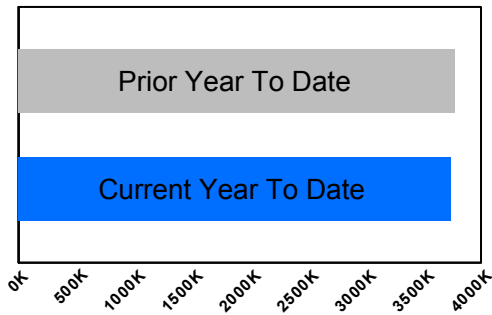


Citywide Cost

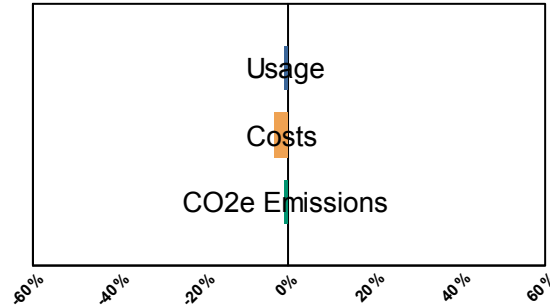


Current Year to Date compared to Prior Year to Date

Millions of BTUs



% Change



	Degree Days	
	Heating	Cooling
YTD Current FY	0	837
YTD Prior FY	0	812
August, 2019	0	356
August, 2018	0	413



Core Report Citywide Total from Heat/Light/Power Expenditures: Energy Cost, Usage, and CO2e Emissions

August 2019

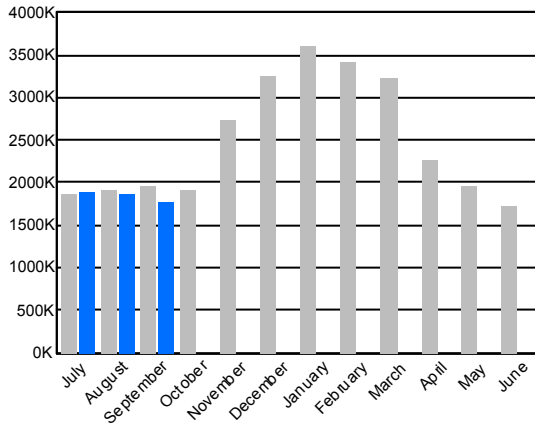
Year To Date	July	August	September	October	November	December	January	February	March	April	May	June	
Energy Usage													
Total Energy in Millions of BTUs													
FY 2020	3,741,771	1,894,938	1,846,832										
FY 2019	3,783,553	1,878,479	1,905,073	1,954,819	1,921,007	2,732,295	3,260,452	3,605,223	3,413,945	3,232,291	2,259,195	1,960,899	1,729,570
% Change	-1.1%	0.9%	-3.1%										
Energy Usage By Energy Type													
Electric Demand (kw)													
FY 2020	1,840,409	937,574	902,835										
FY 2019	1,852,597	941,794	910,803	1,012,700	931,570	784,632	745,886	742,160	732,153	754,622	761,039	850,807	899,453
% Change	-0.7%	-0.4%	-0.9%										
Electric consumption (kwh)													
FY 2020	754,169,624	372,702,463	381,467,161										
FY 2019	758,346,084	378,846,933	379,499,151	398,278,511	345,753,530	351,449,870	329,422,589	345,517,417	325,904,061	314,572,141	296,459,997	322,596,438	333,554,770
% Change	-0.6%	-1.6%	0.5%										
Natural gas (Therms)													
FY 2020	9,476,505	5,019,847	4,456,658										
FY 2019	9,683,678	4,698,521	4,985,157	4,861,838	6,117,619	13,182,519	18,785,024	21,267,777	20,536,353	19,099,109	11,106,474	7,621,945	4,980,126
% Change	-2.1%	6.8%	-10.6%										
Steam (mlbs)													
FY 2020	197,049	108,237	88,812										
FY 2019	203,145	103,495	99,650	97,845	115,638	192,041	230,608	267,812	221,987	222,655	122,388	87,437	83,366
% Change	-3.0%	4.6%	-10.9%										
Energy Cost													
Total Cost													
FY 2020	\$126,910,363	\$65,705,793	\$61,204,570										
FY 2019	\$131,450,021	\$65,529,340	\$65,920,680	\$73,059,424	\$61,206,705	\$64,387,221	\$71,393,654	\$81,049,566	\$73,154,046	\$68,896,286	\$54,051,147	\$57,837,599	\$59,938,717
% Change	-3.5%	0.3%	-7.2%										
Energy Cost By Energy Type													
Electricity													
FY 2020	\$117,457,769	\$60,680,971	\$56,776,797										
FY 2019	\$119,780,635	\$59,739,515	\$60,041,120	\$67,565,032	\$54,476,546	\$47,316,653	\$46,533,861	\$50,045,515	\$44,877,616	\$45,118,863	\$39,977,095	\$50,152,620	\$54,689,235
% Change	-1.9%	1.6%	-5.4%										
Natural Gas													
FY 2020	\$6,628,966	\$3,477,985	\$3,150,981										
FY 2019	\$8,433,655	\$4,158,449	\$4,275,206	\$3,857,648	\$4,813,111	\$10,888,457	\$17,745,876	\$22,289,089	\$19,792,465	\$16,119,303	\$9,864,661	\$6,125,904	\$3,913,996
% Change	-21.4%	-16.4%	-26.3%										
Steam													
FY 2020	\$2,823,628	\$1,546,837	\$1,276,791										
FY 2019	\$3,235,730	\$1,631,376	\$1,604,354	\$1,636,744	\$1,917,049	\$6,182,111	\$7,113,917	\$8,714,962	\$8,483,965	\$7,658,120	\$4,209,391	\$1,559,075	\$1,335,485
% Change	-12.7%	-5.2%	-20.4%										



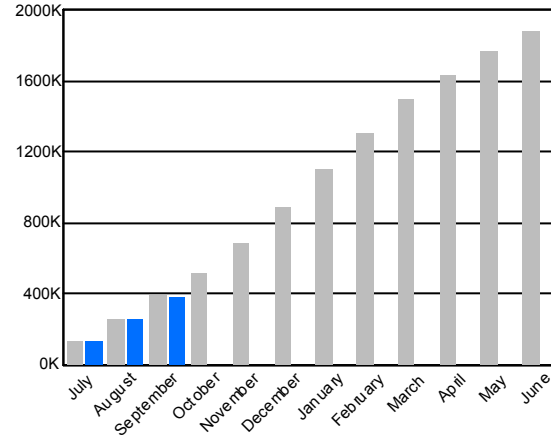
Core Report Citywide Total from Heat/Light/Power Expenditures: Energy Cost, Usage, and CO2e Emissions

September 2019

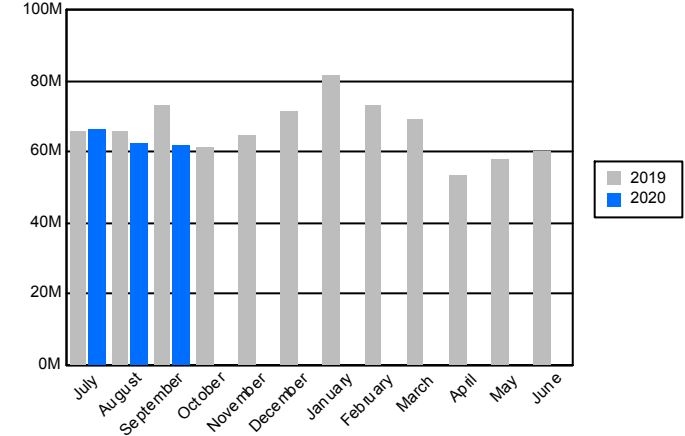
Citywide Energy Usage in Millions of BTUs



Citywide CO2e Emissions (FY Cumulative)

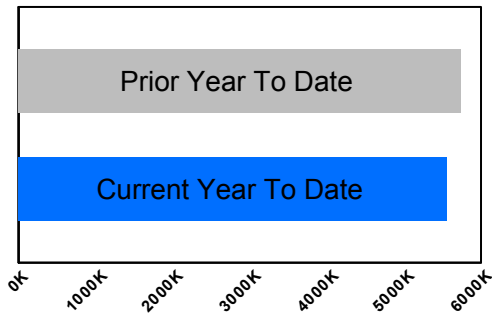


Citywide Cost

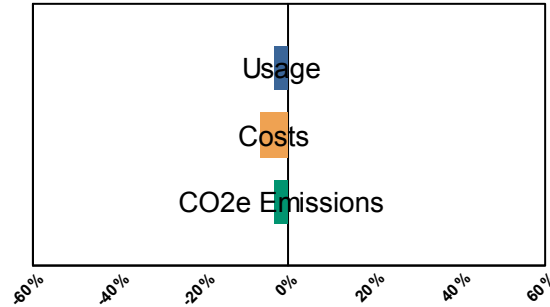


Current Year to Date compared to Prior Year to Date

Millions of BTUs



% Change



	Degree Days	
	Heating	Cooling
YTD Current FY	5	1,029
YTD Prior FY	23	1,015
September, 2019	5	192
September, 2018	23	203



Core Report Citywide Total from Heat/Light/Power Expenditures: Energy Cost, Usage, and CO2e Emissions

September 2019

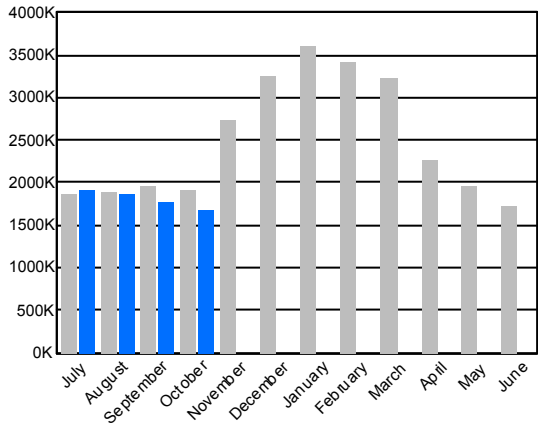
	Year To Date	July	August	September	October	November	December	January	February	March	April	May	June
Energy Usage													
Total Energy in Millions of BTUs													
FY 2020	5,548,258	1,898,774	1,871,906	1,777,577									
FY 2019	5,739,266	1,878,688	1,905,362	1,955,216	1,921,225	2,733,502	3,261,005	3,606,339	3,416,361	3,231,429	2,262,237	1,961,618	1,736,778
% Change	-3.3%	1.1%	-1.8%	-9.1%									
Energy Usage By Energy Type													
Electric Demand (kw)													
FY 2020	2,788,590	938,198	903,454	946,938									
FY 2019	2,867,090	942,230	911,690	1,013,170	931,243	784,334	745,608	747,045	733,079	755,480	742,977	851,419	901,159
% Change	-2.7%	-0.4%	-0.9%	-6.5%									
Electric consumption (kwh)													
FY 2020	1,109,184,367	373,607,237	382,029,001	353,548,129									
FY 2019	1,156,739,392	378,892,135	379,519,646	398,327,611	345,720,322	351,471,038	329,242,484	345,558,786	326,317,434	313,974,143	296,851,167	322,559,041	335,400,184
% Change	-4.1%	-1.4%	0.7%	-11.2%									
Natural gas (Therms)													
FY 2020	14,350,337	5,023,049	4,682,304	4,644,984									
FY 2019	14,550,548	4,699,064	4,987,346	4,864,138	6,120,933	13,193,868	18,796,700	21,277,531	20,546,400	19,110,895	11,123,545	7,630,412	4,989,223
% Change	-1.4%	6.9%	-6.1%	-4.5%									
Steam (mlbs)													
FY 2020	293,219	108,620	89,342	95,257									
FY 2019	300,990	103,495	99,650	97,845	115,638	192,041	230,608	267,812	221,987	222,655	122,388	87,437	83,366
% Change	-2.6%	5.0%	-10.3%	-2.6%									
Energy Cost													
Total Cost													
FY 2020	\$190,243,810	\$66,074,052	\$62,166,296	\$62,003,462									
FY 2019	\$204,533,874	\$65,535,084	\$65,934,751	\$73,064,039	\$61,198,426	\$64,388,112	\$71,399,035	\$81,259,931	\$73,291,604	\$68,969,091	\$53,544,932	\$57,974,309	\$60,370,264
% Change	-7.0%	0.8%	-5.7%	-15.1%									
Energy Cost By Energy Type													
Electricity													
FY 2020	\$175,948,873	\$61,036,279	\$57,590,593	\$57,322,001									
FY 2019	\$187,362,900	\$59,744,437	\$60,051,998	\$67,566,465	\$54,464,128	\$47,306,387	\$46,526,780	\$50,242,817	\$45,002,189	\$45,177,803	\$39,451,290	\$50,278,875	\$55,076,359
% Change	-6.1%	2.2%	-4.1%	-15.2%									
Natural Gas													
FY 2020	\$10,116,755	\$3,485,669	\$3,290,673	\$3,340,413									
FY 2019	\$12,298,499	\$4,159,271	\$4,278,399	\$3,860,830	\$4,817,249	\$10,899,614	\$17,758,338	\$22,302,152	\$19,805,451	\$16,133,168	\$9,884,251	\$6,136,360	\$3,958,419
% Change	-17.7%	-16.2%	-23.1%	-13.5%									
Steam													
FY 2020	\$4,178,182	\$1,552,104	\$1,285,030	\$1,341,048									
FY 2019	\$4,872,475	\$1,631,376	\$1,604,354	\$1,636,744	\$1,917,049	\$6,182,111	\$7,113,917	\$8,714,962	\$8,483,965	\$7,658,120	\$4,209,391	\$1,559,075	\$1,335,485
% Change	-14.2%	-4.9%	-19.9%	-18.1%									



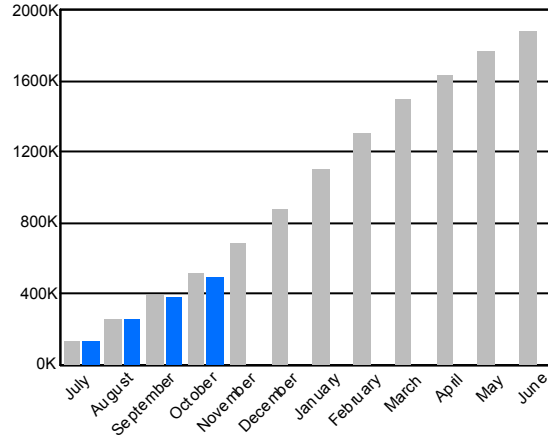
Core Report Citywide Total from Heat/Light/Power Expenditures: Energy Cost, Usage, and CO2e Emissions

October 2019

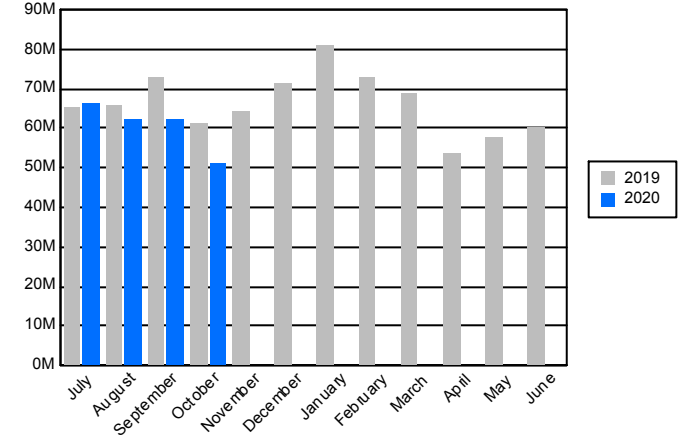
Citywide Energy Usage in Millions of BTUs



Citywide CO2e Emissions (FY Cumulative)

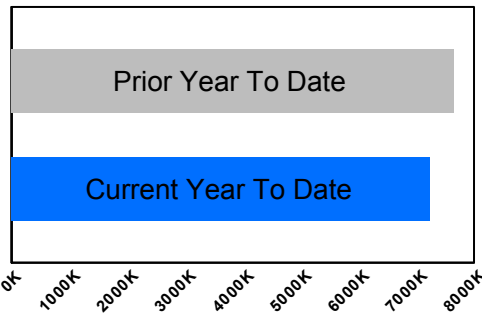


Citywide Cost

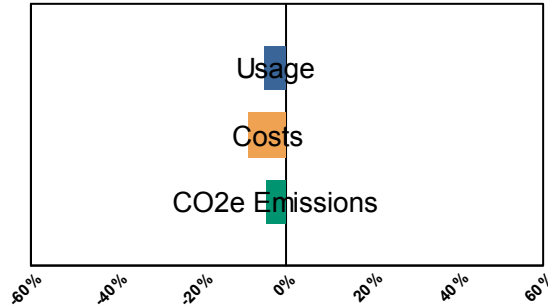


Current Year to Date compared to Prior Year to Date

Millions of BTUs



% Change



	Degree Days	
	Heating	Cooling
YTD Current FY	167	1,060
YTD Prior FY	299	1,074
October, 2019	162	31
October, 2018	276	59



Core Report Citywide Total from Heat/Light/Power Expenditures: Energy Cost, Usage, and CO2e Emissions

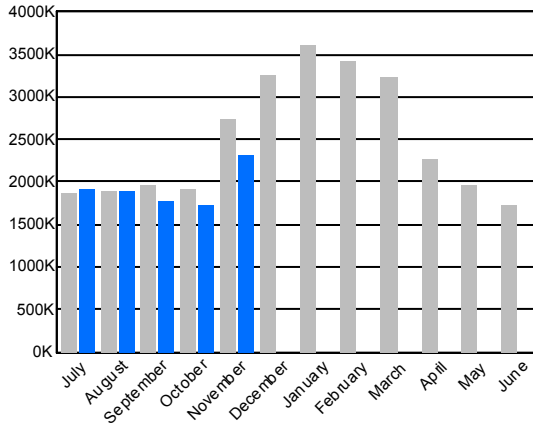
October 2019

Year To Date	July	August	September	October	November	December	January	February	March	April	May	June
Energy Usage												
Total Energy in Millions of BTUs												
FY 2020	7,253,377	1,905,511	1,878,908	1,778,378	1,690,581							
FY 2019	7,648,345	1,875,773	1,902,495	1,952,051	1,918,026	2,729,550	3,258,278	3,604,253	3,415,236	3,231,197	2,264,194	1,962,474
% Change	-5.2%	1.6%	-1.2%	-8.9%	-11.9%							
Energy Usage By Energy Type												
Electric Demand (kw)												
FY 2020	3,683,109	934,570	896,905	935,030	916,604							
FY 2019	3,785,848	939,047	908,466	1,009,924	928,411	780,823	742,108	738,507	726,484	751,041	738,947	847,178
% Change	-2.7%	-0.5%	-1.3%	-7.4%	-1.3%							
Electric consumption (kwh)												
FY 2020	1,432,175,548	375,445,495	382,926,178	352,654,573	321,149,302							
FY 2019	1,498,858,146	378,074,218	378,682,829	397,393,099	344,708,000	350,223,780	328,513,242	345,141,520	325,936,362	313,947,232	297,234,320	322,864,657
% Change	-4.4%	-0.7%	1.1%	-11.3%	-6.8%							
Natural gas (Therms)												
FY 2020	19,451,238	5,027,677	4,708,837	4,654,782	5,059,942							
FY 2019	20,672,939	4,697,827	4,987,240	4,864,380	6,123,492	13,196,921	18,794,312	21,270,907	20,548,156	19,109,493	11,130,039	7,628,539
% Change	-5.9%	7.0%	-5.6%	-4.3%	-17.4%							
Steam (mlbs)												
FY 2020	376,160	108,620	90,493	97,826	79,221							
FY 2019	416,628	103,495	99,650	97,845	115,638	192,041	230,608	267,812	221,987	222,655	122,388	87,437
% Change	-9.7%	5.0%	-9.2%	0.0%	-31.5%							
Energy Cost												
Total Cost												
FY 2020	\$241,296,477	\$66,061,747	\$62,031,993	\$61,969,202	\$51,233,536							
FY 2019	\$265,240,920	\$65,416,562	\$65,812,997	\$72,935,668	\$61,075,693	\$64,243,790	\$71,261,587	\$80,939,723	\$73,065,232	\$68,860,620	\$53,475,661	\$57,859,667
% Change	-9.0%	1.0%	-5.7%	-15.0%	-16.1%							
Energy Cost By Energy Type												
Electricity												
FY 2020	\$221,743,922	\$61,020,585	\$57,419,468	\$57,197,692	\$46,106,177							
FY 2019	\$241,333,948	\$59,627,225	\$59,930,431	\$67,437,897	\$54,338,395	\$47,157,969	\$46,390,279	\$49,928,335	\$44,771,426	\$45,069,428	\$39,371,638	\$50,166,269
% Change	-8.1%	2.3%	-4.2%	-15.2%	-15.1%							
Natural Gas												
FY 2020	\$14,112,180	\$3,489,058	\$3,313,844	\$3,399,039	\$3,910,240							
FY 2019	\$17,117,448	\$4,157,961	\$4,278,212	\$3,861,026	\$4,820,249	\$10,903,711	\$17,757,392	\$22,296,426	\$19,809,842	\$16,133,073	\$9,894,632	\$6,134,323
% Change	-17.6%	-16.1%	-22.5%	-12.0%	-18.9%							
Steam												
FY 2020	\$5,440,376	\$1,552,104	\$1,298,681	\$1,372,471	\$1,217,119							
FY 2019	\$6,789,524	\$1,631,376	\$1,604,354	\$1,636,744	\$1,917,049	\$6,182,111	\$7,113,917	\$8,714,962	\$8,483,965	\$7,658,120	\$4,209,391	\$1,559,075
% Change	-19.9%	-4.9%	-19.1%	-16.1%	-36.5%							

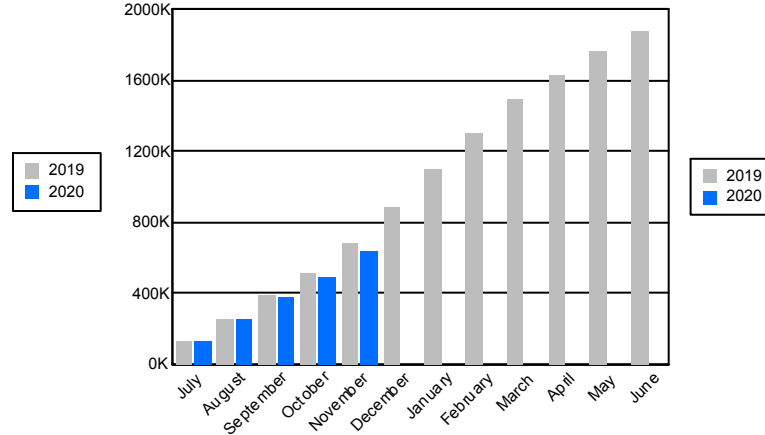
Core Report Citywide Total from Heat/Light/Power Expenditures: Energy Cost, Usage, and CO2e Emissions

November 2019

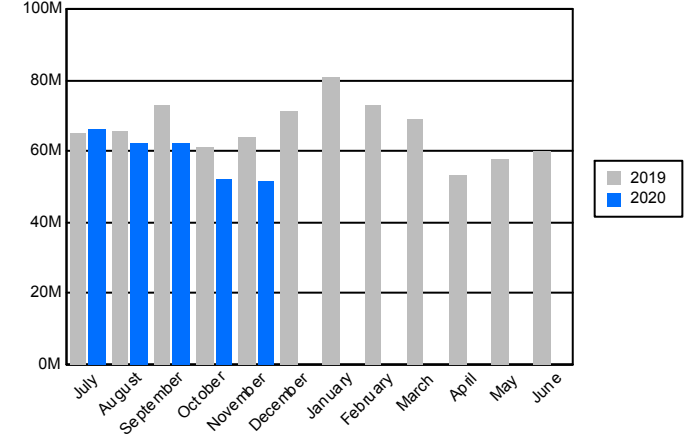
Citywide Energy Usage in Millions of BTUs



Citywide CO2e Emissions (FY Cumulative)

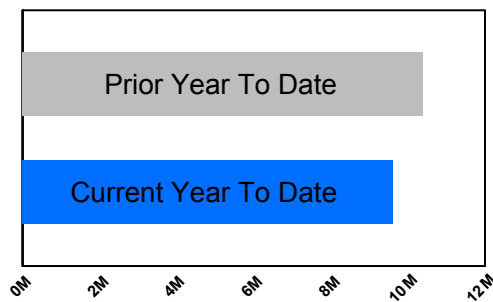


Citywide Cost

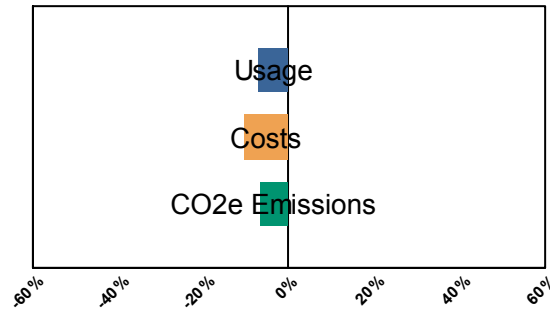


Current Year to Date compared to Prior Year to Date

Millions of BTUs



% Change



	Degree Days	
	Heating	Cooling
YTD Current FY	786	1,060
YTD Prior FY	911	1,077
November, 2019	619	0
November, 2018	612	3

Core Report Citywide Total from Heat/Light/Power Expenditures: Energy Cost, Usage, and CO2e Emissions

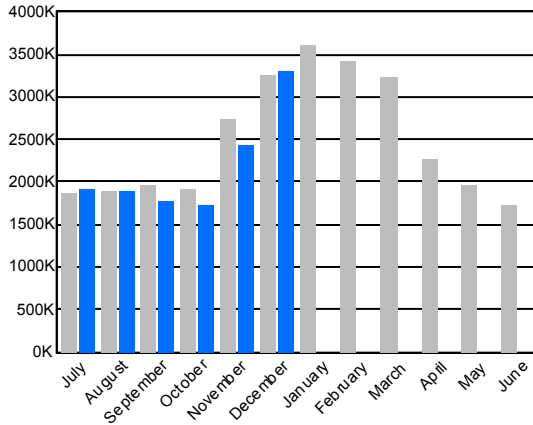
November 2019

Year To Date	July	August	September	October	November	December	January	February	March	April	May	June	
Energy Usage													
Total Energy in Millions of BTUs													
FY 2020	9,616,487	1,908,882	1,881,447	1,771,733	1,730,127	2,324,299							
FY 2019	10,386,732	1,876,888	1,903,175	1,953,099	1,920,310	2,733,259	3,260,983	3,607,641	3,418,972	3,235,254	2,267,123	1,965,397	1,738,388
% Change	-7.4%	1.7%	-1.1%	-9.3%	-9.9%	-15.0%							
Energy Usage By Energy Type													
Electric Demand (kw)													
FY 2020	4,469,892	940,276	900,843	927,873	923,210	777,690							
FY 2019	4,571,584	939,971	909,494	1,010,657	929,519	781,943	743,216	739,998	728,804	753,095	741,190	850,844	898,453
% Change	-2.2%	0.0%	-1.0%	-8.2%	-0.7%	-0.5%							
Electric consumption (kwh)													
FY 2020	1,759,489,008	376,547,091	383,686,775	350,018,436	323,291,442	325,945,264							
FY 2019	1,851,142,240	378,334,799	378,898,093	397,715,569	345,323,992	350,869,787	329,165,600	345,679,375	326,654,888	314,663,356	297,779,589	323,389,861	335,559,881
% Change	-5.0%	-0.5%	1.3%	-12.0%	-6.4%	-7.1%							
Natural gas (Therms)													
FY 2020	30,429,928	5,023,784	4,708,270	4,678,304	5,382,289	10,637,281							
FY 2019	33,887,906	4,700,090	4,986,693	4,863,855	6,125,310	13,211,958	18,799,100	21,286,435	20,560,992	19,125,624	11,140,722	7,639,849	4,999,868
% Change	-10.2%	6.9%	-5.6%	-3.8%	-12.1%	-19.5%							
Steam (mlbs)													
FY 2020	508,744	108,620	90,493	97,826	79,221	132,584							
FY 2019	608,669	103,495	99,650	97,845	115,638	192,041	230,608	267,812	221,987	222,655	122,388	87,437	83,366
% Change	-16.4%	5.0%	-9.2%	0.0%	-31.5%	-31.0%							
Energy Cost													
Total Cost													
FY 2020	\$294,695,744	\$66,308,288	\$62,238,248	\$62,254,879	\$52,279,538	\$51,614,792							
FY 2019	\$329,721,942	\$65,454,047	\$65,849,427	\$72,967,216	\$61,136,600	\$64,314,653	\$71,329,897	\$81,032,741	\$73,188,390	\$68,963,235	\$53,578,639	\$58,006,101	\$60,332,505
% Change	-10.6%	1.3%	-5.5%	-14.7%	-14.5%	-19.7%							
Energy Cost By Energy Type													
Electricity													
FY 2020	\$262,556,859	\$61,272,104	\$57,622,152	\$57,459,736	\$46,919,550	\$39,283,317							
FY 2019	\$288,712,435	\$59,661,979	\$59,967,521	\$67,469,980	\$54,397,432	\$47,215,522	\$46,453,076	\$50,003,559	\$44,880,778	\$45,155,471	\$39,463,147	\$50,302,082	\$55,031,245
% Change	-9.1%	2.7%	-3.9%	-14.8%	-13.7%	-16.8%							
Natural Gas													
FY 2020	\$22,516,477	\$3,484,080	\$3,317,415	\$3,422,671	\$4,142,869	\$8,149,442							
FY 2019	\$28,037,872	\$4,160,691	\$4,277,551	\$3,860,491	\$4,822,119	\$10,917,020	\$17,762,903	\$22,314,220	\$19,823,647	\$16,149,644	\$9,906,102	\$6,144,944	\$3,965,775
% Change	-19.7%	-16.3%	-22.4%	-11.3%	-14.1%	-25.4%							
Steam													
FY 2020	\$9,622,408	\$1,552,104	\$1,298,681	\$1,372,471	\$1,217,119	\$4,182,032							
FY 2019	\$12,971,635	\$1,631,376	\$1,604,354	\$1,636,744	\$1,917,049	\$6,182,111	\$7,113,917	\$8,714,962	\$8,483,965	\$7,658,120	\$4,209,391	\$1,559,075	\$1,335,485
% Change	-25.8%	-4.9%	-19.1%	-16.1%	-36.5%	-32.4%							

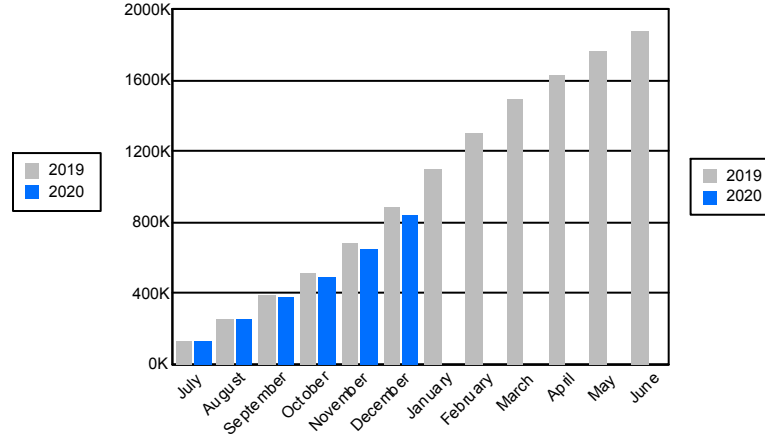
Core Report Citywide Total from Heat/Light/Power Expenditures: Energy Cost, Usage, and CO2e Emissions

December 2019

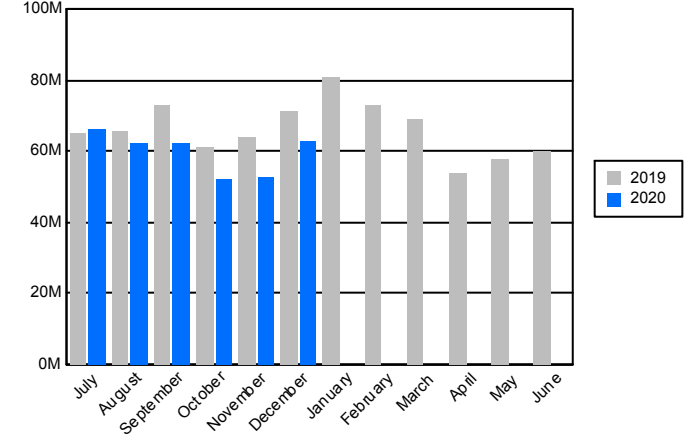
Citywide Energy Usage in Millions of BTUs



Citywide CO2e Emissions (FY Cumulative)

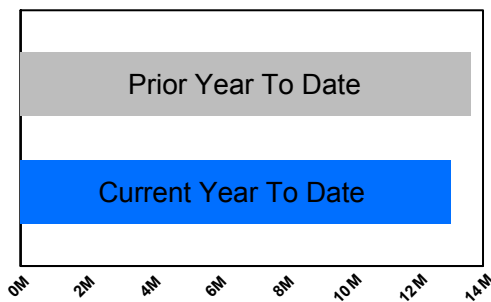


Citywide Cost

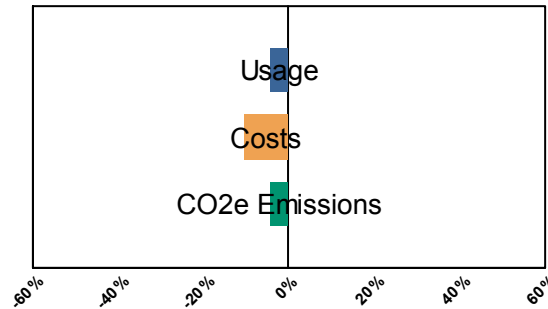


Current Year to Date compared to Prior Year to Date

Millions of BTUs



% Change



	Degree Days	
	Heating	Cooling
YTD Current FY	1,599	1,060
YTD Prior FY	1,675	1,077
December, 2019	813	0
December, 2018	764	0

Core Report Citywide Total from Heat/Light/Power Expenditures: Energy Cost, Usage, and CO2e Emissions

December 2019

Year To Date	July	August	September	October	November	December	January	February	March	April	May	June	
Energy Usage													
Total Energy in Millions of BTUs													
FY 2020	13,021,354	1,910,036	1,882,408	1,773,105	1,731,430	2,425,376	3,298,998						
FY 2019	13,651,688	1,877,162	1,903,705	1,953,739	1,920,992	2,734,183	3,261,908	3,608,830	3,420,033	3,236,358	2,267,562	1,965,865	1,739,327
% Change	-4.6%	1.8%	-1.1%	-9.2%	-9.9%	-11.3%	1.1%						
Energy Usage By Energy Type													
Electric Demand (kw)													
FY 2020	5,229,102	940,900	901,631	927,747	924,486	779,362	754,976						
FY 2019	5,316,773	940,037	909,798	1,011,109	929,937	782,367	743,525	740,458	729,244	753,530	751,744	851,152	898,976
% Change	-1.6%	0.1%	-0.9%	-8.2%	-0.6%	-0.4%	1.5%						
Electric consumption (kwh)													
FY 2020	2,103,969,952	376,741,086	383,772,140	349,995,289	322,586,858	329,929,470	340,945,109						
FY 2019	2,181,311,950	378,414,883	379,051,265	397,900,863	345,521,460	351,076,431	329,347,048	345,861,317	326,830,334	314,869,614	297,940,157	323,505,629	335,697,482
% Change	-3.5%	-0.4%	1.2%	-12.0%	-6.6%	-6.0%	3.5%						
Natural gas (Therms)													
FY 2020	50,034,987	5,028,603	4,714,870	4,688,990	5,411,420	11,419,679	18,771,425						
FY 2019	52,692,466	4,700,090	4,986,759	4,863,930	6,125,386	13,214,144	18,802,157	21,292,115	20,565,621	19,129,625	11,139,627	7,640,579	5,004,571
% Change	-5.0%	7.0%	-5.5%	-3.6%	-11.7%	-13.6%	-0.2%						
Steam (mlbs)													
FY 2020	749,213	108,629	90,502	98,169	79,933	140,854	231,126						
FY 2019	839,277	103,495	99,650	97,845	115,638	192,041	230,608	267,812	221,987	222,655	122,388	87,437	83,366
% Change	-10.7%	5.0%	-9.2%	0.3%	-30.9%	-26.7%	0.2%						
Energy Cost													
Total Cost													
FY 2020	\$358,944,223	\$66,344,088	\$62,283,993	\$62,286,764	\$52,352,973	\$52,989,332	\$62,687,073						
FY 2019	\$401,165,477	\$65,459,437	\$65,863,352	\$72,991,153	\$61,159,764	\$64,339,482	\$71,352,289	\$81,065,993	\$73,217,573	\$68,992,837	\$53,941,923	\$58,024,411	\$60,360,318
% Change	-10.5%	1.4%	-5.4%	-14.7%	-14.4%	-17.6%	-12.1%						
Energy Cost By Energy Type													
Electricity													
FY 2020	\$303,541,836	\$61,301,924	\$57,660,151	\$57,473,936	\$46,949,783	\$39,908,461	\$40,247,580						
FY 2019	\$335,273,233	\$59,667,411	\$59,981,364	\$67,493,829	\$54,420,517	\$47,238,396	\$46,471,716	\$50,029,151	\$44,904,127	\$45,180,686	\$39,827,727	\$50,319,189	\$55,053,850
% Change	-9.5%	2.7%	-3.9%	-14.8%	-13.7%	-15.5%	-13.4%						
Natural Gas													
FY 2020	\$38,427,376	\$3,489,394	\$3,324,499	\$3,433,606	\$4,172,143	\$8,677,167	\$15,330,567						
FY 2019	\$45,806,692	\$4,160,650	\$4,277,633	\$3,860,580	\$4,822,198	\$10,918,976	\$17,766,655	\$22,321,880	\$19,829,482	\$16,154,032	\$9,904,805	\$6,146,147	\$3,970,982
% Change	-16.1%	-16.1%	-22.3%	-11.1%	-13.5%	-20.5%	-13.7%						
Steam													
FY 2020	\$16,975,010	\$1,552,769	\$1,299,343	\$1,379,222	\$1,231,047	\$4,403,703	\$7,108,926						
FY 2019	\$20,085,552	\$1,631,376	\$1,604,354	\$1,636,744	\$1,917,049	\$6,182,111	\$7,113,917	\$8,714,962	\$8,483,965	\$7,658,120	\$4,209,391	\$1,559,075	\$1,335,485
% Change	-15.5%	-4.8%	-19.0%	-15.7%	-35.8%	-28.8%	-0.1%						