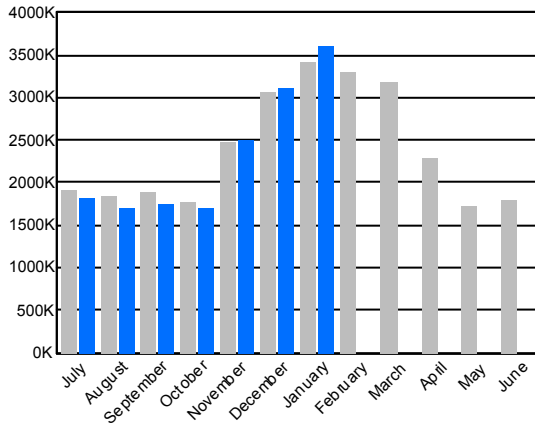




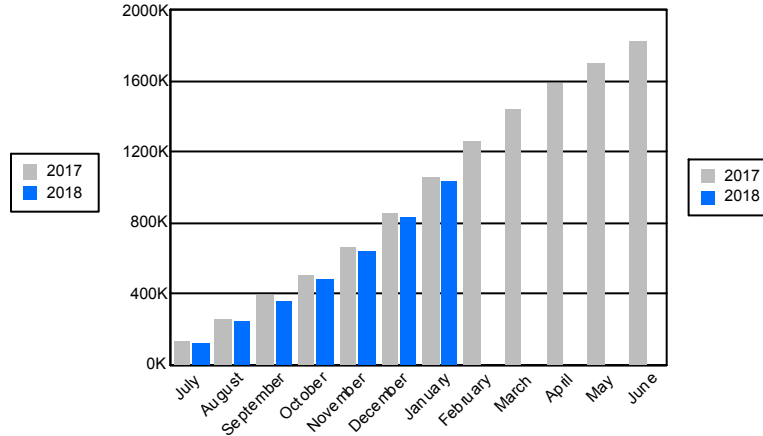
Core Report Citywide Total from Heat/Light/Power Expenditures: Energy Cost, Usage, and CO2e Emissions

January 2018

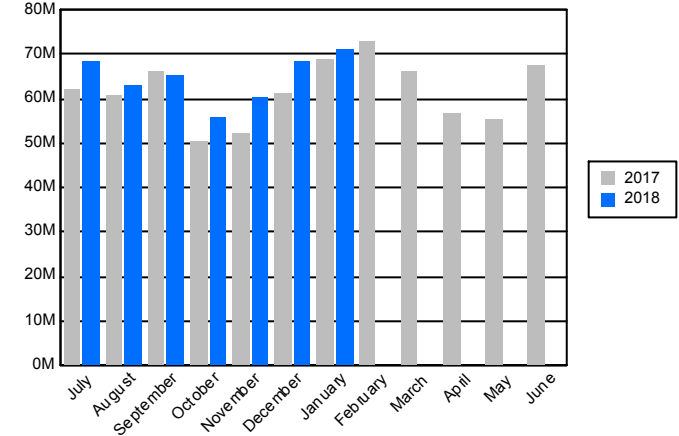
Citywide Energy Usage in Millions of BTUs



Citywide CO2e Emissions (FY Cumulative)

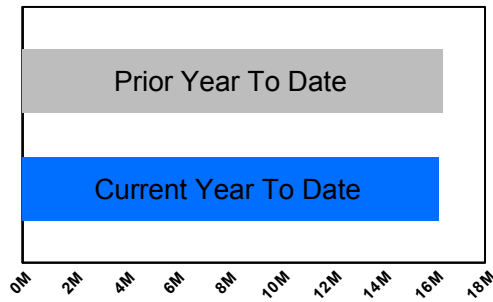


Citywide Cost

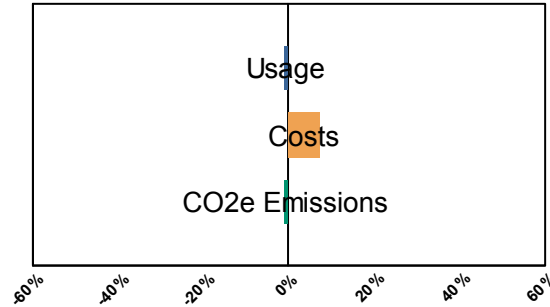


Current Year to Date compared to Prior Year to Date

Millions of BTUs



% Change



	Degree Days	
	Heating	Cooling
YTD Current FY	2,608	933
YTD Prior FY	2,334	1,135
January, 2018	1,026	0
January, 2017	829	0



## Core Report Citywide Total from Heat/Light/Power Expenditures: Energy Cost, Usage, and CO2e Emissions

January 2018

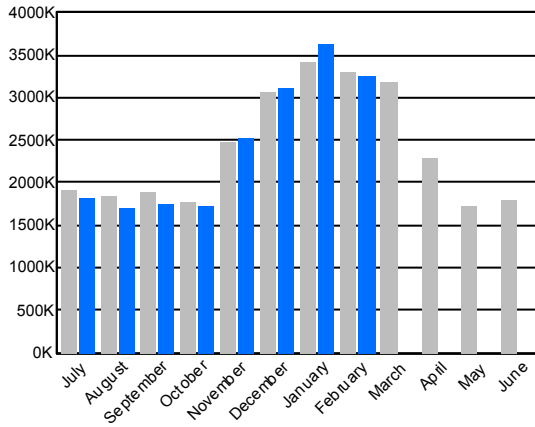
	Year To Date	July	August	September	October	November	December	January	February	March	April	May	June
<b>Energy Usage</b>													
<b>Total Energy in Millions of BTUs</b>													
FY 2018	16,209,695	1,819,593	1,709,716	1,753,030	1,715,335	2,511,582	3,105,106	3,595,334					
FY 2017	16,398,125	1,915,135	1,850,243	1,895,541	1,780,023	2,478,517	3,063,075	3,415,591	3,303,329	3,181,977	2,288,776	1,734,616	1,807,044
% Change	-1.1%	-5.0%	-7.6%	-7.5%	-3.6%	1.3%	1.4%	5.3%					
<b>Energy Usage By Energy Type</b>													
<b>Electric Demand (kw)</b>													
FY 2018	5,994,708	947,663	888,859	924,321	943,089	792,476	751,393	746,907					
FY 2017	6,072,769	963,067	933,129	991,595	884,689	782,806	762,024	755,459	748,385	739,520	745,148	925,995	969,979
% Change	-1.3%	-1.6%	-4.7%	-6.8%	6.6%	1.2%	-1.4%	-1.1%					
<b>Electric consumption (kwh)</b>													
FY 2018	2,499,686,110	380,119,176	366,098,678	368,794,358	352,333,601	351,582,939	336,049,437	344,707,921					
FY 2017	2,553,591,952	384,850,615	386,483,755	408,630,373	335,676,133	356,460,578	339,838,667	341,651,831	354,081,945	325,673,787	301,383,349	305,950,631	373,956,259
% Change	-2.1%	-1.2%	-5.3%	-9.7%	5.0%	-1.4%	-1.1%	0.9%					
<b>Natural gas (Therms)</b>													
FY 2018	64,295,270	4,014,954	3,548,912	3,908,869	4,233,196	11,086,567	17,015,370	20,487,402					
FY 2017	64,702,917	4,754,343	4,036,265	3,819,136	5,291,074	10,813,955	16,377,659	19,610,485	18,630,881	18,022,993	11,328,095	5,817,486	4,282,841
% Change	-0.6%	-15.6%	-12.1%	2.3%	-20.0%	2.5%	3.9%	4.5%					
<b>Steam (mlbs)</b>													
FY 2018	1,117,760	108,085	94,282	92,597	80,113	181,683	229,714	331,286					
FY 2017	1,085,254	112,968	114,169	106,493	94,213	161,587	237,598	258,226	207,450	240,027	113,988	97,261	91,702
% Change	3.0%	-4.3%	-17.4%	-13.0%	-15.0%	12.4%	-3.3%	28.3%					
<b>Energy Cost</b>													
<b>Total Cost</b>													
FY 2018	\$452,010,360	\$68,384,231	\$63,145,617	\$65,031,346	\$55,850,645	\$60,090,914	\$68,415,305	\$71,092,302					
FY 2017	\$420,966,730	\$61,894,592	\$60,545,479	\$66,255,332	\$50,455,434	\$52,038,405	\$60,940,117	\$68,837,372	\$72,623,275	\$66,152,135	\$56,605,174	\$55,463,045	\$67,627,030
% Change	7.4%	10.5%	4.3%	-1.8%	10.7%	15.5%	12.3%	3.3%					
<b>Energy Cost By Energy Type</b>													
<b>Electricity</b>													
FY 2018	\$371,588,259	\$63,250,720	\$58,748,267	\$60,545,654	\$50,996,713	\$46,219,136	\$48,295,932	\$43,531,836					
FY 2017	\$348,036,419	\$57,243,845	\$56,132,030	\$62,084,861	\$45,454,194	\$40,153,876	\$42,601,164	\$44,366,449	\$48,830,108	\$43,898,737	\$43,052,697	\$48,426,131	\$62,265,478
% Change	6.8%	10.5%	4.7%	-2.5%	12.2%	15.1%	13.4%	-1.9%					
<b>Natural Gas</b>													
FY 2018	\$50,655,342	\$3,358,767	\$2,878,526	\$3,037,516	\$3,559,578	\$8,070,594	\$13,300,230	\$16,450,133					
FY 2017	\$44,909,352	\$3,019,010	\$2,495,425	\$2,404,441	\$3,301,536	\$6,705,676	\$11,367,425	\$15,615,839	\$16,382,389	\$13,738,621	\$9,506,964	\$5,213,504	\$3,832,127
% Change	12.8%	11.3%	15.4%	26.3%	7.8%	20.4%	17.0%	5.3%					
<b>Steam</b>													
FY 2018	\$29,766,758	\$1,774,744	\$1,518,824	\$1,448,177	\$1,294,354	\$5,801,184	\$6,819,143	\$11,110,333					
FY 2017	\$28,020,960	\$1,631,737	\$1,918,024	\$1,766,031	\$1,699,703	\$5,178,853	\$6,971,528	\$8,855,084	\$7,410,779	\$8,514,776	\$4,045,514	\$1,823,410	\$1,529,424
% Change	6.2%	8.8%	-20.8%	-18.0%	-23.8%	12.0%	-2.2%	25.5%					



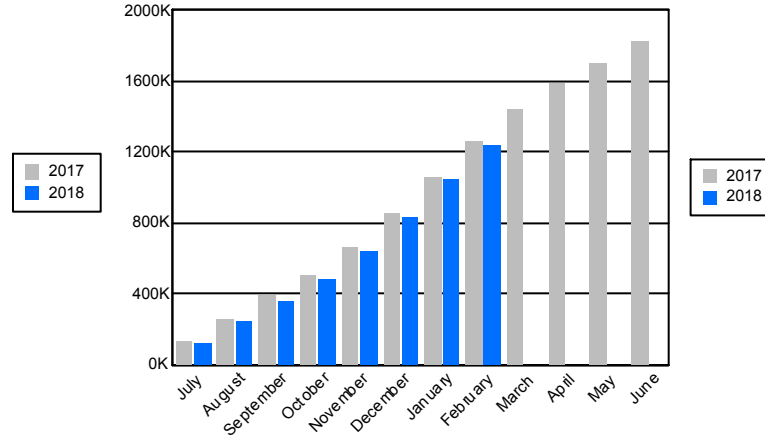
Core Report Citywide Total from Heat/Light/Power Expenditures: Energy Cost, Usage, and CO2e Emissions

February 2018

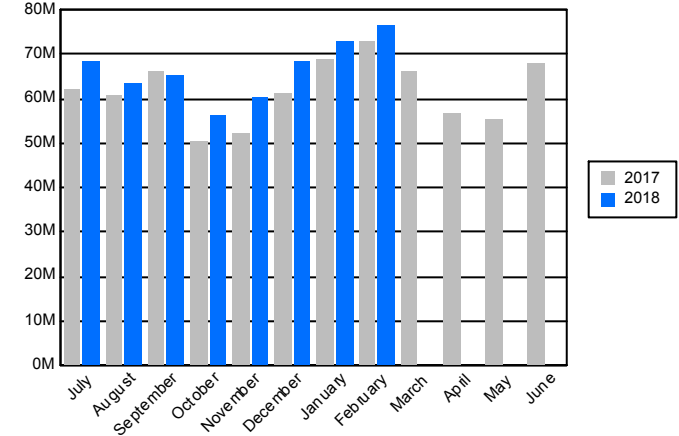
Citywide Energy Usage in Millions of BTUs



Citywide CO2e Emissions (FY Cumulative)

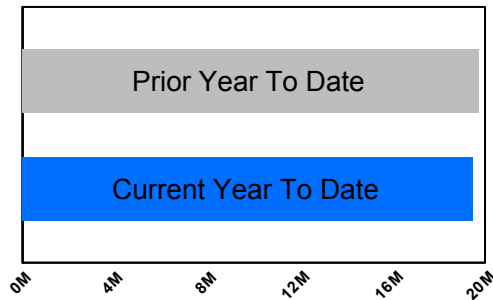


Citywide Cost

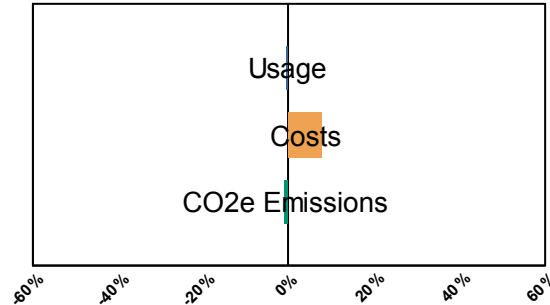


Current Year to Date compared to Prior Year to Date

Millions of BTUs



% Change



	Degree Days	
	Heating	Cooling
YTD Current FY	3,246	935
YTD Prior FY	2,982	1,135
February, 2018	638	2
February, 2017	648	0



## Core Report Citywide Total from Heat/Light/Power Expenditures: Energy Cost, Usage, and CO2e Emissions

February 2018

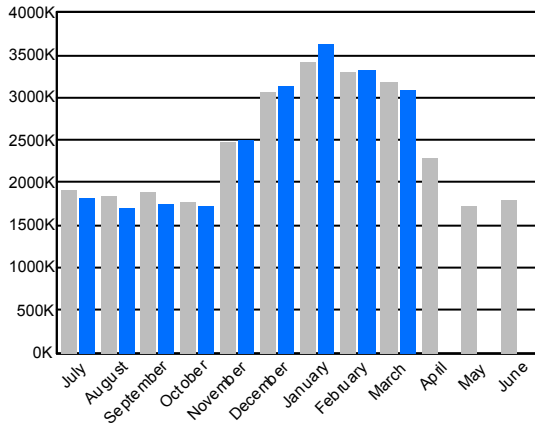
Year To Date	July	August	September	October	November	December	January	February	March	April	May	June	
<b>Energy Usage</b>													
<b>Total Energy in Millions of BTUs</b>													
FY 2018	19,521,461	1,821,551	1,712,162	1,754,594	1,720,219	2,517,398	3,110,104	3,630,771	3,254,661				
FY 2017	19,701,904	1,915,154	1,850,262	1,895,570	1,780,084	2,478,624	3,063,195	3,415,751	3,303,264	3,181,896	2,288,825	1,734,615	1,807,410
% Change	-0.9%	-4.9%	-7.5%	-7.4%	-3.4%	1.6%	1.5%	6.3%	-1.5%				
<b>Energy Usage By Energy Type</b>													
<b>Electric Demand (kw)</b>													
FY 2018	6,757,936	947,177	893,078	927,689	942,922	801,909	748,776	747,442	748,943				
FY 2017	6,818,435	962,809	932,882	991,140	884,318	782,450	761,674	755,140	748,022	747,187	746,586	926,012	976,572
% Change	-0.9%	-1.6%	-4.3%	-6.4%	6.6%	2.5%	-1.7%	-1.0%	0.1%				
<b>Electric consumption (kwh)</b>													
FY 2018	2,847,023,048	380,068,880	366,053,759	368,692,736	352,814,539	352,165,125	335,371,860	344,478,747	347,377,402				
FY 2017	2,907,682,809	384,852,215	386,485,479	408,632,477	335,686,693	356,471,544	339,847,985	341,664,909	354,041,507	325,637,599	301,388,951	305,955,811	373,884,910
% Change	-2.1%	-1.2%	-5.3%	-9.8%	5.1%	-1.2%	-1.3%	0.8%	-1.9%				
<b>Natural gas (Therms)</b>													
FY 2018	83,238,967	4,036,256	3,574,907	3,927,982	4,265,627	11,124,863	17,088,077	20,858,204	18,363,051				
FY 2017	83,337,991	4,754,480	4,036,394	3,819,351	5,291,324	10,814,645	16,378,544	19,611,637	18,631,616	18,023,415	11,328,389	5,817,302	4,288,932
% Change	-0.1%	-15.1%	-11.4%	2.8%	-19.4%	2.9%	4.3%	6.4%	-1.4%				
<b>Steam (mlbs)</b>													
FY 2018	1,325,368	108,085	94,282	92,597	80,113	181,683	229,750	330,515	208,343				
FY 2017	1,292,704	112,968	114,169	106,493	94,213	161,587	237,598	258,226	207,450	240,027	113,988	97,261	91,702
% Change	2.5%	-4.3%	-17.4%	-13.0%	-15.0%	12.4%	-3.3%	28.0%	0.4%				
<b>Energy Cost</b>													
<b>Total Cost</b>													
FY 2018	\$530,439,464	\$68,458,757	\$63,229,062	\$65,090,570	\$56,022,597	\$60,387,740	\$68,373,862	\$72,638,891	\$76,237,985				
FY 2017	\$493,513,069	\$61,888,527	\$60,539,787	\$66,243,337	\$50,445,867	\$52,027,037	\$60,929,961	\$68,828,219	\$72,610,334	\$66,160,318	\$56,642,110	\$55,498,370	\$67,686,757
% Change	7.5%	10.6%	4.4%	-1.7%	11.1%	16.1%	12.2%	5.5%	5.0%				
<b>Energy Cost By Energy Type</b>													
<b>Electricity</b>													
FY 2018	\$423,738,567	\$63,305,270	\$58,808,011	\$60,587,384	\$51,130,759	\$46,483,376	\$48,188,843	\$44,567,321	\$50,667,602				
FY 2017	\$396,784,015	\$57,237,598	\$56,126,172	\$62,072,621	\$45,444,340	\$40,141,882	\$42,590,206	\$44,356,095	\$48,815,102	\$43,905,340	\$43,088,529	\$48,461,124	\$62,318,259
% Change	6.8%	10.6%	4.8%	-2.4%	12.5%	15.8%	13.1%	0.5%	3.8%				
<b>Natural Gas</b>													
FY 2018	\$68,937,643	\$3,378,743	\$2,902,227	\$3,055,008	\$3,597,484	\$8,103,180	\$13,364,428	\$16,846,549	\$17,690,024				
FY 2017	\$61,297,315	\$3,019,192	\$2,495,591	\$2,404,686	\$3,301,824	\$6,706,302	\$11,368,227	\$15,617,040	\$16,384,453	\$13,740,202	\$9,508,068	\$5,213,836	\$3,839,074
% Change	12.5%	11.9%	16.3%	27.0%	9.0%	20.8%	17.6%	7.9%	8.0%				
<b>Steam</b>													
FY 2018	\$37,763,255	\$1,774,744	\$1,518,824	\$1,448,177	\$1,294,354	\$5,801,184	\$6,820,591	\$11,225,022	\$7,880,359				
FY 2017	\$35,431,739	\$1,631,737	\$1,918,024	\$1,766,031	\$1,699,703	\$5,178,853	\$6,971,528	\$8,855,084	\$7,410,779	\$8,514,776	\$4,045,514	\$1,823,410	\$1,529,424
% Change	6.6%	8.8%	-20.8%	-18.0%	-23.8%	12.0%	-2.2%	26.8%	6.3%				



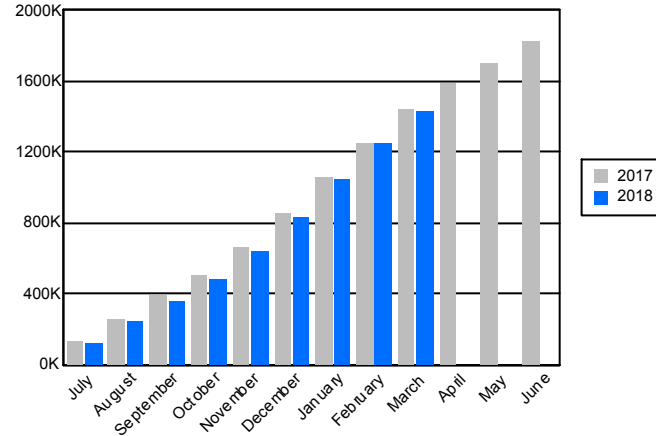
Core Report Citywide Total from Heat/Light/Power Expenditures: Energy Cost, Usage, and CO2e Emissions

March 2018

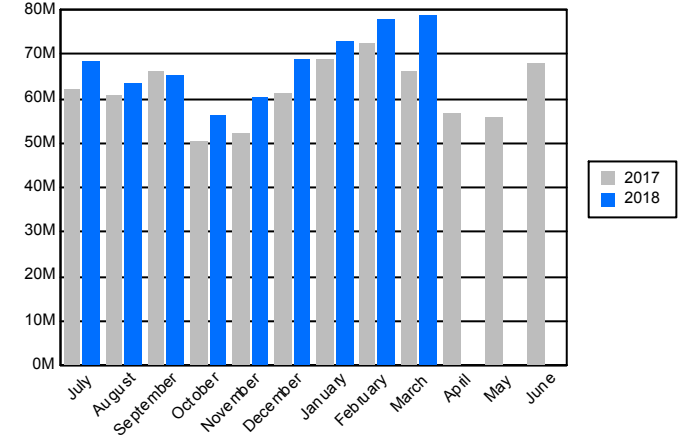
Citywide Energy Usage in Millions of BTUs



Citywide CO2e Emissions (FY Cumulative)

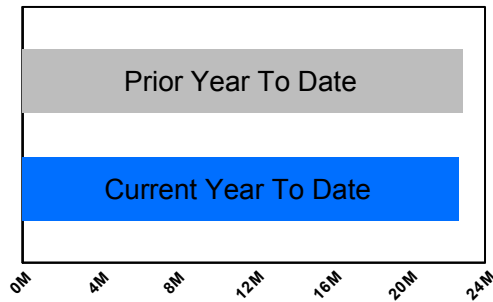


Citywide Cost

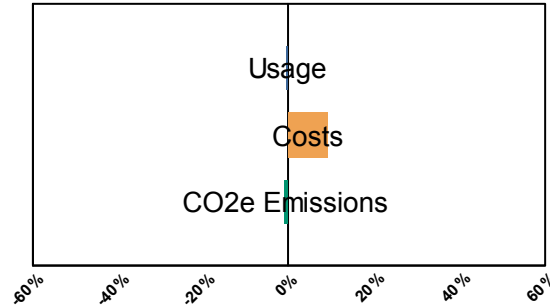


Current Year to Date compared to Prior Year to Date

Millions of BTUs



% Change



	Degree Days	
	Heating	Cooling
YTD Current FY	4,011	935
YTD Prior FY	3,775	1,135
March, 2018	765	0
March, 2017	793	0



Core Report Citywide Total from Heat/Light/Power Expenditures: Energy Cost, Usage, and CO2e Emissions

March 2018

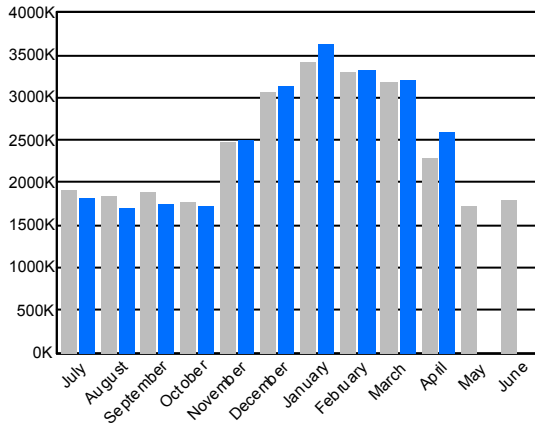
Year To Date	July	August	September	October	November	December	January	February	March	April	May	June	
<b>Energy Usage</b>													
<b>Total Energy in Millions of BTUs</b>													
FY 2018	22,702,146	1,821,787	1,711,417	1,754,183	1,720,837	2,510,612	3,129,799	3,636,274	3,324,711	3,092,526			
FY 2017	22,871,255	1,915,027	1,850,144	1,895,401	1,779,963	2,478,462	3,063,035	3,415,575	3,297,410	3,176,238	2,285,254	1,732,442	1,807,495
% Change	-0.7%	-4.9%	-7.5%	-7.5%	-3.3%	1.3%	2.2%	6.5%	0.8%	-2.6%			
<b>Energy Usage By Energy Type</b>													
<b>Electric Demand (kw)</b>													
FY 2018	7,471,616	947,606	893,500	927,834	943,224	803,081	751,550	748,637	752,677	703,507			
FY 2017	7,567,240	962,916	933,015	991,377	884,542	782,699	761,869	755,278	748,243	747,301	746,704	926,288	976,987
% Change	-1.3%	-1.6%	-4.2%	-6.4%	6.6%	2.6%	-1.4%	-0.9%	0.6%	-5.9%			
<b>Electric consumption (kwh)</b>													
FY 2018	3,158,047,541	380,048,037	366,001,797	368,503,612	352,808,406	350,640,078	337,860,154	344,430,887	349,743,404	308,011,166			
FY 2017	3,232,938,969	384,814,807	386,454,367	408,592,579	335,660,680	356,434,653	339,810,301	341,620,832	353,992,488	325,558,262	301,334,900	305,882,233	373,839,232
% Change	-2.3%	-1.2%	-5.3%	-9.8%	5.1%	-1.6%	-0.6%	0.8%	-1.2%	-5.4%			
<b>Natural gas (Therms)</b>													
FY 2018	101,802,185	4,039,330	3,569,228	3,930,325	4,272,008	11,109,049	17,177,135	20,899,885	18,954,484	17,850,741			
FY 2017	101,248,978	4,754,481	4,036,282	3,819,030	5,290,998	10,814,286	16,378,226	19,611,384	18,574,747	17,969,544	11,294,524	5,798,080	4,291,341
% Change	0.5%	-15.0%	-11.6%	2.9%	-19.3%	2.7%	4.9%	6.6%	2.0%	-0.7%			
<b>Steam (mlbs)</b>													
FY 2018	1,560,636	108,085	94,282	92,597	80,113	181,683	231,806	331,856	210,878	229,336			
FY 2017	1,532,731	112,968	114,169	106,493	94,213	161,587	237,598	258,226	207,450	240,027	113,988	97,261	91,702
% Change	1.8%	-4.3%	-17.4%	-13.0%	-15.0%	12.4%	-2.4%	28.5%	1.7%	-4.5%			
<b>Energy Cost</b>													
<b>Total Cost</b>													
FY 2018	\$611,310,930	\$68,515,126	\$63,280,397	\$65,142,890	\$56,097,623	\$60,384,955	\$68,764,333	\$72,835,116	\$77,692,648	\$78,597,841			
FY 2017	\$559,634,272	\$61,892,200	\$60,544,238	\$66,249,973	\$50,453,210	\$52,037,610	\$60,937,750	\$68,834,123	\$72,568,025	\$66,117,142	\$56,663,934	\$55,534,568	\$67,743,925
% Change	9.2%	10.7%	4.5%	-1.7%	11.2%	16.0%	12.8%	5.8%	7.1%	18.9%			
<b>Energy Cost By Energy Type</b>													
<b>Electricity</b>													
FY 2018	\$480,633,980	\$63,358,714	\$58,864,339	\$60,637,468	\$51,200,551	\$46,492,161	\$48,444,241	\$44,667,196	\$51,309,210	\$55,660,100			
FY 2017	\$440,751,832	\$57,241,273	\$56,130,736	\$62,079,530	\$45,451,971	\$40,152,749	\$42,598,301	\$44,362,235	\$48,824,201	\$43,910,837	\$43,141,358	\$48,514,637	\$62,373,153
% Change	9.0%	10.7%	4.9%	-2.3%	12.6%	15.8%	13.7%	0.7%	5.1%	26.8%			
<b>Natural Gas</b>													
FY 2018	\$85,091,924	\$3,381,668	\$2,897,235	\$3,057,246	\$3,602,719	\$8,091,610	\$13,444,156	\$16,891,078	\$18,405,257	\$15,320,955			
FY 2017	\$74,935,925	\$3,019,190	\$2,495,478	\$2,404,413	\$3,301,535	\$6,706,008	\$11,367,922	\$15,616,804	\$16,333,045	\$13,691,530	\$9,477,062	\$5,196,521	\$3,841,348
% Change	13.6%	12.0%	16.1%	27.2%	9.1%	20.7%	18.3%	8.2%	12.7%	11.9%			
<b>Steam</b>													
FY 2018	\$45,585,027	\$1,774,744	\$1,518,824	\$1,448,177	\$1,294,354	\$5,801,184	\$6,875,936	\$11,276,841	\$7,978,181	\$7,616,786			
FY 2017	\$43,946,515	\$1,631,737	\$1,918,024	\$1,766,031	\$1,699,703	\$5,178,853	\$6,971,528	\$8,855,084	\$7,410,779	\$8,514,776	\$4,045,514	\$1,823,410	\$1,529,424
% Change	3.7%	8.8%	-20.8%	-18.0%	-23.8%	12.0%	-1.4%	27.3%	7.7%	-10.5%			



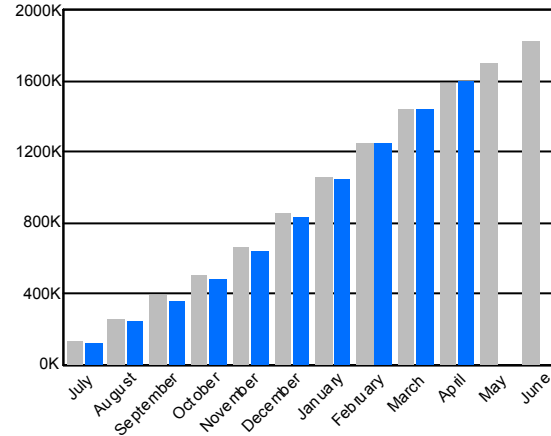
Core Report Citywide Total from Heat/Light/Power Expenditures: Energy Cost, Usage, and CO2e Emissions

April 2018

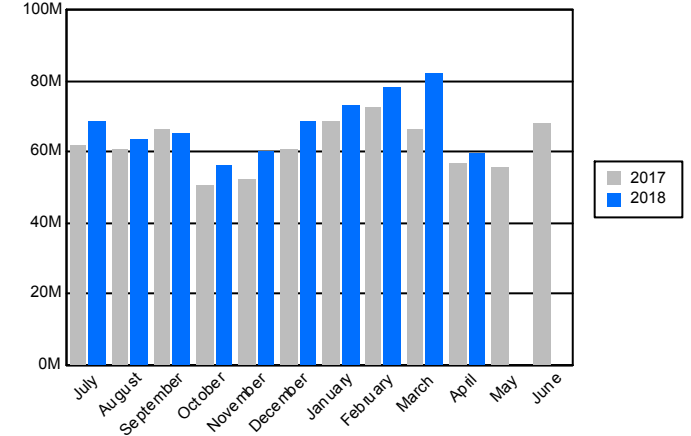
Citywide Energy Usage in Millions of BTUs



Citywide CO2e Emissions (FY Cumulative)

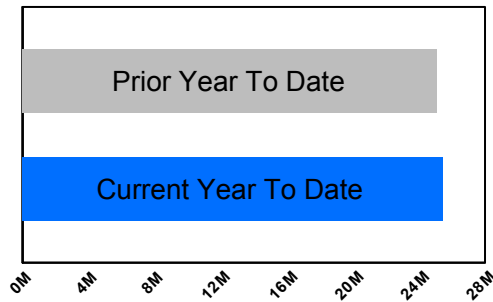


Citywide Cost

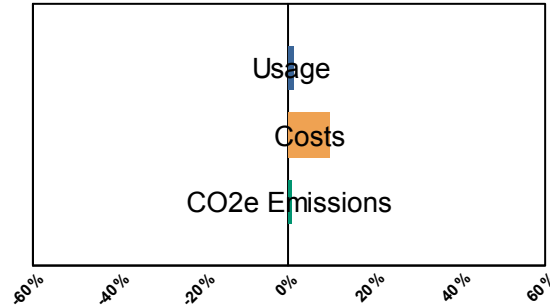


Current Year to Date compared to Prior Year to Date

Millions of BTUs



% Change



	Degree Days	
	Heating	Cooling
YTD Current FY	4,477	941
YTD Prior FY	4,035	1,169
April, 2018	466	6
April, 2017	260	34



## Core Report Citywide Total from Heat/Light/Power Expenditures: Energy Cost, Usage, and CO2e Emissions

April 2018

Year To Date	July	August	September	October	November	December	January	February	March	April	May	June
<b>Energy Usage</b>												
<b>Total Energy in Millions of BTUs</b>												
FY 2018	25,430,755	1,819,762	1,712,224	1,753,788	1,719,855	2,509,116	3,128,746	3,637,993	3,329,617	3,213,979	2,605,676	
FY 2017	25,156,065	1,915,008	1,850,121	1,895,379	1,779,980	2,478,478	3,063,121	3,415,488	3,297,397	3,175,993	2,285,100	1,732,262 1,807,246
% Change	1.1%	-5.0%	-7.5%	-7.5%	-3.4%	1.2%	2.1%	6.5%	1.0%	1.2%	14.0%	
<b>Energy Usage By Energy Type</b>												
<b>Electric Demand (kw)</b>												
FY 2018	8,249,378	947,761	893,979	928,400	943,927	803,494	751,791	750,163	755,148	739,817	734,898	
FY 2017	8,316,919	963,073	933,139	991,579	885,167	782,853	762,064	755,456	748,734	747,791	747,063	926,622 977,354
% Change	-0.8%	-1.6%	-4.2%	-6.4%	6.6%	2.6%	-1.3%	-0.7%	0.9%	-1.1%	-1.6%	
<b>Electric consumption (kwh)</b>												
FY 2018	3,476,906,923	379,504,000	366,287,879	368,426,764	352,837,326	350,576,477	337,867,664	345,093,329	350,457,686	324,795,995	301,059,803	
FY 2017	3,534,216,169	384,809,208	386,447,610	408,586,111	335,655,088	356,427,504	339,805,451	341,614,694	353,985,382	325,554,454	301,330,667	305,851,196 373,822,043
% Change	-1.6%	-1.4%	-5.2%	-9.8%	5.1%	-1.6%	-0.6%	1.0%	-1.0%	-0.2%	-0.1%	
<b>Natural gas (Therms)</b>												
FY 2018	116,333,544	4,037,643	3,567,537	3,928,996	4,261,202	11,096,263	17,166,346	20,883,439	18,969,117	18,471,111	13,951,890	
FY 2017	112,541,041	4,754,481	4,036,282	3,819,030	5,291,362	10,814,696	16,379,253	19,610,723	18,574,864	17,967,219	11,293,131	5,797,341 4,289,440
% Change	3.4%	-15.1%	-11.6%	2.9%	-19.5%	2.6%	4.8%	6.5%	2.1%	2.8%	23.5%	
<b>Steam (mlbs)</b>												
FY 2018	1,728,206	108,085	94,282	92,597	80,113	181,683	231,806	332,843	211,777	231,242	163,778	
FY 2017	1,646,719	112,968	114,169	106,493	94,213	161,587	237,598	258,226	207,450	240,027	113,988	97,261 91,702
% Change	4.9%	-4.3%	-17.4%	-13.0%	-15.0%	12.4%	-2.4%	28.9%	2.1%	-3.7%	43.7%	
<b>Energy Cost</b>												
<b>Total Cost</b>												
FY 2018	\$674,838,924	\$68,505,904	\$63,318,081	\$65,179,918	\$56,127,350	\$60,393,791	\$68,767,936	\$72,932,484	\$77,944,761	\$82,261,682	\$59,407,018	
FY 2017	\$616,375,387	\$61,896,018	\$60,546,675	\$66,254,924	\$50,469,955	\$52,042,385	\$60,943,900	\$68,838,284	\$72,582,633	\$66,128,433	\$56,672,179	\$55,542,403 \$67,753,652
% Change	9.5%	10.7%	4.6%	-1.6%	11.2%	16.0%	12.8%	5.9%	7.4%	24.4%	4.8%	
<b>Energy Cost By Energy Type</b>												
<b>Electricity</b>												
FY 2018	\$525,173,023	\$63,351,318	\$58,903,841	\$60,675,889	\$51,236,933	\$46,508,165	\$48,454,688	\$44,749,939	\$51,519,170	\$58,691,292	\$41,081,788	
FY 2017	\$483,973,311	\$57,245,123	\$56,133,204	\$62,084,516	\$45,468,443	\$40,157,235	\$42,603,656	\$44,367,082	\$48,838,710	\$43,924,383	\$43,150,961	\$48,523,176 \$62,385,035
% Change	8.5%	10.7%	4.9%	-2.3%	12.7%	15.8%	13.7%	0.9%	5.5%	33.6%	-4.8%	
<b>Natural Gas</b>												
FY 2018	\$98,374,159	\$3,379,842	\$2,895,416	\$3,055,853	\$3,596,063	\$8,084,443	\$13,437,312	\$16,884,857	\$18,428,143	\$15,891,824	\$12,720,407	
FY 2017	\$84,410,047	\$3,019,158	\$2,495,447	\$2,404,378	\$3,301,809	\$6,706,298	\$11,368,716	\$15,616,118	\$16,333,145	\$13,689,274	\$9,475,705	\$5,195,817 \$3,839,192
% Change	16.5%	11.9%	16.0%	27.1%	8.9%	20.6%	18.2%	8.1%	12.8%	16.1%	34.2%	
<b>Steam</b>												
FY 2018	\$51,291,743	\$1,774,744	\$1,518,824	\$1,448,177	\$1,294,354	\$5,801,184	\$6,875,936	\$11,297,688	\$7,997,447	\$7,678,566	\$5,604,823	
FY 2017	\$47,992,028	\$1,631,737	\$1,918,024	\$1,766,031	\$1,699,703	\$5,178,853	\$6,971,528	\$8,855,084	\$7,410,779	\$8,514,776	\$4,045,514	\$1,823,410 \$1,529,424
% Change	6.9%	8.8%	-20.8%	-18.0%	-23.8%	12.0%	-1.4%	27.6%	7.9%	-9.8%	38.5%	

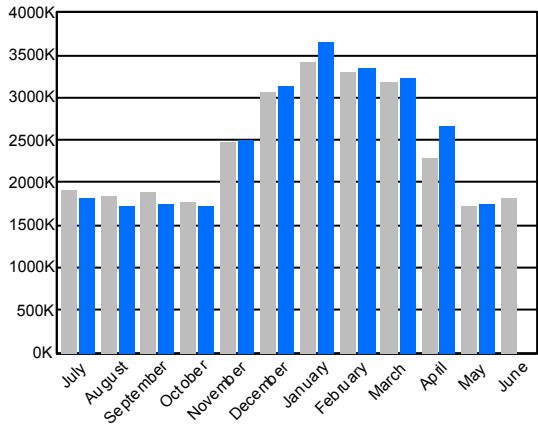




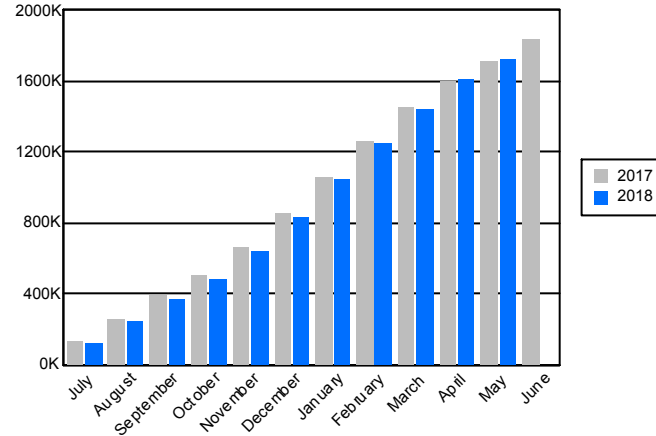
Core Report Citywide Total from Heat/Light/Power Expenditures: Energy Cost, Usage, and CO2e Emissions

May 2018

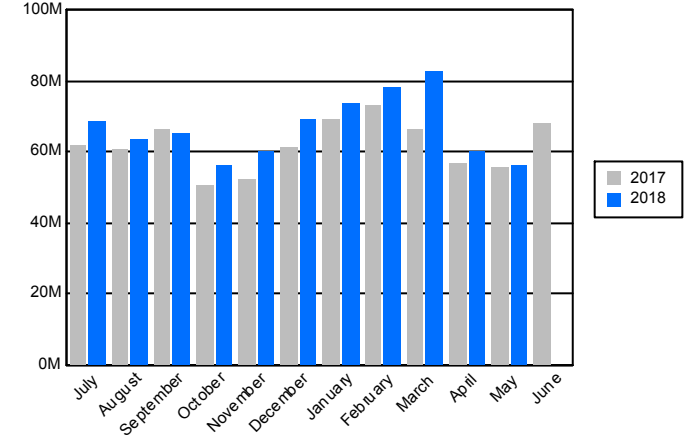
Citywide Energy Usage in Millions of BTUs



Citywide CO2e Emissions (FY Cumulative)

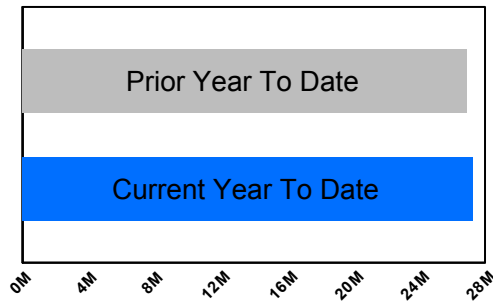


Citywide Cost

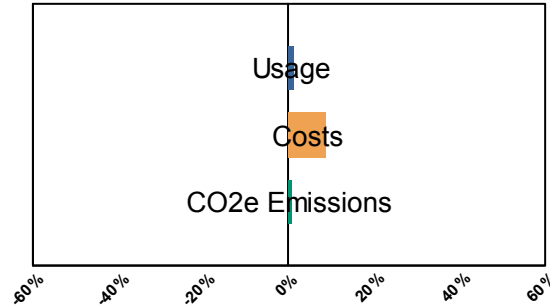


Current Year to Date compared to Prior Year to Date

Millions of BTUs



% Change



	Degree Days	
	Heating	Cooling
YTD Current FY	4,537	1,069
YTD Prior FY	4,200	1,224
May, 2018	60	128
May, 2017	165	55



Core Report Citywide Total from Heat/Light/Power Expenditures: Energy Cost, Usage, and CO2e Emissions

May 2018

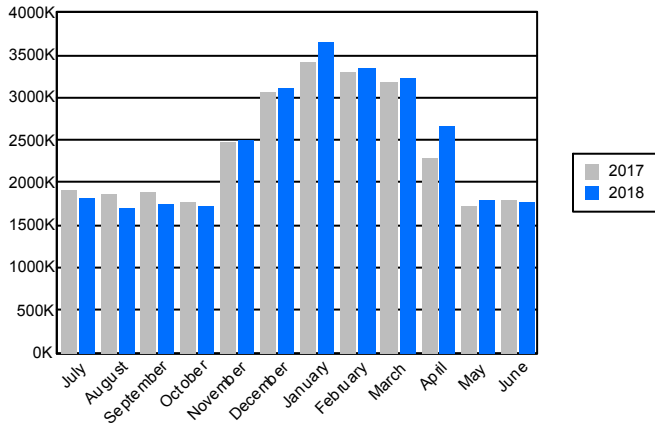
Year To Date	July	August	September	October	November	December	January	February	March	April	May	June	
<b>Energy Usage</b>													
<b>Total Energy in Millions of BTUs</b>													
FY 2018	27,322,391	1,825,759	1,718,493	1,760,670	1,727,818	2,512,061	3,129,956	3,648,616	3,340,171	3,241,111	2,656,954	1,760,782	
FY 2017	26,963,056	1,920,156	1,855,639	1,901,408	1,786,938	2,486,061	3,071,133	3,423,576	3,304,796	3,183,483	2,291,634	1,738,232	1,813,020
% Change	1.3%	-4.9%	-7.4%	-7.4%	-3.3%	1.0%	1.9%	6.6%	1.1%	1.8%	15.9%	1.3%	
<b>Energy Usage By Energy Type</b>													
<b>Electric Demand (kw)</b>													
FY 2018	9,139,766	952,855	899,156	933,391	949,086	803,610	751,769	750,508	755,049	740,651	737,572	866,119	
FY 2017	9,298,925	968,068	938,097	996,560	890,113	787,860	767,094	760,521	753,808	752,881	752,136	931,787	982,412
% Change	-1.7%	-1.6%	-4.2%	-6.3%	6.6%	2.0%	-2.0%	-1.3%	0.2%	-1.6%	-1.9%	-7.0%	
<b>Electric consumption (kwh)</b>													
FY 2018	3,807,089,121	380,940,757	367,826,361	370,199,931	354,884,277	350,579,210	337,424,559	346,840,985	351,706,098	326,206,630	303,739,852	316,740,461	
FY 2017	3,859,701,071	386,196,782	387,950,650	410,236,383	337,567,588	358,485,852	341,995,088	343,816,687	355,800,641	327,374,401	302,942,159	307,334,840	375,163,292
% Change	-1.4%	-1.4%	-5.2%	-9.8%	5.1%	-2.2%	-1.3%	0.9%	-1.2%	-0.4%	0.3%	3.1%	
<b>Natural gas (Therms)</b>													
FY 2018	123,038,592	4,048,574	3,577,715	3,937,301	4,270,975	11,125,616	17,193,566	20,930,019	19,032,054	18,694,292	14,372,311	5,856,169	
FY 2017	118,415,567	4,758,604	4,040,163	3,822,993	5,295,670	10,820,267	16,384,642	19,616,449	18,586,898	17,980,006	11,303,472	5,806,403	4,301,404
% Change	3.9%	-14.9%	-11.4%	3.0%	-19.3%	2.8%	4.9%	6.7%	2.4%	4.0%	27.1%	0.9%	
<b>Steam (mlbs)</b>													
FY 2018	1,812,543	108,085	94,282	92,597	80,113	181,683	231,806	332,843	211,777	231,242	163,858	84,257	
FY 2017	1,743,980	112,968	114,169	106,493	94,213	161,587	237,598	258,226	207,450	240,027	113,988	97,261	91,702
% Change	3.9%	-4.3%	-17.4%	-13.0%	-15.0%	12.4%	-2.4%	28.9%	2.1%	-3.7%	43.8%	-13.4%	
<b>Energy Cost</b>													
<b>Total Cost</b>													
FY 2018	\$733,751,001	\$68,699,380	\$63,495,307	\$65,352,276	\$56,321,582	\$60,407,010	\$68,858,265	\$73,392,141	\$78,331,811	\$82,588,757	\$60,224,340	\$56,080,130	
FY 2017	\$674,196,786	\$62,074,190	\$60,721,910	\$66,441,253	\$50,667,516	\$52,224,026	\$61,155,432	\$69,053,529	\$72,814,120	\$66,349,780	\$56,913,776	\$55,781,253	\$67,967,568
% Change	8.8%	10.7%	4.6%	-1.6%	11.2%	15.7%	12.6%	6.3%	7.6%	24.5%	5.8%	0.5%	
<b>Energy Cost By Energy Type</b>													
<b>Electricity</b>													
FY 2018	\$575,725,115	\$63,563,639	\$59,098,660	\$60,869,517	\$51,444,009	\$46,512,959	\$48,534,841	\$45,186,665	\$51,861,820	\$58,825,944	\$41,504,882	\$48,322,178	
FY 2017	\$534,701,749	\$57,418,128	\$56,305,172	\$62,267,555	\$45,662,349	\$40,334,187	\$42,810,600	\$44,576,865	\$49,058,307	\$44,133,703	\$43,382,480	\$48,752,404	\$62,586,458
% Change	7.7%	10.7%	5.0%	-2.2%	12.7%	15.3%	13.4%	1.4%	5.7%	33.3%	-4.3%	-0.9%	
<b>Natural Gas</b>													
FY 2018	\$105,055,068	\$3,360,997	\$2,877,823	\$3,034,583	\$3,583,220	\$8,092,867	\$13,447,488	\$16,907,788	\$18,472,543	\$16,084,247	\$13,111,430	\$6,082,082	
FY 2017	\$89,679,598	\$3,024,325	\$2,498,713	\$2,407,668	\$3,305,464	\$6,710,986	\$11,373,304	\$15,621,580	\$16,345,034	\$13,701,301	\$9,485,783	\$5,205,440	\$3,851,685
% Change	17.1%	11.1%	15.2%	26.0%	8.4%	20.6%	18.2%	8.2%	13.0%	17.4%	38.2%	16.8%	
<b>Steam</b>													
FY 2018	\$52,970,819	\$1,774,744	\$1,518,824	\$1,448,177	\$1,294,354	\$5,801,184	\$6,875,936	\$11,297,688	\$7,997,447	\$7,678,566	\$5,608,028	\$1,675,871	
FY 2017	\$49,815,439	\$1,631,737	\$1,918,024	\$1,766,031	\$1,699,703	\$5,178,853	\$6,971,528	\$8,855,084	\$7,410,779	\$8,514,776	\$4,045,514	\$1,823,410	\$1,529,424
% Change	6.3%	8.8%	-20.8%	-18.0%	-23.8%	12.0%	-1.4%	27.6%	7.9%	-9.8%	38.6%	-8.1%	



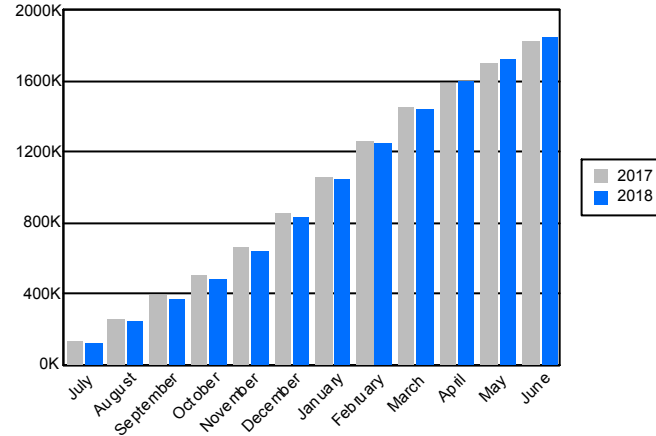
Core Report Citywide Total from Heat/Light/Power Expenditures: Energy Cost, Usage, and CO2e Emissions

June 2018

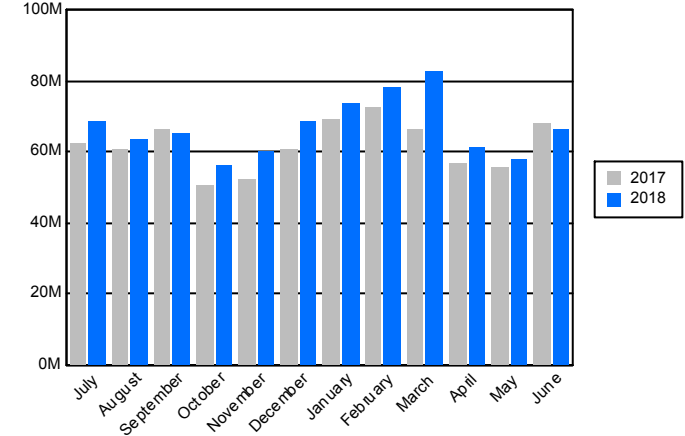
Citywide Energy Usage in Millions of BTUs



Citywide CO2e Emissions (FY Cumulative)

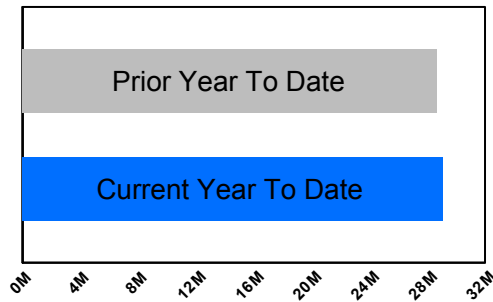


Citywide Cost

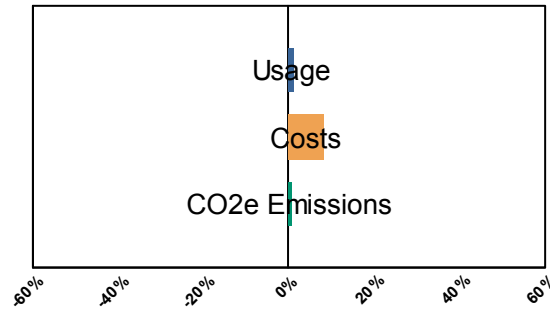


Current Year to Date compared to Prior Year to Date

Millions of BTUs



% Change



	Degree Days	
	Heating	Cooling
YTD Current FY	4,548	1,289
YTD Prior FY	4,224	1,466
June, 2018	11	220
June, 2017	24	242



## Core Report Citywide Total from Heat/Light/Power Expenditures: Energy Cost, Usage, and CO2e Emissions

June 2018

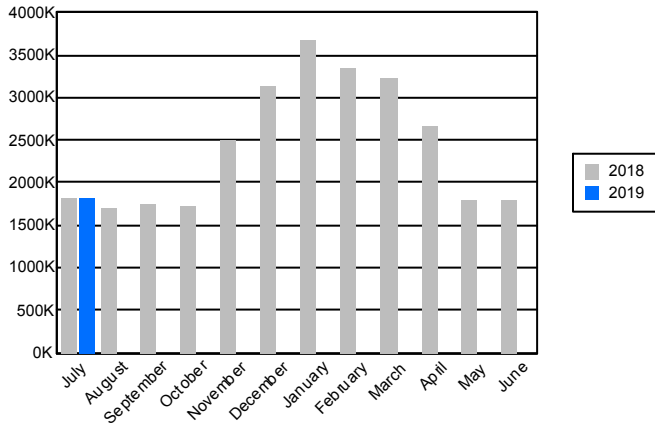
Year To Date	July	August	September	October	November	December	January	February	March	April	May	June	
<b>Energy Usage</b>													
<b>Total Energy in Millions of BTUs</b>													
FY 2018	29,110,674	1,821,265	1,714,867	1,757,348	1,723,914	2,508,762	3,124,652	3,644,120	3,337,704	3,219,554	2,670,356	1,804,674	1,783,457
FY 2017	28,718,363	1,922,502	1,858,698	1,893,734	1,778,558	2,478,172	3,063,154	3,416,291	3,298,503	3,178,074	2,287,136	1,734,241	1,809,300
% Change	1.4%	-5.3%	-7.7%	-7.2%	-3.1%	1.2%	2.0%	6.7%	1.2%	1.3%	16.8%	4.1%	-1.4%
<b>Energy Usage By Energy Type</b>													
<b>Electric Demand (kw)</b>													
FY 2018	10,094,272	949,307	896,199	930,392	946,067	800,711	748,189	747,616	751,864	739,787	749,675	880,535	953,930
FY 2017	10,235,450	970,704	941,095	989,711	883,650	781,906	761,601	755,408	749,120	748,411	747,940	927,585	978,319
% Change	-1.4%	-2.2%	-4.8%	-6.0%	7.1%	2.4%	-1.8%	-1.0%	0.4%	-1.2%	0.2%	-5.1%	-2.5%
<b>Electric consumption (kwh)</b>													
FY 2018	4,160,871,246	379,618,585	366,738,646	369,223,157	353,687,345	349,250,179	335,849,179	345,354,663	349,934,422	319,716,941	302,465,860	319,553,676	369,478,593
FY 2017	4,217,858,220	386,880,047	388,842,832	407,983,464	335,129,526	356,124,070	339,638,493	341,667,328	353,940,214	325,782,871	301,634,330	306,162,949	374,072,096
% Change	-1.4%	-1.9%	-5.7%	-9.5%	5.5%	-1.9%	-1.1%	1.1%	-1.1%	-1.9%	0.3%	4.4%	-1.2%
<b>Natural gas (Therms)</b>													
FY 2018	127,888,594	4,048,759	3,578,580	3,937,420	4,272,782	11,137,989	17,194,295	20,913,764	19,033,365	18,700,135	14,550,529	6,205,818	4,315,158
FY 2017	122,720,255	4,758,746	4,040,299	3,823,144	5,295,082	10,821,992	16,385,277	19,616,955	18,587,465	17,980,233	11,303,130	5,806,489	4,301,443
% Change	4.2%	-14.9%	-11.4%	3.0%	-19.3%	2.9%	4.9%	6.6%	2.4%	4.0%	28.7%	6.9%	0.3%
<b>Steam (mlbs)</b>													
FY 2018	1,898,316	108,085	94,282	92,597	80,113	181,683	231,806	334,815	214,864	231,249	163,794	83,653	81,375
FY 2017	1,835,682	112,968	114,169	106,493	94,213	161,587	237,598	258,226	207,450	240,027	113,988	97,261	91,702
% Change	3.4%	-4.3%	-17.4%	-13.0%	-15.0%	12.4%	-2.4%	29.7%	3.6%	-3.7%	43.7%	-14.0%	-11.3%
<b>Energy Cost</b>													
<b>Total Cost</b>													
FY 2018	\$801,782,530	\$68,553,912	\$63,391,117	\$65,271,122	\$56,232,141	\$60,329,344	\$68,710,708	\$73,357,672	\$78,214,672	\$82,347,926	\$61,014,306	\$57,877,355	\$66,482,255
FY 2017	\$740,351,192	\$62,163,477	\$60,825,354	\$66,191,077	\$50,416,930	\$52,017,544	\$60,931,965	\$68,847,348	\$72,602,587	\$66,166,253	\$56,745,481	\$55,618,393	\$67,824,785
% Change	8.3%	10.3%	4.2%	-1.4%	11.5%	16.0%	12.8%	6.6%	7.7%	24.5%	7.5%	4.1%	-2.0%
<b>Energy Cost By Energy Type</b>													
<b>Electricity</b>													
FY 2018	\$637,611,157	\$63,417,933	\$58,993,543	\$60,788,265	\$51,353,086	\$46,424,908	\$48,386,760	\$45,138,207	\$51,733,091	\$58,562,312	\$42,147,361	\$49,827,233	\$60,838,458
FY 2017	\$595,471,490	\$57,507,225	\$56,408,440	\$62,017,185	\$45,412,157	\$40,126,535	\$42,586,543	\$44,370,081	\$48,846,011	\$43,949,860	\$43,214,466	\$48,589,402	\$62,443,583
% Change	7.1%	10.3%	4.6%	-2.0%	13.1%	15.7%	13.6%	1.7%	5.9%	33.2%	-2.5%	2.5%	-2.6%
<b>Natural Gas</b>													
FY 2018	\$109,854,466	\$3,361,234	\$2,878,750	\$3,034,681	\$3,584,701	\$8,103,252	\$13,448,012	\$16,902,782	\$18,484,577	\$16,101,453	\$13,261,758	\$6,384,248	\$4,309,017
FY 2017	\$93,534,839	\$3,024,515	\$2,498,890	\$2,407,861	\$3,305,069	\$6,712,156	\$11,373,894	\$15,622,183	\$16,345,797	\$13,701,616	\$9,485,502	\$5,205,580	\$3,851,777
% Change	17.4%	11.1%	15.2%	26.0%	8.5%	20.7%	18.2%	8.2%	13.1%	17.5%	39.8%	22.6%	11.9%
<b>Steam</b>													
FY 2018	\$54,316,907	\$1,774,744	\$1,518,824	\$1,448,177	\$1,294,354	\$5,801,184	\$6,875,936	\$11,316,684	\$7,997,003	\$7,684,160	\$5,605,186	\$1,665,874	\$1,334,780
FY 2017	\$51,344,863	\$1,631,737	\$1,918,024	\$1,766,031	\$1,699,703	\$5,178,853	\$6,971,528	\$8,855,084	\$7,410,779	\$8,514,776	\$4,045,514	\$1,823,410	\$1,529,424
% Change	5.8%	8.8%	-20.8%	-18.0%	-23.8%	12.0%	-1.4%	27.8%	7.9%	-9.8%	38.6%	-8.6%	-12.7%



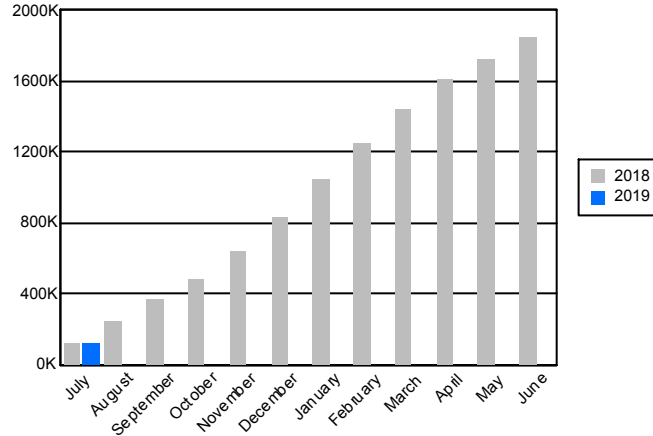
Core Report Citywide Total from Heat/Light/Power Expenditures: Energy Cost, Usage, and CO2e Emissions

July 2018

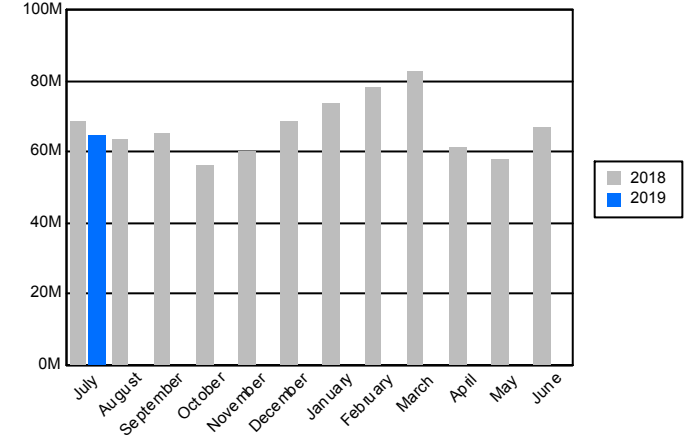
Citywide Energy Usage in Millions of BTUs



Citywide CO2e Emissions (FY Cumulative)

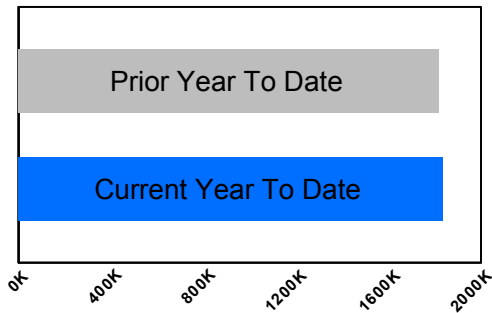


Citywide Cost

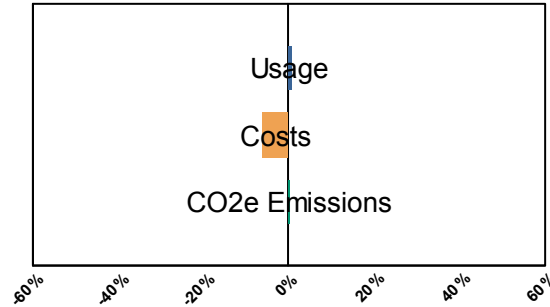


Current Year to Date compared to Prior Year to Date

Millions of BTUs



% Change



	Degree Days	
	Heating	Cooling
YTD Current FY	0	399
YTD Prior FY	0	372
July, 2018	0	399
July, 2017	0	372



Core Report Citywide Total from Heat/Light/Power Expenditures: Energy Cost, Usage, and CO2e Emissions

July 2018

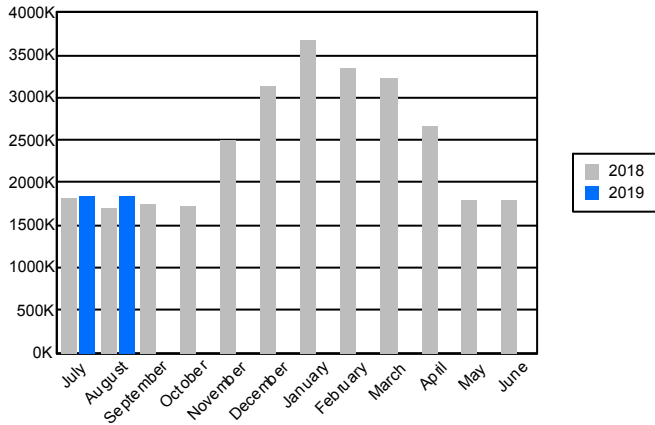
Year To Date	July	August	September	October	November	December	January	February	March	April	May	June	
<b>Energy Usage</b>													
<b>Total Energy in Millions of BTUs</b>													
FY 2019	1,832,697	1,832,697											
FY 2018	1,821,278	1,821,278	1,714,747	1,757,204	1,723,185	2,509,587	3,125,845	3,681,528	3,339,348	3,221,058	2,670,216	1,804,663	1,806,300
% Change	0.6%	0.6%											
<b>Energy Usage By Energy Type</b>													
<b>Electric Demand (kw)</b>													
FY 2019	946,552	946,552											
FY 2018	949,392	949,392	896,041	929,788	945,292	800,222	747,750	747,161	751,290	739,631	749,087	886,419	952,613
% Change	-0.3%	-0.3%											
<b>Electric consumption (kwh)</b>													
FY 2019	372,552,121	372,552,121											
FY 2018	379,622,554	379,622,554	366,713,795	369,177,835	353,375,246	349,218,209	335,905,160	345,428,158	350,150,964	320,069,218	302,823,222	319,927,860	370,874,991
% Change	-1.9%	-1.9%											
<b>Natural gas (Therms)</b>													
FY 2019	4,459,517	4,459,517											
FY 2018	4,048,758	4,048,758	3,578,225	3,937,528	4,276,143	11,147,329	17,204,317	20,926,513	19,042,410	18,703,146	14,536,929	6,193,381	4,495,720
% Change	10.1%	10.1%											
<b>Steam (mlbs)</b>													
FY 2019	103,139	103,139											
FY 2018	108,085	108,085	94,282	92,597	80,113	181,683	231,806	366,933	214,864	231,249	163,794	83,613	81,394
% Change	-4.6%	-4.6%											
<b>Energy Cost</b>													
<b>Total Cost</b>													
FY 2019	\$64,385,015	\$64,385,015											
FY 2018	\$68,556,564	\$68,556,564	\$63,384,465	\$65,336,787	\$56,198,456	\$60,320,015	\$68,792,598	\$73,343,369	\$78,215,220	\$82,465,714	\$60,996,961	\$57,856,766	\$66,943,352
% Change	-6.1%	-6.1%											
<b>Energy Cost By Energy Type</b>													
<b>Electricity</b>													
FY 2019	\$58,752,322	\$58,752,322											
FY 2018	\$63,420,725	\$63,420,725	\$58,987,435	\$60,765,796	\$51,317,735	\$46,409,194	\$48,372,804	\$45,125,736	\$51,726,157	\$58,590,020	\$42,143,465	\$49,821,648	\$61,176,173
% Change	-7.4%	-7.4%											
<b>Natural Gas</b>													
FY 2019	\$4,007,525	\$4,007,525											
FY 2018	\$3,361,095	\$3,361,095	\$2,878,206	\$3,122,815	\$3,586,367	\$8,109,638	\$13,543,857	\$16,911,016	\$18,492,060	\$16,191,534	\$13,248,310	\$6,370,905	\$4,431,742
% Change	19.2%	19.2%											
<b>Steam</b>													
FY 2019	\$1,625,168	\$1,625,168											
FY 2018	\$1,774,744	\$1,774,744	\$1,518,824	\$1,448,177	\$1,294,354	\$5,801,184	\$6,875,936	\$11,306,617	\$7,997,003	\$7,684,160	\$5,605,186	\$1,664,214	\$1,335,436
% Change	-8.4%	-8.4%											



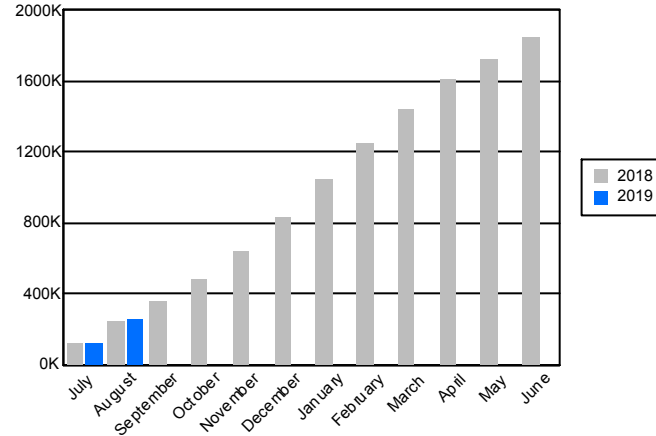
Core Report Citywide Total from Heat/Light/Power Expenditures: Energy Cost, Usage, and CO2e Emissions

August 2018

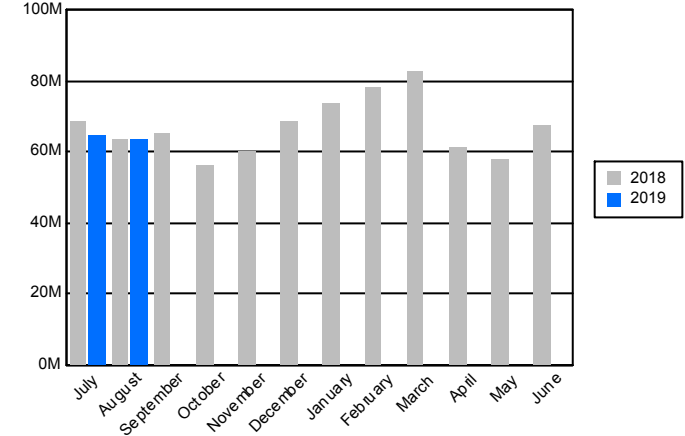
Citywide Energy Usage in Millions of BTUs



Citywide CO2e Emissions (FY Cumulative)

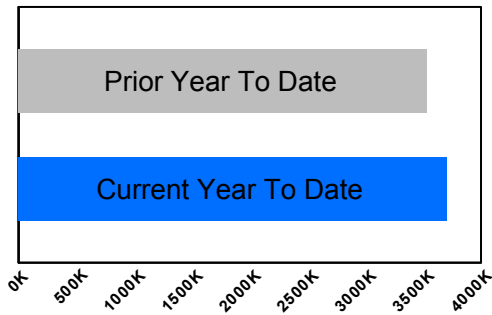


Citywide Cost

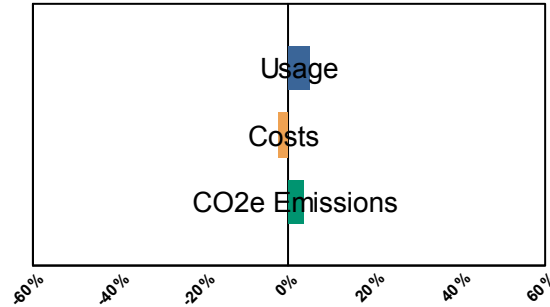


Current Year to Date compared to Prior Year to Date

Millions of BTUs



% Change



	Degree Days	
	Heating	Cooling
YTD Current FY	0	812
YTD Prior FY	0	663
August, 2018	0	413
August, 2017	0	291



Core Report Citywide Total from Heat/Light/Power Expenditures: Energy Cost, Usage, and CO2e Emissions

August 2018

Year To Date	July	August	September	October	November	December	January	February	March	April	May	June	
<b>Energy Usage</b>													
<b>Total Energy in Millions of BTUs</b>													
FY 2019	3,701,623	1,852,869	1,848,754										
FY 2018	3,535,205	1,820,656	1,714,549	1,756,938	1,723,611	2,510,898	3,126,431	3,685,039	3,341,608	3,223,689	2,671,650	1,803,403	1,805,159
% Change	4.7%	1.8%	7.8%										
<b>Energy Usage By Energy Type</b>													
<b>Electric Demand (kw)</b>													
FY 2019	1,851,188	942,290	908,898										
FY 2018	1,845,517	949,588	895,929	929,918	945,740	800,557	748,176	748,542	751,502	739,798	750,606	884,946	951,877
% Change	0.3%	-0.8%	1.4%										
<b>Electric consumption (kwh)</b>													
FY 2019	742,572,497	372,462,094	370,110,403										
FY 2018	746,396,439	379,642,143	366,754,296	369,226,235	353,574,935	349,101,899	335,623,963	345,292,721	350,312,643	319,946,008	302,993,268	319,668,410	370,972,439
% Change	-0.5%	-1.9%	0.9%										
<b>Natural gas (Therms)</b>													
FY 2019	9,410,754	4,664,231	4,746,523										
FY 2018	7,616,734	4,041,870	3,574,864	3,933,216	4,273,593	11,164,402	17,219,776	20,966,246	19,059,496	18,733,670	14,545,463	6,189,641	4,480,892
% Change	23.6%	15.4%	32.8%										
<b>Steam (mlbs)</b>													
FY 2019	202,427	103,146	99,281										
FY 2018	202,367	108,085	94,282	92,597	80,113	181,683	231,806	366,933	214,864	231,249	163,794	83,613	81,402
% Change	0.0%	-4.6%	5.3%										
<b>Energy Cost</b>													
<b>Total Cost</b>													
FY 2019	\$128,402,605	\$64,840,252	\$63,562,353										
FY 2018	\$131,942,427	\$68,559,253	\$63,383,174	\$65,341,700	\$56,218,616	\$60,343,862	\$68,810,327	\$73,414,808	\$78,254,830	\$82,490,373	\$61,064,682	\$57,835,246	\$67,191,422
% Change	-2.7%	-5.4%	0.3%										
<b>Energy Cost By Energy Type</b>													
<b>Electricity</b>													
FY 2019	\$116,906,409	\$59,067,287	\$57,839,122										
FY 2018	\$122,418,263	\$63,429,502	\$58,988,761	\$60,773,961	\$51,340,075	\$46,418,801	\$48,377,849	\$45,168,361	\$51,747,370	\$58,589,112	\$42,204,895	\$49,808,650	\$61,444,972
% Change	-4.5%	-6.9%	-1.9%										
<b>Natural Gas</b>													
FY 2019	\$8,272,165	\$4,147,146	\$4,125,019										
FY 2018	\$6,230,596	\$3,355,006	\$2,875,590	\$3,119,562	\$3,584,186	\$8,123,877	\$13,556,541	\$16,939,831	\$18,510,456	\$16,217,101	\$13,254,601	\$6,362,382	\$4,410,316
% Change	32.8%	23.6%	43.4%										
<b>Steam</b>													
FY 2019	\$3,224,031	\$1,625,819	\$1,598,212										
FY 2018	\$3,293,568	\$1,774,744	\$1,518,824	\$1,448,177	\$1,294,354	\$5,801,184	\$6,875,936	\$11,306,617	\$7,997,003	\$7,684,160	\$5,605,186	\$1,664,214	\$1,336,134
% Change	-2.1%	-8.4%	5.2%										

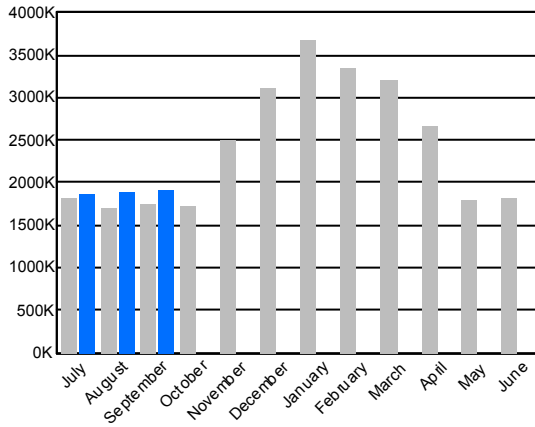




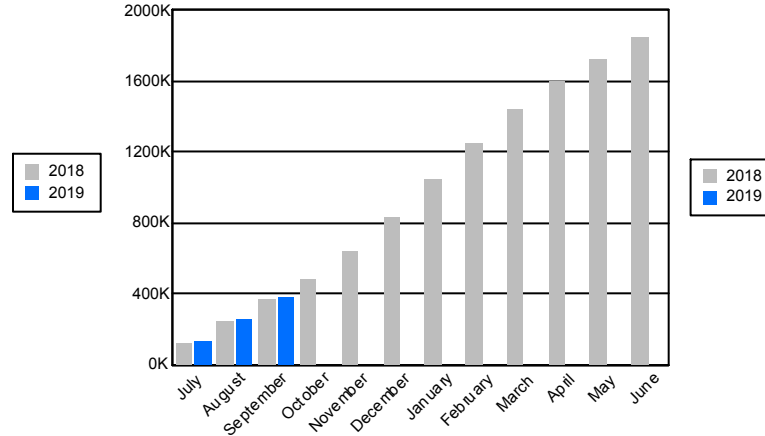
Core Report Citywide Total from Heat/Light/Power Expenditures: Energy Cost, Usage, and CO2e Emissions

September 2018

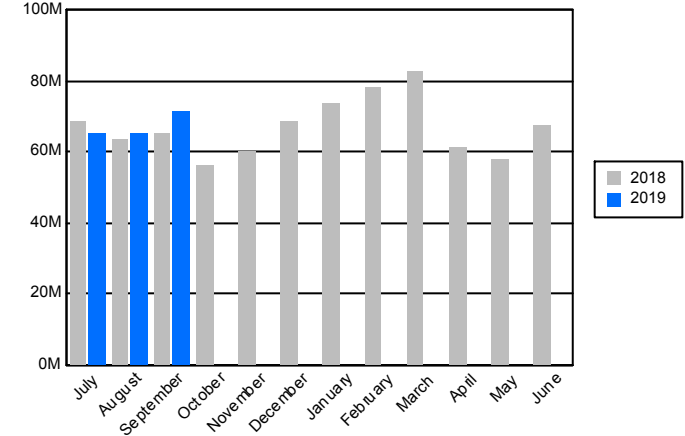
Citywide Energy Usage in Millions of BTUs



Citywide CO2e Emissions (FY Cumulative)

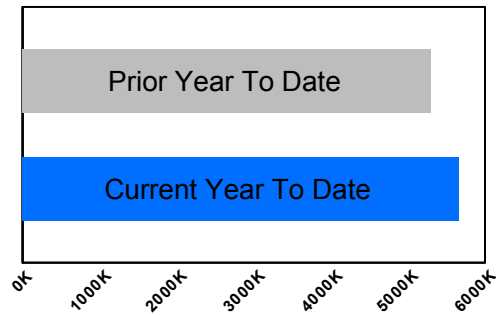


Citywide Cost

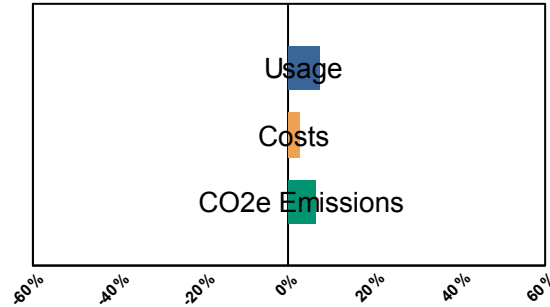


Current Year to Date compared to Prior Year to Date

Millions of BTUs



% Change



	Degree Days	
	Heating	Cooling
YTD Current FY	23	1,015
YTD Prior FY	17	853
September, 2018	23	203
September, 2017	17	190



## Core Report Citywide Total from Heat/Light/Power Expenditures: Energy Cost, Usage, and CO2e Emissions

September 2018

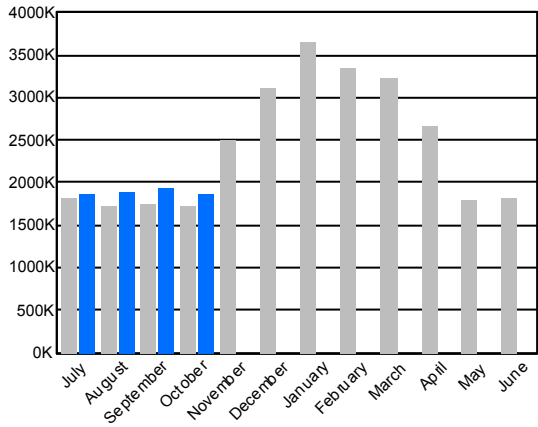
Year To Date	July	August	September	October	November	December	January	February	March	April	May	June	
<b>Energy Usage</b>													
<b>Total Energy in Millions of BTUs</b>													
FY 2019	5,673,803	1,868,316	1,891,563	1,913,924									
FY 2018	5,292,955	1,820,989	1,714,936	1,757,030	1,723,223	2,508,187	3,121,947	3,677,804	3,337,340	3,219,034	2,668,627	1,804,258	1,812,553
% Change	7.2%	2.6%	10.3%	8.9%									
<b>Energy Usage By Energy Type</b>													
<b>Electric Demand (kw)</b>													
FY 2019	2,870,325	943,883	920,697	1,005,745									
FY 2018	2,775,589	949,629	895,970	929,990	945,843	800,736	748,791	748,738	751,459	739,321	750,563	885,531	952,398
% Change	3.4%	-0.6%	2.8%	8.1%									
<b>Electric consumption (kwh)</b>													
FY 2019	1,141,999,114	375,235,327	374,735,703	392,028,084									
FY 2018	1,115,695,588	379,667,738	366,775,923	369,251,927	353,603,282	349,161,636	335,717,001	345,268,507	350,311,915	319,936,631	303,014,560	319,808,571	372,000,370
% Change	2.4%	-1.2%	2.2%	6.2%									
<b>Natural gas (Therms)</b>													
FY 2019	14,411,099	4,724,056	5,016,681	4,670,362									
FY 2018	11,555,579	4,044,322	3,578,002	3,933,255	4,268,741	11,135,258	17,171,757	20,894,719	19,016,832	18,687,432	14,514,507	6,193,409	4,519,747
% Change	24.7%	16.8%	40.2%	18.7%									
<b>Steam (mlbs)</b>													
FY 2019	299,907	103,146	99,287	97,474									
FY 2018	294,964	108,085	94,282	92,597	80,113	181,683	231,806	366,933	214,864	231,249	163,794	83,613	81,402
% Change	1.7%	-4.6%	5.3%	5.3%									
<b>Energy Cost</b>													
<b>Total Cost</b>													
FY 2019	\$202,121,392	\$65,295,194	\$65,260,348	\$71,565,849									
FY 2018	\$197,284,962	\$68,560,005	\$63,384,042	\$65,340,915	\$56,215,370	\$60,332,116	\$68,793,497	\$73,367,581	\$78,206,802	\$82,438,655	\$61,035,551	\$57,870,439	\$67,294,265
% Change	2.5%	-4.8%	3.0%	9.5%									
<b>Energy Cost By Energy Type</b>													
<b>Electricity</b>													
FY 2019	\$185,142,725	\$59,473,531	\$59,344,172	\$66,325,023									
FY 2018	\$183,188,294	\$63,428,238	\$58,987,045	\$60,773,011	\$51,342,181	\$46,429,150	\$48,399,367	\$45,172,264	\$51,743,936	\$58,575,247	\$42,203,017	\$49,837,502	\$61,507,761
% Change	1.1%	-6.2%	0.6%	9.1%									
<b>Natural Gas</b>													
FY 2019	\$12,123,757	\$4,195,845	\$4,317,343	\$3,610,569									
FY 2018	\$9,354,923	\$3,357,023	\$2,878,173	\$3,119,727	\$3,578,835	\$8,101,782	\$13,518,194	\$16,888,701	\$18,465,862	\$16,179,248	\$13,227,347	\$6,368,723	\$4,450,370
% Change	29.6%	25.0%	50.0%	15.7%									
<b>Steam</b>													
FY 2019	\$4,854,910	\$1,625,819	\$1,598,833	\$1,630,258									
FY 2018	\$4,741,745	\$1,774,744	\$1,518,824	\$1,448,177	\$1,294,354	\$5,801,184	\$6,875,936	\$11,306,617	\$7,997,003	\$7,684,160	\$5,605,186	\$1,664,214	\$1,336,134
% Change	2.4%	-8.4%	5.3%	12.6%									



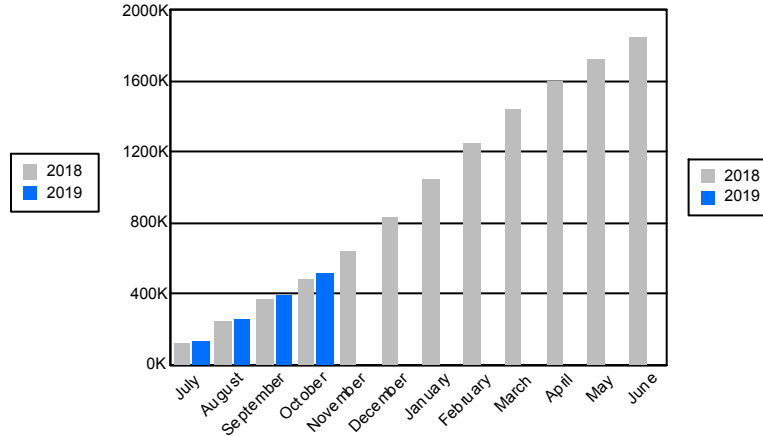
Core Report Citywide Total from Heat/Light/Power Expenditures: Energy Cost, Usage, and CO2e Emissions

October 2018

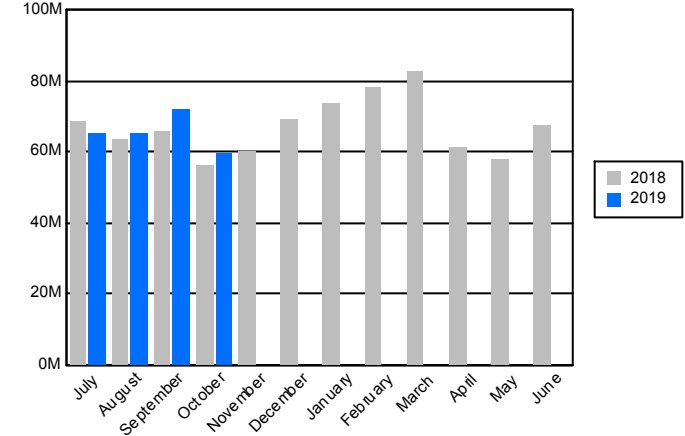
Citywide Energy Usage in Millions of BTUs



Citywide CO2e Emissions (FY Cumulative)

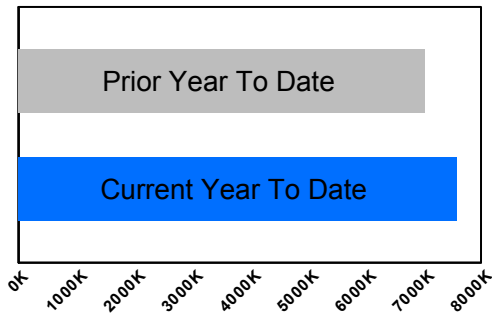


Citywide Cost

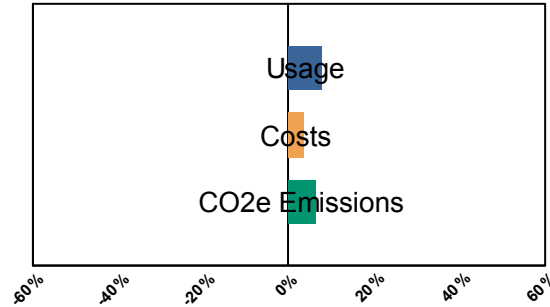


Current Year to Date compared to Prior Year to Date

Millions of BTUs



% Change



	Degree Days	
	Heating	Cooling
YTD Current FY	299	1,074
YTD Prior FY	116	933
October, 2018	276	59
October, 2017	99	80



Core Report Citywide Total from Heat/Light/Power Expenditures: Energy Cost, Usage, and CO2e Emissions

October 2018

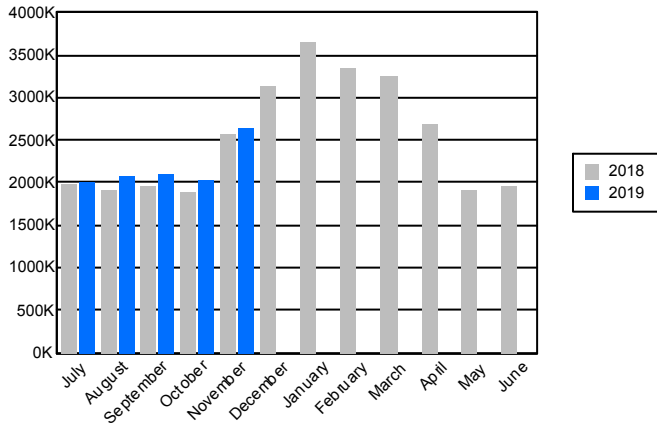
Year To Date	July	August	September	October	November	December	January	February	March	April	May	June
<b>Energy Usage</b>												
<b>Total Energy in Millions of BTUs</b>												
FY 2019	7,574,572	1,874,081	1,896,580	1,942,341	1,861,571							
FY 2018	7,025,161	1,823,146	1,717,481	1,759,485	1,725,049	2,510,171	3,124,183	3,644,947	3,340,086	3,221,155	2,669,730	1,814,477
% Change	7.8%	2.8%	10.4%	10.4%	7.9%							
<b>Energy Usage By Energy Type</b>												
<b>Electric Demand (kw)</b>												
FY 2019	3,810,087	946,284	922,864	1,012,032	928,907							
FY 2018	3,715,591	950,857	891,740	925,625	947,369	792,718	749,645	749,865	752,531	740,419	751,809	954,196
% Change	2.5%	-0.5%	3.5%	9.3%	-1.9%							
<b>Electric consumption (kwh)</b>												
FY 2019	1,485,968,198	376,238,603	375,584,937	393,291,285	340,853,373							
FY 2018	1,471,873,404	380,311,506	367,521,266	369,961,114	354,079,518	349,592,022	336,198,121	345,949,212	350,964,511	320,656,202	303,544,203	372,512,118
% Change	1.0%	-1.1%	2.2%	6.3%	-3.7%							
<b>Natural gas (Therms)</b>												
FY 2019	20,396,832	4,747,457	5,037,867	4,911,347	5,700,161							
FY 2018	15,826,288	4,043,924	3,578,006	3,933,606	4,270,752	11,140,411	17,177,693	20,901,739	19,022,021	18,684,089	14,507,466	6,191,824
% Change	28.9%	17.4%	40.8%	24.9%	33.5%							
<b>Steam (mlbs)</b>												
FY 2019	414,686	103,146	99,287	97,480	114,773							
FY 2018	375,077	108,085	94,282	92,597	80,113	181,683	231,806	334,815	214,864	231,249	163,794	81,402
% Change	10.6%	-4.6%	5.3%	5.3%	43.3%							
<b>Energy Cost</b>												
<b>Total Cost</b>												
FY 2019	\$262,607,941	\$65,427,507	\$65,364,163	\$72,130,736	\$59,685,535							
FY 2018	\$253,959,339	\$68,667,406	\$63,527,619	\$65,471,505	\$56,292,808	\$60,287,832	\$68,842,013	\$73,462,271	\$78,311,890	\$82,568,020	\$61,089,493	\$57,935,851
% Change	3.4%	-4.7%	2.9%	10.2%	6.0%							
<b>Energy Cost By Energy Type</b>												
<b>Electricity</b>												
FY 2019	\$239,058,120	\$59,592,956	\$59,436,584	\$66,727,254	\$53,301,326							
FY 2018	\$234,986,921	\$63,536,023	\$59,130,595	\$60,903,237	\$51,417,066	\$46,379,841	\$48,441,852	\$45,260,616	\$51,842,546	\$58,708,209	\$42,264,960	\$49,904,921
% Change	1.7%	-6.2%	0.5%	9.6%	3.7%							
<b>Natural Gas</b>												
FY 2019	\$16,791,063	\$4,208,731	\$4,328,746	\$3,772,542	\$4,481,043							
FY 2018	\$12,936,319	\$3,356,639	\$2,878,200	\$3,120,091	\$3,581,389	\$8,106,807	\$13,524,225	\$16,895,038	\$18,472,340	\$16,175,651	\$13,219,347	\$6,366,716
% Change	29.8%	25.4%	50.4%	20.9%	25.1%							
<b>Steam</b>												
FY 2019	\$6,758,758	\$1,625,819	\$1,598,833	\$1,630,940	\$1,903,166							
FY 2018	\$6,036,099	\$1,774,744	\$1,518,824	\$1,448,177	\$1,294,354	\$5,801,184	\$6,875,936	\$11,306,617	\$7,997,003	\$7,684,160	\$5,605,186	\$1,336,134
% Change	12.0%	-8.4%	5.3%	12.6%	47.0%							



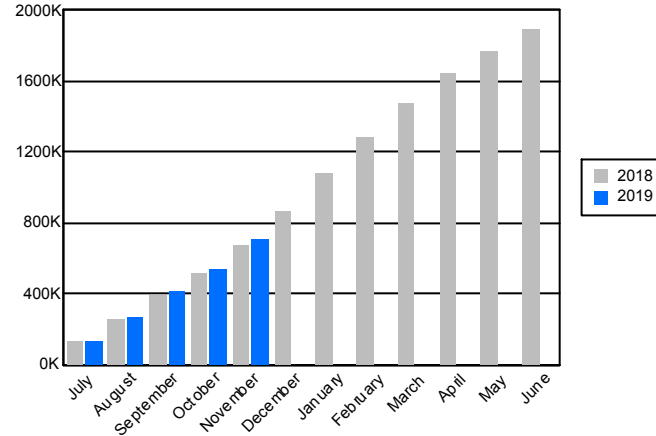
Core Report Citywide Total from Heat/Light/Power Expenditures: Energy Cost, Usage, and CO2e Emissions

November 2018

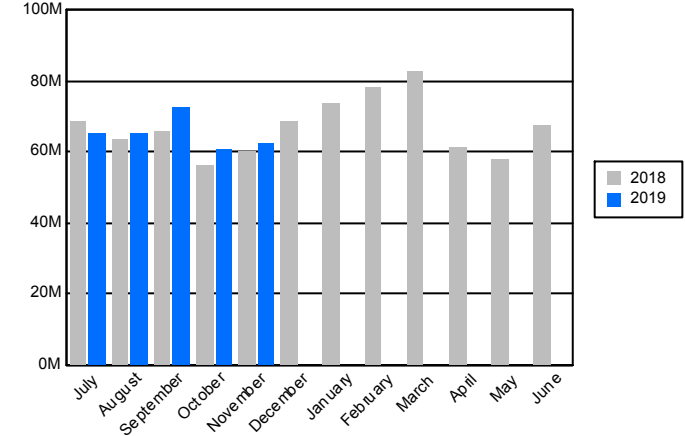
Citywide Energy Usage in Millions of BTUs



Citywide CO2e Emissions (FY Cumulative)

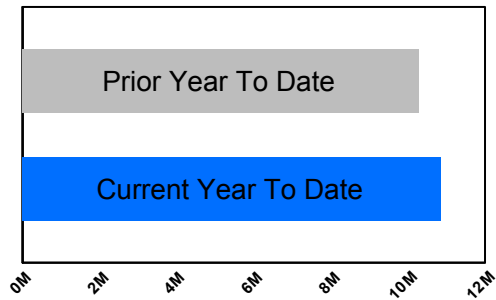


Citywide Cost

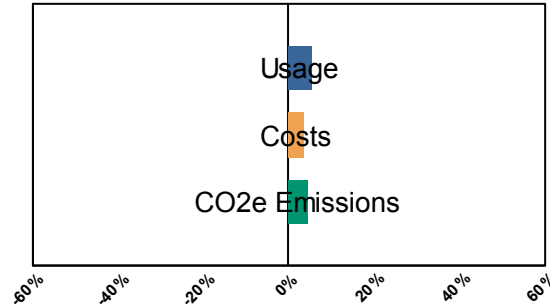


Current Year to Date compared to Prior Year to Date

Millions of BTUs



% Change



	Degree Days	
	Heating	Cooling
YTD Current FY	911	1,077
YTD Prior FY	662	933
November, 2018	612	3
November, 2017	546	0



## Core Report Citywide Total from Heat/Light/Power Expenditures: Energy Cost, Usage, and CO2e Emissions

November 2018

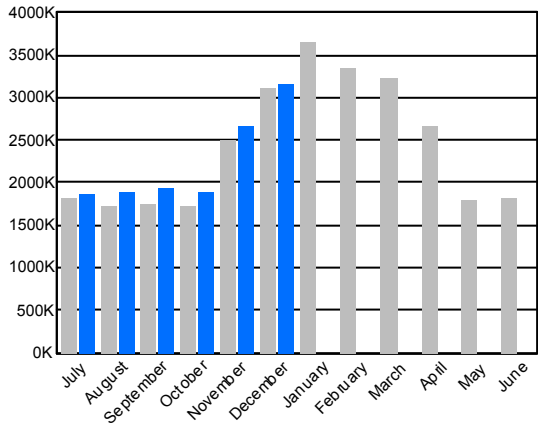
	Year To Date	July	August	September	October	November	December	January	February	March	April	May	June
<b>Energy Usage</b>													
<b>Total Energy in Millions of BTUs</b>													
FY 2019	10,865,714	2,018,650	2,069,089	2,110,192	2,033,917	2,633,866							
FY 2018	10,306,084	1,981,547	1,912,282	1,954,278	1,883,809	2,574,168	3,135,794	3,649,270	3,348,232	3,242,970	2,689,582	1,920,918	1,963,660
% Change	5.4%	1.9%	8.2%	8.0%	8.0%	2.3%							
<b>Energy Usage By Energy Type</b>													
<b>Electric Demand (kw)</b>													
FY 2019	4,593,467	946,358	923,665	1,014,060	930,589	778,795							
FY 2018	4,508,339	950,863	891,744	925,631	947,377	792,724	749,645	750,700	745,378	740,487	751,437	886,708	954,343
% Change	1.9%	-0.5%	3.6%	9.6%	-1.8%	-1.8%							
<b>Electric consumption (kwh)</b>													
FY 2019	1,830,294,806	376,240,904	375,879,795	393,739,058	340,308,207	344,126,842							
FY 2018	1,821,474,389	380,312,714	367,522,570	369,961,769	354,080,899	349,596,437	336,196,688	345,942,842	350,945,390	320,674,529	303,573,524	320,105,314	372,555,352
% Change	0.5%	-1.1%	2.3%	6.4%	-3.9%	-1.6%							
<b>Natural gas (Therms)</b>													
FY 2019	32,929,521	4,740,985	5,019,290	4,892,149	6,074,754	12,202,343							
FY 2018	26,959,258	4,044,266	3,578,209	3,933,744	4,267,647	11,135,392	17,173,938	20,899,026	19,035,846	18,674,079	14,509,319	6,192,578	4,510,244
% Change	22.1%	17.2%	40.3%	24.4%	42.3%	9.6%							
<b>Steam (mlbs)</b>													
FY 2019	1,186,886	233,124	254,464	248,076	237,177	214,045							
FY 2018	1,247,307	249,837	268,629	266,944	222,494	239,403	242,540	338,947	220,977	251,616	181,308	187,204	215,815
% Change	-4.8%	-6.7%	-5.3%	-7.1%	6.6%	-10.6%							
<b>Energy Cost</b>													
<b>Total Cost</b>													
FY 2019	\$325,683,807	\$65,429,763	\$65,389,386	\$72,215,793	\$60,460,080	\$62,188,785							
FY 2018	\$314,242,753	\$68,668,079	\$63,528,014	\$65,471,788	\$56,290,576	\$60,284,296	\$68,838,368	\$73,449,259	\$78,294,511	\$82,562,307	\$61,092,802	\$57,930,349	\$67,506,596
% Change	3.6%	-4.7%	2.9%	10.3%	7.4%	3.2%							
<b>Energy Cost By Energy Type</b>													
<b>Electricity</b>													
FY 2019	\$285,624,209	\$59,596,590	\$59,473,260	\$66,819,620	\$53,781,454	\$45,953,284							
FY 2018	\$281,368,265	\$63,536,340	\$59,130,817	\$60,903,470	\$51,417,369	\$46,380,269	\$48,441,432	\$45,249,288	\$51,814,436	\$58,707,588	\$42,255,252	\$49,892,418	\$61,602,661
% Change	1.5%	-6.2%	0.6%	9.7%	4.6%	-0.9%							
<b>Natural Gas</b>													
FY 2019	\$27,094,058	\$4,201,797	\$4,311,771	\$3,759,428	\$4,761,696	\$10,059,365							
FY 2018	\$21,037,205	\$3,356,995	\$2,878,373	\$3,120,141	\$3,578,853	\$8,102,843	\$13,521,000	\$16,893,355	\$18,483,071	\$16,170,558	\$13,218,616	\$6,365,853	\$4,562,535
% Change	28.8%	25.2%	49.8%	20.5%	33.1%	24.1%							
<b>Steam</b>													
FY 2019	\$12,965,540	\$1,631,376	\$1,604,354	\$1,636,744	\$1,916,930	\$6,176,136							
FY 2018	\$11,837,283	\$1,774,744	\$1,518,824	\$1,448,177	\$1,294,354	\$5,801,184	\$6,875,936	\$11,306,617	\$7,997,003	\$7,684,160	\$5,618,934	\$1,672,078	\$1,341,400
% Change	9.5%	-8.1%	5.6%	13.0%	48.1%	6.5%							



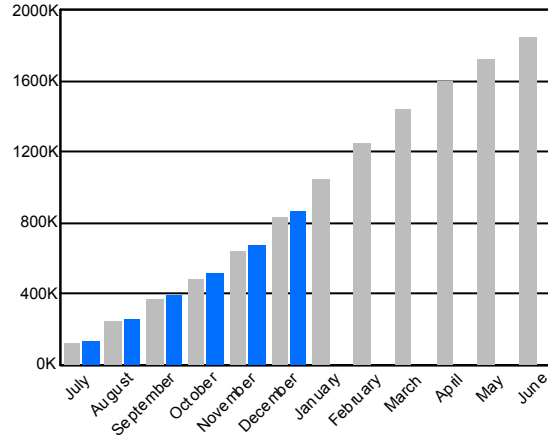
Core Report Citywide Total from Heat/Light/Power Expenditures: Energy Cost, Usage, and CO2e Emissions

December 2018

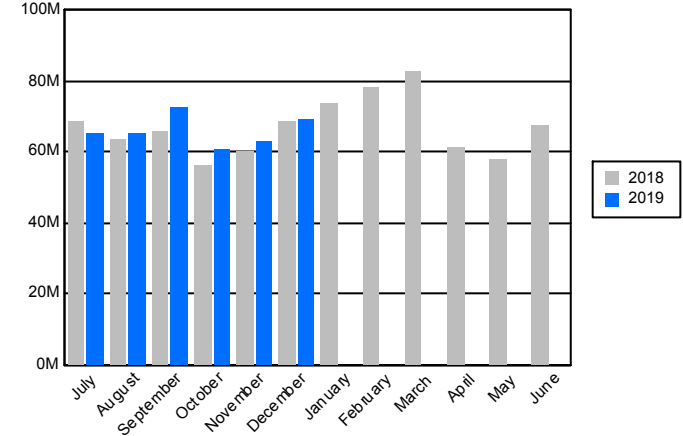
Citywide Energy Usage in Millions of BTUs



Citywide CO2e Emissions (FY Cumulative)

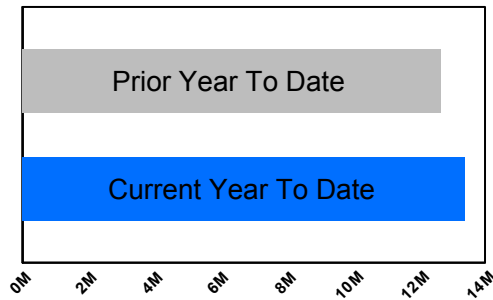


Citywide Cost

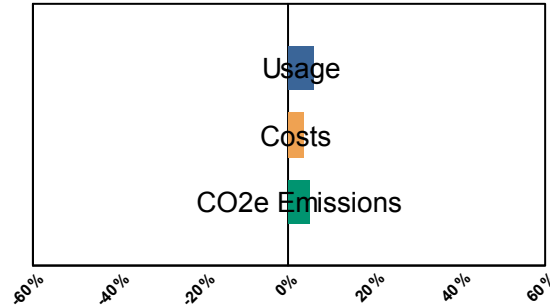


Current Year to Date compared to Prior Year to Date

Millions of BTUs



% Change



	Degree Days	
	Heating	Cooling
YTD Current FY	1,675	1,077
YTD Prior FY	1,582	933
December, 2018	764	0
December, 2017	920	0



## Core Report Citywide Total from Heat/Light/Power Expenditures: Energy Cost, Usage, and CO2e Emissions

December 2018

	Year To Date	July	August	September	October	November	December	January	February	March	April	May	June
<b>Energy Usage</b>													
<b>Total Energy in Millions of BTUs</b>													
FY 2019	13,425,137	1,873,832	1,896,264	1,942,468	1,899,136	2,663,965	3,149,471						
FY 2018	12,658,325	1,823,302	1,717,624	1,759,709	1,725,067	2,508,876	3,123,748	3,645,577	3,341,677	3,220,800	2,671,051	1,805,836	1,814,370
% Change	6.1%	2.8%	10.4%	10.4%	10.1%	6.2%	0.8%						
<b>Energy Usage By Energy Type</b>													
<b>Electric Demand (kw)</b>													
FY 2019	5,339,702	946,619	924,752	1,015,201	929,339	779,893	743,898						
FY 2018	5,259,225	951,178	892,061	925,923	947,698	792,714	749,651	750,807	745,469	731,256	751,501	886,852	954,789
% Change	1.5%	-0.5%	3.7%	9.6%	-1.9%	-1.6%	-0.8%						
<b>Electric consumption (kwh)</b>													
FY 2019	2,159,047,618	376,218,959	375,893,030	393,598,230	340,289,549	345,301,122	327,746,728						
FY 2018	2,157,122,676	380,347,234	367,556,664	370,019,606	354,143,806	349,189,440	335,865,926	345,834,915	350,826,290	320,571,759	303,495,709	320,150,415	372,629,245
% Change	0.1%	-1.1%	2.3%	6.4%	-3.9%	-1.1%	-2.4%						
<b>Natural gas (Therms)</b>													
FY 2019	51,191,830	4,741,744	5,020,142	4,898,072	6,084,643	12,709,332	17,737,897						
FY 2018	44,150,956	4,044,267	3,578,227	3,933,846	4,268,731	11,141,195	17,184,690	20,911,942	19,042,649	18,683,416	14,514,307	6,193,389	4,512,257
% Change	15.9%	17.2%	40.3%	24.5%	42.5%	14.1%	3.2%						
<b>Steam (mlbs)</b>													
FY 2019	838,830	103,495	99,650	97,845	115,705	192,018	230,117						
FY 2018	788,566	108,085	94,282	92,597	80,113	181,683	231,806	334,815	214,864	231,249	164,512	83,983	81,778
% Change	6.4%	-4.2%	5.7%	5.7%	44.4%	5.7%	-0.7%						
<b>Energy Cost</b>													
<b>Total Cost</b>													
FY 2019	\$395,839,544	\$65,449,831	\$65,438,276	\$72,227,646	\$60,471,401	\$63,124,843	\$69,127,546						
FY 2018	\$383,111,441	\$68,677,415	\$63,539,086	\$65,484,059	\$56,303,936	\$60,275,476	\$68,831,469	\$73,458,832	\$78,298,786	\$82,502,291	\$61,096,683	\$57,939,249	\$67,534,561
% Change	3.3%	-4.7%	3.0%	10.3%	7.4%	4.7%	0.4%						
<b>Energy Cost By Energy Type</b>													
<b>Electricity</b>													
FY 2019	\$331,667,441	\$59,615,297	\$59,520,695	\$66,824,269	\$53,780,317	\$46,435,988	\$45,490,874						
FY 2018	\$329,824,163	\$63,545,675	\$59,141,838	\$60,915,561	\$51,429,496	\$46,366,360	\$48,425,231	\$45,248,280	\$51,810,612	\$58,638,794	\$42,253,633	\$49,900,098	\$61,627,777
% Change	0.6%	-6.2%	0.6%	9.7%	4.6%	0.2%	-6.1%						
<b>Natural Gas</b>													
FY 2019	\$44,085,981	\$4,203,158	\$4,313,226	\$3,766,633	\$4,773,213	\$10,507,430	\$16,522,322						
FY 2018	\$34,574,060	\$3,356,995	\$2,878,424	\$3,120,321	\$3,580,086	\$8,107,932	\$13,530,302	\$16,903,936	\$18,491,171	\$16,179,337	\$13,224,116	\$6,367,073	\$4,565,384
% Change	27.5%	25.2%	49.8%	20.7%	33.3%	29.6%	22.1%						
<b>Steam</b>													
FY 2019	\$20,086,122	\$1,631,376	\$1,604,354	\$1,636,744	\$1,917,871	\$6,181,425	\$7,114,351						
FY 2018	\$18,713,219	\$1,774,744	\$1,518,824	\$1,448,177	\$1,294,354	\$5,801,184	\$6,875,936	\$11,306,617	\$7,997,003	\$7,684,160	\$5,618,934	\$1,672,078	\$1,341,400
% Change	7.3%	-8.1%	5.6%	13.0%	48.2%	6.6%	3.5%						