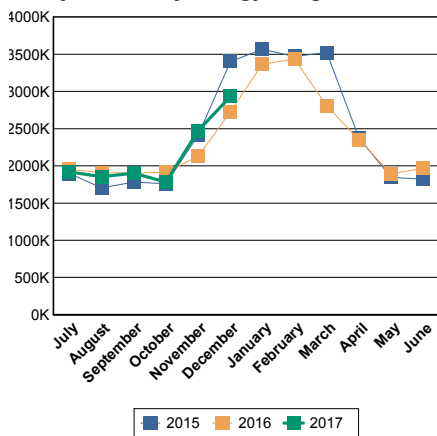


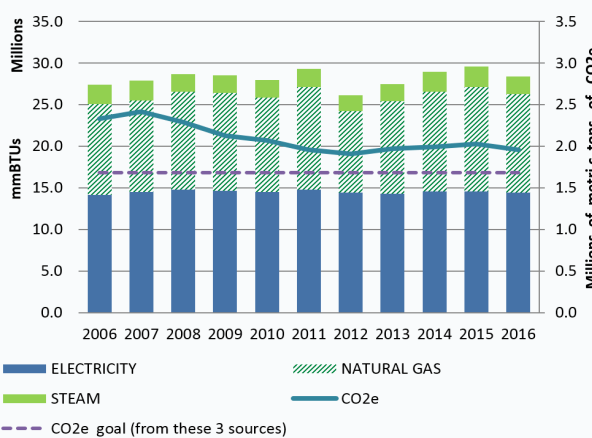


Energy Dashboard Report - January 2017

Citywide Utility Energy Usage in BTU



City Government Energy Use, by Fiscal Year



• Bar chart covers utility energy for City government buildings and operations. Utility energy data are from citywide billings handled through DCAS.

• FY16 energy total was 28.4 million mmBTUs. This resulted in 1.96 million metric tons of CO2e based on recent statewide emissions factors.

• Approximate target for annual CO2e from city government operations' utility energy sources: 1.69 million metric tons by 2025. [Target is based on applying 35% goal to Building, Street & Traffic Lighting, and Water Supply and Wastewater sectors of City government operations. For more information and updates, see the City's annual Inventory of Greenhouse Gas Emissions.]

Energy Usage (From Utility Purchases): Data below are from monthly utility bills for electricity, natural gas, and steam. Usage is for the month and fiscal year-to-date indicated, expressed as mmBTUs (millions of British thermal units). Late billings may impact totals for selected agencies.

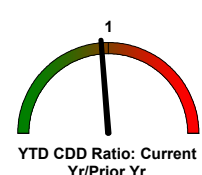
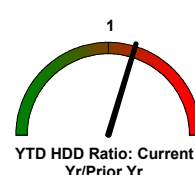
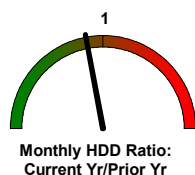
Usage is reported as a group for libraries, cultural institutions, and smaller City agencies (Other). Relative size is % of FY16 total. More detailed reports, including Citywide CORE and Agency CORE reports, are sent to agency energy liaison officers and are available through the DCAS EC3 energy reporting system.

* In millions of Btus (mmBtus) for electricity, natural gas, and steam

	Relative Size	January			Year To Date		
	[% of Total]	FY 16	FY 17	-- % Change --	FY 16	FY 17	--% Change --
CITY GOVERNMENT TOTAL		3,367,017	3,301,712	-1.9%	15,897,680	16,289,651	2.5%
Department of Education	22%	905,542	919,049	1.5%	3,535,161	3,849,074	8.9%
Health and Hospitals Corporation	13%	380,401	368,571	-3.1%	2,152,061	2,150,947	-0.1%
Department of Environmental Protection	12%	343,970	392,731	14.2%	1,972,888	2,098,492	6.4%
City University of New York - Senior Colleges	9%	306,984	303,390	-1.2%	1,488,555	1,536,098	3.2%
Department of Correction	6%	221,032	174,381	-21.1%	1,004,478	854,957	-14.9%
Department of Citywide Administrative Services	4%	164,821	135,496	-17.8%	668,051	664,457	-0.5%
Department Of Transportation	4%	113,953	109,578	-3.8%	717,324	723,641	0.9%
Department of Sanitation	4%	163,509	168,342	3.0%	531,963	568,534	6.9%
City University of New York - Community Colleges	3%	109,313	81,834	-25.1%	502,370	479,103	-4.6%
Police Department	3%	101,246	103,345	2.1%	448,812	479,073	6.7%
Department of Parks and Recreation	2%	66,342	73,277	10.5%	279,343	292,709	4.8%
Fire Department	1%	54,359	56,656	4.2%	226,098	242,223	7.1%
Department of Homeless Services	1%	46,055	45,727	-0.7%	180,980	187,322	3.5%
Human Resources Administration	1%	26,610	27,352	2.8%	155,265	165,343	6.5%
Department Of Health and Mental Hygiene	1%	26,755	25,913	-3.1%	172,860	167,011	-3.4%
Administration for Children's Services	1%	27,470	27,052	-1.5%	147,223	148,944	1.2%
Cultural Institutions	7%	185,180	165,083	-10.9%	1,019,759	992,478	-2.7%
Libraries	2%	53,515	56,412	5.4%	264,926	282,713	6.7%
Other	3%	69,958	67,521	-3.5%	429,565	406,530	-5.4%

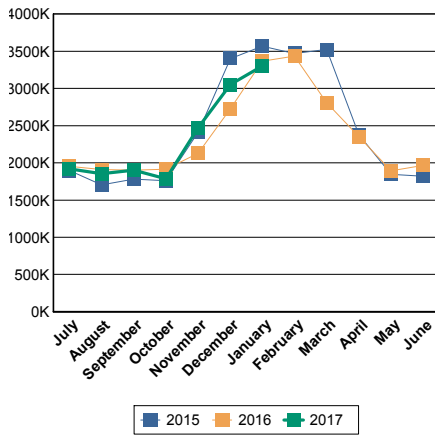
Degree Days are a weather indicator. Heating and cooling degree days are the cumulative monthly difference in daily temperature from a reference temperature of 65 degrees (designated as the temperature at which neither heating nor cooling is needed). A dial value > 1 means greater energy needs as compared to the prior period. (In spring and fall, small year-to-year changes in degree days can appear large on the dial without having a major impact on energy use.) Even when weather causes increases in energy usage, agencies should still aim to drive down usage.

Degree Days	Heating	Cooling
YTD Current FY	2,334	1,135
YTD Prior FY	1,965	1,194
January FY17	829	0
January FY16	940	0

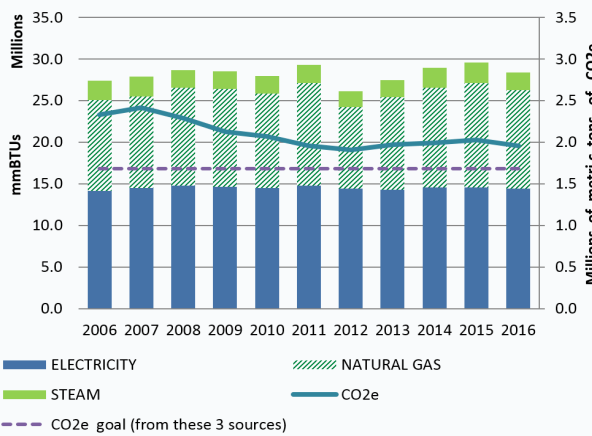


Energy Dashboard Report - February 2017

Citywide Utility Energy Usage in BTU



City Government Energy Use, by Fiscal Year



• Bar chart covers utility energy for City government buildings and operations. Utility energy data are from citywide billings handled through DCAS.

• FY16 energy total was 28.4 million mmBTUs. This resulted in 1.96 million metric tons of CO2e based on recent statewide emissions factors.

• Approximate target for annual CO2e from city government operations' utility energy sources: 1.69 million metric tons by 2025. [Target is based on applying 35% goal to Building, Street & Traffic Lighting, and Water Supply and Wastewater sectors of City government operations. For more information and updates, see the City's annual Inventory of Greenhouse Gas Emissions.]

Energy Usage (From Utility Purchases): Data below are from monthly utility bills for electricity, natural gas, and steam. Usage is for the month and fiscal year-to-date indicated, expressed as mmBTUs (millions of British thermal units). Late billings may impact totals for selected agencies.

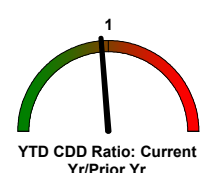
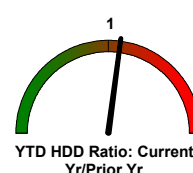
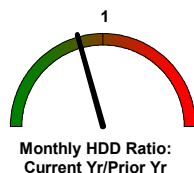
Usage is reported as a group for libraries, cultural institutions, and smaller City agencies (Other). Relative size is % of FY16 total. More detailed reports, including Citywide CORE and Agency CORE reports, are sent to agency energy liaison officers and are available through the DCAS EC3 energy reporting system.

* In millions of Btus (mmBtus) for electricity, natural gas, and steam

	Relative Size [% of Total]	February			Year To Date		
		FY 16	FY 17	-- % Change --	FY 16	FY 17	--% Change --
CITY GOVERNMENT TOTAL		3,434,837	3,202,643	-6.8%	19,334,683	19,597,304	1.4%
Department of Education	22%	928,993	913,000	-1.7%	4,464,153	4,779,241	7.1%
Health and Hospitals Corporation	13%	379,723	343,516	-9.5%	2,532,329	2,497,041	-1.4%
Department of Environmental Protection	12%	398,042	391,559	-1.6%	2,370,629	2,513,477	6.0%
City University of New York - Senior Colleges	9%	297,834	278,868	-6.4%	1,788,123	1,819,028	1.7%
Department of Correction	6%	190,170	162,448	-14.6%	1,194,648	1,017,405	-14.8%
Department of Citywide Administrative Services	4%	156,215	125,259	-19.8%	824,266	810,582	-1.7%
Department Of Transportation	4%	99,633	96,406	-3.2%	816,957	822,348	0.7%
Department of Sanitation	4%	183,190	157,949	-13.8%	715,152	724,994	1.4%
City University of New York - Community Colleges	3%	103,034	78,049	-24.2%	605,404	557,082	-8.0%
Police Department	3%	107,992	101,631	-5.9%	556,803	582,428	4.6%
Department of Parks and Recreation	2%	72,535	72,315	-0.3%	351,878	364,767	3.7%
Fire Department	1%	59,018	59,557	0.9%	285,304	302,869	6.2%
Department of Homeless Services	1%	49,723	46,244	-7.0%	230,703	234,864	1.8%
Human Resources Administration	1%	28,109	28,630	1.9%	183,374	194,351	6.0%
Department Of Health and Mental Hygiene	1%	27,668	25,010	-9.6%	200,528	194,713	-2.9%
Administration for Children's Services	1%	29,368	28,678	-2.3%	176,592	178,983	1.4%
Cultural Institutions	7%	192,672	165,698	-14.0%	1,212,431	1,173,111	-3.2%
Libraries	2%	56,443	56,200	-0.4%	321,369	339,615	5.7%
Other	3%	74,475	71,624	-3.8%	504,040	490,406	-2.7%

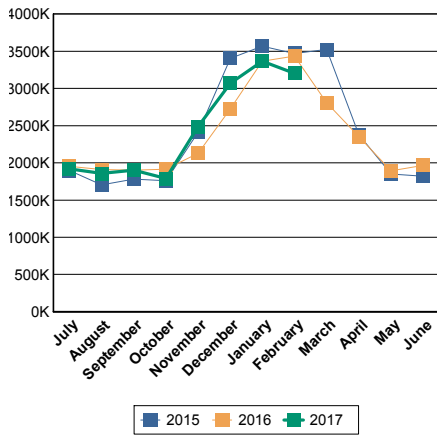
Degree Days are a weather indicator. Heating and cooling degree days are the cumulative monthly difference in daily temperature from a reference temperature of 65 degrees (designated as the temperature at which neither heating nor cooling is needed). A dial value > 1 means greater energy needs as compared to the prior period. (In spring and fall, small year-to-year changes in degree days can appear large on the dial without having a major impact on energy use.) Even when weather causes increases in energy usage, agencies should still aim to drive down usage.

Degree Days	Heating	Cooling
YTD Current FY	2,982	1,135
YTD Prior FY	2,750	1,194
February FY17	648	0
February FY16	785	0

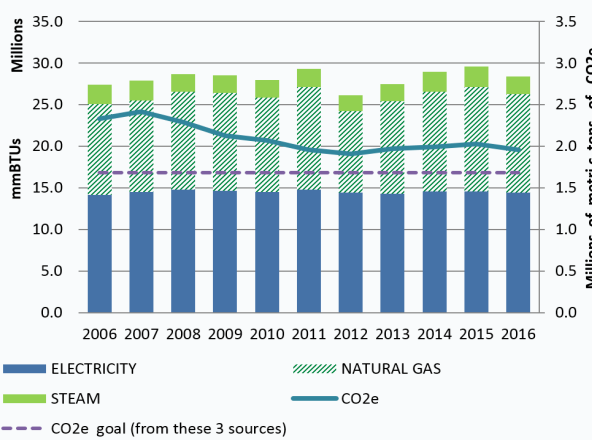


Energy Dashboard Report - March 2017

Citywide Utility Energy Usage in BTU



City Government Energy Use, by Fiscal Year



• Bar chart covers utility energy for City government buildings and operations. Utility energy data are from citywide billings handled through DCAS.

• FY16 energy total was 28.4 million mmBTUs. This resulted in 1.96 million metric tons of CO2e based on recent statewide emissions factors.

• Approximate target for annual CO2e from city government operations' utility energy sources: 1.69 million metric tons by 2025. [Target is based on applying 35% goal to Building, Street & Traffic Lighting, and Water Supply and Wastewater sectors of City government operations. For more information and updates, see the City's annual Inventory of Greenhouse Gas Emissions.]

Energy Usage (From Utility Purchases): Data below are from monthly utility bills for electricity, natural gas, and steam. Usage is for the month and fiscal year-to-date indicated, expressed as mmBTUs (millions of British thermal units). Late billings may impact totals for selected agencies.

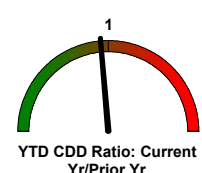
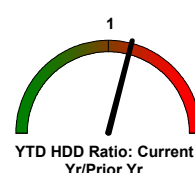
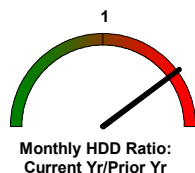
Usage is reported as a group for libraries, cultural institutions, and smaller City agencies (Other). Relative size is % of FY16 total. More detailed reports, including Citywide CORE and Agency CORE reports, are sent to agency energy liaison officers and are available through the DCAS EC3 energy reporting system.

* In millions of Btus (mmBtus) for electricity, natural gas, and steam

	Relative Size	March			Year To Date		
	[% of Total]	FY 16	FY 17	-- % Change --	FY 16	FY 17	--% Change --
CITY GOVERNMENT TOTAL		2,806,805	3,126,751	11.4%	22,137,003	22,879,738	3.4%
Department of Education	22%	721,109	892,473	23.8%	5,186,597	5,679,004	9.5%
Health and Hospitals Corporation	13%	351,545	335,652	-4.5%	2,883,873	2,881,937	-0.1%
Department of Environmental Protection	12%	322,235	378,356	17.4%	2,692,866	2,954,507	9.7%
City University of New York - Senior Colleges	9%	231,161	268,419	16.1%	2,019,283	2,085,434	3.3%
Department of Correction	6%	185,018	190,159	2.8%	1,379,666	1,209,397	-12.3%
Department of Citywide Administrative Services	4%	112,865	119,498	5.9%	937,131	946,752	1.0%
Department Of Transportation	4%	91,707	93,539	2.0%	908,693	921,945	1.5%
Department of Sanitation	4%	134,823	156,102	15.8%	849,976	891,453	4.9%
City University of New York - Community Colleges	3%	84,187	83,059	-1.3%	683,843	634,404	-7.2%
Police Department	3%	84,187	94,064	11.7%	640,990	676,778	5.6%
Department of Parks and Recreation	2%	61,012	65,416	7.2%	412,787	430,234	4.2%
Fire Department	1%	46,575	53,040	13.9%	331,879	355,280	7.1%
Department of Homeless Services	1%	40,675	43,802	7.7%	271,379	278,608	2.7%
Human Resources Administration	1%	24,785	26,434	6.7%	208,159	220,791	6.1%
Department Of Health and Mental Hygiene	1%	22,088	23,901	8.2%	222,616	219,377	-1.5%
Administration for Children's Services	1%	24,141	26,675	10.5%	200,733	205,699	2.5%
Cultural Institutions	7%	160,847	160,403	-0.3%	1,373,278	1,341,456	-2.3%
Libraries	2%	45,018	49,375	9.7%	366,387	389,179	6.2%
Other	3%	62,827	66,382	5.7%	566,867	557,503	-1.7%

Degree Days are a weather indicator. Heating and cooling degree days are the cumulative monthly difference in daily temperature from a reference temperature of 65 degrees (designated as the temperature at which neither heating nor cooling is needed). A dial value > 1 means greater energy needs as compared to the prior period. (In spring and fall, small year-to-year changes in degree days can appear large on the dial without having a major impact on energy use.) Even when weather causes increases in energy usage, agencies should still aim to drive down usage.

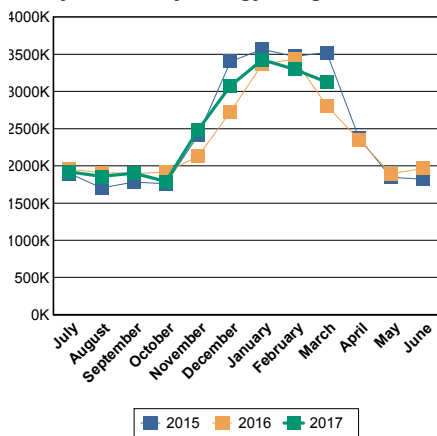
Degree Days	Heating	Cooling
YTD Current FY	3,775	1,135
YTD Prior FY	3,248	1,200
March FY17	793	0
March FY16	498	6



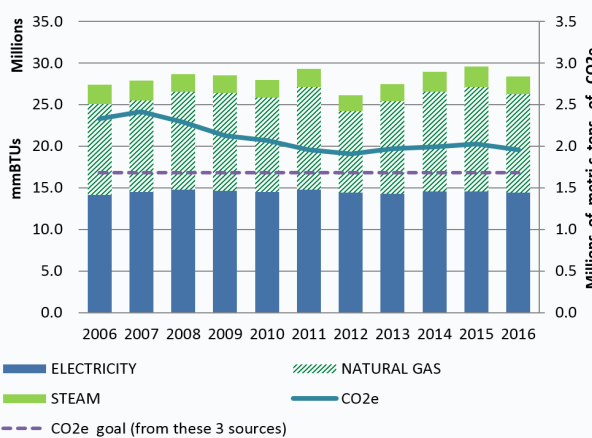


Energy Dashboard Report - April 2017

Citywide Utility Energy Usage in BTU



City Government Energy Use, by Fiscal Year



• Bar chart covers utility energy for City government buildings and operations. Utility energy data are from citywide billings handled through DCAS.

• FY16 energy total was 28.4 million mmBTUs. This resulted in 1.96 million metric tons of CO2e based on recent statewide emissions factors.

• Approximate target for annual CO2e from city government operations' utility energy sources: 1.69 million metric tons by 2025. [Target is based on applying 35% goal to Building, Street & Traffic Lighting, and Water Supply and Wastewater sectors of City government operations. For more information and updates, see the City's annual Inventory of Greenhouse Gas Emissions.]

Energy Usage (From Utility Purchases): Data below are from monthly utility bills for electricity, natural gas, and steam. Usage is for the month and fiscal year-to-date indicated, expressed as mmBTUs (millions of British thermal units). Late billings may impact totals for selected agencies.

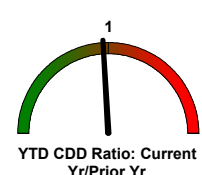
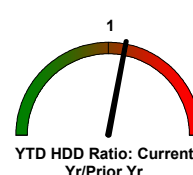
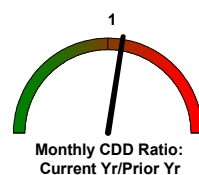
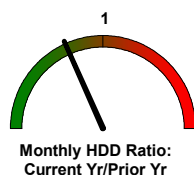
Usage is reported as a group for libraries, cultural institutions, and smaller City agencies (Other). Relative size is % of FY16 total. More detailed reports, including Citywide CORE and Agency CORE reports, are sent to agency energy liaison officers and are available through the DCAS EC3 energy reporting system.

* In millions of Btus (mmBtus) for electricity, natural gas, and steam

	Relative Size	April			Year To Date		
	[% of Total]	FY 16	FY 17	-- % Change --	FY 16	FY 17	--% Change --
CITY GOVERNMENT TOTAL		2,351,253	2,268,246	-3.5%	24,487,693	25,250,709	3.1%
Department of Education	22%	570,954	571,887	0.2%	5,757,645	6,263,004	8.8%
Health and Hospitals Corporation	13%	299,651	274,796	-8.3%	3,183,524	3,186,161	0.1%
Department of Environmental Protection	12%	300,247	313,212	4.3%	2,993,174	3,271,419	9.3%
City University of New York - Senior Colleges	9%	201,846	178,646	-11.5%	2,221,129	2,278,691	2.6%
Department of Correction	6%	153,969	129,409	-16.0%	1,533,635	1,338,806	-12.7%
Department of Citywide Administrative Services	4%	87,782	78,876	-10.1%	1,024,914	1,040,674	1.5%
Department Of Transportation	4%	90,712	79,936	-11.9%	999,411	1,005,088	0.6%
Department of Sanitation	4%	104,086	118,474	13.8%	954,062	1,019,746	6.9%
City University of New York - Community Colleges	3%	65,586	47,768	-27.2%	748,952	681,635	-9.0%
Police Department	3%	73,218	71,891	-1.8%	714,208	748,076	4.7%
Department of Parks and Recreation	2%	45,600	48,487	6.3%	458,386	479,599	4.6%
Fire Department	1%	35,941	39,662	10.4%	367,820	397,873	8.2%
Department of Homeless Services	1%	29,864	30,240	1.3%	301,243	309,646	2.8%
Human Resources Administration	1%	21,299	20,843	-2.1%	229,458	241,139	5.1%
Department Of Health and Mental Hygiene	1%	18,437	17,415	-5.5%	241,053	238,509	-1.1%
Administration for Children's Services	1%	20,151	20,515	1.8%	220,883	226,028	2.3%
Cultural Institutions	7%	140,979	131,633	-6.6%	1,514,257	1,483,200	-2.1%
Libraries	2%	36,900	39,615	7.4%	403,287	428,579	6.3%
Other	3%	54,031	54,940	1.7%	620,652	612,837	-1.3%

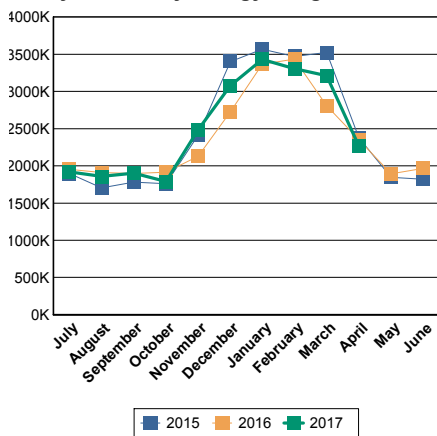
Degree Days are a weather indicator. Heating and cooling degree days are the cumulative monthly difference in daily temperature from a reference temperature of 65 degrees (designated as the temperature at which neither heating nor cooling is needed). A dial value > 1 means greater energy needs as compared to the prior period. (In spring and fall, small year-to-year changes in degree days can appear large on the dial without having a major impact on energy use.) Even when weather causes increases in energy usage, agencies should still aim to drive down usage.

Degree Days	Heating	Cooling
YTD Current FY	4,035	1,169
YTD Prior FY	3,603	1,213
April FY17	260	34
April FY16	355	13

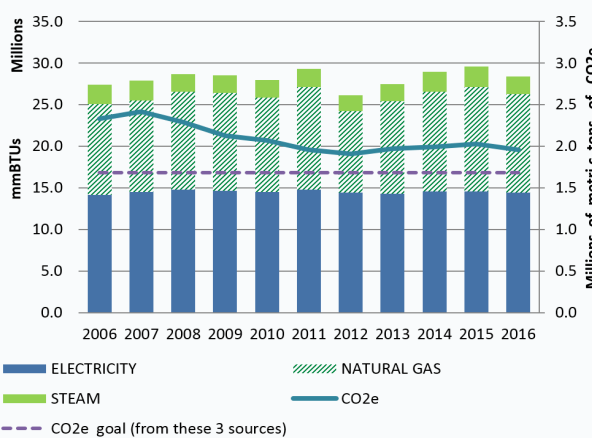


Energy Dashboard Report - May 2017

Citywide Utility Energy Usage in BTU



City Government Energy Use, by Fiscal Year



• Bar chart covers utility energy for City government buildings and operations. Utility energy data are from citywide billings handled through DCAS.

• FY16 energy total was 28.4 million mmBTUs. This resulted in 1.96 million metric tons of CO2e based on recent statewide emissions factors.

• Approximate target for annual CO2e from city government operations' utility energy sources: 1.69 million metric tons by 2025. [Target is based on applying 35% goal to Building, Street & Traffic Lighting, and Water Supply and Wastewater sectors of City government operations. For more information and updates, see the City's annual Inventory of Greenhouse Gas Emissions.]

Energy Usage (From Utility Purchases): Data below are from monthly utility bills for electricity, natural gas, and steam. Usage is for the month and fiscal year-to-date indicated, expressed as mmBTUs (millions of British thermal units). Late billings may impact totals for selected agencies.

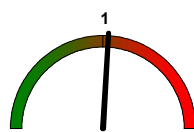
Usage is reported as a group for libraries, cultural institutions, and smaller City agencies (Other). Relative size is % of FY16 total. More detailed reports, including Citywide CORE and Agency CORE reports, are sent to agency energy liaison officers and are available through the DCAS EC3 energy reporting system.

* In millions of Btus (mmBtus) for electricity, natural gas, and steam

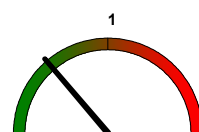
	Relative Size	May			Year To Date		
	[% of Total]	FY 16	FY 17	-- % Change --	FY 16	FY 17	--% Change --
CITY GOVERNMENT TOTAL		1,894,014	1,716,429	-9.4%	26,380,231	27,011,225	2.4%
Department of Education	22%	402,014	376,887	-6.3%	6,158,161	6,649,297	8.0%
Health and Hospitals Corporation	13%	270,779	241,280	-10.9%	3,454,303	3,444,053	-0.3%
Department of Environmental Protection	12%	271,380	251,663	-7.3%	3,264,554	3,523,727	7.9%
City University of New York - Senior Colleges	9%	156,717	132,983	-15.1%	2,377,846	2,410,419	1.4%
Department of Correction	6%	115,063	103,516	-10.0%	1,648,698	1,443,346	-12.5%
Department of Citywide Administrative Services	4%	68,568	57,388	-16.3%	1,093,482	1,106,474	1.2%
Department Of Transportation	4%	89,197	94,139	5.5%	1,088,608	1,101,431	1.2%
Department of Sanitation	4%	68,433	51,025	-25.4%	1,022,487	1,071,066	4.8%
City University of New York - Community Colleges	3%	54,774	42,133	-23.1%	803,726	723,769	-9.9%
Police Department	3%	55,350	50,320	-9.1%	769,559	798,399	3.7%
Department of Parks and Recreation	2%	30,841	30,190	-2.1%	489,256	509,516	4.1%
Fire Department	1%	26,169	25,279	-3.4%	393,989	422,522	7.2%
Department of Homeless Services	1%	21,996	18,633	-15.3%	323,239	327,640	1.4%
Human Resources Administration	1%	19,365	18,244	-5.8%	248,823	260,113	4.5%
Department Of Health and Mental Hygiene	1%	16,725	15,144	-9.5%	257,778	254,734	-1.2%
Administration for Children's Services	1%	17,051	16,179	-5.1%	237,934	242,717	2.0%
Cultural Institutions	7%	126,194	114,382	-9.4%	1,640,451	1,603,995	-2.2%
Libraries	2%	30,444	30,896	1.5%	433,731	459,273	5.9%
Other	3%	52,954	46,148	-12.9%	673,606	658,735	-2.2%

Degree Days are a weather indicator. Heating and cooling degree days are the cumulative monthly difference in daily temperature from a reference temperature of 65 degrees (designated as the temperature at which neither heating nor cooling is needed). A dial value > 1 means greater energy needs as compared to the prior period. (In spring and fall, small year-to-year changes in degree days can appear large on the dial without having a major impact on energy use.) Even when weather causes increases in energy usage, agencies should still aim to drive down usage.

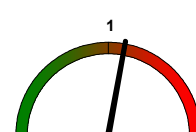
Degree Days	Heating	Cooling
YTD Current FY	4,200	1,224
YTD Prior FY	3,762	1,313
May FY17	165	55
May FY16	159	100



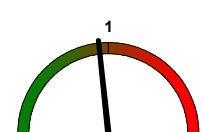
Monthly HDD Ratio: Current Yr/Prior Yr



Monthly CDD Ratio: Current Yr/Prior Yr



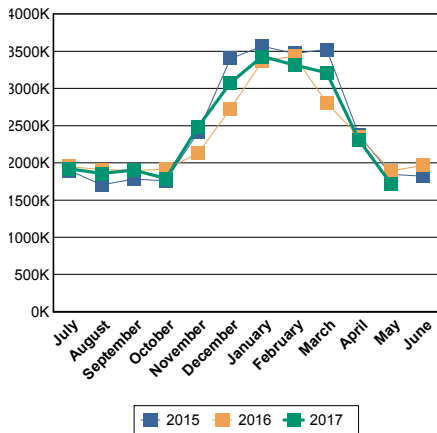
YTD HDD Ratio: Current Yr/Prior Yr



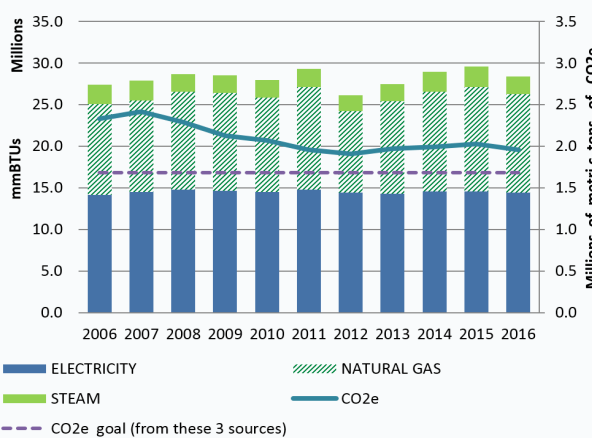
YTD CDD Ratio: Current Yr/Prior Yr

Energy Dashboard Report - June 2017

Citywide Utility Energy Usage in BTU



City Government Energy Use, by Fiscal Year



• Bar chart covers utility energy for City government buildings and operations. Utility energy data are from citywide billings handled through DCAS.

• FY16 energy total was 28.4 million mmBTUs. This resulted in 1.96 million metric tons of CO2e based on recent statewide emissions factors.

• Approximate target for annual CO2e from city government operations' utility energy sources: 1.69 million metric tons by 2025. [Target is based on applying 35% goal to Building, Street & Traffic Lighting, and Water Supply and Wastewater sectors of City government operations. For more information and updates, see the City's annual Inventory of Greenhouse Gas Emissions.]

Energy Usage (From Utility Purchases): Data below are from monthly utility bills for electricity, natural gas, and steam. Usage is for the month and fiscal year-to-date indicated, expressed as mmBTUs (millions of British thermal units). Late billings may impact totals for selected agencies.

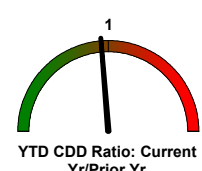
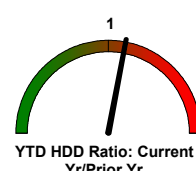
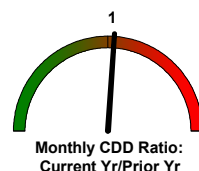
Usage is reported as a group for libraries, cultural institutions, and smaller City agencies (Other). Relative size is % of FY16 total. More detailed reports, including Citywide CORE and Agency CORE reports, are sent to agency energy liaison officers and are available through the DCAS EC3 energy reporting system.

* In millions of Btus (mmBtus) for electricity, natural gas, and steam

	Relative Size [% of Total]	June			Year To Date		
		FY 16	FY 17	-- % Change --	FY 16	FY 17	--% Change --
CITY GOVERNMENT TOTAL		1,966,038	1,786,709	-9.1%	28,346,233	28,835,506	1.7%
Department of Education	22%	421,204	393,726	-6.5%	6,579,182	7,047,581	7.1%
Health and Hospitals Corporation	13%	290,277	269,711	-7.1%	3,744,581	3,730,868	-0.4%
Department of Environmental Protection	12%	274,844	260,258	-5.3%	3,539,271	3,785,136	6.9%
City University of New York - Senior Colleges	9%	177,811	162,764	-8.5%	2,555,657	2,580,000	1.0%
Department of Correction	6%	118,871	85,494	-28.1%	1,767,569	1,529,026	-13.5%
Department of Citywide Administrative Services	4%	73,180	62,718	-14.3%	1,166,788	1,170,535	0.3%
Department Of Transportation	4%	83,872	89,835	7.1%	1,172,799	1,193,197	1.7%
Department of Sanitation	4%	40,716	34,569	-15.1%	1,063,203	1,105,105	3.9%
City University of New York - Community Colleges	3%	63,693	48,996	-23.1%	867,419	773,196	-10.9%
Police Department	3%	56,682	46,206	-18.5%	826,241	843,447	2.1%
Department of Parks and Recreation	2%	28,455	27,220	-4.3%	517,551	536,300	3.6%
Fire Department	1%	27,913	25,491	-8.7%	421,901	447,962	6.2%
Department of Homeless Services	1%	18,398	16,398	-10.9%	341,637	344,694	0.9%
Human Resources Administration	1%	23,345	21,603	-7.5%	272,168	281,932	3.6%
Department Of Health and Mental Hygiene	1%	24,403	21,003	-13.9%	282,181	278,089	-1.5%
Administration for Children's Services	1%	19,908	18,312	-8.0%	257,842	261,444	1.4%
Cultural Institutions	7%	128,954	117,451	-8.9%	1,769,405	1,724,213	-2.6%
Libraries	2%	35,116	33,546	-4.5%	468,847	492,740	5.1%
Other	3%	58,397	51,407	-12.0%	731,991	710,040	-3.0%

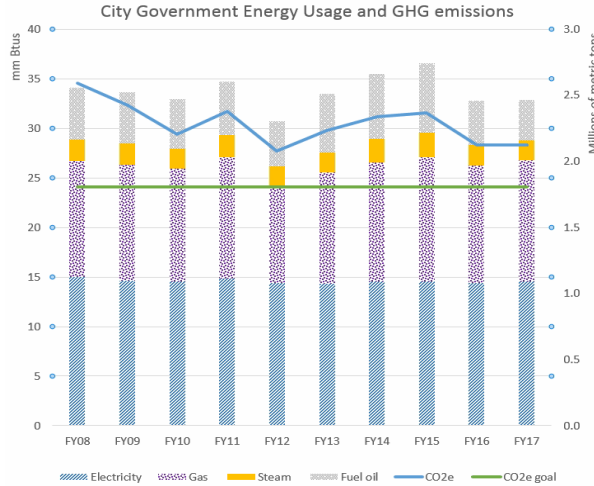
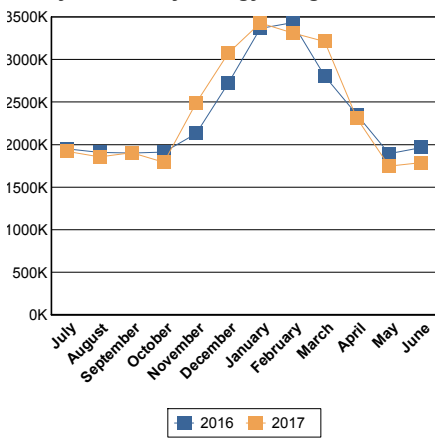
Degree Days are a weather indicator. Heating and cooling degree days are the cumulative monthly difference in daily temperature from a reference temperature of 65 degrees (designated as the temperature at which neither heating nor cooling is needed). A dial value > 1 means greater energy needs as compared to the prior period. (In spring and fall, small year-to-year changes in degree days can appear large on the dial without having a major impact on energy use.) Even when weather causes increases in energy usage, agencies should still aim to drive down usage.

Degree Days	Heating	Cooling
YTD Current FY	4,224	1,466
YTD Prior FY	3,769	1,545
June FY17	24	242
June FY16	7	232



Energy Dashboard Report - July 2017

Citywide Utility Energy Usage in BTU



- Bar chart covers utility energy + fuel oil for City government buildings and operations (excluding transportation). Utility energy data are from citywide billings handled through DCAS.
- FY17 energy total was 32.9 million mmBtus and 2.1 million metric tons of CO2e (for utility energy alone: 28.8 million mmBtus and 1.8 million metric tons of CO2e).
- Target for annual CO2e (utility energy + fuel oil): 1.8 million metric tons by 2025. [Target applies 35% GHG reduction goal to FY06 emissions from energy use in Building, Street & Traffic Lighting, and Water Supply and Wastewater sectors of City government operations. For more information and updates, see the City's annual Inventory of Greenhouse Gas Emissions.]

Energy Usage (From Utility Purchases): Data below are from monthly utility bills for electricity, natural gas, and steam. Usage is for the month and fiscal year-to-date indicated, expressed as mmBtus (millions of British thermal units). Late billings may impact totals for selected agencies.

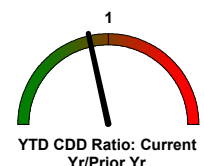
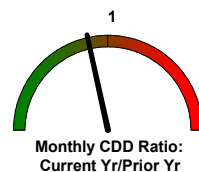
Usage is reported as a group for libraries, cultural institutions, and smaller City agencies (Other). Relative size is % of FY17 total. More detailed reports, including Citywide CORE and Agency CORE reports, are sent to agency energy liaison officers and are available through the DCAS EC3 energy reporting system.

* In millions of Btus (mmBtus) for electricity, natural gas, and steam

	Relative Size [% of Total]	July			Year To Date		
		FY 17	FY 18	-- % Change --	FY 17	FY 18	--% Change --
CITY GOVERNMENT TOTAL		1,923,620	1,776,853	-7.6%	1,923,620	1,776,853	-7.6%
Department of Education	23.8%	372,981	365,001	-2.1%	372,981	365,001	-2.1%
Health and Hospitals Corporation	12.9%	299,124	276,072	-7.7%	299,124	276,072	-7.7%
Department of Environmental Protection	13.1%	257,213	247,418	-3.8%	257,213	247,418	-3.8%
City University of New York - Senior Colleges	8.9%	189,169	165,403	-12.6%	189,169	165,403	-12.6%
Department of Correction	5.3%	117,425	84,709	-27.9%	117,425	84,709	-27.9%
Department of Citywide Administrative Services	4.1%	76,635	71,158	-7.1%	76,635	71,158	-7.1%
Department Of Transportation	4.1%	82,292	82,441	0.2%	82,292	82,441	0.2%
Department of Sanitation	3.8%	38,324	36,821	-3.9%	38,324	36,821	-3.9%
City University of New York - Community Colleges	2.7%	67,229	51,913	-22.8%	67,229	51,913	-22.8%
Police Department	2.9%	56,803	50,911	-10.4%	56,803	50,911	-10.4%
Department of Parks and Recreation	1.9%	28,065	26,661	-5.0%	28,065	26,661	-5.0%
Fire Department	1.6%	28,955	27,257	-5.9%	28,955	27,257	-5.9%
Department Of Health and Mental Hygiene	1.0%	27,946	25,832	-7.6%	27,946	25,832	-7.6%
Administration for Children's Services	0.9%	20,759	20,336	-2.0%	20,759	20,336	-2.0%
Cultural Institutions	6.0%	126,166	116,607	-7.6%	126,166	116,607	-7.6%
Libraries	1.7%	37,337	36,443	-2.4%	37,337	36,443	-2.4%
Other	3.1%	55,935	52,731	-5.7%	55,935	52,731	-5.7%
Department of Social Services	2.2%	41,263	39,140	-5.1%	41,263	39,140	-5.1%

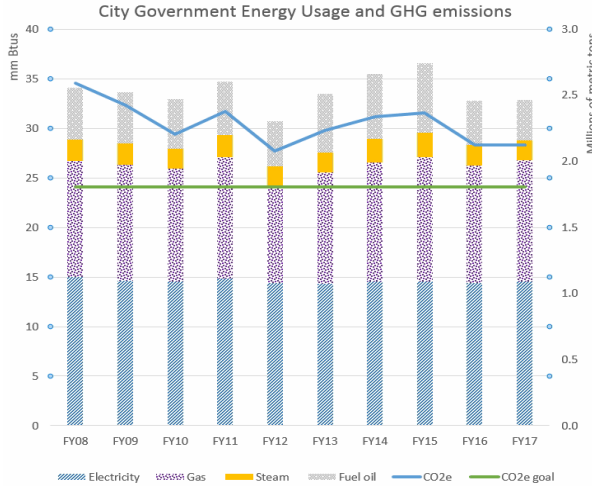
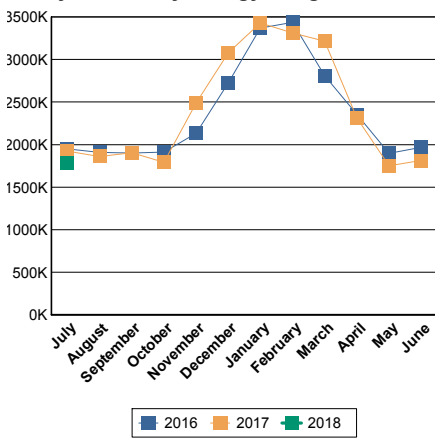
Degree Days are a weather indicator. Heating and cooling degree days are the cumulative monthly difference in daily temperature from a reference temperature of 65 degrees (designated as the temperature at which neither heating nor cooling is needed). A dial value > 1 means greater energy needs as compared to the prior period. (In spring and fall, small year-to-year changes in degree days can appear large on the dial without having a major impact on energy use.) Even when weather causes increases in energy usage, agencies should still aim to drive down usage.

Degree Days	Heating	Cooling
YTD Current FY	0	372
YTD Prior FY	0	432
July FY18	0	372
July FY17	0	432



Energy Dashboard Report - August 2017

Citywide Utility Energy Usage in BTU



- Bar chart covers utility energy + fuel oil for City government buildings and operations (excluding transportation). Utility energy data are from citywide billings handled through DCAS.
- FY17 energy total was 32.9 million mmBtus and 2.1 million metric tons of CO2e (for utility energy alone: 28.8 million mmBtus and 1.8 million metric tons of CO2e).
- Target for annual CO2e (utility energy + fuel oil): 1.8 million metric tons by 2025. [Target applies 35% GHG reduction goal to FY06 emissions from energy use in Building, Street & Traffic Lighting, and Water Supply and Wastewater sectors of City government operations. For more information and updates, see the City's annual Inventory of Greenhouse Gas Emissions.]

Energy Usage (From Utility Purchases): Data below are from monthly utility bills for electricity, natural gas, and steam. Usage is for the month and fiscal year-to-date indicated, expressed as mmBtus (millions of British thermal units). Late billings may impact totals for selected agencies.

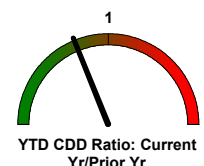
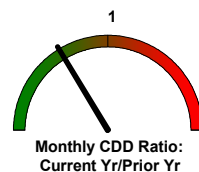
Usage is reported as a group for libraries, cultural institutions, and smaller City agencies (Other). Relative size is % of FY17 total. More detailed reports, including Citywide CORE and Agency CORE reports, are sent to agency energy liaison officers and are available through the DCAS EC3 energy reporting system.

* In millions of Btus (mmBtus) for electricity, natural gas, and steam

	Relative Size [% of Total]	August			Year To Date		
		FY 17	FY 18	-- % Change --	FY 17	FY 18	--% Change --
CITY GOVERNMENT TOTAL		1,859,687	1,692,537	-9.0%	3,783,273	3,503,998	-7.4%
Department of Education	23.8%	365,644	338,289	-7.5%	738,605	698,943	-5.4%
Health and Hospitals Corporation	12.9%	299,145	255,529	-14.6%	598,269	546,121	-8.7%
Department of Environmental Protection	13.1%	250,073	239,684	-4.2%	507,287	487,532	-3.9%
City University of New York - Senior Colleges	8.9%	173,221	170,966	-1.3%	362,389	356,049	-1.7%
Department of Correction	5.3%	89,435	72,820	-18.6%	206,860	155,562	-24.8%
Department of Citywide Administrative Services	4.1%	76,868	68,663	-10.7%	153,503	144,542	-5.8%
Department Of Transportation	4.1%	91,814	90,401	-1.5%	174,100	172,982	-0.6%
Department of Sanitation	3.8%	37,291	32,722	-12.3%	75,615	69,597	-8.0%
City University of New York - Community Colleges	2.7%	57,381	49,709	-13.4%	124,610	101,516	-18.5%
Police Department	2.9%	56,357	46,653	-17.2%	113,176	97,825	-13.6%
Department of Parks and Recreation	1.9%	27,817	26,561	-4.5%	55,882	53,370	-4.5%
Fire Department	1.6%	27,445	25,244	-8.0%	56,394	52,463	-7.0%
Department Of Health and Mental Hygiene	1.0%	29,788	23,115	-22.4%	57,734	48,981	-15.2%
Administration for Children's Services	0.9%	20,853	20,140	-3.4%	41,599	40,738	-2.1%
Cultural Institutions	6.0%	122,931	111,064	-9.7%	249,093	229,229	-8.0%
Libraries	1.7%	38,287	33,763	-11.8%	75,624	69,813	-7.7%
Other	3.1%	55,330	51,040	-7.8%	111,264	103,479	-7.0%
Department of Social Services	2.2%	40,007	36,174	-9.6%	81,269	75,258	-7.4%

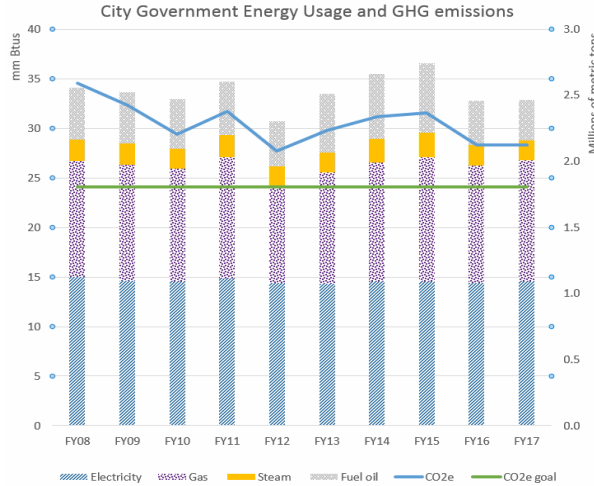
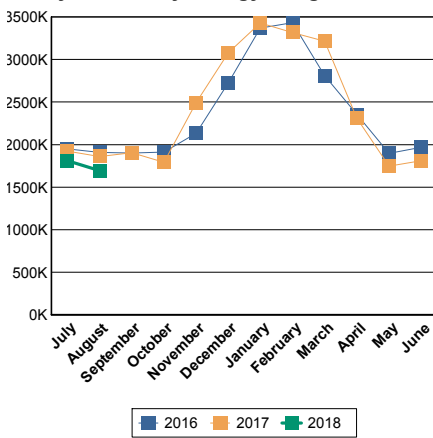
Degree Days are a weather indicator. Heating and cooling degree days are the cumulative monthly difference in daily temperature from a reference temperature of 65 degrees (designated as the temperature at which neither heating nor cooling is needed). A dial value > 1 means greater energy needs as compared to the prior period. (In spring and fall, small year-to-year changes in degree days can appear large on the dial without having a major impact on energy use.) Even when weather causes increases in energy usage, agencies should still aim to drive down usage.

Degree Days	Heating	Cooling
YTD Current FY	0	663
YTD Prior FY	0	878
August FY18	0	291
August FY17	0	446



Energy Dashboard Report - September 2017

Citywide Utility Energy Usage in BTU



- Bar chart covers utility energy + fuel oil for City government buildings and operations (excluding transportation). Utility energy data are from citywide billings handled through DCAS.
- FY17 energy total was 32.9 million mmBtus and 2.1 million metric tons of CO2e (for utility energy alone: 28.8 million mmBtus and 1.8 million metric tons of CO2e).
- Target for annual CO2e (utility energy + fuel oil): 1.8 million metric tons by 2025. [Target applies 35% GHG reduction goal to FY06 emissions from energy use in Building, Street & Traffic Lighting, and Water Supply and Wastewater sectors of City government operations. For more information and updates, see the City's annual Inventory of Greenhouse Gas Emissions.]

Energy Usage (From Utility Purchases): Data below are from monthly utility bills for electricity, natural gas, and steam. Usage is for the month and fiscal year-to-date indicated, expressed as mmBtus (millions of British thermal units). Late billings may impact totals for selected agencies.

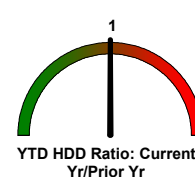
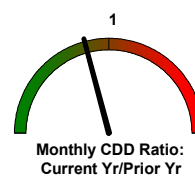
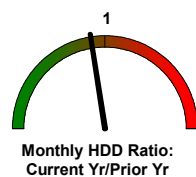
Usage is reported as a group for libraries, cultural institutions, and smaller City agencies (Other). Relative size is % of FY17 total. More detailed reports, including Citywide CORE and Agency CORE reports, are sent to agency energy liaison officers and are available through the DCAS EC3 energy reporting system.

* In millions of Btus (mmBtus) for electricity, natural gas, and steam

	Relative Size [% of Total]	September			Year To Date		
		FY 17	FY 18	-- % Change --	FY 17	FY 18	--% Change --
CITY GOVERNMENT TOTAL		1,906,028	1,750,033	-8.2%	5,689,638	5,300,420	-6.8%
Department of Education	23.8%	406,727	356,851	-12.3%	1,145,122	1,052,646	-8.1%
Health and Hospitals Corporation	12.9%	287,918	255,648	-11.2%	886,172	814,785	-8.1%
Department of Environmental Protection	13.1%	269,974	255,220	-5.5%	777,261	770,080	-0.9%
City University of New York - Senior Colleges	8.9%	170,692	187,338	9.8%	533,175	543,036	1.8%
Department of Correction	5.3%	83,271	73,738	-11.4%	290,131	218,092	-24.8%
Department of Citywide Administrative Services	4.1%	75,423	64,642	-14.3%	228,926	212,705	-7.1%
Department Of Transportation	4.1%	97,717	94,298	-3.5%	271,831	267,357	-1.6%
Department of Sanitation	3.8%	37,051	34,082	-8.0%	112,667	103,441	-8.2%
City University of New York - Community Colleges	2.7%	63,286	48,311	-23.7%	187,896	151,262	-19.5%
Police Department	2.9%	54,570	46,745	-14.3%	167,633	143,554	-14.4%
Department of Parks and Recreation	1.9%	27,264	25,091	-8.0%	83,533	79,112	-5.3%
Fire Department	1.6%	28,089	25,671	-8.6%	84,659	77,942	-7.9%
Department Of Health and Mental Hygiene	1.0%	25,141	20,751	-17.5%	82,875	69,693	-15.9%
Administration for Children's Services	0.9%	20,550	19,349	-5.8%	62,149	59,859	-3.7%
Cultural Institutions	6.0%	125,887	121,420	-3.5%	374,984	367,583	-2.0%
Libraries	1.7%	35,815	33,598	-6.2%	111,439	103,206	-7.4%
Other	3.1%	56,822	51,716	-9.0%	168,088	155,528	-7.5%
Department of Social Services	2.2%	39,830	35,564	-10.7%	121,099	110,537	-8.7%

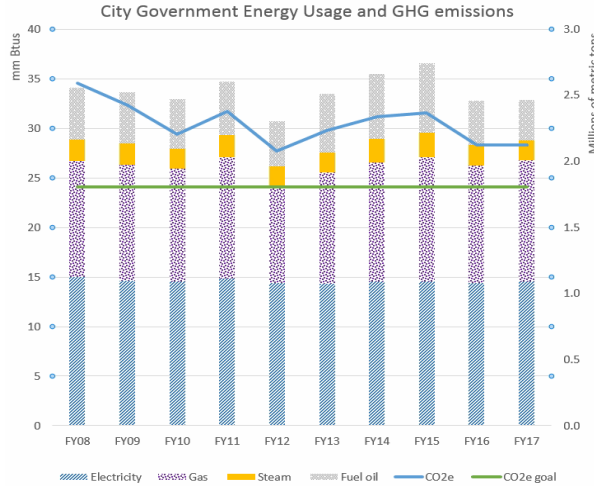
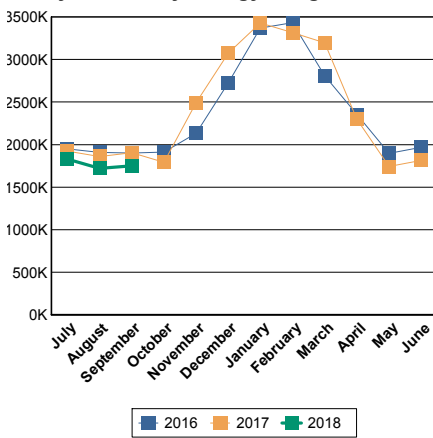
Degree Days are a weather indicator. Heating and cooling degree days are the cumulative monthly difference in daily temperature from a reference temperature of 65 degrees (designated as the temperature at which neither heating nor cooling is needed). A dial value > 1 means greater energy needs as compared to the prior period. (In spring and fall, small year-to-year changes in degree days can appear large on the dial without having a major impact on energy use.) Even when weather causes increases in energy usage, agencies should still aim to drive down usage.

Degree Days	Heating	Cooling
YTD Current FY	17	853
YTD Prior FY	17	1,106
September FY18	17	190
September FY17	17	228



Energy Dashboard Report - October 2017

Citywide Utility Energy Usage in BTU



- Bar chart covers utility energy + fuel oil for City government buildings and operations (excluding transportation). Utility energy data are from citywide billings handled through DCAS.
- FY17 energy total was 32.9 million mmBtus and 2.1 million metric tons of CO2e (for utility energy alone: 28.8 million mmBtus and 1.8 million metric tons of CO2e).
- Target for annual CO2e (utility energy + fuel oil): 1.8 million metric tons by 2025. [Target applies 35% GHG reduction goal to FY06 emissions from energy use in Building, Street & Traffic Lighting, and Water Supply and Wastewater sectors of City government operations. For more information and updates, see the City's annual Inventory of Greenhouse Gas Emissions.]

Energy Usage (From Utility Purchases): Data below are from monthly utility bills for electricity, natural gas, and steam. Usage is for the month and fiscal year-to-date indicated, expressed as mmBtus (millions of British thermal units). Late billings may impact totals for selected agencies.

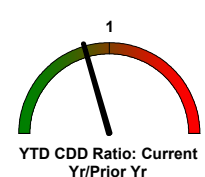
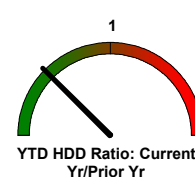
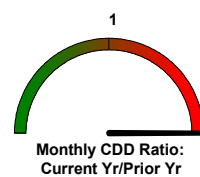
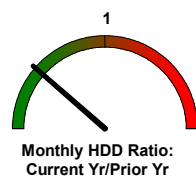
Usage is reported as a group for libraries, cultural institutions, and smaller City agencies (Other). Relative size is % of FY17 total. More detailed reports, including Citywide CORE and Agency CORE reports, are sent to agency energy liaison officers and are available through the DCAS EC3 energy reporting system.

* In millions of Btus (mmBtus) for electricity, natural gas, and steam

	Relative Size [% of Total]	October			Year To Date		
		FY 17	FY 18	-- % Change --	FY 17	FY 18	--% Change --
CITY GOVERNMENT TOTAL		1,791,420	1,678,928	-6.3%	7,479,567	6,996,806	-6.5%
Department of Education	23.8%	353,624	372,673	5.4%	1,498,202	1,425,590	-4.8%
Health and Hospitals Corporation	12.9%	257,810	243,910	-5.4%	1,143,981	1,072,146	-6.3%
Department of Environmental Protection	13.1%	260,274	245,024	-5.9%	1,037,535	1,011,991	-2.5%
City University of New York - Senior Colleges	8.9%	204,746	170,778	-16.6%	737,921	713,475	-3.3%
Department of Correction	5.3%	92,918	80,842	-13.0%	383,049	298,934	-22.0%
Department of Citywide Administrative Services	4.1%	62,999	59,949	-4.8%	291,925	275,257	-5.7%
Department Of Transportation	4.1%	103,302	96,785	-6.3%	375,016	363,896	-3.0%
Department of Sanitation	3.8%	39,123	31,779	-18.8%	151,789	134,866	-11.1%
City University of New York - Community Colleges	2.7%	45,016	44,081	-2.1%	232,912	195,793	-15.9%
Police Department	2.9%	46,756	45,150	-3.4%	214,217	188,546	-12.0%
Department of Parks and Recreation	1.9%	26,221	23,237	-11.4%	109,673	102,616	-6.4%
Fire Department	1.6%	22,695	23,129	1.9%	107,354	100,739	-6.2%
Department Of Health and Mental Hygiene	1.0%	16,973	17,005	0.2%	99,848	88,221	-11.6%
Administration for Children's Services	0.9%	15,400	17,410	13.1%	77,548	77,130	-0.5%
Cultural Institutions	6.0%	127,266	95,376	-25.1%	502,251	465,495	-7.3%
Libraries	1.7%	28,748	24,747	-13.9%	140,186	126,525	-9.7%
Other	3.1%	52,031	52,122	0.2%	220,118	209,587	-4.8%
Department of Social Services	2.2%	35,519	34,929	-1.7%	156,040	146,001	-6.4%

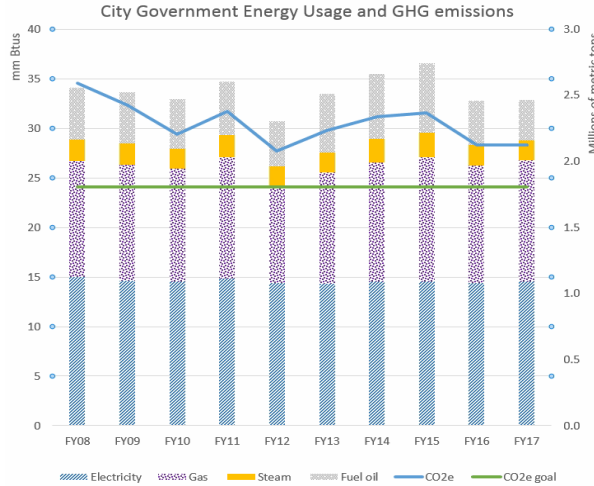
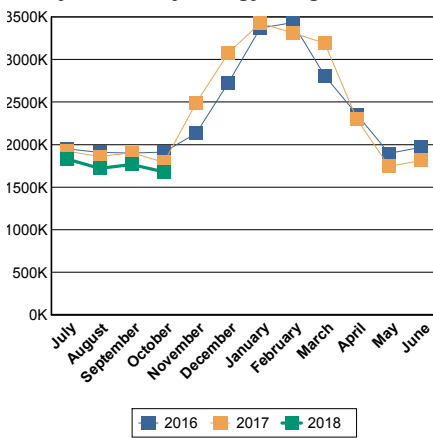
Degree Days are a weather indicator. Heating and cooling degree days are the cumulative monthly difference in daily temperature from a reference temperature of 65 degrees (designated as the temperature at which neither heating nor cooling is needed). A dial value > 1 means greater energy needs as compared to the prior period. (In spring and fall, small year-to-year changes in degree days can appear large on the dial without having a major impact on energy use.) Even when weather causes increases in energy usage, agencies should still aim to drive down usage.

Degree Days	Heating	Cooling
YTD Current FY	116	933
YTD Prior FY	234	1,135
October FY18	99	80
October FY17	217	29



Energy Dashboard Report - November 2017

Citywide Utility Energy Usage in BTU



- Bar chart covers utility energy + fuel oil for City government buildings and operations (excluding transportation). Utility energy data are from citywide billings handled through DCAS.
- FY17 energy total was 32.9 million mmBtus and 2.1 million metric tons of CO2e (for utility energy alone: 28.8 million mmBtus and 1.8 million metric tons of CO2e).
- Target for annual CO2e (utility energy + fuel oil): 1.8 million metric tons by 2025. [Target applies 35% GHG reduction goal to FY06 emissions from energy use in Building, Street & Traffic Lighting, and Water Supply and Wastewater sectors of City government operations. For more information and updates, see the City's annual Inventory of Greenhouse Gas Emissions.]

Energy Usage (From Utility Purchases): Data below are from monthly utility bills for electricity, natural gas, and steam. Usage is for the month and fiscal year-to-date indicated, expressed as mmBtus (millions of British thermal units). Late billings may impact totals for selected agencies.

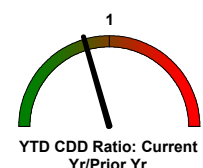
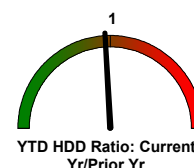
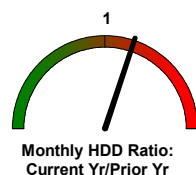
Usage is reported as a group for libraries, cultural institutions, and smaller City agencies (Other). Relative size is % of FY17 total. More detailed reports, including Citywide CORE and Agency CORE reports, are sent to agency energy liaison officers and are available through the DCAS EC3 energy reporting system.

* In millions of Btus (mmBtus) for electricity, natural gas, and steam

	Relative Size	November			Year To Date		
	[% of Total]	FY 17	FY 18	-- % Change --	FY 17	FY 18	--% Change --
CITY GOVERNMENT TOTAL		2,483,104	2,423,468	-2.4%	9,938,421	9,433,045	-5.1%
Department of Education	23.8%	609,201	600,315	-1.5%	2,107,402	2,022,534	-4.0%
Health and Hospitals Corporation	12.9%	306,715	278,185	-9.3%	1,450,692	1,365,201	-5.9%
Department of Environmental Protection	13.1%	331,047	308,389	-6.8%	1,368,582	1,320,206	-3.5%
City University of New York - Senior Colleges	8.9%	225,197	228,144	1.3%	963,118	939,362	-2.5%
Department of Correction	5.3%	132,461	167,956	26.8%	515,511	465,347	-9.7%
Department of Citywide Administrative Services	4.1%	98,066	93,393	-4.8%	389,991	371,854	-4.7%
Department Of Transportation	4.1%	106,482	98,992	-7.0%	457,201	439,669	-3.8%
Department of Sanitation	3.8%	102,040	91,949	-9.9%	253,829	227,191	-10.5%
City University of New York - Community Colleges	2.7%	71,823	73,402	2.2%	304,735	266,662	-12.5%
Police Department	2.9%	70,838	66,974	-5.5%	285,055	255,604	-10.3%
Department of Parks and Recreation	1.9%	47,018	45,662	-2.9%	156,690	149,763	-4.4%
Fire Department	1.6%	32,613	34,334	5.3%	139,967	134,252	-4.1%
Department Of Health and Mental Hygiene	1.0%	18,631	18,815	1.0%	118,479	106,753	-9.9%
Administration for Children's Services	0.9%	19,593	20,427	4.3%	97,141	97,569	0.4%
Cultural Institutions	6.0%	157,036	152,400	-3.0%	659,287	642,842	-2.5%
Libraries	1.7%	39,099	32,280	-17.4%	179,285	158,984	-11.3%
Other	3.1%	61,033	59,939	-1.8%	281,206	271,224	-3.5%
Department of Social Services	2.2%	54,210	51,912	-4.2%	210,250	198,028	-5.8%

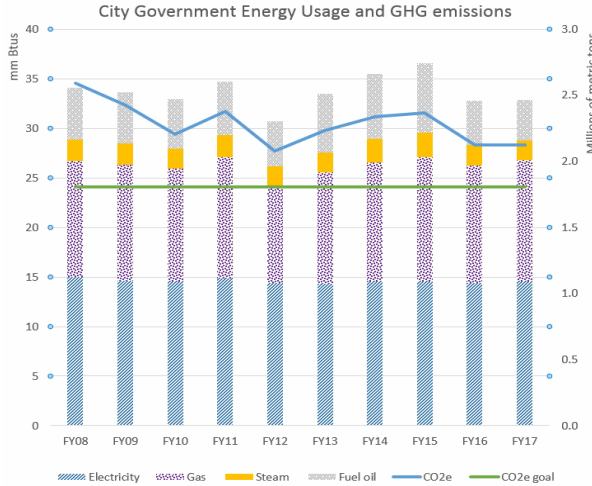
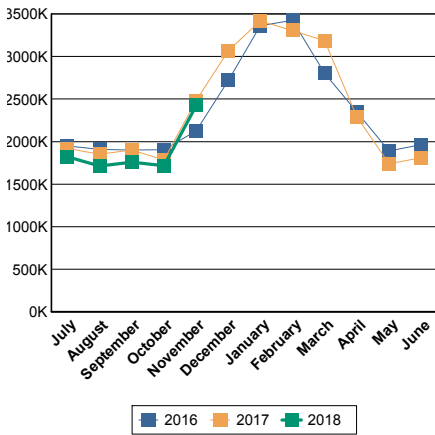
Degree Days are a weather indicator. Heating and cooling degree days are the cumulative monthly difference in daily temperature from a reference temperature of 65 degrees (designated as the temperature at which neither heating nor cooling is needed). A dial value > 1 means greater energy needs as compared to the prior period. (In spring and fall, small year-to-year changes in degree days can appear large on the dial without having a major impact on energy use.) Even when weather causes increases in energy usage, agencies should still aim to drive down usage.

Degree Days	Heating	Cooling
YTD Current FY	662	933
YTD Prior FY	687	1,135
November FY18	546	0
November FY17	453	0



Energy Dashboard Report - December 2017

Citywide Utility Energy Usage in BTU



- Bar chart covers utility energy + fuel oil for City government buildings and operations (excluding transportation). Utility energy data are from citywide billings handled through DCAS.
- FY17 energy total was 32.9 million mmBtus and 2.1 million metric tons of CO2e (for utility energy alone: 28.8 million mmBtus and 1.8 million metric tons of CO2e).
- Target for annual CO2e (utility energy + fuel oil): 1.8 million metric tons by 2025. [Target applies 35% GHG reduction goal to FY06 emissions from energy use in Building, Street & Traffic Lighting, and Water Supply and Wastewater sectors of City government operations. For more information and updates, see the City's annual Inventory of Greenhouse Gas Emissions.]

Energy Usage (From Utility Purchases): Data below are from monthly utility bills for electricity, natural gas, and steam. Usage is for the month and fiscal year-to-date indicated, expressed as mmBtus (millions of British thermal units). Late billings may impact totals for selected agencies.

Usage is reported as a group for libraries, cultural institutions, and smaller City agencies (Other). Relative size is % of FY17 total. More detailed reports, including Citywide CORE and Agency CORE reports, are sent to agency energy liaison officers and are available through the DCAS EC3 energy reporting system.

* In millions of Btus (mmBtus) for electricity, natural gas, and steam

	Relative Size [% of Total]	December			Year To Date		
		FY 17	FY 18	-- % Change --	FY 17	FY 18	--% Change --
CITY GOVERNMENT TOTAL		3,062,368	3,033,875	-0.9%	12,980,221	12,543,059	-3.4%
Department of Education	23.8%	835,130	852,489	2.1%	2,941,895	2,886,497	-1.9%
Health and Hospitals Corporation	12.9%	332,214	322,589	-2.9%	1,782,906	1,712,352	-4.0%
Department of Environmental Protection	13.1%	370,334	345,209	-6.8%	1,738,913	1,691,837	-2.7%
City University of New York - Senior Colleges	8.9%	271,203	282,105	4.0%	1,234,321	1,221,201	-1.1%
Department of Correction	5.3%	166,098	168,351	1.4%	681,609	632,648	-7.2%
Department of Citywide Administrative Services	4.1%	137,730	119,490	-13.2%	528,255	506,633	-4.1%
Department Of Transportation	4.1%	108,946	125,063	14.8%	546,301	553,050	1.2%
Department of Sanitation	3.8%	151,597	144,113	-4.9%	405,426	372,312	-8.2%
City University of New York - Community Colleges	2.7%	88,155	85,702	-2.8%	392,889	352,000	-10.4%
Police Department	2.9%	91,201	88,413	-3.1%	376,256	344,720	-8.4%
Department of Parks and Recreation	1.9%	62,208	62,831	1.0%	218,816	212,916	-2.7%
Fire Department	1.6%	47,646	50,729	6.5%	187,613	185,284	-1.2%
Department Of Health and Mental Hygiene	1.0%	24,542	24,010	-2.2%	143,021	132,678	-7.2%
Administration for Children's Services	0.9%	25,372	26,545	4.6%	122,513	123,731	1.0%
Cultural Institutions	6.0%	168,773	163,743	-3.0%	828,060	814,845	-1.6%
Libraries	1.7%	47,401	45,406	-4.2%	226,687	204,733	-9.7%
Other	3.1%	66,270	64,407	-2.8%	346,942	333,703	-3.8%
Department of Social Services	2.2%	67,547	62,679	-7.2%	277,797	261,918	-5.7%

Degree Days are a weather indicator. Heating and cooling degree days are the cumulative monthly difference in daily temperature from a reference temperature of 65 degrees (designated as the temperature at which neither heating nor cooling is needed). A dial value > 1 means greater energy needs as compared to the prior period. (In spring and fall, small year-to-year changes in degree days can appear large on the dial without having a major impact on energy use.) Even when weather causes increases in energy usage, agencies should still aim to drive down usage.

Degree Days	Heating	Cooling
YTD Current FY	1,582	933
YTD Prior FY	1,505	1,135
December FY18	920	0
December FY17	818	0

