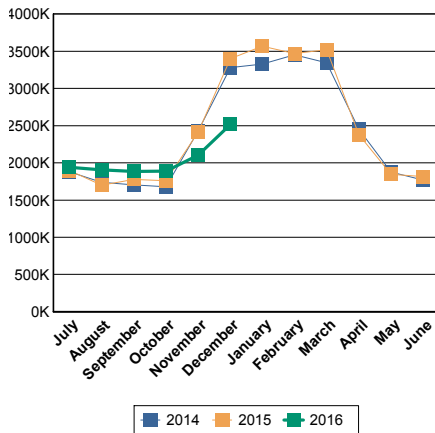


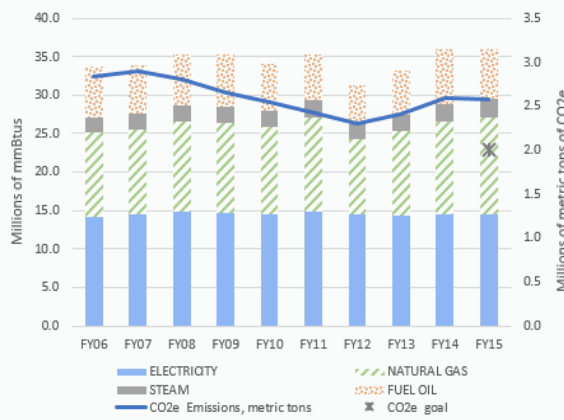


Energy Dashboard Report - January 2016

Citywide Utility Energy Usage in BTU



Energy Usage and GHG Emissions, City Gov't*



• Bar chart covers utility energy, and adds heating fuel oil, for City government buildings and operations. Utility energy data are from citywide billings handled through DCAS; heating fuel oil data are from purchases through City contracts. Chart does NOT include methane emissions and emissions for vehicle fuel oil.

• FY15 energy total was 36.1 million mmBTUs. This resulted in 2.6 million metric tons of CO2e based on recent statewide emissions factors.

• Approximate target for annual CO2e from city government operations' utility energy sources and building fuel oil: 2.0 million metric tons by 2025. [Target is based on applying 35% goal to Building, Street & Traffic Lighting, and Water Supply and Wastewater sectors of City government operations. For more information and updates, see the City's annual Inventory of Greenhouse Gas Emissions.]

Energy Usage (From Utility Purchases): Data below are from monthly utility bills for electricity, natural gas, and steam. Usage is for the month and fiscal year-to-date indicated, expressed as mmBTUs (millions of British thermal units). Late billings may impact totals for selected agencies.

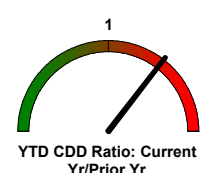
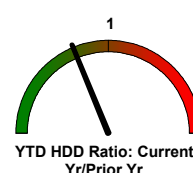
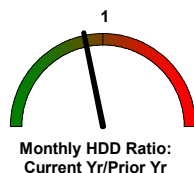
Usage is reported as a group for libraries, cultural institutions, and smaller City agencies (Other). Relative size is % of FY15 total. More detailed reports, including Citywide CORE and Agency CORE reports, are sent to agency energy liaison officers and are available through the DCAS EC3 energy reporting system.

* In millions of Btus (mmBtus) for electricity, natural gas, and steam

	Relative Size [% of Total]	January			Year To Date		
		FY 15	FY 16	-- % Change --	FY 15	FY 16	--% Change --
CITY GOVERNMENT TOTAL		3,567,069	3,219,001	-9.8%	16,513,898	15,643,607	-5.3%
Department of Education	24%	980,716	889,620	-9.3%	3,910,034	3,493,969	-10.6%
Health and Hospitals Corporation	12%	388,205	300,626	-22.6%	2,173,865	2,034,849	-6.4%
Department of Environmental Protection	12%	355,080	338,839	-4.6%	1,944,889	1,939,680	-0.3%
City University of New York - Senior Colleges	9%	340,996	308,731	-9.5%	1,528,281	1,485,710	-2.8%
Department of Correction	6%	154,489	221,471	43.4%	845,273	1,004,918	18.9%
Department of Citywide Administrative Services	5%	178,593	141,345	-20.9%	750,674	646,075	-13.9%
Department Of Transportation	4%	132,316	111,643	-15.6%	716,071	712,996	-0.4%
Department of Sanitation	4%	166,956	152,200	-8.8%	511,536	505,736	-1.1%
City University of New York - Community Colleges	3%	117,377	109,033	-7.1%	545,080	501,772	-7.9%
Police Department	3%	110,951	99,190	-10.6%	475,632	442,181	-7.0%
Department of Parks and Recreation	2%	80,835	67,638	-16.3%	302,419	282,031	-6.7%
Fire Department	2%	62,089	53,716	-13.5%	249,241	224,713	-9.8%
Department of Homeless Services	1%	50,827	45,281	-10.9%	196,254	175,898	-10.4%
Human Resources Administration	1%	37,899	26,778	-29.3%	219,117	155,596	-29.0%
Department Of Health and Mental Hygiene	1%	31,159	26,151	-16.1%	185,019	171,415	-7.4%
Administration for Children's Services	1%	32,336	27,341	-15.4%	162,036	147,690	-8.9%
Cultural Institutions	6%	200,901	178,634	-11.1%	1,057,290	1,009,140	-4.6%
Libraries	2%	61,900	53,812	-13.1%	286,808	265,562	-7.4%
Other	4%	83,444	66,952	-19.8%	454,379	443,674	-2.4%

Degree Days are a weather indicator. Heating and cooling degree days are the cumulative monthly difference in daily temperature from a reference temperature of 65 degrees (designated as the temperature at which neither heating nor cooling is needed). A dial value > 1 means greater energy needs as compared to the prior period. (In spring and fall, small year-to-year changes in degree days can appear large on the dial without having a major impact on energy use.) Even when weather causes increases in energy usage, agencies should still aim to drive down usage.

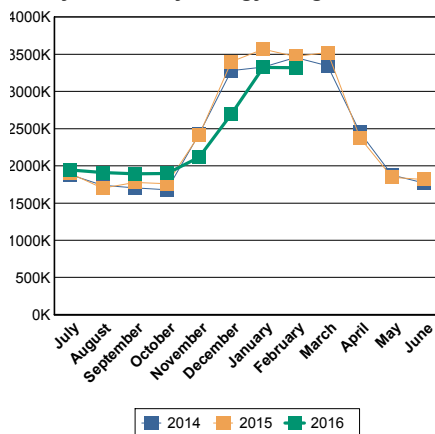
Degree Days	Heating	Cooling
YTD Current FY	1,965	1,194
YTD Prior FY	2,616	841
January FY16	940	0
January FY15	1,080	0



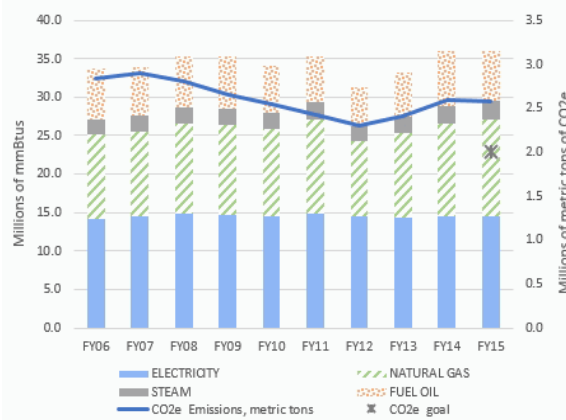


Energy Dashboard Report - February 2016

Citywide Utility Energy Usage in BTU



Energy Usage and GHG Emissions, City Gov't*



• Bar chart covers utility energy, and adds heating fuel oil, for City government buildings and operations. Utility energy data are from citywide billings handled through DCAS; heating fuel oil data are from purchases through City contracts. Chart does NOT include methane emissions and emissions for vehicle fuel oil.

• FY15 energy total was 36.1 million mmBTUs. This resulted in 2.6 million metric tons of CO2e based on recent statewide emissions factors.

• Approximate target for annual CO2e from city government operations' utility energy sources and building fuel oil: 2.0 million metric tons by 2025. [Target is based on applying 35% goal to Building, Street & Traffic Lighting, and Water Supply and Wastewater sectors of City government operations. For more information and updates, see the City's annual Inventory of Greenhouse Gas Emissions.]

Energy Usage (From Utility Purchases): Data below are from monthly utility bills for electricity, natural gas, and steam. Usage is for the month and fiscal year-to-date indicated, expressed as mmBtus (millions of British thermal units). Late billings may impact totals for selected agencies.

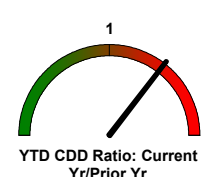
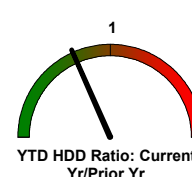
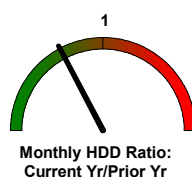
Usage is reported as a group for libraries, cultural institutions, and smaller City agencies (Other). Relative size is % of FY15 total. More detailed reports, including Citywide CORE and Agency CORE reports, are sent to agency energy liaison officers and are available through the DCAS EC3 energy reporting system.

* In millions of Btus (mmBtus) for electricity, natural gas, and steam

	Relative Size [% of Total]	February			Year To Date		
		FY 15	FY 16	-- % Change --	FY 15	FY 16	--% Change --
CITY GOVERNMENT TOTAL		3,469,583	3,317,512	-4.4%	19,985,739	19,097,617	-4.4%
Department of Education	24%	980,468	923,944	-5.8%	4,892,355	4,436,735	-9.3%
Health and Hospitals Corporation	12%	280,200	334,302	19.3%	2,454,065	2,434,207	-0.8%
Department of Environmental Protection	12%	363,758	384,246	5.6%	2,308,603	2,322,647	0.6%
City University of New York - Senior Colleges	9%	282,370	288,701	2.2%	1,810,651	1,775,159	-2.0%
Department of Correction	6%	185,034	183,203	-1.0%	1,030,307	1,187,681	15.3%
Department of Citywide Administrative Services	5%	178,130	138,725	-22.1%	928,804	788,482	-15.1%
Department Of Transportation	4%	116,852	97,700	-16.4%	832,857	813,050	-2.4%
Department of Sanitation	4%	190,353	185,338	-2.6%	701,889	716,272	2.0%
City University of New York - Community Colleges	3%	96,119	102,054	6.2%	641,198	603,821	-5.8%
Police Department	3%	117,650	106,435	-9.5%	593,282	552,112	-6.9%
Department of Parks and Recreation	2%	83,684	73,178	-12.6%	386,570	354,293	-8.3%
Fire Department	2%	71,458	54,623	-23.6%	320,699	279,636	-12.8%
Department of Homeless Services	1%	50,231	48,495	-3.5%	246,484	224,523	-8.9%
Human Resources Administration	1%	41,589	28,247	-32.1%	260,706	183,753	-29.5%
Department Of Health and Mental Hygiene	1%	32,222	27,012	-16.2%	217,241	197,875	-8.9%
Administration for Children's Services	1%	35,392	29,379	-17.0%	197,359	177,073	-10.3%
Cultural Institutions	6%	209,916	181,694	-13.4%	1,267,206	1,189,156	-6.2%
Libraries	2%	64,984	57,226	-11.9%	351,905	324,426	-7.8%
Other	4%	89,174	73,010	-18.1%	543,556	536,716	-1.3%

Degree Days are a weather indicator. Heating and cooling degree days are the cumulative monthly difference in daily temperature from a reference temperature of 65 degrees (designated as the temperature at which neither heating nor cooling is needed). A dial value > 1 means greater energy needs as compared to the prior period. (In spring and fall, small year-to-year changes in degree days can appear large on the dial without having a major impact on energy use.) Even when weather causes increases in energy usage, agencies should still aim to drive down usage.

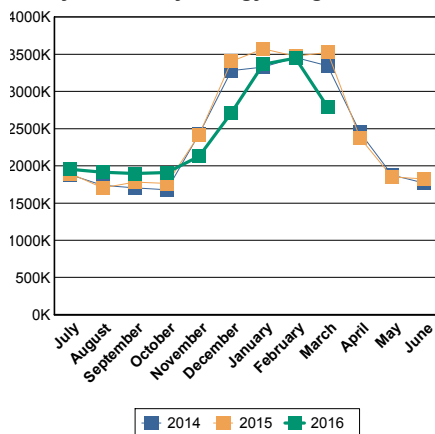
Degree Days	Heating	Cooling
YTD Current FY	2,750	1,194
YTD Prior FY	3,752	841
February FY16	785	0
February FY15	1,136	0



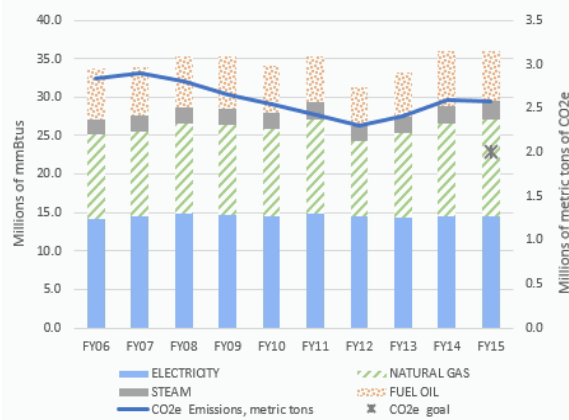


Energy Dashboard Report - March 2016

Citywide Utility Energy Usage in BTU



Energy Usage and GHG Emissions, City Gov't*



• Bar chart covers utility energy, and adds heating fuel oil, for City government buildings and operations. Utility energy data are from citywide billings handled through DCAS; heating fuel oil data are from purchases through City contracts. Chart does NOT include methane emissions and emissions for vehicle fuel oil.

• FY15 energy total was 36.1 million mmBTUs. This resulted in 2.6 million metric tons of CO2e based on recent statewide emissions factors.

• Approximate target for annual CO2e from city government operations' utility energy sources and building fuel oil: 2.0 million metric tons by 2025. [Target is based on applying 35% goal to Building, Street & Traffic Lighting, and Water Supply and Wastewater sectors of City government operations. For more information and updates, see the City's annual Inventory of Greenhouse Gas Emissions.]

Energy Usage (From Utility Purchases): Data below are from monthly utility bills for electricity, natural gas, and steam. Usage is for the month and fiscal year-to-date indicated, expressed as mmBtus (millions of British thermal units). Late billings may impact totals for selected agencies.

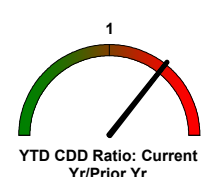
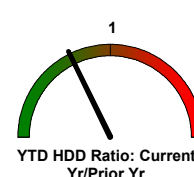
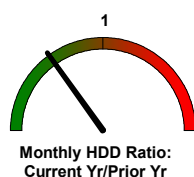
Usage is reported as a group for libraries, cultural institutions, and smaller City agencies (Other). Relative size is % of FY15 total. More detailed reports, including Citywide CORE and Agency CORE reports, are sent to agency energy liaison officers and are available through the DCAS EC3 energy reporting system.

* In millions of Btus (mmBtus) for electricity, natural gas, and steam

* In millions of Btus (mmBtus) for electricity, natural gas, and steam		Relative Size	March			Year To Date		
		[% of Total]	FY 15	FY 16	-- % Change --	FY 15	FY 16	--% Change --
CITY GOVERNMENT TOTAL			3,526,214	2,790,653	-20.9%	23,528,577	22,120,425	-6.0%
Department of Education	24%	986,086	720,047	<div></div>	-27.0%	5,878,442	5,163,139	<div></div> -12.2%
Health and Hospitals Corporation	12%	362,096	332,194	<div></div>	-8.3%	2,816,161	2,866,316	<div></div> 1.8%
Department of Environmental Protection	12%	340,293	316,980	<div></div>	-6.9%	2,648,787	2,658,508	<div></div> 0.4%
City University of New York - Senior Colleges	9%	312,091	233,315	<div></div>	-25.2%	2,139,035	2,040,030	<div></div> -4.6%
Department of Correction	6%	205,378	201,446	<div></div>	-1.9%	1,235,685	1,396,094	<div></div> 13.0%
Department of Citywide Administrative Services	5%	165,074	98,283	<div></div>	-40.5%	1,093,879	924,589	<div></div> -15.5%
Department Of Transportation	4%	108,754	90,606	<div></div>	-16.7%	941,946	905,483	<div></div> -3.9%
Department of Sanitation	4%	175,525	136,395	<div></div>	-22.3%	877,414	853,036	<div></div> -2.8%
City University of New York - Community Colleges	3%	106,745	84,894	<div></div>	-20.5%	747,944	689,001	<div></div> -7.9%
Police Department	3%	116,452	82,877	<div></div>	-28.8%	709,683	630,769	<div></div> -11.1%
Department of Parks and Recreation	2%	97,403	60,368	<div></div>	-38.0%	484,128	410,651	<div></div> -15.2%
Fire Department	2%	61,775	44,369	<div></div>	-28.2%	382,474	324,325	<div></div> -15.2%
Department of Homeless Services	1%	47,279	39,190	<div></div>	-17.1%	293,764	263,690	<div></div> -10.2%
Human Resources Administration	1%	37,315	24,720	<div></div>	-33.8%	298,021	208,429	<div></div> -30.1%
Department Of Health and Mental Hygiene	1%	29,987	21,398	<div></div>	-28.6%	247,228	218,901	<div></div> -11.5%
Administration for Children's Services	1%	33,398	24,370	<div></div>	-27.0%	230,757	201,253	<div></div> -12.8%
Cultural Institutions	6%	200,183	157,818	<div></div>	-21.2%	1,467,390	1,368,371	<div></div> -6.7%
Libraries	2%	61,110	45,723	<div></div>	-25.2%	413,015	369,328	<div></div> -10.6%
Other	4%	79,269	75,660	<div></div>	-4.6%	622,825	628,513	<div></div> 0.9%

Degree Days are a weather indicator. Heating and cooling degree days are the cumulative monthly difference in daily temperature from a reference temperature of 65 degrees (designated as the temperature at which neither heating nor cooling is needed). A dial value > 1 means greater energy needs as compared to the prior period. (In spring and fall, small year-to-year changes in degree days can appear large on the dial without having a major impact on energy use.)
Even when weather causes increases in energy usage, agencies should still aim to drive down usage.

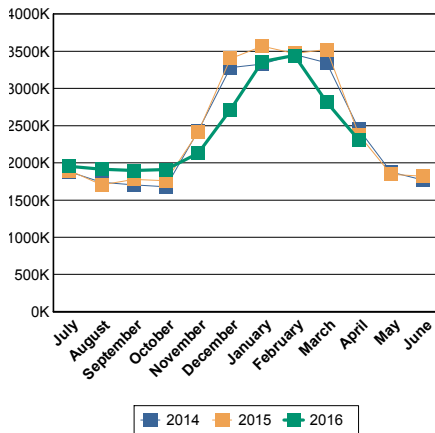
Degree Days	Heating	Cooling
YTD Current FY	3,248	1,200
YTD Prior FY	4,578	841
March FY16	498	6
March FY15	826	0





Energy Dashboard Report - April 2016

Citywide Utility Energy Usage in BTU



Energy Usage and GHG Emissions, City Gov't*



• Bar chart covers utility energy, and adds heating fuel oil, for City government buildings and operations. Utility energy data are from citywide billings handled through DCAS; heating fuel oil data are from purchases through City contracts. Chart does NOT include methane emissions and emissions for vehicle fuel oil.

• FY15 energy total was 36.1 million mmBTUs. This resulted in 2.6 million metric tons of CO2e based on recent statewide emissions factors.

• Approximate target for annual CO2e from city government operations' utility energy sources and building fuel oil: 2.0 million metric tons by 2025. [Target is based on applying 35% goal to Building, Street & Traffic Lighting, and Water Supply and Wastewater sectors of City government operations. For more information and updates, see the City's annual Inventory of Greenhouse Gas Emissions.]

Energy Usage (From Utility Purchases): Data below are from monthly utility bills for electricity, natural gas, and steam. Usage is for the month and fiscal year-to-date indicated, expressed as mmBtus (millions of British thermal units). Late billings may impact totals for selected agencies.

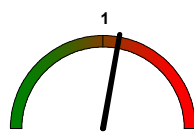
Usage is reported as a group for libraries, cultural institutions, and smaller City agencies (Other). Relative size is % of FY15 total. More detailed reports, including Citywide CORE and Agency CORE reports, are sent to agency energy liaison officers and are available through the DCAS EC3 energy reporting system.

* In millions of Btus (mmBtus) for electricity, natural gas, and steam

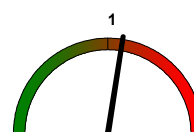
	Relative Size [% of Total]	April			Year To Date		
		FY 15	FY 16	-- % Change --	FY 15	FY 16	--% Change --
CITY GOVERNMENT TOTAL		2,376,362	2,303,578	-3.1%	25,890,512	24,436,290	-5.6%
Department of Education	24%	576,394	565,244	-1.9%	6,455,423	5,724,303	-11.3%
Health and Hospitals Corporation	12%	293,708	297,972	1.5%	3,109,869	3,184,267	2.4%
Department of Environmental Protection	12%	275,165	283,963	3.2%	2,923,946	2,943,207	0.7%
City University of New York - Senior Colleges	9%	183,355	195,351	6.5%	2,303,426	2,216,105	-3.8%
Department of Correction	6%	153,887	153,793	-0.1%	1,390,129	1,533,459	10.3%
Department of Citywide Administrative Services	5%	92,387	79,363	-14.1%	1,186,266	1,016,639	-14.3%
Department Of Transportation	4%	83,832	91,445	9.1%	1,027,451	1,000,866	-2.6%
Department of Sanitation	4%	118,191	105,180	-11.0%	995,628	963,181	-3.3%
City University of New York - Community Colleges	3%	74,246	66,360	-10.6%	822,190	756,269	-8.0%
Police Department	3%	75,751	72,135	-4.8%	785,434	705,637	-10.2%
Department of Parks and Recreation	2%	52,476	44,890	-14.5%	536,655	457,016	-14.8%
Fire Department	2%	39,763	33,774	-15.1%	422,237	358,489	-15.1%
Department of Homeless Services	1%	34,201	29,237	-14.5%	327,964	293,510	-10.5%
Human Resources Administration	1%	25,220	20,998	-16.7%	323,241	228,812	-29.2%
Department Of Health and Mental Hygiene	1%	20,605	17,672	-14.2%	267,833	236,235	-11.8%
Administration for Children's Services	1%	23,553	20,476	-13.1%	255,959	221,730	-13.4%
Cultural Institutions	6%	149,855	137,340	-8.4%	1,617,245	1,510,210	-6.6%
Libraries	2%	41,520	36,787	-11.4%	454,535	406,397	-10.6%
Other	4%	62,253	51,598	-17.1%	685,079	679,957	-0.7%

Degree Days are a weather indicator. Heating and cooling degree days are the cumulative monthly difference in daily temperature from a reference temperature of 65 degrees (designated as the temperature at which neither heating nor cooling is needed). A dial value > 1 means greater energy needs as compared to the prior period. (In spring and fall, small year-to-year changes in degree days can appear large on the dial without having a major impact on energy use.)
Even when weather causes increases in energy usage, agencies should still aim to drive down usage.

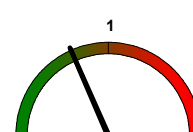
Degree Days	Heating	Cooling
YTD Current FY	3,603	1,213
YTD Prior FY	4,897	846
April FY16	355	13
April FY15	319	5



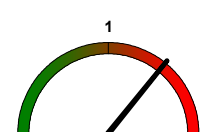
Monthly HDD Ratio:
Current Yr/Prior Yr



Monthly CDD Ratio:
Current Yr/Prior Yr



YTD HDD Ratio: Current
Yr/Prior Yr

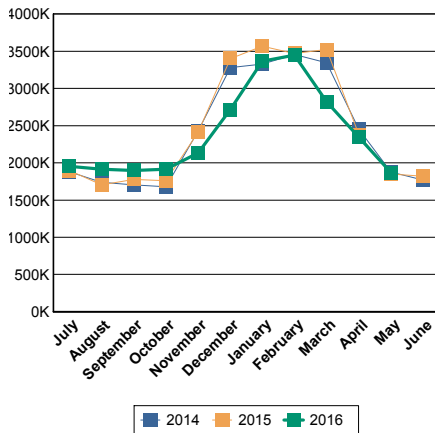


YTD CDD Ratio: Current
Yr/Prior Yr

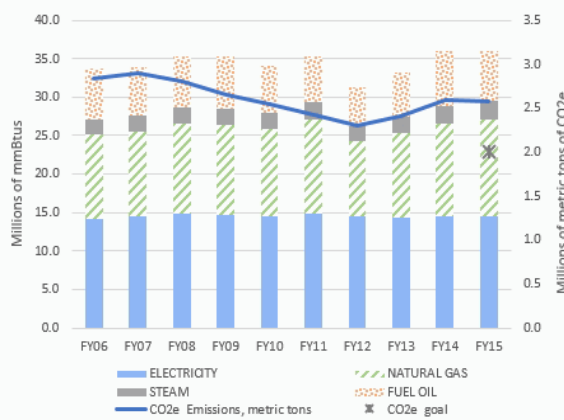


Energy Dashboard Report - May 2016

Citywide Utility Energy Usage in BTU



Energy Usage and GHG Emissions, City Gov't*



• Bar chart covers utility energy, and adds heating fuel oil, for City government buildings and operations. Utility energy data are from citywide billings handled through DCAS; heating fuel oil data are from purchases through City contracts. Chart does NOT include methane emissions and emissions for vehicle fuel oil.

• FY15 energy total was 36.1 million mmBTUs. This resulted in 2.6 million metric tons of CO2e based on recent statewide emissions factors.

• Approximate target for annual CO2e from city government operations' utility energy sources and building fuel oil: 2.0 million metric tons by 2025. [Target is based on applying 35% goal to Building, Street & Traffic Lighting, and Water Supply and Wastewater sectors of City government operations. For more information and updates, see the City's annual Inventory of Greenhouse Gas Emissions.]

Energy Usage (From Utility Purchases): Data below are from monthly utility bills for electricity, natural gas, and steam. Usage is for the month and fiscal year-to-date indicated, expressed as mmBtus (millions of British thermal units). Late billings may impact totals for selected agencies.

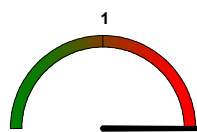
Usage is reported as a group for libraries, cultural institutions, and smaller City agencies (Other). Relative size is % of FY15 total. More detailed reports, including Citywide CORE and Agency CORE reports, are sent to agency energy liaison officers and are available through the DCAS EC3 energy reporting system.

* In millions of Btus (mmBtus) for electricity, natural gas, and steam

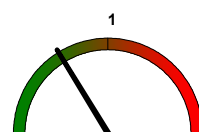
	Relative Size [% of Total]	May			Year To Date		
		FY 15	FY 16	-- % Change --	FY 15	FY 16	--% Change --
CITY GOVERNMENT TOTAL		1,848,080	1,865,570	0.9%	27,739,272	26,374,592	-4.9%
Department of Education	24%	393,480	402,776	2.4%	6,849,217	6,156,356	-10.1%
Health and Hospitals Corporation	12%	260,975	266,094	2.0%	3,370,844	3,459,391	2.6%
Department of Environmental Protection	12%	239,325	255,653	6.8%	3,163,271	3,211,206	1.5%
City University of New York - Senior Colleges	9%	169,890	153,905	-9.4%	2,472,613	2,373,764	-4.0%
Department of Correction	6%	120,733	116,357	-3.6%	1,510,862	1,650,107	9.2%
Department of Citywide Administrative Services	5%	66,506	64,160	-3.5%	1,252,772	1,089,318	-13.0%
Department Of Transportation	4%	78,938	88,434	12.0%	1,106,691	1,090,113	-1.5%
Department of Sanitation	4%	56,035	68,235	21.8%	1,051,671	1,036,845	-1.4%
City University of New York - Community Colleges	3%	53,875	55,614	3.2%	876,768	812,347	-7.3%
Police Department	3%	52,218	59,179	13.3%	837,578	764,799	-8.7%
Department of Parks and Recreation	2%	30,905	30,604	-1.0%	567,267	487,516	-14.1%
Fire Department	2%	26,755	24,994	-6.6%	448,992	383,527	-14.6%
Department of Homeless Services	1%	20,166	21,343	5.8%	348,131	314,803	-9.6%
Human Resources Administration	1%	22,979	18,831	-18.1%	346,045	247,509	-28.5%
Department Of Health and Mental Hygiene	1%	19,691	15,961	-18.9%	287,524	252,291	-12.3%
Administration for Children's Services	1%	18,943	17,675	-6.7%	274,973	240,666	-12.5%
Cultural Institutions	6%	128,927	127,780	-0.9%	1,746,700	1,640,371	-6.1%
Libraries	2%	33,606	30,518	-9.2%	488,141	436,649	-10.5%
Other	4%	54,134	47,457	-12.3%	739,213	727,014	-1.7%

Degree Days are a weather indicator. Heating and cooling degree days are the cumulative monthly difference in daily temperature from a reference temperature of 65 degrees (designated as the temperature at which neither heating nor cooling is needed). A dial value > 1 means greater energy needs as compared to the prior period. (In spring and fall, small year-to-year changes in degree days can appear large on the dial without having a major impact on energy use.)
Even when weather causes increases in energy usage, agencies should still aim to drive down usage.

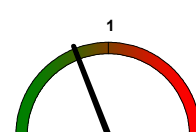
Degree Days	Heating	Cooling
YTD Current FY	3,762	1,313
YTD Prior FY	4,934	1,000
May FY16	159	100
May FY15	37	154



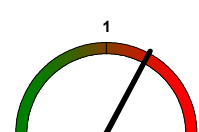
Monthly HDD Ratio:
Current Yr/Prior Yr



Monthly CDD Ratio:
Current Yr/Prior Yr



YTD HDD Ratio: Current
Yr/Prior Yr

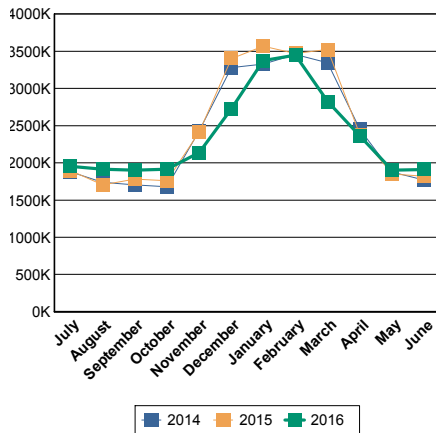


YTD CDD Ratio: Current
Yr/Prior Yr

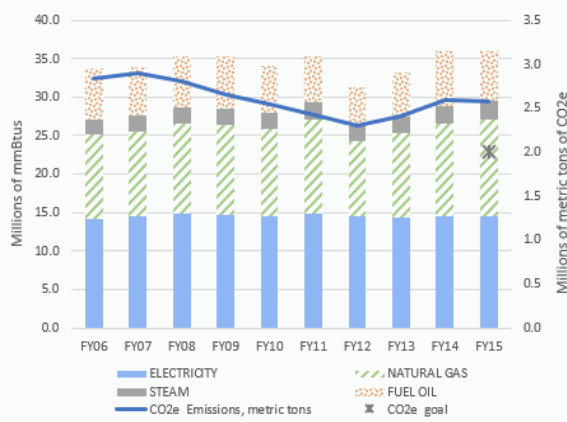


Energy Dashboard Report - June 2016

Citywide Utility Energy Usage in BTU



Energy Usage and GHG Emissions, City Gov't*



• Bar chart covers utility energy, and adds heating fuel oil, for City government buildings and operations. Utility energy data are from citywide billings handled through DCAS; heating fuel oil data are from purchases through City contracts. Chart does NOT include methane emissions and emissions for vehicle fuel oil.

• FY15 energy total was 36.1 million mmBTUs. This resulted in 2.6 million metric tons of CO2e based on recent statewide emissions factors.

• Approximate target for annual CO2e from city government operations' utility energy sources and building fuel oil: 2.0 million metric tons by 2025. [Target is based on applying 35% goal to Building, Street & Traffic Lighting, and Water Supply and Wastewater sectors of City government operations. For more information and updates, see the City's annual Inventory of Greenhouse Gas Emissions.]

Energy Usage (From Utility Purchases): Data below are from monthly utility bills for electricity, natural gas, and steam. Usage is for the month and fiscal year-to-date indicated, expressed as mmBtus (millions of British thermal units). Late billings may impact totals for selected agencies.

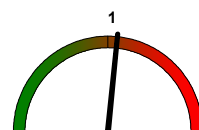
Usage is reported as a group for libraries, cultural institutions, and smaller City agencies (Other). Relative size is % of FY15 total. More detailed reports, including Citywide CORE and Agency CORE reports, are sent to agency energy liaison officers and are available through the DCAS EC3 energy reporting system.

* In millions of Btus (mmBtus) for electricity, natural gas, and steam

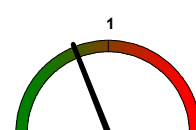
	Relative Size [% of Total]	June			Year To Date		
		FY 15	FY 16	-- % Change --	FY 15	FY 16	--% Change --
CITY GOVERNMENT TOTAL		1,821,535	1,910,779	4.9%	29,564,453	28,364,345	-4.1%
Department of Education	24%	386,233	421,833	9.2%	7,235,450	6,578,098	-9.1%
Health and Hospitals Corporation	12%	281,880	273,862	-2.8%	3,652,724	3,750,274	2.7%
Department of Environmental Protection	12%	231,415	259,613	12.2%	3,394,686	3,496,910	3.0%
City University of New York - Senior Colleges	9%	166,639	172,061	3.3%	2,639,252	2,543,759	-3.6%
Department of Correction	6%	118,279	111,955	-5.3%	1,629,141	1,760,653	8.1%
Department of Citywide Administrative Services	5%	69,292	70,141	1.2%	1,322,063	1,164,144	-11.9%
Department Of Transportation	4%	84,364	83,751	-0.7%	1,194,540	1,174,345	-1.7%
Department of Sanitation	4%	29,501	36,055	22.2%	1,081,172	1,074,071	-0.7%
City University of New York - Community Colleges	3%	60,837	63,777	4.8%	937,605	876,239	-6.5%
Police Department	3%	48,874	55,384	13.3%	886,451	820,196	-7.5%
Department of Parks and Recreation	2%	25,431	28,083	10.4%	592,830	516,329	-12.9%
Fire Department	2%	24,593	27,317	11.1%	473,614	412,273	-13.0%
Department of Homeless Services	1%	16,171	18,048	11.6%	364,301	333,155	-8.5%
Human Resources Administration	1%	20,900	22,473	7.5%	366,945	270,063	-26.4%
Department Of Health and Mental Hygiene	1%	24,386	23,748	-2.6%	311,910	281,334	-9.8%
Administration for Children's Services	1%	19,965	20,359	2.0%	294,938	260,457	-11.7%
Cultural Institutions	6%	125,854	127,732	1.5%	1,872,554	1,774,999	-5.2%
Libraries	2%	31,511	35,528	12.7%	519,652	472,795	-9.0%
Other	4%	55,412	59,061	6.6%	794,624	804,251	1.2%

Degree Days are a weather indicator. Heating and cooling degree days are the cumulative monthly difference in daily temperature from a reference temperature of 65 degrees (designated as the temperature at which neither heating nor cooling is needed). A dial value > 1 means greater energy needs as compared to the prior period. (In spring and fall, small year-to-year changes in degree days can appear large on the dial without having a major impact on energy use.) Even when weather causes increases in energy usage, agencies should still aim to drive down usage.

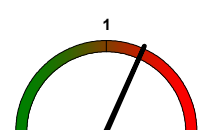
Degree Days	Heating	Cooling
YTD Current FY	3,769	1,545
YTD Prior FY	4,967	1,218
June FY16	7	232
June FY15	33	218



Monthly CDD Ratio:
Current Yr/Prior Yr



YTD HDD Ratio: Current
Yr/Prior Yr

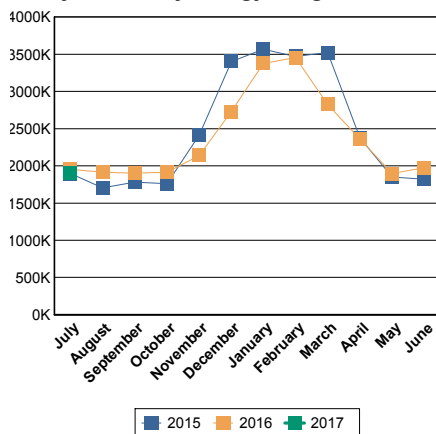


YTD CDD Ratio: Current
Yr/Prior Yr

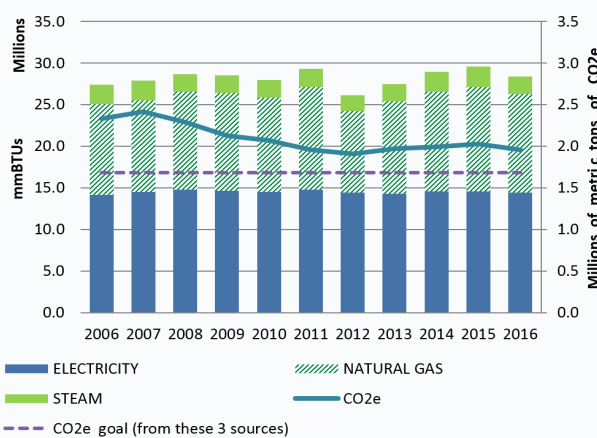


Energy Dashboard Report - July 2016

Citywide Utility Energy Usage in BTU



City Government Energy Use, by Fiscal Year



- Bar chart covers utility energy for City government buildings and operations. Utility energy data are from citywide billings handled through DCAS.

- FY16 energy total was 28.4 million mmBTUs. This resulted in 1.96 million metric tons of CO2e based on recent statewide emissions factors.

- Approximate target for annual CO2e from city government operations' utility energy sources: 1.69 million metric tons by 2025. [Target is based on applying 35% goal to Building, Street & Traffic Lighting, and Water Supply and Wastewater sectors of City government operations. For more information and updates, see the City's annual Inventory of Greenhouse Gas Emissions.]

Energy Usage (From Utility Purchases): Data below are from monthly utility bills for electricity, natural gas, and steam. Usage is for the month and fiscal year-to-date indicated, expressed as mmBTUs (millions of British thermal units). Late billings may impact totals for selected agencies.

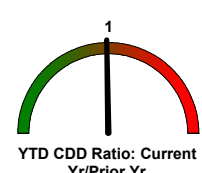
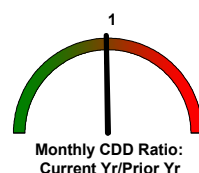
Usage is reported as a group for libraries, cultural institutions, and smaller City agencies (Other). Relative size is % of FY16 total. More detailed reports, including Citywide CORE and Agency CORE reports, are sent to agency energy liaison officers and are available through the DCAS EC3 energy reporting system.

* In millions of Btus (mmBtus) for electricity, natural gas, and steam

	Relative Size [% of Total]	July			Year To Date		
		FY 16	FY 17	-- % Change --	FY 16	FY 17	--% Change --
CITY GOVERNMENT TOTAL		1,951,917	1,901,842	-2.6%	1,951,917	1,901,842	-2.6%
Department of Education	22%	366,129	371,650	1.5%	366,129	371,650	1.5%
Health and Hospitals Corporation	13%	308,495	303,797	-1.5%	308,495	303,797	-1.5%
Department of Environmental Protection	12%	260,011	250,834	-3.5%	260,011	250,834	-3.5%
City University of New York - Senior Colleges	9%	191,073	181,052	-5.2%	191,073	181,052	-5.2%
Department of Correction	6%	125,958	117,425	-6.8%	125,958	117,425	-6.8%
Department of Citywide Administrative Services	4%	80,246	73,644	-8.2%	80,246	73,644	-8.2%
Department Of Transportation	4%	82,188	81,913	-0.3%	82,188	81,913	-0.3%
Department of Sanitation	4%	37,088	36,056	-2.8%	37,088	36,056	-2.8%
City University of New York - Community Colleges	3%	64,069	67,471	5.3%	64,069	67,471	5.3%
Police Department	3%	55,977	56,702	1.3%	55,977	56,702	1.3%
Department of Parks and Recreation	2%	31,308	27,824	-11.1%	31,308	27,824	-11.1%
Fire Department	1%	29,053	28,177	-3.0%	29,053	28,177	-3.0%
Department of Homeless Services	1%	17,444	15,770	-9.6%	17,444	15,770	-9.6%
Human Resources Administration	1%	23,178	23,177	0.0%	23,178	23,177	0.0%
Department Of Health and Mental Hygiene	1%	31,098	27,299	-12.2%	31,098	27,299	-12.2%
Administration for Children's Services	1%	22,528	20,860	-7.4%	22,528	20,860	-7.4%
Cultural Institutions	7%	129,571	126,101	-2.7%	129,571	126,101	-2.7%
Libraries	2%	36,251	37,243	2.7%	36,251	37,243	2.7%
Other	3%	60,253	54,847	-9.0%	60,253	54,847	-9.0%

Degree Days are a weather indicator. Heating and cooling degree days are the cumulative monthly difference in daily temperature from a reference temperature of 65 degrees (designated as the temperature at which neither heating nor cooling is needed). A dial value > 1 means greater energy needs as compared to the prior period. (In spring and fall, small year-to-year changes in degree days can appear large on the dial without having a major impact on energy use.) Even when weather causes increases in energy usage, agencies should still aim to drive down usage.

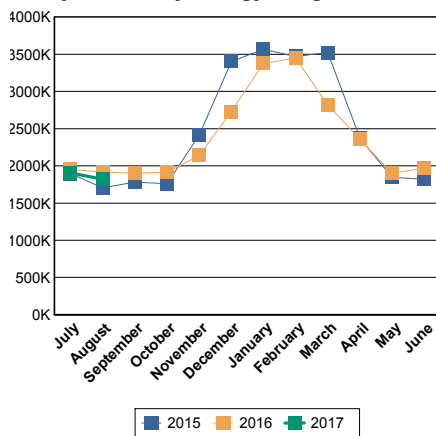
Degree Days	Heating	Cooling
YTD Current FY	0	432
YTD Prior FY	0	437
July FY17	0	432
July FY16	0	437



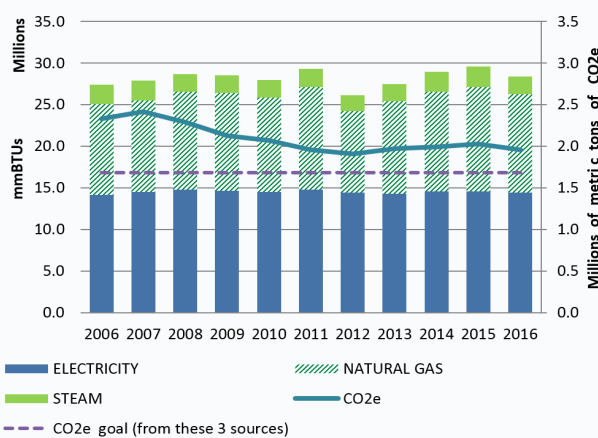


Energy Dashboard Report - August 2016

Citywide Utility Energy Usage in BTU



City Government Energy Use, by Fiscal Year



• Bar chart covers utility energy for City government buildings and operations. Utility energy data are from citywide billings handled through DCAS.

• FY16 energy total was 28.4 million mmBTUs. This resulted in 1.96 million metric tons of CO2e based on recent statewide emissions factors.

• Approximate target for annual CO2e from city government operations' utility energy sources: 1.69 million metric tons by 2025. [Target is based on applying 35% goal to Building, Street & Traffic Lighting, and Water Supply and Wastewater sectors of City government operations. For more information and updates, see the City's annual Inventory of Greenhouse Gas Emissions.]

Energy Usage (From Utility Purchases): Data below are from monthly utility bills for electricity, natural gas, and steam. Usage is for the month and fiscal year-to-date indicated, expressed as mmBTUs (millions of British thermal units). Late billings may impact totals for selected agencies.

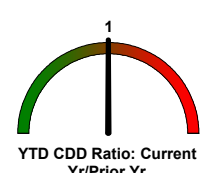
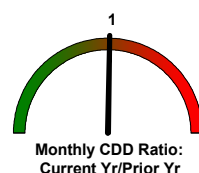
Usage is reported as a group for libraries, cultural institutions, and smaller City agencies (Other). Relative size is % of FY16 total. More detailed reports, including Citywide CORE and Agency CORE reports, are sent to agency energy liaison officers and are available through the DCAS EC3 energy reporting system.

* In millions of Btus (mmBtus) for electricity, natural gas, and steam

	Relative Size [% of Total]	August			Year To Date		
		FY 16	FY 17	-- % Change --	FY 16	FY 17	--% Change --
CITY GOVERNMENT TOTAL		1,915,665	1,821,165	-4.9%	3,867,636	3,726,505	-3.6%
Department of Education	22%	351,684	362,962	3.2%	717,813	735,115	2.4%
Health and Hospitals Corporation	13%	290,023	286,513	-1.2%	598,518	585,633	-2.2%
Department of Environmental Protection	12%	244,613	243,033	-0.6%	504,623	493,267	-2.3%
City University of New York - Senior Colleges	9%	190,604	166,825	-12.5%	381,708	349,115	-8.5%
Department of Correction	6%	128,297	89,435	-30.3%	254,255	206,860	-18.6%
Department of Citywide Administrative Services	4%	79,528	72,746	-8.5%	159,774	149,377	-6.5%
Department Of Transportation	4%	89,448	91,369	2.1%	171,636	173,458	1.1%
Department of Sanitation	4%	36,789	35,527	-3.4%	73,877	71,898	-2.7%
City University of New York - Community Colleges	3%	70,540	57,985	-17.8%	134,609	125,818	-6.5%
Police Department	3%	53,553	55,174	3.0%	109,527	111,358	1.7%
Department of Parks and Recreation	2%	28,341	27,199	-4.0%	59,639	55,324	-7.2%
Fire Department	1%	27,064	27,529	1.7%	56,152	56,363	0.4%
Department of Homeless Services	1%	16,325	15,932	-2.4%	33,769	32,995	-2.3%
Human Resources Administration	1%	22,949	23,396	1.9%	46,127	47,000	1.9%
Department Of Health and Mental Hygiene	1%	31,044	29,198	-5.9%	62,142	56,521	-9.0%
Administration for Children's Services	1%	21,232	21,063	-0.8%	43,760	41,981	-4.1%
Cultural Institutions	7%	130,352	122,642	-5.9%	259,923	248,813	-4.3%
Libraries	2%	35,501	38,463	8.3%	71,755	75,738	5.6%
Other	3%	67,778	54,174	-20.1%	128,031	109,870	-14.2%

Degree Days are a weather indicator. Heating and cooling degree days are the cumulative monthly difference in daily temperature from a reference temperature of 65 degrees (designated as the temperature at which neither heating nor cooling is needed). A dial value > 1 means greater energy needs as compared to the prior period. (In spring and fall, small year-to-year changes in degree days can appear large on the dial without having a major impact on energy use.) Even when weather causes increases in energy usage, agencies should still aim to drive down usage.

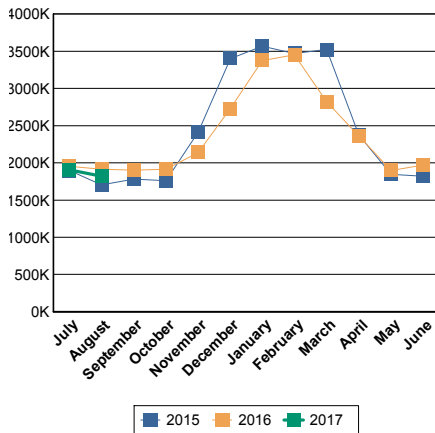
Degree Days	Heating	Cooling
YTD Current FY	0	878
YTD Prior FY	0	878
August FY17	0	446
August FY16	0	441



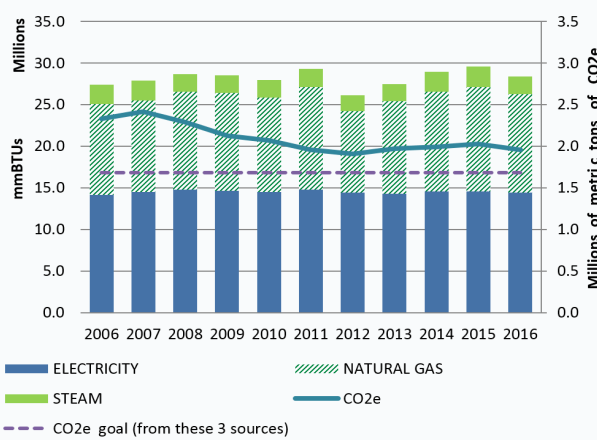


Energy Dashboard Report - September 2016

Citywide Utility Energy Usage in BTU



City Government Energy Use, by Fiscal Year



• Bar chart covers utility energy for City government buildings and operations. Utility energy data are from citywide billings handled through DCAS.

• FY16 energy total was 28.4 million mmBTUs. This resulted in 1.96 million metric tons of CO2e based on recent statewide emissions factors.

• Approximate target for annual CO2e from city government operations' utility energy sources: 1.69 million metric tons by 2025. [Target is based on applying 35% goal to Building, Street & Traffic Lighting, and Water Supply and Wastewater sectors of City government operations. For more information and updates, see the City's annual Inventory of Greenhouse Gas Emissions.]

Energy Usage (From Utility Purchases): Data below are from monthly utility bills for electricity, natural gas, and steam. Usage is for the month and fiscal year-to-date indicated, expressed as mmBTUs (millions of British thermal units). Late billings may impact totals for selected agencies.

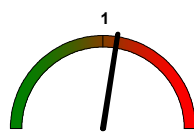
Usage is reported as a group for libraries, cultural institutions, and smaller City agencies (Other). Relative size is % of FY16 total. More detailed reports, including Citywide CORE and Agency CORE reports, are sent to agency energy liaison officers and are available through the DCAS EC3 energy reporting system.

* In millions of Btus (mmBtus) for electricity, natural gas, and steam

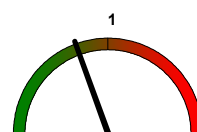
	Relative Size [% of Total]	September			Year To Date		
		FY 16	FY 17	-- % Change --	FY 16	FY 17	--% Change --
CITY GOVERNMENT TOTAL		1,899,470	1,874,780	-1.3%	5,764,679	5,636,931	-2.2%
Department of Education	22%	371,495	405,211	9.1%	1,089,354	1,143,512	5.0%
Health and Hospitals Corporation	13%	284,631	274,724	-3.5%	882,747	874,572	-0.9%
Department of Environmental Protection	12%	245,713	265,842	8.2%	750,335	765,244	2.0%
City University of New York - Senior Colleges	9%	187,010	162,226	-13.3%	568,718	515,222	-9.4%
Department of Correction	6%	126,357	86,979	-31.2%	380,612	293,839	-22.8%
Department of Citywide Administrative Services	4%	77,390	71,547	-7.5%	237,164	225,171	-5.1%
Department Of Transportation	4%	95,782	97,324	1.6%	267,339	270,838	1.3%
Department of Sanitation	4%	36,753	35,094	-4.5%	110,630	107,095	-3.2%
City University of New York - Community Colleges	3%	64,446	63,860	-0.9%	199,055	189,644	-4.7%
Police Department	3%	51,030	55,128	8.0%	160,770	167,791	4.4%
Department of Parks and Recreation	2%	26,044	27,052	3.9%	85,683	82,514	-3.7%
Fire Department	1%	25,931	27,950	7.8%	82,083	83,837	2.1%
Department of Homeless Services	1%	15,290	15,849	3.7%	49,059	49,165	0.2%
Human Resources Administration	1%	21,325	23,326	9.4%	67,452	70,281	4.2%
Department Of Health and Mental Hygiene	1%	27,301	24,594	-9.9%	89,442	81,094	-9.3%
Administration for Children's Services	1%	20,065	20,881	4.1%	63,825	62,877	-1.5%
Cultural Institutions	7%	129,188	124,965	-3.3%	389,111	375,649	-3.5%
Libraries	2%	32,899	36,134	9.8%	104,654	111,830	6.9%
Other	3%	60,820	56,094	-7.8%	186,645	166,756	-10.7%

Degree Days are a weather indicator. Heating and cooling degree days are the cumulative monthly difference in daily temperature from a reference temperature of 65 degrees (designated as the temperature at which neither heating nor cooling is needed). A dial value > 1 means greater energy needs as compared to the prior period. (In spring and fall, small year-to-year changes in degree days can appear large on the dial without having a major impact on energy use.) Even when weather causes increases in energy usage, agencies should still aim to drive down usage.

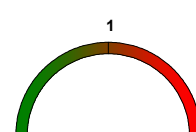
Degree Days	Heating	Cooling
YTD Current FY	17	1,106
YTD Prior FY	1	1,171
September FY17	17	228
September FY16	1	293



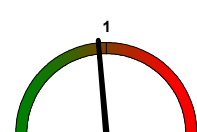
Monthly HDD Ratio:
Current Yr/Prior Yr



Monthly CDD Ratio:
Current Yr/Prior Yr



YTD HDD Ratio: Current
Yr/Prior Yr

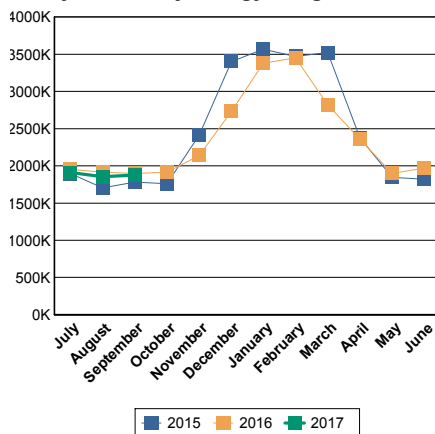


YTD CDD Ratio: Current
Yr/Prior Yr

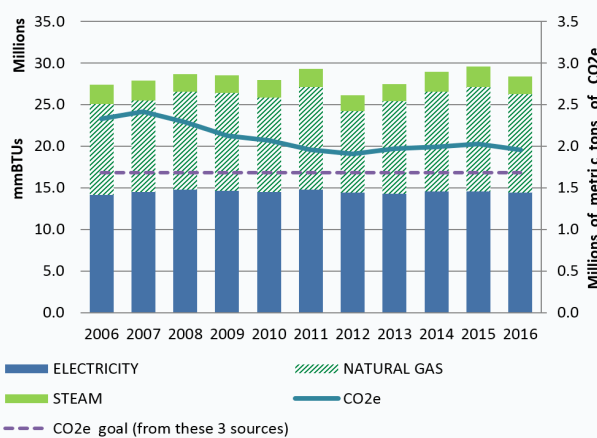


Energy Dashboard Report - October 2016

Citywide Utility Energy Usage in BTU



City Government Energy Use, by Fiscal Year



• Bar chart covers utility energy for City government buildings and operations. Utility energy data are from citywide billings handled through DCAS.

• FY16 energy total was 28.4 million mmBTUs. This resulted in 1.96 million metric tons of CO2e based on recent statewide emissions factors.

• Approximate target for annual CO2e from city government operations' utility energy sources: 1.69 million metric tons by 2025. [Target is based on applying 35% goal to Building, Street & Traffic Lighting, and Water Supply and Wastewater sectors of City government operations. For more information and updates, see the City's annual Inventory of Greenhouse Gas Emissions.]

Energy Usage (From Utility Purchases): Data below are from monthly utility bills for electricity, natural gas, and steam. Usage is for the month and fiscal year-to-date indicated, expressed as mmBTUs (millions of British thermal units). Late billings may impact totals for selected agencies.

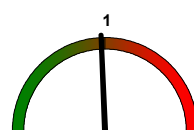
Usage is reported as a group for libraries, cultural institutions, and smaller City agencies (Other). Relative size is % of FY16 total. More detailed reports, including Citywide CORE and Agency CORE reports, are sent to agency energy liaison officers and are available through the DCAS EC3 energy reporting system.

* In millions of Btus (mmBtus) for electricity, natural gas, and steam

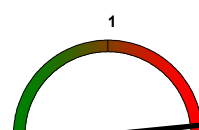
	Relative Size [% of Total]	October			Year To Date		
		FY 16	FY 17	-- % Change --	FY 16	FY 17	--% Change --
CITY GOVERNMENT TOTAL		1,912,998	1,747,561	-8.6%	7,674,280	7,405,234	-3.5%
Department of Education	22%	398,745	350,710	-12.0%	1,488,141	1,494,265	0.4%
Health and Hospitals Corporation	13%	260,944	242,656	-7.0%	1,143,829	1,130,580	-1.2%
Department of Environmental Protection	12%	266,735	256,771	-3.7%	1,017,070	1,023,069	0.6%
City University of New York - Senior Colleges	9%	164,405	198,503	20.7%	733,123	709,795	-3.2%
Department of Correction	6%	133,537	92,524	-30.7%	514,149	382,525	-25.6%
Department of Citywide Administrative Services	4%	70,399	59,163	-16.0%	307,562	288,002	-6.4%
Department Of Transportation	4%	108,195	102,930	-4.9%	375,535	373,869	-0.4%
Department of Sanitation	4%	50,622	37,660	-25.6%	161,252	150,020	-7.0%
City University of New York - Community Colleges	3%	51,194	45,758	-10.6%	250,249	235,687	-5.8%
Police Department	3%	50,783	46,074	-9.3%	211,553	213,761	1.0%
Department of Parks and Recreation	2%	30,263	25,257	-16.5%	116,026	107,848	-7.0%
Fire Department	1%	24,329	21,932	-9.9%	106,412	105,786	-0.6%
Department of Homeless Services	1%	19,061	16,446	-13.7%	68,121	65,696	-3.6%
Human Resources Administration	1%	19,352	18,811	-2.8%	86,804	90,179	3.9%
Department Of Health and Mental Hygiene	1%	18,045	16,024	-11.2%	107,488	97,805	-9.0%
Administration for Children's Services	1%	17,410	15,582	-10.5%	81,235	78,474	-3.4%
Cultural Institutions	7%	139,269	122,228	-12.2%	528,381	499,834	-5.4%
Libraries	2%	30,199	28,467	-5.7%	134,842	140,003	3.8%
Other	3%	59,509	50,065	-15.9%	242,509	218,037	-10.1%

Degree Days are a weather indicator. Heating and cooling degree days are the cumulative monthly difference in daily temperature from a reference temperature of 65 degrees (designated as the temperature at which neither heating nor cooling is needed). A dial value > 1 means greater energy needs as compared to the prior period. (In spring and fall, small year-to-year changes in degree days can appear large on the dial without having a major impact on energy use.) Even when weather causes increases in energy usage, agencies should still aim to drive down usage.

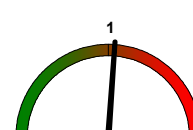
Degree Days	Heating	Cooling
YTD Current FY	234	1,135
YTD Prior FY	224	1,186
October FY17	217	29
October FY16	223	15



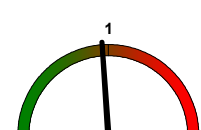
Monthly HDD Ratio:
Current Yr/Prior Yr



Monthly CDD Ratio:
Current Yr/Prior Yr



YTD HDD Ratio: Current
Yr/Prior Yr

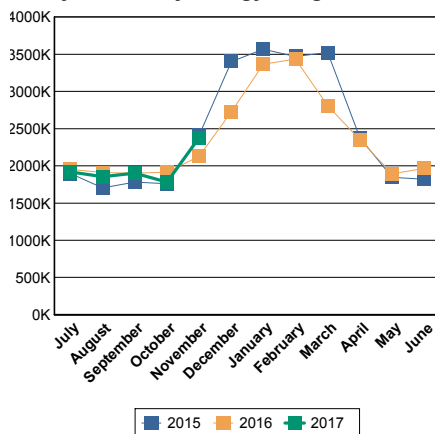


YTD CDD Ratio: Current
Yr/Prior Yr

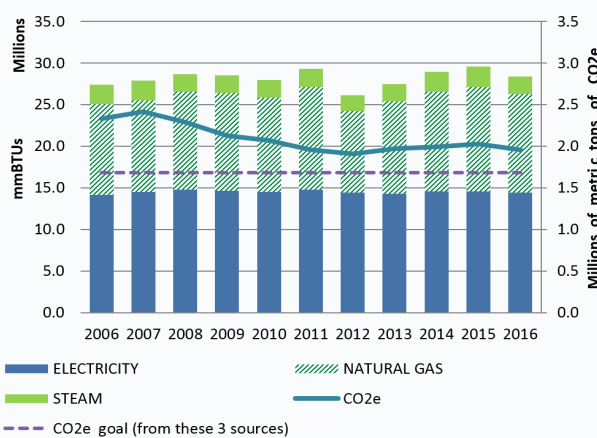


Energy Dashboard Report - November 2016

Citywide Utility Energy Usage in BTU



City Government Energy Use, by Fiscal Year



• Bar chart covers utility energy for City government buildings and operations. Utility energy data are from citywide billings handled through DCAS.

• FY16 energy total was 28.4 million mmBTUs. This resulted in 1.96 million metric tons of CO2e based on recent statewide emissions factors.

• Approximate target for annual CO2e from city government operations' utility energy sources: 1.69 million metric tons by 2025. [Target is based on applying 35% goal to Building, Street & Traffic Lighting, and Water Supply and Wastewater sectors of City government operations. For more information and updates, see the City's annual Inventory of Greenhouse Gas Emissions.]

Energy Usage (From Utility Purchases): Data below are from monthly utility bills for electricity, natural gas, and steam. Usage is for the month and fiscal year-to-date indicated, expressed as mmBTUs (millions of British thermal units). Late billings may impact totals for selected agencies.

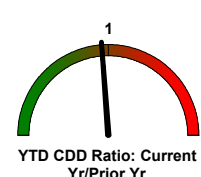
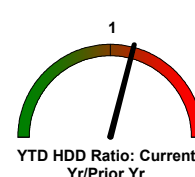
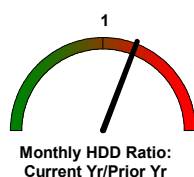
Usage is reported as a group for libraries, cultural institutions, and smaller City agencies (Other). Relative size is % of FY16 total. More detailed reports, including Citywide CORE and Agency CORE reports, are sent to agency energy liaison officers and are available through the DCAS EC3 energy reporting system.

* In millions of Btus (mmBtus) for electricity, natural gas, and steam

	Relative Size [% of Total]	November			Year To Date		
		FY 16	FY 17	-- % Change --	FY 16	FY 17	--% Change --
CITY GOVERNMENT TOTAL		2,129,655	2,378,790	11.7%	9,804,770	9,835,064	0.3%
Department of Education	22%	479,216	595,373	24.2%	1,967,486	2,089,757	6.2%
Health and Hospitals Corporation	13%	285,909	284,155	-0.6%	1,429,738	1,427,901	-0.1%
Department of Environmental Protection	12%	269,697	315,479	17.0%	1,286,767	1,341,056	4.2%
City University of New York - Senior Colleges	9%	205,189	213,296	4.0%	938,312	949,865	1.2%
Department of Correction	6%	121,028	125,719	3.9%	635,177	508,244	-20.0%
Department of Citywide Administrative Services	4%	80,738	84,186	4.3%	388,300	376,330	-3.1%
Department Of Transportation	4%	107,689	117,351	9.0%	483,924	492,040	1.7%
Department of Sanitation	4%	85,331	93,681	9.8%	246,583	244,529	-0.8%
City University of New York - Community Colleges	3%	63,697	71,849	12.8%	313,946	307,506	-2.1%
Police Department	3%	58,644	68,552	16.9%	270,197	282,742	4.6%
Department of Parks and Recreation	2%	40,998	45,479	10.9%	157,024	153,571	-2.2%
Fire Department	1%	27,256	32,117	17.8%	133,668	138,447	3.6%
Department of Homeless Services	1%	26,265	32,045	22.0%	94,386	97,736	3.5%
Human Resources Administration	1%	18,150	21,943	20.9%	104,954	112,336	7.0%
Department Of Health and Mental Hygiene	1%	17,601	17,598	0.0%	125,089	116,066	-7.2%
Administration for Children's Services	1%	17,365	19,685	13.4%	98,601	97,997	-0.6%
Cultural Institutions	7%	139,467	145,911	4.6%	667,849	646,797	-3.2%
Libraries	2%	33,368	38,578	15.6%	168,210	178,550	6.1%
Other	3%	52,048	55,793	7.2%	294,560	273,594	-7.1%

Degree Days are a weather indicator. Heating and cooling degree days are the cumulative monthly difference in daily temperature from a reference temperature of 65 degrees (designated as the temperature at which neither heating nor cooling is needed). A dial value > 1 means greater energy needs as compared to the prior period. (In spring and fall, small year-to-year changes in degree days can appear large on the dial without having a major impact on energy use.) Even when weather causes increases in energy usage, agencies should still aim to drive down usage.

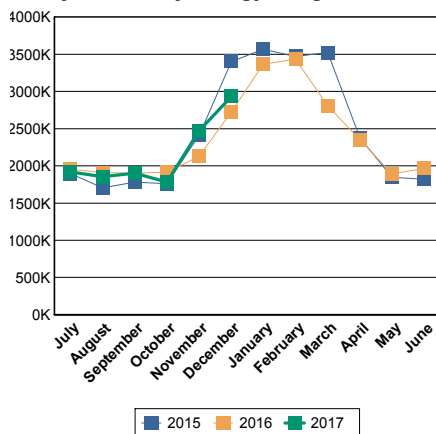
Degree Days	Heating	Cooling
YTD Current FY	687	1,135
YTD Prior FY	591	1,191
November FY17	453	0
November FY16	367	5



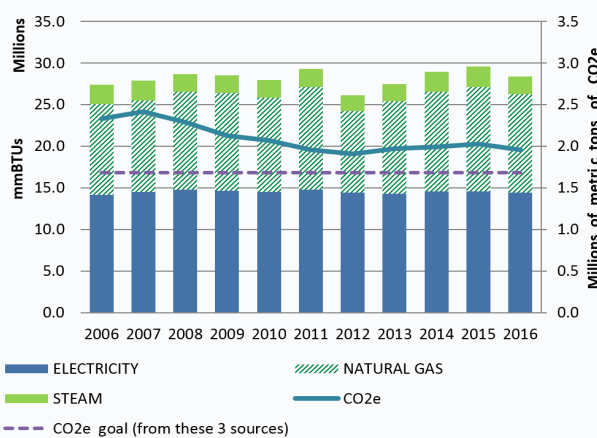


Energy Dashboard Report - December 2016

Citywide Utility Energy Usage in BTU



City Government Energy Use, by Fiscal Year



• Bar chart covers utility energy for City government buildings and operations. Utility energy data are from citywide billings handled through DCAS.

• FY16 energy total was 28.4 million mmBTUs. This resulted in 1.96 million metric tons of CO2e based on recent statewide emissions factors.

• Approximate target for annual CO2e from city government operations' utility energy sources: 1.69 million metric tons by 2025. [Target is based on applying 35% goal to Building, Street & Traffic Lighting, and Water Supply and Wastewater sectors of City government operations. For more information and updates, see the City's annual Inventory of Greenhouse Gas Emissions.]

Energy Usage (From Utility Purchases): Data below are from monthly utility bills for electricity, natural gas, and steam. Usage is for the month and fiscal year-to-date indicated, expressed as mmBTUs (millions of British thermal units). Late billings may impact totals for selected agencies.

Usage is reported as a group for libraries, cultural institutions, and smaller City agencies (Other). Relative size is % of FY16 total. More detailed reports, including Citywide CORE and Agency CORE reports, are sent to agency energy liaison officers and are available through the DCAS EC3 energy reporting system.

* In millions of Btus (mmBtus) for electricity, natural gas, and steam

	Relative Size [% of Total]	December			Year To Date		
		FY 16	FY 17	-- % Change --	FY 16	FY 17	--% Change --
CITY GOVERNMENT TOTAL		2,725,201	2,933,100	7.6%	12,530,541	12,864,731	2.7%
Department of Education	22%	661,612	817,713	23.6%	2,629,468	2,915,161	10.9%
Health and Hospitals Corporation	13%	341,922	309,087	-9.6%	1,771,660	1,759,598	-0.7%
Department of Environmental Protection	12%	343,062	323,417	-5.7%	1,628,917	1,665,559	2.2%
City University of New York - Senior Colleges	9%	243,259	276,414	13.6%	1,181,571	1,243,621	5.3%
Department of Correction	6%	148,270	165,959	11.9%	783,447	680,571	-13.1%
Department of Citywide Administrative Services	4%	114,934	106,577	-7.3%	503,230	497,393	-1.2%
Department Of Transportation	4%	119,446	119,212	-0.2%	603,370	612,303	1.5%
Department of Sanitation	4%	121,871	147,262	20.8%	368,454	399,360	8.4%
City University of New York - Community Colleges	3%	79,112	87,392	10.5%	393,058	394,905	0.5%
Police Department	3%	77,369	88,607	14.5%	347,566	372,055	7.0%
Department of Parks and Recreation	2%	55,831	62,518	12.0%	213,006	217,925	2.3%
Fire Department	1%	38,058	46,132	21.2%	171,739	184,956	7.7%
Department of Homeless Services	1%	39,588	42,171	6.5%	134,925	141,906	5.2%
Human Resources Administration	1%	23,701	25,514	7.7%	128,655	137,694	7.0%
Department Of Health and Mental Hygiene	1%	21,016	22,209	5.7%	146,105	140,171	-4.1%
Administration for Children's Services	1%	22,021	24,483	11.2%	120,621	122,379	1.5%
Cultural Institutions	7%	166,730	158,726	-4.8%	834,579	816,341	-2.2%
Libraries	2%	43,195	47,194	9.3%	211,405	226,027	6.9%
Other	3%	64,205	62,511	-2.6%	358,766	336,806	-6.1%

Degree Days are a weather indicator. Heating and cooling degree days are the cumulative monthly difference in daily temperature from a reference temperature of 65 degrees (designated as the temperature at which neither heating nor cooling is needed). A dial value > 1 means greater energy needs as compared to the prior period. (In spring and fall, small year-to-year changes in degree days can appear large on the dial without having a major impact on energy use.) Even when weather causes increases in energy usage, agencies should still aim to drive down usage.

Degree Days	Heating	Cooling
YTD Current FY	1,505	1,135
YTD Prior FY	1,025	1,194
December FY17	818	0
December FY16	434	3

