



THE CITY RECORD

Official Journal of The City of New York

THE CITY RECORD
U.S.P.S. 0114-660

Printed on paper containing
40% post-consumer material

VOLUME CXXXVIII NUMBER 20

MONDAY, JANUARY 31, 2011

PRICE \$4.00

TABLE OF CONTENTS

PUBLIC HEARINGS & MEETINGS

Board Meetings	201
Queens Borough President	201
Staten Island Borough President	201
City Council	201
Community Boards	202
Franchise and Concession Review Committee	202
Labor Relations	202
Landmarks Preservation Commission	202
Transportation	202

COURT NOTICE

Supreme Court	203
Richmond County	203

See Court Notice Maps213-215

PROPERTY DISPOSITION

Citywide Administrative Services	206
Municipal Supply Services	206
Auction	206
Police	206

PROCUREMENT

Administration for Children's Services	207
Citywide Administrative Services	207
Municipal Supply Services	207
Vendor Lists	207
Economic Development Corporation	207
Contracts	207
Environmental Protection	207
Water Supply	207

Wastewater Treatment	207
Health and Hospitals Corporation	207
Health and Mental Hygiene	207
Agency Chief Contracting Officer	207
Homeless Services	208
Office of Contracts and Procurement	208
Human Resources Administration	208
Contracts	208
Information Technology and Telecommunications	208
Agency Chief Contracting Officer	208
Juvenile Justice	209
Parks and Recreation	209
Purchasing and Accounting	209
Revenue and Concessions	209

Sanitation	209
Agency Chief Contracting Officer	209
Small Business Services	209
Procurement	209

SPECIAL MATERIALS

Comptroller	209
City Record	209
Housing and Community Renewal Office	210
Changes in Personnel	211

LATE NOTICES

Health and Hospitals Corporation	212
Board of Standards and Appeals	212

READERS GUIDE

THE CITY RECORD

MICHAEL R. BLOOMBERG, Mayor

EDNA WELLS HANDY, Commissioner, Department of Citywide Administrative Services.
ELI BLACHMAN, Editor of The City Record.

Published Monday through Friday, except legal holidays by the Department of Citywide Administrative Services of the City of New York under Authority of Section 1066 of the New York City Charter.

Subscription—\$500 a year; daily, \$4.00 a copy (\$5.00 by mail) Periodicals Postage Paid at New York, N.Y.
POSTMASTER: Send address changes to THE CITY RECORD, 1 Centre Street, Room 2208, New York, N.Y. 10007 - 1602

Editorial Office
1 Centre Street, Room 2208
New York N.Y. 10007-1602
Telephone (212) 669-8252

Subscription Changes/Information
1 Centre Street, Room 2208
New York N.Y. 10007-1602
Telephone (212) 669-8252

The City of New York Home Page
provides Internet access via the WORLD
WIDE WEB to solicitations and awards
<http://www.nyc.gov/cityrecord>

PUBLIC HEARINGS AND MEETINGS

See Also: Procurement; Agency Rules

BOARD MEETINGS

NOTICE OF MEETINGS

City Planning Commission

Meets in Spector Hall, 22 Reade Street, New York, New York 10007, twice monthly on Wednesday, at 10:00 A.M., unless otherwise ordered by the Commission.

City Council

Meets by Charter twice a month in Councilman's Chamber, City Hall, Manhattan, New York 10007, at 1:30 P.M.

Contract Awards Public Hearing

Meets in Spector Hall, 22 Reade Street, Main Floor, Manhattan, weekly, on Thursday, commencing 10:00 A.M., and other days, times and location as warranted.

Design Commission

Meets in City Hall, Third Floor, Manhattan, New York 10007 on the second Monday of the month, except August. For changes in the schedule, copies of monthly agendas, or additional information, please call (212) 788-3071 or visit our web site at nyc.gov/artcommission

Department of Education

Meets in the Hall of the Board for a monthly business meeting on the Third Wednesday, of each month at 6:00 P.M. The Annual Meeting is held on the first Tuesday of July at 10:00 A.M.

Board of Elections

32 Broadway, 7th floor, New York, NY 10004, on Tuesday, at 1:30 P.M. and at the call of the Commissioner

Environmental Control Board

Meets at 66 John Street, 10th floor, conference room, New York, NY 10038 at 9:15 A.M., once a month at the call of the Chairman.

Board of Health

Meets in Room 330, 125 Worth Street, Manhattan, New York 10013, at 10:00 A.M., at the call of the Chairman.

Health Insurance Board

Meets in Room 530, Municipal Building, Manhattan, New York 10007, at call of the Chairman.

Board of Higher Education

Meets at 535 East 80th Street, Manhattan, New York 10021, at 5:30 P.M., on fourth Monday in January, February, March, April, June, September, October, November and December. Annual meeting held on fourth Monday in May.

Citywide Administrative Services

Division Of Citywide Personnel Services will hold hearings as needed in Room 2203, 2 Washington Street, New York, N.Y. 10004.

Commission on Human Rights

Meets on 10th floor in the Commission's Central Office, 40 Rector Street, New York, New York 10006, on the fourth Wednesday of each month, at 8:00 A.M.

In Rem Foreclosure Release Board

Meets in Spector Hall, 22 Reade Street, Main Floor, Manhattan, Monthly on Tuesdays, commencing 10:00 A.M., and other days, times and location as warranted.

Franchise And Concession Review Committee

Meets in Spector Hall, 22 Reade Street, Main Floor, Manhattan, Monthly on Wednesdays, commencing 2:30 P.M., and other days, times and location as warranted.

Real Property Acquisition And Disposition

Meets in Spector Hall, 22 Reade Street, Main Floor, Manhattan, bi-weekly, on Wednesdays, commencing 10:00 A.M., and other days, times and location as warranted.

Landmarks Preservation Commission

Meets in the Hearing Room, Municipal Building, 9th Floor North, 1 Centre Street in Manhattan on approximately three Tuesday's each month, commencing at 9:30 A.M. unless otherwise noticed by the Commission. For current meeting dates, times and agendas, please visit our website at www.nyc.gov/landmarks.

Employees' Retirement System

Meets in the Boardroom, 22nd Floor, 335 Adams Street, Brooklyn, New York 11201, at 9:30 A.M., on the third Thursday of each month, at the call of the Chairman.

Housing Authority

Board Meetings take place every other Wednesday at 10:00 A.M. in the Board Room on the 12th Floor of 250 Broadway, New York, New York (unless otherwise noted). For Board Meeting dates and times, please visit NYCHA's Website at nyc.gov/nycha or contact the Office of the Secretary at (212) 306-6088. Copies of the Calendar are available on NYCHA's Website or can be picked up at the Office of the Secretary at 250 Broadway, 12th Floor, New York, New York, no earlier than 3:00 P.M. on the Friday before the upcoming Wednesday Board Meeting. Copies of the Disposition are also available on NYCHA's Website or can be picked up at the Office of the Secretary no earlier than 3:00 P.M. on the Thursday after the Board Meeting.

Any changes to the schedule will be posted here and on NYCHA's Website to the extent practicable at a reasonable time before the meeting. These meetings are open to the public. Pre-registration at least 45 minutes before the scheduled Board Meeting is required by all speakers. Comments are limited to the items on the Calendar. Speaking time will be limited to three minutes. The public comment period will conclude upon all speakers being heard or at the expiration of 30 minutes allotted by law for public comment, whichever occurs first. Any person requiring a reasonable accommodation in order to participate in the Board Meeting, should contact the Office of the Secretary at (212) 306-6088 no later than five business days before the Board Meeting. For additional information, please visit NYCHA's Website or contact (212) 306-6088.

Parole Commission

Meets at its office, 100 Centre Street, Manhattan, New York 10013, on Thursday, at 10:30 A.M.

Board of Revision of Awards

Meets in Room 603, Municipal Building, Manhattan, New York 10007, at the call of the Chairman.

Board of Standards and Appeals

Meets at 40 Rector Street, 6th Floor, Hearing Room "E" on Tuesdays at 10:00 A.M. Review Sessions begin at 9:30 A.M. and are customarily held on Mondays preceding a Tuesday public hearing in the BSA conference room on the 9th Floor of 40 Rector Street. For changes in the schedule, or additional information, please call the Application Desk at (212) 513-4670 or consult the bulletin board at the Board's Offices, at 40 Rector Street, 9th Floor.

Tax Commission

Meets in Room 936, Municipal Building, Manhattan, New York 10007, each month at the call of the President.

QUEENS BOROUGH PRESIDENT

PUBLIC HEARINGS

Notice is hereby given that a Public Hearing will be held by the Borough President of Queens, Helen Marshall, on **Thursday, February 3, 2011** at 10:30 A.M., in the Borough Presidents Conference Room located at 120-55 Queens Boulevard, Kew Gardens, New York 11424, on the following items:

NOTE: Individuals requesting Sign Language Interpreters should contact the Borough President's Office, (718) 286-2860, TDD users should call (718) 286-2656, no later than FIVE BUSINESS DAYS PRIOR TO THE PUBLIC HEARING.

CD06 - BSA #164-60 BZ — IN THE MATTER of an application submitted by Carl A. Sulfaro, Esq. on behalf of Steven Scott, Inc., pursuant to Section 11-411 of the NYC Zoning Resolution, to extend the term of a previously granted variance for an additional period of ten years beyond April 10, 2009 for an existing gasoline service station with accessory uses and to waive the rules of procedure in a C1-3/R3-2 district located at **100-20 Metropolitan Avenue**, Block 3895, Lot 32, Zoning Map 14b, Forest Hills, Borough of Queens.

CD11 - BSA #259-08 BZ — IN THE MATTER of an application submitted by Jeffrey A. Chester/Einbinder & Dunn on behalf of AAC Douglaston Plaza LLC, pursuant to Section 11-413 of the NYC Zoning Resolution, to reopen and amend an existing variance allowing the expansion of a non-conforming Use Group 6 supermarket use removing the C1 zoning district parameters on signs and replacing it with C4 zoning regulations in an R4 district located at **242-02 61st Avenue**, Block 8286, Lot 185, Zoning Map 11b, Douglaston, Borough of Queens.

CD11 - BSA #201-08 BZ — IN THE MATTER of an application submitted by Rothkrug, Rothkrug & Spector LLP on behalf of For Our Children, Inc., pursuant to Section 72-21 of the NYC Zoning Resolution, to permit the development a one story office building (U.G. 6) in an R3X district located at **40-38 216th Street**, Block 6290, Lot 70, Zoning Map 11a, Bayside, Borough of Queens.

CD07 - BSA #192-10 BZ — IN THE MATTER of an application submitted by Vincent L. Petraro, PLLC on behalf of Jia Ye Realty, LLC, pursuant to Section 73-66 of the NYC Zoning Resolution, for a waiver of the height restriction within the Flight Obstruction Area to facilitate the construction of a 12-story hotel building in a C4-3 district located at **36-27 Prince Street**, Block 4971, Lot 8, Zoning Map 10a, Flushing, Borough of Queens.

CD07 - BSA #193-10 BZ — IN THE MATTER of an application submitted by Vincent L. Petraro, PLLC on behalf of The Leavitt Street, LLC, pursuant to Section 73-66 of the NYC Zoning Resolution, for a waiver of the height restriction within the Flight Obstruction Area to facilitate the construction of a 12-story hotel building in a C4-3 district located at **36-16 Prince Street**, Block 4962, Lot 4, Zoning Map 10a, Flushing, Borough of Queens.

j28-f3

STATEN ISLAND BOROUGH PRESIDENT

PUBLIC MEETING

Notice of Public Meeting, Wednesday, February 2, 2011, Staten Island Borough Board, Conference Room 122 at 5:30 P.M., Staten Island Borough Hall, Stuyvesant Place, Staten Island, New York 10301.

j27-f2

CITY COUNCIL

HEARINGS

HEARING BY THE COMMITTEE ON RULES, PRIVILEGES AND ELECTIONS

THE COMMITTEE ON RULES, PRIVILEGES AND ELECTIONS WILL HOLD A HEARING ON WEDNESDAY, FEBRUARY 2, AT 10:30 A.M. IN THE 16TH FLOOR COMMITTEE ROOM AT 250 BROADWAY, NEW YORK, NY 10007 ON THE FOLLOWING MATTERS:

Designation

- Pre-considered-M, Diane Lacey, Council

candidate for re-designation and subsequent re-appointment by the Mayor to the **New York City Health and Hospitals Corporation** Board of Directors to serve for the remainder of a five-year term that will expire on March 20, 2014.

- **Pre-considered-M, Josephine Bolus**, Council candidate for re-designation and subsequent re-appointment by the Mayor to the **New York City Health and Hospitals Corporation** Board of Directors to serve for the remainder of a five-year term that will expire on March 20, 2013.
- **Pre-considered-M, Robert F. Nolan**, Council candidate for designation and subsequent appointment by the Mayor to the **New York City Health and Hospitals Corporation** Board of Directors to serve for the remainder of a five-year term that will expire on March 20, 2012.

AND SUCH OTHER BUSINESS AS MAY BE NECESSARY

A Calendar of speakers will be established in advance. Persons interested in being heard should write to the Honorable Christine C. Quinn, Speaker of the City Council, City Hall, New York, New York 10007, setting forth their name, representation and viewpoints.

Michael M. McSweeney
City Clerk, Clerk of the Council

j26-f2

COMMUNITY BOARDS

■ PUBLIC HEARINGS

PUBLIC NOTICE IS HEREBY GIVEN THAT the following matters have been scheduled for public hearing by Community Boards:

BOROUGH OF STATEN ISLAND

COMMUNITY BOARD NO. 02 - Tuesday, February 1, 2011, 7:30 P.M., 460 Brielle Avenue (Lou Caravone Bldg.), Staten Island, NY

BSA# 289-99-BZ

Premises: 265 Hull Avenue
Special Order Calendar (SOC) application to request an extension of term of variance for a parking lot in an R3-1 zoning district, accessory to a permitted commercial use building in a commercial zoning district. Application was previously granted by the Board of Standards and Appeals on December 12, 2000.

j26-f1

FRANCHISE AND CONCESSION REVIEW COMMITTEE

■ MEETING

PUBLIC NOTICE IS HEREBY GIVEN THAT the Franchise and Concession Review Committee will hold a Public Meeting on Wednesday, February 9, 2011 at 2:30 P.M. at 22 Reade Street, Spector Hall, Borough of Manhattan.

NOTE: Individuals requesting Sign Language Interpreters should contact the Mayor's Office of Contracts Services, Public Hearings Unit, 253 Broadway, 9th Floor, New York, NY 10007, (212) 788-7490, no later than SEVEN (7) BUSINESS DAYS PRIOR TO THE PUBLIC MEETING. TDD users should call Verizon relay service.

☛ j31-f9

LABOR RELATIONS

■ MEETING

The New York City Deferred Compensation Plan Board will hold its monthly meeting on Wednesday, February 2, 2011 from 10:00 A.M. to 12:00 P.M. The meeting will be held at 40 Rector Street, 3rd Floor, NYC.

☛ j31-f2

LANDMARKS PRESERVATION COMMISSION

■ PUBLIC HEARINGS

NOTICE IS HEREBY GIVEN THAT PURSUANT to the provisions of 3020 of the New York City Charter and Chapter 3 of Title 24 of the Administrative Code of the City of New York (Sections 25-303 and 25-313) that on **Tuesday, February 1, 2011 at 9:30 A.M.**, at the Landmarks Preservation Commission will conduct a *public hearing* in the Public Meeting Room of the Landmarks Preservation Commission, located at The Municipal Building, 1 Centre Street, 9th Floor North, City of New York with respect to the following proposed Landmark and Landmark Site. Any person requiring reasonable accommodation in order to participate in the hearing should call or write the Landmarks Preservation Commission, [Municipal Building, 1 Centre Street, 9th Floor North, New York, NY 10007, (212) 669-7700] no later than five (5) business days before the hearing. There will also be a public meeting on that day.

ITEM TO BE HEARD

BOROUGH OF MANHATTAN

LP-2467

MANUFACTURERS TRUST COMPANY BUILDING, FIRST AND SECOND FLOOR INTERIORS, 510 Fifth Avenue, (aka 508-514 Fifth Avenue; 2 West 43rd Street), Borough of Manhattan, consisting of the entrance vestibule and lobby at the Fifth Avenue corner, the banking room, the 43rd Street entrance lobby, the corridor in front of the bank vault, and

the escalators leading from the first floor to the second floor; second floor interior consisting of the banking room; and the fixtures and interior components of these spaces, including but not limited to, wall surfaces; ceiling surfaces; floor surfaces; columns; teller counters; planters, Mosler safe door; and sculptured metal screen; 508-514 Fifth Avenue, Manhattan.

Landmark Site: Borough of Manhattan Tax Map Block 1258, Lot 40

j18-31

NOTICE IS HEREBY GIVEN that pursuant to the provisions of Title 25, chapter 3 of the Administrative Code of the City of New York (Sections 25-307, 25-308, 25-309, 25-313, 25-318, 25-320) (formerly Chapter 8-A, Sections 207-6.0, 207-7.0, 207-12.0, 207-17.0, and 207-19.0), on Tuesday, **February 1, 2011 at 9:30 A.M.** in the morning of that day, a public hearing will be held in the Conference Room at 1 Centre Street, 9th Floor, Borough of Manhattan with respect to the following properties and then followed by a public meeting. Any person requiring reasonable accommodation in order to participate in the hearing or attend the meeting should call or write the Landmarks Commission no later than five (5) business days before the hearing or meeting.

CERTIFICATE OF APPROPRIATENESS
BOROUGH OF MANHATTAN 11-4330 - Block 178, lot 19-227 West Broadway - Tribeca East Historic District
Two dwellings originally built circa 1810, subsequently combined, and highly altered in the twentieth century. Application is to alter the ground floor, and install an awning. Community District 1.

BINDING REPORT
BOROUGH OF MANHATTAN 11-5566 - Block 134, lot 7501-253-256 Broadway - (former) Home Life Insurance Company Building-Individual Landmark
A neo-Renaissance style office Building designed by George Edward Harding & Gooch in 1892-94, and altered in 1936 by Ely Jacques Kahn and in 1963-69 by Sapolsky & Slobodie. Application is to modify window openings and install windows. Community District 1.

CERTIFICATE OF APPROPRIATENESS
BOROUGH OF MANHATTAN 09-2330 - Block 552, lot 63-69 Washington Place - Greenwich Village Historic District
A Greek revival style house built in 1842. Application is to construct a rear yard addition and replace a window. Zoned R7-2. Community District 2.

CERTIFICATE OF APPROPRIATENESS
BOROUGH OF MANHATTAN 11-5240 - Block 615, lot 73-8 Jane Street - Greenwich Village Historic District
A Greek Revival style rowhouse built in 1843. Application is to excavate the cellar and construct a rooftop addition. Zoned R6/C1-6. Community District 2.

CERTIFICATE OF APPROPRIATENESS
BOROUGH OF MANHATTAN 07-7200 - Block 624, lot 56-57 Bank Street - Greenwich Village Historic District
A Greek Revival style rowhouse built in 1842. Application is to legalize the replacement of ironwork at the areaway and stoop without Landmarks Preservation Commission permits. Community District 2.

CERTIFICATE OF APPROPRIATENESS
BOROUGH OF MANHATTAN 11-5079 - Block 553, lot 6-388 6th Avenue - Greenwich Village Historic District
A Modern style bank building built in 1941 and altered in 1955 and 1969. Application is to install illuminated signage. Community District 2.

CERTIFICATE OF APPROPRIATENESS
BOROUGH OF MANHATTAN 11-5524 - Block 574, lot 1-442 6th Avenue, aka 71 West 10th Street - Greenwich Village Historic District
A house built in 1834-35. Application is to alter the ground floor and install rooftop mechanical equipment, storefront infill and signage. Community District 2.

CERTIFICATE OF APPROPRIATENESS
BOROUGH OF MANHATTAN 11-5054 - Block 515, lot 25-155 Wooster Street - SoHo-Cast Iron Historic District
A Classical Revival style store and loft building designed by George F. Pelham and built in 1897-1898. Application is to establish a Master Plan governing the future installation of painted wall signs. Zoned M1-5A. Community District 2.

CERTIFICATE OF APPROPRIATENESS
BOROUGH OF MANHATTAN 11-4284 - Block 823, lot 76-62 West 22nd Street - Ladies' Mile Historic District
A converted dwelling, built in 1849. Application is to install storefront infill and signage. Community District 5.

CERTIFICATE OF APPROPRIATENESS
BOROUGH OF MANHATTAN 09-8008 - Block 1168, lot 56-250 West 77th Street - Hotel Belleclaire - Individual Landmark
An Art Nouveau/Secessionist style hotel designed by Emery Roth and built in 1901-03. Application is to install an entrance marquee. Community District 7.

CERTIFICATE OF APPROPRIATENESS
BOROUGH OF MANHATTAN 11-4892 - Block 1211, lot 63-180 West 81st Street - Upper West Side/Central Park West Historic District
A Renaissance/Romanesque Revival style apartment building built in 1889-90 designed by A.B. Ogden & Son. Application is to legalize painting limestone without Landmarks Preservation Commission permits. Community District 7.

CERTIFICATE OF APPROPRIATENESS
BOROUGH OF MANHATTAN 11-5447 - Block 1128, lot 1-329 Columbus Avenue - Upper West Side/Central Park West Historic District
A Renaissance Revival style apartment building designed by Lamb & Rich built in 1895-98. Application is to install signage. Community District 7.

CERTIFICATE OF APPROPRIATENESS
BOROUGH OF MANHATTAN 11-4240 - Block 1185, lot 25-333 West End Avenue - West End-Collegiate Historic District
A neo-Venetian Gothic style apartment building designed by Emery Roth and built in 1925. Application is to legalize the installation of AC condensers without Landmarks Preservation Commission permits. Community District 7.

CERTIFICATE OF APPROPRIATENESS
BOROUGH OF MANHATTAN 11-1047 - Block 1416, lot 8-215 East 61st Street - Treadwall Farm Historic District
A rowhouse designed by A. & S. Bussell and built in 1875 and later altered. Application is to construct a rear yard addition, replace windows and alter the facade. Zoned R8B. Community District 8.

CERTIFICATE OF APPROPRIATENESS
BOROUGH OF MANHATTAN 10-8688 - Block 1388, lot 7501-923 Fifth Avenue - Upper East Side Historic District
An apartment building designed by Sylvan Bien and built in 1949-51. Application is to alter window openings and construct terrace trellises. Community District 8.

BINDING REPORT
BOROUGH OF MANHATTAN 11-5145 - Block 1609, lot 1-1220 Fifth Avenue - Museum of the City of New York - Individual Landmark
A late Georgian style museum building designed by Joseph H. Freedlander and built in 1928-30. Application is to install signage in the courtyard. Community District 11.

CERTIFICATE OF APPROPRIATENESS
BOROUGH OF BROOKLYN 11-2279 - Block 1965, lot 9-51 Cambridge Place - Clinton Hill Historic District
An Italianate style rowhouse built c.1856. Application is to excavate a portion of the rear yard. Zoned R-6. Community District 2.

CERTIFICATE OF APPROPRIATENESS
BOROUGH OF BROOKLYN 11-0403 - Block 1062, lot 8-29 8th Avenue - Park Slope Historic District
A Romanesque Revival style rowhouse designed by Charles Werner and built in 1888. Application is to legalize a roof deck constructed in non-compliance with Certificate of No Effect 10-1268. Community District 6.

CERTIFICATE OF APPROPRIATENESS
BOROUGH OF BROOKLYN 11-5094 - Block 1103, lot 12-446 14th Street - Park Slope Historic District
A late Romanesque Revival style rowhouse built in 1894-95. Application is to legalize painting the facade and the installation of a lamppost without Landmarks Preservation Commission permits. Community District 6.

j19-f1

TRANSPORTATION

■ PUBLIC HEARINGS

NOTICE IS HEREBY GIVEN, pursuant to law, that the following proposed revocable consents, have been scheduled for a public hearing by the New York City Department of Transportation. The hearing will be held at 55 Water Street, 7th Floor, Room 707 commencing at 2:00 P.M. on Wednesday, February 2, 2011. Interested parties can obtain copies of proposed agreements or request sign-language interpreters (with at least seven days prior notice) at 55 Water Street, 9th Floor SW, New York, NY 10041, or by calling (212) 839-6550.

#1 In the matter of a proposed revocable consent authorizing Ben Hansen and Christina Hansen to construct, maintain and use a stoop, stair and planted area on the south sidewalk of State Street, between Bond and Nevins Streets, in the Borough of Brooklyn. The proposed revocable consent is for a term of ten years from the date of approval by the Mayor to June 30, 2021 and provides among other terms and conditions for compensation payable to the city according to the following schedule:

From the date Approval by the Mayor to June 30, 2011 - \$543/annum

For the period July 1, 2011 to June 30, 2012 - \$560
For the period July 1, 2012 to June 30, 2013 - \$577
For the period July 1, 2013 to June 30, 2014 - \$594
For the period July 1, 2014 to June 30, 2015 - \$611
For the period July 1, 2015 to June 30, 2016 - \$628
For the period July 1, 2016 to June 30, 2017 - \$645
For the period July 1, 2017 to June 30, 2018 - \$662
For the period July 1, 2018 to June 30, 2019 - \$679
For the period July 1, 2019 to June 30, 2020 - \$696
For the period July 1, 2010 to June 30, 2011 - \$713

The maintenance of a security deposit in the sum of \$5,000 and the filing of an insurance policy in the minimum amount of \$250,000/\$1,000,000 for bodily injury and property damage for each occurrence in the aggregate amount of \$100,000.

#2 In the matter of a proposed revocable consent authorizing Joseph LoMaglio to continue to maintain and use a fenced-in area on the north sidewalk of Charles Street, west of Seventh Avenue South, in the Borough of Manhattan. The proposed revocable consent is for a term of ten years from the date of approval by the Mayor to June 30, 2021 and provides among other terms and condition for compensation payable to the city according to the following schedule:

For the period from July 1, 2011 to June 30, 2021 - \$25/annum.

The maintenance of a security deposit in the sum of \$250 and the filing of filing of an insurance policy in the minimum amount of \$250,000/\$1,000,000 for bodily injury and property damage for each occurrence in the aggregate amount of \$100,000.

#3 In the matter of a proposed revocable consent authorizing Century 21 Department Stores, LLC, to continue to maintain and use two conduits under and across 87th Street, east of Forth Avenue, in the Borough of Brooklyn. The proposed revocable consent is for a term of ten years from July 1, 2011 to June 30, 2021 and provides among other terms and conditions for compensation payable to the following schedule:

For the period July 1, 2011 to June 30, 2012 - \$4,765
For the period July 1, 2012 to June 30, 2013 - \$4,897
For the period July 1, 2013 to June 30, 2014 - \$5,038
For the period July 1, 2014 to June 30, 2015 - \$5,179
For the period July 1, 2015 to June 30, 2016 - \$5,320
For the period July 1, 2016 to June 30, 2017 - \$5,461

For the period July 1, 2017 to June 30, 2018 - \$5,602
 For the period July 1, 2018 to June 30, 2019 - \$5,743
 For the period July 1, 2019 to June 30, 2020 - \$5,884
 For the period July 1, 2020 to June 30, 2021 - \$6,025

the maintenance of a security deposit in the sum of \$6,000 and the filing of an insurance policy in the minimum amount of \$250,000/\$1,000,000 for bodily injury and property damage for each occurrence in the aggregate amount of \$100,000.

#4 In the matter of a proposed revocable consent authorizing Bolivar Apartment Corp. to continue to maintain and use planted areas on the west sidewalk of Central Park West, north of West 83rd Street, and on the north sidewalk of West 83rd Street, west of Central Park West, in the Borough of Manhattan. The proposed revocable consent is for a term of ten years from July 1, 2011 to June 30, 2021 and provides among other terms and condition for compensation payable to the city according to the following schedule:

For the period from July 1, 2011 to June 30, 2021 - \$775/annum.

the maintenance of a security deposit in the sum of \$4,000 and the filing of an insurance policy in the minimum amount of \$250,000/\$1,000,000 for bodily injury and property damage for each occurrence in the aggregate amount of \$100,000.

#5 In the matter of a proposed revocable consent authorizing Consolidated Edison Company of New York, Inc. to maintain and use security fences, barriers, bollards and a guard booth at East River Generating Station, located between Avenue C and FDR Drive and East 13th and East 15th Streets, in the Borough of Manhattan. The proposed revocable consent is for a term of ten years from the date of approval by the Mayor to June 30, 2021.

There shall be no compensation required for this revocable consent

the maintenance of a security deposit in the sum of \$20,000 and the filing of an insurance policy in the minimum amount of \$250,000/\$1,000,000 for bodily injury and property damage for each occurrence in the aggregate amount of \$100,000.

j12-f2



SUPREME COURT

■ NOTICE

**RICHMOND COUNTY
 A PART 74
 NOTICE OF PETITION
 INDEX NUMBER (CY) 4002/11**

In the Matter of the Application of the CITY OF NEW YORK, relative to acquire title in fee simple to all or parts of,

ALBEE AVENUE

from Amboy Road to approximately 155 feet north of Amboy Road,

AMBOY ROAD

from Alvine Avenue to approximately 20 feet east of Poillon Avenue,

ANNADALE ROAD

from Amboy Road to Approximately 104 feet northeast of Furman Street,

COMMUNITY LANE

from Amboy Road to approximately 10 feet south of Amboy Road,

FURMAN STREET

from Annadale Road to approximately 18 feet southeast of Annadale Road,

PHILIP AVENUE

from Amboy Road to approximately 10 feet south of Amboy Road,

POILLON AVENUE

from Annadale Road to approximately 97 feet southeast of Annadale Road,

POILLON AVENUE

from Amboy Road to approximately 8 feet south of Amboy Road,

in the Borough of Staten Island, City of State of New York

PLEASE TAKE NOTICE that the Corporation Counsel of the City of New York intends to make application to the Supreme Court of the State of New York, Richmond County, IA Part 74, for certain relief.

The application will be made at the following time and place: At 360 Adams Street, 5th Floor, Room 538 in the Borough of Brooklyn, City and State of New York, on February 24, 2011 at 2:30 P.M., or as soon thereafter as counsel can be heard.

The application is for an order:

1) authorizing the City to file an acquisition map in the Office of the Clerk of Richmond County;

2) directing that upon the filing of said map, title to the property sought to be acquired shall vest in the City;

3) providing that just compensation therefor be ascertained and determined by the Supreme Court without a jury; and

4) providing that notices of claim must be served and filed within one calendar year from the vesting date.

The City of New York, in this proceeding, intends to acquire title in fee simple to all or parts of certain real property, where not heretofore acquired for the reconstruction of roadways, including the installation of traffic lights, sidewalks, and pedestrian ramps, in the Borough of Staten Island, City and State of New York.

The description of the real property to be acquired is as follows:

In the matter of describing the metes and bounds of certain parcels of land located in the bed of Amboy Road (80 feet wide) between Alvine Avenue (80 feet wide) and Pillon Avenue (80 feet wide) and Annadale Road (80 feet wide) between Amboy Road (80 feet wide) and Pine Terrace (80 feet wide), in which all streets mentioned are as laid out on the "City Map" of the City of New York, Borough of Staten Island, follows:

DAMAGE PARCEL 1

PART OF LOT 111 IN BLOCK 6511

Beginning at the northeastern corner of Lot 111, Block 6511;

1. Running thence southeasterly, for 5.05 feet to an angle point;
2. Thence continuing southwesterly, forming an interior angle of 82 degrees 11 minutes 42 seconds with the last mentioned course, for 112.22 feet to an angle point;
3. Thence continuing northerly, forming an interior angle of 90 degrees 31 minutes 13 seconds with the last mentioned course, for 5.00 feet to an angle point;
4. Thence continuing northeasterly, forming an interior angle of 89 degrees 28 minutes 47 seconds with the last mentioned course, for 111.58 feet to the point of place of beginning.

This damage parcel consists of a portion of tax lot 111 in Staten Island tax block 6511 as shown on the "tax map" of the City of New York, Borough of Staten Island, as said "tax map" existed on December 7, 2008, and comprises an area of 559.5 square feet or 0.0128 acres.

DAMAGE PARCEL 2

PART OF LOT 30 IN BLOCK 6469

Beginning at the northwestern corner of Lot 30, Block 6469;

1. Running thence southeasterly, for 132.42 feet to an angle point;
2. Thence continuing southerly, forming an interior angle of 108 degrees 18 minutes 54 seconds with the last mentioned course, for 7.92 feet to an angle point;
3. Thence continuing northwesterly, forming an interior angle of 71 degrees 16 minutes 02 seconds with the last mentioned course, for 53.34 feet to a point of curvature;
4. Thence continuing westerly, on the arc of a circle, curving to the left, the radius of which is 300.00 feet, for 67.02 feet to a point.
5. Thence continuing northwesterly, forming an interior angle of 124 degrees 30 minutes 31 seconds with the tangent of the last mentioned course, for 20.63 feet to the point or place of beginning.

This damage parcel consists of a portion of tax lot 30 in Staten Island tax block 6469 as shown on the "tax map" of the City of New York, Borough of Staten Island, as said "tax map" existed on December 7, 2008, and comprises an area of 1,109.6 square feet or 0.0255 acres.

DAMAGE PARCEL 3

PART OF LOT 37 IN BLOCK 6469

Beginning at the northwestern corner of Lot 37, Block 6469;

1. Running thence southeasterly, for 29.50 feet to an angle point;
2. Thence continuing southerly, forming an interior angle of 127 degrees 45 minutes 13 seconds with the last mentioned course, for 10.71 feet to an angle point;
3. Thence continuing northwesterly, forming an interior angle of 50 degrees 36 minutes 56 seconds with the last mentioned course, for 33.58 feet to an angle point;
4. Thence continuing northerly, forming an interior angle of 109 degrees 56 minutes 46 seconds with the last mentioned course, for 7.92 feet to the point or place of beginning.

This damage parcel consists of a portion of tax lot 37 in Staten Island tax block 6469 as shown on the "tax map" of the City of New York, Borough of Staten Island, as said "tax map" existed on December 7, 2008, and comprises an area of 249.8 square feet or 0.0057 acres.

DAMAGE PARCEL 4

PART OF LOT 39 IN BLOCK 6469

Beginning at the northwestern corner of Lot 39, Block 6469;

1. Running thence easterly, for 43.00 feet to an angle point;
2. Thence continuing southerly, forming an interior angle of 127 degrees 45 minutes 13 seconds with the last mentioned course, for 13.84 feet to an angle point;
3. Thence continuing westerly, forming an interior angle of 48 degrees 27 minutes 27 seconds with the last mentioned course, for 31.69 feet to an angle point;

4. Thence continuing westerly, forming an interior angle of 182 degrees 09 minutes 28 seconds with the last mentioned course, for 13.30 feet to an angle point;
5. Thence continuing northerly, forming an interior angle of 129 degrees 23 minutes 05 seconds with the last mentioned course, for 10.71 feet to the point or place of beginning.

This damage parcel consists of a portion of tax lot 39 in Staten Island tax block 6469 as shown on the "tax map" of the City of New York, Borough of Staten Island, as said "tax map" existed on December 7, 2008, and comprises an area of 409.5 square feet or 0.0094 acres.

DAMAGE PARCEL 5

PART OF LOT 43 IN BLOCK 6469

Beginning at the northwestern corner of Lot 43, Block 6469;

1. Running thence southeasterly, for 115.10 feet to an angle point;
2. Thence continuing southerly, forming an interior angle of 127 degrees 45 minutes 15 seconds with the last mentioned course, for 24.00 feet to an angle point;
3. Thence continuing northwesterly, forming an interior angle of 48 degrees 27 minutes 25 seconds with the last mentioned course, for 121.59 feet to an angle point;
4. Thence continuing northerly, forming an interior angle of 131 degrees 32 minutes 33 seconds with the last mentioned course, for 13.84 feet to the point or place of beginning.

This damage parcel consists of a portion of tax lot 43 in Staten Island tax block 6469 as shown on the "tax map" of the City of New York, Borough of Staten Island, as said "tax map" existed on December 7, 2008, and comprises an area of 1,722.0 square feet or 0.0395 acres.

DAMAGE PARCEL 6

PART OF LOT 46 IN BLOCK 6469

Beginning at the northwestern corner of Lot 46, Block 6469;

1. Running thence southeasterly, for 171.79 feet to an angle point;
2. Thence continuing southerly, forming an interior angle of 128 degrees 32 minutes 03 seconds with the last mentioned course, for 19.01 feet to an angle point;
3. Thence continuing westerly, forming an interior angle of 74 degrees 04 minutes 27 seconds with the last mentioned course, for 26.99 feet to an angle point;
4. Thence continuing northerly, forming an interior angle of 105 degrees 23 minutes 34 seconds with the last mentioned course, for 12.20 feet to an angle point;
5. Thence continuing westerly, forming an interior angle of 240 degrees 02 minutes 18 seconds with the last mentioned course, for 12.94 feet to an angle point;
6. Thence continuing westerly, forming an interior angle of 177 degrees 45 minutes 41 seconds with the last mentioned course, for 53.71 feet to an angle point;
7. Thence continuing westerly, forming an interior angle of 172 degrees 29 minutes 48 seconds with the last mentioned course, for 44.12 feet to an angle point;
8. Thence continuing westerly, forming an interior angle of 179 degrees 27 minutes 03 seconds with the last mentioned course, for 26.65 feet to an angle point;
9. Thence continuing westerly, forming an interior angle of 173 degrees 00 minutes 50 seconds with the last mentioned course, for 1.42 feet to an angle point;
10. Thence continuing northerly, forming an interior angle of 131 degrees 32 minutes 35 seconds with the last mentioned course, for 24.00 feet to the point or place of beginning.

This damage parcel consists of a portion of tax lot 46 in Staten Island tax block 6469 as shown on the "tax map" of the City of New York, Borough of Staten Island, as said "tax map" existed on December 7, 2008, and comprises an area of 3,553.2 square feet or 0.0816 acres.

DAMAGE PARCEL 7

PART OF LOT 1 IN BLOCK 6247

Beginning at the southeastern corner of Lot 1, Block 6247;

1. Running thence westerly, for 20.37 feet to an angle point;
2. Thence continuing westerly, forming an interior angle of 174 degrees 33 minutes 06 seconds with the last mentioned course, for 39.67 feet to an angle point;
3. Thence continuing northwesterly, forming an interior angle of 176 degrees 45 minutes 56 seconds with the last mentioned course, for 50.25 feet to an angle point;
4. Thence continuing northwesterly, forming an interior angle of 179 degrees 11 minutes 07 seconds with the last mentioned course, for 45.34 feet to an angle point;
5. Thence continuing northerly, forming an interior angle of 132 degrees 00 minutes 20 seconds with the last mentioned course, for 6.16 feet to an angle point;
6. Thence continuing southeasterly, forming an interior angle of 47 degrees 59 minutes 00 seconds with the last mentioned course, for 61.27 feet to an angle point;
7. Thence continuing southeasterly, forming an interior angle of 176 degrees 59 minutes 38 seconds with the last mentioned course, for 53.86 feet to an angle point;
8. Thence continuing easterly, forming an interior angle of 176 degrees 21 minutes 06 seconds with

- the last mentioned course, for 10.64 feet to an angle point;
9. Thence continuing easterly, forming an interior angle of 181 degrees 01 minutes 09 seconds with the last mentioned course, for 1.58 feet to an angle point;
 10. Thence continuing easterly, forming an interior angle of 175 degrees 23 minutes 43 seconds with the last mentioned course, for 26.65 feet to an angle point;
 11. Thence continuing southeasterly, forming an interior angle of 121 degrees 46 minutes 36 seconds with the last mentioned course, for 8.91 feet to the point or place of beginning.

This damage parcel consists of a portion of tax lot 1 in Staten Island tax block 6247 as shown on the "tax map" of the City of New York, Borough of Staten Island, as said "tax map" existed on December 7, 2008, and comprises an area of 837.1 square feet or 0.0192 acres.

**DAMAGE PARCEL 8
PART OF LOT 10 IN BLOCK 6247**

Beginning at the southeastern corner of Lot 1, Block 6247;

1. Running thence westerly, for 205.99 feet to an angle point;
2. Thence continuing northerly, forming an interior angle of 54 degrees 22 minutes 03 seconds with the last mentioned course, for 5.68 feet to an angle point;
3. Thence continuing easterly, forming an interior angle of 125 degrees 37 minutes 17 seconds with the last mentioned course, for 198.56 feet to an angle point;
4. Thence continuing southeasterly, forming an interior angle of 132 degrees 01 minutes 00 seconds with the last mentioned course, for 6.16 feet to the point or place of beginning.

This damage parcel consists of a portion of tax lot 10 in Staten Island tax block 6247 as shown on the "tax map" of the City of New York, Borough of Staten Island, as said "tax map" existed on December 7, 2008, and comprises an area of 930.4 square feet or 0.0214 acres.

**DAMAGE PARCEL 9
PART OF LOT 20 IN BLOCK 6247**

Beginning at the southeastern corner of Lot 20, Block 6247;

1. Running thence northwesterly, for 114.36 feet to an angle point;
2. Thence continuing northerly, forming an interior angle of 67 degrees 30 minutes 11 seconds with the last mentioned course, for 183.61 feet to an angle point;
3. Thence continuing easterly, forming an interior angle of 88 degrees 52 minutes 41 seconds with the last mentioned course, for 13.54 feet to an angle point;
4. Thence continuing southerly, forming an interior angle of 56 degrees 50 minutes 14 seconds with the last mentioned course, for 16.85 feet to an angle point;
5. Thence continuing southerly, forming an interior angle of 215 degrees 56 minutes 55 seconds with the last mentioned course, for 125.92 feet to a point of curvature;
6. Thence continuing southerly, on the arc of a circle, curving to the right, the radius of which is 28.26 feet, for 32.14 feet to a point of compound curvature;
7. Thence continuing southerly, on the arc of a circle, curving to the right, the radius of which is 10.00 feet, for 8.49 feet to a point tangency;
8. Thence continuing southeasterly, for 83.10 feet to an angle point;
9. Thence continuing southwesterly, forming an interior angle of 51 degrees 25 minutes 09 seconds with the last mentioned course, for 10.79 feet to the point or place of beginning.

This damage parcel consists of a portion of lot 20 in Staten Island tax block 6247 as shown on the "tax map" of the City of New York, Borough of Staten Island, as said "tax map" existed on December 7, 2008, and comprises an area of 2,087.3 square feet or 0.0479 acres.

**DAMAGE PARCEL 10
PART OF LOT 29 IN BLOCK 6247**

Beginning at the northeastern corner of Lot 29, Block 6247;

1. Running thence southeasterly, for 14.67 feet to an angle point;
2. Thence continuing southwesterly, forming an interior angle of 92 degrees 30 minutes 09 seconds with the last mentioned course, for 87.04 feet to an angle point;
3. Thence continuing northwesterly, forming an interior angle of 87 degrees 29 minutes 41 seconds with the last mentioned course, for 13.54 feet to an angle point;
4. Thence continuing northeasterly, forming an interior angle of 93 degrees 14 minutes 50 seconds with the last mentioned course, for 87.10 feet to the point or place of beginning;

This damage parcel consists of a portion of tax lot 29 in Staten Island tax block 6247 as shown on the "tax map" of the City of New York, Borough of Staten Island, as said "tax map" existed on December 7, 2008, and comprises an area of 1,226.9 square feet or 0.0282 acres.

**DAMAGE PARCEL 11
PART OF LOT 34 IN BLOCK 6247**

Beginning at the northeastern corner of Lot 34, Block 6247;

1. Running thence southeasterly, for 15.32 feet to an angle point;
2. Thence continuing southwesterly, forming an interior angle of 92 degrees 30 minutes 22 seconds with the last mentioned course, for 50.04 feet to an angle point;

3. Thence continuing westerly, forming an interior angle of 87 degrees 29 minutes 51 seconds with the last mentioned course, for 14.67 feet to an angle point;
4. Thence continuing northeasterly, forming an interior angle of 93 degrees 14 minutes 40 seconds with the last mentioned course, for 50.07 feet to the point or place of beginning.

This damage parcel consists of a portion of tax lot 34 in Staten Island tax block 6247 as shown on the "tax map" of the City of New York, Borough of Staten Island, as said "tax map" existed on December 7, 2008, and comprises an area of 749.8 square feet or 0.0172 acres.

**DAMAGE PARCEL 12
PART OF LOT 37 IN BLOCK 6247**

Beginning at the northeastern corner of Lot 37, Block 6247;

1. Running thence southeasterly, for 15.97 feet to an angle point;
2. Thence continuing southeasterly, forming an interior angle of 92 degrees 30 minutes 19 seconds with the last mentioned course, for 50.04 feet to an angle point;
3. Thence continuing westerly, forming an interior angle of 87 degrees 29 minutes 40 seconds with the last mentioned course, for 15.32 feet to an angle point;
4. Thence continuing northerly, forming an interior angle of 93 degrees 14 minutes 51 seconds with the last mentioned course, for 50.07 feet to the point or place of beginning.

This damage parcel consists of a portion of tax lot 37 in Staten Island tax block 6247 as shown on the "tax map" of the City of New York, Borough of Staten Island, as said "tax map" existed on December 7, 2008, and comprises an area of 782.2 square feet or 0.0180 acres.

**DAMAGE PARCEL 13
PART OF LOT 40 IN BLOCK 6247**

Beginning at the northeastern corner of Lot 40, Block 6247;

1. Running thence southeasterly, for 18.32 feet to an angle point;
2. Thence continuing southwesterly, forming an interior angle of 116 degrees 52 minutes 48 seconds with the last mentioned course, for 22.19 feet to an angle point;
3. Thence continuing northwesterly, forming an interior angle of 87 degrees 29 minutes 41 seconds with the last mentioned course, for 15.97 feet to an angle point;
4. Thence continuing northeasterly, forming an interior angle of 93 degrees 14 minutes 51 seconds with the last mentioned course, for 29.77 feet to the point or place of beginning.

This damage parcel consists of a portion of tax lot 40 in Staten Island tax block 6247 as shown on the "tax map" of the City of New York, Borough of Staten Island, as said "tax map" existed on December 7, 2008, and comprises an area of 418.7 square feet or 0.0096 acres.

**DAMAGE PARCEL 14
PART OF LOT 37 IN BLOCK 6247**

Beginning at the southeastern corner of Lot 37, Block 6247;

1. Running thence southwesterly, for 19.86 feet to an angle point;
2. Thence continuing northwesterly, forming an interior angle of 64 degrees 30 minutes 10 seconds with the last mentioned course, for 48.10 feet to an angle point;
3. Thence continuing southeasterly, forming an interior angle of 24 degrees 22 minutes 31 seconds with the last mentioned course, for 43.43 feet to the point or place of beginning.

This damage parcel consists of a portion of tax lot 37 in Staten Island tax block 6247 as shown on the "tax map" of the City of New York, Borough of Staten Island, as said "tax map" existed on December 7, 2008, and comprises an area of 431.1 square feet or 0.0099 acres.

**DAMAGE PARCEL 15
PART OF LOT 21 IN BLOCK 6246**

Beginning at the southeastern intersection of Annadale Road and Poillon Avenue;

1. Running thence northwesterly, for 24.85 feet to an angle point;
2. Thence continuing northeasterly, forming an interior angle of 117 degrees 37 minutes 22 seconds with the last mentioned course, for 48.06 feet to an angle point;
3. Thence continuing southeasterly, forming an interior angle of 89 degrees 58 minutes 41 seconds with the last mentioned course, for 22.09 feet to an angle point;
4. Thence continuing southwesterly, forming an interior angle of 89 degrees 57 minutes 03 seconds with the last mentioned course, for 59.57 feet to the point or place of beginning.

This damage parcel consists of a portion of tax lot 21 in Staten Island tax block 6246 as shown on the "tax map" of the City of New York, Borough of Staten Island, as said "tax map" existed on December 7, 2008, and comprises an area of 1,187.1 square feet or 0.0273 acres.

**DAMAGE PARCEL 16
PART OF LOT 30 IN BLOCK 6246**

Beginning at the southwestern intersection of Annadale Road and Furman Street;

1. Running thence southwesterly, for 115.43 feet to an angle point;
2. Thence continuing northwesterly, forming an interior angle of 90 degrees 02 minutes 57 seconds with the last mentioned course, for 22.09 feet to an angle point;

3. Thence continuing northeasterly, forming an interior angle of 90 degrees 01 minutes 19 seconds with the last mentioned course, for 128.05 feet to an angle point;
4. Thence continuing southeasterly, forming an interior angle of 75 degrees 39 minutes 47 seconds with the last mentioned course, for 27.77 feet to an angle point.
5. Thence continuing southwesterly, forming an interior angle of 89 degrees 24 minutes 29 seconds with the last mentioned course, for 6.74 feet to an angle point;
6. Thence continuing northwesterly, forming an interior angle of 90 degrees 29 minutes 48 seconds with the last mentioned course, for 3.03 feet to an angle point or place of beginning.

This damage parcel consists of a portion of tax lot 30 in Staten Island tax block 6246 as shown on the "tax map" of the City of New York, Borough of Staten Island, as said "tax map" existed on December 7, 2008, and comprises an area of 2,802.3 square feet or 0.0643 acres.

**DAMAGE PARCEL 17
PART OF LOT 108 IN BLOCK 6245**

Beginning at the southeastern intersection of Annadale Road and Furman Street;

1. Running thence northwesterly, for 8.54 feet to an angle point;
2. Thence continuing northeasterly, forming an interior angle of 105 degrees 58 minutes 23 seconds with the last mentioned course, for 104.02 feet to an angle point;
3. Thence continuing southeasterly, forming an interior angle of 74 degrees 01 minutes 37 seconds with the last mentioned course, for 8.73 feet to an angle point;
4. Thence continuing southwesterly, forming an interior angle of 105 degrees 52 minutes 27 seconds with the last mentioned course, for 103.97 feet to the point or place of beginning.

This damage parcel consists of a portion of tax lot 108 in Staten Island tax block 6245 as shown on the "tax map" of the City of New York, Borough of Staten Island, as said "tax map" existed on December 7, 2008, and comprises an area of 863.8 square feet or 0.0198 acres.

**DAMAGE PARCEL 18
PART OF LOT 222 IN BLOCK 6249**

Beginning at the southeastern corner of Lot 222, Block 6249;

1. Running thence southwesterly, for 4.71 feet to an angle point;
2. Thence continuing southwesterly, forming an interior angle of 179 degrees 09 minutes 57 seconds with the last mentioned course, for 103.81 feet to an angle point;
3. Thence continuing northwesterly, forming an interior angle of 72 degrees 21 minutes 17 seconds with the last mentioned course, for 22.36 feet to an angle point;
4. Thence continuing northeasterly, forming an interior angle of 107 degrees 35 minutes 30 seconds with the last mentioned course, for 9.67 feet to an angle point.
5. Thence continuing southeasterly, forming an interior angle of 89 degrees 56 minutes 17 seconds with the last mentioned course, for 3.43 feet to an angle point;
6. Thence continuing northeasterly, forming an interior angle of 270 degrees 00 minutes 00 seconds with the last mentioned course, for 97.50 feet to an angle point;
7. Thence continuing southeasterly, forming an interior angle of 72 degrees 58 minutes 43 seconds with the last mentioned course, for 18.42 feet to the point or place of beginning.

This damage parcel consists of a portion of tax lot 222 in Staten Island tax block 6249 as shown on the "tax map" of the City of New York, Borough of Staten Island, as said "tax map" existed on August 17, 2009, and comprises an area of 1,962.7 square feet or 0.0451 acres.

**DAMAGE PARCEL 19
PART OF LOT 174 IN BLOCK 6249**

Beginning at the eastern most corner of Lot 174, Block 6249;

1. Running thence southwesterly, for 31.50 feet to an angle point;
2. Thence continuing northwesterly, forming an interior angle of 72 degrees 21 minutes 15 seconds with the last mentioned course, for 22.39 feet to an angle point;
3. Thence continuing northeasterly, forming an interior angle of 107 degrees 35 minutes 42 seconds with the last mentioned course, for 31.49 feet to an angle point;
4. Thence continuing southeasterly, forming an interior angle of 72 degrees 24 minutes 30 seconds with the last mentioned course, for 22.36 feet to the point or place of beginning.

This damage parcel consists of a portion of tax lot 174 in Staten Island tax block 6249 as shown on the "tax map" of the City of New York, Borough of Staten Island, as said "tax map" existed on August 17, 2009, and comprises an area of 671.6 square feet or 0.0154 acres.

**DAMAGE PARCEL 20
PART OF LOT 214 IN BLOCK 6249**

Beginning at the southeastern corner of Lot 214, Block 6249;

1. Running thence southwesterly, for 158.96 feet to an angle point;
2. Thence continuing northwesterly, forming an interior angle of 72 degrees 21 minutes 09 seconds with the last mentioned course, for 18.05 feet to a point;
3. Thence continuing northeasterly on the arc of a

circle curving to the left, the radius of which is 2,634.48 feet, the tangent of which forms an interior angle of 106 degrees 03 minutes 54 seconds with the last mentioned course, for 91.28 feet to a point;

4. Thence continuing northeasterly, forming an interior angle of 179 degrees 34 minutes 26 seconds with the tangent of the last mentioned course, for 55.65 feet to an angle point;
5. Thence continuing northwesterly, forming an interior angle of 271 degrees 08 minutes 14 seconds with the last mentioned course, for 5.48 feet to an angle point;
6. Thence continuing northeasterly, forming an interior angle of 87 degrees 13 minutes 18 seconds with the last mentioned course, for 12.96 feet to an angle point;
7. Thence continuing northeasterly, forming an interior angle of 181 degrees 36 minutes 45 seconds with the last mentioned course, for 0.50 feet to an angle point;
8. Thence continuing southeasterly, forming an interior angle of 72 degrees 25 minutes 46 seconds with the last mentioned course, for 22.39 feet to a the point or place of beginning.

This damage parcel consists of a portion of tax lot 214 in Staten Island tax block 6249 as shown on the "tax map" of the City of New York, Borough of Staten Island, as said "tax map" existed on August 17, 2009, and comprises an area of 2,668.6 square feet or 0.0613 acres.

DAMAGE PARCEL 21

PART OF LOT 207 IN BLOCK 6249

Beginning at the southwestern corner of Lot 207, Block 6249;

1. Running thence northwesterly, for 19.09 feet to an angle point;
2. Thence continuing northeasterly, forming an interior angle of 105 degrees 28 minutes 16 seconds with the last mentioned course, for 138.22 feet to an angle point;
3. Thence continuing southeasterly, forming an interior angle of 74 degrees 31 minutes 18 seconds with the last mentioned course, for 18.05 feet to an angle point;
4. Thence continuing southwesterly, forming an interior angle of 105 degrees 53 minutes 41 seconds with the last mentioned course, for 138.50 feet to the point or place of beginning.

This damage parcel consists of a portion of tax lot 207 in Staten Island tax block 6249 as shown on the "tax map" of the City of New York, Borough of Staten Island, as said "tax map" existed on August 17, 2009, and comprises an area of 2,473.6 square feet or 0.0568 acres.

DAMAGE PARCEL 22

PART OF LOT 200 IN BLOCK 6249

Beginning at the northeastern intersection of Hoda Place and Annadale Road;

1. Running thence northeasterly, for 2.51 feet to an angle point;
2. Thence continuing southeasterly, forming an interior angle of 92 degrees 53 minutes 12 seconds with the last mentioned course, for 7.07 feet to an angle point;
3. Thence continuing northeasterly, forming an interior angle of 266 degrees 26 minutes 32 seconds with the last mentioned course, for 42.87 feet to an angle point;
4. Thence continuing southeasterly, forming an interior angle of 74 degrees 41 minutes 19 seconds with the last mentioned course, for 19.09 feet to an angle point.
5. Thence continuing southwesterly, forming an interior angle of 105 degrees 53 minutes 40 seconds with the last mentioned course, for 54.20 feet to an angle point;
6. Thence continuing northwesterly, forming an interior angle of 92 degrees 58 minutes 29 seconds with the last mentioned course, for 35.29 feet to an angle point;
7. Thence continuing northeasterly, forming an interior angle of 90 degrees 00 minutes 00 seconds with the last mentioned course, for 15.03 feet to an angle point.
8. Thence continuing southeasterly, forming an interior angle of 89 degrees 49 minutes 51 seconds with the last mentioned course, for 10.18 feet to the point or place of beginning.

This damage parcel consists of a portion of tax lot 200 in Staten Island tax block 6249 as shown on the "tax map" of the City of New York, Borough of Staten Island, as said "tax map" existed on August 17, 2009, and comprises an area of 1,339.5 square feet or 0.0308 acres.

DAMAGE PARCEL 23

PART OF LOT 200 IN BLOCK 6249

Beginning at the southern intersection of Hoda Place and Annadale Road;

1. Running thence northeasterly, for 1.07 feet to an angle point;
2. Thence continuing northwesterly, forming an interior angle of 272 degrees 53 minutes 12 seconds with the last mentioned course, for 7.15 feet to an angle point;
3. Thence continuing northeasterly, forming an interior angle of 90 degrees 00 minutes 00 seconds with the last mentioned course, for 15.00 feet to an angle point;
4. Thence continuing southeasterly, forming an interior angle of 90 degrees 00 minutes 00 seconds with the last mentioned course, for 33.73 feet to an angle point.
5. Thence continuing southwesterly, forming an interior angle of 87 degrees 01 minutes 31 seconds with the last mentioned course, for 28.26 feet to an

angle point;

6. Thence continuing northwesterly, forming an interior angle of 74 degrees 06 minutes 20 seconds with the last mentioned course, for 20.28 feet to an angle point;
7. Thence continuing northeasterly, forming an interior angle of 105 degrees 18 minutes 41 seconds with the last mentioned course, for 5.70 feet to an angle point.
8. Thence continuing northwesterly, forming an interior angle of 274 degrees 21 minutes 58 seconds with the last mentioned course, for 6.33 feet to the point or place of beginning.

This damage parcel consists of a portion of tax lot 200 in Staten Island tax block 6249 as shown on the "tax map" of the City of New York, Borough of Staten Island, as said "tax map" existed on August 17, 2009, and comprises an area of 700.6 square feet or 0.0161 acres.

DAMAGE PARCEL 24

PART OF LOT 38 IN BLOCK 6249

Beginning at the southeastern corner of Lot 38, Block 6249;

1. Running thence southwesterly, for 59.46 feet to an angle point;
2. Thence continuing northwesterly, forming an interior angle of 86 degrees 18 minutes 24 seconds with the last mentioned course, for 20.19 feet to an angle point;
3. Thence continuing northeasterly, forming an interior angle of 93 degrees 06 minutes 36 seconds with the last mentioned course, for 63.72 feet to an angle point;
4. Thence continuing southeasterly, forming an interior angle of 74 degrees 41 minutes 19 seconds with the last mentioned course, for 20.28 feet to the point or place of beginning.

This damage parcel consists of a portion of tax lot 40 in Staten Island tax block 6249 as shown on the "tax map" of the City of New York, Borough of Staten Island, as said "tax map" existed on August 17, 2009, and comprises an area of 1,222.2 square feet or 0.0281 acres.

DAMAGE PARCEL 25

PART OF LOT 33 IN BLOCK 6249

Beginning at the southeastern corner of Lot 33, Block 6249;

1. Running thence southeasterly, for 78.97 feet to an angle point;
2. Thence continuing northwesterly, forming an interior angle of 80 degrees 17 minutes 27 seconds with the last mentioned course, for 21.24 feet to an angle point;
3. Thence continuing northeasterly, forming an interior angle of 99 degrees 07 minutes 34 seconds with the last mentioned course, for 76.70 feet to an angle point;
4. Thence continuing southeasterly, forming an interior angle of 86 degrees 53 minutes 24 seconds with the last mentioned course, for 20.19 feet to the point or place of beginning.

This damage parcel consists of a portion of tax lot 33 in Staten Island tax block 6249 as shown on the "tax map" of the City of New York, Borough of Staten Island, as said "tax map" existed on August 17, 2009, and comprises an area of 1,599.7 square feet or 0.0367 acres.

DAMAGE PARCEL 26

PART OF LOT 30 IN BLOCK 6249

Beginning at the southeastern corner of Lot 30, Block 6249;

1. Running thence southwesterly, for 26.61 feet to an angle point;
2. Thence continuing southwesterly, forming an interior angle of 175 degrees 30 minutes 12 seconds with the last mentioned course, for 23.40 feet to an angle point;
3. Thence continuing northwesterly, forming an interior angle of 84 degrees 47 minutes 16 seconds with the last mentioned course, for 19.89 feet to an angle point;
4. Thence continuing northeasterly, forming an interior angle of 99 degrees 07 minutes 34 seconds with the last mentioned course, for 50.16 feet to an angle point;
5. Thence continuing southeasterly, forming an interior angle of 80 degrees 52 minutes 26 seconds with the last mentioned course, for 21.24 feet to the point or place of beginning.

This damage parcel consists of a portion of tax lot 30 in Staten Island tax block 6249 as shown on the "tax map" of the City of New York, Borough of Staten Island, as said "tax map" existed on August 17, 2009, and comprises an area of 1,042.9 square feet or 0.0239 acres.

DAMAGE PARCEL 27

PART OF LOT 25 IN BLOCK 6249

Beginning at the southeastern corner of Lot 25, Block 6249;

1. Running thence southwesterly, for 51.67 feet to an angle point;
2. Thence continuing southwesterly, forming an interior angle of 175 degrees 23 minutes 11 seconds with the last mentioned course, for 36.45 feet to an angle point;
3. Thence continuing northwesterly, forming an interior angle of 84 degrees 30 minutes 16 seconds with the last mentioned course, for 11.04 feet to an angle point;
4. Thence continuing northeasterly, forming an interior angle of 104 degrees 01 minutes 23 seconds with the last mentioned course, for 88.07 feet to an angle point;
5. Thence continuing southeasterly, forming an interior angle of 80 degrees 52 minutes 26 seconds with the last mentioned course, for 19.89 feet to the point or place of beginning.

This damage parcel consists of a portion of tax lot 25 in

Staten Island tax block 6249 as shown on the "tax map" of the City of New York, Borough of Staten Island, as said "tax map" existed on August 17, 2009, and comprises an area of 1,421.6 square feet or 0.0326 acres.

DAMAGE PARCEL 28

PART OF LOT 21 IN BLOCK 6249

Beginning at the southeastern corner of Lot 21, Block 6249;

1. Running thence southwesterly, for 17.89 feet to an angle point;
2. Thence continuing southwesterly, forming an interior angle of 163 degrees 38 minutes 20 seconds with the last mentioned course, for 57.11 feet to an angle point;
3. Thence continuing northeasterly, forming an interior angle of 03 degrees 50 minutes 51 seconds with the last mentioned course, for 44.50 feet to an angle point;
4. Thence continuing northeasterly, forming an interior angle of 201 degrees 02 minutes 28 seconds with the last mentioned course, for 30.64 feet to an angle point;
5. Thence continuing southeasterly, forming an interior angle of 75 degrees 58 minutes 37 seconds with the last mentioned course, for 11.04 feet to the point or place of beginning.

This damage parcel consists of a portion of tax lot 21 in Staten Island tax block 6249 as shown on the "tax map" of the City of New York, Borough of Staten Island, as said "tax map" existed on August 17, 2009, and comprises an area of 307.0 square feet or 0.0070 acres.

ROADWAY PARCEL

Beginning at the northwestern intersection of Alvine Avenue and Amboy Road;

1. Running thence northeasterly, for 281.11 feet to an angle point;
2. Thence continuing northwesterly, forming an interior angle of 297 degrees 58 minutes 58 seconds with the last mentioned course, for 1.47 feet to an angle point;
3. Thence continuing northeasterly, forming an interior angle of 63 degrees 23 minutes 16 seconds with the last mentioned course, for 38.04 feet to an angle point;
4. Thence continuing northwesterly, forming an interior angle of 266 degrees 08 minutes 08 seconds with the last mentioned course, for 167.56 feet to an angle point;
5. Thence continuing northeasterly, forming an interior angle of 90 degrees 10 minutes 20 seconds with the last mentioned course, for 80.00 feet to an angle point;
6. Thence continuing southeasterly, forming an interior angle of 89 degrees 49 minutes 44 seconds with the last mentioned course, for 148.52 feet to an angle point;
7. Thence continuing northeasterly, forming an interior angle of 275 degrees 34 minutes 55 seconds with the last mentioned course, for 60.29 feet to an angle point;
8. Thence continuing northeasterly, forming an interior angle of 179 degrees 59 minutes 49 seconds with the last mentioned course, for 20.10 feet to an angle point;
9. Thence continuing northeasterly, forming an interior angle of 180 degrees 00 minutes 16 seconds with the last mentioned course, for 40.19 feet to an angle point;
10. Thence continuing northeasterly, forming an interior angle of 179 degrees 59 minutes 54 seconds with the last mentioned course, for 62.57 feet to an angle point;
11. Thence continuing southeasterly, forming an interior angle of 101 degrees 04 minutes 22 seconds with the last mentioned course, for 11.50 feet to an angle point;
12. Thence continuing northeasterly, forming an interior angle of 258 degrees 57 minutes 31 seconds with the last mentioned course, for 75.00 feet to an angle point;
13. Thence continuing northeasterly, forming an interior angle of 183 degrees 50 minutes 52 seconds with the last mentioned course, for 44.50 feet to an angle point;
14. Thence continuing northeasterly, forming an interior angle of 201 degrees 02 minutes 28 seconds with the last mentioned course, for 314.98 feet to an angle point;
15. Thence continuing northwesterly, forming an interior angle of 274 degrees 21 minutes 58 seconds with the last mentioned course, for 6.33 feet to an angle point;
16. Thence continuing northeasterly, forming an interior angle of 86 degrees 18 minutes 17 seconds with the last mentioned course, for 1.07 feet to an angle point;
17. Thence continuing northwesterly, forming an interior angle of 272 degrees 53 minutes 12 seconds with the last mentioned course, for 7.15 feet to an angle point;
18. Thence continuing northeasterly, forming an interior angle of 90 degrees 00 minutes 00 seconds with the last mentioned course, for 15.00 feet to an angle point;
19. Thence continuing southeasterly, forming an interior angle of 90 degrees 00 minutes 00 seconds with the last mentioned course, for 42.04 feet to an angle point;
20. Thence continuing northeasterly, forming an interior angle of 265 degrees 49 minutes 37 seconds with the last mentioned course, for 30.08 feet to an angle point;
21. Thence continuing northwesterly, forming an interior angle of 274 degrees 10 minutes 23 seconds with the last mentioned course, for 44.23 feet to an

- angle point;
22. Thence continuing northeasterly, forming an interior angle of 90 degrees 00 minutes 03 seconds with the last mentioned course, for 15.03 feet to an angle point;
23. Thence continuing southeasterly, forming an interior angle of 89 degrees 49 minutes 51 seconds with the last mentioned course, for 10.18 feet to an angle point;
24. Thence continuing northeasterly, forming an interior angle of 267 degrees 16 minutes 56 seconds with the last mentioned course, for 2.51 feet to an angle point;
25. Thence continuing southeasterly, forming an interior angle of 92 degrees 53 minutes 12 seconds with the last mentioned course, for 7.07 feet to an angle point;
26. Thence continuing northeasterly, forming an interior angle of 266 degrees 26 minutes 32 seconds with the last mentioned course, for 42.87 feet to an angle point;
27. Thence continuing northeasterly, forming an interior angle of 182 degrees 08 minutes 44 seconds with the last mentioned course, for 138.22 feet to a point;
28. Thence continuing northeasterly, on the arc of a circle curving to the left, the radius of which is 2,634.48 feet, the tangent of which forms an interior angle of 180 degrees 36 minutes 11 seconds with the last mentioned course, for 91.28 feet to a point;
29. Thence continuing northeasterly, forming an interior angle of 179 degrees 34 minutes 26 seconds with the tangent of the last mentioned course, for 55.65 feet to an angle point;
30. Thence continuing northwesterly, forming an interior angle of 271 degrees 08 minutes 14 seconds with the last mentioned course, for 5.48 feet to an angle point;
31. Thence continuing northeasterly, forming an interior angle of 87 degrees 13 minutes 18 seconds with the last mentioned course, for 12.96 feet to an angle point;
32. Thence continuing northeasterly, forming an interior angle of 181 degrees 36 minutes 45 seconds with the last mentioned course, for 41.66 feet to an angle point;
33. Thence continuing southeasterly, forming an interior angle of 89 degrees 56 minutes 17 seconds with the last mentioned course, for 3.43 feet to an angle point;
34. Thence continuing northeasterly, forming an interior angle of 270 degrees 00 minutes 00 seconds with the last mentioned course, for 97.50 feet to an angle point;
35. Thence continuing southeasterly, forming an interior angle of 72 degrees 58 minutes 43 seconds with the last mentioned course, for 18.42 feet to an angle point;
36. Thence continuing southwesterly, forming an interior angle of 107 degrees 58 minutes 15 seconds with the last mentioned course, for 4.71 feet to an angle point;
37. Thence continuing southeasterly, forming an interior angle of 246 degrees 20 minutes 17 seconds with the last mentioned course, for 38.26 feet to an angle point;
38. Thence continuing southeasterly, forming an interior angle of 186 degrees 48 minutes 03 seconds with the last mentioned course, for 8.73 feet to an angle point;
39. Thence continuing southwesterly, forming an interior angle of 105 degrees 52 minutes 27 seconds with the last mentioned course, for 103.97 feet to an angle point;
40. Thence continuing southeasterly, forming an interior angle of 254 degrees 07 minutes 32 seconds with the last mentioned course, for 34.95 feet to an angle point;
41. Thence continuing southwesterly, forming an interior angle of 89 degrees 30 minutes 13 seconds with the last mentioned course, for 60.00 feet to an angle point;
42. Thence continuing northwesterly, forming an interior angle of 90 degrees 29 minutes 48 seconds with the last mentioned course, for 3.03 feet to an angle point;
43. Thence continuing southwesterly, forming an interior angle of 284 degrees 21 minutes 40 seconds with the last mentioned course, for 175.00 feet to an angle point;
44. Thence continuing southeasterly, forming an interior angle of 242 degrees 26 minutes 55 seconds with the last mentioned course, for 138.97 feet to an angle point;
45. Thence continuing southwesterly, forming an interior angle of 89 degrees 58 minutes 13 seconds with the last mentioned course, for 80.00 feet to an angle point;
46. Thence continuing northwesterly, forming an interior angle of 90 degrees 01 minutes 47 seconds with the last mentioned course, for 103.59 feet to an angle point;
47. Thence continuing southwesterly, forming an interior angle of 296 degrees 52 minutes 53 seconds with the last mentioned course, for 209.31 feet to an angle point;
48. Thence continuing southwesterly, forming an interior angle of 144 degrees 19 minutes 53 seconds with the last mentioned course, for 16.85 feet to an angle point;
49. Thence continuing southwesterly, forming an interior angle of 215 degrees 56 minutes 55 seconds with the last mentioned course, for 125.92 feet to point of tangency;
50. Thence continuing southwesterly, on the arc of a circle, curving to the left, the radius of which is

- 28.26 feet, for 32.14 feet to a point of compound curvature;
51. Thence continuing southeasterly, on the arc of a circle, curving to the left, the radius of which is 10.00 feet, for 8.49 feet to a point of curvature;
52. Thence continuing southeasterly, forming a tangent with the last mentioned course, for 83.10 feet to an angle point;
53. Thence continuing southwesterly, forming an interior angle of 51 degrees 24 minutes 37 seconds with the last mentioned course, for 5.11 feet to an angle point;
54. Thence continuing southeasterly, forming an interior angle of 305 degrees 37 minutes 49 seconds with the last mentioned course, for 259.82 feet to an angle point;
55. Thence continuing southeasterly, forming an interior angle of 183 degrees 00 minutes 22 seconds with the last mentioned course, for 53.86 feet to an angle point;
56. Thence continuing southeasterly, forming an interior angle of 183 degrees 38 minutes 54 seconds with the last mentioned course, for 10.64 feet to an angle point;
57. Thence continuing southeasterly, forming an interior angle of 181 degrees 01 minutes 09 seconds with the last mentioned course, for 1.58 feet to an angle point;
58. Thence continuing southeasterly, forming an interior angle of 184 degrees 36 minutes 17 seconds with the last mentioned course, for 26.65 feet to an angle point;
59. Thence continuing northwesterly, forming an interior angle of 301 degrees 46 minutes 36 seconds with the last mentioned course, for 19.02 feet to an angle point;
60. Thence continuing northeasterly, forming an interior angle of 68 degrees 39 minutes 01 seconds with the last mentioned course, for 85.89 feet to an angle point;
61. Thence continuing southeasterly, forming an interior angle of 111 degrees 20 minutes 59 seconds with the last mentioned course, for 22.09 feet to an angle point;
62. Thence continuing northeasterly, forming an interior angle of 265 degrees 59 minutes 29 seconds with the last mentioned course, for 20.13 feet to an angle point;
63. Thence continuing southeasterly, forming an interior angle of 77 degrees 44 minutes 11 seconds with the last mentioned course, for 60.30 feet to an angle point;
64. Thence continuing southwesterly, forming an interior angle of 98 degrees 57 minutes 36 seconds with the last mentioned course, for 3.21 feet to an angle point;
65. Thence continuing southeasterly, forming an interior angle of 278 degrees 45 minutes 35 seconds with the last mentioned course, for 6.28 feet to an angle point;
66. Thence continuing southwesterly, forming an interior angle of 74 degrees 36 minutes 26 seconds with the last mentioned course, for 82.98 feet to an angle point;
67. Thence continuing northwesterly, forming an interior angle of 105 degrees 23 minutes 34 seconds with the last mentioned course, for 12.20 feet to an angle point;
68. Thence continuing northwesterly, forming an interior angle of 240 degrees 02 minutes 18 seconds with the last mentioned course, for 12.94 feet to an angle point;
69. Thence continuing northwesterly, forming an interior angle of 177 degrees 45 minutes 41 seconds with the last mentioned course, for 53.71 feet to an angle point;
70. Thence continuing northwesterly, forming an interior angle of 172 degrees 29 minutes 48 seconds with the last mentioned course, for 44.12 feet to an angle point;
71. Thence continuing northwesterly, forming an interior angle of 179 degrees 27 minutes 03 seconds with the last mentioned course, for 26.65 feet to an angle point;
72. Thence continuing northwesterly, forming an interior angle of 173 degrees 00 minutes 50 seconds with the last mentioned course, for 154.70 feet to an angle point;
73. Thence continuing northwesterly, forming an interior angle of 182 degrees 09 minutes 28 seconds with the last mentioned course, for 46.88 feet to an angle point;
74. Thence continuing northwesterly, forming an interior angle of 181 degrees 12 minutes 48 seconds with the last mentioned course, for 53.34 feet to a point of tangency;
75. Thence continuing northwesterly, on the arc of a circle, curving to the left, the radius of which is 300.00 feet, for 188.85 feet to a point of curvature;
76. Thence continuing southeasterly, forming an interior angle of 282 degrees 17 minutes 01 seconds with the tangent of the last mentioned course, for 6.77 feet to an angle point;
77. Thence continuing southwesterly, forming an interior angle of 86 degrees 08 minutes 28 seconds with the last mentioned course, for 60.14 feet to an angle point;
78. Thence continuing northwesterly, forming an interior angle of 93 degrees 51 minutes 32 seconds with the last mentioned course, for 10.03 feet to an angle point;
79. Thence continuing southwesterly, forming an interior angle of 266 degrees 01 minutes 50 seconds with the last mentioned course, for 200.48 feet to an angle point;
80. Thence continuing southeasterly, forming an interior angle of 273 degrees 58 minutes 10 seconds

- with the last mentioned course, for 9.72 feet to an angle point;
81. Thence continuing southwesterly, forming an interior angle of 82 degrees 04 minutes 38 seconds with the last mentioned course, for 60.58 feet to an angle point;
82. Thence continuing northwesterly, forming an interior angle of 97 degrees 55 minutes 24 seconds with the last mentioned course, for 5.53 feet to an angle point;
83. Thence continuing southwesterly, forming an interior angle of 266 degrees 01 minutes 50 seconds with the last mentioned course, for 38.99 feet to an angle point;
84. Thence continuing southwesterly, forming an interior angle of 175 degrees 51 minutes 53 seconds with the last mentioned course, for 75.16 feet to an angle point;
85. Thence continuing northwesterly, forming an interior angle of 97 degrees 44 minutes 50 seconds with the last mentioned course, for 9.58 feet to an angle point;
86. Thence continuing southwesterly, forming an interior angle of 262 degrees 11 minutes 42 seconds with the last mentioned course, for 112.22 feet to an angle point;
87. Thence continuing northwesterly, forming an interior angle of 90 degrees 31 minutes 13 seconds with the last mentioned course, for 5.00 feet to an angle point;
88. Thence continuing southwesterly, forming an interior angle of 269 degrees 28 minutes 47 seconds with the last mentioned course, for 82.92 feet to an angle point;
89. Thence continuing northwesterly, forming an interior angle of 90 degrees 00 minutes 00 seconds with the last mentioned course, for 49.44 feet to the point of beginning.

This parcel comprised an area of 164,829.0 square feet or 3.784 acres.

Surveys, maps or plans of the property to be acquired are on file in the office of the Corporation Counsel of the City of New York, 100 Church Street, New York, New York 10007.

PLEASE TAKE FURTHER NOTICE THAT, pursuant to EDPL § 402(B)(4), any party seeking to oppose the acquisition must interpose a verified answer, which must contain specific denial of each material allegation of the petition controverted by the opponent, or any statement of new matter deemed by the opponent to be a defense to the proceeding. Pursuant to CPLR 403, said answer must be served upon the office of the Corporation Counsel at least seven (7) days before the date that the petition is noticed to be heard.

Dated: January 11, 2011, New York, New York
 MICHAEL A. CARDOZO
 Corporation Counsel of the City of New York
 100 Church Street, Rm 5-241
 New York, New York 10007
 Tel. (212) 788-0705

SEE MAPS ON BACK PAGES

j28-f10

PROPERTY DISPOSITION

CITYWIDE ADMINISTRATIVE SERVICES

MUNICIPAL SUPPLY SERVICES

■ AUCTION

PUBLIC AUCTION SALE NUMBER 11001-L

NOTICE IS HEREBY GIVEN of a public auction of City fleet vehicles consisting of cars, vans, light duty vehicles, trucks, heavy equipment and miscellaneous automotive equipment to be held on Wednesday, February 2, 2011 (SALE NUMBER 11001-L). Viewing is on auction day only from 8:30 A.M. until 9:00 A.M. The auction begins at 9:00 A.M.

LOCATION: 570 Kent Avenue, Brooklyn, NY (in the Brooklyn Navy Yard between Taylor and Clymer Streets).

A listing of vehicles to be offered for sale in the next auction can be viewed on our website, on the Friday prior to the sale date at:

<http://www.nyc.gov/autoauction>
 or
<http://www.nyc.gov/autoauctions>

Terms and Conditions of Sale can also be viewed at this site. For further information, please call (718) 417-2155 or (718) 625-1313.

j12-f2

POLICE

OWNERS ARE WANTED BY THE PROPERTY CLERK DIVISION OF THE NEW YORK CITY POLICE DEPARTMENT.

The following listed property is in the custody, of the Property Clerk Division without claimants.

Recovered, lost, abandoned property, property obtained from prisoners, emotionally disturbed, intoxicated and deceased persons; and property obtained from persons incapable of caring for themselves. Motor vehicles, boats, bicycles, business machines, cameras, calculating machines, electrical and optical property, furniture, furs, handbags, hardware, jewelry, photographic equipment, radios, robes, sound systems, surgical and musical instruments, tools, wearing apparel, communications equipment, computers, and other miscellaneous articles.

INQUIRIES
Inquiries relating to such property should be made in the Borough concerned, at the following office of the Property Clerk.

FOR MOTOR VEHICLES
(All Boroughs):

- * College Auto Pound, 129-01 31 Avenue, College Point, NY 11354, (718) 445-0100
- * Gowanus Auto Pound, 29th Street and 2nd Avenue, Brooklyn, NY 11212, (718) 832-3852
- * Erie Basin Auto Pound, 700 Columbia Street, Brooklyn, NY 11231, (718) 246-2029

FOR ALL OTHER PROPERTY

- * Manhattan - 1 Police Plaza, New York, NY 10038, (212) 374-4925.
- * Brooklyn - 84th Precinct, 301 Gold Street, Brooklyn, NY 11201, (718) 875-6675.
- * Bronx Property Clerk - 215 East 161 Street, Bronx, NY 10451, (718) 590-2806.
- * Queens Property Clerk - 47-07 Pearson Place, Long Island City, NY 11101, (718) 433-2678.
- * Staten Island Property Clerk - 1 Edgewater Plaza, Staten Island, NY 10301, (718) 876-8484.

j1-d31



"The City of New York is committed to achieving excellence in the design and construction of its capital program, and building on the tradition of innovation in architecture and engineering that has contributed to the City's prestige as a global destination. The contracting opportunities for construction/construction services and construction-related services that appear in the individual agency listings below reflect that commitment to excellence."

ADMINISTRATION FOR CHILDREN'S SERVICES

■ AWARDS

Human / Client Services

MEDICAL SERVICES - HEALTH SERVICE PROGRAM – Renewal – PIN# 13008P001CNCR001 – AMT: \$11,141,835.00 – TO: The Floating Hospital, Inc., 41-40 27th Street, Long Island City, NY 11101. For Youth in secure and non-secure detention centers.

☛ j31

CITYWIDE ADMINISTRATIVE SERVICES

MUNICIPAL SUPPLY SERVICES

■ SOLICITATIONS

Goods

PLUMBING SUPPLIES: CLAMPS, PIPE REPAIR, RE-AD – Competitive Sealed Bids – PIN# 8571100499 – DUE 02-16-11 AT 10:30 A.M.
● **PAINT, ENAMEL, FUME PROOF, WHITE (RE-AD)** – Competitive Sealed Bids – PIN# 8571100272 – DUE 02-16-11 AT 10:30 A.M.

Use the following address unless otherwise specified in notice, to secure, examine or submit bid/proposal documents, vendor pre-qualification and other forms; specifications/blueprints; other information; and for opening and reading of bids at date and time specified above.
Department of Citywide Administrative Services
1 Centre Street, Room 1800, New York, NY 10007.
Anna Wong (212) 669-8610, fax: (212) 669-7603,
dcaadmssbids@dca.nyc.gov

☛ j31

■ AWARDS

Goods

NYS CONTR FOR MCAFEE SOFTWARE/HARDWARE - ACS – Intergovernmental Purchase – PIN# 8571100488 – AMT: \$148,000.00 – TO: Nexus Consortium, Inc., 1933 Highway 35, Suite #356, Wall, NJ 07719. NYS Contracts #PT59096, PS59097.

Suppliers wishing to be considered for a contract with the Office of General Services of New York State are advised to contact the Procurement Services Group, Corning Tower, Room 3711, Empire State Plaza, Albany, NY 12242 or by phone: 518-474-6717.

☛ j31

■ VENDOR LISTS

Goods

ACCEPTABLE BRAND LIST – In accordance with PPB Rules, Section 2-05(c)(3), the following is a list of all food items for which an Acceptable Brands List has been established.

1. Mix, Biscuit - AB-14-1:92
2. Mix, Bran Muffin - AB-14-2:91
3. Mix, Corn Muffin - AB-14-5:91
4. Mix, Pie Crust - AB-14-9:91
5. Mixes, Cake - AB-14-11:92A
6. Mix, Egg Nog - AB-14-19:93
7. Canned Beef Stew - AB-14-25:97

8. Canned Ham Shanks - AB-14-28:91
9. Canned Corned Beef Hash - AB-14-26:94
10. Canned Boned Chicken - AB-14-27:91
11. Canned Corned Beef - AB-14-30:91
12. Canned Ham, Cured - AB-14-29:91
13. Complete Horse Feed Pellets - AB-15-1:92
14. Canned Soups - AB-14-10:92D
15. Infant Formula, Ready to Feed - AB-16-1:93
16. Spices - AB-14-12:95
17. Soy Sauce - AB-14-03:94
18. Worcestershire Sauce - AB-14-04:94

Application for inclusion on the above enumerated Acceptable Brand Lists for foods shall be made in writing and addressed to: Purchase Director, Food Unit, Department of Citywide Administrative Services, Division of Municipal Supply Services, 1 Centre Street, 18th Floor, New York, NY 10007, (212) 669-4207.

j5-d31

EQUIPMENT FOR DEPARTMENT OF SANITATION

In accordance with PPB Rules, Section 2.05(c)(3), an acceptable brands list will be established for the following equipment for the Department of Sanitation:

- A. Collection Truck Bodies
- B. Collection Truck Cab Chassis
- C. Major Component Parts (Engine, Transmission, etc.)

Applications for consideration of equipment products for inclusion on the acceptable brands list are available from: Vendor Relations, Department of Citywide Administrative Services, Division of Municipal Supply Services, 1 Centre Street, 18th Floor, New York, NY 10007. (212) 669-8610.

j5-d31

OPEN SPACE FURNITURE SYSTEMS - CITYWIDE – In accordance with PPB Rules, Section 2.05(c)(3), an Acceptable Brands List, #AB-17W-1:99, has been established for open space furniture systems.

Application for consideration of product for inclusion on this acceptable brands list shall be made in writing and addressed to: Vendor Relations, Department of Citywide Administrative Services, Division of Municipal Supply Services, 1 Centre Street, 18th Floor, New York, NY 10007, (212) 669-8610.

j5-d31

■ INTENT TO AWARD

Services (Other Than Human Services)

UNARMED SECURITY GUARDS – Negotiated Acquisition – PIN# 85700700567 – DUE 02-04-11 AT 10:30 A.M. – DCAS/DMSS intends to negotiate with the current provider of Unarmed Security Guard Services, AlliedBarton Security Services, LLC, to extend the existing contract. It is anticipated that the contract term will be from March 10, 2011, through March 9, 2013. Organizations interested in responding to future solicitations for this service are invited to do so by calling the DCAS/DMSS Office of Vendor Relations at (212) 669-8562 to request a Vendor Package.

Available only from current provider.

Use the following address unless otherwise specified in notice, to secure, examine or submit bid/proposal documents, vendor pre-qualification and other forms; specifications/blueprints; other information; and for opening and reading of bids at date and time specified above.

Department of Citywide Administrative Services
1 Centre Street, 18th Floor South, New York, NY 10007.
Carol Green (212) 669-8530.

j28-f3

ECONOMIC DEVELOPMENT CORPORATION

■ SOLICITATIONS

Goods & Services

ELECTRICAL GENERATOR MAINTENANCE SERVICES FOR VARIOUS SITES RFP – Request for Proposals – PIN# 13510098 – DUE 02-22-11 AT 4:00 P.M. – Apple Industrial Development Corp. (“Apple”) is seeking proposals from experienced electrical generator companies to provide maintenance services for the Brooklyn Army Terminal, Pier 11, and the Audubon Ballroom.

Apple plans to select the electrical generator company on the basis of factors stated in the RFP which include, but are not limited to: respondent experience and reputation, commitment of personnel, quality of proposal, favorable history, and price.

There will be an optional information session and site visit on Wednesday, February 9, 2011 at 10:00 A.M. Respondents may submit questions and/or request clarifications from Apple no later than 5:00 P.M. on Friday, February 11, 2011. Questions regarding the subject matter of this RFP should be directed to applegenerator@nycedc.com. Answers to questions and clarifications will be posted on Wednesday, February 16, 2011, to www.nycedc.com/RFP.

To download a copy of the solicitation documents please visit www.nycedc.com/RFP. Companies who have been certified with the New York City Department of Small Business Services as Minority and Women Owned Business Enterprises (“M/WBE”) are strongly encouraged to apply. To learn more about M/WBE certification and NYCEDC’s M/WBE program, please visit www.nycedc.com/RFP.

Please submit two (2) sets of your proposal to NYCEDC.

Use the following address unless otherwise specified in notice, to secure, examine or submit bid/proposal documents, vendor pre-qualification and other forms; specifications/blueprints; other information; and for opening and reading of bids at date and time specified above.
Economic Development Corp., 110 William Street, 6th Floor, New York, NY 10038. Maryann Catalano (212) 312-3969, fax: (212) 312-3918, applegenerator@nycedc.com

☛ j31

FULL SERVICE HEATING MAINTENANCE, REPAIR AND EMERGENCY SERVICES FOR VARIOUS SITES RFP – Request for Proposals – PIN# 13510097 – DUE 02-18-11 AT 4:00 P.M. – Apple Industrial Development Corp. (“Apple”) is seeking proposals from experienced heating companies to provide heating maintenance, repairs, and emergency services for the Brooklyn Wholesale Meat Market, Bush Terminal, the Seaport Block House below FDR Drive, 159 John Street, 133 Beekman Street, 1680 Lexington Avenue, and for the various sites.

Apple plans to select the heating company on the basis of factors stated in the RFP which include, but are not limited to: respondent experience and reputation, commitment of personnel, quality of proposal, favorable history, and price.

There will be an optional information session and site visit on Tuesday, February 8, 2011 at 10:00 A.M. Respondents may submit questions and/or request clarifications from Apple no later than 5:00 P.M. on Thursday, February 10, 2011. Questions regarding the subject matter of this RFP should be directed to appleheating2@nycedc.com. Answers to questions and clarifications will be posted on Tuesday, February 15, 2011, to www.nycedc.com/RFP.

To download a copy of the solicitation documents please visit www.nycedc.com/RFP.

Companies who have been certified with the New York City Department of Small Business Services as Minority and Women Owned Business Enterprises (“M/WBE”) are strongly encouraged to apply. To learn more about M/WBE certification and NYCEDC’s M/WBE program, please visit www.nycedc.com/RFP.

Please submit two (2) sets of your proposal to NYCEDC.

Use the following address unless otherwise specified in notice, to secure, examine or submit bid/proposal documents, vendor pre-qualification and other forms; specifications/blueprints; other information; and for opening and reading of bids at date and time specified above.

Economic Development Corp., 110 William Street, 6th Floor, New York, NY 10038. Maryann Catalano (212) 312-3969, fax: (212) 312-3918, appleheating2@nycedc.com

☛ j31

ENVIRONMENTAL PROTECTION

WATER SUPPLY

■ SOLICITATIONS

Human / Client Services

GAS TURBINE HELICOPTER AND PILOT SERVICES AT THE NYC WATERSHED, UPSTATE, NEW YORK – Competitive Sealed Bids – PIN# 82612BPS1201 – DUE 02-23-11 AT 11:30 A.M. – CONTRACT BPS-1201: Document Fee: \$80.00. Frank Milazzo, Project Manager, (845) 340-7275.

Use the following address unless otherwise specified in notice, to secure, examine or submit bid/proposal documents, vendor pre-qualification and other forms; specifications/blueprints; other information; and for opening and reading of bids at date and time specified above.

Department of Environmental Protection,
59-17 Junction Boulevard, 17th Floor, Flushing, New York 11373. G. Hall (718) 595-3236, g.hall@dep.nyc.gov

☛ j31

WASTEWATER TREATMENT

■ SOLICITATIONS

Services (Other Than Human Services)

SERVICE AND REPAIR OF FIRE ALARM SYSTEMS AT VARIOUS WWTP'S AND ASSOCIATED FACILITIES, CITYWIDE – Competitive Sealed Bids – PIN# 826111285FAS – DUE 02-22-11 AT 11:30 A.M. – Contract 1285-FAS: Document Fee \$80.00. There will be a pre-bid conference on 2/15/11 at 10:00 A.M. at 96-05 Horace Harding Expressway, 2nd Floor Conference Room #1, Flushing, NY 11373. Mike Saghati, Project Manager, (718) 595-4865. Please be advised that this contract is subject to the Project Labor Agreement.

Use the following address unless otherwise specified in notice, to secure, examine or submit bid/proposal documents, vendor pre-qualification and other forms; specifications/blueprints; other information; and for opening and reading of bids at date and time specified above.

Department of Environmental Protection,
59-17 Junction Boulevard, Elmhurst, New York 11373.
Greg Hall (718) 595-3236, gregh@dep.nyc.gov

☛ j31

HEALTH AND HOSPITALS CORPORATION

The New York City Health and Hospitals Corporation is regularly soliciting bids for supplies and equipment at its Central Purchasing Offices, 346 Broadway, New York City, Room 516, for its Hospitals and Diagnostic and Treatment Centers. All interested parties are welcome to review the bids that are posted in Room 516 weekdays between 9:00 a.m. and 4:30 p.m. For information regarding bids and the bidding process, please call (212) 442-4018.

j1-d31

HEALTH AND MENTAL HYGIENE

AGENCY CHIEF CONTRACTING OFFICER

■ SOLICITATIONS

Human / Client Services

NEW YORK/NY III SUPPORTED HOUSING CONGREGATE – Competitive Sealed Proposals – Judgment required in evaluating proposals -

PIN# 81608PO076300R0X00-R – DUE 03-22-12 AT 4:00 P.M. – The Department is issuing a RFP to establish 3,000 units of citywide supportive housing in newly constructed or rehabilitated single-site buildings for various homeless populations pursuant to the New York III Supported Housing agreement. The subject RFP will be open-ended and proposals will be accepted on an on-going basis. The RFP is available on-line at <http://www.nyc.gov/html/doh/html/acco/acco-rfp-nynycongregate-20070117-form.shtml>. A pre-proposal conference was held on March 6, 2007 at 2:00 P.M. at 125 Worth Street, 2nd Floor Auditorium, New York, N.Y. Any questions regarding this RFP must be sent in writing in advance to Contracting Officer at the above address or fax to (212) 219-5865. All proposals must be hand delivered at the Agency Chief Contracting Officer, 93 Worth Street, Room 812, New York, NY 10013, no later than March 22, 2012.

As a minimum qualification requirement for (1) the serious and persistent mentally ill populations, the proposer must be incorporated as a not-for-profit organization, and (2) for the young adult populations, the proposer must document site control and identify the source of the capital funding and being used to construct or renovate the building.

Use the following address unless otherwise specified in notice, to secure, examine or submit bid/proposal documents, vendor pre-qualification and other forms; specifications/blueprints; other information; and for opening and reading of bids at date and time specified above.
Health and Mental Hygiene, 93 Worth Street, Room 812 New York, NY 10013. Huguette Beauport (212) 219-5883 fax: (212) 219-5890, hbeaupor@health.nyc.gov

o1-m21

AWARDS

Services (Other Than Human Services)

LANGUAGE SERVICES – Renewal – PIN# 06HE014701R1X00 – AMT: \$250,000.00 – TO: Eriksen Translations, Inc., 32 Court Street, 20th Floor, Brooklyn, NY 11201.

j31

HOMELESS SERVICES

OFFICE OF CONTRACTS AND PROCUREMENT

SOLICITATIONS

Human/Client Services

CORRECTION; TRANSITIONAL RESIDENCES FOR HOMELESS/ DROP-IN CENTERS – Competitive Sealed Proposals – Judgment required in evaluating proposals - PIN# 071-00S-003-262Z – DUE 06-27-11 AT 10:00 A.M. – CORRECTION: The Department of Homeless Services is soliciting proposals from organizations interested in developing and operating transitional residences for homeless adults and families including the Neighborhood Based Cluster Residence and drop-in centers for adults. This is an open-ended solicitation; there is no due date for submission.

Use the following address unless otherwise specified in notice, to secure, examine or submit bid/proposal documents, vendor pre-qualification and other forms; specifications/blueprints; other information; and for opening and reading of bids at date and time specified above.
Department of Homeless Services, 33 Beaver Street 13th Floor, New York, NY 10004. Marta Zmoira (212) 361-0888, mzmzmoira@dhs.nyc.gov

j6-20

HUMAN RESOURCES ADMINISTRATION

INTENT TO AWARD

Human/Client Services

HOME ATTENDANT SERVICES – Negotiated Acquisition/Pre-Qualified List – PIN# 06911H077800 – DUE 02-07-11 AT 5:00 P.M. – For Information Purpose Only

1. Association For Services For the Aged located at 36-36 33rd Street, Long Island City, NY 11106. Contract amount: \$0. City Share - \$15,861,505 (Medicaid Management Information System (MMIS)). PIN: 06911H077801.

2. Barele, Inc. D/B/A Omega Home Health Services, 44 Court Street, Suite 700, Brooklyn, NY 11201. Contract amount: \$0. City Share - \$9,755,167 (MMIS). PIN: 06911H077802.

3. Best Care, Inc. D/B/A All City Care, 300 Hempstead Turnpike, Levittown, NY 11756. Contract amount: \$0. City Share - \$8,204,583 (MMIS). PIN: 06911H077803.

4. Beth Emeth Home Attendant Services, INC., 1080 McDonald Avenue, Brooklyn, NY 11230. Contract amount: \$0. City Share - \$14,340,111 (MMIS). PIN: 06911H077804.

5. Bhrags Home Care, Inc., 444 Thomas Boyland Avenue, Brooklyn, NY 11212. Contract amount: \$0. City Share - \$12,829,133 (MMIS). PIN: 06911H077805.

6. Bushwick Stuyvesant Heights Home Attendant, Inc., 1004 Gates Avenue, Brooklyn, NY 11221. Contract amount: \$0. City share - \$8,959,980 (MMIS). PIN: 06911H077806.

7. Cabs Home Attendant Services, 545 Broadway, Brooklyn, NY 11206 (2 contracts). Contract amounts: \$0. City Share - \$18,965,135 (MMIS). PIN: 06911H077807 and \$8,045,419 (MMIS). PIN: 06911H077808.

8. Chinese American Planning Council Home Attendant Program, 1 York Street, 2nd Floor, New York, NY 10013

(2 contracts). Contract amount: \$0. City Share - \$8,807,294 (MMIS) PIN:06911H077809 and \$22,167,645 (MMIS) PIN: 06911H077830.

9. Community Home Care Referral D/B/A Helping Hands Attendant Services, 3920 13TH Avenue, Bklyn., NY 11218. Contract amount: \$0. City Share - \$13,328,688 (MMIS). PIN: 06911H077810.

10. C.I.D.N.Y. Independent Living Services, Inc., 841 Broadway, New York, NY 10003. Contract amount: \$0. City Share - \$8,134,462 (MMIS). PIN: 06911H077829.

11. Council For Human Service Home Care Services, 2253 Third Avenue, 4th floor, New York, NY 10035. Contract amount: \$0. City Share - \$8,668,187. PIN: 06911H077831.

12. F.E.G.S. Home Attendant Services, Inc., 240 East 123rd Street, New York, NY 10035. Contract amount: \$0. City Share - \$14,001,648 (MMIS). PIN: 06911H077832.

13. Family Home Care Services of Brooklyn and Queens, Inc., 168 Seventh Street Ground Floor, Brooklyn NY 11215 (2 contracts). Contract amounts: \$0. City Share - \$23,607,581 (MMIS); PIN: 06911H077811 and 241 37th Street, Brooklyn NY 11232 - \$7,784,715 (MMIS); PIN: 06911H077840.

14. First Chinese Presbyterian Community Affairs Home Attendant Corp., 121 Avenue of the Americas, Suite 504, New York, NY 10013. Contract amount: \$0. City Share - \$23,266,623 (MMIS); PIN: 06911H077833.

15. Home Attendant Services of Hyde Park, 1273 53rd Street, Bklyn., NY 11219. Contract amount: \$0. City Share - \$15,865,949 (MMIS); PIN: 06911H077813.

16. Home Attendant Vendor Agency, 3036B Nostrand Avenue, Bklyn., 11229. Contract amount: \$0. City Share - \$19,331,526 (MMIS); PIN: 06911H077814.

17. Home Care Services for Independent Living, 2044 Ocean Avenue, Bklyn., NY 11230. Contract amount: \$0. City Share - \$21,123,449 (MMIS); PIN: 06911H077815.

18. Home Health Management Services, 30 Broad Street, 12th Floor, New York, NY 10004. Contract amount: \$0. City Share - \$21,302,817 (MMIS). PIN: 06911H077834.

19. Home Services Sysetms, Inc., 32-75 Steinway Street, Astoria, NY 11103 (2 contracts). Contract amounts: \$0. City Share - \$11,721,615 (MMIS); PIN: 06911H077812 and \$23,225,809 (MMIS); PIN: 06911H077841.

20. Human Development Association, Inc., 12 Heyward Street, Bklyn., NY 11211. Contract amount: \$0. City Share - \$21,646,442 (MMIS); PIN: 06911H077816.

21. Jewish Community Council Services Commission, Inc., 80 Maiden Lane, 10th floor, Kew Gardens, NY 11415. Contract amount: \$0. City Share - \$13,552,367 (MMIS); PIN: 06911H077842.

22. Mobilization for Youth Health Services, Inc., 199 Avenue B, New York, NY 10009. Contract amount: \$0. City Share - \$7,901,053 (MMIS); PIN: 06911H077835.

23. New York Foundation for Citizens Home Attendant Services, Inc., 11 Park Place, Suite 1416, New York, NY 10007. Contract amount: \$0. City Share - \$14,223,489 (MMIS); PIN: 06911H077836.

24. North General Home Attendant Corp., 205 East 122nd Street, New York, NY 10035. Contract amount: \$0. City Share - \$9,264,036 (MMIS); PIN: 06911H077837.

25. People Care, Inc., 116 West 32nd Street, 15th Floor, New York, NY 10001 (3 contracts). Contract amount: \$0. City Share - \$6,101,914 (MMIS); PIN: 06911H077838; \$3,546,380 (MMIS) PIN: 06911H077843; \$6,716,780 (MMIS) PIN: 06911H077819.

26. Personal Touch Home Care, Inc., 186-18 Hillside Avenue, Jamaica, NY 11432. Contract amount: \$0. City Share - \$12,603,675 (MMIS); PIN: 06911H077820.

27. Pomonok Home Services, Inc., 61-17 190th Street, Fresh Meadows, NY 11365. Contract amount: \$0. City Share - \$15,122,725 (MMIS); PIN: 06911H077844.

28. Premier Home Health Care Services, Inc. D/B/A First Aide Home Care, 360 Hamilton Avenue, White Plains, NY 10601. Contract amount: \$0. City Share - \$7,544,700 (MMIS) PIN: 06911H077821.

29. Prestige Home Attendant, Inc., D/B/A All Season Home Attendant, 377 Broadway, 2nd Floor, New York, NY 10013 (2 contracts). Contract amounts: \$0. City Share - \$10,414,984 (MMIS); PIN: 06911H077822 and \$9,612,657 (MMIS), PIN: 06911H077845.

30. Progressive Home Health Services, 132 West 31 Street, 7th Floor, New York, NY 10001. Contract amount: \$0. City Share - \$10,842,774 (MMIS); PIN: 06911H077817.

31. Project O.H.R., Inc. (Office of Home Care Referral), 80 Maiden Lane, 10th Floor, New York, NY 10038. Contract amount: \$0. City Share - \$28,228,011 (MMIS); PIN: 06911H077823.

32. Ridgewood Bushwick Senior Citizens Council, 533 Bushwick Avenue, Bklyn., NY 11206 (2 contracts) Contract amounts: \$0. City Share - \$15,683,312 (MMIS); PIN: 06911H077824 and \$8,158,889 (MMIS); PIN: 06911H077846.

33. Rockaway Home Attendant Services, Inc., 1603 Central Avenue, Far Rockaway, NY 11691. Contract amount: \$0. City Share - \$10,485,744 (MMIS), PIN: 06911H077847.

34. Services for the Aged, 36-36 33rd Street, Long Island City, NY 11106. Contract amount: \$0. City Share - \$7,093,329 (MMIS), PIN: 06911H077848.

35. St. Nicholas Human Support Corp., 2 Kingsland Avenue, Bklyn., NY 11211. Contract amount: \$0. City Share - \$15,471,405 (MMIS), PIN: 06911H077826.

36. Stella Orton Home Care Agency, 3155 Amboy Road, Staten Island, NY 10306. Contract amount: \$0. City Share - \$20,418,734 (MMIS), PIN: 06911H077852.

37. Sunnywide Home Care Agency, 4331 39th Street, Sunnyside, NY 11104. Contract amount: \$0. City Share - \$16,005,117 (MMIS), PIN: 06911H077850.

38. United Jewish Council of the East Side Home Attendant Services, 500A Grand Street, New York, NY 10002. Contract amount: \$0. City Share - \$19,463,011 (MMIS), PIN: 06911H077839.

39. VIP Health Care Services, Inc., 116-12 Myrtle Avenue, Richmond Hill, NY 11418 (2 contracts). Contract amounts: \$0. City Share - \$6,629,671 (MMIS), PIN: 06911H077828 and \$4,627,051 (MMIS), PIN: 06911H077851.

40. P.S.C. Community Services, Inc., 120 Jewel Street, Bklyn., NY 11222. Contract amount: \$0. City Share - \$14,310,308 (MMIS). PIN: 06911H077818.

41. Services for the Underserved Home Attendant Program, Inc., 305 Seventh Avenue, 10th Floor, New York, NY 10001. Contract amount: \$0. City Share - \$10,296,654 (MMIS), PIN: 06911H077827.

42. Social Concern Community Development Corp., 226-18 Merick Boulevard, Laurelton, NY 11413. Contract amount: \$0. City Share - \$9,932,244 (MMIS), PIN: 06911H077849.

43. School Settlement Home Attendant Service Corp., 357 Manhattan Avenue, Brooklyn, NY 11211. Contract amount: \$0. City Share - \$15,162,788 (MMIS), PIN: 06911H077825.

The Human Resources Administration (HRA/Home Care Services Program (HCSP)) plans to enter into negotiations with the organizations that currently provide Home Attendant Services to Medicaid-Eligible Individuals in the boroughs of Manhattan, Queens, Brooklyn, and Staten Island to allow these contractors to continue to provide these critical services until new contracts are in place. It is anticipated that the contract term will be from 1/1/2011 to 6/30/2011.

Organizations interested in responding to a future solicitation for these services are invited to do so by filling with the new York City Vendor Enrollment application, on line www.nyc.gov/selltonyc.

Use the following address unless otherwise specified in notice, to secure, examine or submit bid/proposal documents, vendor pre-qualification and other forms; specifications/blueprints; other information; and for opening and reading of bids at date and time specified above.
Human Resources Administration, 80 Water Street, New York, NY 10038. Sharon Webley (212) 331-3448, webleys@hra.nyc.gov

j27-f2

CONTRACTS

INTENT TO AWARD

Services (Other Than Human Services)

SECURITY GUARD SERVICES – Negotiated Acquisition – Available only from a single source - PIN# 069-11-110-0030 – DUE 02-11-11 AT 3:00 P.M. – The contract term for the vendor listed below: May 1, 2011 to April 30, 2012.

FJC Security Services, Inc.
 275 Jericho Turnpike
 Floral Park, NY 11001
 EPIN: 06906B0007CNVN002

This notice is for informational purposes only

Any vendor who believes they can also provide services for such procurement in the future is invited to call the NYC Vendor Enrollment Center at (212) 857-1680 to request an application or may complete the application on-line by visiting www.nyc.gov/selltonyc. If you have any questions, you may also contact Ms. Donna Wilson in writing at the above address.

Use the following address unless otherwise specified in notice, to secure, examine or submit bid/proposal documents, vendor pre-qualification and other forms; specifications/blueprints; other information; and for opening and reading of bids at date and time specified above.
Human Resources Administration, 180 Water Street, 14th Floor, New York, NY 10038. Donna Wilson (212) 331-4843, fax: (212) 331-3457, wilsond@hra.nyc.gov

j28-f3

INFORMATION TECHNOLOGY AND TELECOMMUNICATIONS

AGENCY CHIEF CONTRACTING OFFICER

AWARDS

Goods & Services

MCAFFEE LICENSES AND INSTALLATION SERVICES

– Intergovernmental Purchase – PIN# 85811G0004001 – AMT: \$21,615,280.00 – TO: DynTek Services, Inc., 1250 Broadway, Suite 3801, NYC, NY 10001. Bundled purchase of McAfee software, McAfee hardware, 5-year extended gold level warranties, and McAfee authorized professional services. This award was procured through the Federal GSA IT Schedule 70 Multiple Award Schedule. Therefore, the agency must follow the Federal GSA IT Schedule 70 procurement policy.

j31

JUVENILE JUSTICE

■ SOLICITATIONS

Human/Client Services

PROVISION OF NON-SECURE DETENTION GROUP HOMES – Negotiated Acquisition – Judgment required in evaluating proposals - PIN# 13010DJJ000 – DUE 06-30-11 AT 5:00 P.M. – ACS Division of Youth and Family Justice is soliciting applications from organizations interested in operating non-secure detention group homes in New York City. This is an open-ended solicitation; applications will be accepted on a rolling basis until 5:00 P.M. on 6/30/11.

Use the following address unless otherwise specified in notice, to secure, examine or submit bid/proposal documents, vendor pre-qualification and other forms; specifications/ blueprints; other information; and for opening and reading of bids at date and time specified above.

Department of Juvenile Justice, 150 William Street, 9th Floor, New York, NY 10038. Patricia Chabla (212) 341-3505, fax: (212) 341-3625, patricia.chabla@dfa.state.ny.us

d15-j29

PARKS AND RECREATION

PURCHASING AND ACCOUNTING

■ SOLICITATIONS

Goods & Services

BRONX AND BROOKLYN VEHICLE AND EQUIPMENT FLEETS – Competitive Sealed Bids – PIN# 84611B0068 – DUE 03-04-11 AT 3:00 P.M.

Use the following address unless otherwise specified in notice, to secure, examine or submit bid/proposal documents, vendor pre-qualification and other forms; specifications/ blueprints; other information; and for opening and reading of bids at date and time specified above.

Parks and Recreation, 24 West 61st Street, New York, NY 10023. Harold Wilson (212) 830-7964, fax: (917) 849-6455, harold.wilson@parks.nyc.gov

■ j31

Services (Other Than Human Services)

TREE TRIMMING, REMOVAL, DEBRIS DISPOSAL OF STREET AND PARKLAND TREES, QUEENS – Competitive Sealed Bids – PIN# 84611B0080 – DUE 02-21-11 AT 11:00 A.M.

● **TREE TRIMMING, REMOVAL, DEBRIS DISPOSAL OF STREET AND PARKLAND, CITYWIDE** – Competitive Sealed Bids – PIN# 84611B0079 – DUE 02-21-11 AT 11:00 A.M.

Use the following address unless otherwise specified in notice, to secure, examine or submit bid/proposal documents, vendor pre-qualification and other forms; specifications/ blueprints; other information; and for opening and reading of bids at date and time specified above.

Parks and Recreation, 24 West 61st Street, New York, NY 10023. Winsome Miles (212) 830-7974, fax: (917) 849-6454, winsome.miles@parks.nyc.gov

■ j31

REVENUE AND CONCESSIONS

■ SOLICITATIONS

Services (Other Than Human Services)

RENOVATION, OPERATION AND MAINTENANCE OF A CAFE – Competitive Sealed Proposals – Judgment required in evaluating proposals - PIN# M124-SB – DUE 03-04-11 AT 3:00 P.M. – At First Park in Manhattan. There will be a recommended site visit on Wednesday, February 9, 2011 at 3:00 P.M. We will be meeting at the snack bar entrance, which is located on East Houston Street, at First Park in Manhattan. If you are considering responding to this RFP, please make every effort to attend this recommended site visit.

TELECOMMUNICATION DEVICE FOR THE DEAF (TDD) 212-504-4115

Use the following address unless otherwise specified in notice, to secure, examine or submit bid/proposal documents, vendor pre-qualification and other forms; specifications/ blueprints; other information; and for opening and reading of bids at date and time specified above.

Park and Recreation, The Arsenal-Central Park, 830 Fifth Avenue, Room 407, New York, NY 10021. Charlotte Hall (212) 360-1397, fax: (212) 360-3434, charlotte.hall@parks.nyc.gov

j25-f7

RENOVATION, OPERATION AND MAINTENANCE OF A HIGH-QUALITY RESTAURANT, CATERING FACILITY, AND SNACK BAR – Competitive Sealed Proposals – Judgment required in evaluating proposals - PIN# R104-R – DUE 03-17-11 AT 3:00 P.M. – At South Shore Golf Course, Staten Island.

There will be a recommended proposer meeting on Tuesday, February 15, 2011 at 11:00 A.M. at the proposed concession site, which is located between the West Shore Expressway and Alverson Avenue, off Huguenot Avenue, Staten Island. We will be meeting in front of the current restaurant. If you are considering responding to this RFP, please make every effort to attend this recommended meeting. Parks will arrange site tours with potential proposers by appointment.

TELECOMMUNICATION DEVICE FOR THE DEAF (TDD) 212-504-4115

Use the following address unless otherwise specified in notice, to secure, examine or submit bid/proposal documents, vendor pre-qualification and other forms; specifications/ blueprints; other information; and for opening and reading of bids at date and time specified above.

Parks and Recreation, The Arsenal-Central Park, 830 Fifth Avenue, Room 407, New York, NY 10021. Davita Mabourakh (212) 360-1397, fax: (212) 360-3434, davita.mabourakh@parks.nyc.gov

j24-f4

SALE OF NATIVE AMERICAN CUISINE FROM A MOBILE FOOD UNIT – Competitive Sealed Proposals – Judgment required in evaluating proposals - PIN# M7-2-CG-2011 – DUE 02-25-11 AT 3:00 P.M. – At Bowling Green, Manhattan.

TELECOMMUNICATION DEVICE FOR THE DEAF (TDD) 212-504-4115

Use the following address unless otherwise specified in notice, to secure, examine or submit bid/proposal documents, vendor pre-qualification and other forms; specifications/ blueprints; other information; and for opening and reading of bids at date and time specified above.

Parks and Recreation, The Arsenal-Central Park, 830 Fifth Avenue, Room 407, New York, NY 10021. Rachel Aland (212) 360-1397, fax: (212) 360-3434, rachel.aland@parks.nyc.gov

j19-fl

SANITATION

AGENCY CHIEF CONTRACTING OFFICER

■ SOLICITATIONS

Goods & Services

PNEUMATIC TIRE CASING RETREAD AND REPAIR – Competitive Sealed Bids – PIN# 82711ME00007 – DUE 02-23-11 AT 11:00 A.M. – Bid Estimate \$3,000,000.00 - \$4,000,000.00. Bid document deposit is \$80.00. Payment of \$80.00 deposit is refundable. Certified checks and money orders are accepted, make payable to the “Comptroller, City of New York.” Performance and payment bonds are not required.

Submit notification of conflicts, errors and omission in bid document before 5:00 P.M., February 9, 2011 to agency contact person Michael Russell at (718) 334-9369. Mail to Bureau of Motor Equipment, 52-35 58th Street, Woodside, New York 11377 or by fax to (718) 334-9032. VSID#: TBD.

Use the following address unless otherwise specified in notice, to secure, examine or submit bid/proposal documents, vendor pre-qualification and other forms; specifications/ blueprints; other information; and for opening and reading of bids at date and time specified above.

Department of Sanitation, 51 Chambers Street, Room 801, Room 806, New York, NY 10007. ACCO (917) 237-5357, fax: (212) 788-7969.

■ j31

SMALL BUSINESS SERVICES

PROCUREMENT

■ SOLICITATIONS

Services (Other Than Human Services)

FASTTRAC PROGRAM SERVICES – Request for Proposals – PIN# 801SBS110006 – DUE 03-07-11 AT 3:00 P.M. – FastTrac courses provide participants access to one-on-one assistance and interactive presentations from experienced entrepreneurs and connect them to business assistance services to improve their chances of success in the economic climate. The main objective of FastTrac is to help aspiring entrepreneurs and existing businesses hone the skills needed to start, manage and grow a successful business in the current economy. There are two FastTrac courses for entrepreneurs that are offered at no cost to New Yorkers: FastTrac NewVenture and FastTrac GrowthVenture.

NYC Department of Small Business Services is seeking appropriately qualified vendors to directly manage the day to day aspects of the FastTrac program: marketing and outreach, recruitment and management of Facilitators and Business Coaches, recruitment and management of guest speakers, classroom space, participant registration, budget, class logistics, reporting and evaluating program performance, alumni communication and networking, and coordination with NYC Business Solutions.

This solicitation is being issued pursuant to New York City Procurement Policy Board Rules, in accordance with Section 3-03, Competitive Sealed Proposals.

RFP package may be downloaded from the SBS website at www.nyc.gov/sbs, or obtained in person at the NYC Department of Small Business Services, Procurement Unit, 110 William Street, 7th Fl., New York, NY 10038, Monday through Friday, between the hours of 9:00 A.M. to 5:00 P.M., excluding holidays and weekends, beginning on January 25, 2011 and continuing until March 7, 2011.

A pre-proposal conference for interested applicants will be held on February 8, 2011 from 3:00 P.M. - 5:00 P.M., at 110 William Street, 4th Fl., EDC Conference Room, New York, NY 10038. Space constraints limit attendance to two persons per proposing organization (attendance need not be confirmed). All questions regarding this solicitation shall be due no later than 12:00 P.M. on February 11, 2011.

The original and four (4) copies of the complete proposal and all attachments must be hand-delivered or sent through certified mail to the address listed in the RFP, no later than 3:00 P.M., on March 7, 2011. Proposals received after the due date and time are late and shall not be accepted by the Agency, except as provided under New York City's Procurement Policy Board Rules.

Use the following address unless otherwise specified in notice, to secure, examine or submit bid/proposal documents, vendor pre-qualification and other forms; specifications/ blueprints; other information; and for opening and reading of bids at date and time specified above.

Department of Small Business Services, 110 William Street, 7th Floor, New York, NY 10038. Daryl Williams (212) 618-8731, fax: (212) 618-8867, procurementhelpdesk@sbs.nyc.gov

j25-31

SPECIAL MATERIALS

COMPROLLER

■ NOTICE

NOTICE OF ADVANCE PAYMENT OF AWARDS PURSUANT TO THE STATUTES IN SUCH cases made and provided, notice is hereby given that the Comptroller of the City of New York, will be ready to pay, at 1 Centre St., Rm. 629, New York, NY 10007 on February 1, 2011, to the person or persons legally entitled an amount as certified to the Comptroller by the Corporation Counsel on damage parcels, as follows:

Damage Parcel No	Block	Lot
36	12081	P/O 191
37	12081	P/O 193
38	12081	P/O 195
39	12081	P/O 197
40	12081	P/O 199

Acquired in the proceeding, entitled: 142ND STREET FROM BASCOM AVE. TO SUTTER AVE. subject to any liens and encumbrances of record on such property. The amount advanced shall cease to bear interest on the specified date above.

JOHN C. LIU
Comptroller

j18-fl

NOTICE OF ADVANCE PAYMENT OF AWARDS PURSUANT TO THE STATUTES IN SUCH cases made and provided, notice is hereby given that the Comptroller of the City of New York, will be ready to pay, at 1 Centre St., Rm. 629, New York, NY 10007 on February 4, 2011 to the person or persons legally entitled an amount as certified to the Comptroller by the Corporation Counsel on damage parcels, as follows:

Damage Parcel No.	Block	Lot
46	120801	P/O 240

Acquired in the proceeding, entitled: 142ND STREET FROM BASCOM AVE. TO SUTTER AVE. subject to any liens and encumbrances of record on such property. The amount advanced shall cease to bear interest on the specified date above.

JOHN C. LIU
Comptroller

j21-f4

CITY RECORD

■ NOTICE

**MONTHLY INDEX
December 2010**

PUBLIC HEARINGS & MEETINGS
*See Also: Procurement Agency Rules

- AGING—3
- BOARD MEETINGS—6, 13, 20, 27
- BOROUGH PRESIDENT
 - Brooklyn—1-7, 29-30
 - Bronx—1, 14-20
 - Staten Island—28-30
 - Queens—3-9
- CITY COUNCIL—1-6, 8-14, 16-20
- CITY PLANNING COMMISSION—1, 2-15, 22-30
- CITY UNIVERSITY—20, 27
- CITYWIDE ADMINISTRATIVE SERVICES—10
- CIVILIAN COMPLAINT REVIEW BOARD—2-8
- COMMUNITY BOARDS—1-21, 22-30
- COMPROLLER—8, 17
- CONSUMER AFFAIRS—17, 30
- DESIGN COMMISSION—9
- ECONOMIC DEVELOPMENT CORPORATION—10-14
- EDUCATION—9
- EDUCATION CONSTRUCTION FUND—21-30
- EDUCATION RETIREMENT SYSTEM—7-13
- EMPLOYEES' RETIREMENT SYSTEM—1-2, 7-13
- ENVIRONMENTAL CONTROL BOARD—6-8
- ENVIRONMENTAL PROTECTION—9, 22
- EQUAL EMPLOYMENT PRACTICES COMMISSION—7-14
- HEALTH & MENTAL HYGIENE—9, 17, 23
- INDUSTRIAL DEVELOPMENT AGENCY—27
- LABOR RELATIONS—1
- LANDMARKS PRESERVATION COMMISSION—1-14, 16-30

- LOFT BOARD—1-3, 15-17
- MAYOR, OFFICE OF THE —2, 15, 30
- NYC & COMPANY—23
- PARKS & RECREATION—23
- STANDARDS & APPEALS—1-2, 15-16, 27
- TAXI & LIMOUSINE COMMISSION—8
- TRANSPORTATION—1-22, 30
- VOTER ASSISTANCE COMMISSION—10-16

COURT NOTICE SUPREME COURT

RICHMOND COUNTY
Notice of Acquisition Index Number (CY) 4025/10, South Railroad Street—1-3

PROPERTY DISPOSITION
*See Also: Public Hearings & Meetings

CITYWIDE ADMINISTRATIVE SERVICES

Sealed Bids—1-7

HOUSING PRESERVATION & DEVELOPMENT—3, 13
POLICE—Daily**PROCUREMENT****ADMINISTRATION FOR CHILDREN'S SERVICES**—2, 20, 22, 28
Awards—16
Intent to Award—29**AGING**

Awards—6

BROOKLYN BRIDGE PARK—9**BROOKLYN NAVY YARD**—7, 27**CITY UNIVERSITY**—3, 13-20, 21, 23-30**CITYWIDE ADMINISTRATIVE SERVICES**—1, 2, 3, 6, 7, 8, 13, 14, 16, 17, 20, 21, 22, 28, 29

Vendor Lists—Daily

Awards—1, 2, 6, 7, 8, 9, 10, 13, 14, 20, 21, 22, 23, 27, 29

COMPROLLER—20

Vendor Lists—13-17

CORRECTION—30**DESIGN & CONSTRUCTION**—7, 8, 9, 13, 14, 22, 27, 28

Awards—2, 8, 14

ECONOMIC DEVELOPMENT CORPORATION—6, 16, 21**EDUCATION**—1, 2, 3, 8, 10-16, 21, 22, 29**EMERGENCY MANAGEMENT**

Awards—2, 27

EMPLOYEES' RETIREMENT SYSTEM

Awards—23, 27

ENVIRONMENTAL PROTECTION—1, 6, 8, 13, 15, 20, 22**FINANCE**—1

Awards—17

Intent to Award—8-14

HEALTH & HOSPITALS CORPORATION—Daily**HEALTH & MENTAL HYGIENE**—Daily

Awards—1, 8, 17, 20, 29

HOMELESS SERVICES—Daily

Award—9, 10

HOUSING AUTHORITY—2, 3, 6, 7, 8, 13, 15, 20, 22, 23, 27, 29, 30**HOUSING PRESERVATION & DEVELOPMENT**—1-3, 22-29**HUMAN RESOURCES ADMINISTRATION**

Intent to Award—7, 16

Awards—2, 3, 6, 7, 9, 10, 13, 17, 27, 28, 29, 30

INFORMATION TECHNOLOGY & TELECOMMUNICATIONS

Awards—3, 17

JUVENILE JUSTICE—Daily**LAW**

Awards—8

Intent to Award—8-14

MAYOR, OFFICE OF THE

Intent to Award—27

PARKS & RECREATION—1-7, 8, 10, 15, 17, 22, 28

Awards—3, 7, 8, 17, 20, 21, 22, 28

POLICE—23, 29-30

Awards—27

SANITATION—14**SCHOOL CONSTRUCTION AUTHORITY**—1, 2, 17, 21, 27, 29, 30**SMALL BUSINESS SERVICES**

Awards—29, 30

TAXI & LIMOUSINE COMMISSION—20**TRANSPORTATION**—1, 9, 23, 27**TRIBOROUGH BRIDGE & TUNNEL AUTHORITY**—28**AGENCY PUBLIC HEARINGS ON CONTRACT AWARDS****ADMINISTRATION FOR CHILDREN SERVICES**—10, 27**AGING**—15, 27-29**CRIMINAL JUSTICE COORDINATOR**—1, 3, 8, 10, 22**DESIGN & CONSTRUCTION**—3, 22**HEALTH & MENTAL HYGIENE**—10**HOMELESS SERVICES**—3**HOUSING PRESERVATION & DEVELOPMENT**—23**HUMAN RESOURCES ADMINISTRATION**—8, 22, 23**INFORMATION TECHNOLOGY & TELECOMMUNICATIONS**—3**PARKS & RECREATION**—3, 14-16**RECORD & INFORMATION SERVICES**—23**SMALL BUSINESS SERVICES**—3, 22**YOUTH & COMMUNITY DEVELOPMENT**—29**AGENCY RULES****BUILDINGS**

Notice of Opportunity to Comment on Proposed Rule Relating to Required Insurance for Permittees—1

Notice of Opportunity to Comment on Proposed Amendments to Rule 101-03 Relating to Fees—16

Notice of Opportunity to Comment on Proposed Amendments to Rules Relating to the Safety Code for Existing Elevators and Escalators—22

Notice of Adoption of Rule Regarding Façade Inspections—28

Notice of Opportunity to Comment on Proposed Rule Relating to the Requirement for Mast Climbers—30

BUSINESS INTEGRITY COMMISSION

Notice of Adoption of Rules Relating to Public Wholesale Markets, Seafood Distribution Areas, Seafood Distribution Outside Seafood Areas, and Market Businesses, Labor Unions and Labor Organizations Operating in Seafood Distribution Areas—6

CITY PLANNING

Notice of Opportunity to Comment on Proposed Rules Regarding Processing of Applications for Permitted Parking Pursuant to Section 93-82 of the Zoning Resolution—20

CONFLICTS OF INTEREST BOARD

Notice of Opportunity to Comment on Proposed Rules Establishing Procedures to Appeal a Designation as a Required Filer of a Financial Disclosure Report—2

CONSUMER AFFAIRS

Notice of Public Hearing and Opportunity to Comment on Proposed Amendments to Rule Regarding Horsedrawn Cabs and Drivers—3

Notice of Public Hearing and Opportunity to Comment on Proposed Amendments to Rule Regarding the Licensing of Process Servers—28

ENVIRONMENTAL CONTROL BOARD

Notice of Promulgation of Rule (Health Code and Miscellaneous Food Vendor Violations Penalty Schedule)—22

Notice of Promulgation of Rule (Buildings Penalty Schedule II)—22

Notice of Promulgation of Rule (Recycling-Sanitation Collection Rules Penalty Schedule)—22

FINANCE

Notice of Opportunity to Comment on Proposed Amendments to Filing Rules for New York City Income and Excise Taxes—23

FIRE

Notice of Opportunity to Comment on the Proposed Promulgation of a New Fire Department Rule, 3 RCNY 4900-03, Entitled "Schedule of Charges for Fire Department Motorist Services"—9

HEALTH & MENTAL HYGIENE

Notice of Intention to Amend Article 151 of the New York City Health Code—17

Notice of Intention to Amend Article 7 of the New York City Health Code—17

Notice of Intention to Amend Article 175 of the New York City Health Code—17

Notice of Intention to Amend Article 173 of the New York City Health Code—17

Notice of Intention to Amend Title 24 of the Rules of the City of New York to Add a New Chapter 29 (Animal Population Control Program)—29

HOUSING PRESERVATION & DEVELOPMENT

Notice of Promulgation of Rules Governing the Inclusionary Housing Provisions of the New York City Zoning Resolution—23

LANDMARKS PRESERVATION COMMISSION

Proposed Amendments to Existing Landmarks Preservation Commission Rules Relating to Work on Designated Properties—16

Proposed Amendment to Rules for Fees for Certain Types of Applications—16

LOFT BOARD

Notice of Opportunity to Comment on Proposed Rules Regarding Multiple Dwelling Law—15

PARKS & RECREATION

Notice of Opportunity to Comment on Proposed Rule Regarding Increased Fees for the Use, Governance and Protection of Public Parks and of all Property Under the Charge or Control of the Department of Parks and Recreation—23

SANITATION

Notice of Adoption of Final Rule Governing the Collection of Recyclable Materials Generated in Residential Buildings—16

TAXI & LIMOUSINE COMMISSION

Notice of Promulgation of Rules (Amending the TLC's Adjudication Rules)—2

Notice of Public Hearing and Opportunity to Comment on Proposed Rules, Regarding Certain Licensees Keep Current Mailing Addresses on File with the TLC—6

Notice of Public Hearing and Opportunity to Comment on Proposed Rules Governing the Process and Requirements for License Application and Renewals—17

Notice of Opportunity to Comment on Proposed Rules to Increase Certain License and Inspection Fees—30

TRANSPORTATION

Notice of Opportunity to Comment on Proposed Amendments to the Rules Relating to Protected Street Restoration Requirements—13, 14

Notice of Opportunity to Comment on Proposed Amendments to the Rules Regarding Annual Overweight Load Truck Permits—21

Notice of Opportunity to Comment on Proposed Amendments to the Rules Relating to Construction Activity, Underground Street Access Covers, Transformer Vault Covers and Gratings and Excavation and Restoration Requirements—27

Notice of Adoption to the Rules Relating to the Posting of a Sign Setting Forth Bicycle Safety Procedures—28

Notice of Opportunity to Comment on Proposed Amendments to the Rules Relating to Permits, Construction Activity and Excavation and Restoration Requirements—30

SPECIAL MATERIALS**CHANGES IN PERSONNEL**—1, 2, 3, 7, 8, 9, 10, 13, 14, 20, 21, 27, 28**CITY RECORD**

November Monthly Index—30

CITY PLANNING—15, 22**CITYWIDE ADMINISTRATIVE SERVICES**

Fuel Oil Price No. 6581—3

Fuel Oil Price No. 6582—3

Fuel Oil Price No. 6583—3

Fuel Oil Price No. 6584—3

Fuel Oil Price No. 6585—10

Fuel Oil Price No. 6586—10

Fuel Oil Price No. 6587—10

Fuel Oil Price No. 6588—10

Fuel Oil Price No. 6589—17

Fuel Oil Price No. 6590—17

Fuel Oil Price No. 6591—17

Fuel Oil Price No. 6592—17

Fuel Oil Price No. 6593—23

Fuel Oil Price No. 6594—23

Fuel Oil Price No. 6595—23

Fuel Oil Price No. 6596—23

Fuel Oil Price No. 6597—30

Fuel Oil Price No. 6598—30

Fuel Oil Price No. 6599—30

Fuel Oil Price No. 6600a-30

COMPROLLER—1**COLLECTIVE BARGAINING**—6**HEALTH & MENTAL HYGIENE**

Notice of Concept Paper—6-10, 13-17

HOUSING PRESERVATION & DEVELOPMENT—10-21**LABOR RELATIONS**

Executed Contract: EMS Chiefs Agreement—9

SCHOOL CONSTRUCTION AUTHORITY—14**TAXI & LIMOUSINE COMMISSION**—13**TRANSPORTATION**—17-30**YOUTH & COMMUNITY DEVELOPMENT**—28**LATE NOTICES****HEARINGS & MEETINGS**

Aging—3

City Planning Commission—27

Community Boards—30

Economic Development Corporation—10

Transportation—30

PROCUREMENT

Citywide Administration Services—7

Design & Construction—22

Economic Development Corporation—6

Health & Hospitals Corporation—1

Housing Authority—6, 13

Parks & Recreation—22

School Construction Authority—1

Taxi & Limousine Commission—20

AGENCY PUBLIC HEARINGS ON CONTRACT AWARDS

Administration's for Children Services—10

Criminal Justice Coordinator—1, 8, 10

Design & Construction—3

Health & Mental Hygiene—10

Human Resources Administration—8

Information Technology & Telecommunications—3

Parks & Recreation—14

SUPPLEMENT TO THE CITY RECORD**COMPROLLER**

The Comptroller's Report on Status of Existing Capital Projects on July 1, 2010—1

City Council

Stated Meeting of Thursday, September 16, 2010—2

Stated Meeting of Wednesday, September 29, 2010—9

Stated Meeting of Wednesday, October 13, 2010—23

j31

HOUSING AND COMMUNITY RENEWAL OFFICE**NOTICE****New York State Division of Housing and Community Renewal Office of Rent Administration**

Gertz Plaza

92-31 Union Hall Street

Jamaica, NY 11433

THE 2011 FINDINGS REGARDING THE PRICE CHANGES AND MAXIMUM CONSUMPTION STANDARDS FOR HEATING FUELS PURSUANT TO THE FUEL COST ADJUSTMENT LAW FOR RENT CONTROLLED TENANTS

The findings of price changes for heating fuels from January 1, 2010 to December 31, 2010 are shown in Table I. They are based on a study of home heating oil prices provided by the Journal of Commerce, the NYC Rent Guidelines Board oil survey, a NYS Energy Research and Development Authority report, rate schedules for utility companies providing heating fuel, and a survey of retail coal vendors.

**TABLE I
PRICE CHANGES FOR HEATING FUELS
FROM JANUARY 1, 2010 TO DECEMBER 31, 2010**

Type of Fuel	Price Change	Per Unit of Fuel
#2 Oil	+ \$0.4856 (increase)	Gallon
#4 Oil	+ \$0.3971 (increase)	Gallon
#6 Oil	+ \$0.4128 (increase)	Gallon
Gas: National Grid of New York	-\$0.1675 (decrease)	CCF(100 Cubic feet)
Gas: Con Edison	-\$0.1598 (decrease)	CCF(100 Cubic feet)
Gas: National Grid	-\$0.2159 (decrease)	CCF(100 Cubic feet)
Temperature controlled or Interruptible Gas Systems only:		
National Grid of New York	-\$0.0654 (decrease)	CCF(100 Cubic feet)
Con Edison	-\$0.3035 (decrease)	CCF(100 Cubic feet)
Electricity	+ \$0.0342 (increase)	KWH (Kilowatt Hours)
Steam	+ \$3.6486 (increase)	Mlb (1,000 lbs.)
Coal	\$0.0000 (no change)	Ton

Based upon consumption patterns in rent controlled properties which use heating oil and using British Thermal Unit (BTU) equivalents for various types of heating fuels, the Annual Maximum Consumption Standards are shown in Table II below.

**TABLE II
ANNUAL MAXIMUM CONSUMPTION STANDARDS
PER ROOM
FROM JANUARY 1, 2010 TO DECEMBER 31, 2010**

Type of Fuel	Heat and Hot Water	Hot Water Only
Oil (All types)	200 Gallons	55 Gallons
Gas	270 CCF	75 CCF
Electricity	8,120 KWH	2,244 KWH
Steam	27.8 Mlbs	7.6 Mlbs
Coal	1.08 Tons	0.30 Ton

The rent adjustment is calculated by multiplying the Price Change by the Actual Annual Consumption Per Room, not to exceed the Annual Maximum Consumption Standard Per Room for the type of fuel used in the building. That amount is then multiplied by seventy-five percent (75%) and divided by twelve (12) to arrive at the Monthly Rent Adjustment Per Room for the building.

IMPORTANT NOTICE: The price of all gas (including interruptible service) decreased during calendar year 2010. Owners utilizing these previously mentioned fuels and who had obtained an increase for fuel cost since December 31, 1979 are **required** to serve all affected tenants. In addition, the owner must file the necessary forms with the Division of Housing and Community Renewal (DHCR) for a reduction of fuel costs within sixty days of this finding and effectuate such reductions. If an owner fails to do so, all fuel cost adjustments previously obtained will be forfeited for a period of twelve months and the reduction will be retroactive to January 1, 2011.

Promulgated on this twenty-fifth day January 2011, pursuant to Local Law No. 20 of 1980.

/s/
Woody Pascal
Deputy Commissioner

j31

CHANGES IN PERSONNEL

DEPT OF PARKS & RECREATION FOR PERIOD ENDING 12/23/10						
NAME	NUM	SALARY	ACTION	PROV	EFF DATE	
AHERN	RYAN P	12626	\$52162.0000	INCREASE	NO	12/01/10
ALEXANDER	ANJANETT N	80633	\$9.2100	RESIGNED	YES	11/30/10
ALLEN	JAMORRA L	80633	\$9.2100	RESIGNED	YES	11/07/10
AMODEO	DANIEL	91925	\$48.8400	APPOINTED	YES	12/09/10
AMOS	THEODORE E	91406	\$11.1100	RESIGNED	YES	11/24/10
ANDERSON	KEITH F	90641	\$14.0200	APPOINTED	YES	12/09/10
ANDRADE	ANDREA N	80633	\$9.2100	RESIGNED	YES	11/22/10
AYALA	TANYA A	80633	\$9.2100	RESIGNED	YES	10/26/10
BROWN	JOY A	80633	\$9.2100	RESIGNED	YES	11/25/10
BURCK	JOSEPH W	81660	\$50699.0000	RETIRED	YES	12/16/10
BURCK	JOSEPH W	90641	\$33662.0000	RETIRED	YES	12/16/10
BUTLER	CHARELL J	80633	\$9.2100	RESIGNED	YES	10/26/10
CARPIO	CRYSTAL M	06664	\$14.9000	APPOINTED	YES	11/01/10
CASTILLO	CARLOS	80633	\$9.2100	RESIGNED	YES	11/12/10
CASTRO CASTILLO	HENRY E	91406	\$11.1100	RESIGNED	YES	11/24/10
COLE	REGINA M	80633	\$9.2100	RESIGNED	YES	11/14/10
COOPER	JANICE	80633	\$9.2100	RESIGNED	YES	10/29/10
COULTMAN	EDMUND A	12626	\$52162.0000	INCREASE	NO	12/01/10
DONOGHUE	SUSAN	10026	\$146000.0000	INCREASE	YES	12/12/10
EMMARCO	JEANETTE	12626	\$52162.0000	INCREASE	NO	12/01/10
FAN	HELEN H	13620	\$45000.0000	INCREASE	NO	12/12/10
GILCHRIST	JAMIKA A	80633	\$9.2100	RESIGNED	YES	11/24/10
GLEASON	DANIEL	81309	\$22.5300	APPOINTED	YES	12/13/10
GONZALEZ	ANGEL J	91406	\$11.1100	RESIGNED	YES	11/24/10
GUILBERT	JENNIFER E	91406	\$11.1100	RESIGNED	YES	11/24/10
HAN	ALEXANDE S	56058	\$62000.0000	INCREASE	YES	12/12/10
HARDEN	ANTON	80633	\$9.2100	RESIGNED	YES	12/14/10
HARELL	DANIELLE O	80633	\$9.2100	RESIGNED	YES	10/27/10
HEINEMANN	ZHENESSE	10072	\$43.7900	APPOINTED	YES	12/07/10
HILL	PATRICIA	91644	\$49.2100	APPOINTED	YES	12/05/10
HOLDER	ANNIKA S	10026	\$135000.0000	INCREASE	YES	10/15/10
HOPKINSON	AMERA S	80633	\$9.2100	RESIGNED	YES	11/18/10
HOUSTON III	WALTER K	91406	\$11.1100	RESIGNED	YES	11/24/10
ICE	NILSA M	80633	\$9.2100	RESIGNED	YES	10/09/10
JAMHOURY	JESSICA	56057	\$34000.0000	RESIGNED	YES	11/13/10
JONES	ROSALEE D	80633	\$9.2100	RESIGNED	YES	11/13/10
LANE	RISSE	80633	\$9.2100	RESIGNED	YES	11/30/10
LEE	OCTAVIA L	80633	\$9.2100	RESIGNED	YES	11/06/10
LILLIENTHAL	TONIE	80633	\$9.2100	RESIGNED	YES	10/06/10
LOPEZ	JESSICA	80633	\$9.2100	RESIGNED	YES	11/17/10
LOPEZ	JOSE D	06664	\$14.9000	APPOINTED	YES	12/02/10
MANIN	EDDIE	80633	\$9.2100	RESIGNED	YES	10/26/10
MANN	SINIOUS L	80633	\$9.2100	RESIGNED	YES	11/13/10
MARCELLE	SHA-REKA	91406	\$11.1100	RESIGNED	YES	11/24/10
MCCARTHY	KATHLEEN	56058	\$27.3700	INCREASE	YES	11/08/10
MILLEVOI	CHRISTOP A	91644	\$49.2100	APPOINTED	YES	12/05/10
NG	YEUK C	13651	\$60000.0000	INCREASE	NO	12/12/10
NIEVES	YOLANDA	80633	\$9.2100	RESIGNED	YES	11/20/10
OKORIE	LOVE	80633	\$9.2100	RESIGNED	YES	11/10/10
PAN	ZHOXIN	81307	\$8.1000	APPOINTED	YES	12/07/10
PASSLEY	RICHARD A	91406	\$11.1100	RESIGNED	YES	11/24/10
PEREZ	ERI	80633	\$9.2100	RESIGNED	YES	11/23/10
POLK	BRENDA L	80633	\$9.2100	APPOINTED	YES	12/10/10
PROVENZALE	PETER J	81361	\$50164.0000	RESIGNED	NO	12/04/10
RICH	SHAMERE L	80633	\$9.2100	RESIGNED	YES	11/18/10
RITCHIE	MELISSA J	71205	\$16.4100	RESIGNED	YES	09/07/10
RIVERA	IRVING	80633	\$9.2100	RESIGNED	YES	12/01/10
RIVERA	NORA I	80633	\$9.2100	RESIGNED	YES	12/03/10
RIVERS	RONELL N	80633	\$9.2100	APPOINTED	YES	12/09/10
ROBINSON	CHRISTIN	80633	\$9.2100	RESIGNED	YES	11/04/10
ROSA	WILFREDO	80633	\$9.2100	RESIGNED	YES	10/17/10
ROSADO	MYRNA	80633	\$9.2100	RESIGNED	YES	11/20/10
ROSARIO	WANDA	80633	\$9.2100	RESIGNED	YES	10/26/10
SANCHEZ	ZULENA	91406	\$13.2700	RESIGNED	YES	10/06/06
SANDERS	BARBARA Y	80633	\$9.2100	RESIGNED	YES	12/02/10
SCARDER	INGHAM S	91406	\$11.1100	RESIGNED	YES	11/24/10
SERRAGO	EUGENE A	81106	\$44612.0000	RETIRED	NO	12/07/10
SHAW	KEITH W	80633	\$9.2100	RESIGNED	YES	11/06/10
SIDORENKO	LYUBOV	91406	\$11.1100	RESIGNED	YES	11/24/10
SIMON	EARLINE F	80633	\$9.2100	RESIGNED	YES	11/14/10
SIMPSON	TASHEEMA A	12626	\$52162.0000	INCREASE	NO	12/08/10
SIUAZDA	ZOERRAIN	80633	\$9.2100	RESIGNED	YES	11/19/10
SMITH	YVONNE S	80633	\$9.2100	RESIGNED	YES	11/14/10
SMITH III	JOHN M	91406	\$11.1100	RESIGNED	YES	11/24/10
SPENCER	ZINA	80633	\$9.2100	RESIGNED	YES	11/24/10
STARK	CORINTH	80633	\$9.2100	RESIGNED	YES	10/28/10
STRICKLAND	COREY	80633	\$9.2100	RESIGNED	YES	10/22/10
SUAREZ	CHRISTIA J	06664	\$14.9000	APPOINTED	YES	11/01/10
TAL	IVETTE	80633	\$9.2100	RESIGNED	YES	10/30/10
THOMPSON	KARL A	80633	\$9.2100	RESIGNED	YES	10/02/10
TORRES	MARCOS	80633	\$9.2100	RESIGNED	YES	11/13/10
TSAO	AMY	13651	\$60000.0000	RESIGNED	YES	12/15/10
TYLER	SHAQUANN S	80633	\$9.2100	RESIGNED	YES	11/05/10
ULLOA	MATTHEW J	10209	\$9.0000	APPOINTED	YES	12/02/10
ULLOA	YLIANE	06664	\$14.9000	APPOINTED	YES	12/06/10
VALENTIC	DINKO	91644	\$49.2100	APPOINTED	YES	12/05/10
VARGHESE	JACOB P	12626	\$52162.0000	INCREASE	NO	12/01/10
VILLARREAL	ALBERTO	06664	\$14.9000	APPOINTED	YES	12/02/10
WILLIAMS	THEODORE E	80633	\$9.2100	RESIGNED	YES	11/14/10
WRIGHT	TYRONE A	80633	\$9.2100	APPOINTED	YES	12/10/10
XAVIER	KERLINE	80633	\$9.2100	RESIGNED	YES	09/10/10
ZARGANIFARD	PAYAM	80633	\$9.2100	RESIGNED	YES	11/22/10
ZHANG	SHU Y	06664	\$14.9000	APPOINTED	YES	12/02/10

DEPT. OF DESIGN & CONSTRUCTION FOR PERIOD ENDING 12/23/10						
NAME	NUM	SALARY	ACTION	PROV	EFF DATE	
AJAERO	INNOCENT	22427	\$66051.0000	DECEASED	NO	12/05/10
HUANG	BEN	20215	\$43133.0000	APPOINTED	NO	01/01/00
NEWMAN	DANIEL H	21210	\$48126.0000	APPOINTED	YES	12/12/10

DEPT OF INFO TECHNOLOGY & TELE FOR PERIOD ENDING 12/23/10						
NAME	NUM	SALARY	ACTION	PROV	EFF DATE	
BIMONTE	MICHAEL	60888	\$87289.0000	APPOINTED	YES	11/21/10
COLLINS	THOMAS G	60888	\$31544.0000	APPOINTED	YES	11/21/10
DANCHECK	MICHAEL S	60888	\$34017.0000	APPOINTED	YES	11/21/10
RAMOS	MIRIAM	10260	\$34017.0000	RESIGNED	NO	12/16/10
WALL	FREDERIC B	60888	\$34017.0000	APPOINTED	YES	11/21/10

CONSUMER AFFAIRS FOR PERIOD ENDING 12/23/10						
NAME	NUM	SALARY	ACTION	PROV	EFF DATE	
DAVIS	TARAH N	56057	\$37169.0000	APPOINTED	YES	12/12/10
MANN	RAJU D	56057	\$30431.0000	RESIGNED	YES	06/30/04
RIVERA	DIANA	56057	\$32321.0000	APPOINTED	YES	12/12/10

DEPT OF CITYWIDE ADMIN SVCS FOR PERIOD ENDING 12/23/10						
NAME	NUM	SALARY	ACTION	PROV	EFF DATE	
GUEVARA	MARIA-LU	10124	\$54947.0000	RESIGNED	YES	12/05/10
RUSTIN	WAYNE A	95635	\$183000.0000	APPOINTED	YES	12/12/10
SMITH	EVELYN	90644	\$31125.0000	DECEASED	YES	11/13/10
WARD	THERESA	95634	\$162240.0000	APPOINTED	YES	12/12/10

DISTRICT ATTORNEY-MANHATTAN FOR PERIOD ENDING 12/23/10						
NAME	NUM	SALARY	ACTION	PROV	EFF DATE	
DAVIS	TARAH N	56056	\$31350.0000	RESIGNED	YES	12/12/10
DOLINGER	SAMUEL H	56057	\$41619.0000	RESIGNED	YES	12/12/10
FISTEL	MICHAEL K	30114	\$113250.0000	RESIGNED	YES	12/10/10
LENTINI	MICHAEL D	30854	\$97885.0000	RESIGNED	YES	12/17/10
LIANG	JAY	30853	\$46635.0000	RESIGNED	YES	12/02/10
MCCABE	BERNARD M	91769	\$369.2500	INCREASE	YES	10/13/09
MOTTO	STEFANI L	56057	\$43000.0000	APPOINTED	YES	12/05/10
MOY	MICHELE	56058	\$54213.0000	INCREASE	YES	12/05/10
SAUER	CHLOE M	56057	\$41619.0000	RESIGNED	YES	12/15/10
SOBOTKIN	DAVID M	30114	\$72500.0000	RESIGNED	YES	12/10/10
VONSOVER	AMIR J	30114	\$78500.0000	RESIGNED	YES	12/02/10

BRONX DISTRICT ATTORNEY FOR PERIOD ENDING 12/23/10						
NAME	NUM	SALARY	ACTION	PROV	EFF DATE	
BATTERSBY	TRACEY	52406	\$24756.0000	APPOINTED	YES	12/12/10

BENITEZ	CLARITZA	52406	\$24756.0000	RESIGNED	YES	12/09/10
DAVIS	PAULA	10252	\$32642.0000	INCREASE	NO	08/30/10
EDWARDS JR	GENE A	52406	\$24756.0000	APPOINTED	YES	12/12/10
ETHEREDGE	TYESHA V	52406	\$24756.0000	APPOINTED	YES	12/05/10
GARCIA	CINDY M	56057	\$34821.0000	APPOINTED	YES	12/05/10
GRAHAM	ROBERTTA	52406	\$24756.0000	APPOINTED	YES	12/12/10
HAWS	CHRISTIN G	52406	\$24756.0000	APPOINTED	YES	12/12/10
KUM	JAN D	30114	\$92000.0000	RESIGNED	YES	12/05/10
LAFFERTY	JENNIFER M	30114	\$60500.0000	RESIGNED	YES	12/05/10
LEFLER	SARAH M	56057	\$34821.0000	APPOINTED	YES	12/05/10
MARTINEZ	DENNIS F	52406	\$24756.0000	APPOINTED	YES	12/05/10
MURRAY	JASMINE N	52406	\$24756.0000	APPOINTED	YES	12/05/10
ROMAN	LETICIA	52406	\$24756.0000	APPOINTED	YES	12/12/10
SANTANA	CANDY N	56057	\$34821.0000	APPOINTED	YES	12/05/10

DISTRICT ATTORNEY KINGS COUNTY FOR PERIOD ENDING 12/23/10						
NAME	NUM	SALARY	ACTION	PROV	EFF DATE	
AYALA	MELANIE	56057	\$34683.0000	APPOINTED	YES	12/02/10
CAMMARATA	JACLYN R	10212	\$35396.0000	APPOINTED	YES	12/05/10
DAVIS	SHANTE L	52406	\$26567.0000	APPOINTED	YES	12/05/10
DWIMOH	STEPHANI E	30114	\$159533.0000	RESIGNED	YES	12/01/10
MANCINI	STEPHANI	10212	\$35396.0000	APPOINTED	YES	12/12/10
PENA-SIEGEL	MERCEDES	56057	\$40307.0000	RESIGNED	YES	12/12/10
RUSSELL	GREGORY K	56057	\$35000.0000	APPOINTED	YES	12/05/10
SNITMAN-TOTINO	VLADLENA	56057	\$34683.0000	APPOINTED	YES	12/05/10
STYLIANOU	CHRISTIN	56057	\$34683.0000	APPOINTED	YES	12/12/10
TUCKER	TIFFANY A	56057	\$43264.0000	RESIGNED	YES	12/07/10

DISTRICT ATTORNEY QNS COUNTY FOR PERIOD ENDING 12/23/10						
NAME	NUM	SALARY	ACTION	PROV	EFF DATE	
ADAMS	NIGEL	12001	\$8.0000	APPOINTED	YES	12/10/10
BISSESSAR	CRYSTAL	12001	\$8.0000	APPOINTED	YES	07/06/10
COOPER	NABIA	12001	\$8.0000	APPOINTED	YES	07/06/10
DUPRESNE	NEIL J	12001	\$8.0000	APPOINTED	YES	07/06/10
GEDETTE	PAUL	12001	\$8.0000	APPOINTED	YES	07/06/10
LEWIS	BRITTANY	12001	\$8.0000	APPOINTED	YES	07/06/10
MARCELLE	ELISA M	12001	\$8.0000	APPOINTED	YES	07/06/10
PARKS	DIAMOND J	12001	\$8.0000	APPOINTED	YES	07/06/10
PERRY	FREDERIC	12001	\$8.0000	APPOINTED	YES	07/06/10
RILEY	MICHAEL	12001	\$8.0000	APPOINTED	YES	07/06/10
SMITH	CHERMARA	12001	\$8.0000	APPOINTED	YES	07/0

BRATHWAITE	ALEXANDE	R	70235	\$79763.0000	PROMOTED	NO	12/23/10
BROWN	PATRICK	K	70260	\$102091.0000	PROMOTED	NO	12/23/10
BUGGE	TIMOTHY	J	70266	\$156223.0000	PROMOTED	NO	12/23/10
BURNS	THOMAS		7026D	\$148365.0000	PROMOTED	NO	12/23/10
CALABRO	TARA		70235	\$79763.0000	PROMOTED	NO	12/23/10
CALBE	SENTA	E	70235	\$79763.0000	PROMOTED	NO	12/23/10
CASTRO	JOSE	A	70210	\$41975.0000	RESIGNED	NO	12/24/10
CEBALLOS	GLORIA	A	70260	\$102091.0000	PROMOTED	NO	12/23/10
CHAN	KEVIN		70235	\$79763.0000	PROMOTED	NO	12/23/10
CHANG	ELLEN		7026E	\$156223.0000	PROMOTED	NO	12/23/10
CHARLES	ERICK	J	70235	\$79763.0000	PROMOTED	NO	12/23/10
CHASAN	REBECCA	K	30087	\$69085.0000	RESIGNED	YES	12/19/10
CLARY	DENNIS	J	7026E	\$156223.0000	PROMOTED	NO	12/23/10
CLEMENT	RALPH	A	70235	\$79763.0000	PROMOTED	NO	12/23/10
COOK	WILLIAM	F	70260	\$102091.0000	PROMOTED	NO	12/23/10
COQUINCO	ERICKSON	D	70210	\$43644.0000	RESIGNED	NO	11/29/10
CORDANO	DAVID	F	70235	\$79763.0000	PROMOTED	NO	12/23/10
CORRADO	DERRICK	S	7026D	\$148365.0000	PROMOTED	NO	12/23/10
COYLE	MICHELLE	C	70260	\$102960.0000	RETIRED	NO	12/24/10
CREIGHTON	TERRENCE	E	70260	\$102091.0000	PROMOTED	NO	12/23/10
CROKE	BRIAN	M	70235	\$79763.0000	PROMOTED	NO	12/23/10
CURRAN	TERENCE	A	70235	\$79763.0000	PROMOTED	NO	12/23/10
DAILEY	COREY		7023B	\$100054.0000	PROMOTED	NO	12/23/10
DALTON	CHRISTOP	J	70260	\$102091.0000	PROMOTED	NO	12/23/10
DAVIS	CHARLENE	D	70210	\$41975.0000	RESIGNED	NO	12/24/10
DAVIS	CHERYLE		31101	\$37755.0000	INCREASE	NO	12/12/10
DAVIS	CHERYLE		10144	\$35285.0000	APPOINTED	NO	12/12/10
DAWSON	DELORES		70205	\$13.6800	RETIRED	YES	12/24/10
DECICCO	JOSEPH		70260	\$102091.0000	PROMOTED	NO	12/23/10
DELGADO	ANGEL	L	70235	\$79763.0000	PROMOTED	NO	12/23/10
DEMOS	ETHEL	S	70235	\$79763.0000	PROMOTED	NO	12/23/10
DIAZ	RAFAEL		70235	\$79763.0000	PROMOTED	NO	12/23/10
DIXSON	STEVEN	P	70235	\$79763.0000	PROMOTED	NO	12/23/10
DONOFRIO	ADAM	M	70235	\$79763.0000	PROMOTED	NO	12/23/10
DOWNING	EILEEN	T	70235	\$79763.0000	PROMOTED	NO	12/23/10
DRONE	FREDERIC	D	70235	\$79763.0000	PROMOTED	NO	12/23/10
ESSIG	JAMES	W	7026F	\$164560.0000	PROMOTED	NO	12/29/10
FELICIANO	JAIME	L	70235	\$79763.0000	PROMOTED	NO	12/23/10
FENFERT	TIMOTHY	M	70235	\$98072.0000	PROMOTED	NO	12/23/10
FIELDS	MICHELLE	S	70260	\$102091.0000	PROMOTED	NO	12/23/10
FLEARY	ROCHELLE	T	31101	\$37755.0000	INCREASE	NO	12/12/10
FLEARY	ROCHELLE	T	10144	\$35285.0000	APPOINTED	NO	12/12/10
FORSYTH	EDWARD	R	70235	\$98072.0000	RETIRED	NO	12/21/10
GALLO	JOSEPH	C	70260	\$102091.0000	PROMOTED	NO	12/23/10
GARCIA	JAY	F	70235	\$79763.0000	PROMOTED	NO	12/23/10
GARDELL, JR	STEPHEN	E	70235	\$79763.0000	PROMOTED	NO	12/23/10
GAYLE	KAYMARA	A	60817	\$35323.0000	RESIGNED	NO	12/02/10
GEORGE	ANIL	V	70235	\$79763.0000	PROMOTED	NO	12/23/10
GLAUDE	ROXANNE	J	31101	\$37755.0000	INCREASE	NO	12/12/10
GLAUDE	ROXANNE	J	10144	\$35285.0000	APPOINTED	NO	12/12/10
GODDARD	RUTHVEN	P	70235	\$79763.0000	PROMOTED	NO	12/23/10
GOLDEN	JOANN		71012	\$32710.0000	RESIGNED	NO	11/18/10
GORTON	ROLAND	J	70210	\$76488.0000	RETIRED	NO	12/24/10
GRASSO	JOSEPH		70260	\$102091.0000	PROMOTED	NO	12/23/10
GRIMM	VIRGINIA		70210	\$76488.0000	RETIRED	NO	12/27/10
GUZMAN	BETSY		70260	\$102091.0000	PROMOTED	NO	12/23/10
GUZZINO	MICHAEL	A	7023B	\$100054.0000	PROMOTED	NO	12/23/10
HADDICAN	ADRIENNE	M	70235	\$79763.0000	PROMOTED	NO	12/23/10
HAMILTON	CAROL	E	70235	\$79763.0000	PROMOTED	NO	12/23/10
HEGMANN	CHRISTOP	S	70210	\$76488.0000	RETIRED	NO	12/26/10
HERRERA	LAURA	D	70235	\$79763.0000	PROMOTED	NO	12/23/10
HERRERA	SAMUEL		70235	\$79763.0000	PROMOTED	NO	12/23/10
HERRERA	SELINA	J	7023B	\$100054.0000	PROMOTED	NO	12/23/10
HIDALGO	JOSENNY		70235	\$79763.0000	PROMOTED	NO	12/23/10
HOGAN	MARIE		71651	\$29217.0000	TERMINATED	NO	12/15/10
HOLDER	YVETTE	M	70205	\$12.9000	RETIRED	YES	12/24/10
HUGHES	BRIAN	J	70235	\$79763.0000	PROMOTED	NO	12/23/10
JACKSON	ANITA		7021B	\$94300.0000	RETIRED	NO	12/25/10
JOZWICKI	MATTHEW	E	70235	\$79763.0000	PROMOTED	NO	12/23/10
KEUTMANN	KAREN	J	50958	\$69161.0000	RETIRED	YES	12/23/10
KHAN	SHAWN	A	70260	\$102091.0000	PROMOTED	NO	12/23/10
KING	MARY	J	70235	\$79763.0000	PROMOTED	NO	12/23/10
KYDD-HARDY	JOAN	C	71012	\$32710.0000	RESIGNED	NO	11/18/10
LAFATA	JOSEPH	M	70235	\$79763.0000	PROMOTED	NO	12/23/10
LAPINSKA	EWA		70235	\$79763.0000	PROMOTED	NO	12/23/10
LEWIS	HENRY	M	70235	\$79763.0000	PROMOTED	NO	12/23/10
LIBRANTI	PETER	D	7023B	\$100054.0000	PROMOTED	NO	12/23/10
LICITRA	ERICKA	R	70260	\$102091.0000	PROMOTED	NO	12/23/10
LILLES	ELIZABET		70235	\$79763.0000	PROMOTED	NO	12/23/10
LONG	WEI		70235	\$79763.0000	PROMOTED	NO	12/23/10
MACDONALD	DAVID		70235	\$79763.0000	PROMOTED	NO	12/23/10
MAISONNET	RAUL	P	70235	\$79763.0000	PROMOTED	NO	12/23/10
MAJOR	GILBERT	H	70260	\$102091.0000	PROMOTED	NO	12/23/10
MARKS	SEAN	M	70235	\$79763.0000	PROMOTED	NO	12/23/10
MARTINEZ	ANGEL	L	70210	\$41975.0000	RESIGNED	NO	12/24/10
MARTINEZ	CHRISTIE		70210	\$41975.0000	RESIGNED	NO	12/21/10
MARTINEZ	JOSE	A	70235	\$79763.0000	PROMOTED	NO	12/23/10
MARTINEZ	TIFFANY	A	70210	\$41975.0000	RESIGNED	NO	12/24/10
MATA	WADY	S	70235	\$79763.0000	PROMOTED	NO	12/23/10
MCCANN	KENNETH	R	70260	\$102091.0000	PROMOTED	NO	12/23/10
MCCARTHY	PATRICK	J	7026F	\$164560.0000	PROMOTED	NO	12/29/10
MCKENNA	PAUL	N	70235	\$79763.0000	PROMOTED	NO	12/23/10
MCLEAN	ANTHONY	V	7021A	\$83921.0000	RETIRED	NO	12/23/10
MCMAHON	PAUL	A	70260	\$102091.0000	PROMOTED	NO	12/23/10
MENDEZ	JOSHUA	M	70235	\$79763.0000	PROMOTED	NO	12/23/10
MERCEDES	NEHEMIAS		70235	\$79763.0000	PROMOTED	NO	12/23/10
MIDDLETON	KHALEEQ	A	70210	\$41975.0000	RESIGNED	NO	12/24/10
MILLES	BONNIE	E	70235	\$79763.0000	PROMOTED	NO	12/23/10
MILLER	LUCAS	J	7023B	\$100054.0000	PROMOTED	NO	12/23/10
MINARCZYK	PETER	J	70235	\$79763.0000	PROMOTED	NO	12/23/10
MING	MARLON	O	7023B	\$100054.0000	PROMOTED	NO	12/23/10
MITCHELL	SHANIQUA	S	70210	\$41975.0000	RESIGNED	NO	12/24/10
MOBERG	ALFRED	J	7023B	\$100054.0000	PROMOTED	NO	12/23/10
MONCADA	KENNY		70210	\$41975.0000	RESIGNED	NO	12/24/10
MORENO	MARIO	V	70235	\$79763.0000	PROMOTED	NO	12/23/10
MORRISEY	FRANCIS	G	70260	\$102091.0000	PROMOTED	NO	12/23/10
MOSCA	ROBERT	M	70235	\$79763.0000	PROMOTED	NO	12/23/10
MULLANE	ROBERT		7026E	\$156223.0000	RETIRED	NO	12/28/10
MUNIZ	HERIBERT		7021A	\$81120.0000	RETIRED	NO	12/21/10
NERO	GIUSEPPE	J	70235	\$79763.0000	PROMOTED	NO	12/23/10
O HARE	ROBERT	W	70260	\$102091.0000	PROMOTED	NO	12/23/10
ORECCHIA	JOHN	A	70235	\$79763.0000	PROMOTED	NO	12/23/10
PAHOLEK	EDWARD	S	70235	\$79763.0000	PROMOTED	NO	12/23/10
PANAKOS	CALLE		70210	\$41975.0000	RESIGNED	NO	12/25/10
PASSOLO	THOMAS		70260	\$102091.0000	PROMOTED	NO	12/23/10
PEELE-FAIR	DIANE		71012	\$32710.0000	RESIGNED	NO	11/18/10
PILECKI	MICHAEL	W	7026E	\$156223.0000	PROMOTED	NO	12/23/10
RAMOS-CORA	AVIAN	V	7021A	\$83921.0000	RETIRED	NO	12/25/10
RAMSEY	KEYION	S	70235	\$79763.0000	PROMOTED	NO	12/23/10
REYNOSO	OSCAR		70210	\$41975.0000	RESIGNED	NO	12/24/10
RODRIGUEZ	ARIEL	D	70210	\$41975.0000	RESIGNED	NO	12/21/10
RODRIGUEZ	ARIEL	R	70210	\$41975.0000	RESIGNED	NO	12/21/10
RODRIGUEZ	OSCAR	G	71651	\$36389.0000	RETIRED	NO	12/30/10
ROMANO	SALVATOR	A	7023B	\$100054.0000	PROMOTED	NO	12/23/10
ROSALES	MAURICIO		70210	\$76488.0000	RETIRED	NO	12/29/10
ROSENBERG	CHAD	L	70235	\$79763.0000	PROMOTED	NO	12/23/10
ROSSO	DAVID	M	70235	\$79763.0000	PROMOTED	NO	12/23/10
SALERNO	VINCENT	G	7026D	\$148365.0000	PROMOTED	NO	12/23/10
SAVINO	ANDREW		7026D	\$148365.0000	PROMOTED	NO	12/23/10
SCHINDLAR	CURT	J	70235	\$79763.0000	PROMOTED	NO	12/23/10
SCHOLL	CHRISTOP	C	70235	\$79763.0000	PROMOTED	NO	12/23/10
SHARIF	FURQAN		7165A	\$42751.0000	RETIRED	NO	12/23/10
SHEA	KEVIN	P	70235	\$79763.0000	PROMOTED	NO	12/23/10
SMITH	ANGELA		70210	\$76488.0000	RETIRED	NO	12/23/10
SMITH JR.	THOMAS	P	70235	\$79763.0000	PROMOTED	NO	12/23/10
SOHAN	KURINNE	M	70235	\$79763.0000	PROMOTED	NO	12/23/10
STARRANTINO	MATTHEW	S	70235	\$79763.0000	PROMOTED	NO	12/23/10
STEPHENS	THOMAS	J	70235	\$79763.0000	PROMOTED	NO	12/23/10
SUERO	HECTOR	A	70235	\$79763.0000	PROMOTED	NO	12/23/10
SUMMA	SHEREEN	M	70235	\$79763.0000	PROMOTED	NO	12/23/10
SWEET	KERRY	R	7026E	\$156223.0000	PROMOTED	NO	12/23/10
THAENS	WILLIAM	C	70260	\$102091.0000	PROMOTED	NO	12/23/10
THOMAS	ANTONIO	J	70210	\$76488.0000	RETIRED	NO	12/27/10
TOMPKINS	JOSEPH	G	70235	\$79763.0000	PROMOTED	NO	12/23/10
TORRES	ADAM	R	70235	\$79763.0000	PROMOTED	NO	12/23/10
TOWLES	TERESA	E	71012	\$41420.0000	DISMISSED	NO	12/22/10
TULLEY	CHRISTIN		70210	\$41975.0000	RESIGNED	NO	12/21/10
VACARR	MICHAEL		70235	\$79763.0000	PROMOTED	NO	12/23/10
VALERGA	PAUL	A	70260	\$102091.0000	PROMOTED	NO	12/23/10
VAUGHN	RASHAWN	A	70235	\$79763.0000	PROMOTED	NO	12/23/10
VELEZ	CRYSTAL	T	70235	\$79763.0000	PROMOTED	NO	12/23/10
VELEZ	DAVID		70235	\$79763.0000	PROMOTED	NO	12/23/10
VERDEROSA	JOSEPH		70235	\$79763.0000	PROMOTED	NO	12/23/10
WALDEN	SHAWNIAE	D	70210	\$41975.0000	RESIGNED	NO	12/24/10
WEINSTEIN	STACEY	B	70210	\$41975.0000	RESIGNED	NO	12/24/10
WILLIS	CHRISTOP	J	70260	\$102091.0000	PROMOTED	NO	12/23/10

FIRE DEPARTMENT											
FOR PERIOD ENDING 01/07/11											
NAME		TITLE		SALARY		ACTION		PROV		EFF DATE	
		NUM									
ALEXANDER	ROBERT	W	70316</								

FEBRUARY 8, 2011, 1:30 P.M.

NOTICE IS HEREBY GIVEN of a public hearing, Tuesday afternoon, February 8, 2011, at 1:30 P.M., at 40 Rector Street, 6th Floor, New York, N.Y. 10006, on the following matters:

118-10-BZ
APPLICANT - Eric Palatnik, P.C., for Arkadv Nabatov, owner.
SUBJECT - Application June 28, 2010 - Reinstatement (§11-411 & §11-413) of an approval permitting the operation of an automotive service station (UG 16B), with accessory uses, which expired on December 9, 2003. Amendment to legalize a change in use from automotive service station to automotive repair, auto sales and hand car washing. R4 zoning district.
PREMISES AFFECTED - 2102/24 Avenue Z, aka 2609/15 East 21st Street, Block 7441, Lot 371, Borough of Brooklyn.
COMMUNITY BOARD #15BK

192-10-BZ
APPLICANT - Vincent L. Petraro, PLLC, for The Leavitt Street LLC, owner.
SUBJECT - Application October 20, 2010 - Special Permit (§73-66) to allow for a waiver of height restrictions around airports. C4-2 zoning district.
PREMISES AFFECTED - 39-16 College Point Boulevard, west side of College Point Boulevard, at the cross section of Roosevelt Avenue and College Point Boulevard, Block 462, Lot 4, Borough of Queens.
COMMUNITY BOARD #7Q

193-10-BZ
APPLICANT - Vincent L. Petraro, PLLC, for Jia Ye Realty, LLC, owner.
SUBJECT - Application October 20, 2010 - Special Permit, ZR 73-66, to allow for a waiver of height restrictions around airports. C4-3 zoning district.
PREMISES AFFECTED - 35-27 Prince Street, at the congruence of 36th Road and Prince Street, Block 4971, Lot 8, Borough of Queens.
COMMUNITY BOARD #7Q

Jeff Mulligan, Executive Director

j31-fl

FEBRUARY 15, 2011, 10:00 A.M.

NOTICE IS HEREBY GIVEN of a public hearing, Tuesday morning, February 15, 2011, 10:00 A.M., at 40 Rector Street, 6th Floor, New York, N.Y. 10006, on the following matters:

SPECIAL ORDER CALENDAR

703-80-BZ
APPLICANT - Joseph P. Morsellino, for Louis N. Petrosino, owner.
SUBJECT - Application July 1, 2010 - Extension of Term of a previously granted Variance (§72-21) for the continued operation of an existing scrap metal storage establishment which expires on December 2, 2010 and an Amendment to Legalize the existing enclosure of an open storage area. C8-1 zoning district.
PREMISES AFFECTED - 2994/3018 Cropsey Avenue, southwest corner of Bay 54th Street, Block 6947, Lot 260, Borough of Brooklyn.
COMMUNITY BOARD #13BK

172-99-BZ
APPLICANT - The Law Office of Fredrick A. Becker, for Samson Associates LLC, owner; TSI West 14 LLC d/b/a New York Sports Club, lessee.
SUBJECT - Application November 10, 2010 - Extension of Term of a previously granted Special Permit (§73-36) for the continued operation of a Physical Culture Establishment (New York Sports Club) which expired on August 13, 2009; Waiver of the Rules of Practice and Procedure. C6-2M/C6-2 zoning district.
PREMISES AFFECTED - 34-42 West 14th Street, south side of West 14th Street, between Fifth Avenue and Sixth Avenue, Block 577, Lot 19, Borough of Manhattan.
COMMUNITY BOARD #2M

289-00-BZ
APPLICANT - The Law Office of Fredrick A. Becker, for 160 Water Street Associates, owner; TSI Water Street LLC d/b/a New York Sports Club, lessee.

SUBJECT - Application October 29, 2010 - Extension of Term of a previously approved Special Permit (§73-36) for the continued operation of a Physical Cultural Establishment (New York Sports Club) which expires on March 6, 2011.
C5-5 (LM) zoning district.
PREMISES AFFECTED - 160 Water Street, northwest corner of Water Street and Fletcher Street, Block 70, Lot 43, Borough of Manhattan.
COMMUNITY BOARD #1M

122-06-BZ
APPLICANT - Sheldon Lobel, P.C., for Revlation Development Incorporated, owner.
Bensonhurst MRI, P.C., lessee.
SUBJECT - Application January 26, 2011 - Extension of Time to Complete Construction of a previously granted Variance (§72-21) for the enlargement of an existing medical office building and the construction of residences which expired on February 6, 2011. R5 and C2-3/R5 zoning district.
PREMISES AFFECTED - 2671 86th Street, West 11th and West 12th Streets, Block 7115, Lot 27, Borough of Brooklyn.
COMMUNITY BOARD #15BK

APPEALS CALENDAR

220-10-BZY
APPLICANT - D.A.B. Group, LLC, for D.A.B. Group, LLC, owner.
SUBJECT - Application-Extension of time (§11-332) to complete construction of a minor development commenced under the prior C6-1 Zoning District. C4-4A Zoning District.
PREMISES AFFECTED - 77, 79, 81 Rivington Street, aka 139, 141 Orchard Street, northern portion of block bound by Orchard Street, to the east Rivington to the north, Allen Street to the west and Delancy street to the south, Block 415, Lot 61, 62, 63, 66, 67, Borough of Manhattan.
COMMUNITY BOARD #3M

FEBRUARY 15, 2011, 1:30 P.M.

NOTICE IS HEREBY GIVEN of a public hearing, Tuesday afternoon, February 15, 2011, at 1:30 P.M., at 40 Rector Street, 6th Floor, New York, N.Y. 10006, on the following matters:

218-10-BZ
APPLICANT - Simons & Wright LLC, for Bermuda Realty LLC, owner.
SUBJECT - Application November 19, 2010 - Special Permit (§73-19) to permit the operation of a four-story charter school (Brownsville Ascend Charter School) located within a C8-2 zoning district.
PREMISES AFFECTED - 123 East 98th Street, aka 1 Blake Avenue, corner of the intersection of East 98th and Blake Avenue between Ralph Avenue and Union Street, Block 3531, Lot 1, Borough of Brooklyn.
COMMUNITY BOARD #18BK

226-10-BZ
APPLICANT - Rothkrug Rothkrug & Spector LLP, for Montbatten Equities, LLP, owner; Equinox Fitness, lessee.
SUBJECT - Application December 10, 2010 - Special Permit (73-36) to allow a PCE (Equinox Fitness) on the first, ninth and tenth floors in an existing ten-story mixed-use building. M1-5 zoning district.
PREMISES AFFECTED - 405/42 Hudson Street, southwest corner of Hudson and Leroy Streets, Block 601, Lot 58, Borough of Manhattan.
COMMUNITY BOARD #2M

234-10-BZ
APPLICANT - Moshe M. Friedman, for Labe Twerski, owner.
SUBJECT - Application December 28, 2010 - Special Permit (§73-622) for the enlargement of an existing single family home contrary to floor area and open space (ZR §23-141(a)) and less than the required rear yard (ZR §23-47). R-2 zoning district.
PREMISES AFFECTED - 2115 Avenue K, north side, 100' east of intersection of Avenue K and East 21st Street, Block 7603, Lot 3, Borough of Brooklyn.
COMMUNITY BOARD #14BK

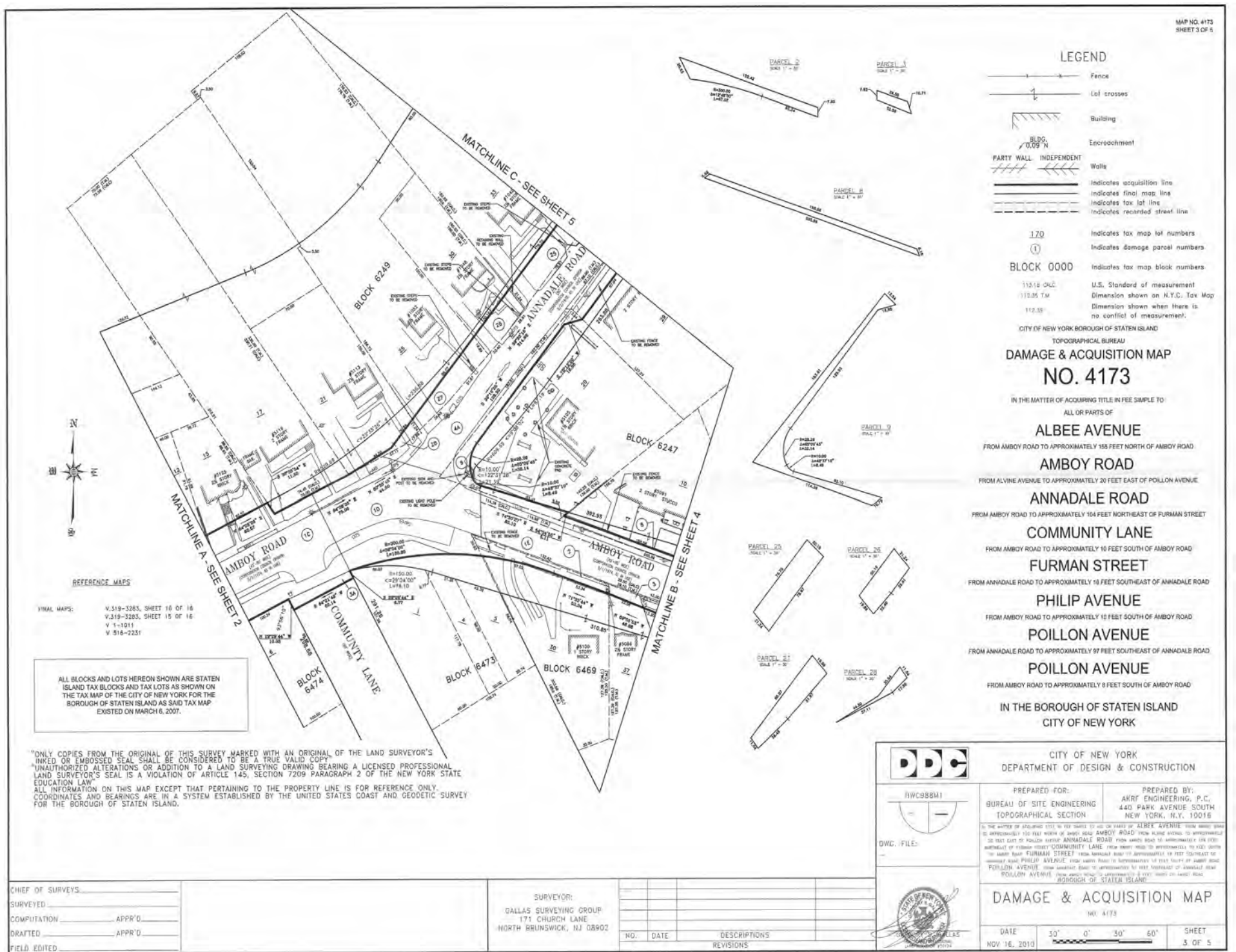
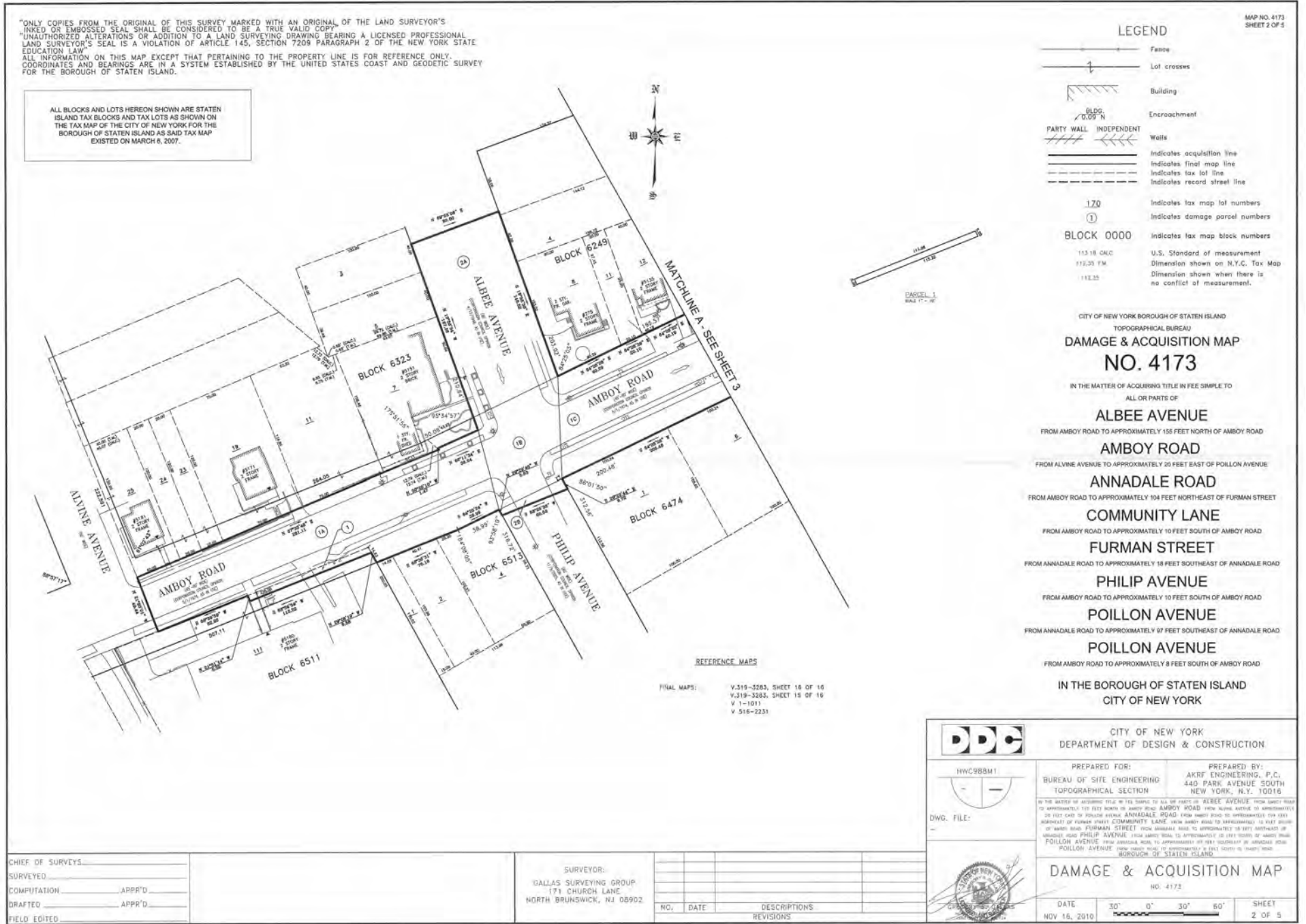
Jeff Mulligan, Executive Director

j31-fl

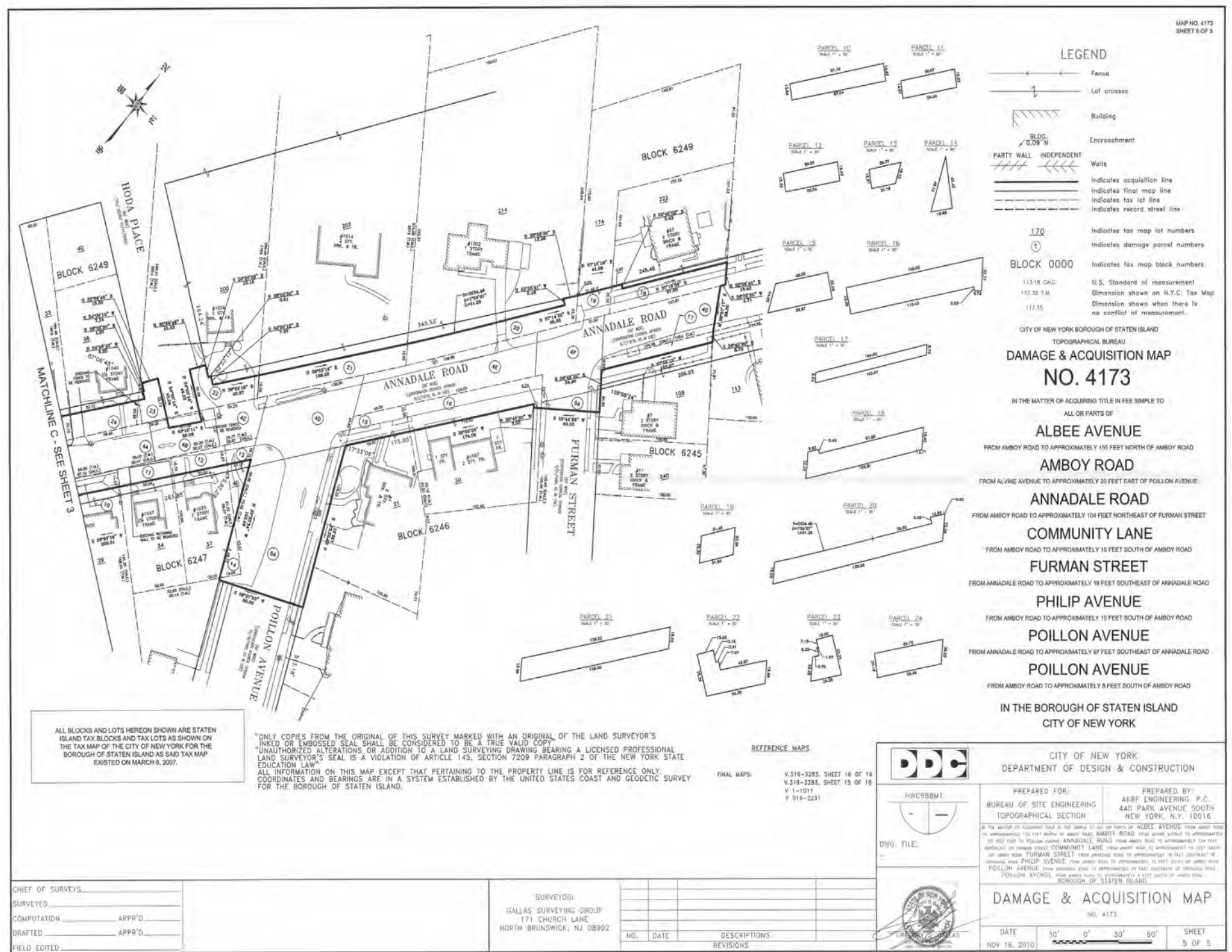
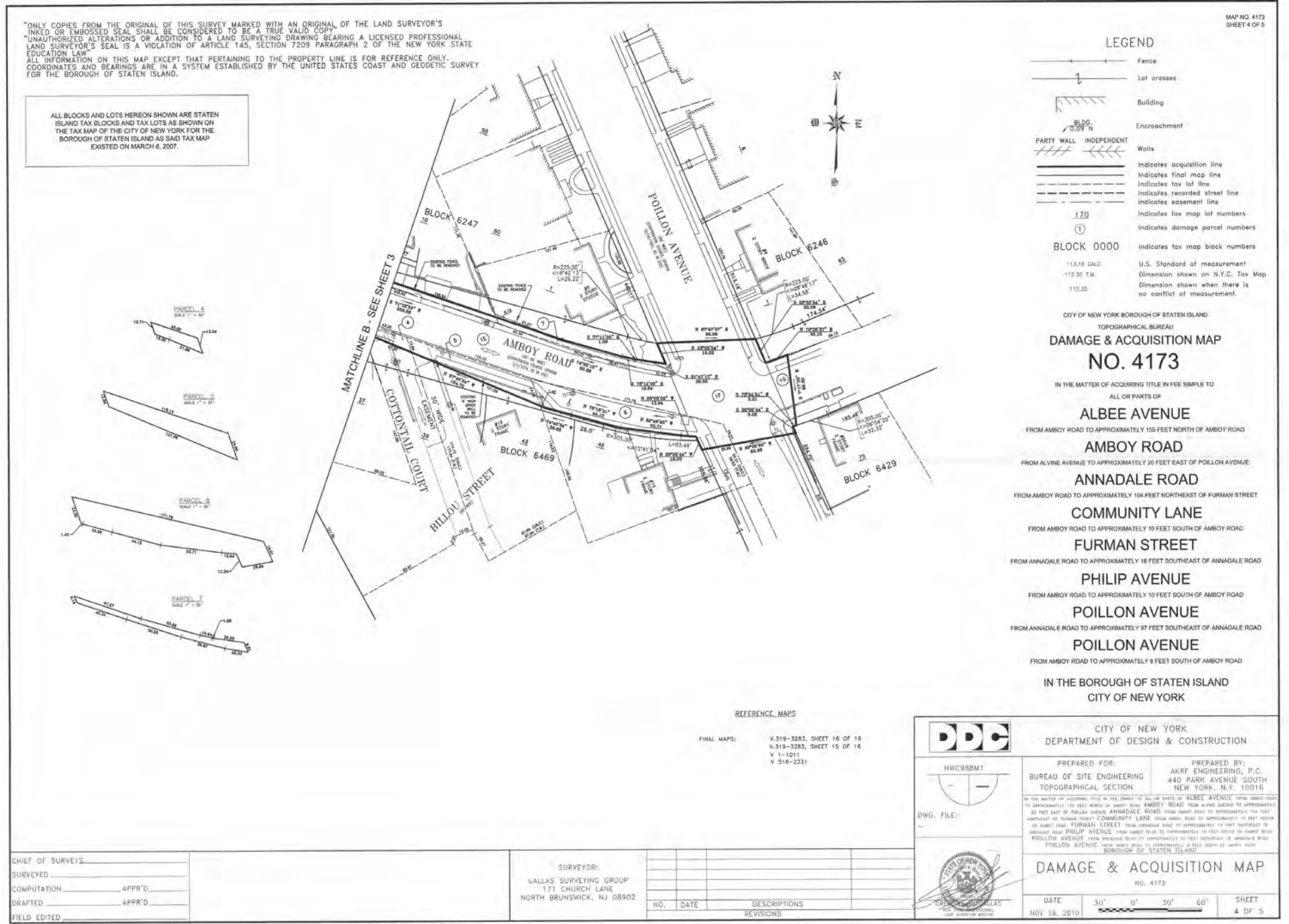
COURT NOTICE MAPS FOR RICHMOND COUNTY DAMAGE AND ACQUISITION NO. 4173

Map showing assessed valuations table, key map, and acquisition map details for Albee Avenue, Amboy Road, Annadale Road, Community Lane, Furman Street, Philip Avenue, Poillon Avenue, and Poillon Avenue in the Borough of Staten Island, City of New York.

COURT NOTICE MAPS FOR RICHMOND COUNTY DAMAGE AND ACQUISITION NO. 4173



COURT NOTICE MAPS FOR RICHMOND COUNTY DAMAGE AND ACQUISITION NO. 4173



READER'S GUIDE

The City Record (CR) is, published each business day and includes notices of proposed New York City procurement actions, contract awards, and other procurement-related information. Solicitation notices for most procurements valued at or above \$100,000 for information technology and for construction and construction related services, above \$50,000 for other services, and above \$25,000 for other goods are published for at least one day. Other types of procurements, such as sole source, require notice in the City Record for five consecutive days. Unless otherwise specified, the agencies and offices listed are open for business Mondays thru Fridays from 9:00 A.M. to 5:00 P.M. except legal holidays.

NOTICE TO ALL NEW YORK CITY CONTRACTORS

The New York State Constitution ensures that all laborers, workers or mechanics employed by a contractor or subcontractor doing public work are to be paid the same wage rate that prevails in the trade where the public work is being done. Additionally, New York State Labor Law §§ 220 and 230 provide that a contractor or subcontractor doing public work in construction or building service must pay its employees no less than the prevailing wage. Section 6-109 (the Living Wage Law) of the New York City Administrative Code also provides for a "living wage", as well as prevailing wage, to be paid to workers employed by City contractors in certain occupations. The Comptroller of the City of New York is mandated to enforce prevailing wage. Contact the NYC Comptrollers Office at www.comptroller.nyc.gov, click on Labor Law Schedules to view rates.

New York City's "Burma Law" (Local Law No. 33 of 1997) No Longer to be Enforced. In light of the United States Supreme Court's decision in **Crosby v. National Foreign Trade Council**, 530 U.S. 363 (2000), the City has determined that New York City's Local Law No. 33 of 1997 (codified in Administrative Code Section 6-115 and Charter Section 1524), which restricts City business with banks and companies doing business in Burma, is unconstitutional. This is to advise, therefore, that the language relating to Burma contained in existing New York City contracts may not be enforced.

CONSTRUCTION/CONSTRUCTION SERVICES OR CONSTRUCTION RELATED SERVICES

The City of New York is committed to achieving excellence in the design and construction of its capital program, and building on the tradition of innovation in architecture and engineering that has contributed to the City's prestige as a global destination.

VENDOR ENROLLMENT APPLICATION

New York City procures approximately \$7 billion worth of goods, services, construction and construction-related services every year. The NYC Procurement Policy Board Rules require that agencies primarily solicit from established mailing lists called bidder/proposer lists. To register for these lists-free of charge-, prospective suppliers should fill out and submit the NYC-FMS Vendor Enrollment application.

- Online at <http://nyc.gov/selltonyc>

- To request a hardcopy application, call the Vendor Enrollment Center at (212) 857-1680.

Attention Existing Suppliers:

Even if you already do business with NYC agencies, be sure to fill out an application. We are switching over to citywide, centralized Bidders Lists instead of the agency-specific lists previously used to issue notices about upcoming contract opportunities. To continue receiving notices of New York City contract opportunities, you must fill out and submit a NYC-FMS Vendor Enrollment application.

If you are uncertain whether you have already submitted an application, call us at (212) 857-1680.

SELLING TO GOVERNMENT TRAINING WORKSHOP

New and experienced vendors are encouraged to register for a free training course on how to do business with New York City. "Selling to Government" workshops are conducted by the Department of Small Business Services, 110 William Street, New York, NY 10038. Morning and afternoon sessions are convened on the first Tuesday of each month. For more information, and to register, call (212) 618-8845.

PRE-QUALIFIED LIST

New York City procurement policy permits agencies to develop and solicit from pre-qualified lists of vendors, under prescribed circumstance. When it is decided by an agency to develop a pre-qualified list, criteria for pre-qualification must be clearly explained in the solicitation and notice of the opportunity to pre-qualify for that solicitation must be published in at least five issues of the CR.

Information and qualification questionnaires for inclusion on such list may be obtained directly from the Agency Chief Contracting Officer at each agency, (see Vendor Information Manual). A completed qualification Questionnaire may be submitted to the Chief Contracting Officer at any time, unless otherwise indicated and action (approval or denial) shall be taken by the agency within 90 days from the date of submission. Any denial or revocation of pre-qualified status can be appealed to the Office of Administrative Trials and Hearings, (OATH), Section 3-11 of the Procurement Policy Board Rules describes the criteria for the general use of pre-qualified lists.

NON-MAYORAL ENTITIES

The following agencies are not subject to Procurement Policy Board rules and do not follow all of the above procedures: City University, Department of Education, Metropolitan Transportation Authority, Health & Hospitals Corporation, Housing Authority. Suppliers interested in applying for inclusion on bidders list should contact these entities directly (see Vendor Information Manual) at the addresses given.

PUBLIC ACCESS CENTER

The Public Access Center is available to suppliers and the public as a central source for supplier-related information through on-line computer access. The Center is located at 253 Broadway, 9th floor, in lower Manhattan, and is open Monday through Friday from 10:00 A.M to 3:00 P.M. For information, contact the Mayor's Office of Contract Services at (212) 788-0010.

ATTENTION: NEW YORK CITY MINORITY AND WOMEN OWNED BUSINESS ENTERPRISES

Join the growing number of Minority and Women Owned Business Enterprises (M/WBEs) that are competing for New York City's business. In order to become certified for the program, your company must substantiate that it: (1) is at least fifty-one percent (51%) owned, operated and controlled by a minority or woman and (2) is either located in New York City or has a significant tie to New York City's business community. To obtain a copy of the certification application and to learn more about the program, contact the New York City Department of Small Business Services, 110 William Street, 2nd Floor, New York, New York 10038 (212) 513-6311.

PROMPT PAYMENT

It is the policy of the City of New York to pay its bills promptly. The Procurement Policy Board Rules generally require that the City pay its bills within 30 days after the receipt of a proper invoice. The City now pays interest on all late invoices. The grace period that formerly existed was eliminated on July 1, 2000. However, there are certain types of payments that are not eligible for interest. These are listed in Section 4-06 of the Procurement Policy Board Rules. The Comptroller and OMB determine the interest rate on late payments twice a year, in January and in July.

PROCUREMENT POLICY BOARD RULES

The Rules may also be accessed on the City Website, <http://nyc.gov/selltonyc>

COMMON ABBREVIATIONS USED IN THE CR

The CR contains many abbreviations. Listed below are simple explanations of some of the most common ones appearing in the CR:

- AB Acceptable Brands List
- AC Accelerated Procurement
- AMT Amount of Contract
- BL Bidders List
- CSB Competitive Sealed Bidding (including multi-step)
- CB/PQ CB from Pre-qualified Vendor List
- CP Competitive Sealed Proposal (including multi-step)
- CP/PQ CP from Pre-qualified Vendor List
- CR The City Record newspaper
- DA Date bid/proposal documents available
- DUE Bid/Proposal due date; bid opening date
- EM Emergency Procurement
- IG Intergovernmental Purchasing
- LBE Locally Based Business Enterprise
- M/WBE Minority/Women's Business Enterprise
- NA Negotiated Acquisition
- NOTICE....Date Intent to Negotiate Notice was published in CR
- OLB.....Award to Other Than Lowest Responsible & Responsive Bidder/Proposer
- PIN.....Procurement Identification Number
- PPB Procurement Policy Board
- PQ Pre-qualified Vendors List
- RS.....Source required by state/federal law or grant
- SCE Service Contract Short-Term Extension
- DP Demonstration Project
- SS Sole Source Procurement
- ST/FED Subject to State &/or Federal requirements

KEY TO METHODS OF SOURCE SELECTION

The Procurement Policy Board (PPB) of the City of New York has by rule defined the appropriate methods of source selection for City procurement and reasons justifying their use. The CR procurement notices of many agencies include an abbreviated reference to the source selection method utilized. The following is a list of those methods and the abbreviations used:

- CSB **Competitive Sealed Bidding** (including multi-step)
Special Case Solicitations / Summary of Circumstances:
- CP **Competitive Sealed Proposal** (including multi-step)
- CP/1 Specifications not sufficiently definite
- CP/2 Judgement required in best interest of City
- CP/3 Testing required to evaluate
- CB/PQ/4
- CP/PQ/4 **CB or CP from Pre-qualified Vendor List/** Advance qualification screening needed
- DP Demonstration Project
- SS **Sole Source Procurement/**only one source
- RS.....Procurement from a Required Source/ST/FED
- NA.....Negotiated Acquisition
For ongoing construction project only:
- NA/8 Compelling programmatic needs

- NA/9New contractor needed for changed/additional work
- NA/10.....Change in scope, essential to solicit one or limited number of contractors
- NA/11.....Immediate successor contractor required due to termination/default
For Legal services only:
- NA/12.....Specialized legal devices needed; CP not advantageous
- WA **Solicitation Based on Waiver/Summary of Circumstances** (Client Services/BSB or CP only)
- WA1Prevent loss of sudden outside funding
- WA2Existing contractor unavailable/immediate need
- WA3Unsuccessful efforts to contract/need continues
- IG **Intergovernmental Purchasing** (award only)
- IG/F.....Federal
- IG/S.....State
- IG/OOther
- EM **Emergency Procurement** (award only) An unforeseen danger to:
- EM/A.....Life
- EM/B.....Safety
- EM/C.....Property
- EM/D.....A necessary service
- AC **Accelerated Procurement/**markets with significant short-term price fluctuations
- SCE **Service Contract Extension/**insufficient time; necessary service; fair price
Award to Other Than Lowest Responsible & Responsive Bidder or Proposer / Reason (award only)
- OLB/a.....anti-apartheid preference
- OLB/b.....local vendor preference
- OLB/crecycled preference
- OLB/d.....other: (specify)

HOW TO READ CR PROCUREMENT NOTICES

Procurement Notices in the CR are arranged by alphabetically listed Agencies, and within Agency, by Division if any. The notices for each Agency (or Division) are further divided into three subsections: Solicitations, Awards; and Lists & Miscellaneous notices. Each of these subsections separately lists notices pertaining to Goods, Services, or Construction.

Notices of Public Hearings on Contract Awards appear at the end of the Procurement Section. At the end of each Agency (or Division) listing is a paragraph giving the specific address to contact to secure, examine and/or to submit bid or proposal documents, forms, plans, specifications, and other information, as well as where bids will be publicly opened and read. This address should be used for the purpose specified UNLESS a different one is given in the individual notice. In that event, the directions in the individual notice should be followed. The following is a SAMPLE notice and an explanation of the notice format used by the CR.

SAMPLE NOTICE:

POLICE

DEPARTMENT OF YOUTH SERVICES

■ SOLICITATIONS

Services (Other Than Human Services)

BUS SERVICES FOR CITY YOUTH PROGRAM – Competitive Sealed Bids – PIN# 056020000293 – DUE 04-21-03 AT 11:00 A.M.

Use the following address unless otherwise specified in notice, to secure, examine or submit bid/proposal documents, vendor pre-qualification and other forms; specifications/blueprints; other information; and for opening and reading of bids at date and time specified above.
NYPD, Contract Administration Unit, 51 Chambers Street, Room 310, New York, NY 10007. Manuel Cruz (646) 610-5225.

☛ m27-30

ITEM	EXPLANATION
POLICE DEPARTMENT	Name of contracting agency
DEPARTMENT OF YOUTH SERVICES	Name of contracting division
■ SOLICITATIONS	Type of Procurement action
<i>Services (Other Than Human Services)</i>	Category of procurement
BUS SERVICES FOR CITY YOUTH PROGRAM	Short Title
CSB	Method of source selection
PIN # 056020000293	Procurement identification number
DUE 04-21-03 AT 11:00 am	Bid submission due 4-21-03 by 11:00 am; bid opening date/time is the same.
<i>Use the following address unless otherwise specified in notice, to secure, examine-submit bid/proposal documents; etc.</i>	Paragraph at the end of Agency Division listing giving contact information, or submit bid/information or and Agency Contact address
	NYPD, Contract Administration Unit 51 Chambers Street, Room 310 New York, NY 10007. Manuel Cruz (646) 610-5225.
☛	Indicates New Ad
m27-30	Date that notice appears in City Record

NUMBERED NOTES

Numbered Notes are Footnotes. If a Numbered Note is referenced in a notice, the note so referenced must be read as part of the notice. **1.** All bid deposits must be by company certified check or money order made payable to Agency or Company.