

70 Mulberry Street 茂比利街70號

Design Engagement Workshop 設計參與研討會

70 Mulberry Street Advisory Committee, the Department of Citywide Administration Services (DCAS), the Department of Design and Construction (DDC), and Grimshaw, the project's design consultant, invite the community to participate in a design engagement workshop. Today's workshop will center around the design development of proposed community spaces within the 70 Mulberry Street building.

70號茂比利街諮詢委員會、市行政管理局(DCAS)、市建設局 (DDC)聯同該項目設計顧問 Grimshaw建築師事務所誠邀大家參與70號茂比利街大樓內社區空間的設計而開展的互動研討會。

Community Engagement 社區參與

September 2020: DCAS
Community visioning process
(by 3X3)
社區願景進程

November 2021: DDC/DCAS
brief and budget to rebuild 70
Mulberry. DDC/DCAS
重建茂比利街70號大樓的概要和
預算

August 2022: Grimshaw joined
the project Grimshaw
建築師事務所開始規劃

September 2022: Community
Board 3 Meeting
第三社區委員會會議

February 2023:
DCLA's artist selection process
started
市文化局(DCLA)的藝術家甄選
程序開始

March 2023
70 Mulberry Advisory group
meeting
70號茂比利街諮詢委員會

March 2023: Community
Board 3 Meeting
第三社區委員會會議

March 2023:
PDC conceptual presentation
市公共設計委員會(PDC)概念設
計介紹

March 2023:
DCLA charrette and artist
selection
市文化局(DCLA)研討會和藝術家
甄選

April 2023: Design Updates with
the five tenants.
與5位原租戶機構更新設計會議

May 2023:
70 Mulberry Advisory group
meeting
70號茂比利街諮詢委員會

May 2023: Community Board 3
Meeting
第三社區委員會會議

July 2023: PDC preliminary
presentation
市公共設計委員會(PDC)初步設
計介紹

July 2023: Public community
engagement online and
in-person
公眾社區會議



70 Mulberry Street 茂比利街70號

Proposed Design 擬議設計

Originally built as P.S. 23 in the late 1800s, this historic five-story red brick building is home to non-profit community groups and holds significant value in the memories of generations. The proposed design aims to expand the building to seven floors while maintaining the two-story street facades and six-story stair tower facades. This expansion will add 16,500 square feet of community spaces and offices, ensuring improved accessibility and sustainability.

這座歷史悠久的五層紅磚樓最初建於十九世紀末，起名為 P.S. 23。它不僅在數代人的回憶中有著重大意義，也是許多非盈利社區團體的家。此次擬議的設計方案將把大樓擴建成七層，同時保留兩層高的街道立面以及六層高的樓梯塔立面。此次擴建將增加 16,500 平方英尺的社區和辦公室空間，並確保優化大樓的無障礙設施及可持續發展性。

Projected Timeline 預計時間表

Design Phase (Current)

設計

19 十九
months 个月



Construction Procurement

採購建築合同

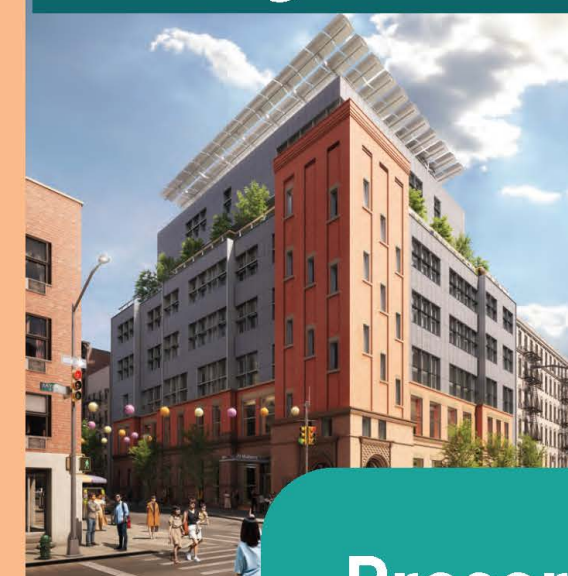
8 八
months 个月



Construction 建築施工

41 四十一
months 个月

Project Scope 項目範圍



Preserve and restore portions of the existing historic facade 保護和修復現有的部分歷史外牆

It is vital to retain the building's identity through what can be saved of the facade. The basis of the design intent is to preserve the remaining two story street facades and the six story stair tower facades. Geotechnical information and Construction Manager's input are required to verify the technical strategy and cost.

通過保護外牆，保留歷史建築的特性是至關重要的。設計意圖的基礎，是保留剩余的兩個街道外牆和樓梯塔樓的外牆。為了核實技術策略和成本，這將需要地質技術信息和施工經理的意見。



Return 51,000 square feet to the previous tenants 將51,000平方英尺的空間歸還 給以前的租戶機構

This undertaking will restore the five resident institutions back to their home. We examined the program requirements, and we are proposing refinements to better serve each organization. The new design will support both individual cultural identity, as well as overlapping interaction between the organizations under one roof.

這項工作將讓五個常駐機構回歸家園。我們研究了方案的要求，並提出了改進建議，以更好地服務於每個機構。新的設計將支持個人文化認同，以及在同一屋檐下組織之間的重疊互動。



Additional 16,500 sf community spaces & offices 新增16,500平方英尺的社區空間 和辦公室

It is vital to retain the building's identity through what can be saved of the facade. The basis of the design intent is to preserve the remaining two story street facades and the six story stair tower facades. Geotechnical information and Construction Manager's input are required to verify the technical strategy and cost.

通過保護外牆，保留歷史建築的特性是至關重要的。設計意圖的基礎，是保留剩余的兩個街道外牆和樓梯塔樓的外牆。為了核實技術策略和成本，這將需要地質技術信息和施工經理的意見。



Accessibility Enhancement & Sustainability 無障礙性&可持續性

The new building will provide three elevators and three egress stairs for code compliance and accessibility. The new building will be built with a focus on sustainability and resiliency to benefit both the environment and the community.

新大樓將提供三部電梯和三個出口樓梯，以確保合規性和無障礙性。新大樓的建造將配備氣候適應的可持續性和彈性，以造福於環境和社區。



Percent for Art 百分比藝術

Artist Selection 入選藝術家

Visual artist Jennifer Wen Ma has been selected to design a permanent, public artwork for 70 Mulberry. NYC Department of Cultural Affairs' Percent for Art program has commissioned Ma to create artwork for the site in collaboration with Grimshaw Architects, the local community, and design agencies.

視覺藝術家馬文 (Jennifer Wen Ma) 被選中為茂比利街 70 號設計一份永久的公眾藝術作品。紐約市文化事務部的 "藝術百分比" 項目已委托馬文與 Grimshaw Architects、本地社區及設計機構們合作，為樓中場地創作。

About the Artist 關於藝術家

Jennifer Wen Ma

馬文



Ma will develop and create an artwork that reflects on the rich past, present and future of the Chinatown community center and the people who work, play, and learn at the historic 70 Mulberry.

"I am thrilled to be selected to make an artwork for the reconstruction of 70 Mulberry Street," said Jennifer Wen Ma. "Having called Chinatown and the Lower East Side home for 24 years, this project is dear and near to my heart. I look forward to developing a work that will reflect the dynamic energy of the neighborhood and the future we envision for our community."

馬文創作的作品將反映華埠社區中心豐富多彩的過去、現在和未來，以及在歷史悠久的茂比利街 70 號工作、游樂和學習的人們。

"我很高興能被選中為重建的茂比利街 70 號創作藝術作品，" 馬文說到，"華埠和下東區在 24 年來一直是我的家，這個項目對我來說極其珍貴。我期待能創作出一件能夠反映社區活力，以及我們對未來的展望的作品。"

Website and Social Media: www.littlemeat.net;
IG: @jenniferwenma
網站及社交媒體: www.littlemeat.net; IG:
@jenniferwenma

Past Projects 往期項目



Percent for Art 藝術百分比

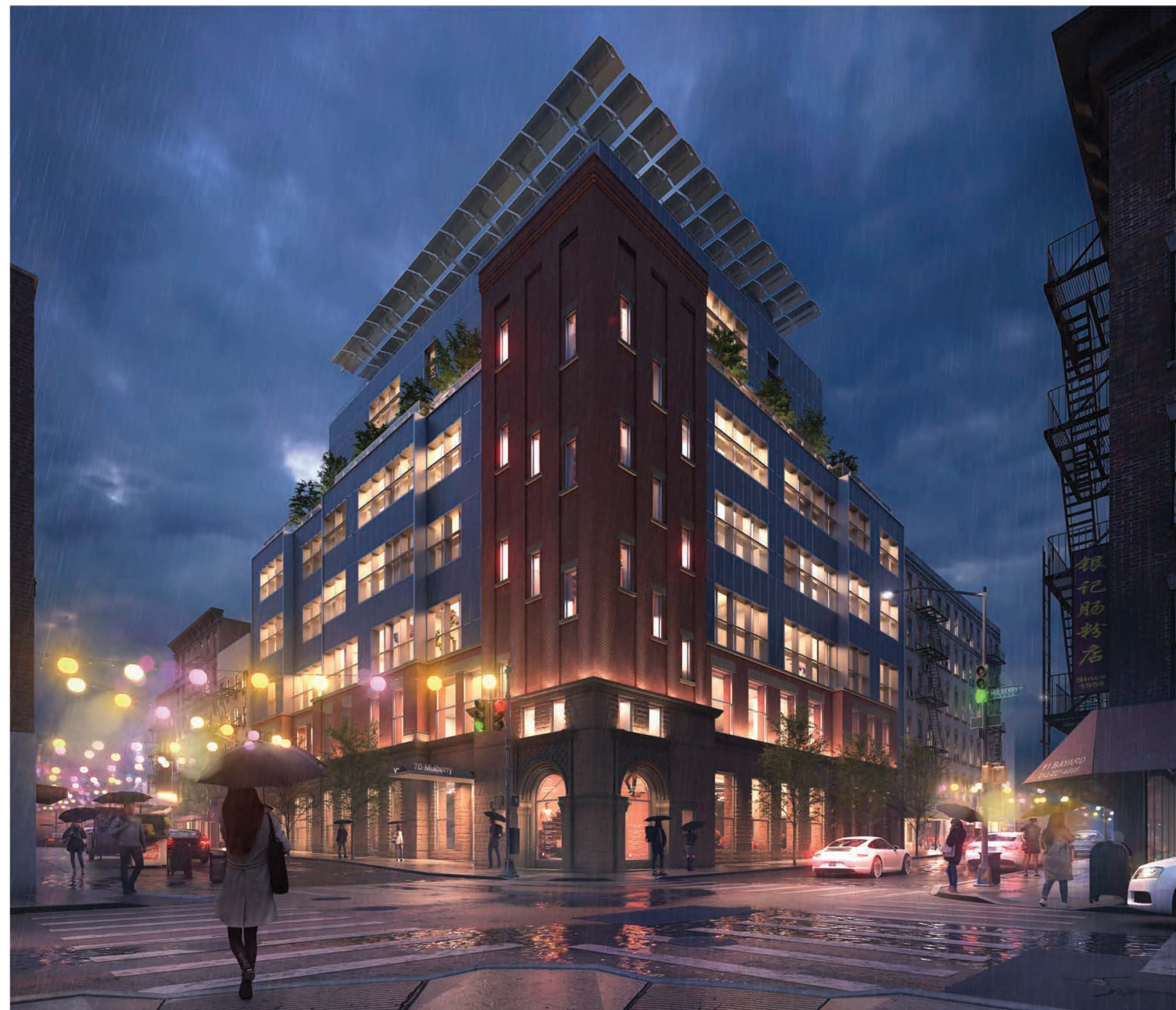
Managed by the New York City's Department of Cultural Affairs, the Percent for Art program offers City agencies the opportunity to acquire, commission, or restore works of art specifically for City-owned buildings throughout the five boroughs.

藝術百分比"項目由紐約市文化事務部管理，為市政府機構提供機會，專門為五個行政區內的市所有建築購買、委托或修復藝術品。

70 Mulberry Street

茂比利街70號

Building View 建築物視圖



VIEWED FROM COLUMBUS PARK – SOUTHWEST CORNER 从哥伦布公园角度看



VIEWED FROM BAYARD STREET –
LOOKING EAST
擺也街往東看

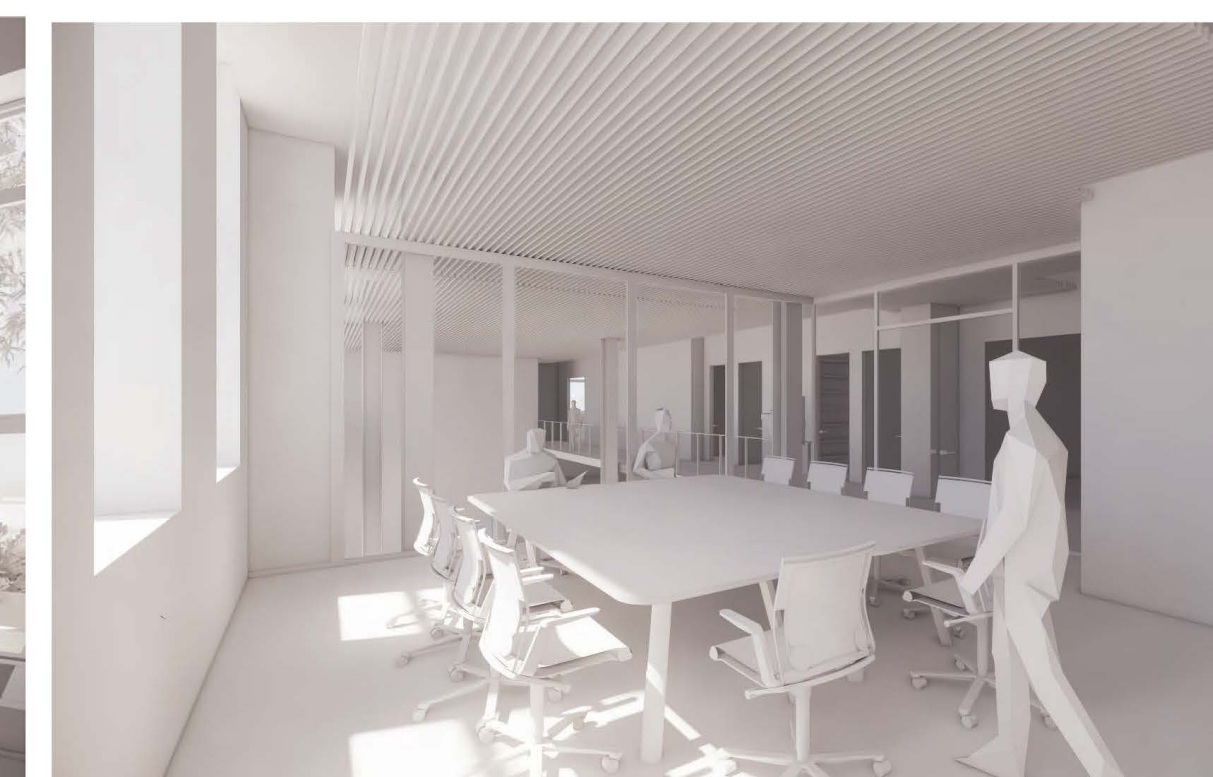


VIEWED FROM COLUMBUS PARK –
SOUTHWEST CORNER
从哥伦布公园角度看

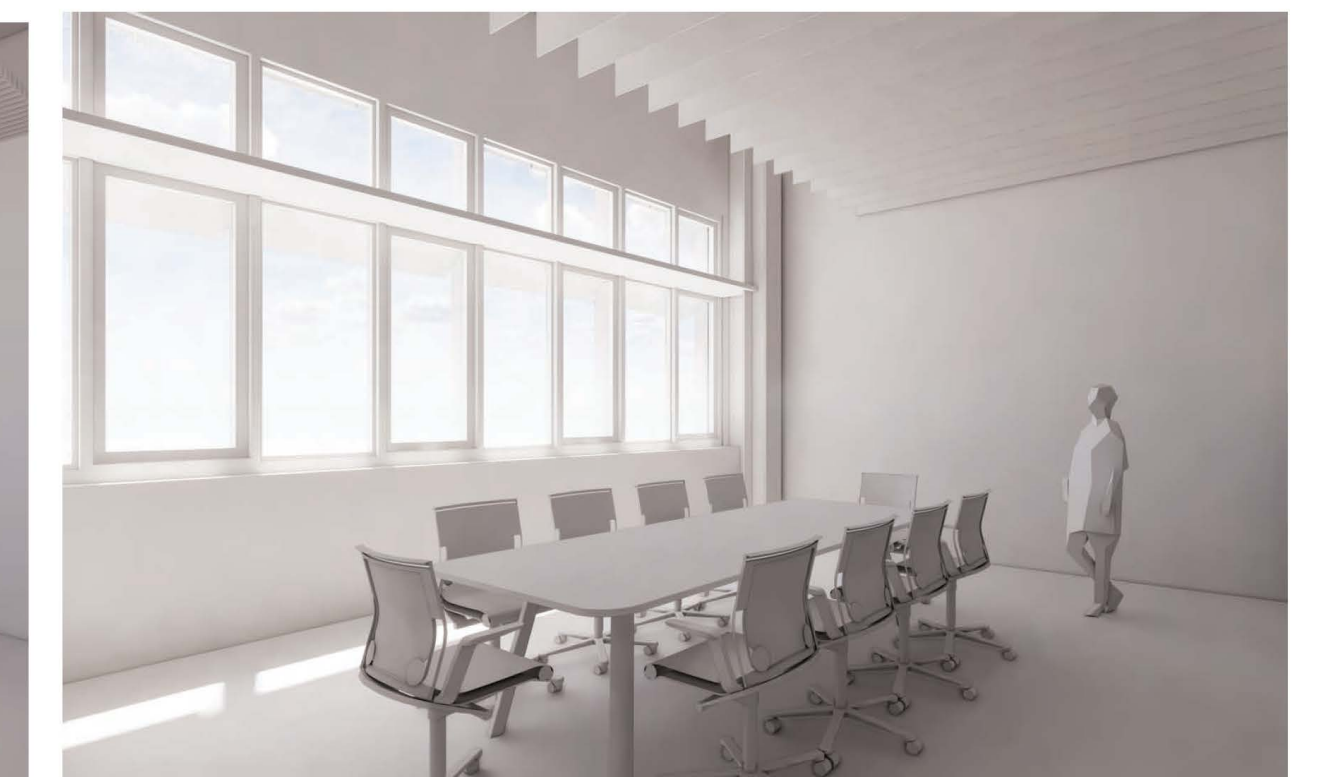
Entrance and Community Spaces 入口及社區空間



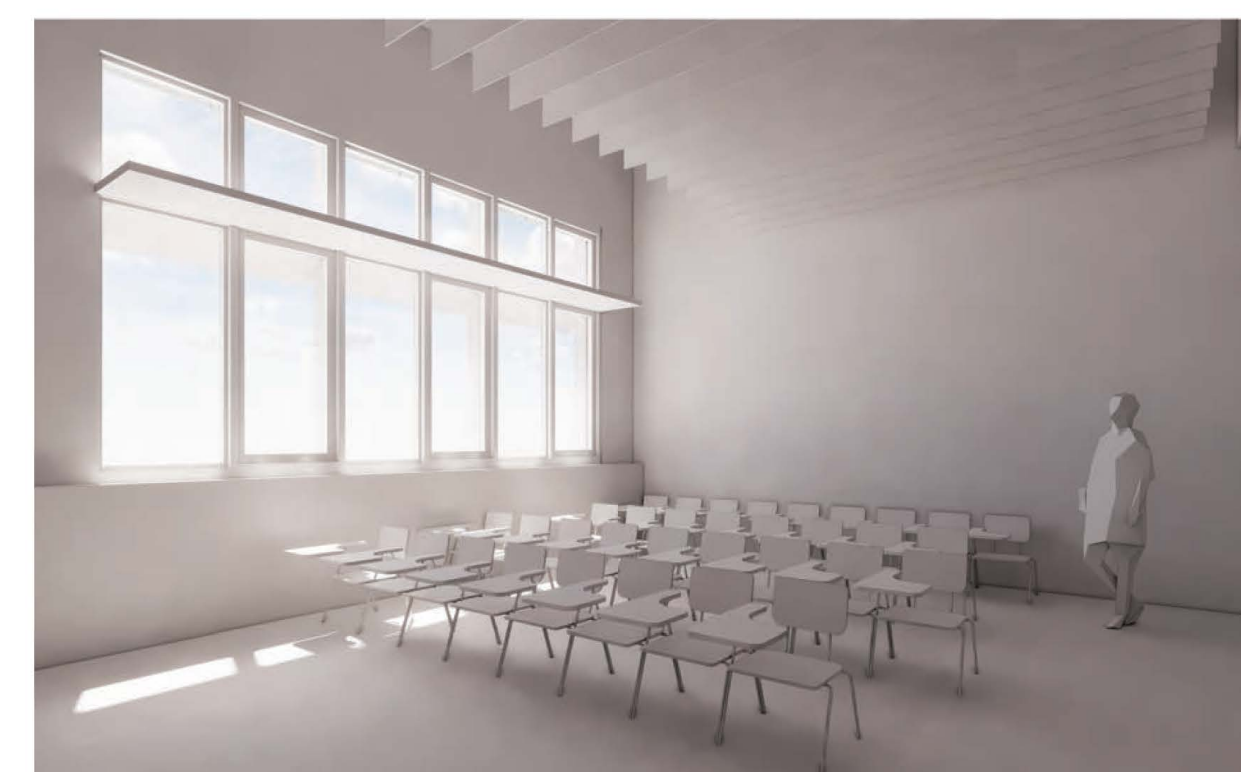
LEVEL 1, LOBBY & COMM RM#1
一層 - 大堂和一號社區活動室



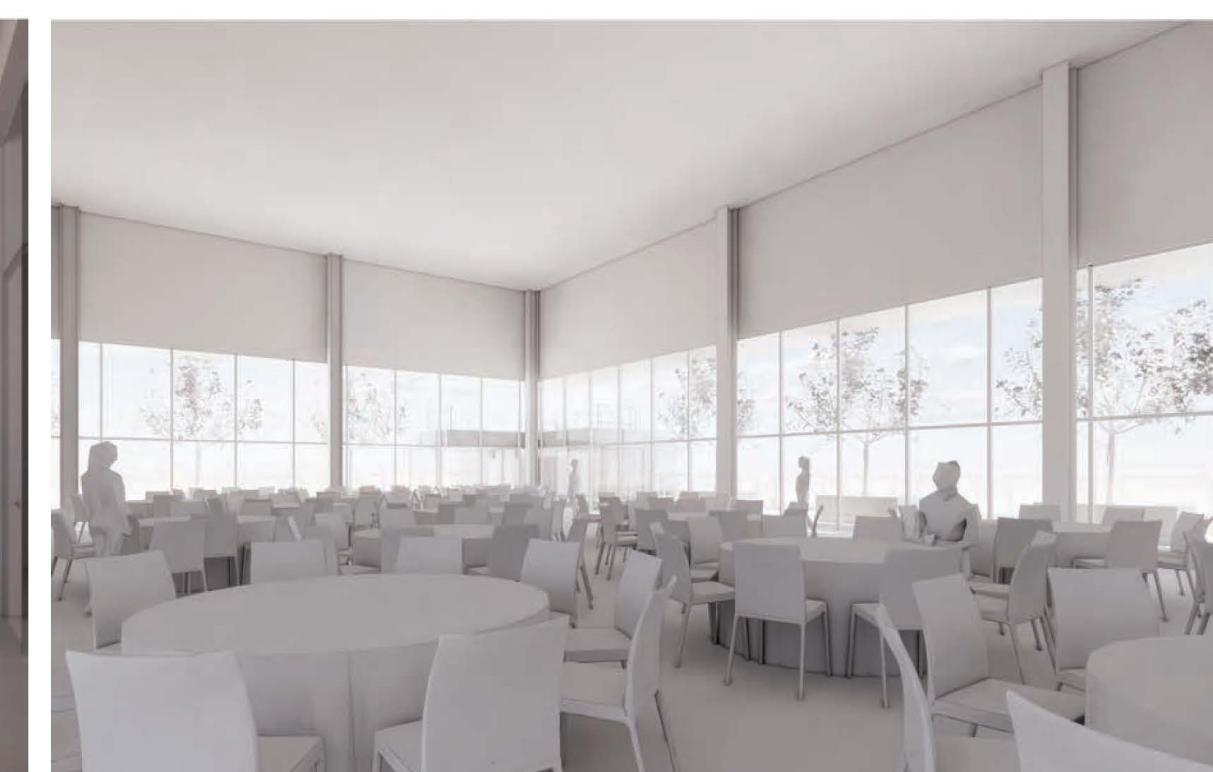
LEVEL 2, COMM RM#2
二層, 社區活動室二號



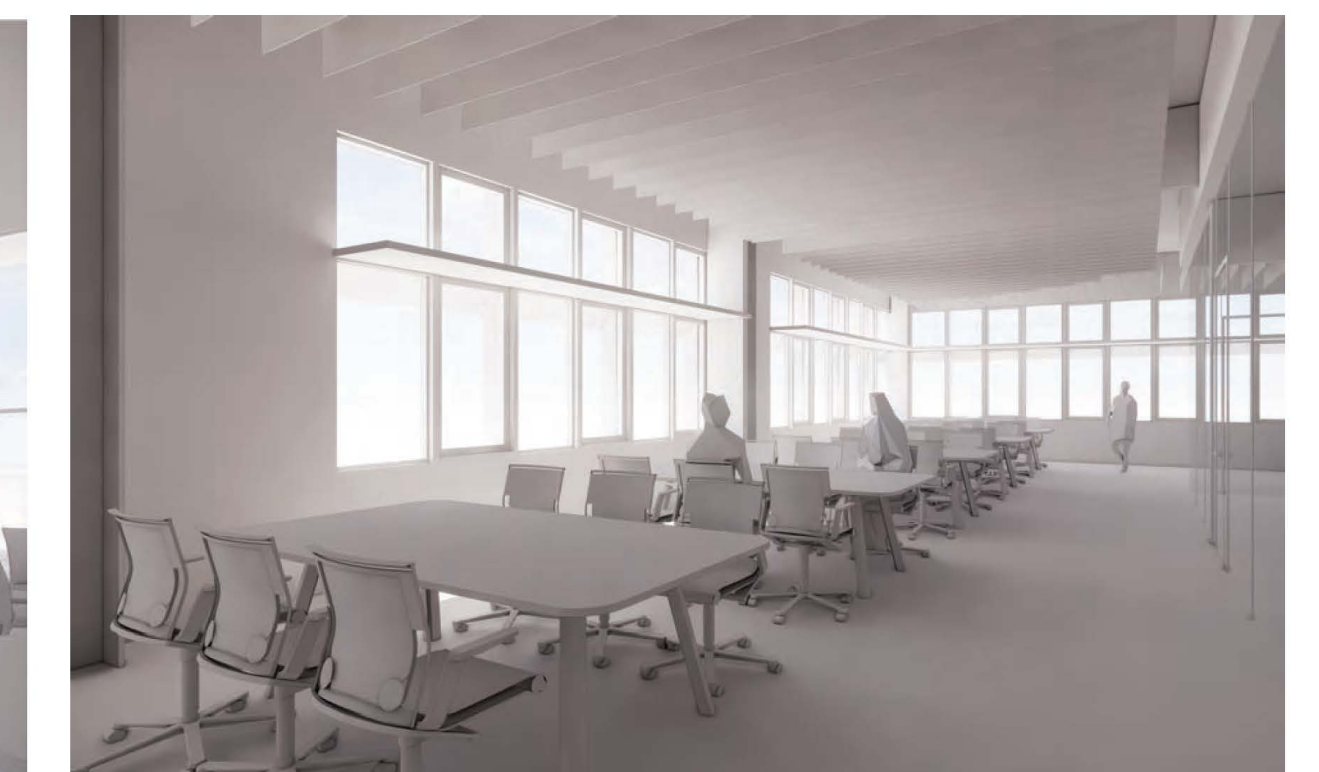
LEVEL 3 ADDT'L OFFICE & SPACE #1
層三 額外辦公室和租戶空間一號



LEVEL 3 ADDT'L OFFICE & SPACE #2
層三 額外辦公室和租戶空間二號



LEVEL 6 MULTIPURPOSE RM
六樓 - 多用途房 體

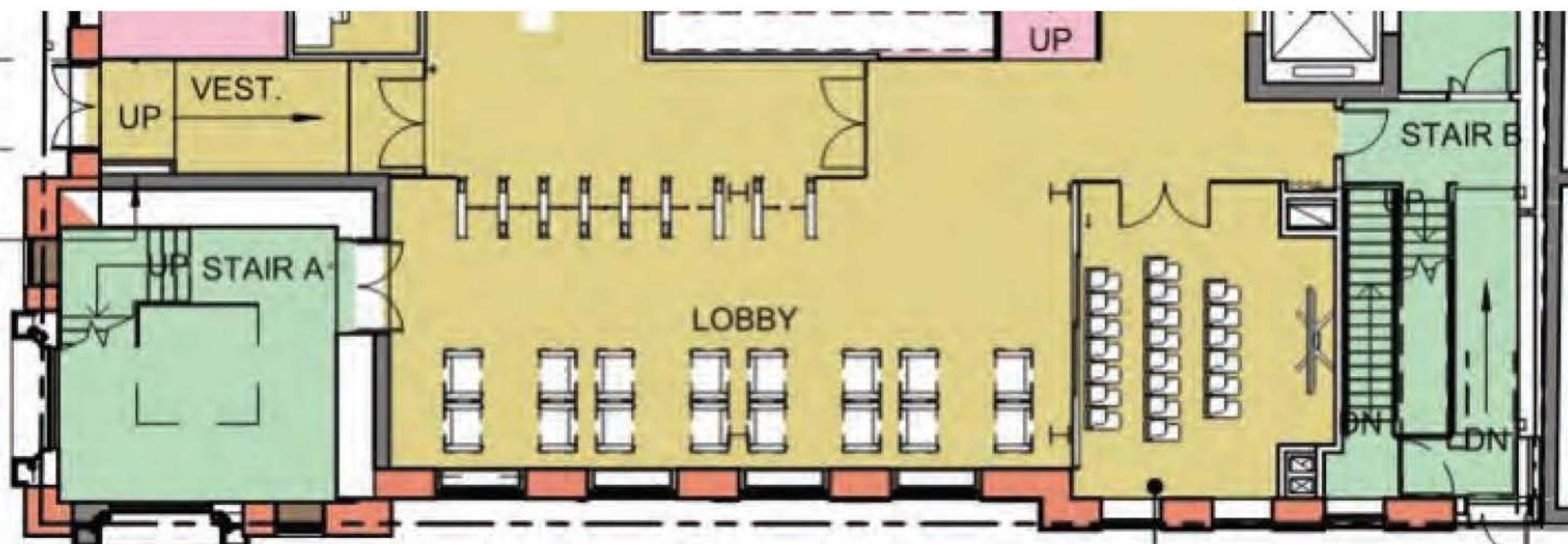
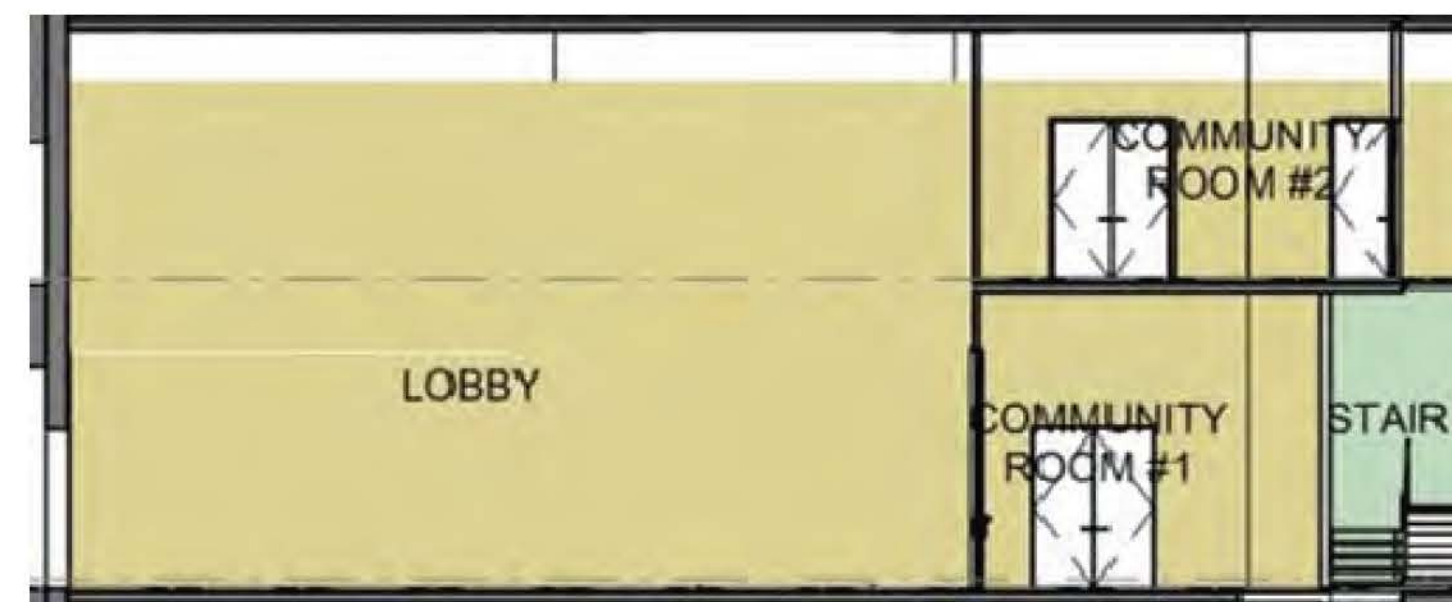


LEVEL 7 COMM RM#3 & 4
七層 - 社區活動室三號和四號

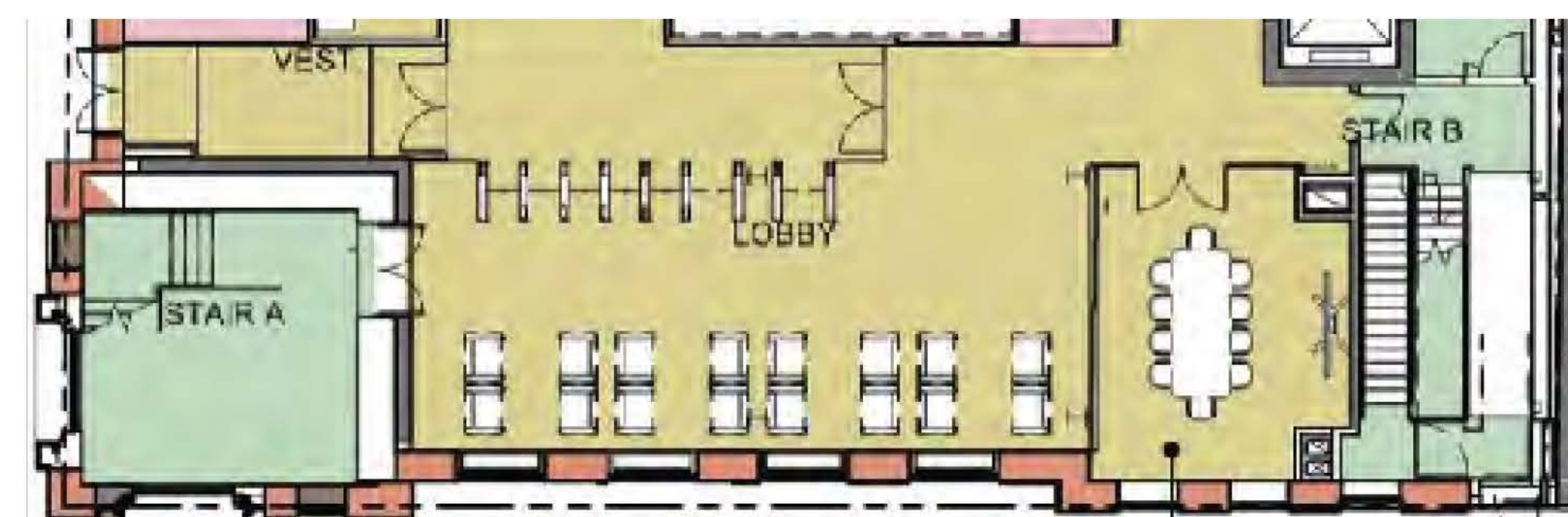
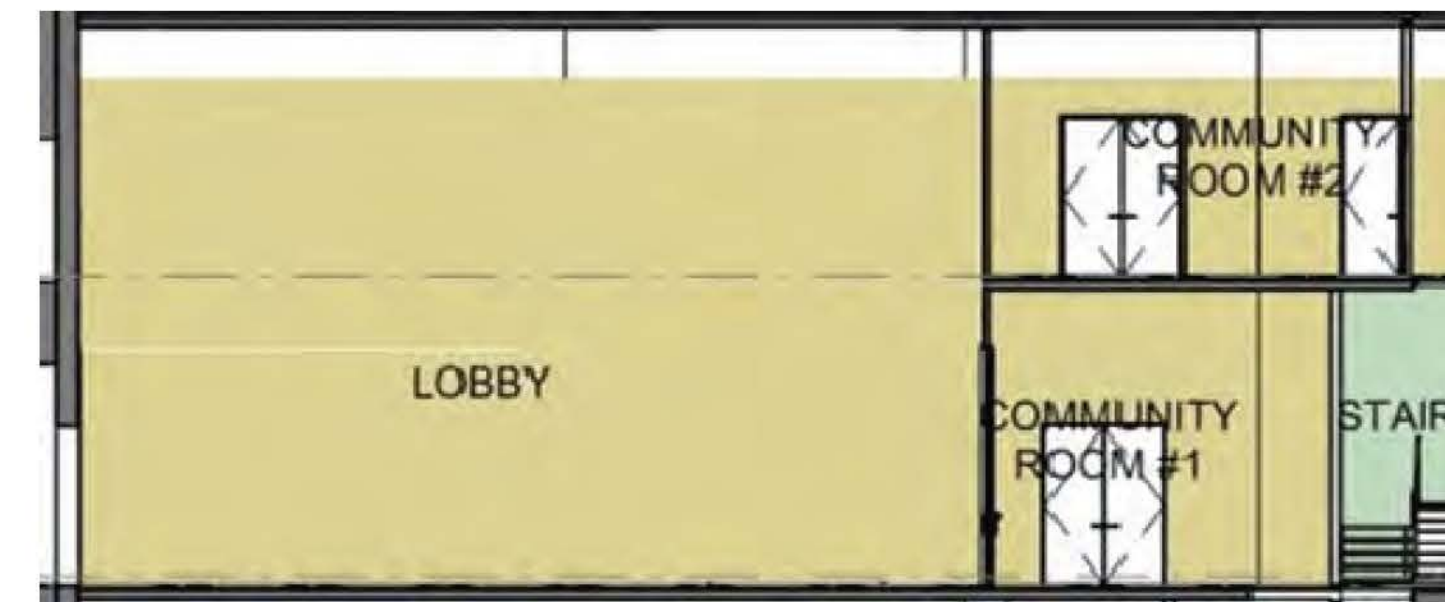
LEVEL 1 - LOBBY & COMMUNITY ROOM#1

一層 - 大堂和一號社區活動室

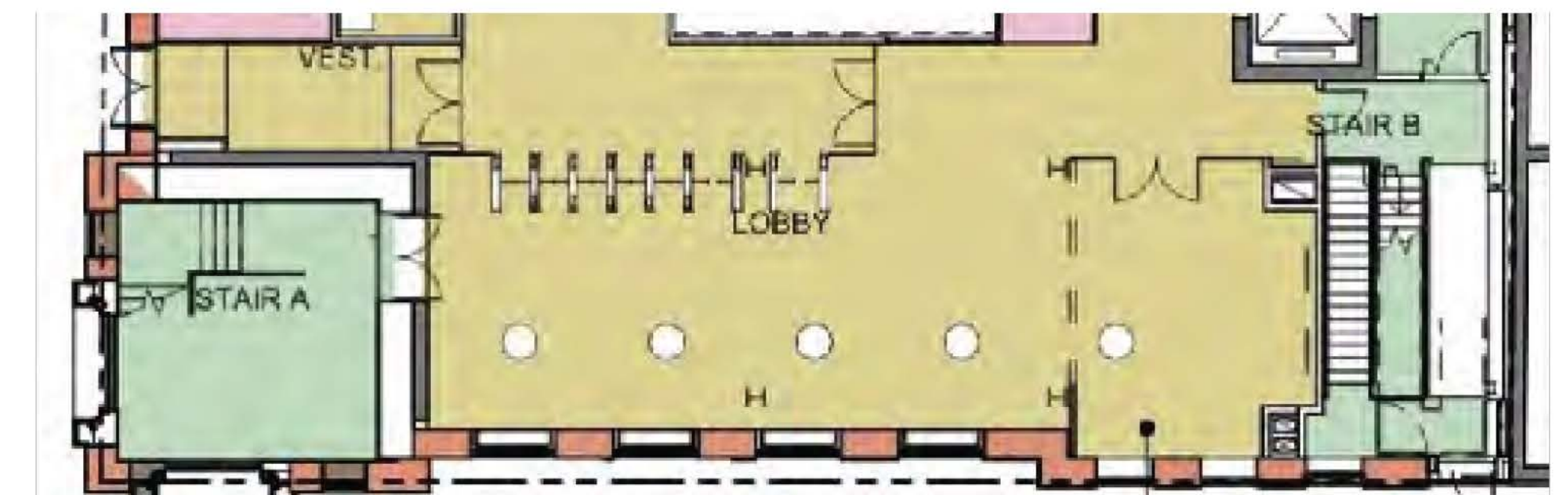
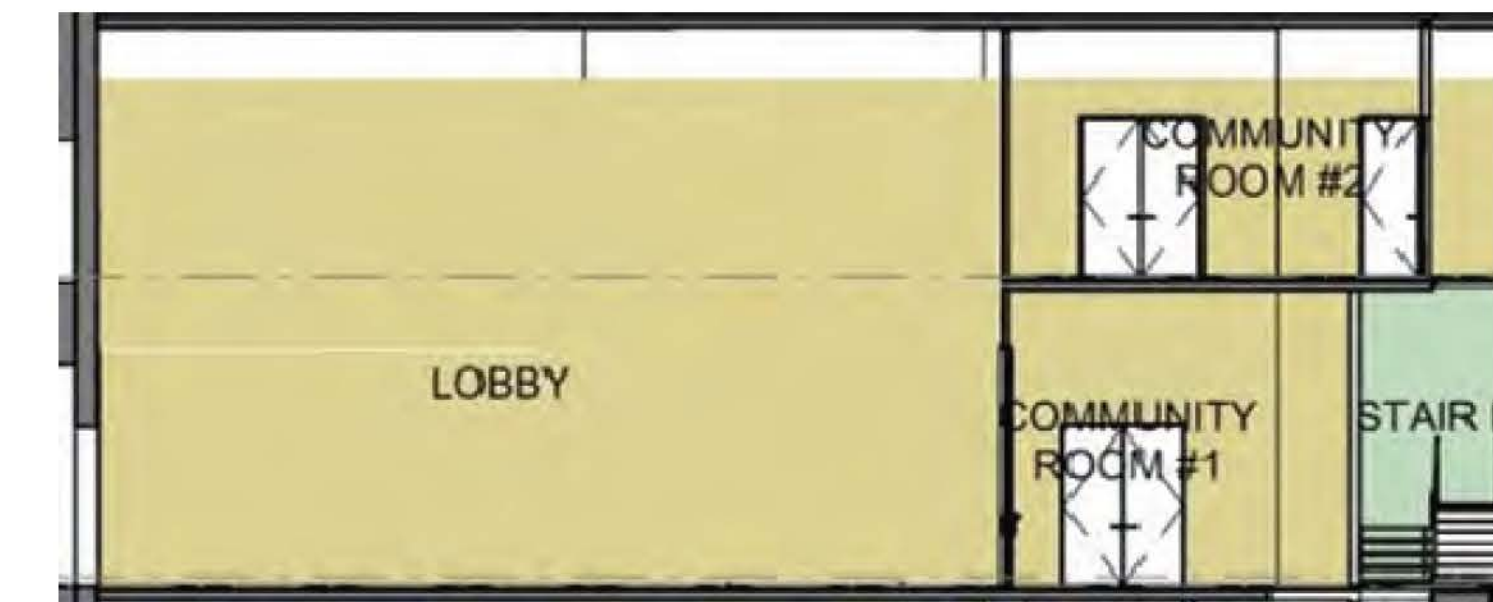
Regular Use + Lecture Mode (21 Seats)
常規使用 + 演講模式 (21 席)



Regular Use + Conference Mode (10 Seats)
常規使用 + 會議模式 (10 席)



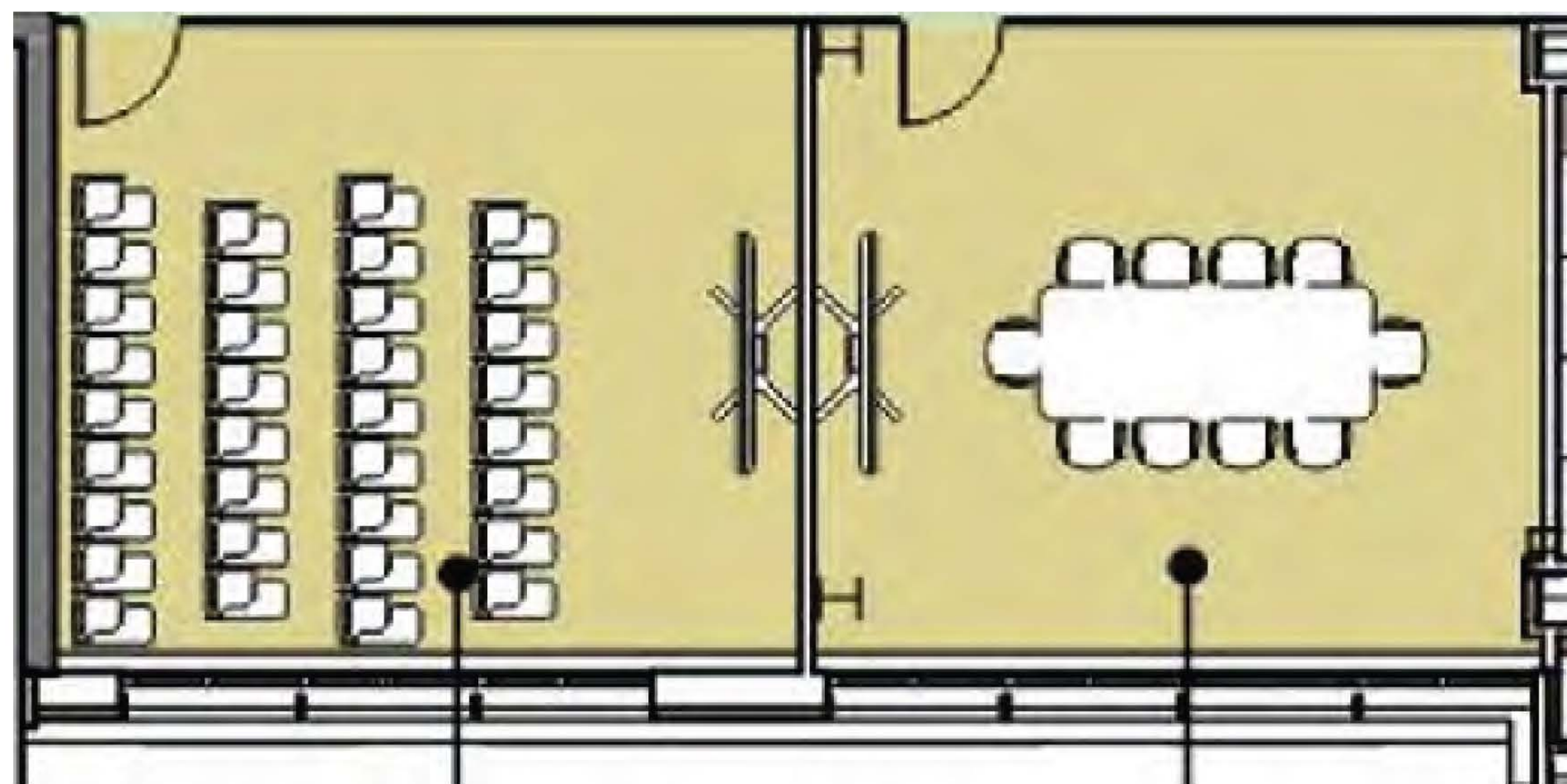
Event Mode (120 people max)
活動模式 最多 120 席



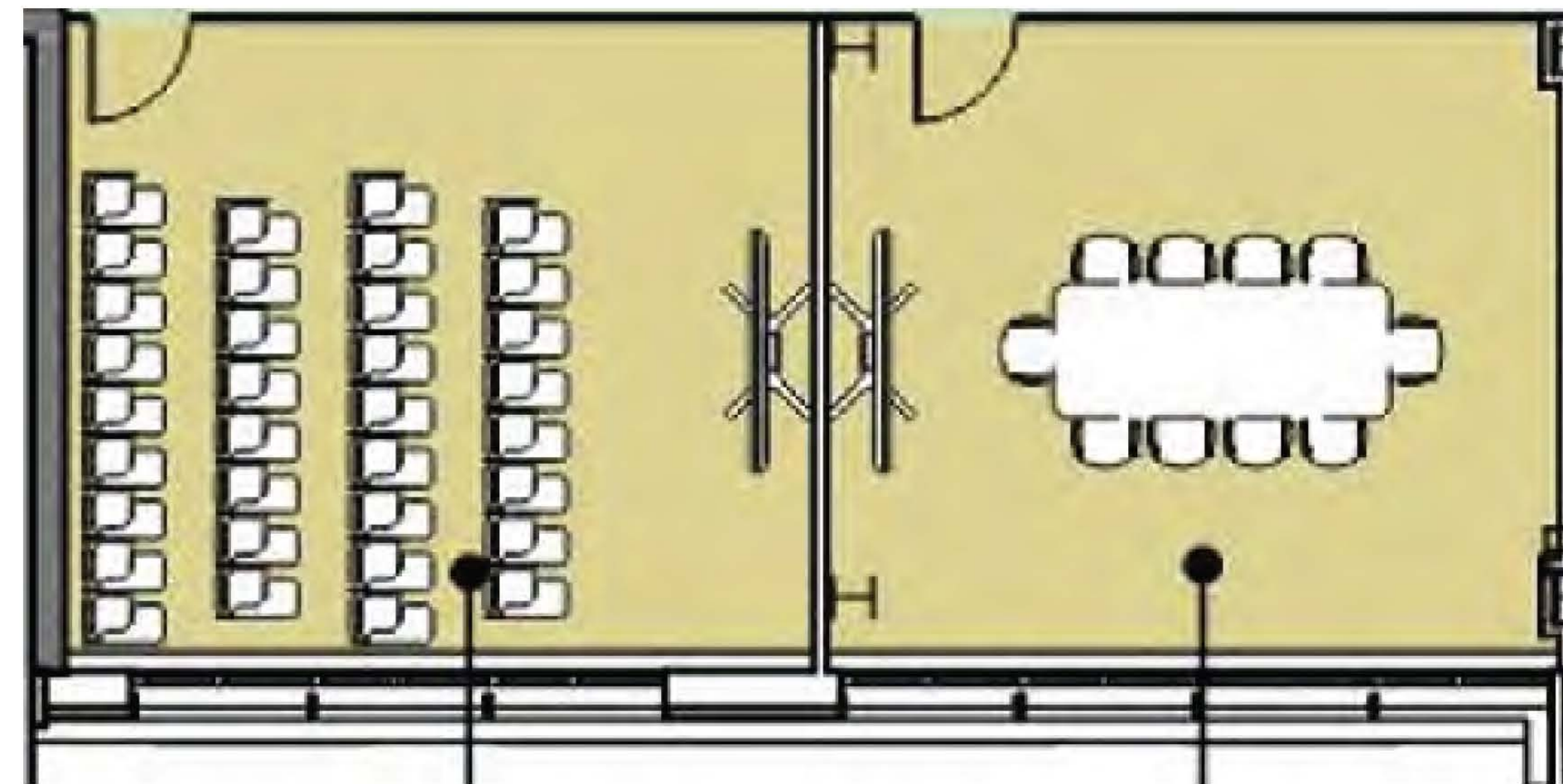
LEVEL 2 & 3 - COMMUNITY ROOM & OFFICE

二層和三層 - 社區活動室和辦公室

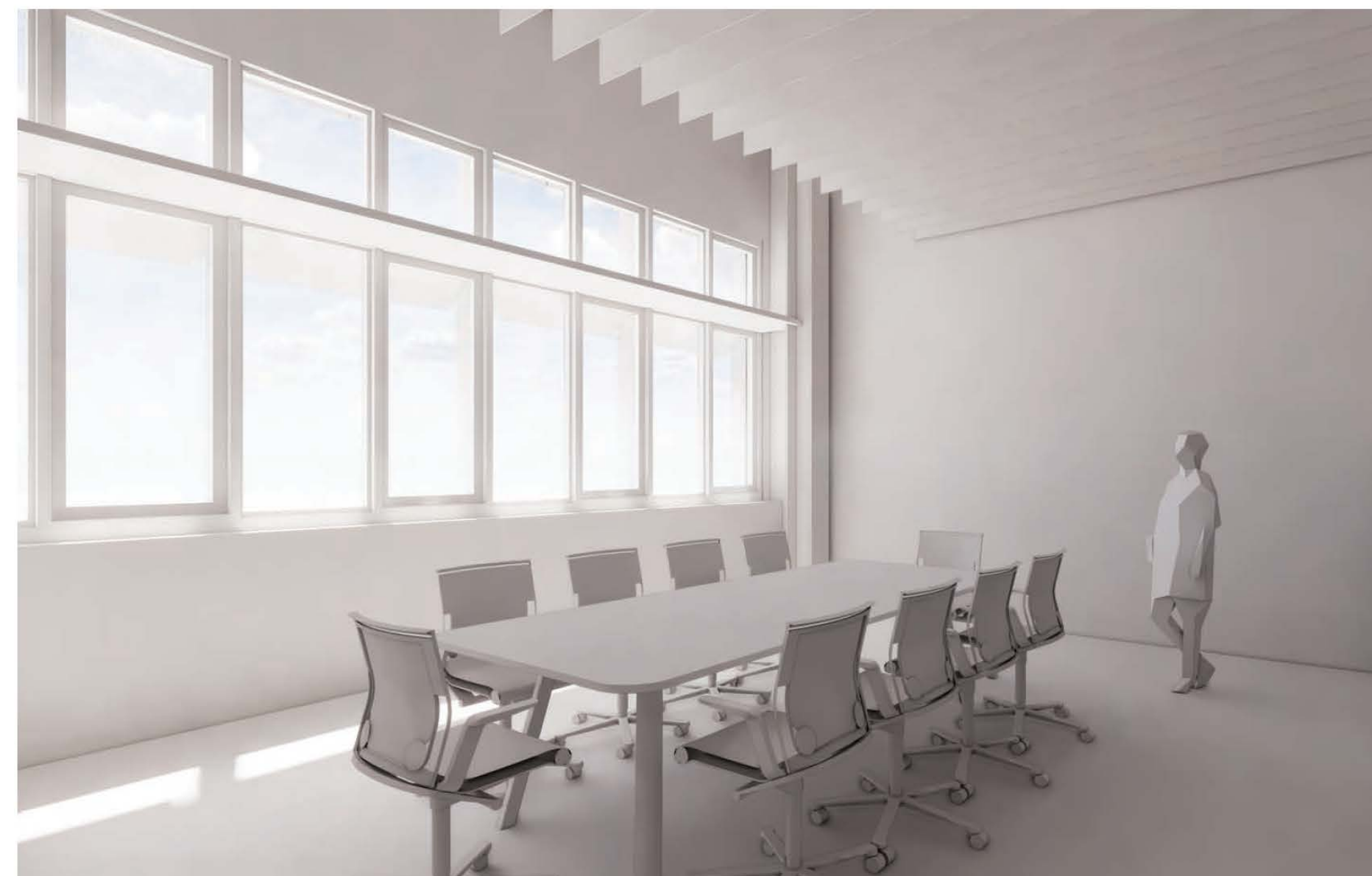
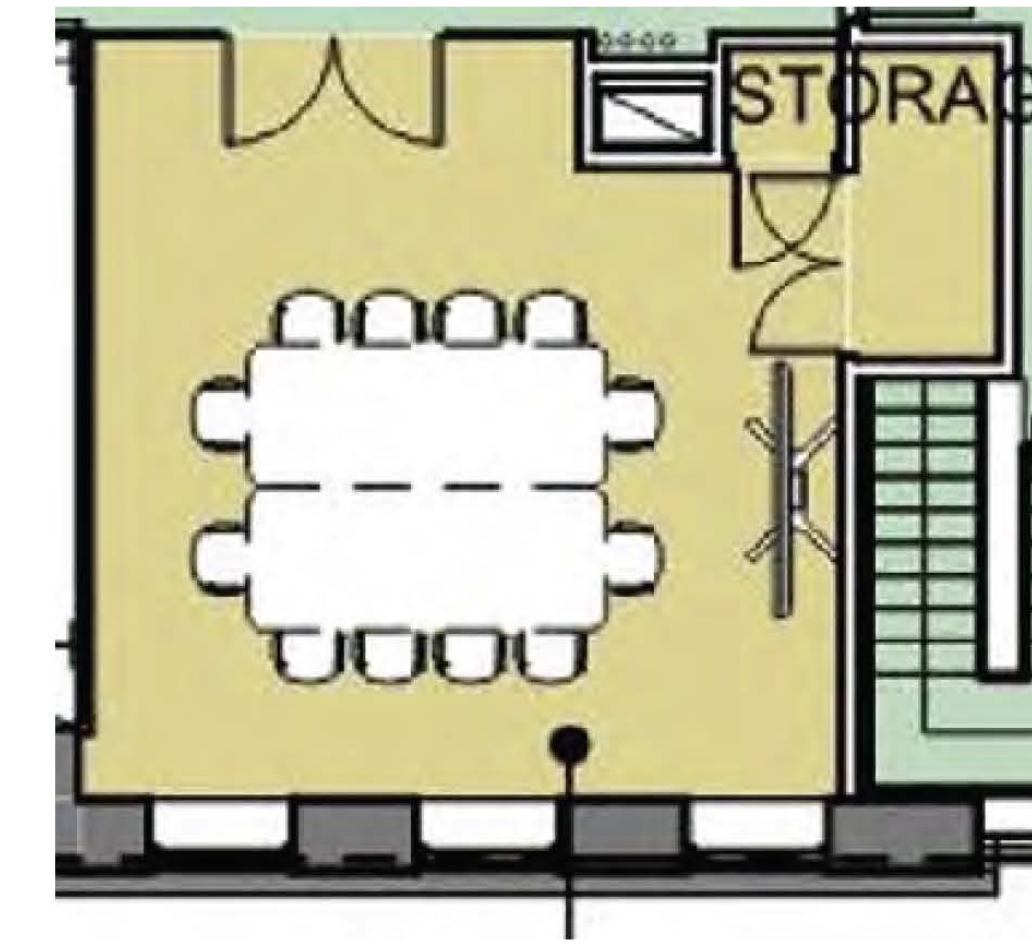
Additional Office and Tenant Space 1
額外辦公室和租戶空間一號



Additional Office and Tenant Space 2
額外辦公室和租戶空間二號



Community Room 2
社區活動室二號



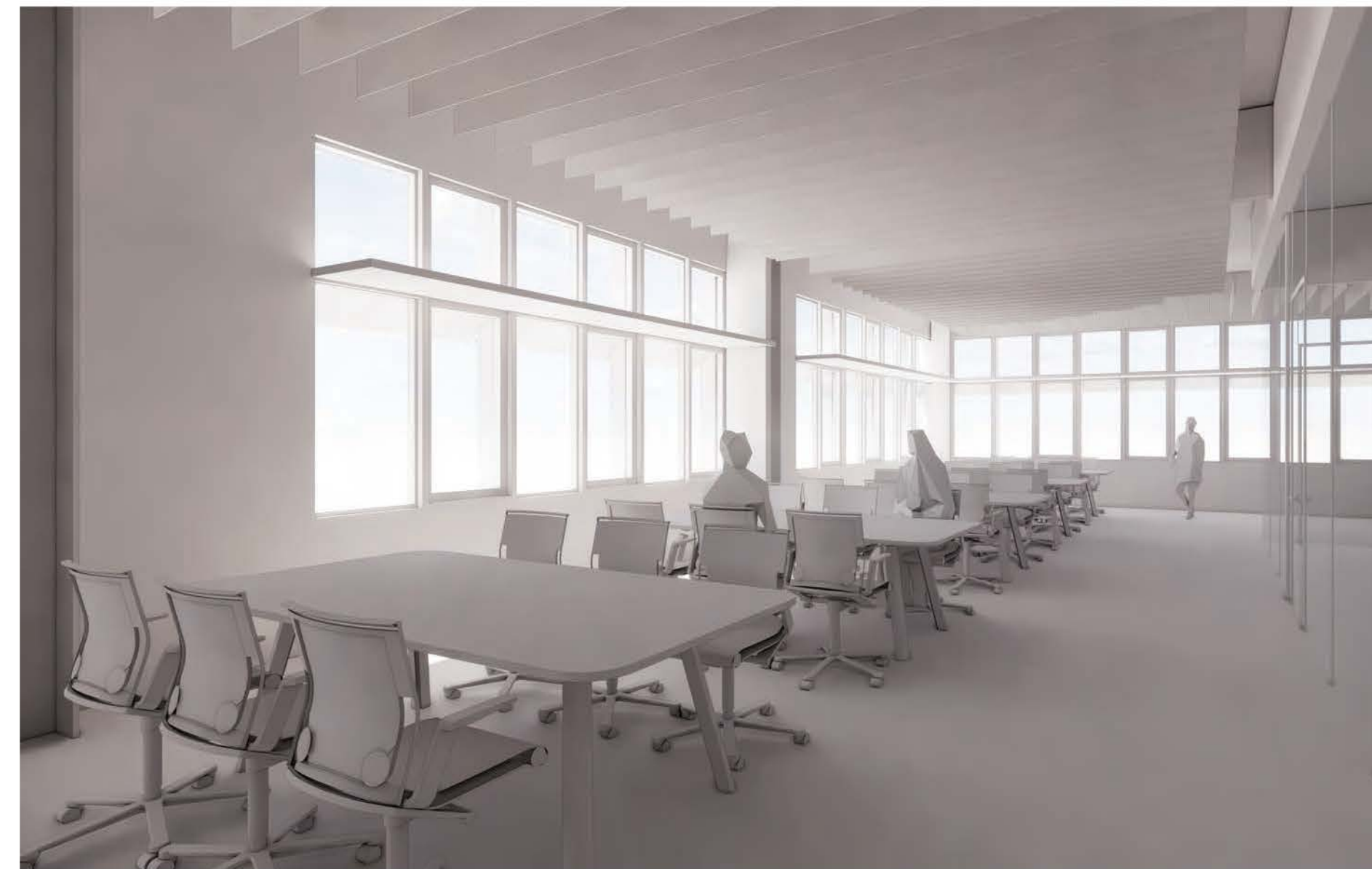
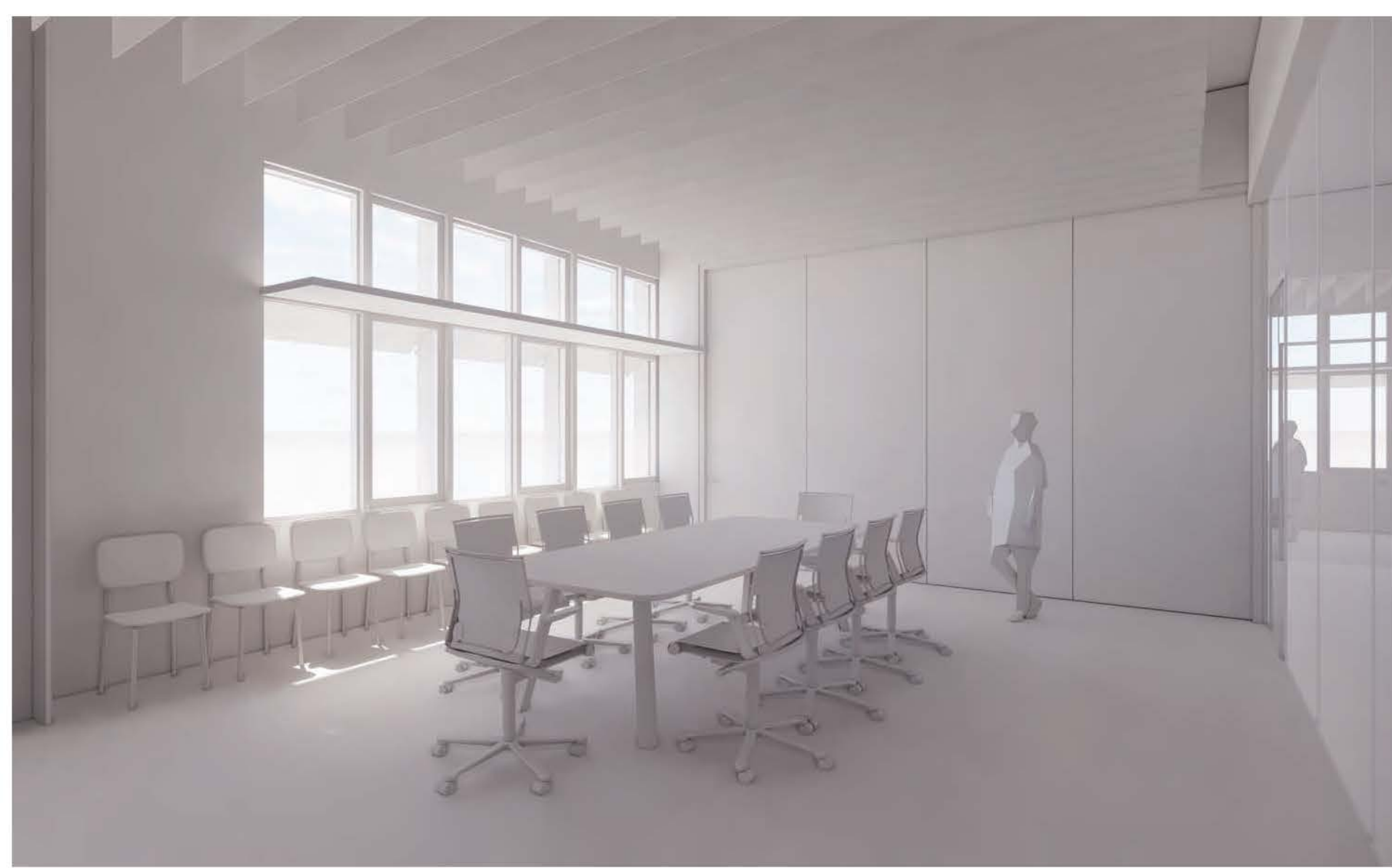
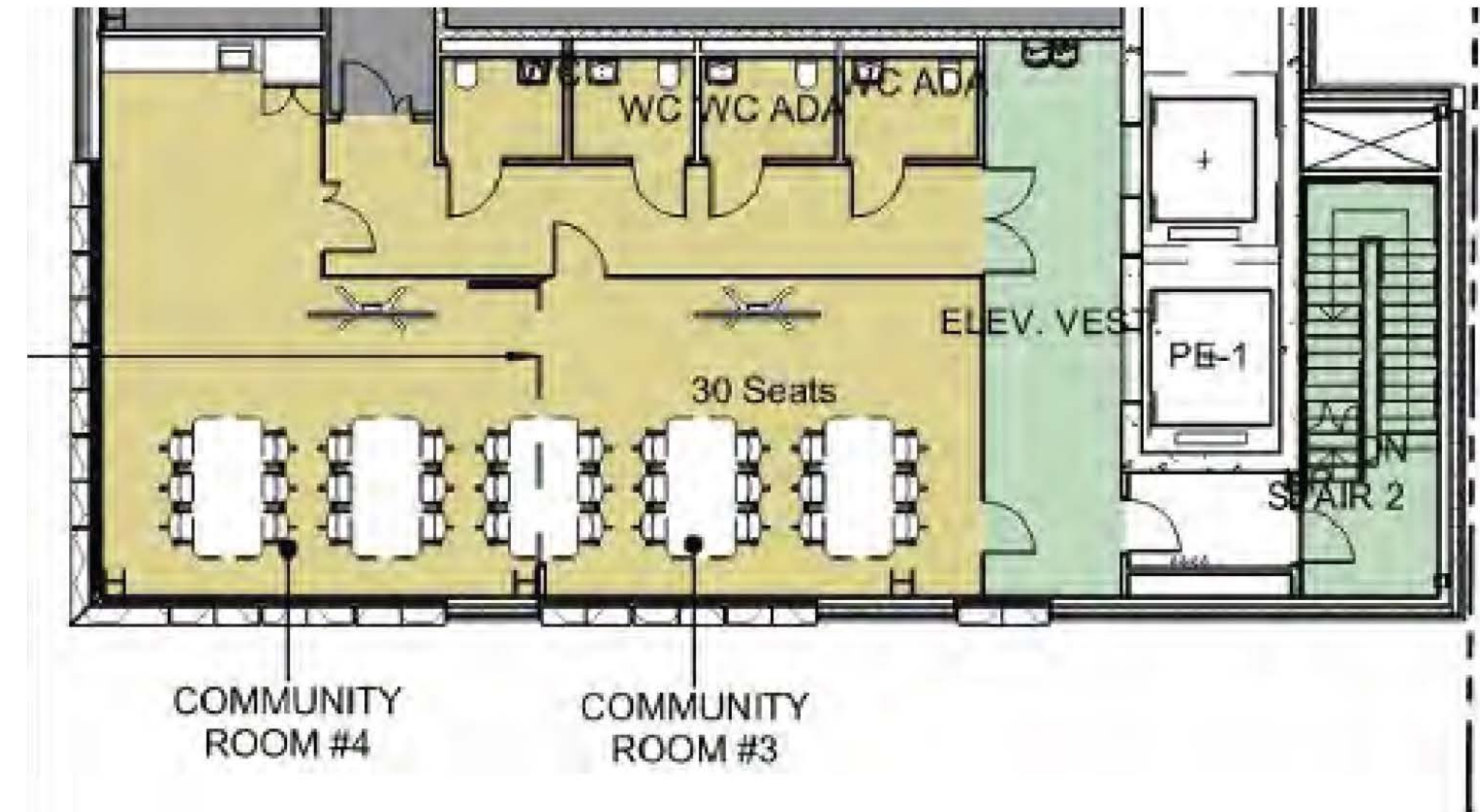
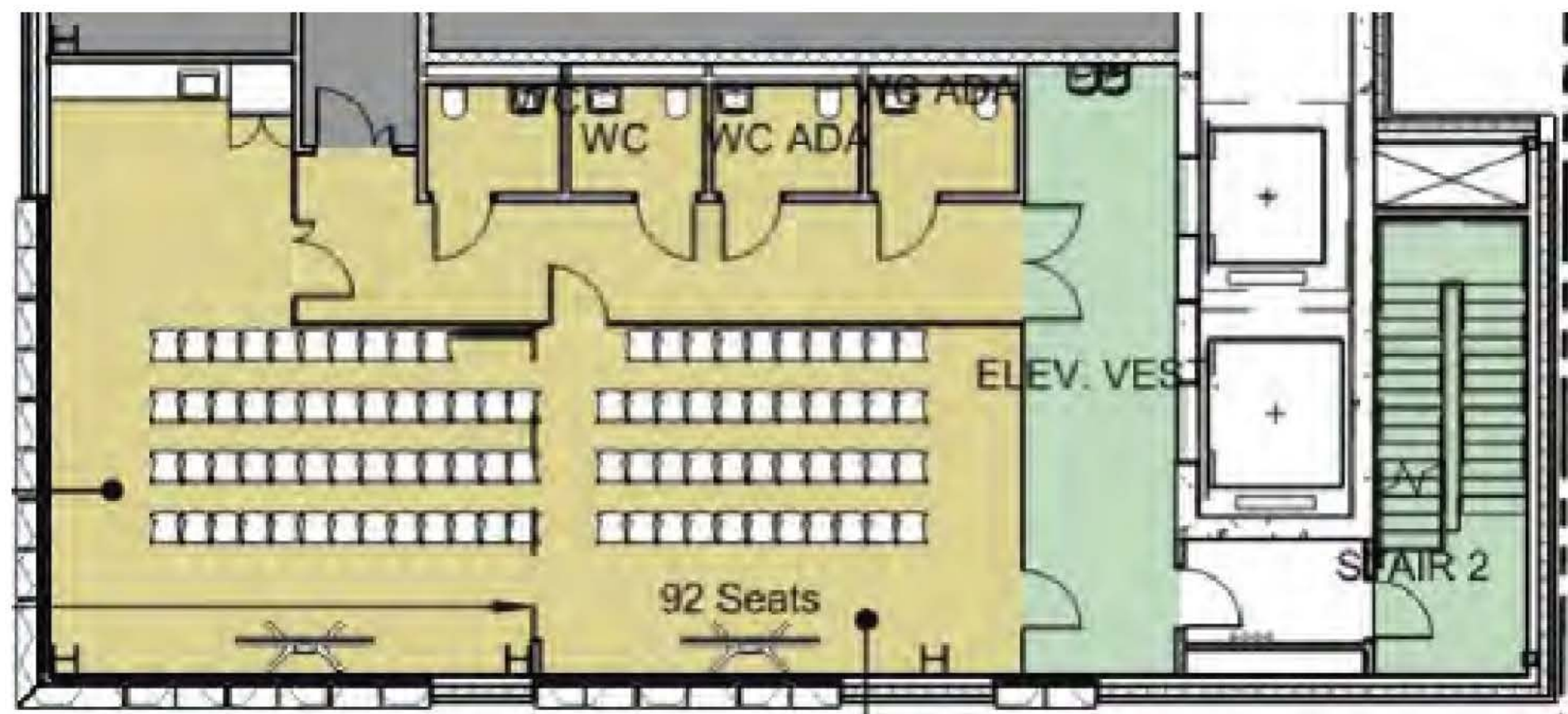
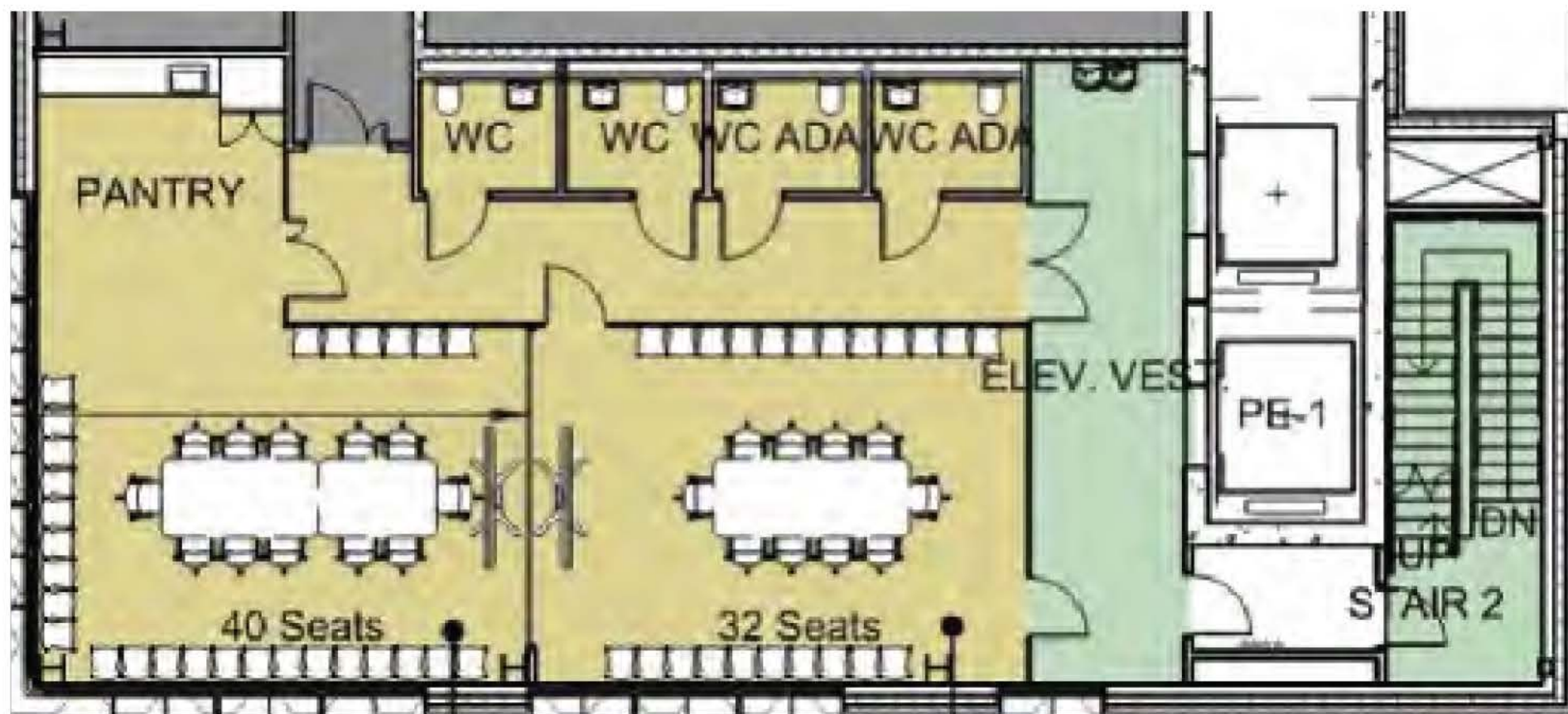
LEVEL 7 - COMMUNITY ROOM #3 & #4

七層 - 社區活動室三號和四號

Hybrid mode 72 seats
混合模式 - 72席

Lecture mode 96 seats
演講模式 - 96席

Workshop Mode 30 seats
工坊模式 - 30 席

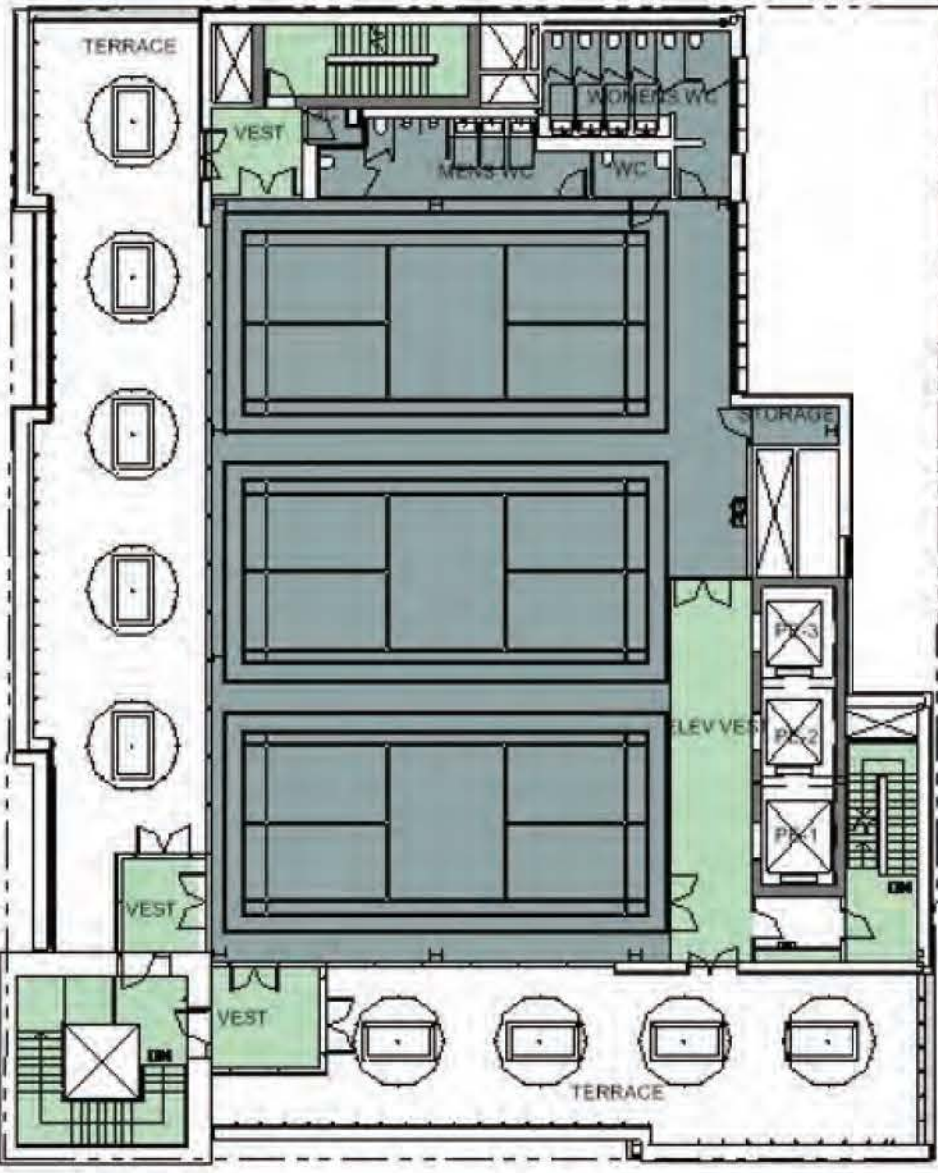


LEVEL 6 – MULTIPURPOSE ROOM SPORT MODE

六樓 - 多用途房 體育模式

Plan Configuration 平面圖配置

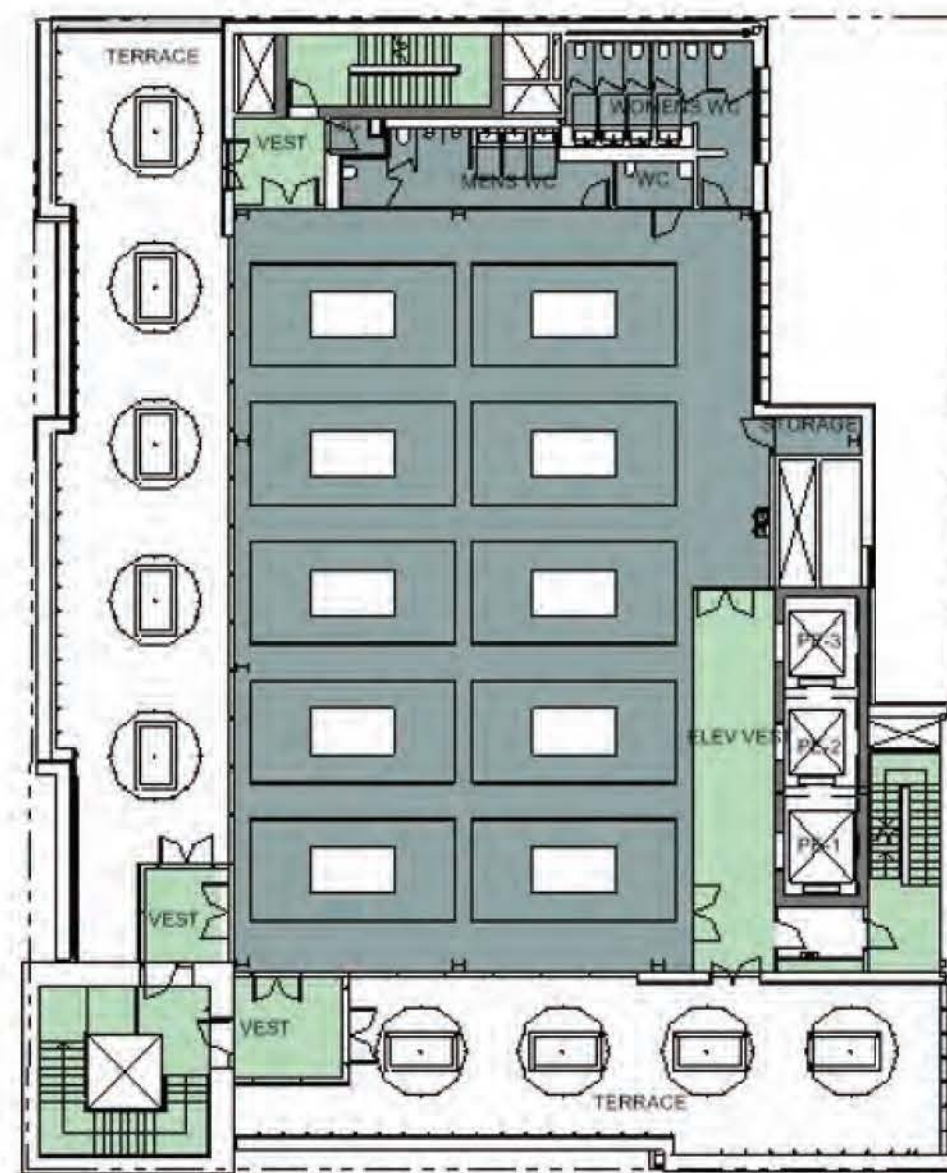
BADMINTON 羽毛球



Regulation size court size
(20'x44' + 2' surround)
Not regulation height (39')
Lines on floor
Collapsible badminton net
stored on 6M

規則尺寸球場尺寸 (20'x44' + 2' 圍合)
不符合規定高度 (39')
場地劃綫
可折疊羽毛球網存放於 6M

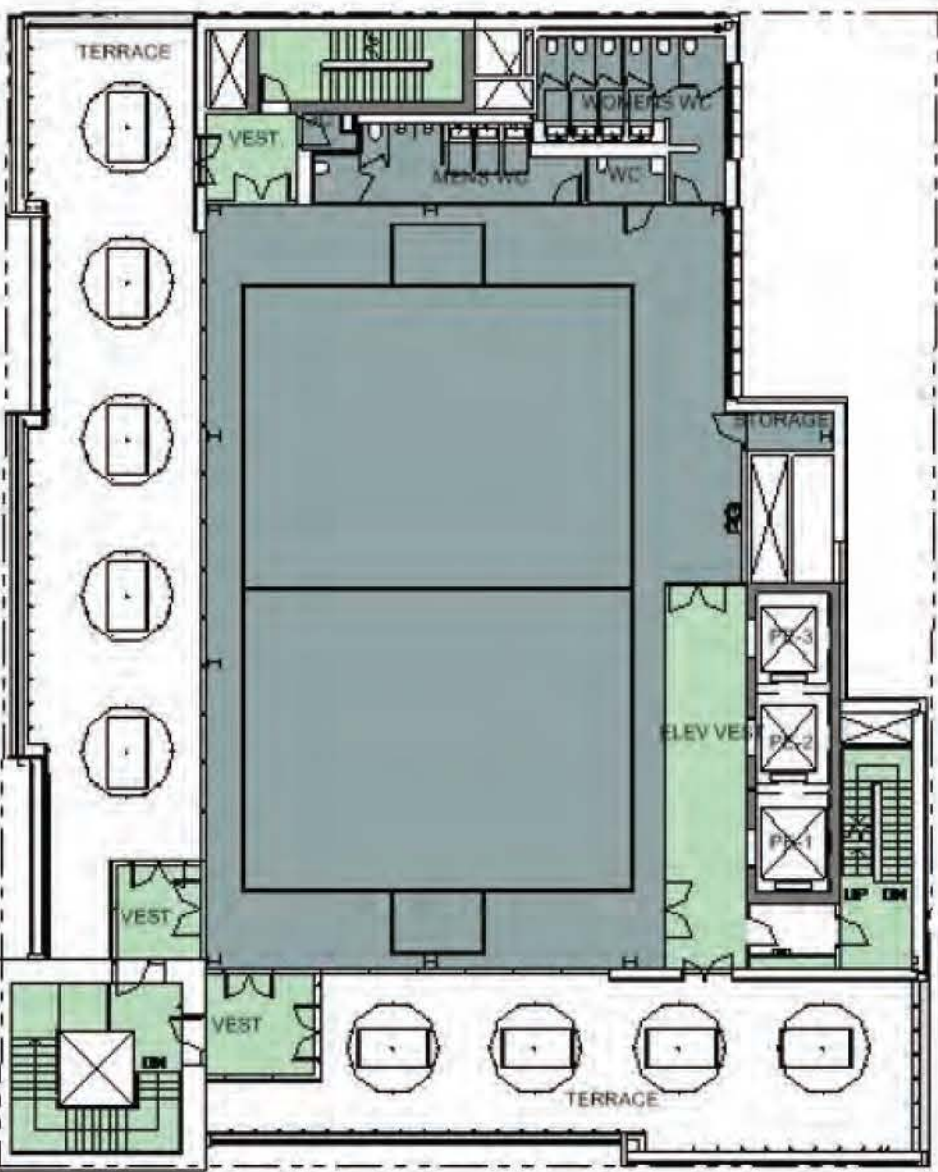
TABLE TENNIS 乒乓球



Tables are regulation
size (5'x9')
Collapsible tables stored
on 6M

标准尺寸乒乓球(5'x9')
可折疊桌存放於 6M

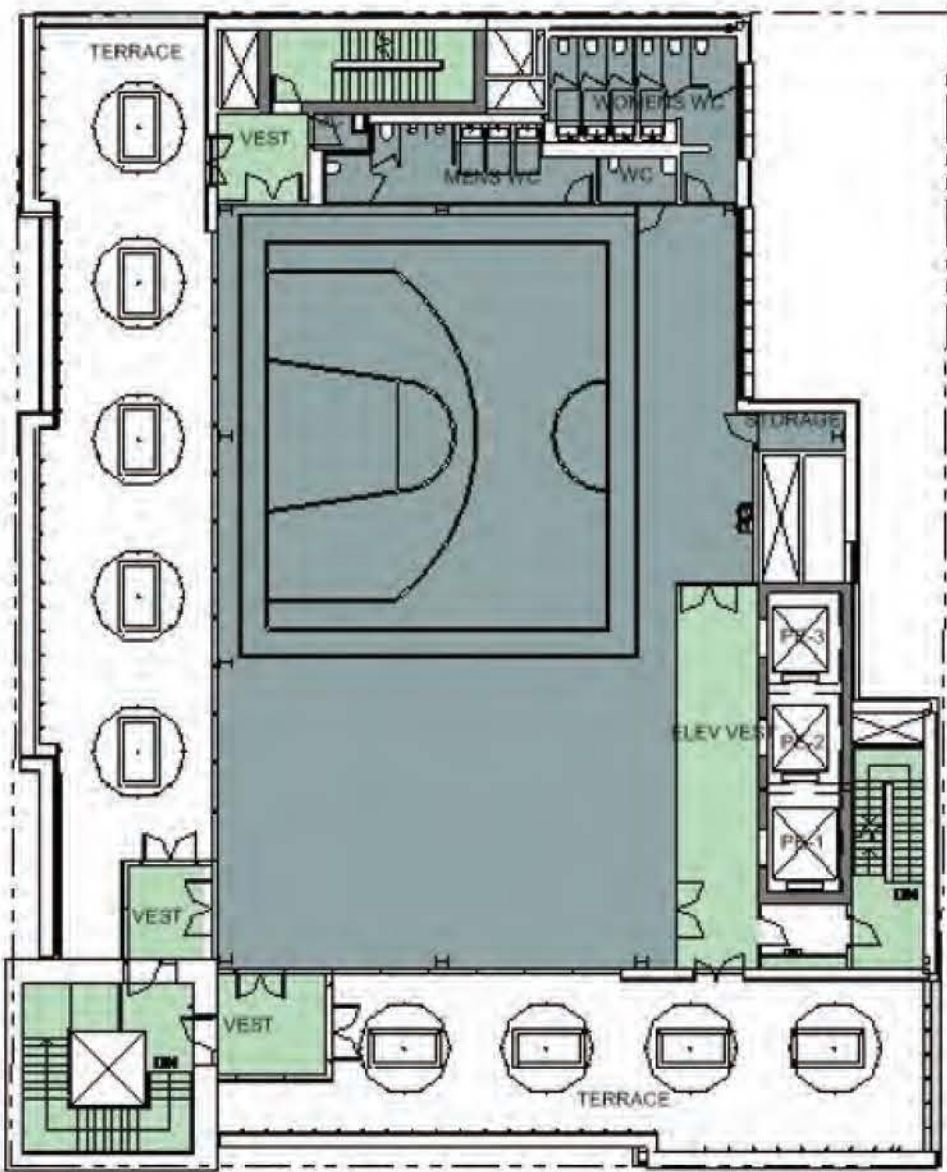
MINI PITCH SOCCER 迷你足球場



Mini-pitch field size
(42'x65' + goals 6'-5"x9'-8")
Lines on floor
Goals stored on 6M

迷你球場大小(42'x65' + 球
門6'-5' x9'-8')
場地劃綫
球門存放於 6M

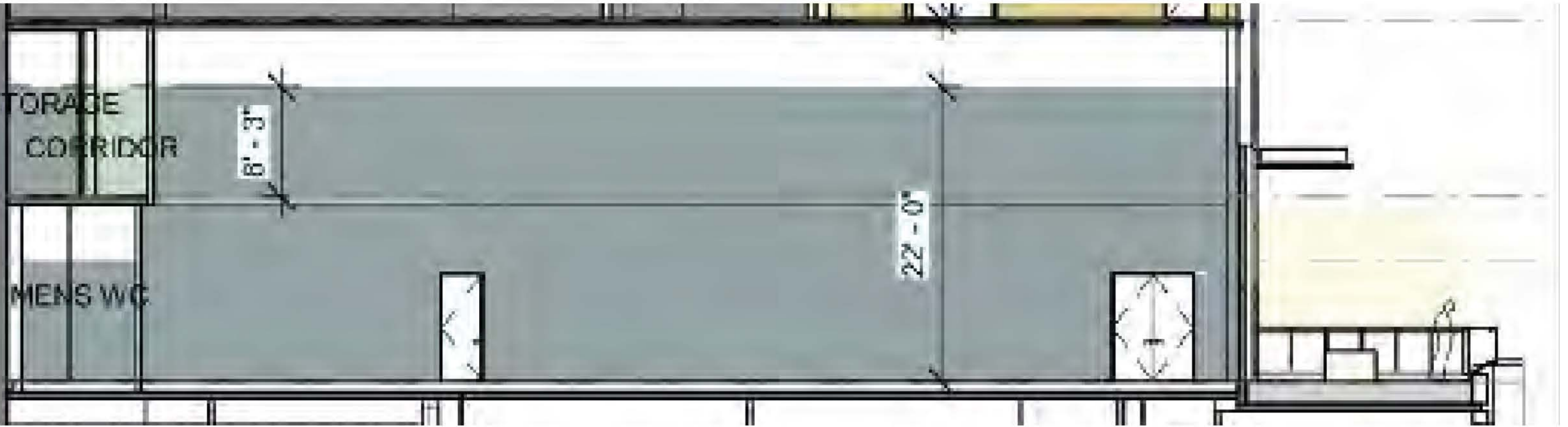
HALF COURT BASKETBALL 半場籃球場



Youth half court size
(37'x42' + min. 3'
surround)
Retractable basketball
hoop from ceiling
Lines on floor

青少年半場尺寸(37'x42')
+ 最小3' 圍合)
天花板上可伸縮的籃球箍
場地劃綫

View and Section 視圖和剖面

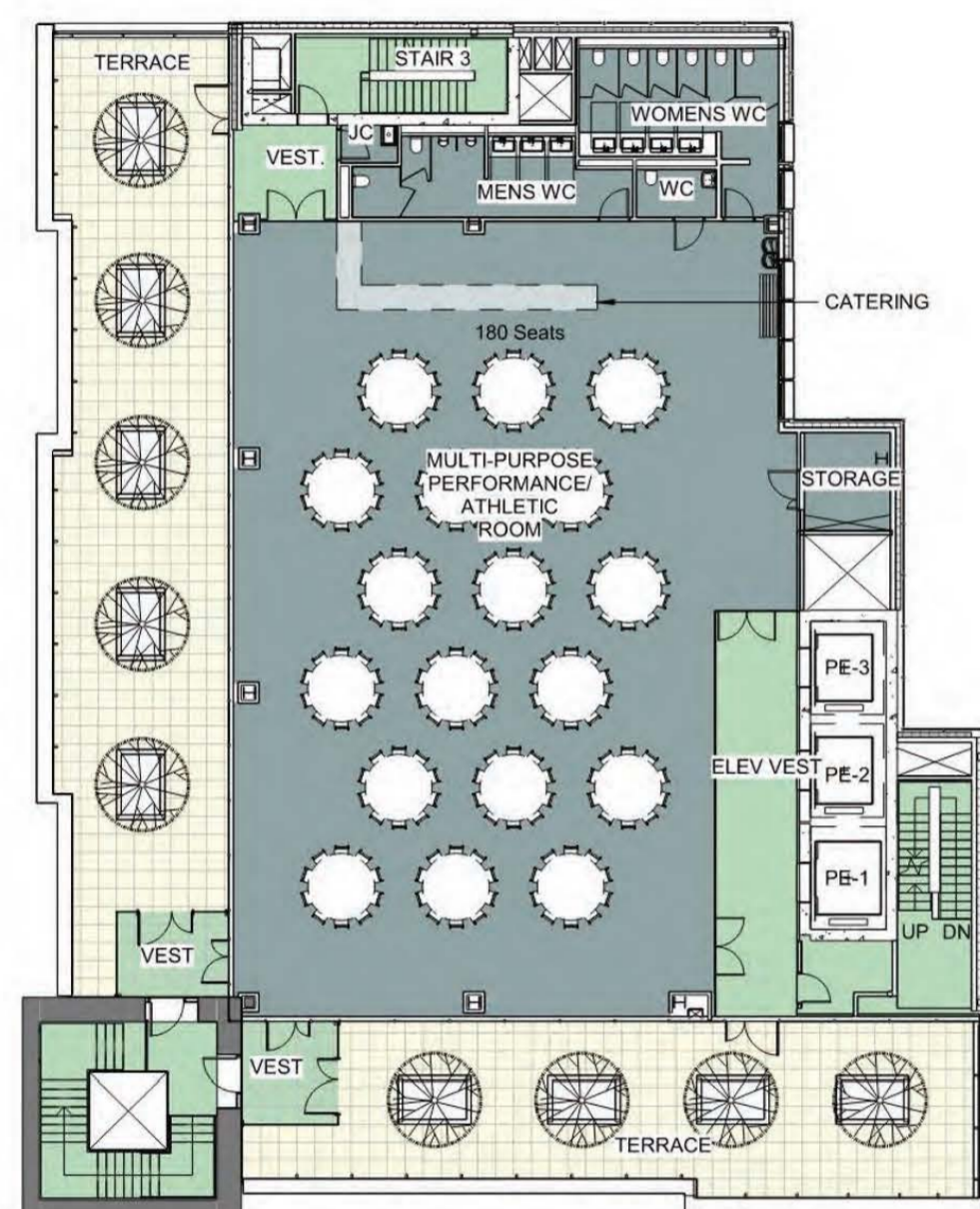


LEVEL 6 – MULTIPURPOSE ROOM GALA & LECTURE MODE

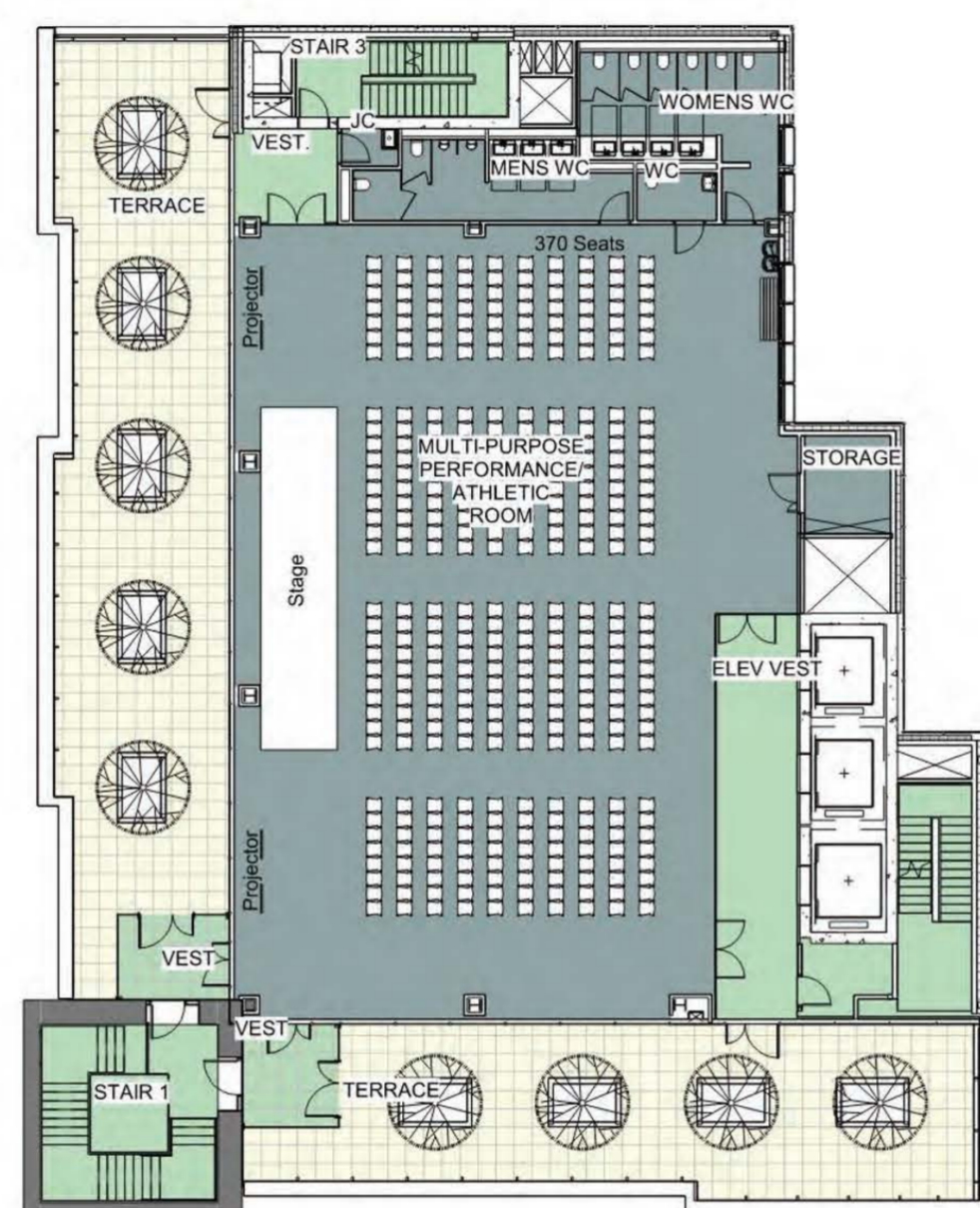
六層 - 多功能房 晚會和演講模式

Plan Configuration 平面圖配置

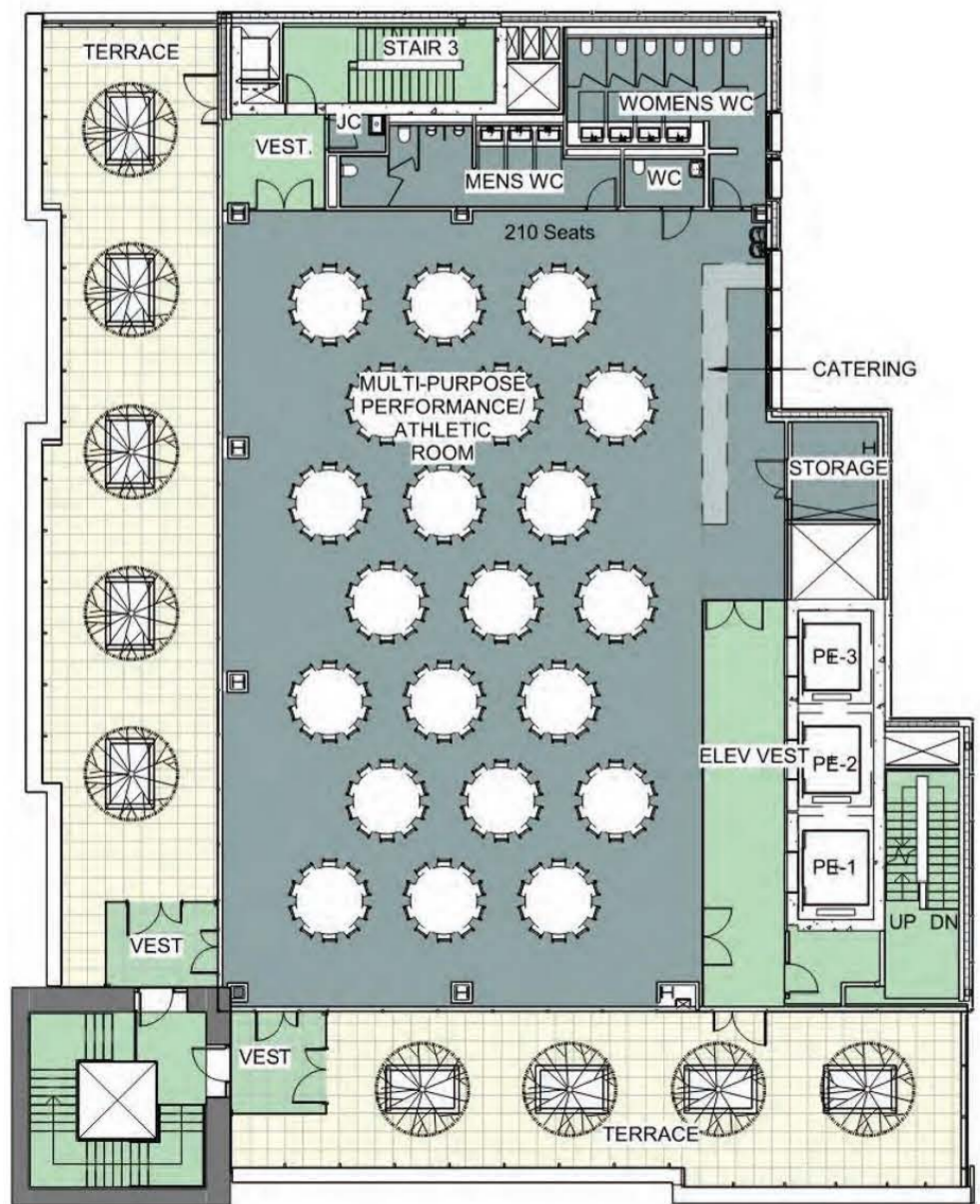
GALA 180 seats
晚會 180 席



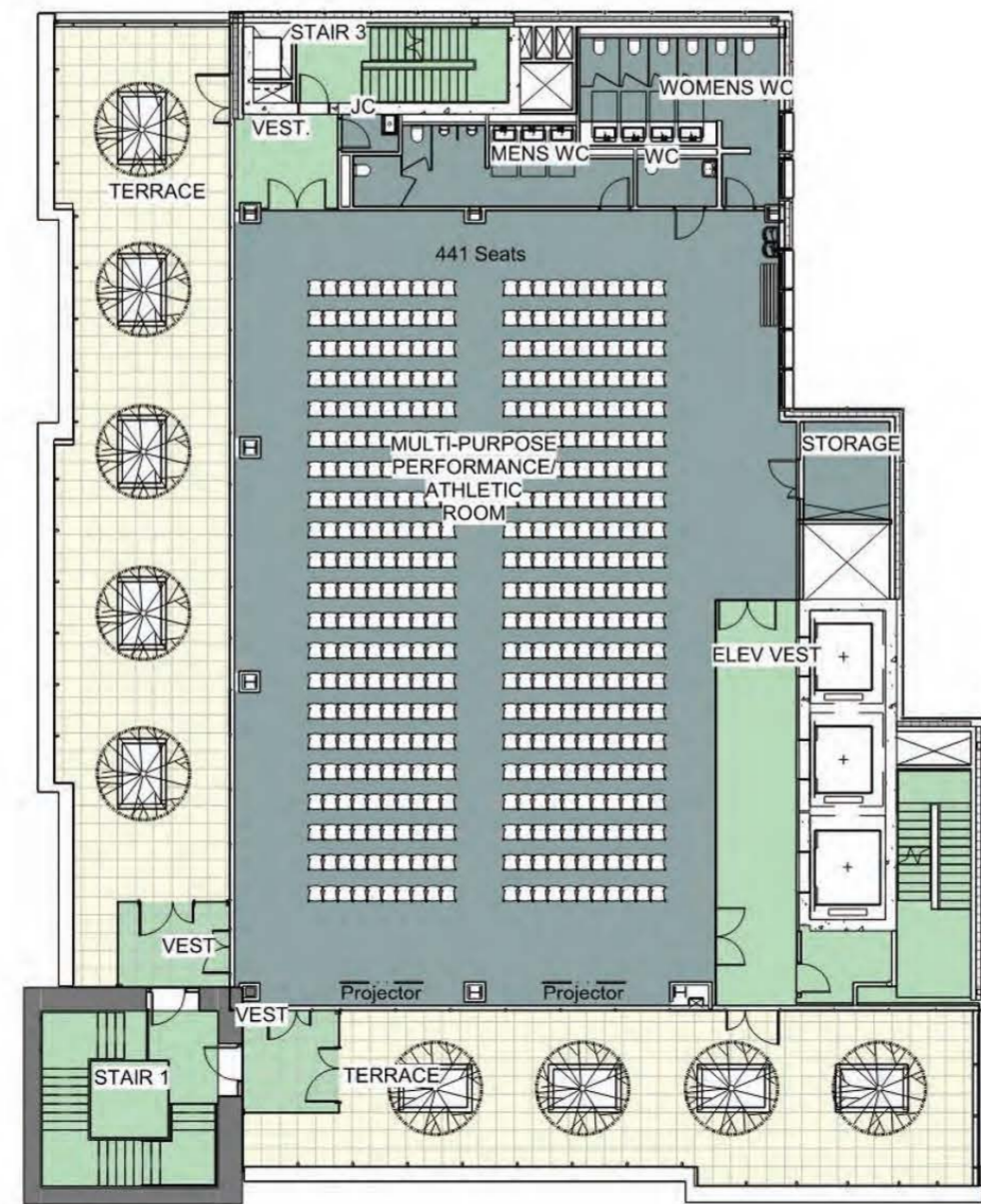
LECTURE 370 seats
演講 370 席



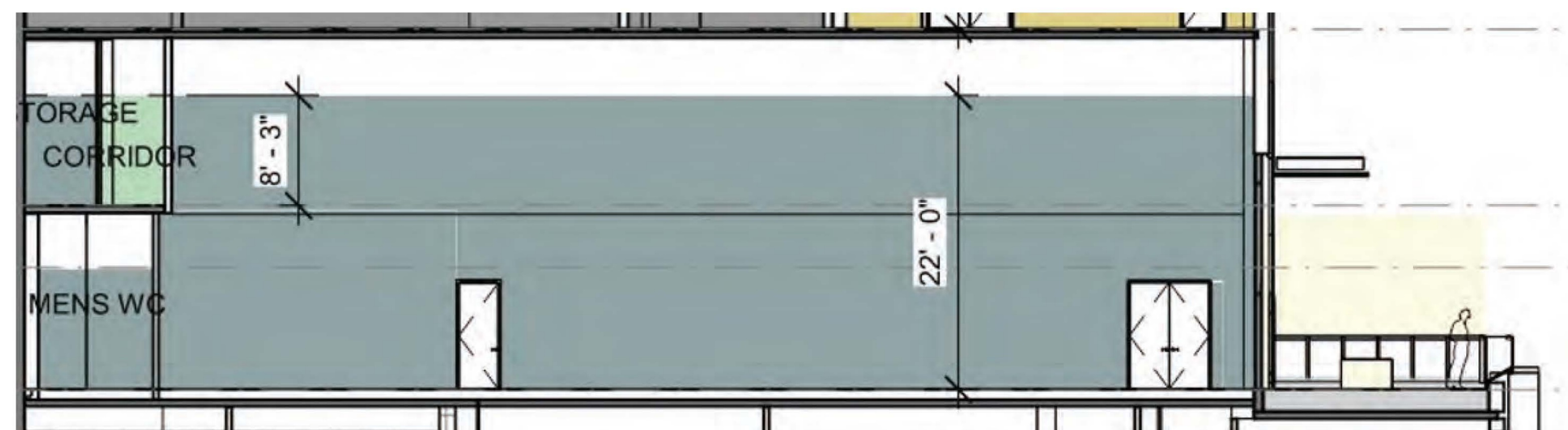
GALA 210 seats
晚會 210 席



LECTURE 441 seats
演講 441 席



View and Section 視圖和剖面



How have you used a space like this in the past?
您過往使用過類似這樣的空間嗎？

Share some ideas!
請與我們分享一些想法！

**Level 1 &
Community Room 1**
一層 - 大堂和一號社區活動室

**Level 2 & 3
Community Room & Office**
二層和三層 – 社區活動室和辦公室

**Level 7
Community Room 3 & 4**
七層 - 社區活動室三號和四號

**Level 6
Multipurpose Hall**
六層 - 多功能大廳

What kinds of events or programming do you foresee happening here?

您預計這裏會舉辦什麼類型的活動或節目？

Share some ideas!
請與我們分享一些想法！

Level 1 &

Community Room 1

一層 - 大堂和一號社區活動室

Level 2 & 3

Community Room & Office

二層和三層 - 社區活動室和辦公室

Level 7

Community Room 3 & 4

七層 - 社區活動室三號和四號

Level 6

Multipurpose Hall

六層 - 多功能大廳

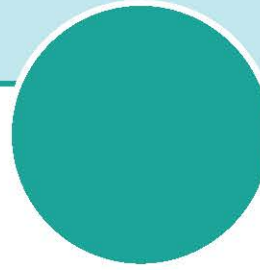
Which of the options do you see yourself using for the community rooms?
您認為以下哪些選項會讓您使用社區活動室？



Lecture
演講



Conference
會議



Event
活動



Other?
其他?

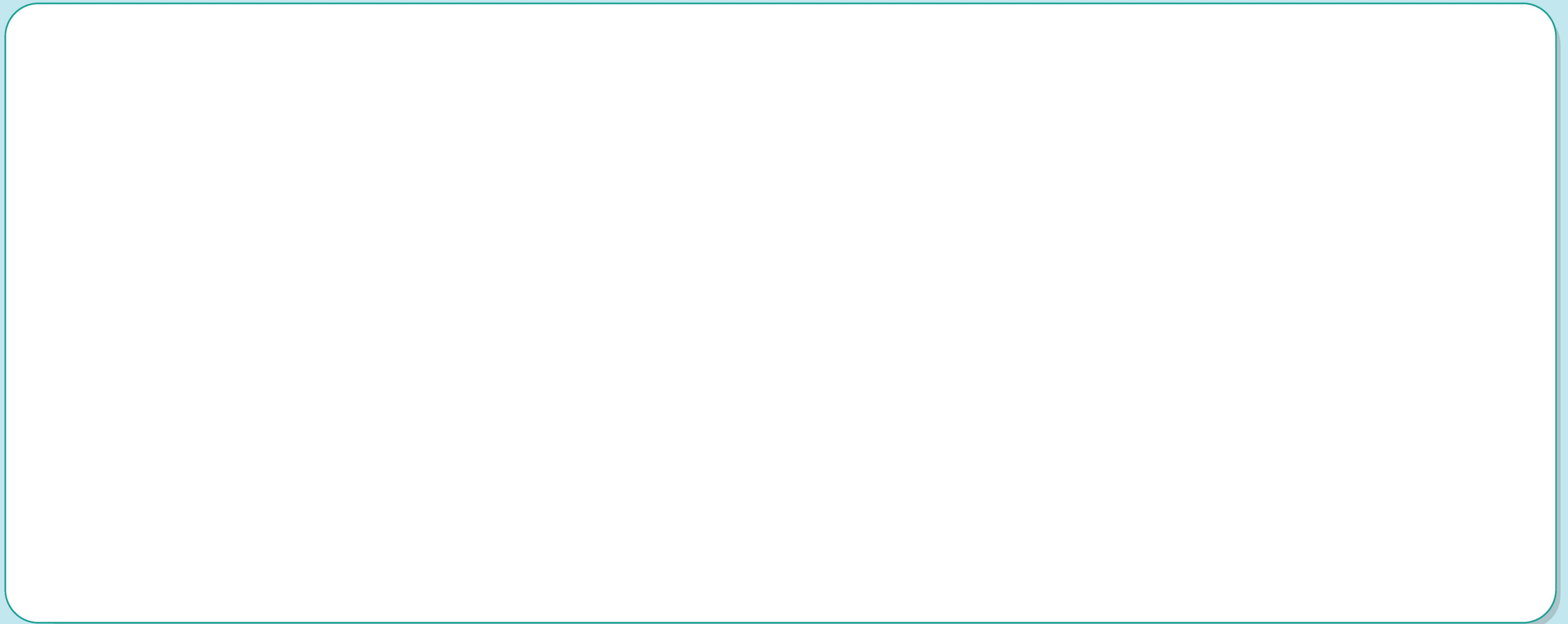
How often do you imagine the programming taking place?
您認為活動發生的頻率是多少？

How many people do you envision joining?
您預計有多少人會加入？

**What keywords or phrases capture the emotions, dreams or meaning
that you would like the artwork to embody for this building?**

您希望此樓的公共藝術品能體現出什麼樣的情感、夢想或含義？
請與我們分享一些能夠捕捉您這些期許的關鍵詞或短句。

Share some ideas!
請與我們分享一些想法！



What factors would you want the design team to consider for the lobby?

您希望設計團隊在大堂設計中考慮哪些因素？

Share some ideas!
請與我們分享一些想法！

Entrance
入口

Digital Information Screen
數字信息屏

Lobby Space
大堂空間

Circulation
人流

How do you see yourself engaging with this building?
您認為自己將如何與此建築互動？

Share some ideas!
請與我們分享一些想法！

A large, empty white rectangular box with rounded corners and a thin teal border, intended for sharing ideas.

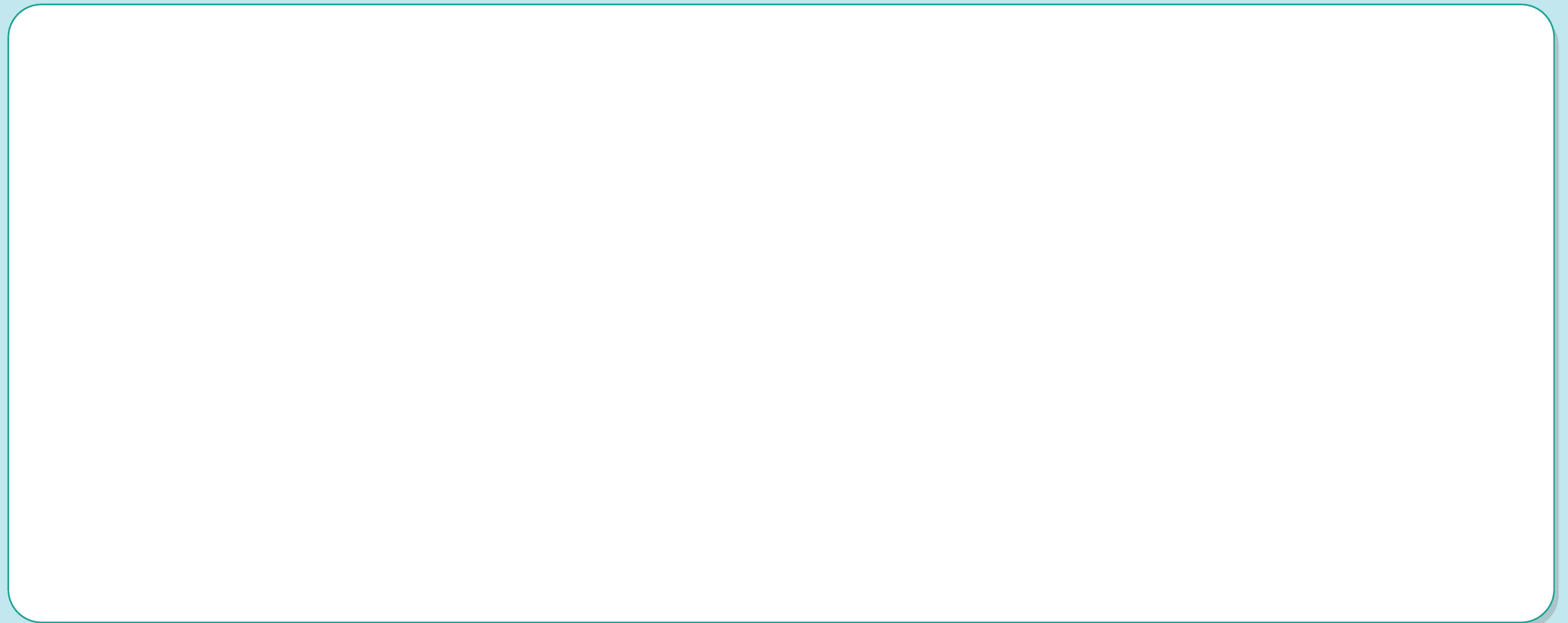
How do you envision this building as an anchor for the community?
您對此建築成為社區支柱的期許是什麼？

Share some ideas!
請與我們分享一些想法！



How do you see this building moving forward the legacy of 70 Mulberry St?
您認為此建築將如何推動 茂比利街 70 號 的歷史及後續發展？

Share some ideas!
請與我們分享一些想法！



Which of the options do you see yourself using for the multipurpose hall? 您認為自己會在多功能廳中使用哪些選項？

HALF COURT BASKETBALL
半場籃球場

BADMINTON
羽毛球

TABLE TENNIS
乒乓球

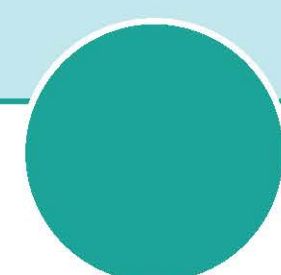
MINI PITCH SOCCER
迷你足球場

**How often do you imagine the
programming taking place?**
您認為活動發生的頻率是多少？

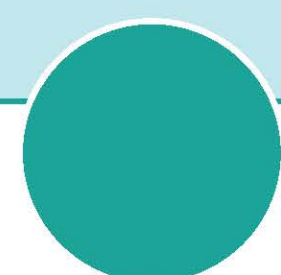
**How many people do you
envision joining?**
您預計有多少人會加入？

Which of the options do you see yourself using for the multipurpose hall?

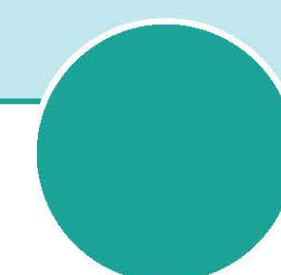
您認為自己會在多功能廳中使用哪些選項？



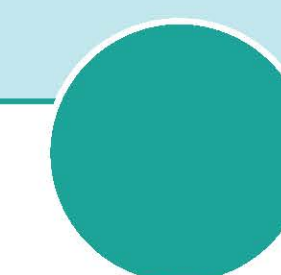
GALA
晚會



LECTURE
演講



RECREATION
娛樂



Other?
其他?

**How often do you imagine the
programming taking place?**

您認為活動發生的頻率是多少？

**How many people do you
envision joining?**

您預計有多少人會加入？