



RESCINDED BY
1 RCNY 1101-01
EFFECTIVE 12/30/15

DEPARTMENT OF BUILDINGS

EXECUTIVE OFFICES
60 HUDSON STREET, NEW YORK, NY 10013

CHARLES M. SMITH, Jr., R.A., Commissioner

ISSUANCE # 127

GEORGE E. BERGER, P.E.
Assistant Commissioner
Building Construction

TECHNICAL
POLICY AND PROCEDURE NOTICE # 15 /88

TO: BOROUGH SUPERINTENDENTS

FROM: George E. Berger, P.E.
Assistant Commissioner *HEB*

DATE: September 6, 1988

SUBJECT: LOCAL LAW #58/87 - ACCEPTABLE PROTOTYPES

Local Law 58 of 1987, was enacted to insure that facilities be provided for people having physical disabilities. Plans approved by the Department of Buildings must show full compliance with this law.

For simplification and informative purposes, after review and acceptance by the Commissioner's Task Force for The Handicapped, the Department has determined that the annexed prototypes comply with the standards of Local Law 58/87 and shall be accepted as-of-right.

Plans showing designs differing from these or any other acceptable prototypes shall be accepted only after review for compliance with Local Law 58/87.

Notice should be taken that "Item (4) Bathrooms" - Technical Policy & Procedure Notice #8/88 is modified by the annexed prototypes.

Distribution List Attached.

RESCINDED

**RESCINDED BY
1 RCNY 1101-01
EFFECTIVE 12/30/15**

DISTRIBUTION LIST FOR POLICY & PROCEDURES

Charles M. Smith, Jr.

Cornelius F. Dennis

Stewart D. O'Brien

Lorraine Adeeb

George Berger

Charles Foy

Sam Galen

Jack Grill

Linda Jackson

Terry Keely

Susan Lerner

James McLoughlin

Marilyn Singer

Herbert Mintz

Ernest Morgan

Lenore Norman

Irving Polsky

Mark Ritze

Robert Sanchez-Gomez

Vahe Tiryakian

Robert Van Alphen

Fred Pocci

Andrew Yosha

Marie Mitchell

Paula Odellas

Mildred Kirk

Pat Iacobazzo

DOB IN MANHATTAN

George C. Sakona - Boro. Supt.

Valery Baker - Deputy Boro. Supt.

David Sobel - Deputy Boro. Supt.

Frank Marchiano - Borough Manager

Al Curcio - Chief Plan Examiner

Mike Lattari - Admin. Chief Inspector

John Ryan - Chief Elev. Inspector

Murray Lipstein- Chief Plumbing Inspector

DOB IN BROOKLYN

Shirley Klein - Boro. Supt.

Ralph Herman - Deputy Boro. Supt.

Sal mazzola - Borough Manager

Lecnard Messana - Admin. Chief Inspector

Norman Holl - (Man.) Chief Elev. Insp.

John Jellen - Chief Plumbing Insp.

Lawrence Ferlazzo- Chief Plan Examiner

DOB IN QUEENS

Philip E. Olin - Boro. Supt.

Paul DiNatale - Deputy Boro. Supt.

Cele Stolzenberg - Borough Supt.

Nat Lizzio - Admin. Chief Inspector

Joseph Scicluna - (Man.) Chief Elev. Insp.

John DeFelice - Chief Plumbing Inspector

DOB IN THE BRONX

Ernest W. Cocolicchio - Boro. Supt.

Satish Babbar - Deputy Boro. Supt.

Joyce Eversley - Borough Manager

Maurice Beane - Admin. Chief Inspector

Elliot Iberman - (Man.) Chief Elev. Insp.

Dexter Alper - Chief Plumbing Inspector

DOB IN STATEN ISLAND

Philip Goldstein - Boro. Supt.

Joseph Trivisonno - Deputy Boro. Supt.

Douglas Potts - Borough Manager

Edward Kirshok - Admin. Chief Inspector

Thomas Schaffer- Chief Plumbing Inspector

Nicholas Grecco - Chief Engineer

RESCINDED

**RESCINDED BY
1 RCNY 1101-01
EFFECTIVE 12/30/15**

TECHNICAL DISTRIBUTION

B.I.A.C.

Professional Architects & Engineering
Societies

Mark Leeds, Esq.
Mayor's Office of The Handicapped

David Klasfeld, Esq.
Counsel to Deputy Mayor R. Esnard

RESCINDED



**RESCINDED BY
1 RCNY 1101-01
EFFECTIVE 12/30/15**

DEPARTMENT OF BUILDINGS

**EXECUTIVE OFFICES
60 HUDSON STREET, NEW YORK, NY 10013**

**CHARLES M. SMITH, Jr., R.A., Commissioner
312-8100**

REQUIREMENT FOR BATHROOM DESIGNS:

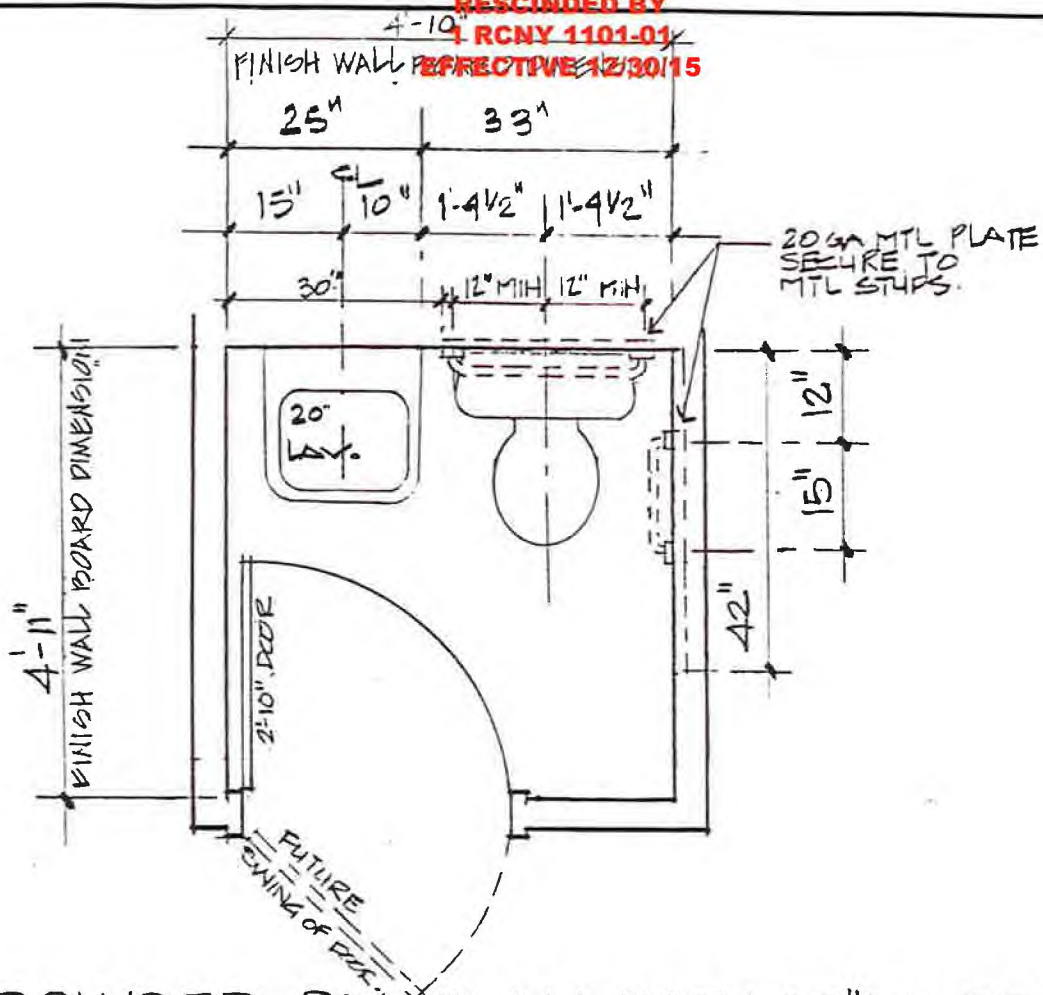
1. Designers should be sure to indicate future bathroom door outward swing and ensure that such outward swing does not obstruct wheelchair user's access from the adjacent space.
2. Indicate dimensions of grab bar re-enforcement at all required locations
3. Show finished dimensions.
4. Power Rooms:
All accepted drawings above can also be considered powder room prototypes so long as wall substituted for tub front is at finished dimension equivalent to front face of tub.

GENERAL NOTES TO BE PUT ON ALL BATHROOM DRAWINGS:

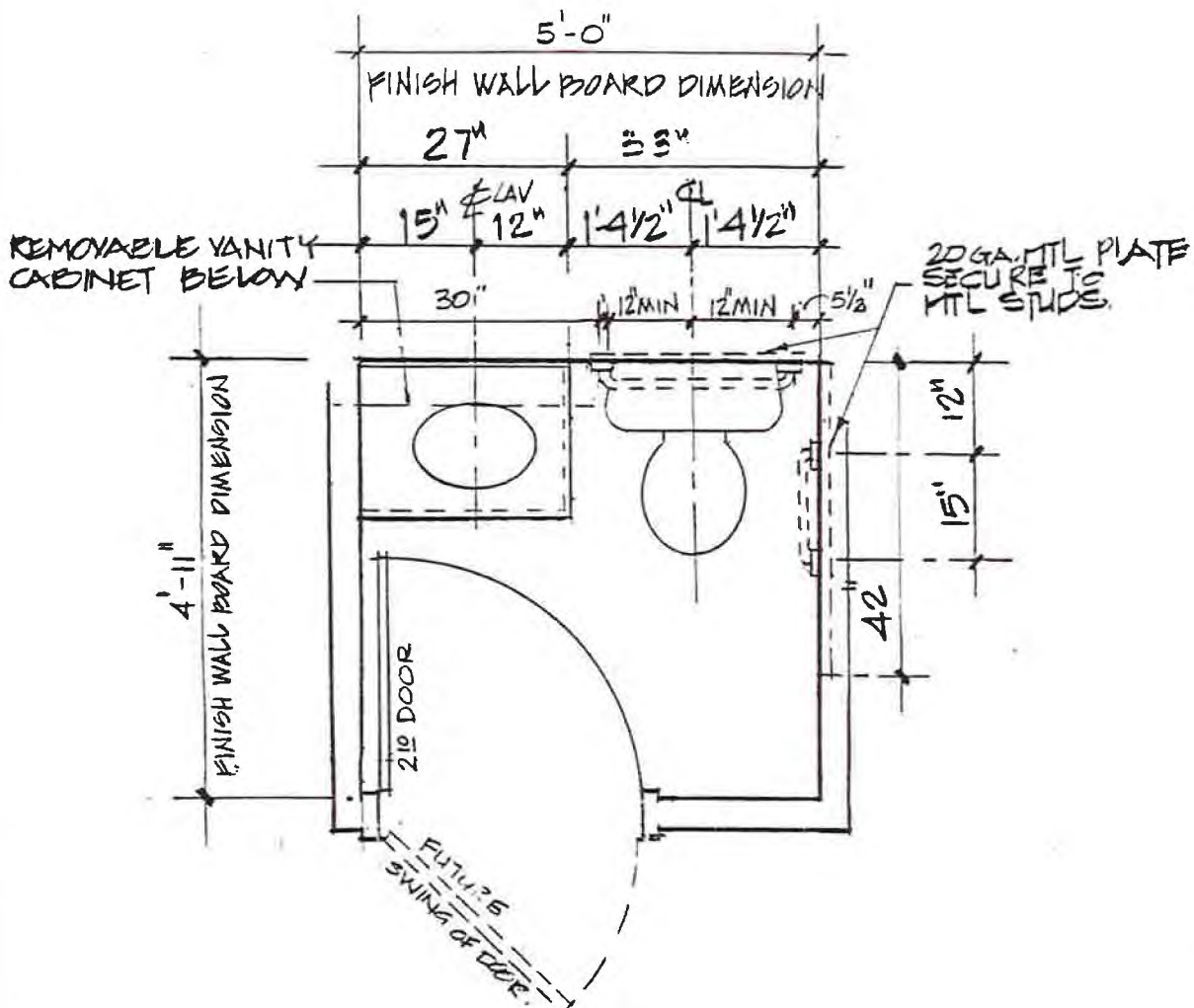
1. Future outward door swing indicated by dotted line on drawings;
2. Note on door schedule: door buck shall be provided to allow remounting of door on same frame in order to achieve alternative swing.

ALL BATHROOM PROTOTYPES ARE IN ORDER OF DISABLED PREFERENCE BY TYPE.

RESCINDED

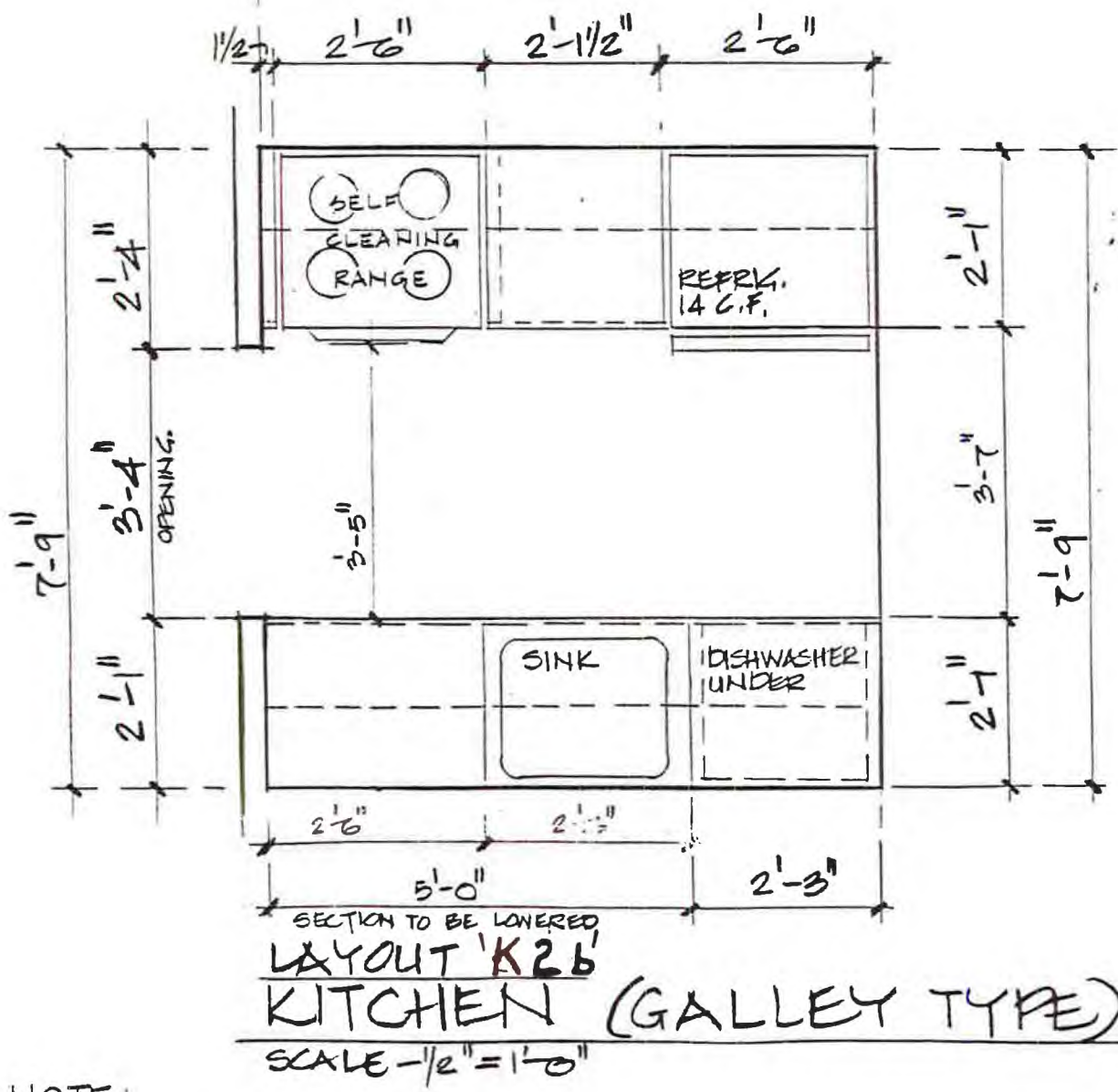
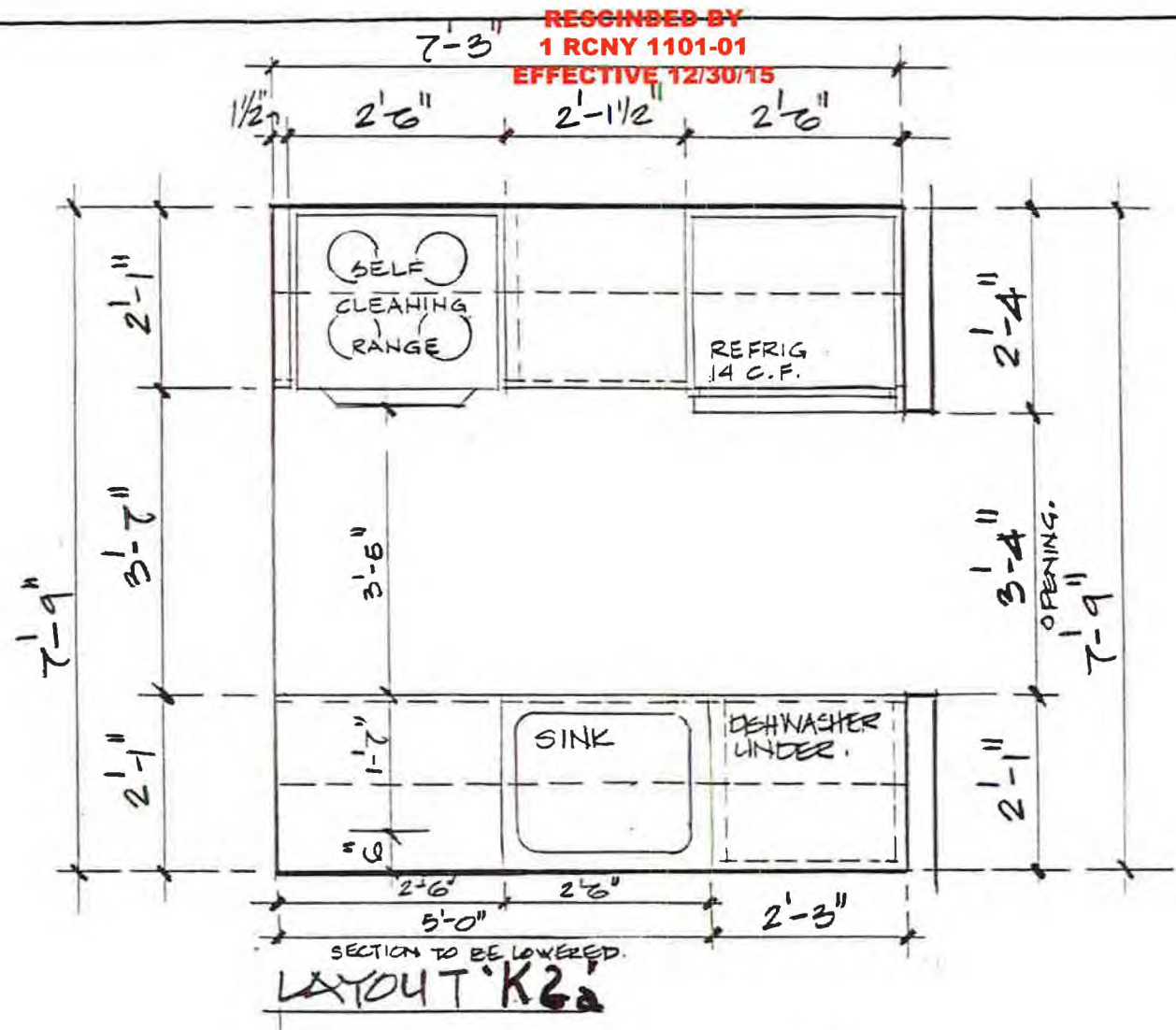


POWDER RM. PLAN WITH 20" LAVATORY
'B5a' SCALE 1/2" = 1'-0"



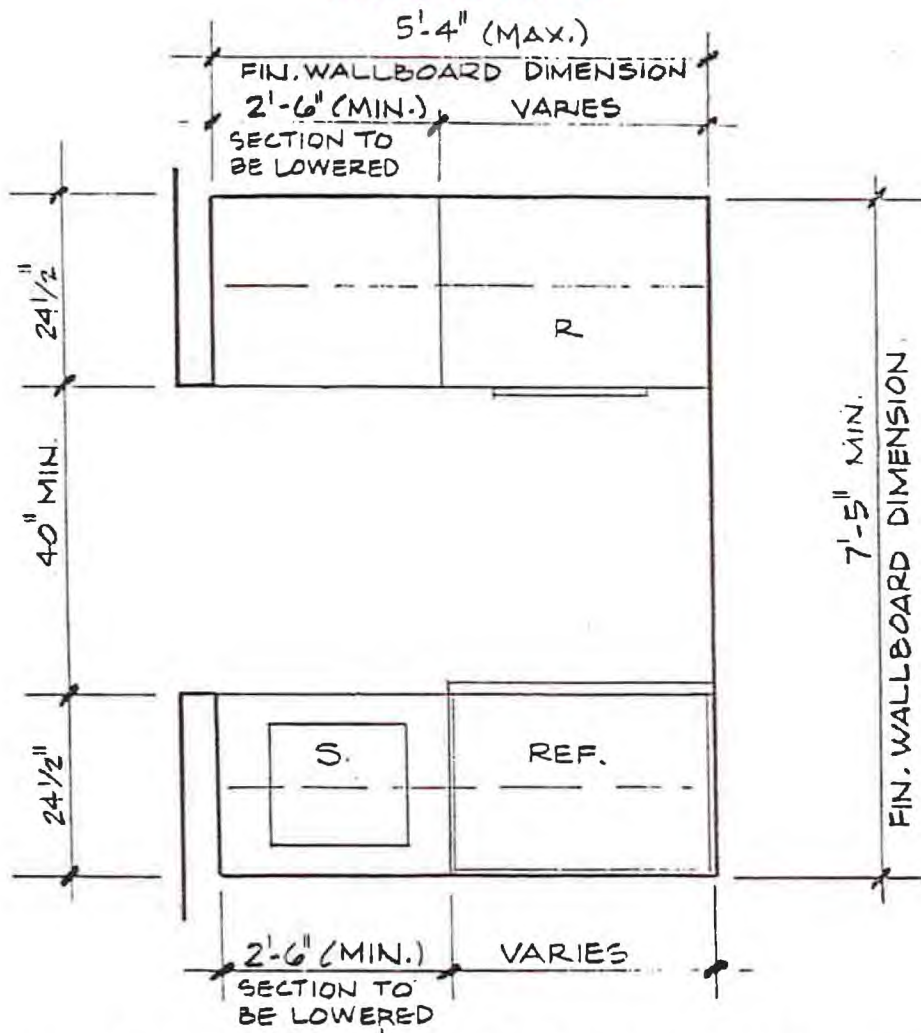
POWDER RM. PLAN WITH 27" REMOVABLE VANITY CABINET
'B5b' SCALE 1/2" = 1'-0"

RESCINDED



KITCHEN (GALLEY TYPE)
SCALE - 1/2" = 1'-0"

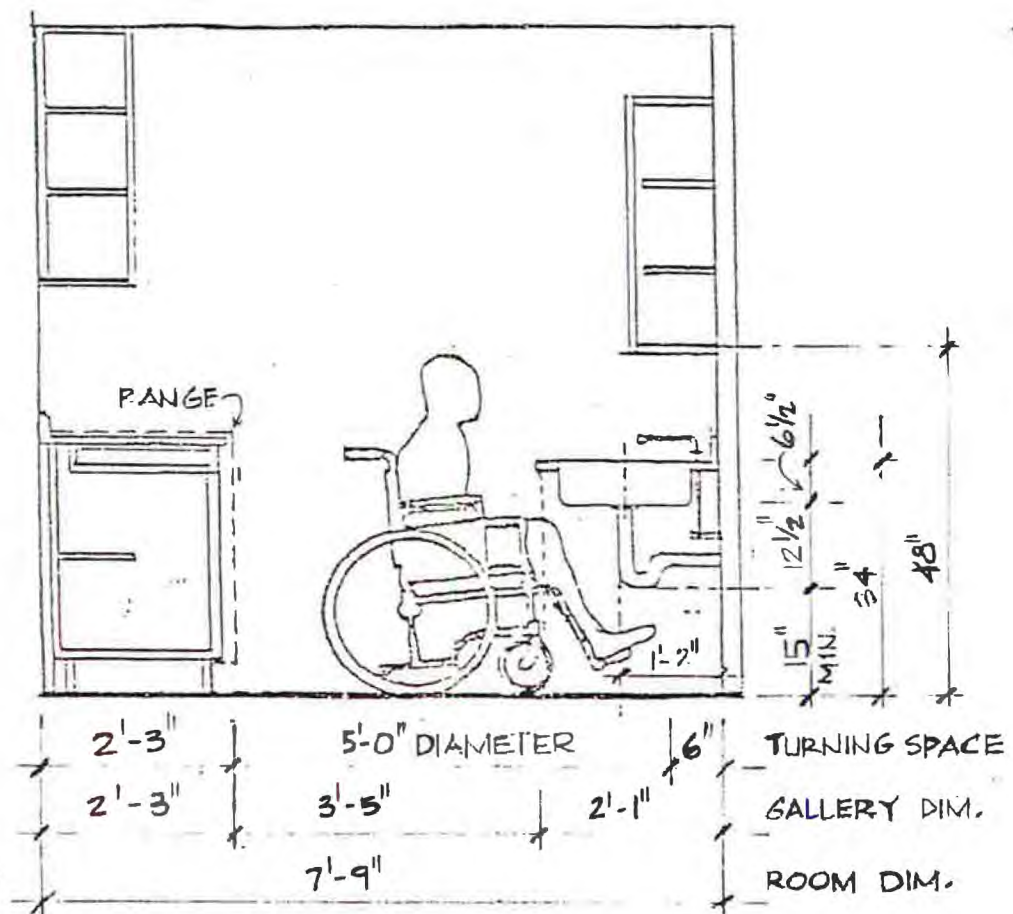
NOTE:
• REFER TO K4 - FOR REQUIRED PLUMBING CLEARANCE DIMENSIONS.



MINIMUM SIZED ADAPTABLE KITCHEN OR
KITCHENETTE 'K1'

SCALE: 1/2" = 1'-0"

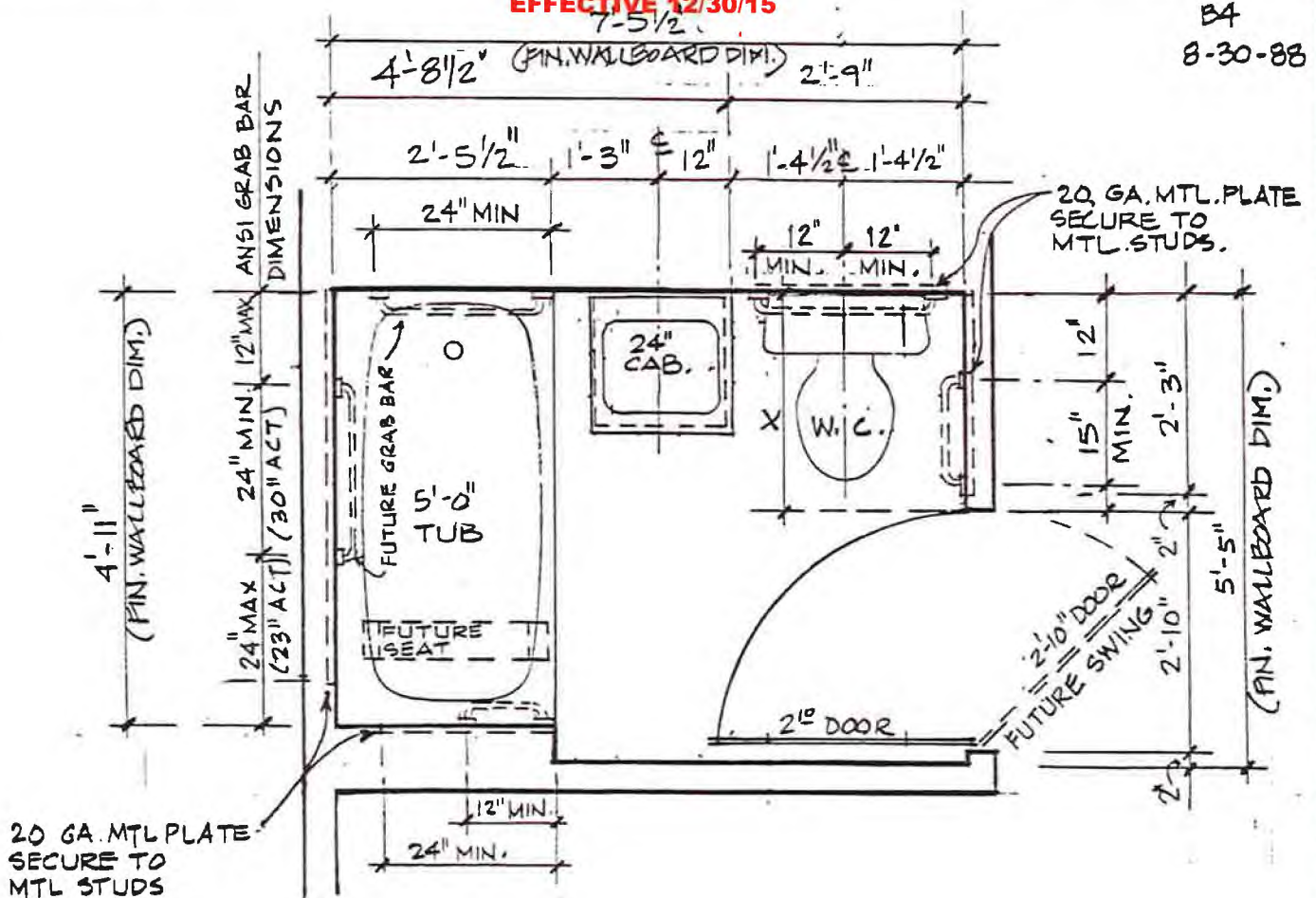
RESCINDED



RESCINDED

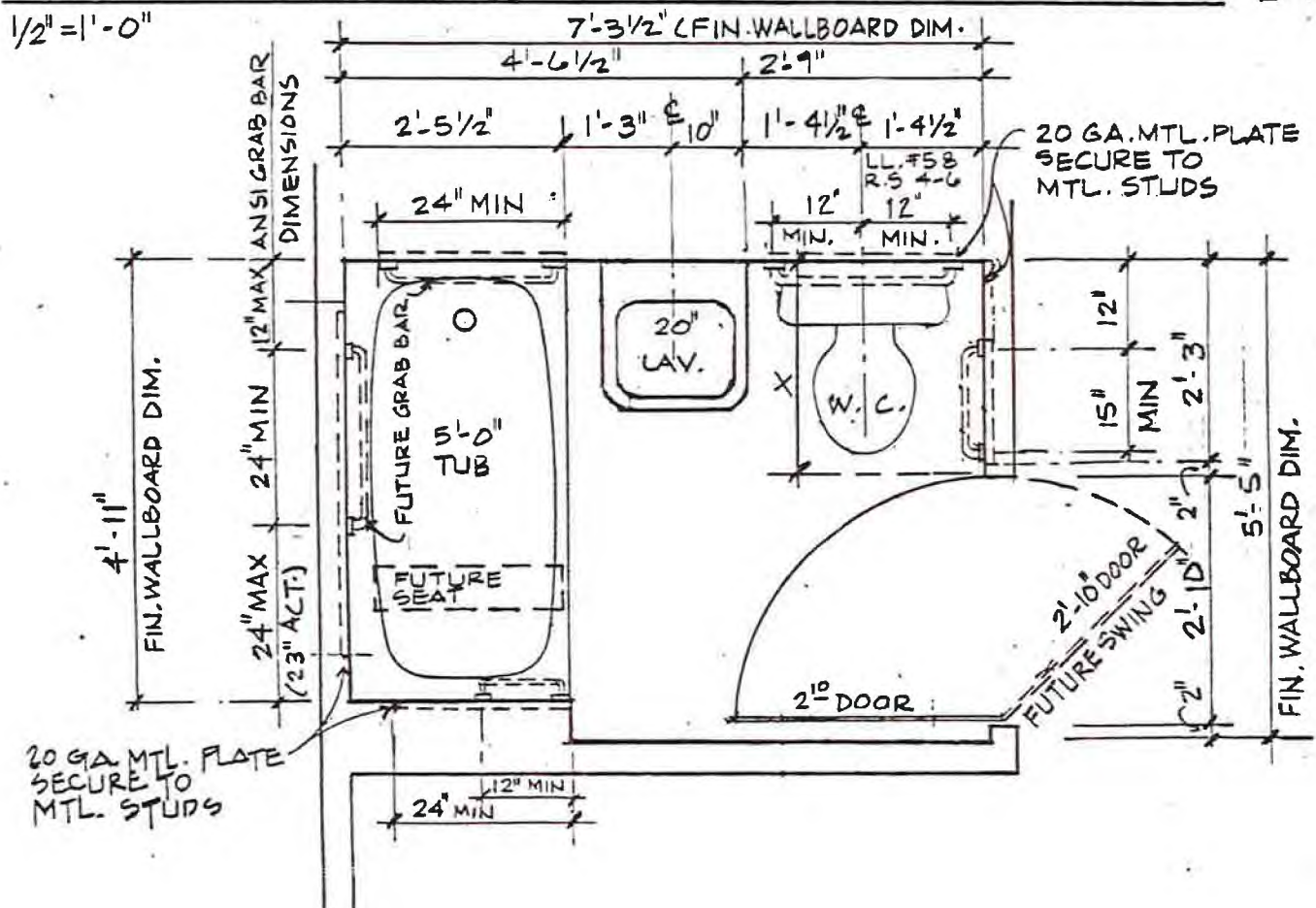
RESCINDED BY
1 RONY 1101-01
EFFECTIVE 12/30/15

B4
8-30-88



BATHROOM PLAN W/24" REMOVABLE VANITY CABINET 'B4a'

1/2" = 1'-0"

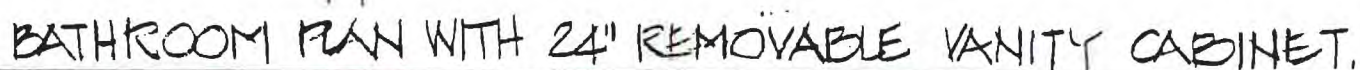
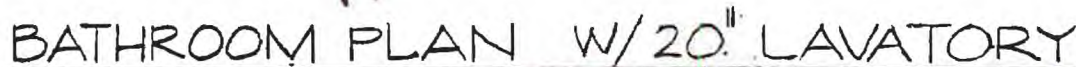


BATHROOM PLAN W/20" LAVATORY 'B4b'

1/2" = 1'-0"

X = THE OUTER EDGE OF THE WATER CLOSET WILL NOT EXTEND INTO THE CLEAR SPACE REQUIRED FROM THE DOOR OPENING.

RESCINDED


$$\frac{1}{2}'' = 1.40''$$


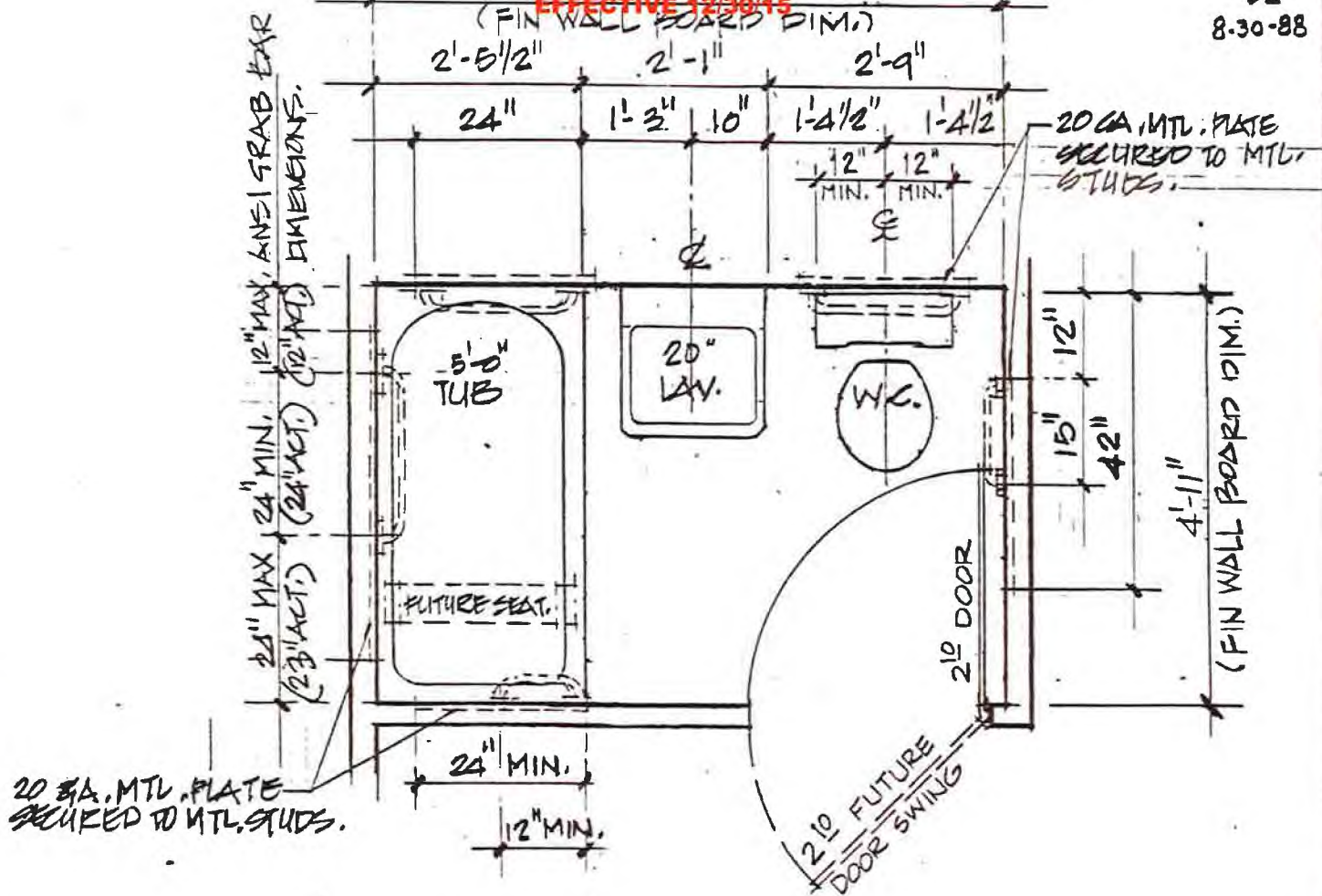
SCALE: $1/2" = 1' - 0"$

X= THE OUTER EDGE OF THE WATER CLOSET WILL NOT EXTEND INTO THE CLEAR SPACE REQUIRED FROM THE DOOR OPENING.

NOTE:

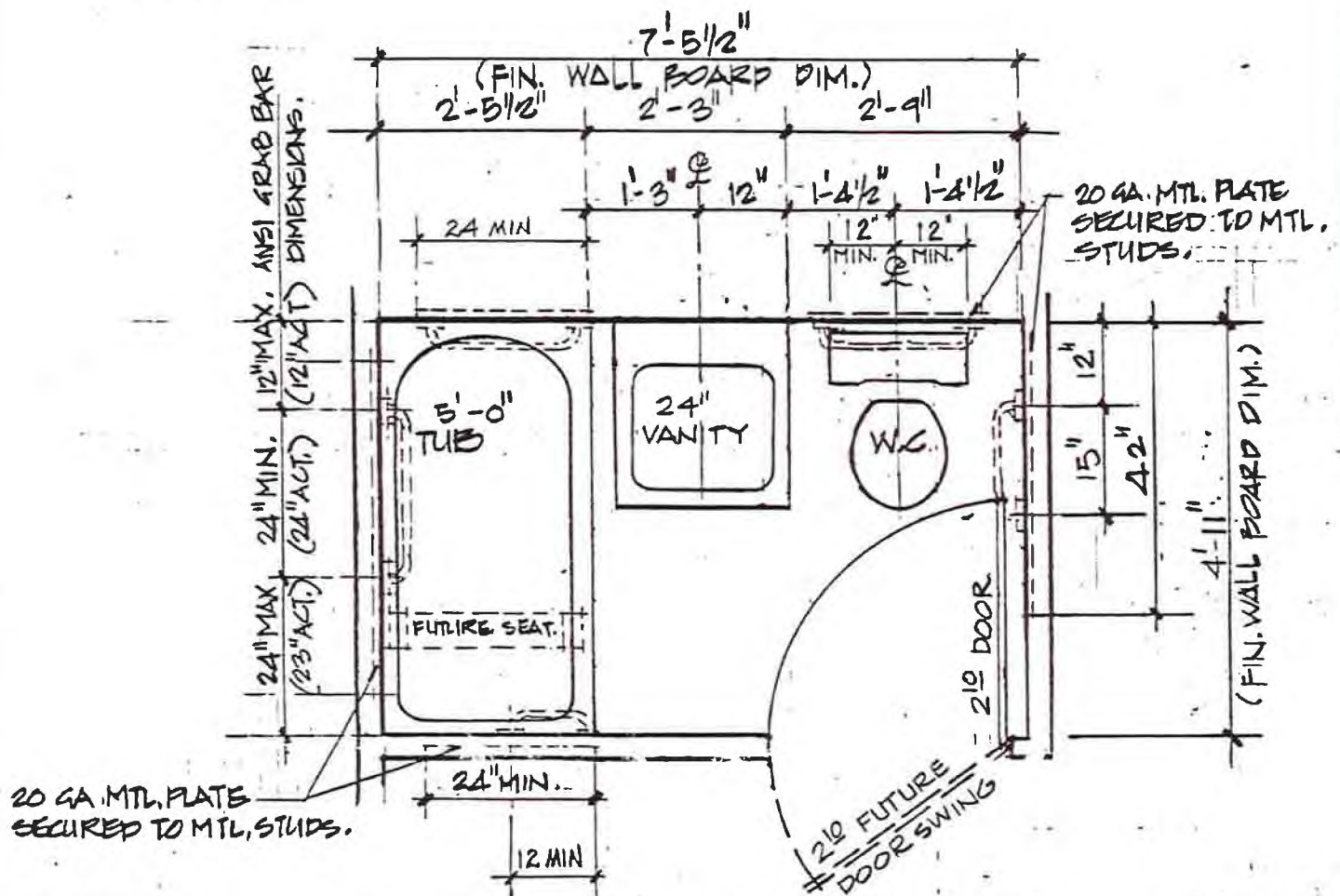
THESE LAYOUTS ARE VIEWED AS BETTER THAN THE ACCEPTABLE STANDARD BY THE DISABLED COMMUNITY.

THE DISABLED COMMUNITY RESCINDED



BATHROOM TYPE WITH 20" LAVATORY - B2a

SCALE $\frac{1}{2}'' = 1'-0''$



BATHROOM TYPE WITH 24" REMOVABLE VANITY CABINET

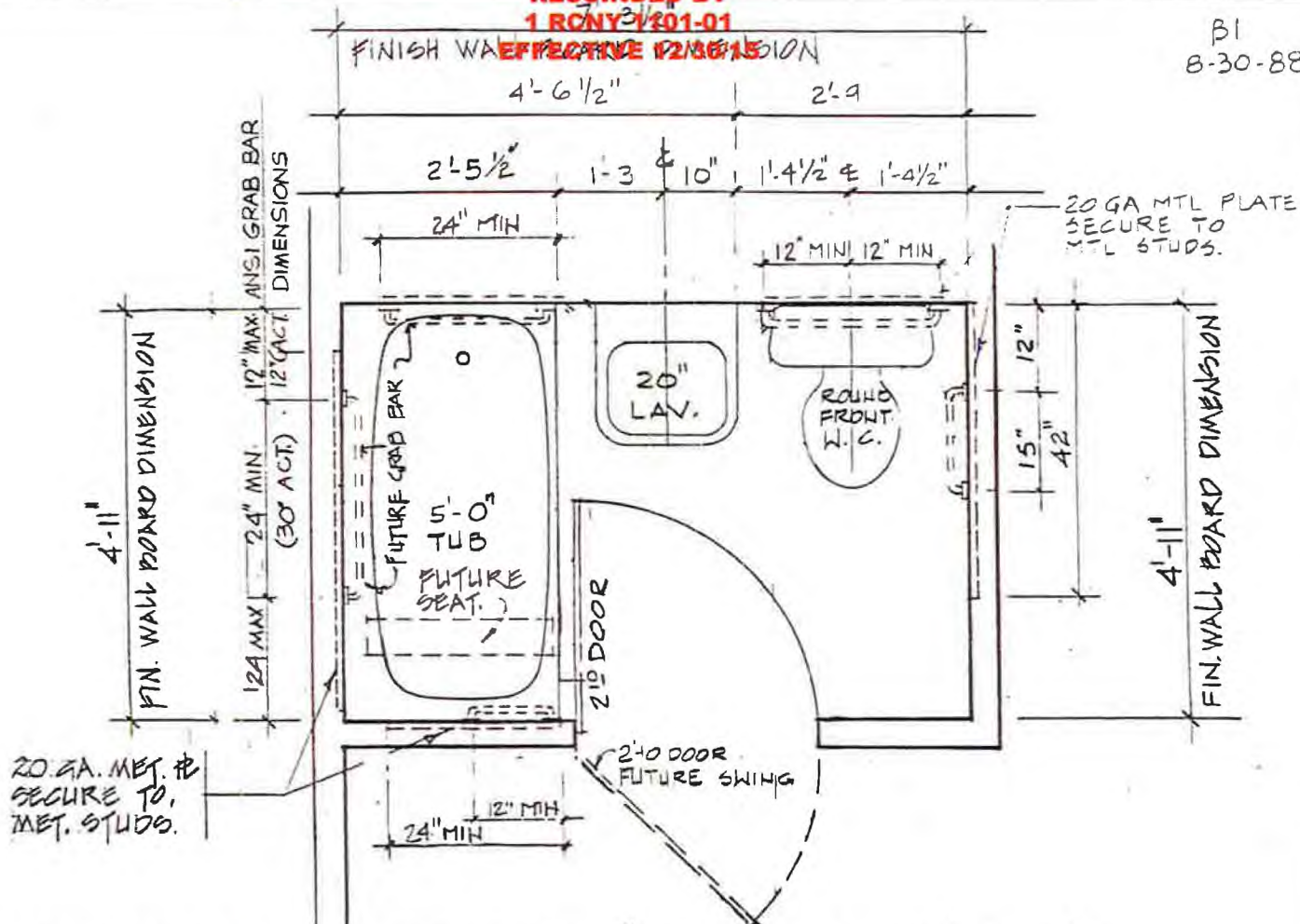
SCALE 1/2" = 1'-0"

'B2b'

RESCINDED

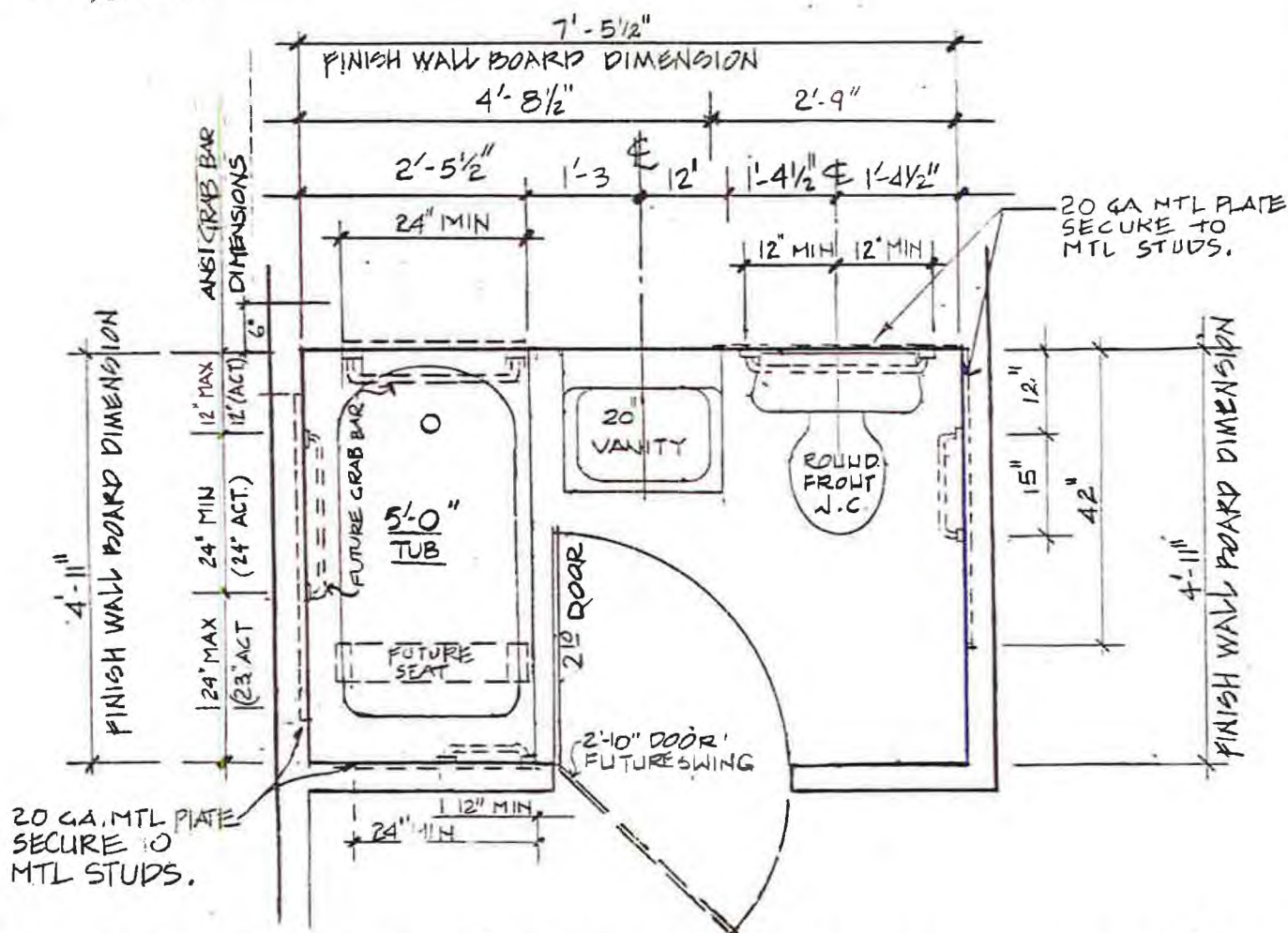
RESCINDED BY
1 RONY 3/301-01
EFFECTIVE 12/30/15

B1
8-30-88



BATHROOM PLAN W/20" LAVATORY 'B1a'

SCALE: 1/2" = 1'-0"



BATHROOM PLAN W/24" REMOVABLE VANITY CABINET 'B1b'

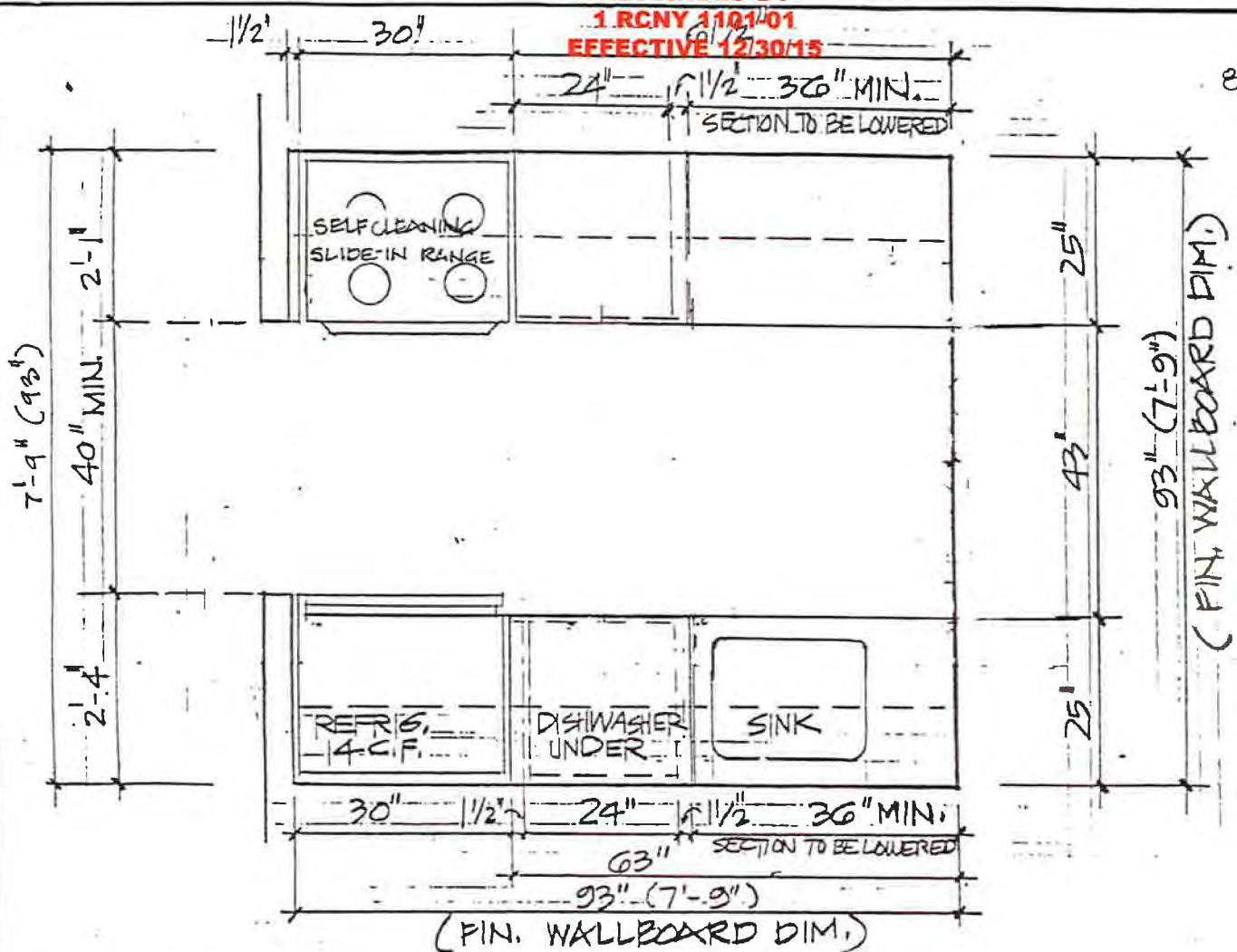
1/2" = 1'-0"

THESE LAYOUTS ARE VIEWED AS BETTER
THAN THE ACCEPTABLE STANDARD BY THE
DISABLED COMMUNITY.

RESCINDED

RESCINDED BY
1 RCNY 1101/01
EFFECTIVE 12/30/15

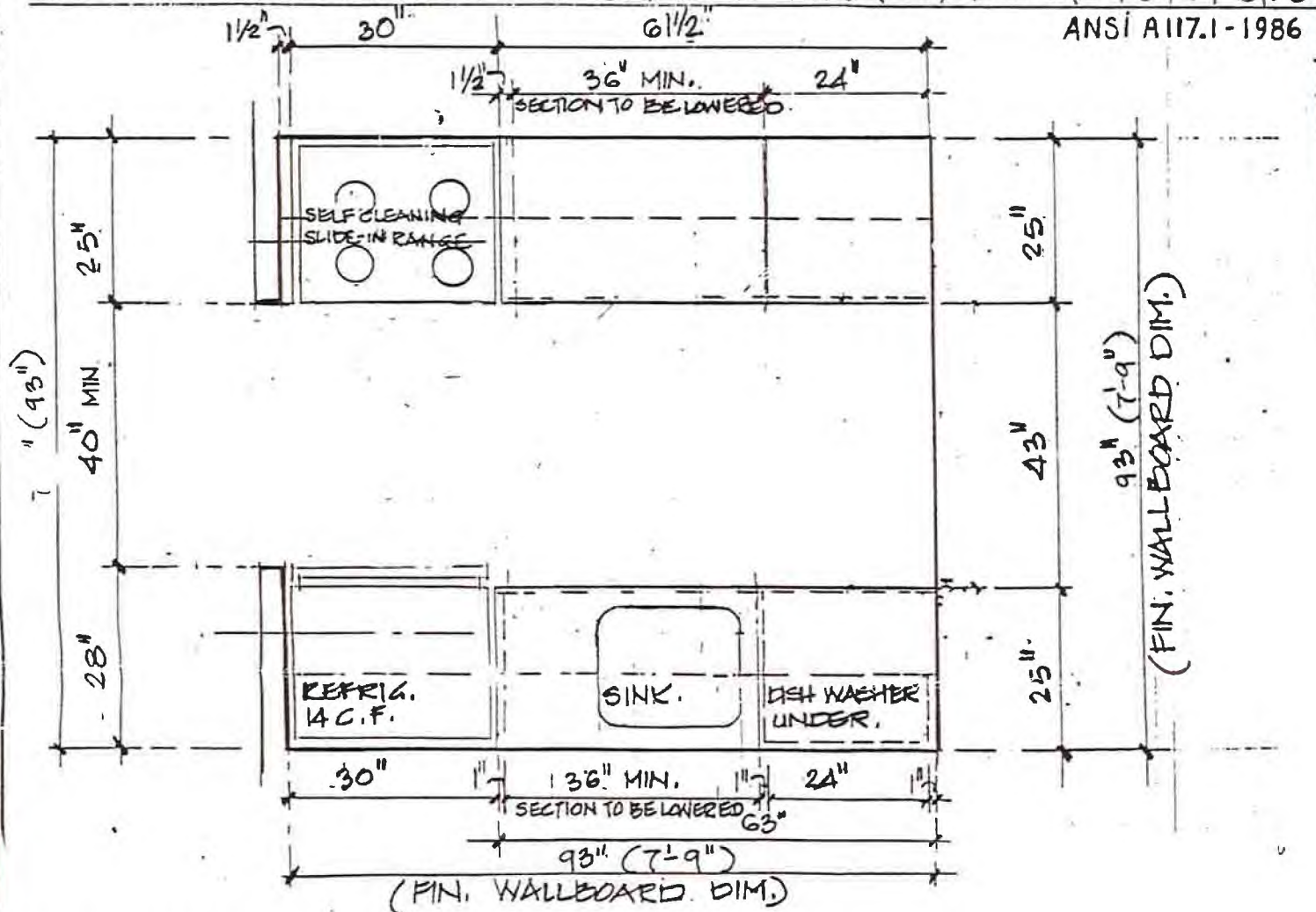
K3
8-30-88



KITCHEN (GALLEY TYPE.) 'K3a'

SCALE 1/2" = 1'-0"

SHOWING COMPLIANCE TO T-SHAPED TURN SPACE AS PER FIG. 3



KITCHEN (GALLEY TYPE.) 'K3b'

SCALE 1/2" = 1'-0"

SHOWING COMPLIANCE TO T-SHAPED TURN SPACE AS PER FIG. 3