

THE CITY OF NEW YORK  
DEPARTMENT OF BUILDINGS

DEPARTMENTAL MEMORANDUM

DATE: February 19, 1981

TO: BOROUGH SUPERINTENDENTS  
FROM: Irwin Fruchtman, P.E., Commissioner  
SUBJECT: EMERGENCY LIGHTING

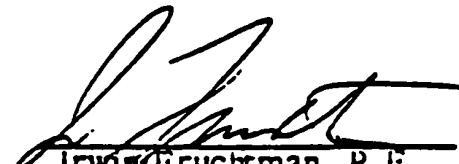
---

The enclosed sketches PA-1, PA-2, and PA-3 illustrating typical emergency lighting types and locations for representative assembly spaces shall be accepted as being in conformance with Directive No. 5/79.

Amended PA plans, accurately and neatly drawn to scale and completely dimensioned to reflect the layout of the specific premises and location of the lighting in conformance with the enclosed illustrative sketches, can be filed by the owner.

Reinspections of premises where lighting was previously installed disclosing substantive deviations from the enclosures (whether or not pursuant to representations by architects or engineers that the observed layout conforms with law) are to result in violations being issued, requiring such additional lighting as necessary to bring the premises into compliance with the level of illumination required. However, no summonses, shall be issued from this violation during 1981, nor shall issuance of this violation in and of itself be the basis for denial of a PA permit during 1981.

Copies of the enclosures are to be given to all proprietors at the time of inspection, together with a copy of this memorandum, if a violation is warranted.

  
Irwin Fruchtman, P.E.  
Commissioner

cc:  
Deputy Commissioner Minkin  
Deputy Commissioner Parascandola  
Assistant Commissioner Dennis  
Executive Staff  
BIAC  
File

1758



**DEPARTMENT OF BUILDINGS**

**EXECUTIVE OFFICES**  
120 WALL STREET, NEW YORK, N.Y. 10005

IRWIN FRUCHTMAN, P.E. Commissioner

**PUBLIC ASSEMBLY DIVISION**  
CHARLES GEORGE - SUPERVISOR - 643 7812

**REQUIREMENTS FOR EMERGENCY LIGHTING**

- 1) ARCHITECT TO AMEND P.A. PLAN TO SHOW WHERE UNITS ARE TO BE INSTALLED.
- 2) LICENSED ELECTRICIAN TO INSTALL UNITS WHERE INDICATED ON PLAN.
- 3) ELECTRICIAN TO OBTAIN CERTIFICATION FROM THE N.Y.C. ELECTRIC DEPARTMENT THAT UNITS COMPLY WITH ELECTRIC CODE.

OR

LICENSED ELECTRICIAN SUBMITS A LETTER STATING:

- 1) UNITS COMPLY WITH N.Y.C. ELECTRIC CODE
- 2) UNITS COMPLY WITH LOCAL LAW 41/78
- 3) PUTS HIS LICENSE # ON LETTER
- 4) HAS LETTER NOTORIZED

**BORO OFFICES:**

**MANHATTAN**  
MUNICIPAL BUILDING  
NEW YORK, N.Y. 10007

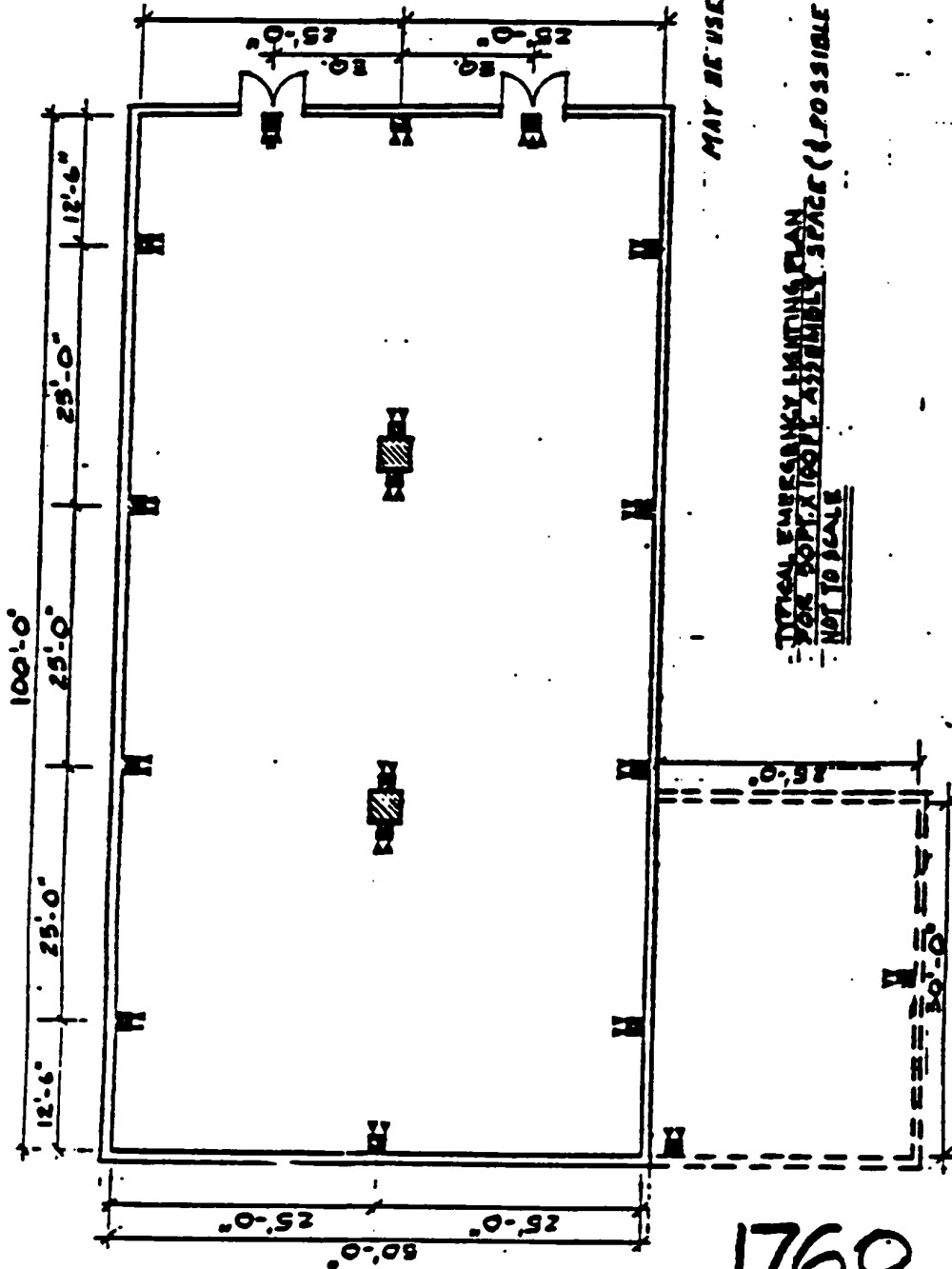
**BRONX**  
1932 ARTHUR AVENUE  
BRONX, N.Y. 10457

**BROOKLYN**  
MUNICIPAL BUILDING  
BROOKLYN, N.Y. 11201  
FLOOR 811

**QUEENS**  
120-06 QUEENS BLVD  
NEW GARDENS, N.Y. 11418

**STATEN ISLAND**  
GARDEN HALL  
57 GEORGE ST. N.Y. 10314

175c



**NOTES:**

1. ALL BATTERY PACK-LIGHT ALARM IS VOLTS WITH 25 WATT LAMPS
2. ALL BATTERY PACKS TO BE MOUNTED 6'-0" ABOVE FINISH FLOOR MINIMUM
3. ALL DIMENSIONS SHOWN ARE PLUS OR MINUS
4. ALL BATTERY PACKS OVER SIXT DOORS TO HAVE THESE (3) LAMPS EACH.
5. ALL OTHER BATTERY PACKS TO HAVE TWO (2) LAMPS EACH.

**KEY:**

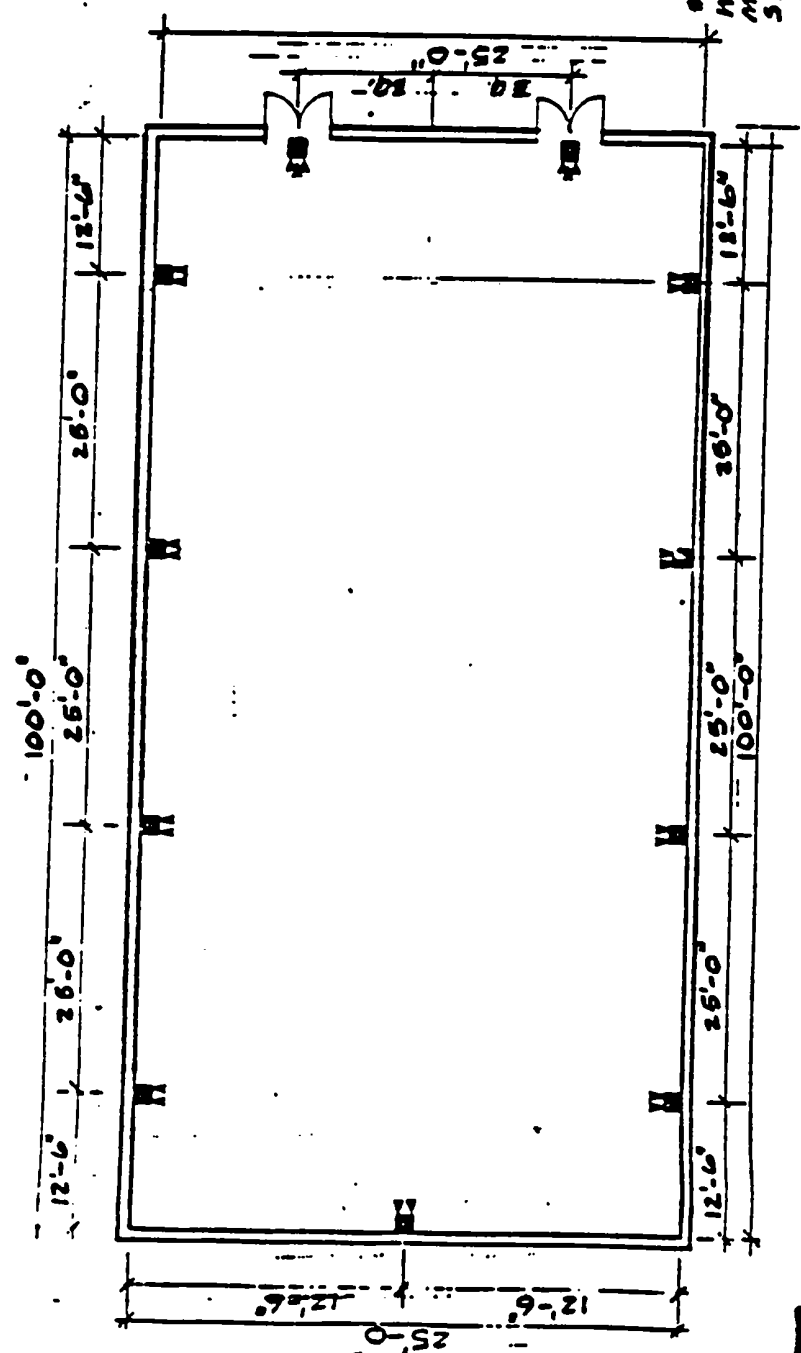
- BATTERY PACK - 5 LAMPS
- SEE DETAIL (A)
- BATTERY PACK - 3 LAMPS
- SEE DETAIL (B)

ALTERNATELY, LAMPS WITH WATTAGES OF 12 OR GREATER MAY BE USED PROVIDED THE SPECIFIED CANDLEPOWER IS 800

TYPICAL EMERGENCY LIGHTING PLAN FOR BATTERY ASSEMBLY SPACE (IF POSSIBLE ALONG) NOT TO SCALE

DEPT. OF BUILDINGS  
STANDARD  
PA-1

1760



NOTES:

1. ALL BATTERY PACKS-LIGHT ALARM 12 VOLTS WITH 25 WATT LAMPS.
2. ALL BATTERY PACKS TO BE MOUNTED 8'-0" ABOVE FINISH FLOOR MINIMUM.
3. ALL DIMENSIONS SHOWN ARE PLUS OR MINUS.
4. ALL BATTERY PACKS OVER EXIT DOORS TO HAVE THREE (3) LAMPS EACH.
5. ALL OTHER BATTERY PACKS TO HAVE TWO (2) LAMPS EACH.

KEY:

B BATTERY PACK- 2 LAMPS  
 SEE DETAIL (A)

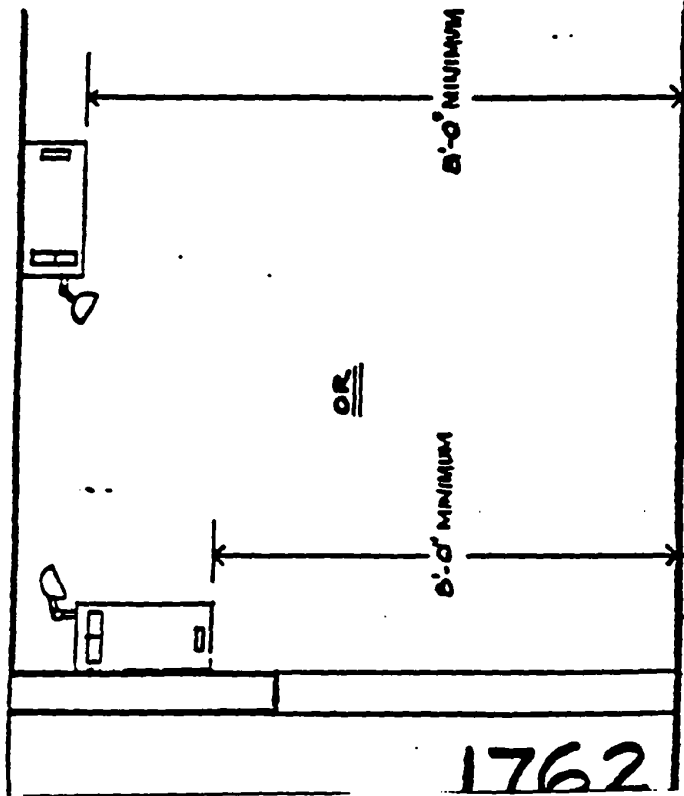
B BATTERY PACK- 3 LAMPS  
 SEE DETAIL (B)

6. ALTERNATELY LAMPS WITH WATTAGES OF 12 OR GREATER MAY BE USED PROVIDED THE SPECIFIED CANDLEPOWER 3800

TYPICAL EMERGENCY LIGHTING PLAN  
 FOR 25 FT X 100 FT ASSEMBLY SPACE  
 NOT TO SCALE

DEPT. OF BUILDINGS  
 STANDARD  
 PA-23

1761

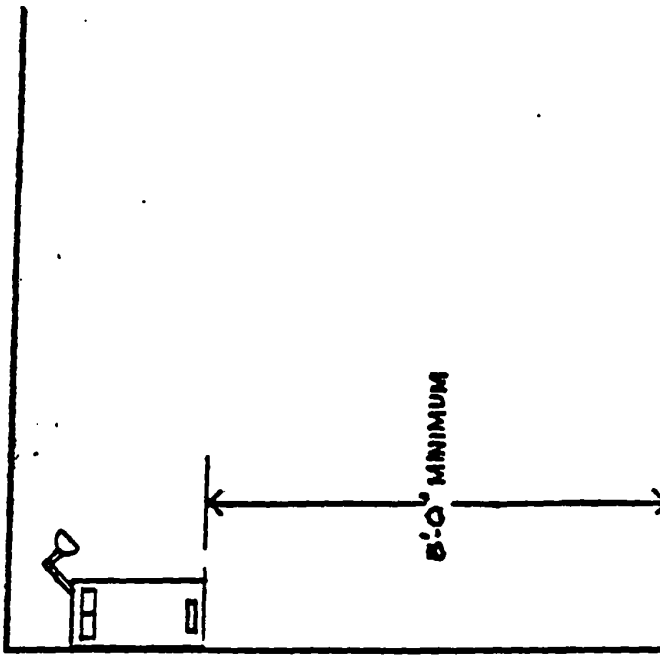


DIRECTED TOWARDS FLOOR

DETAIL (B)

NOT TO SCALE

CRILING MONITOR  
DIRECTED TOWARDS EXIT



DETAIL (A)

DIRECTED TOWARDS ABLES  
NOT TO SCALE

DEPT. OF BUILDINGS  
STANDARDS  
PA-3

1762