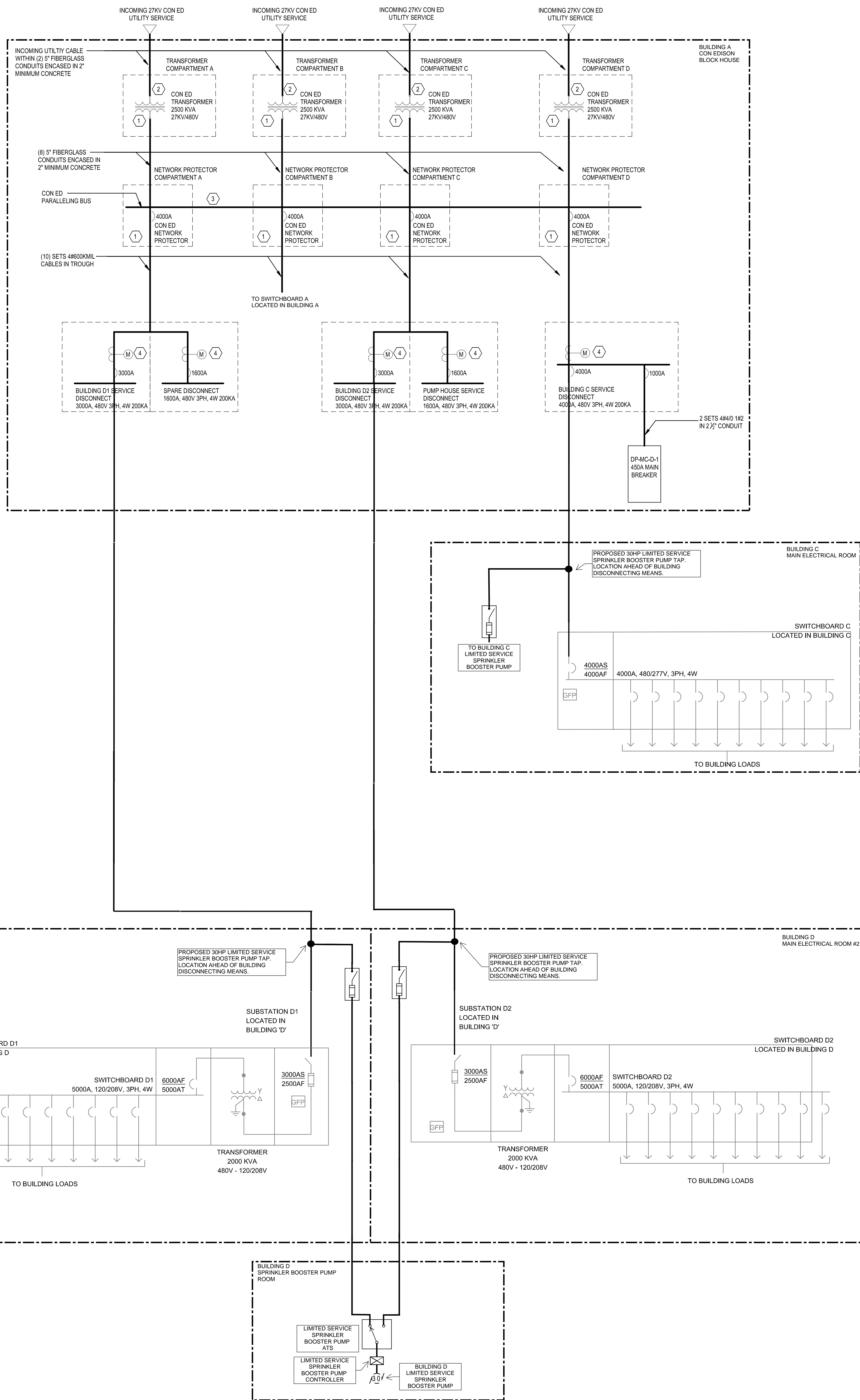
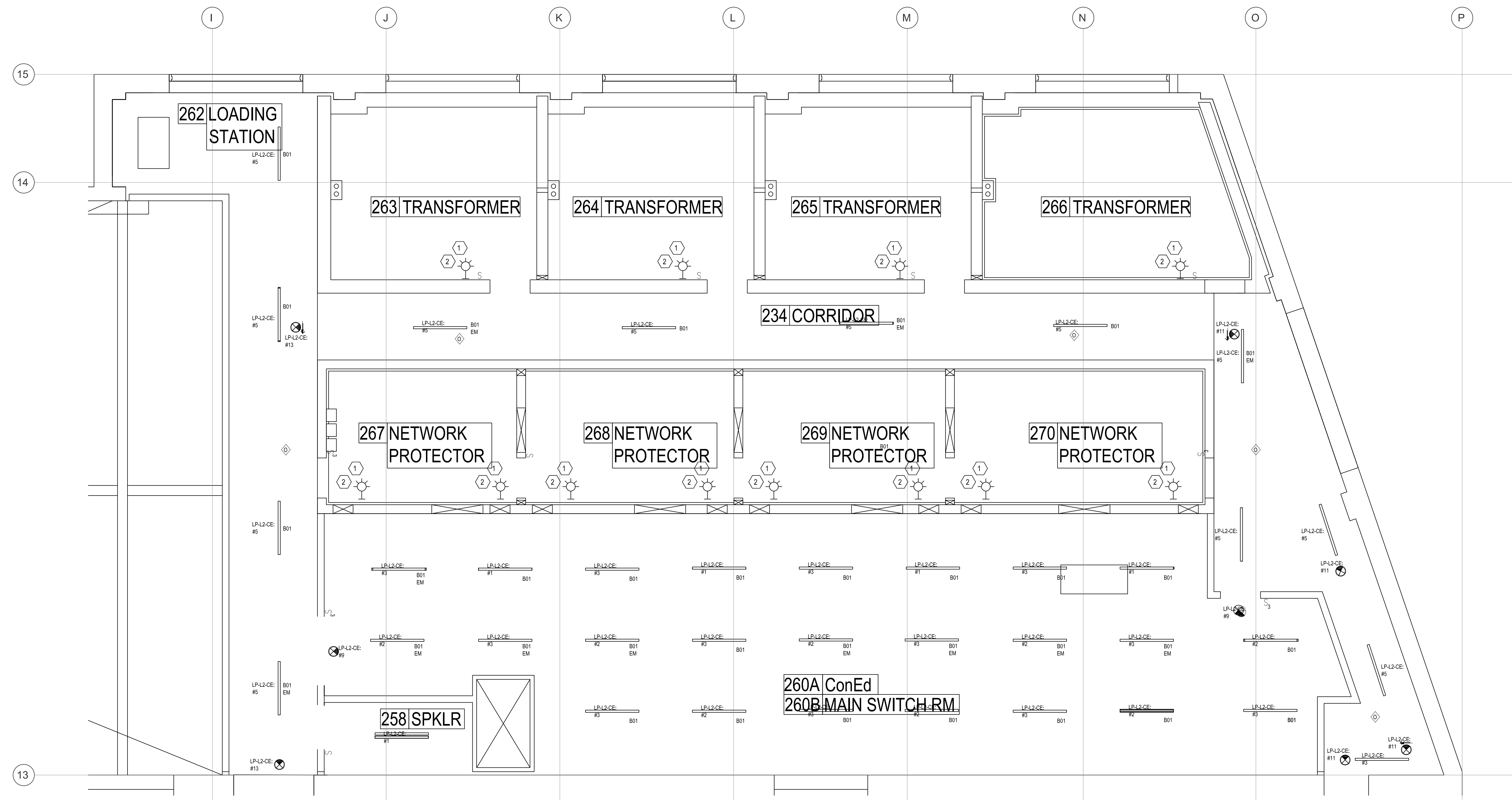


(X) KEY NOTE LEGEND

1. EQUIPMENT FURNISHED BY CON EDISON, CONTRACTOR INSTALLED.
2. CONTRACTOR TO PROVIDE ALL TERMINATIONS OF HIGH VOLTAGE CABLES ON THE TRANSFORMERS.
3. ENGAGE A CON EDISON- QUALIFIED WELDER TO PERFORM WELDING OF NETWORK COMPARTMENT BUS WORK IN COMPLIANCE WITH CON EDISON SPECIFICATIONS.
4. CURRENT TRANSFORMERS FOR METERING PURPOSES TO BE FURNISHED BY CON EDISON, CONTRACTOR INSTALLED.





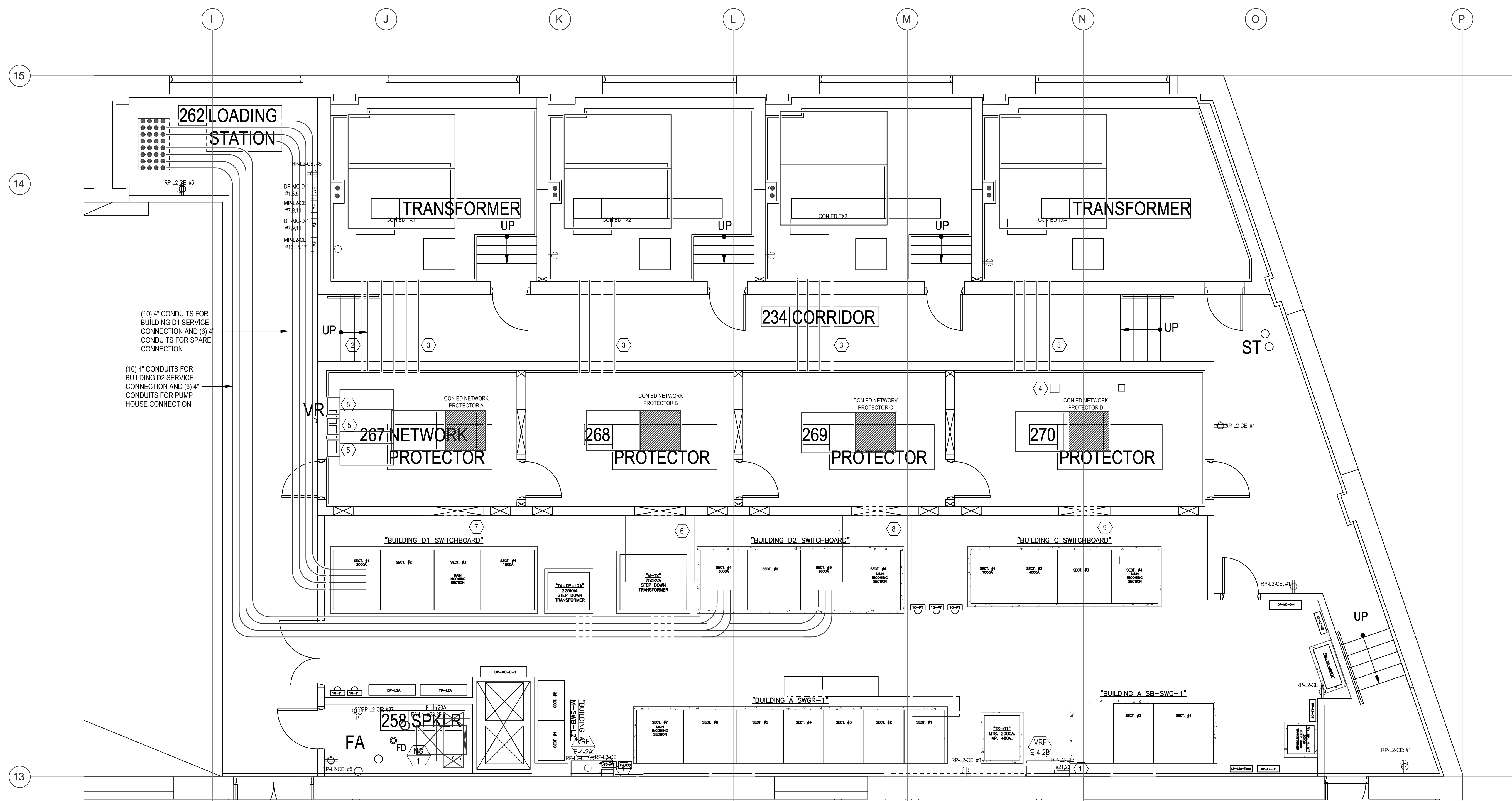
1 2ND FLOOR CON ED SPACE - LIGHTING  
1/4" = 1'-0"

#### GENERAL SHEET NOTES

- FOR SYMBOLS & ABBREVIATIONS REFER TO E-001.00
- FOR GENERAL ELECTRICAL NOTES REFER TO E-002.00
- REFER TO E-004.00 FOR BACK OF HOUSE LIGHTING SCHEDULES
- REFER TO E-005.00 AND E-006.00 FOR FRONT OF HOUSE LIGHTING SCHEDULES
- REFER TO E-007.00 FOR FRONT OF HOUSE LIGHTING CONTROL NARRATIVE
- REFER TO ARCHITECTURAL INTERIOR RCP, ELEVATIONS AND LIGHTING DETAILS FOR DETAILS AND MOUNTING HEIGHTS OF SUSPENDED LIGHT FIXTURES IN FRONT OF HOUSE AREAS
- COORDINATE LOCATION OF LIGHTING CONTROL DEVICES WITH FURNITURE AND EQUIPMENT LAYOUTS
- LOCATION OF BACK OF HOUSE FIXTURES IS APPROXIMATE. COORDINATE FINAL POSITIONS IN THE FIELD
- COORDINATE CONDUIT ROUTING WITH FIELD CONDITIONS AND THE WORK OF OTHER TRADES
- EMERGENCY LIGHTING ON EGRESS ROUTES TO BE 2FC AVERAGE.
- EGRESS STAIR LIGHTING TO BE 100% EMERGENCY.

#### (X) LIGHTING KEY NOTE LEGEND

- LIGHTING WITHIN CON EDISON NETWORK PROTECTOR AND TRANSFORMER ROOMS CIRCUITED FROM 3.33kVA AUTOTRANSFORMERS WITHIN NETWORK PROTECTOR ROOM A.
- LIGHTING WITHIN CON EDISON IS WALL MOUNTED JELLY JAR, PER CON ED REQUIREMENTS, NO LIGHTING TO BE CEILING MOUNTED ABOVE EQUIPMENT.



2 2ND FLOOR CON ED SPACE - POWER  
1/4" = 1'-0"

#### GENERAL SHEET NOTES

- FOR SYMBOLS & ABBREVIATIONS REFER TO E-001.00
- FOR GENERAL ELECTRICAL NOTES REFER TO E-002.00
- COORDINATE CONDUIT ROUTING WITH FIELD CONDITIONS AND THE WORK OF OTHER TRADES
- CONDUITS SHOWN FOR PRIMARY CONDUIT ROUTING ONLY. BRANCH WIRING FOR SMALL POWER NOT BE SHOWN. BRANCH WIRING CONDUIT TO BE FIELD COORDINATED.
- EXTERNAL POWER ACCESSORIES TO BE WEATHERPROOF
- ALL CONDUITS FOR OUTSIDE TO BE SEALED TO PREVENT WATER INGRESS

#### (X) POWER KEY NOTE LEGEND

- DISCONNECT FOR EACH VRF UNIT PROVIDED BY DIVISION 23 CONTRACTOR. DIVISION 28 CONTRACTOR TO INSTALL BRANCH CIRCUIT WIRING AND ASSOCIATED CONDUIT TO EACH UNIT. MAKE FINAL CONNECTION SWITCHED DISCONNECT FOR EACH UNIT. COORDINATE WITH DIVISION 23 CONTRACTOR FOR FINAL LOCATIONS OF EACH DISCONNECT UNIT.
- LTG & PWE 1-5" FIBERGLASS CONDUITS ENCASED IN CONCRETE PER CON EDISON DRAWING 607374-0
- 8'-5" (4 X 2 ARRANGEMENT) FIBERGLASS CONDUITS ENCASED IN CONCRETE PER CON EDISON DRAWING 607374-0, 0'-10" CENTER TO CENTER VERTICAL SPACING. 3'-0" AFFL TO CENTERLINE OF UPPER CONDUIT.
- GROUNDING PLATE PER CON EDISON DRAWING 607376. 6" X 1/2" STEEL PLATE W/ (2) 7/16" DIA. HOLES 1-1/8" O.C. EXTENDED 4" INTO NETWORK PROTECTOR COMPARTMENT C WELDED TO REINFORCEMENT BARS. RESISTANCE TO GROUND TO BE 10 OHMS OR LESS. ADDITIONAL PLATES TO BE PROVIDED IF MEASUREMENT ABOVE 10 OHMS IS RECORDED.
- 3.33kVA AUTOTRANSFORMER FOR LIGHTING AND SMALL POWER WITHIN CON EDISON NETWORK PROTECTOR AND TRANSFORMER ROOMS. AUTOTRANSFORMER FURNISHED BY CON EDISON, CONTRACTOR INSTALLED.
- CABLE CONNECTION FROM CON EDISON NETWORK PROTECTOR ROOM TO BUILDING A MAIN SERVICE. (10) SETS 600KCMIL CABLE IN 4" CONDUIT.
- CABLE CONNECTION FROM CON EDISON NETWORK PROTECTOR ROOM TO BUILDING D1 SERVICE SWITCHBOARD. (10) SETS 600KCMIL CABLE VIA CROWN BOX.
- CABLE CONNECTION FROM CON EDISON NETWORK PROTECTOR ROOM TO BUILDING D2 SERVICE SWITCHBOARD. (10) SETS 600KCMIL CABLE VIA CROWN BOX.
- CABLE CONNECTION FROM CON EDISON NETWORK PROTECTOR ROOM TO BUILDING C SERVICE SWITCHBOARD. (10) SETS 600KCMIL CABLE VIA CROWN BOX.