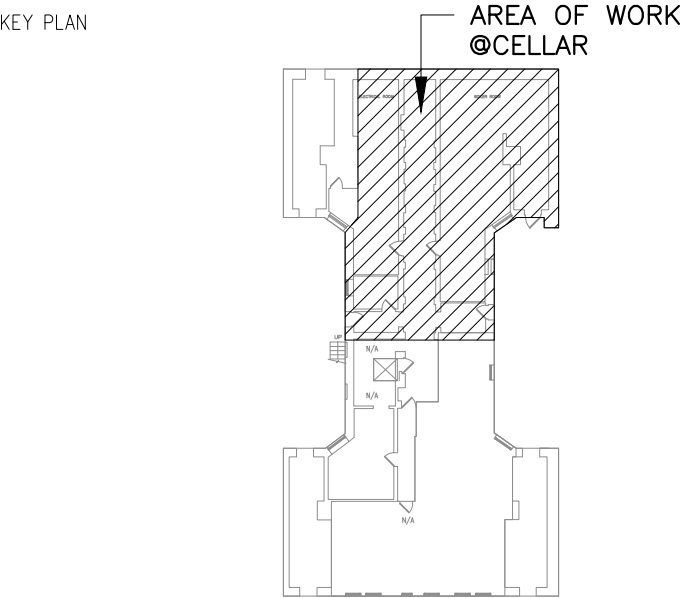


- ELECTRICAL LEGENDS:** #
1. SERVICE END BOX CON-ED SPEC EO-9525-B.
  2. 1000AF/1200AS SERVICE SWITCH(SS#1) FOR APARTMENTS.
  3. 250AF/400AS SERVICE SWITCH(SS#2) FOR BASE BUILDING.
  4. NEW METERBANK FOR APARTMENTS FOR BASE BUILDING.
  5. 150AMP HOUSE PANEL "HP-1".
  6. 100AMP HOUSE PANEL "HP-2".
  7. 20AF/30AS SERVICE SWITCH(SS#3) & METER STACKED FOR FIRE ALARM.
  8. 70AF/100AS SERVICE SWITCH(SS#4) & METER STACKED FOR SOLAR SYSTEM.

- ELECTRICAL KEYED NOTES:** #
- A. E.C TO PROVIDE AND MAINTAIN WORKING SPACE IN FRONT OF THE ELECTRICAL EQUIPMENT PER NEC 110.26. ENSURE A MINIMUM CLEARANCE OF 3 FEET IN DEPTH, 30 INCHES IN WIDTH, AND 6 FEET 6 INCHES IN HEIGHT FOR SAFE OPERATION AND MAINTENANCE.
  - B. E.C TO PROVIDE DEDICATED SPACE FOR ELECTRICAL EQUIPMENT PER NEC 110.26(E). MAINTAIN A CLEAR ZONE EQUAL TO THE WIDTH AND DEPTH OF THE EQUIPMENT, EXTENDING 6 FEET ABOVE OR TO THE STRUCTURAL CEILING, WHICHEVER IS LOWER. FOREIGN SYSTEMS SUCH AS PIPING OR DUCTS ARE PERMITTED ABOVE THIS SPACE ONLY IF PROTECTED. A DRIP PAN SHALL BE INSTALLED TO PREVENT DAMAGE FROM LEAKS OR CONDENSATION.
  - C. E.C TO INSTALL OVERCURRENT PROTECTION DEVICES PER NEC 240.24. ENSURE ACCESSIBILITY, WITH THE HIGHEST OPERATING HANDLE NOT EXCEEDING 6 FT 7 IN. ABOVE THE FLOOR OR PLATFORM.
  - D. ALL RACEWAYS, BOXES, CABINETS, AND FITTINGS INSTALLED INSIDE THE BUILDING SHALL BE PROTECTED AGAINST CORROSION PER NEC 300.6. IN INDOOR WET LOCATIONS, ENSURE A 1/4-INCH AIRSPACE BETWEEN EXPOSED WIRING SYSTEMS AND SUPPORTING SURFACES TO PREVENT MOISTURE RETENTION AND DETERIORATION.

**newyork engineers**  
**MEP ENGINEERING**  
55 BROAD STREET, 4TH FLOOR  
NEW YORK, NY 10004  
T: 212-575-5300 ny-engineers.com



PROJECT NAME

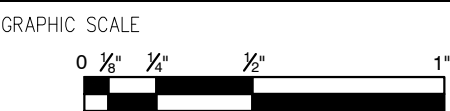
**415 WASHINGTON AVE  
BOILER REPLACEMENT**

PHYSICAL LOCATION

**415 WASHINGTON AVE,  
BROOKLYN, NY 11238**

DRAWING TITLE

**CELLAR BOILER ROOM  
ELECTRICAL POWER  
PART PLAN**



PROJECT NO. —

SCALE **AS NOTED**

DRAWN BY **NYE**

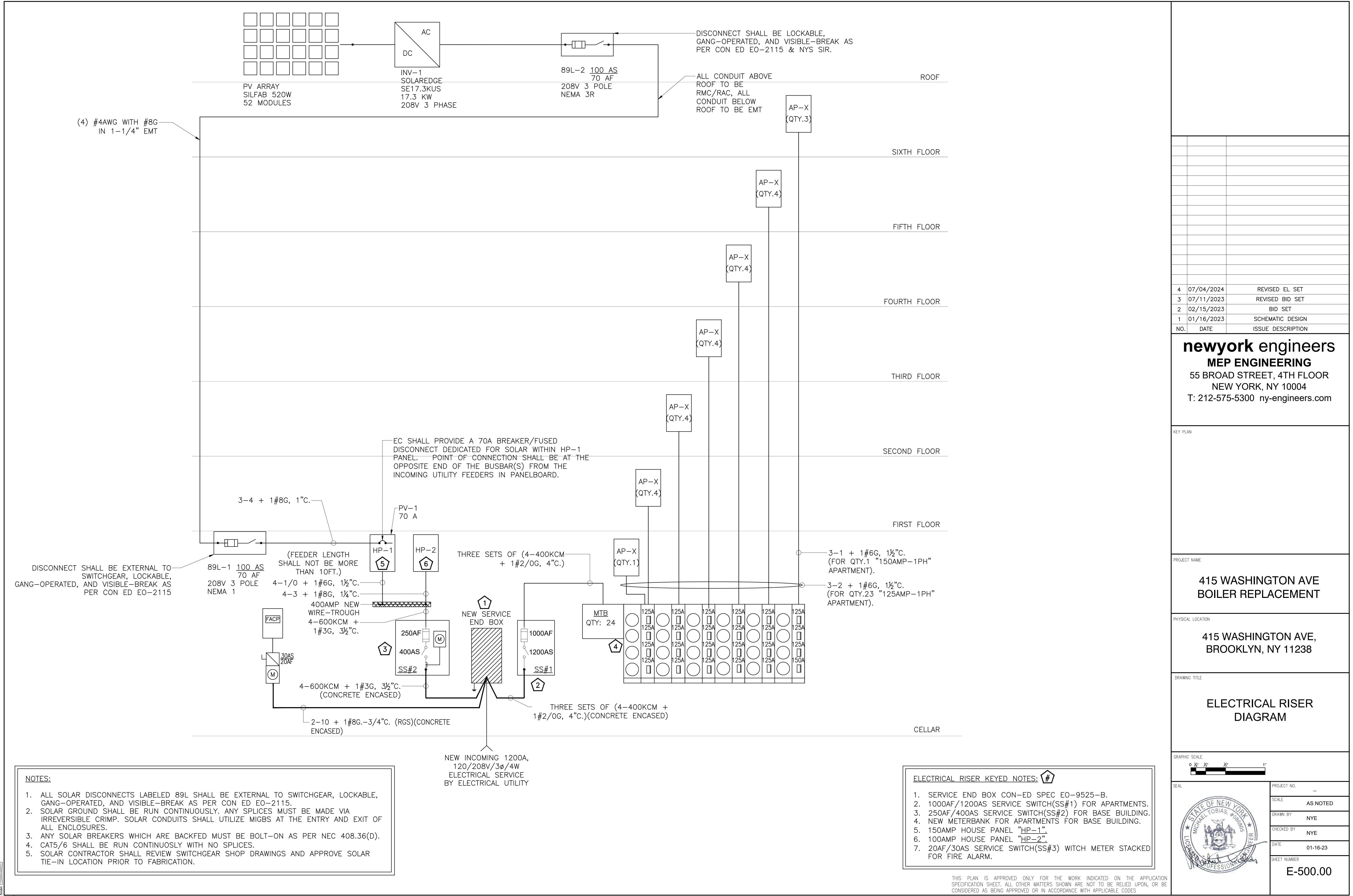
CHECKED BY **NYE**

DATE **01-16-23**

SHEET NUMBER  
**E-200.00**

**1** **CELLAR BOILER ROOM ELECTRICAL POWER PART PLAN**  
SCALE: 3/8"=1'-0"

THIS PLAN IS APPROVED ONLY FOR THE WORK INDICATED ON THE APPLICATION SPECIFICATION SHEET. ALL OTHER MATTERS SHOWN ARE NOT TO BE RELIED UPON, OR BE CONSIDERED AS BEING APPROVED OR IN ACCORDANCE WITH APPLICABLE CODES



4	07/04/2024	REVISED EL SET
3	07/11/2023	REVISED BID SET
2	02/15/2023	BID SET
1	01/16/2023	SCHEMATIC DESIGN
NO.	DATE	ISSUE DESCRIPTION

**newyork engineers**  
**MEP ENGINEERING**  
55 BROAD STREET, 4TH FLOOR  
NEW YORK, NY 10004  
T: 212-575-5300 ny-engineers.com

KEY PLAN

PROJECT NAME  
**415 WASHINGTON AVE  
BOILER REPLACEMENT**

PHYSICAL LOCATION  
**415 WASHINGTON AVE,  
BROOKLYN, NY 11238**

DRAWING TITLE  
**ELECTRICAL RISER  
DIAGRAM**

GRAPHIC SCALE  
0' 1/2' 1' 1/2' 2'

SEAL	PROJECT NO.
SCALE	AS NOTED
DRAWN BY	NYE
CHECKED BY	NYE
DATE	01-16-23
SHEET NUMBER	E-500.00

- ELECTRICAL RISER KEYED NOTES:**
- SERVICE END BOX CON-ED SPEC EO-9525-B.
  - 1000AF/1200AS SERVICE SWITCH(SS#1) FOR APARTMENTS.
  - 250AF/400AS SERVICE SWITCH(SS#2) FOR BASE BUILDING.
  - NEW METERBANK FOR APARTMENTS FOR BASE BUILDING.
  - 150AMP HOUSE PANEL "HP-1".
  - 100AMP HOUSE PANEL "HP-2".
  - 20AF/30AS SERVICE SWITCH(SS#3) WITCH METER STACKED FOR FIRE ALARM.

- NOTES:**
- ALL SOLAR DISCONNECTS LABELED 89L SHALL BE EXTERNAL TO SWITCHGEAR, LOCKABLE, GANG-OPERATED, AND VISIBLE-BREAK AS PER CON ED EO-2115.
  - SOLAR GROUND SHALL BE RUN CONTINUOUSLY. ANY SPLICES MUST BE MADE VIA IRREVERSIBLE CRIMP. SOLAR CONDUITS SHALL UTILIZE MIGBS AT THE ENTRY AND EXIT OF ALL ENCLOSURES.
  - ANY SOLAR BREAKERS WHICH ARE BACKFED MUST BE BOLT-ON AS PER NEC 408.36(D).
  - CATS/6 SHALL BE RUN CONTINUOUSLY WITH NO SPLICES.
  - SOLAR CONTRACTOR SHALL REVIEW SWITCHGEAR SHOP DRAWINGS AND APPROVE SOLAR TIE-IN LOCATION PRIOR TO FABRICATION.

THIS PLAN IS APPROVED ONLY FOR THE WORK INDICATED ON THE APPLICATION SPECIFICATION SHEET. ALL OTHER MATTERS SHOWN ARE NOT TO BE RELIED UPON, OR BE CONSIDERED AS BEING APPROVED OR IN ACCORDANCE WITH APPLICABLE CODES