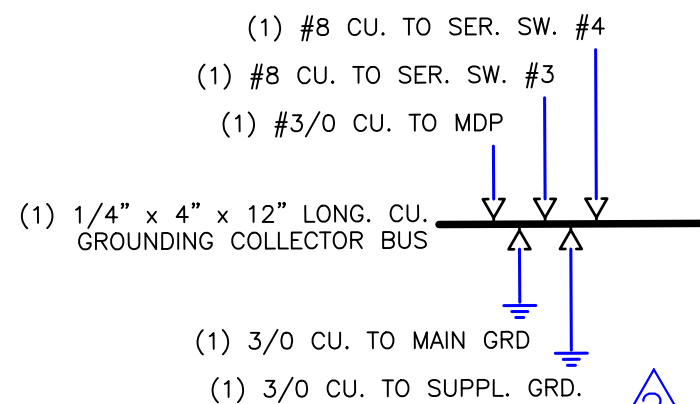


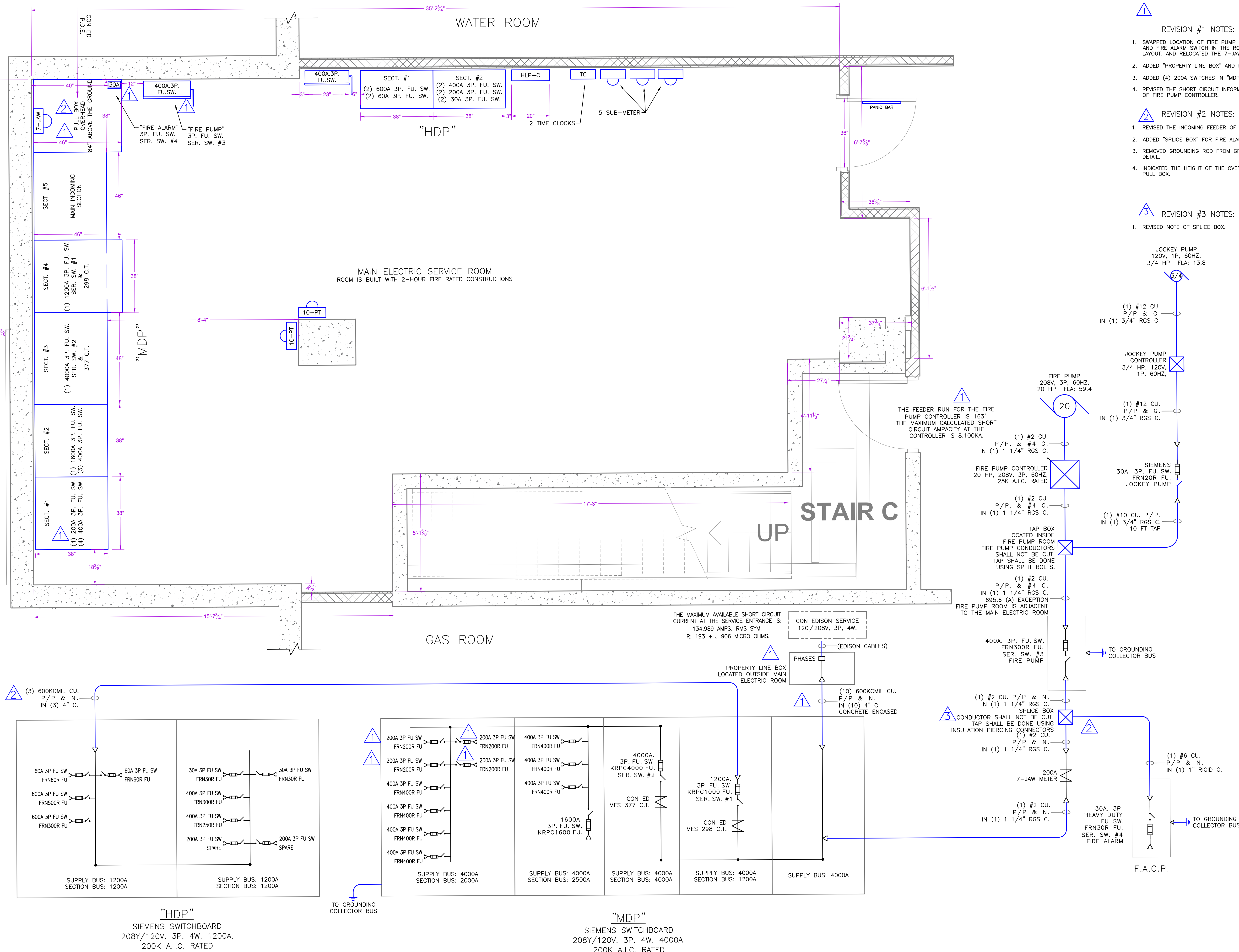
- GENERAL NOTES:
- SERVICE: 120/208 VOLTS AC, 3 PH, 4 WIRE, 60 HZ.
 - CON EDISON 377 SPEC C.T. CABINET HAS ALUMINUM DOUBLE DOORS WITH VAULT TYPE HANDLE AND A 3-WAY CATCH WITH SEALING PROVISIONS.
 - MAIN SWITCHBOARD IS RATED FOR 200K A.I.C. SYMT.
 - ALL FUSES ARE BY BUSSMANN (OR BY OTHER EQUAL MANUFACTURER) & ARE RATED FOR 200,000 A.I.C.
 - BUILT AS PER UL 891 IN EFFECT AT TIME OF MANUFACTURING. BOLTED CHANNEL FRAME WITH CODE GAUGE SHEET METAL COVERS FASTENED WITH PLATED HARDWARE, FINISHED WITH ANSI 61 GRAY PAINT.
 - FRONT ACCESSIBLE TERMINATIONS SHALL NOT EXCEED 30" DEEP FROM THE FRONT OF THE EQUIPMENT.
 - SERVICE BUS COPPER IS RATED AS PER NYC ELECTRICAL CODE ARTICLE 230.42 (A) - COPPER BUS OTHER THAN SERVICE BUS IS RATED 1000-AMPS P.S.I.
 - ALL SERVICE SWITCHES ARE GROUNDED TO A COPPER COLLECTOR BUS LOCATED IN THE SERVICE ROOM. THE MAIN GROUNDING ELECTRODE IS CONNECTED TO THE MAIN COLD WATER PIPE W/IN 5 FT OF THE ENTRANCE.
 - ALL LIVE SERVICE PARTS ARE 12" ABOVE THE FLOOR.
 - ALL EQUIPMENT MEETS WITH THE NYC ELECTRIC CODE.
 - ALL OVERCURRENT PROTECTIVE DEVICES INDICATED ON THIS PLAN, HAVE BEEN CHECKED TO COMPLY WITH SELECTIVE COORDINATION REQUIREMENTS, AND SHORT CIRCUIT FAULT CURRENT INTERRUPTING RATING.
 - THE MAIN BONDING JUMPER OF SERVICE SWITCHES 1200 AMPS OR LESS, SHALL BE MADE WITH A SCREW OR BUS BAR PROVIDED BY THE MANUFACTURER AS PART OF THE UL LISTING, OR A CONDUCTOR SIZED AS PER TABLE 250.66 OR 12.5% OF THE PHASE.
 - ALL NEW EQUIPMENTS SHALL BE NRTL LISTED.

ABBREVIATION LEGEND:

A.I.C.	AMPS INTERRUPTING CAPACITY
ATS	AUTOMATIC TRANSFER SWITCH
BPS	BOLTED PRESSURE SWITCH
C	CONDUIT (EMT UNLESS NOTED OTHERWISE)
CT	CURRENT TRANSFORMER
EMT	ELECTRICAL METALLIC TUBING
HCP	HIGH CONTACT PRESSURE SWITCH (BY: SIEMENS)
HPC	HIGH PRESSURE CONTACT SWITCH (BY: ABB)
ICCB	INSULATED CASE CIRCUIT BREAKER
LVPCB	LOW VOLTAGE POWER CIRCUIT BREAKER
MCCB	MOLDED CASE CIRCUIT BREAKER
NDL	NEUTRAL DISCONNECT LINK
RGS	RIGID GALVANIZED STEEL
SEB	SERVICE ENTRANCE BOX
MBJ	MAIN BONDING JUMPER
AWG	AMERICAN WIRE GAUGE
KOMIL	1000 CIRCULAR MILLS
PLB	PROPERTY LINE BOX
VCB	VACU-BREAK SWITCH
HP	HORSEPOWER
MB	METER BANK
MTR	METER
A	AMPS
N	NEUTRAL
NEUT	NEUTRAL
P	POLE
PH	PHASE
P/P	PER PHASE
PNL	PANELBOARD
SW	SWITCH
SWBD	SWITCHBOARD
W	WIRE
AF	AMP FRAME
AS	AMP SWITCH
AT	AMP TRIP
AL	ALUMINUM
CU	COPPER
FA	FIRE ALARM
FCO	FUSE CUT OUT
FP	FIRE PUMP
FU	FUSE
G	GROUND
GND	GROUND
SS	SERVICE SWITCH
CB	CIRCUIT BREAKER
V	VOLTS
PB	PULL BOX



GROUNDING DETAIL



- REVISION #1 NOTES:
- SWAPPED LOCATION OF FIRE PUMP SWITCH AND FIRE ALARM SWITCH IN THE ROOM LAYOUT, AND RELOCATED THE 7-JAW METER.
 - ADDED "PROPERTY LINE BOX" AND FEEDER.
 - ADDED (4) 200A SWITCHES IN "MDP".
 - REVISED THE SHORT CIRCUIT INFORMATION OF FIRE PUMP CONTROLLER.
- REVISION #2 NOTES:
- REVISED THE INCOMING FEEDER OF "HDP".
 - ADDED "SPICE BOX" FOR FIRE ALARM.
 - REMOVED GROUNDING ROD FROM GROUNDING DETAIL.
 - INDICATED THE HEIGHT OF THE OVERHEAD PULL BOX.
- REVISION #3 NOTES:
- REVISED NOTE OF SPICE BOX.

NYC ENGINEERING DPC
JRS CONSULTING
ENGINEERING THE QUALITY OF YOUR FUTURE
1449 37th STREET, SUITE 300 BROOKLYN, NY 11218
TEL: 718-215-5911 WWW.JRSNYC.COM

DISCLAIMER
NYC ENGINEERING D.P.C. / JRS ELECTRICAL & CONSULTING, INC. AND JONATHAN OTTENSTEIN P.E. HAVE NO DIRECT CONTROL OVER THE WORK IN THE FIELD AND ASSUMES NO RESPONSIBILITY OR LIABILITY FOR DAMAGES TO PROPERTY OR PERSONS OR ANY LOSS THAT MAY RESULT DIRECTLY OR INDIRECTLY FROM ANY FAILURE OF ANY ELECTRICAL EQUIPMENT TO OPERATE IN ACCORDANCE WITH THIS DESIGN, DRAWINGS, STUDY, AND/OR TIME CURRENT CURVES. THE ELECTRICAL CONTRACTOR SHALL BE RESPONSIBLE FOR ANY FIELD CHANGES, CONSTRUCTION REQUIREMENTS, COORDINATION, APPROVALS, DEAD, SAFETY, CODES, & FINAL REGULATION. TO INSTALL THIS ELECTRICAL SYSTEM AS PER THE N.Y.C. CODES & FOLLOW THE DRAWINGS AND TO ENSURE THAT THE EQUIPMENT, PIPE, WIRE, BONDING, GROUNDING AND ETC. ARE INSTALLED AS PER THE DRAWINGS AND AS PER APPLICABLE CODES. THE OWNER SHALL BE RESPONSIBLE FOR THE OPERATION, MAINTENANCE AND CONDITION OF THE ELECTRICAL SYSTEM, OR ANY CHANGES MADE AFTER COMPLETION OF THIS PROJECT. ANY OVERCURRENT PROTECTIVE DEVICE THAT IS NOT SPECIFICALLY LISTED AND/OR INDICATED ON THIS PLAN, SHALL NOT BE ASSUMED TO HAVE SELECTIVE COORDINATION AND/OR MEETING THE SHORT CIRCUIT FAULT CURRENT INTERRUPTING RATING.

THE PROPOSED ELECTRICAL WORK IS EXEMPT FROM ANY FILING OF A.C.P. FORMS BECAUSE SUCH WORK IS OCCURRING IN A NEW BUILDING, A WHOLLY NEW BUILDING WING, FLOOR, ETC. OR IN AN EXISTING BUILDING OR BUILDING WING, FLOOR ETC. THAT WAS WHOLLY CONSTRUCTED PURSUANT TO PLANS SUBMITTED FOR APPROVAL ON OR AFTER APR 1, 1987

REVISIONS		
#	DATE	DESCRIPTION
1	12/21/21	SEE REVISION #1 NOTES.
2	1/5/22	SEE REVISION #2 NOTES.
3	1/18/22	SEE REVISION #3 NOTES.

CONTRACTOR:
A.S.K. ELECTRICAL CORP.
217-14 HEMPSTEAD AVENUE
QUEENS VILLAGE, NY 11429
TEL: (718)701-5758

ADDRESS:
1215 SPOFFORD AVENUE
BRONX, NY 10474

PROJECT:
ELECTRICAL SERVICE WORK
ROOM LAYOUT &
ONE LINE DIAGRAM

SEAL & SIGNATURE:

JONATHAN OTTENSTEIN P.E.

DOR JOB NO: BX00206	DATE: 11/14/2019
SCALE: 1/2" = 1'-0"	PRIC NO: 191457
DWG BY: B.L.	DWG NO: E-101.3
CHK BY: P.P.	PAGE: 1 OF 1