

CITY OF NEW YORK  
DEPARTMENT OF BUILDINGS

Pursuant to Administrative Code Section 27-131, the following equipment or material has been found acceptable for use in accordance with the Report of Materials and Equipment Acceptance (MEA) Division.

Patricia J. Lancaster, A.I.A., Commissioner

MEA 191-03-E  
Report of Material and Equipment Acceptance Division

Manufacturer – Watts Industries (Canada) Inc., 5435 N. Service Road, Burlington, Ontario, Canada L7L 5H7.

Trade Name(s) – Watts/Ancon/Enpoco.

Product – Commercial kitchen grease interceptors. A grease intercepting device designed to be installed in the drainage plumbing of commercial and institutional kitchen facilities for the purpose of intercepting, separating and retaining of grease, cooking oils and fats contained in the effluent of such waste.

Pertinent Code Section(s) – New York City Building Code - Plumbing Section - Reference Standard RS 16 Section P105.4 (a)(4).

Prescribed Test(s) - (4) CAPACITY. - Grease interceptors shall have a grease retention capacity, in lbs. equal to at least twice the numerical flow-through rating in gpm (i.e., 2 gpm=4 lbs.). The minimum flow-through rating of grease interceptors shall be equal to the maximum value of all sinks and receptacles that may flow simultaneously through the interceptor divided by the average time for the sinks and receptacles to empty. Interceptors shall remove an average at least of 90 percent of the grease of other extractable matter in the wastewater and shall conform with the requirements of the department of public works.

Laboratory - Industrial Testing Laboratories, Inc., 2672 Metro Blvd., Maryland Heights, MD 63043.

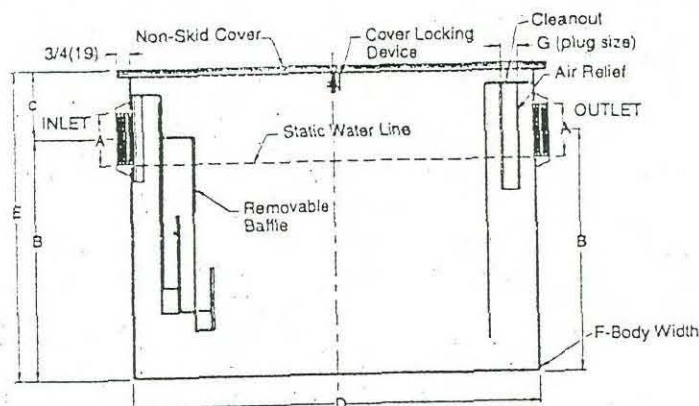
Test Report(s) -	Test No.	Date
	S902959	June 29, 1999
	S902961	July 1, 1999
	S900536	February 19, 1999
	S902776	May 20, 1999
	S902935	May 21, 1999
	S902556	May 14, 1999
	S90 2936	May 21, 1999
	S901864	April 28, 1999
	92-09-0-271	October 30, 1992
	92-09-4272	November 13, 1992

Models: WD-4, WD-7, WD-10, WD-15, WD-25, WD-35, WD-50, WD-20, GI-120-L, and G-135-L.

Description - The interceptors are made from steel duco coated inside and out and designed to intercept, separate and retain grease, cooking oils, and fats from the waste water discharged in the drainage plumbing of commercial and institutional kitchens.

The waste water draining to the interceptor passes through a flow control fitting which regulate the flow to the capacity of the interceptor. It then passes over separator baffles which are positioned to insure that greases, fats, and oils are efficiently separated from the waste water. Once separated, these contaminants rise to the surface of the water in the interceptor by conventional gravity method. The waste water, now relieved of over 90% of contaminant oils and grease, continues to flow through the interceptor into the sanitary system.

The specific description and the model numbers are as follows:



Recommendation - That the above kitchen grease interceptors be accepted on condition that all uses, locations and installations comply with the New York City Building Code Subchapter 16 and Reference Standard RS-16 specifically Section P105.4 (d)(4) and the requirement of the Department of Environmental Protection.

All shipments and deliveries of such equipment shall be provided with a metal tag, suitably placed, certifying that the equipment shipped or delivered is equivalent to those tested and accepted for use, as provided for in Section 27-131 of the Building Code.

Final Acceptance

March 1, 2004

Examined By

*[Handwritten signature]*

MEA 191-03-E

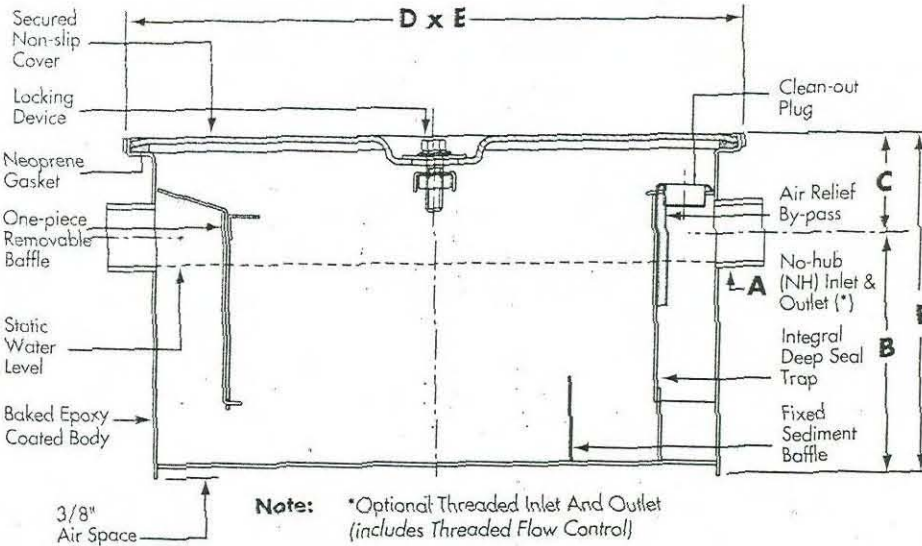
2 of 3 pages

# Grease Interceptors

WD-Series

PDI Certified Grease Interceptor Specification

The new **WD Series** grease interceptor is now available from **Watts Drainage**. Engineered to meet the changing needs of both the specification and replacement markets, the **WD Series** features a new lower design for ease of installation as well as a revolutionary high efficiency layout for faster cleaning. The baked-on epoxy coating ensures long life and durability. Each **WD Series** interceptor is North American made and individually tested before leaving our factory. **Watts Drainage** is proud to bring you a true value in the new **WD Series**.



ISO 9002  
CERTIFIED



Note: \*Optional Threaded Inlet And Outlet (includes Threaded Flow Control)

WD-Series

PDI Certified Grease Interceptor

Interceptor Catalog Number	List Price A.R.E.	Heavy-Duty Traffic Cover	Flow Rate GPM	Grease Capacity Lbs	A Inlet & Outlet	B Base to Center	C Top to Center	D Length	E Width	F Height
WD-4	667.00	1,312.00	04	08	2"	7-3/4"	3-1/4"	16"	10"	11"
WD-7	926.00	1,470.00	07	14	2"	8-1/2"	3-1/2"	18"	13"	12"
WD-10	1,088.00	1,580.00	10	20	2"	8-1/2"	3-1/2"	21-3/4"	14"	12"
WD-15	1,612.00	1,700.00	15	30	2"	10-1/2"	3-1/2"	22"	15"	14"
WD-20	1,973.00	1,800.00	20	40	3"	11-1/2"	3-1/2"	24"	15-3/4"	15"
WD-25	2,216.00	1,900.00	25	50	3"	12"	4-1/2"	26"	16-1/2"	16-1/2"
WD-35	2,739.00	2,100.00	35	70	3"	14"	5"	30"	18"	19"
WD-50	3,627.00	2,200.00	50	100	4"	16"	5-1/2"	32"	22"	21-1/2"

Option Description	Option Suffix	List Price	Option Description	Option Suffix	List Price
Sediment Bucket	-B	548.00	Flange & Clamp Device	-FC	473.00
Extension Up to 12"	-E	987.00	Inlet & Outlet other than Standard Size	-O	171.00
Extensions over 12", add per inch	-E (specify)	82.00	Threaded Connections	-THD	No Add
Heavy Duty Traffic Cover	-HD	P.O.A.	Stainless Construction	--SS	POA

-HD Heavy-Duty Traffic Cover rated at 10,000 lbs. maximum safe live load.

WD-L Series

Low-Rough Installation

Interceptor Catalog Number	List Price A.R.E.	Flow Rate GPM	Grease Capacity Lbs	A Inlet & Outlet	B Base to Center	C Top to Center	D Length	E Width	F Height
WD-20-L	2,660.00	20	40	3"	7-3/4"	4"	35"	23"	12"
WD-35-L	3,425.00	35	70	4"	7"	4-1/2"	41"	33"	12"
WD-50-L	5,802.00	50	100	4"	8-1/2"	5-1/2"	55"	33"	14"



Consult factory for all applications outside of listed parameters.