



BUILDINGS BULLETIN 2019-001

Technical

Supersedes: None

Issuer: Gus Sirakis, P.E.
Assistant Commissioner, Technical Affairs and Code Development

Issuance Date: January 15, 2019

Purpose: This document establishes the design requirements of refuse and recyclable storage rooms and provides an acceptable alternative design option.

Related Code	BC 1107.3	ICC A117.1 305	ICC A117.1 308.3	ICC A117.1 404.3
Section(s):	BC 1213	ICC A117.1 308	ICC A117.1 309	ICC A117.1 404.3.1
	ICC A117.1 304	ICC A117.1 308.2	ICC A117.1 404	ICC A117.1 703

Subject(s): Accessible refuse room; Accessible recyclable storage room; Common-use refuse recyclable storage room

I. APPLICABILITY

This document shall apply only to buildings with refuse and recyclable storage rooms governed by the New York City Construction Codes.

II. BACKGROUND

The New York City Building Code (BC) requires that, in multiple dwellings, refuse and recyclable storage rooms be provided in accordance with BC Section 1213. Per BC Section 1107.3, these rooms and spaces that are available to the general public or for common use shall be accessible. This bulletin establishes the design requirements, and provides an alternative design option, for those refuse and recyclable storage rooms.

III. SPECIFICS

A. Standard design. In multiple dwellings, refuse disposal, refuse recyclable, and refuse storage rooms intended for the general public or common-use shall comply with this bulletin. Each room must comply with ICC A117.1¹, including but not limited to, Section 304 (Turning Space), Section 305 (Clear Floor Space), Section 309 (Operable Parts) and Section 404 (Doors and Doorways). The refuse and recyclable storage room door may swing into the room provided that a clear floor space not less than 30 inches by 48 inches is provided within the room beyond the arc of the door swing. See Figure 1 of this bulletin.

B. Alternative design. An alternative design (See Figure 2 of this bulletin) is permitted provided that all of the following conditions are met:

1. The refuse and recyclable storage room shall be designed so that the wheelchair user can enter the room head on, and back out without turning or changing direction.
2. The door of the refuse and recyclable storage room shall be provided with maneuvering clearance, except that such clearance is not required inside the refuse disposal/storage room.

However, the clear door width shall be 36" to provide a forward approach as per ICC A117.1 Section 305.7.2 (Forward Approach) and Figure 305.7(b). Such clear width at the door shall be measured between the face of the door and stop, with the door open 90 degrees. This will typically require a 38" wide door.

3. The refuse and recyclable storage room door shall be a full powered automatic door that complies with ICC A117.1 Section 404.3 (Automatic Doors). Controls for the automatic door shall be provided within the reach range permitted in ICC A117.1 Section 308 (Reach Ranges) and shall be located alongside the door at the latch side. Room identification and symbol of accessibility shall be provided near the control and shall comply with ICC A117.1 Section 703 (Signs).
4. An occupancy sensor shall be provided in the refuse and recyclable storage room to detect the presence or absence of occupants. Upon the detection of an occupant in the room, the door shall be maintained in the open position for the entire period during which the room is occupied. Upon the occupancy sensor's detection that the room is unoccupied, the door shall automatically return to the closed position.
5. The automatic door of the refuse and recyclable storage room shall return to the closed position in the case of a power failure, upon the activation of the fire alarm systems (if a fire alarm system is provided in the building), or upon the activation of smoke detectors.
6. The refuse and recyclable storage room shall be provided with a fire-rated door that remains closed during periods of nonuse. The placement of the storage bins and/or shelves and the location of the refuse chute access opening shall comply with the reach ranges of ICC A117.1 Section 308 (Reach Ranges).
7. All controls and operating mechanisms intended for operation shall comply with ICC A117.1 Section 305 (Clear Floor Space) and Section 309 (Operable Parts). Controls for maintenance and service are not required to be accessible.

IV. OTHER CONFIGURATIONS

Other configurations of refuse and recyclable storage rooms shall be guided by the standard design or the annexed alternative design and shall be subject to the Borough Offices' approval.

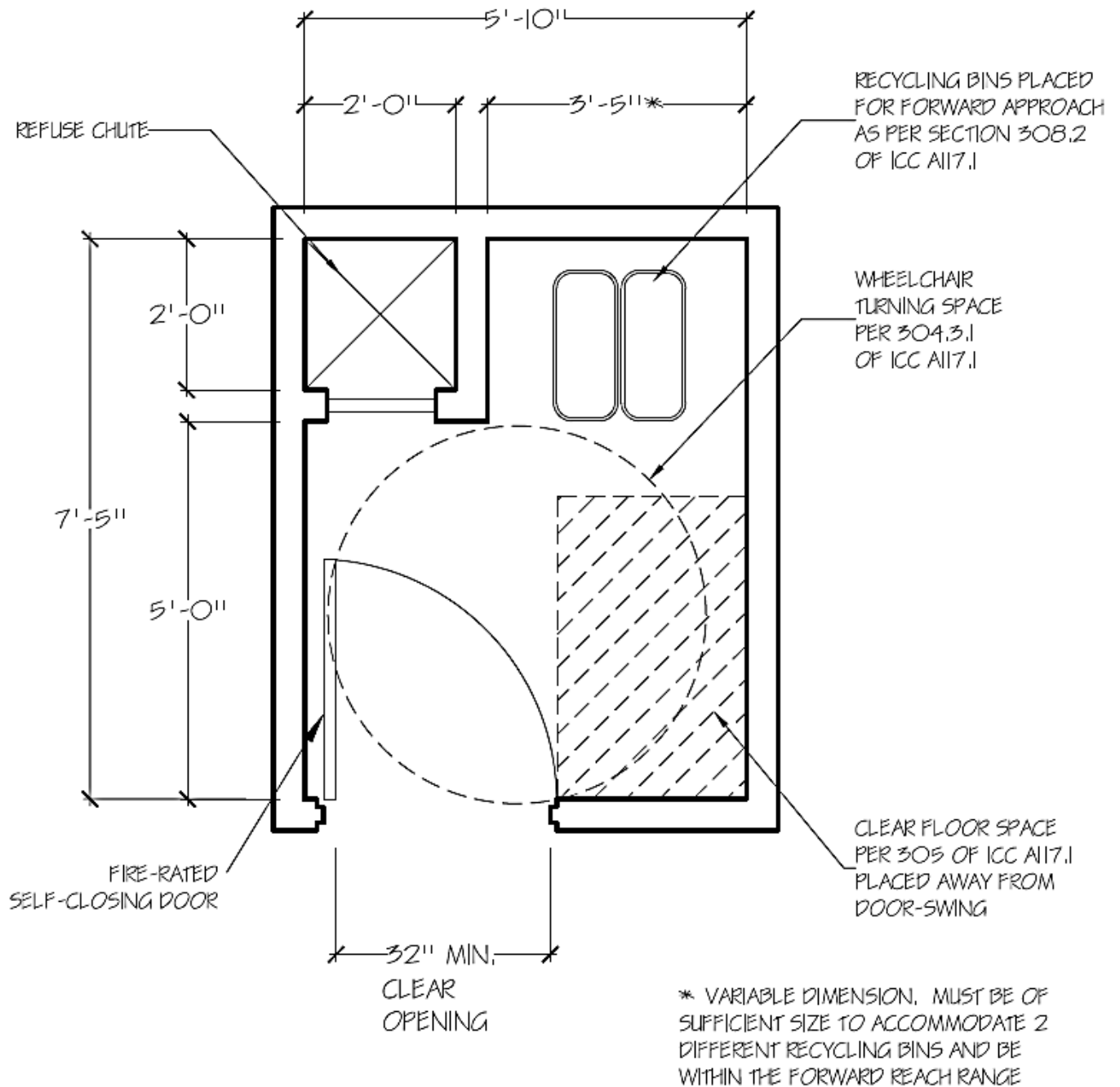
V. REFERENCE STANDARDS

¹ICC/ANSI A117.1 – 2003/2009 Editions, *Accessible and Usable Buildings and Facilities*

PLAN; TYPICAL REFUSE AND RECYCLABLE STORAGE ROOM

Not to Scale

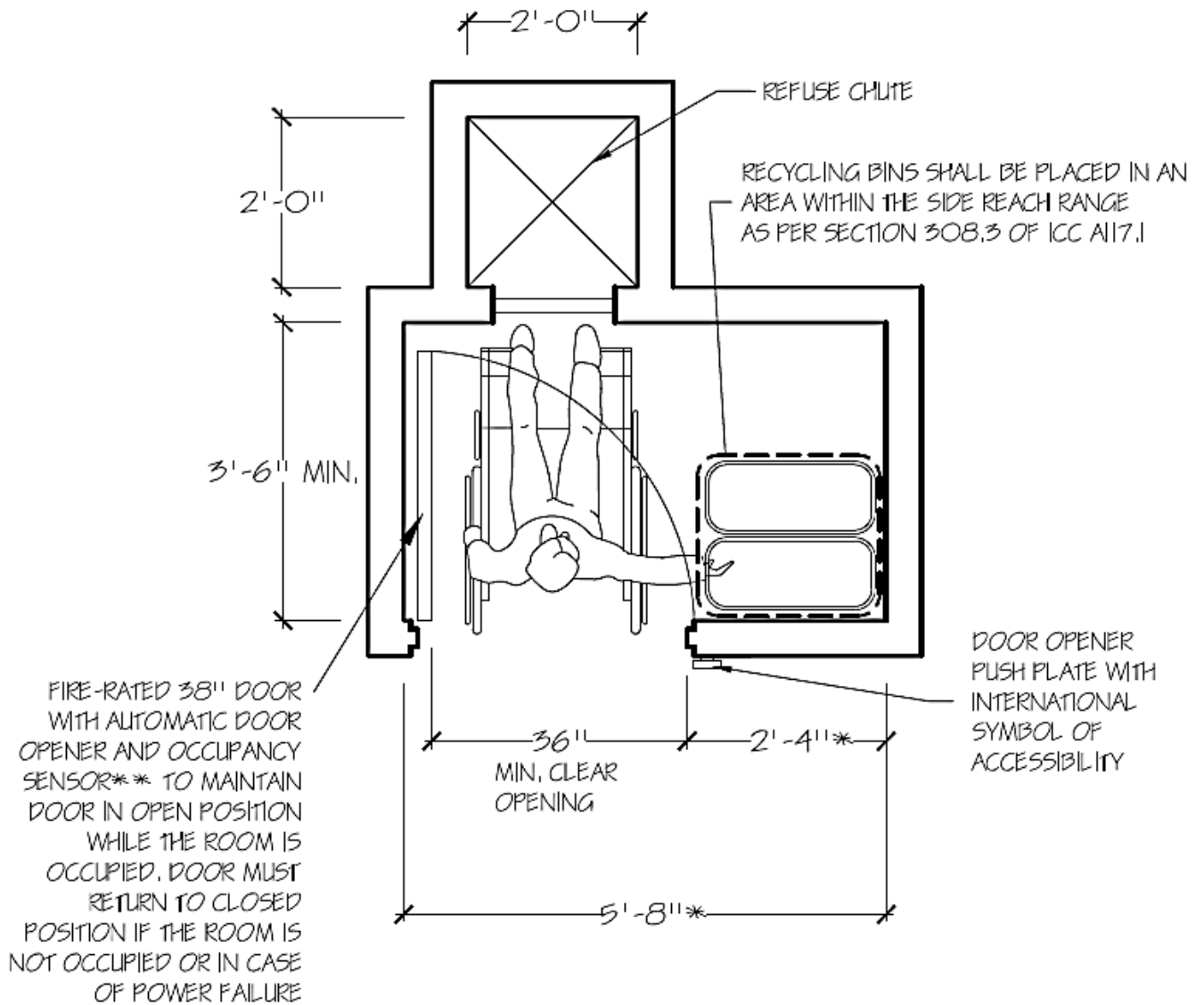
Figure 1



PLAN; ALTERNATIVE REFUSE AND RECYCLABLE STORAGE ROOM

Not to Scale

Figure 2



- ** THE OCCUPANCY SENSOR MAY BE:
1. WEIGHT-SENSITIVE FLOOR MAT
 2. INFRARED SENSOR
 3. OTHER EQUIVALENT TECHNOLOGY

* VARIABLE DIMENSION. MUST BE OF SUFFICIENT SIZE TO ACCOMMODATE 2 DIFFERENT RECYCLING BINS AND BE WITHIN THE SIDE REACH RANGE