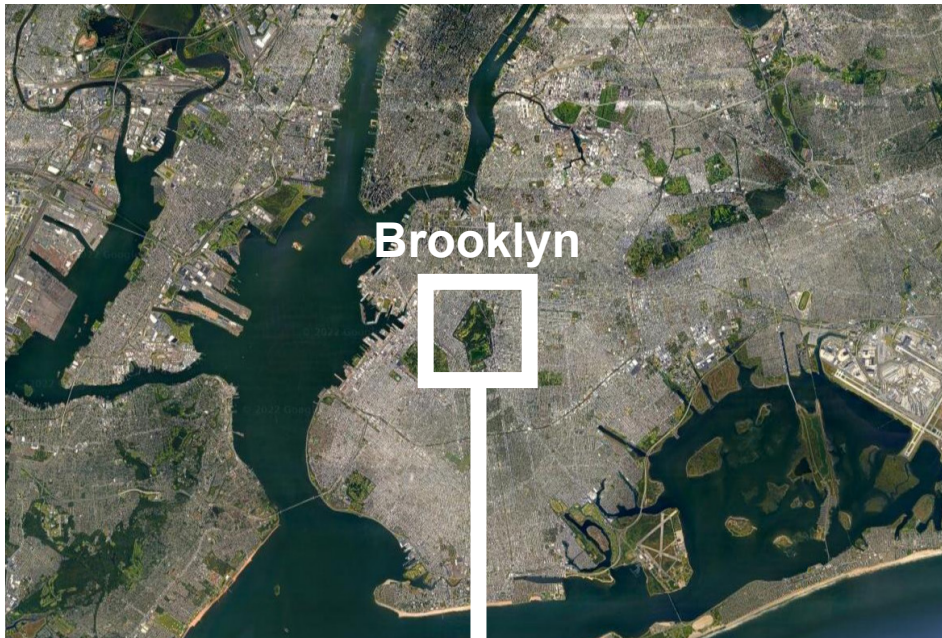


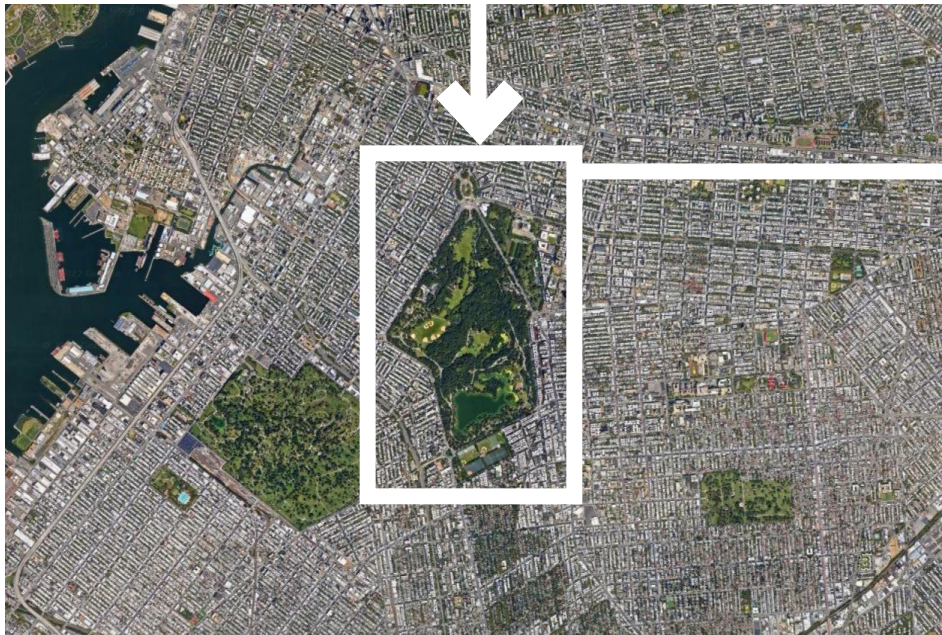
Shirley Chisholm Pavilion & Parkside Restroom

August 7th, 2025

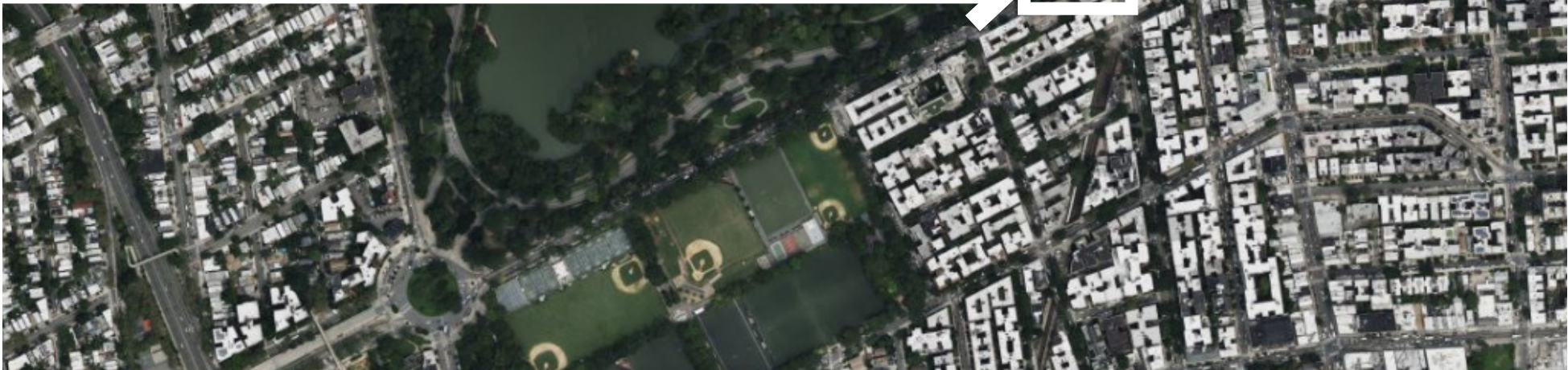


Brooklyn

2 MI



1000 FT



500 FT

City

Neighborhood

Site



NYC Parks



Prospect Park

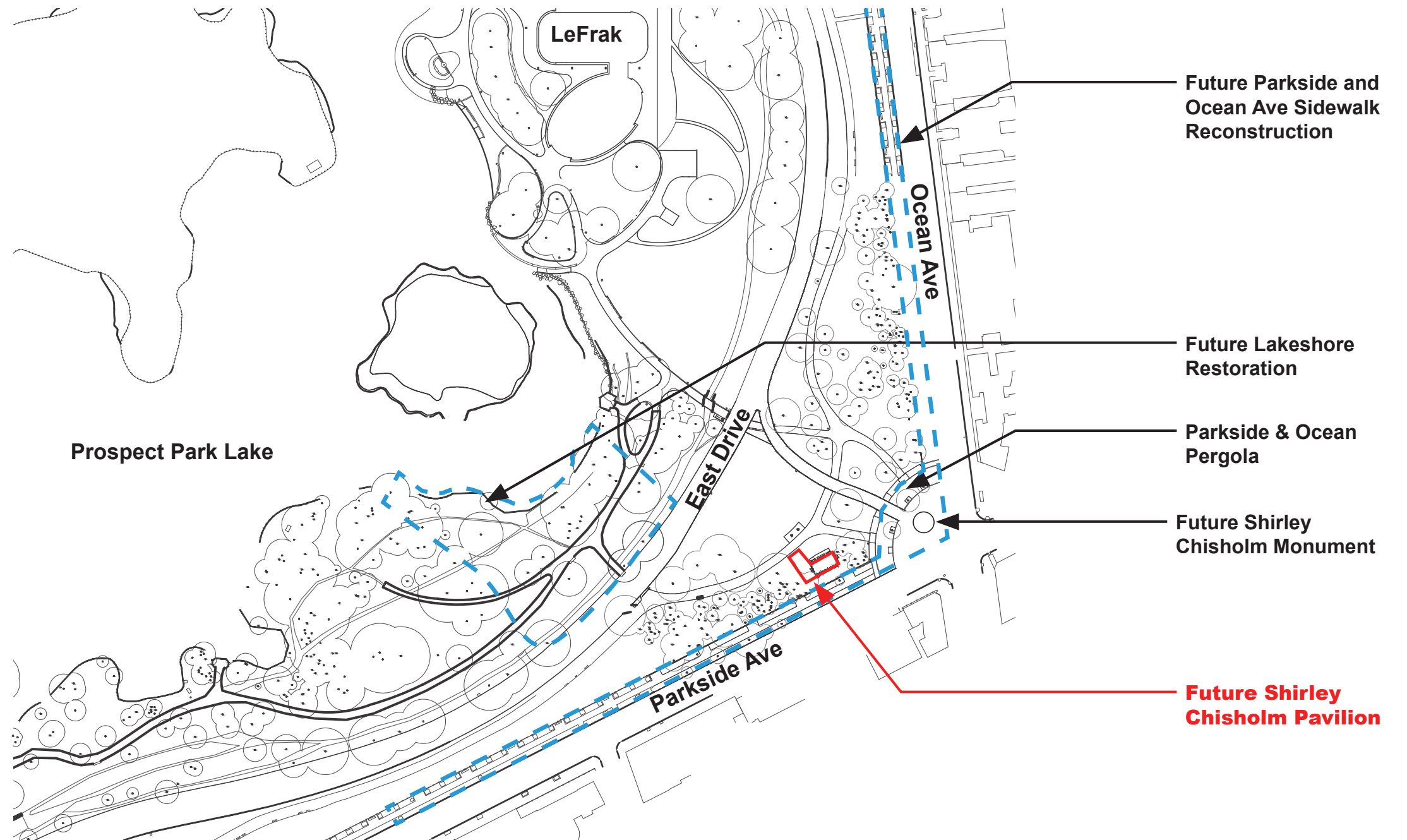
Shirley Chisholm Pavilion | Project Location





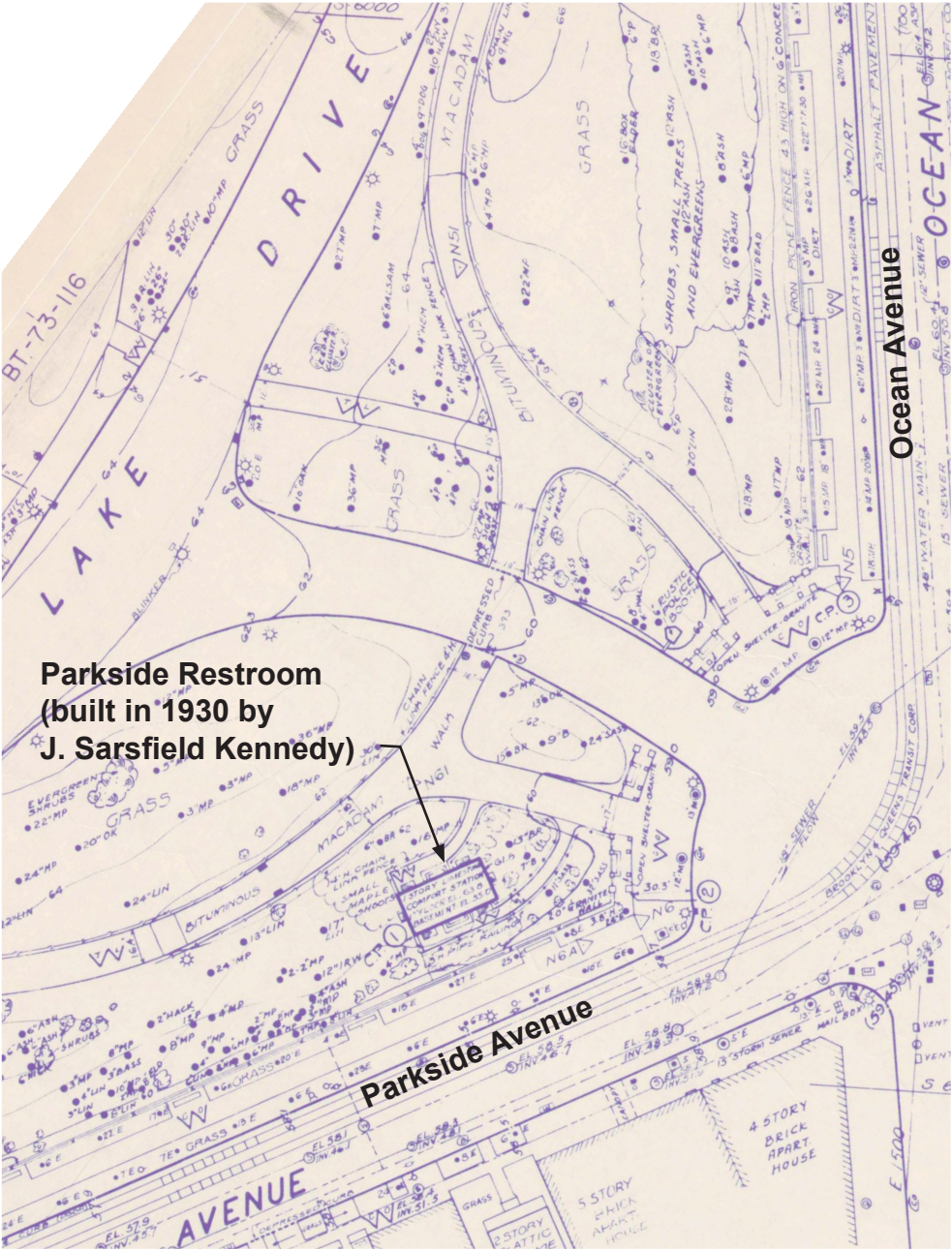
Prospect Park
Shirley Chisholm Pavilion | Neighboring Park Restrooms



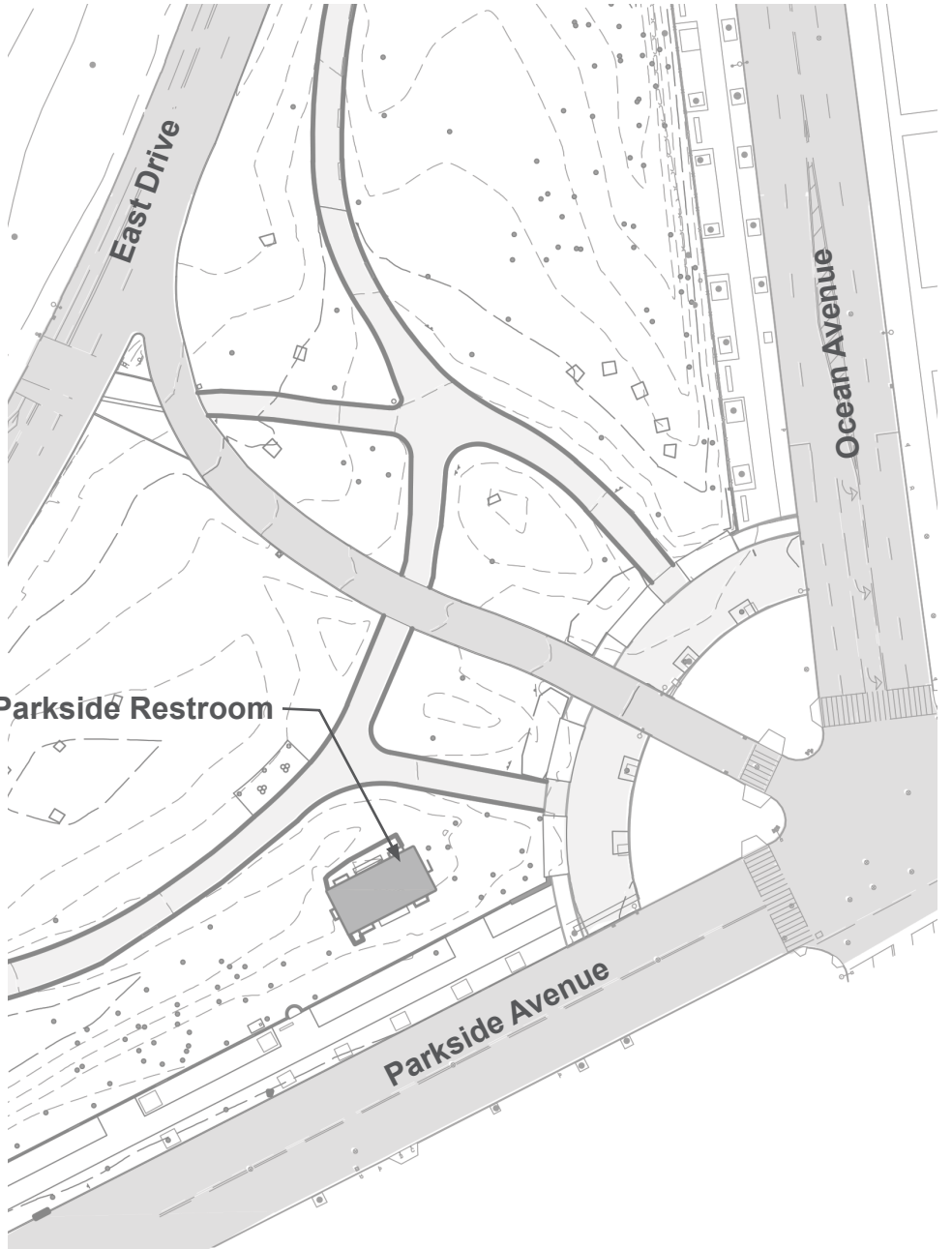




1874 Olmsted & Vaux Plan



1935 Survey



2024 Survey



NYC Parks



Prospect Park
Shirley Chisholm Pavilion | Historic Surveys & Plans





NYC Parks



Prospect Park

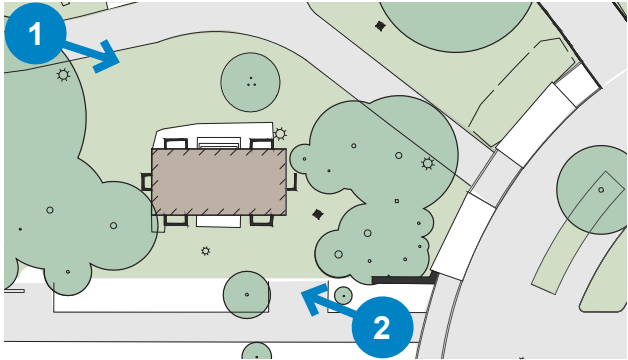
Shirley Chisholm Pavilion | Historic Photos - Parkside Restroom, 1934



1. Front of building facing the park



2. Back of building facing the street



NYC Parks



Prospect Park
Shirley Chisholm Pavilion | Existing Photos - Parkside Restroom





- High volume of park users at this corner especially on weekends from barbeques, Drummer's Grove, large gatherings
- Need for shaded area and seating - Pergola is only current seating
- Future additional traffic from visitors to Shirley Chisholm monument



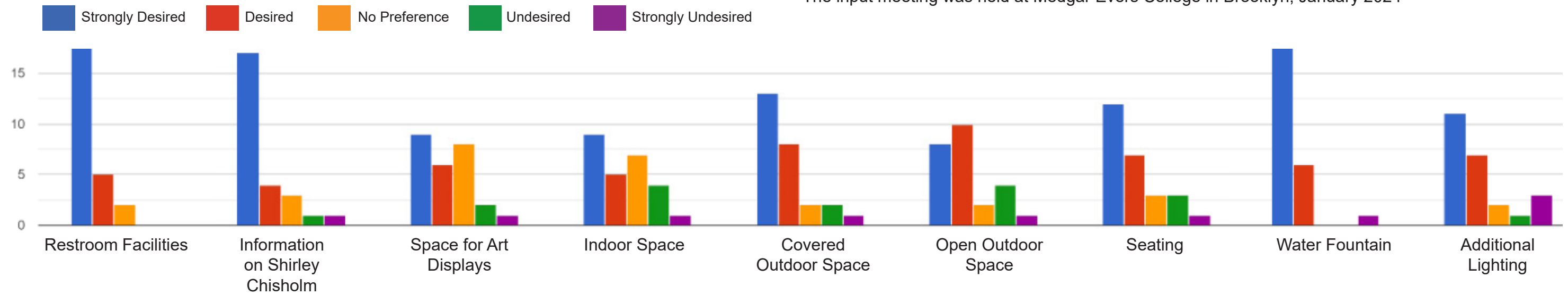
NYC Parks



Prospect Park
Shirley Chisholm Pavilion | Current Traffic



The input meeting was held at Medgar Evers College in Brooklyn, January 2024



NYC Parks



Prospect Park
Shirley Chisholm Pavilion | Community Input Meeting

Community Priorities

Shirley Chisholm

Exhibit, Education, Reflection Space

Restroom

Public Restroom, Water Fountains

Public Space

Covered Outdoor, Indoor Space, Open Outdoor

Event

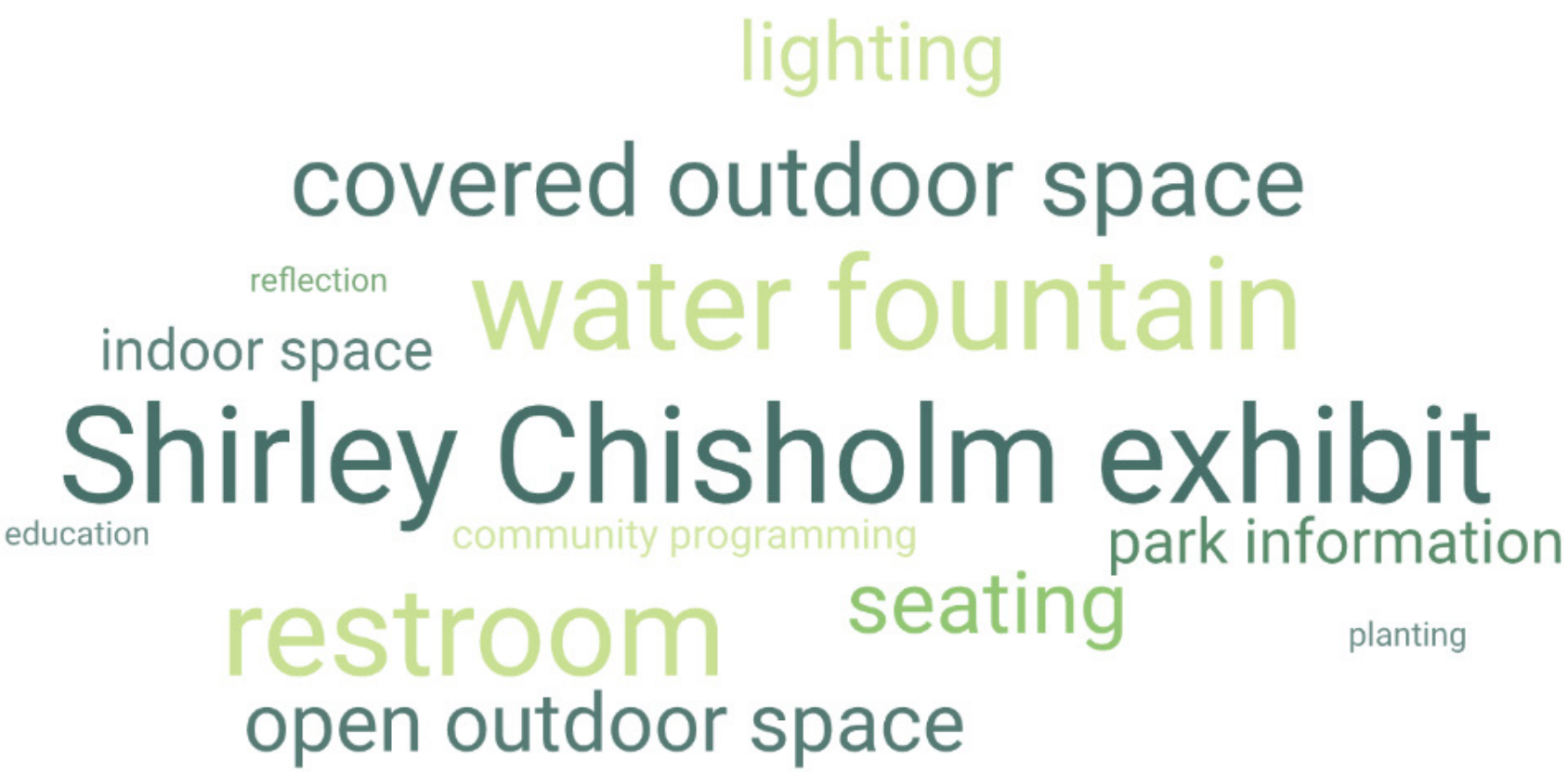
Art and Information Display, Community Programming

Green

Trees, Native Planting

Security

Lighting



NYC Parks



Prospect Park
Shirley Chisholm Pavilion | Community Input Meeting



SuperHub Meerstad Market, De Zwarte Hond



Naval Cemetery Landscape, Nelson Byrd Woltz



Forfatterhuset Kindergarten, Cobe



Weeksville Heritage Center, Caples Jefferson Architects



NYC Parks



Prospect Park
Shirley Chisholm Pavilion | Precedents

Shirley Chisholm was a bastion of strength, substance, and style. Her presence was foundational, presenting substantive issues with phenomenal form and an unwillingness to compromise her beliefs for political gain.

Her legacy lives in the vibrant representations of her character that serve as reminders of her sharp sophistication, always pushing the envelope.



Chisholm's bold fashion was never in the background



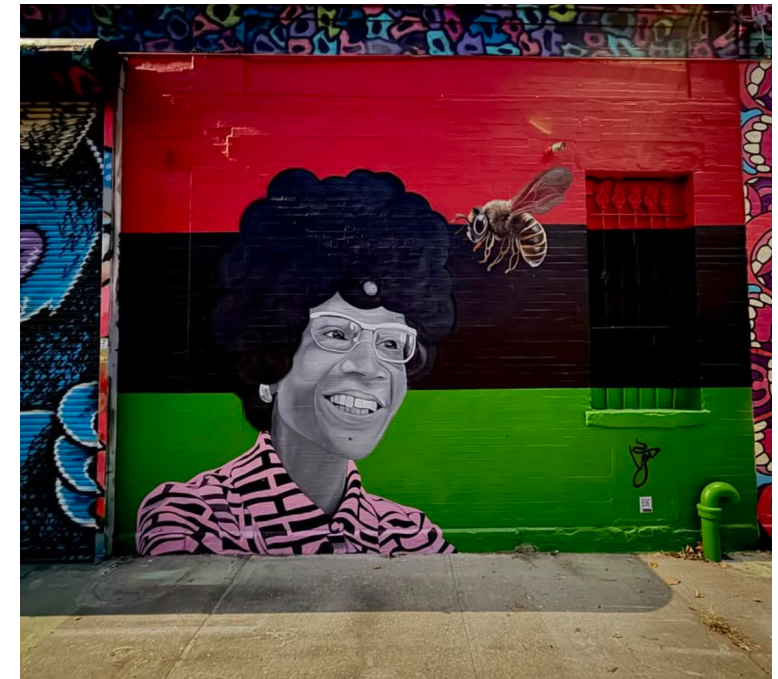
Shirley Chisholm Monument



Shirley Chisholm Monument at night



Shirley Chisholm State Park



Bed-Stuy



NYC Parks



Prospect Park

Shirley Chisholm Pavilion | Shirley Chisholm and Her Legacy

The monument and Shirley Chisholm Pavilion not only commemorate Chisholm, but also celebrate the Caribbean community in the nearby neighborhoods.

The Pavilion will support the existing gathering space of the Drummers' Grove and Prospect Park Alliance's community programming. Display panels will share information about Shirley Chisholm and the community.

The project takes inspiration from pre-colonial Caribbean architecture, using systems of lightweight posts and infill screen, as well as the colorful reclamation of post-colonial architecture.

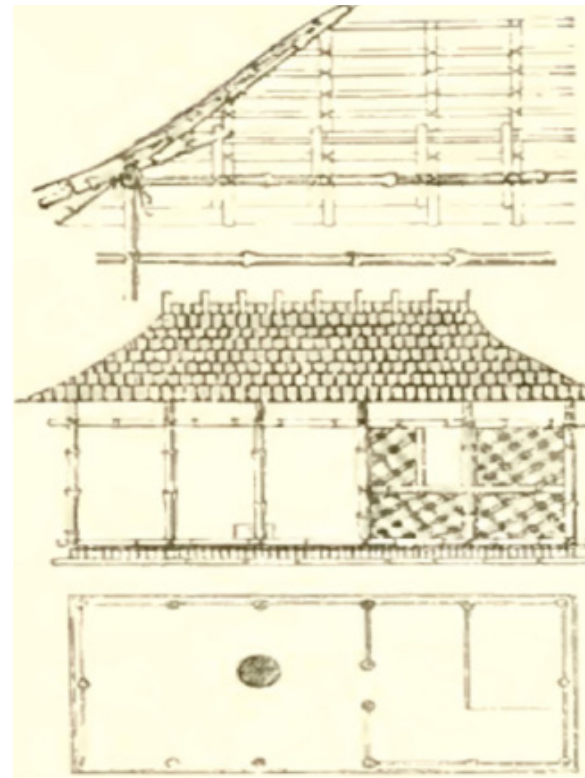
Shirley Chisholm had roots in Guyana and Barbados, an American who had a forward progressive vision for not only the community of her time, but also for the future of Brooklyn, whose residents come from diverse cultures and backgrounds.



Bridgetown, Barbados



Lefferts Historic House



Pre-Colonial Barbadian architecture



Speightstown, Barbados



Drummer's Grove



NYC Parks



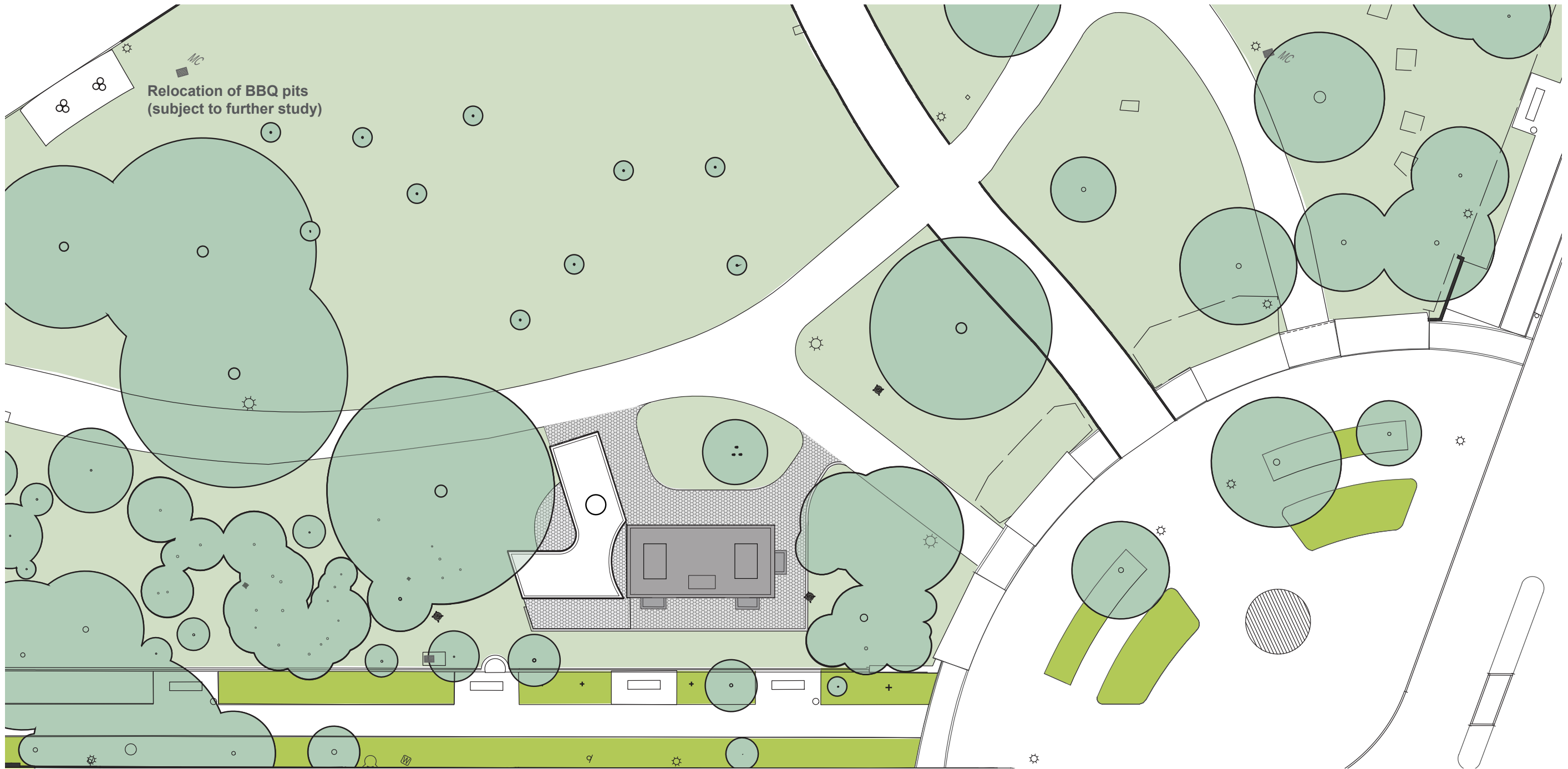
Prospect Park
Shirley Chisholm Pavilion | The Caribbean Community



NYC Parks



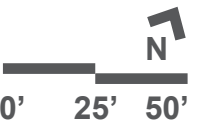
Prospect Park
Shirley Chisholm Pavilion | Shirley Chisholm Monument

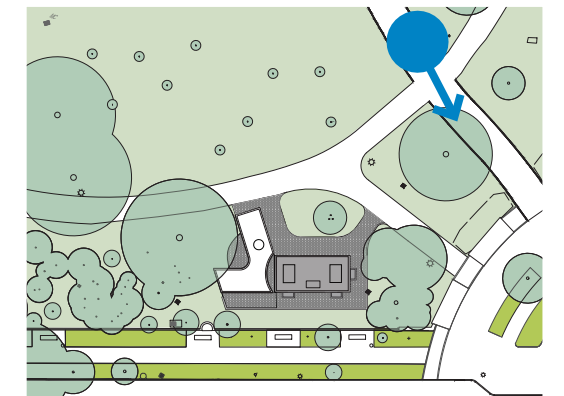


NYC Parks



Prospect Park Shirley Chisholm Pavilion | Site Context





NYC Parks



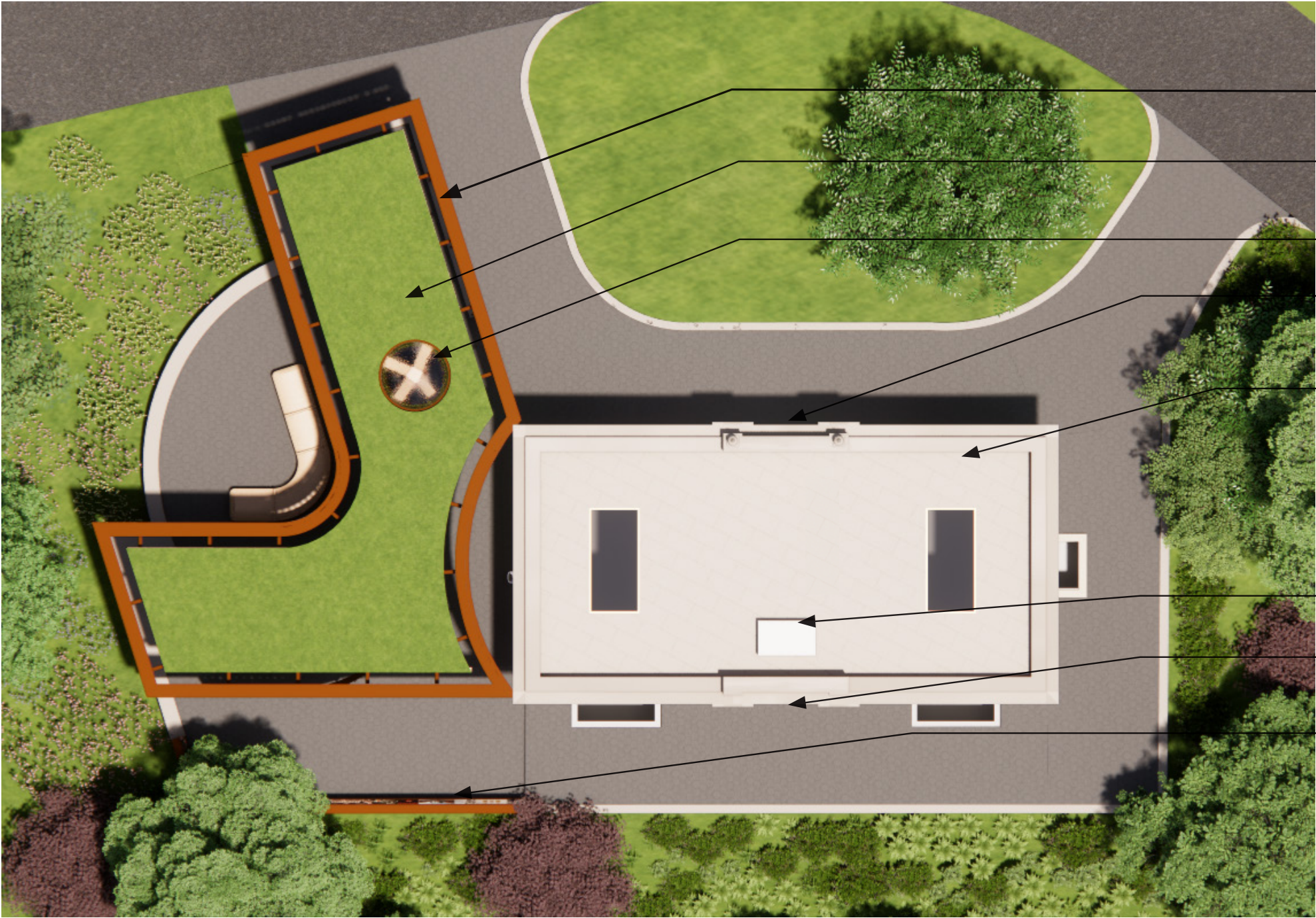
Prospect Park
Shirley Chisholm Pavilion | View from East Drive

Design Elements

- Terracotta-clad wood structure with covered seating and exhibition panels
- Accessible entrance to restored restroom
- Rear plaza for additional exhibition panels
- Seating for varied gathering sizes
- Separate entrance to the building for park staff

Approx. Building Areas:

Existing restroom - 1,650 SF
Shaded outdoor - 1,030 SF
Uncovered outdoor - 1,650 SF



Open-air wood canopy

Green roof

Skylight

Restroom Entrance

Restored Parkside Restroom

A/C Condenser Unit

Maintenance Entrance

Outdoor display area



NYC Parks



Prospect Park
Shirley Chisholm Pavilion | Site Plan

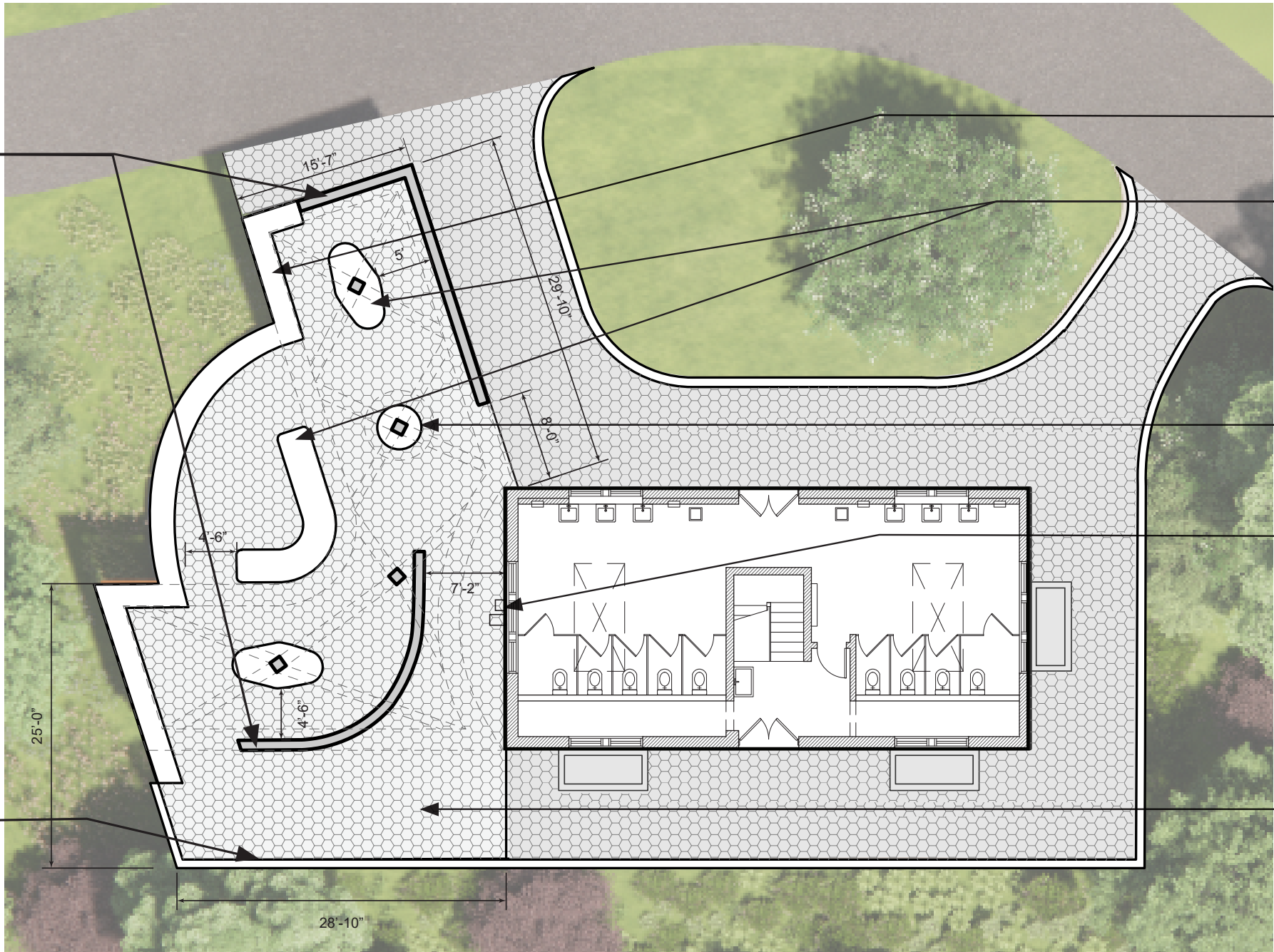




Large format panels under wood canopy



Embedded panels at rear retaining wall



4" raised seat curb

Benches

Central Information Kiosk

Water fountains and bottle fillers

Hex pavers



NYC Parks



Prospect Park
Shirley Chisholm Pavilion | Floor Plan

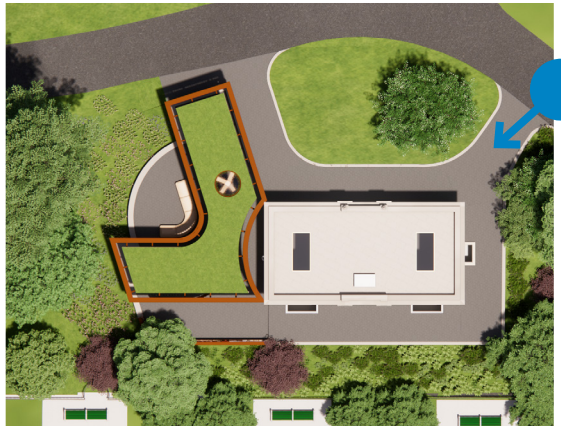




NYC Parks



Prospect Park
Shirley Chisholm Pavilion | View from Pergola



NYC Parks



Prospect Park
Shirley Chisholm Pavilion | View from Path - East Approach



NYC Parks



Prospect Park
Shirley Chisholm Pavilion | View from Path - West Approach





Prospect Park
Shirley Chisholm Pavilion | View from Path - West Approach



NYC Parks

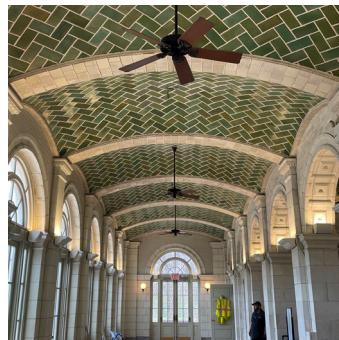


Prospect Park
Shirley Chisholm Pavilion | West Approach

Ceiling inspired by community cultural heritage



Vaulted spaces, inspired by park structures



Colorful terracotta baguettes



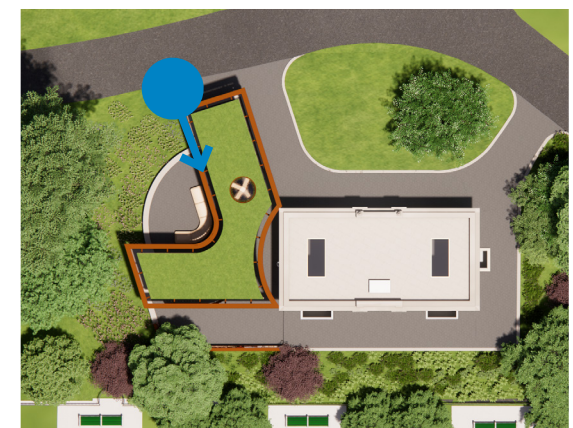
Timber, inspired by historic timber & sustainability goals



NYC Parks



Prospect Park Shirley Chisholm Pavilion | Interior View

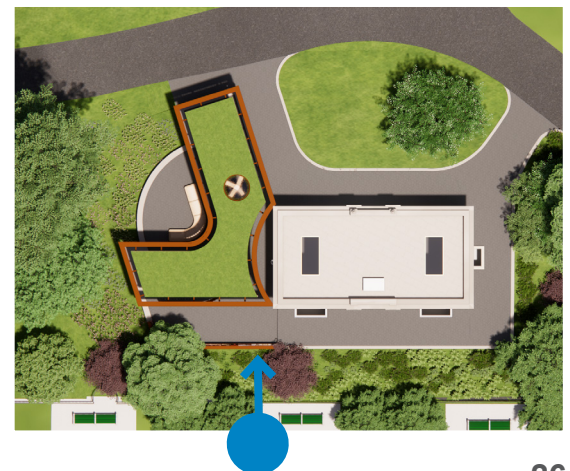


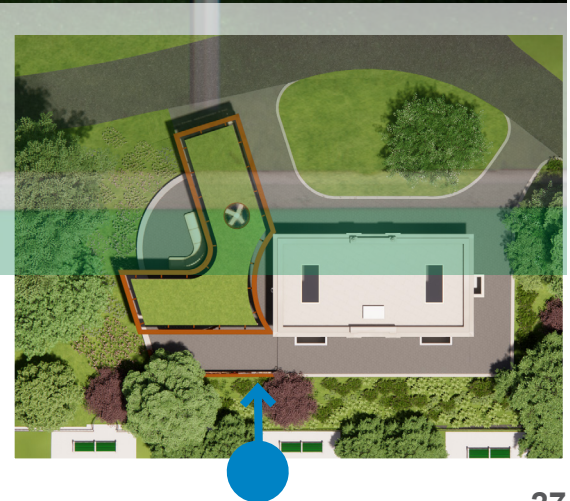
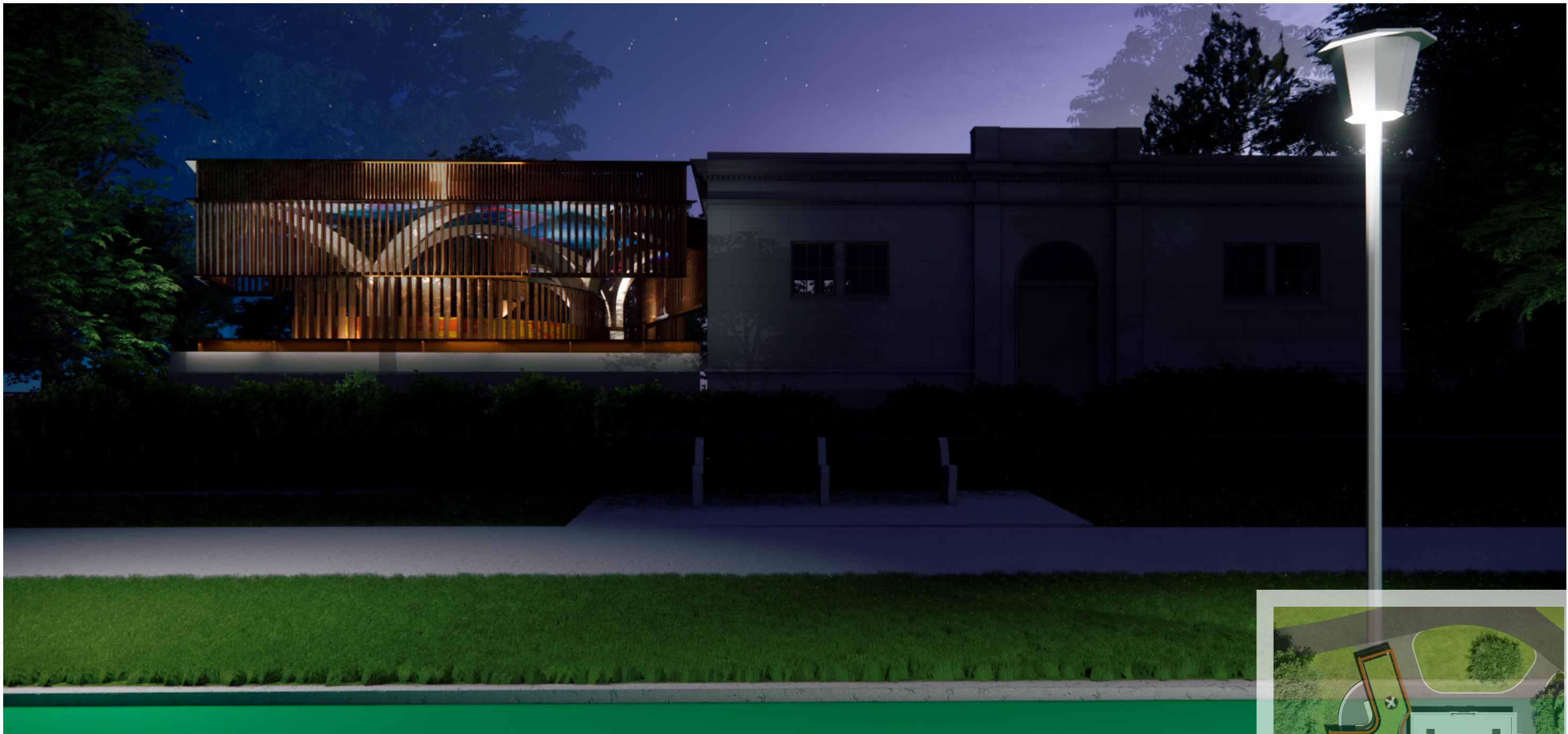


NYC Parks



Prospect Park
Shirley Chisholm Pavilion | View from Parkside Ave Sidewalk





NYC Parks



Prospect Park
Shirley Chisholm Pavilion | View from Parkside Ave Sidewalk

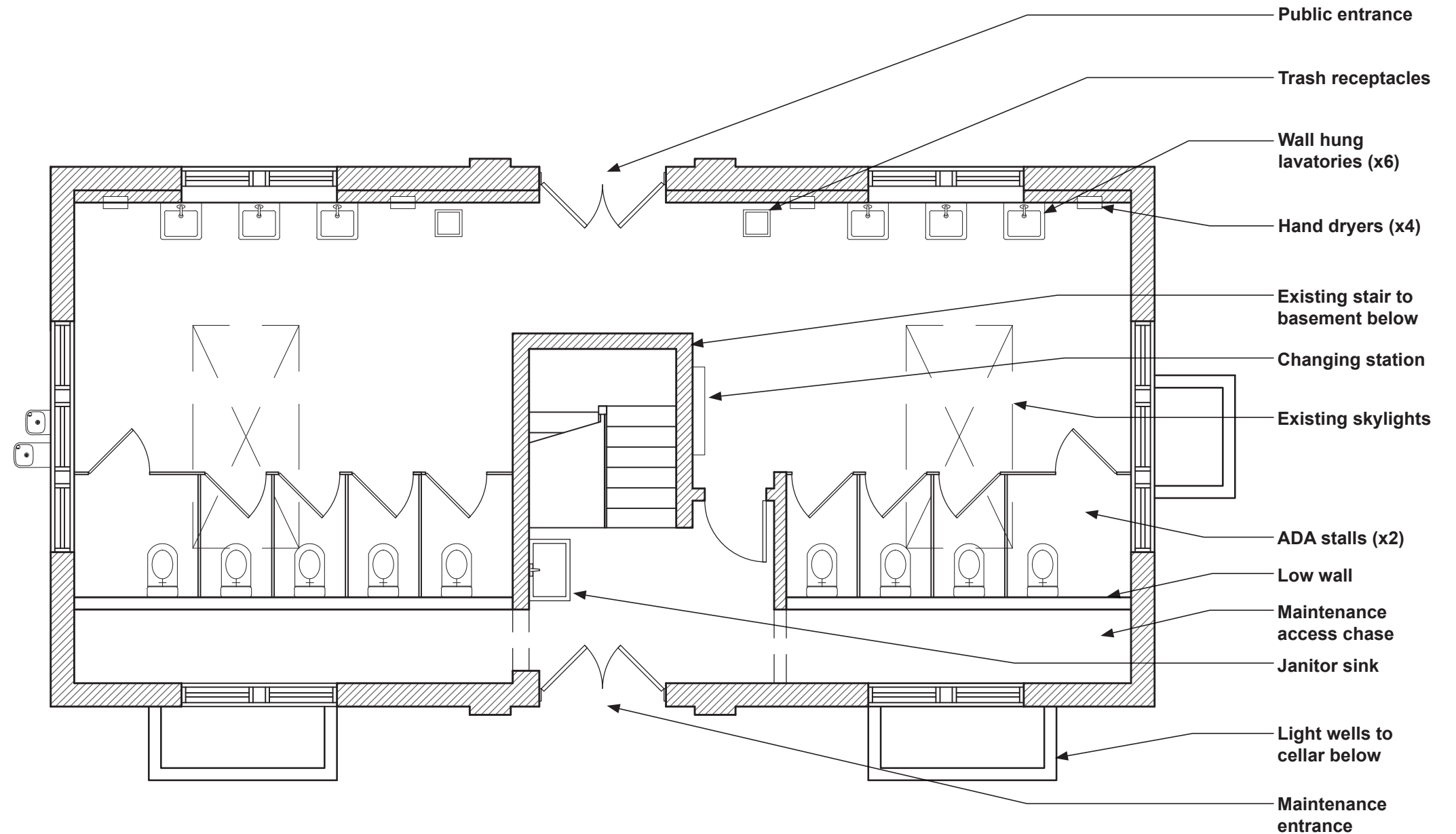
Design Elements

- 10 all-gender stalls total, 2 of which are ADA accessible
- Parks standard lavatories, hand dryers, toilets, mirrors, trash receptacles
- High privacy stall partitions
- Janitor closet
- Separate entrance for park staff, maintenance stair down to basement level
- Maintenance access chase to back of toilet fixtures

Approx. Building Areas:

Restroom - 600 SF

Janitor closet and maintenance - 200 SF



NYC Parks



Prospect Park
Shirley Chisholm Pavilion | Restroom Plan

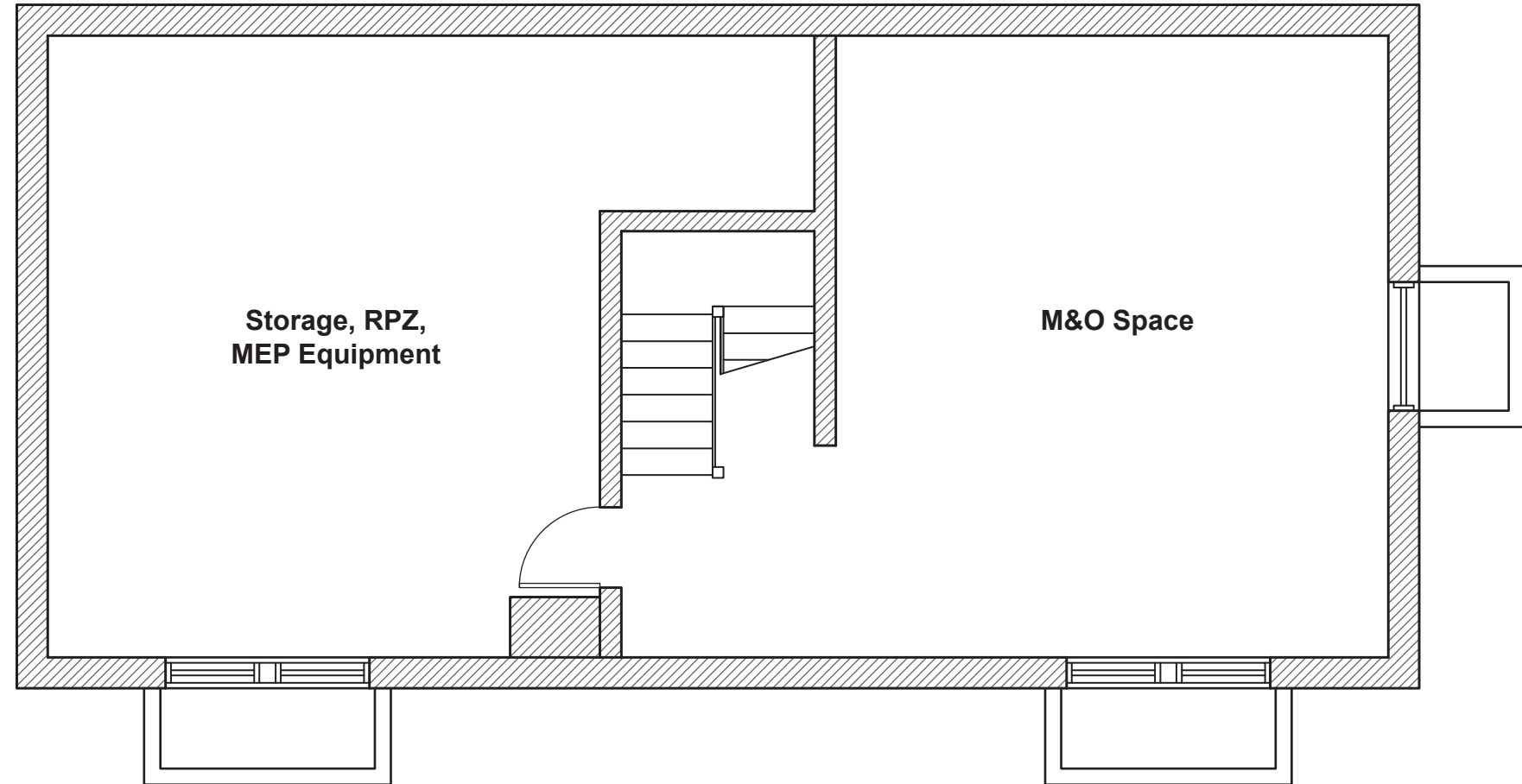
Design Elements

- Break area for park staff
- Lockable storage space
- Utility space for RPZ, MEP equipment

Approx. Building Areas:

Staff area - 372 SF

Storage / Utility - 368 SF



NYC Parks



Prospect Park
Shirley Chisholm Pavilion | Basement Plan



NYC Parks



Prospect Park
Shirley Chisholm Pavilion | Restroom Interior View



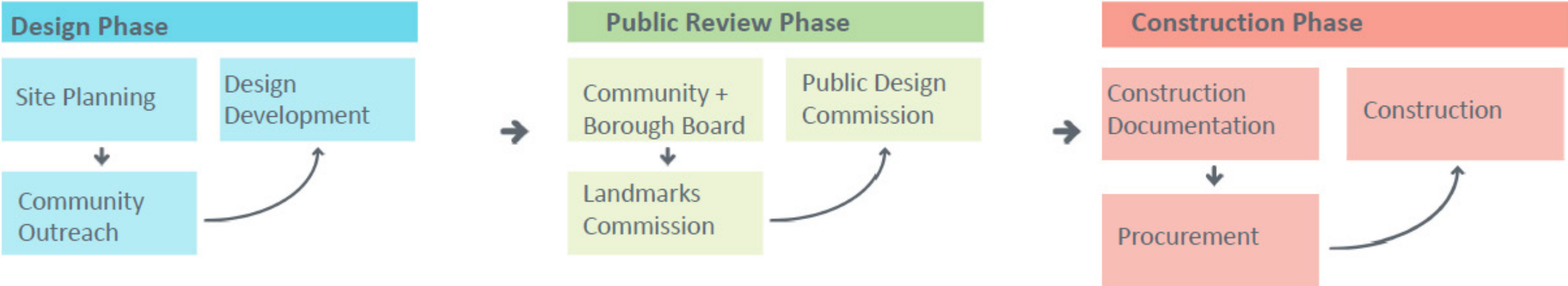


NYC Parks



Prospect Park
Shirley Chisholm Pavilion | Restroom Interior View

Process:



Timeline:

2024-25

Site Planning & Analysis
Community Outreach
Public Review
Design Development

2026

Design Development
Construction Documentation

2027

Procurement
Construction Begins

2028

Construction Concludes



NYC Parks



Prospect Park
Shirley Chisholm Pavilion | Project Process and Timeline

Questions?

Contact Us:

community@prospectpark.org



NYC Parks



Prospect Park
Shirley Chisholm Pavilion