



PROSPECT PARK LOCATIONS

Automatic Public Toilet (APT)



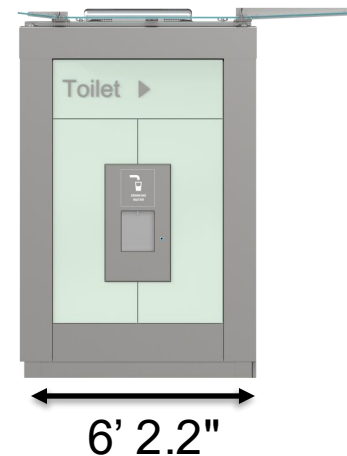
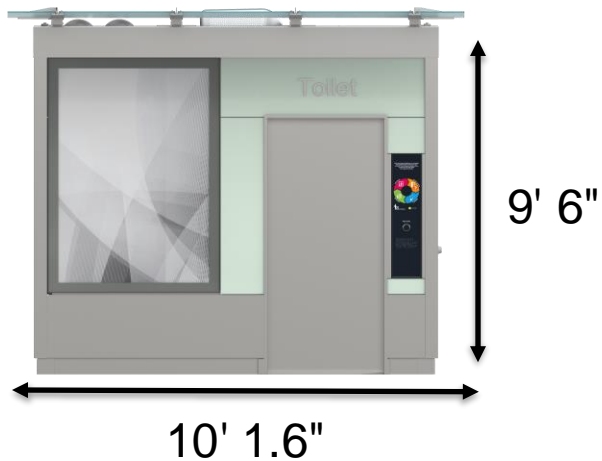
JCDecaux / DOT Coordinated Street Furniture Franchise

Automatic Public Toilets (APTs)

- Franchisee installs and maintains units; capital and expense funds are not used here
- Open 8am-8pm daily
- Self-cleaning
- 15 minutes per use
- Fully accessible
- Maintained twice daily
- New APT will be free of charge and have a bottle filler on the side of the unit
- New APT has smaller footprint with revised clearance requirements

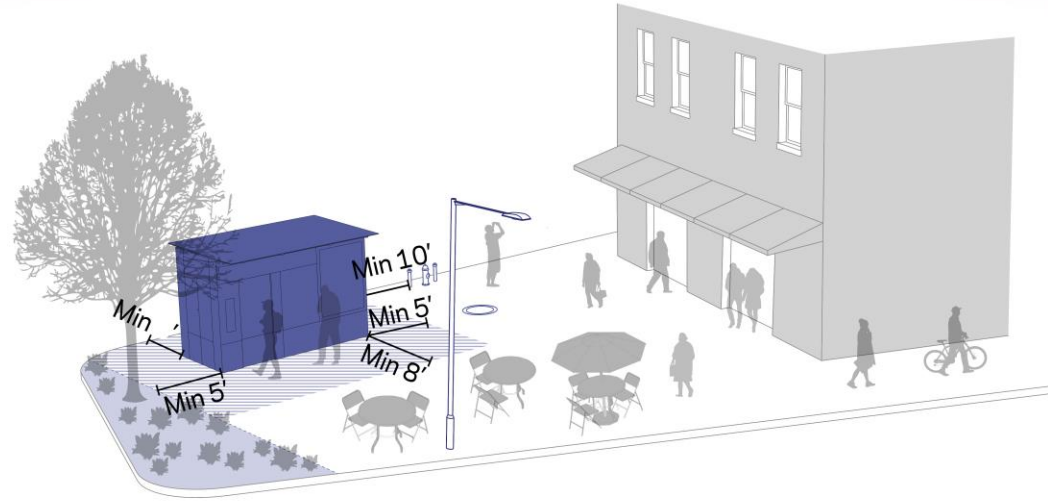
APT Amended Design

Unit Exterior and Specs



APT Site Specifications

- Street level clearances
 - 8' in the front
 - 5' on the sides
 - 3' in the back
- Underground clearance
 - 5-6' for utility and water connections.
- New pump system will allow placement in or near flood zones
- Footprint is smaller than a sedan size car



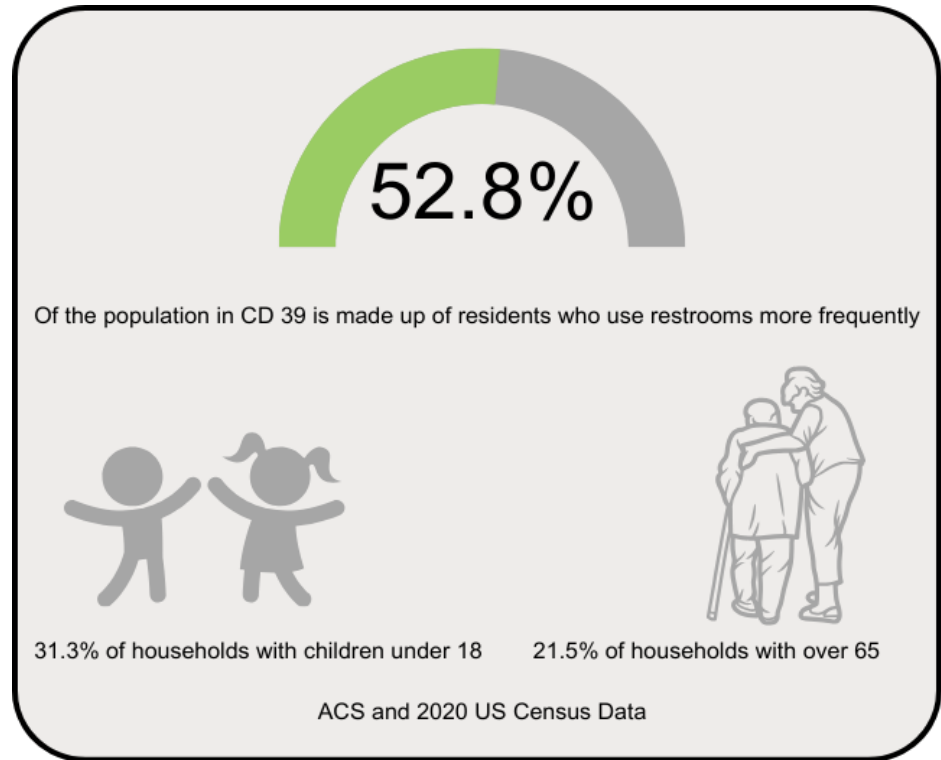
APT Approval Process

- Approvals Needed
 - Community Board
 - Council Member
 - Speaker of the Council
 - Mayor
 - PDC
- Sites require engineering review

Location Benefits

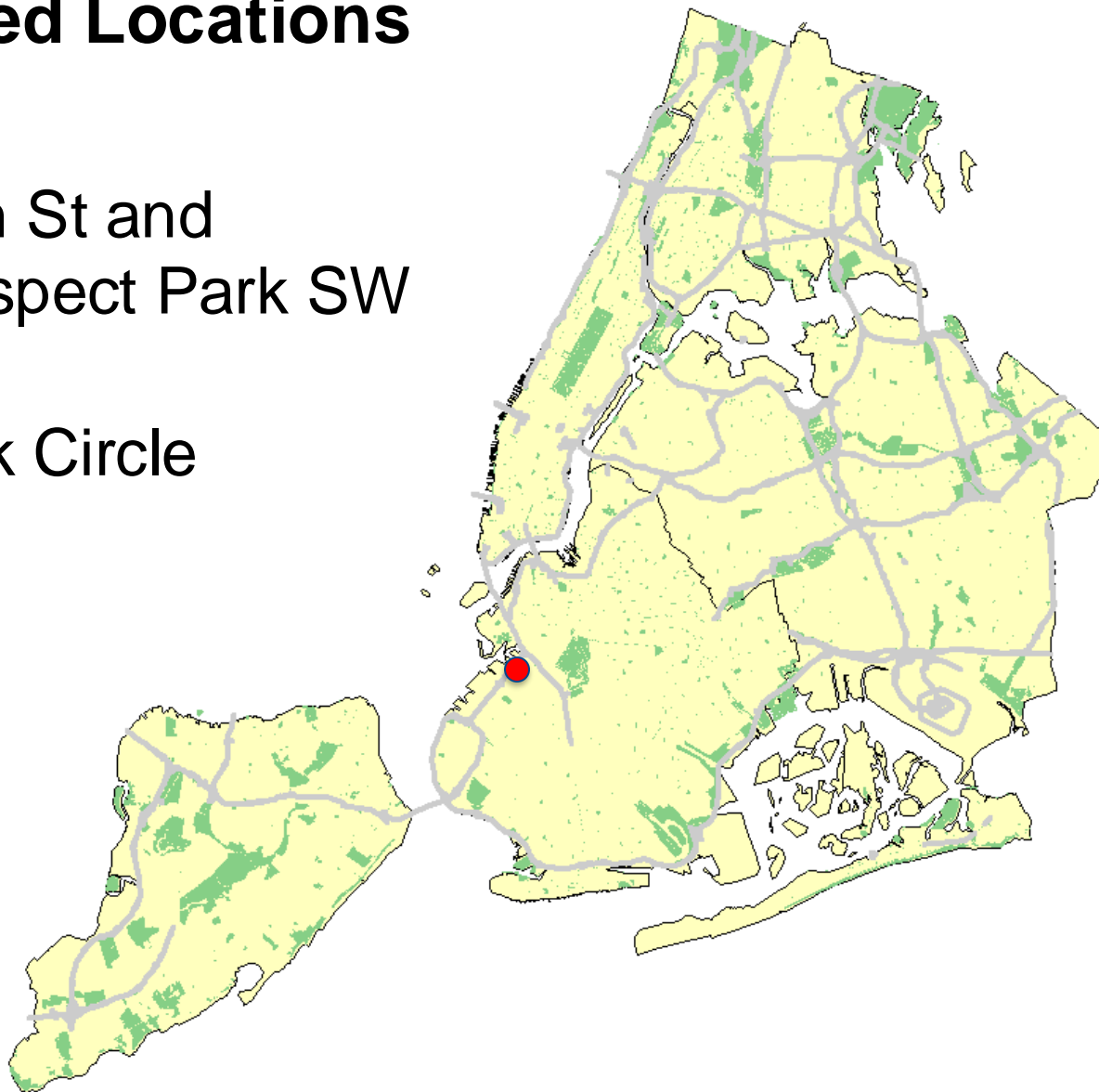
Potential Users

- Park Goers
- Little Leaguers
- Joggers
- Cyclists
- Local Residents
- Pedestrians
- Tourists



Proposed Locations

- 16th St and Prospect Park SW
- Park Circle



Proposed Location: 16th St and Prospect Park SW

Aerial View



Proposed Location: 16th St and Prospect Park SW

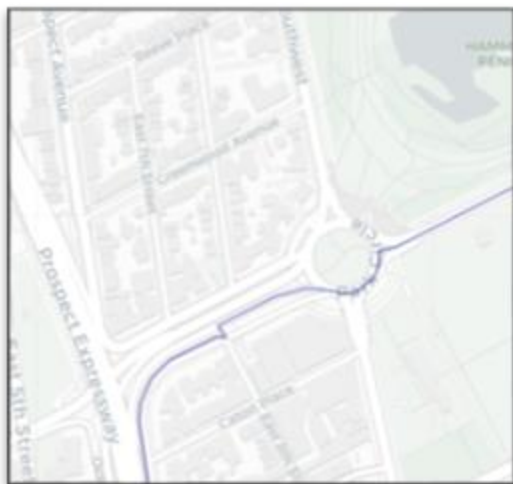


Proposed Location: 16th St and Prospect Park SW



Proposed Location – Park Circle

- On Park Circle sidewalk, near Coney Island Ave
- Meets initial site criteria
- Needs engineering review
- In CD 39, bordering with CD 40



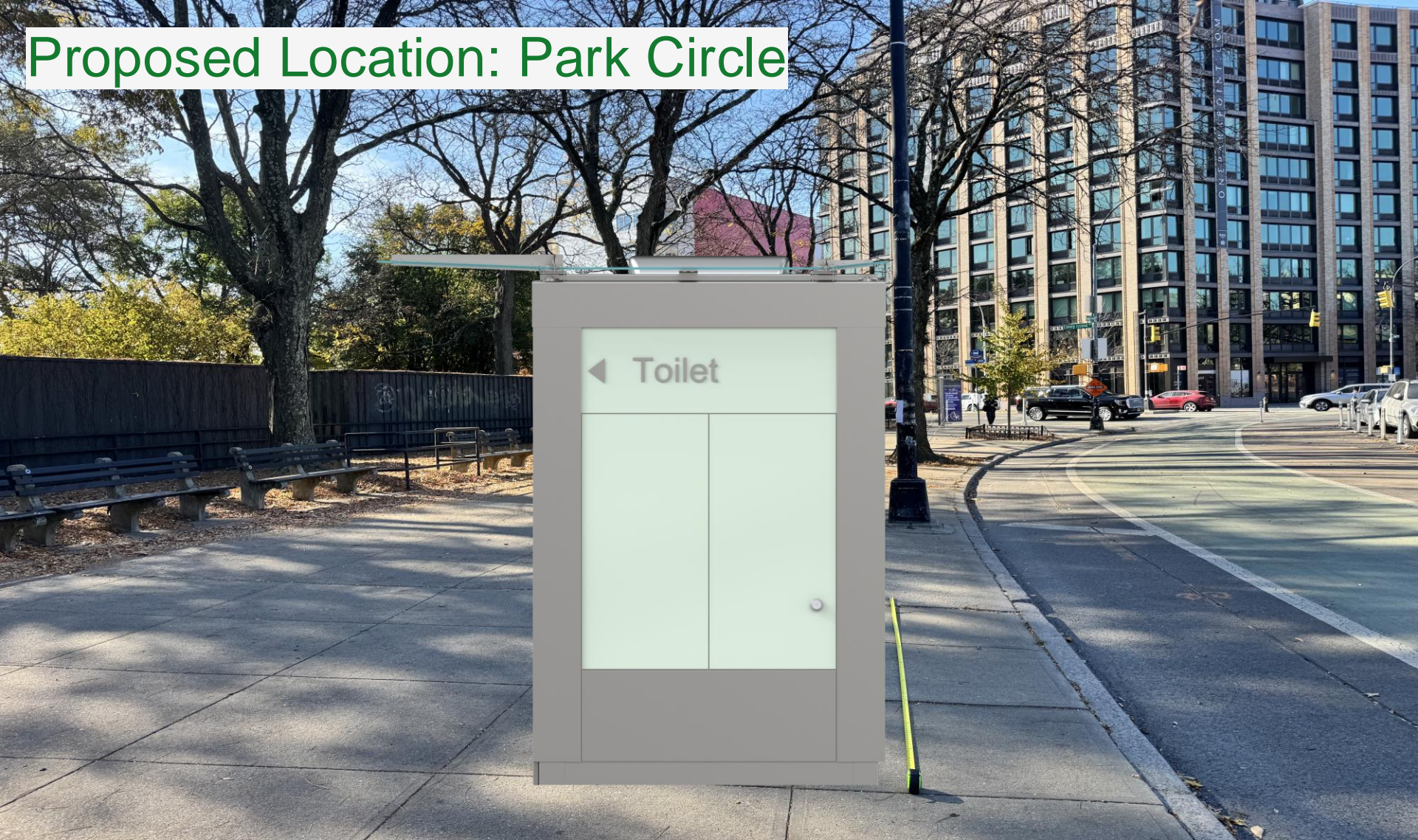
- Near NYPD station, but not in way of driveways

Proposed Location – Park Circle

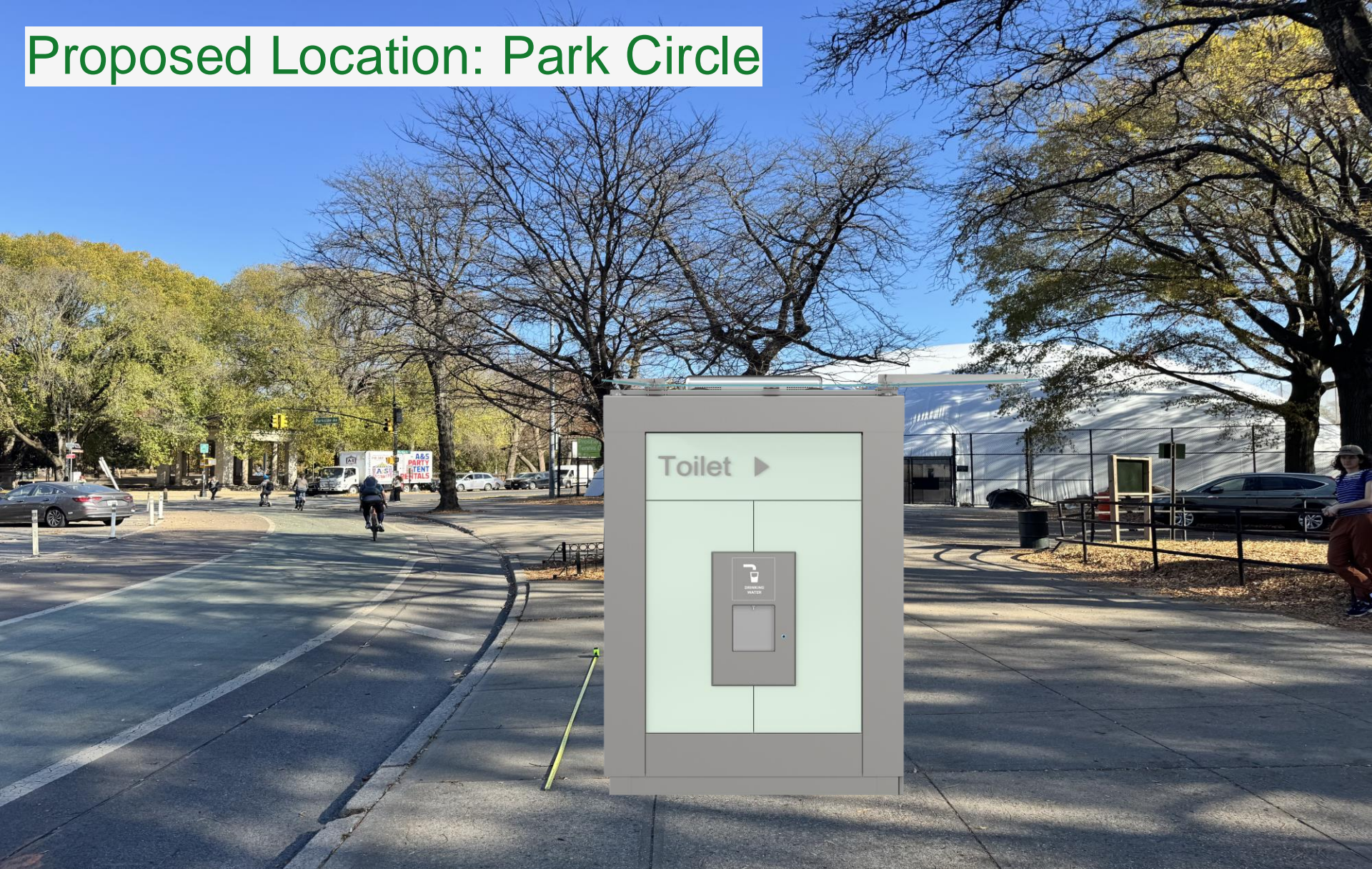
Aerial View



Proposed Location: Park Circle



Proposed Location: Park Circle



Next Steps

- Community Board Presentation and Approval
- CM Approval Letter
- Other Approvals

THANK YOU!

Questions?



NYC DOT



NYC DOT



nyc_dot



NYC DOT

APPENDIX

Other nearby locations deemed not feasible

- Bartel-Pritchard Square
 - MTA clearance, PDC concerns
- Prospect Park W and 10th St
 - Has potential issues with underground clearance for transit
 - Parks restroom nearby at Harmony playground







PROPOSED LOCATION

With Dimensions

