



UNIVERSAL DESIGN IN NYC PARKS

City of New York Parks & Recreation
Capital Projects Division

Chris Noel
Accessibility Coordinator

Parks

ACCESSIBLE DESIGN:

a design process in which the needs of people with disabilities are specifically considered

UNIVERSAL DESIGN:

the practice of designing products that can be used by the widest range of people possible

Universal design goes beyond accessible design by upholding the idea that all new environments and products should be usable to everyone regardless of their age, ability, or circumstance.

Source: <http://www.washington.edu/doit/Faculty/articles?337>



NYC Parks

UNIVERSAL DESIGN IN NYC PARKS | Definitions



The ADA provides much needed access, but accessibility solutions may be last-minute additions that are unattractive and stigmatizing to users.



Universal design incorporates accessibility into every stage of the design process, so that solutions are attractive and useful for everyone.

Source: http://www.universaldesign.com/index.php?option=com_content&view=article&id=327:what-is-universal-design&catid=2196:universal-design&Itemid=113



NYC Parks

UNIVERSAL DESIGN IN NYC PARKS | Accessible Design vs. Universal Design

PARKS' UNIVERSAL FEATURES



NYC Parks

UNIVERSAL DESIGN IN NYC PARKS



Amphitheater Seating



ADA Picnic Table



Benches with Backs and Arms



Tables



Bench with Companion Seating



Bench with Companion Seating





High Legibility, Accessible Height

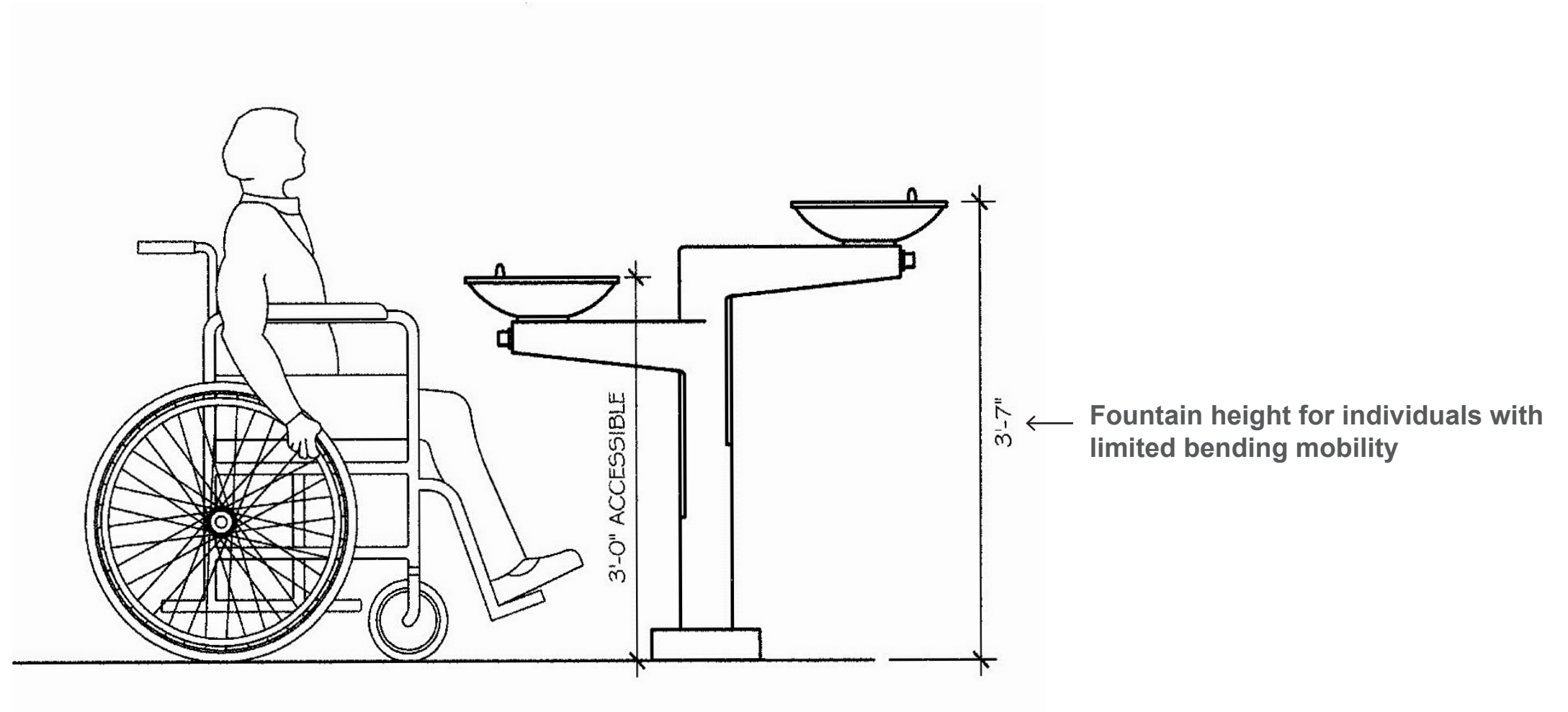


Accessible Pathway Indicator



Truncated Domes

Drinking fountains can be either one fountain with two bowls at two heights or two separate fountains of different heights.





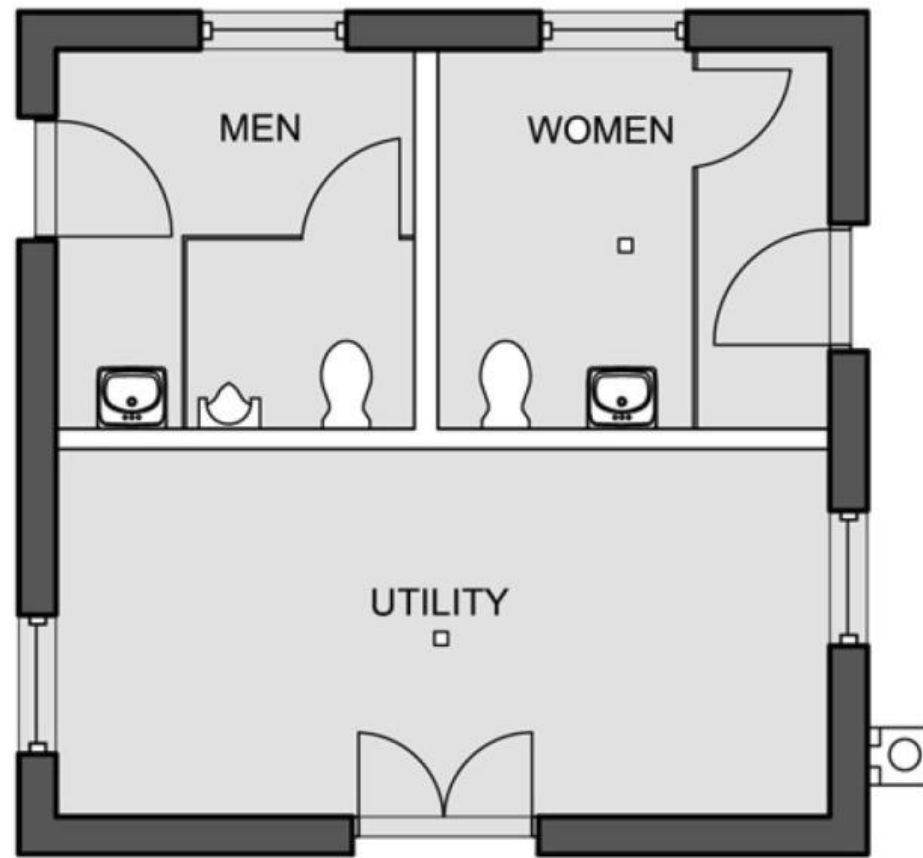
Water Bottle Fillers



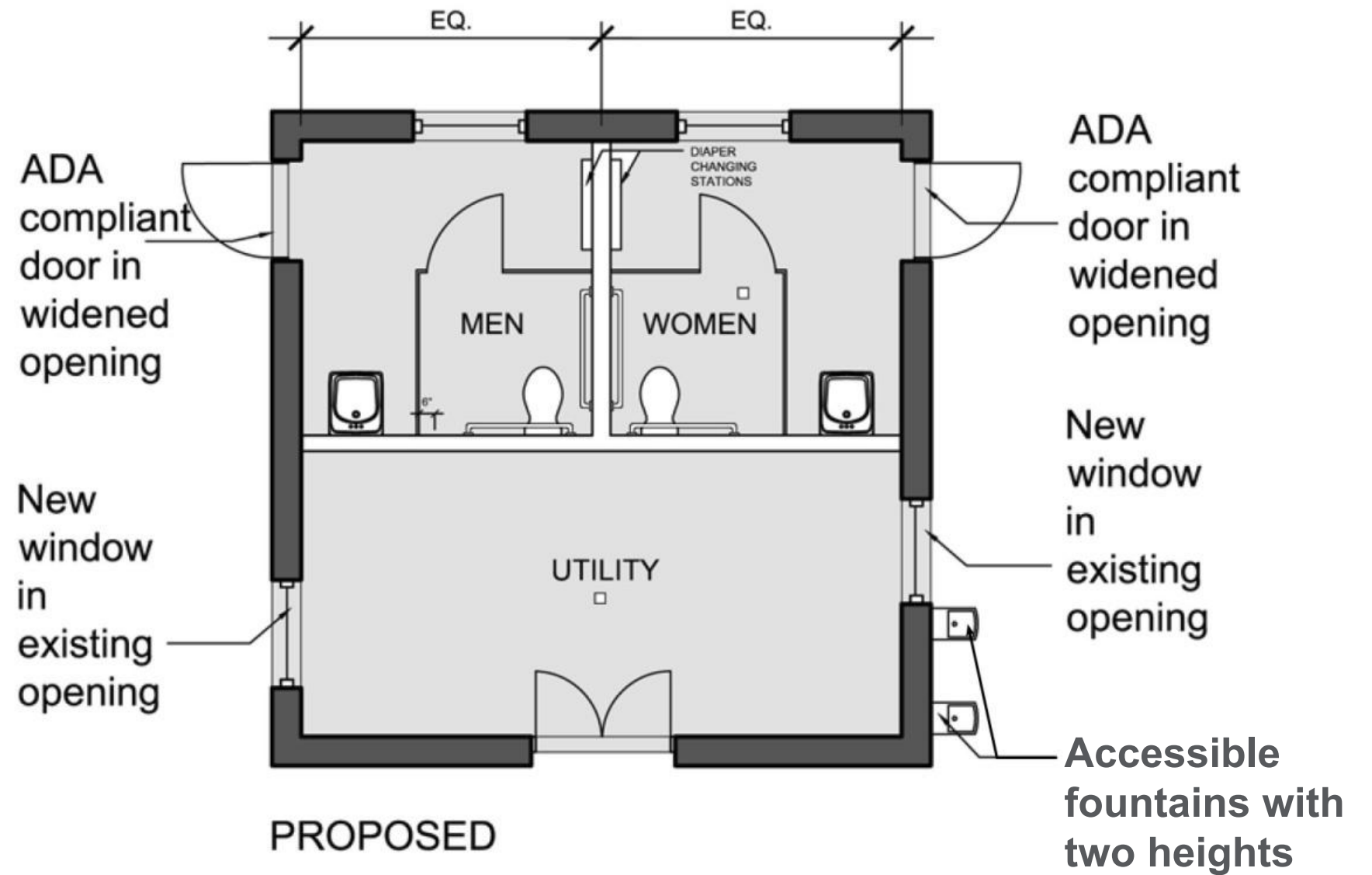
Type E Hi-Lo Fountain



Type F Hi-Lo Fountain



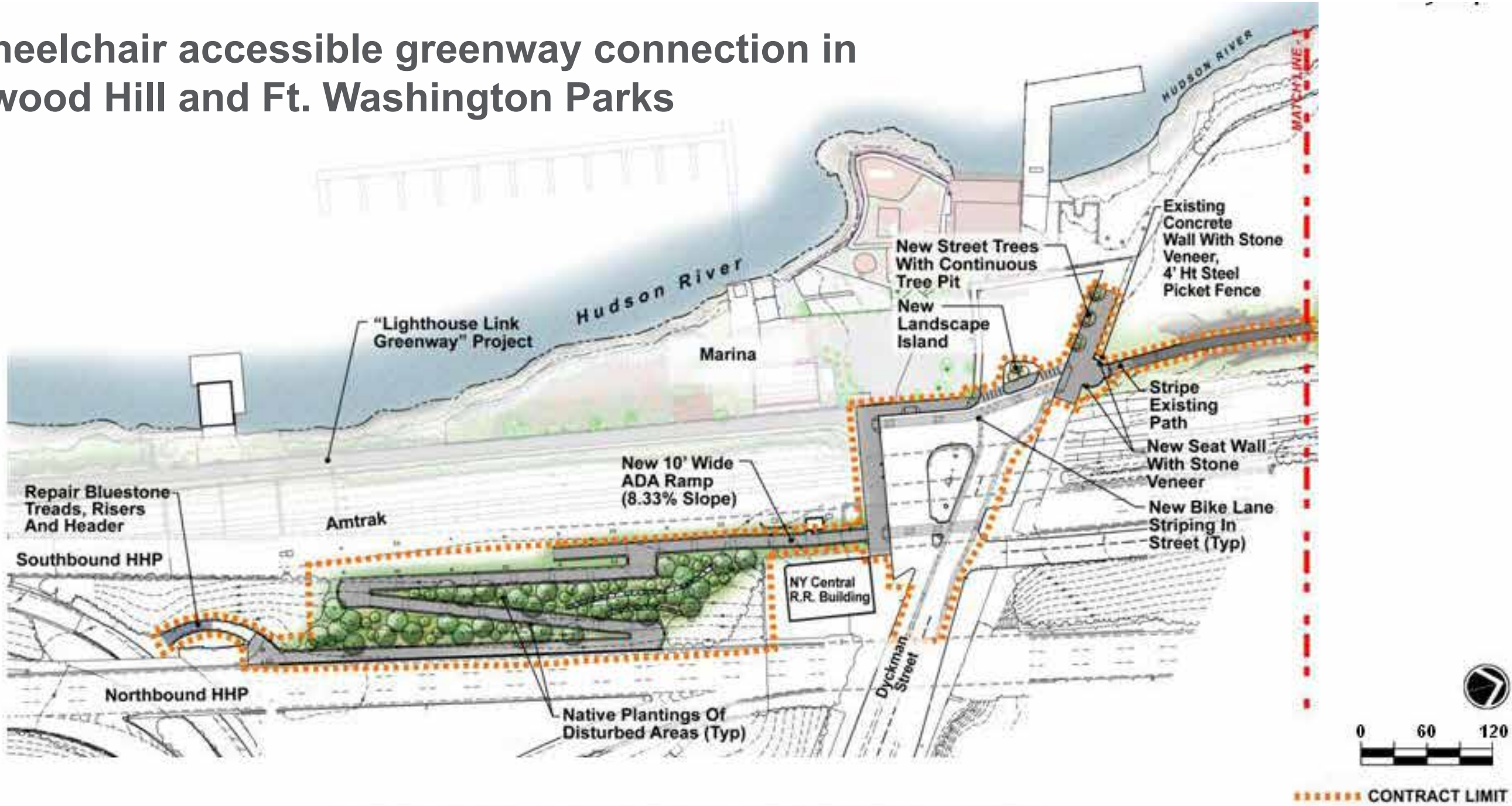
EXISTING



PROPOSED

Drinking fountains attached to comfort stations for 4 season use.

Wheelchair accessible greenway connection in Inwood Hill and Ft. Washington Parks



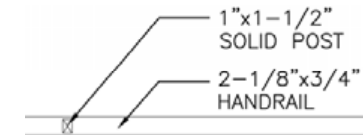


Morningside Park, Playground 123

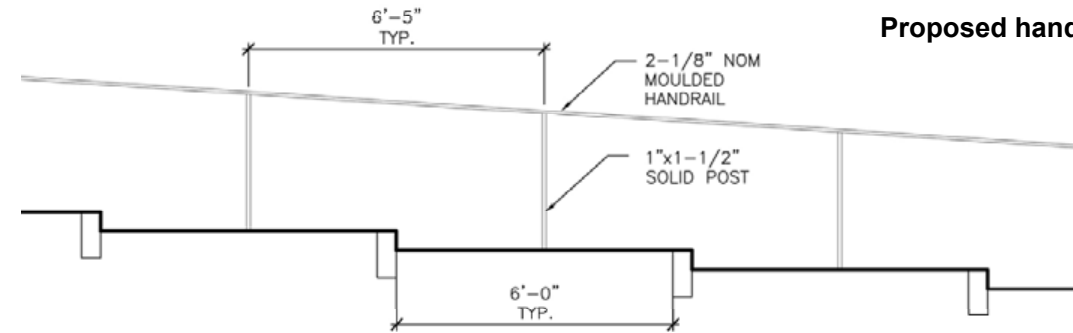


Morningside Park, Playground 123

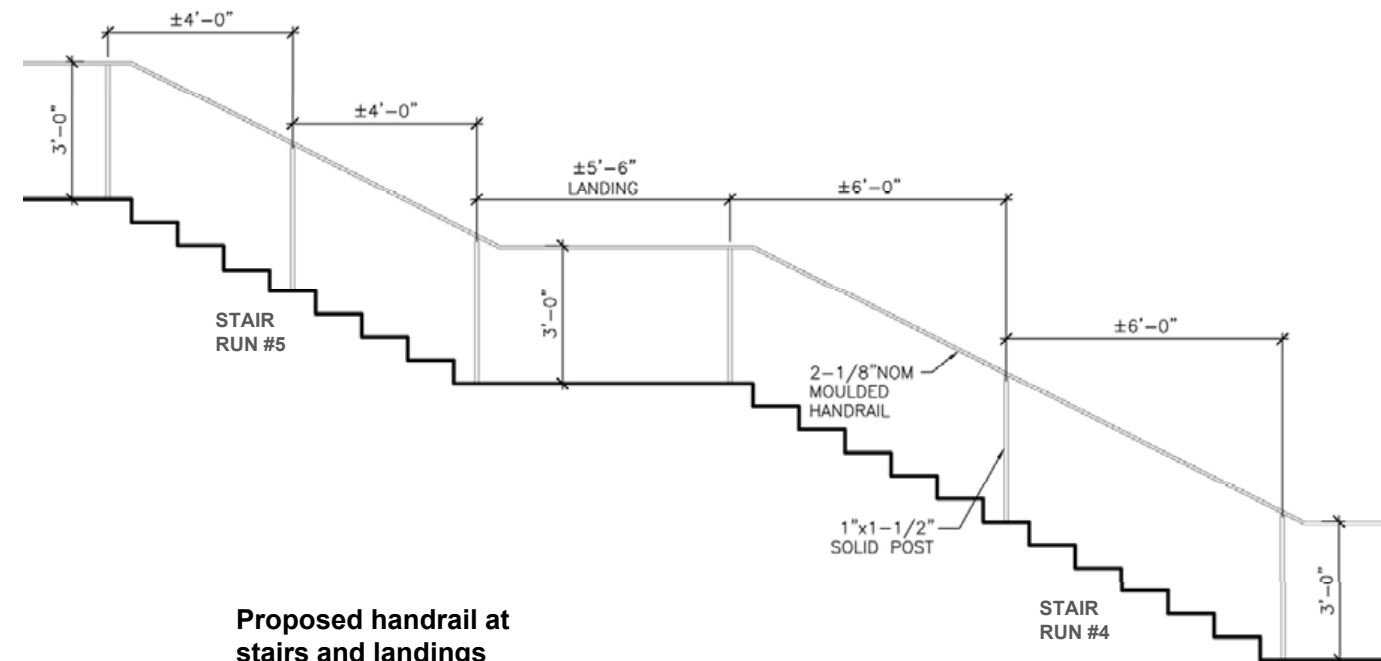




Proposed handrail detail



Proposed handrail at ramp

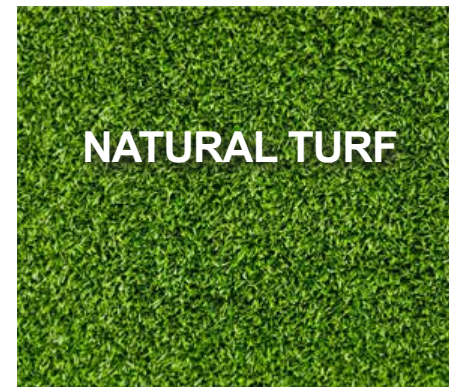


Proposed handrail at stairs and landings

ACCESSIBLE SURFACING



SEMI-ACCESSIBLE



NOTE: Accessibility of both natural and synthetic turf depends on maintenance - the slope must be within guidelines and the turf must be firm. To test this, Parks uses a rotational penetrometer.

INACCESSIBLE SURFACING



BEACHES AND BOARDWALKS



NYC Parks

UNIVERSAL DESIGN IN NYC PARKS





UNIVERSAL DESIGN IN NYC PARKS | Rockaway Accessible Modulares

BUILDINGS AND HISTORIC SITES



NYC Parks

UNIVERSAL DESIGN IN NYC PARKS



BEFORE



AFTER



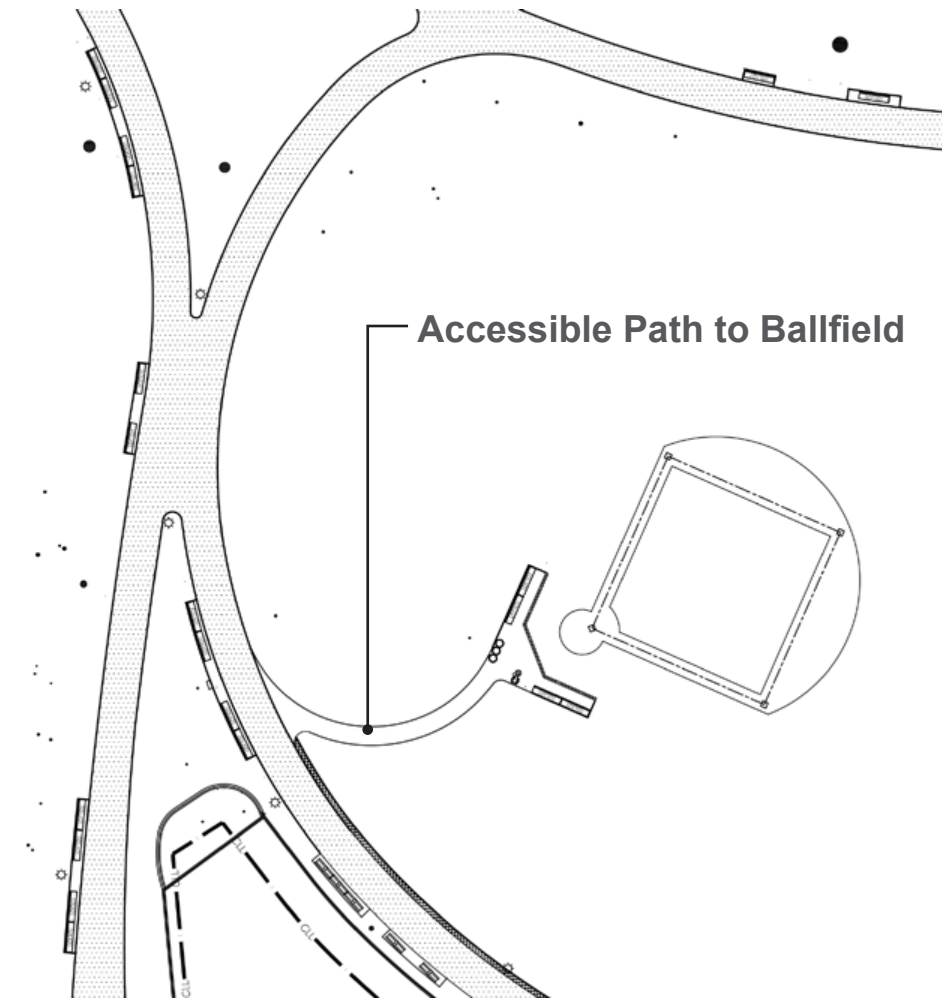
BALLFIELDS



UNIVERSAL DESIGN IN NYC PARKS



J. J. Walker Park Ballfield



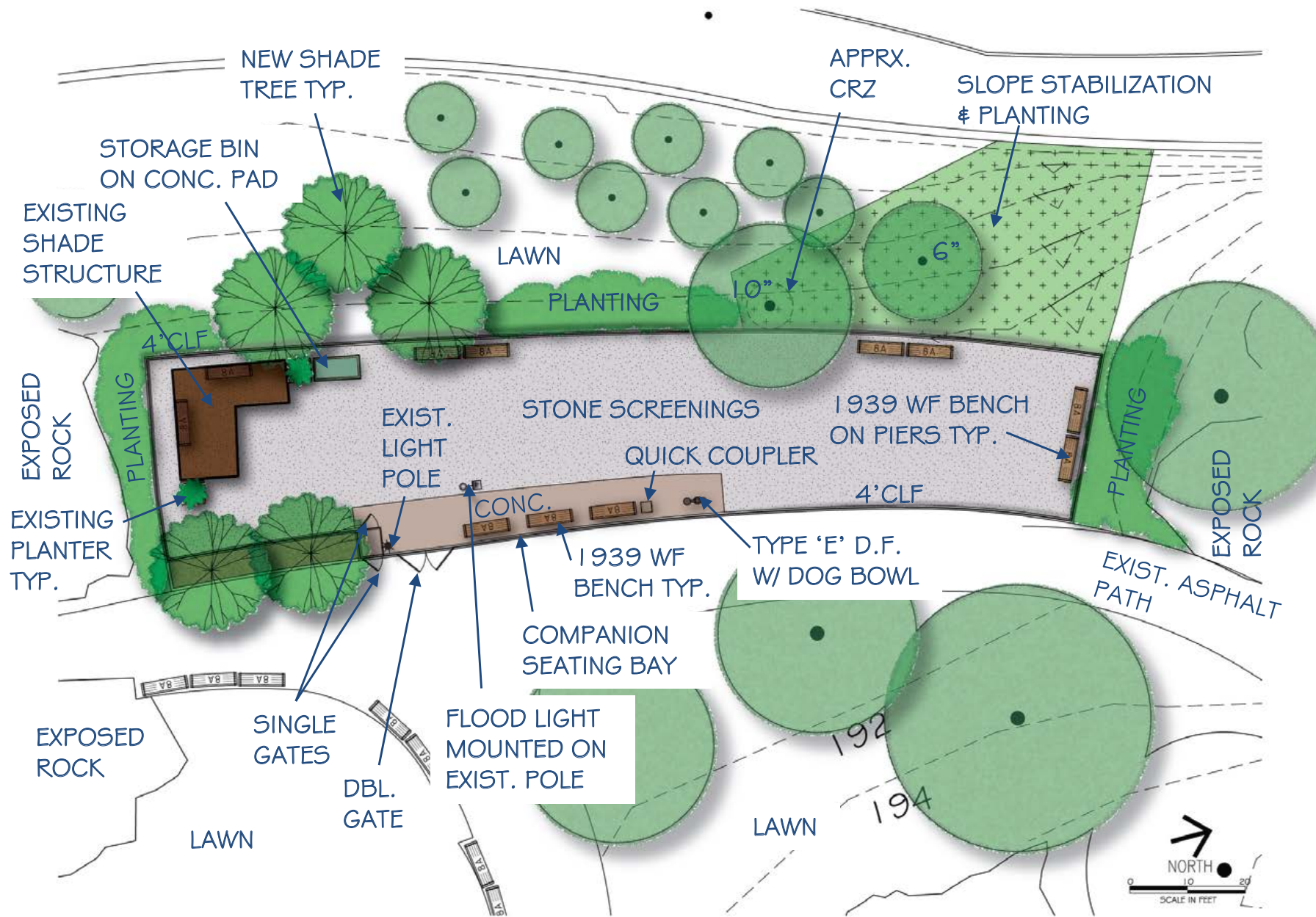
Forest Park Ballfield near the Overlook

DOG RUNS

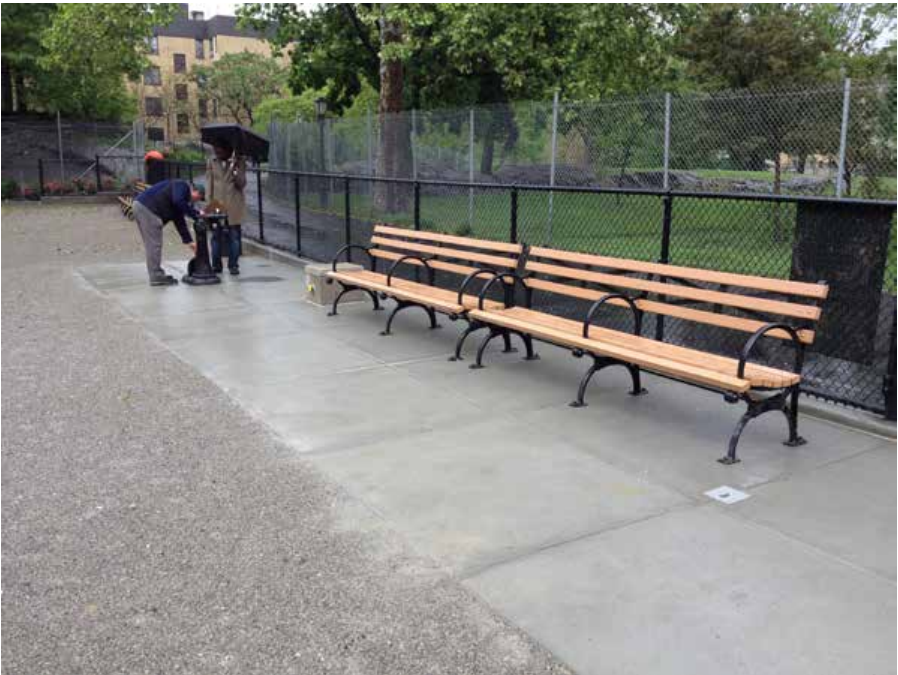


NYC Parks

UNIVERSAL DESIGN IN NYC PARKS



J. Hood Wright Park Dog Run



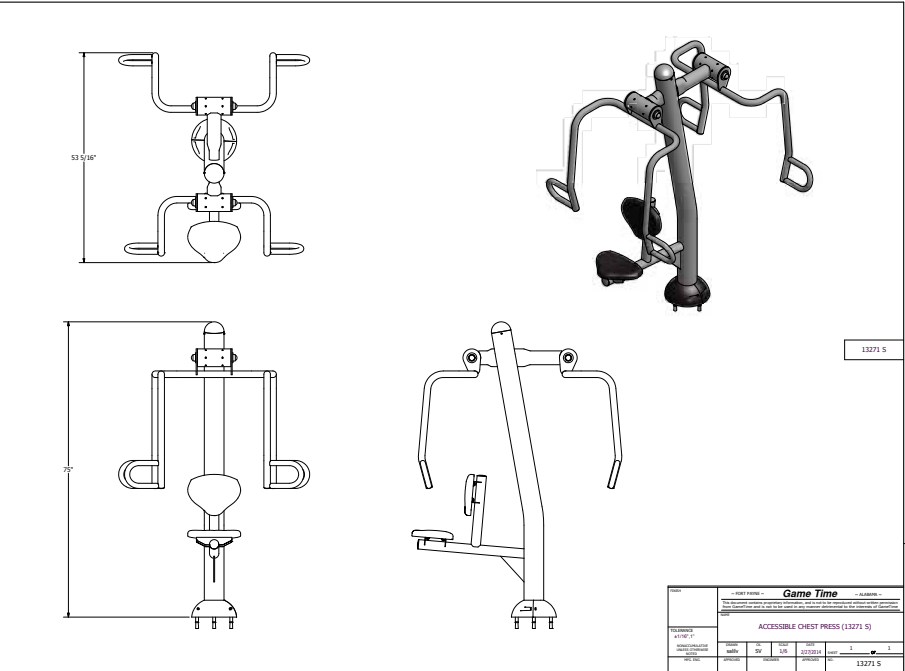
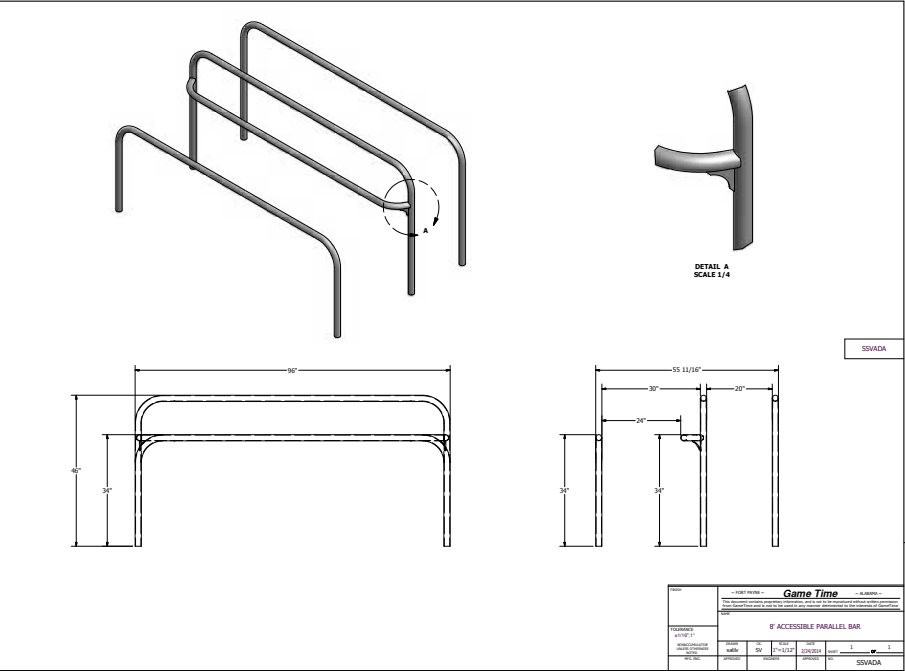
Accessible Surface in Dog Run



OUTDOOR GYMS



UNIVERSAL DESIGN IN NYC PARKS



UNIVERSAL DESIGN IN NYC PARKS | ADA Fitness Equipment

COMMUNITY GARDENS



NYC Parks

UNIVERSAL DESIGN IN NYC PARKS



Robert L. Clinkscales Playground and Community Garden

PLAYGROUNDS



NYC Parks

UNIVERSAL DESIGN IN NYC PARKS



River Avenue Playground



Playground 123



Luther Gulick Playground



Laurelton West Playground



UNIVERSAL DESIGN IN NYC PARKS | Using Grade Change to Provide Access to Higher Decks of Play Units



Indian Road Playground - Partial Ramping

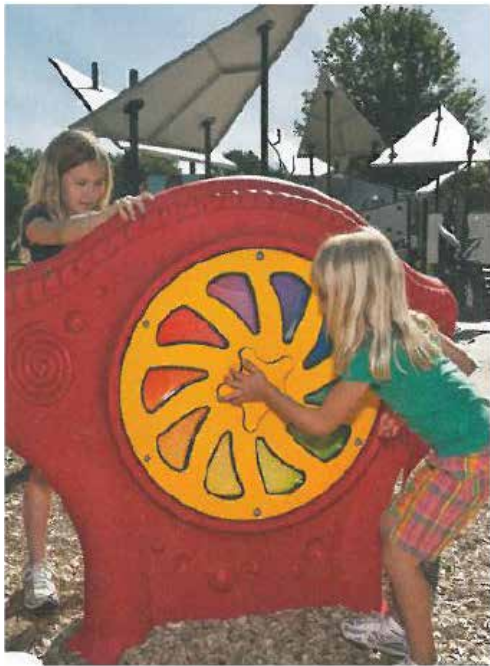


Laurelton West Playground - Full Ramping





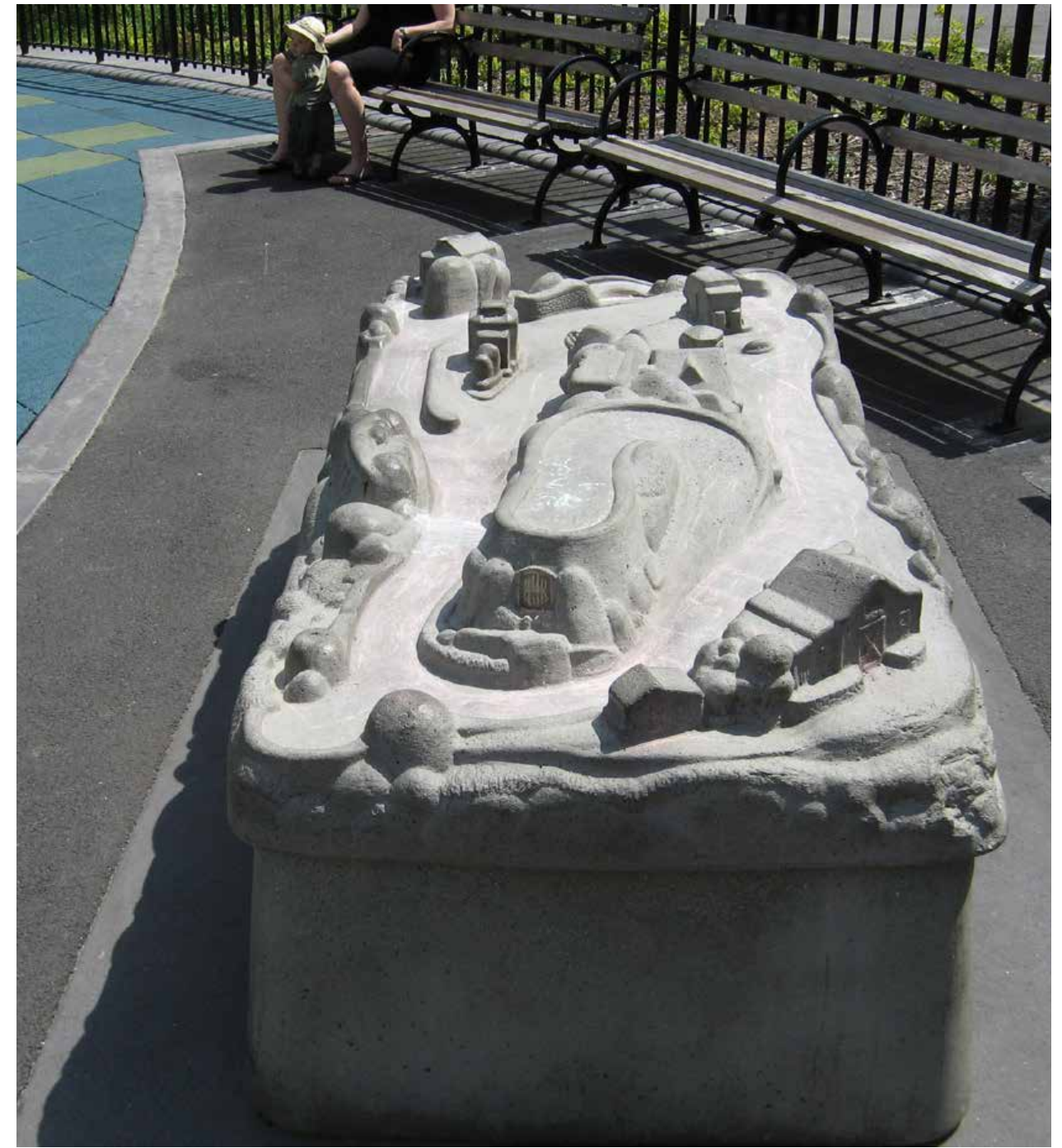




SENSORY PLAY

- Children discover their world through all senses (touch, taste, sight, smell and hearing, as well as balance and spatial relations)
- Playgrounds can offer sensory-rich experiences that will help in the development of children of all abilities











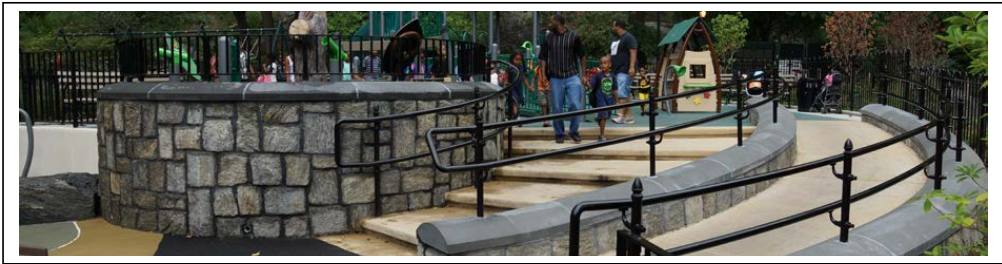
Accessible Places for Quiet or Imaginative Play



UNIVERSAL DESIGN FEATURES FOR PLAYGROUNDS

Morningside Playground 123

Kids of all ages and abilities will enjoy this reconstructed playground which has a nature theme that harkens back to the original Olmsted and Vaux design.



Map it: we get the link Additional photos: get the link

Is there a Comfort Station? Yes No Is it accessible? Yes No

- Requirements
- 1. Accessible Route to the playground from street.
 - 2. Ground Level Play Components for a range of ages and developmental skill levels.
 - 3. Accessible Protective Surfacing around play equipment.
 - 4. Transfer System - mount/ dismount opportunity for wheelchair users on the equipment.
 - 5. Benches with a paved clear space adjacent to benches (companion seating).
 - 6. Accessible Drinking Fountain - include if any drinking fountains are specified.
- Recommendations
- 7. Accessible Multi-purpose Table along an accessible route.
 - 8. Child Safety and Security Fencing and views of play area from most benches.
 - 9. Multisensory experiences textures, scents, hearing feature in equipment/ play area.
 - 10. Visual Contrast for partially sighted children on equipment/play area.
 - 11. Social Gathering Areas that are accessible with shared play activities.
 - 12. Quiet Cozy Spaces where children can feel emotionally secure but visible.
 - 13. Accessible Natural and Landscaped Areas for wheelchairs to landscape plantings.
 - 14. Elevated Ramp Experience for Wheelchair Users next to ground features with handrail.
 - 15. Shade to provide a mix of sunlight and shade (may be natural or manmade).
 - 16. Signage.
 - 17. Accessible Spray Shower Features on an accessible route.
 - 18. Elevated Sand / Gardening table.
 - 19. Swings with one adaptive seat or a swaying feature.

For additional information, see www.access-board.gov



THE END



UNIVERSAL DESIGN IN NYC PARKS