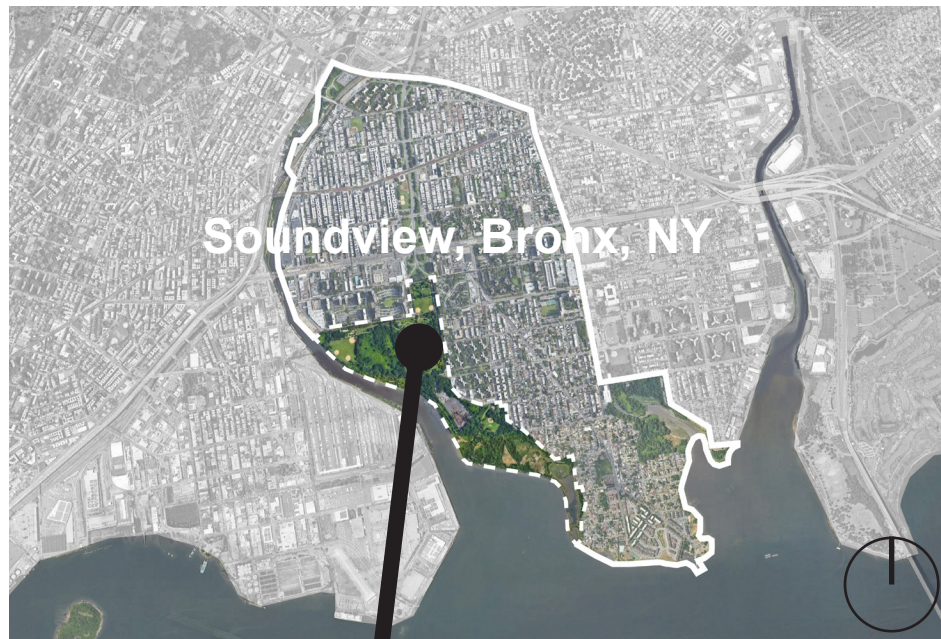




## Soundview Park Recreation Center

Bronx Community Board CB-9 - Nov 13 2024

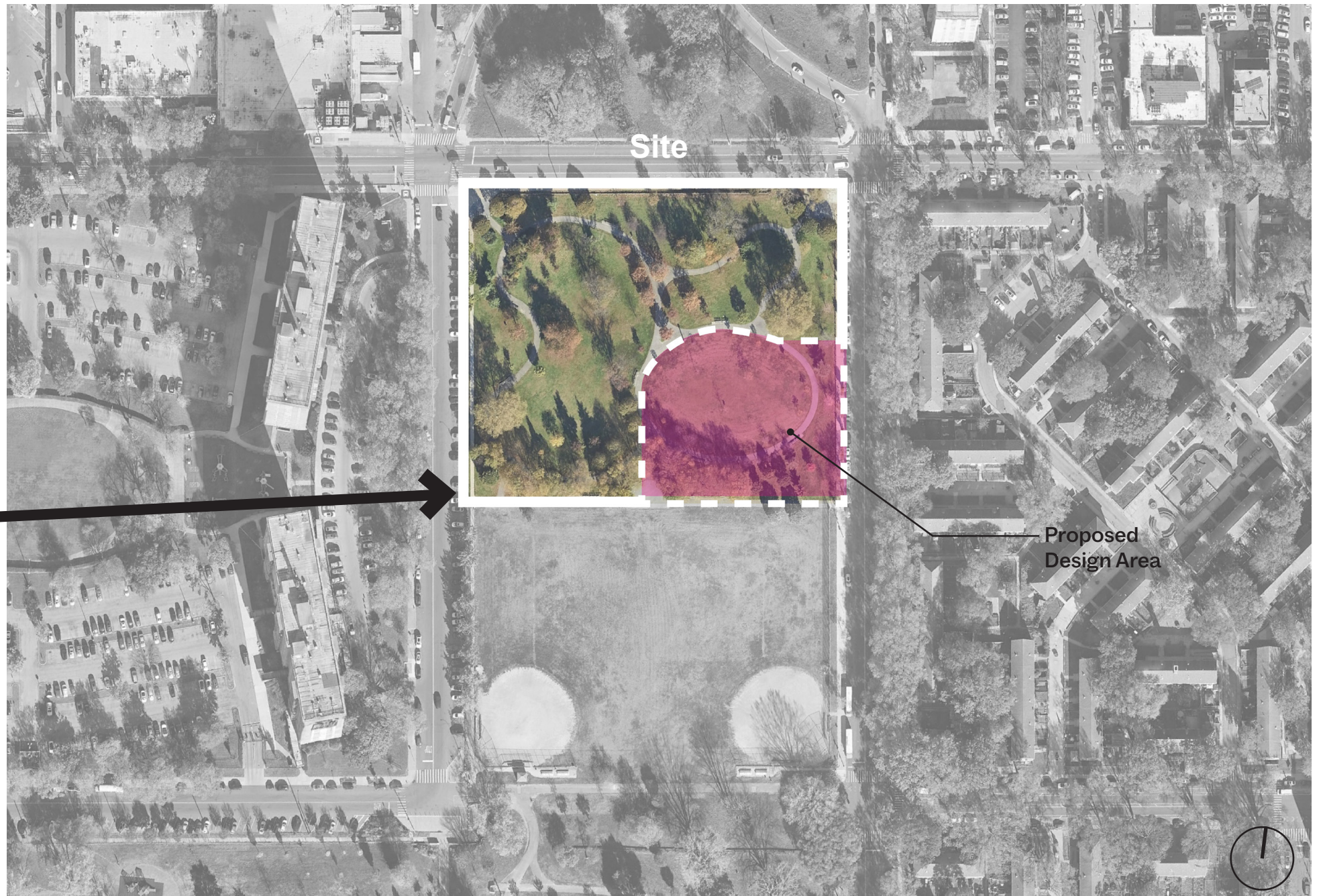




Neighborhood



Park



Site



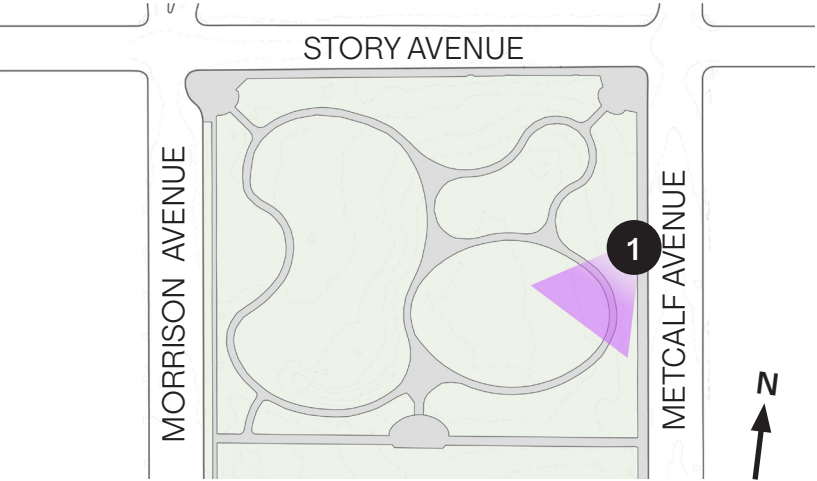
Soundview Park Recreation Center  
Bronx Community Board CB-9 - Nov 13 2024

Location Plans





Sidewalk along east side of Soundview Park project site with low wooden fence



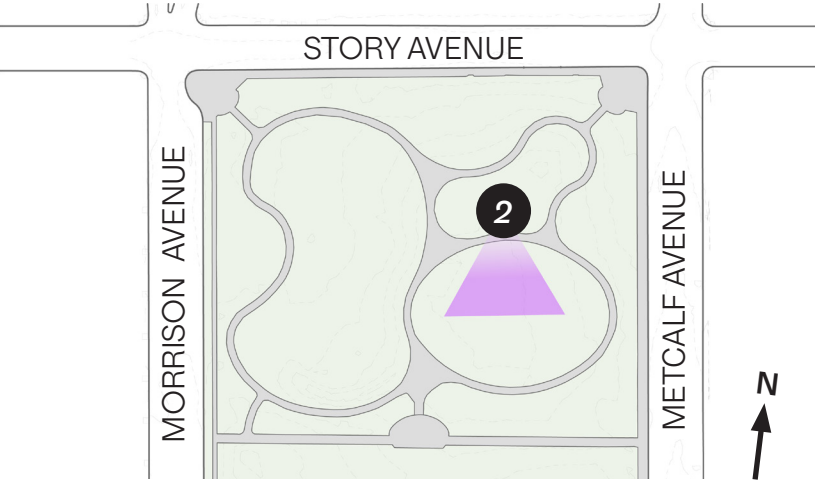
Soundview Park Recreation Center

Bronx Community Board CB-9 - Nov 13 2024





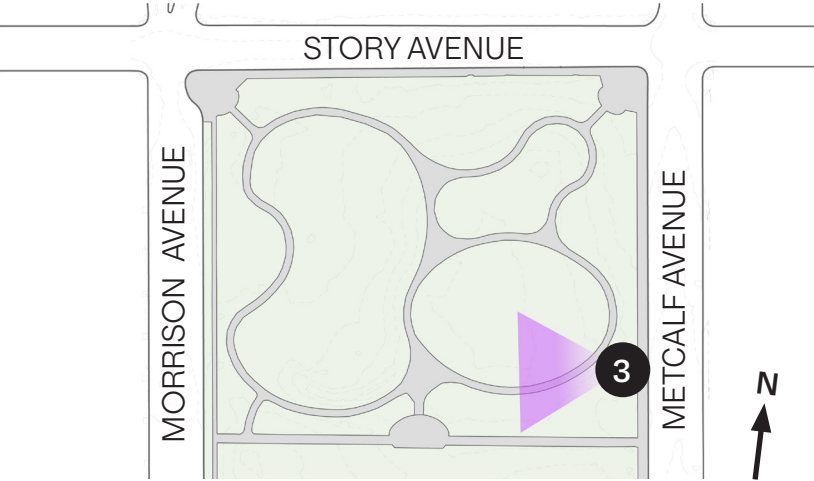
12 - View of Proposed Design Area







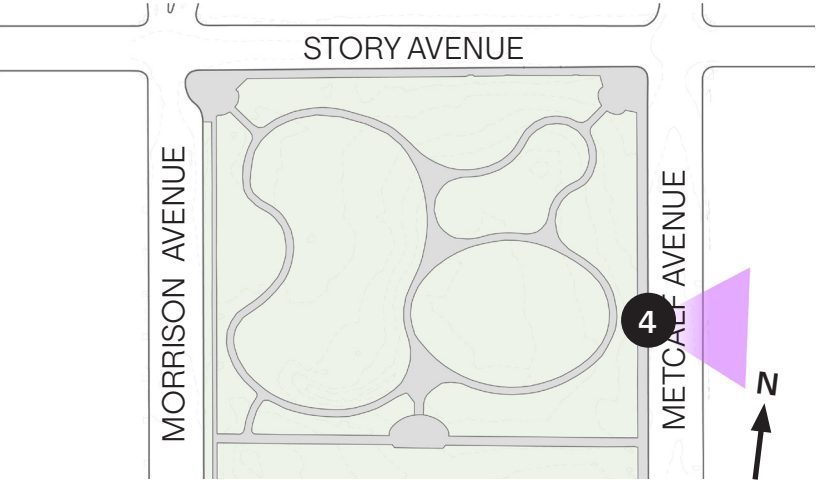
8 - View across Soundview Park project site with adjacent building across Morrison Avenue



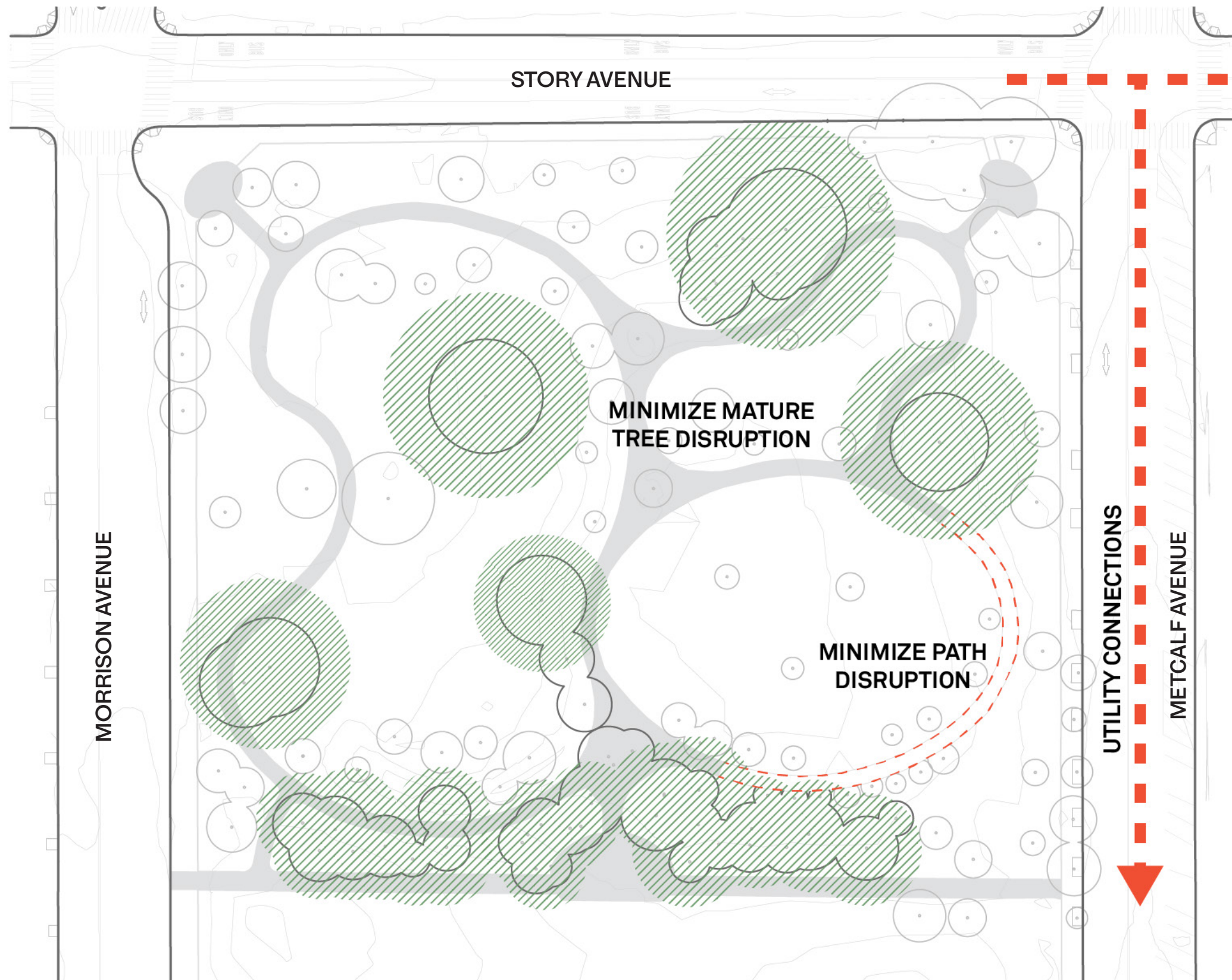








7 - View of housing complex directly adjacent to project site







-  Utility Connections
-  Existing path to be removed
-  Existing path to remain
-  Existing tree root zones



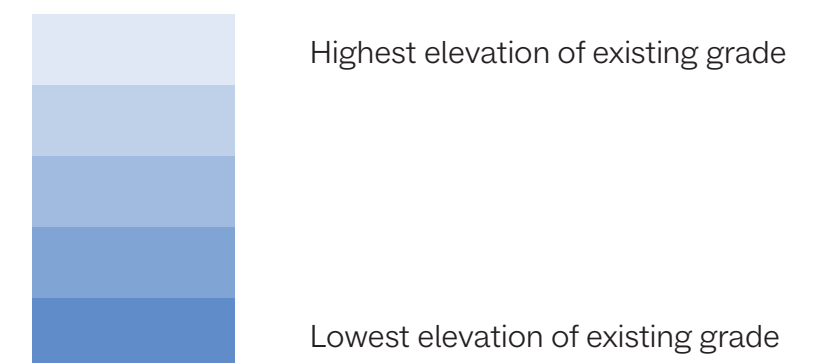
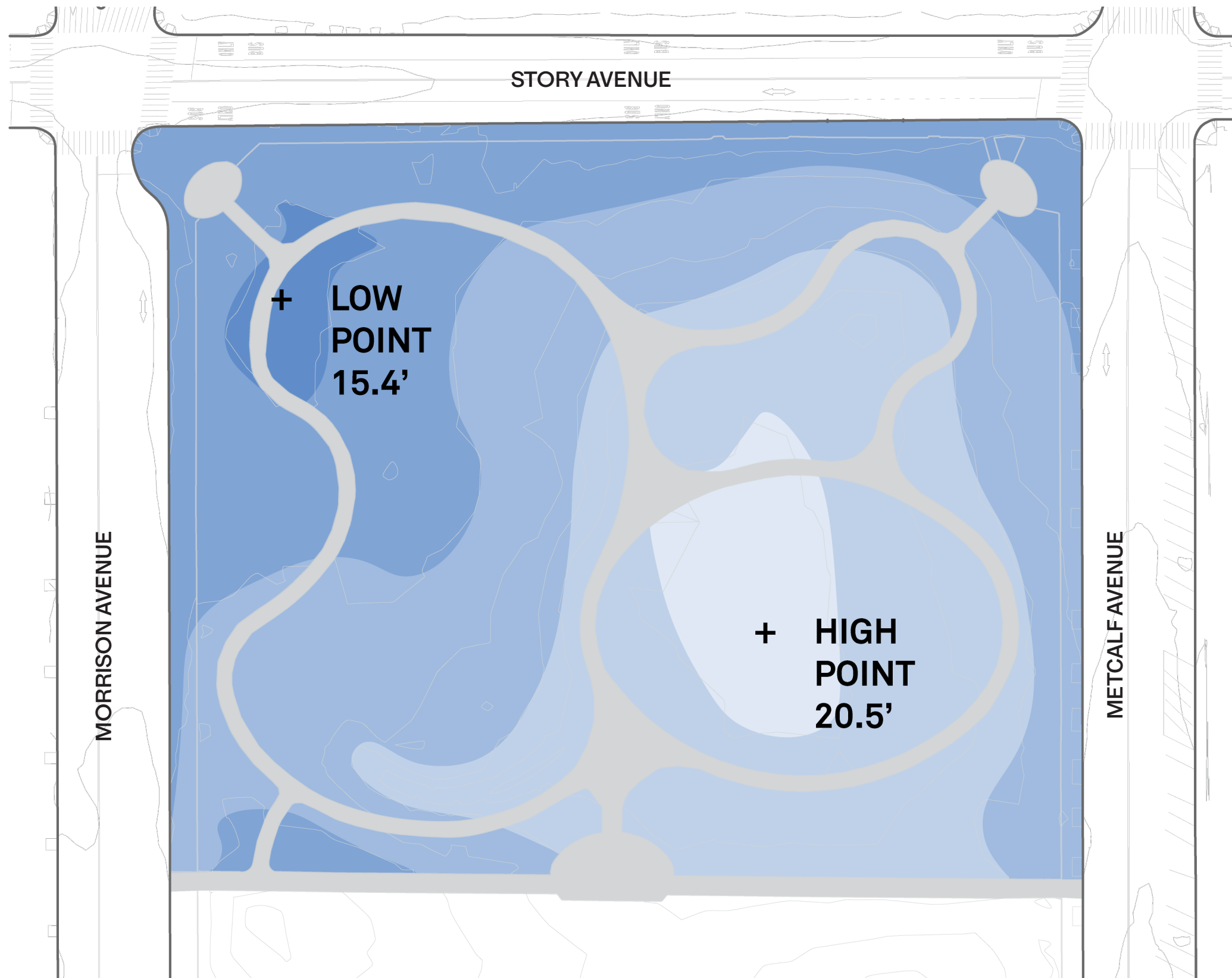
## Soundview Park Recreation Center

Bronx Community Board CB-9 - Nov 13 2024

## Site Considerations - Tree Distribution







Soundview Park Recreation Center

Bronx Community Board CB-9 - Nov 13 2024

Site Considerations - Elevation

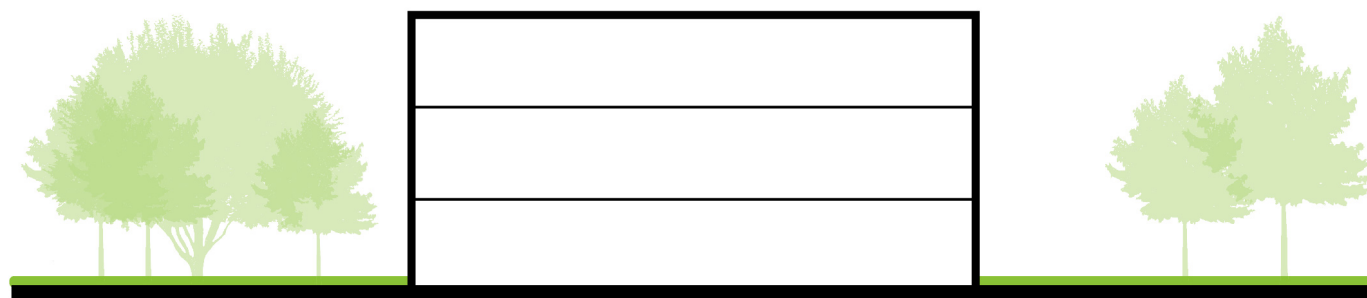




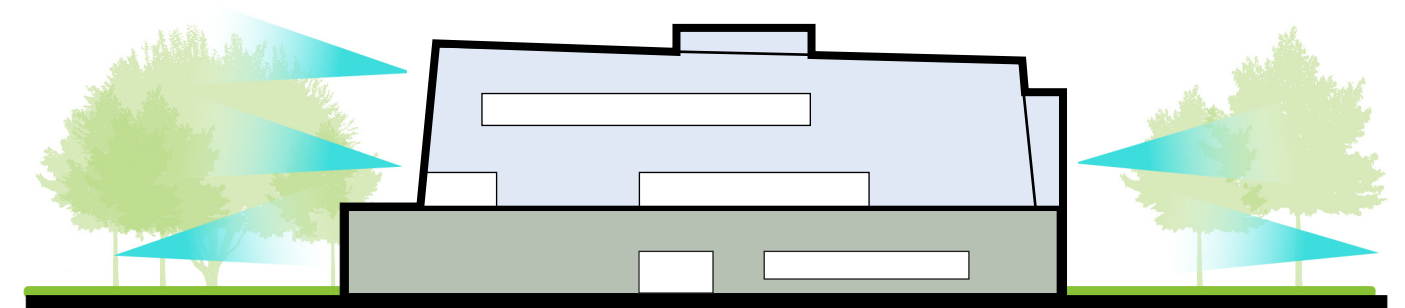
Building in the Park



Park into Building



static, imposing, massive



dynamic, communicative, terraced





LL92/94 Sustainable Roofing Zone:  
Upper & Lower Roofs, Ballasted PV Array

Mechanical Well with Rooftop  
Units for Hybrid GS/WSHP:  
DOAS-ERV and HP's

Parks Vehicle Parking  
and EV Charging Station

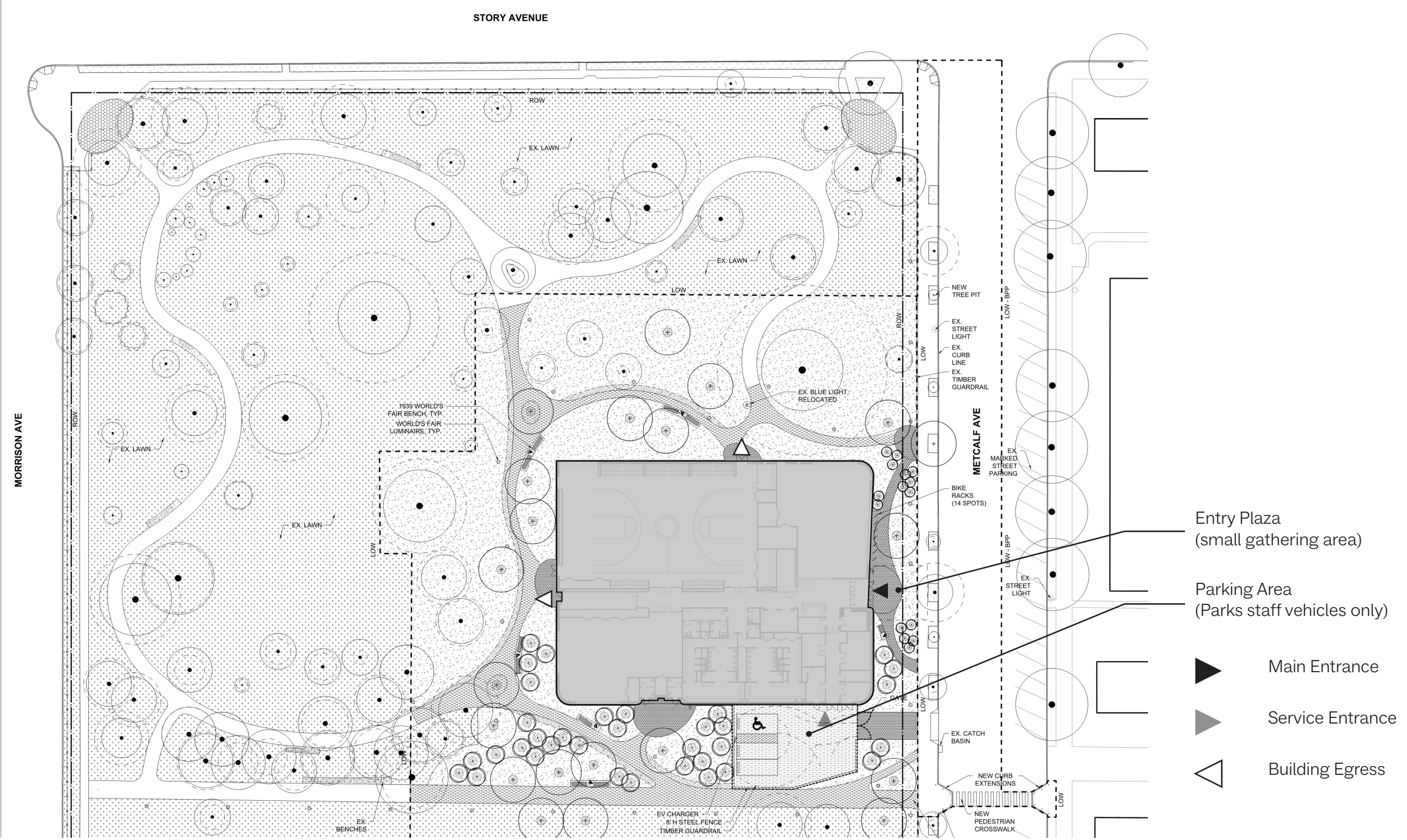
Metcalf Avenue



Soundview Park Recreation Center  
Bronx Community Board CB-9 - Nov 13 2024

Building Axonometric





LEGEND

- ASPHALT
- CIP CONCRETE
- EXISTING LAWN
- TRIFOLIUM PRATENSE (RED CLOVER)
- GROUND COVER
- MULCH
- INFILTRATION STRIP
- EXISTING TREE
- CRITICAL ROOT ZONE
- PROPOSED SHRUB
- PROPOSED TREE

- Entry Plaza (small gathering area)
- Parking Area (Parks staff vehicles only)
- Main Entrance
- Service Entrance
- Building Egress



Soundview Park Recreation Center

Bronx Community Board CB-9 - Nov 13 2024

Landscape Plan



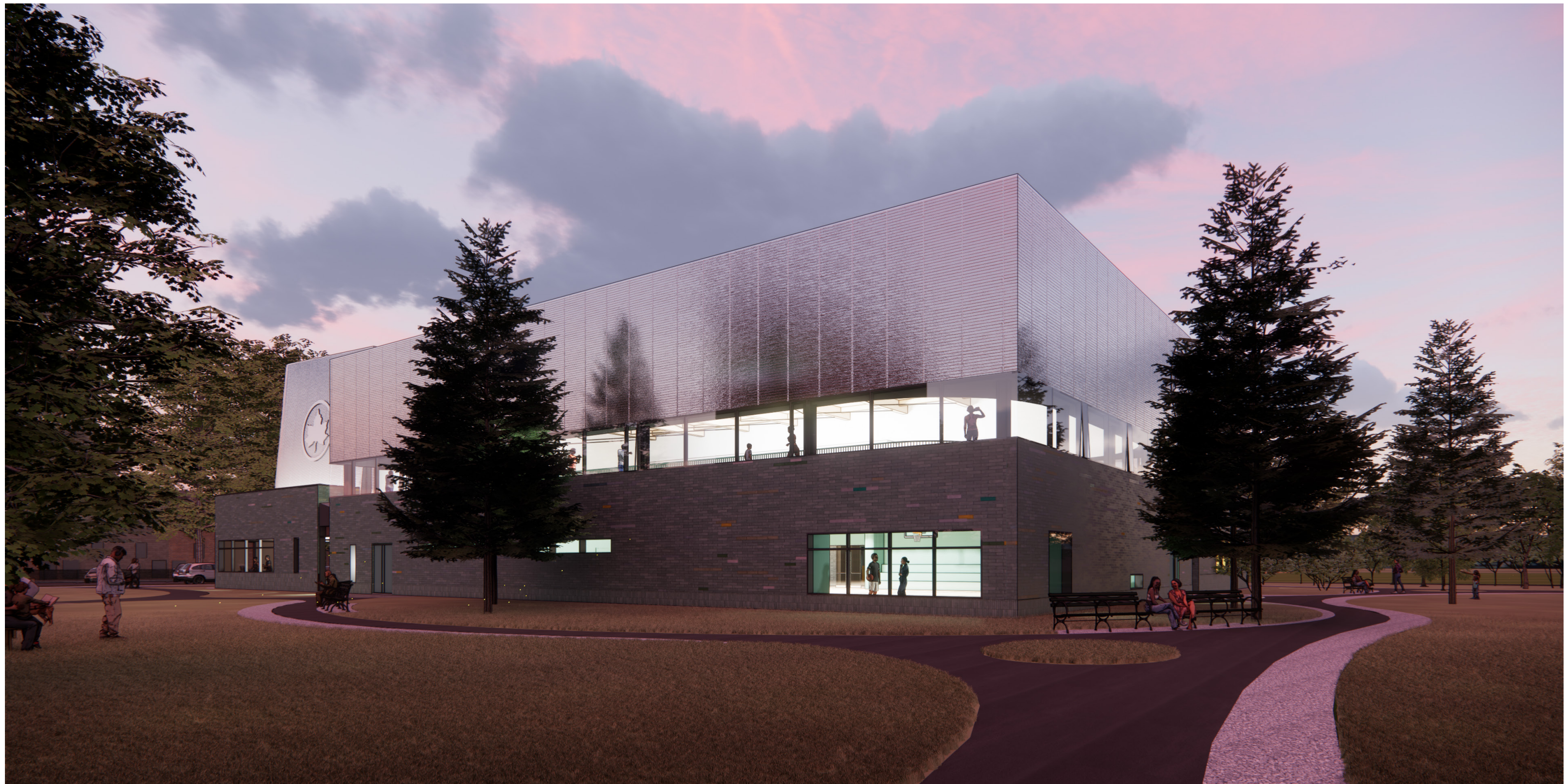




**Soundview Park Recreation Center**  
Bronx Community Board CB-9 - Nov 13 2024

**View from Metcalf Avenue - Northeast**  
Materials and finish color range to be developed





Soundview Park Recreation Center  
Bronx Community Board CB-9 - Nov 13 2024

View from Park - Northwest

Materials and finish color range to be developed





Soundview Park Recreation Center  
Bronx Community Board CB-9 - Nov 13 2024

View from Park - Southwest

Materials and finish color range to be developed

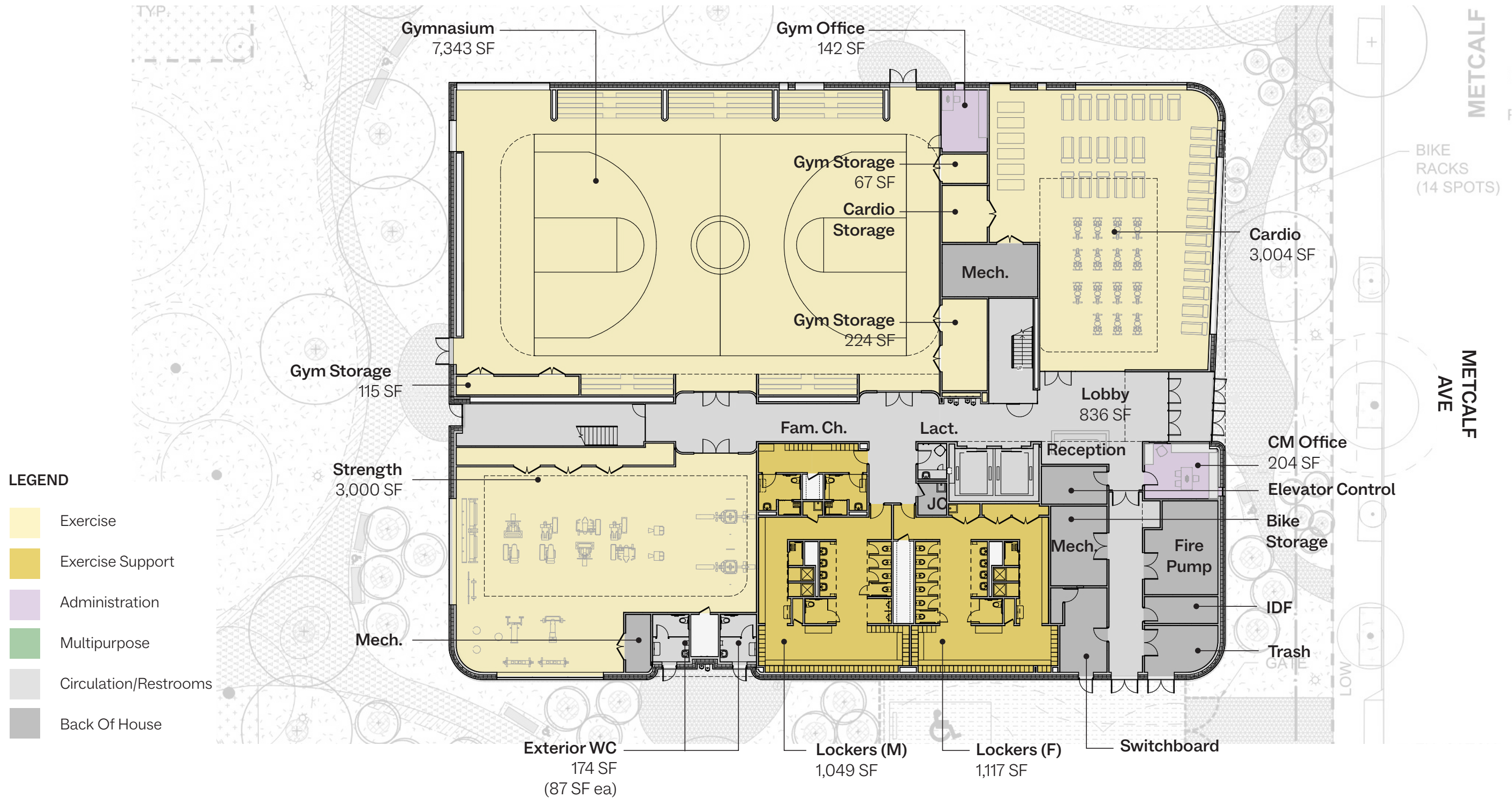




**Soundview Park Recreation Center**  
Bronx Community Board CB-9 - Nov 13 2024

**View from Metcalf Avenue - Southeast**  
Materials and finish color range to be developed





Soundview Park Recreation Center  
Bronx Community Board CB-9 - Nov 13 2024

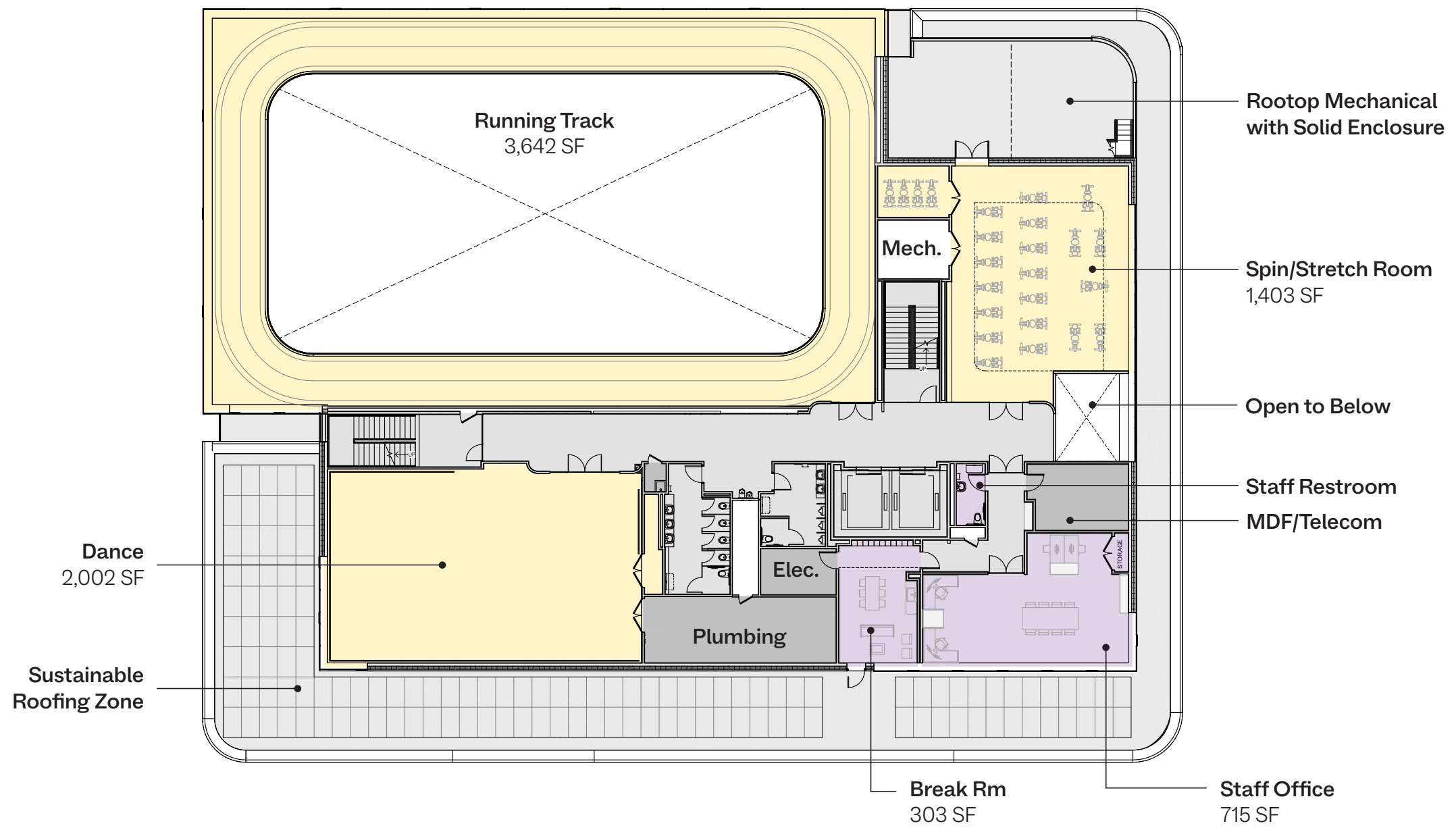


Level 1 Plan



**LEGEND**

- Exercise
- Exercise Support
- Administration
- Multipurpose
- Circulation/Restrooms
- Back Of House



**Soundview Park Recreation Center**  
 Bronx Community Board CB-9 - Nov 13 2024

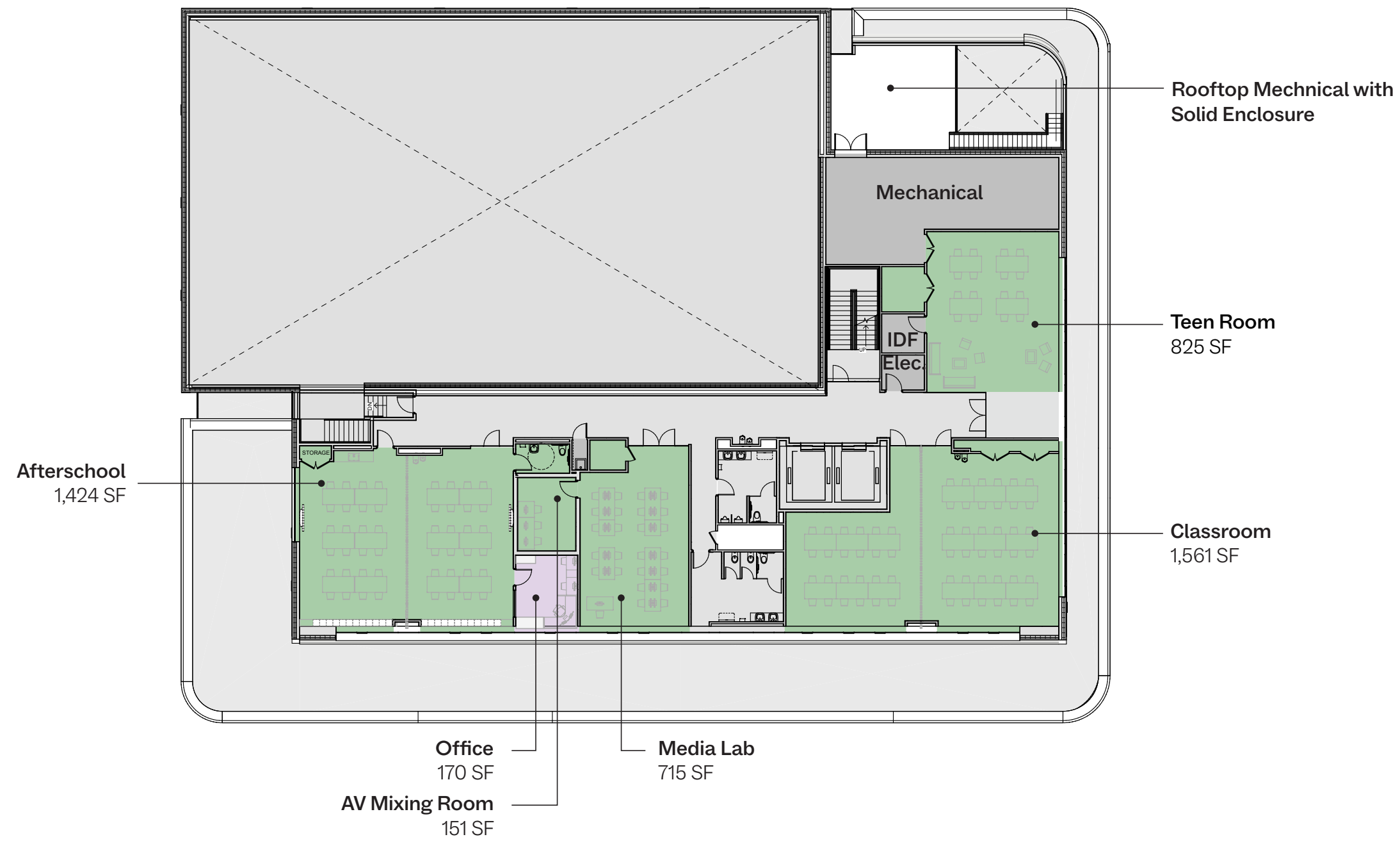


**Level 2 Plan**



**LEGEND**

- Exercise
- Exercise Support
- Administration
- Multipurpose
- Circulation/Restrooms
- Back Of House

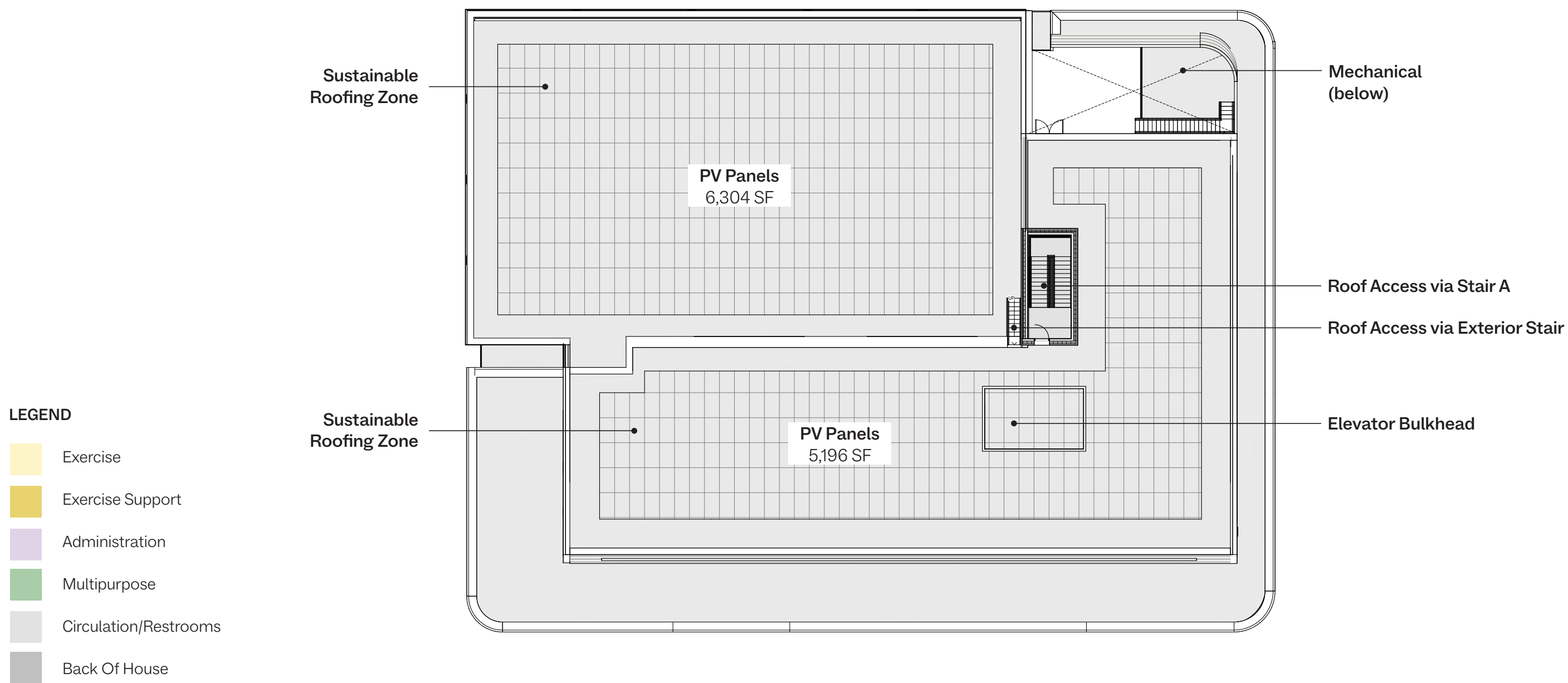


**Soundview Park Recreation Center**  
Bronx Community Board CB-9 - Nov 13 2024



**Level 3 Plan**

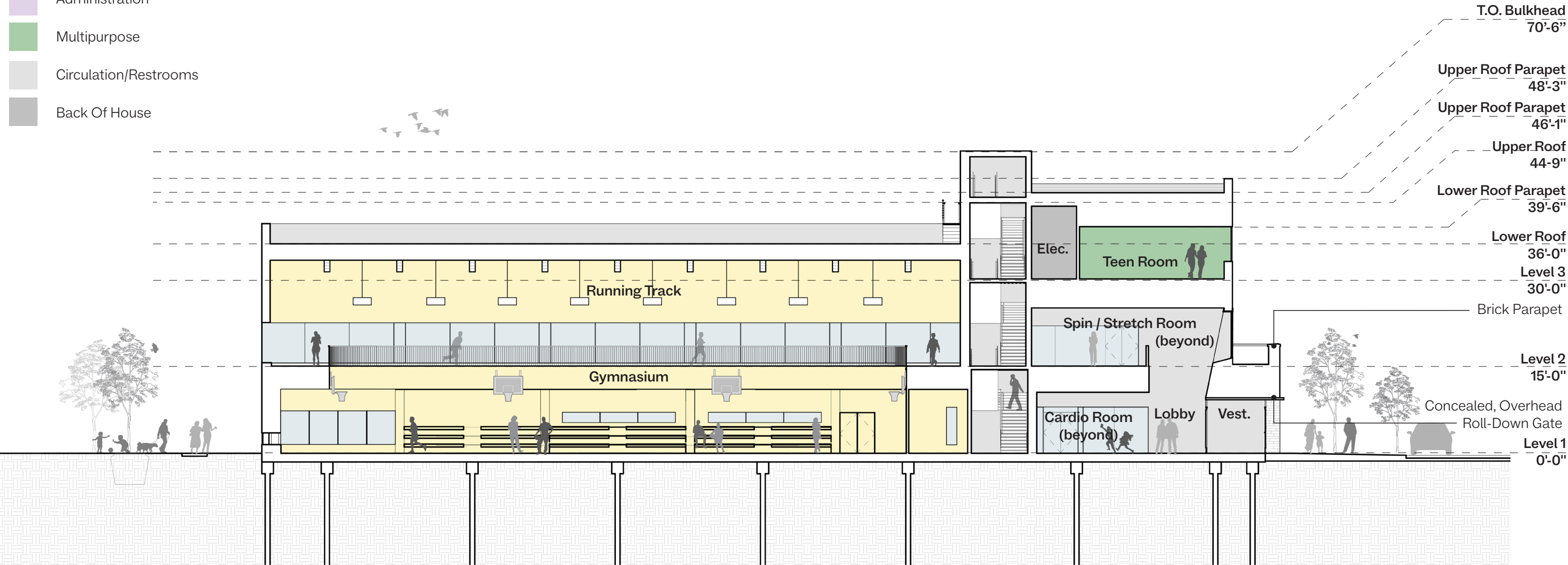






**LEGEND**

- Exercise
- Exercise Support
- Administration
- Multipurpose
- Circulation/Restrooms
- Back Of House

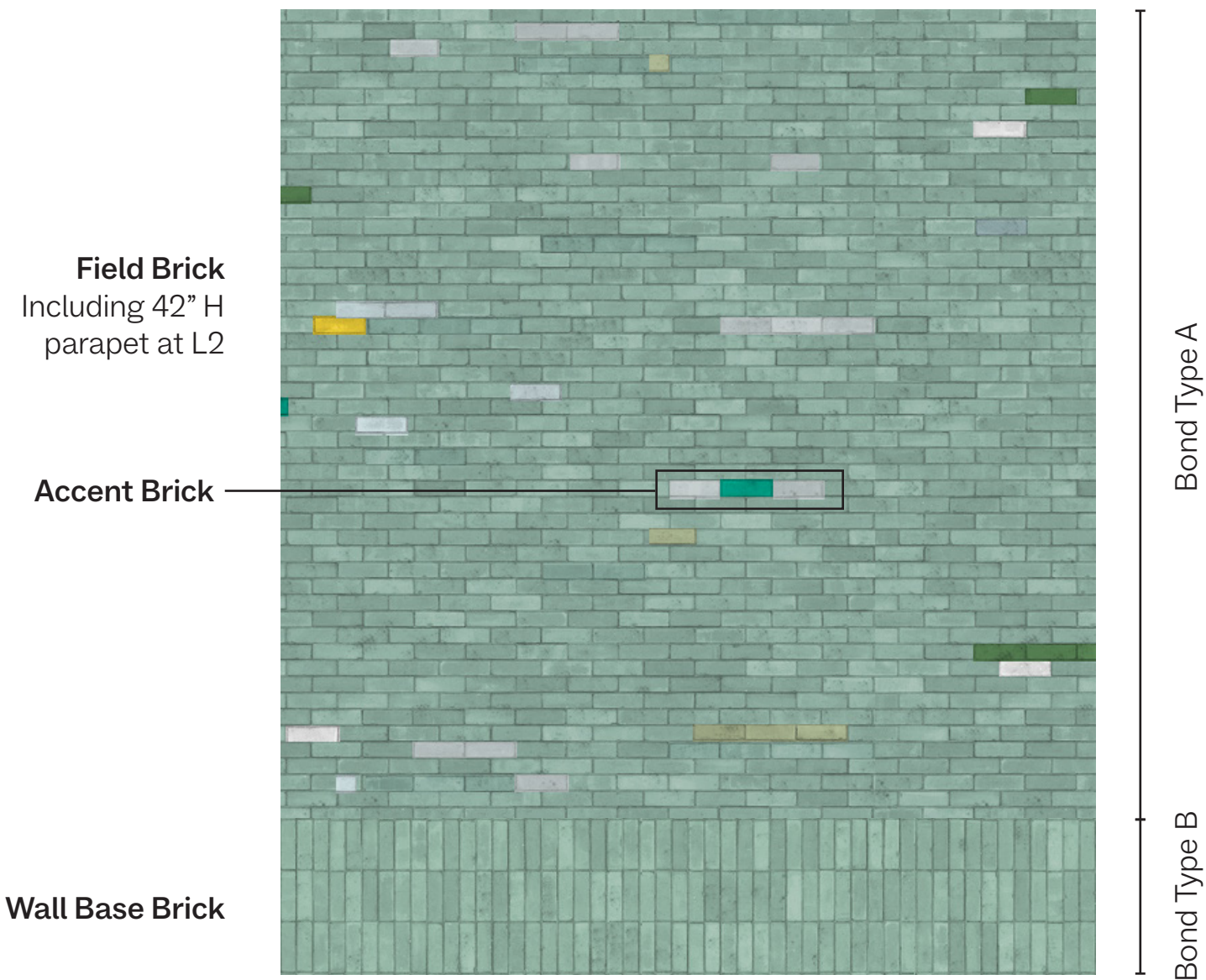




# Exterior Cladding: L1

## Brick Cavity Wall: Field & Base

- Durable, textured, tactile
- Colorful, welcoming, inviting with range of difference colors and tones
- Variety of coursing patterns and finishes: smooth and matte glazes
- Green field brick, connecting the building to the site and Soundview Park
- Human-scale: façade wants to be experienced up close, approachable
- Glen Gery, Belden, Taylor Brick or equal





# Exterior Cladding: L2 & L3

## Metal Panel Rainscreen

- Reflective to minimize appearance and vanish in the sky
- Dynamic and responsive to exterior environment
- Economical, low maintenance, and standard detailing
- Stainless steel (BOD) or painted aluminum
- Lustrous with surface texture to diffuse light and minimize undesired reflectivity / mitigate bird strike
- Embossed or corrugated, brake-formed
- Pohl, Zahner, LKMe or equal







## Soundview Park Recreation Center

Bronx Community Board CB-9 - Nov 13 2024



CONTACT INFORMATION

**ANNA KILLION**  
Outreach Coordinator  
Office of Community Outreach & Notification (OCON), DDC  
KILLIONAN@DDC.NYC.GOV

**NORBERTO ACEVEDO**  
Director  
Office of Community Outreach & Notification (OCON), DDC  
ACEVEDONO@DDC.NYC.GOV

