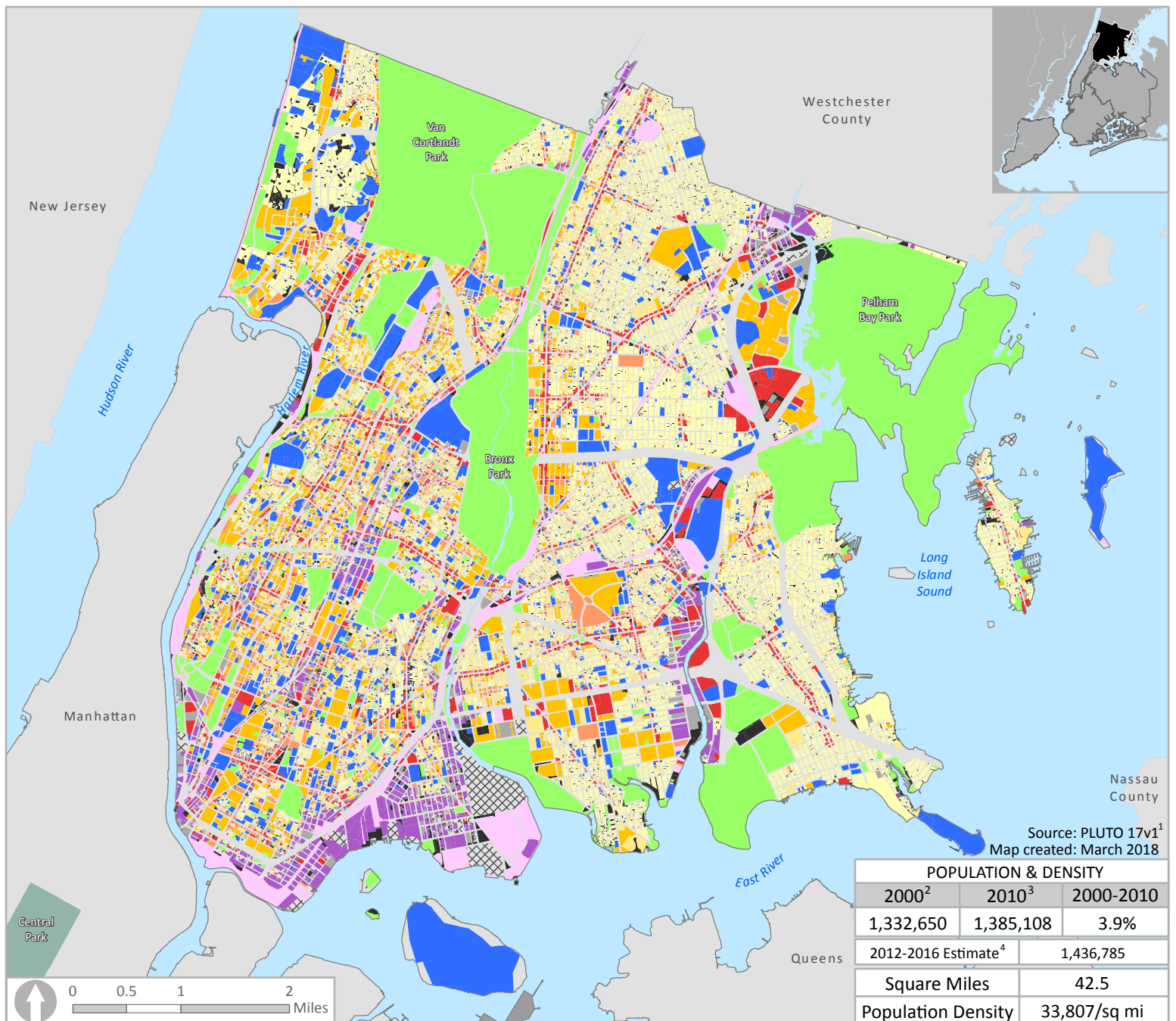


Land Use Profile: The Bronx



Source: PLUTO 17v1¹
Map created: March 2018

POPULATION & DENSITY		
2000 ²	2010 ³	2000-2010
1,332,650	1,385,108	3.9%
2012-2016 Estimate ⁴		1,436,785
Square Miles		42.5
Population Density		33,807/sq mi

Land Use Category	Lot Area %	Sq Ft (000)	# Lots	Resources
Open Space	31%	288,175	692	For more land use and zoning data, visit ZoLa ⁵ For community district profiles visit the Community Portal ⁶
1-2 Family Buildings	18%	161,737	51,656	
Public Facilities/Institutions	11%	104,133	1,914	
Multifamily Elevator Buildings	8%	77,338	2,146	
Multifamily Walk-up Buildings	7%	68,527	17,639	
Vacant Land	6%	59,729	2,425	
Commercial/Office Buildings	4%	39,178	4,102	
Industrial/Manufacturing	3%	32,458	1,357	
Mixed Commercial/Residential	3%	30,091	3,966	
Transportation/Utility	3%	25,474	579	
Parking Facilities	2%	21,293	2,425	
Other/No data	1%	12,792	415	

¹ See <https://www1.nyc.gov/site/planning/data-maps/open-data/dwn-pluto-mappluto.page>. ² 2000 US Census; ³ 2010 US Census; ⁴ American Community Survey 2012-2016 5-Year Estimates; ⁵ See <https://zola.planning.nyc.gov/>. ⁶ See <https://www1.nyc.gov/site/planning/community/community-portal.page>.