

***Statements of Community  
District Needs  
and  
Community Board  
Budget Requests***

Fiscal Year  
2021



Published by:



February 2020

**Bronx  
Community District  
11**

## INTRODUCTION

The annual Statements of Community District Needs (CD Needs Statements) and Community Board Budget Requests (Budget Requests) are Charter mandates that form an integral part of the City's budget process. Together, they are intended to support communities in their ongoing consultations with city agencies, elected officials and other key stakeholders and influence more informed decision making on a broad range of local planning and budget priorities. This report also provides a valuable public resource for neighborhood planning and research purposes, and may be used by a variety of audiences seeking information about New York City's diverse communities.

## HOW TO USE THIS REPORT

This report represents the Statement of Community District Needs and Community Board Budget Requests for Fiscal Year (FY) 2021. This report contains the formatted but otherwise unedited content provided by the community board, collected through an online form available to community boards from August to November, 2019.

Community boards may provide substantive supplemental information together with their Statements and Budget Requests. This supporting material can be accessed by clicking on the links provided in the document or by copying and pasting them into a web browser, such as Chrome, Safari or Firefox.

If you have questions about this report or suggestions for changes please contact:

[CDNEEDS\\_DL@planning.nyc.gov](mailto:CDNEEDS_DL@planning.nyc.gov)

This report is broadly structured as follows:

### 1. Overarching Community District Needs

Sections 1 – 4 provide an overview of the community district and the top three pressing issues affecting this district overall as identified by the community board. Any narrative provided by the board supporting their selection of their top three pressing issues is included.

### 2. Policy Area-Specific District Needs

Section 5 is organized by seven distinct policy areas aligned with the service and program areas of city agencies. For each policy area, community boards selected the most important issue for their districts and could provide a supporting narrative. The policy area section also includes any agency-specific needs and a list of relevant budget requests submitted by the community board. If the community board submitted additional information outside of a specific policy area, it may be found in Section 6.

### 3. Community Board Budget Requests

The final section includes the two types of budget requests submitted to the City for the FY21 budget cycle; one list for capital and another for expense budget requests. For each budget request, community boards were able to provide a priority number, explanation, location, and supporters. OMB remains the definitive source on budget requests submitted to city agencies.

## Disclaimer

This report represents the Statements of Community District Needs and Community Board Budget Requests of this Community District for Fiscal Year 2021. This report contains the formatted but otherwise unedited content provided by the community board.

*Budget Requests:* Listed for informational purposes only. OMB remains the definitive source on budget requests and budget request responses.

*Budget Priorities:* Priority numbers apply to expense and capital Budget requests from all policy areas. A complete list of expense and capital budget requests by this Board sorted by priority can be found in Section 7 of this document.

*Supporting Materials:* Some community boards provided substantive supplemental information. This supportive material can be accessed by clicking on the links provided in the document or by copying and pasting the links provided in the Appendix into a browser.

# TABLE OF CONTENTS

1. Community Board Information

---

2. Community District Profile and Land Use Map

---

3. Overview of Community District

---

4. Top Three Pressing Issues Overall

---

5. Summary of Community District Needs and Budget Requests

---

Health Care and Human Services

---

Youth, Education and Child Welfare

---

Public Safety and Emergency Services

---

Core Infrastructure, City Services and Resiliency

---

Housing, Economic Development and Land Use

---

Transportation

---

Parks, Cultural and Other Community Facilities

---

6. Other Budget Requests

---

7. Summary of Prioritized Budget Requests

---

# 1. COMMUNITY BOARD INFORMATION

Bronx Community Board 11

---

Address: 1741 Colden Avenue

Phone: (718) 892-6262

Email: [jwarneke@cb.nyc.gov](mailto:jwarneke@cb.nyc.gov)

Website: [www.nyc.gov/bronxcb11](http://www.nyc.gov/bronxcb11)

Chair: Al D'Angelo

District Manager: Jeremy Warneke

---

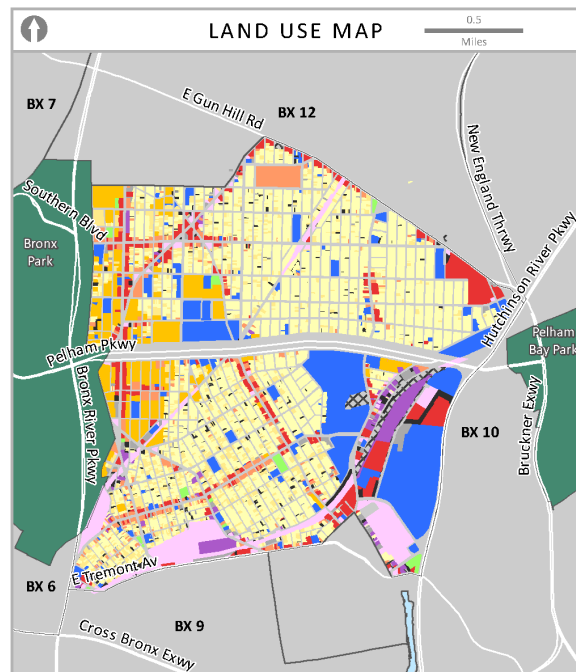
## 2. COMMUNITY DISTRICT PROFILE AND LAND USE MAP

# Bronx Community District 11



**Neighborhoods<sup>1</sup>:** Allerton, Bronxdale, Indian Village, Morris Park, Pelham Gardens, Pelham Parkway, Van Nest

POPULATION & DENSITY		
2000 <sup>2</sup>	2010 <sup>3</sup>	2000-2010
110,706	113,232	+2%
2013-2017 Estimate <sup>4</sup>		129,590
Square Miles		3.6
Population Density		31,453/sq mi



### COMMUNITY BOARD PERSPECTIVES

Top 3 pressing issues identified by Bronx Community Board 11 in 2019:

1. Police-community relations
2. Public health facilities
3. Quality of life issues

To learn more, please read Bronx CD 11's Statement of Community District Needs and Community Board Budget Requests for Fiscal Year 2021.

Website: [www.nyc.gov/bx11](http://www.nyc.gov/bx11)  
Email: [bx11@cb.nyc.gov](mailto:bx11@cb.nyc.gov)

Land Use Category	# Lots	% Lot Area
1 & 2 Family Bldgs	9,221	40%
Multifamily Walk-up	1,706	9%
Multifamily Elevator	159	8%
Mixed Use	400	4%
Commercial	327	7%
Industrial	67	2%
Transportation/Utility	123	8%
Public/Institutional	135	17%
Open Space	14	1%
Parking	173	2%
Vacant	371	2%
Other	15	2%

Map Source: PLUTO 19v2

### A Snapshot of Key Community Indicators

COMMUNITY ASSETS <sup>5</sup>	
Public Schools	32
Public Libraries	3
Hospitals and Clinics	35
Parks	7
Click to visit the NYC Facilities Explorer	

RENT BURDEN <sup>4, 6</sup>	
Bronx CD 11	Bronx
<b>48%</b>	51%
of households spend 35% or more of their income on rent	NYC
	45%

ACCESS TO PARKS <sup>7</sup>	
Bronx CD 11	Citywide Target
<b>86%</b>	85%
of residents live within walking distance of a park or open space	

MEAN COMMUTE TO WORK <sup>4, 8</sup>	
Bronx CD 11	Bronx
<b>44</b>	44
minutes	minutes
	NYC
	41
	minutes

LIMITED ENGLISH PROFICIENCY <sup>4</sup>	
Bronx CD 11	Bronx
<b>24%</b>	26%
of residents 5 years or older have limited English proficiency	NYC
	23%

CRIME RATE <sup>9</sup>	
Bronx CD 11	Bronx
<b>9.4</b>	14.3
major felonies were reported per 1,000 residents in 2017	NYC
	11.8

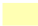

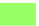





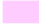



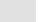
EDUCATIONAL ATTAINMENT <sup>4, 10</sup>	
Bronx CD 11	Bronx
<b>24%</b>	19%
of residents 25 years or older have earned a bachelor's degree or higher	NYC
	37%

UNEMPLOYMENT <sup>4, 10</sup>	
Bronx CD 11	Bronx
<b>6.7%</b>	6.9%
of the civilian labor force was unemployed on average from 2013 to 2017	NYC
	4.9%

NYCgov POVERTY MEASURE <sup>11</sup>	
Bronx CD 11	Bronx
<b>21%</b>	26%
of residents have incomes below the NYCgov poverty threshold. See the federal poverty rate here.	NYC
	20%

<sup>1</sup>Neighborhoods may be in multiple districts. Names and boundaries are not officially designated. <sup>2</sup>2000 US Census; <sup>3</sup>2010 US Census; <sup>4</sup>American Community Survey 2013-2017 5-Year Estimates, calculated for Public Use Microdata Areas (PUMAs). PUMAs are geographic approximations of community districts. <sup>5</sup>NYC Dept of City Planning Facilities Database (2019); <sup>6</sup>Differences of less than 3 percentage points are not statistically meaningful. <sup>7</sup>NYC Dept of Parks and Recreation (DPR) (2019). DPR considers walking distance to be 1/4 mile for parks less than 6 acres, and 1/2 mile for larger parks and pools. <sup>8</sup>Differences of less than 2 minutes are not statistically meaningful. <sup>9</sup>NYPD CompStat, Historic Complaint Data (2018); <sup>10</sup>Differences of less than 2 percentage points are not statistically meaningful. <sup>11</sup>2013-2017 NYCgov Poverty Measure by PUMA. This metric from the Mayor's Office for Economic Opportunity accounts for NYC's high cost of housing, as well as other costs of living and anti-poverty benefits.

# Bronx Community District 11 - Land Use

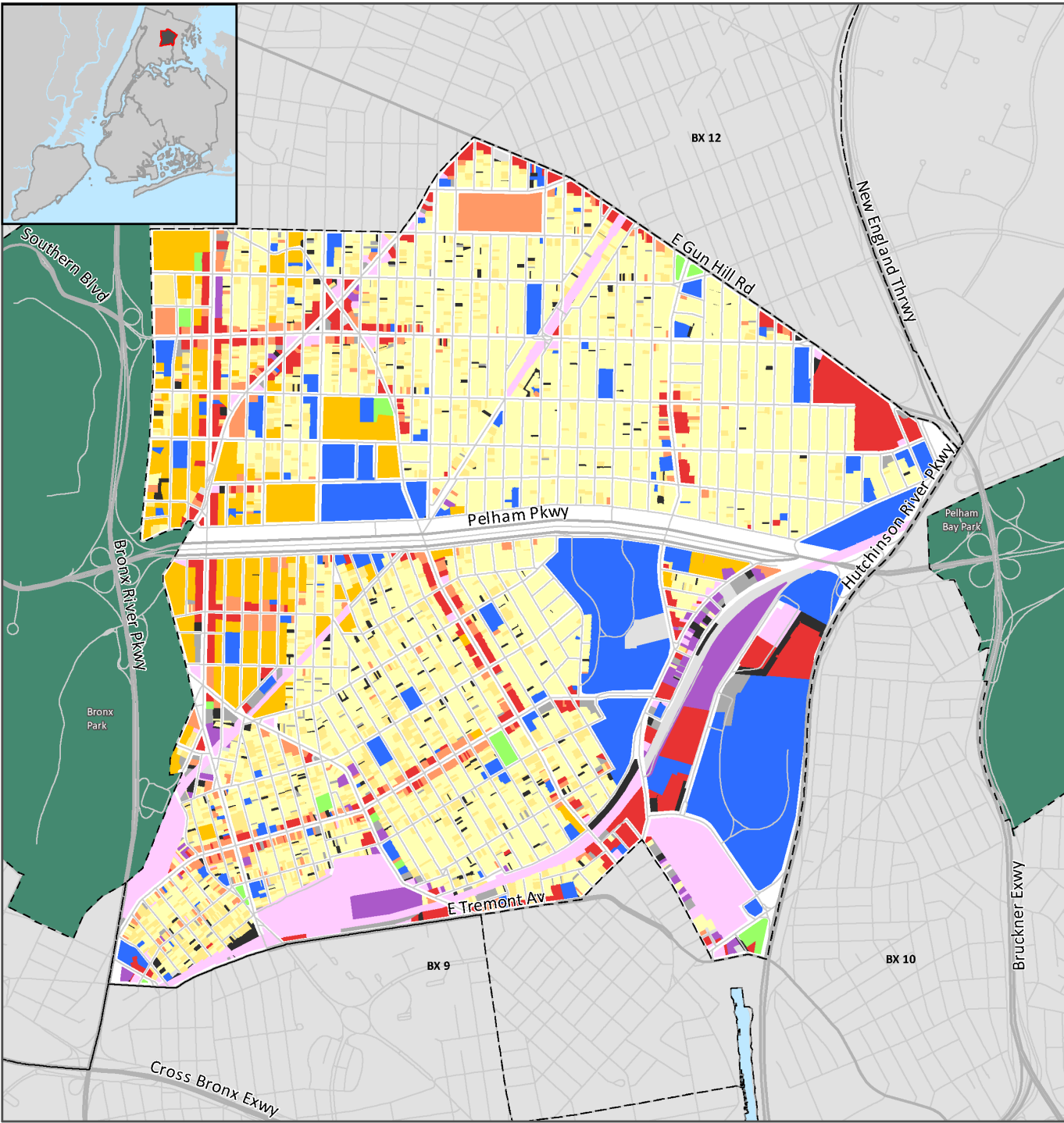
- |  |  |   |   |
|--|--|---|---|
|  One & Two Family Buildings             |  Commercial/Office Buildings      |  Open Space            |  Community Districts |
|  MultiFamily Walkup Buildings           |  Industrial/Manufacturing         |  Parking Facilities    |   |
|  MultiFamily Elevator Buildings         |  Transportation/Utility           |  Vacant Land           |   |
|  Mixed Commercial/Residential Buildings |  Public Facilities & Institutions |  All Others or No Data |   |

**NYC PLANNING**



0 1,100 2,200 Feet

Source: MapPLUTO™ 19v2  
 BYTES of the Big Apple  
 Created January 2020



### **3. OVERVIEW OF COMMUNITY DISTRICT**

Bronx Community Board 11 continues to grow in size and diversity. From the years 2000 to 2010, the Board's district grew by 2.3 percent. Increasingly, its population is a transient one with a large influx of immigrants from Asia, the Middle East and Latin America. We are seeing positive developments with the opening of the first Marriott Hotel in the Bronx in the Hutch Metro Center area and our first potential Metro-North train stations on East Tremont Avenue and Morris Park Avenue. Most of the neighborhoods of Community Board 11 remain desired locations in which to live, but communities such as Van Nest continue to teeter. The reasons for this, and other areas of our district, are crime and general negligence. Too often, we have landlords in these problematic areas, who don't live in the properties they own. Too many of these landlords are concerned with short-term profits. The recession and subprime mortgage crisis of 2007 to 2009 has exacerbated this problem.



## 4. TOP THREE PRESSING ISSUES OVERALL

### Bronx Community Board 11

---

The three most pressing issues facing this Community Board are:

#### **Police-community relations**

CB 11 has a good relationship with the 49th Precinct and wants to maintain that relationship. Many of our residents appreciate beat cops and Neighborhood Coordination Officers (NCO) program support.

#### **Public health facilities**

Overcrowding of emergency rooms is an issue in CB 11.

#### **Quality of life issues (noise, graffiti, petty crime, etc.)**

CB 11 cares about quality of life issues such as graffiti, i.e. removing and preventing it, abandoned vehicles (removing them), etc. Murals are a great deterrent to graffiti. Last year, CB 11 supported a mural through City Council funding, however, the CB was prevented from doing so this year due to a conflict of interest.

---

## 5. SUMMARY OF COMMUNITY DISTRICT NEEDS AND BUDGET REQUESTS

### HEALTH CARE AND HUMAN SERVICES

#### Bronx Community Board 11

---

##### Most Important Issue Related to Health Care and Human Services

###### **State of health facilities**

There is a need to address overcrowding in emergency rooms.

---

##### Community District Needs Related to Health Care and Human Services

###### **Needs for Health Care and Facilities**

Aside from the previous explanation, it needs to be said that the roadways of Jacobi Medical Center are and have been atrocious. The potholes tend to become craters, which make trips to and from the Medical Center campus very problematic.

###### **Needs for Older NYs**

No comments

###### **Needs for Homeless**

No comments

###### **Needs for Low Income NYs**

No comments

---

## Capital Requests Related to Health Care and Human Services

Priority	Agency	Request	Explanation	Location
3/20	HHC	<b>Renovate or upgrade an existing health care facility</b>	<i>Fund the resurfacing of all roadway space within the Jacobi Medical Center complex, which is plagued with major pothole problems.</i>	

## Expense Requests Related to Health Care and Human Services

The Community Board did not submit any Budget Requests in this category.

## YOUTH, EDUCATION AND CHILD WELFARE

### Bronx Community Board 11

---

#### Most Important Issue Related to Youth, Education and Child Welfare

##### **Other**

There is a lack of quality schools in the District, specifically high schools and middle schools.

---

#### Community District Needs Related to Youth, Education and Child Welfare

##### **Needs for Youth Education**

No comments

##### **Needs for Youth and Child Welfare**

No comments

---

## Capital Requests Related to Youth, Education and Child Welfare

Priority	Agency	Request	Explanation	Location
6/20	SCA	<b>Renovate or upgrade an elementary school</b>	<i>Reconstruction of bathrooms for P.S. 89. Since approximately 2010, the bathrooms at P.S. 89 are in poor condition and need to be renovated. Tiles are coming off of the walls. Urinals and toilets are leaking. Last year's response from the City was "OMB supports the agency's position as follows: Unable to prioritize funding for this project request at this time." Please help us understand why this is the case.</i>	980 Mace Avenue
7/20	SCA	<b>Renovate or upgrade an elementary school</b>	<i>For the past four or five years, the bathrooms at P.S. 105 have been in poor condition and need to be replaced, the fourth floor boys and girls bathrooms in particular. The wall tiles are falling off in some locations, and the urinals are easily broken. We appreciate the City's ability to accommodate part of this request in the past. More is needed however. Last year's response from the City was "Unable to prioritize funding for this project request at this time." Please help us understand why this is the case.</i>	725 Brady Avenue
20/20	SCA	<b>Provide technology upgrade</b>	<i>P.S. 121 has a request for 30 iPads and 6 smart board upgrades. Please see the attachment, which comes from the school principal.</i>	

## Expense Requests Related to Youth, Education and Child Welfare

The Community Board did not submit any Budget Requests in this category.

## **PUBLIC SAFETY AND EMERGENCY SERVICES**

### **Bronx Community Board 11**

---

#### Most Important Issue Related to Public Safety and Emergency Services

##### **Crime prevention programs**

As indicated in our Top Three Pressing Issues, crime prevention programs such as the addition of murals to address graffiti and beat cops assigned to specific streets, contribute to deterring crime and improving the public safety of the district.

---

#### Community District Needs Related to Public Safety and Emergency Services

##### **Needs for Public Safety**

We always struggle to have an NYPD patrol force size which the community needs and desires. We can never have enough lighting and security cameras in our district, and the new bike patrol in our district should be expanded as well.

##### **Needs for Emergency Services**

No comments

---

## Capital Requests Related to Public Safety and Emergency Services

The Community Board did not submit any Budget Requests in this category.

## Expense Requests Related to Public Safety and Emergency Services

Priority	Agency	Request	Explanation	Location
2/9	NYPD	<b>Assign additional uniformed officers</b>	<i>We always struggle have the patrol force size which our community needs and desires. The commander of the 49th Precinct has tremendously increased the police presence in our community by creating public events for children such as sports and video game tournaments as well as creating and expanding the bike patrol unit. We'd like ensure that his efforts continue and expand however.</i>	
6/9	NYPD	<b>Assign additional school safety officers</b>	<i>All schools that have portable classrooms need additional school safety officers.</i>	

## CORE INFRASTRUCTURE, CITY SERVICES AND RESILIENCY

### Bronx Community Board 11

---

#### Most Important Issue Related to Core Infrastructure, City Services and Resiliency.

##### **Snow clearing**

While Sanitation and Parks do a great job they have many other priorities throughout the City. We want to ensure our streets are covered during snow cleaning, especially tertiary streets and areas of high pedestrian traffic. There are sections of the District where there is lack of accountability among agencies regarding snow removal.

---

#### Community District Needs Related to Core Infrastructure, City Services and Resiliency.

##### **Needs for Water, Sewers, and Environmental Protection**

No comments

##### **Needs for Sanitation Services**

No comments

---



## Capital Requests Related to Core Infrastructure, City Services and Resiliency

The Community Board did not submit any Budget Requests in this category.

## Expense Requests Related to Core Infrastructure, City Services and Resiliency

Priority	Agency	Request	Explanation	Location
5/9	DSNY	Increase enforcement of illegal dumping laws	<i>Reference name is self-explanatory</i>	

## HOUSING, ECONOMIC DEVELOPMENT AND LAND USE

### Bronx Community Board 11

---

#### Most Important Issue Related to Housing, Economic Development and Land Use

##### **Building code and/or zoning enforcement**

There is a need for increased enforcement capability of the Department of Buildings.

---

#### Community District Needs Related to Housing, Economic Development and Land Use

##### **Needs for Land Use**

No comments

##### **Needs for Housing**

Our New York City Housing developments are in great need of repair.

##### **Needs for Economic Development**

No comments

---

## Capital Requests Related to Housing, Economic Development and Land Use

Priority	Agency	Request	Explanation	Location
9/20	NYCHA	<b>Renovate or upgrade public housing developments</b>	<i>Increase lighting on the grounds of Eastchester Gardens. This will help deter criminal activity at this NYCHA development.</i>	1130 Burke Avenue
10/20	NYCHA	<b>Renovate or upgrade public housing developments</b>	<i>Replace all 16 building entry lobby doors at Eastchester Gardens. The entry lobby doors at this NYCHA development are in badly need of repair and are not compliant with the layered access system.</i>	1130 Burke Avenue
11/20	NYCHA	<b>Renovate or upgrade public housing developments</b>	<i>Evaluate &amp; repair the steps in all Eastchester Gardens buildings' basements &amp; entrance stairways. Some of these steps are not secure and pose a liability.</i>	1130 Burke Avenue
12/20	NYCHA	<b>Renovate or upgrade public housing developments</b>	<i>Evaluate &amp; repair the roofs of the Eastchester Gardens complex. Water leaks into apartments as a result of the damaged roofs.</i>	1130 Burke Avenue

## Expense Requests Related to Housing, Economic Development and Land Use

The Community Board did not submit any Budget Requests in this category.

## TRANSPORTATION

### Bronx Community Board 11

---

#### Most Important Issue Related to Transportation and Mobility.

##### **Roadway maintenance**

We have some of the largest roadway space in the Bronx. With that come roadway maintenance issues such as potholes. The Pelham Parkway area is currently being reconstructed, but this project took 30 years to go into effect. There is a need for increased traffic agents and street light sensors to change the lights at certain times of day.

---

#### Community District Needs Related to Transportation and Mobility.

##### **Needs for Traffic and Transportation Infrastructure**

No comments

##### **Needs for Transit Services**

No comments

---

## Capital Requests Related to Transportation and Mobility

Priority	Agency	Request	Explanation	Location
5/20	DOT	<b>Other capital traffic improvements requests</b>	<i>Community Board 11 is requesting the construction of Bassett Avenue from McDonald Street to Pelham Parkway. This portion of Bassett Avenue is a mapped yet unpaved street. The reason we are requesting this is because there is a need to alleviate traffic congestion in the vicinity; and there will be an even greater need in the near future. Opening Bassett Avenue will go a long way toward allowing easier access to Pelham Parkway and alleviating traffic congestion on Eastchester Road and Stillwell Avenue.</i>	
19/20	DOT	<b>Install streetscape improvements</b>	<i>Areas such as Allerton Avenue, Van Nest, and Morris Park could benefit from improved street scapes to help attract more people to frequent our local merchants and bring more outside business to the area. Improved lighting is essential in keeping the area safe and making the residents feel comfortable walking in the community during the evening time.</i>	
CS	DOT	<b>Reconstruct streets</b>	<i>Reconstruct the north side of Pelham Parkway and repave the eastern-bound roadway from Boston Road to Stillwell Avenue. This section of Pelham Parkway is in dire need of reconstruction.</i>	Pelham Parkway Stillwell Ave Boston Rd

## Expense Requests Related to Transportation and Mobility

The Community Board did not submit any Budget Requests in this category.

## **PARKS, CULTURAL AND OTHER COMMUNITY FACILITIES**

### **Bronx Community Board 11**

---

#### Most Important Issue Related to Parks, Cultural and Other Community Facilities

##### **Library facilities and access**

There is a need to support increased funding to ensure maintenance and accessibility of library facilities.

---

#### Community District Needs Related to Parks, Cultural and Other Community Facilities

##### **Needs for Parks**

No comments

##### **Needs for Cultural Services**

No comments

##### **Needs for Library Services**

Parents unfortunately use the libraries in our district as daycare centers, thereby putting an unnecessary burden upon the New York Public Library by distracting it from its primary mission: servicing the entire community.

##### **Needs for Community Boards**

Community Boards are the lowest level of city government with some of the highest needs.

---

## Capital Requests Related to Parks, Cultural and Other Community Facilities

Priority	Agency	Request	Explanation	Location
1/20	DPR	<b>Reconstruct or upgrade a building in a park</b>	<i>Rehabilitate Peace Memorial Plaza, which is in need of a total renovation, including the installation of a Veterans Memorial Wall for the Bronx's fallen and missing in action United States military personnel. We understand last year's response, but we need to know how much the renovation would cost before we attempt to solicit funds from elected officials.</i>	
2/20	DPR	<b>Reconstruct or upgrade a park or amenity (i.e. playground, outdoor athletic field)</b>	<i>Rehabilitate Pelham Parkway from the Bronx River Parkway to Stillwell Avenue: bridle path, drainage, re-sod and replant foliage on greenways, rehabilitate cross paths and pedestrian walks, repair and replace benches, install sidewalks and curbs. Construct a display gateway at Bronx River Parkway and a monument at Williamsbridge Road. Construction has started at the western end of Pelham Parkway, but funds have not been committed for the rest of the parkway.</i>	Pelham Parkway Stillwell Ave Boston Rd
4/20	NYPL	<b>Create a new, or renovate or upgrade an existing public library</b>	<i>Funding to upgrade the HVAC system for the Pelham Parkway-Van Nest Library. We support and recognize the need and mission of the New York Public Library and therefore support their request for increased public funding for these this branch.</i>	2147 Barnes Avenue
8/20	DPR	<b>Reconstruct or upgrade a park or amenity (i.e. playground, outdoor athletic field)</b>	<i>Complete renovation of Eastchester Playground is needed, particularly the underground infrastructure.</i>	Burke and Adee Avenues
13/20	DPR	<b>Reconstruct or upgrade a building in a park</b>	<i>The restrooms at Matthews-Muliner Playground are unsanitary and, in addition to the drinking fountains, need to be renovated.</i>	Matthews and Muliner Aves
14/20	DPR	<b>Reconstruct or upgrade a building in a park</b>	<i>The Mazzei Playground is used daily by the children of P.S. 89. An upgrade of the play areas and public restrooms will improve the safety of the children and school staff.</i>	
15/20	DPR	<b>Reconstruct or upgrade a building in a park</b>	<i>This Ben Abrams Playground has been neglected. It, including the restrooms, needs an upgrade.</i>	

16/20	DPR	<b>Reconstruct or upgrade a park or amenity (i.e. playground, outdoor athletic field)</b>	<i>The Parkside Playground public restrooms, drinking fountains and play areas are in need of complete renovation. The playground is used daily by Brightside Academy day care and children from Parkside Houses. These improvements will ensure the safety and well being of the children in the community.</i>
17/20	DPR	<b>Reconstruct or upgrade a building in a park</b>	<i>The cobble stone along Bronx Park between Brady and Lydig Avenues need to be replaced. The community also requests additional benches inside Bronx Park at this location.</i>

### Expense Requests Related to Parks, Cultural and Other Community Facilities

Priority	Agency	Request	Explanation	Location
1/9	OMB	<b>Provide more community board staff</b>	<i>Increase Community Board budgets to \$350,000 annually. This will allow community boards to perform City Charter mandates where they are lacking.</i>	
3/9	DPR	<b>Enhance park safety through more security staff (police or parks enforcement)</b>	<i>Increase the number of PEP officers in the Bronx. Though the numbers have increased in the past year or so, the Bronx still an inadequate number of PEP (Park Enforcement Patrol) officers to handle all of the problems in our parks.</i>	
4/9	DPR	<b>Forestry services, including street tree maintenance</b>	<i>Improve Forestry Services. There is always backlog of pruning requests in our district.</i>	
7/9	DPR	<b>Other park maintenance and safety requests</b>	<i>Improve &amp; upgrade existing greenstreet bound by Unionport Rd., Van Nest Ave &amp; the inactive Victor Street side of Van Nest Park. This will compliment and beautify Van Nest Park and provide for a more attractive and enticing entrance way to the park.</i>	Unionport Rd Van Nest Ave Victor Street
8/9	DPR	<b>Enhance park safety through design interventions, e.g. better lighting (Expense)</b>	<i>The fencing in Bronx Park along the northbound lane of the Bronx River Parkway south of Fordham Road/Pelham Parkway needs to be replaced.</i>	



## 6. OTHER BUDGET REQUESTS

### Other Capital Requests

Priority	Agency	Request	Explanation	Location
18/20	Other	<b>Other capital budget request</b>	<i>CB11 lacks a non-profit community center similar to that of a YMCA or Kips Bay Boys &amp; Girls Club. There is no hub of resources and recreation for CB11 children to choose from when having time after school and on weekends.</i>	

### Other Expense Requests

Priority	Agency	Request	Explanation	Location
9/9	Other	<b>Other expense budget request</b>	<i>The trees surrounding the Cornerstone Playground at 785 Pelham Parkway North need to be pruned. There are wooden benches in the playground area that are unsafe and need to be removed and/or replaced. And the fencing surrounding the playground needs to be made much higher.</i>	

## 7. SUMMARY OF PRIORITIZED BUDGET REQUESTS

### Capital Budget Requests

Priority	Agency	Request	Explanation	Location
1/20	DPR	<b>Reconstruct or upgrade a building in a park</b>	<i>Rehabilitate Peace Memorial Plaza, which is in need of a total renovation, including the installation of a Veterans Memorial Wall for the Bronx's fallen and missing in action United States military personnel. We understand last year's response, but we need to know how much the renovation would cost before we attempt to solicit funds from elected officials.</i>	
2/20	DPR	<b>Reconstruct or upgrade a park or amenity (i.e. playground, outdoor athletic field)</b>	<i>Rehabilitate Pelham Parkway from the Bronx River Parkway to Stillwell Avenue: bridle path, drainage, re-sod and replant foliage on greenways, rehabilitate cross paths and pedestrian walks, repair and replace benches, install sidewalks and curbs. Construct a display gateway at Bronx River Parkway and a monument at Williamsbridge Road. Construction has started at the western end of Pelham Parkway, but funds have not been committed for the rest of the parkway.</i>	Pelham Parkway Stillwell Ave Boston Rd
3/20	HHC	<b>Renovate or upgrade an existing health care facility</b>	<i>Fund the resurfacing of all roadway space within the Jacobi Medical Center complex, which is plagued with major pothole problems.</i>	
4/20	NYPL	<b>Create a new, or renovate or upgrade an existing public library</b>	<i>Funding to upgrade the HVAC system for the Pelham Parkway-Van Nest Library. We support and recognize the need and mission of the New York Public Library and therefore support their request for increased public funding for these this branch.</i>	2147 Barnes Avenue
5/20	DOT	<b>Other capital traffic improvements requests</b>	<i>Community Board 11 is requesting the construction of Bassett Avenue from McDonald Street to Pelham Parkway. This portion of Bassett Avenue is a mapped yet unpaved street. The reason we are requesting this is because there is a need to alleviate traffic congestion in the vicinity; and there will be an even greater need in the near future. Opening Bassett Avenue will go a long way toward allowing easier access to Pelham Parkway and alleviating traffic congestion on Eastchester Road and Stillwell Avenue.</i>	

6/20	SCA	<b>Renovate or upgrade an elementary school</b>	<i>Reconstruction of bathrooms for P.S. 89. Since approximately 2010, the bathrooms at P.S. 89 are in poor condition and need to be renovated. Tiles are coming off of the walls. Urinals and toilets are leaking. Last year's response from the City was "OMB supports the agency's position as follows: Unable to prioritize funding for this project request at this time." Please help us understand why this is the case.</i>	980 Mace Avenue
7/20	SCA	<b>Renovate or upgrade an elementary school</b>	<i>For the past four or five years, the bathrooms at P.S. 105 have been in poor condition and need to be replaced, the fourth floor boys and girls bathrooms in particular. The wall tiles are falling off in some locations, and the urinals are easily broken. We appreciate the City's ability to accommodate part of this request in the past. More is needed however. Last year's response from the City was "Unable to prioritize funding for this project request at this time." Please help us understand why this is the case.</i>	725 Brady Avenue
8/20	DPR	<b>Reconstruct or upgrade a park or amenity (i.e. playground, outdoor athletic field)</b>	<i>Complete renovation of Eastchester Playground is needed, particularly the underground infrastructure.</i>	Burke and Adee Avenues
9/20	NYCHA	<b>Renovate or upgrade public housing developments</b>	<i>Increase lighting on the grounds of Eastchester Gardens. This will help deter criminal activity at this NYCHA development.</i>	1130 Burke Avenue
10/20	NYCHA	<b>Renovate or upgrade public housing developments</b>	<i>Replace all 16 building entry lobby doors at Eastchester Gardens. The entry lobby doors at this NYCHA development are in badly need of repair and are not compliant with the layered access system.</i>	1130 Burke Avenue
11/20	NYCHA	<b>Renovate or upgrade public housing developments</b>	<i>Evaluate &amp; repair the steps in all Eastchester Gardens buildings' basements &amp; entrance stairways. Some of these steps are not secure and pose a liability.</i>	1130 Burke Avenue
12/20	NYCHA	<b>Renovate or upgrade public housing developments</b>	<i>Evaluate &amp; repair the roofs of the Eastchester Gardens complex. Water leaks into apartments as a result of the damaged roofs.</i>	1130 Burke Avenue
13/20	DPR	<b>Reconstruct or upgrade a building in a park</b>	<i>The restrooms at Matthews-Muliner Playground are unsanitary and, in addition to the drinking fountains, need to be renovated.</i>	Matthews and Muliner Aves

14/20	DPR	<b>Reconstruct or upgrade a building in a park</b>	<i>The Mazzei Playground is used daily by the children of P.S. 89. An upgrade of the play areas and public restrooms will improve the safety of the children and school staff.</i>	
15/20	DPR	<b>Reconstruct or upgrade a building in a park</b>	<i>This Ben Abrams Playground has been neglected. It, including the restrooms, needs an upgrade.</i>	
16/20	DPR	<b>Reconstruct or upgrade a park or amenity (i.e. playground, outdoor athletic field)</b>	<i>The Parkside Playground public restrooms, drinking fountains and play areas are in need of complete renovation. The playground is used daily by Brightside Academy day care and children from Parkside Houses. These improvements will ensure the safety and well being of the children in the community.</i>	
17/20	DPR	<b>Reconstruct or upgrade a building in a park</b>	<i>The cobble stone along Bronx Park between Brady and Lydig Avenues need to be replaced. The community also requests additional benches inside Bronx Park at this location.</i>	
18/20	Other	<b>Other capital budget request</b>	<i>CB11 lacks a non-profit community center similar to that of a YMCA or Kips Bay Boys &amp; Girls Club. There is no hub of resources and recreation for CB11 children to choose from when having time after school and on weekends.</i>	
19/20	DOT	<b>Install streetscape improvements</b>	<i>Areas such as Allerton Avenue, Van Nest, and Morris Park could benefit from improved street scapes to help attract more people to frequent our local merchants and bring more outside business to the area. Improved lighting is essential in keeping the area safe and making the residents feel comfortable walking in the community during the evening time.</i>	
20/20	SCA	<b>Provide technology upgrade</b>	<i>P.S. 121 has a request for 30 iPads and 6 smart board upgrades. Please see the attachment, which comes from the school principal.</i>	
CS	DOT	<b>Reconstruct streets</b>	<i>Reconstruct the north side of Pelham Parkway and repave the eastern-bound roadway from Boston Road to Stillwell Avenue. This section of Pelham Parkway is in dire need of reconstruction.</i>	Pelham Parkway Stillwell Ave Boston Rd

## Expense Budget Requests

Priority	Agency	Request	Explanation	Location
1/9	OMB	<b>Provide more community board staff</b>	<i>Increase Community Board budgets to \$350,000 annually. This will allow community boards to perform City Charter mandates where they are lacking.</i>	
2/9	NYPD	<b>Assign additional uniformed officers</b>	<i>We always struggle have the patrol force size which our community needs and desires. The commander of the 49th Precinct has tremendously increased the police presence in our community by creating public events for children such as sports and video game tournaments as well as creating and expanding the bike patrol unit. We'd like ensure that his efforts continue and expand however.</i>	
3/9	DPR	<b>Enhance park safety through more security staff (police or parks enforcement)</b>	<i>Increase the number of PEP officers in the Bronx. Though the numbers have increased in the past year or so, the Bronx still an inadequate number of PEP (Park Enforcement Patrol) officers to handle all of the problems in our parks.</i>	
4/9	DPR	<b>Forestry services, including street tree maintenance</b>	<i>Improve Forestry Services. There is always backlog of pruning requests in our district.</i>	
5/9	DSNY	<b>Increase enforcement of illegal dumping laws</b>	<i>Reference name is self-explanatory</i>	
6/9	NYPD	<b>Assign additional school safety officers</b>	<i>All schools that have portable classrooms need additional school safety officers.</i>	
7/9	DPR	<b>Other park maintenance and safety requests</b>	<i>Improve &amp; upgrade existing greenstreet bound by Unionport Rd., Van Nest Ave &amp; the inactive Victor Street side of Van Nest Park. This will compliment and beautify Van Nest Park and provide for a more attractive and enticing entrance way to the park.</i>	Unionport Rd Van Nest Ave Victor Street
8/9	DPR	<b>Enhance park safety through design interventions, e.g. better lighting (Expense)</b>	<i>The fencing in Bronx Park along the northbound lane of the Bronx River Parkway south of Fordham Road/Pelham Parkway needs to be replaced.</i>	

---

9/9

Other

**Other expense  
budget request**

*The trees surrounding the Cornerstone Playground at 785 Pelham Parkway North need to be pruned. There are wooden benches in the playground area that are unsafe and need to be removed and/or replaced. And the fencing surrounding the playground needs to be made much higher.*