



Parks

# Hutchinson River Parkway District 10 Headquarters Construction

Located at Hutchinson River Parkway East, Continental Avenue  
and East 197th Street in the Borough of The Bronx

Community Board 10 Parks Committee Review

May 8, 2025

Kevin Horgan, NYC Parks

**Total Budget:** \$2.5m - Mayor, Eric Adams

**Project Size:** 0.39 ac

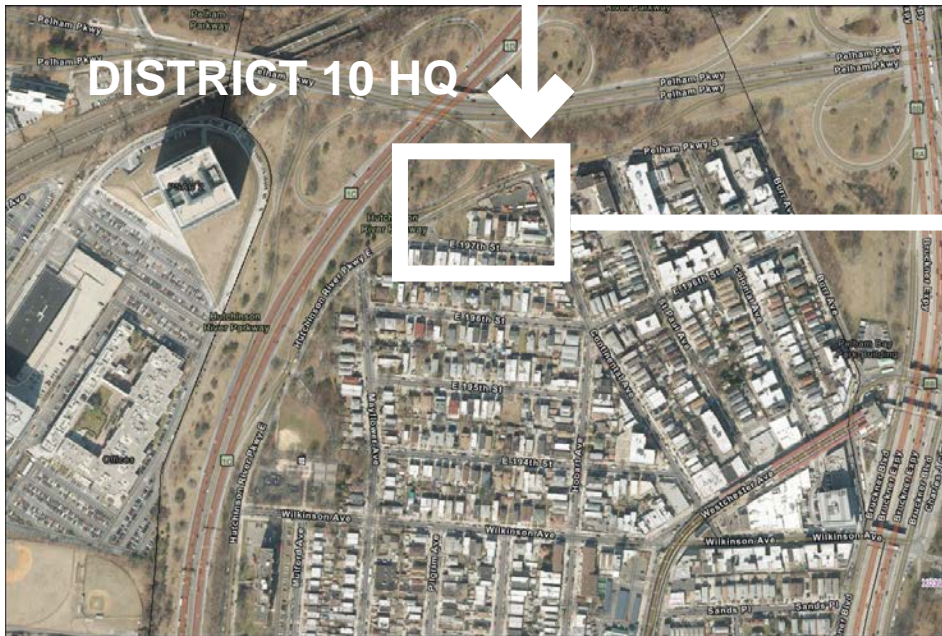
# Goals

- Create an office space with new trailers and related utilities including metered electrical service, water and drainage system, yard lighting and landscaping.
- Secure the site with Perimeter Fence Gates.
- Construct asphalt pavement for storage and parking.





City



Neighborhood



Site

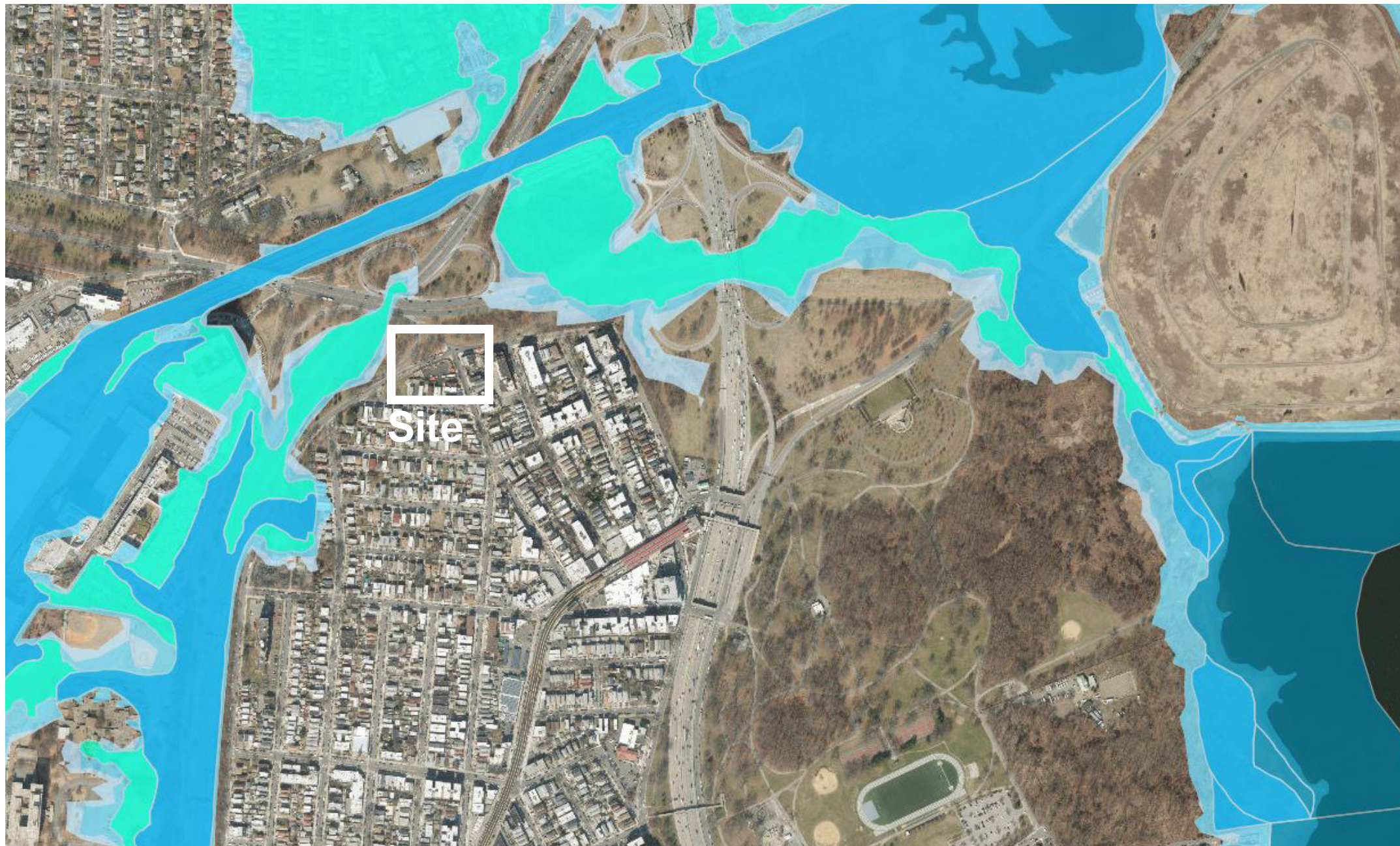
200 FT



NYC Parks

# Hutchinson River Parkway District 10 Headquarters | Project Location





Source: <http://www.nyc.gov/floodhazardmapper>

## Flood Hazard Zones

### 2015 Preliminary Flood Insurance Rate Map

#### V Zone (100-year floodplain subject to wave action)

Areas along coasts subject to inundation by the 1% annual chance flood event with additional hazards associated with storm-induced waves.

#### A Zone (100-year floodplain)

Areas subject to inundation by the 1% annual chance flood event.

#### Shaded X Zone (500-year floodplain)

Areas within the 0.2% annual chance floodplain, areas of 1% annual chance flooding where average depths are less than 1 foot, areas of 1% annual chance flooding where the contributing drainage area is less than 1 square mile, and areas protected from the 1% annual chance flood by a levee.

#### Limit of Moderate Wave Action (LiMWA)

The inland limit of the area expected to receive 1.5ft or greater breaking waves during the 1% annual chance flood event. Data from 2015 PFIRMs.

### Future Floodplain 2050s

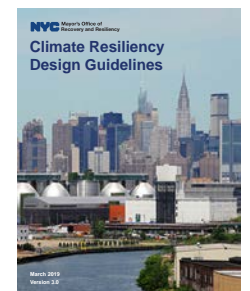
#### Future 1% Annual Chance Floodplain (100-year)

#### Future 0.2% Annual Chance Floodplain (500-year)

### Resources (Links):



NYC Parks: Design and Planning for Flood Resiliency

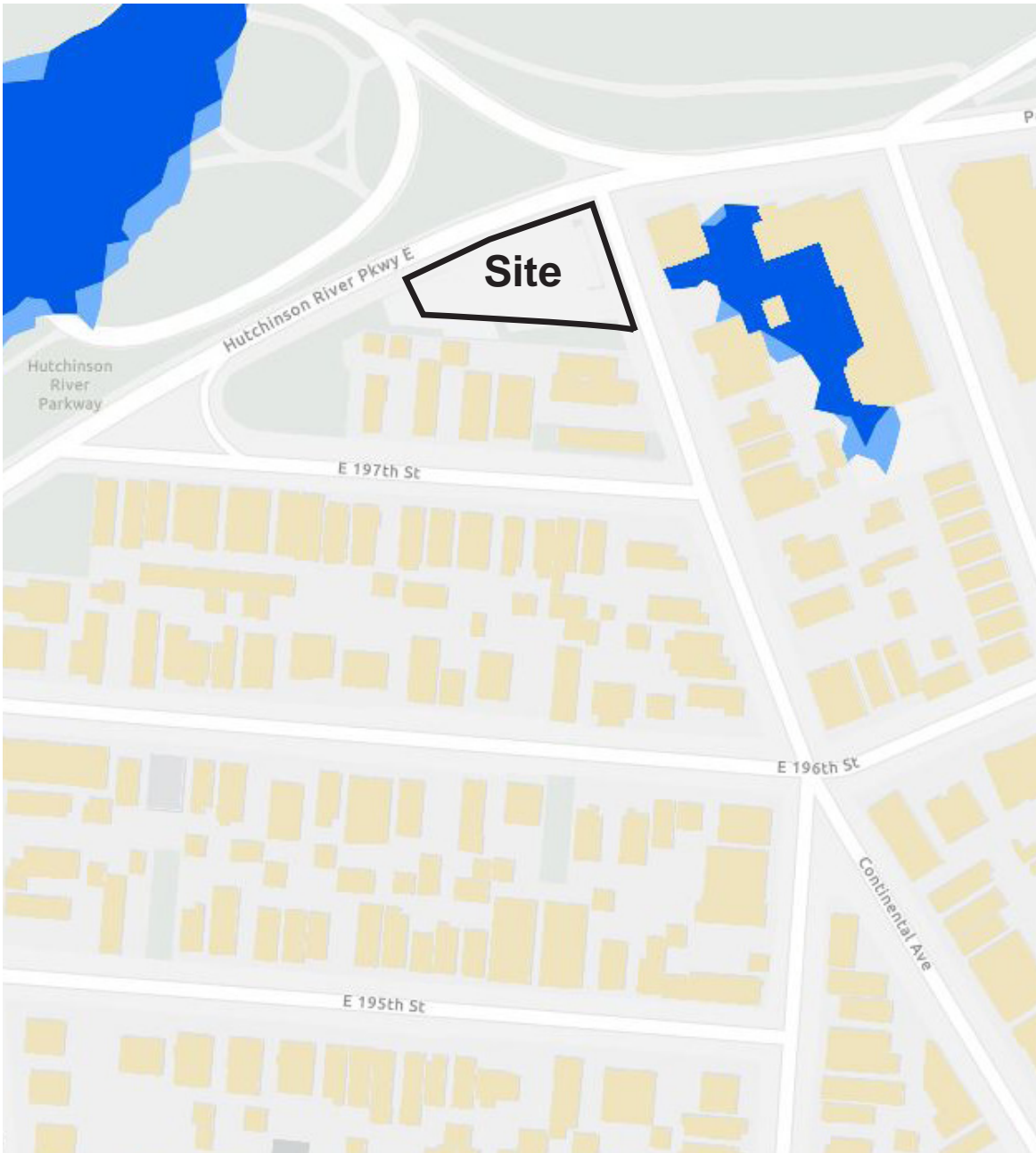


NYC MOCR: Climate Resiliency Design Guidelines (v4.0)





Moderate Flooding (10-year storm)



Extreme Flooding (100-year storm)

# NYC Stormwater Flood Maps

- Area not included in analysis
- Future High Tides 2050 (Moderate) & 2080 (Extreme)
- National Wetlands Inventory
- Deep and Contiguous Flooding (1ft and greater)
- Nuisance Flooding (greater or equal to 4 in and less than 1 ft)

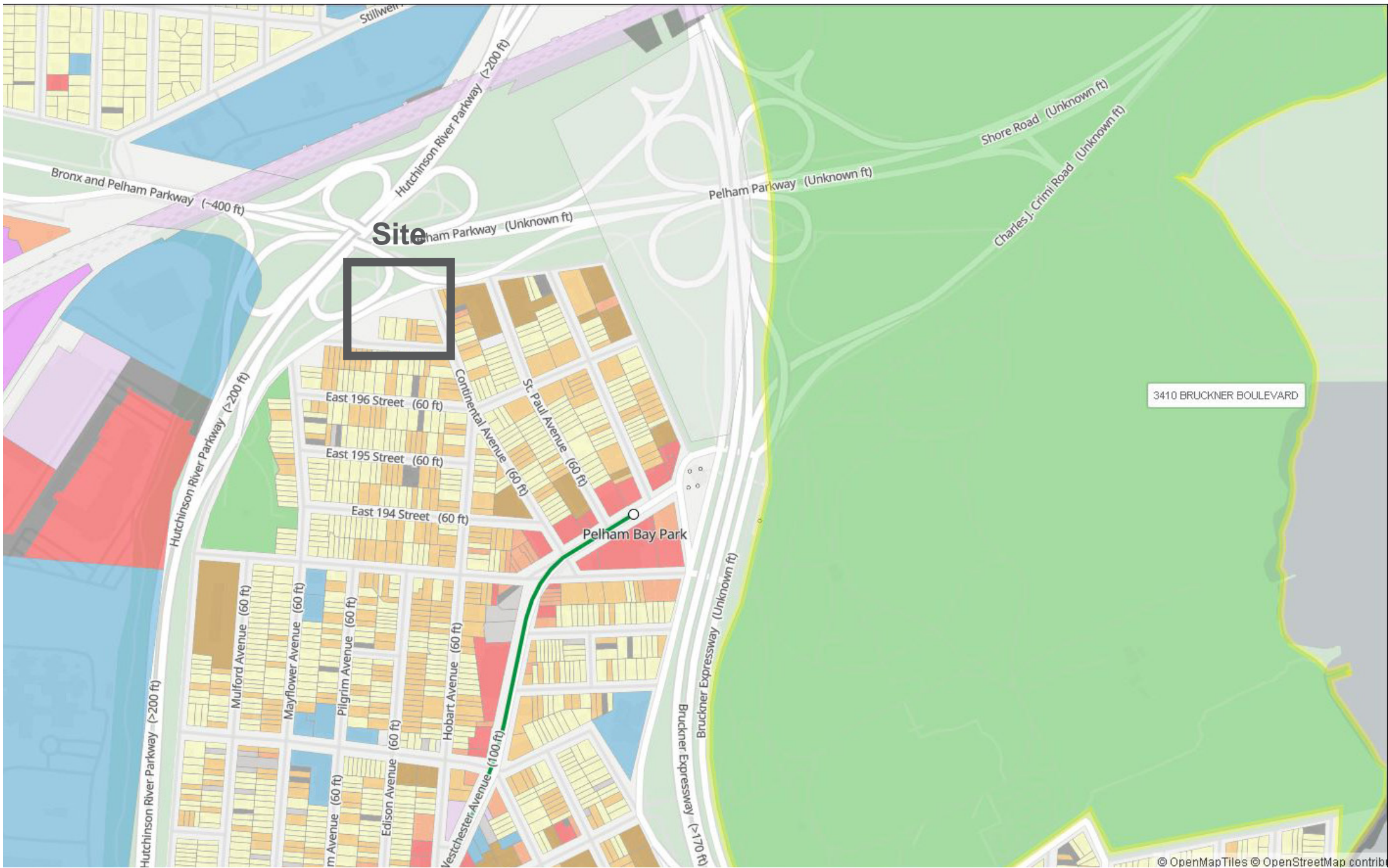


NYC Parks

Hutchinson River Parkway District 10 Headquarters | Flood Risk (Stormwater)







# Land Use Categories

- 1 And 2 Family Residential
- Multi-Family Residential (Walkup)
- Multi-Family Residential (Elevator)
- Mixed Use
- Commercial & Office
- Industrial & Manufacturing
- Transportation / Utilities
- Public Facilities & Institutional
- Open Space And Outdoor Recreation
- Parking
- Vacant Land
- Other



NYC Parks

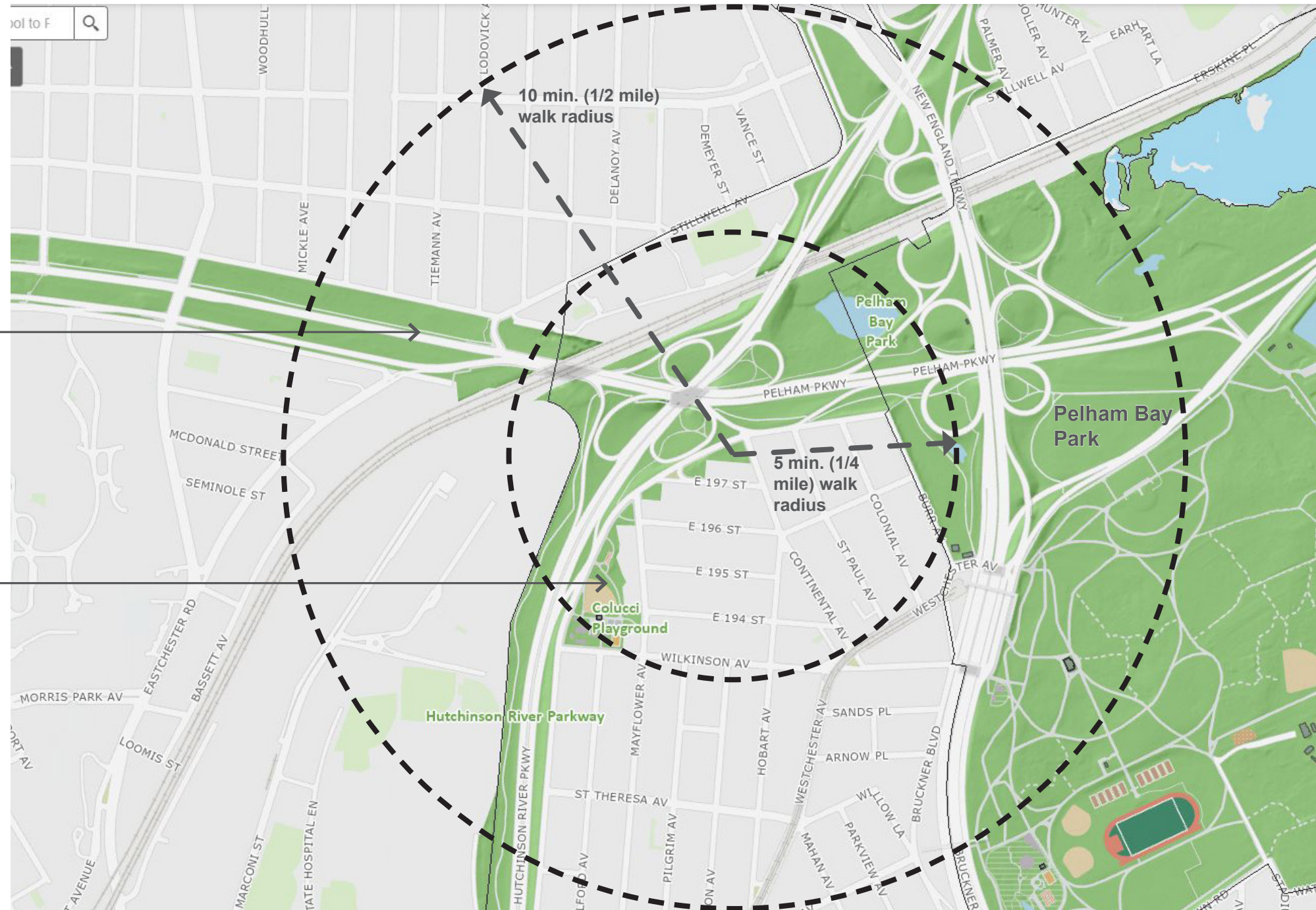
Hutchinson River Parkway District 10 Headquarters | Surrounding Land Use





**PELHAM PARKWAY  
GREENWAY**

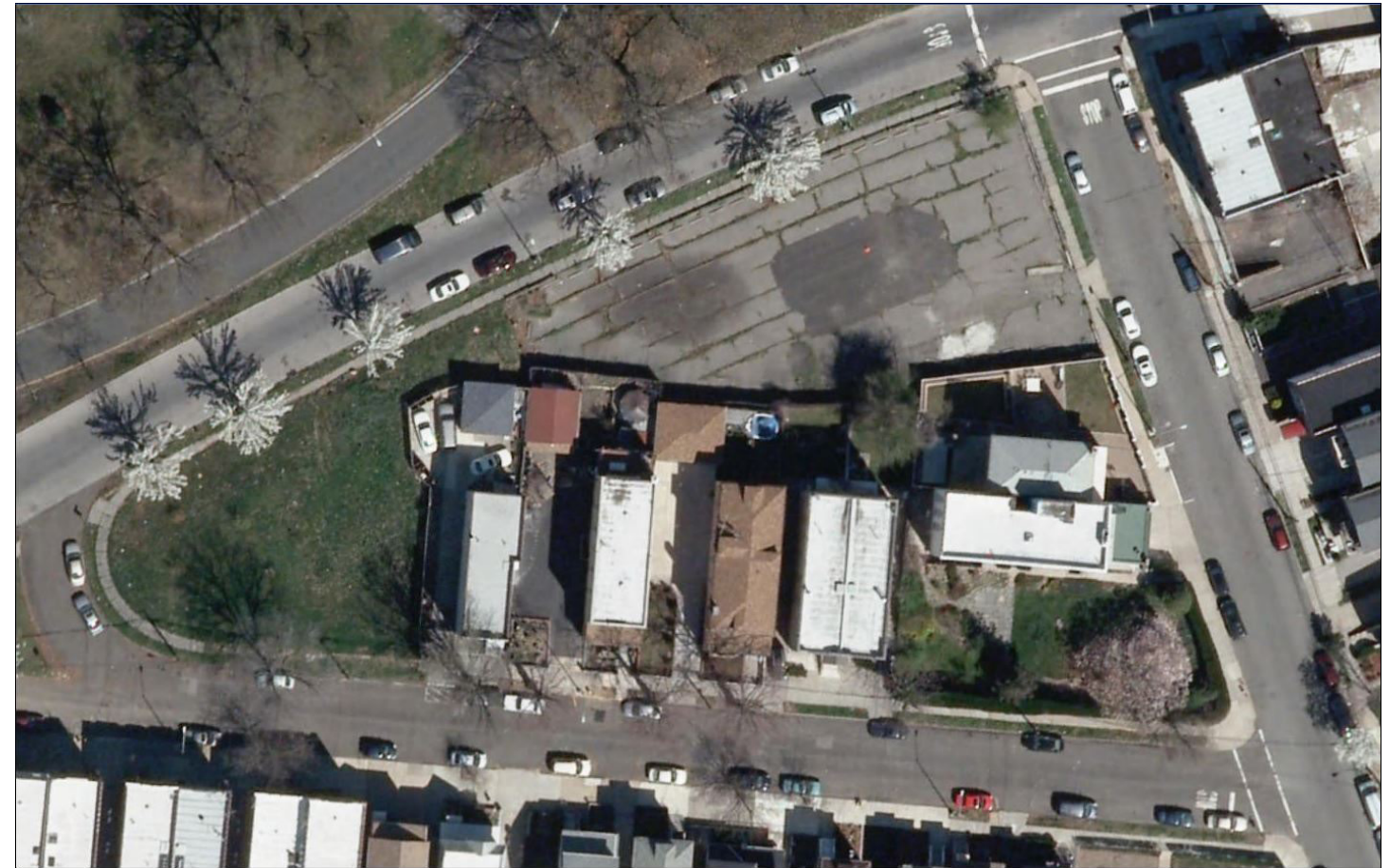
**Colucci Playground**  
Baseball  
Basketball  
Handball  
Play Equipment  
Spray Shower







1 - Aerial View - 1996, parking lot



2 - Aerial View - 2012, abandoned lot













1 - View from corner of Continental Avenue and Hutchinson River Parkway East







1 - View from Hutchinson River Parkway East







1 - View from Continental Avenue







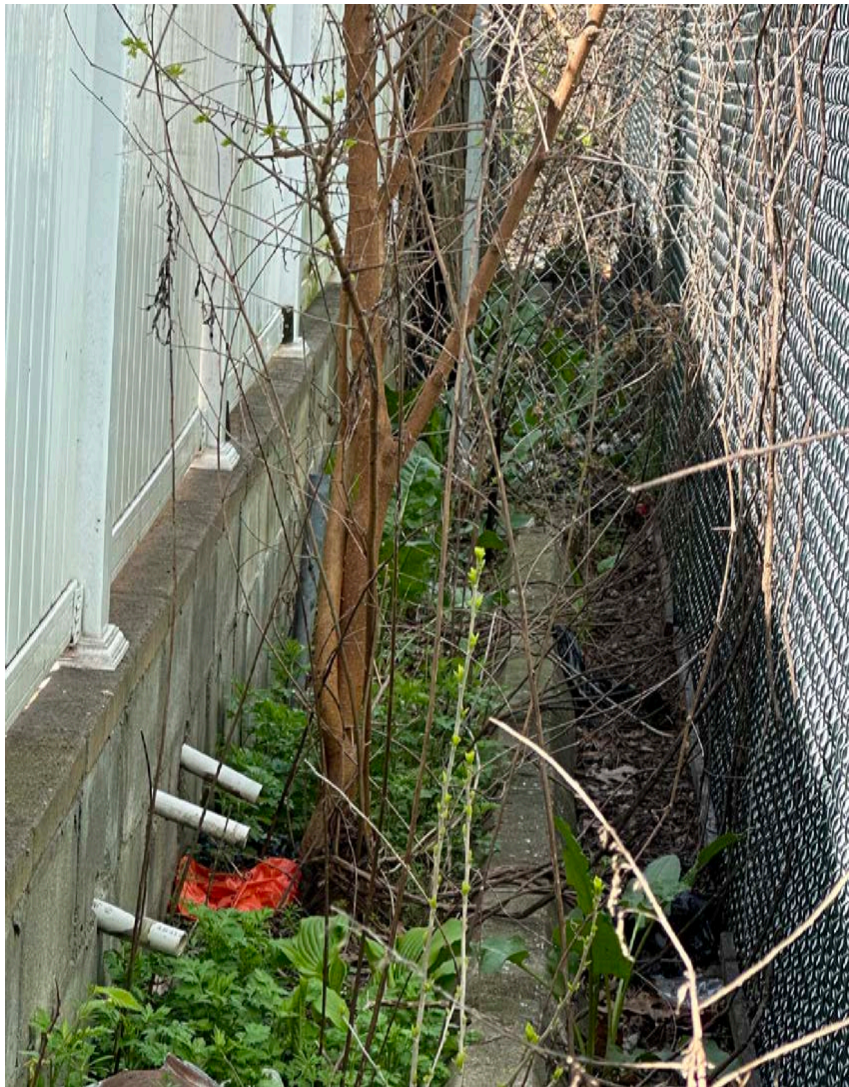
1 - SDOT Staging Area: View from corner of Continental Ave. and Hutchinson River Parkway East



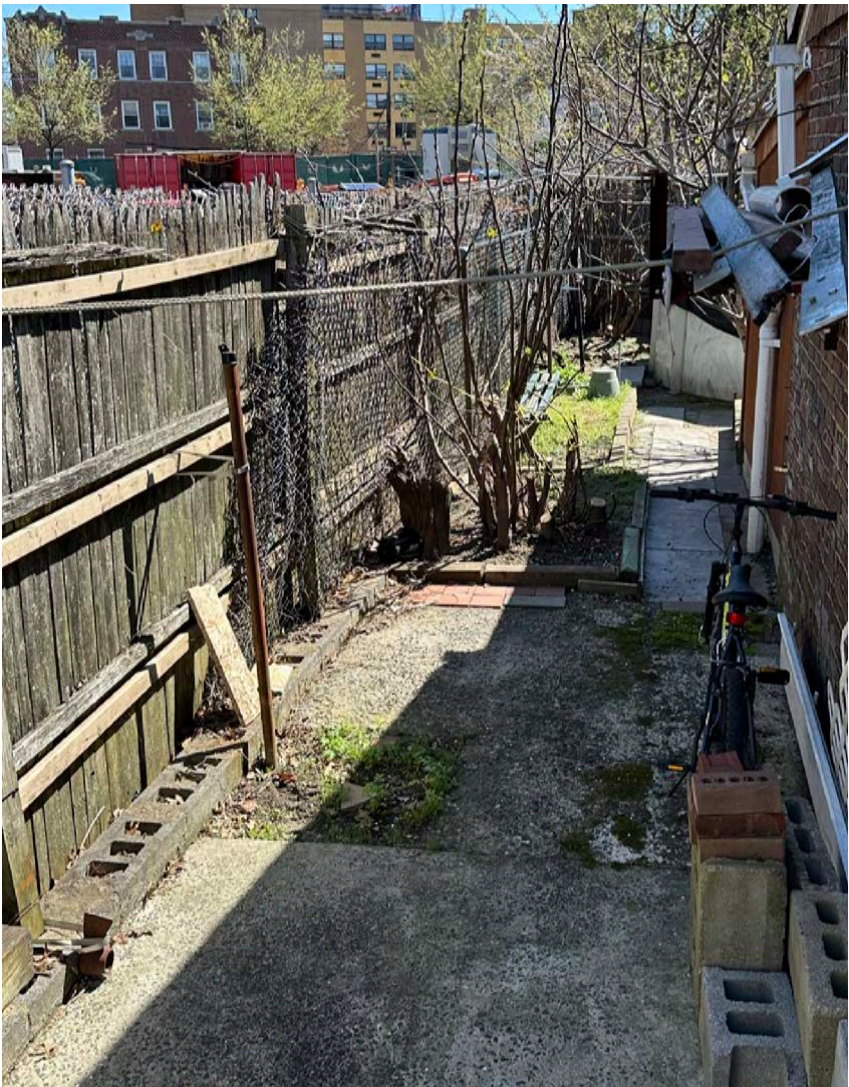
2 - SDOT Staging Area: View of construction trailers from interior of site







1 - Vegetation between SDOT construction fence and private boundary fences



2 - Parks property being used by private residence



3 - View of SDOT construction fence with trees behind







1 - Proposed vehicular access on Hutchinson River Parkway East - Proposed Drop Curb

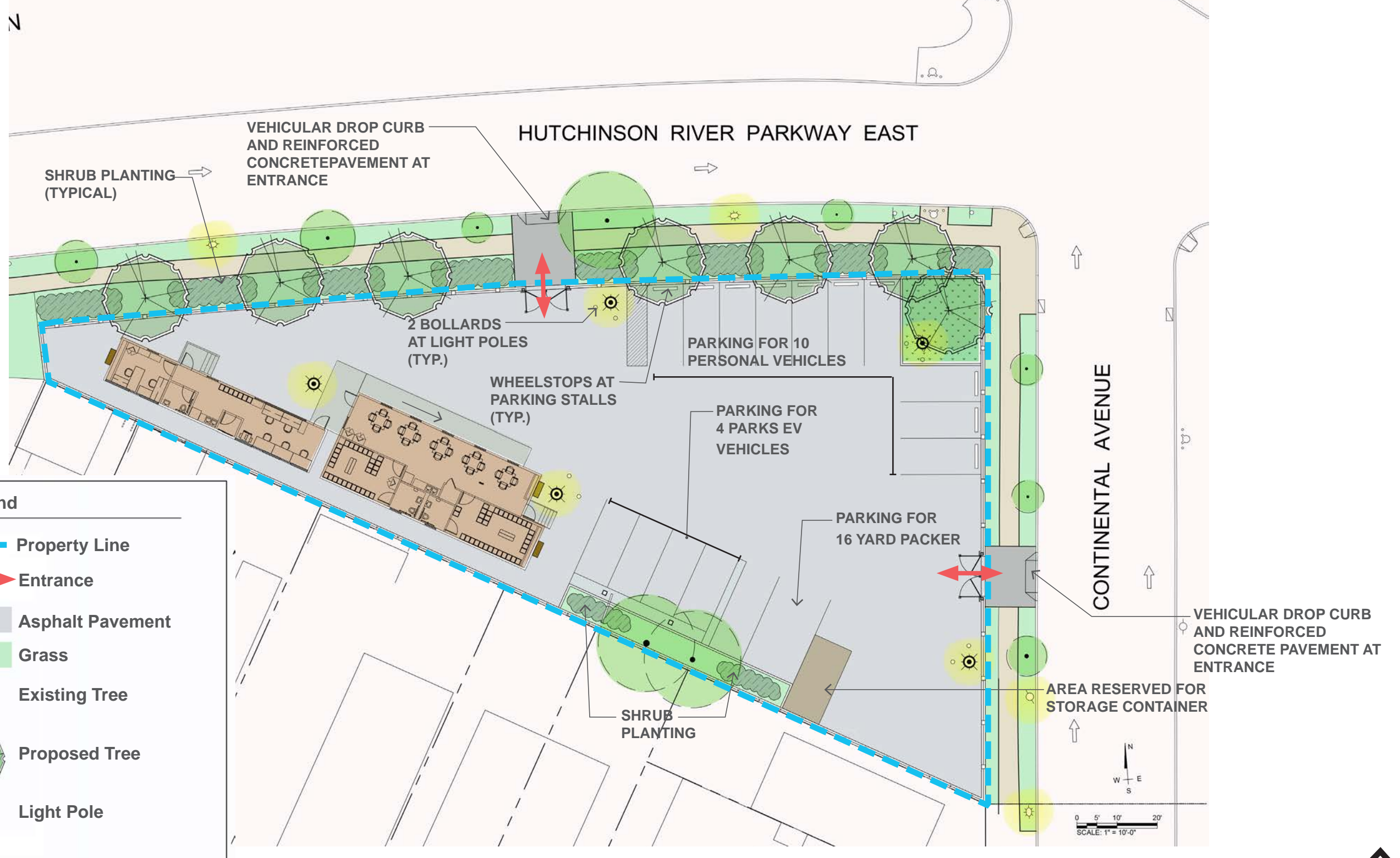


2 - Proposed vehicular access on Continental Ave. - Proposed Drop Curb



NYC Parks














# Legend

-  7'-0" STEEL FENCE DOUBLE GATE
-  TALL / SPORT: 8' - 16' HT.
-  CLF (1" MESH)
-  MEDIUM: 4' - 7' - 6" HT.
-  STEEL







*Orchard Beach Trailers - Double*



**Orchard Beach Trailers - Single**





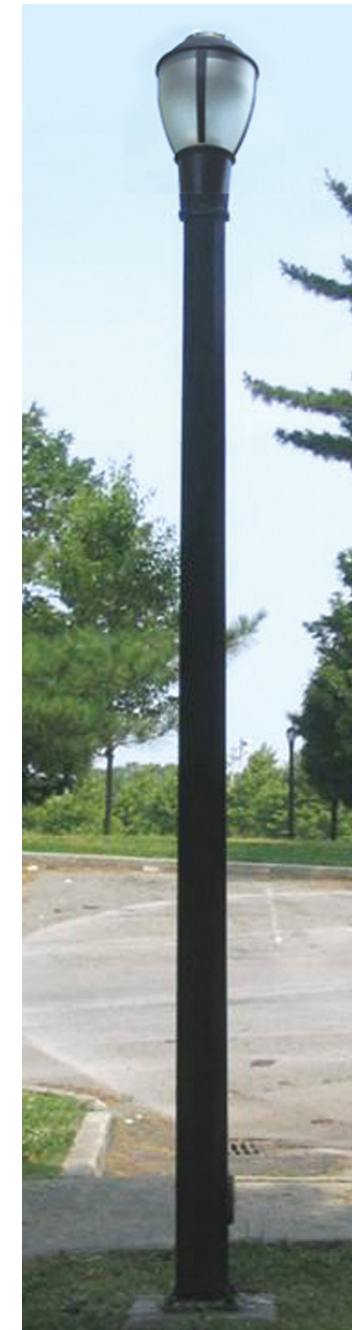




7'-0" Steel Picket Fence



10'x20' Storage Container



World's Fair Light Pole





*Ginkgo biloba*



*Quercus phellos*



*Itea virginicus*



*Rhus aromatica* 'Gro-Low'



