



NYC Criminal Justice

NYC DDC Department of Design and Construction

Borough-Based Jails

Community Design Workshop for The Bronx Facility

December 17, 2024

BX The Bronx Borough-Based Jail

Agenda

- 1 Project Goals and Guiding Principles
- 2 Existing Study of Site and Neighborhood
- 3 Proposed Design:
 - Building Exterior
 - Interior Public Spaces
 - Interior Secure Spaces
 - Public Realm
- 4 Design Breakout Groups
- 5 Summary of Findings:
Next Steps

The Bronx BBJ Facility

Community Engagement and Design Input Process

COMMUNITY ENGAGEMENT

THE BRONX BBJ FACILITY COMMUNITY ENGAGEMENT PLAN

1) Pre-meetings with Elected officials and Neighborhood Advisory Committee (NAC)

- **Dates:**
 - September 30, 2024 – Bronx Borough President Gibson
 - October 11, 2024 – City Councilmember Ayala
 - November 13, 2024 – Neighborhood Advisory Committee (NAC)
- **Purpose:** Introduce the selected Design-Build team, review previous community design input, and share the upcoming community design input plan

2) One community design workshop and one Bronx Community Board 1 presentation

- **Estimated Dates:**
 - Workshop 1 – December 17th 2024
 - Workshop 2 – late January 2025
 - Community Board 1 Presentation – mid-February 2025
- **Purpose:** Receive and incorporate community input before PDC Conceptual Review

3) One additional community presentation

- **Estimated Date:** Spring 2025
- **Purpose:** Receive and incorporate community input before PDC Preliminary Review

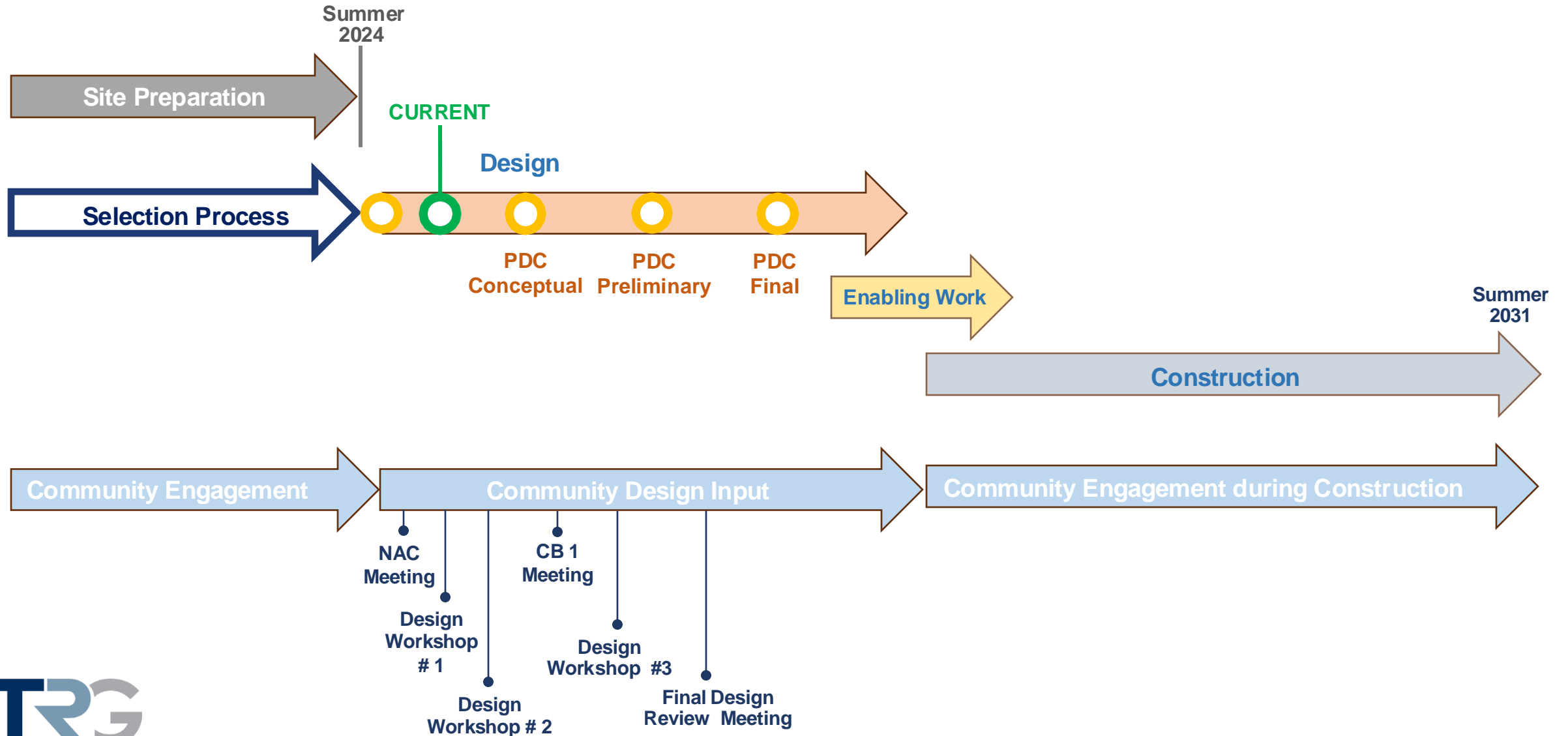
4) One additional community presentation

- **Estimated Date:** Summer 2025
- **Purpose:** To report back before PDC Final Review to show how community feedback is incorporated

The community engagement schedule will be developed in coordination with Percent for Art timeline and Public Design Commission (PDC) timeline

COMMUNITY ENGAGEMENT

THE BRONX BBJ FACILITY COMMUNITY ENGAGEMENT PLAN



COMMUNITY ENGAGEMENT



BBJ Website

<https://rikers.cityofnewyork.us/>



Designated Phone Number

914-819-2153



Weekly Look Ahead

Posted to website



72-Hour Advisories for Impactful
Construction Activities

Posted to website



Community Construction
Liaison & Field Office

Angel Pinto - The Bronx BBJ CCL

914-819-2153 / ThebronxCCL@bbjnyc.com

Bilingual Spanish

142nd Street @ Concord Ave

Monday – Friday 7:00am - 3:30pm



The Bronx BBJ Facility

Project Goals and Guiding Principles

PROJECT GOALS AND GUIDING PRINCIPLES

Our Purpose: To design and build safe and humane facilities that support NYC's commitment to justice reform.

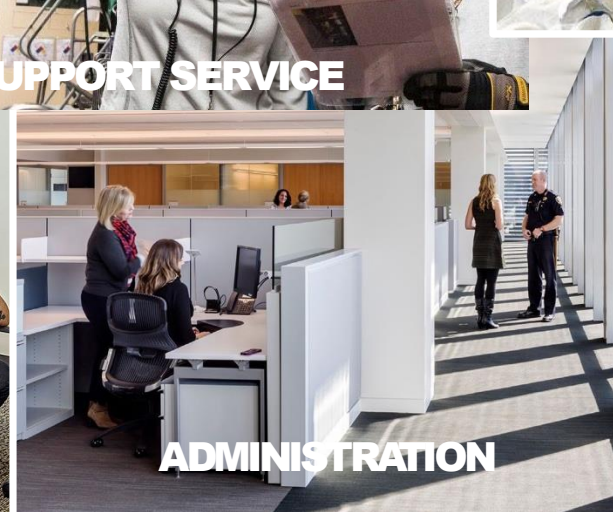
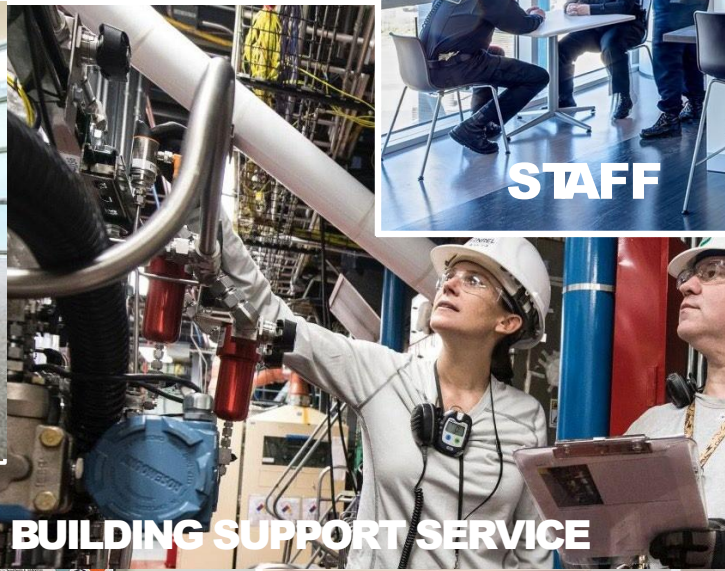
Program Goals:

- Facility grounded in **dignity and respect**
- **Safe, humane, secure**, and efficient environment
- **Exemplary public architecture**
- Relate to the City it is in and **create a sense of place**
- **Thoughtful engagement** with city agencies and community partners
- **Minimize impacts** to neighboring properties/community
- Provide **for site safety**
- Optimize overall operations and maintenance efficiency
- Complete within budget and on schedule
- Robust **minority and women-owned** business enterprise participation
- Exemplify DDC's **principles of excellence** in design, construction, and project delivery

PROJECT GOALS AND GUIDING PRINCIPLES

- **1,040 beds for men**
 - Maximizes flexibility of movement between housing areas for populations that cannot mix
 - Balanced therapeutic capacity
 - Retains programmatic elements, including the gymnasium, multi-purpose rooms, and educational and workforce development spaces
- **120 accessory parking spaces below grade**
 - Parking for authorized City vehicles
- **40,000 SF of community/retail space**
 - Will operate separately from the jail facility

PROJECT GOALS AND GUIDING PRINCIPLES



PROJECT GOALS AND GUIDING PRINCIPLES

THE BRONX BBJ FACILITY – PROJECT GOALS

The design will be fashioned to provide **INDIVIDUAL DIGNITY AND RESPECT** to all who may be in custody, who work in the facility, or visit the facility and those in the community.



PROJECT GOALS AND GUIDING PRINCIPLES

THE BRONX BBJ FACILITY – PROJECT GOALS



HUMANE, SECURE AND POSITIVE – The design combines correctional security with an open, normative and positive environment for all persons in custody and for people working in the facility.

PROJECT GOALS AND GUIDING PRINCIPLES

THE BRONX BBJ FACILITY – PROJECT GOALS



BRONX COUNTY COURTHOUSE

A CIVIC ASSET OF EXCELLENCE
that becomes an enduring asset to
the Bronx



PROJECT GOALS AND GUIDING PRINCIPLES

THE BRONX BBJ FACILITY – PROJECT GOALS

Will provide **CONNECTION TO THE COMMUNITY** that becomes a part of the daily life in East Mott Haven



LOCAL ARTWORK / BRONX OUTREACH ORGANIZATIONS
(FOR ILLUSTRATIVE PURPOSES ONLY)

PROJECT GOALS AND GUIDING PRINCIPLES

THE BRONX BBJ FACILITY – PROJECT GOALS



DAYROOM ENVIRONMENT AT ORANGE COUNTY CORRECTIONAL FACILITY IN GOSHEN, NY
(FOR ILLUSTRATIVE PURPOSES ONLY)

LUMINOUS – A design that is light-filled with multiple sources of daylight and well-lit spaces to create a calm and safe environment.

PROJECT GOALS AND GUIDING PRINCIPLES

THE BRONX BBJ FACILITY – PROJECT GOALS

CONNECTION TO NATURE – Through the use of rooftop plantings, extensive landscaping on the streetscapes and provision of biophilic imagery to bring the calming effects of nature into the facility.



**STREETSCAPE WITH LANDSCAPE AT 168TH STREET, MANHATTAN
(FOR ILLUSTRATIVE PURPOSES ONLY)**



**LAS COLINAS DETENTION FACILITY (FOR ILLUSTRATIVE PURPOSES ONLY)
SAN DIEGO, CA**

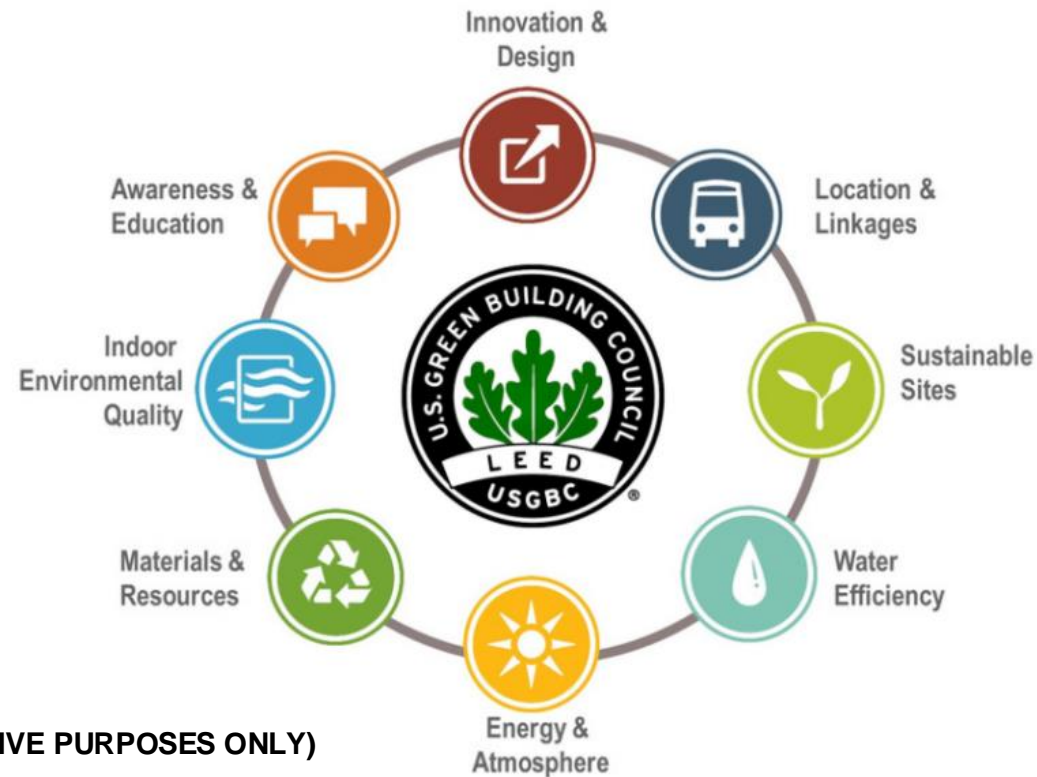
PROJECT GOALS AND GUIDING PRINCIPLES

THE BRONX BBJ FACILITY – PROJECT GOALS



VIA VERDE RESIDENTIAL DEVELOPMENT (FOR ILLUSTRATIVE PURPOSES ONLY)
BRONX, NY

SOCIALLY RESPONSIBLE AND SUSTAINABLE– The facility will work to provide an operationally efficient and easy-to-maintain building that exceeds the City’s mandated level of sustainability. Our goal is to achieve LEED Platinum with extensive renewable energy generation that increases the building’s resiliency.



PROJECT GOALS AND GUIDING PRINCIPLES

THE BRONX BBJ FACILITY – PROJECT GOALS

INSPIRATIONAL – The design of the facility will transform the site into a civic asset that will inspire the local community and all who visit the facility.



(FOR ILLUSTRATIVE PURPOSES ONLY)



PROJECT GOALS AND GUIDING PRINCIPLES

SUPPORTIVE ENVIRONMENTS

The design will focus on creating dignified, safe, and healthy environments for all within. Dignity and respect will be conveyed through the creation of a feeling of lightness and openness, with finishes that evoke a home life.

CONNECTED COMMUNITIES

The design will mediate the building's scale to create an appropriate complement to the neighboring, lower-scale residential neighborhood. Retail and community spaces at the street will provide a meaningful community connection. Landscape treatments at the sidewalk will establish a welcoming environment.

CIVIC ASSETS

While the building will be designed to relate to the community, it will also project a civic presence.

ENDURING RESOURCES

The building design will incorporate robust building systems that will stand the test of time, facilitating long term maintenance, and ensuring resiliency.

The Bronx BBJ Facility

Existing Site and Neighborhood

BOROUGH MAP

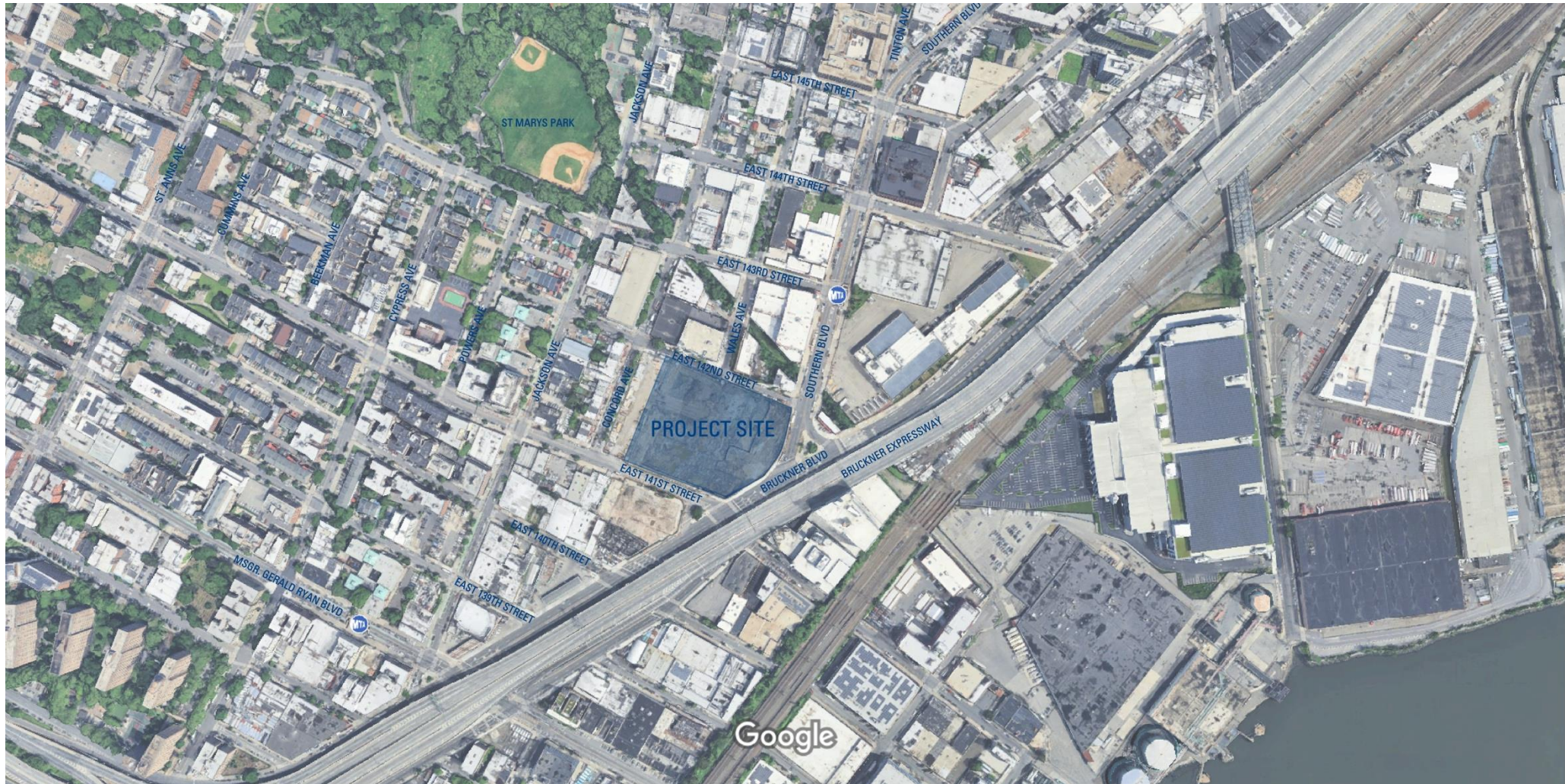
THE BRONX BBJ FACILITY – LOCATION PLAN



FOR ILLUSTRATIVE PURPOSES ONLY

NEIGHBORHOOD MAP

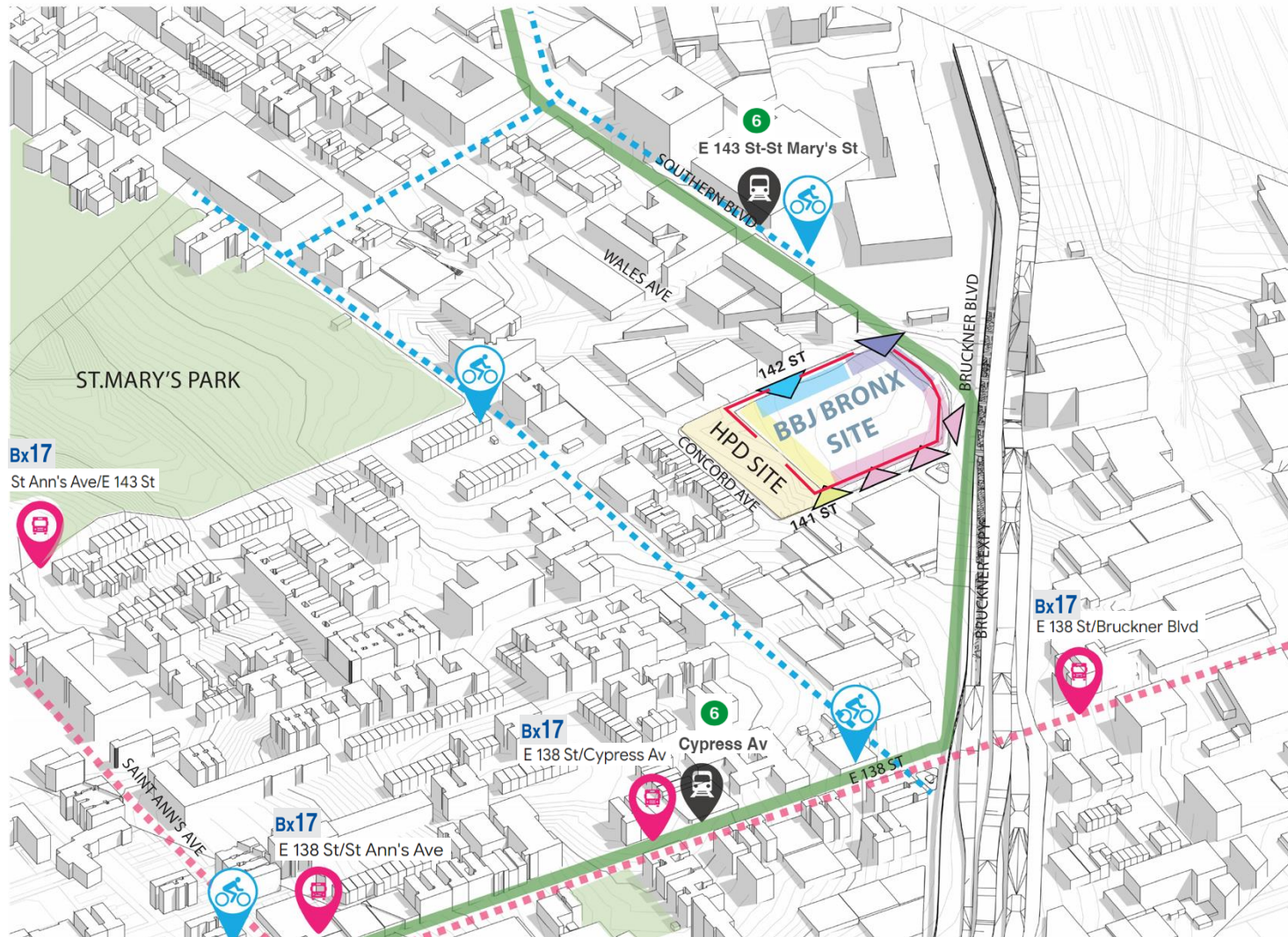
THE BRONX BBJ FACILITY – AERIAL VIEW OF SITE



FOR ILLUSTRATIVE PURPOSES ONLY

PROPOSED DESIGN

THE BRONX BBJ FACILITY – TRANSPORTATION/ACCESS



LEGEND

- | | |
|-----------------|------------------|
| Bronx Site | Citibike Station |
| Park | Bicycle Lane |
| Visitor Entry | Bus Stop |
| Staff Entry | Bus Route |
| Community Entry | |
| Vehicular Entry | |
| Subway Station | |
| Subway Line | |

The visitor entry is located on the corner of Southern Boulevard and 142nd Street. This location is in proximity to the 6 train E 143st - St Mary's St subway station.

The staff lobby is located on 142nd Street, in a calm corner of the building.

FOR ILLUSTRATIVE PURPOSES ONLY

The Bronx BBJ Facility

Proposed Design: Building Exterior

PROPOSED DESIGN

NEIGHBORHOOD SCALE



HOUSING



HOUSING



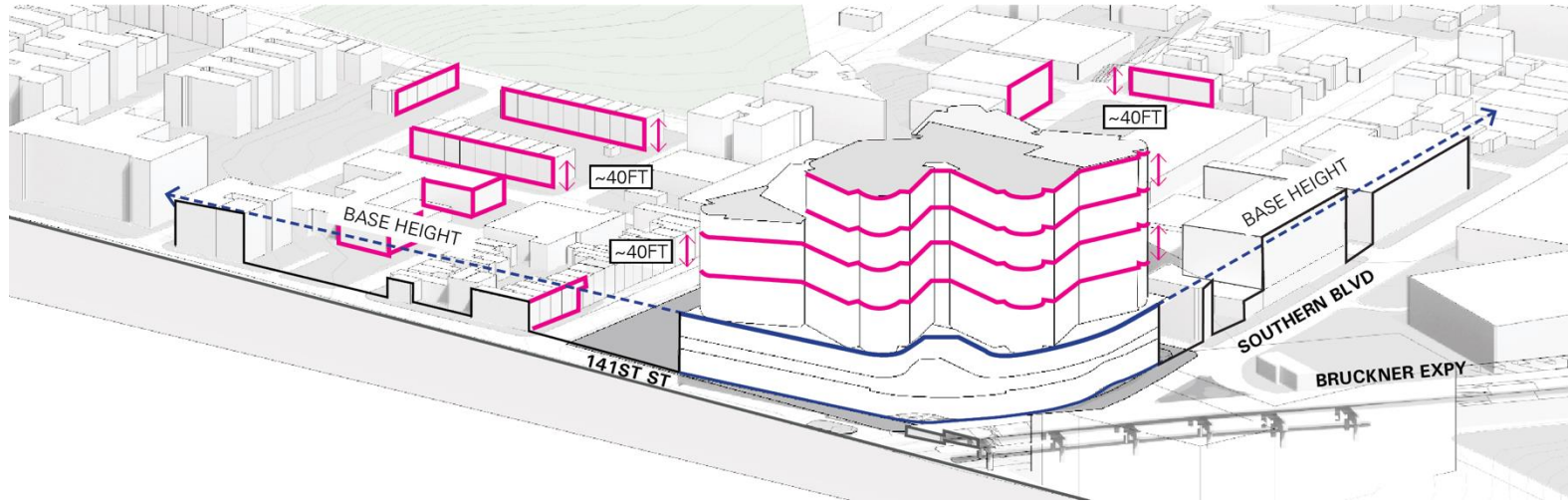
HOUSING



FOR ILLUSTRATIVE PURPOSES ONLY

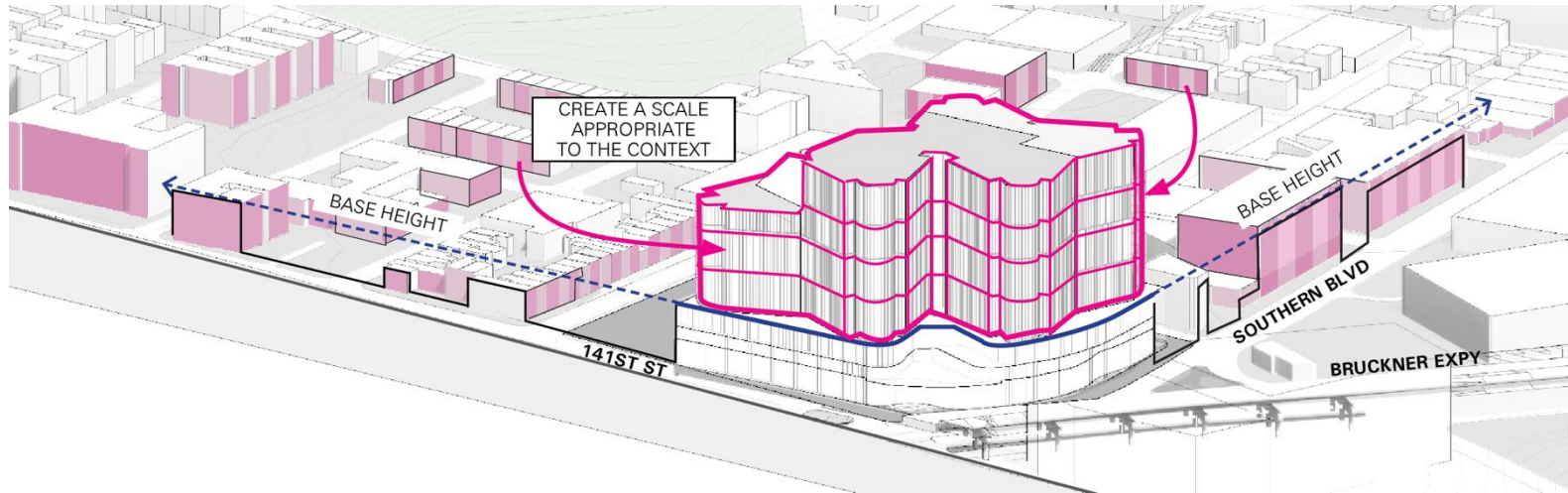
PROPOSED DESIGN

THE BRONX BBJ FACILITY – DESIGN APPROACH



BUILDING HEIGHT

Subdivide building to relate to buildings in the neighborhood using vertical features.

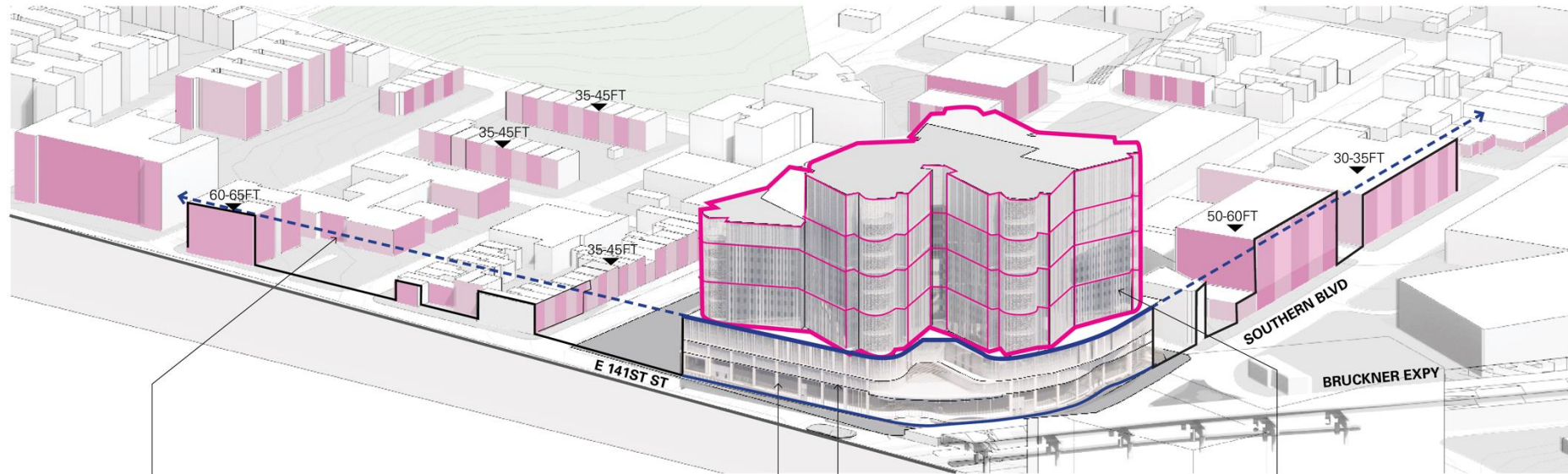


BUILDING WIDTH AND SCALE

Subdivide building to relate to buildings in the neighborhood using horizontal features.

PROPOSED DESIGN

THE BRONX BBJ FACILITY – DESIGN APPROACH



THE BASE
RELATES TO
SCALE OF
NEIGHBORHOOD
AT 60' TALL.

THE TOWER FACADE RELATES
TO THE NEIGHBORING
RESIDENTIAL BUILDINGS'
EXTERIOR WINDOWS AND
OPENINGS IN SCALE.

THE EXTERIOR DESIGN
IS ALIGNED WITH THE
ARCHITECTURAL LANGUAGE
OF THE SURROUNDING
MASONRY RESIDENTIAL.

THE EXPRESSION OF THE
BASE RESONATES WITH THE
ADJACENT INDUSTRIAL AND
RESIDENTIAL BUILDINGS.

HEIGHT IS REFLECTED
ON THE SCALE OF
THE NEIGHBORING
BUILDINGS.



RESIDENTIAL BUILDINGS ADJACENT TO THE SITE

INDUSTRIAL BUILDINGS ADJACENT TO THE SITE

DESIGN SHOWN FOR ILLUSTRATIVE PURPOSES ONLY

PROPOSED DESIGN

RENDERING – AERIAL VIEWS



PROPOSED DESIGN

RENDERING – STREET VIEW ALONG BRUCKNER BLVD



PROPOSED DESIGN

RENDERING – STREET FROM BRUCKNER BLVD LOOKING SOUTHWEST



DESIGN SHOWN FOR ILLUSTRATIVE PURPOSES ONLY

PROPOSED DESIGN

RENDERING – MAIN ENTRY



DESIGN SHOWN FOR ILLUSTRATIVE PURPOSES ONLY

The Bronx BBJ Facility

Proposed Design: Interior Public Spaces

PROPOSED DESIGN

RENDERING – PUBLIC LOBBY



PROPOSED DESIGN

RENDERING – PUBLIC LOBBY



PROPOSED DESIGN

RENDERING – PUBLIC LOBBY



PROPOSED DESIGN

RENDERING – PUBLIC LOBBY



PROPOSED DESIGN

RENDERING – VISITING AREA



DESIGN SHOWN FOR ILLUSTRATIVE PURPOSES ONLY

PROPOSED DESIGN

RENDERING – VISITING AREA



The Bronx BBJ Facility

Proposed Design: Interior Secure Spaces

PROPOSED DESIGN

RENDERING – CELL DESIGN



DESIGN SHOWN FOR ILLUSTRATIVE PURPOSES ONLY

PROPOSED DESIGN

RENDERING – TYPICAL SINGLE STORY DAYROOM



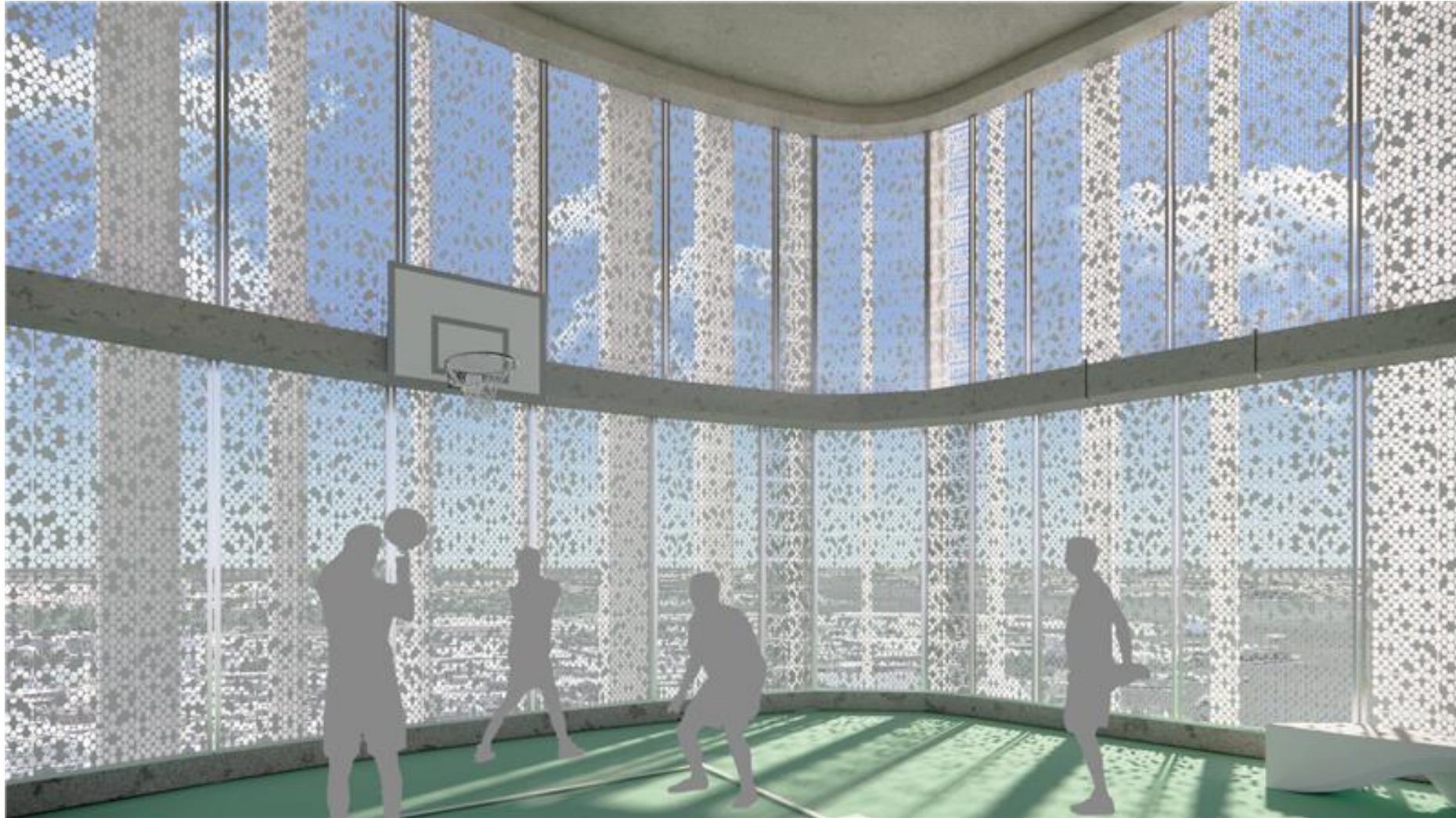
PROPOSED DESIGN

RENDERING – TYPICAL DOUBLE STORY DAYROOM



PROPOSED DESIGN

RENDERING – OUTDOOR RECREATION AT EACH HOUSING UNIT



The Bronx BBJ Facility

Proposed Design: Public Realm

GOALS AND GUIDING PRINCIPLES

Create a **VIBRANT**, **WELCOMING** and **CLIMATE RESPONSIVE** street level environment to be shared with the community that adds to the social fabric of the neighborhood.

Civic Corridor



The streetscape can link the residential, park and waterfront landscapes to transit hubs and commercial districts of Mott Haven and Port Morris.

Park Inspired



The streetscape can employ park inspired paths, seating and gathering areas, plantings and outcrops to evoke the relaxing feeling of nearby St. Mary's Park.

Neighborhood Hub



Welcoming entrance plazas can provide neighborhood meeting areas for the community. Planted islands can create shaded seating areas and highlight building entrances.

Place of Respite



Streetside plantings can provide visual separation between the sidewalk and fast-moving traffic on Southern & Bruckner Boulevards and help to reduce traffic noise.

GOALS AND GUIDING PRINCIPLES

CONNECTION TO LOCAL PRECEDENTS — Build on current streetscape improvement projects focusing on heat island reduction and stormwater management with increased planting areas for neighborhood continuity.

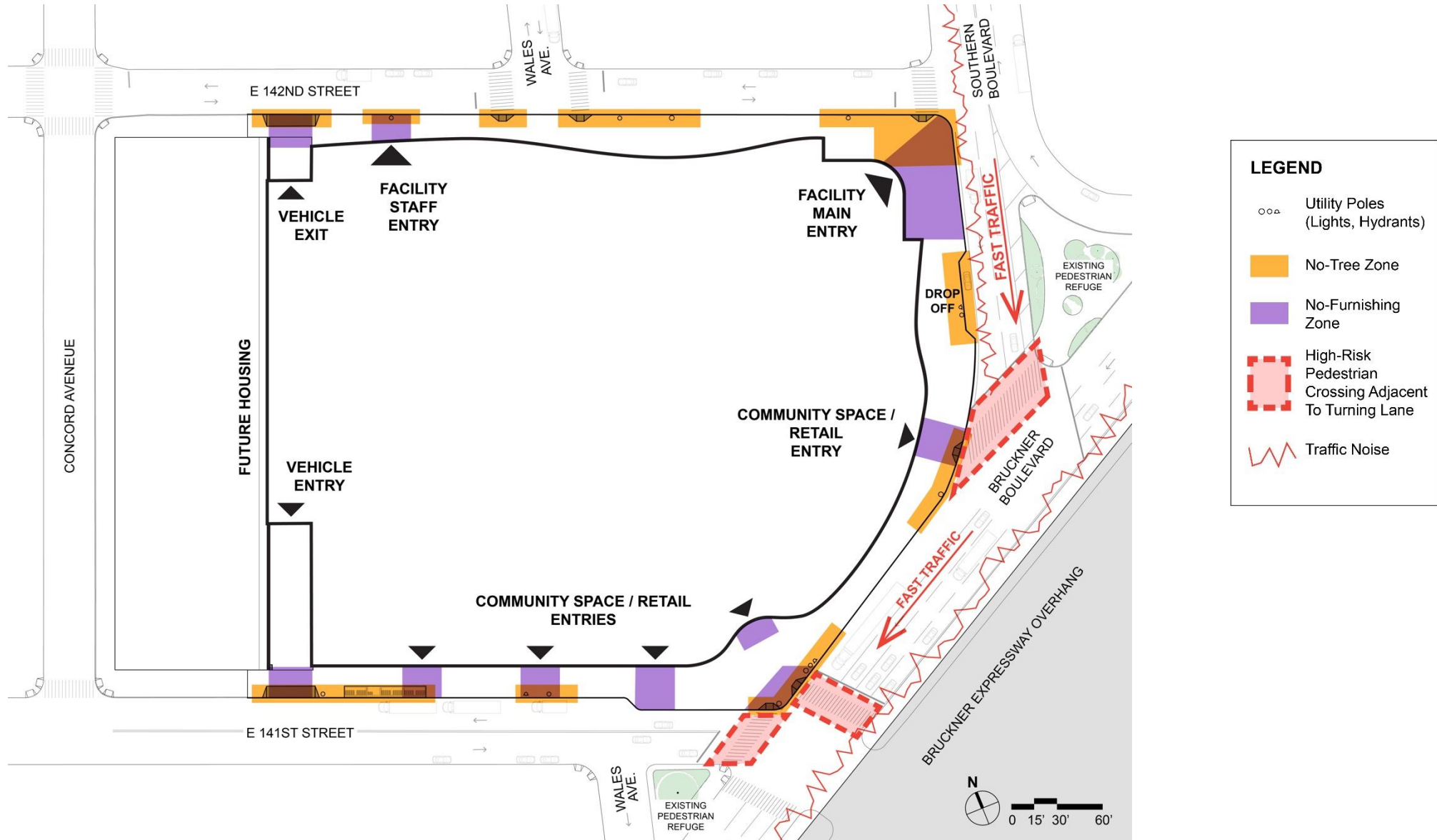


**STREETSIDE STORMWATER PLANTING AT LAFAYETTE AVE., BRONX
FOR ILLUSTRATIVE PURPOSES ONLY**



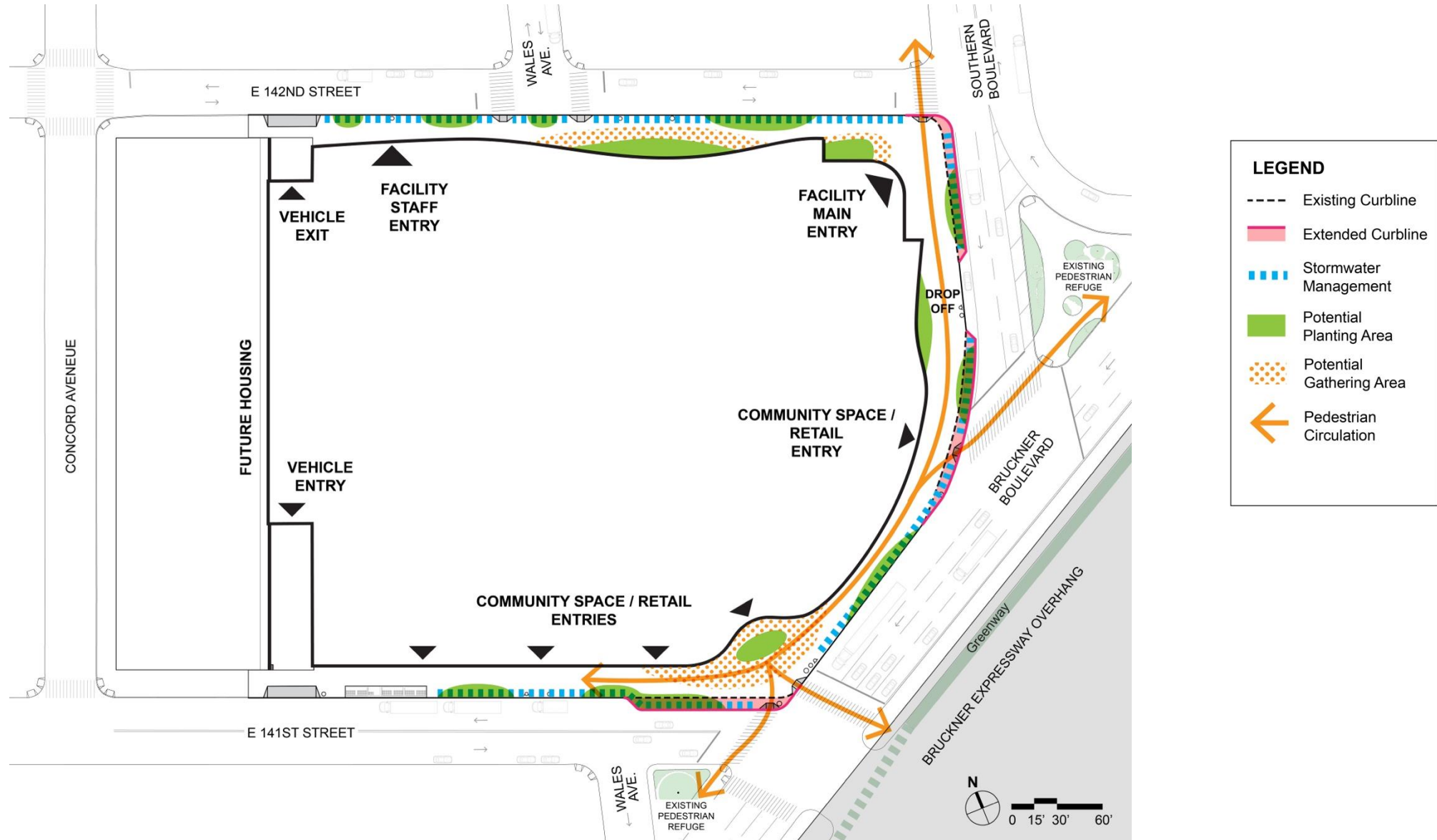
**PLANTINGS REDUCE HEAT ISLAND EFFECT ON WILLOUGHBY ST., BROOKLYN
FOR ILLUSTRATIVE PURPOSES ONLY**

PROPOSED DESIGN - CONSTRAINTS



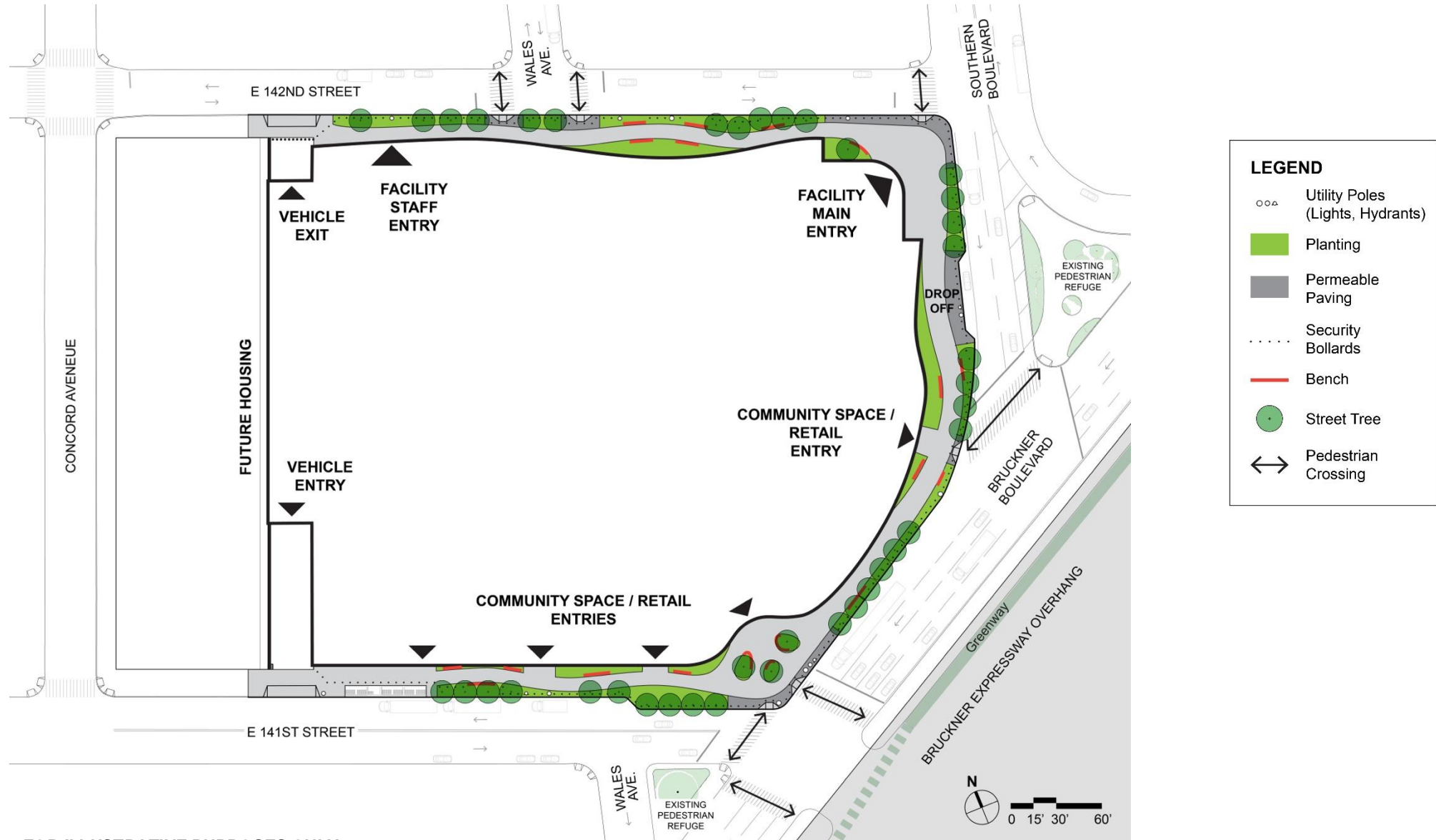
FOR ILLUSTRATIVE PURPOSES ONLY

PROPOSED DESIGN - OPPORTUNITIES



FOR ILLUSTRATIVE PURPOSES ONLY

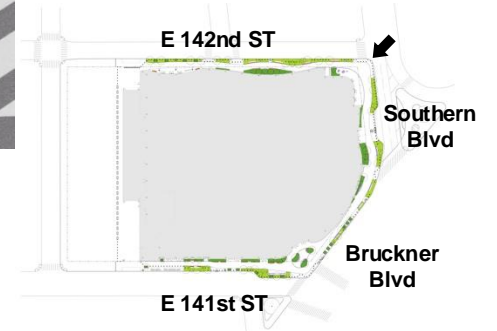
PROPOSED DESIGN



FOR ILLUSTRATIVE PURPOSES ONLY

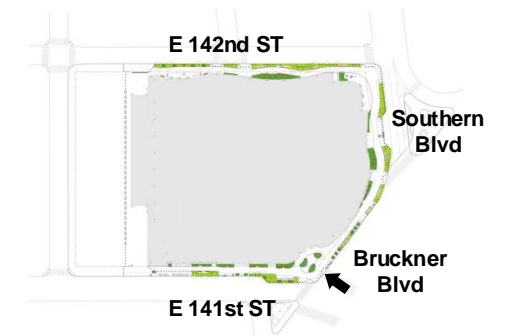
PROPOSED DESIGN

RENDERING – FACILITY ENTRY



PROPOSED DESIGN

RENDERING – COMMUNITY/RETAIL ENTRY



PROPOSED DESIGN

RENDERING – SIDEWALK/STREETSCAPE



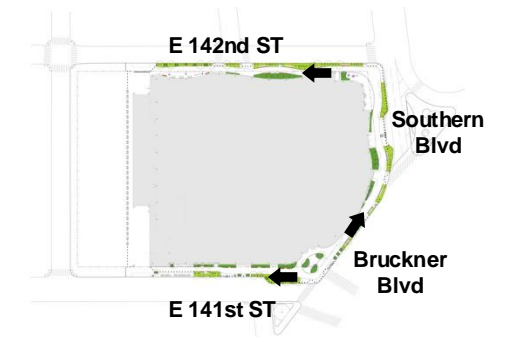
E 141st STREET



BRUCKNER BOULEVARD



E 142nd STREET



DESIGN SHOWN FOR ILLUSTRATIVE PURPOSES ONLY

The Bronx BBJ Facility

Percent for Art

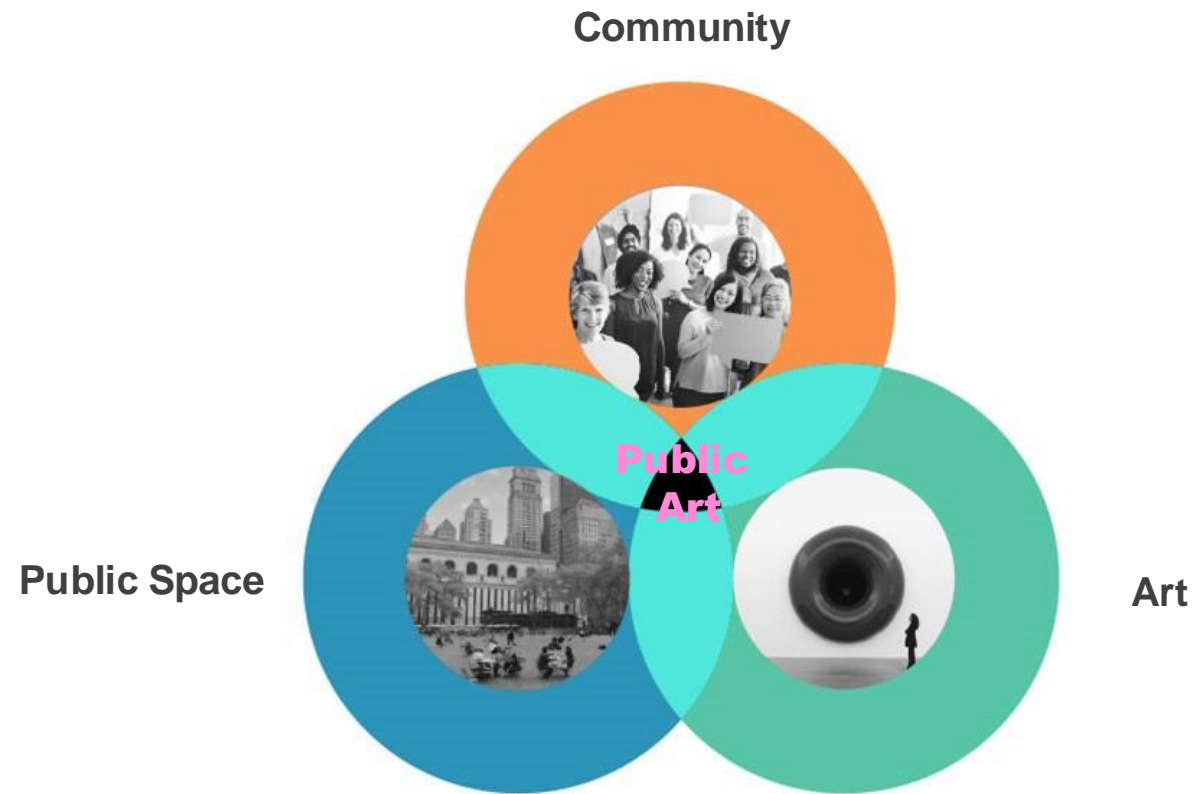


Project Initiation – Artist Selection

Borough-Based Jails Program (BBJP): The Bronx

January 17, 2024

What is Public Art ?



The NYC Percent for Art Program

In 1982, Local Law 65, the Percent for Art Law was passed, which states that 1% of the capital funds appropriated for newly constructed or reconstructed City-owned buildings or sites must be allocated for works of art.



Dedication of *Growth*, the first Percent for Art commission, 1985



Growth by Jorge Luis Rodrigues at East Harlem Art Park, 2021

Percent for Art Eligibility Criteria

Commissions are installed in new or reconstructed City-owned buildings and structures, such as:

- COURTHOUSES
- PARKS
- CULTURAL INSTITUTIONS
- POLICE PRECINCTS
- FIRE STATIONS
- STREETSCAPES
- PLAZAS
- LIBRARIES
- SCHOOLS
- HEALTH CENTERS
- DETENTION CENTERS



Bill & Mary Buchen
Sound Playground, 1992
PS 23, 2151 Washington Ave, Bronx, NY 10457

WHAT IS THE PROCESS FOR COMMISSIONING A NEW WORK OF ART?



Melissa Calderón, *Para Roberto*, 2019
Roberto Clemente Plaza: 149th Street and 3rd Ave, The Bronx

Artist Selection Panel Composition

Voting Panelists

- DCLA Commissioner or Designee (Panel Chair)
- Representative of Percent for Art Program (DCLA)
- Representative of Design Agency (DDC)
- Representative of Sponsor Agencies (DOC, MOCJ, CHS)
- Three representatives of the public who are arts professionals - knowledgeable about public art, the project, and the community in which the project will be located

Advisory Panelists

- Architect / Design Team
- Public Design Commission (PDC)
- Program Staff (DCLA, DDC, DOC, MOCJ, CHS)
- Local Borough President, Council Member and Community Board Representatives
- Local organizations and community groups
- General public

Artist Selection Panel Process

First Meeting

- Introduction to Percent for Art
- Design Team presents the project, highlighting potential artwork locations
- Community context and insights are shared by stakeholders
- Review past work of artists under consideration (20-30)
- Panel narrows the list to identify finalists and alternates to invite to participate at the Second Panel Meeting.

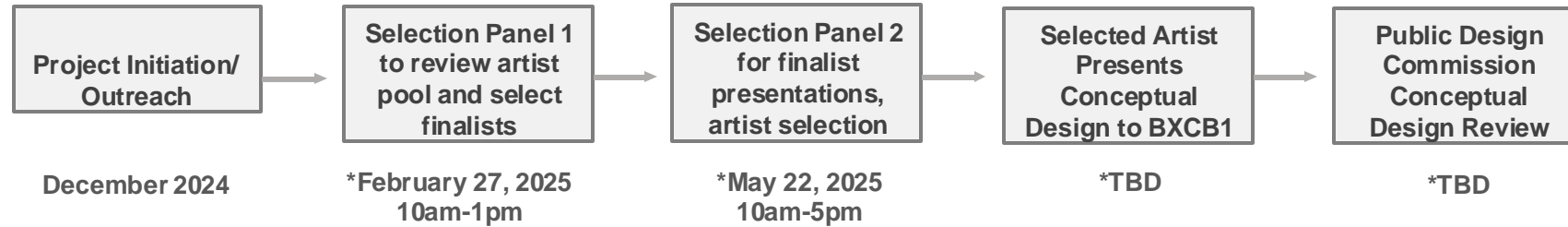
Second Meeting

- Finalists are briefed on the project in advance at an orientation meeting
- Each finalist presents a site-specific proposal, followed by Q&A from the panel
- Discussion and voting
- Selected artist is awarded the commission

Borough Based Jails, The Bronx

Percent for Art Process

Community Engagement



*Anticipated dates

HOW CAN I PARTICIPATE IN THE PERCENT FOR ART PROCESS?



Sarah Sze
Momentum and its Conservation, 2010
Mott Haven Educational Campus, 730 Concourse Village W, Bronx NY 10455

Panelist Considerations

Voting Panelists should be:

- 18 Years of age
- Arts professional, knowledgeable about:
 - contemporary art
 - the community where the project is taking place
- **Provide a short letter of interest with email address and phone number**

Advisory Panelists should be:

- 18 Years of age
- Knowledgeable about:
 - community issues and interests where the project is taking place
- **Provide name/email/address/affiliation**

Email: PercentInfo@culture.nyc.gov

with Bronx BBJ in the subject line



Cai Guo-Qiang
One Stone, 2007

Bronx County Hall of Justice
265 E 161st St, Bronx NY 10451

Artist Considerations

DCLA is particularly interested in engaging artists for this project whose work aligns with the following **artwork goals**:

- Contributes to a more humane, dignified, safe and welcoming atmosphere for all
- Transforms spaces
- Is culturally relevant and inclusive
- Supports healing and well-being
- Enhances the experience for all users, including people in custody, facility staff, visitors, and neighbors

**Submit material or suggestions for The Bronx BBJ by
February 2, 2025**

Artists:

Respond to [Request for Expression of Interest \(RFEI\)](#)

Suggestions:

Email PercentInfo@culture.nyc.gov, with Bronx BBJ in subject



Hank Willis Thomas
Unity, 2020

Tillary and Adams Streets, Brooklyn, NY



THANK YOU

FOR MORE INFORMATION

NYC Department of Cultural Affairs - Percent for Art Program

Website: www.nyc.gov/culture

Email: PercentInfo@culture.nyc.gov , Phone: 212-298-8700

AGENCY PROJECT CONTACTS

NYC DDC: Norberto Acevedo, Director, Office of Community Outreach & Notifications, Public Buildings

AcevedoNo@ddc.nyc.gov

Design Breakout Groups

Breakout Groups – (4 x 15 minutes) – 60 minutes

- A** Building Exterior
- B** Interior Public Spaces
- C** Interior Secure Spaces
- D** Public Realm

The Bronx BBJ Facility

Summary of Findings: Next Steps



NYC Criminal Justice

NYC DDC Department of Design and Construction



Borough-Based Jails

Thank You

BX The Bronx Borough-Based Jail