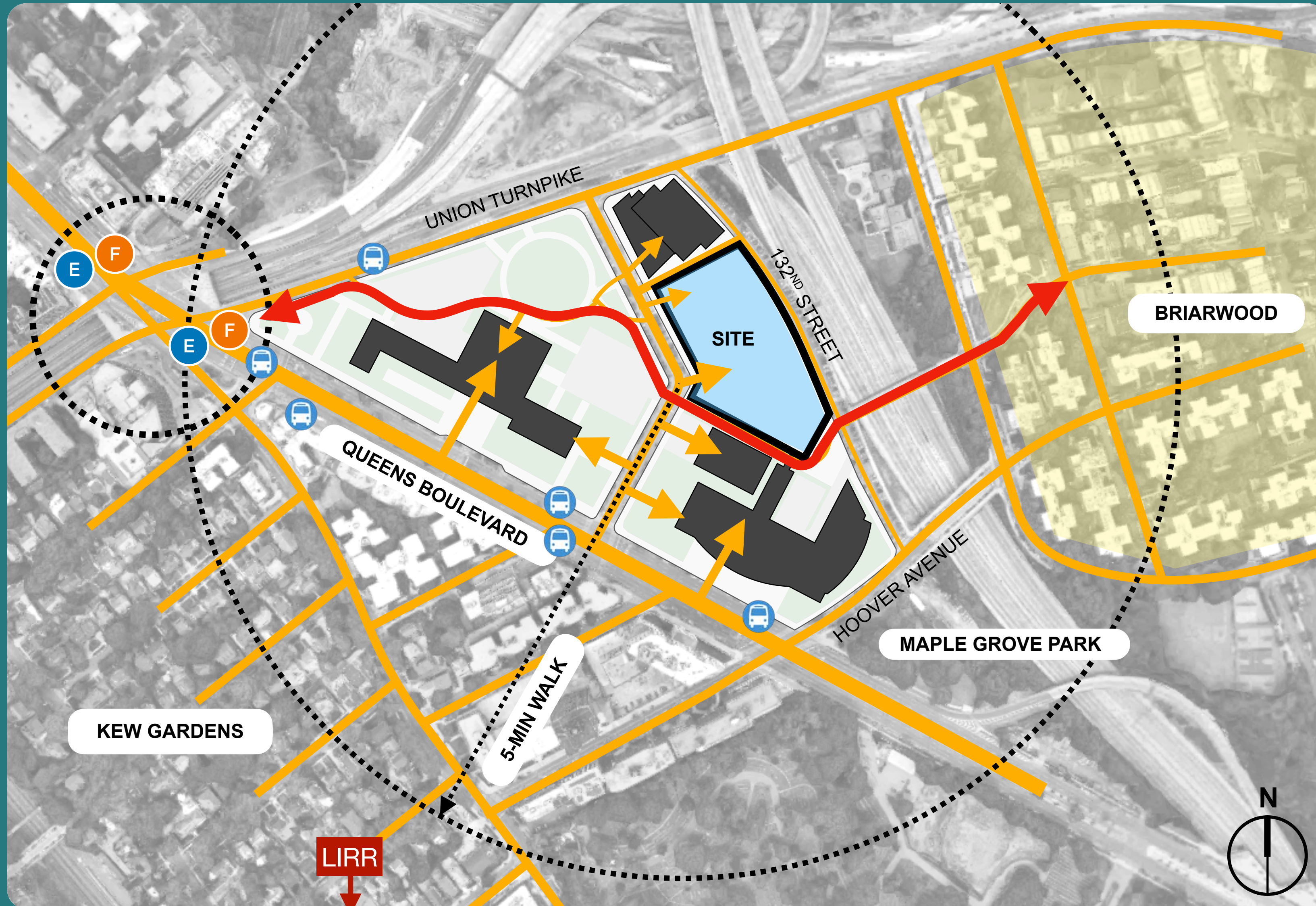
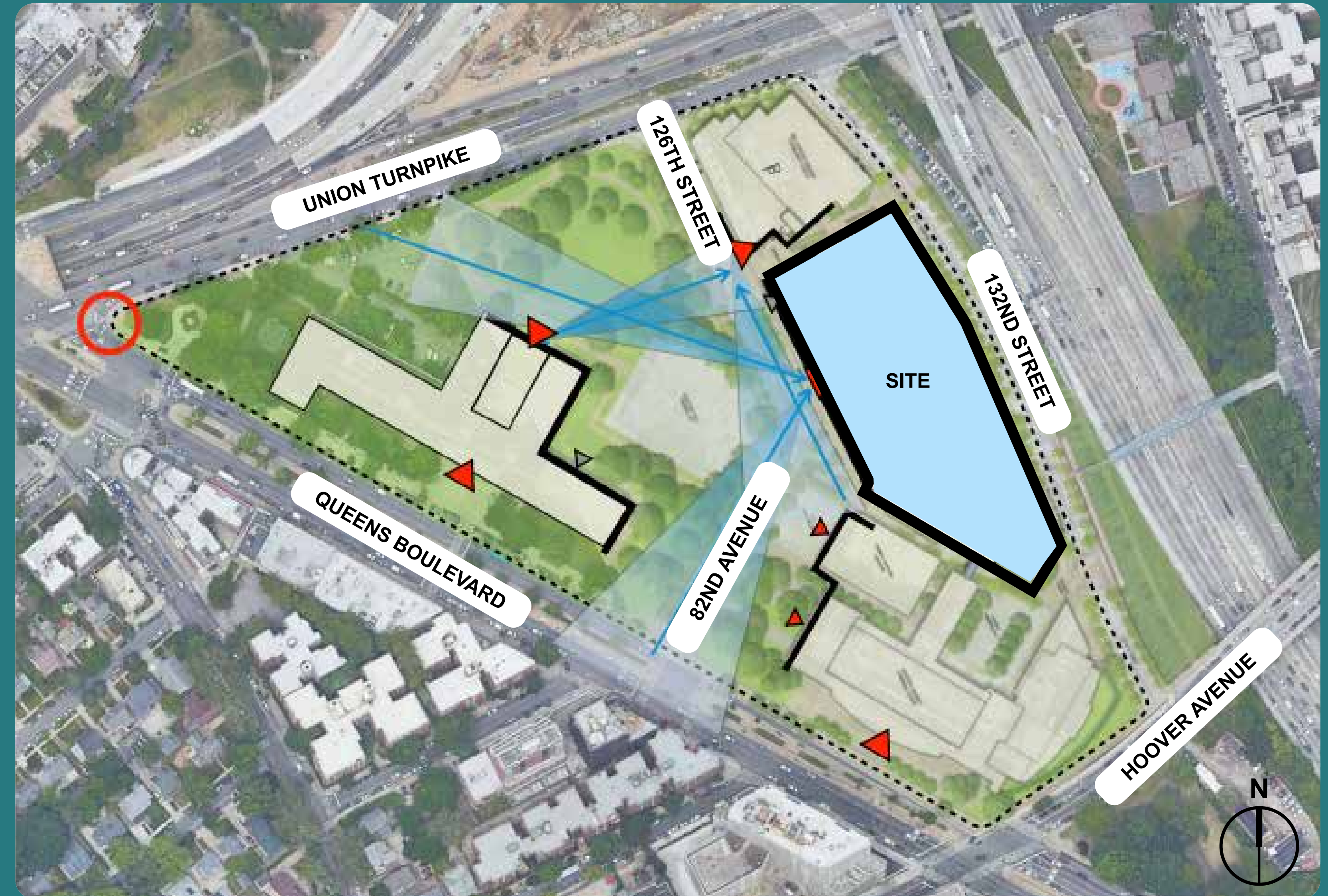


PUBLIC REALM

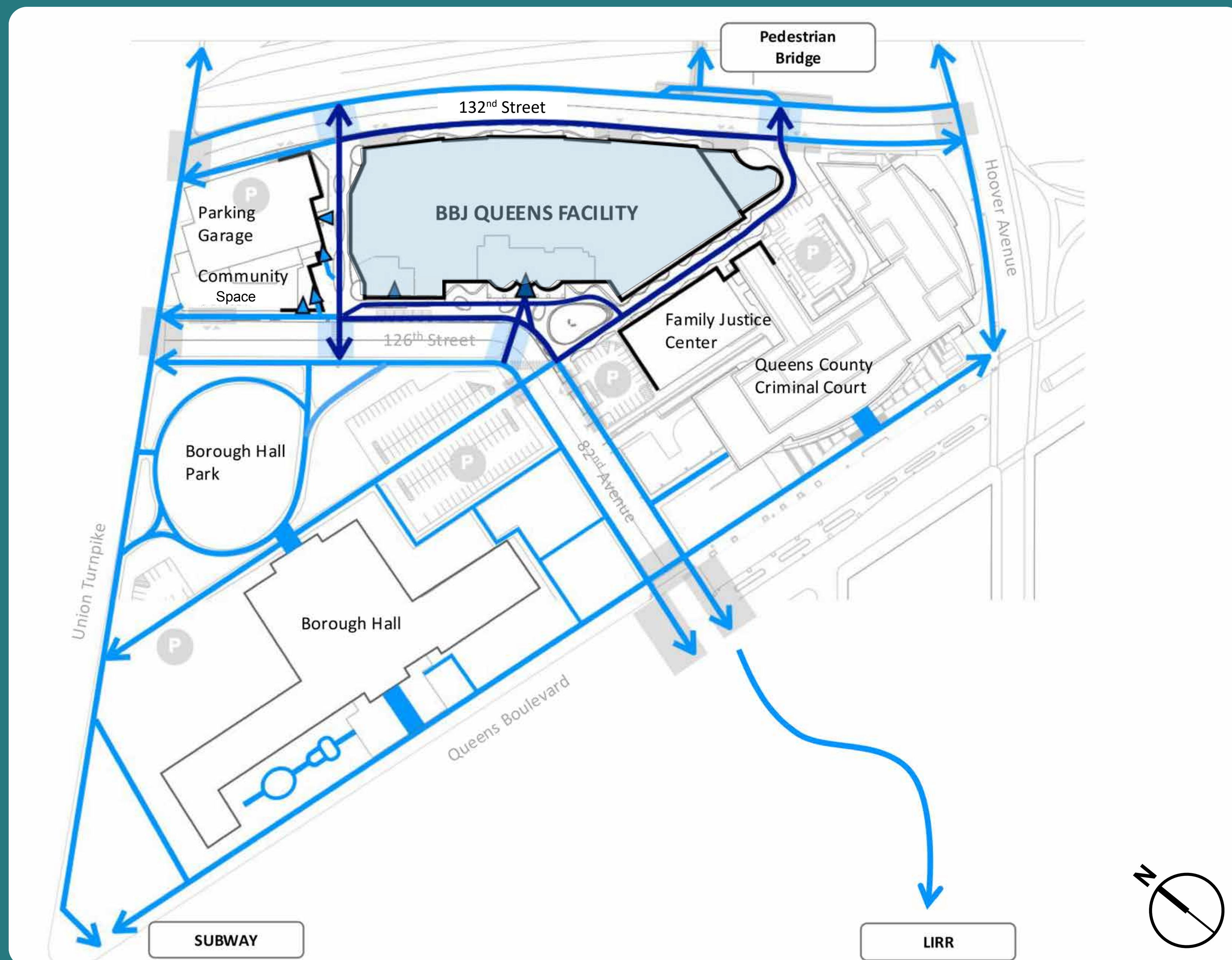
NEIGHBORHOOD CONTEXT



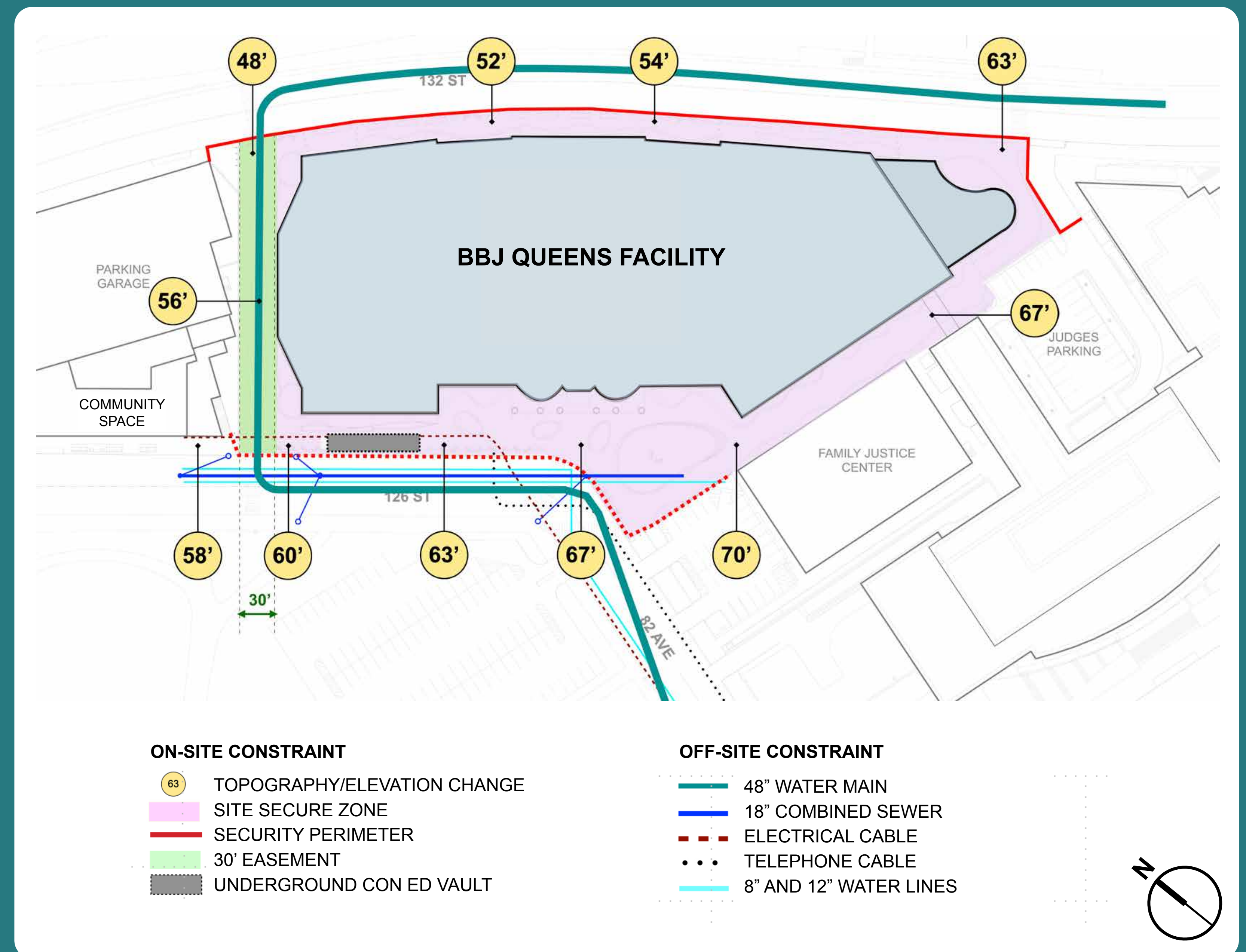
CAMPUS CONTEXT



PEDESTRIAN CIRCULATION



SITE CONSTRAINT



SITE DESIGN OBJECTIVES

Enhance
the civic
campus

Create
a cohesive
pedestrian
experience

Soften
edges with
landscape

Integrate
security with
streetscape

Emphasize
indoor/outdoor
relationship

Maximize
green
infrastructure

PUBLIC REALM

STREETSCAPE ELEMENTS



LANDSCAPE ELEMENTS



CONCEPT SITE PLAN



SITE DESIGN GOALS

Complete
the civic
campus
public realm

Extend
the
park

Connect
pedestrian
paths

PUBLIC REALM

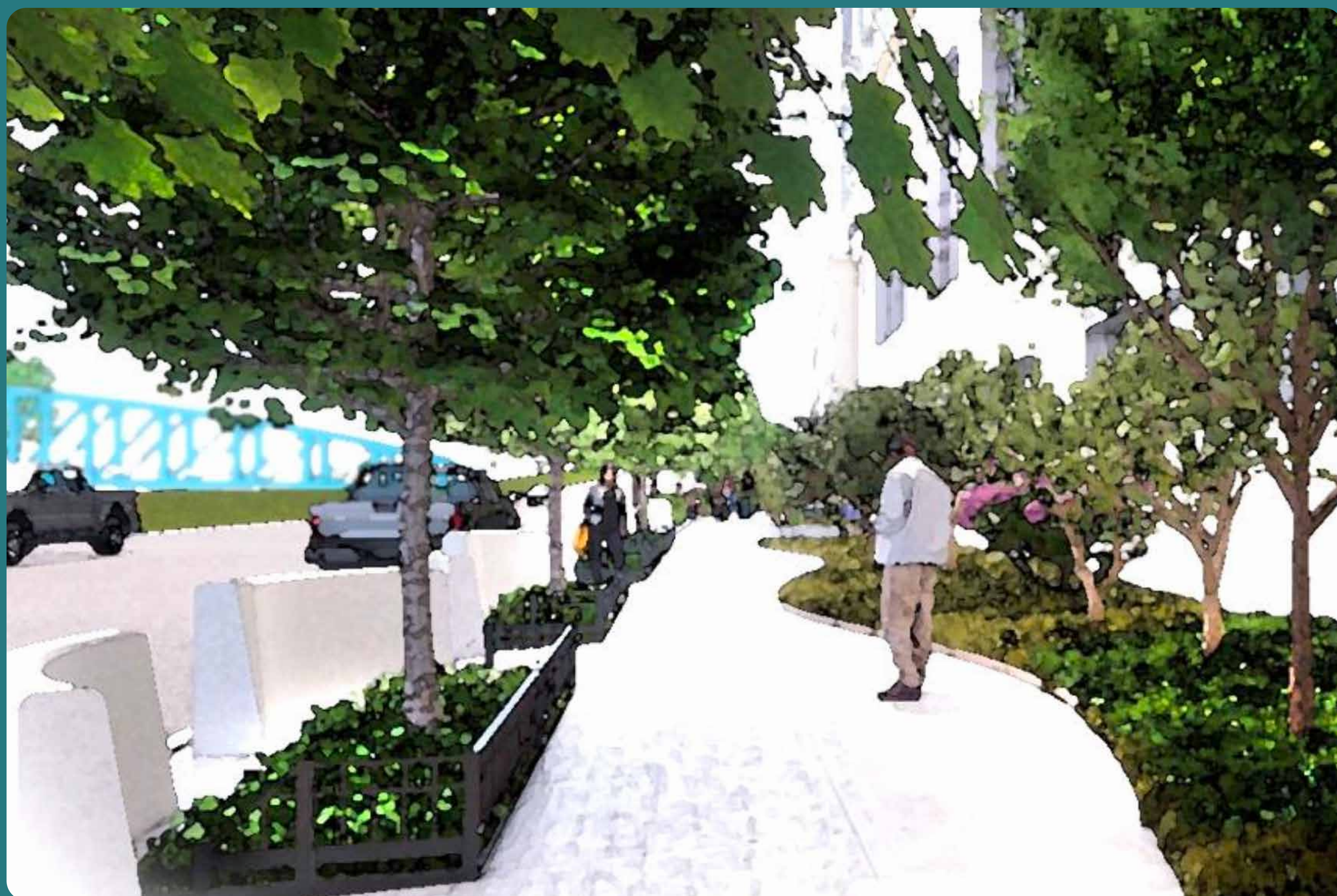
1. MAIN PLAZA



2. 126TH STREET



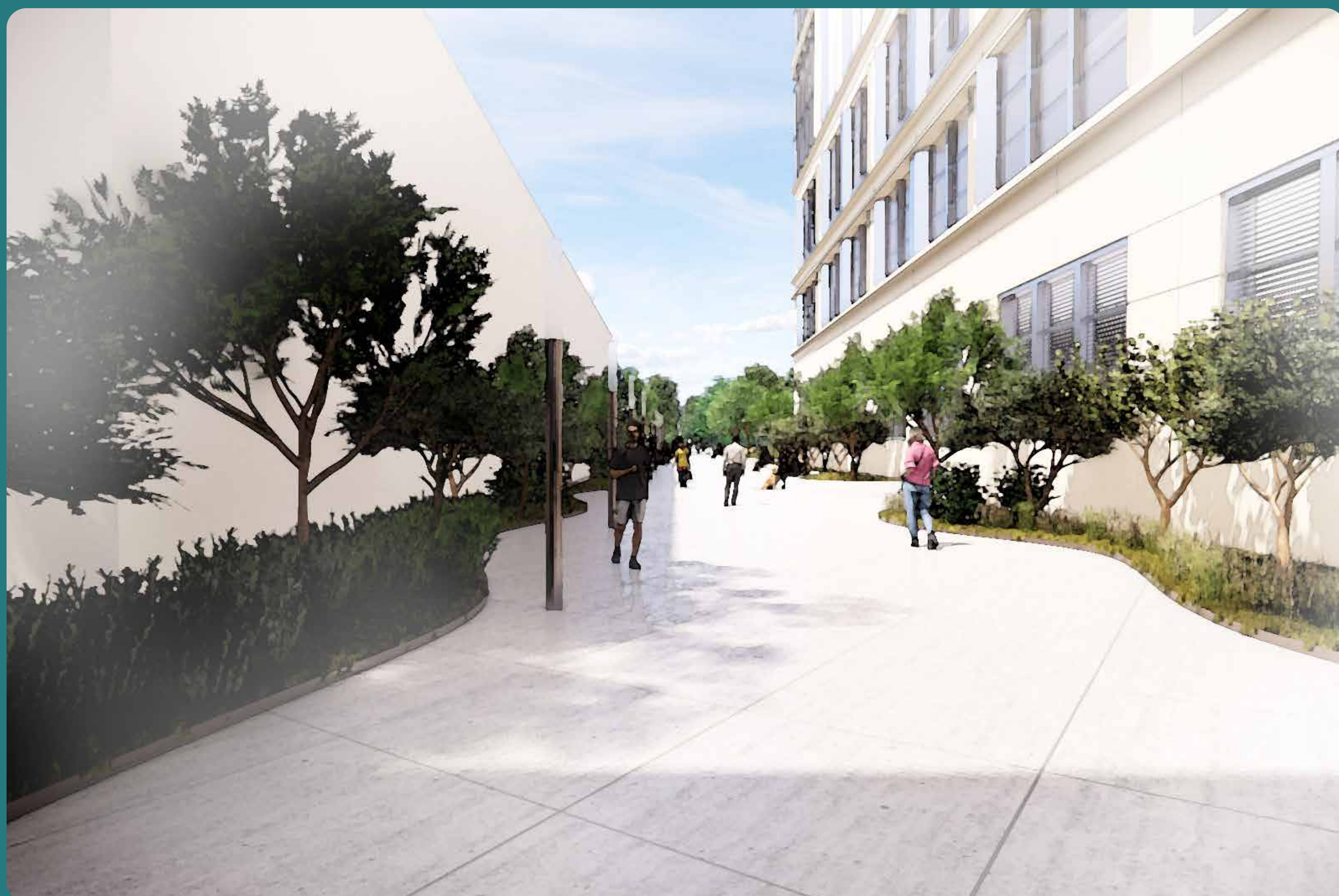
3. 132ND STREET



4. COMMUNITY PASSAGEWAY



5. COURTHOUSE PASSAGEWAY



6. MAIN PLAZA OVERVIEW



PUBLIC REALM

Q : HOW DO YOU USE THE PUBLIC SPACES ON THE CIVIC CAMPUS
AND IN WHAT WAY?

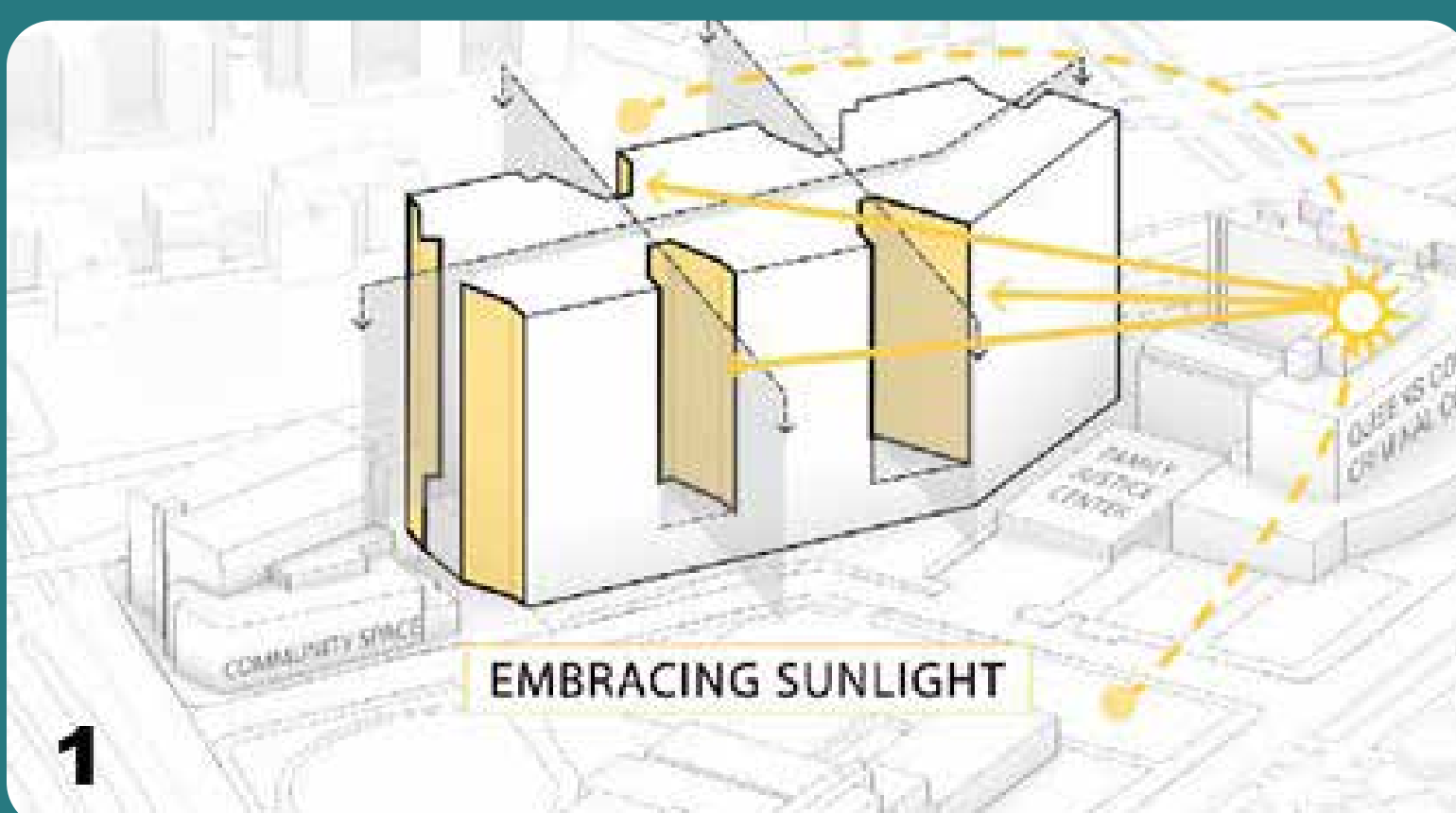
Q : WHAT WOULD HELP MAKE THE ENVIRONMENT MORE INVITING?
(FOR EXAMPLE, LANDSCAPING, SEATING, LIGHTING, ART, ETC)

BUILDING APPEARANCE

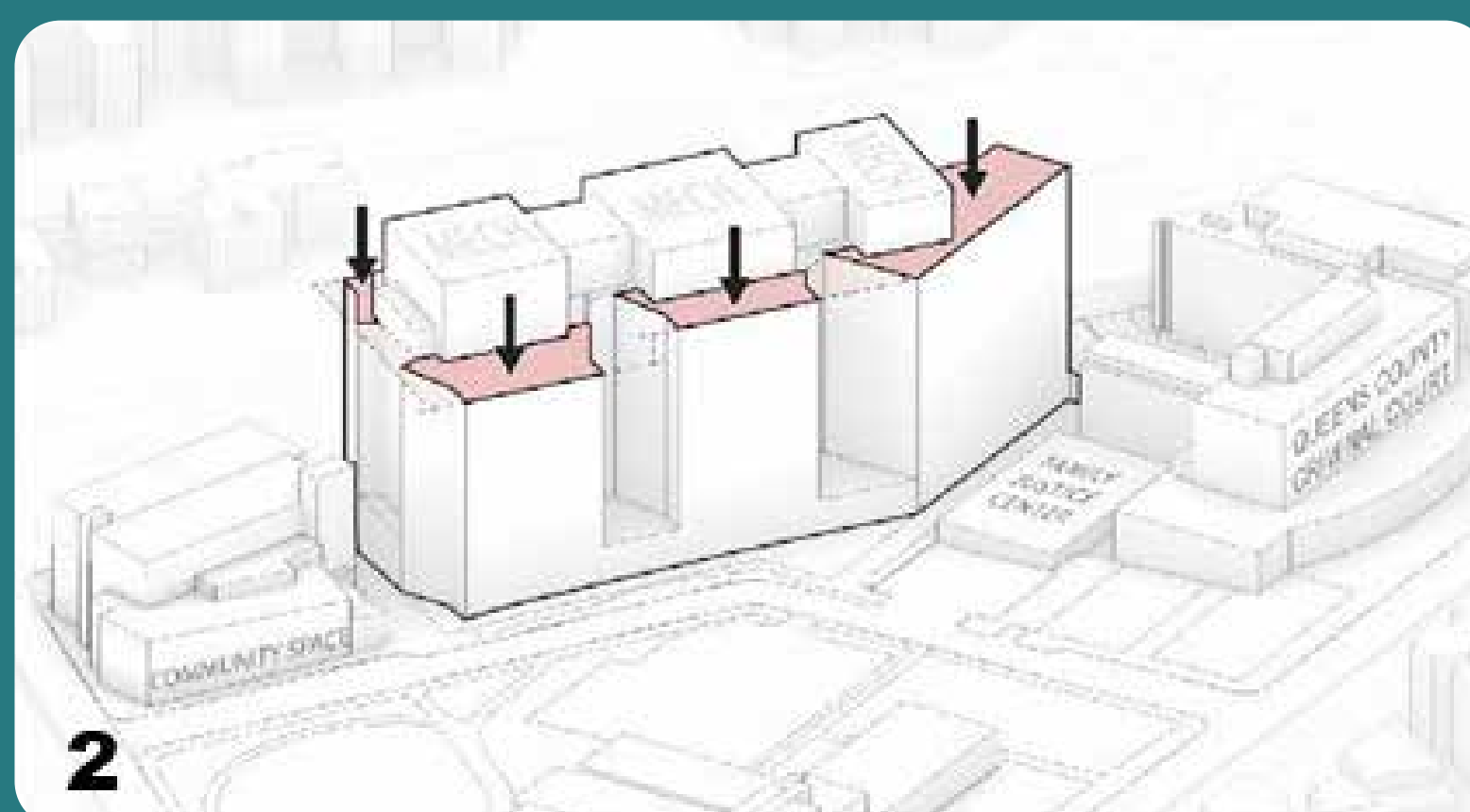
UNDERSTANDING THE URBAN CONTEXT



AREIAL VIEW FROM WEST



1 MAXIMIZE SOLAR EXPOSURE



2 REDUCE PERCEIVED BULK



3 EXTEND GREEN ROOF CONNECTIONS



4 RELATE TO ADJACENT BUILDINGS

DESIGNING FOR USERS

Queens
Borough
residents

Neighbors
within
walking
distance

Persons in
custody
and
their families

Justice
advocates

Staff

BUILDING APPEARANCE

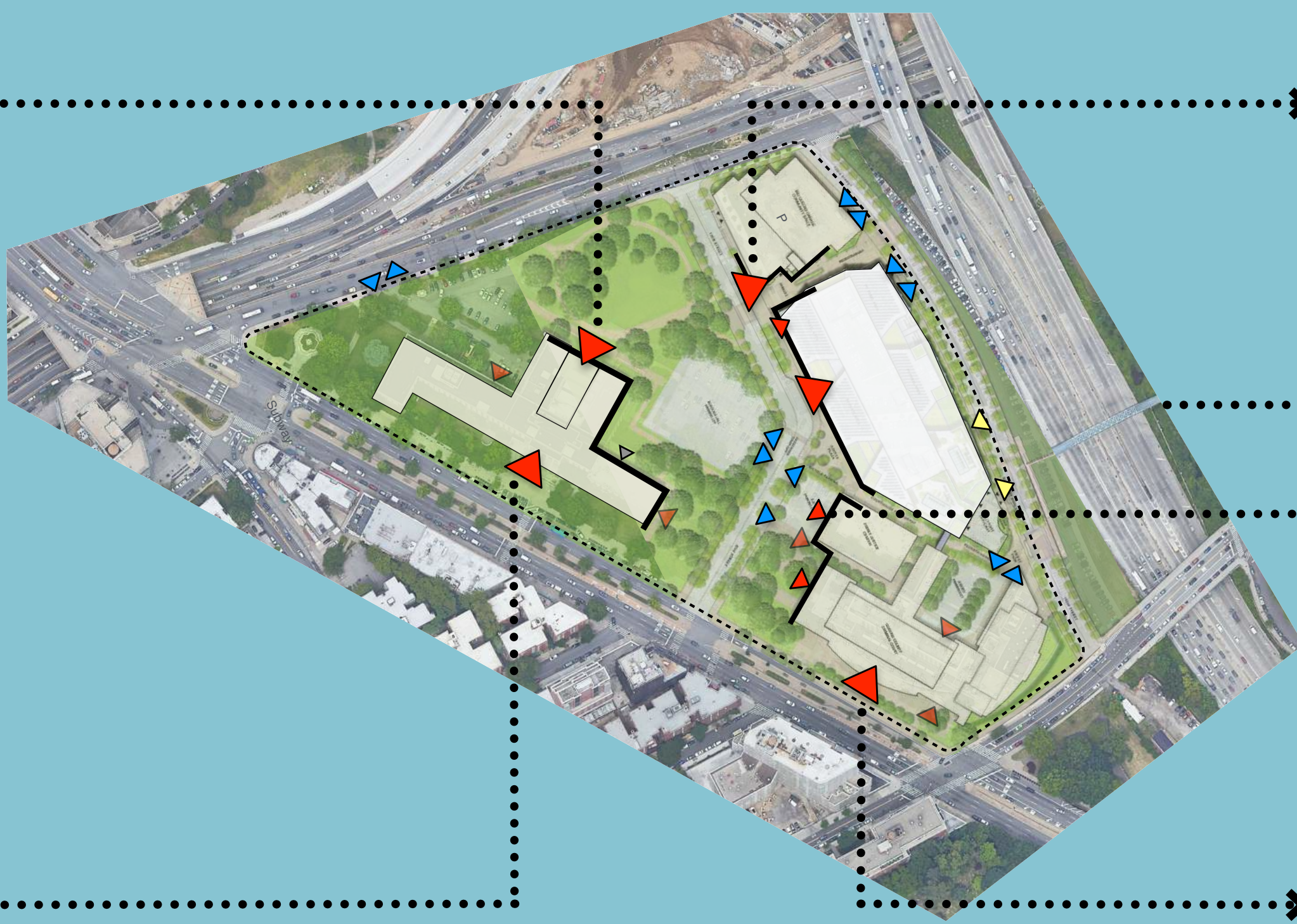
CREATING A CIVIC ASSET



BUILDING VISUALIZATION FROM INTERSECTION OF 82ND AVE AND QUEENS



QUEENS BOROUGH HALL CULTURAL CENTER



COMMUNITY SPACE MAIN ENTRANCE



BRIARWOOD PEDESTRIAN BRIDGE



QUEENS BOROUGH HALL MAIN ENTRANCE



QUEENS COUNTY CRIMINAL COURT



NYC FAMILY JUSTICE CENTER

BUILDING VISUALIZATION FROM INTERSECTION OF 82ND AVE AND QUEENS BLVD

DESIGN PRINCIPLES

Enhance
the prominence
of the civic
campus

Public
spaces to be
welcoming
and inclusive

Complement the
surrounding
campus

Create
visual interest
and exhibit
exemplary
architecture

BUILDING APPEARANCE

UNDERSTANDING THE CAMPUS CONTEXT



MAIN PLAZA VIEW



MAIN LOBBY PLAN



MAIN ENTRY VIEW

DESIGN VISION

Distinct,
highly visible,
welcoming,
and dignified
entrances

Transparent
main lobby
embraces the
park setting

New facility
complements
Queens
Borough Hall
park

New facility
shields the
park from the
Van Wyck
Expressway

Neutral
exterior palette
matches
existing
campus

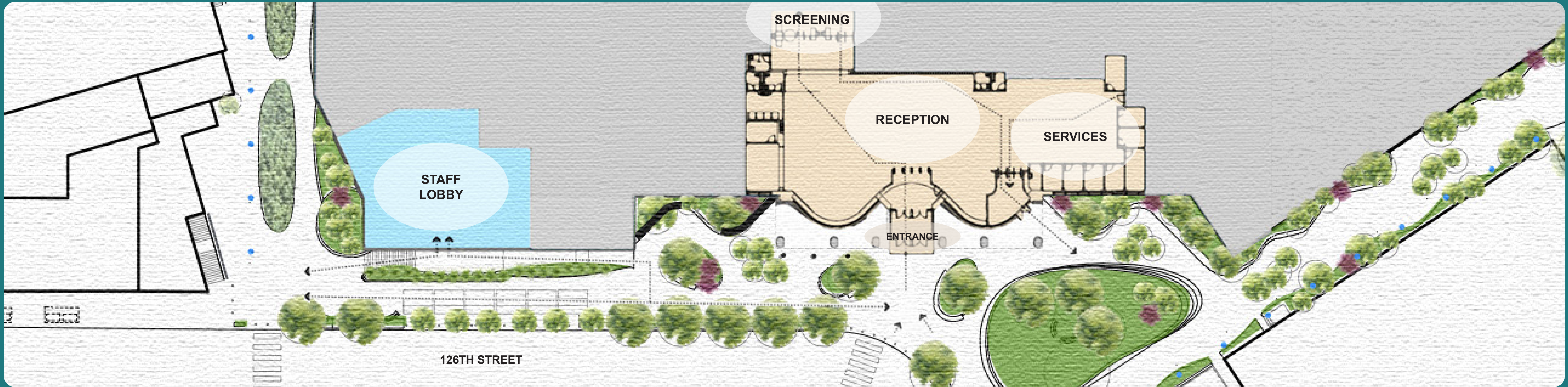
BUILDING APPEARANCE

Q : WHAT FEATURES DO YOU APPRECIATE ON THE EXISTING CAMPUS (COLORS, MATERIALS, ENTRANCES, WINDOWS, ETC)?

Q : WHAT BUILDING FEATURES WOULD HELP YOU FEEL MORE WELCOME AT THIS FACILITY (DOORS, TRANSPARENCY, LIGHTS, SIGNAGE, WINDOWS, ETC)?

INTERIOR EXPERIENCE - PUBLIC

CONNECTING COMMUNITY AND FAMILY



MAIN LOBBY PLAN



MAIN LOBBY VIEW



VISITING AREA VIEW



MAIN LOBBY VIEW

DESIGN PRINCIPLES

Dignity
and
respect

Enrich
and
inspire
people

Connection
to the
outdoor
landscape

Clear
sightlines
and
wayfinding

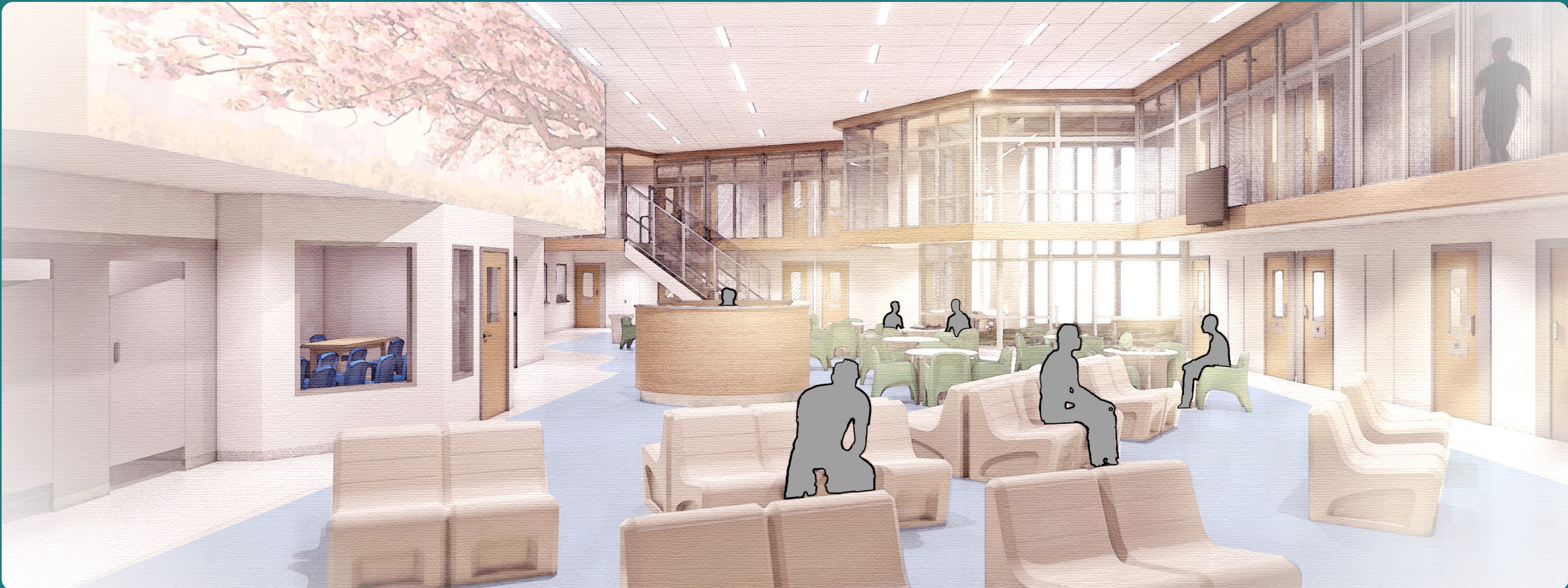
INTERIOR EXPERIENCE - PUBLIC

Q : WHAT WOULD HELP YOU FEEL COMFORTABLE INSIDE THE VISITING AREAS? (WAYFINDING, COLOR, SEATING, ETC)?

Q : WHAT WOULD HELP YOU FEEL WELCOME INSIDE THE PUBLIC LOBBY? (SEATING, COLOR, LIGHTING, ART, ETC)?

INTERIOR EXPERIENCE - SECURE

NORMATIVE, HUMANE ENVIRONMENTS



TYPICAL HOUSING UNIT DAYROOM SPACE VIEW



TYPICAL RECREATION SPACE VIEW



TYPICAL CELL VIEW

DESIGN GOALS

Design spaces full of natural light and views to nature

Provide spaces for convenient access to programs and activities

Facilitate access to medical / mental health treatment

Shape outdoor spaces to maximize daylight, views and fresh air

Configure normalized, rehabilitative environments

INTERIOR EXPERIENCE - SECURE

Q : HOW CAN THE DESIGN PROVIDE A CALM AND SAFE ENVIRONMENT FOR PEOPLE IN CUSTODY?

Q : HOW CAN THE DESIGN PROVIDE A CALM AND SAFE ENVIRONMENT FOR STAFF AND SERVICE PROVIDERS?