

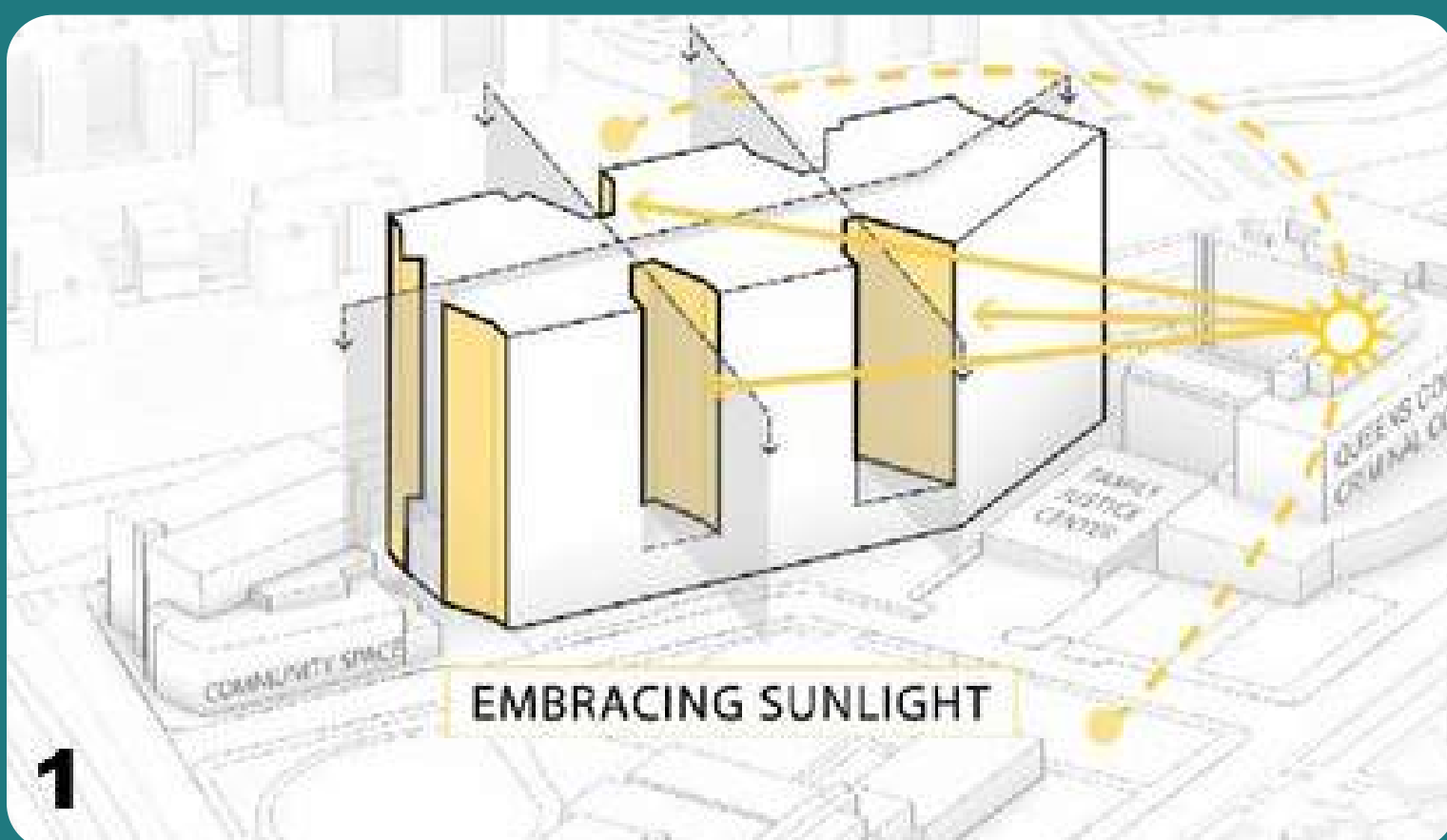
BUILDING APPEARANCE

UNDERSTANDING THE URBAN CONTEXT

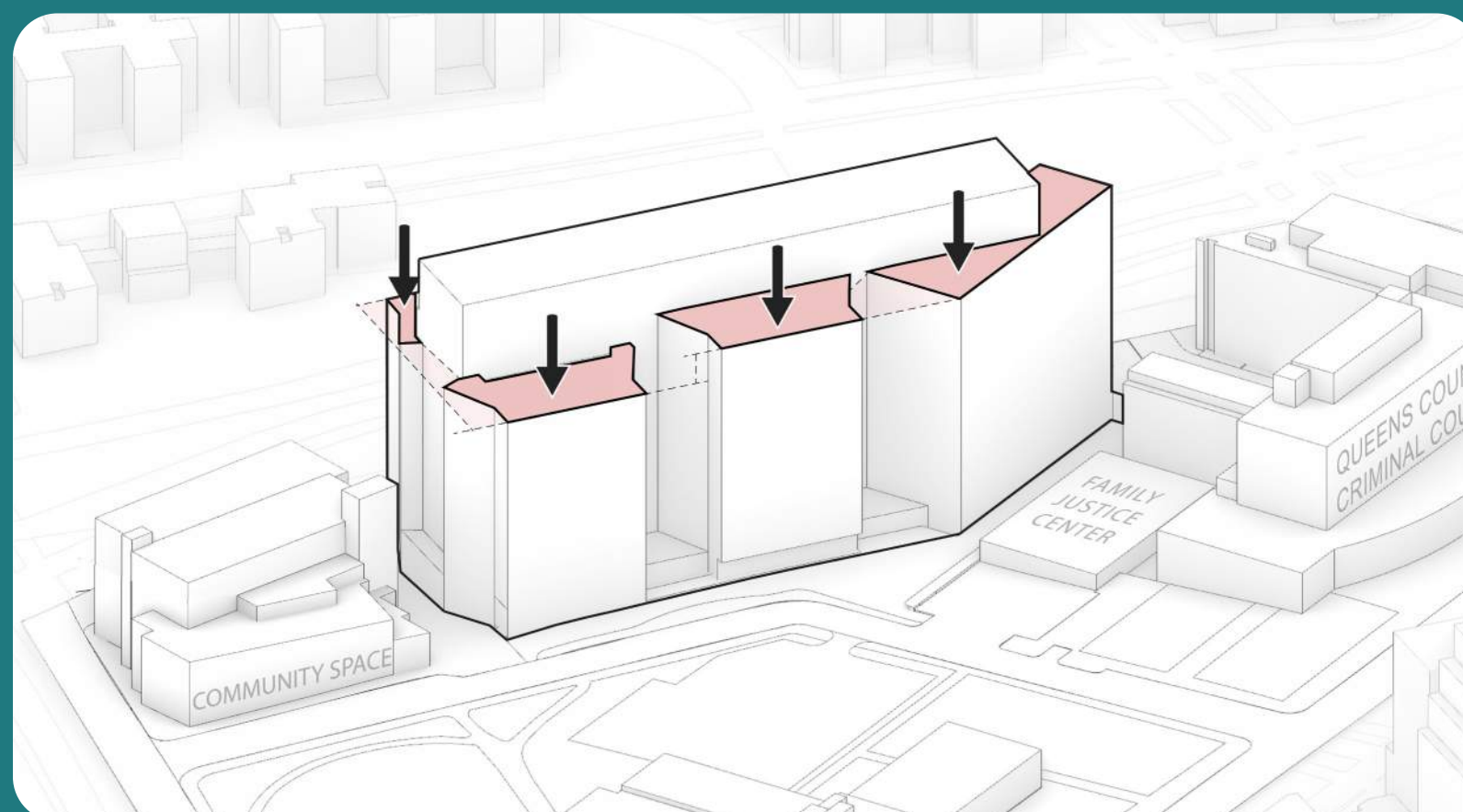
Contrasting background material reduces the visual building mass



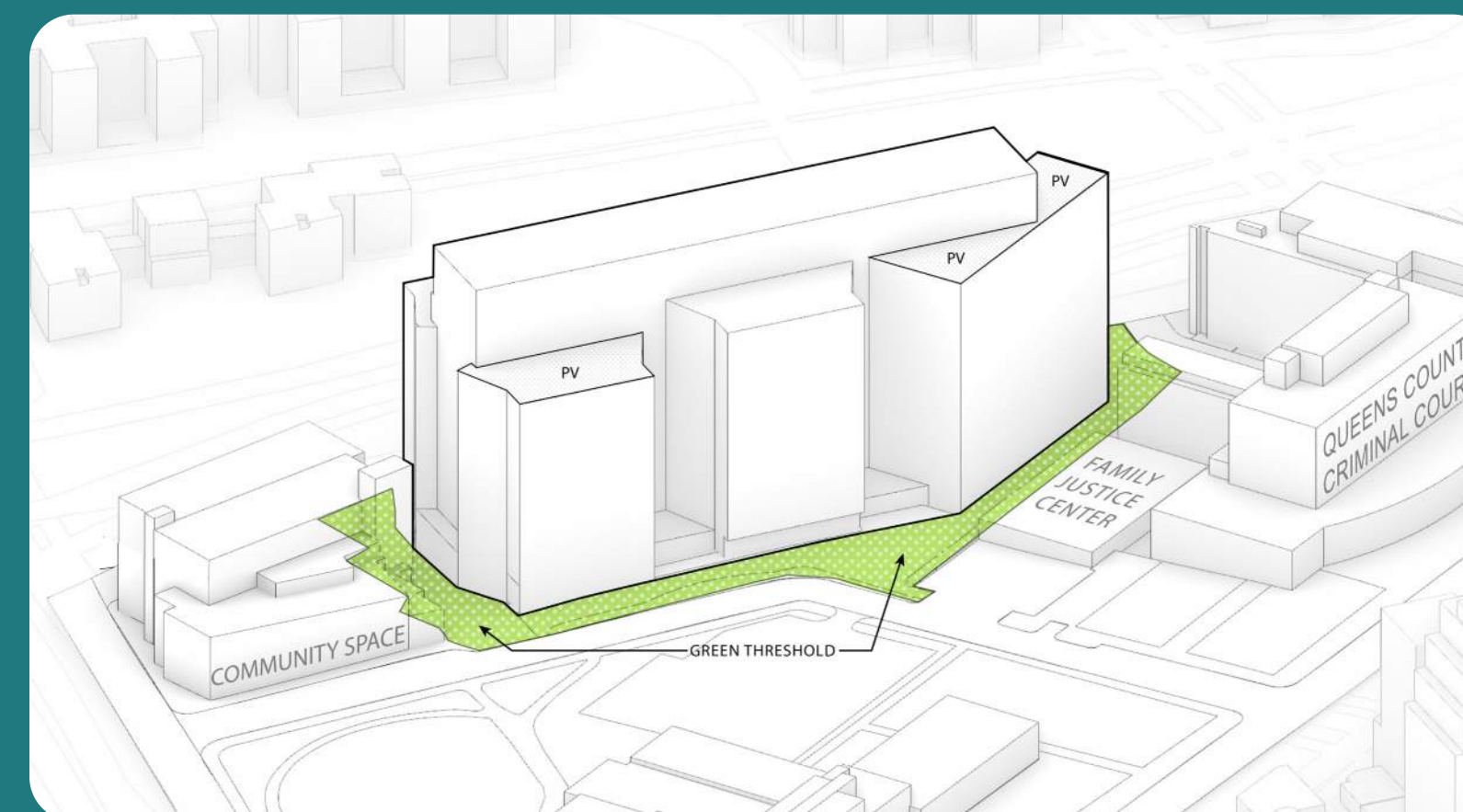
AERIAL VIEW FROM WEST



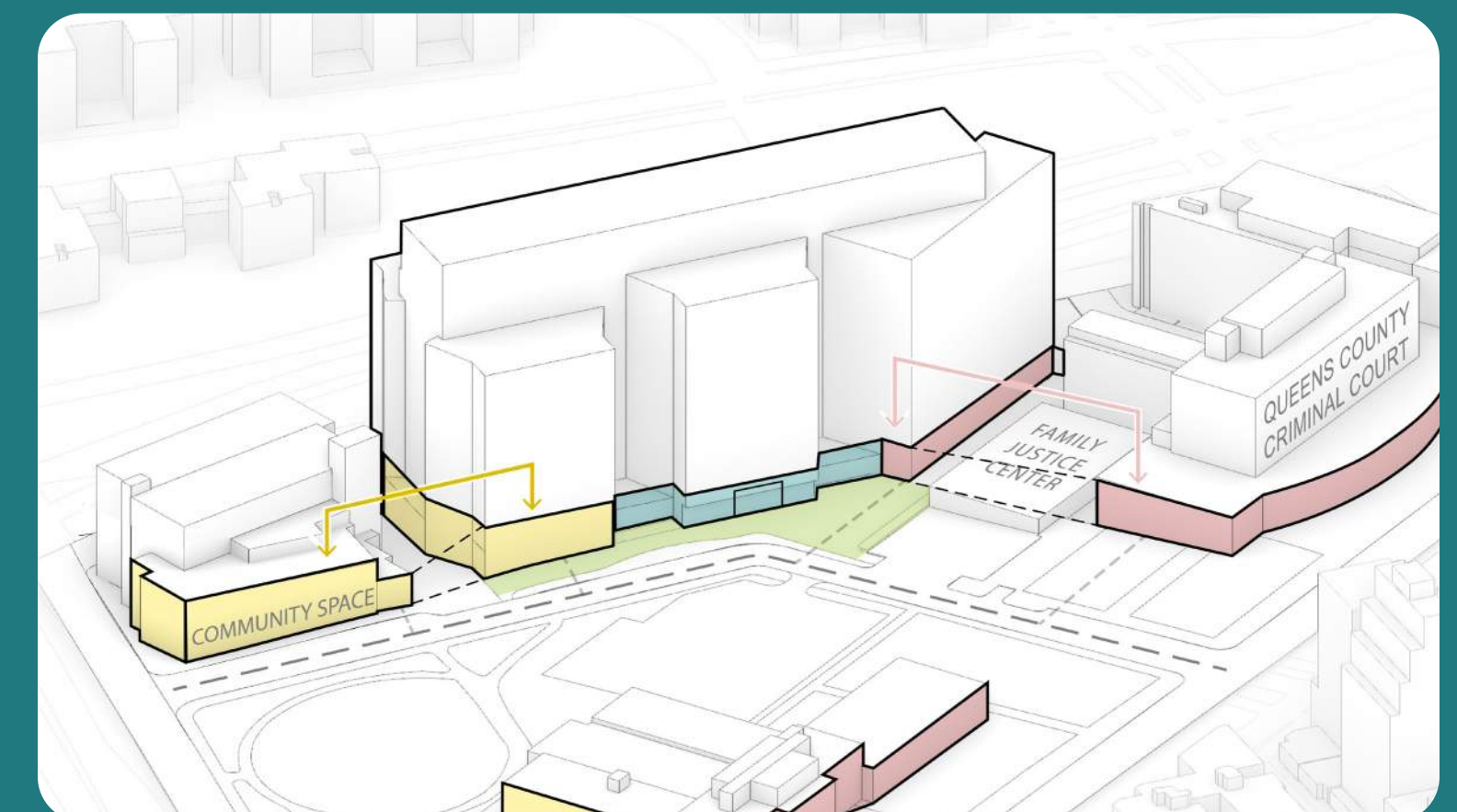
1 MAXIMIZE SOLAR EXPOSURE



REDUCE PERCEIVED BULK



EXTEND GREEN ROOF CONNECTIONS



RELATE TO ADJACENT BUILDINGS

KEY COMMUNITY ENGAGEMENT TAKEAWAYS

- Provide more **information** regarding **proposed building size and configuration in relationship** to the nearby residential towers
- Need to **balance openness** for people in custody while **maintaining privacy for neighboring residents**, especially concerning the outdoor recreation spaces
- Strong **support for a design** focused on **daylight** access and a **welcoming, transparent, and campus-integrated aesthetic**

BUILDING APPEARANCE

CREATING A CIVIC ASSET

Contrasting background material reduces the visual building mass



EXISTING CAMPUS VIEWS



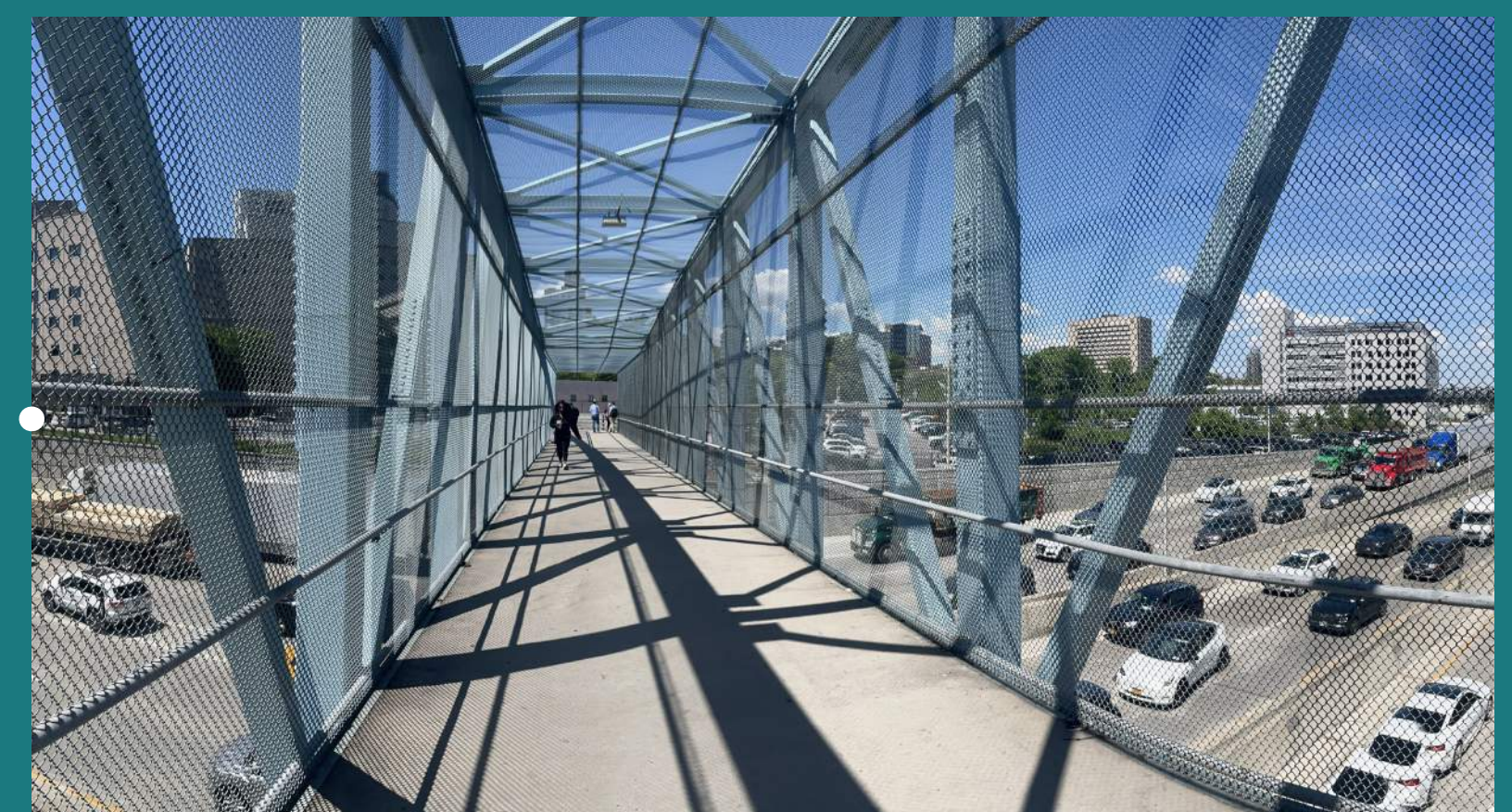
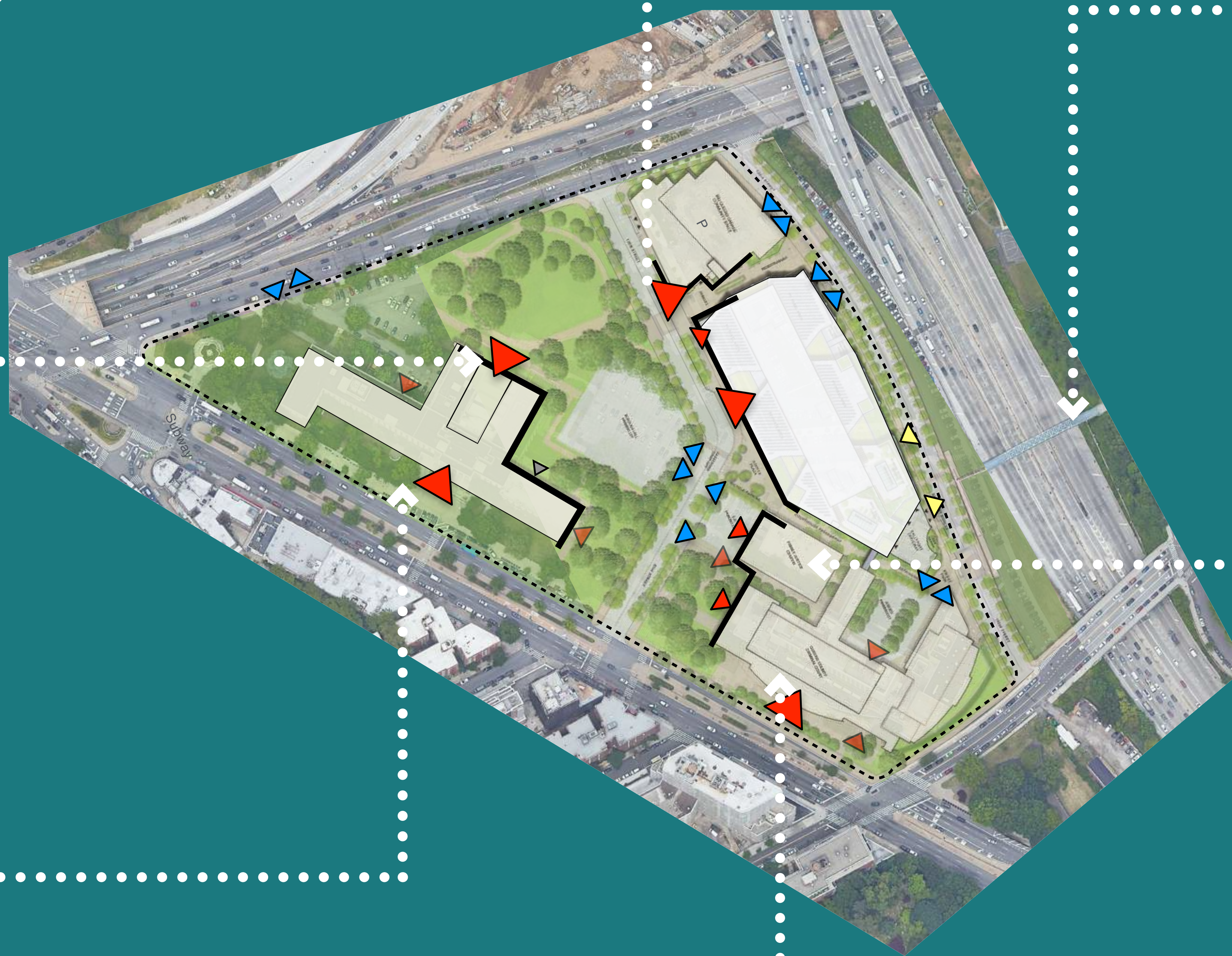
COMMUNITY SPACE MAIN ENTRANCE



QUEENS BOROUGH HALL CULTURAL CENTER ENTRANCE



QUEENS BOROUGH HALL MAIN ENTRANCE



BRIARWOOD PEDESTRIAN BRIDGE



FAMILY JUSTICE CENTER



QUEENS COUNTY CRIMINAL COURT

BUILDING APPEARANCE

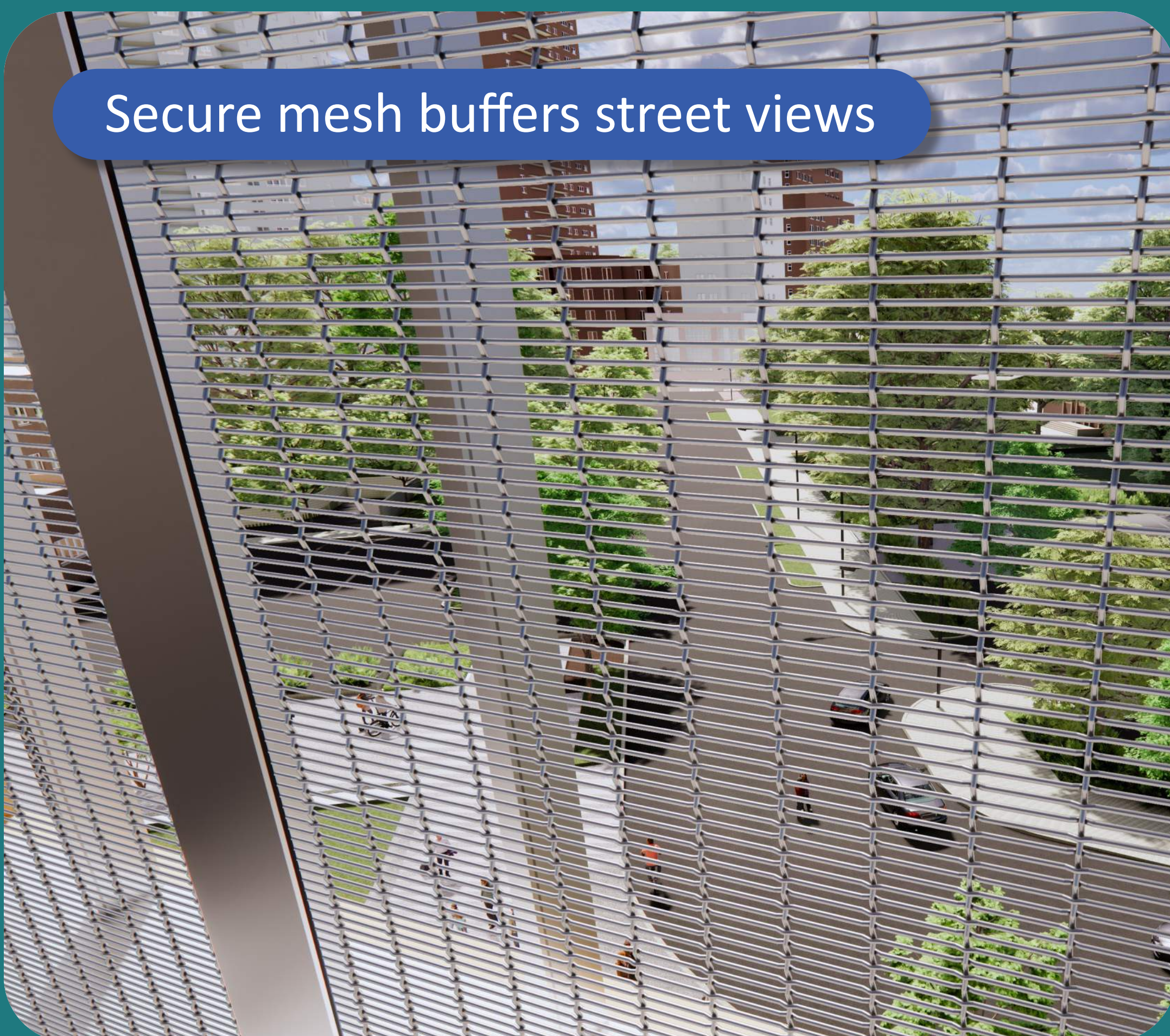
EXTEND THE GREEN

Entrance is set back from street, trees help block view



MAIN PLAZA VIEW

Secure mesh buffers street views

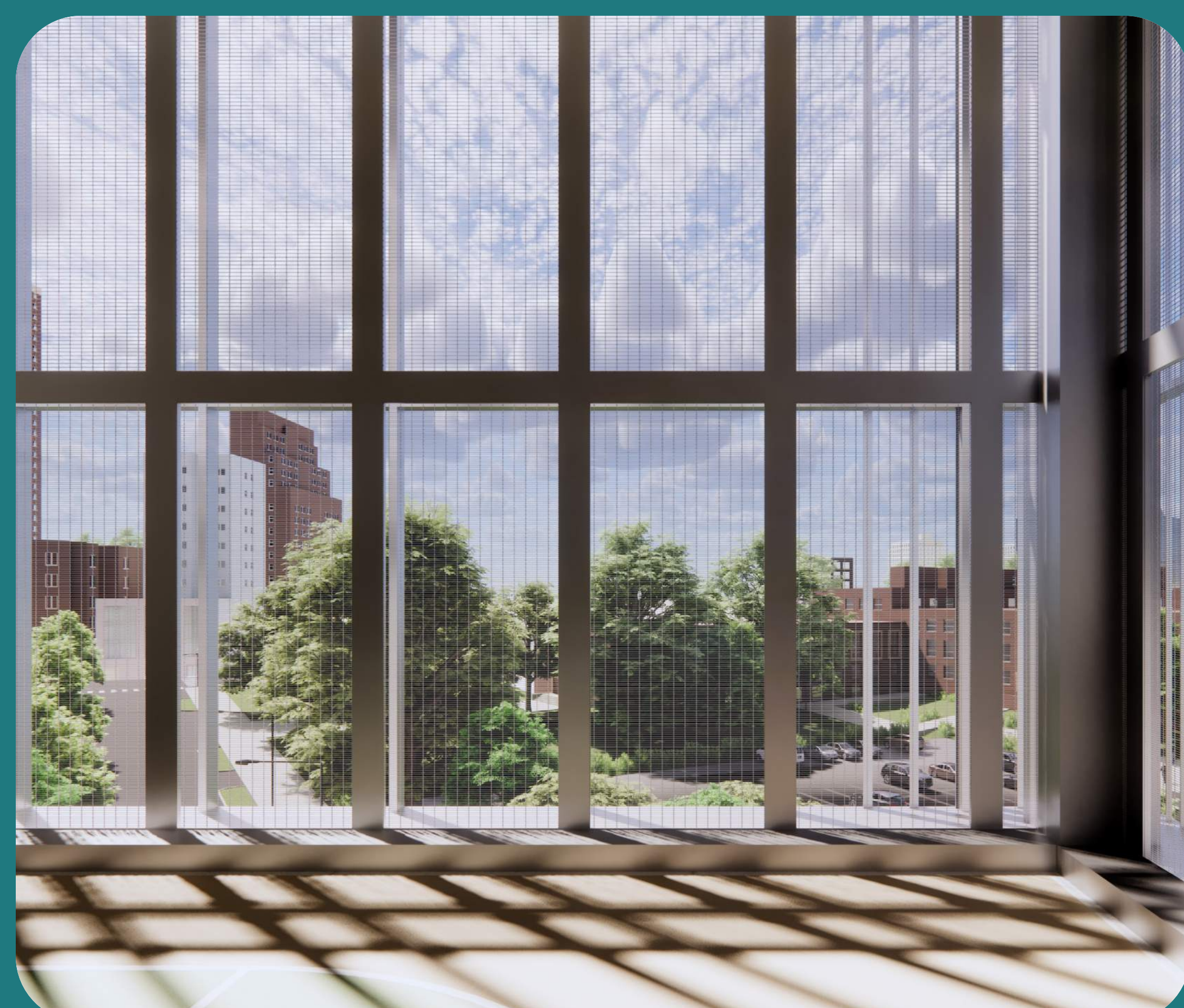


VIEW FROM 4TH FLR OUTDOOR REC SPACE

Easy to find double-height main entrance



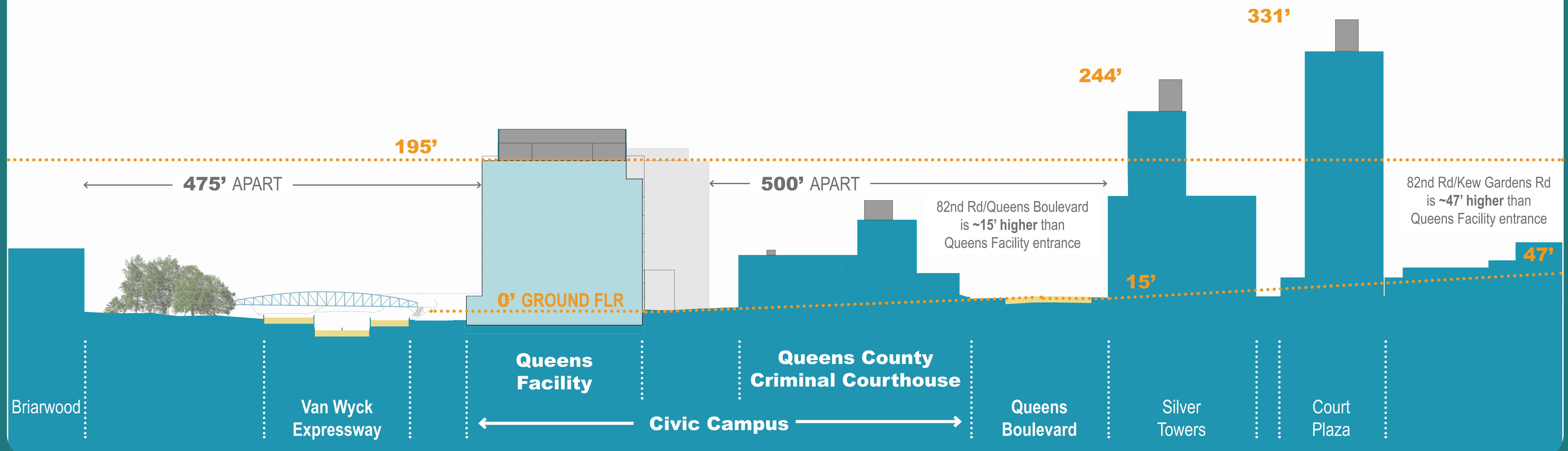
MAIN ENTRANCE VIEW



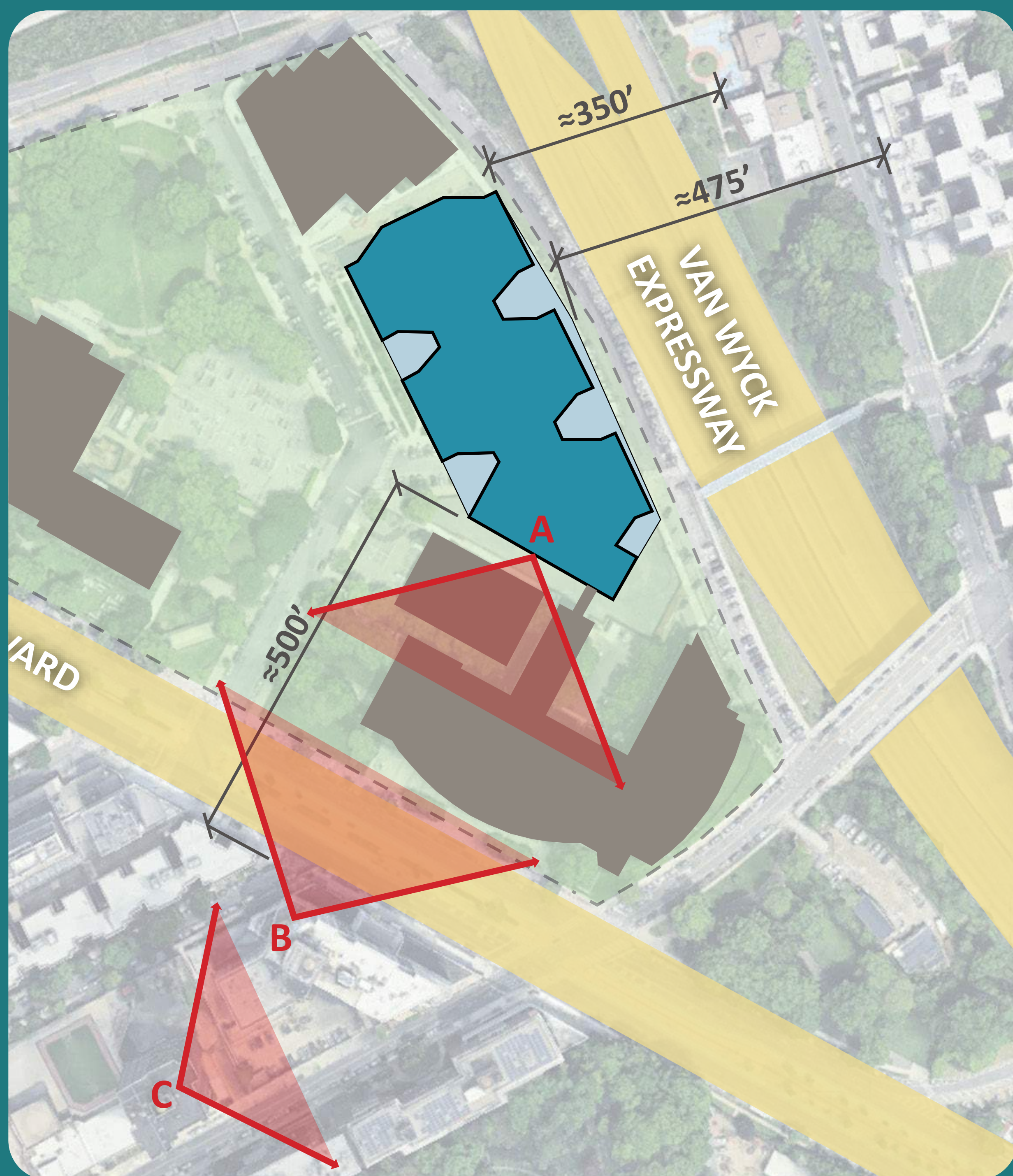
VIEW FROM 4TH FLR OUTDOOR REC SPACE

BUILDING APPEARANCE

INVESTIGATING OPENNESS VS PRIVACY



DISTANCES TO NEIGHBORS



DISTANCES TO NEIGHBORS

The new facility is not the tallest building in the neighborhood

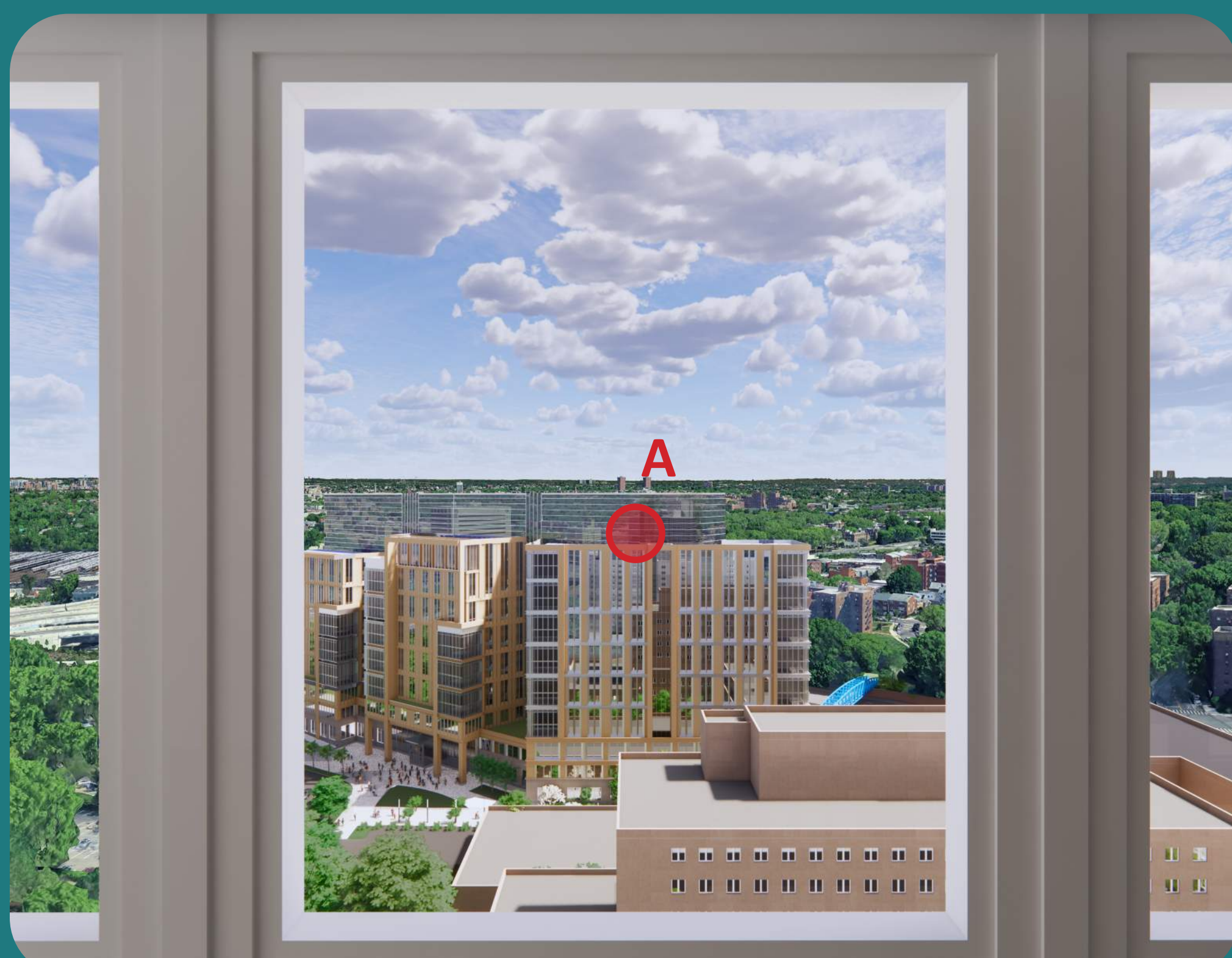
Queens facility buffers sound between Van Wyck Expressway and Queens Boulevard

Sound and visual clarity decrease with distance

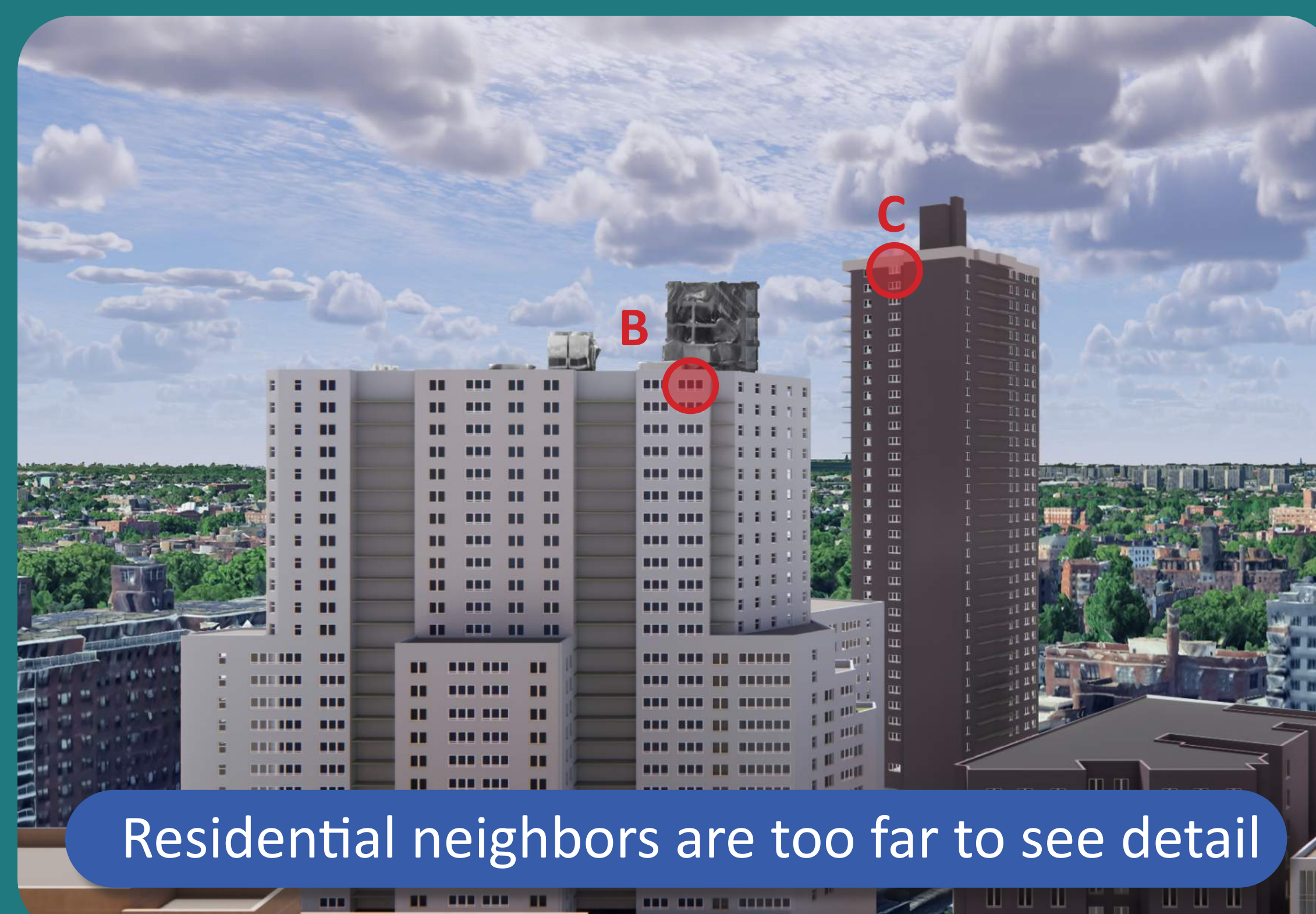


EXISTING TRAFFIC SOUND BUFFER

NEIGHBORS' VIEW



VIEW B - TOP FLOOR, SILVER TOWERS



VIEW A - ROOF LEVEL, BBJ-Q



VIEW C - TOP FLOOR, COURT PLAZA

BUILDING APPEARANCE

Q : WHAT ARCHITECTURAL FEATURES OF THE CIVIC CAMPUS WOULD YOU LIKE TO SEE REFLECTED IN THE NEW FACILITY (COLORS, MATERIALS, ETC)?

Q : WHAT DESIGN ELEMENTS WOULD HELP MAKE THE ENTRYWAYS MORE INVITING (SCREENS, LIGHTS, ETC)?

PUBLIC REALM

WHAT THE PUBLIC REALM PROVIDES



STREETSCAPE ELEMENTS

LANDSCAPE ELEMENTS



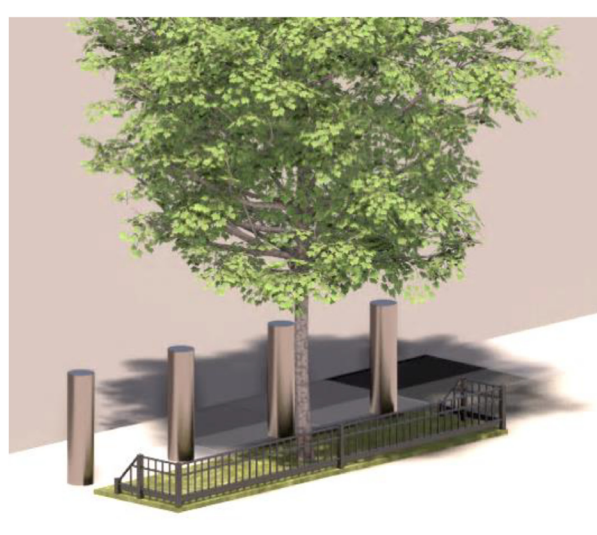
Crash-rated curved low wall with seat



Planter-mounted seat



Alternating street tree in crash-rated planter and bollards



Rain garden, street tree and bollards



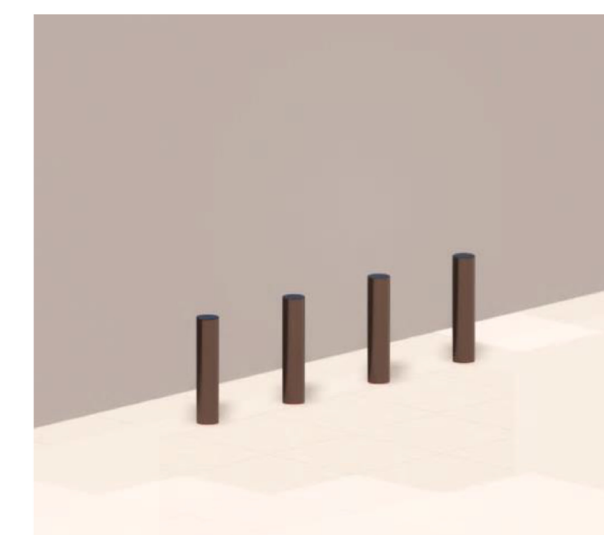
Crash-rated curved low wall



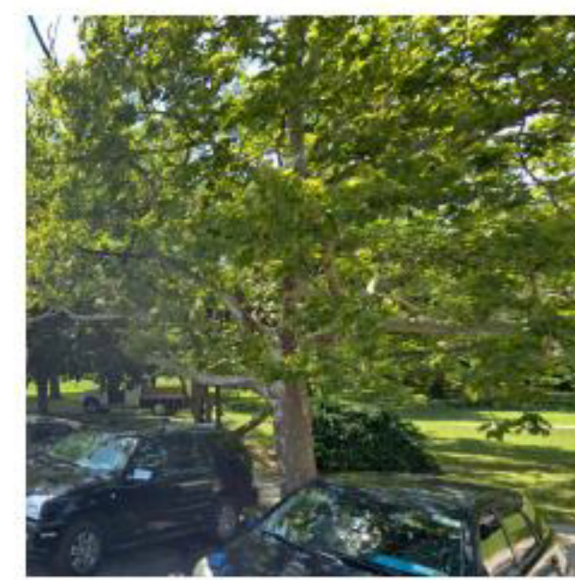
Crash-rated low wall



Crash-rated planter



Bollards (where necessary)



Street tree: London Planetree
Platanus x acerifolia
(Photo taken at Boro Hall Park)



Street tree: Pin Oak
Quercus palustris
(Photo taken at Briarwood)



Ornamental tree: Eastern Redbud
Cercis canadensis



Ornamental tree: Kousa Dogwood
Cornus kousa



Screening tree: European Hornbeam
Carpinus betulus "Fastigiata"



Underplanting: Inkberry
Ilex glabra



Underplanting: Swamp milkweed
Asclepias incarnata



Underplanting: Switchgrass
Panicum virgatum



Underplanting: Wild Indigo
Baptista tinctoria

KEY COMMUNITY ENGAGEMENT TAKEAWAYS

- Consider **pedestrian views** at the street-level, **amplify greenery**
- Incorporate **seasonal plantings** to create beautiful environment year-round
- Provide **shaded seating** areas for **rest and relaxation**
- Prioritize site development to **serve the community** and **enhance the campus appeal**

PUBLIC REALM

1. MAIN PLAZA



2. 126TH STREET



PUBLIC REALM

3. COMMUNITY PASSAGEWAY (AT 126TH)



4. COMMUNITY PASSAGEWAY (AT 132ND)



PUBLIC REALM

5. COURTHOUSE PASSAGEWAY



6. 132ND STREET



PUBLIC REALM

Q : HOW DO YOU IMAGINE AN IDEAL STREETScape AND PLAZA IN THIS NEIGHBORHOOD?

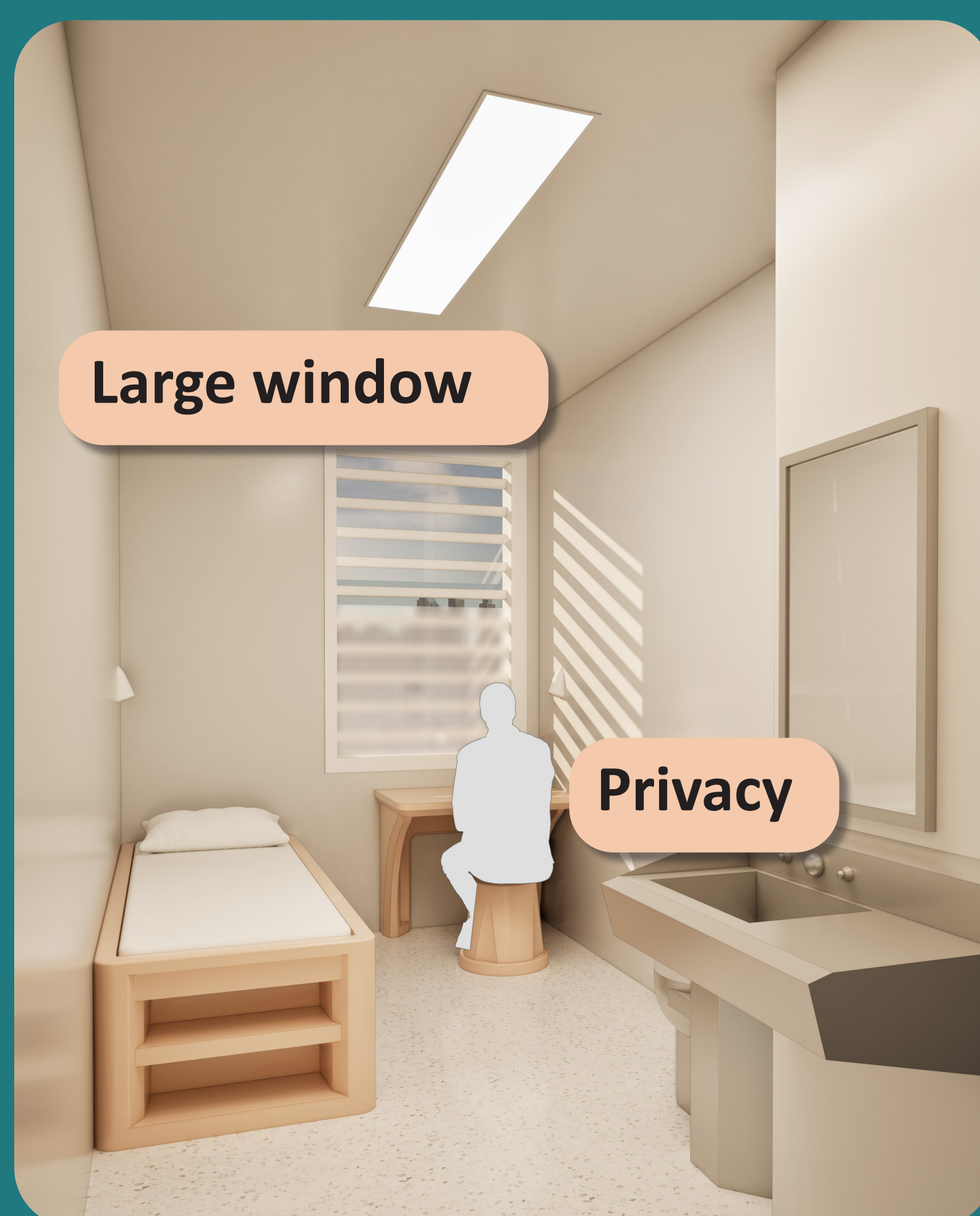
Q : WHAT ELEMENTS WOULD GENERATE A SENSE OF COMMUNITY IN THE PUBLIC SPACES? (FOR EXAMPLE: GATHERING SPACES, ART)

INTERIOR EXPERIENCE - SECURE

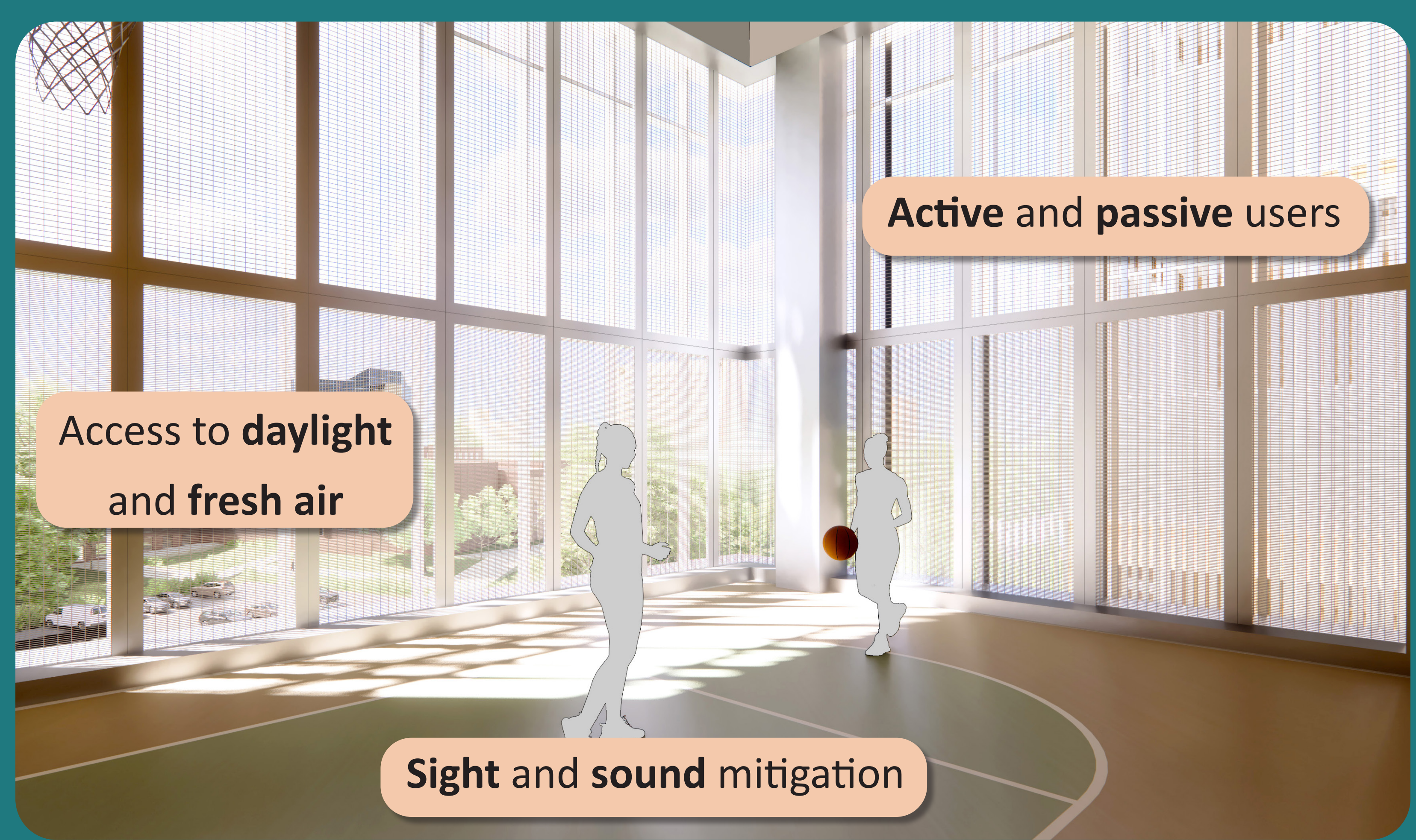
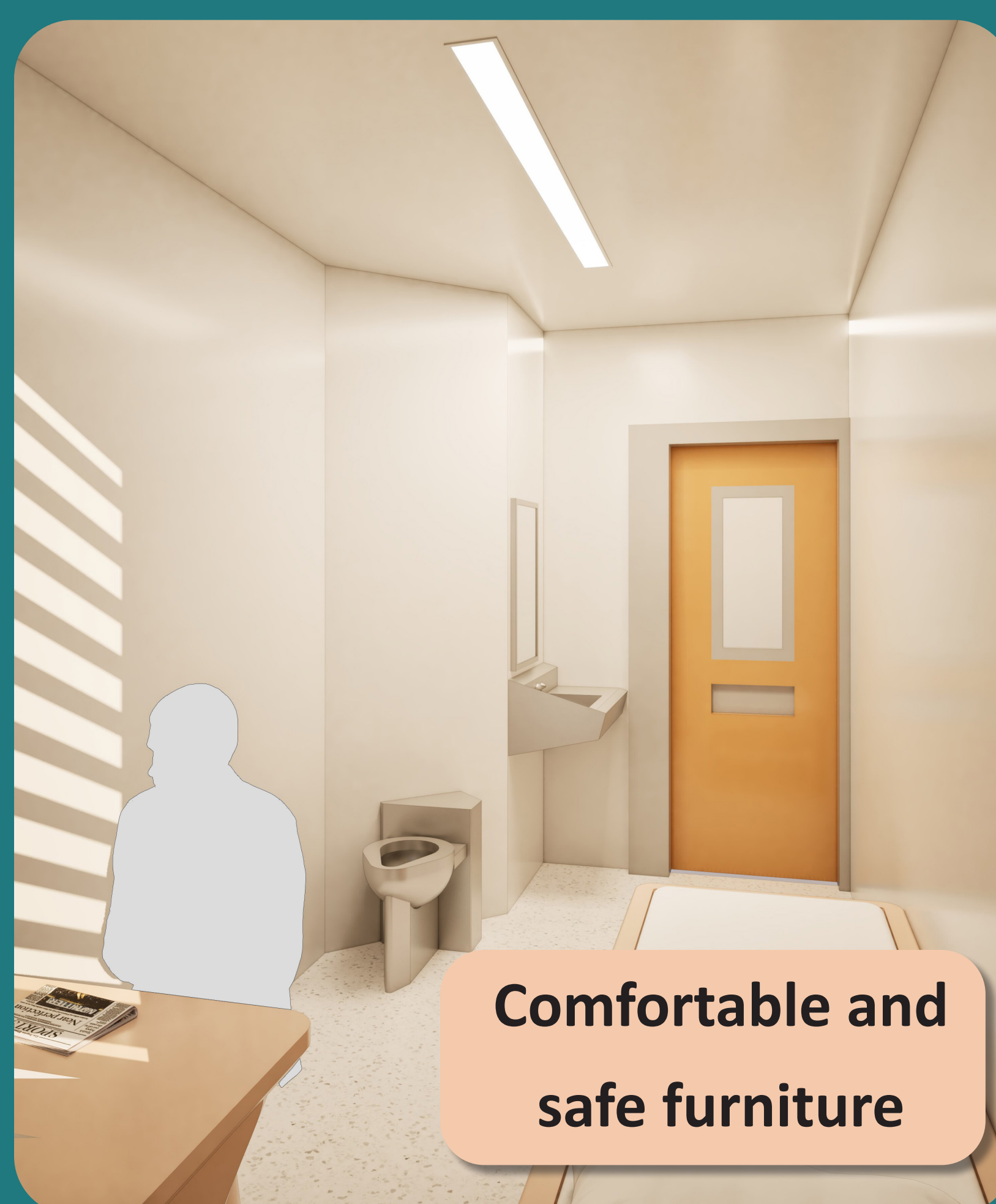
NORMATIVE, HUMANE ENVIRONMENTS



TYPICAL HOUSING UNIT DAYROOM SPACE VIEW



TYPICAL CELL VIEW



TYPICAL OUTDOOR RECREATION SPACE VIEW

KEY COMMUNITY ENGAGEMENT TAKEAWAYS

- Provide **comfortable, non-institutional conditions**, including **color/graphics**, **privacy** in multi-purpose rooms, access to **daylight**, and **safe environments**
- Ensure **sufficient space for indoor and outdoor recreation** activities while considering privacy concerns in recreation areas
- Prioritize **medical care** and **therapeutic spaces** for all genders, such as private therapy rooms and counseling areas

INTERIOR EXPERIENCE - SECURE

THERAPEUTIC HOUSING UNIT DAYROOM SPACE VIEW



NURSERY



MATERNITY

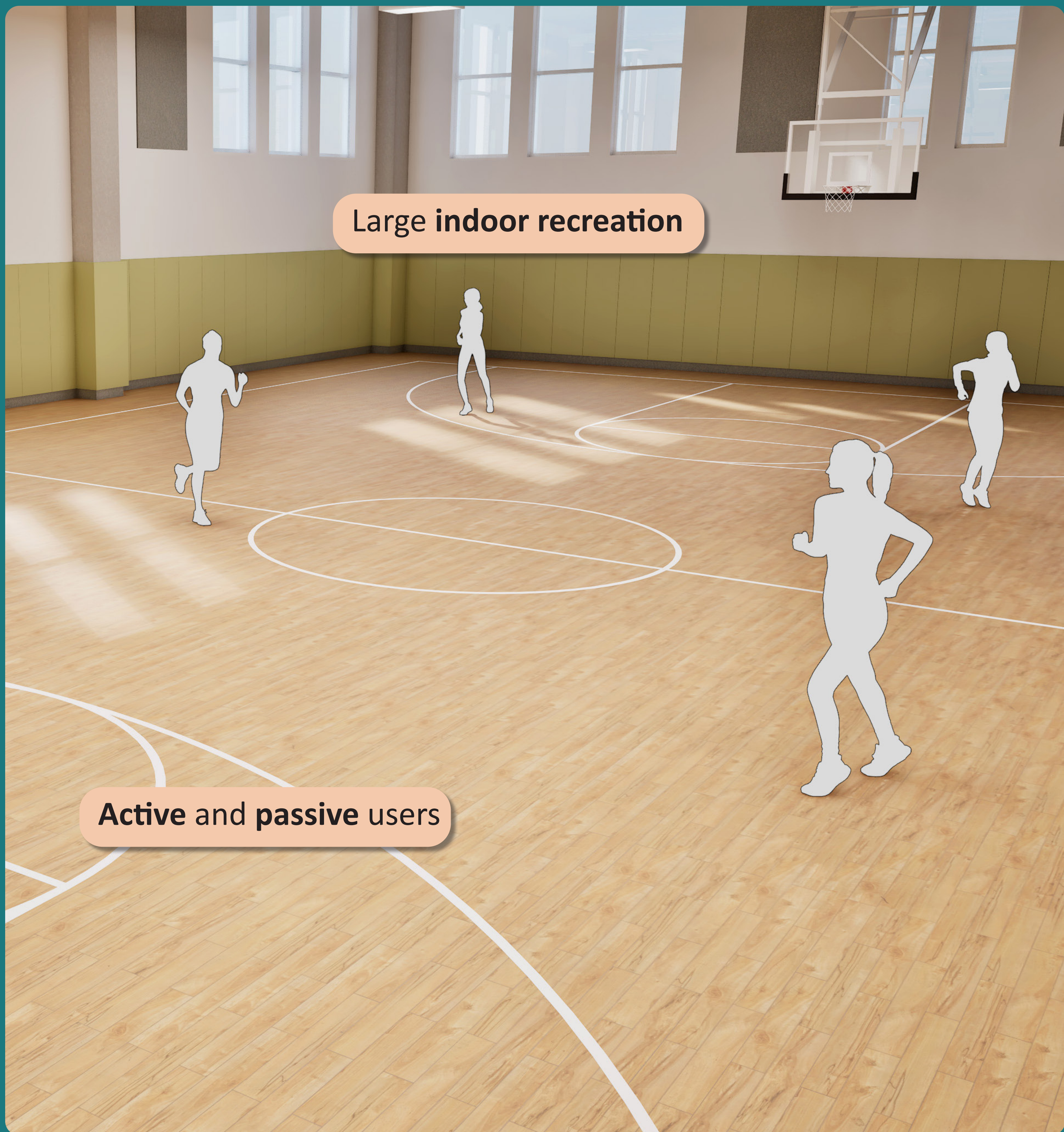


INTERIOR EXPERIENCE - SECURE

WOMENS LAW LIBRARY



GYMNASIUM



HORTICULTURE



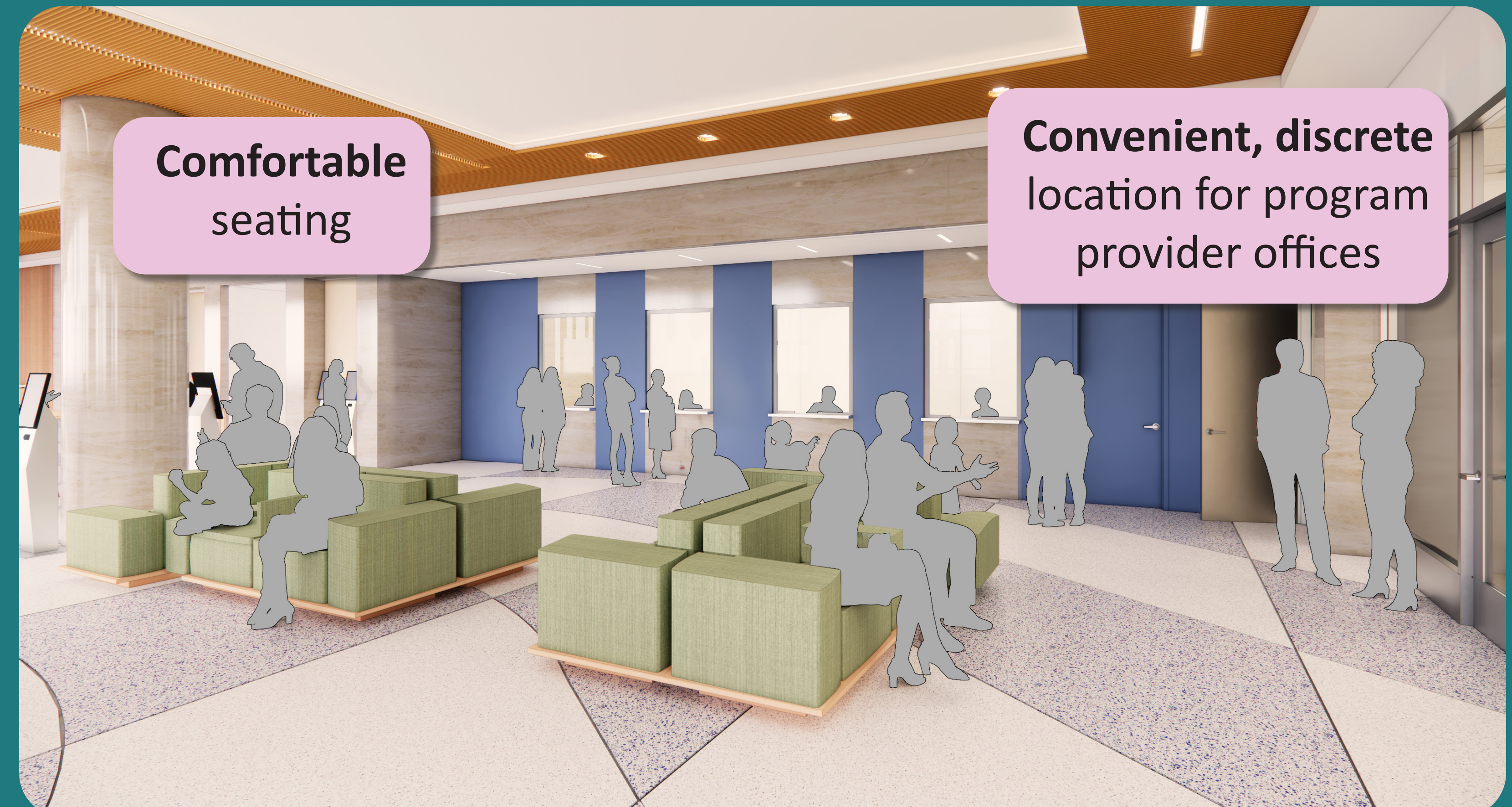
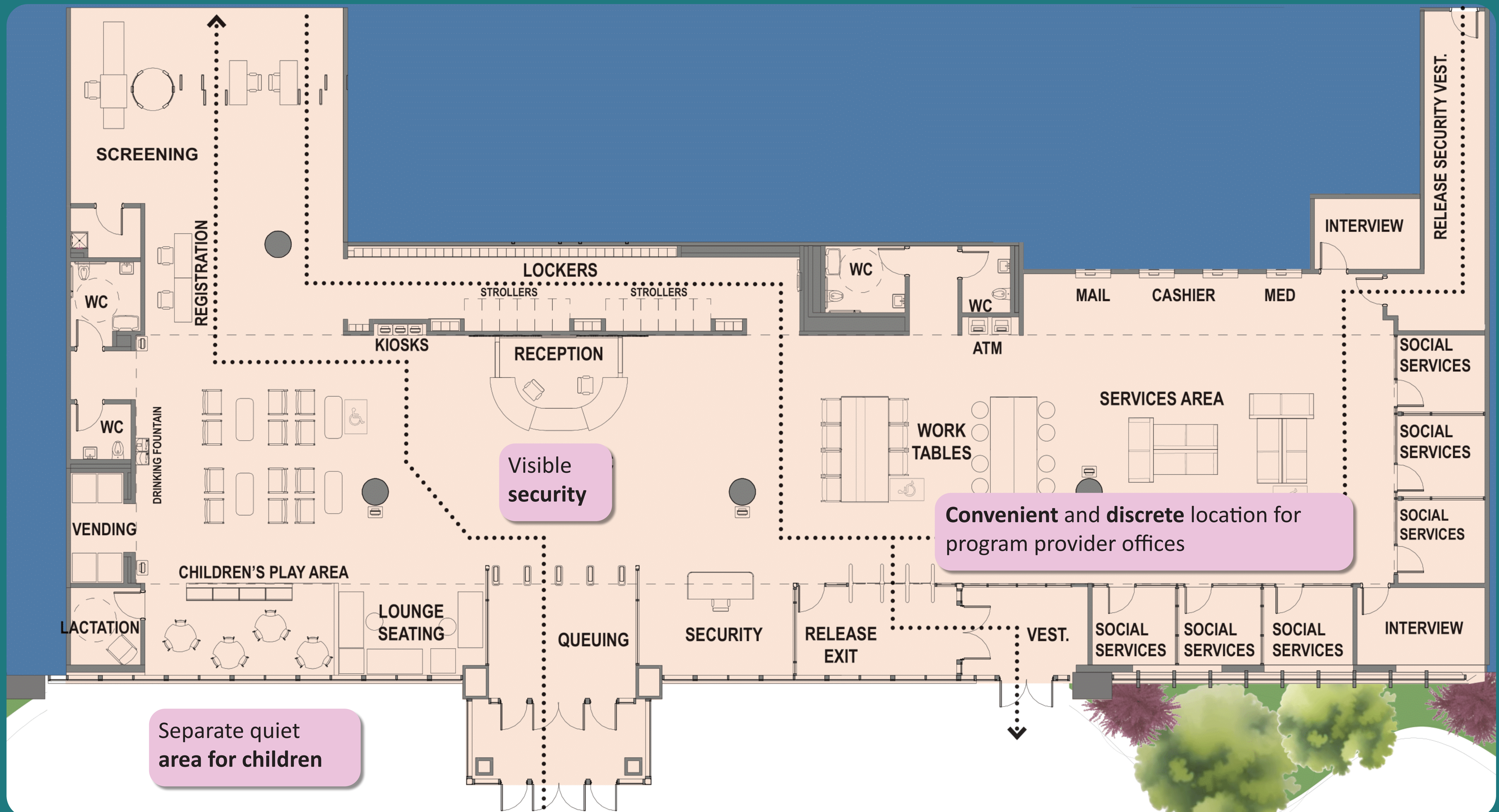
INTERIOR EXPERIENCE - SECURE

Q : HOW CAN WE CREATE A CALMING ENVIRONMENT THROUGH OUR DESIGN?

Q : HOW CAN THE DESIGN OF THE SPACES PROVIDE A SENSE OF DIGNITY AND NORMALITY?

INTERIOR EXPERIENCE - PUBLIC

PUBLIC LOBBY



KEY COMMUNITY ENGAGEMENT TAKEAWAYS

- Provide **comfortable seating** with a **variety of options** including **ADA compliant features**
- Use of **warm, neutral color tones** to promote a relaxing and inclusive environment
- Create separate and quiet **area for children**
- Provide **features** like lactation rooms, vending machines and locker storage for visitor
- Provide USB charging ports, access to Wi-Fi and power

INTERIOR EXPERIENCE - PUBLIC

PUBLIC LOBBY VIEW



CONTACT VISITING VIEW



INTERIOR EXPERIENCE - PUBLIC

Q : WHAT WOULD HELP YOU FEEL WELCOME AS A VISITOR AT THE PUBLIC LOBBY (COLOR, FURNITURE, LIGHTING, TECHNOLOGY) ?

Q : WHAT WOULD HELP YOU FEEL WELCOME AS A VISITOR AT THE VISITING SPACE (COLOR, FURNITURE, LIGHTING, DAYLIGHT)?