



NYC Criminal Justice

NYC DDC Department of Design and Construction

Borough-Based Jails

Community Design Input Workshop #2

March 27, 2025

QN Queens Facility





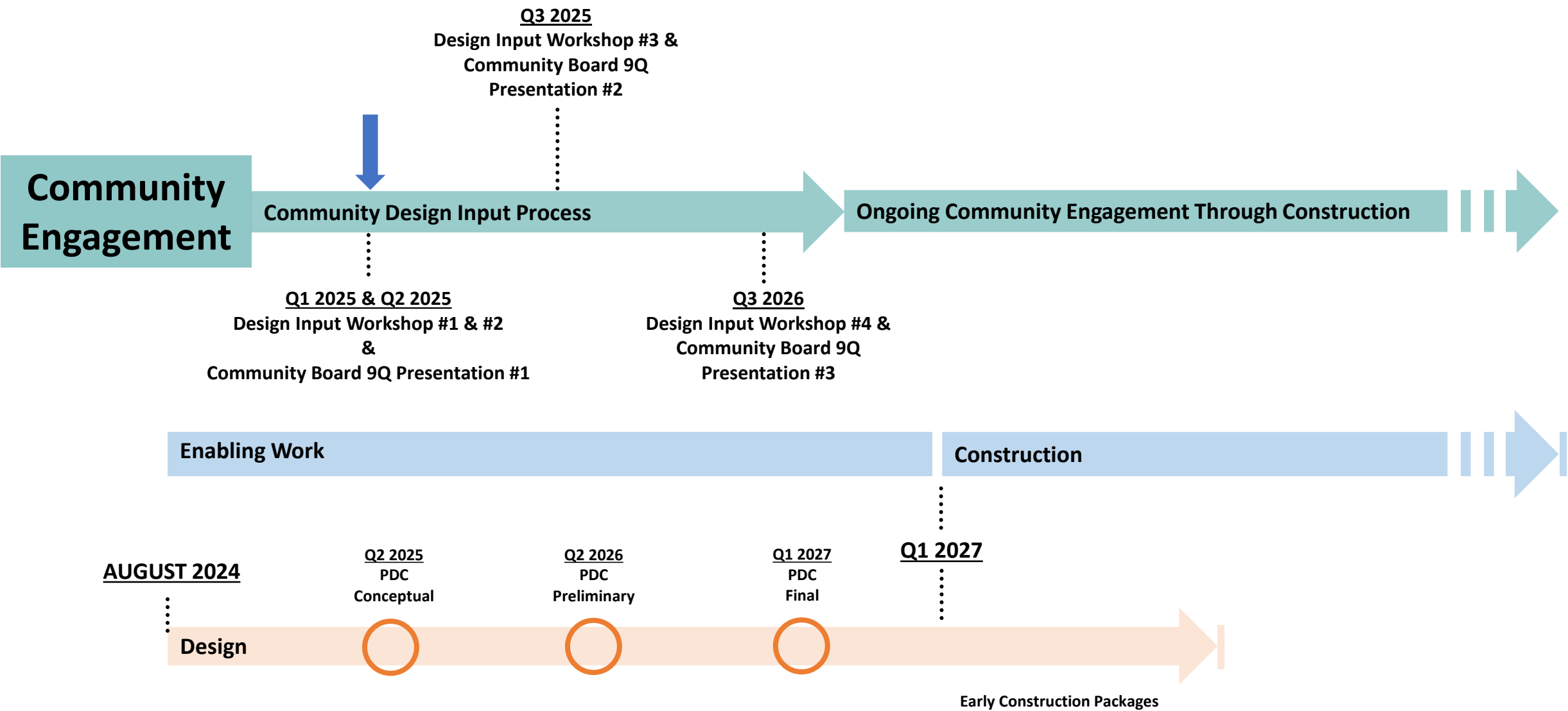
Agenda

- 1** Community Engagement & Design Input Process
- 2** Project Goals & Overview
- 3** Feedback Review and Design Updates
 - 3.a** Public Realm
 - 3.b** Building Appearance
 - 3.c** Interior Experience - Public
 - 3.d** Interior Experience - Secure
- 4** Public Art
- 5** Breakout Sessions
- 6** Group Report Out
- 7** Reflection and Next Steps

Queens Facility

Community Engagement & Design Input Process

BBJ Design-Build and Engagement Schedule



Community Resources During Construction



BBJ Website

<https://rikers.cityofnewyork.us/>



Designated Phone Number (646) 940-0812



Weekly Look Ahead



72-Hour Advisories for Impactful Construction Activities



Community Construction Liaison and Field Office

Angel Pinto- Queens BBJ CCL

(646) 940-0812 / QueensCCL@bbjnyc.com

Monday – Friday 7:00am - 3:30pm



Office of Community Outreach & Notification

WEEKLY CONSTRUCTION BULLETIN

02/24/25 - 02/28/25

Queens Facility PROJECT: BBJ-QFAC BOROUGH: QUEENS DATE ISSUED: 02/21/25

The following is an anticipated work schedule for the upcoming week. However, due to unforeseen field and weather conditions, it may become necessary to change some scheduled work locations, operations, and dates.

PARKING & SIDEWALK ACCESS RESTRICTIONS BETWEEN UNION TPKE AND 82ND AVE ON 126TH ST AND 132ND ST IS EXPECTED FOR THE DURATION OF THE PROJECT

DATE	WORK HOURS	LOCATION	OPERATION
02/24/25 - 02/28/25	7:00 am - 3:30 pm	Existing Queens Detention Center / 80-25 126 th St / Buffer Zone/ 82 nd Ave	Site Maintenance (No Impacts)
02/24/25 - 02/28/25	7:00 am - 3:30 pm	Existing Queens Detention Center / 80-25 126 th St / Buffer Zone/ 82 nd Ave	Soil Borings (Noise & Vibration / Work will take place inside perimeter fencing with no public interaction)

WATER SHUT-OFF NOTIFICATIONS: In addition to a 72-hour Advisory, prior 24-hour notification will be distributed/posted to any / all affected locations(s).

NO PARKING SIGNS: WILL be distributed/posted 72 hours before the temporary elimination of street parking. Please observe posted parking regulations in construction areas.

FOR FURTHER INFORMATION: Contact Angel Pinto at (646) 940-0812 or QueensCCL@bbjnyc.com.

Eric Adams
Mayor

Thomas Foley, P.E.
Commissioner

www.nyc.gov/ddc

Queens Facility

Project Goals & Overview



GENERATIONAL SHIFT IN **CARE AND CUSTODY**

ENHANCING THE CIVIC CENTER OF QUEENS

EFFICIENT, NORMALIZED, AND SAFE PEDESTRIAN EXPERIENCE

SAFE, EFFICIENT, AND UPLIFTING WORKPLACES

BEST PRACTICES IN **ENERGY EFFICIENCY**

ADVANCED SECURITY UTILIZING **NORMATIVE ELEMENTS**

SUPPORTING A MORE **JUST AND EQUITABLE CITY**

EXCEPTIONAL DESIGN THROUGH COLLABORATION

Queens Facility Project Overview

1,040 beds (590 men and 450 women)

- Maximizes flexibility of movement and operations while ensuring "sight and sound" gender separation
- Balanced therapeutic capacity
- Provides programmatic elements, such as a gymnasium, multi-purpose rooms, and educational facilities and workforce development spaces

100 accessory parking spaces below grade

- Parking for authorized City vehicles to alleviate street parking

Pedestrian bridge connection to Queens County Criminal Court

- Secure connection, isolated from public contact, for robust security and efficiency





Design Goals / Approach



Queens Facility

Public Realm

Public Realm - What we heard (by topic)

Landscape Design

- **Include colorful plants** in the design
- **Provide shade areas** for resting and comfort
- **Include green roofs**
- **Create a calming atmosphere** with natural elements
- Ensure **views of sky, sunlight, and greenery** for people in custody

Security & Site Access

- **Improve the sense of security** with increased uniformed public safety presence
- **Maintain access to Courthouse passageway** at all times

Public Space & Amenities

- **Make the campus attractive** to improve public perception of the site
- **Add seating areas** for lunch and relaxation when the weather is nice
- **Provide phone charging stations** or kiosks would be useful
- **Attention to wayfinding/signage**

Traffic & Parking

- **Mitigate pedestrian congestion** around the site and Queens Boulevard
- **Manage vehicle traffic and parking**
- **Use 132nd Street for vehicular access** to the facility
- **Provide Citi Bike station and bike parking**

Community Benefits

- **Serve the community members** as well as building users with positive site development
- **Shield noise** from the surrounding highway

Public Realm - Key Community Engagement Takeaways

- Consider **pedestrian views** at the street-level, **amplify greenery**
- Incorporate **seasonal planting** to create beautiful environment year-round
- Provide **shaded seating** areas for **rest and relaxation**
- Prioritize site development to **serve the community** and **enhance the campus appeal**



Public Realm Goals

Extending

Borough Hall Park

Connecting

through a park-like
environment

Creating

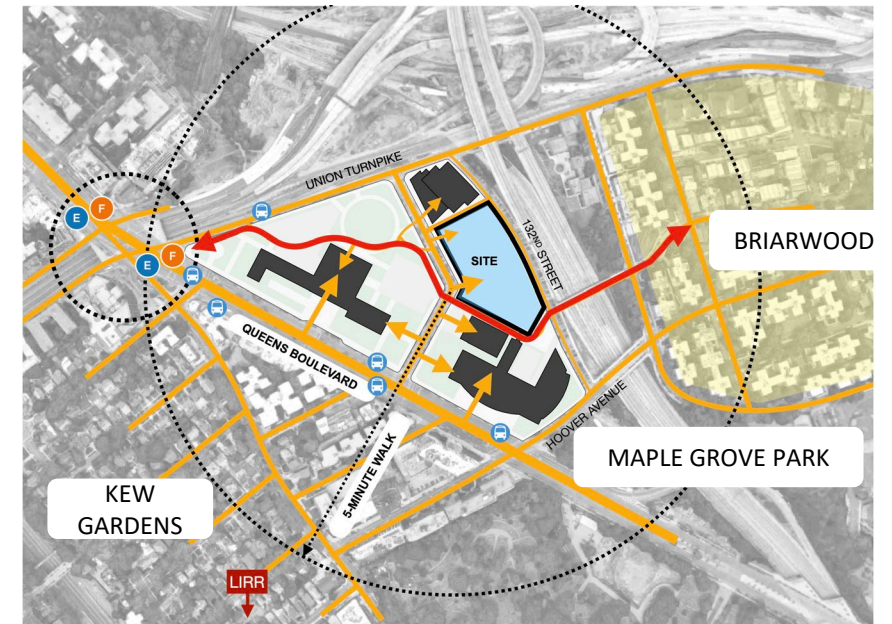
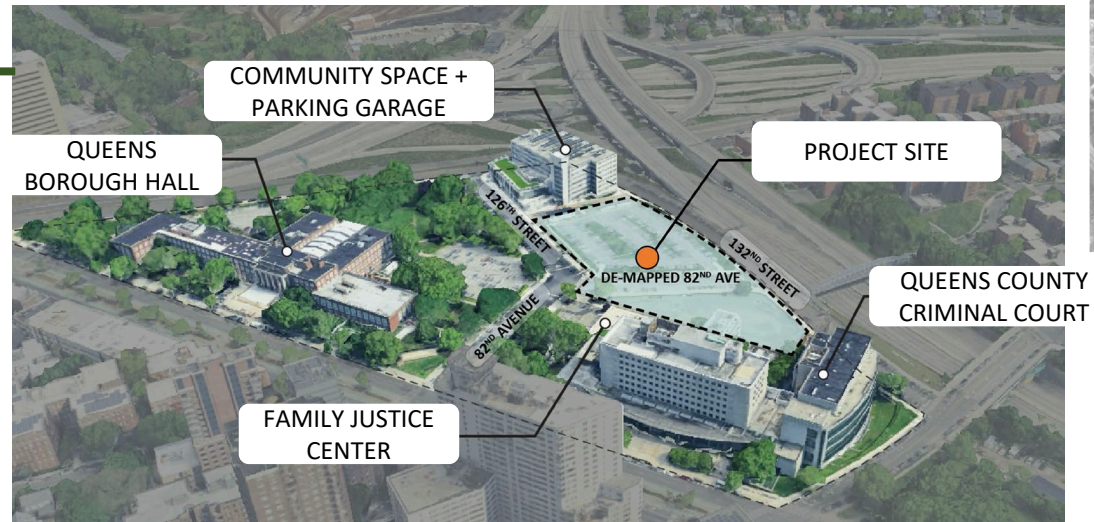
a pleasant and safe
pedestrian experience

Site Context – connect at different scales



Regional green belts

Connect to the civic center open spaces



Connect the neighborhood walks

Site Context – build upon the character of the place



Views, canopies, and pedestrian walkways

Tree-lined streets

Smaller garden-like open spaces



Site Design Objectives

- **Enhance** the civic campus
- **Create** a cohesive pedestrian experience
- **Soften** edges with landscape
- **Integrate** security with streetscape
- **Emphasize** indoor/outdoor relationship
- **Maximize** green infrastructure



Natural Landscape Elements

Trees

Build upon what is already on the campus and in the neighborhood



Street tree: London Planetree
Platanus x acerifolia
(Photo from Boro Hall Park)



Street tree: Pin Oak
Quercus palustris
(Photo from Biarwood)



Ornamental tree: Eastern Redbud
Cercis canadensis



Ornamental tree: Kousa Dogwood
Cornus kousa



Screening tree: European Hornbeam
Carpinus betulus 'Fastigiata'

Shrubs

Native species



Underplanting: Inkberry
Ilex glabra



Underplanting: Swamp milkweed
Asclepias incarnata



Underplanting: Switchgrass
Panicum virgatum



Underplanting: Wild Indigo
Baptisia tinctoria

Groundcovers

Drought-tolerant and low maintenance



Allegheny Spurge
Pachysandra procumbens



Virginia Creeper
Parthenocissus quinquefolia



Common Periwinkle
Vinca Minor



Community Passageway Mound: Stonecrop
Various sedums



Streetscape Toolkit



Bench



Long Bench



Large Tree Planters



Tree, Rain Garden + Bollards



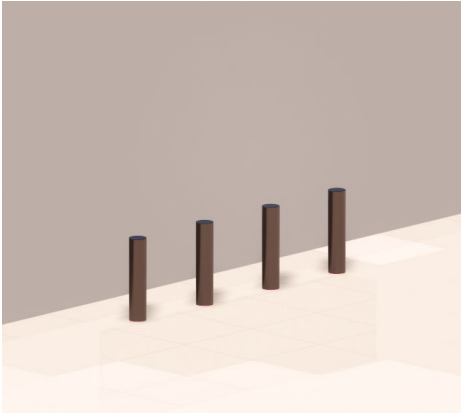
Curved Wall With Planting



Long Wall With Planting

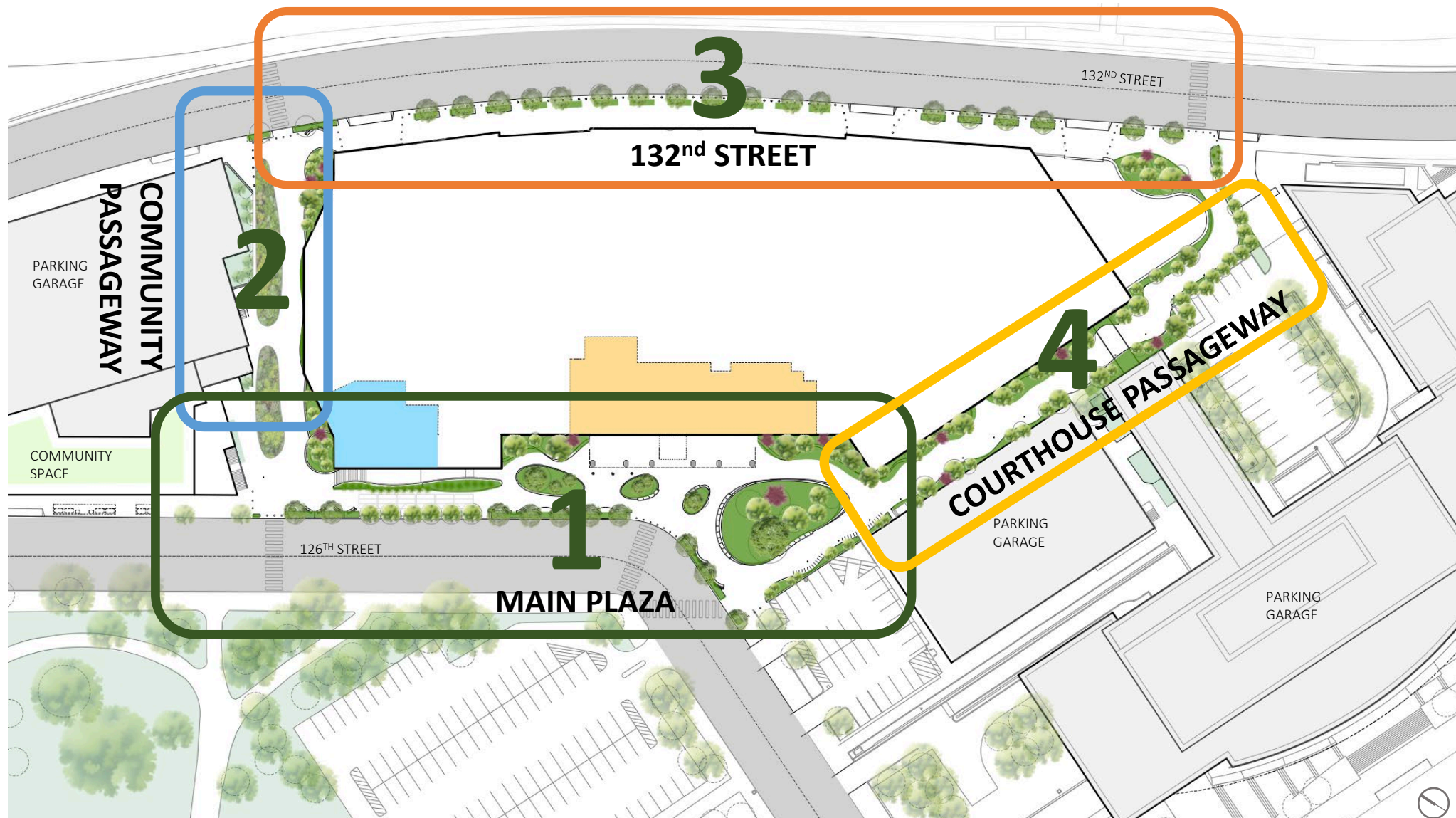


Planters



Removable Bollards

Concept Site Plan – the four public environments

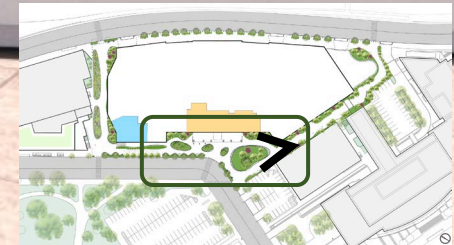


1. Main Plaza – near the building entrance

Park-like environment

Views and greenery

Bike parking

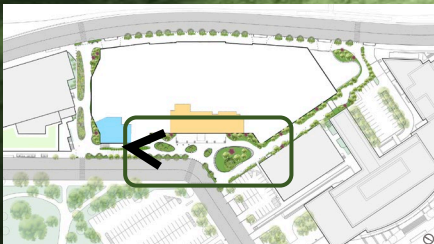


1. Main Plaza – along 126th Street

Colorful plants

Seating and shading

Seasonal plantings



2. Community Passageway – at 126th street

Seating and shading

Seasonal plantings

Views and greenery



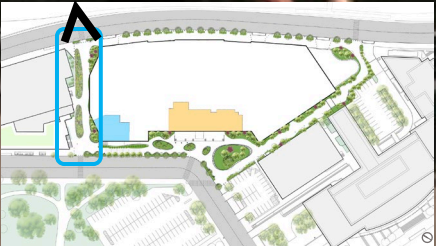
2. Community Passageway – at 132nd street, proposed



Seating and gathering space

Seasonal plantings

Garden-like landscape



3. Courthouse Passageway, proposed

Views and greenery

Calming atmosphere

Seasonal plantings



4. 132nd Street

Lighting for nighttime safety

Wide sidewalk

NYC/DEP rain garden
for green infrastructure



Queens Facility

Building Appearance

Building Appearance - What we heard (by topic)

Building Appearance

- Desire to understand **size and visual impact** (especially in comparison to surrounding buildings)
- **Massing strategy** skillfully downplays the building's height
- Impact on Queens Boulevard residential towers and their **views**

Comfort and Scale

- **Comfortable design** important for users
- **Daylight access** improves interior environment
- **ADA accessible** design important

Noise & Environmental Impact

- Concern about **noise pollution** affecting immediate neighbors
- Concern about **exposed mechanical systems** visible to Queens Boulevard residential towers
- Need for **mitigation strategies**

Building Appearance

Key Community Engagement Takeaway

- Provide more **information** regarding **proposed building size** and **configuration** in relationship to the nearby residential towers
- Need to **balance openness** for people in custody while **maintaining privacy for neighboring residents**, especially concerning the outdoor recreation spaces
- Strong **support for a design** focused on **daylight** access and a **welcoming, transparent, and campus-integrated aesthetic**

Relationship to Surrounding Neighborhood

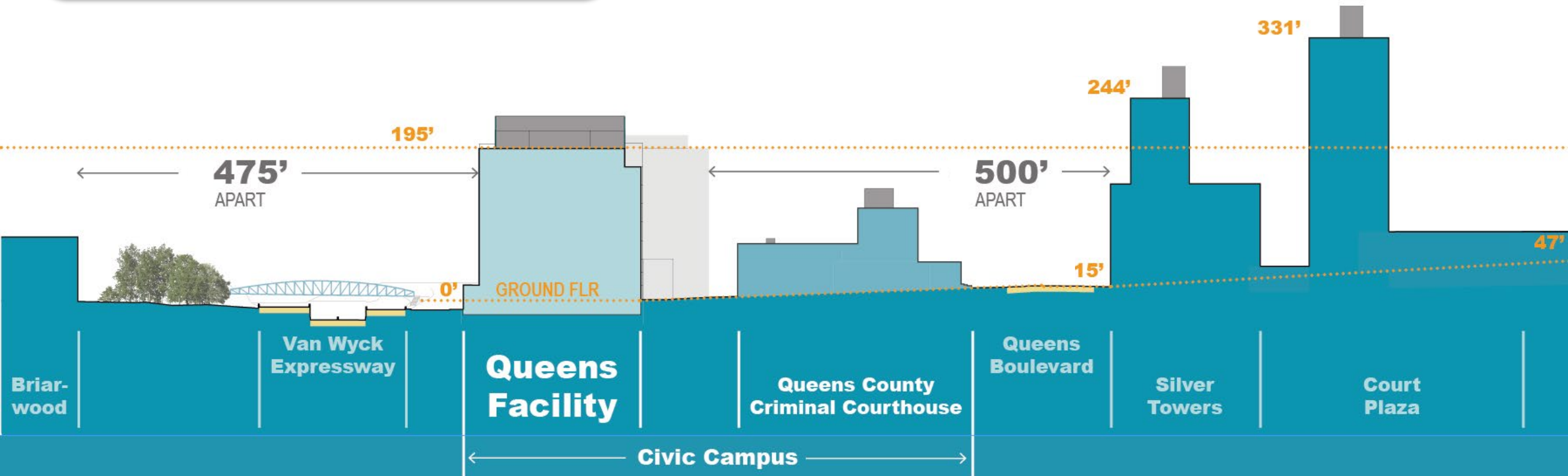
Relationship Clarified:

- Expressway and Queens Boulevard buffer campus from neighbors
- Courthouse buffers new facility from Queens Boulevard

Relationship to Surrounding Neighborhood

Relationship Clarified:

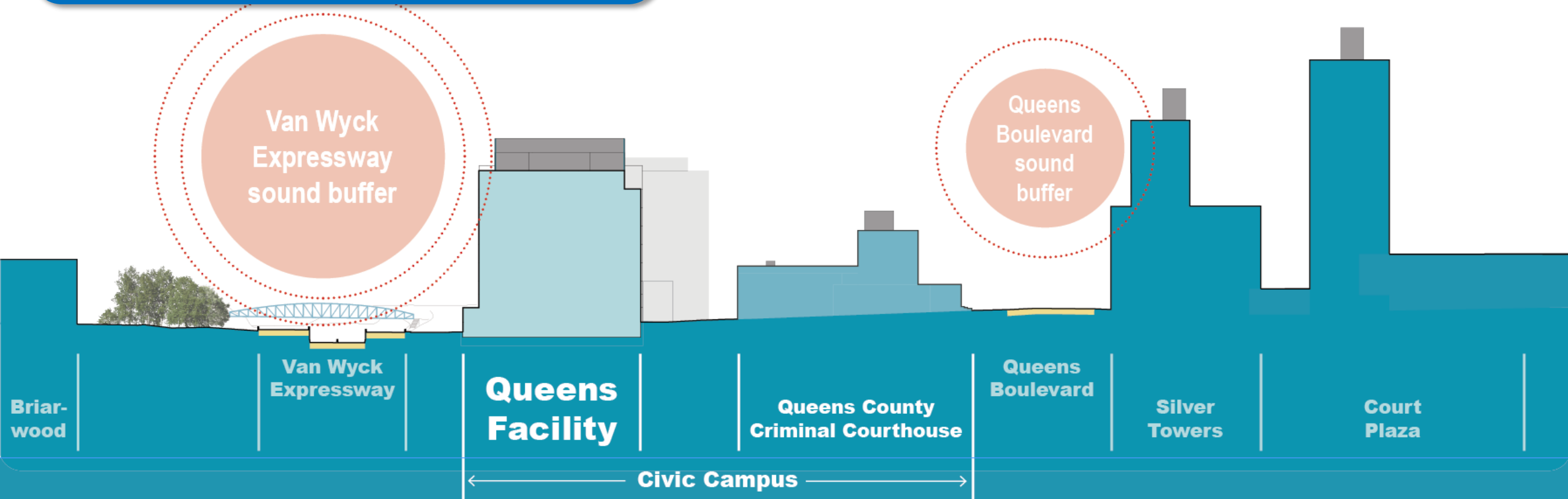
- Nearby residences are far away
- Queens Facility is not the tallest building in the neighborhood
- Facility's site is lower than neighbors



Relationship to Surrounding Neighborhood

Relationship Clarified:

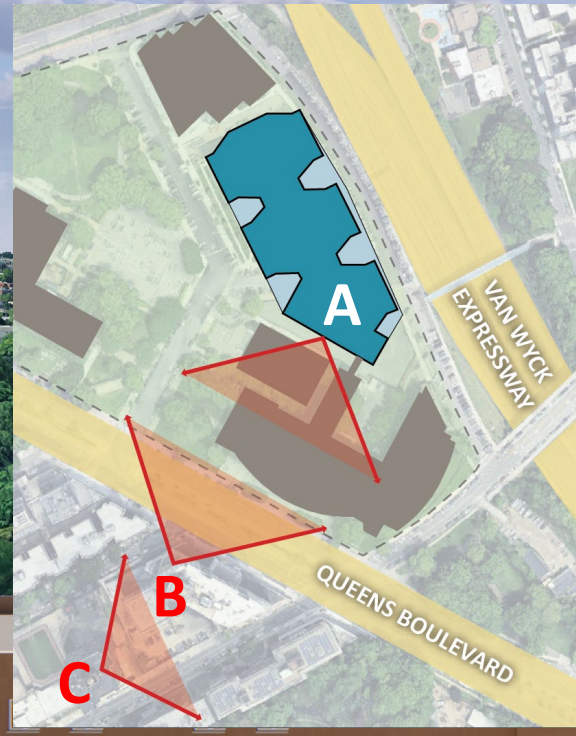
- Expressway and Queens Boulevard buffer campus from neighbors
- Residences are far away



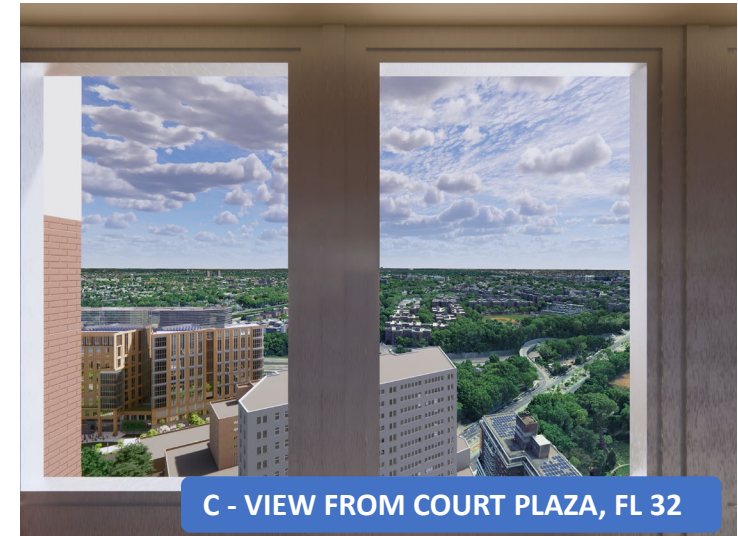
Relationship to Surrounding Neighborhood

Relationship Clarified:

- Visual impact to towers residents studied
- Fully screened rooftop mechanical equipment
- Facility obstructs view of Van Wyck Expressway



A - VIEW FROM QUEENS FACILITY ROOF



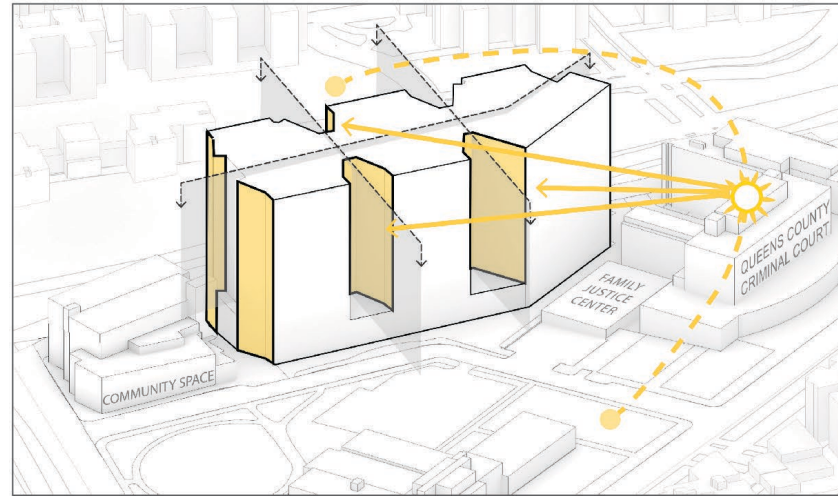
C - VIEW FROM COURT PLAZA, FL 32



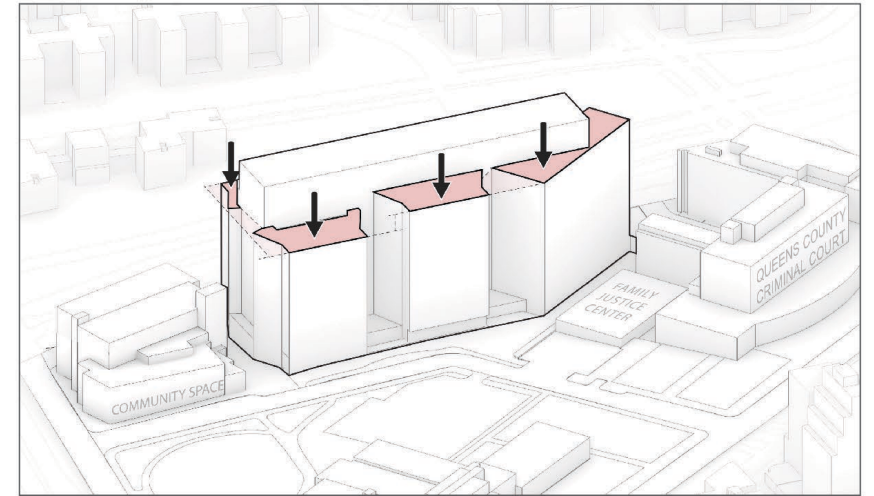
B - VIEW FROM SILVER TOWERS, FL26

Massing Strategy

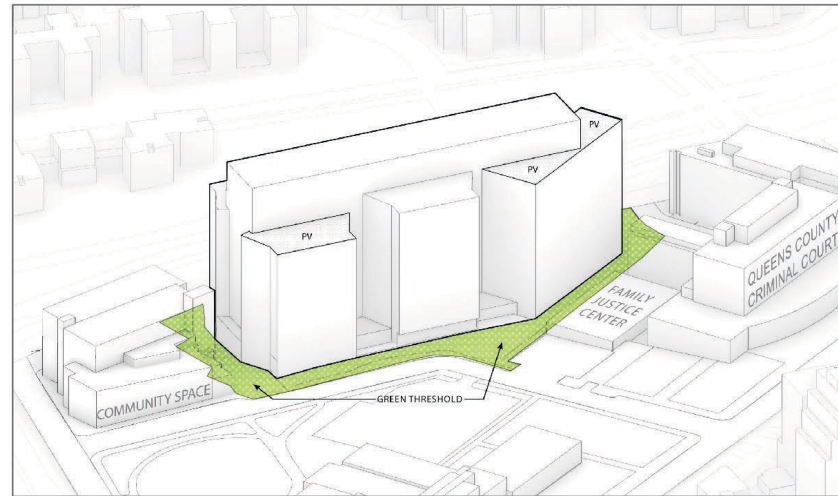
1. Maximize access to daylight
2. Reduce perceived bulk with multi-level roof
3. Extend green connection at street level
4. Relate to adjacent buildings



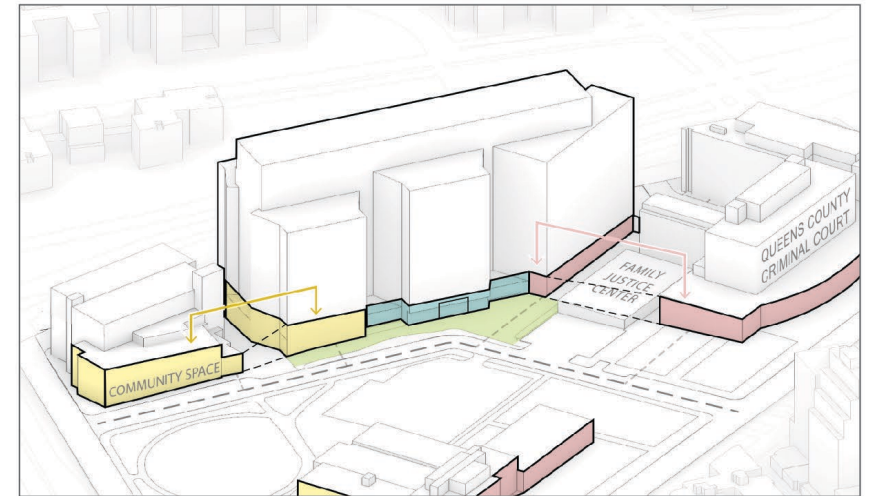
1



2

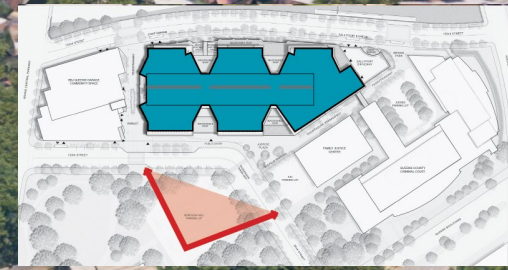


3



4

Enhancing Queens Civic Campus



Contrasting background material reduces the visual building mass

Façade Design



**Embrace
Context**

**Emphasize
Daylight**

**Extend
The Green**

**Privacy vs.
Openness**

Façade Concept – Neutral Palette



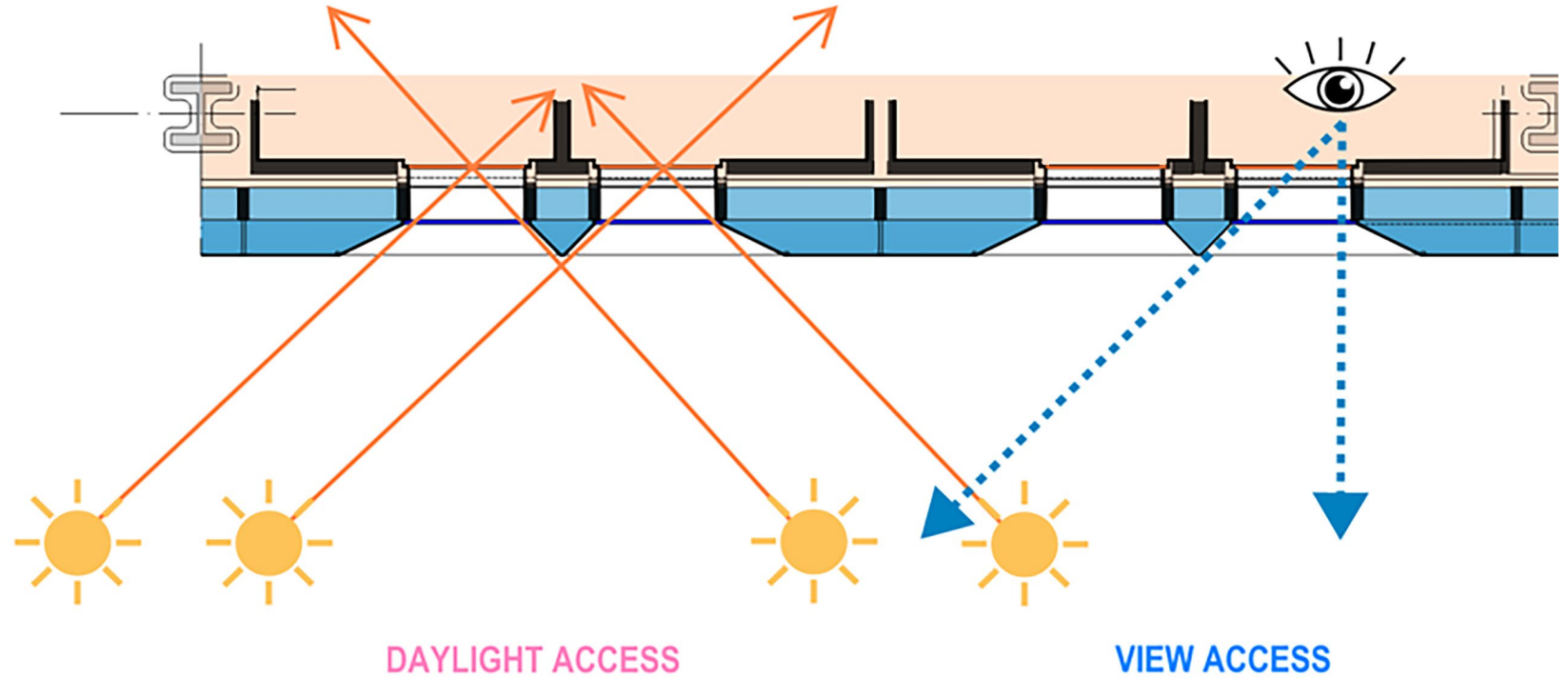
Contrasting background material reduces the visual building mass

March 2025

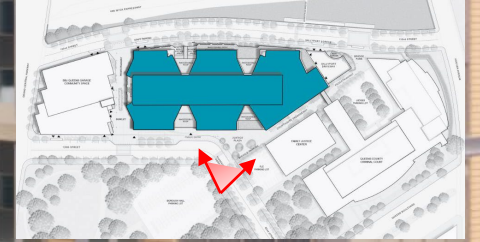
Preliminary Illustrations for Discussion Purposes Only

Façade Concept – Emphasize Daylight

- Emphasize daylight throughout the facility
- Ensure access to natural light for all occupants



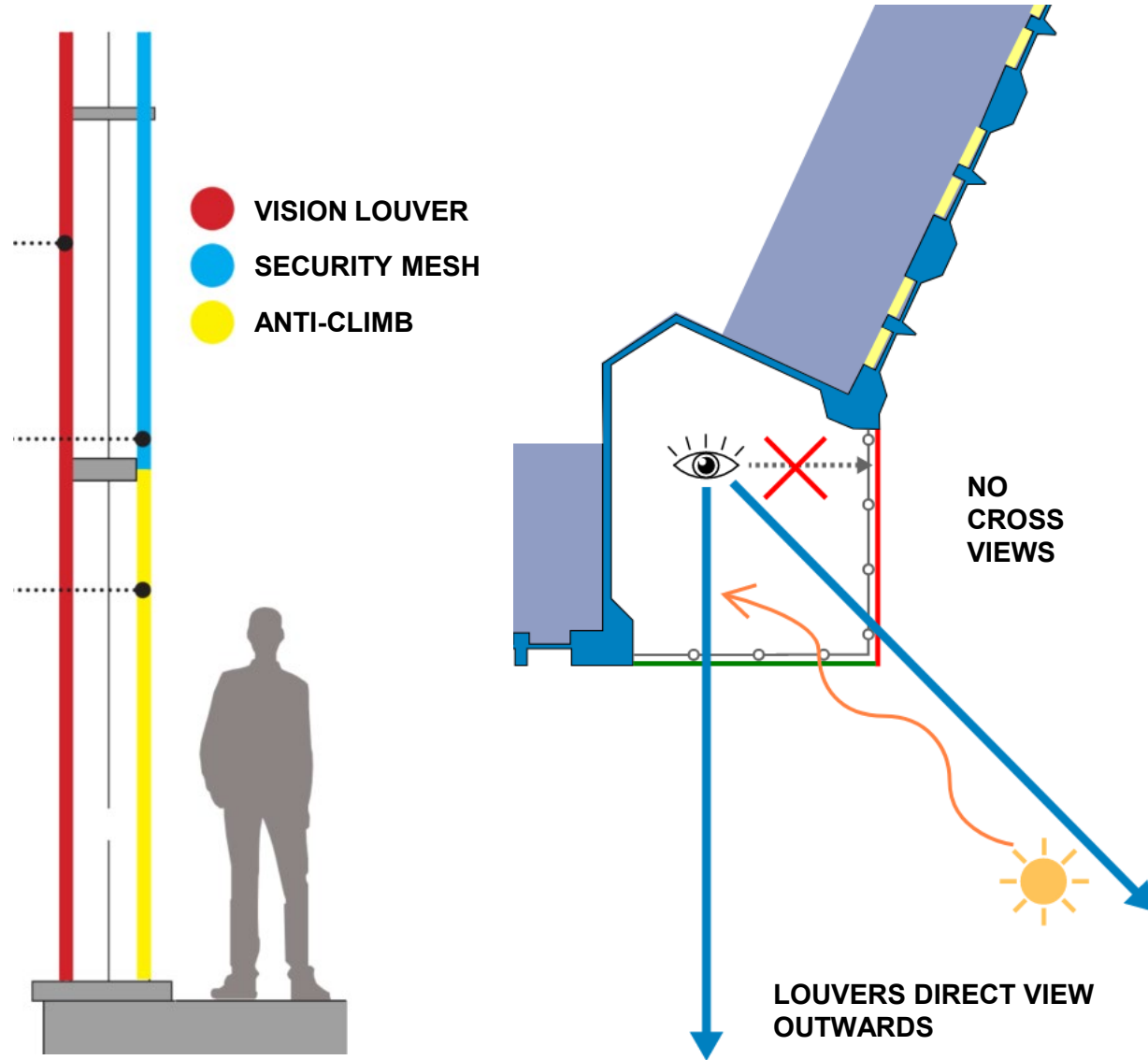
Main Plaza Experience



Lobby facade simplified

LOBBY FACADE

Façade Concept – Privacy vs. Openness



Queens Facility

Interior Experience - Public

Interior Experiences (Public) - What we heard (by topic)

Public Interior Experience

- Focus on creating a clean, **welcoming atmosphere**
- **Comfortable seating** arrangements with a variety of options
- Define **visiting process** and space

Brightness and Color Tone

- **Lighting** should be **bright** yet soft to avoid glare
- **Warm, neutral color tones** to promote a **relaxing** and inclusive environment

ADA Accessibility

- Seating should be **ergonomic**, offering **variety** in size, height, and with or without armrests to **accommodate different needs**
- Provide **storage solutions** that are **ADA-compliant** and **stroller-friendly**
- **Accessible bathrooms** with changing stations

Child-Friendly Areas

- Create **separate, quiet areas for children** during visits.

Security & Supervision

- Ensure there is **visible security** with officers present in the lobby and visiting areas
- Clearly **separate male/female visiting** areas for privacy and safety

Locker & Storage

- Provide **secure locker storage** for visitors' belongings
- Location should be convenient but discreet, **not interfering with high-traffic areas**

Wayfinding and Reception

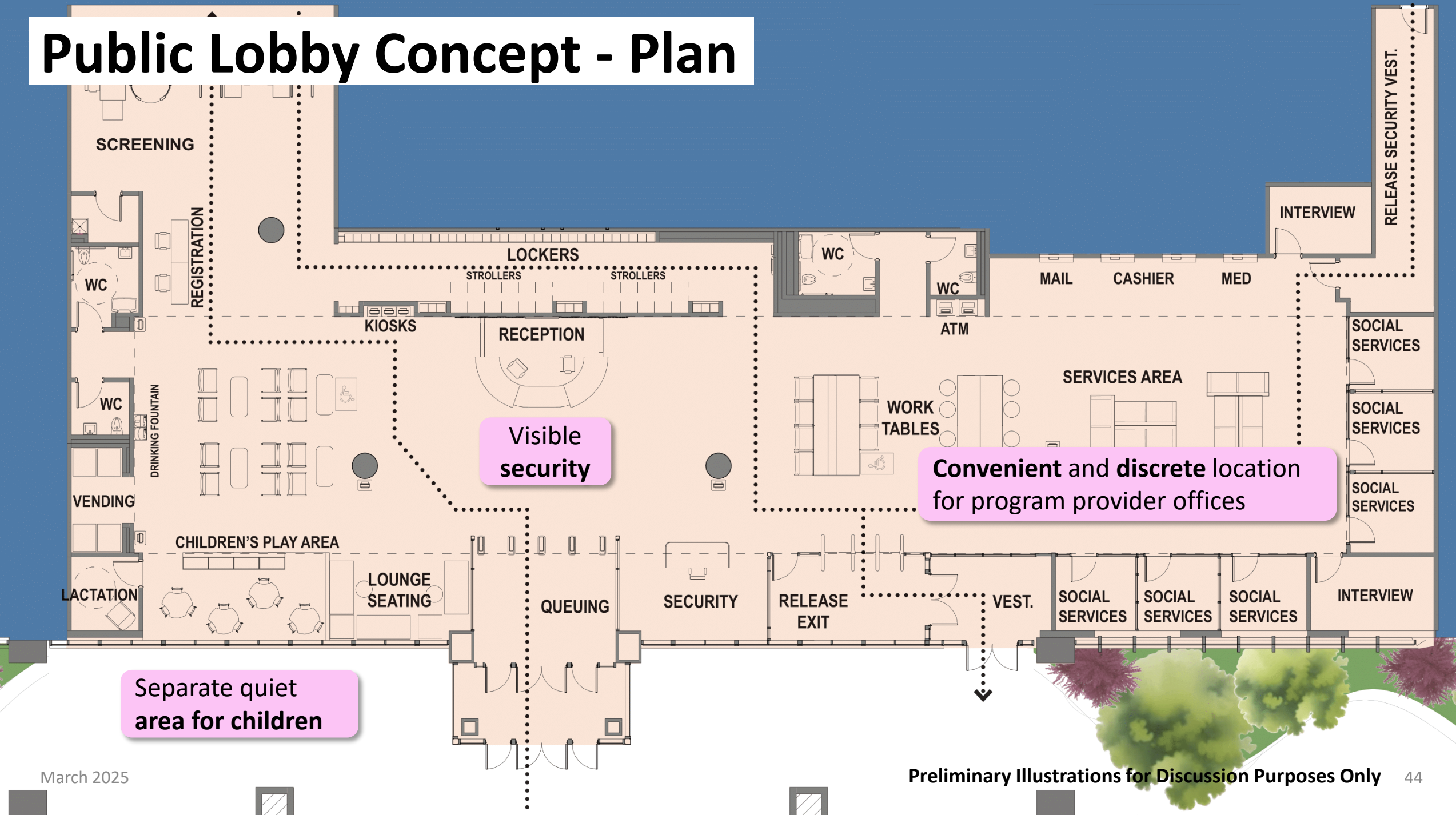
- Ensure **signage is clear and easy** to follow for all visitors
- **Reception areas should be easily accessible** from various points in the building to minimize confusion

Interior Experiences (Public)

Key Community Engagement Takeaway

- Provide **comfortable seating** arrangements with a **variety of options** including **ADA compliant** features
- Use of **warm, neutral color tones** to promote a **relaxing and inclusive** environment
- Create separate and quiet **area for children**
- Provide **features** like lactation rooms, vending machines and locker storage for visitor
- Provide USB **charging ports**, access to **Wi-Fi** and **power**

Public Lobby Concept - Plan

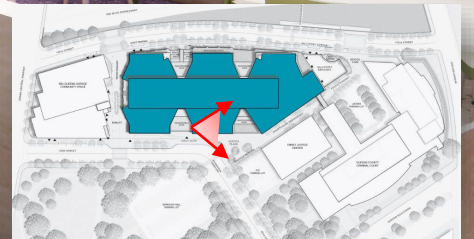


Public Lobby Concept

Warm and neutral
color palette

Separate and quiet
area for children

Variety of
seating options

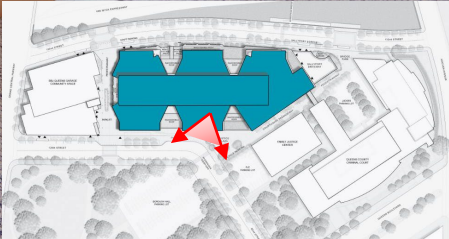


Public Lobby Concept - Waiting

Welcoming atmosphere

Visible security

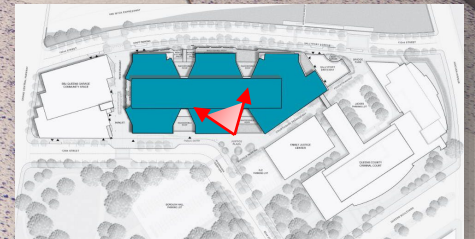
Access to **Wi-Fi** and **power**, USB charging ports



Public Lobby Concept - Services

**Comfortable
seating**

**Convenient, discrete
location for program
provider offices**



Contact Visiting Space Concept

Soft acoustics

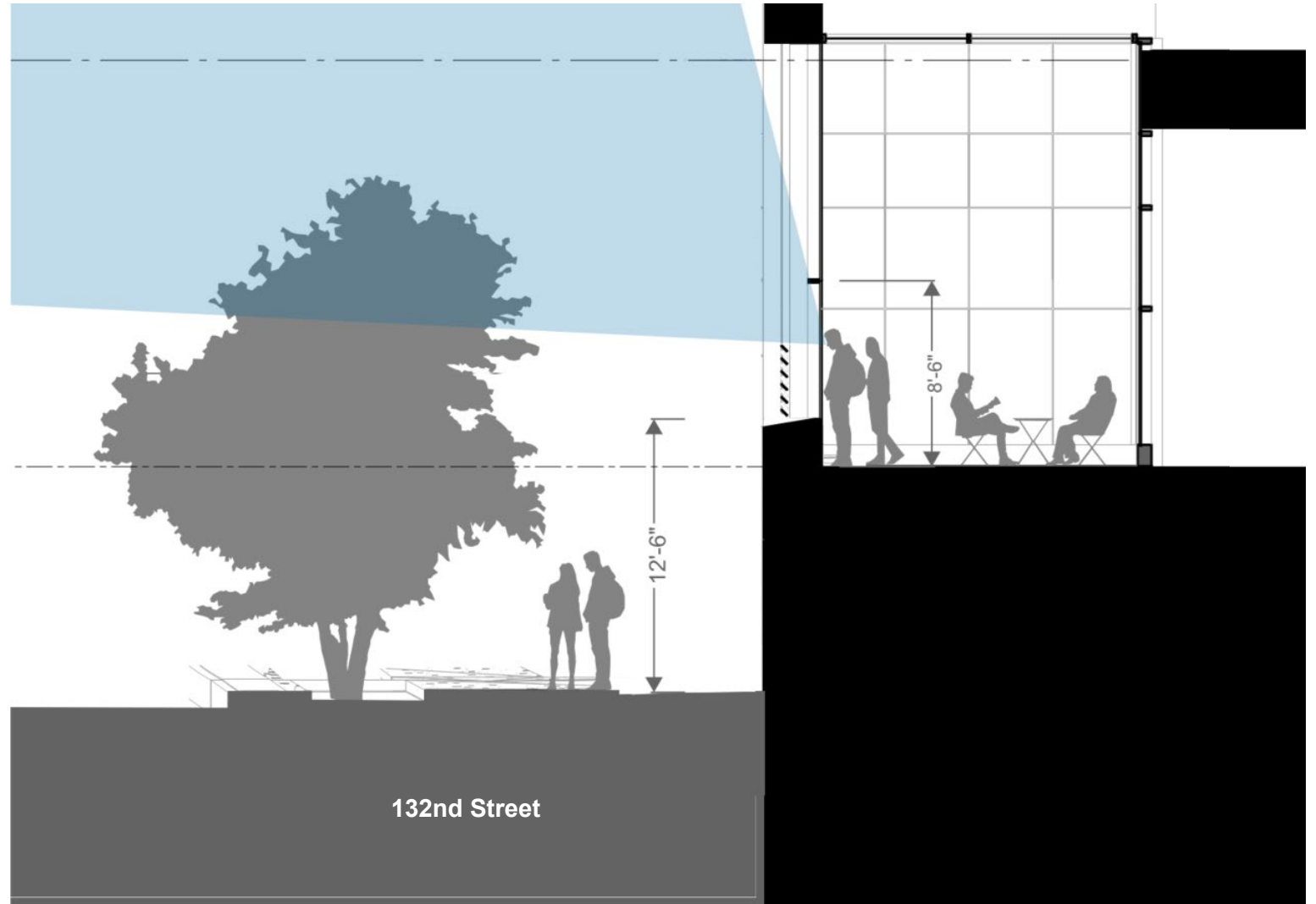
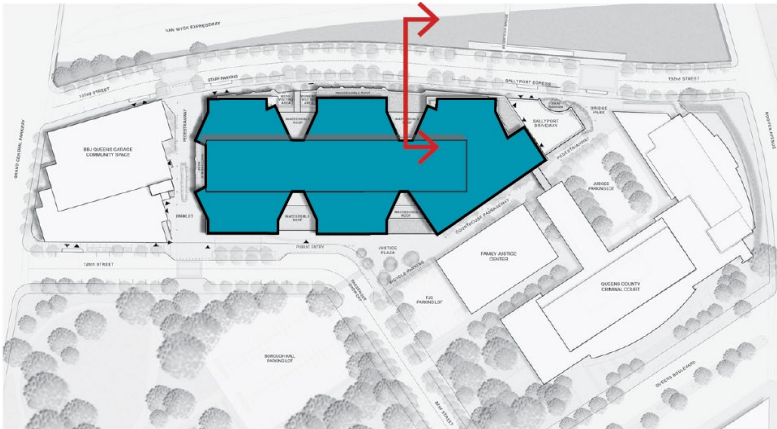
Access to **daylight**
and **views**

Color and graphics

Child-centric
family visiting

Visiting Space Site Section

- Secure mesh enclosure
- Openness to sky
- Louvers control downward views, allow daylight
- Privacy from street below



Queens Facility

Interior Experience - Secure

Interior Experiences (Secure) - What we heard (by topic)

Interior Design & Environment

- **Provide color** in spaces such as cells
- **Avoid institutional look** in housing areas
- Create spaces that have **inviting light** and **access to daylight**
- Interior furniture to be **comfortable but safe** for the people in custody

Accessibility & Comfort

- Allow sinks with **self-controlled** temperature for maximum **comfort**
- **Specify** areas and accommodations that are ADA
- **Diverse seating** for ADA that includes arm rest
- Address **claustrophobia concerns**

Gender & Diversity

- **Accommodations for gender / diversity**
- Clarify how women are separated from men
- Address classification separation **concerns**
- Supply storage and receptacle for **menstrual products**

Recreation & Outdoor Spaces

- Clarify recreation space **capacity**
- Recreation **area concerns** (size, airflow, engagement with pedestrians, and mesh)
- Analyze actual **light and air conditions** in the recreation space
- Elaborate on **horticulture space** and provide **respite/consult spaces**

Interior resources and rehabilitation

- Elaborate on the design of interior spaces such as **law library, reading areas and study spaces**
- **Seek opinions** from **previously incarcerated** individuals via Justice Department Task Force
- Provide more detail on **Medical Care** within the facility

Privacy & Security

- **Manage views** from/to neighboring buildings
- **Secure 1-on-1** therapy spaces
- **Provide privacy in spaces** such as multi-purpose room or rooms for religious practices

Interior Experiences (Secure)

Key Community Engagement Takeaway

- Provide **comfortable, non-institutional spaces**, including **color / graphics**, **privacy** in multi-purpose rooms, access to **daylight**, and **safe** environments
- Ensure sufficient space for **indoor and outdoor recreation** activities while considering **privacy concerns** in recreation areas
- Prioritize **medical care** and **therapeutic spaces** for all genders, such as private therapy rooms and counseling areas

Maternity Space Concept



Convenient
medical care

Access to daylight
and views

Nurturing color palette

Nursery Space Concept

Access to daylight
and views

Nurturing
color palette

Convenient
medical care

Women's Law Library Space Concept

**Access to daylight
and views**

Colors and graphics

Quiet acoustics

General Population Housing Unit Concept

Colors and graphics

Convenient access to
counseling and
medical care

Access to daylight

Balance of sightlines
and **privacy**

Comfortable,
moveable furniture

General Population Housing Unit Concept

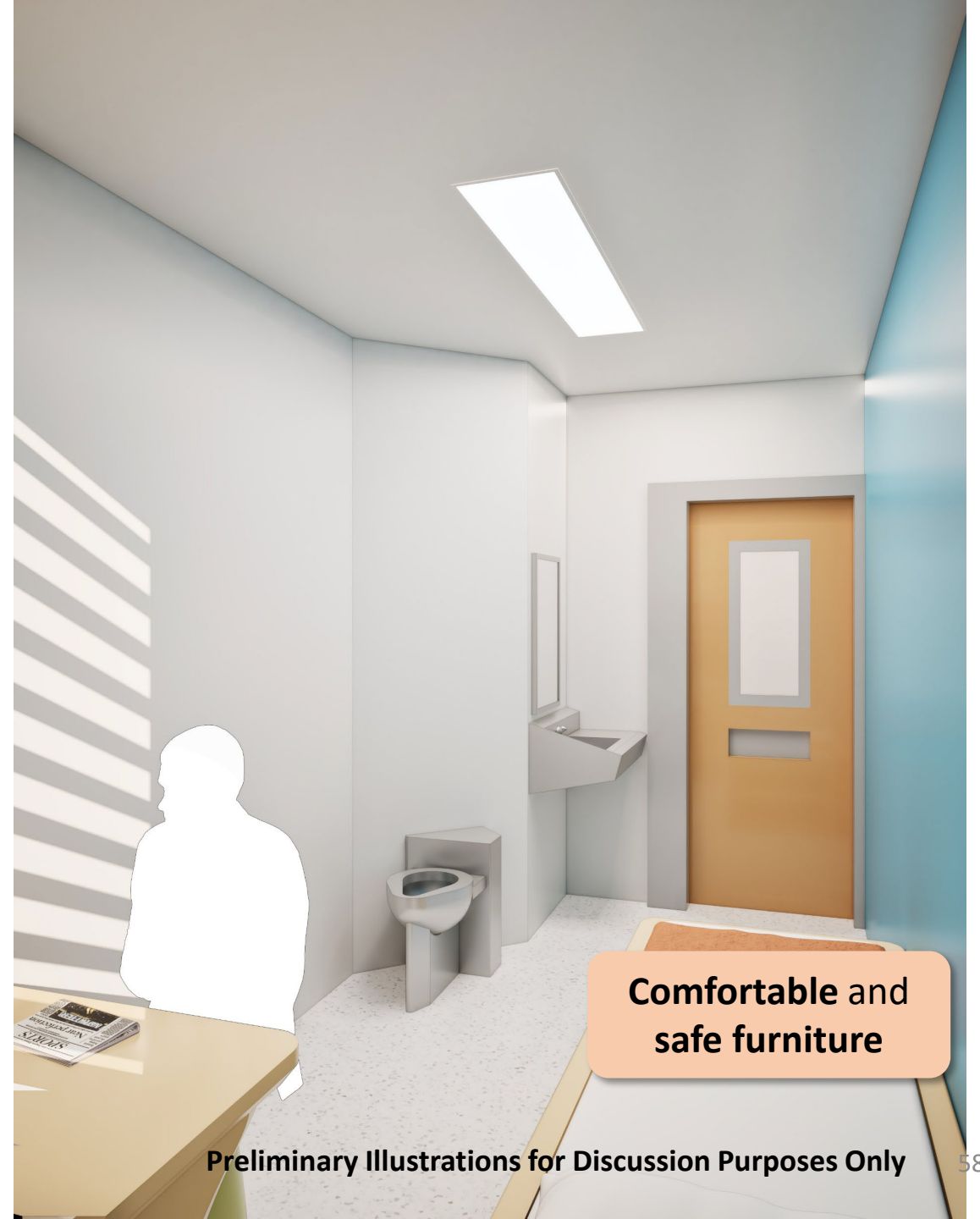
Colors and graphics

Convenient access to
counseling and
medical care

Balance of sightlines
and **privacy**

Comfortable,
moveable furniture

Typical Cell View



Therapeutic Housing Unit Concept

Colors and graphics

Access to daylight

**Convenient
medical care**

**Comfortable,
moveable furniture**

Outdoor Recreation Space Study

Access to **daylight**
and **fresh air**

Active and **passive** uses

Sight and **sound** mitigation

Indoor Gym Space Concept

Large indoor recreation

Active and passive uses

Horticulture Program Concept View

Access to **daylight** and **fresh air**

Access to **nature** and **educational use**

Queens Facility

Public Art

Public Art Commissioning Plan

Overview

- Each BBJ facility project is participating in the City of New York's Percent for Art Program
- Artists will be selected through a two-panel process
- Artwork concepts will be developed in collaboration with people with lived experience and project stakeholders

Public Art Commissioning Plan

Goals

- Commission site-specific contemporary artwork of the highest caliber that is appropriate to the use of the facility
- Provide artwork for multiple audiences: people in custody, staff, visitors, & general public
- Integrate artwork with design to support positive experiences of the facility

Public Art Commissioning Plan

Artist Selection Participants

Voting Panelists

- Dept. of Cultural Affairs
- Dept. of Design and Construction
- Dept. of Correction
- Mayor's Office of Criminal Justice
- H+H Correctional Health Services
- 3 arts professionals with relevant experience and expertise

Advisory Panelists

- Architect and design team
- Public Design Commission
- Elected officials
- Community Board
- Other stakeholders

Public Art Commissioning Plan

Timeline



** All dates subject to change*

Public Art Commissioning Plan

Contact Information

Questions? Interested in participating? Artist suggestions?

Email: **QueensCCL@bbjnyc.com**

Subject: Public Art

Queens Facility

Breakout Group Discussions

Queens Facility

Group Report Out

Queens Facility

Reflection and Next Steps



NYC Criminal Justice

NYC DDC Department of Design and Construction



Borough-Based Jails

Thank You

QN Queens Facility