

Correctional Health Services

NYC Board of Correction Meeting
March 14, 2023



Substance Use Interventions

Intake screening and evaluations by nursing and medical

Identification and treatment of withdrawal ± early referral to substance use services

Key Extended Entry Program (KEEP)

Methadone and buprenorphine maintenance ± counseling ± post-release/transfer care coordination

Harm reduction interventions

Patient and DOC naloxone training ± post-overdose outreach ± jail/visitor center naloxone distribution

Integration into medical and mental health treatment

Ongoing screening, counseling ± THU groups ± GATE units



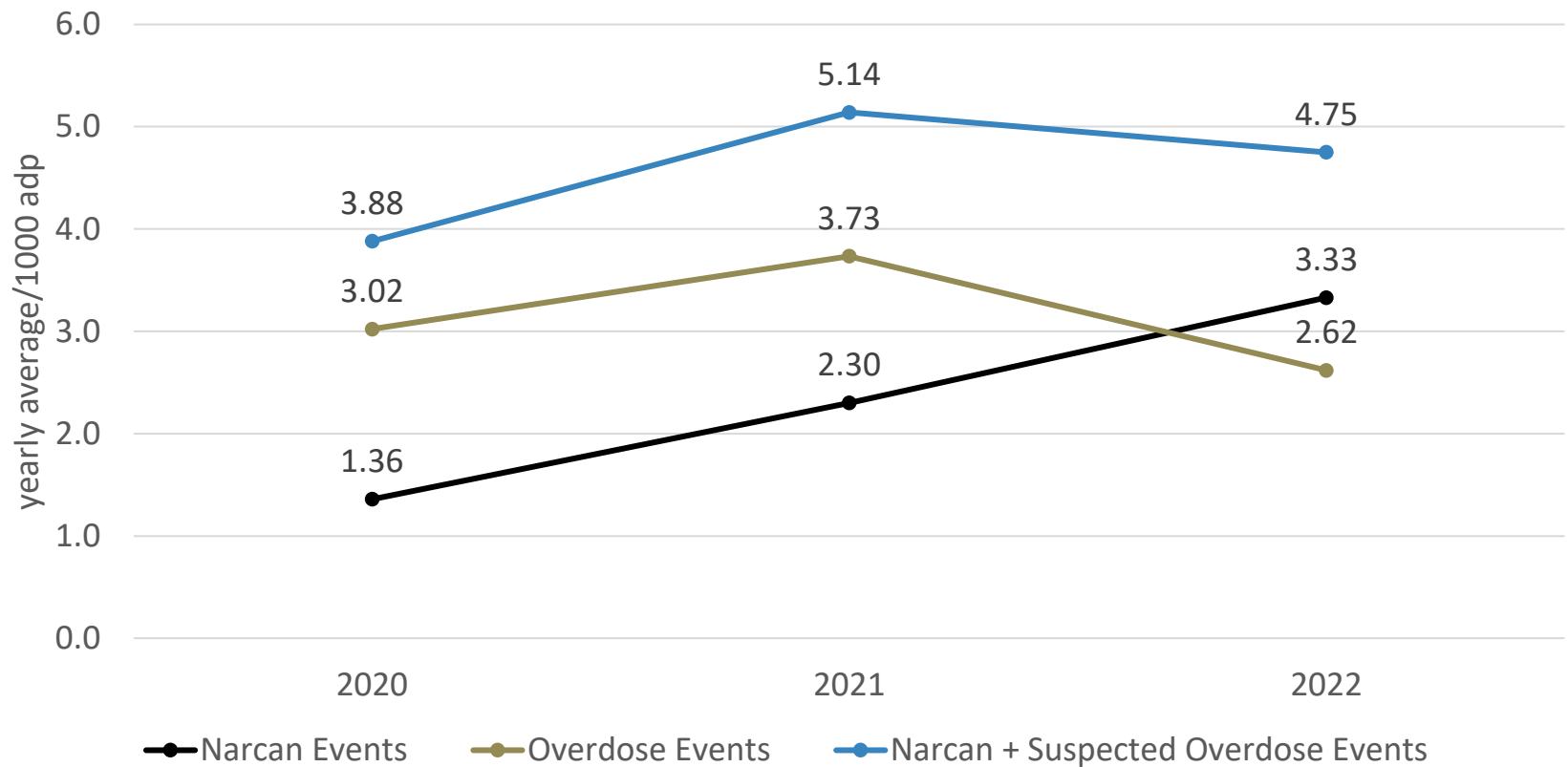
KEEP Engagement

- KEEP engages with about 94% of eligible patients
- About 88% of these individuals choose to enroll in the program
- Individuals currently enrolled in KEEP: 709 patients



Narcan, Overdose, and Narcan + Suspected Overdose Events

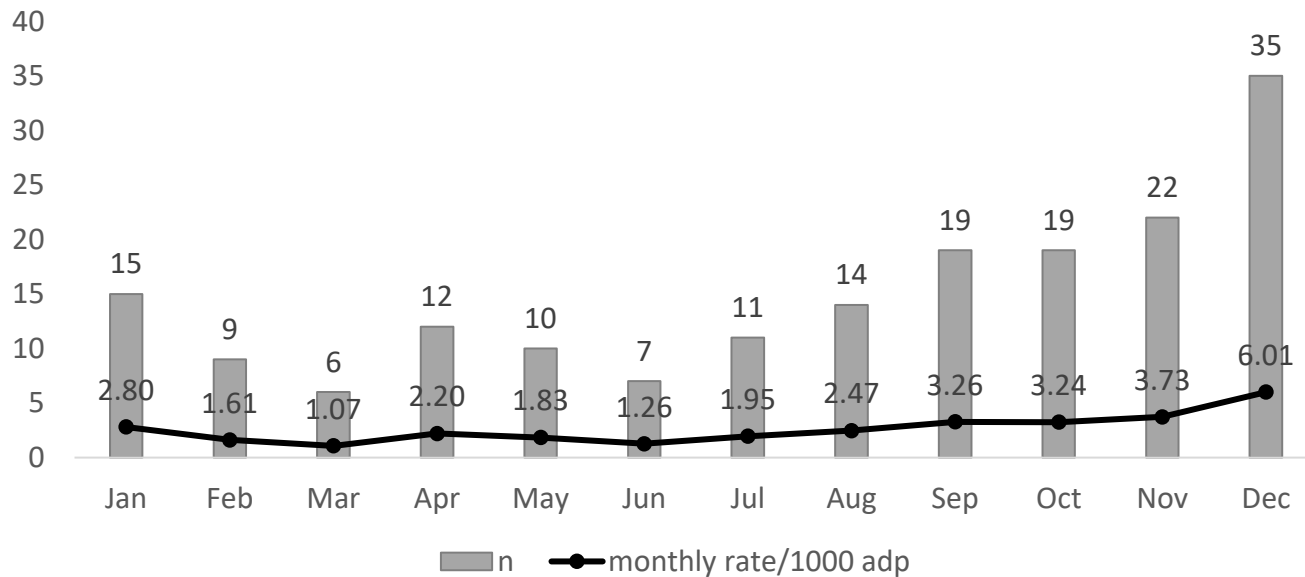
Narcan, Overdose, and Narcan + Suspected Overdose Events
2020 - 2022



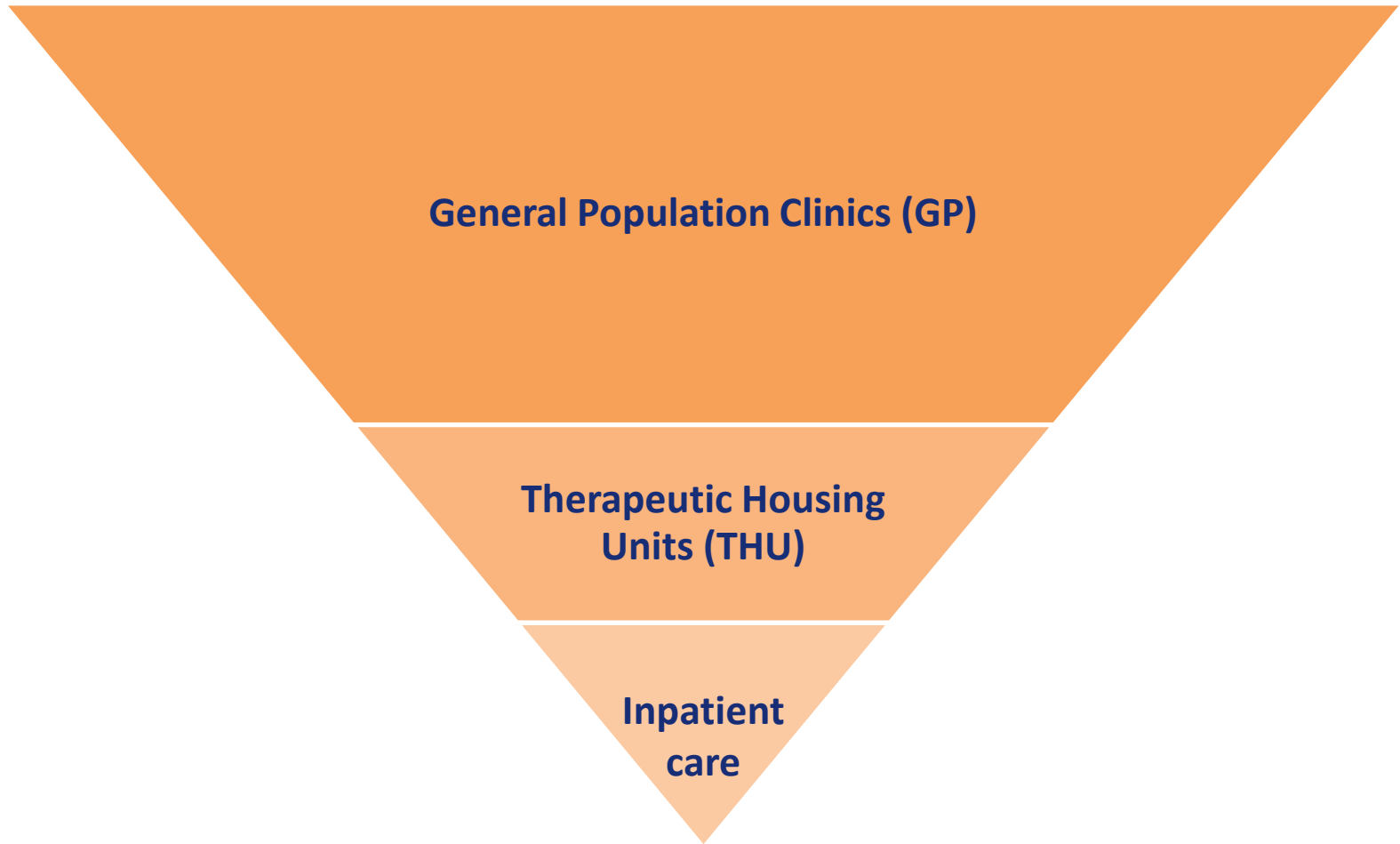
Overdose Events in 2022

Overdose Events* in 2022

*Includes all encounters where overdose, poisoning, or K2 are noted.



Therapeutic Housing Units Levels of Care



THUs: Therapeutic Impact

Cohorting of highest risk patients

Enhanced clinical surveillance and care coordination

Robust treatment interventions



- Opened in March 2017
- Same MH leadership team oversees GP, MO and PACE
- Housing type: cell
- Census/max capacity: 25/28
- PACE model:
 - Daily patient contact, on-site staff offices, individual and group treatment, steady clinical staff and continuity of care



Improving Access to Health Care

Examples of efforts in partnership with DOC:

- Coordinate appointments for patients to reduce repeated production
- Prioritize patients across services and facilities to ensure efficient and reasonable daily lists
- Extending operations of the CHS Health Triage line, which handles approximately 40% of calls administratively, to include holiday weekdays



Improving Access to Health Care

- Focused building-level coordination to address production concerns
- Continue to explore opportunities to better align service delivery with staff availability
- Continue to implement initiatives such as expanding telehealth to help increase access



Sample Daily Production Requests

- Nursing services such as DOT, wound care, and diabetic care - 45%
- Sick call – 15%
- Off-island specialty – 9%
- Routine medical follow-up – 6%
- Mental health follow-up 4%
- Remaining – dental, on-island specialty, substance use, discharge planning.

