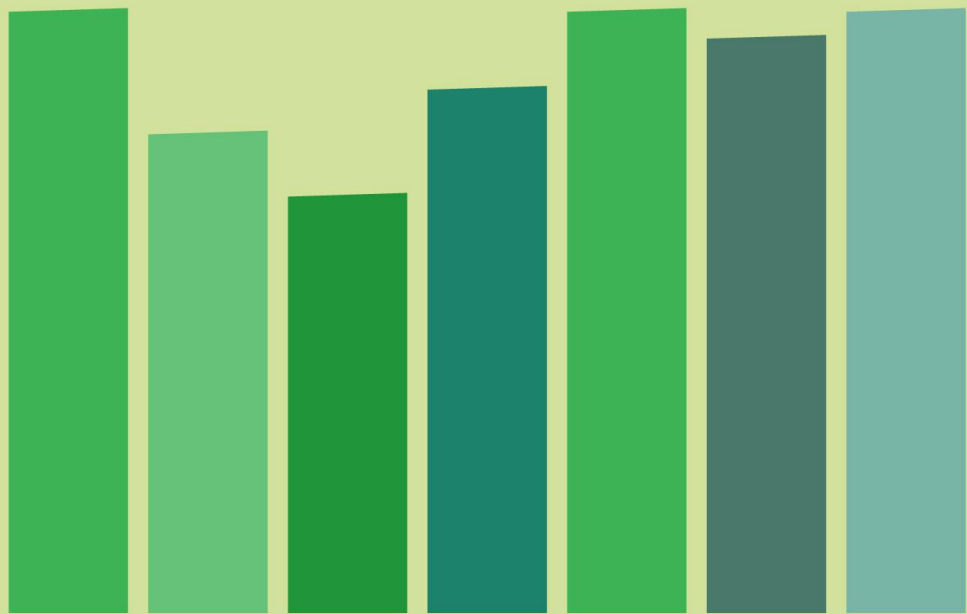


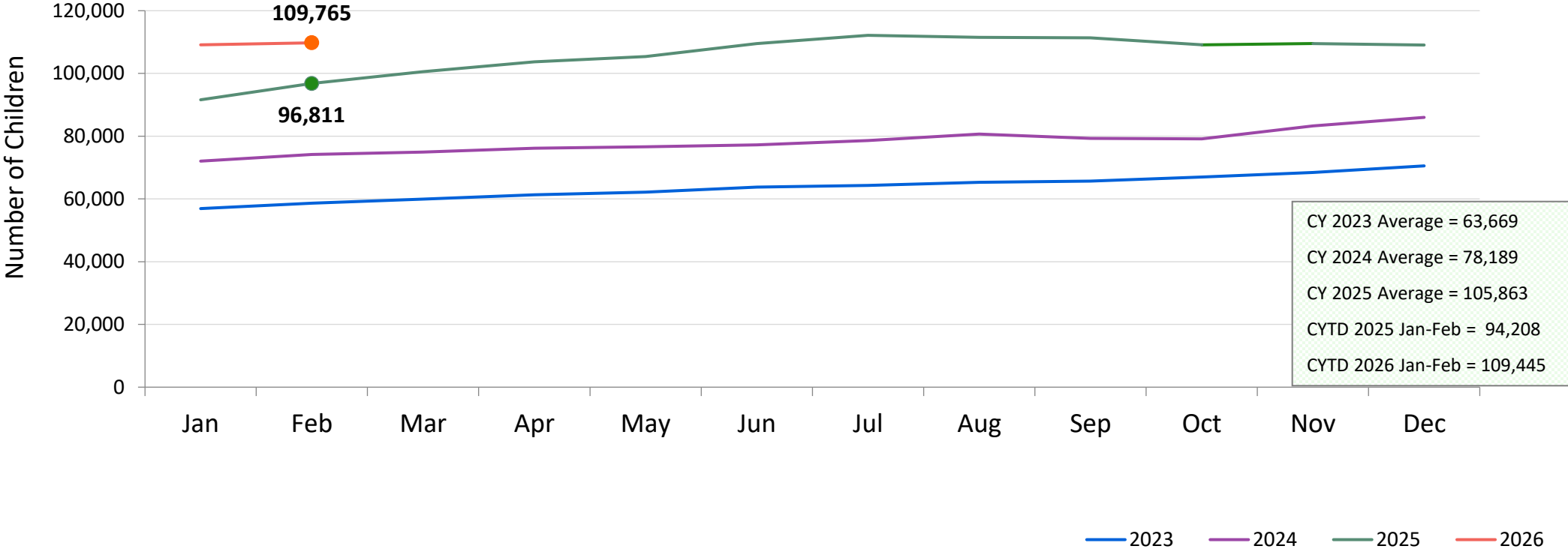
Flash Report



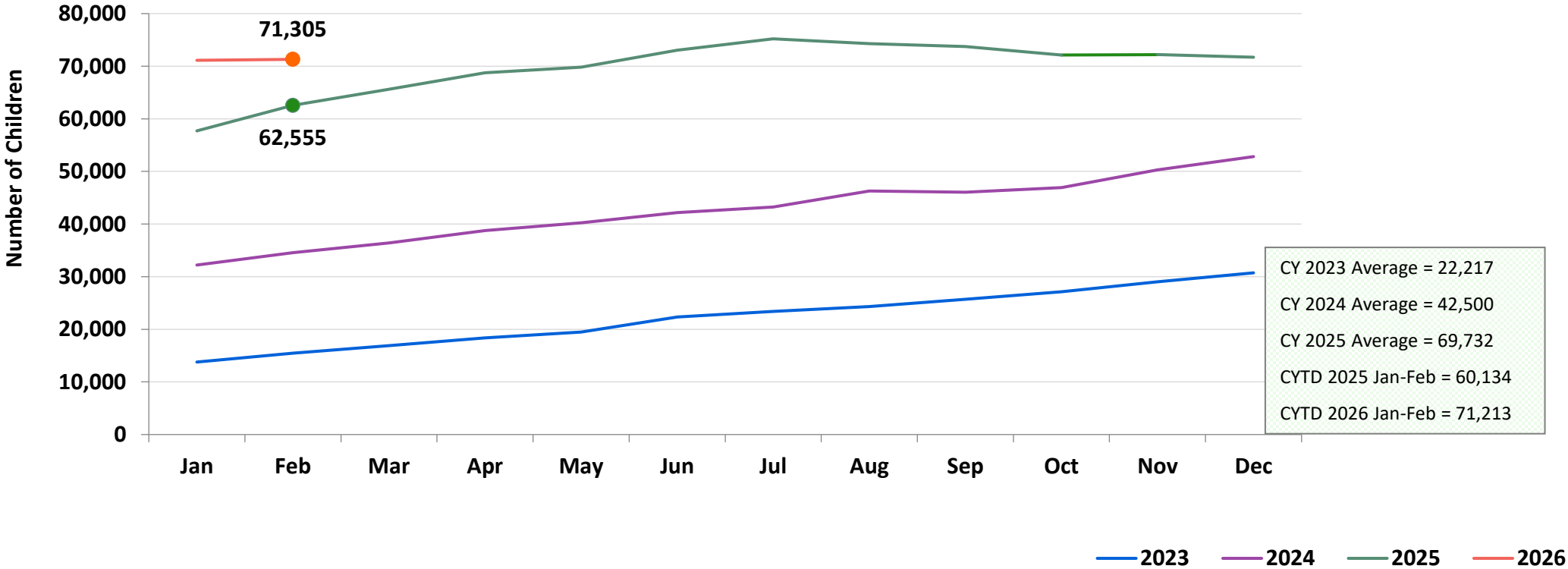
monthly indicators
March 2026



Children Using Vouchers for Child Care January 2023 – February 2026 (End of Month)

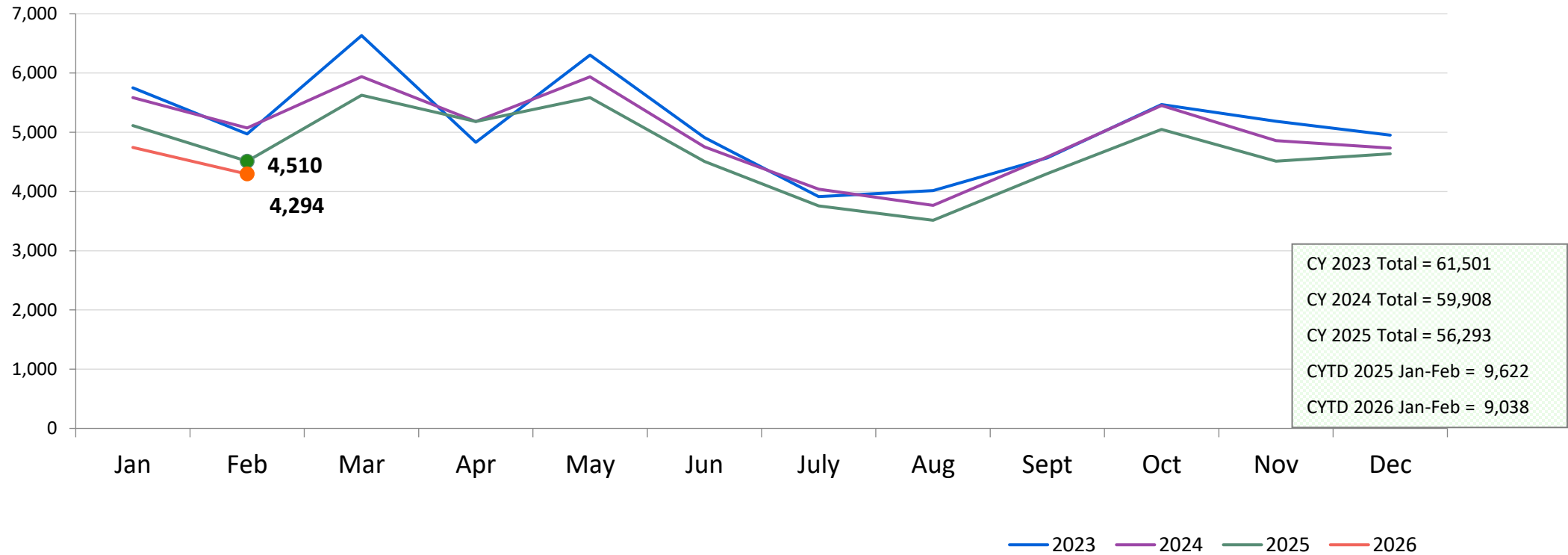


Children Using ACS-Issued Low-Income Child Care Vouchers* January 2023 – February 2026 (End of Month)



*This represents the subset of enrollments in child care with ACS-issued low-income vouchers funded by the NY State Child Care Block Grant (CCBG).

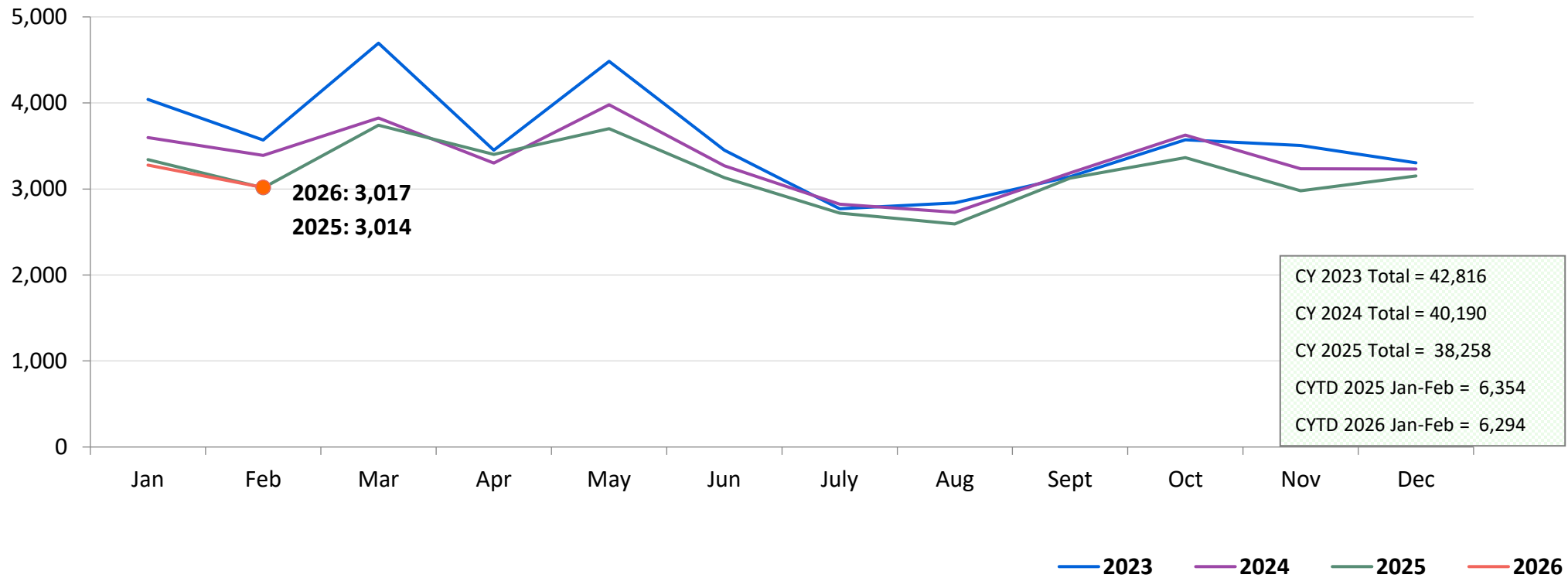
SCR Intakes January 2023 – February 2026



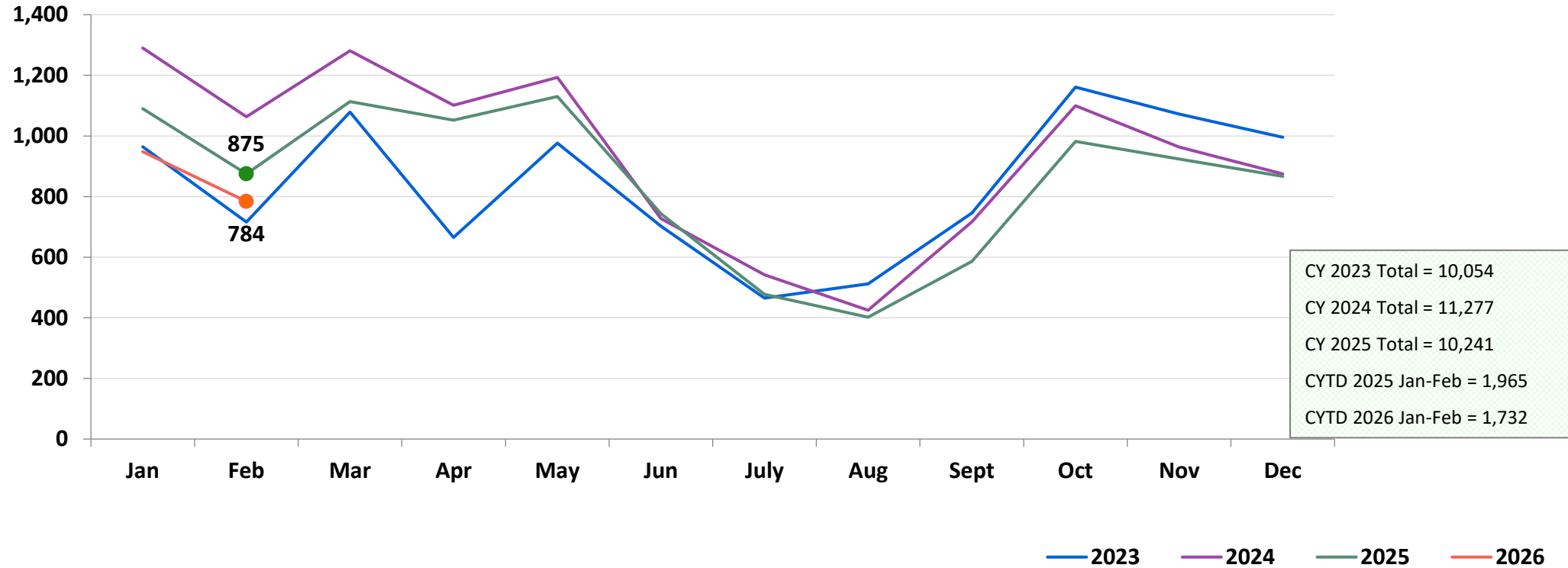
Note: SCR intakes can be followed by investigation or Collaborative Assessment Response and Support (CARES).

See Pages 31 through 34 of the Appendix for supporting data.

Consolidated Investigations January 2023 – February 2026

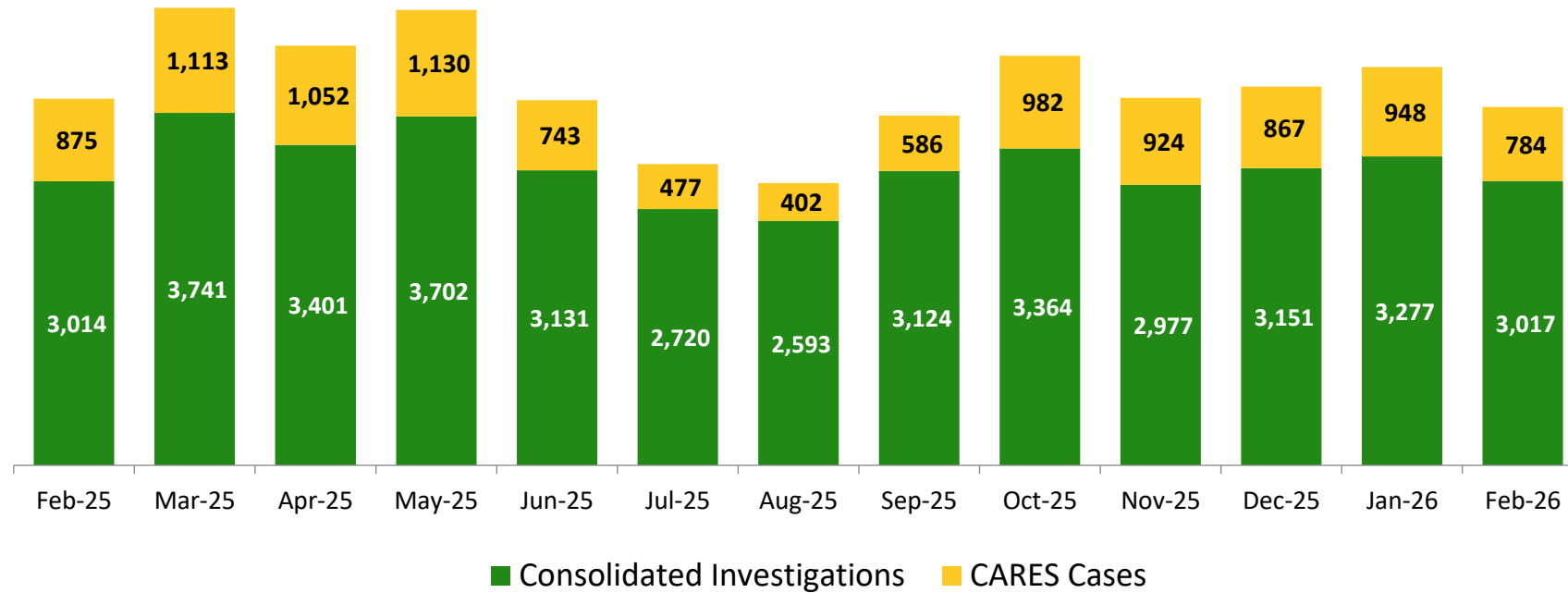


CARES* Cases January 2023 – February 2026



*CARES (Collaborative Assessment, Response, Engagement and Support, formerly known as FAR) is an alternative Child Protective response to some reports of child maltreatment. CARES does not require an investigation and determination of allegations and individual culpability for families reported to the SCR. It is an alternative approach to providing protection to children by engaging families in an assessment of child safety and of family needs, in finding solutions to family problems and in identifying informal and formal supports to meet their needs and increase their ability to care for their children.

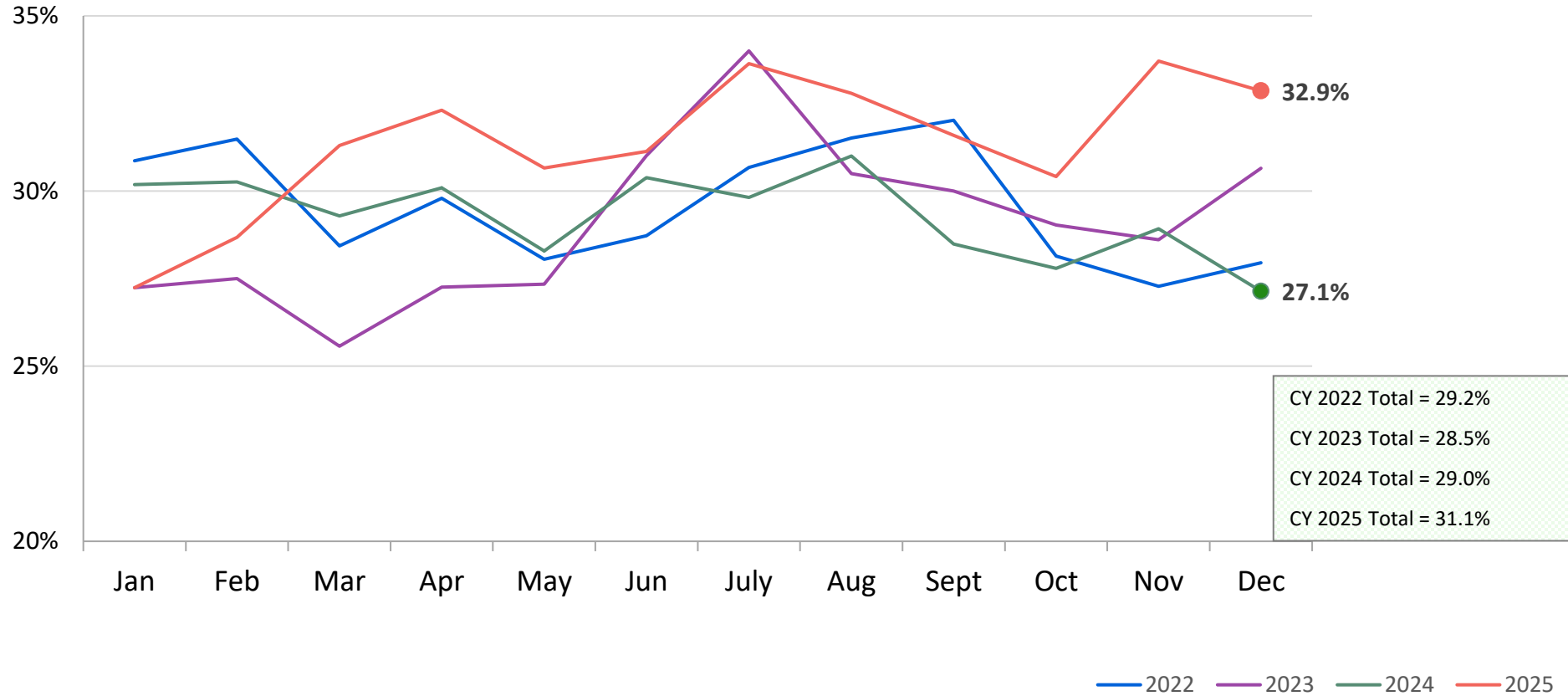
Protective Diagnostic Cases (Consolidated Investigations and CARES) February 2025 – February 2026



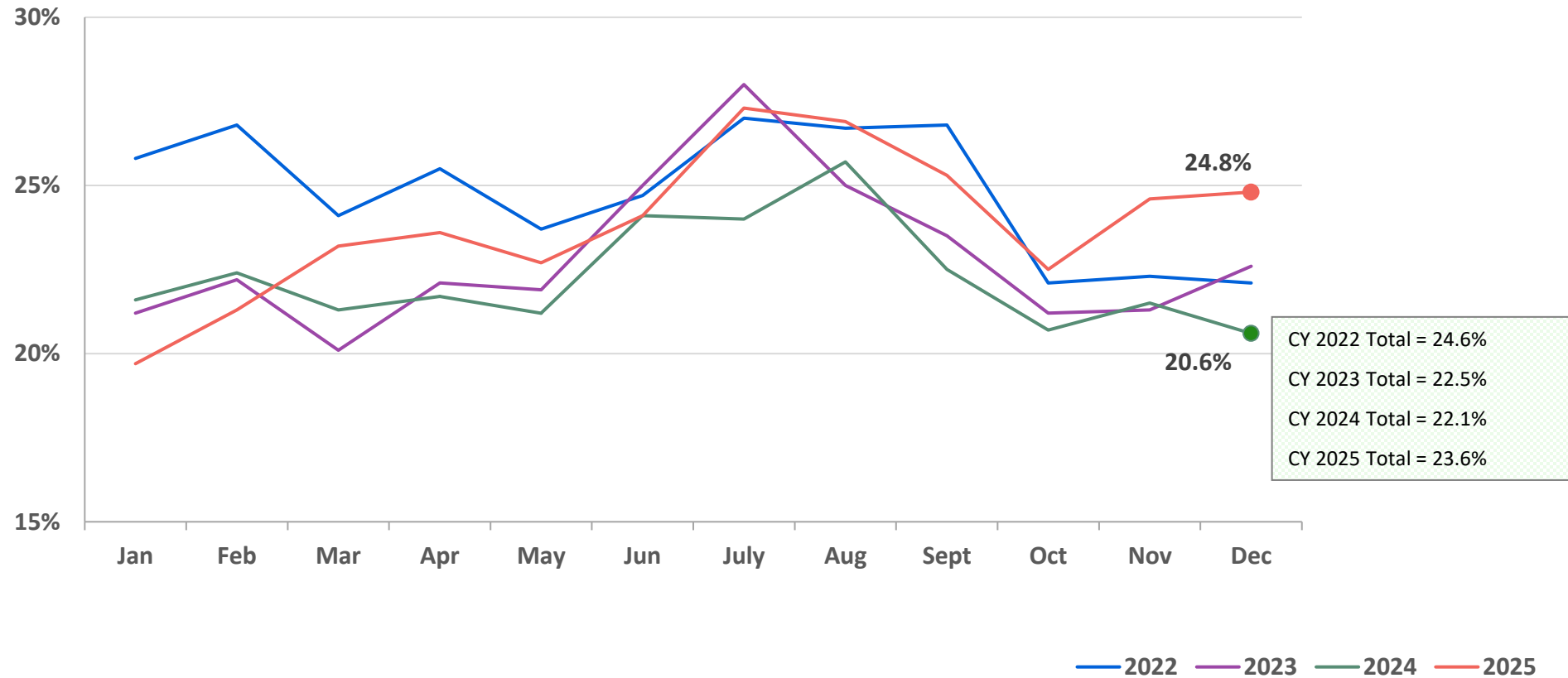
	CYTD Jan-Feb 2025	CYTD Jan-Feb 2026
CARES Cases	1,965	1,732
Consolidated Investigations	6,354	6,294

	Feb 2025	Mar 2025	Apr 2025	May 2025	Jun 2025	Jul 2025	Aug 2025	Sep 2025	Oct 2025	Nov 2025	Dec 2025	Jan 2026	Feb 2026	CYTD Jan-Feb 2025	CYTD Jan-Feb 2026
Number of Investigations & CARES cases	3,889	4,854	4,453	4,832	3,874	3,197	2,995	3,710	4,346	3,901	4,018	4,225	3,801	8,319	8,026

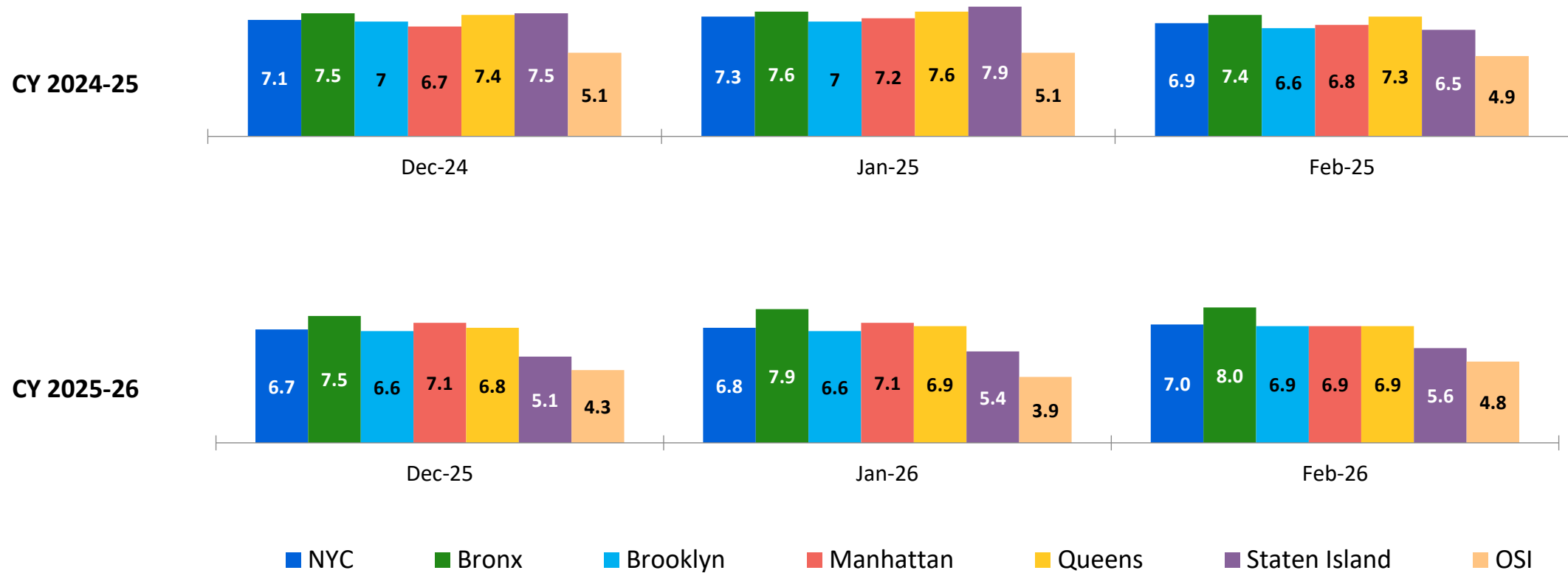
Investigation Indication Rate January 2022 – December 2025



Percent of Protective Diagnostic Cases (Consolidated Investigations and CARES) with Indicated Investigations, January 2022 – December 2025

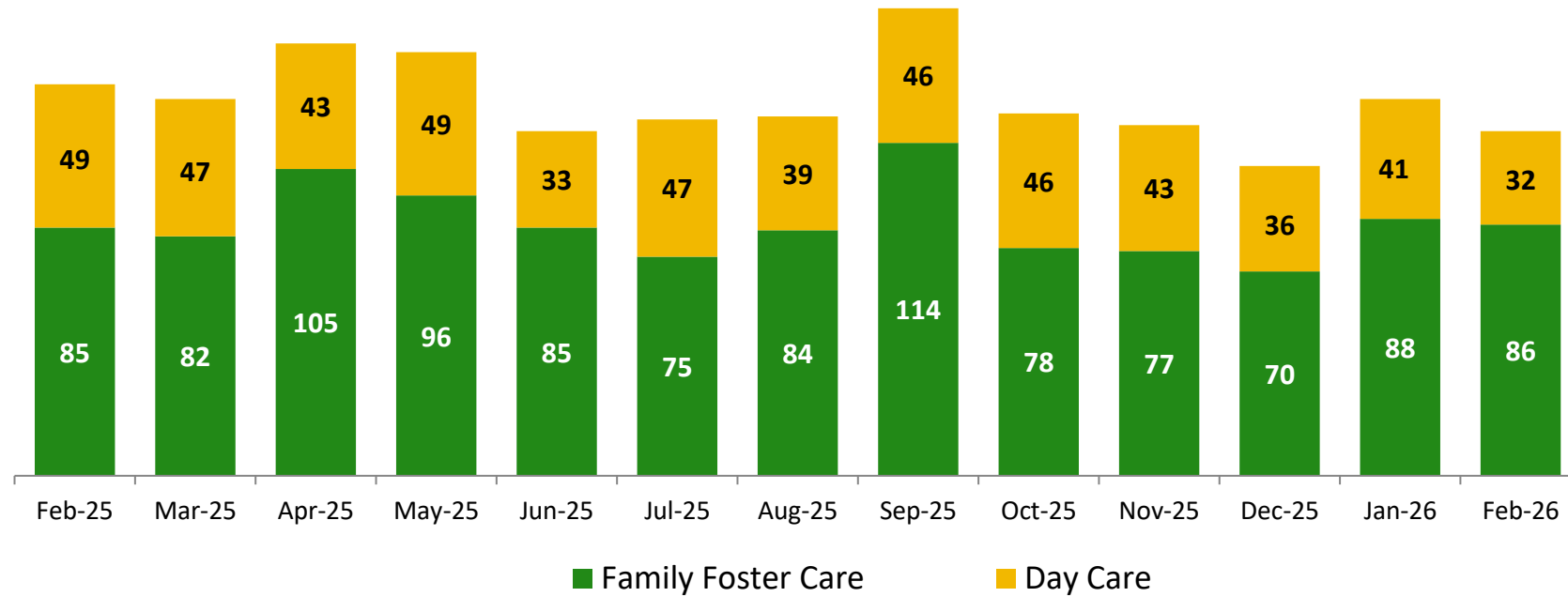


Average Child Protection Caseload* December 2024 – February 2025 and December 2025 – February 2026



*includes all caseload carrying Child Protection Specialists (CPS) in investigative and CARES Units in Primary and Case Manager roles.

OSI Family Foster Care and Day Care* Investigations February 2025 – February 2026



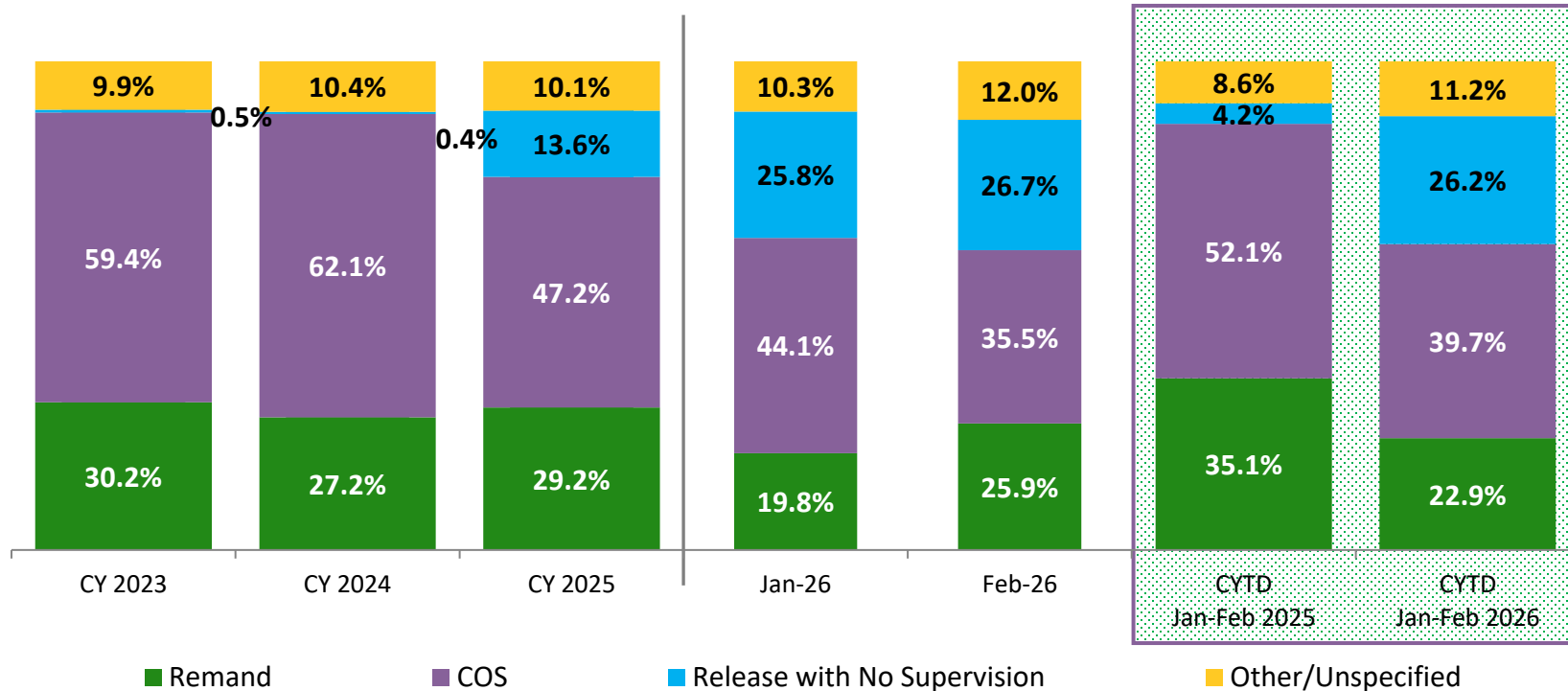
Calendar-Year-to-Date

CYTD Jan-Feb 2025	CYTD Jan-Feb 2026
101	73
172	174

	Feb 2025	Mar 2025	Apr 2025	May 2025	Jun 2025	Jul 2025	Aug 2025	Sep 2025	Oct 2025	Nov 2025	Dec 2025	Jan 2026	Feb 2026	CYTD Jan-Feb 2025	CYTD Jan-Feb 2026
Number of Investigations	134	129	148	145	118	122	123	160	124	120	106	129	118	273	247

*Day Care investigations include alleged abuse or maltreatment of children perpetrated by someone who cares for children in a setting that is not the child’s familial home and that requires state or local government approval and is subject to state laws, regulations, and oversight. This includes, but is not limited to, ACS/NYC PS Early Care and Education programs. Foster care investigations include alleged abuse or maltreatment of children in foster care, either in their foster home or during visits or trial discharge with their families; and alleged abuse or maltreatment of the children of foster parents.

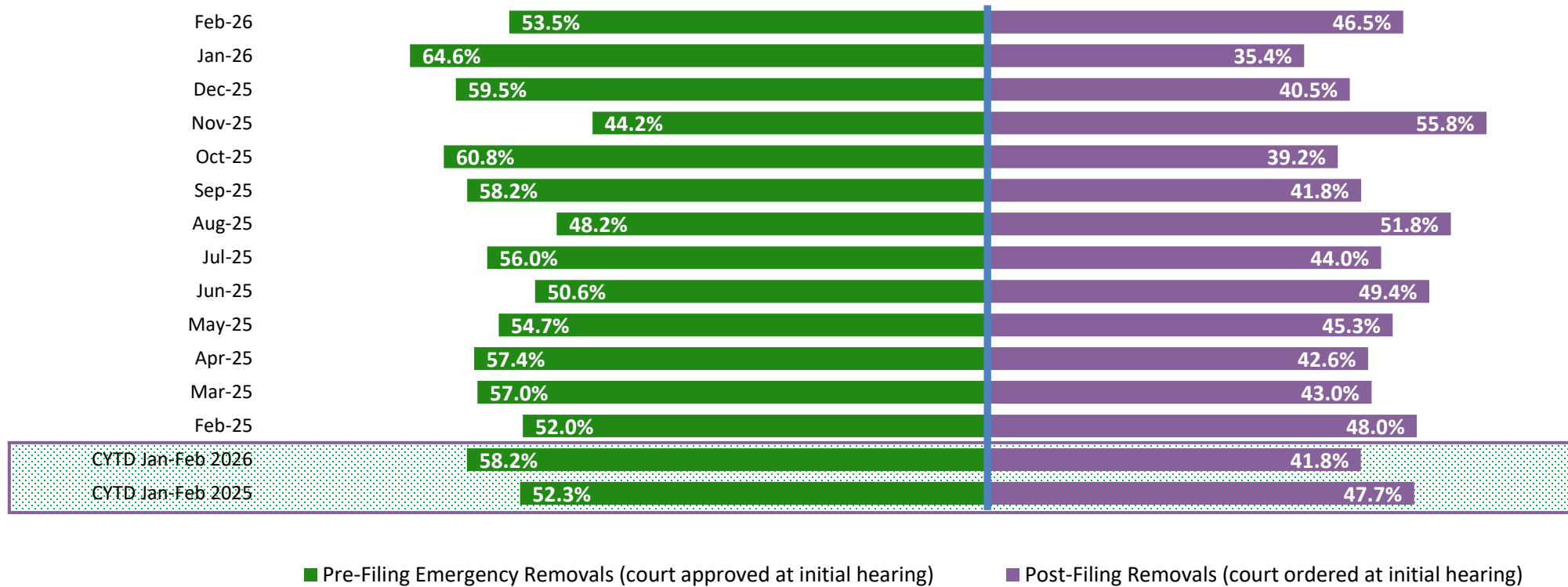
Article 10 Filings and Initial Hearing Outcomes, Children CY 2023 – February 2026



	CY 2023	CY 2024	CY 2025	Jan 2026	Feb 2026	CYTD Jan-Feb 2025	CYTD Jan-Feb 2026
Children with Article 10 Filings	6,744	7,149	5,948	485	499	753	984

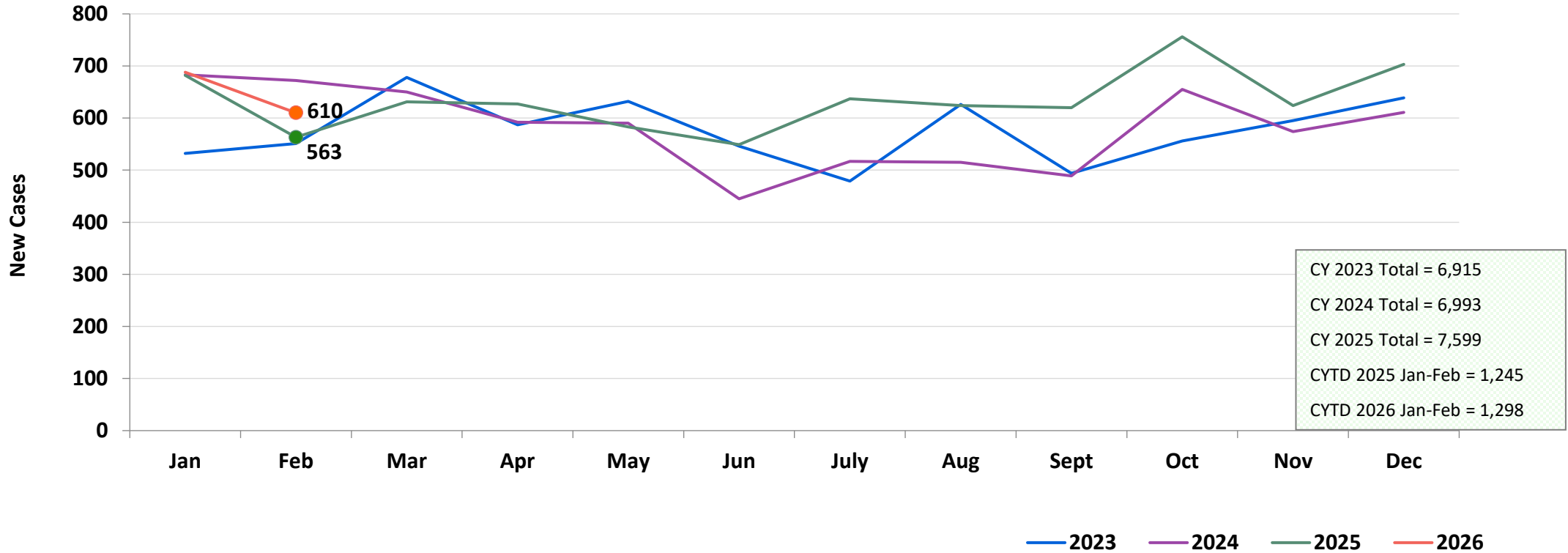
Notes: 1)The category “Other/Unspecified” includes no outcome specified; no order issued. Beginning with the August 2025 Flash, revised data include outcomes of hearings continued at the initial hearing. Due to data entry lags, many filings categorized as “Other/Unspecified” in recent months will be re-categorized in future Flash reports. 2)Most releases of children with no supervision are to non-respondent. A small number of these releases are to respondents.

Remands Approved at Initial Article 10 Hearing by Removal Status February 2025 – February 2026



	Feb 2025	Mar 2025	Apr 2025	May 2025	Jun 2025	Jul 2025	Aug 2025	Sep 2025	Oct 2025	Nov 2025	Dec 2025	Jan 2026	Feb 2026	CYTD Jan-Feb 2025	CYTD Jan-Feb 2026
Children Remanded	127	142	155	150	170	134	137	134	171	129	148	96	129	264	225

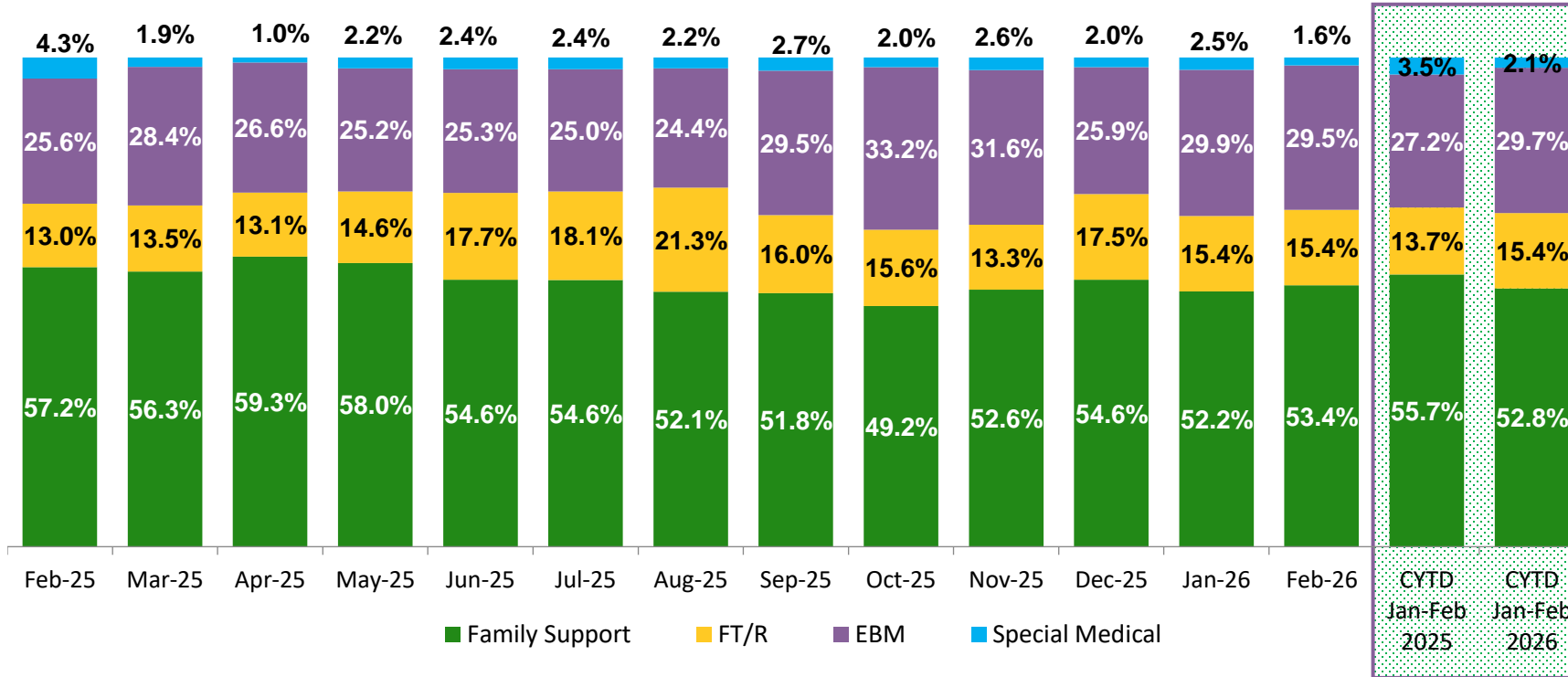
New Child Welfare Prevention Cases January 2023 – February 2026



*New prevention cases do not include cases transferred from one preventive program to another.

See Pages 35 and 36 of the Appendix for supporting data.

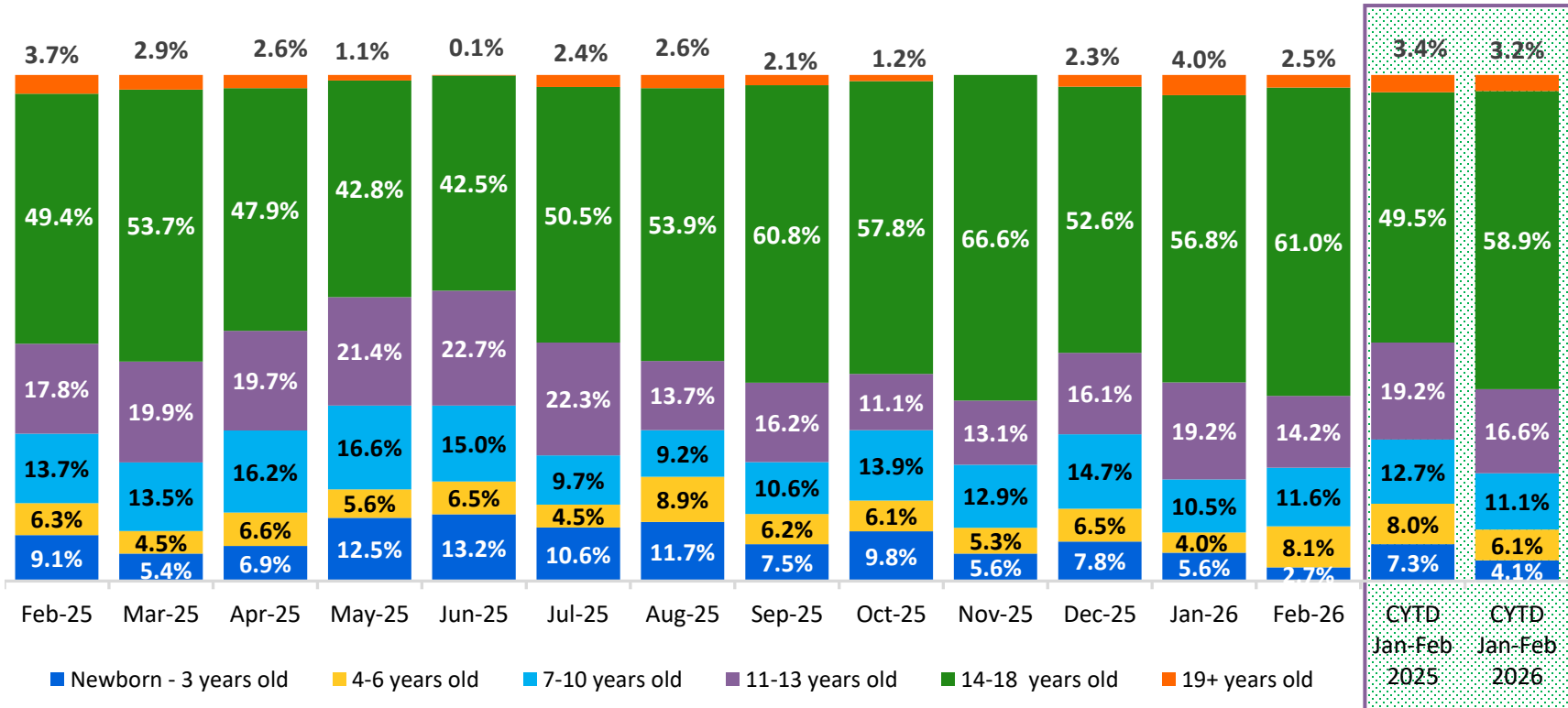
New Child Welfare Prevention Cases by Program Type* February 2025 – February 2026



	Feb 2025	Mar 2025	Apr 2025	May 2025	Jun 2025	Jul 2025	Aug 2025	Sep 2025	Oct 2025	Nov 2025	Dec 2025	Jan 2026	Feb 2026	CYTD Jan-Feb 2025	CYTD Jan-Feb 2026
Number of New Preventive Cases	563	631	627	583	549	637	624	620	756	624	703	688	610	1,245	1,298

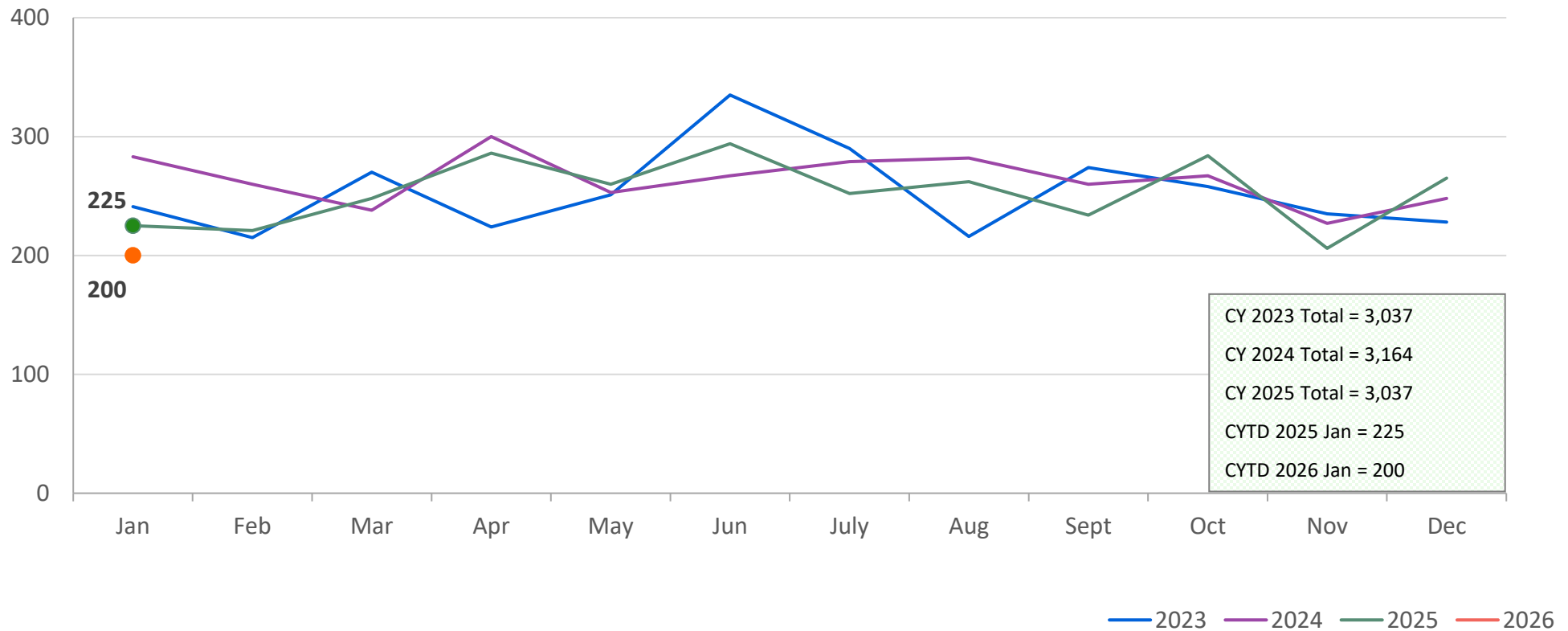
* New prevention cases do not include cases transferred from one prevention program to another.

Average Daily Children's Center Population February 2025 – February 2026

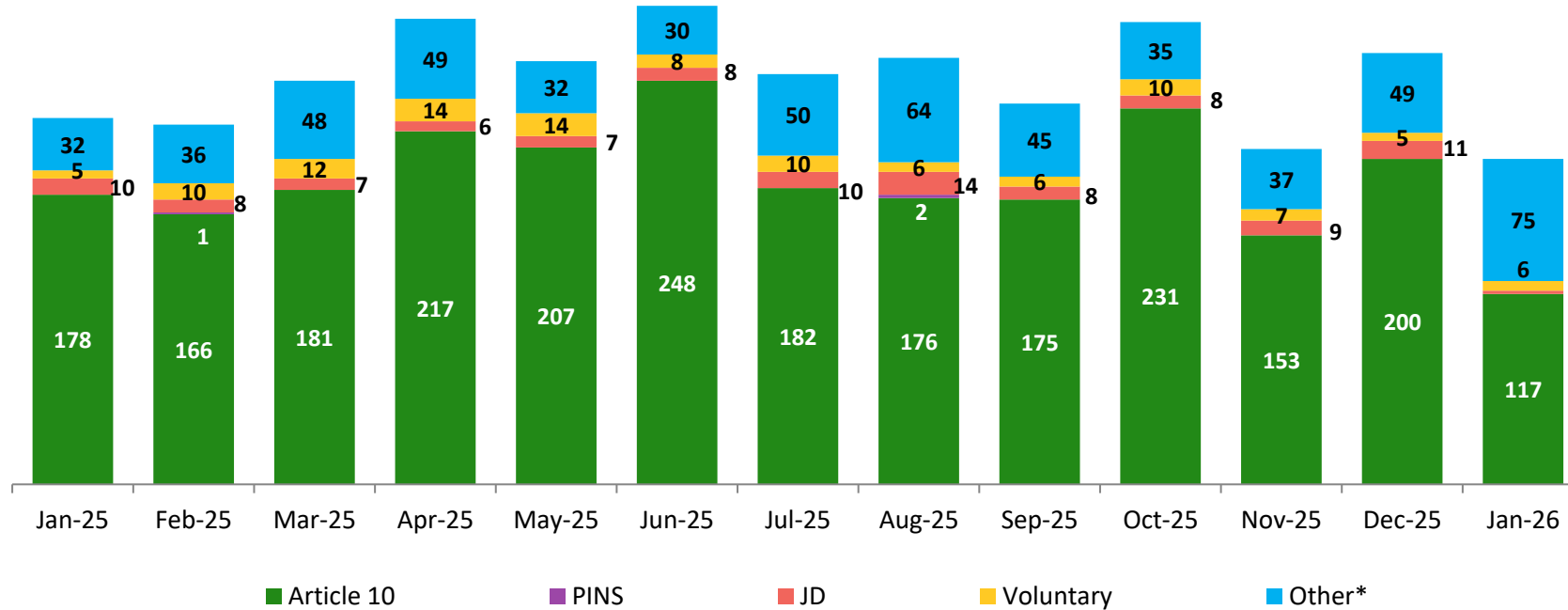


	Feb 2025	Mar 2025	Apr 2025	May 2025	Jun 2025	Jul 2025	Aug 2025	Sep 2025	Oct 2025	Nov 2025	Dec 2025	Jan 2026	Feb 2026	CYTD Jan-Feb 2025 Average	CYTD Jan-Feb 2026 Average
Average Number of Children	57	62	64	70	76	69	61	56	55	39	46	44	46	65	45

New Placements of Children into Foster Care January 2023 – January 2026



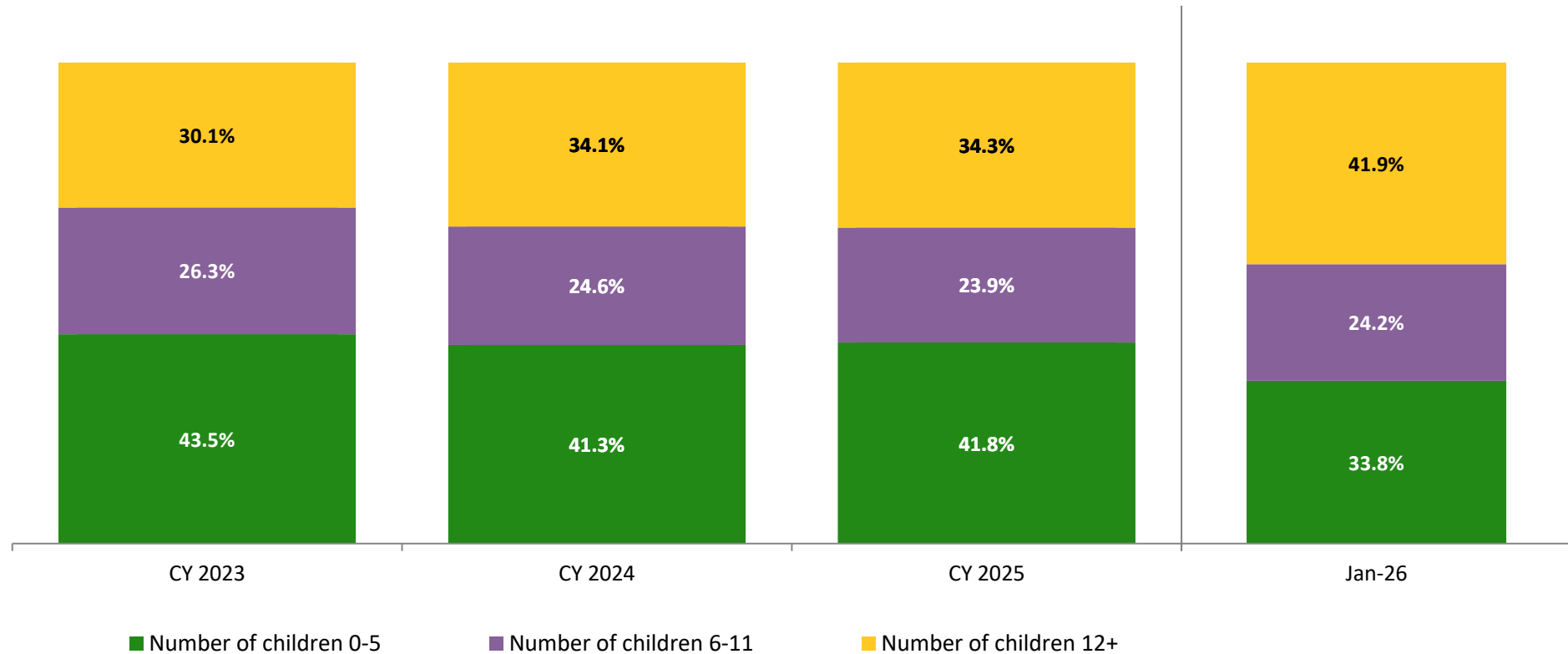
Reason for New Placements of Children into Foster Care January 2025 – January 2026



	Jan 2025	Feb 2025	Mar 2025	Apr 2025	May 2025	Jun 2025	Jul 2025	Aug 2025	Sep 2025	Oct 2025	Nov 2025	Dec 2025	Jan 2026
Number of Placements	225	221	248	286	260	294	252	262	234	284	206	265	200

*Due to data entry lags, many placements currently categorized as "Other" in recent months will be re-categorized in future Flash reports.

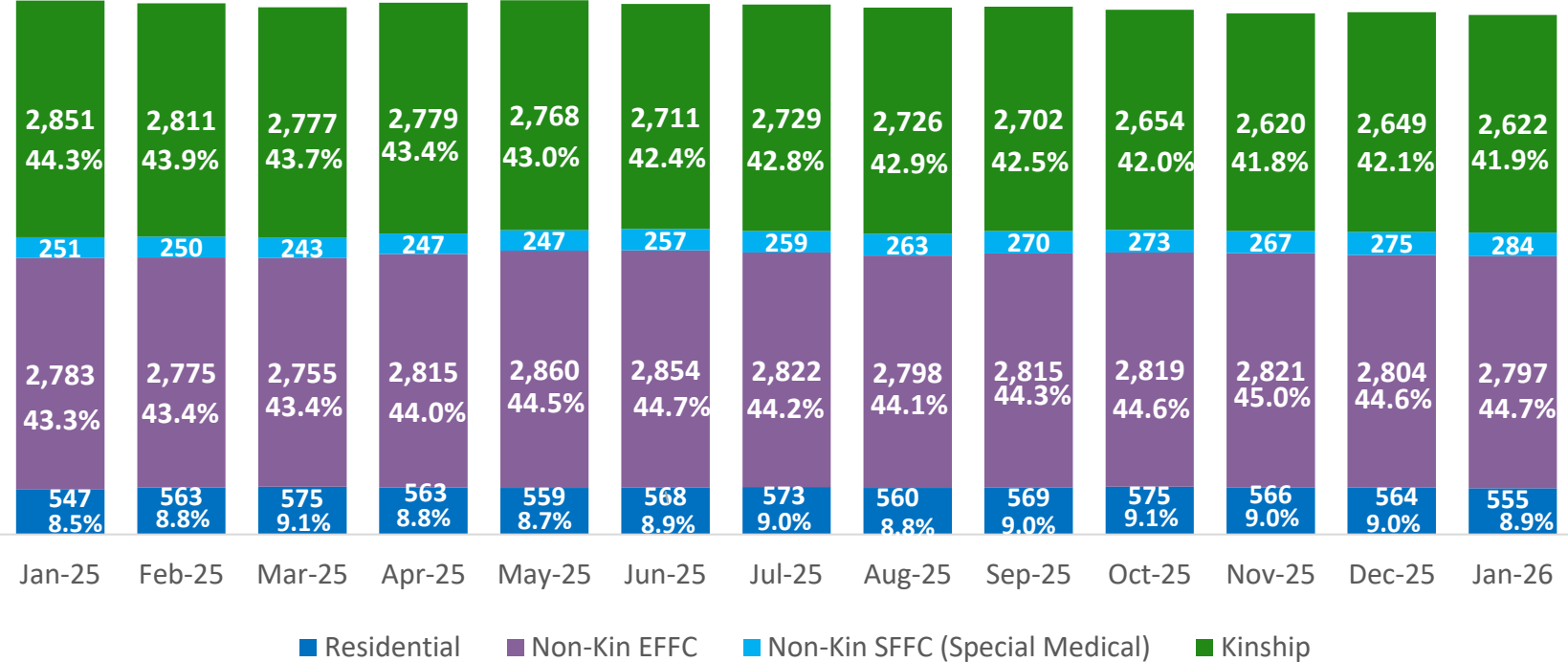
New Placements of Children into Foster Care* by Age CY 2023 – January 2026



	CY 2023	CY 2024	CY 2025	Jan 2026
Number of Placements	2,960	3,072	2,931	198

*Excludes CTH placements.

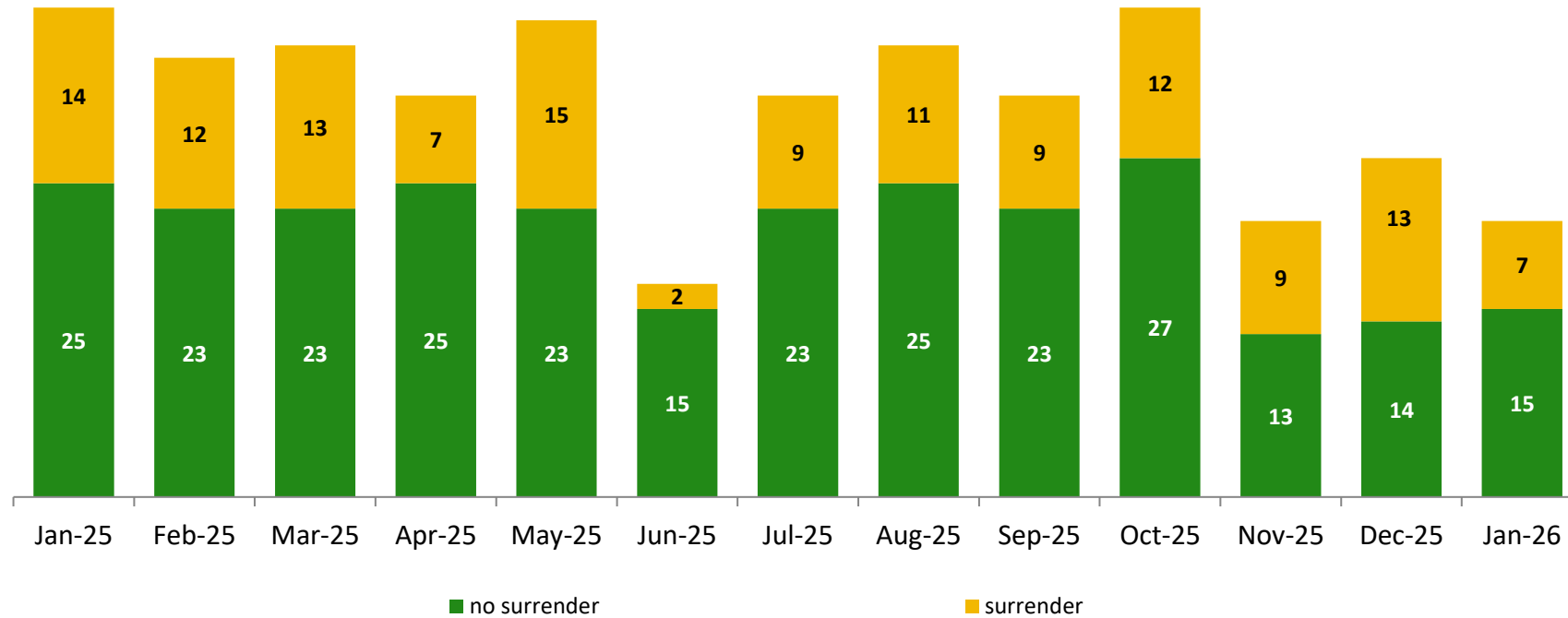
Children in Foster Care* January 2025 – January 2026 (end of month)



	Jan 2025	Feb 2025	Mar 2025	Apr 2025	May 2025	Jun 2025	Jul 2025	Aug 2025	Sep 2025	Oct 2025	Nov 2025	Dec 2025	Jan 2026
Number in Foster Care	6,432	6,399	6,350	6,404	6,434	6,390	6,383	6,347	6,356	6,321	6,274	6,292	6,258

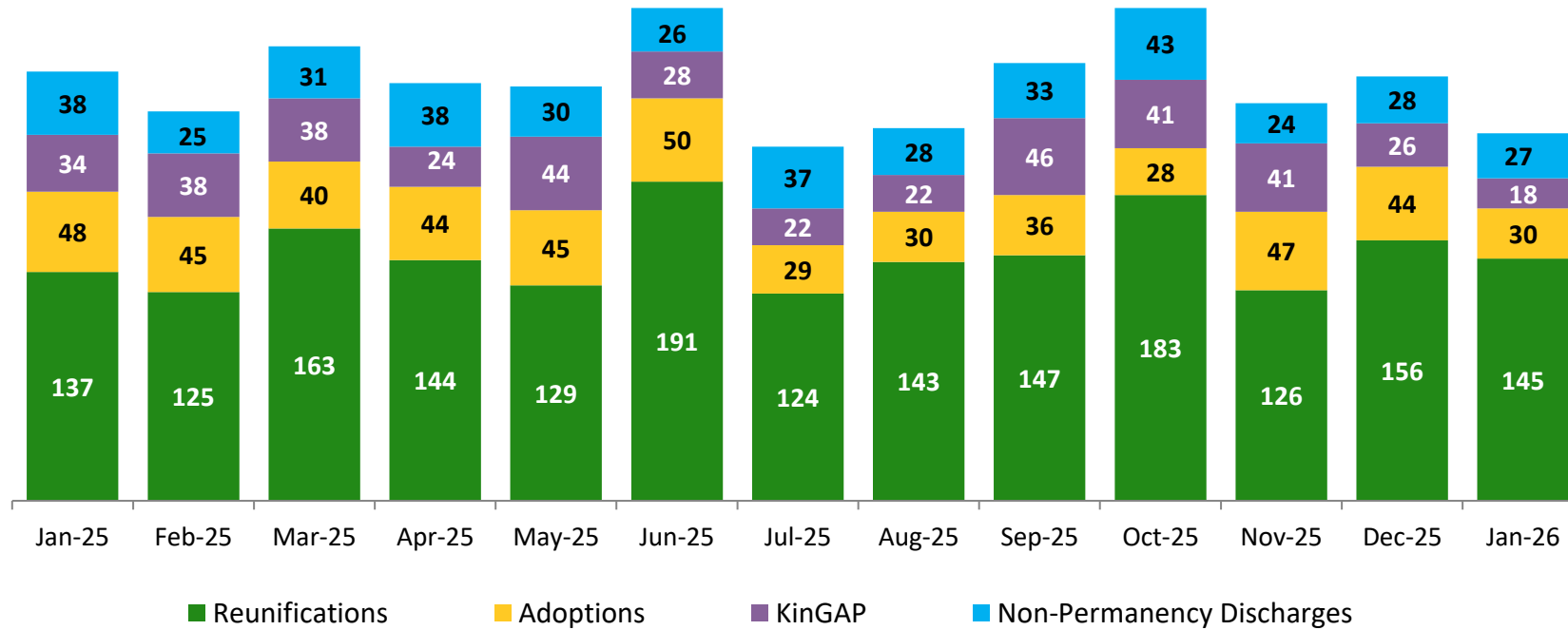
*Excludes CTH placements and includes children in 24-hour care and approximately 60 young children who are living in foster homes or residential care facilities with their mothers who are in foster care (8D children).

Children Freed for Adoption, Surrender by at Least One Parent January 2025 – January 2026



	Jan 2025	Feb 2025	Mar 2025	Apr 2025	May 2025	Jun 2025	Jul 2025	Aug 2025	Sep 2025	Oct 2025	Nov 2025	Dec 2025	Jan 2026
Number Freed for Adoption	39	35	36	32	38	17	32	36	32	39	22	27	22

Permanency and Non-Permanency* Discharges from Foster Care** January 2025 – January 2026

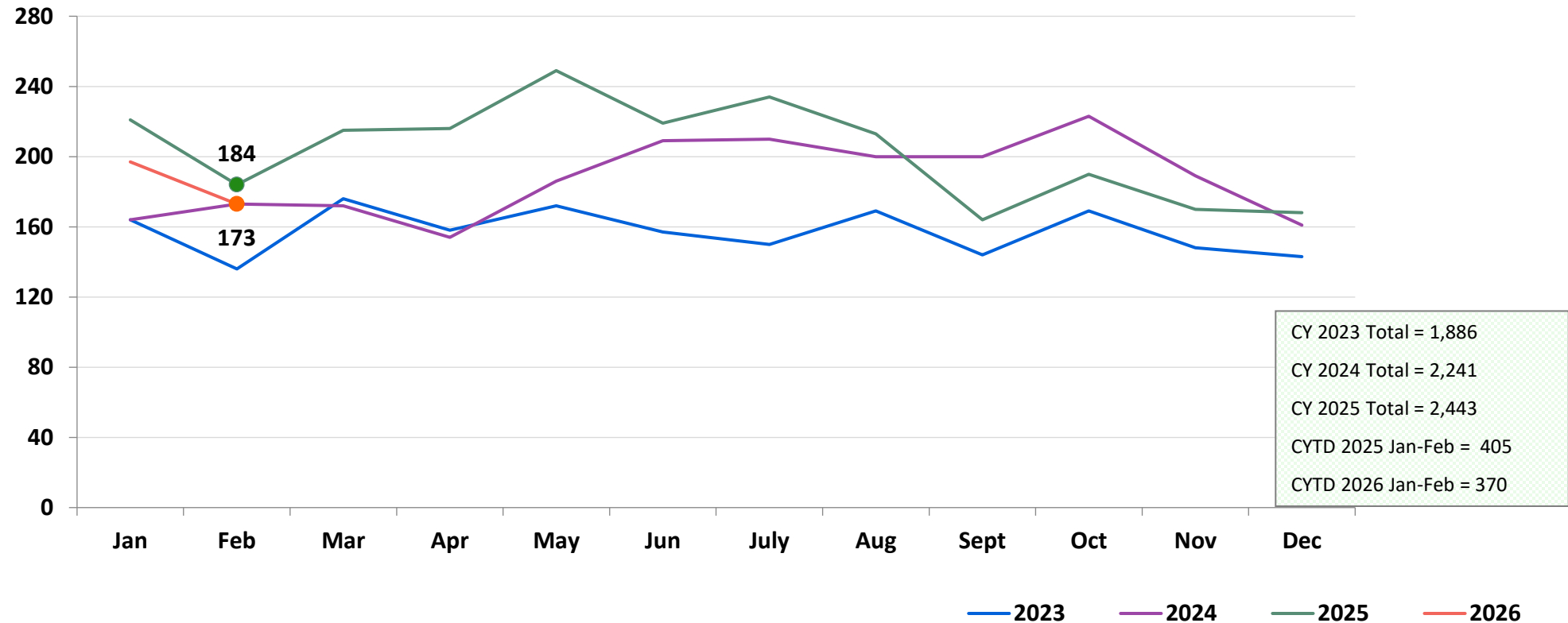


	Jan 2025	Feb 2025	Mar 2025	Apr 2025	May 2025	Jun 2025	Jul 2025	Aug 2025	Sep 2025	Oct 2025	Nov 2025	Dec 2025	Jan 2026
Number of Discharges	257	233	272	250	248	295	212	223	262	295	238	254	220

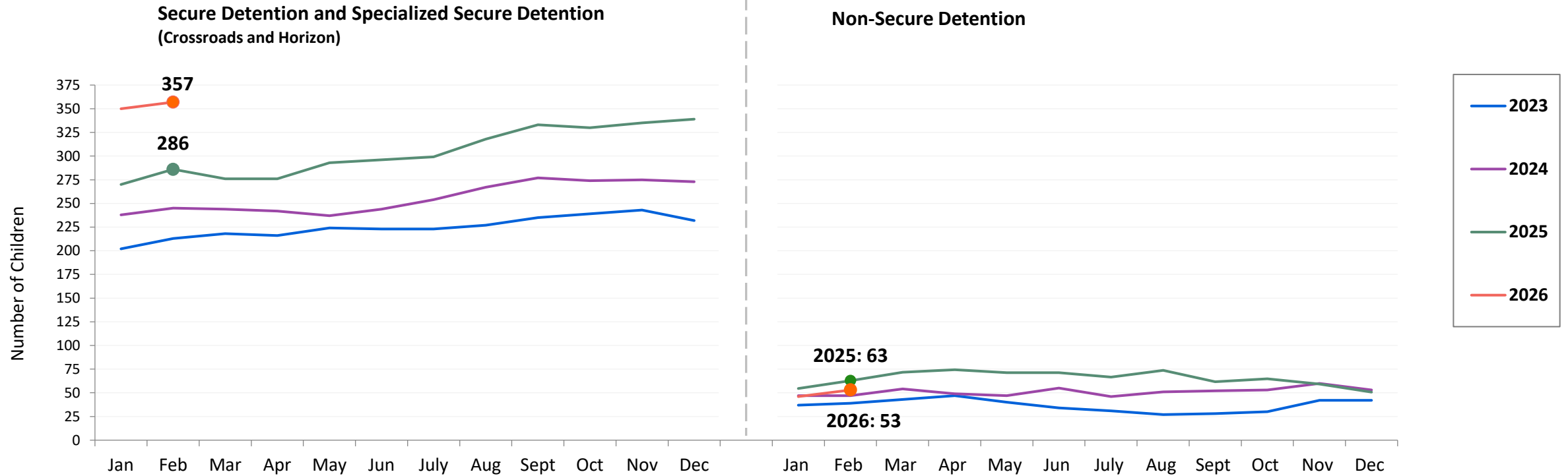
*Non-permanency discharges include AWOL, APPLA (youth 18-20 years old discharged to self and youth who reached 21 while in care), and other discharge destinations such as psychiatric institutions and correctional facilities and discharges with unspecified destinations.

**Excludes discharges of youth from CTH placements.

Total Monthly Admissions to Detention January 2023 – February 2026

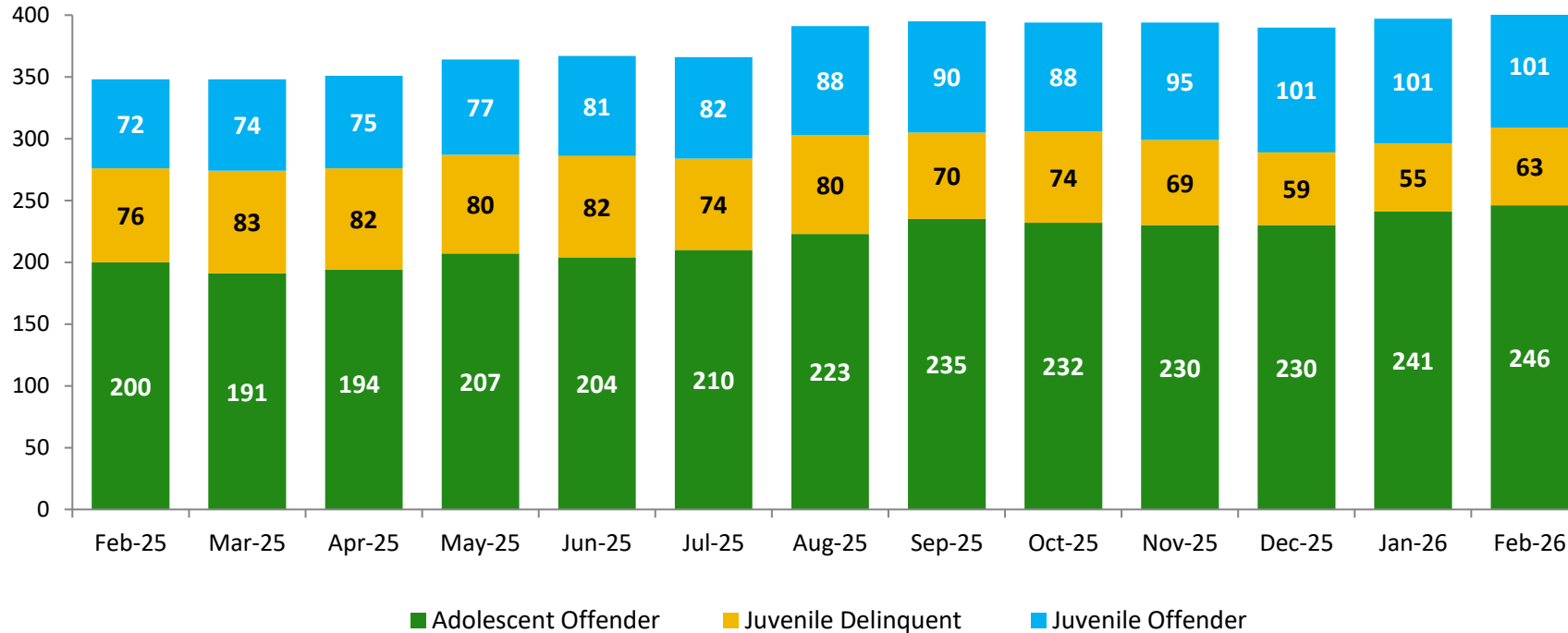


Detention Monthly Average Daily Population January 2023 – February 2026



	CYTD Jan-Feb 2025	CYTD Jan-Feb 2026
Secure Detention and Specialized Secure Detention	277.7	353.7
Non-Secure Detention	58.6	49.6

Detention Total Monthly Average Daily Population by Case Type* February 2025 – February 2026



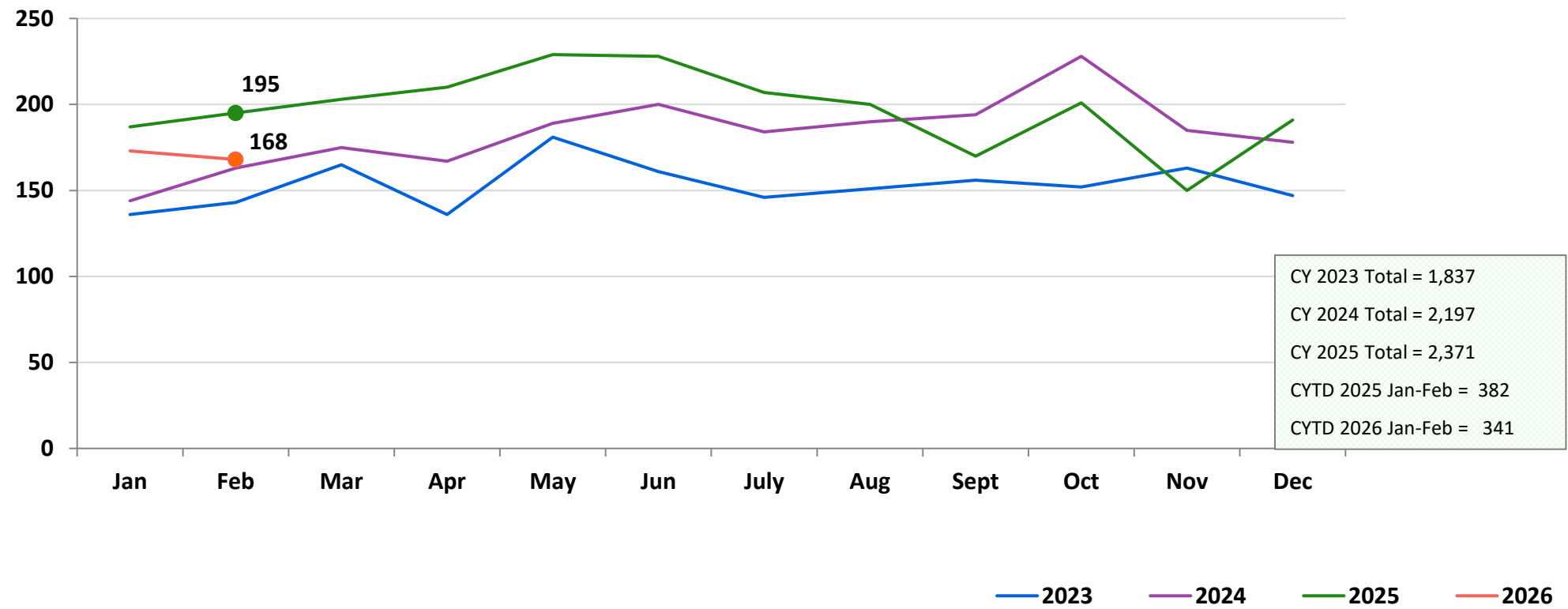
	CYTD Jan-Feb 2025	CYTD Jan-Feb 2026
Juvenile Offender	69.7	101.2
Juvenile Delinquent	69.7	59.3
Adolescent Offender	196.7	243.3

Total Average Daily Population**														
Feb 2025	Mar 2025	Apr 2025	May 2025	Jun 2025	Jul 2025	Aug 2025	Sep 2025	Oct 2025	Nov 2025	Dec 2025	Jan 2026	Feb 2026	CYTD Jan-Feb 2025 Average	CYTD Jan-Feb 2026 Average
348	348	351	364	367	366	392	395	395	394	390	397	410	336.3	403.7

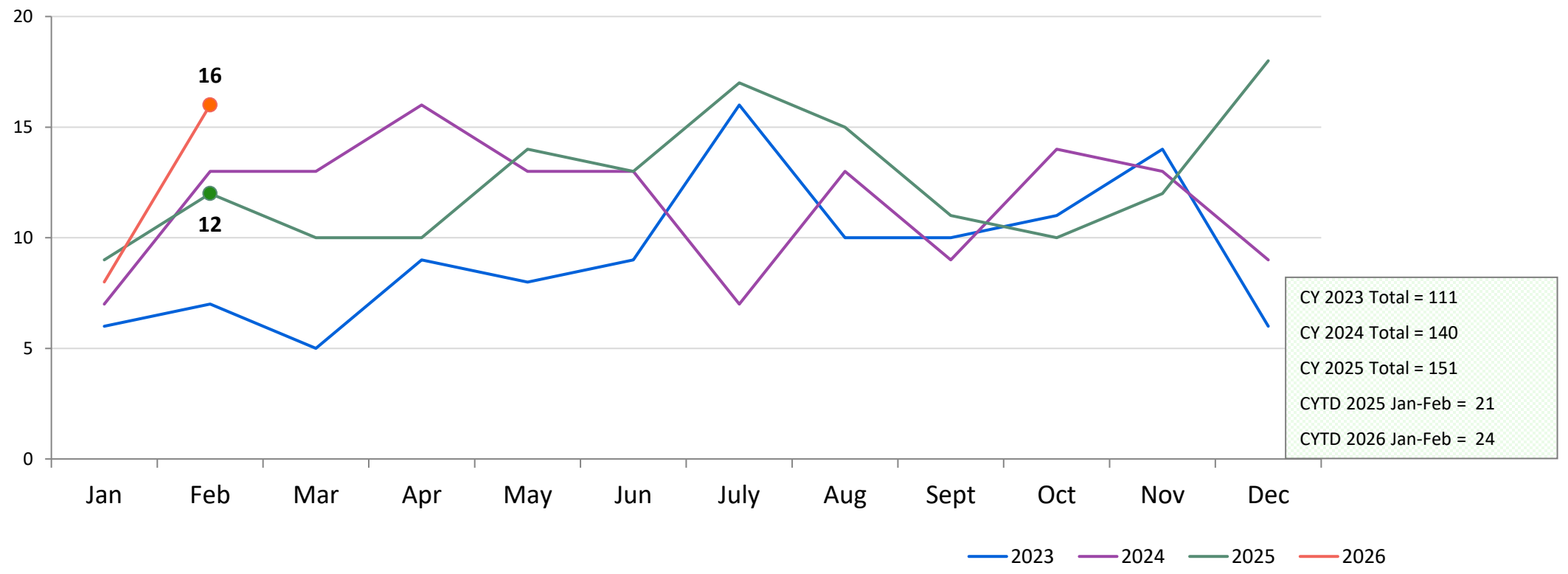
*Case Type definitions: Adolescent Offender (AO) is a person 16 or 17 years of age charged with a felony; Juvenile Delinquent (JD) is a person 7-15 years of age who has committed an act which would be considered a crime if the person were old enough and capable of being treated as an adult. Sixteen- and seventeen-year-olds charged with a misdemeanor are also JDs; Juvenile Offender (JO) a person 13-15 years of age with a serious violent felony charge.

**The total average population includes a small number of youth detained for other authorities and ACS warrants.

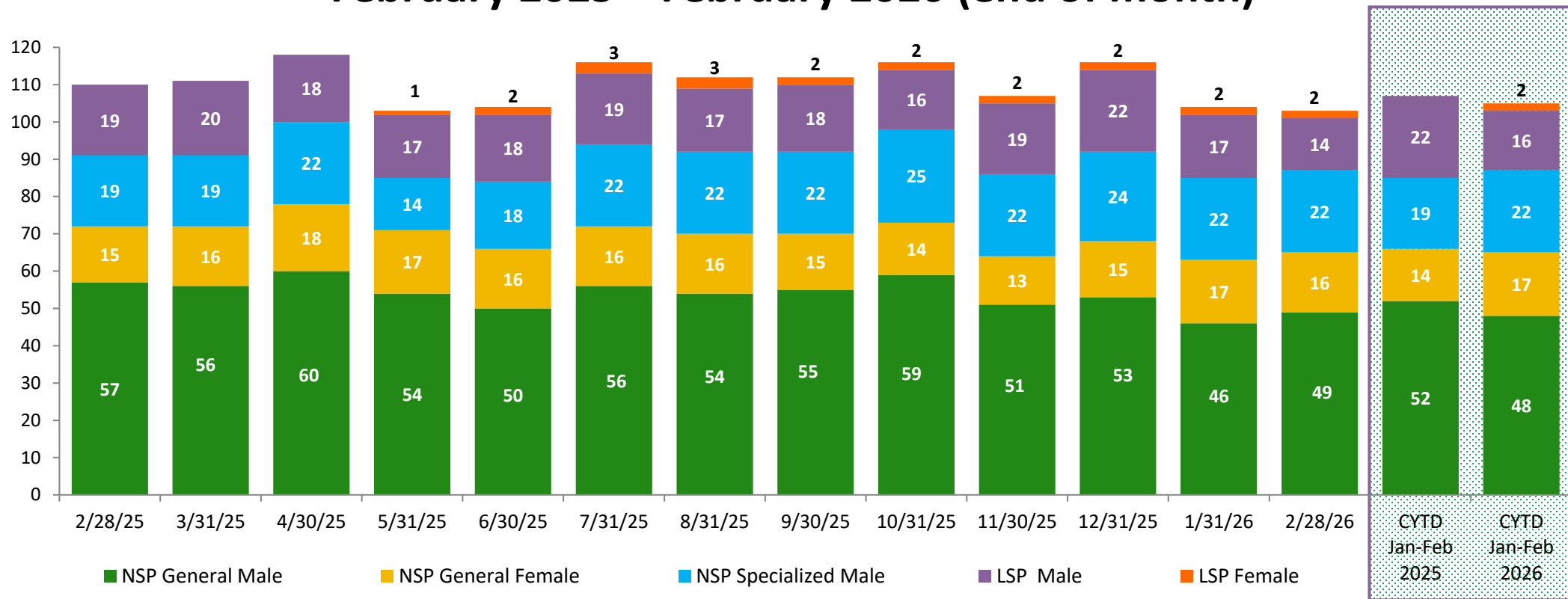
Total Monthly Releases from Detention January 2023 – February 2026



Close to Home Admissions January 2023 – February 2026



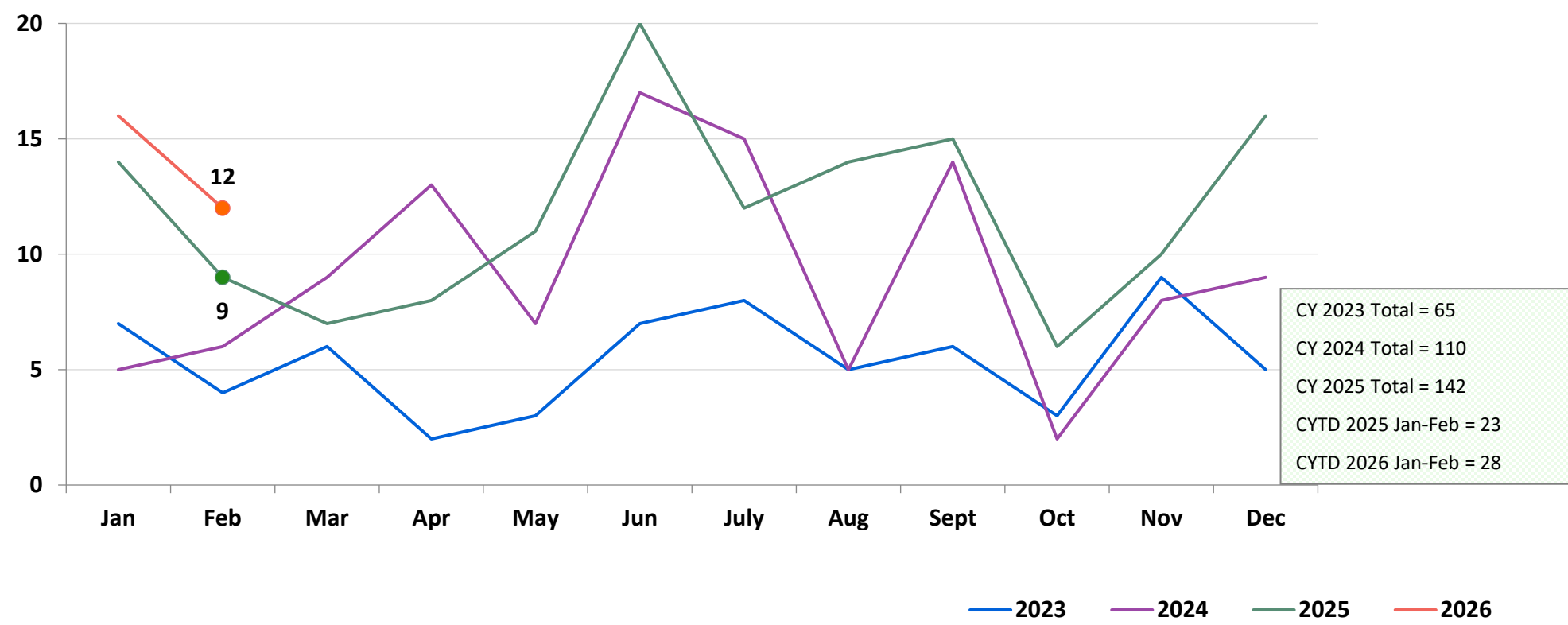
CTH Placement, In 24-hour Care February 2025 – February 2026 (end of month)



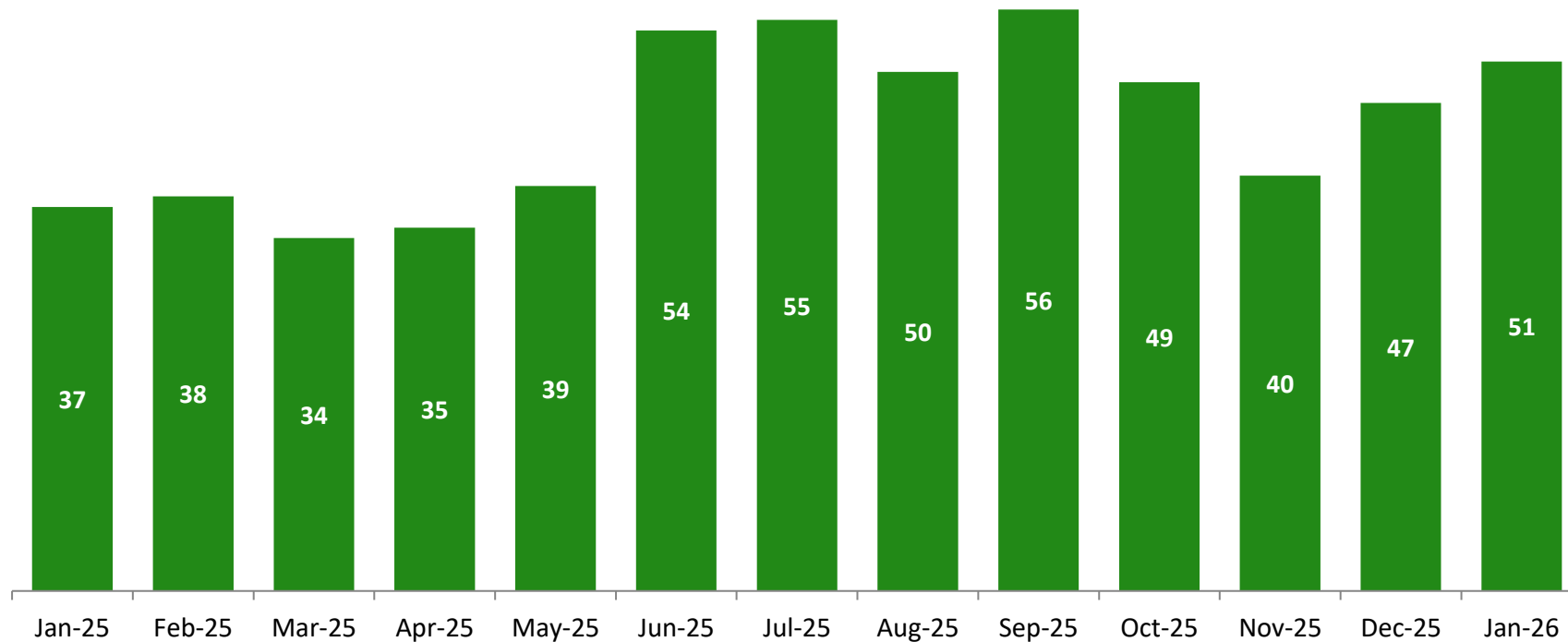
Number in Placement

	2/28/2025	3/31/2025	4/30/2025	5/31/2025	6/30/2025	7/31/2025	8/31/2025	9/30/2025	10/31/2025	11/30/2025	12/31/2025	1/31/2026	2/28/2026	CYTD Jan-Feb 2025 Average	CYTD Jan-Feb 2026 Average
NSP	91	91	100	85	84	94	92	92	98	86	92	85	87	84	86
LSP	19	20	18	17	18	22	20	20	18	21	24	19	16	22	18

Releases from Close to Home Placement to Aftercare January 2023 – February 2026

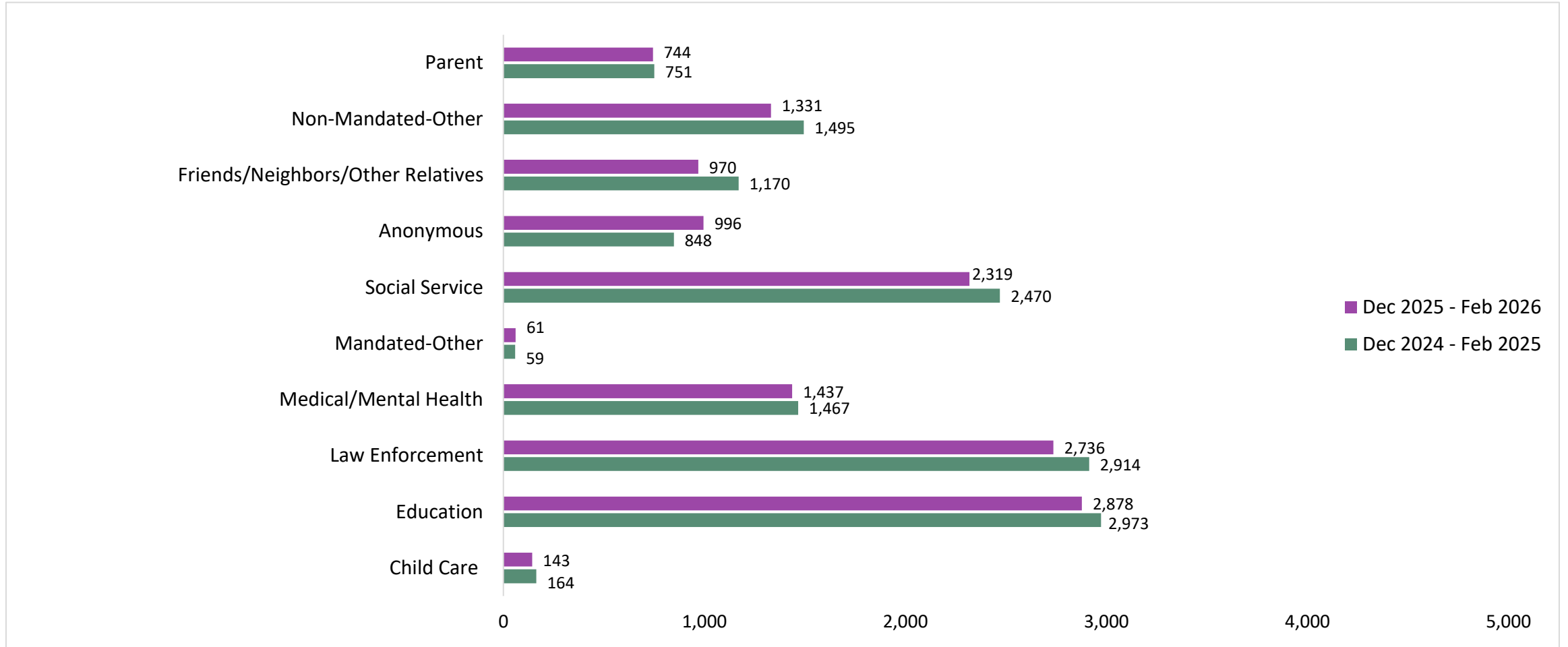


CTH Aftercare Census January 2025 – January 2026

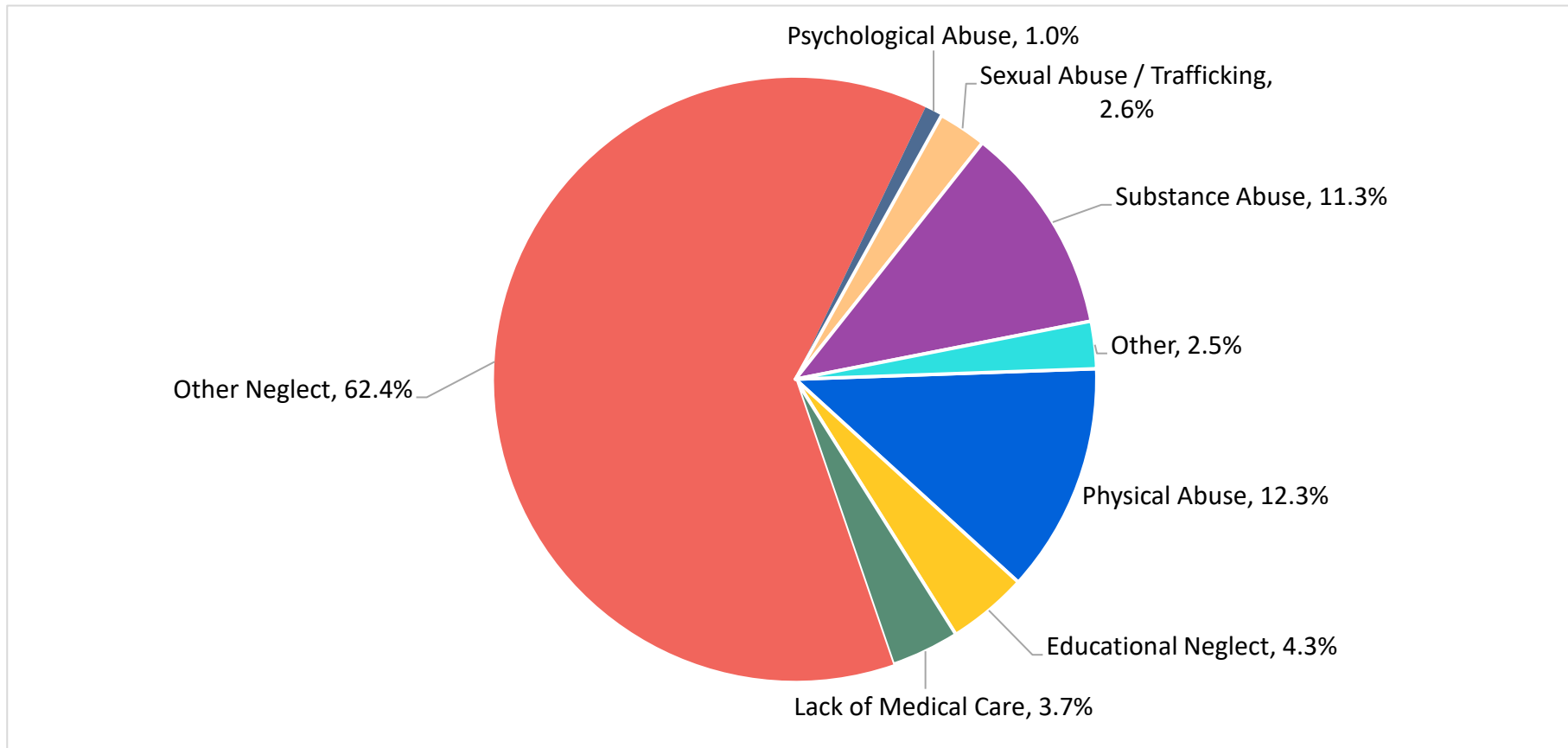


Appendix

**Figure 1: SCR Intakes by Reporter Group
December 2024 – February 2025 and December 2025 – February 2026**



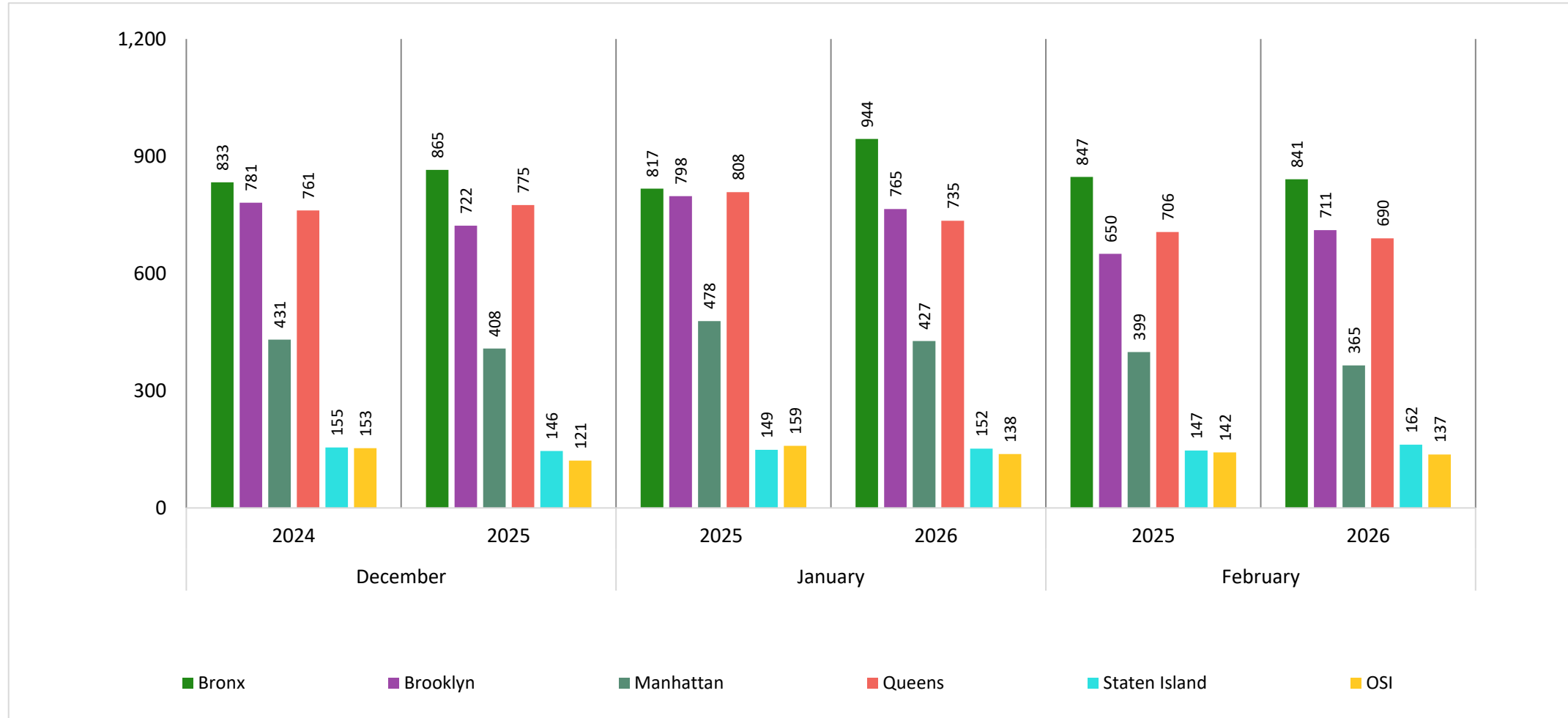
**Figure 2: SCR Allegations in Investigations
December 2025 – February 2026**



Total Allegations = 26,373

Note: Individual investigations often include multiple allegations. Allegations are grouped as follows: Physical Abuse - burn, fatality, fracture, choking, twisting, shaking, excessive corporal punishment, internal injuries, lacerations, bruises, welts, poisoning, noxious substances; Educational Neglect – educational neglect; Lack of Medical Care – lack of medical care; Other Neglect - inadequate guardianship, inadequate food, clothing, shelter, lack of supervision, malnutrition, failure to thrive, swelling, dislocations, sprains; Psychological Abuse - isolation, emotional neglect; Sexual Abuse/Trafficking – sexual abuse, sex trafficking; Substance Abuse - parental drug use, child drug use; and Other -abandonment, inappropriate custodial conduct, labor trafficking.

**Figure 3: SCR Investigations by Borough
December 2024 – February 2025 and December 2025 – February 2026**



**Table 1: SCR Investigations Changes by Borough
December 2024 – February 2025 and December 2025 – February 2026**

Month	Year	Bronx	Brooklyn	Manhattan	Queens	Staten Island	OSI	Other	Total
December	2024	833	781	431	761	155	153	121	3,235
	2025	865	722	408	775	146	121	114	3,151
	% Change	3.8%	-7.6%	-5.3%	1.8%	-5.8%	-20.9%	-5.8%	-2.6%
January	2025	817	798	478	808	149	159	131	3,340
	2026	944	765	427	735	152	138	116	3,277
	% Change	15.5%	-4.1%	-10.7%	-9.0%	2.0%	-13.2%	-11.5%	-1.9%
February	2025	847	650	399	706	147	142	123	3,014
	2026	841	711	365	690	162	137	111	3,017
	% Change	-0.7%	9.4%	-8.5%	-2.3%	10.2%	-3.5%	-9.8%	0.1%
Total	Dec 24 - Feb 25	2,497	2,229	1,308	2,275	451	454	375	9,589
	Dec 25 - Feb 26	2,650	2,198	1,200	2,200	460	396	341	9,445
	% Change	6.1%	-1.4%	-8.3%	-3.3%	2.0%	-12.8%	-9.1%	-1.5%

**Table 2: Child Welfare Prevention Cases: New and Closed
January 2024 - February 2026**

Year	Month	New Cases	Closed Cases
2024	Jan-24	683	378
	Feb-24	672	557
	Mar-24	650	592
	Apr-24	592	653
	May-24	590	820
	Jun-24	445	665
	Jul-24	517	671
	Aug-24	515	708
	Sep-24	489	501
	Oct-24	655	635
	Nov-24	574	573
	Dec-24	611	519
2025	Jan-25	682	499
	Feb-25	563	558
	Mar-25	631	683
	Apr-25	627	687
	May-25	583	689
	Jun-25	549	557
	Jul-25	637	696
	Aug-25	624	690
	Sep-25	620	545
	Oct-25	756	636
	Nov-25	624	556
	Dec-25	703	547
2026	Jan-25	688	524
	Feb-25	610	562

Note: Data excludes transfers.

**Table 3: Referrals to Child Welfare Prevention Services by Source
January 2024 - February 2026**

Year	Month	Total Referrals	DCP	FC Agencies	PPRS Transfer	School	Self	Other Sources*
2024	Jan-24	983	70.3%	2.0%	7.8%	5.8%	9.1%	5.0%
	Feb-24	961	67.5%	2.5%	10.7%	5.1%	7.9%	6.2%
	Mar-24	918	70.9%	1.7%	12.6%	3.1%	6.9%	4.8%
	Apr-24	947	71.1%	2.2%	14.6%	3.4%	3.7%	5.1%
	May-24	953	71.5%	1.2%	15.6%	3.1%	4.1%	4.5%
	Jun-24	712	75.4%	1.5%	11.8%	1.8%	4.6%	4.8%
	Jul-24	861	69.5%	2.1%	15.0%	2.7%	6.3%	4.5%
	Aug-24	754	70.0%	2.4%	13.0%	2.1%	6.2%	6.2%
	Sep-24	784	71.3%	1.9%	9.2%	1.5%	8.9%	7.1%
	Oct-24	958	65.1%	1.7%	9.3%	9.3%	9.3%	5.3%
	Nov-24	800	62.0%	1.8%	10.0%	10.9%	8.8%	6.6%
	Dec-24	879	68.6%	2.2%	8.8%	8.3%	6.3%	5.9%
2025	Jan-25	952	66.0%	1.7%	7.8%	11.8%	6.1%	6.7%
	Feb-25	820	68.0%	2.4%	9.5%	7.7%	6.0%	6.3%
	Mar-25	938	66.0%	1.7%	11.4%	8.0%	5.9%	7.0%
	Apr-25	920	68.5%	2.5%	10.4%	7.3%	5.4%	5.9%
	May-25	838	71.1%	1.7%	9.1%	7.2%	5.8%	5.1%
	Jun-25	827	74.1%	2.1%	7.3%	4.8%	6.2%	5.6%
	Jul-25	936	73.6%	2.2%	9.3%	3.6%	4.9%	6.3%
	Aug-25	878	72.1%	2.8%	10.1%	1.1%	6.3%	7.5%
	Sep-25	911	66.8%	2.5%	9.4%	4.3%	8.7%	8.2%
	Oct-25	1,019	64.8%	2.1%	8.2%	7.8%	8.5%	8.6%
	Nov-25	846	61.2%	1.7%	9.5%	9.3%	9.9%	8.4%
	Dec-25	977	66.4%	2.0%	8.0%	9.1%	7.0%	7.5%
2026	Jan-26	1,001	66.3%	1.5%	8.8%	8.2%	6.4%	8.8%
	Feb-26	845	64.3%	3.1%	13.1%	7.3%	6.7%	5.4%

Note: Data includes all referrals –
accepted and rejected

*Other Sources includes the Department of Homeless Services, Family Court, FAP, Hospitals and Medical facilities, the NYC Housing Authority, Probation, and Sponsor Agencies.