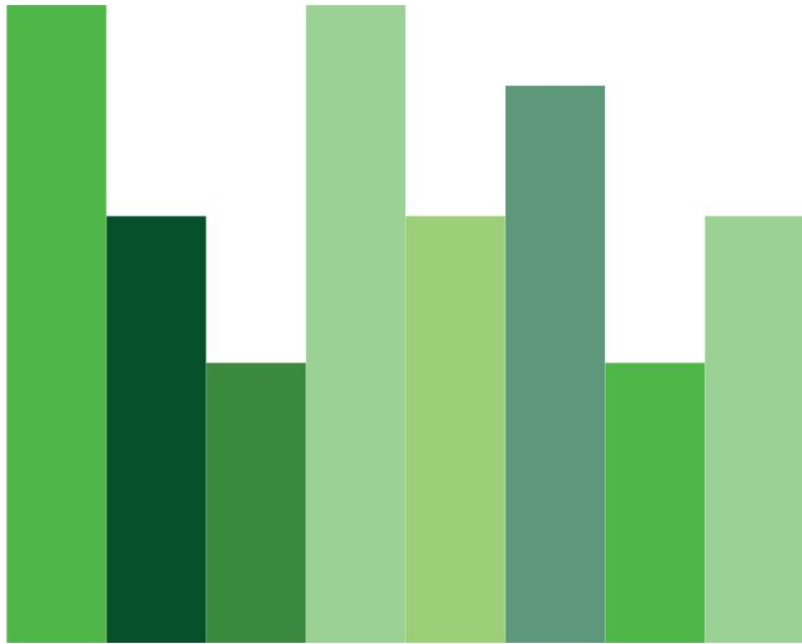


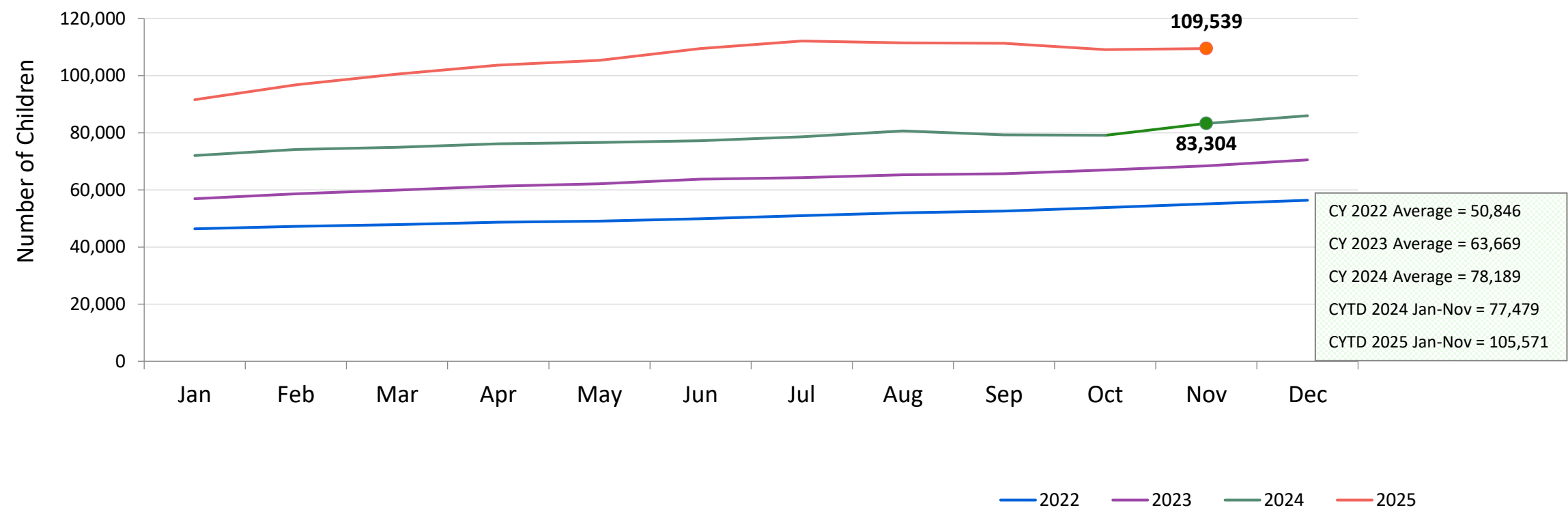
NYC Children
FLASH REPORT
monthly indicators



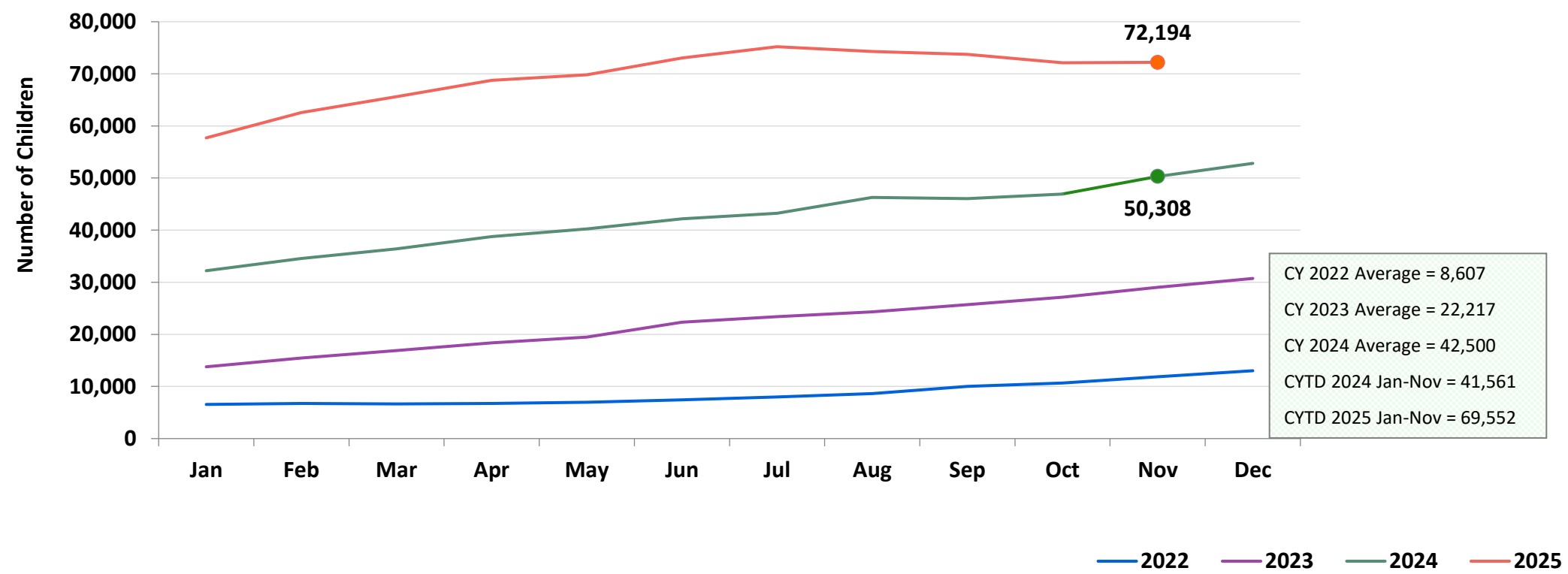
DECEMBER 2025



Children Using Vouchers for Child Care January 2022 – November 2025 (End of Month)

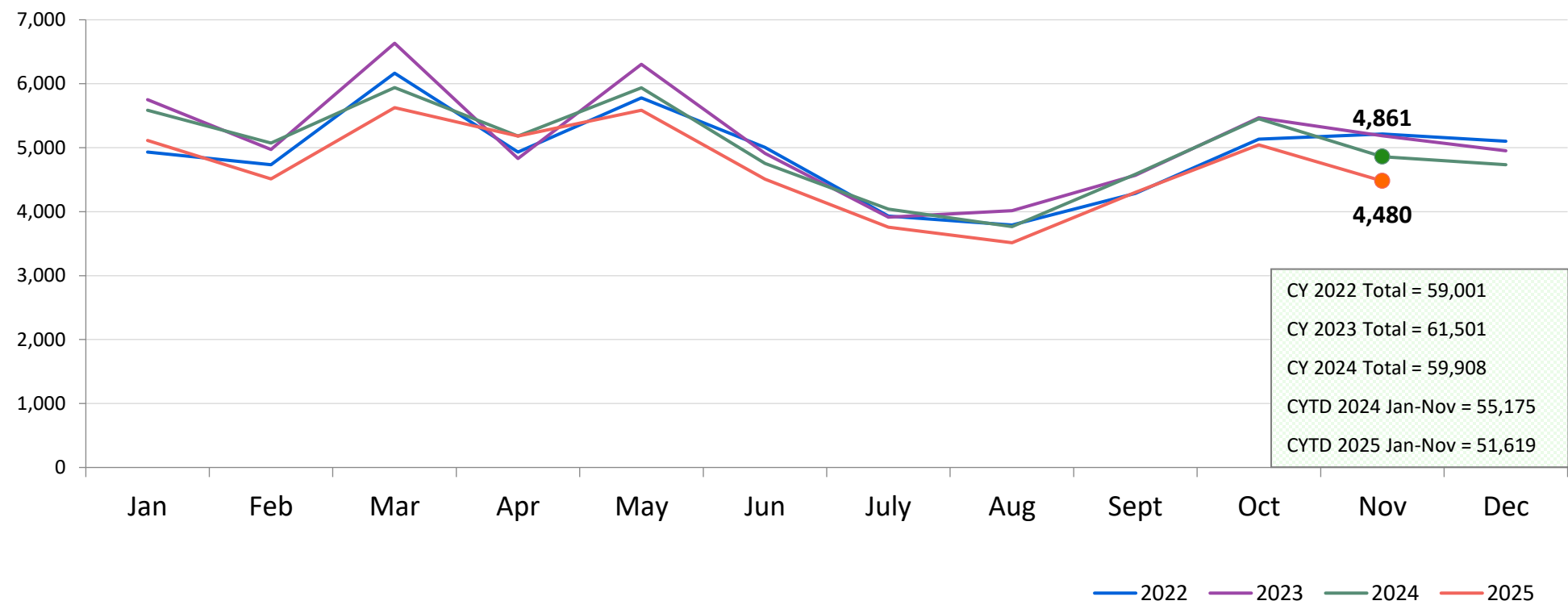


Children Using ACS-Issued Low-Income Child Care Vouchers* January 2022 – November 2025 (End of Month)



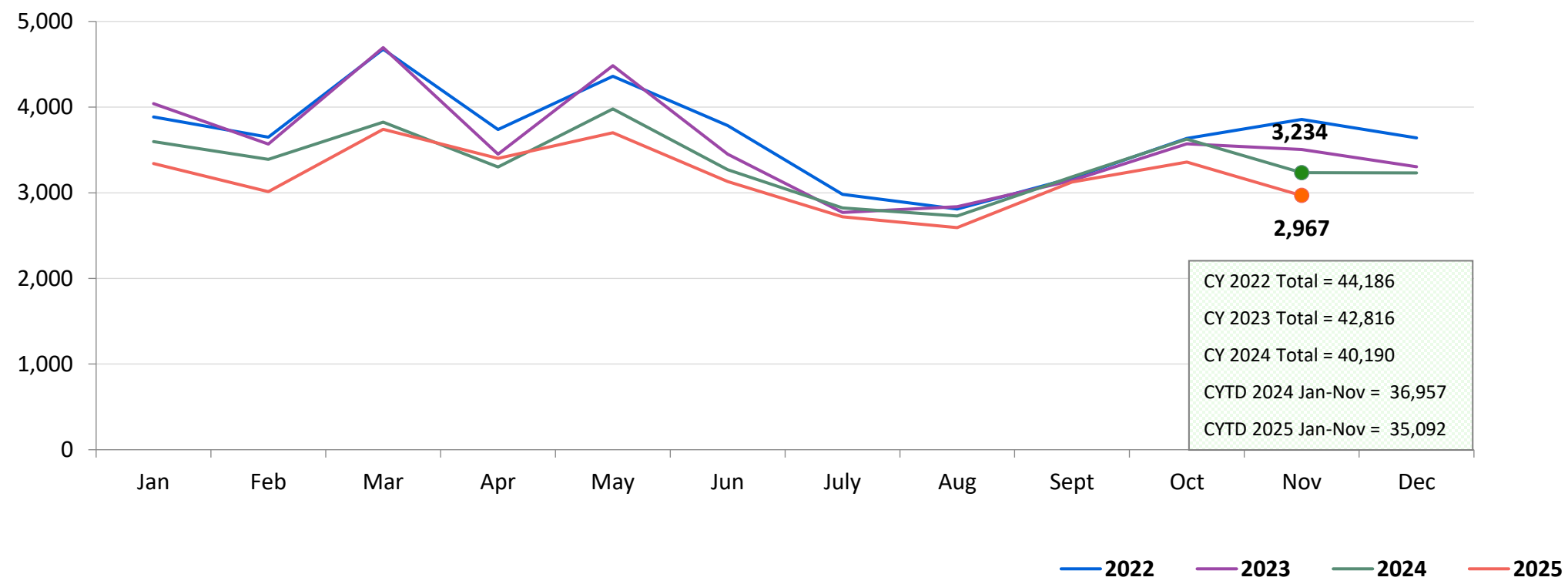
*This represents the subset of enrollments in child care with ACS-issued low-income vouchers funded by the NY State Child Care Block Grant (CCBG).

SCR Intakes January 2022 – November 2025

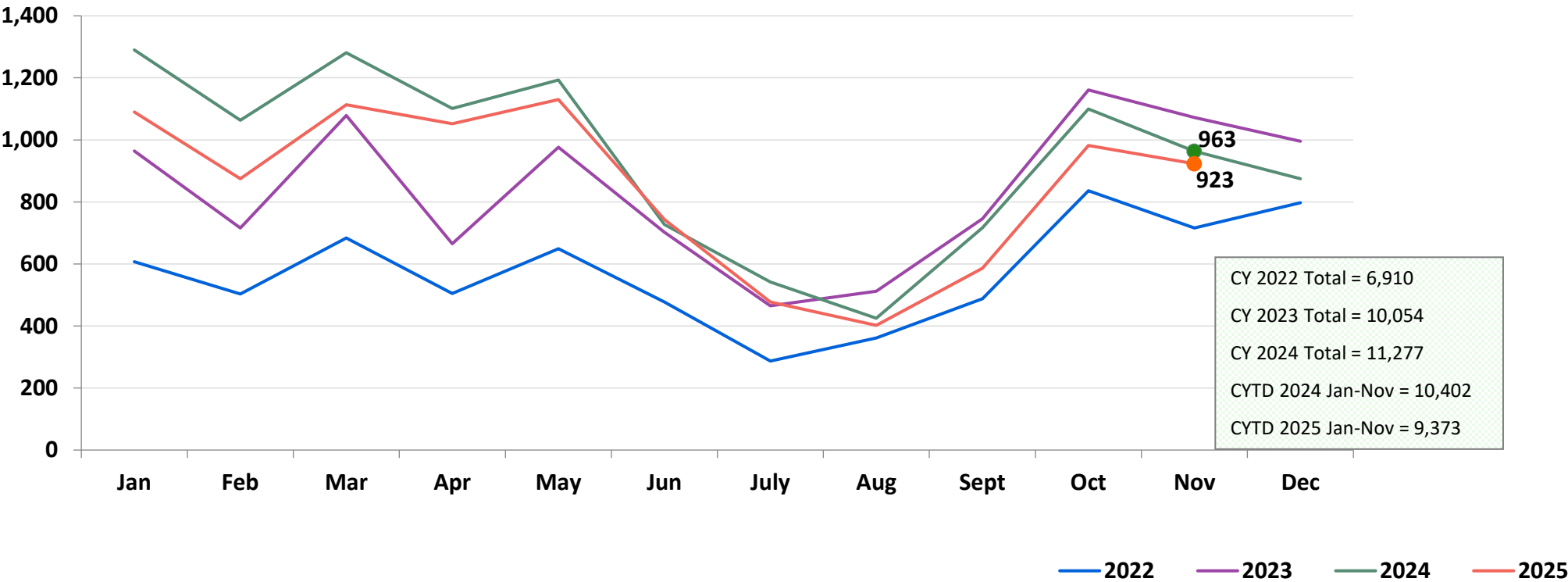


Note: SCR intakes can be followed by investigation or Collaborative Assessment Response and Support (CARES).
See Pages 31 through 34 of the Appendix for supporting data.

Consolidated Investigations January 2022 – November 2025

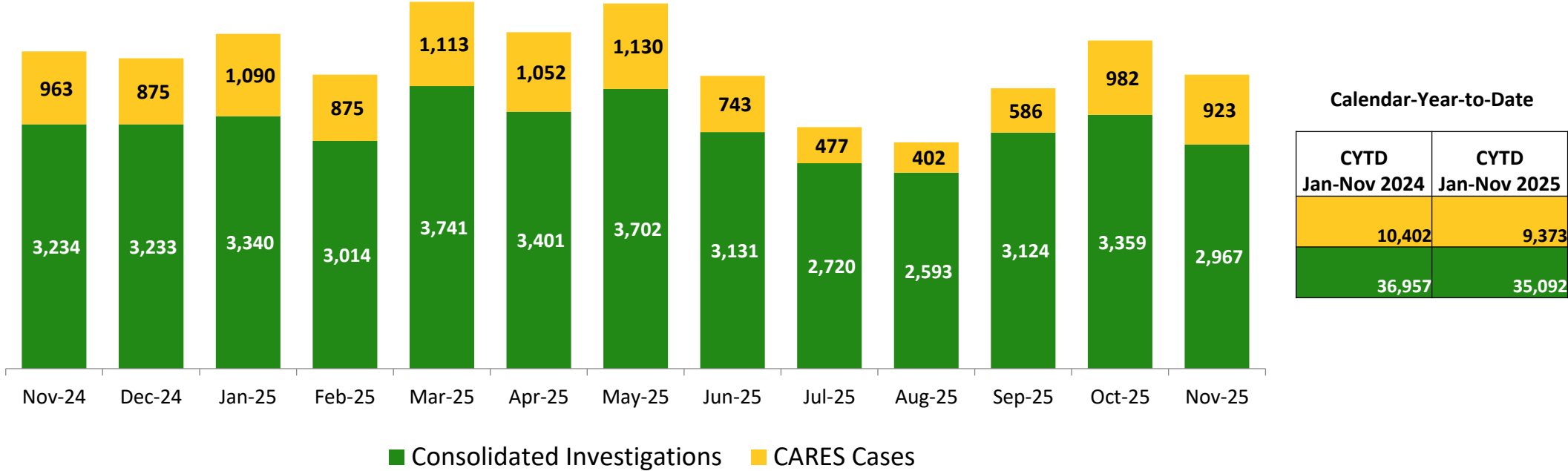


CARES* Cases January 2022 – November 2025



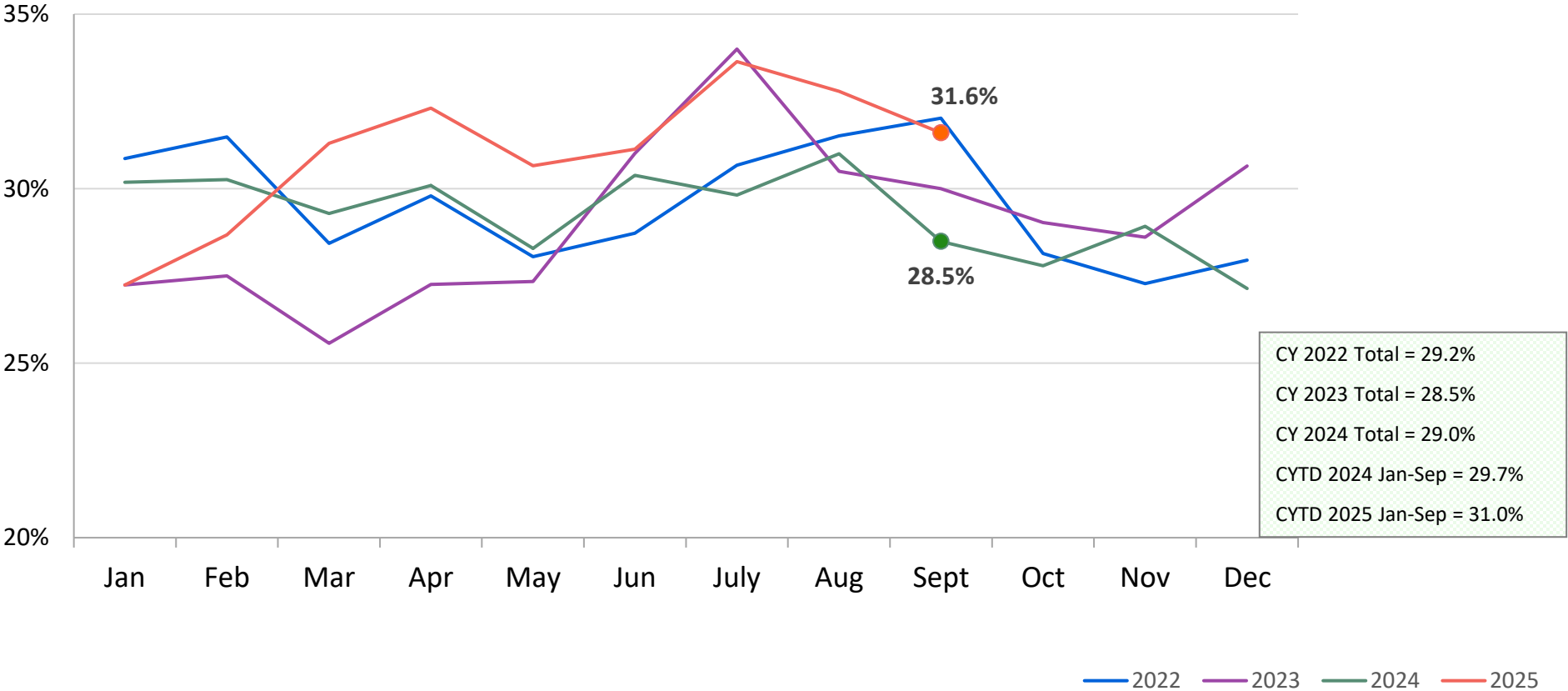
*CARES (Collaborative Assessment, Response, Engagement and Support, formerly known as FAR) is an alternative Child Protective response to some reports of child maltreatment. CARES does not require an investigation and determination of allegations and individual culpability for families reported to the SCR. It is an alternative approach to providing protection to children by engaging families in an assessment of child safety and of family needs, in finding solutions to family problems and in identifying informal and formal supports to meet their needs and increase their ability to care for their children.

Protective Diagnostic Cases (Consolidated Investigations and CARES) November 2024 – November 2025

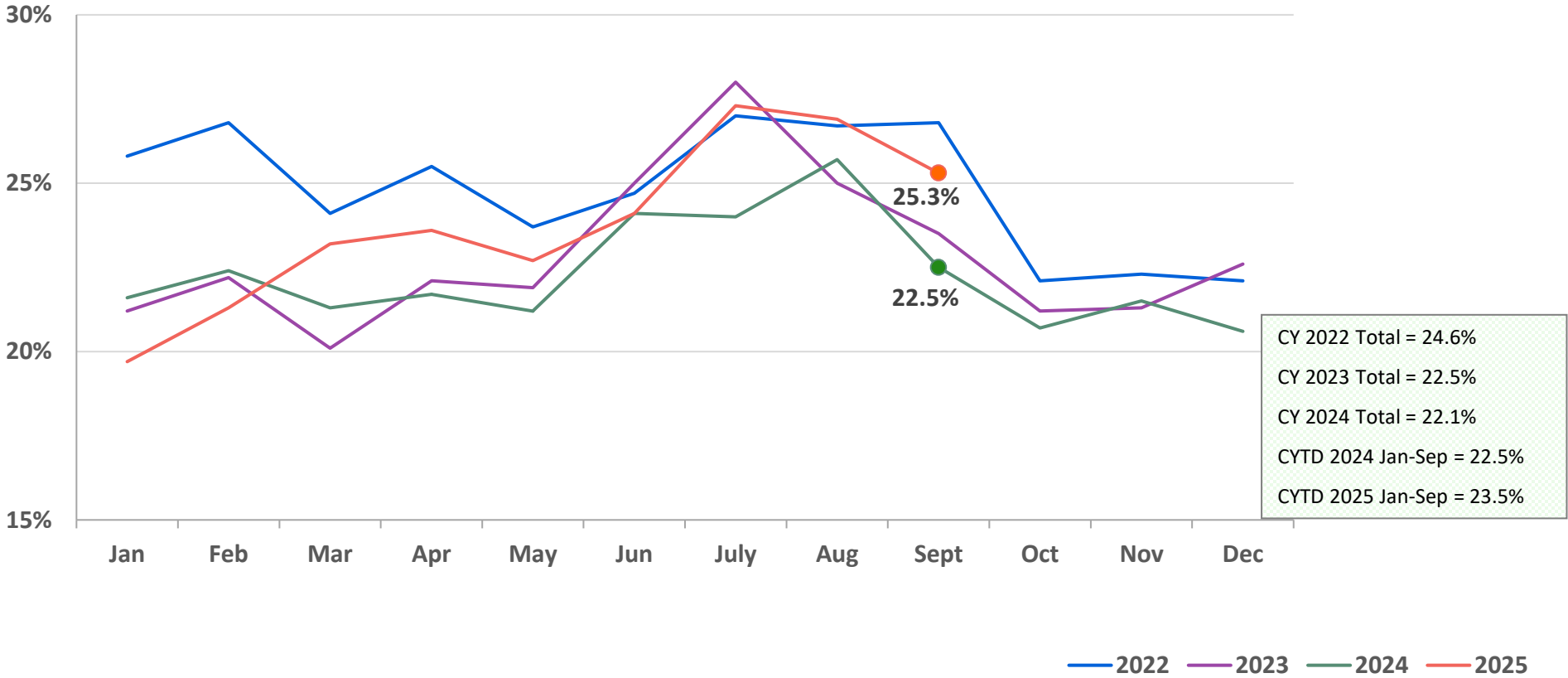


	Nov 2024	Dec 2024	Jan 2025	Feb 2025	Mar 2025	Apr 2025	May 2025	Jun 2025	Jul 2025	Aug 2025	Sep 2025	Oct 2025	Nov 2025	CYTD Jan-Nov 2024	CYTD Jan-Nov 2025
Number of Investigations & CARES cases	4,197	4,108	4,430	3,889	4,854	4,453	4,832	3,874	3,197	2,995	3,710	4,341	3,890	47,359	44,465

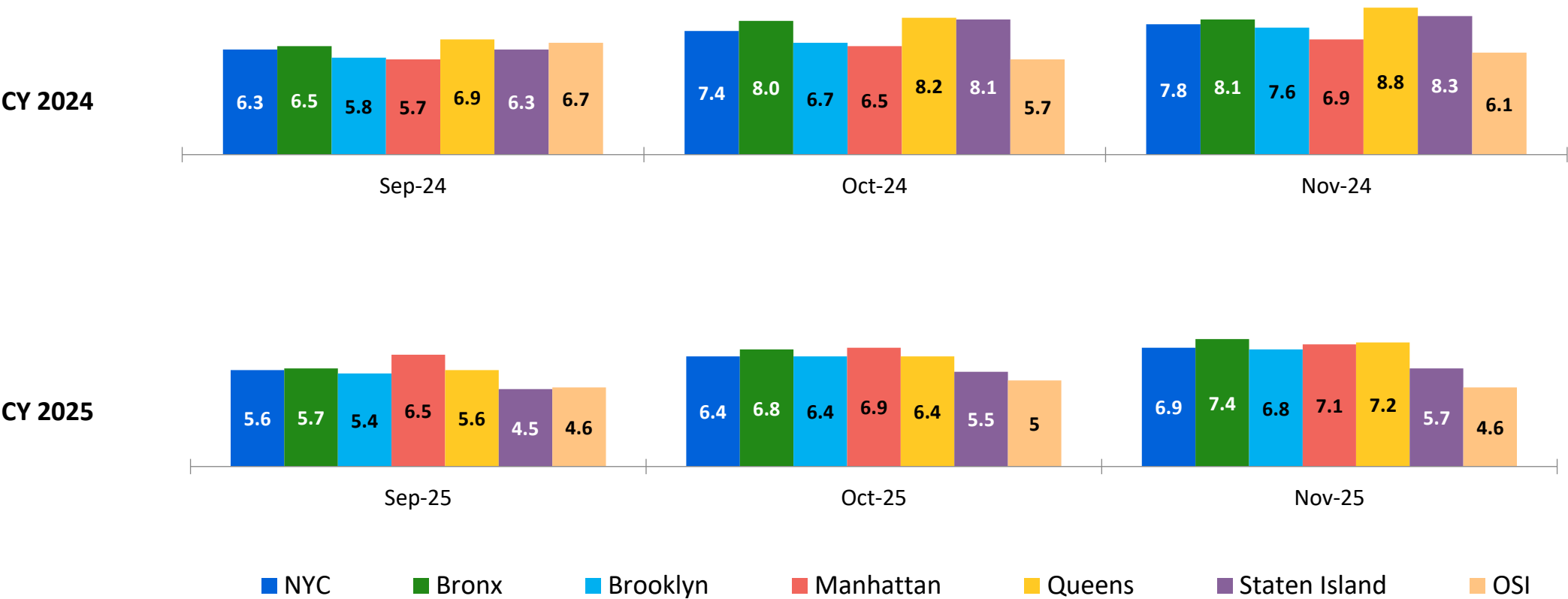
Investigation Indication Rate January 2022 – September 2025



Percent of Protective Diagnostic Cases (Consolidated Investigations and CARES) with Indicated Investigations January 2022 – September 2025

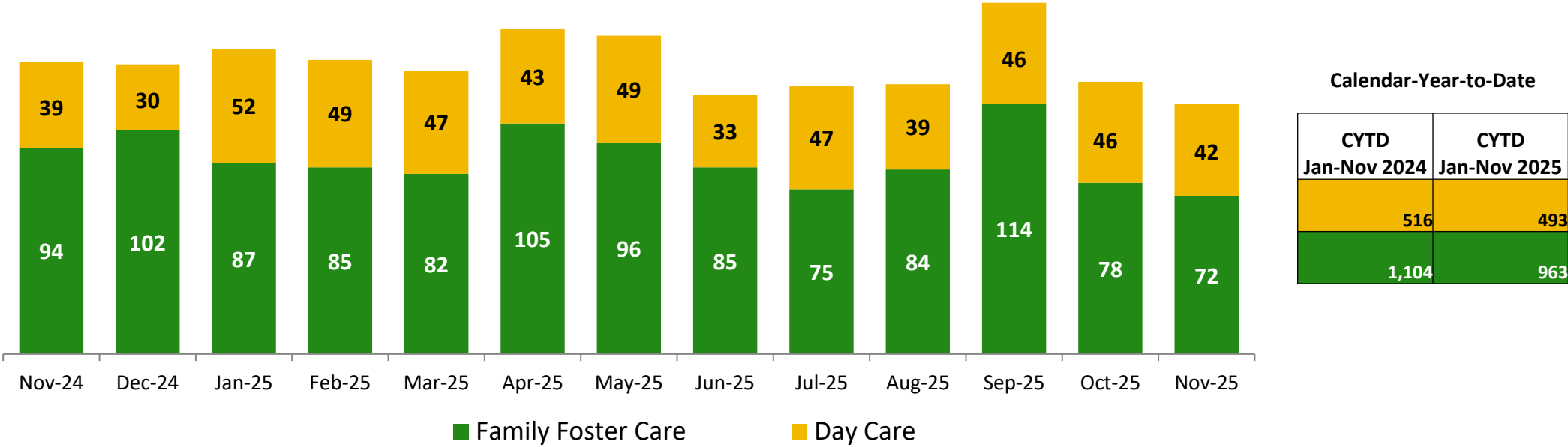


Average Child Protection Caseload* September 2024 – November 2024 and September 2025 – November 2025



*includes all caseload carrying Child Protection Specialists (CPS) in investigative and CARES Units in Primary and Case Manager roles.

OSI Family Foster Care and Day Care* Investigations November 2024 – November 2025

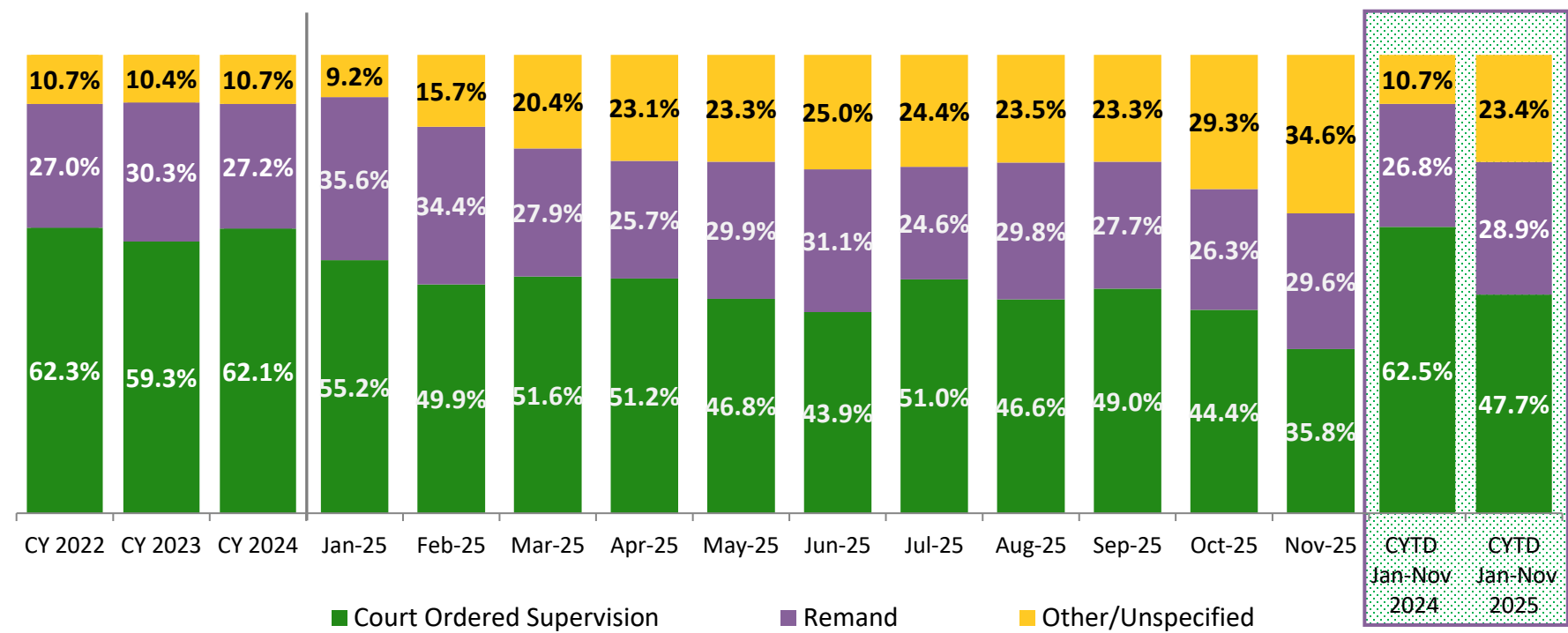


Calendar-Year-to-Date	
CYTD Jan-Nov 2024	CYTD Jan-Nov 2025
516	493
1,104	963

	Nov 2024	Dec 2024	Jan 2025	Feb 2025	Mar 2025	Apr 2025	May 2025	Jun 2025	Jul 2025	Aug 2025	Sep 2025	Oct 2025	Nov 2025	CYTD Jan-Nov 2024	CYTD Jan-Nov 2025
Number of Investigations	133	132	139	134	129	148	145	118	122	123	160	124	114	1,620	1,456

*Day Care investigations include alleged abuse or maltreatment of children perpetrated by someone who cares for children in a setting that is not the child’s familial home and that requires state or local government approval and is subject to state laws, regulations, and oversight. This includes, but is not limited to, ACS/NYC PS Early Care and Education programs. Foster care investigations include alleged abuse or maltreatment of children in foster care, either in their foster home or during visits or trial discharge with their families; and alleged abuse or maltreatment of the children of foster parents.

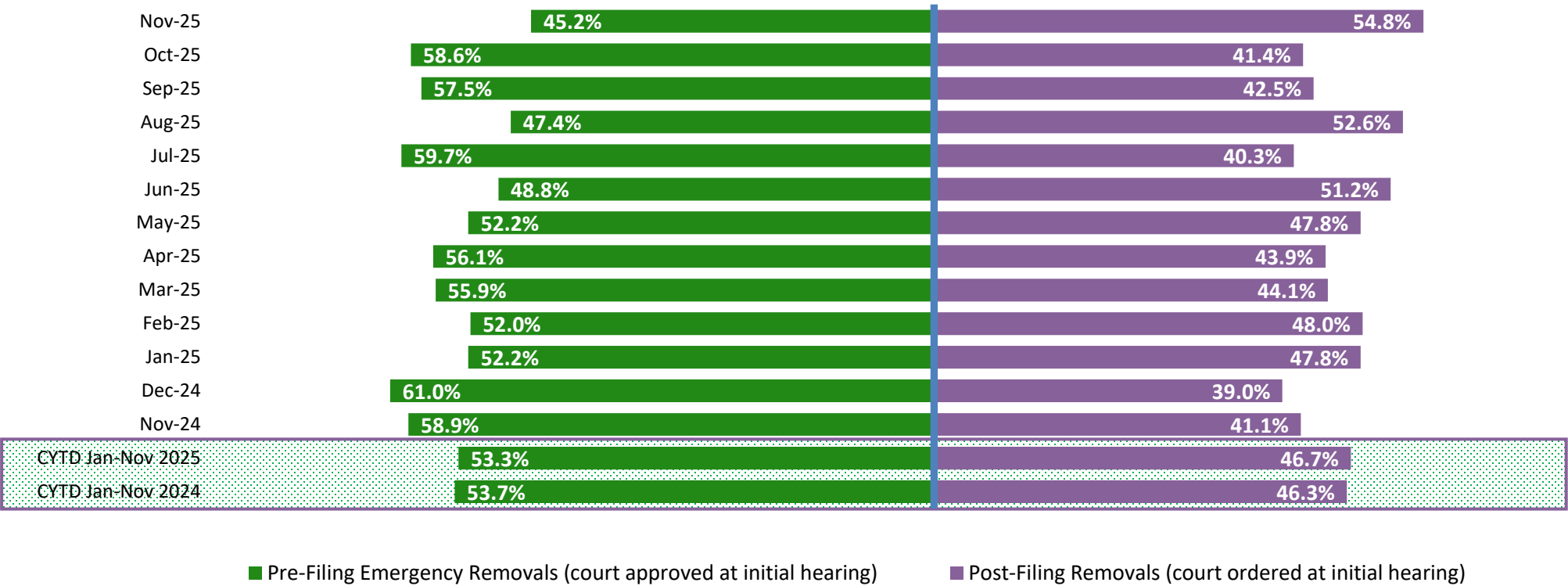
Article 10 Filings and Initial Hearing Outcomes, Children CY 2022 – November 2025



	CY 2022	CY 2023	CY 2024	Jan 2025	Feb 2025	Mar 2025	Apr 2025	May 2025	Jun 2025	Jul 2025	Aug 2025	Sep 2025	Oct 2025	Nov 2025	CYTD Jan-Nov 2024	CYTD Jan-Nov 2025
Children with Article 10 Filings	7,046	6,761	7,158	382	369	519	602	532	547	524	459	484	617	419	6,707	5,454

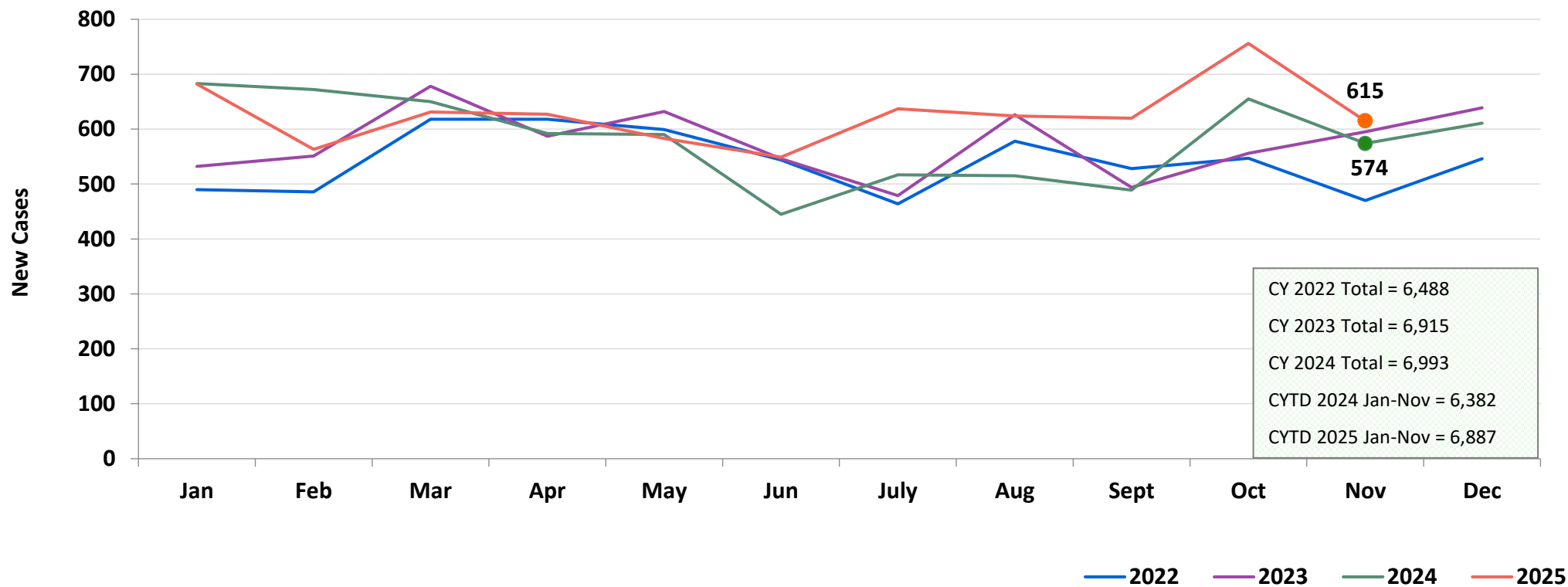
Note: The category “Other/Unspecified” includes no outcome specified; no order issued; and released with no supervision to respondent or non-respondent. Beginning with the August 2025 Flash, revised data include outcomes of hearings continued at the initial hearing. Due to data entry lags, many filings categorized as “Other/Unspecified” in recent months will be re-categorized in future Flash reports.

Remands Approved at Initial Article 10 Hearing by Removal Status November 2024 – November 2025



	Nov 2024	Dec 2024	Jan 2025	Feb 2025	Mar 2025	Apr 2025	May 2025	Jun 2025	Jul 2025	Aug 2025	Sep 2025	Oct 2025	Nov 2025	CYTD Jan-Nov 2024	CYTD Jan-Nov 2025
Children Remanded	146	146	136	127	145	155	159	170	129	137	134	162	124	1,798	1,578

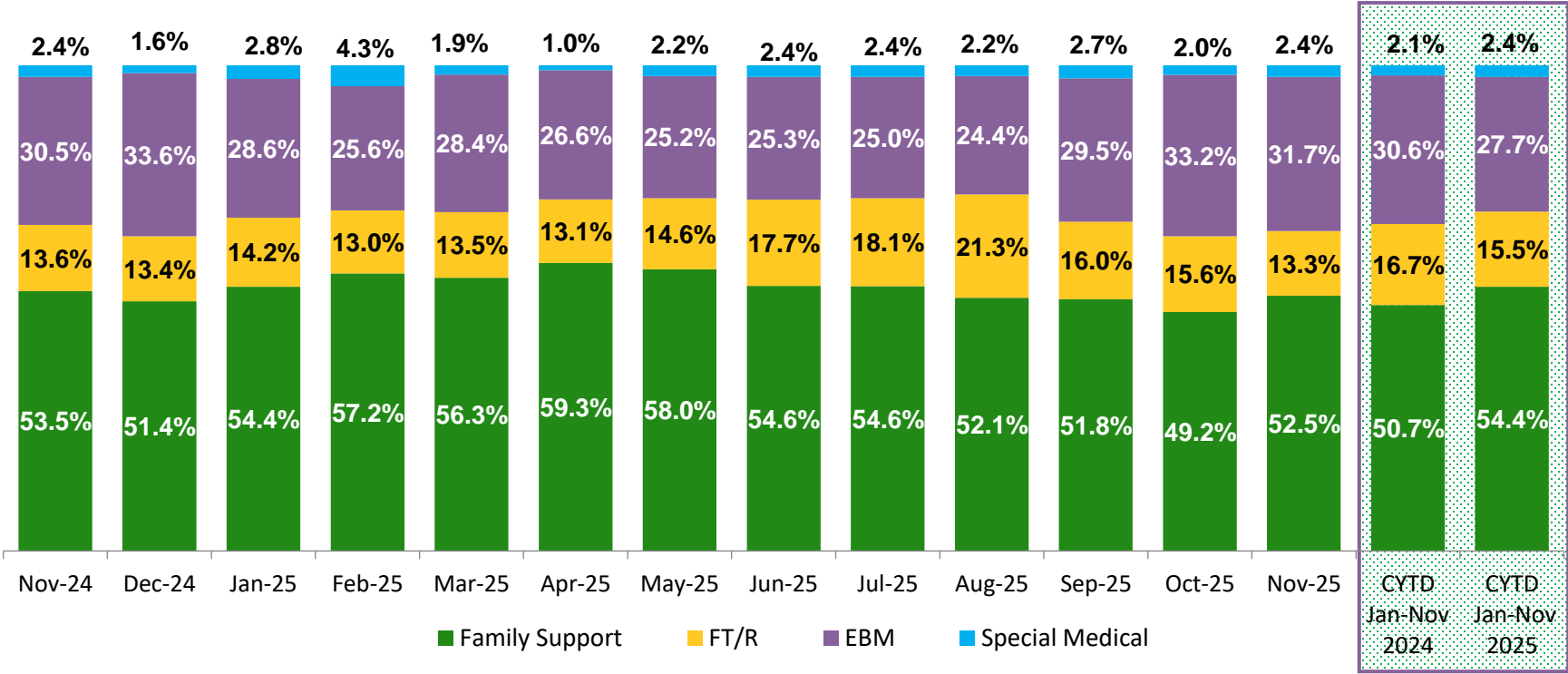
New Child Welfare Prevention Cases January 2022 – November 2025



*New prevention cases do not include cases transferred from one preventive program to another.

See Pages 35 and 36 of the Appendix for supporting data.

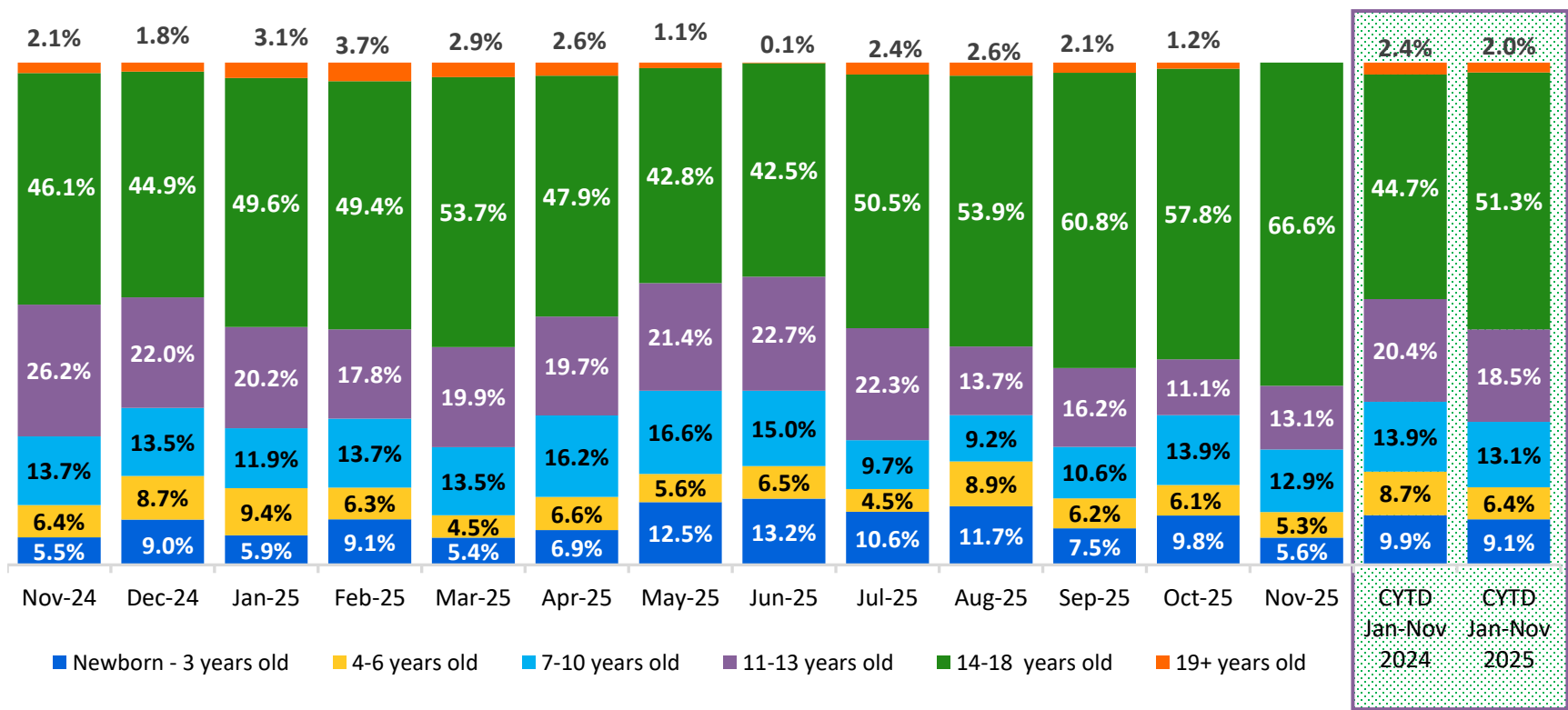
New Child Welfare Prevention Cases by Program Type* November 2024 – November 2025



	Nov 2024	Dec 2024	Jan 2025	Feb 2025	Mar 2025	Apr 2025	May 2025	Jun 2025	Jul 2025	Aug 2025	Sep 2025	Oct 2025	Nov 2025	CYTD Jan-Nov 2024	CYTD Jan-Nov 2025
Number of New Preventive Cases	574	611	682	563	631	627	583	549	637	624	620	756	615	6,382	6,887

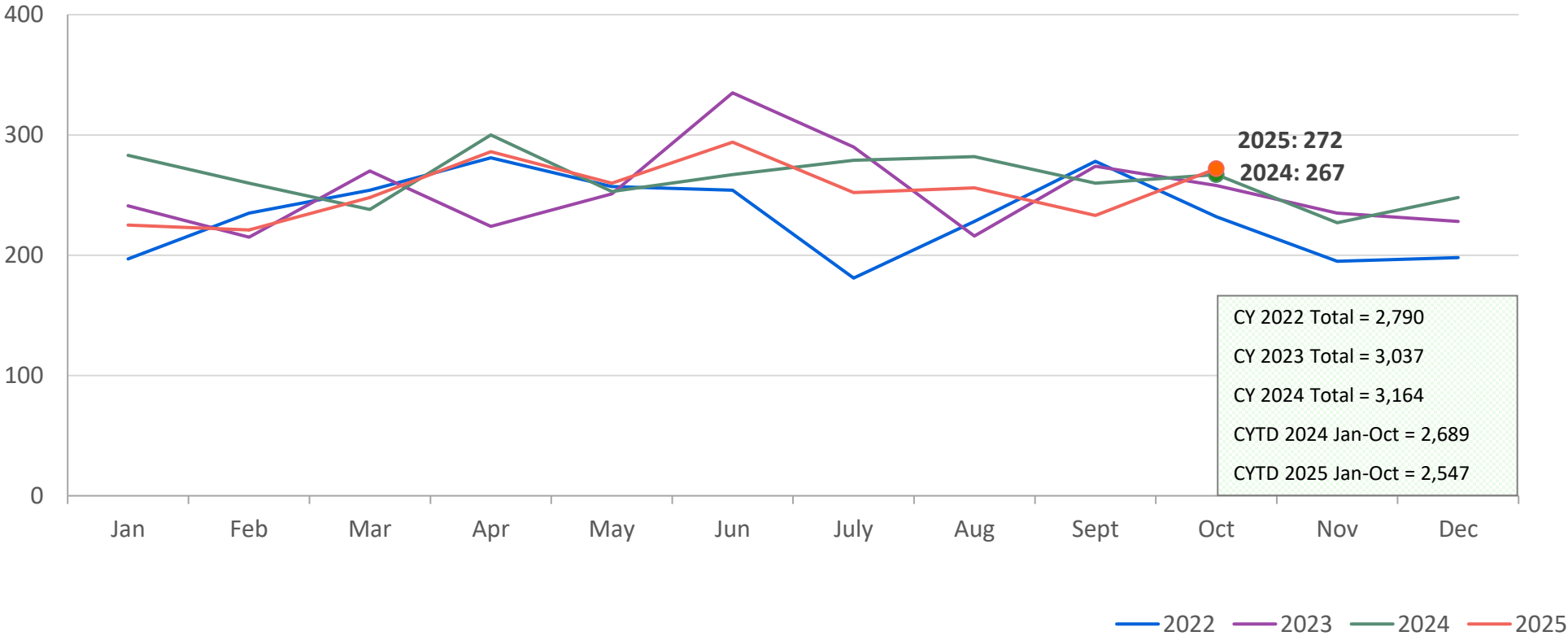
* New prevention cases do not include cases transferred from one prevention program to another.

Average Daily Children’s Center Population November 2024 – November 2025

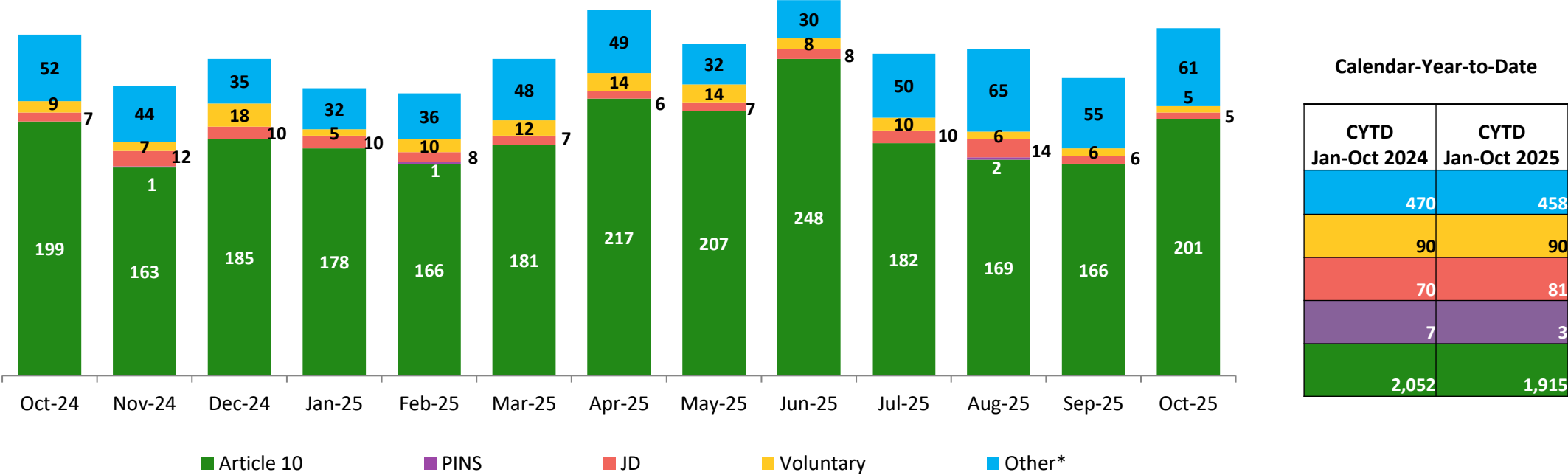


	Nov 2024	Dec 2024	Jan 2025	Feb 2025	Mar 2025	Apr 2025	May 2025	Jun 2025	Jul 2025	Aug 2025	Sep 2025	Oct 2025	Nov 2025	CYTD Jan-Nov 2024 Average	CYTD Jan-Nov 2025 Average
Average Number of Children	77	70	73	57	62	64	70	76	69	61	56	55	39	74	62

New Placements of Children into Foster Care January 2022 – October 2025



Reason for New Placements of Children into Foster Care October 2024 – October 2025

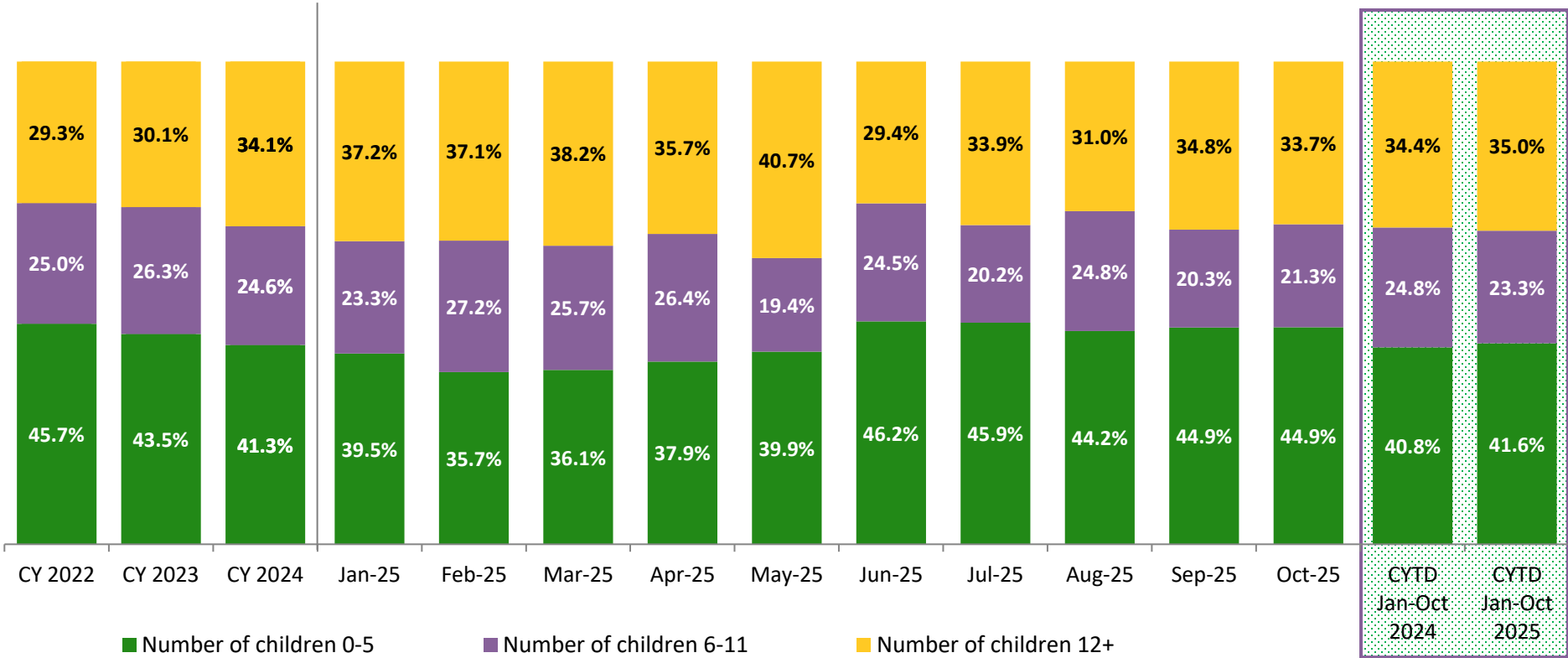


	Oct 2024	Nov 2024	Dec 2024	Jan 2025	Feb 2025	Mar 2025	Apr 2025	May 2025	Jun 2025	Jul 2025	Aug 2025	Sep 2025	Oct 2025	CYTD Jan-Oct 2024	CYTD Jan-Oct 2025
Number of Placements	267	227	248	225	221	248	286	260	294	252	256	233	272	2,689	2,547

*Due to data entry lags, many placements currently categorized as “Other” in recent months will be re-categorized in future Flash reports.

New Placements of Children into Foster Care* by Age

CY 2022 – October 2025

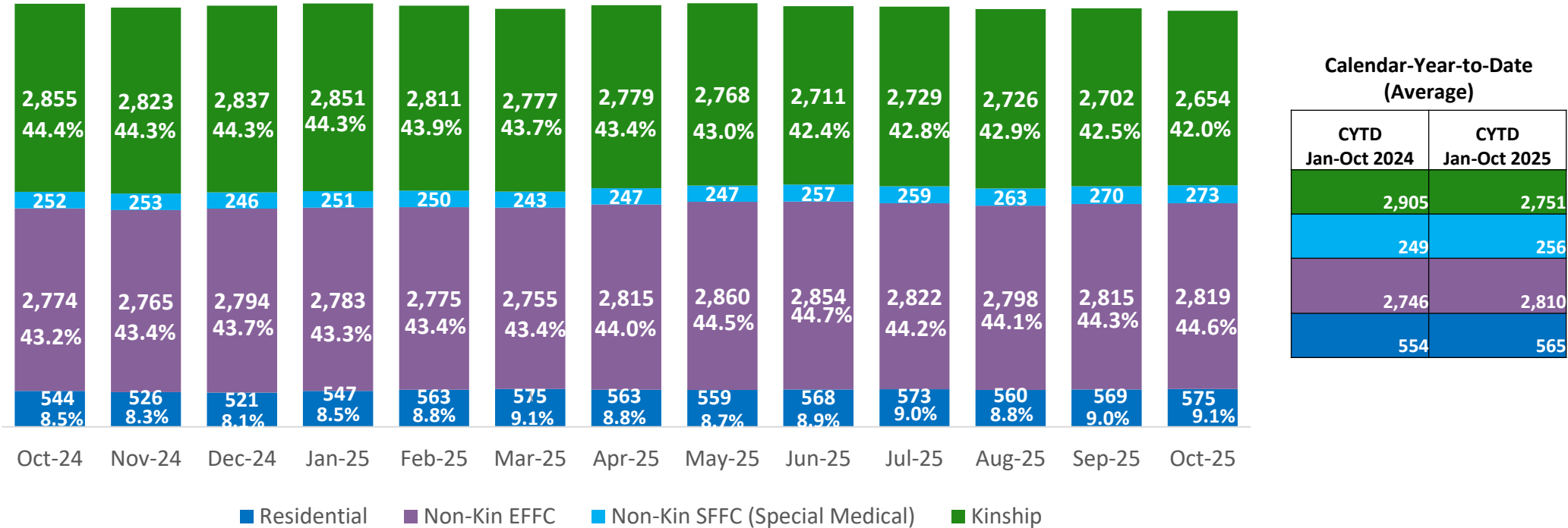


	CY 2022	CY 2023	CY 2024	Jan 2025	Feb 2025	Mar 2025	Apr 2025	May 2025	Jun 2025	Jul 2025	Aug 2025	Sep 2025	Oct 2025	CYTD Jan-Oct 2024	CYTD Jan-Oct 2025
Number of Placements	2,721	2,960	3,072	215	213	241	280	253	286	242	242	227	267	2,619	2,466

*Excludes CTH placements.

Children in Foster Care*

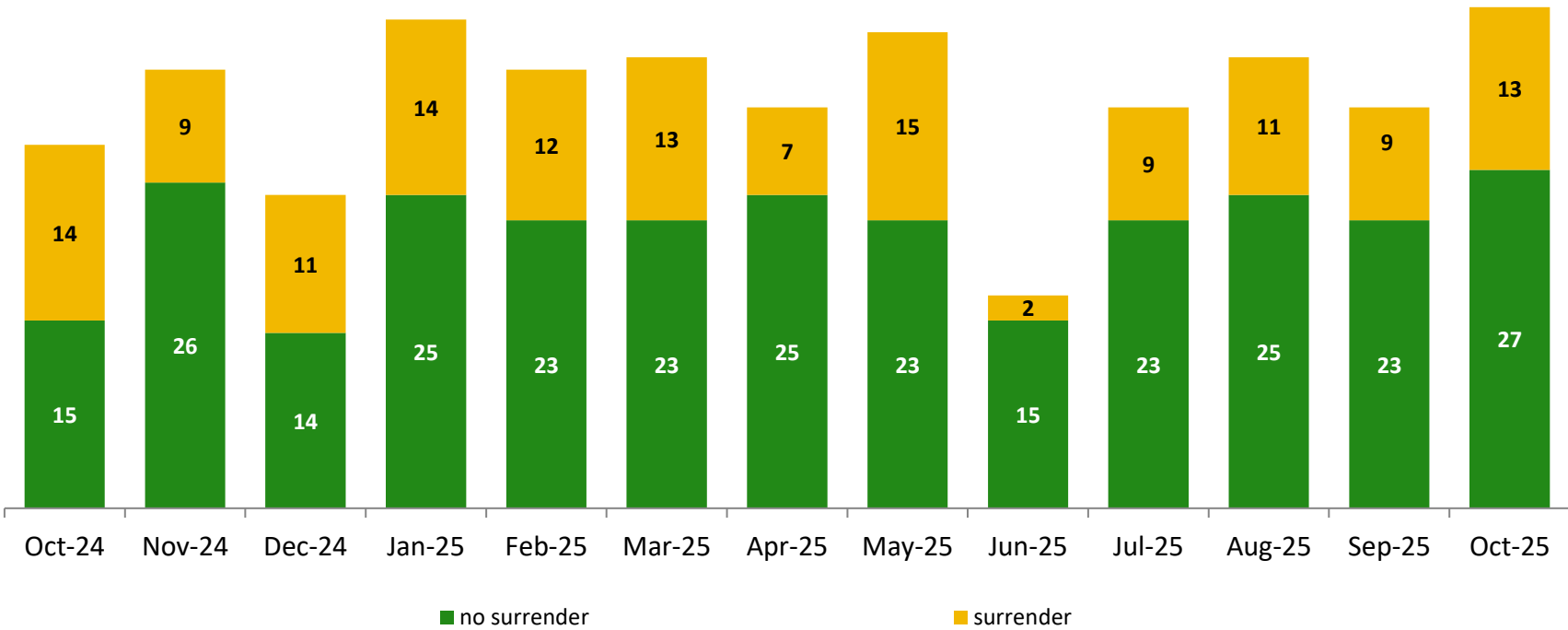
October 2024 – October 2025 (end of month)



	Oct 2024	Nov 2024	Dec 2024	Jan 2025	Feb 2025	Mar 2025	Apr 2025	May 2025	Jun 2025	Jul 2025	Aug 2025	Sep 2025	Oct 2025	CYTD Jan-Oct 2024 Average	CYTD Jan-Oct 2025 Average
Number in Foster Care	6,425	6,367	6,398	6,432	6,399	6,350	6,404	6,434	6,390	6,383	6,347	6,356	6,321	6,455	6,382

*Excludes CTH placements and includes children in 24-hour care and approximately 60 young children who are living in foster homes or residential care facilities with their mothers who are in foster care (8D children).

Children Freed for Adoption, Surrender by at Least One Parent October 2024 – October 2025

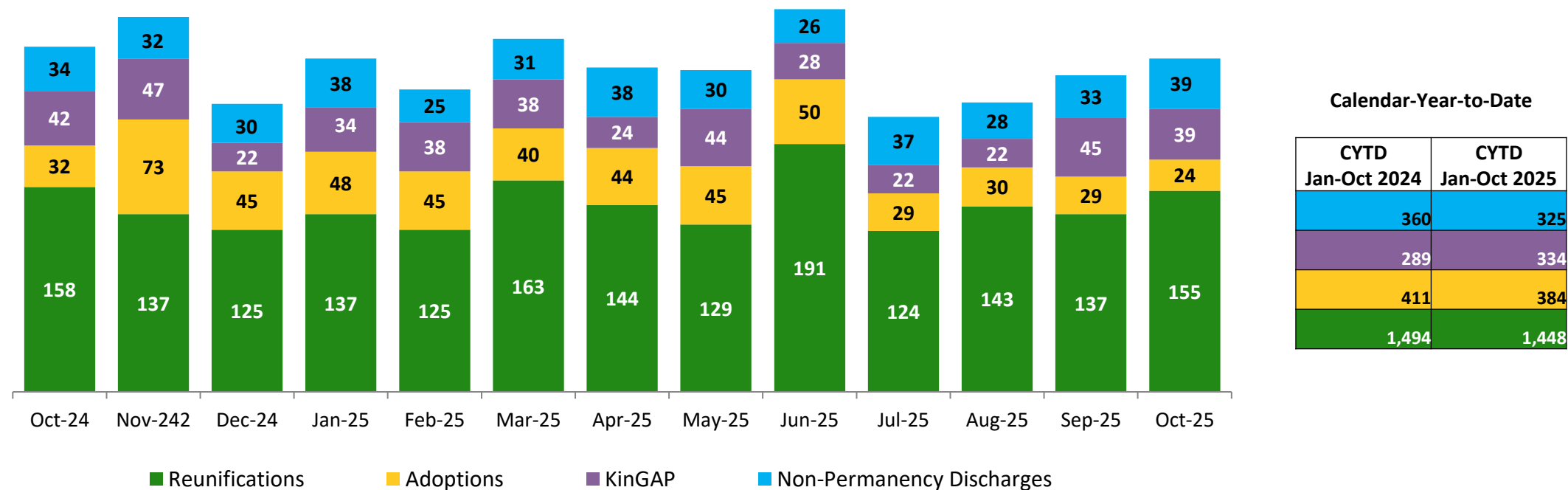


Calendar-Year-to-Date	
CYTD Jan-Oct 2024	CYTD Jan-Oct 2025
128	105
287	232

	Oct 2024	Nov 2024	Dec 2024	Jan 2025	Feb 2025	Mar 2025	Apr 2025	May 2025	Jun 2025	Jul 2025	Aug 2025	Sep 2025	Oct 2025	CYTD Jan-Oct 2024	CYTD Jan-Oct 2025
Number Freed for Adoption	29	35	25	39	35	36	32	38	17	32	36	32	40	415	337

Permanency and Non-Permanency* Discharges from Foster Care**

October 2024 – October 2025

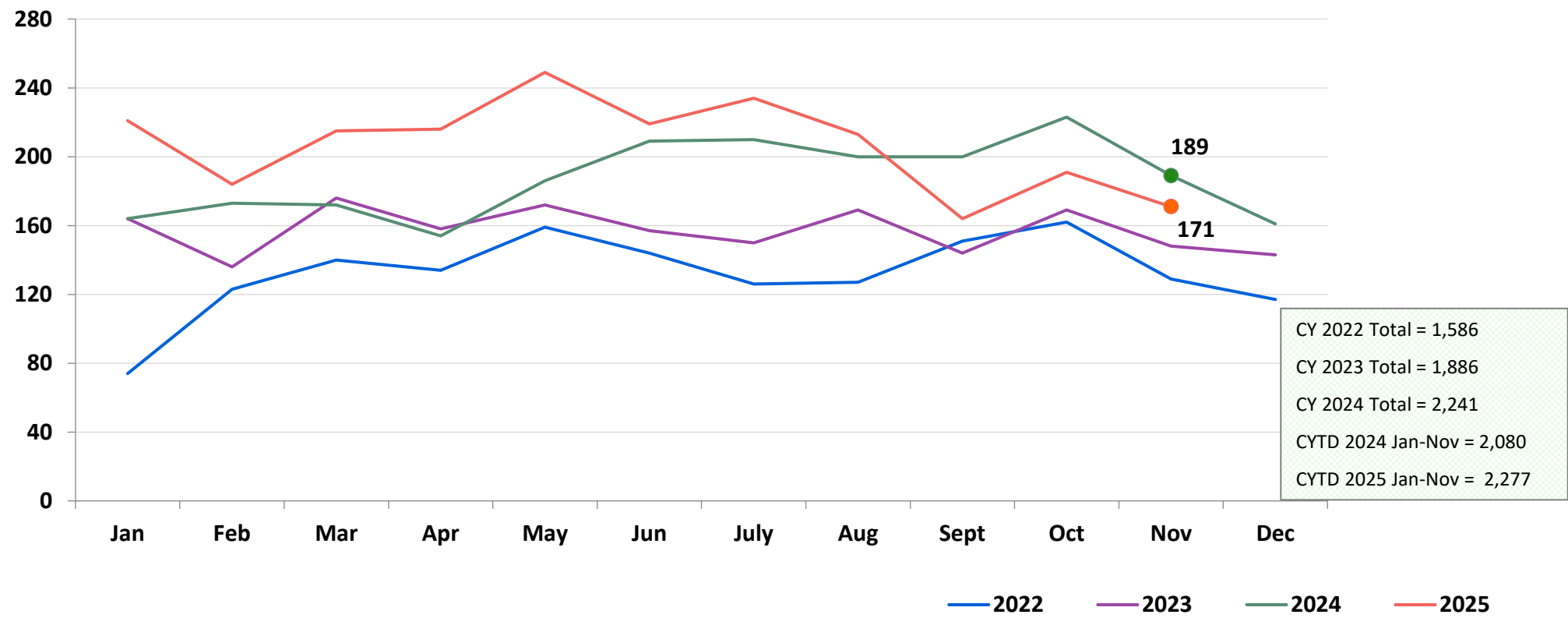


	Oct 2024	Nov 2024	Dec 2024	Jan 2025	Feb 2025	Mar 2025	Apr 2025	May 2025	Jun 2025	Jul 2025	Aug 2025	Sep 2025	Oct 2025	CYTD Jan-Oct 2024	CYTD Jan-Oct 2025
Number of Discharges	266	289	222	257	233	272	250	248	295	212	223	244	257	2,554	2,491

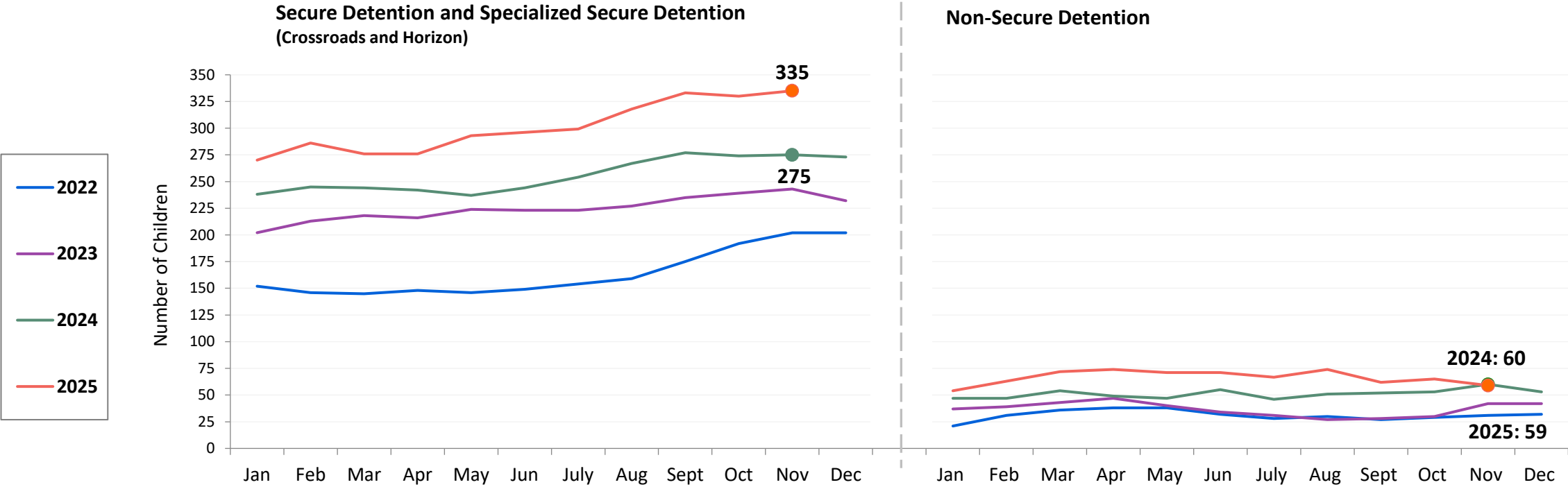
*Non-permanency discharges include AWOL, APPLA (youth 18-20 years old discharged to self and youth who reached 21 while in care), and other discharge destinations such as psychiatric institutions and correctional facilities and discharges with unspecified destinations.

**Excludes discharges of youth from CTH placements.

Total Monthly Admissions to Detention January 2022 – November 2025

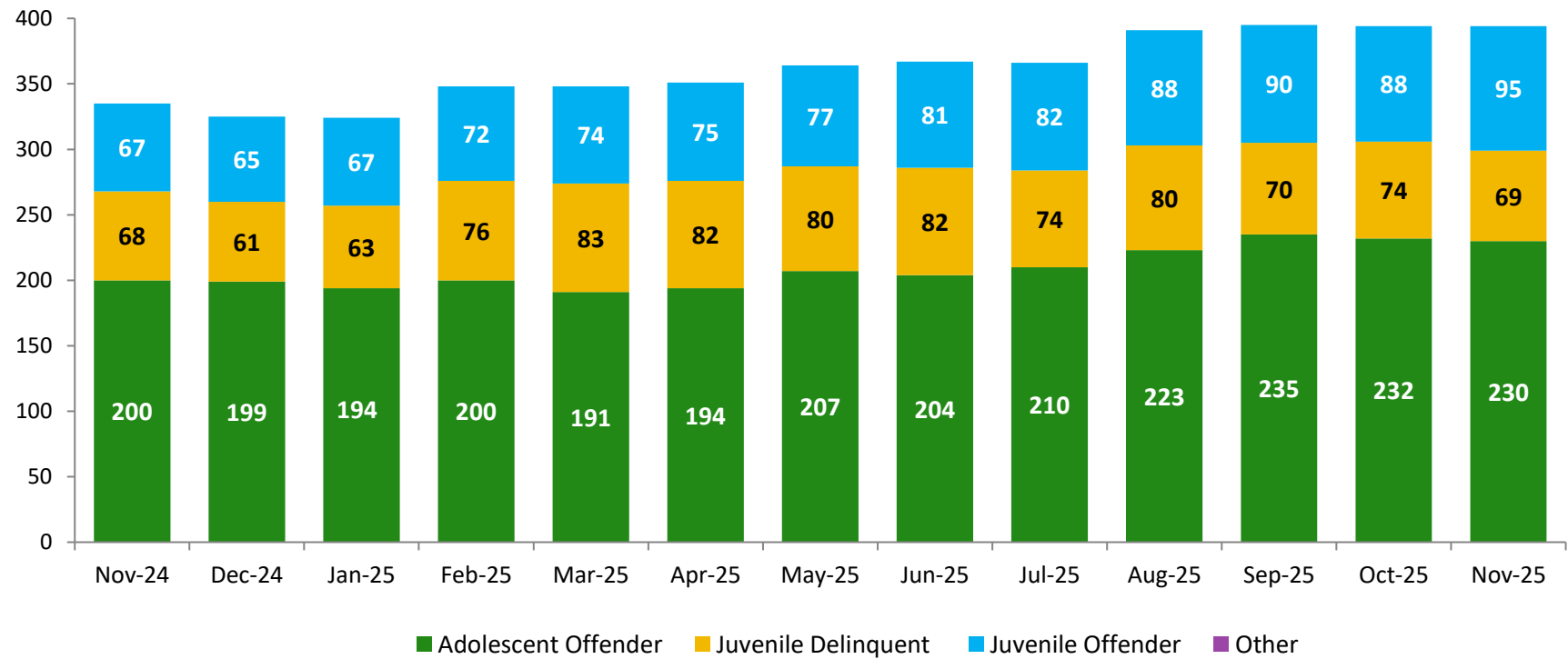


Detention Monthly Average Daily Population January 2022 – November 2025



	CYTD Jan-Nov 2024	CYTD Jan-Nov 2025
Secure Detention and Specialized Secure Detention	254.2	301.0
Non-Secure Detention	51.0	66.5

Detention Total Monthly Average Daily Population by Case Type* November 2024 – November 2025

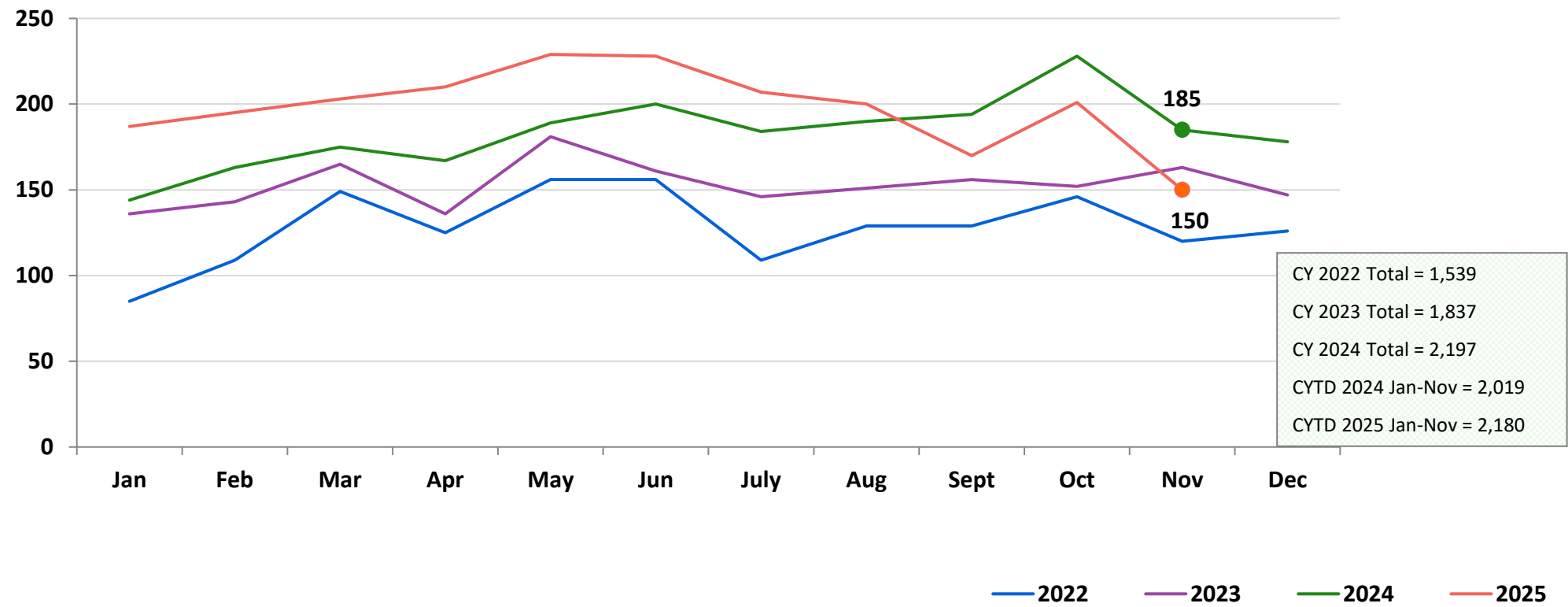


Calendar-Year-to-Date Average	
CYTD Jan-Nov 2024	CYTD Jan-Nov 2025
0.2	0.1
57.0	80.9
61.1	75.8
186.8	210.9

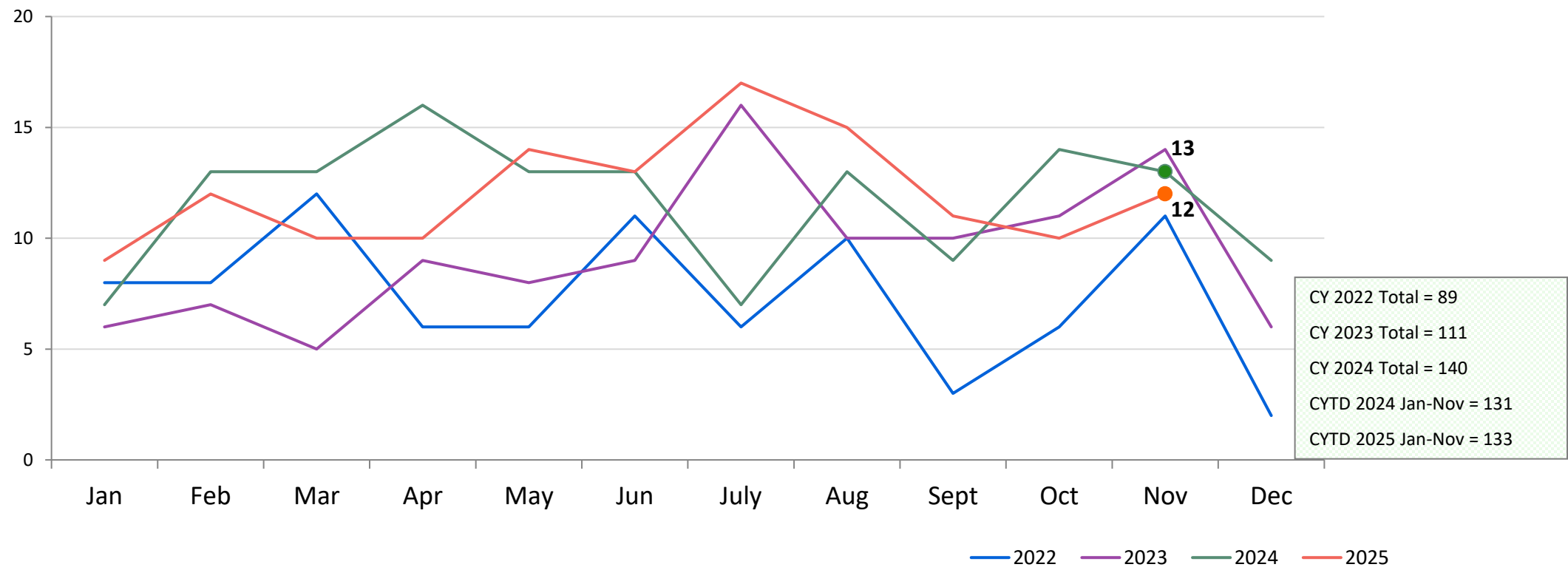
Total Average Daily Population														
Nov 2024	Dec 2024	Jan 2025	Feb 2025	Mar 2025	Apr 2025	May 2025	Jun 2025	Jul 2025	Aug 2025	Sep 2025	Oct 2025	Nov 2025	CYTD Average Jan-Nov 2024	CYTD Average Jan-Nov 2025
336	326	324	348	348	351	364	367	366	392	395	395	394	305.2	367.6

*Case Type definitions: Adolescent Offender (AO) is a person 16 or 17 years of age charged with a felony; Juvenile Delinquent (JD) is a person 7-15 years of age who has committed an act which would be considered a crime if the person were old enough and capable of being treated as an adult. Sixteen- and seventeen-year-olds charged with a misdemeanor are also JDs; Juvenile Offender (JO) a person 13-15 years of age with a serious violent felony charge; and Other case type includes youth detained for other authorities and ACS warrants.

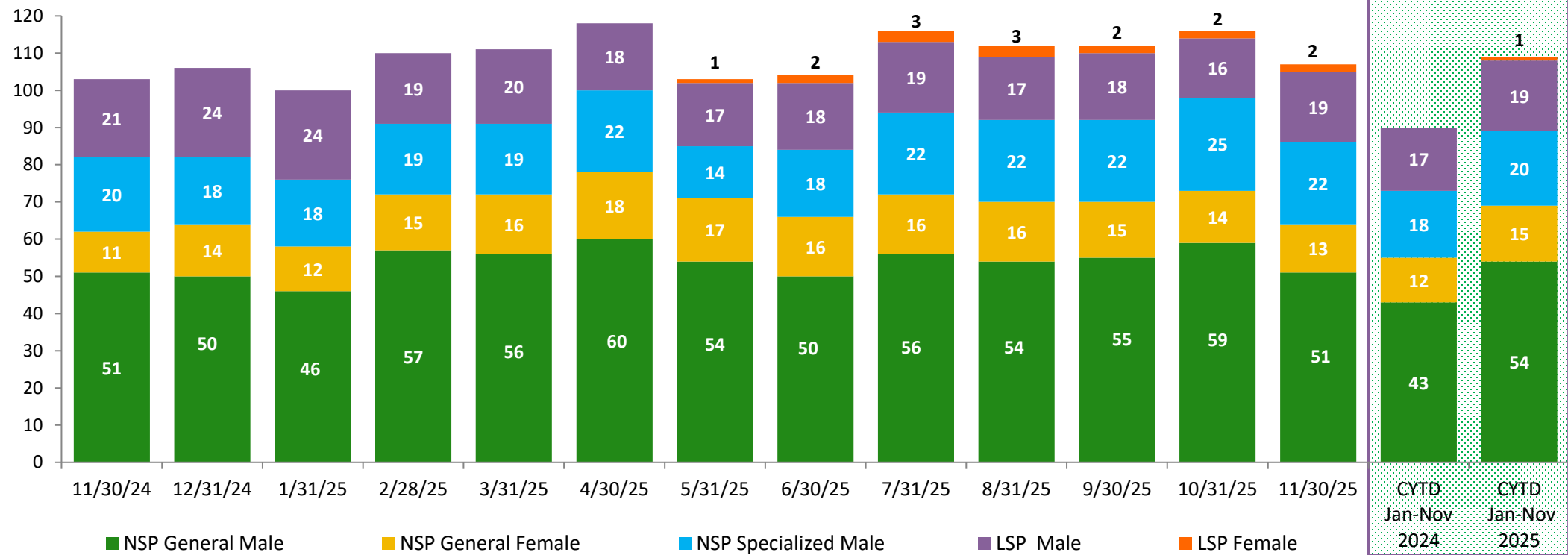
Total Monthly Releases from Detention January 2022 – November 2025



Close to Home Admissions January 2022 – November 2025

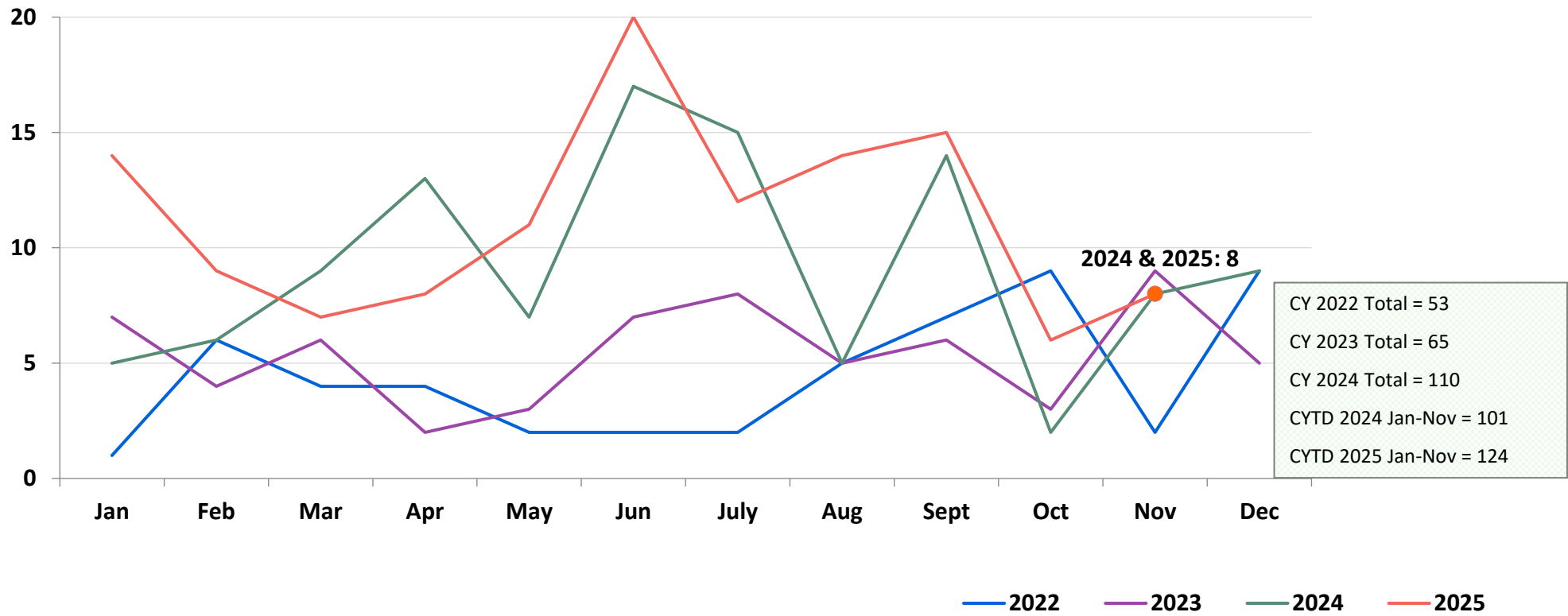


CTH Placement, In 24-hour Care November 2024 – November 2025 (end of month)

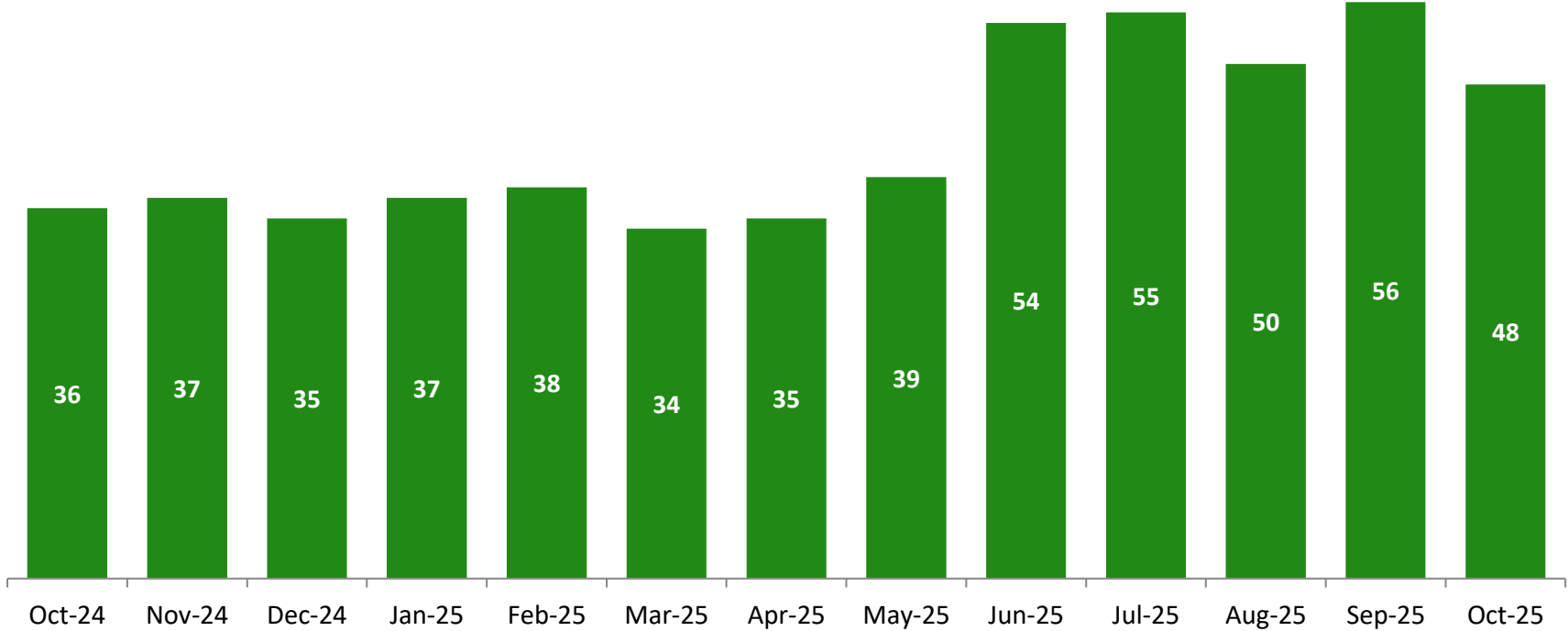


Number in Placement															
	11/30/2024	12/31/2024	1/31/2025	2/28/2025	3/31/2025	4/30/2025	5/31/2025	6/30/2025	7/31/2025	8/31/2025	9/30/2025	10/31/2025	11/30/2025	CYTD Average Jan-Nov 2024	CYTD Average Jan-Nov 2025
NSP	82	82	76	91	91	100	85	84	94	92	92	98	86	73	90
LSP	21	24	24	19	20	18	17	18	22	20	20	18	21	17	20

Releases from Close to Home Placement to Aftercare January 2022 – November 2025



CTH Aftercare Census October 2024 – October 2025



Calendar-Year-to-Date
Average

CYTD Jan -Oct 2024	CYTD Jan -Oct 2025
35	45

Appendix

Figure 1: SCR Intakes by Reporter Group
September 2024 – November 2024 and September 2025 – November 2025

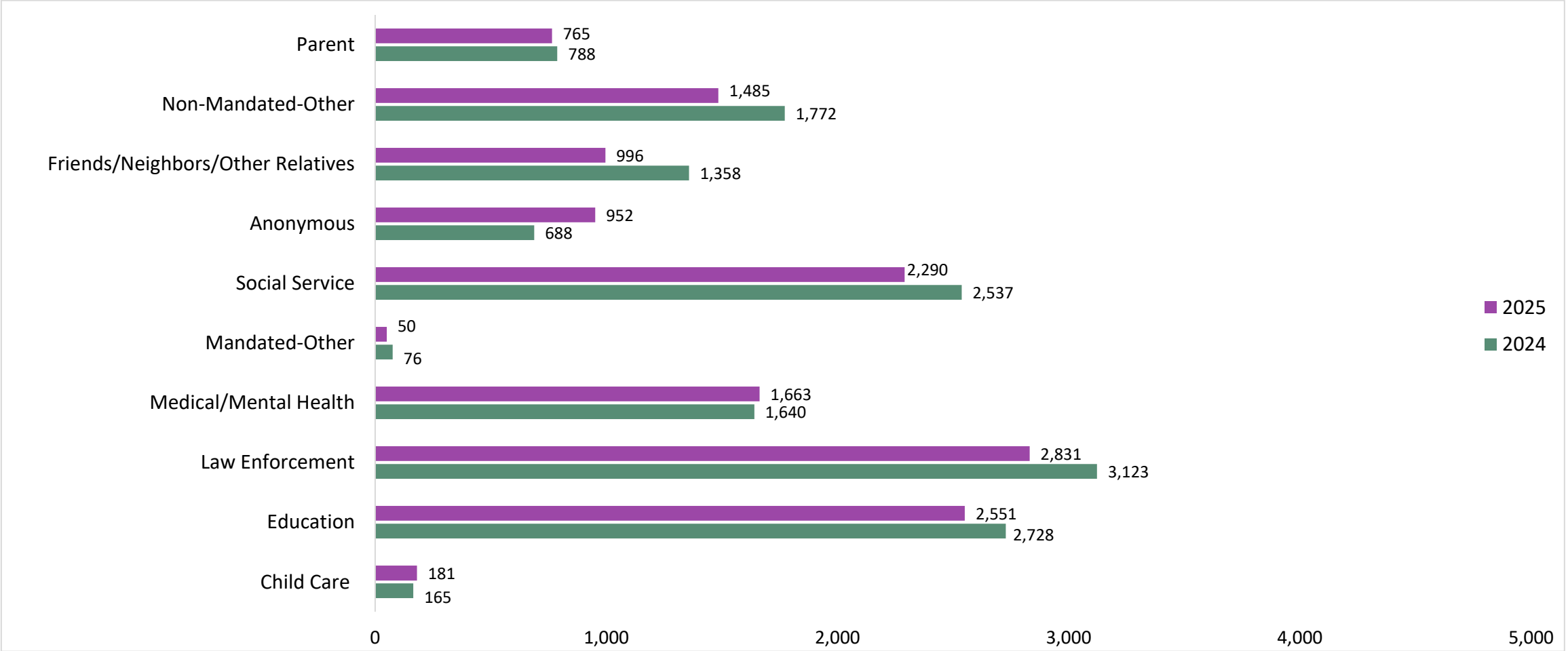
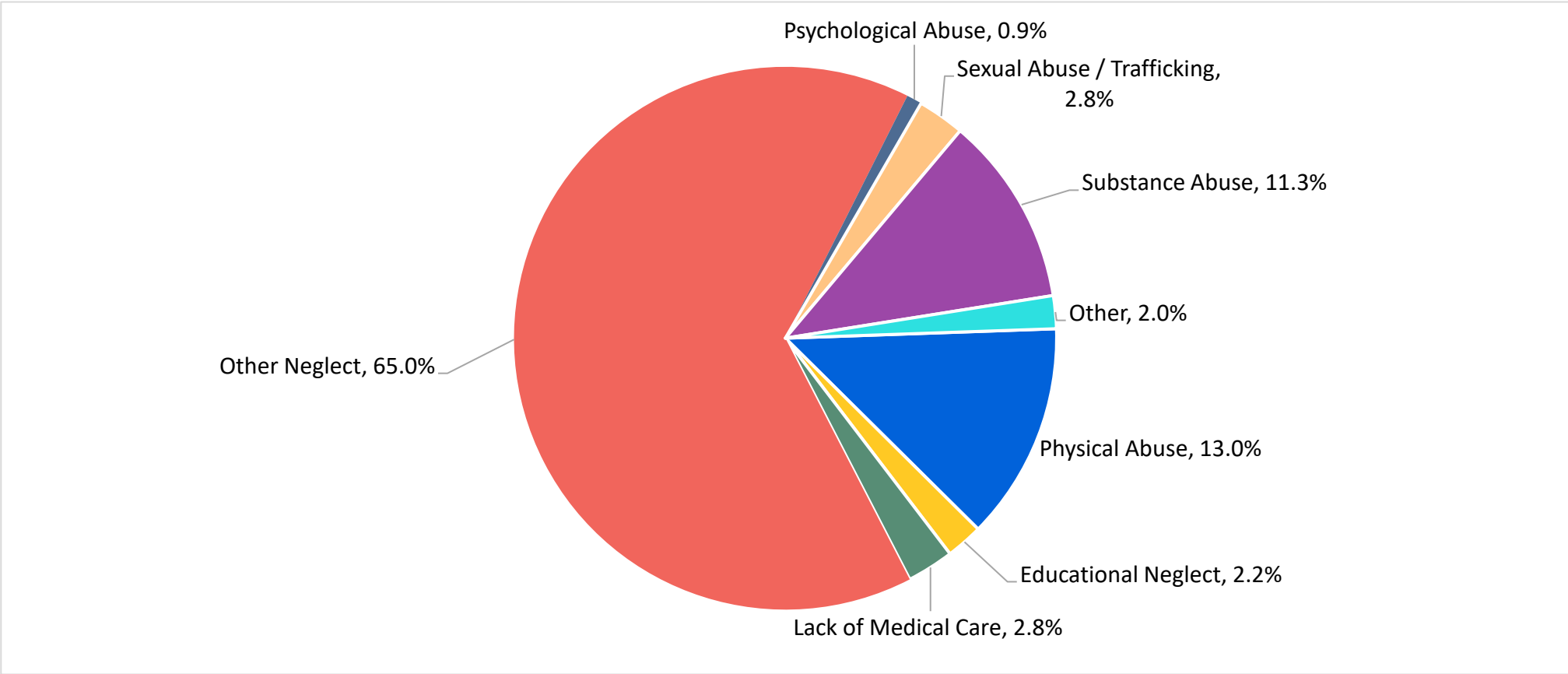


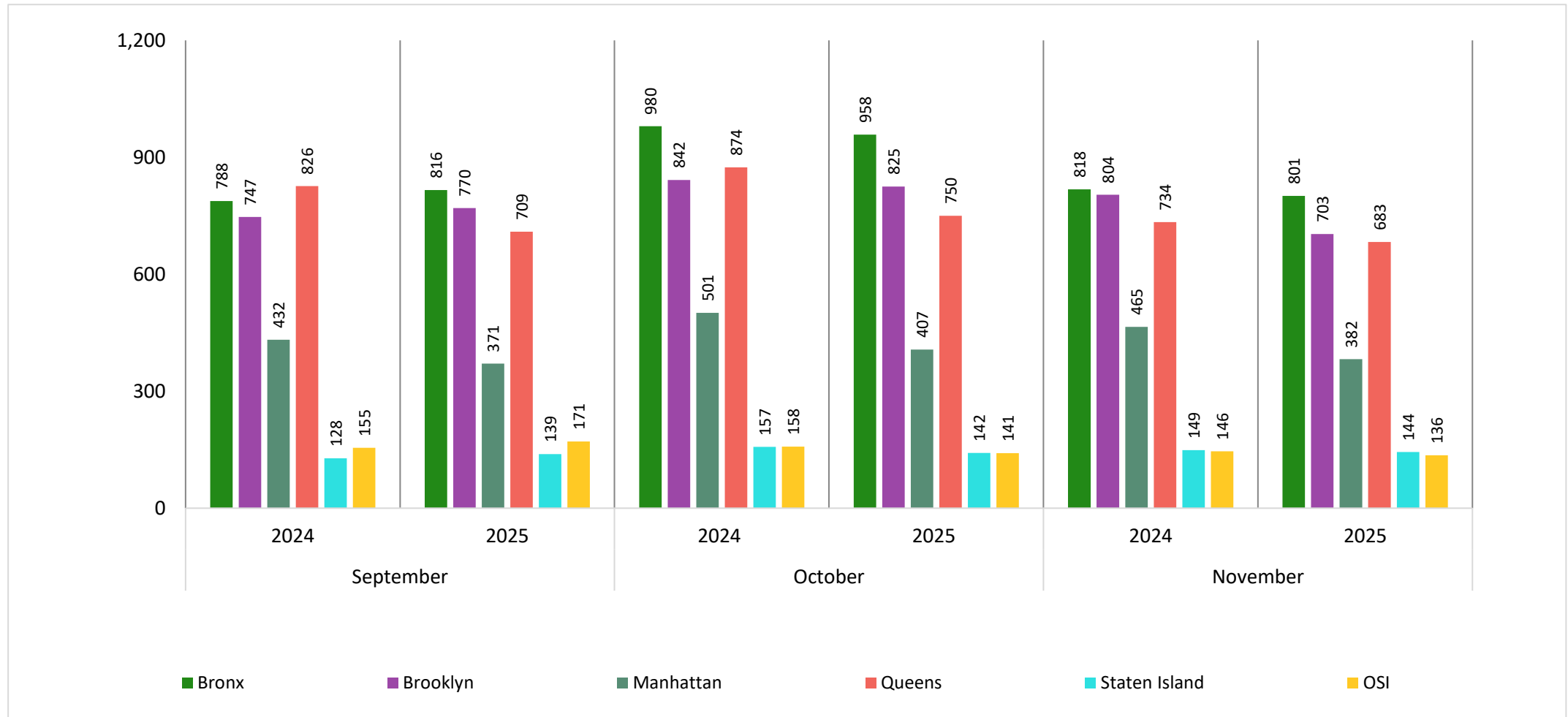
Figure 2: SCR Allegations in Investigations
September 2025 – November 2025



Total Allegations = 25,303

Note: Individual investigations often include multiple allegations. Allegations are grouped as follows: Physical Abuse - burn, fatality, fracture, choking, twisting, shaking, excessive corporal punishment, internal injuries, lacerations, bruises, welts, poisoning, noxious substances; Educational Neglect – educational neglect; Lack of Medical Care – lack of medical care; Other Neglect - inadequate guardianship, inadequate food, clothing, shelter, lack of supervision, malnutrition, failure to thrive, swelling, dislocations, sprains; Psychological Abuse - isolation, emotional neglect; Sexual Abuse/Trafficking – sexual abuse, sex trafficking; Substance Abuse - parental drug use, child drug use; and Other -abandonment, inappropriate custodial conduct, labor trafficking.

Figure 3: SCR Investigations by Borough
September 2024 – November 2024 and September 2025 – November 2025



**Table 1: SCR Investigations Changes by Borough
September 2024 – November 2024 and September 2025 – November 2025**

Month	Year	Bronx	Brooklyn	Manhattan	Queens	Staten Island	OSI	Other	Total
September	2024	788	747	432	826	128	155	115	3,191
	2025	816	770	371	709	139	171	148	3,124
	% Change	3.6%	3.1%	-14.1%	-14.2%	8.6%	10.3%	28.7%	-2.1%
October	2024	980	842	501	874	157	158	121	3,633
	2025	958	825	407	750	142	141	136	3,359
	% Change	-2.2%	-2.0%	-18.8%	-14.2%	-9.6%	-10.8%	12.4%	-7.5%
November	2024	818	804	465	734	149	146	121	3,237
	2025	801	703	382	683	144	136	118	2,967
	% Change	-2.1%	-12.6%	-17.8%	-6.9%	-3.4%	-6.8%	-2.5%	-8.3%
Total	2024	2,586	2,393	1,398	2,434	434	459	357	10,061
	2025	2,575	2,298	1,160	2,142	425	448	402	9,450
	% Change	-0.4%	-4.0%	-17.0%	-12.0%	-2.1%	-2.4%	12.6%	-6.1%

**Table 2: Child Welfare Prevention Cases: New and Closed
January 2023 - November 2025**

Year	Month	New Cases	Closed Cases
2023	Jan-23	532	404
	Feb-23	551	586
	Mar-23	678	569
	Apr-23	587	516
	May-23	632	658
	Jun-23	546	647
	Jul-23	479	571
	Aug-23	626	662
	Sep-23	494	537
	Oct-23	556	487
	Nov-23	595	512
	Dec-23	639	459
2024	Jan-24	683	378
	Feb-24	672	557
	Mar-24	650	592
	Apr-24	592	653
	May-24	590	820
	Jun-24	445	665
	Jul-24	517	671
	Aug-24	515	708
	Sep-24	489	501
	Oct-24	655	635
	Nov-24	574	573
	Dec-24	611	519
2025	Jan-25	682	499
	Feb-25	563	558
	Mar-25	631	683
	Apr-25	627	687
	May-25	583	689
	Jun-25	549	557
	Jul-25	637	696
	Aug-25	624	690
	Sep-25	620	545
	Oct-25	756	636
	Nov-25	615	557

Note: Data excludes transfers.

Table 3: Referrals to Child Welfare Prevention Services by Source
January 2023 - November 2025

Year	Month	Total Referrals	DCP	FC Agencies	PPRS Transfer	School	Self	Other Sources*
2023	Jan-23	830	78.4%	1.4%	9.3%	3.1%	4.6%	3.1%
	Feb-23	781	78.9%	2.3%	8.3%	2.4%	4.9%	3.2%
	Mar-23	940	79.3%	2.3%	9.4%	2.3%	4.0%	2.7%
	Apr-23	868	76.2%	2.3%	10.7%	0.8%	6.2%	3.8%
	May-23	1,040	69.2%	2.3%	17.2%	2.2%	5.2%	3.8%
	Jun-23	770	69.2%	2.3%	13.2%	3.4%	8.2%	3.6%
	Jul-23	803	77.8%	2.6%	10.6%	0.9%	3.7%	4.4%
	Aug-23	861	77.5%	1.0%	12.0%	0.7%	4.4%	4.4%
	Sep-23	792	76.5%	2.4%	9.8%	1.1%	6.3%	3.8%
	Oct-23	827	68.1%	2.3%	11.4%	3.3%	8.1%	6.9%
	Nov-23	814	65.5%	2.3%	9.5%	5.5%	9.5%	7.7%
	Dec-23	853	68.3%	1.9%	8.9%	4.1%	11.1%	5.6%
2024	Jan-24	983	70.3%	2.0%	7.8%	5.8%	9.1%	5.0%
	Feb-24	961	67.5%	2.5%	10.7%	5.1%	7.9%	6.2%
	Mar-24	918	70.9%	1.7%	12.6%	3.1%	6.9%	4.8%
	Apr-24	947	71.1%	2.2%	14.6%	3.4%	3.7%	5.1%
	May-24	953	71.5%	1.2%	15.6%	3.1%	4.1%	4.5%
	Jun-24	712	75.4%	1.5%	11.8%	1.8%	4.6%	4.8%
	Jul-24	861	69.5%	2.1%	15.0%	2.7%	6.3%	4.5%
	Aug-24	754	70.0%	2.4%	13.0%	2.1%	6.2%	6.2%
	Sep-24	784	71.3%	1.9%	9.2%	1.5%	8.9%	7.1%
	Oct-24	958	65.1%	1.7%	9.3%	9.3%	9.3%	5.3%
	Nov-24	800	62.0%	1.8%	10.0%	10.9%	8.8%	6.6%
	Dec-24	879	68.6%	2.2%	8.8%	8.3%	6.3%	5.9%
2025	Jan-25	952	66.0%	1.7%	7.8%	11.8%	6.1%	6.7%
	Feb-25	820	68.0%	2.4%	9.5%	7.7%	6.0%	6.3%
	Mar-25	938	66.0%	1.7%	11.4%	8.0%	5.9%	7.0%
	Apr-25	920	68.5%	2.5%	10.4%	7.3%	5.4%	5.9%
	May-25	838	71.1%	1.7%	9.1%	7.2%	5.8%	5.1%
	Jun-25	827	74.1%	2.1%	7.3%	4.8%	6.2%	5.6%
	Jul-25	936	73.6%	2.2%	9.3%	3.6%	4.9%	6.3%
	Aug-25	878	72.1%	2.8%	10.1%	1.1%	6.3%	7.5%
	Sep-25	911	66.8%	2.5%	9.4%	4.3%	8.7%	8.2%
	Oct-25	1,019	64.8%	2.1%	8.2%	7.8%	8.5%	8.6%
	Nov-25	831	62.1%	1.7%	9.4%	9.0%	9.7%	8.1%

Note: Data includes all referrals –
accepted and rejected

*Other Sources includes the Department of Homeless Services, Family Court, FAP, Hospitals and Medical facilities, the NYC Housing Authority, Probation, and Sponsor Agencies.