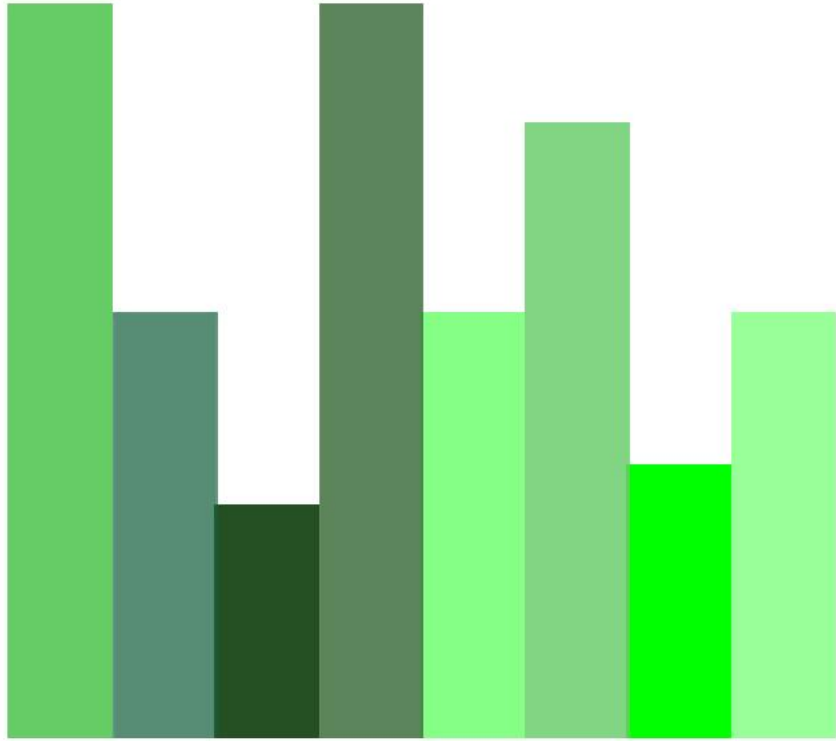


NYC Children

FLASH REPORT

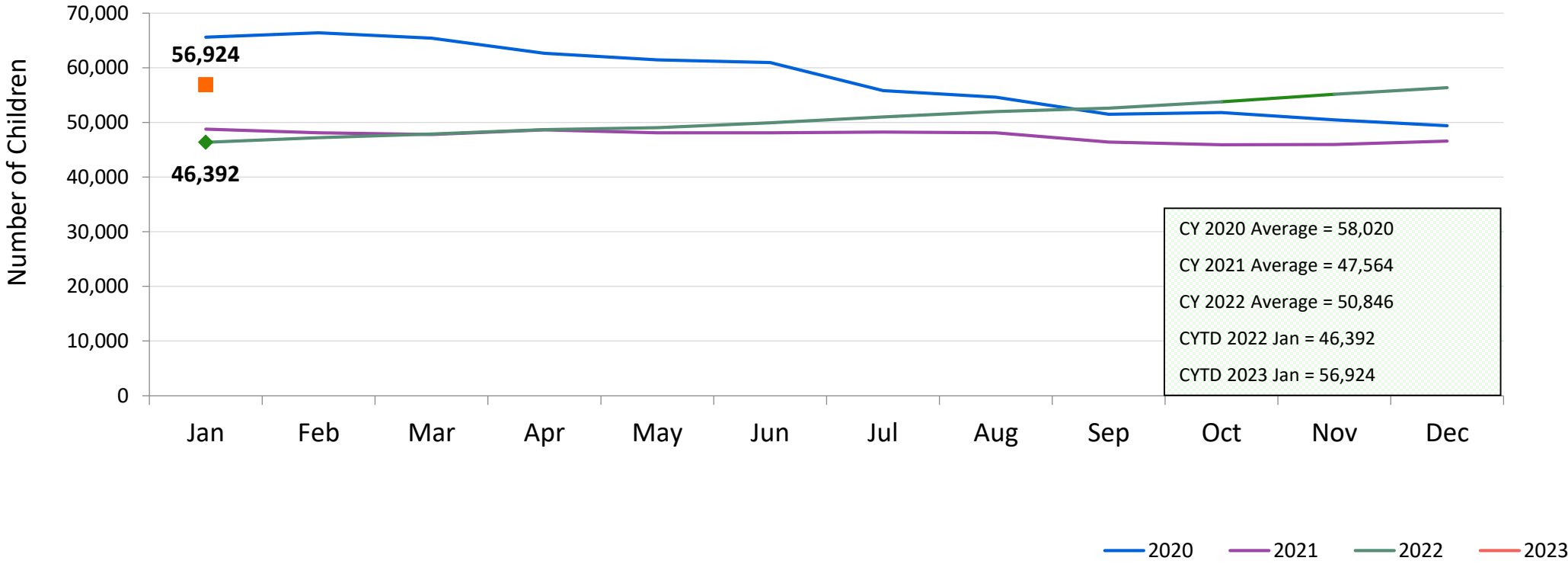
monthly indicators



FEBRUARY 2023

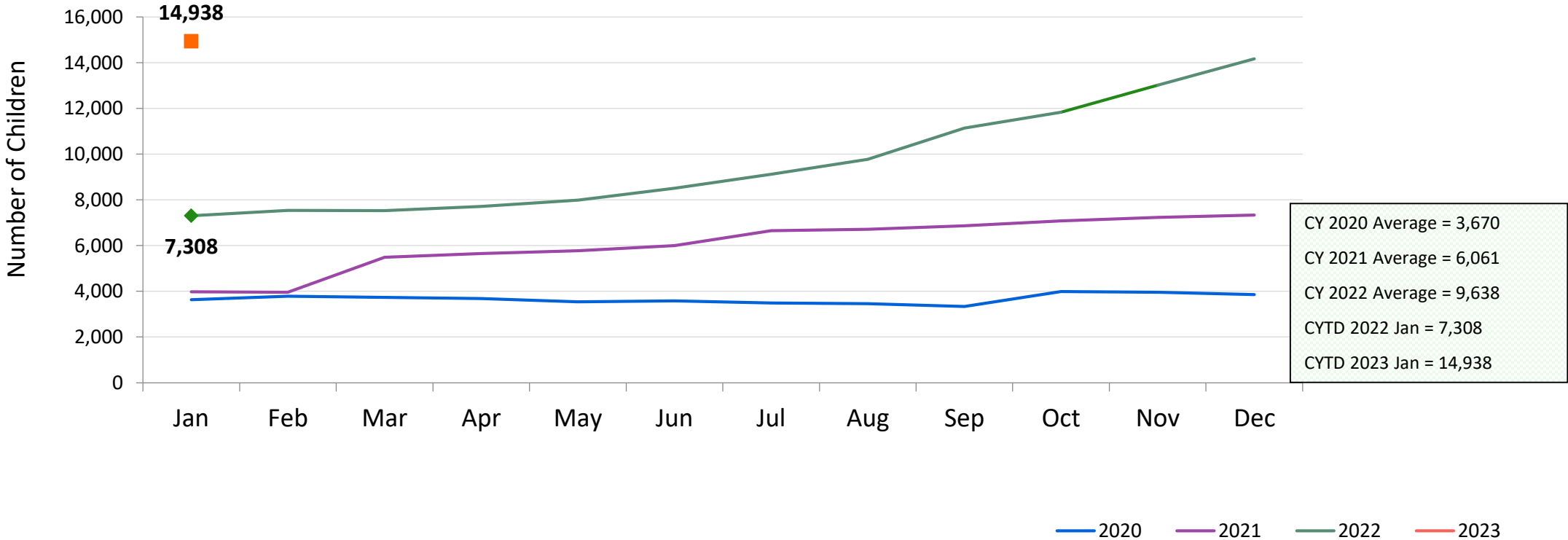


Children Using Vouchers for Child Care* January 2020 – January 2023 (End of Month)



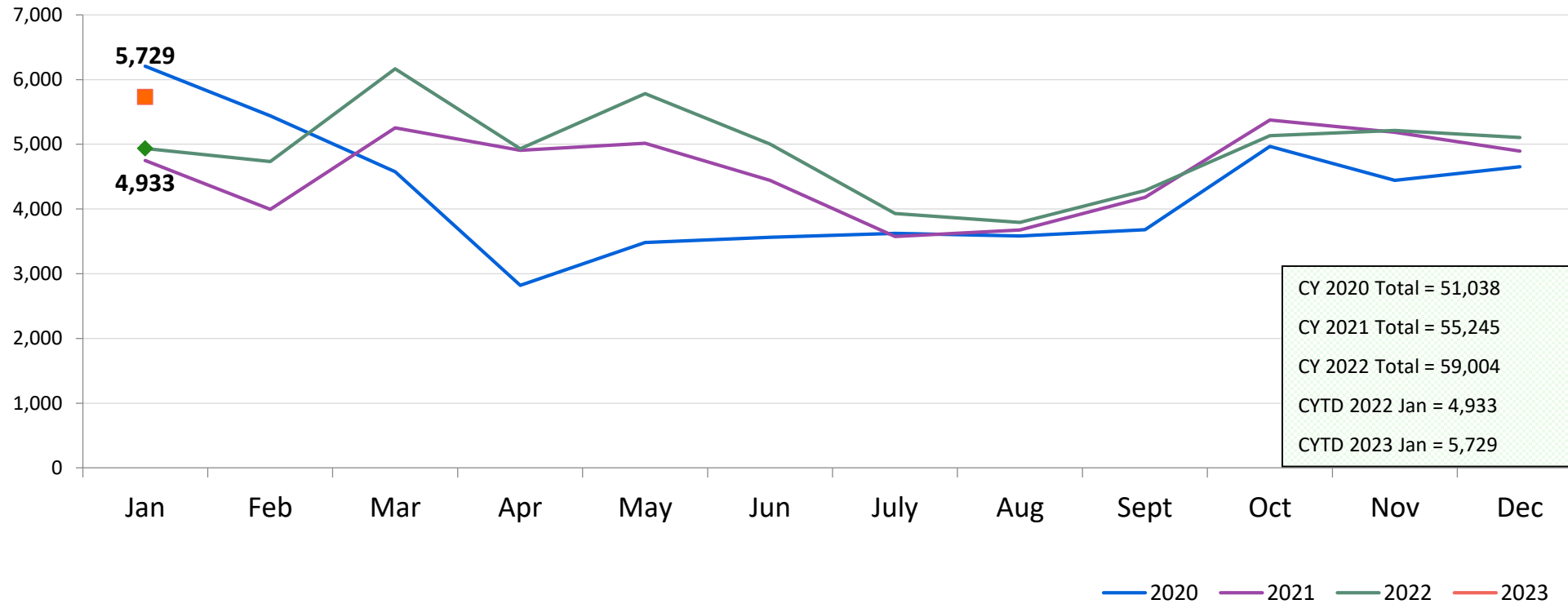
*This represents children enrollments in child care with HRA and ACS-issued vouchers.

Children Using ACS-Issued Low-Income Child Care Vouchers* January 2020 – January 2023



*This represents the subset of enrollments in child care with ACS-issued low-income vouchers funded by the NY State Child Care Block Grant (CCBG).

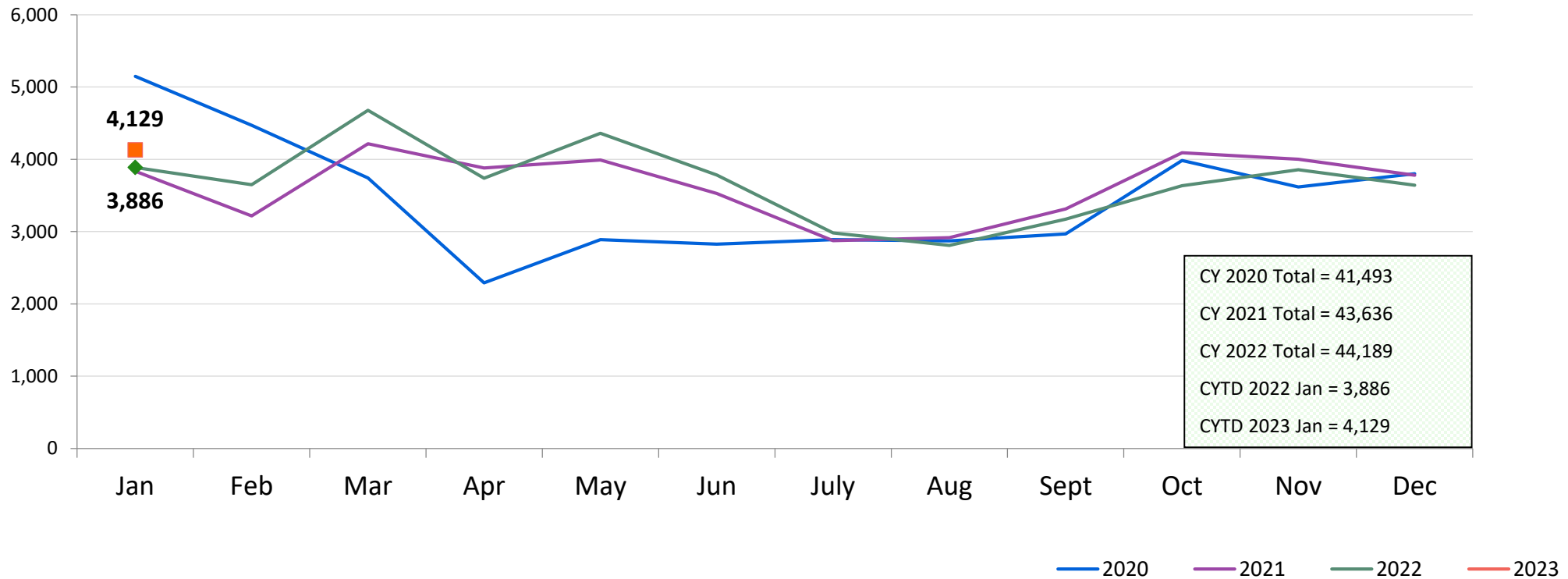
SCR Intakes January 2020 – January 2023



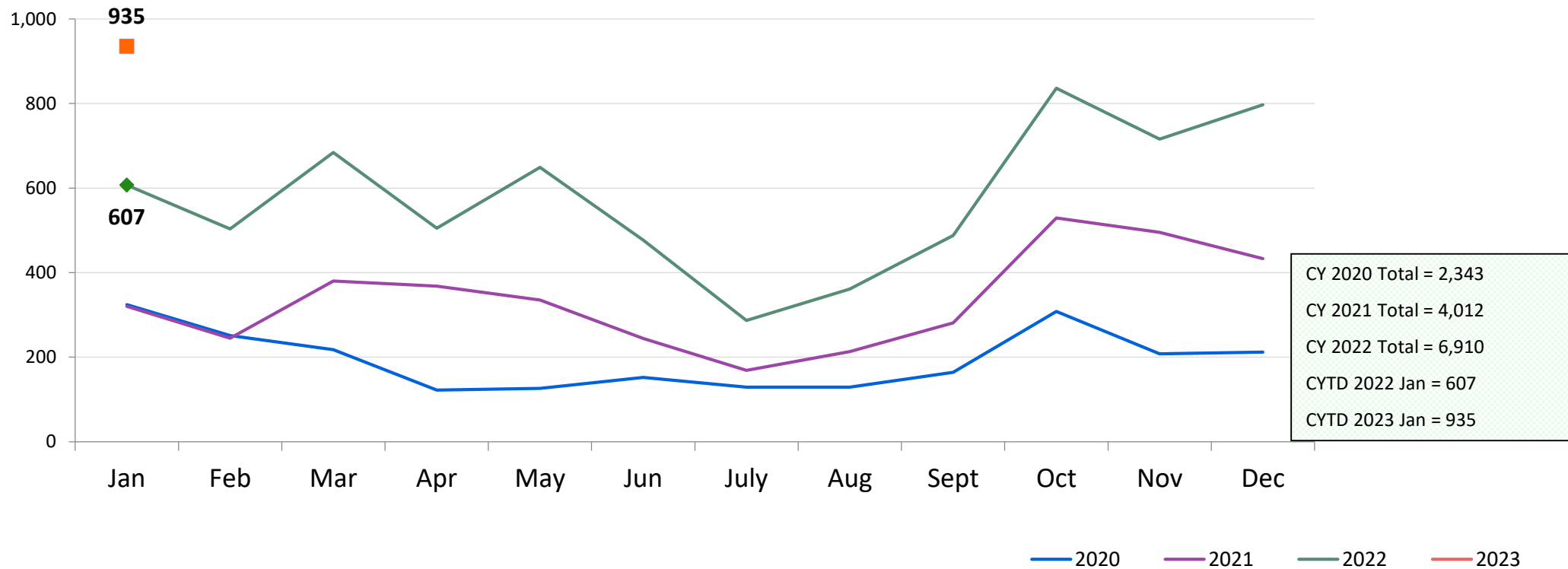
Note: SCR intakes can be followed by investigation or Collaborative Assessment Response.

See Pages 28 through 31 of the Appendix for supporting data.

SCR Consolidated Investigations January 2020 – January 2023

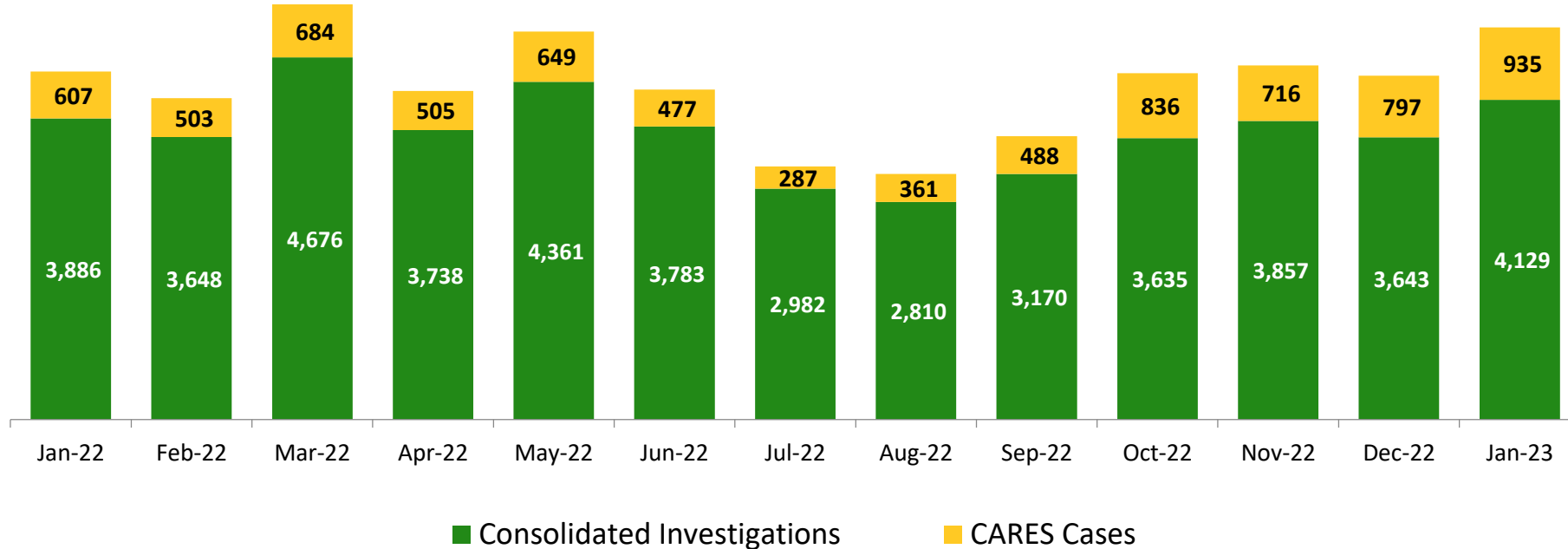


CARES* Cases January 2020 – January 2023



*CARES (Collaborative Assessment, Response, Engagement and Support , formerly known as FAR) is an alternative Child Protective response to some reports of child maltreatment. CARES does not require an investigation and determination of allegations and individual culpability for families reported to the SCR. It is an alternative approach to providing protection to children by engaging families in an assessment of child safety and of family needs, in finding solutions to family problems and in identifying informal and formal supports to meet their needs and increase their ability to care for their children.

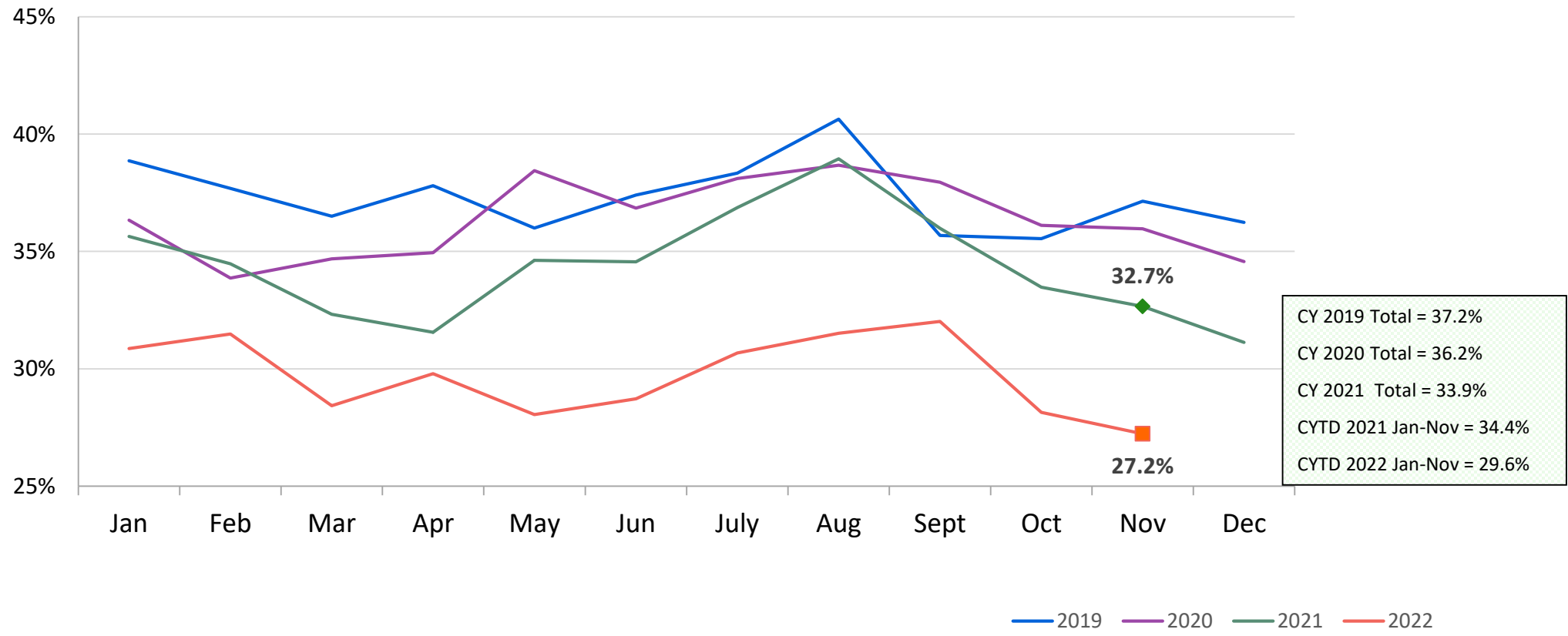
Protective Diagnostic Stages (Consolidated Investigations and CARES* Cases) January 2022 – January 2023



	Jan 2022	Feb 2022	Mar 2022	Apr 2022	May 2022	Jun 2022	Jul 2022	Aug 2022	Sep 2022	Oct 2022	Nov 2022	Dec 2022	Jan 2023
Number of Investigations & CARES cases	4,493	4,151	5,360	4,243	5,010	4,260	3,269	3,171	3,658	4,471	4,573	4,440	5,064

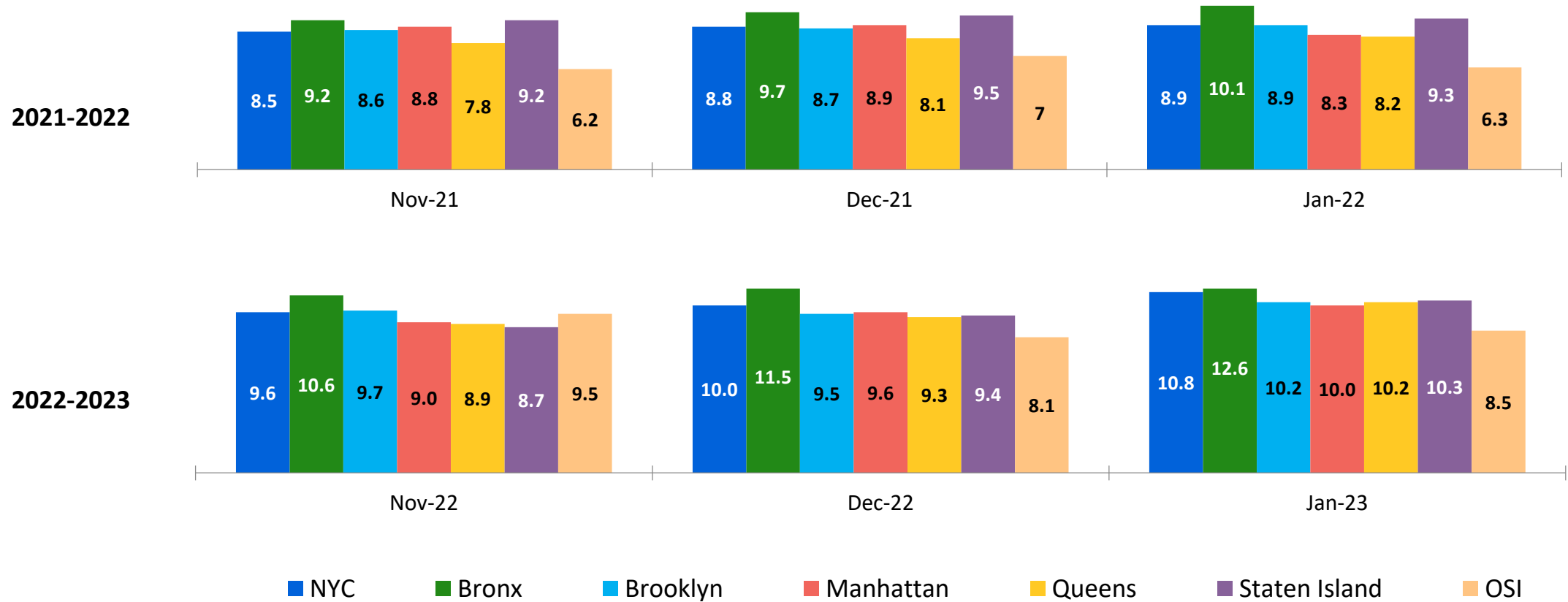
*CARES (Collaborative Assessment, Response, Engagement and Support, formerly known as FAR) is an alternative Child Protective response to some reports of child maltreatment. CARES does not require an investigation and determination of allegations and individual culpability for families reported to the SCR. It is an alternative approach to providing protection to children by engaging families in an assessment of child safety and of family needs, in finding solutions to family problems and in identifying informal and formal supports to meet their needs and increase their ability to care for their children.

SCR Investigation Indication Rate* January 2019 – November 2022



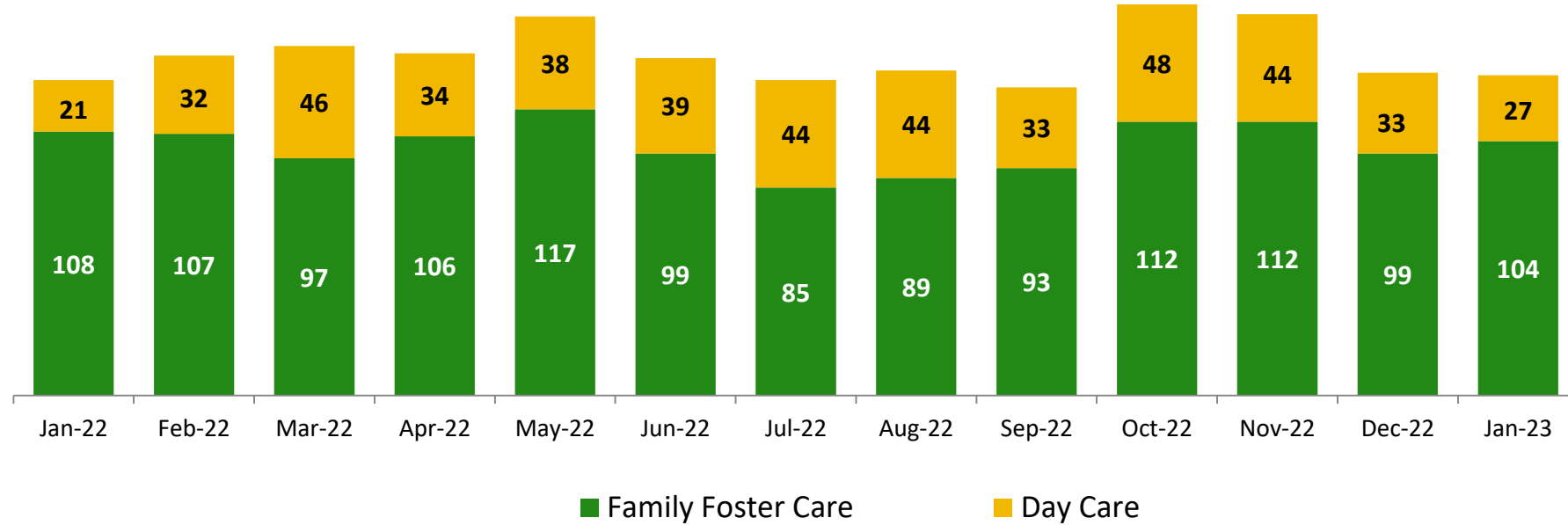
*Beginning January 1, 2022 the standard of evidence required to indicate an investigation changed from some credible evidence to a preponderance of evidence

Average Child Protection Caseload* November 2021 – January 2022 and November 2022 – January 2023



*includes all caseload carrying Child Protection Specialists (CPS) in investigative and CARES Units in Primary and Case Manager roles.

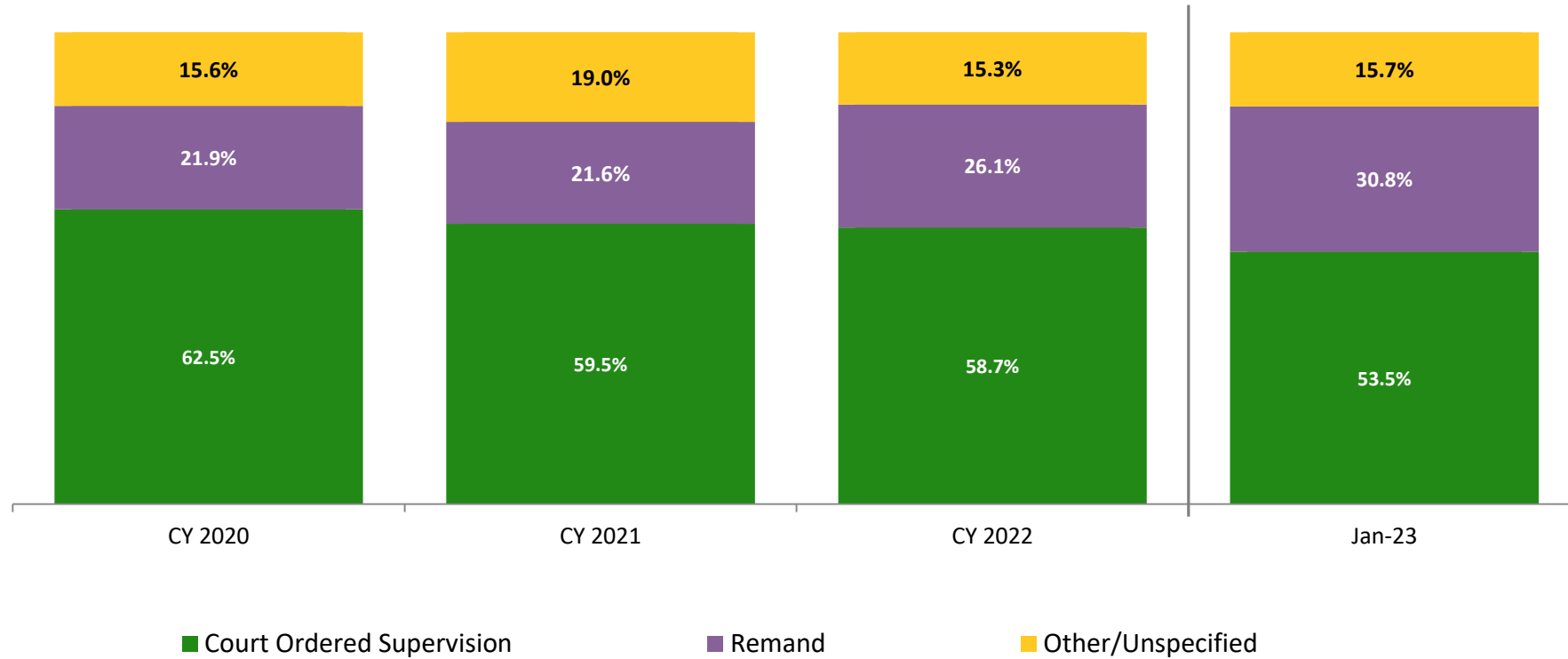
OSI Family Foster Care and Day Care* Investigations January 2022 – January 2023



	Jan 2022	Feb 2022	Mar 2022	Apr 2022	May 2022	Jun 2022	Jul 2022	Aug 2022	Sep 2022	Oct 2022	Nov 2022	Dec 2022	Jan 2023
Number of Investigations	129	139	143	140	155	138	129	133	126	160	156	132	131

*Day Care investigations include alleged abuse or maltreatment of children perpetrated by someone who cares for children in a setting that is not the child’s familial home and that requires state or local government approval and is subject to state laws, regulations, and oversight. This includes, but is not limited to, ACS/DOE Early Care and Education programs. Foster care investigations include alleged abuse or maltreatment of children in foster care and children of foster parents.

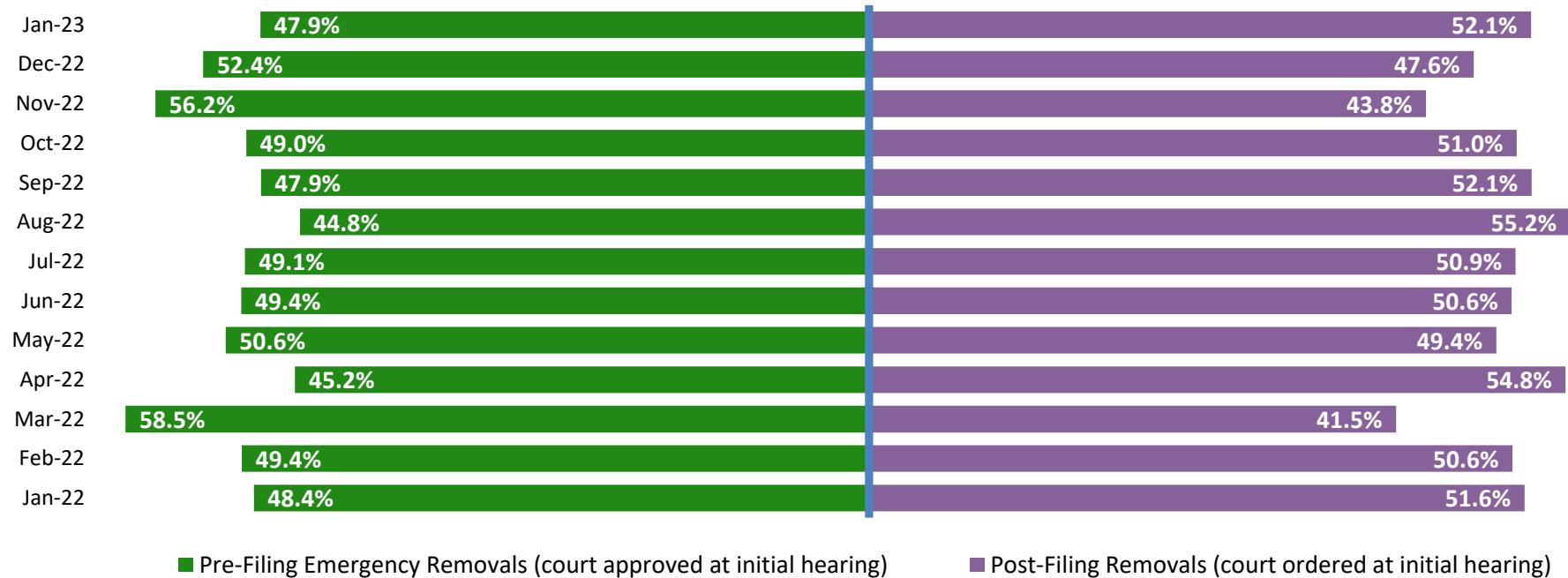
Article 10 Filings and Initial Hearing Outcomes, Children CY 2020 – January 2023



	CY 2020	CY 2021	CY 2022	Jan 2023
Children with Article 10 Filings	8,217	8,143	6,994	542

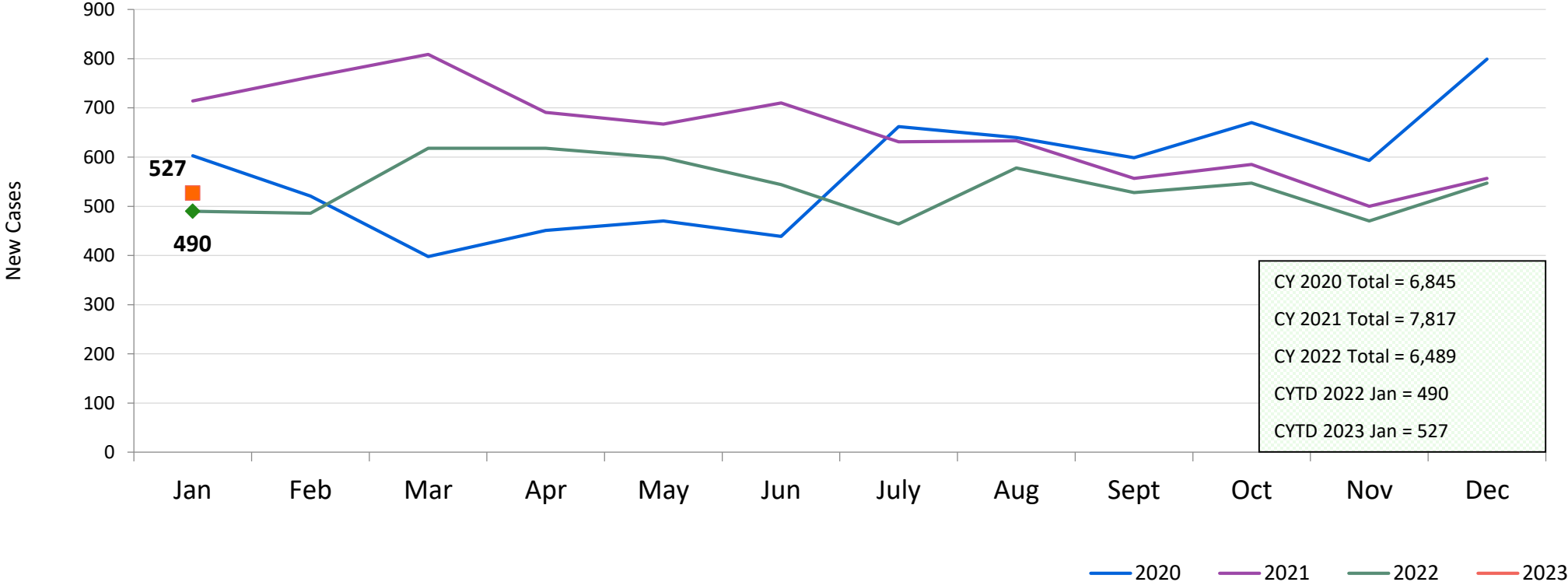
Note: The category "Other/Unspecified" includes released with no supervision, no order issued and no outcome specified.

Remands Approved at Initial Article 10 Hearing by Removal Status January 2022 – January 2023



	Jan 2022	Feb 2022	Mar 2022	Apr 2022	May 2022	Jun 2022	Jul 2022	Aug 2022	Sep 2022	Oct 2022	Nov 2022	Dec 2022	Jan 2023
Children Remanded	126	158	176	166	158	172	114	125	163	153	146	166	167

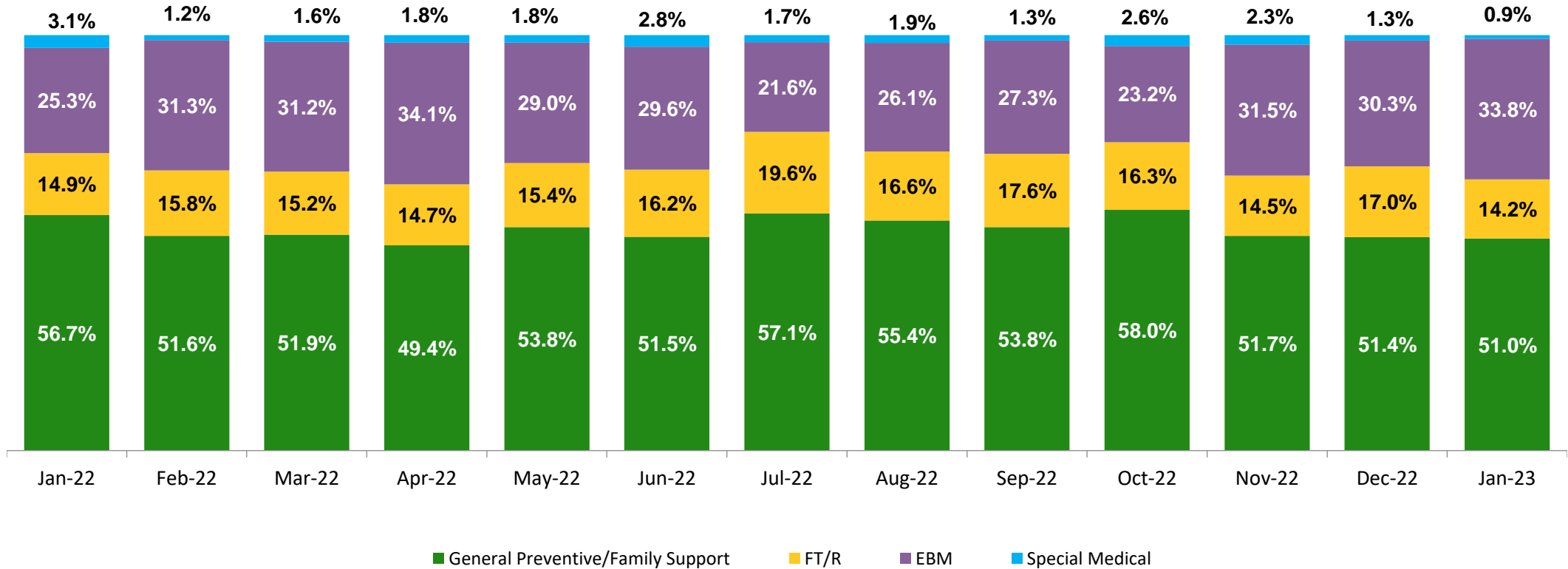
New Child Welfare Prevention Cases January 2020 – January 2023



*New prevention cases do not include cases transferred from one preventive program to another.

See Pages 32 and 33 of the Appendix for supporting data.

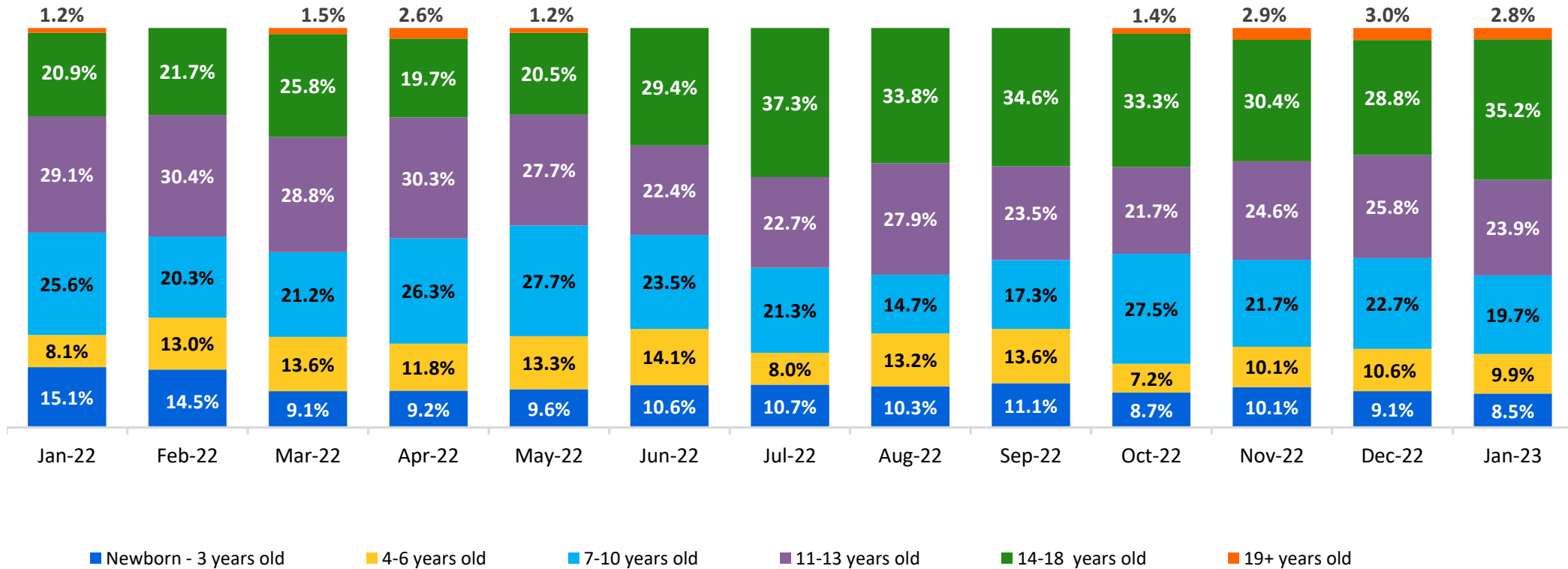
New Child Welfare Prevention Cases by Program Type* January 2022 – January 2023



	Jan 2022	Feb 2022	Mar 2022	Apr 2022	May 2022	Jun 2022	Jul 2022	Aug 2022	Sep 2022	Oct 2022	Nov 2022	Dec 2022	Jan 2023
Number of New Preventive Cases	490	486	618	618	599	544	464	578	528	547	470	547	527

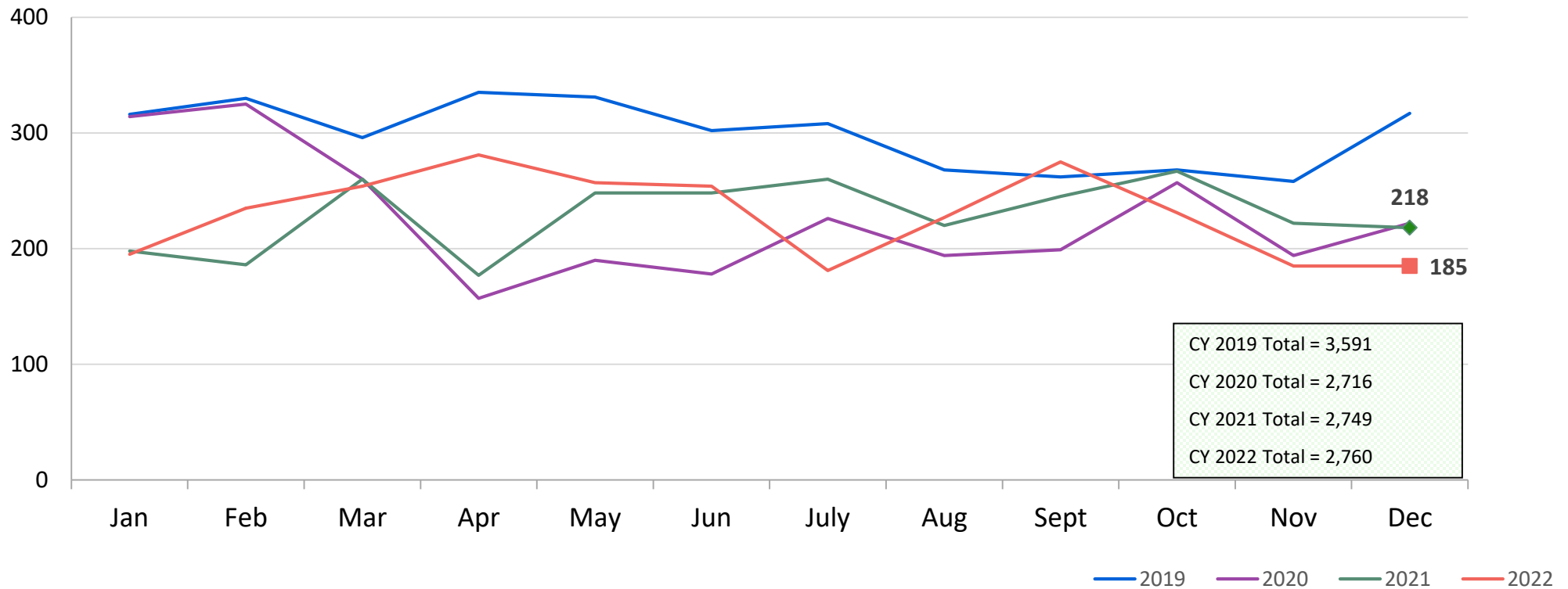
* New prevention cases do not include cases transferred from one prevention program to another.

Average Daily Children's Center Population January 2022 – January 2023

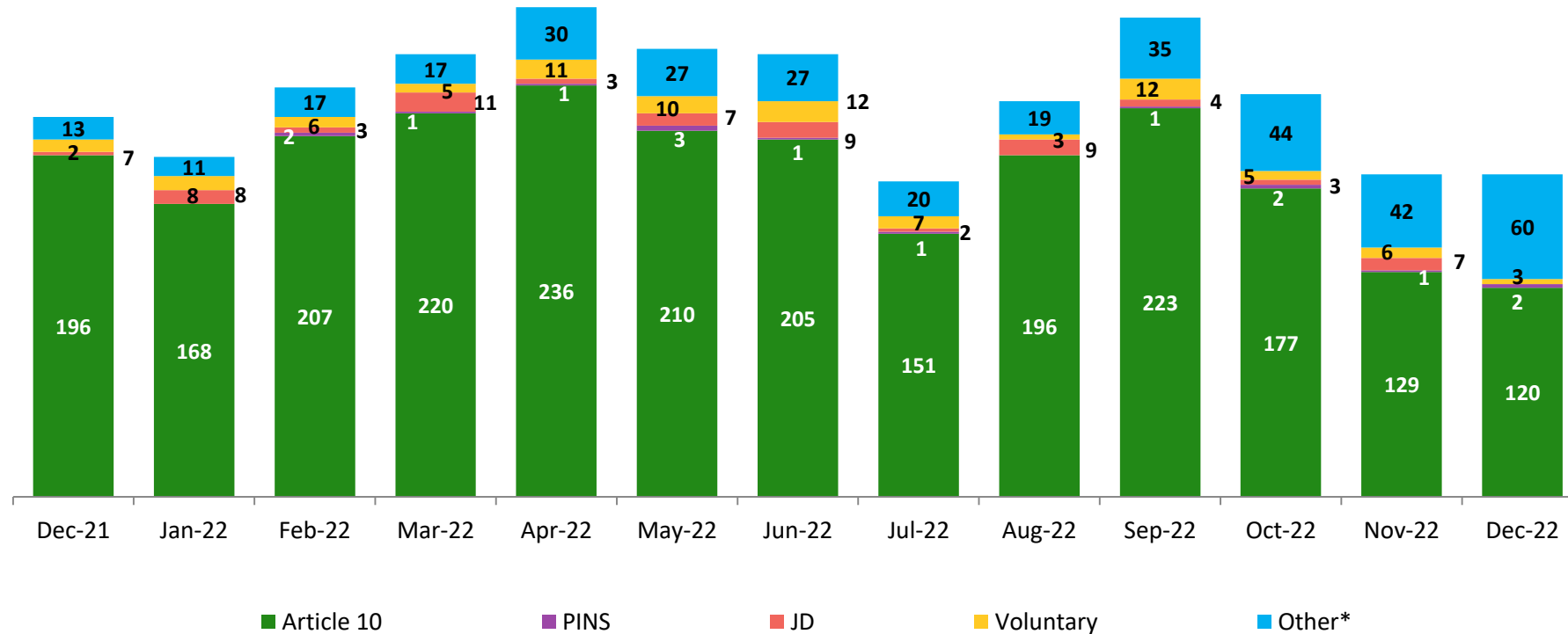


	Jan 2022	Feb 2022	Mar 2022	Apr 2022	May 2022	Jun 2022	Jul 2022	Aug 2022	Sep 2022	Oct 2022	Nov 2022	Dec 2022	Jan 2023
Average Number of Children	86	69	66	76	83	85	75	68	81	69	69	66	71

New Placements of Children into Foster Care January 2019 – December 2022



Reason for New Placements of Children into Foster Care December 2021 – December 2022



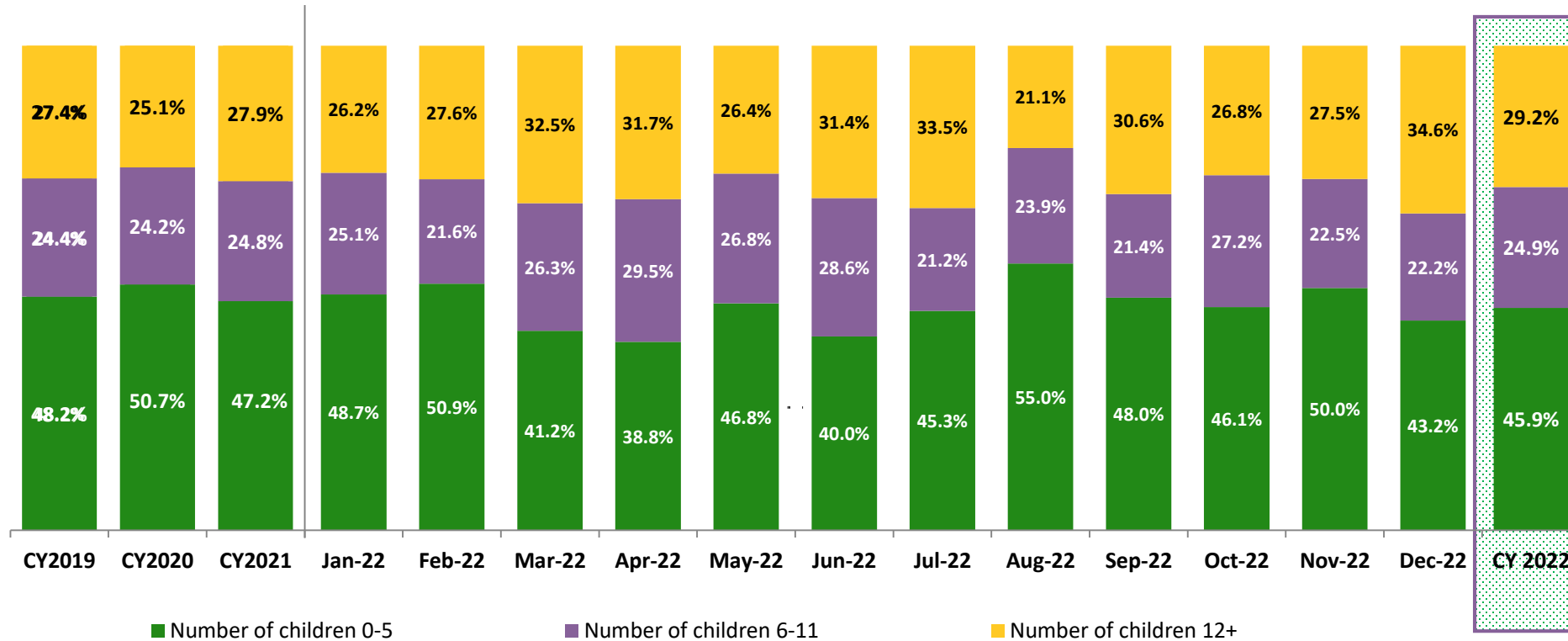
Calendar-Year-to-Date

	CY 2021	CY 2022
Other*	216	349
Voluntary	58	88
JD	46	66
PINS	3	15
Article 10	2,426	2,242

	Dec 2021	Jan 2022	Feb 2022	Mar 2022	Apr 2022	May 2022	Jun 2022	Jul 2022	Aug 2022	Sep 2022	Oct 2022	Nov 2022	Dec 2022	CY 2021	CY 2022
Number of Placements	218	195	235	254	281	257	254	181	227	275	231	185	185	2,749	2,760

*Due to data entry lags, many placements currently categorized as "Other" in recent months will be re-categorized in future Flash reports.

New Placements of Children into Foster Care* by Age CY 2019 – December 2022

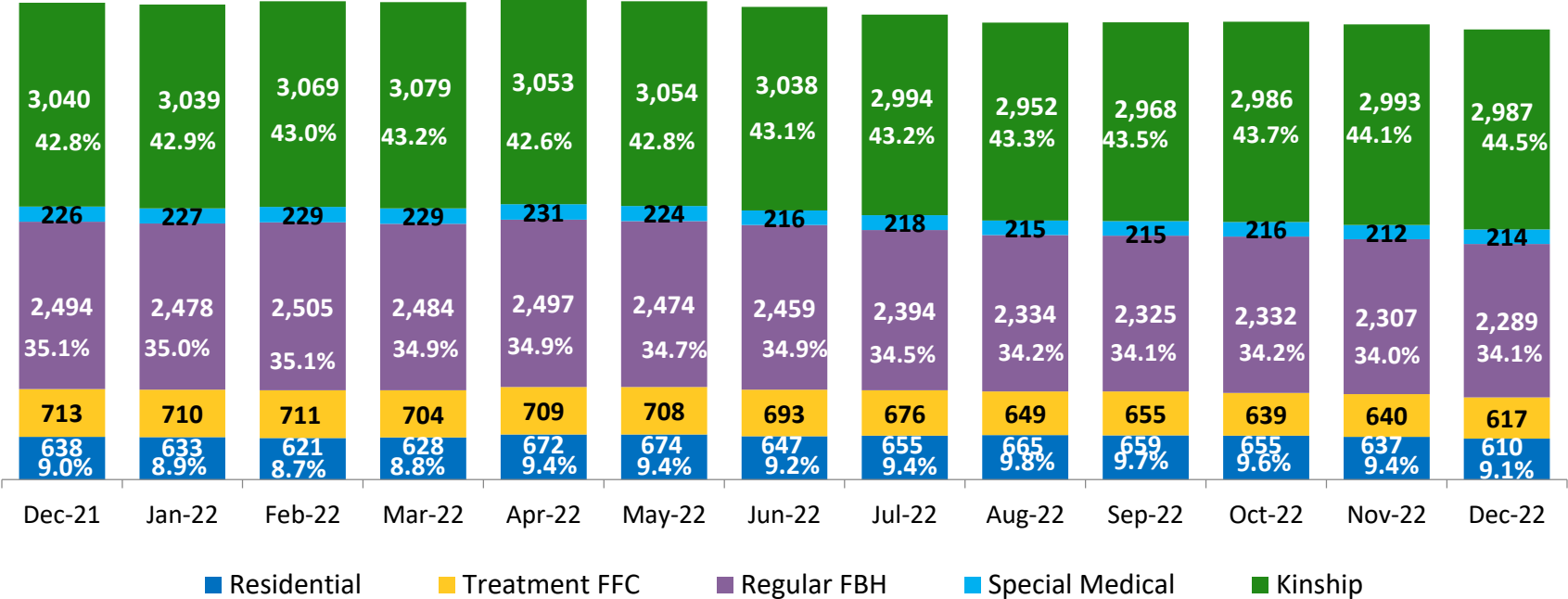


	CY 2019	CY 2020	CY 2021	Jan 2022	Feb 2022	Mar 2022	Apr 2022	May 2022	Jun 2022	Jul 2022	Aug 2022	Sep 2022	Oct 2022	Nov 2022	Dec 2022	CY 2022
Number of Placements	3,497	2,643	2,703	187	232	243	278	250	245	179	218	271	228	178	185	2,694

*Excludes CTH placements.

Children in Foster Care*

December 2021 – December 2022 (end of month)



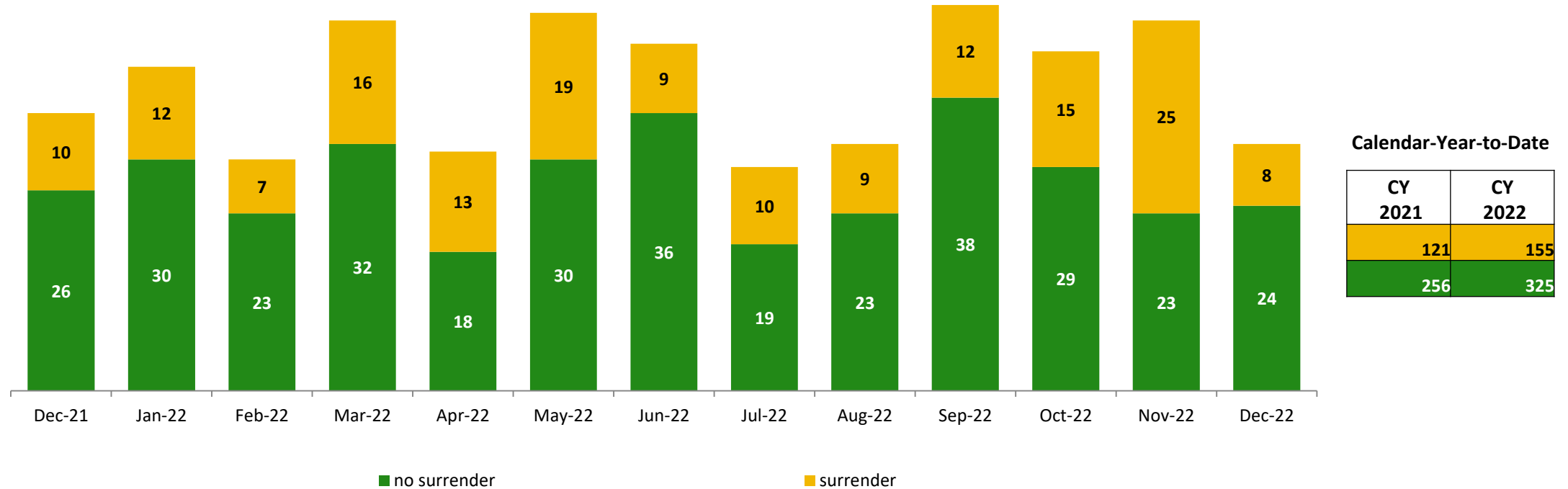
Calendar-Year-to-Date (Average)

CY 2021	CY 2022
3,108	3,018
229	221
2,599	2,407
753	676
651	646

	Dec 2021	Jan 2022	Feb 2022	Mar 2022	Apr 2022	May 2022	Jun 2022	Jul 2022	Aug 2022	Sep 2022	Oct 2022	Nov 2022	Dec 2022	CY 2021	CY 2022
Number in Foster Care	7,111	7,087	7,135	7,124	7,162	7,134	7,053	6,937	6,815	6,822	6,828	6,789	6,717	7,339	6,967

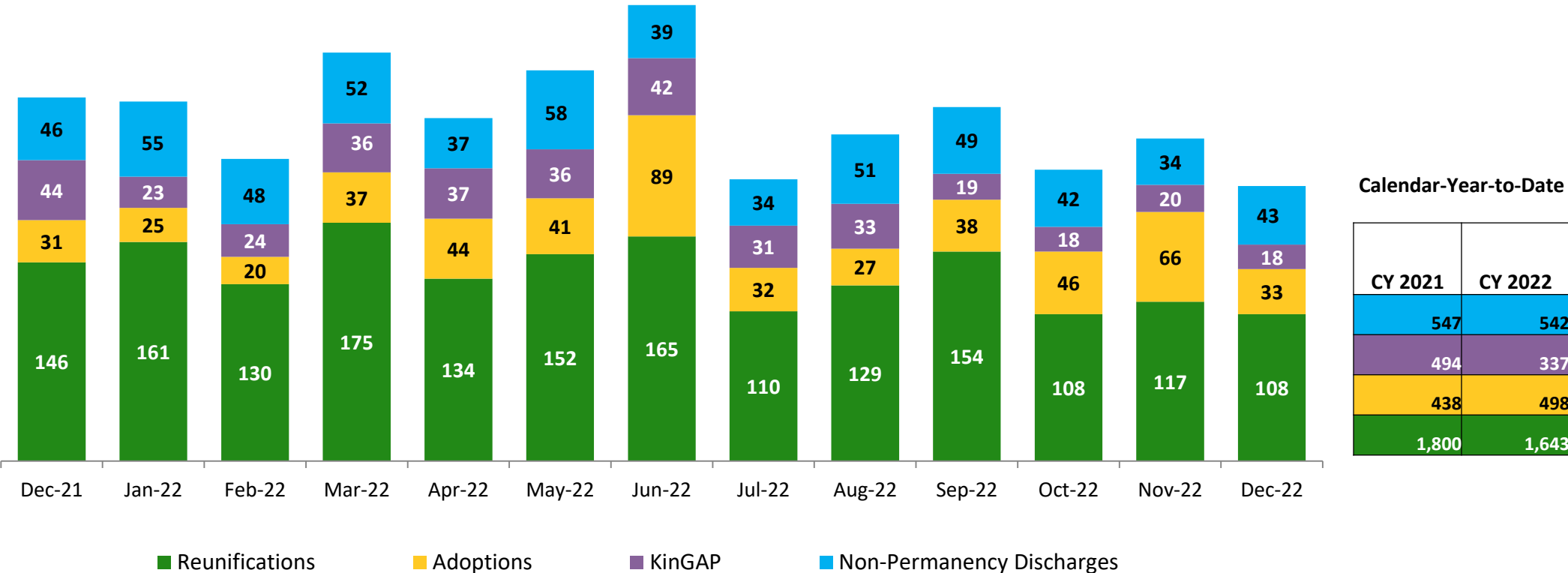
*Excludes CTH placements and includes children in 24 hour care and approximately 60 young children who are living in foster homes or residential care facilities with their mothers who are in foster care (8D children).

Children Freed for Adoption, Surrender by at Least One Parent December 2021 – December 2022



	Dec 2021	Jan 2022	Feb 2022	Mar 2022	Apr 2022	May 2022	Jun 2022	Jul 2022	Aug 2022	Sep 2022	Oct 2022	Nov 2022	Dec 2022	CY 2021	CY 2022
Number Freed for Adoption	36	42	30	48	31	49	45	29	32	50	44	48	32	377	480

Permanency and Non-Permanency* Discharges from Foster Care** December 2021 – December 2022

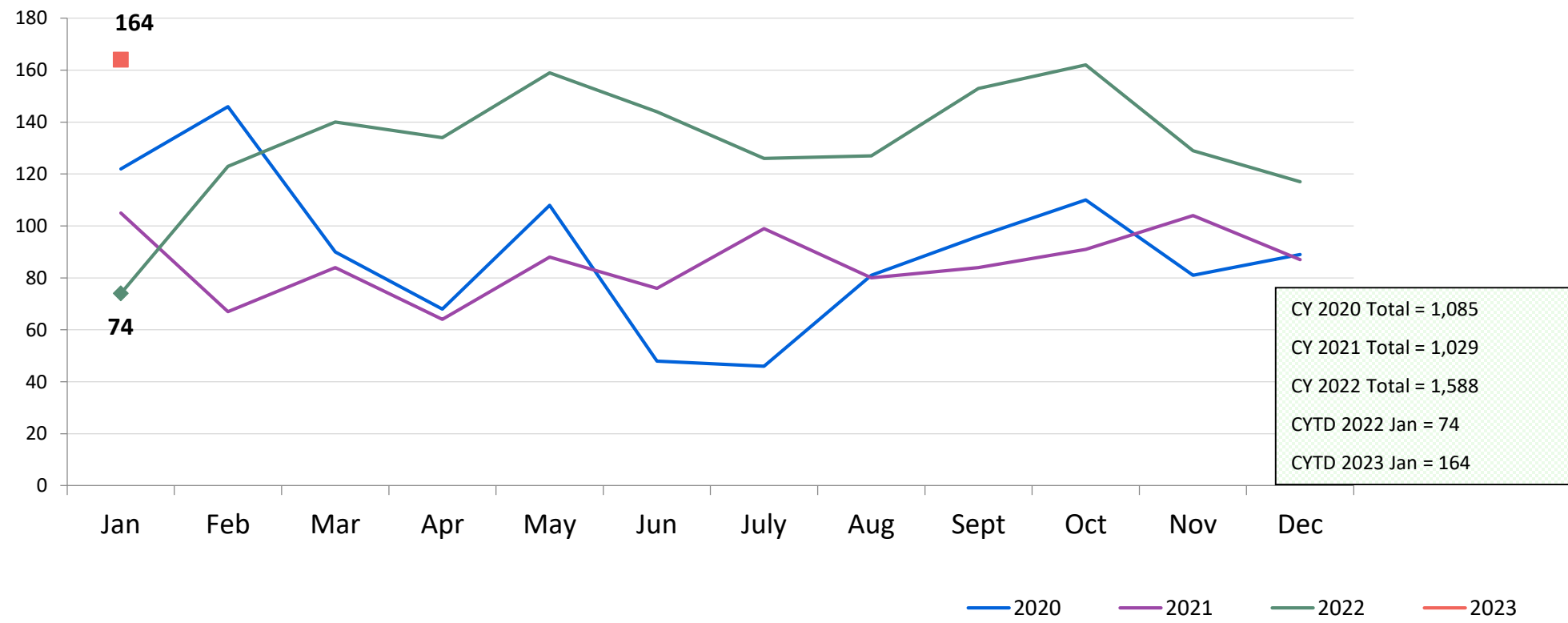


	Dec 2021	Jan 2022	Feb 2022	Mar 2022	Apr 2022	May 2022	Jun 2022	Jul 2022	Aug 2022	Sep 2022	Oct 2022	Nov 2022	Dec 2022	CY 2021	CY 2022
Number of Discharges	267	264	222	300	252	287	335	207	240	260	214	237	202	3,279	3,020

*Non-permanency discharges include AWOL, APPLA (youth 18-20 years old discharged to self and youth who reached 21 while in care), and other discharge destinations such as psychiatric institutions and correctional facilities and discharges with unspecified destinations.

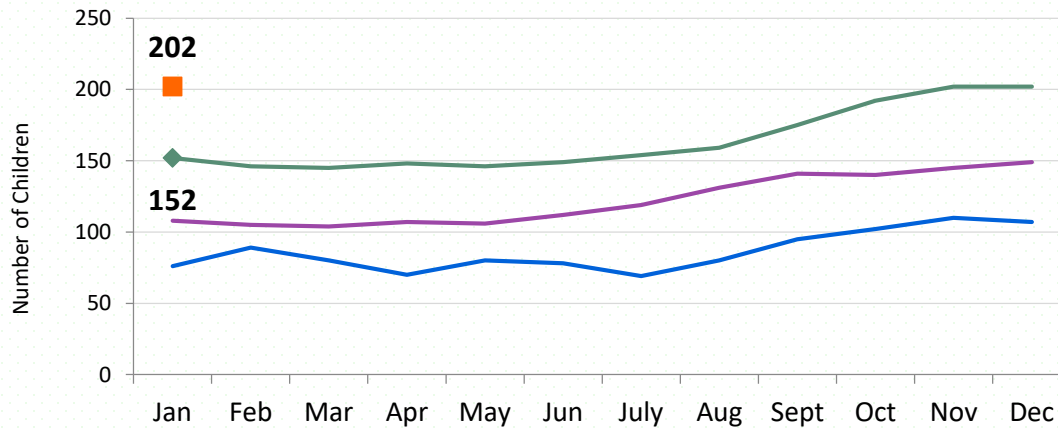
**Excludes discharges of youth from CTH placements.

Total Monthly Admissions to Detention January 2020 – January 2023

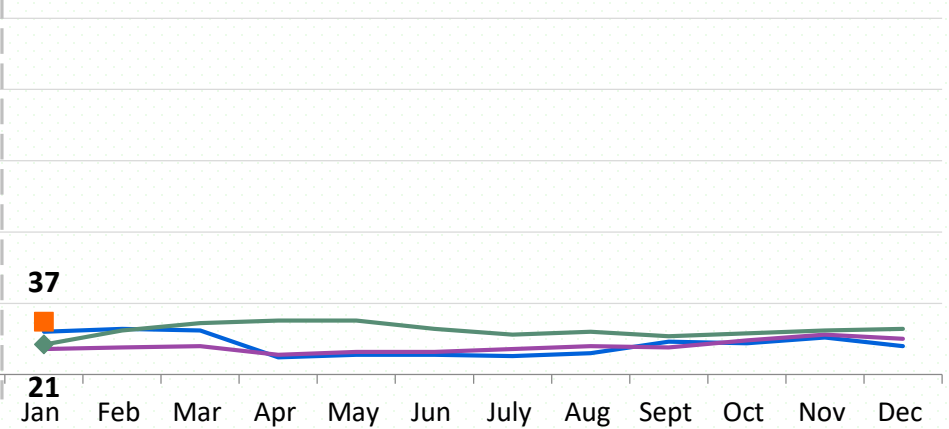


Detention Monthly Average Daily Population January 2020 – January 2023

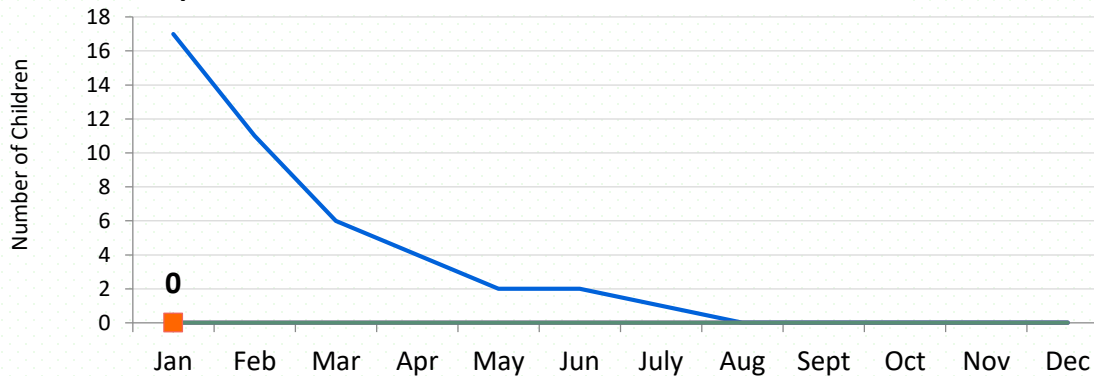
Secure Detention and Specialized Secure Detention
(Crossroads and Horizon January 2020 - present)



Non-Secure Detention

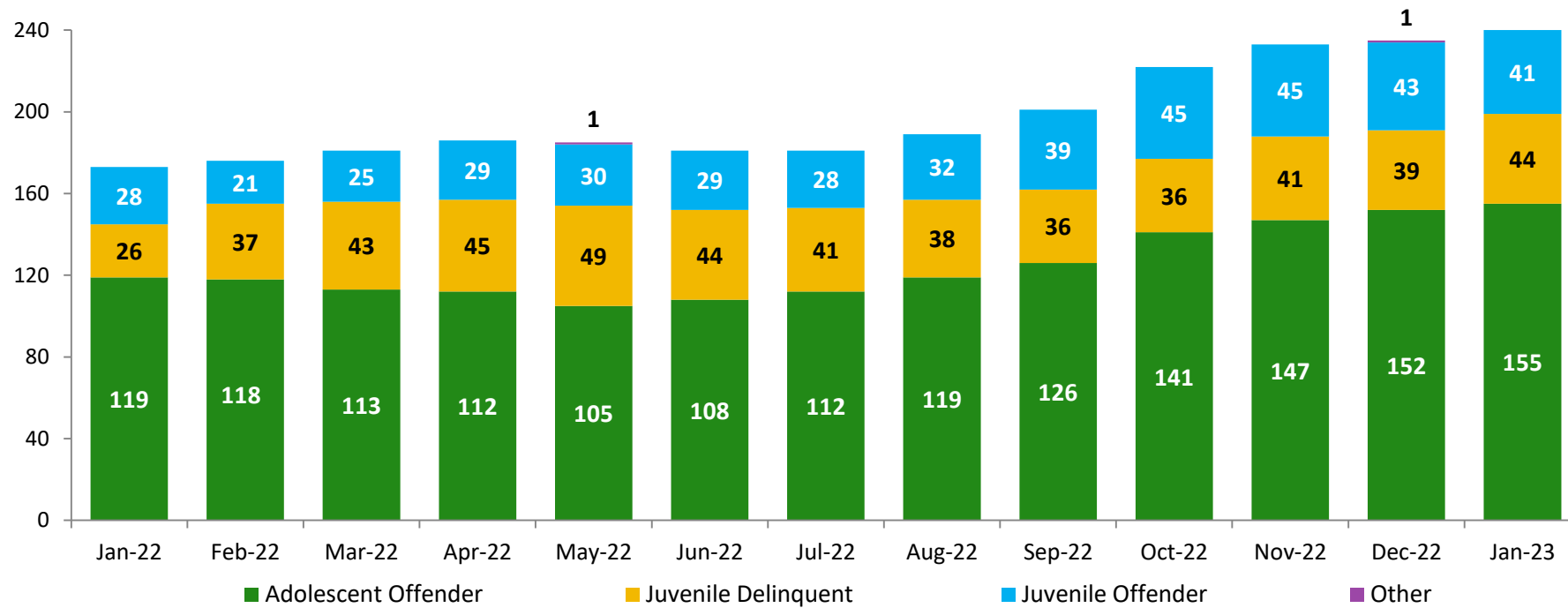


Specialized Juvenile Detention (Horizon pre-Raise the Age)*



	CYTD Jan 2022	CYTD Jan 2023
Secure Detention and Specialized Secure Detention	152.4	202.3
Non-Secure Detention	20.7	37.3
Specialized Juvenile Detention	0.0	0.0

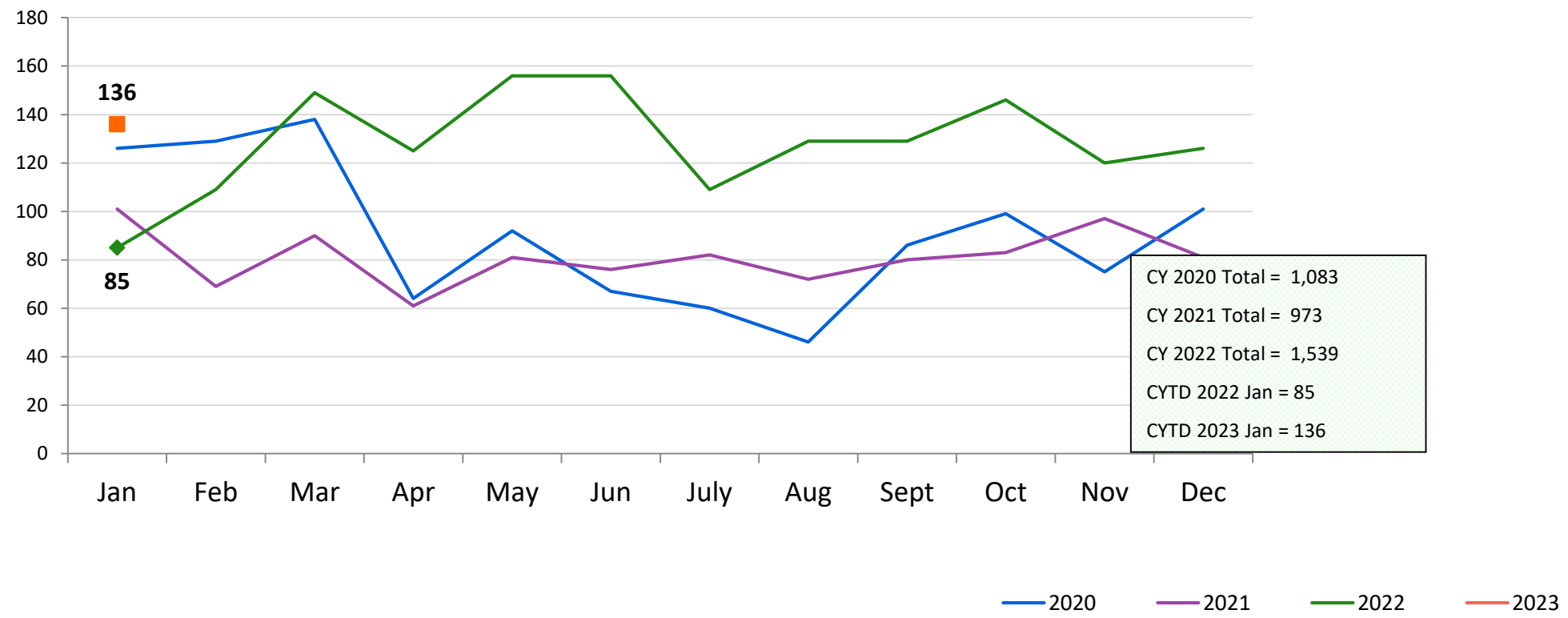
Detention Total Monthly Average Daily Population by Case Type* January 2022 – January 2023



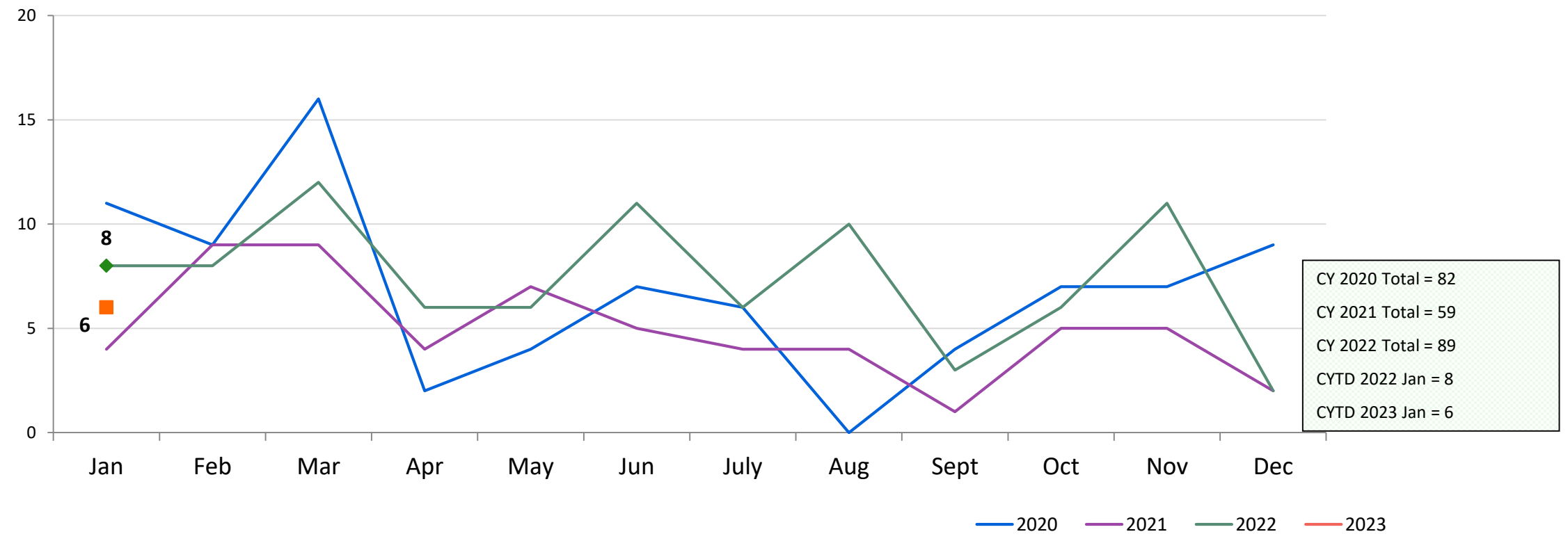
Total Average Daily Population												
Jan 2022	Feb 2022	Mar 2022	Apr 2022	May 2022	Jun 2022	Jul 2022	Aug 2022	Sep 2022	Oct 2022	Nov 2022	Dec 2022	Jan 2023
173	177	181	186	184	181	182	189	201	221	232	234	240

*Case Type definitions: Adolescent Offender (AO) is a person 16 or 17 years of age charged with a felony; Juvenile Delinquent (JD) is a person 7-15 years of age who has committed an act which would be considered a crime if the person were old enough and capable of being treated as an adult. Sixteen year olds charged with a misdemeanor are also JDs; Juvenile Offender (JO) a person 13-15 years of age with a serious violent felony charge; and Other case type includes youth detained for other authorities and ACS warrants.

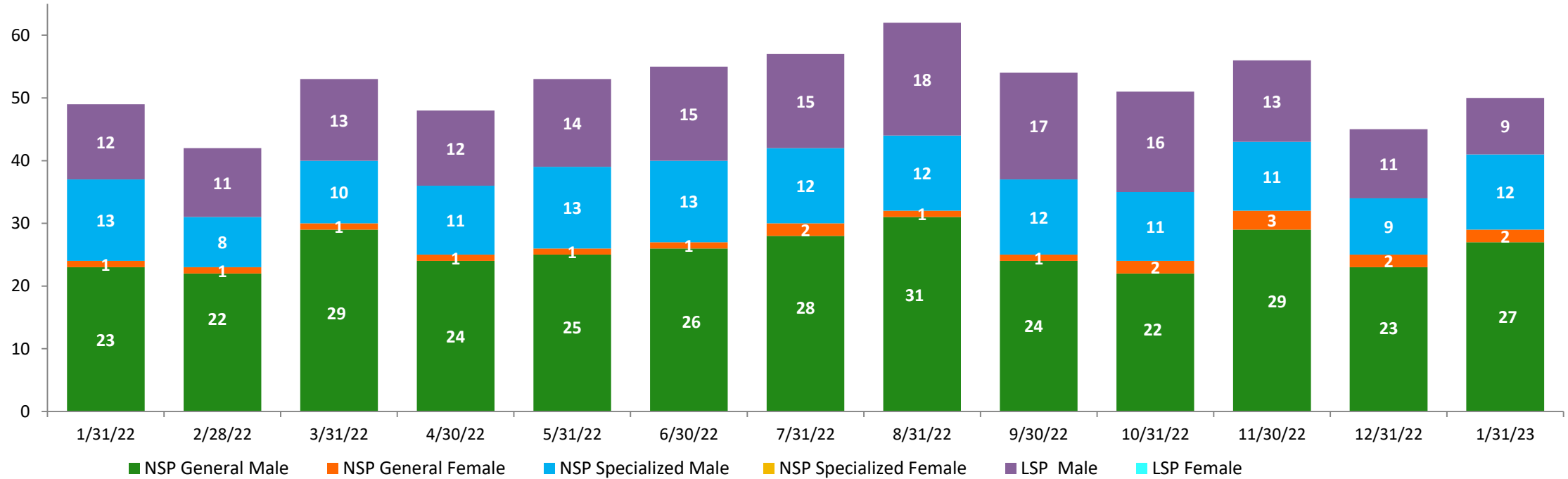
Total Monthly Releases from Detention January 2020 – January 2023



Close to Home Admissions January 2020 – January 2023

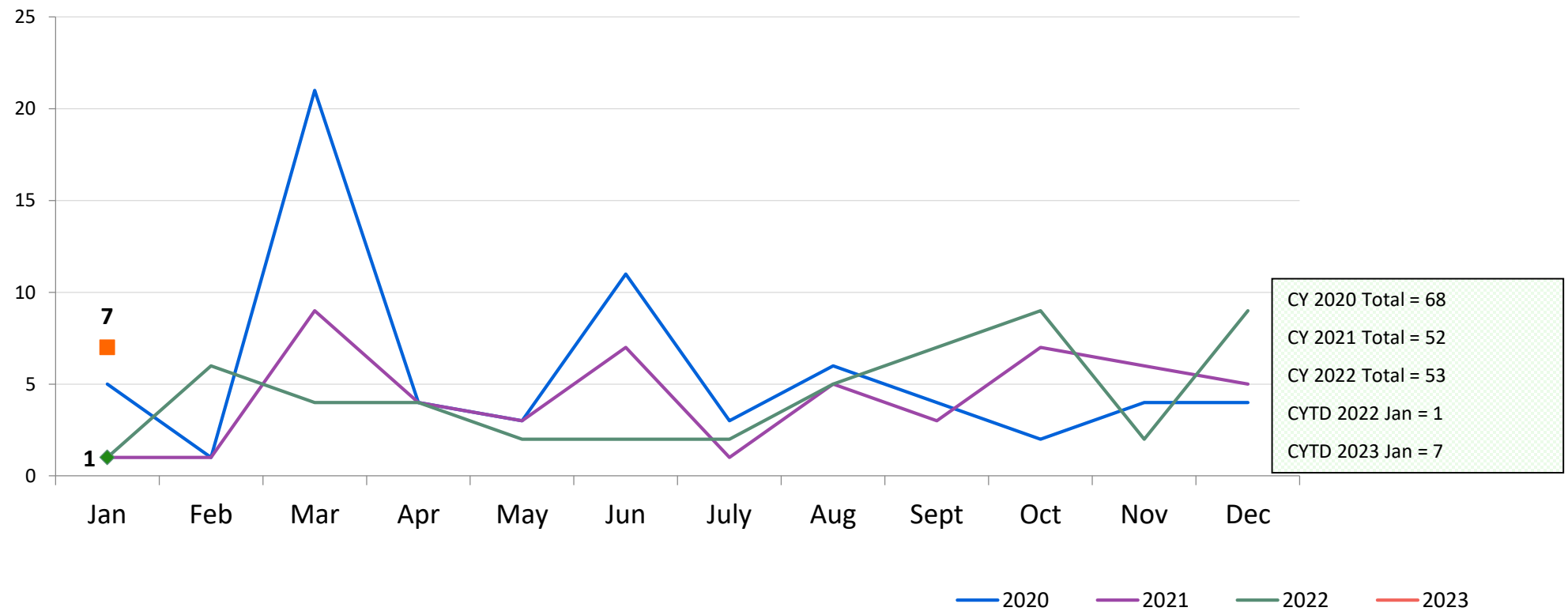


CTH Placement, in 24-hour Care January 2022 – January 2023 (end of month)

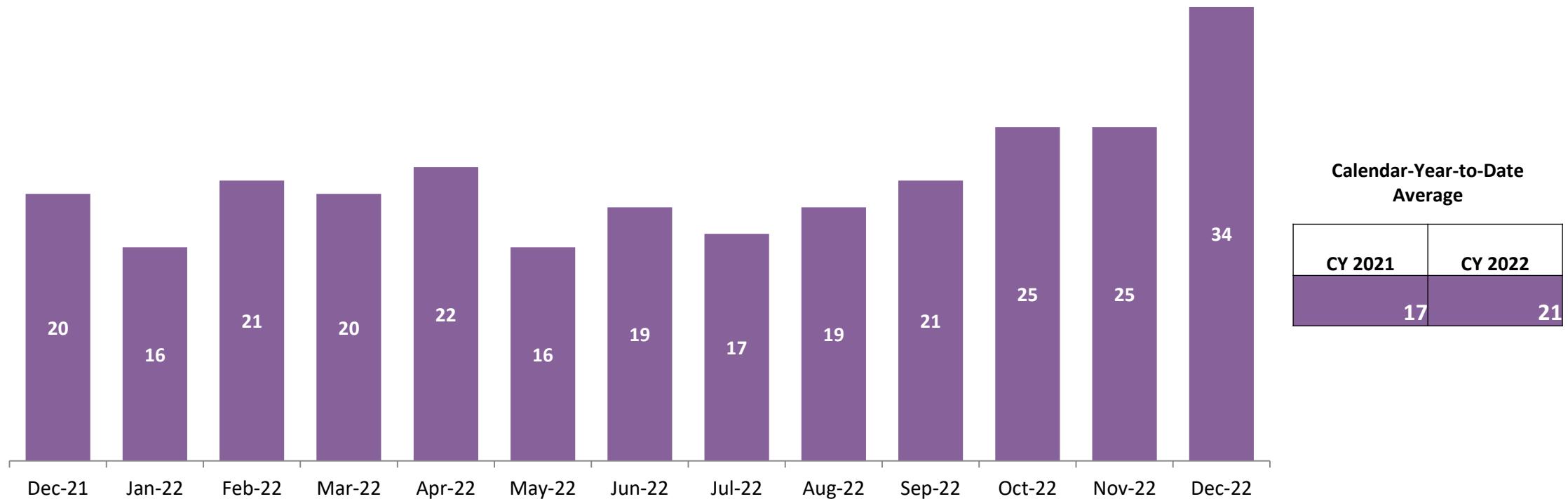


Number in Placement		1/31/22	2/28/22	3/31/22	4/30/22	5/31/22	6/30/22	7/31/22	8/31/22	9/30/22	10/31/22	11/30/22	12/31/22	1/31/23
NSP		37	31	40	36	39	40	42	44	37	35	43	34	41
LSP		12	11	13	12	14	15	15	18	17	16	13	11	9

Releases from Close to Home Placement to Aftercare January 2020 – January 2023

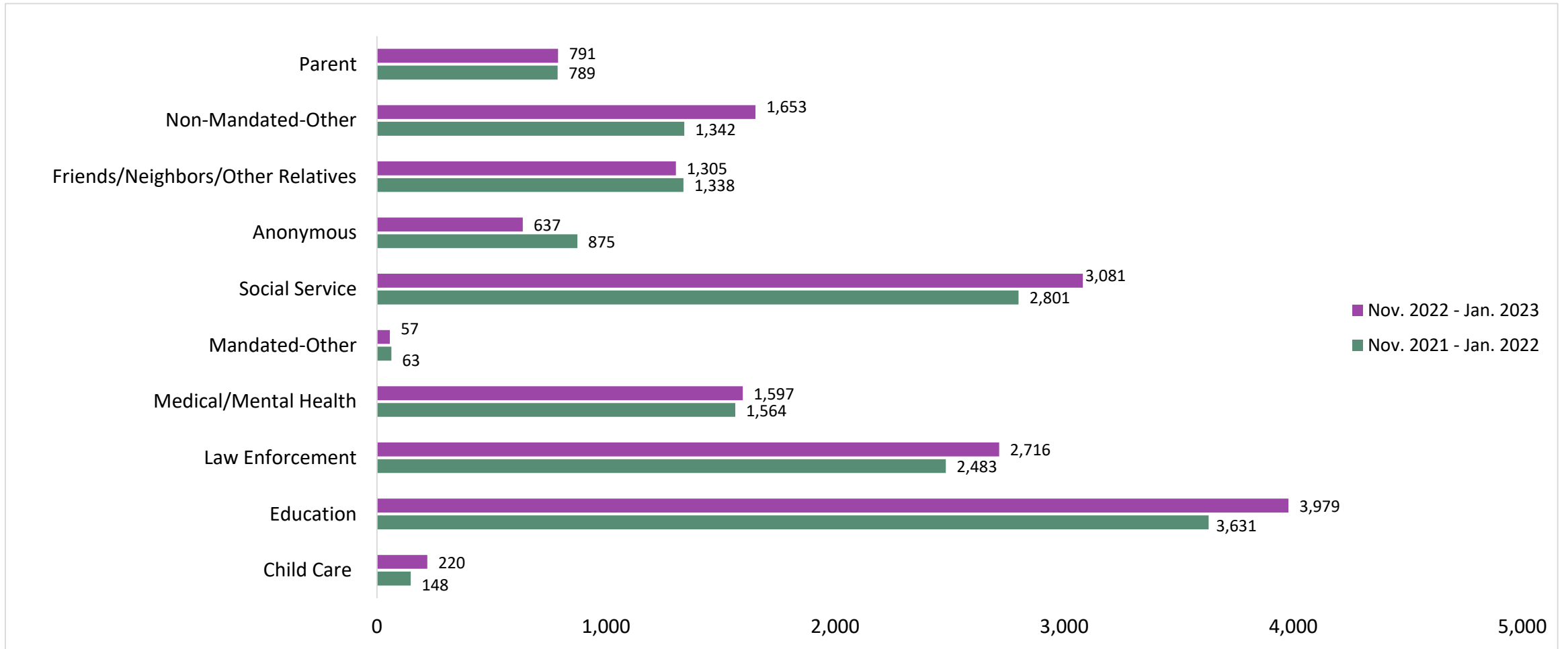


CTH Aftercare Census December 2021 – December 2022

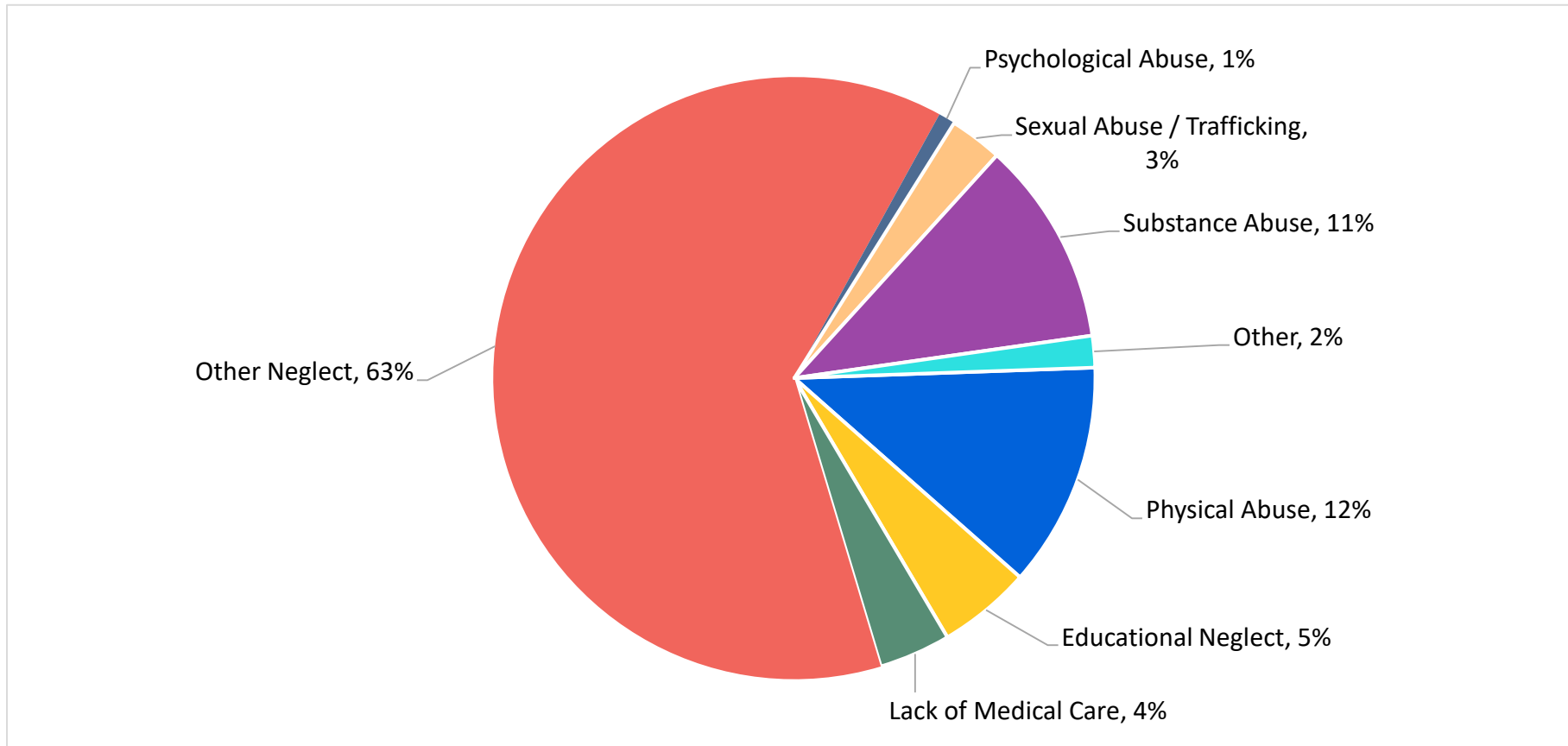


Appendix

Figure 1: SCR Intakes by Reporter Group November 21 – January 22 and November 22 – January 23



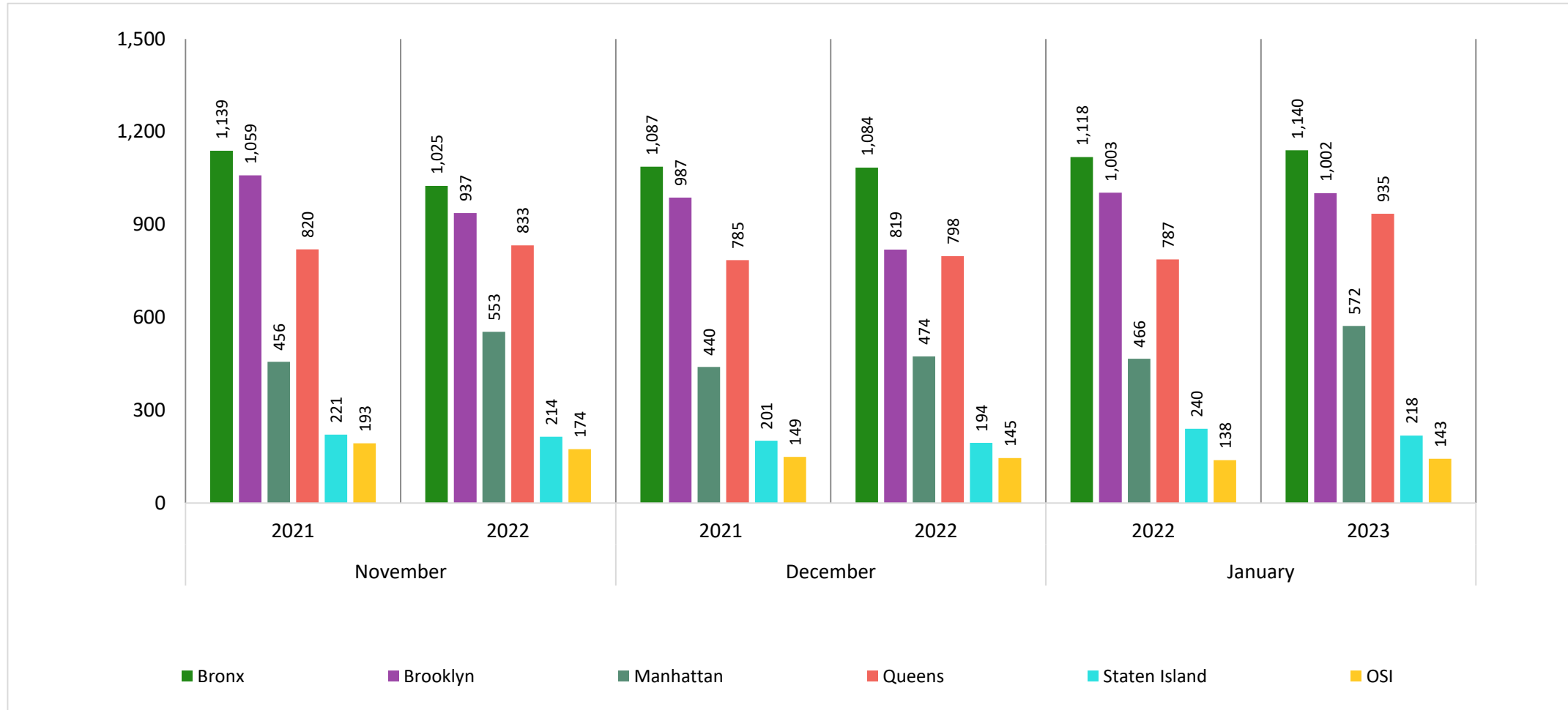
**Figure 2: SCR Allegations
November 22 – January 23**



Total Allegations = 31,824

Note: Individual investigations often include multiple allegations. Allegations are grouped as follows: Physical Abuse - burn, fatality, fracture, choking, twisting, shaking, excessive corporal punishment, internal injuries, lacerations, bruises, welts, poisoning, noxious substances; Educational Neglect – educational neglect; Lack of Medical Care – lack of medical care; Other Neglect - inadequate guardianship, inadequate food, clothing, shelter, lack of supervision, malnutrition, failure to thrive, swelling, dislocations, sprains; Psychological Abuse - isolation, emotional neglect; Sexual Abuse/Trafficking – sexual abuse, sex trafficking; Substance Abuse - parental drug use, child drug use; and Other -abandonment, inappropriate custodial conduct, labor trafficking.

**Figure 3: SCR Investigations by Borough
November 21 – January 22 and November 22 – January 23**



**Table 1: SCR Investigations Changes by Borough
November 21 – January 22 and November 22 – January 23**

Month	Year	Bronx	Brooklyn	Manhattan	Queens	Staten Island	OSI	Other	Total
November	2021	1,139	1,059	456	820	221	193	121	4,009
	2022	1,025	937	553	833	214	174	121	3,857
	% Change	-10.0%	-11.5%	21.3%	1.6%	-3.2%	-9.8%	0.0%	-3.8%
December	2021	1,087	987	440	785	201	149	132	3,781
	2022	1,084	819	474	798	194	145	129	3,643
	% Change	-0.3%	-17.0%	7.7%	1.7%	-3.5%	-2.7%	-2.3%	-3.6%
January	2022	1,118	1,003	466	787	240	138	138	3,890
	2023	1,140	1,002	572	935	218	143	119	4,129
	% Change	2.0%	-0.1%	22.7%	18.8%	-9.2%	3.6%	-13.8%	6.1%
Total	2021	3,344	3,049	1,362	2,392	662	480	391	11,680
	2022	3,249	2,758	1,599	2,566	626	462	369	11,629
	% Change	-2.8%	-9.5%	17.4%	7.3%	-5.4%	-3.8%	-5.6%	-0.4%

**Table 2: Child Welfare Prevention Cases: New and Closed
January 2021 - January 2023**

Year	Month	New Cases	Closed Cases
2021	Jan-21	714	357
	Feb-21	763	397
	Mar-21	809	556
	Apr-21	691	605
	May-21	667	645
	Jun-21	710	711
	Jul-21	631	783
	Aug-21	633	762
	Sep-21	557	738
	Oct-21	585	687
	Nov-21	500	676
	Dec-21	557	690
2022	Jan-22	490	522
	Feb-22	486	556
	Mar-22	618	766
	Apr-22	618	725
	May-22	599	613
	Jun-22	544	623
	Jul-22	464	707
	Aug-22	578	700
	Sep-22	528	596
	Oct-22	547	592
	Nov-22	470	544
	Dec-22	547	527
2023	Jan-23	527	404

Note: Data excludes transfers.

**Table 3: Referrals to Child Welfare Prevention Services by Source
January 2021 – January 2023**

Year	Month	Total Referrals	DCP	FC Agencies	PPRS Transfer	School	Self	Other Sources*
2021	Jan-21	1,002	84.9%	1.4%	5.8%	1.9%	2.6%	3.4%
	Feb-21	1,083	85.4%	1.8%	6.6%	1.4%	1.9%	2.9%
	Mar-21	1,121	83.9%	0.6%	8.0%	2.1%	3.1%	2.3%
	Apr-21	969	83.1%	0.9%	10.2%	1.0%	1.7%	3.1%
	May-21	1,105	71.1%	1.3%	20.8%	1.5%	1.3%	4.0%
	Jun-21	1,028	83.9%	1.6%	6.2%	2.3%	2.7%	3.3%
	Jul-21	907	82.5%	2.5%	10.4%	0.8%	1.8%	2.1%
	Aug-21	988	79.4%	2.7%	12.6%	0.5%	2.4%	2.4%
	Sep-21	837	83.0%	1.7%	10.3%	0.0%	2.6%	2.4%
	Oct-21	842	82.4%	1.7%	9.6%	1.8%	3.0%	1.5%
	Nov-21	831	79.9%	1.7%	11.9%	1.6%	2.2%	2.8%
	Dec-21	810	85.4%	0.9%	8.4%	1.2%	1.6%	2.5%
2022	Jan-22	753	83.5%	1.3%	9.3%	1.5%	2.5%	1.9%
	Feb-22	818	82.8%	1.8%	10.0%	0.9%	2.3%	2.2%
	Mar-22	934	87.8%	1.2%	6.7%	1.4%	1.4%	1.5%
	Apr-22	979	85.9%	1.6%	8.0%	0.8%	2.0%	1.6%
	May-22	859	85.4%	1.2%	7.6%	1.4%	2.2%	2.2%
	Jun-22	743	87.2%	1.2%	6.9%	1.2%	1.5%	2.0%
	Jul-22	797	82.9%	2.0%	9.5%	1.9%	1.6%	2.0%
	Aug-22	861	85.9%	1.0%	7.1%	0.9%	3.1%	1.9%
	Sep-22	795	83.0%	1.6%	8.9%	0.9%	3.0%	2.5%
	Oct-22	853	80.9%	1.1%	9.8%	1.3%	3.6%	3.3%
	Nov-22	731	74.3%	2.1%	11.6%	3.1%	3.8%	5.1%
	Dec-22	733	77.6%	1.6%	10.5%	2.2%	5.7%	2.3%
2023	Jan-23	818	79.0%	1.5%	9.5%	2.8%	4.4%	2.8%

Note: Data includes all referrals – accepted and rejected

*Other Community Sources includes the Department of Homeless Services, Family Court, FAP, Hospitals and Medical facilities, the NYC Housing Authority, Probation, and Sponsor Agencies.