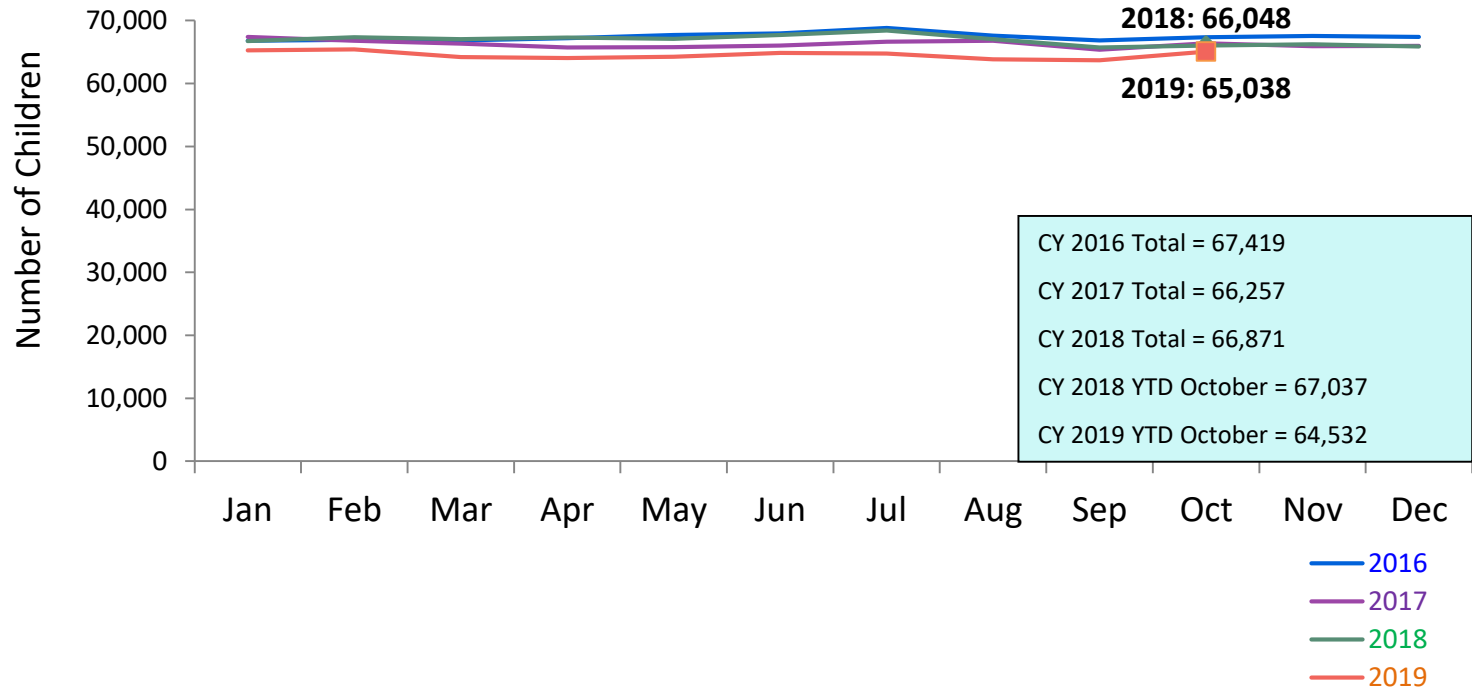


FLASH
monthly indicator
REPORT

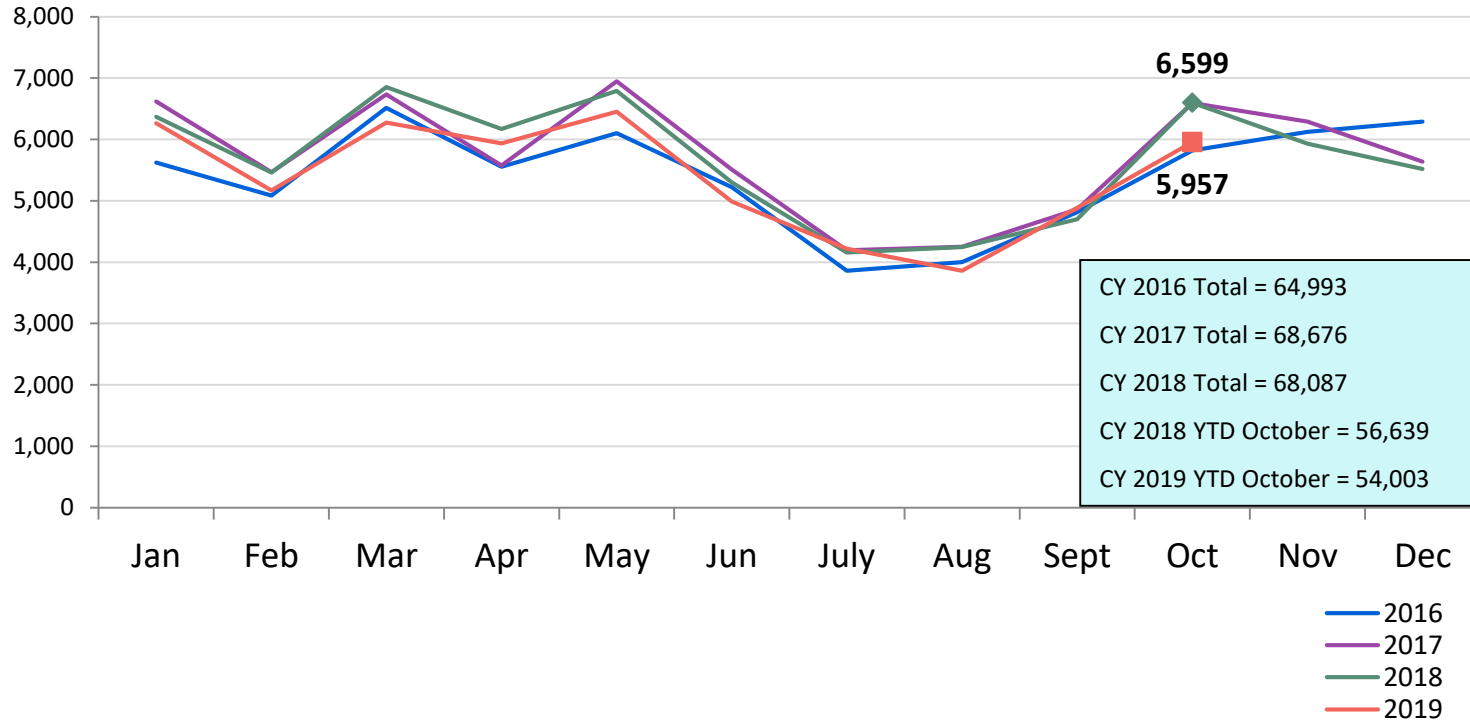
The background of the title is a photograph of children sitting on asphalt, drawing colorful patterns with chalk. The word 'FLASH' is in large white letters, 'monthly indicator' is in smaller white letters, and 'REPORT' is in the largest white letters.

November 2019

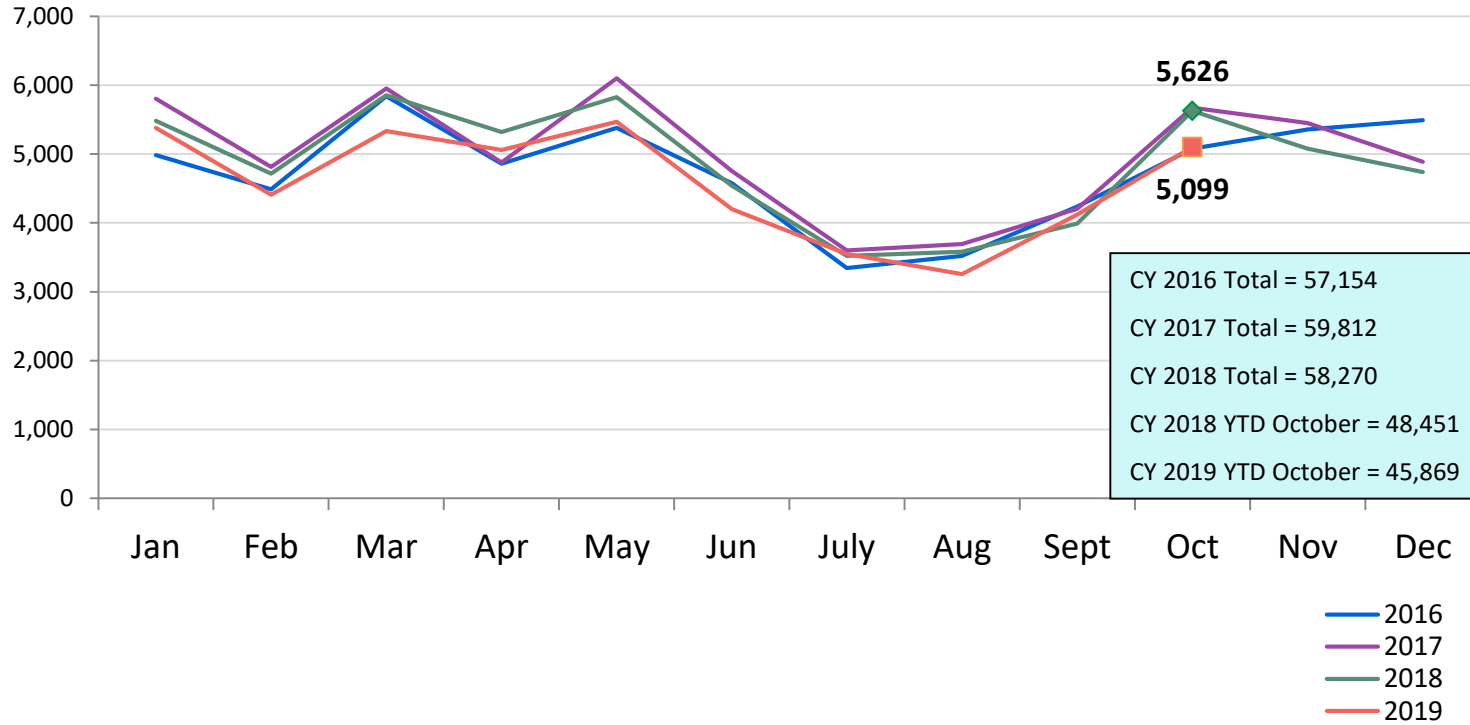
Children Using Vouchers for Child Care
January 2016 – October 2019 (End of Month)



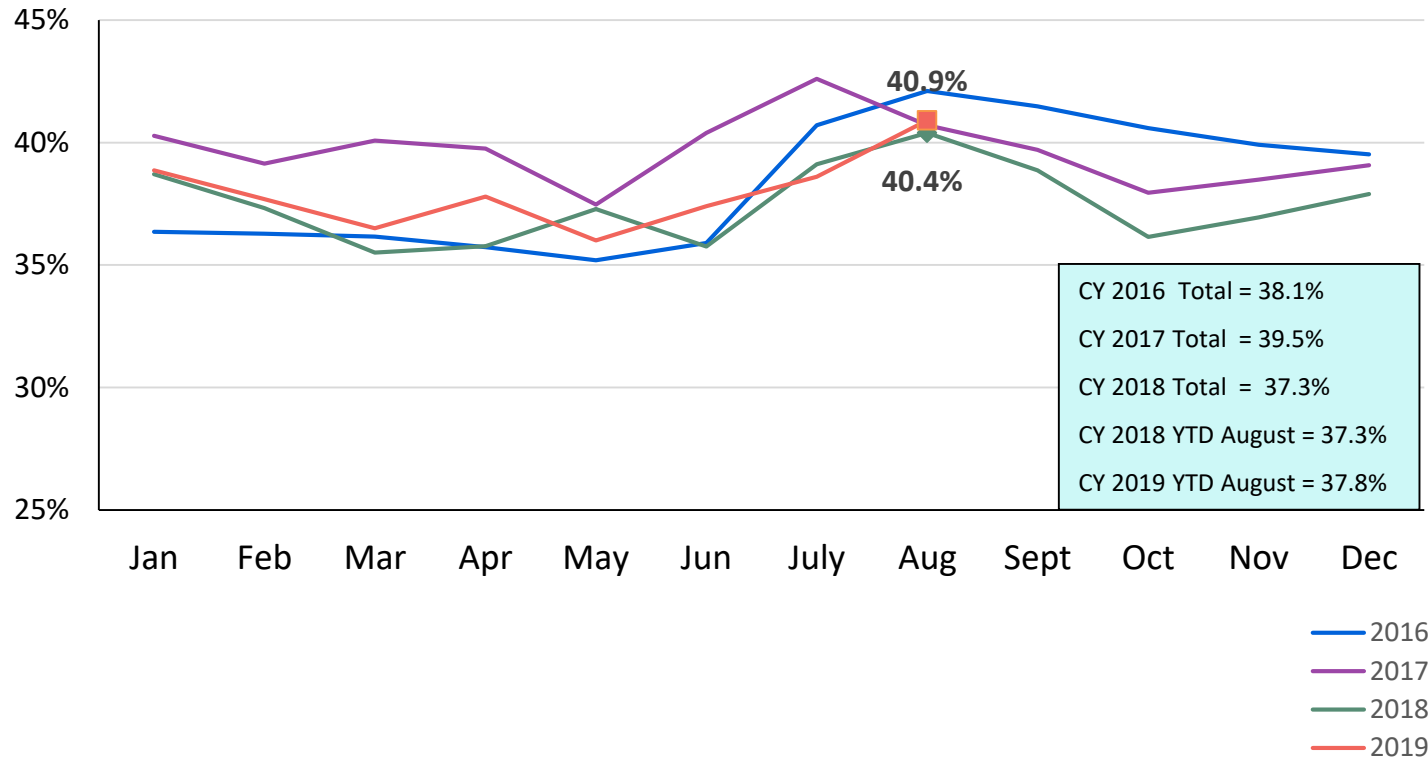
SCR Intakes January 2016 – October 2019



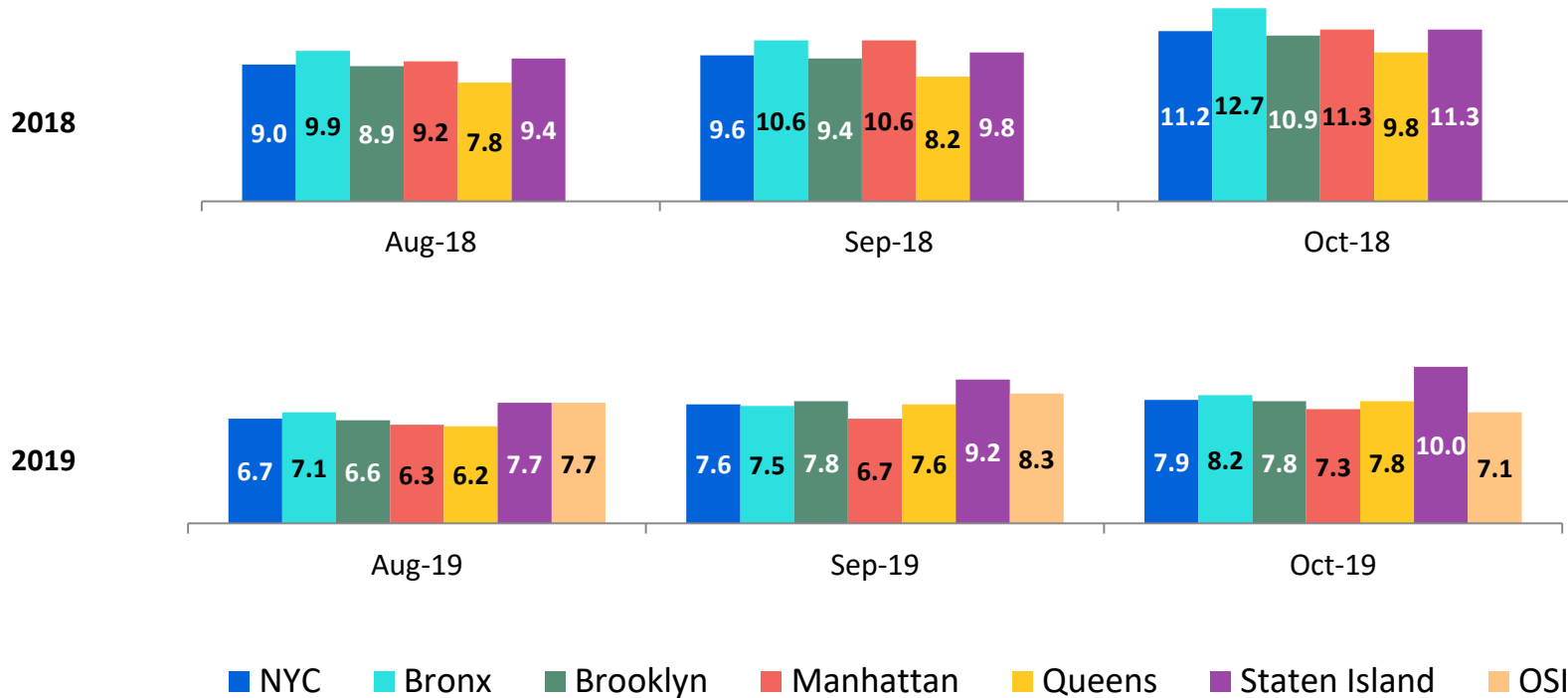
SCR Consolidated Investigations
January 2016 – October 2019



Percent of Investigations that Found Some Credible Evidence of Abuse or Neglect
January 2016 – August 2019

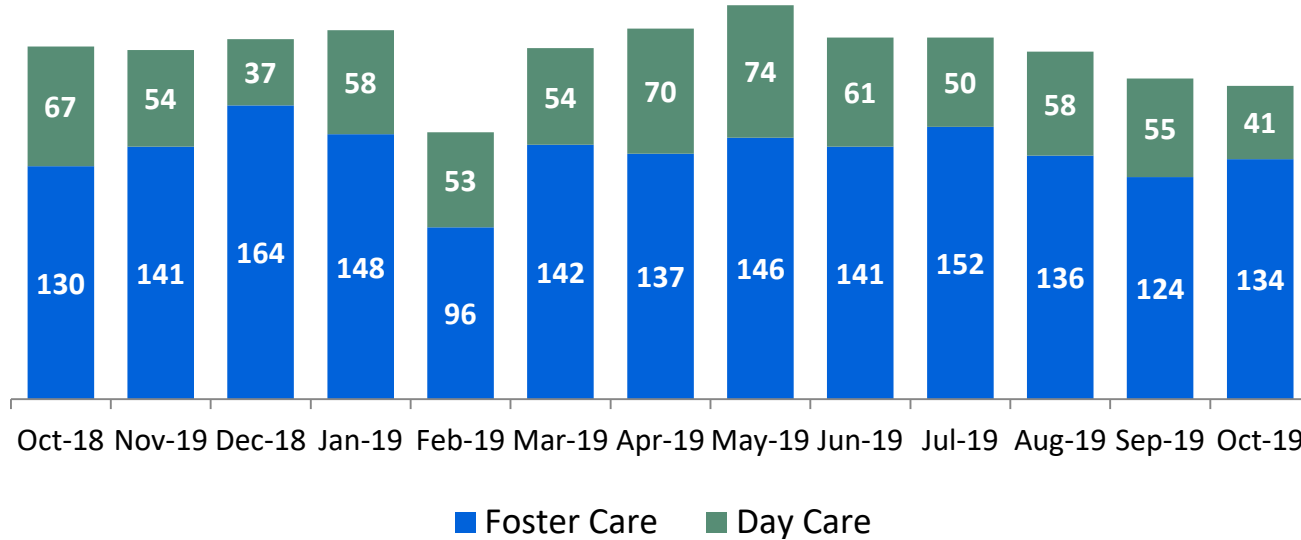


Average Child Protection Caseload*
August 2018 – October 2018 and August 2019 – October 2019



*Prior to December 2018 caseloads are of Protective/Diagnostic Unit (Child Protection, School Based, Sex Abuse and Hospital Units) caseworkers only. Beginning December 2018, all caseload carrying Child Protection Specialists (CPS) in investigative and Family Assessment Response Units are included. Includes CPS in Primary and Case Manager roles only.

OSI Foster Care and Day Care* Investigations October 2018 – October 2019



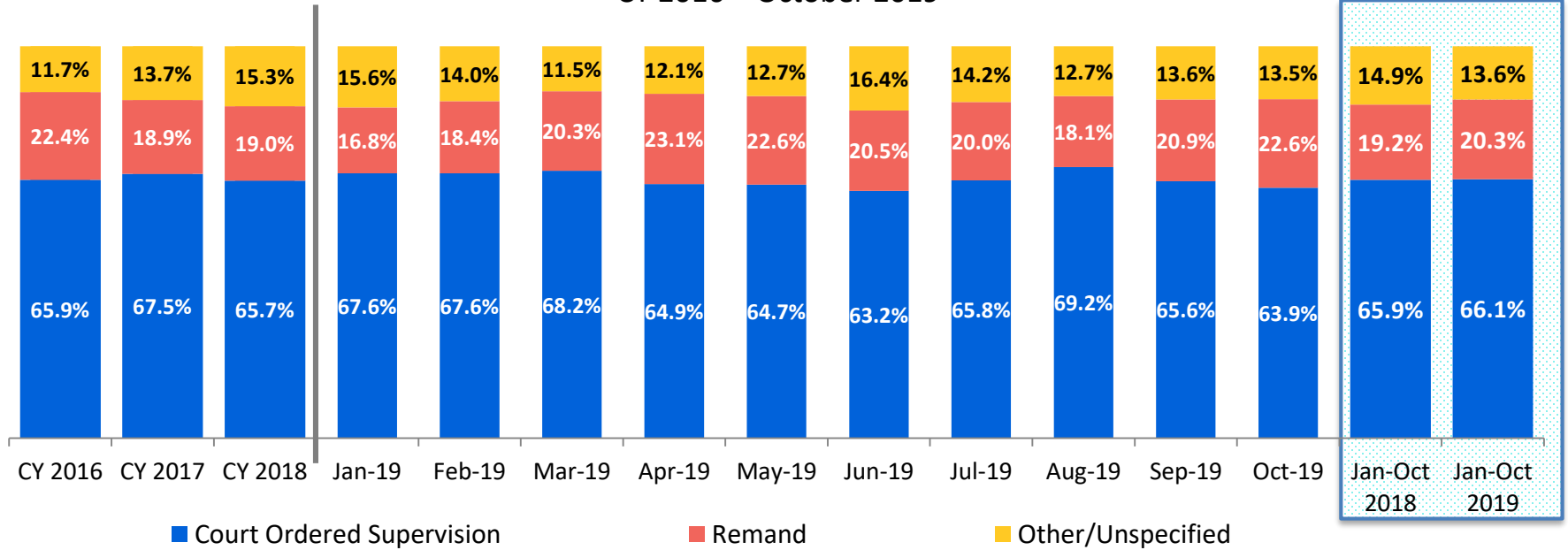
Calendar-Year-to-Date

Jan-Oct 2018	Jan-Oct 2019
619	574
1,394	1,356

	Oct 2018	Nov 2018	Dec 2018	Jan 2019	Feb 2019	Mar 2019	Apr 2019	May 2019	Jun 2019	Jul 2019	Aug 2019	Sep 2019	Oct 2019	CYTD Jan-Oct 2018	CYTD Jan-Oct 2019
Number of Investigations	197	195	201	206	149	196	207	220	202	202	194	179	175	2,013	1,930

*Day Care investigations include alleged abuse or maltreatment of children perpetrated by someone who cares for children in a setting that is not the child's familial home and that requires state or local government approval and is subject to state laws, regulations, and oversight. This includes, but is not limited to, ACS Early Care and Education programs.

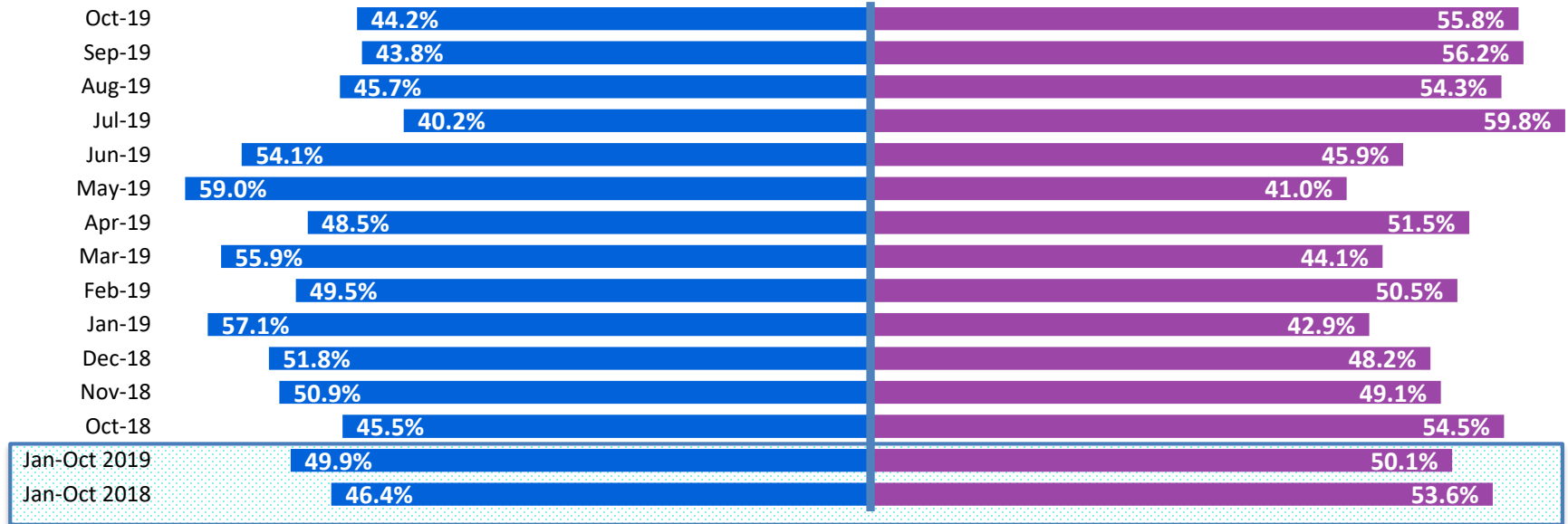
Article 10 Filings and Initial Hearing Outcomes, Children CY 2016 – October 2019



	CY 2016	CY 2017	CY 2018	Jan 2019	Feb 2019	Mar 2019	Apr 2019	May 2019	Jun 2019	Jul 2019	Aug 2019	Sep 2019	Oct 2019	CYTD Jan-Oct 2018	CYTD Jan-Oct 2019
Children with Article 10 Filings	10,973	15,975	13,319	1,092	1,056	1,040	1,127	1,080	1,002	1,021	1,025	810	1,070	11,294	10,323

Note: The category "Other/Unspecified" includes released with no supervision, no order issued and no outcome specified.

Remands Approved at Initial Article 10 Hearing by Removal Status October 2018 – October 2019

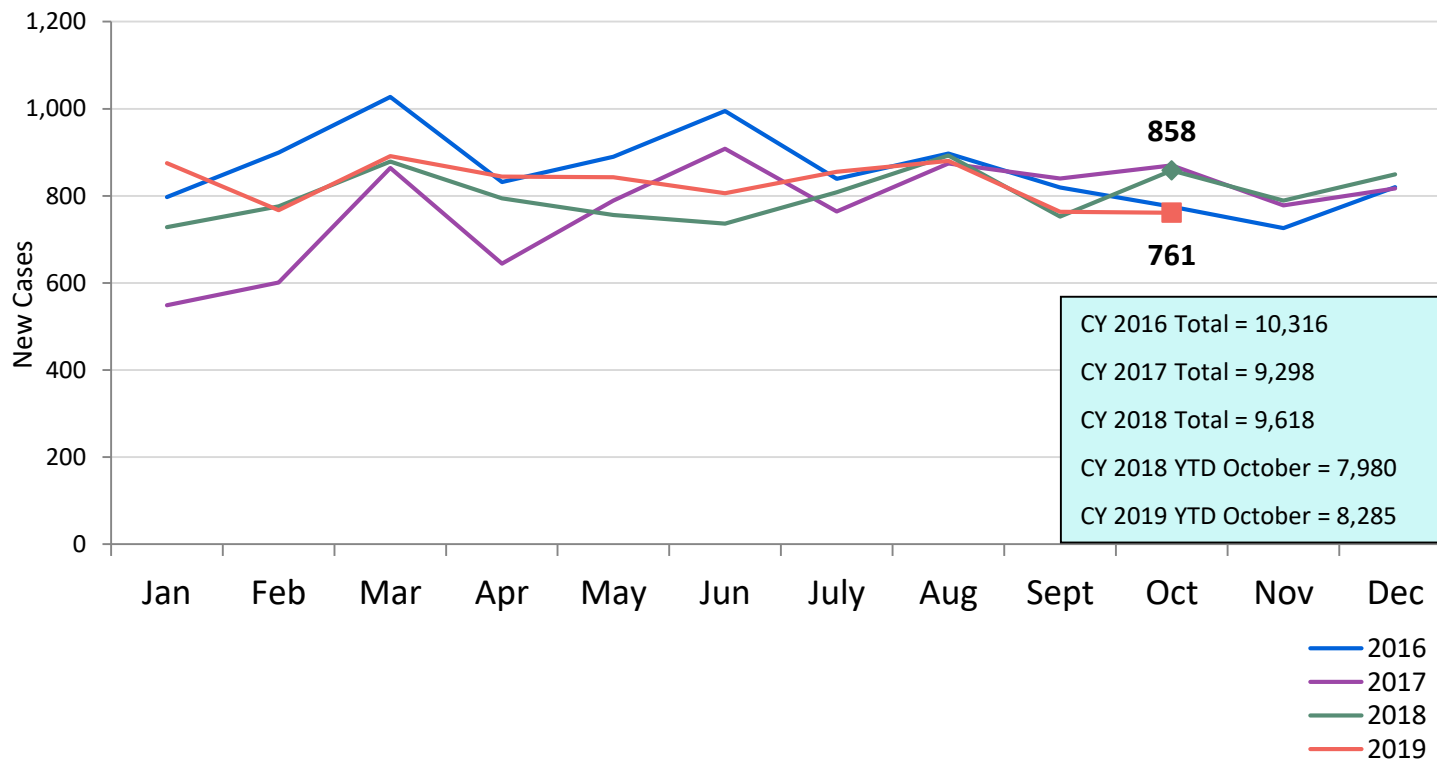


■ Pre-Filing Emergency Removals (court approved at initial hearing)

■ Post-Filing Removals (court ordered at initial hearing)

	Oct 2018	Nov 2018	Dec 2018	Jan 2019	Feb 2019	Mar 2019	Apr 2019	May 2019	Jun 2019	Jul 2019	Aug 2019	Sep 2019	Oct 2019	CYTD Jan-Oct 2018	CYTD Jan-Oct 2019
Children Remanded	297	167	193	184	194	211	260	244	205	204	186	169	242	2,173	2,099

New Child Welfare Prevention Cases January 2016 – October 2019

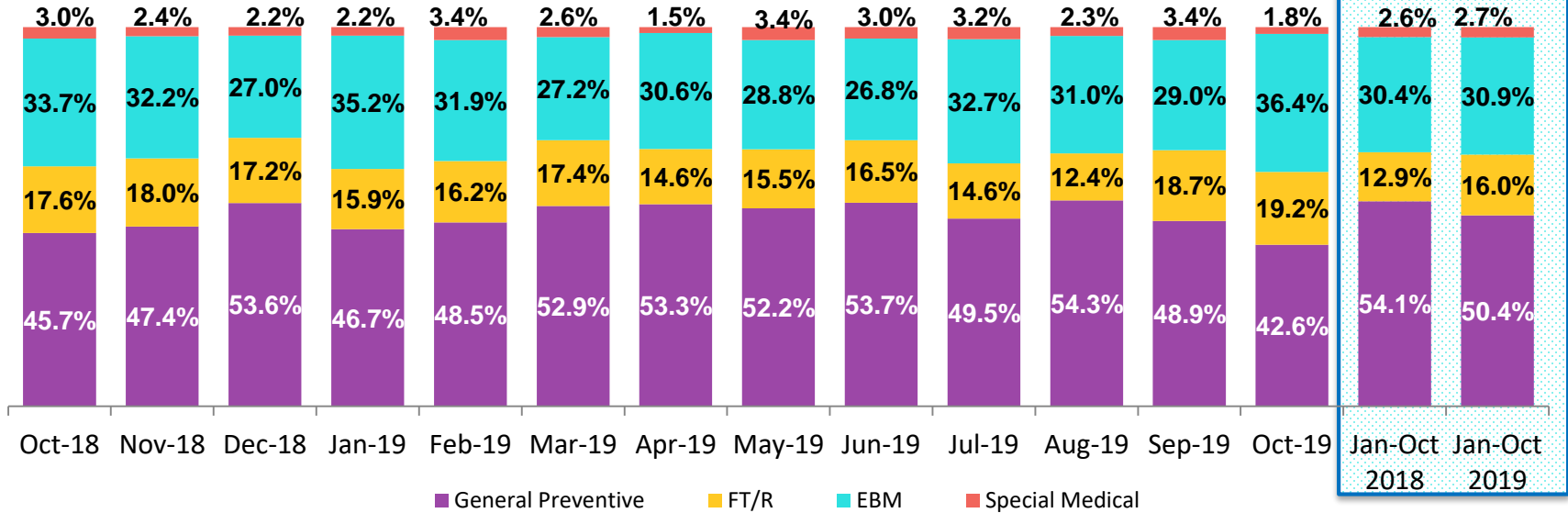


*New prevention cases do not include cases transferred from one preventive program to another.

See Pages 30 and 31 of the Appendix for supporting data.

New Child Welfare Prevention Cases by Program Type *

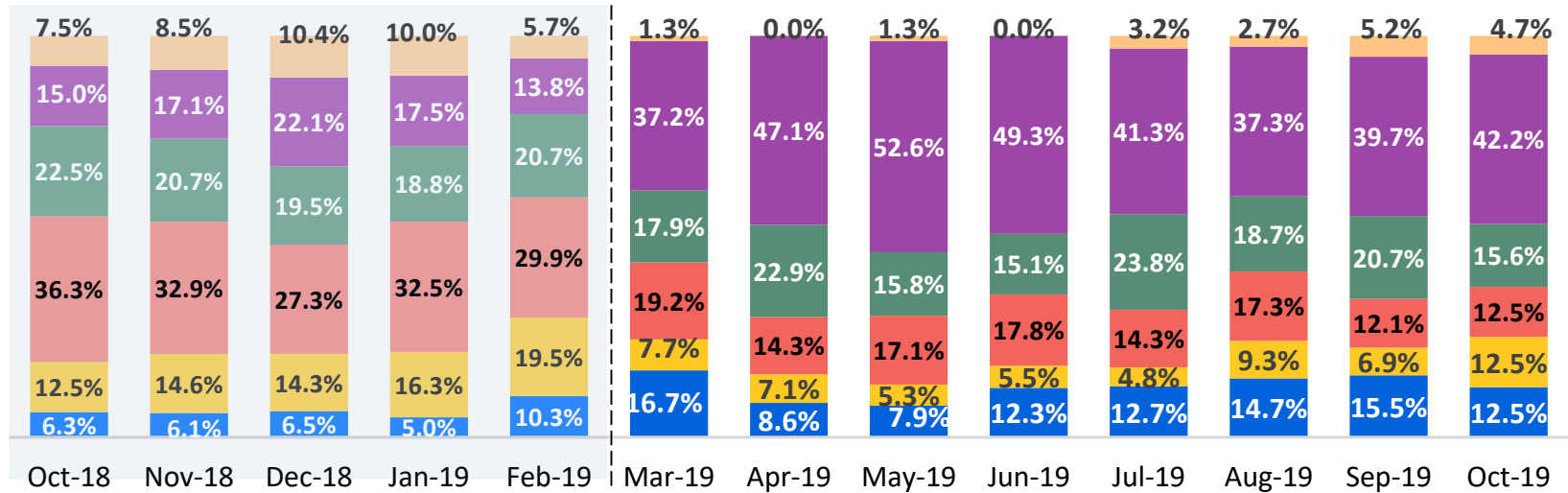
October 2018 – October 2019



	Oct 2018	Nov 2018	Dec 2018	Jan 2019	Feb 2019	Mar 2019	Apr 2019	May 2019	Jun 2019	Jul 2019	Aug 2019	Sep 2019	Oct 2019	CYTD Jan-Oct 2018	CYTD Jan-Oct 2019
Number of New Preventive Cases	858	789	849	875	767	891	844	843	806	855	880	763	761	7,980	8,285

* New prevention cases do not include cases transferred from one prevention program to another.

Average Daily Children's Center Population October 2018 – October 2019

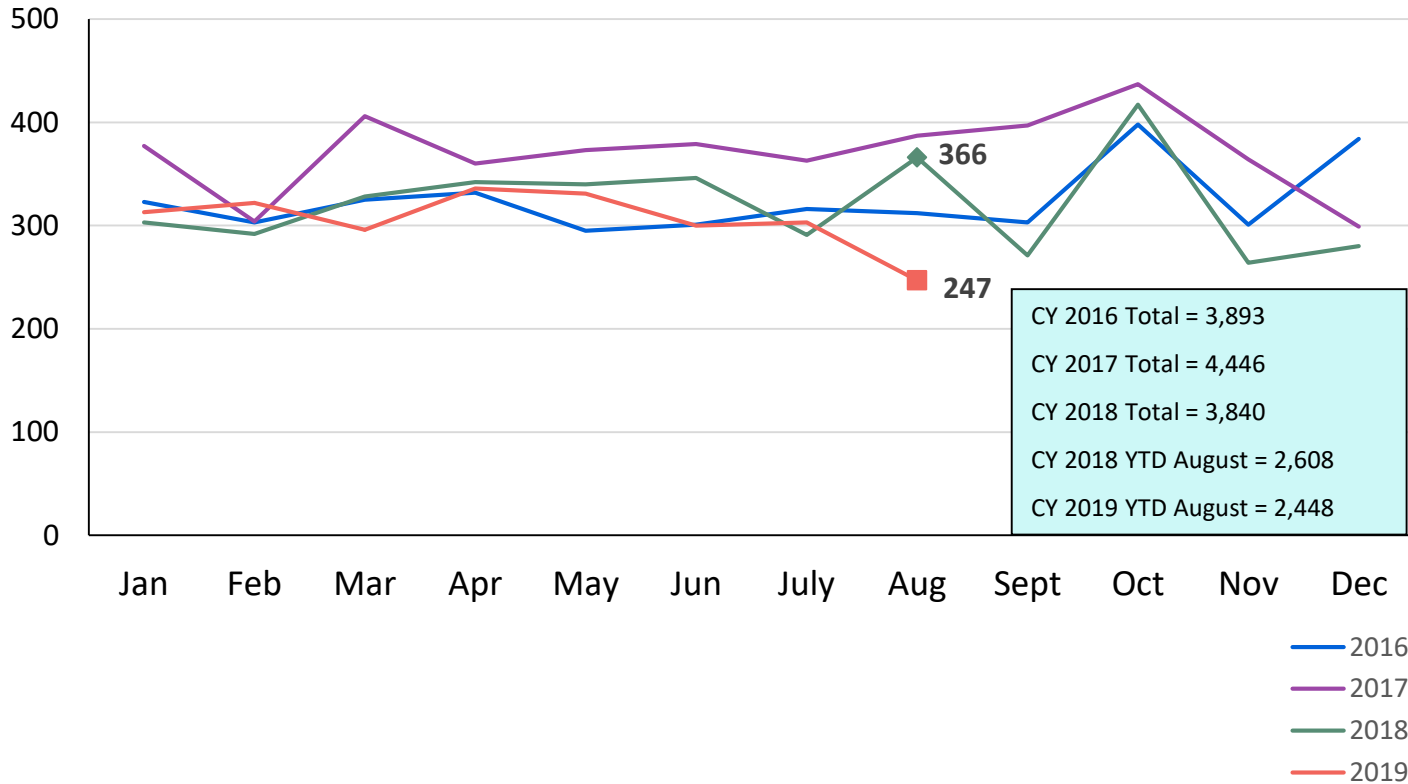


Through Feb-19: ■ Newborn - 1 year old ■ 2-6 years old ■ 7-12 years old ■ 13-15 years old ■ 16-17 years old ■ 18+ years old
Mar-19 - present: ■ Newborn - 3 years old ■ 4-6 years old ■ 7-10 years old ■ 11-13 years old ■ 14-18 years old ■ 19+ years old

	Oct 2018*	Nov 2018*	Dec 2018*	Jan 2019*	Feb 2019*	Mar 2019	Apr 2019	May 2019	Jun 2019	Jul 2019	Aug 2019	Sep 2019	Oct 2019	CYTD Jan-Oct 2018	CYTD Jan-Oct 2019
Average Number of Children	80	82	77	80	87	78	70	76	73	63	75	58	64	77	73

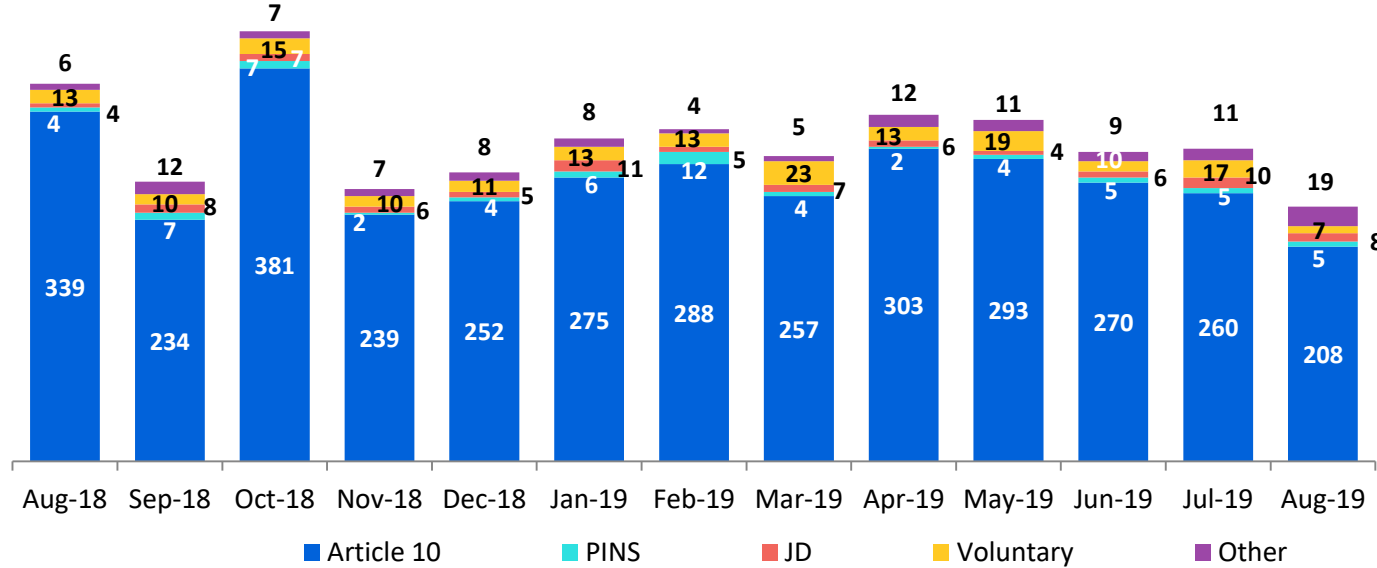
* Different age groups were used from September 2018 to February 2019.

New Placements of Children into Foster Care January 2016 – August 2019



Reason for New Placements of Children into Foster Care

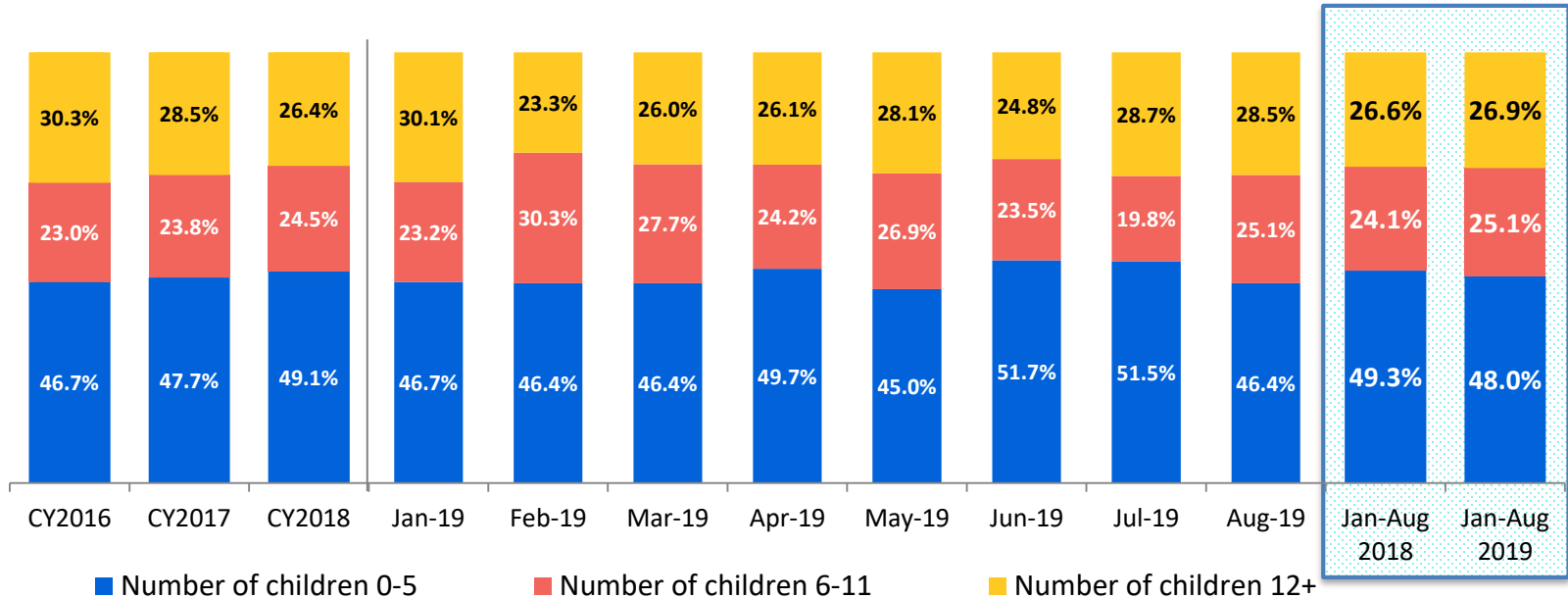
August 2018 – August 2019



Jan-Aug 2018	Jan-Aug 2019
64	79
105	115
68	57
54	43
2,316	2,154

	Aug 2018	Sep 2018	Oct 2018	Nov 2018	Dec 2018	Jan 2019	Feb 2019	Mar 2019	Apr 2019	May 2019	Jun 2019	Jul 2019	Aug 2019	CYTD Jan-Aug 2018	CYTD Jan-Aug 2019
Number of Placements	366	271	417	264	280	313	322	296	336	331	300	303	247	2,608	2,448

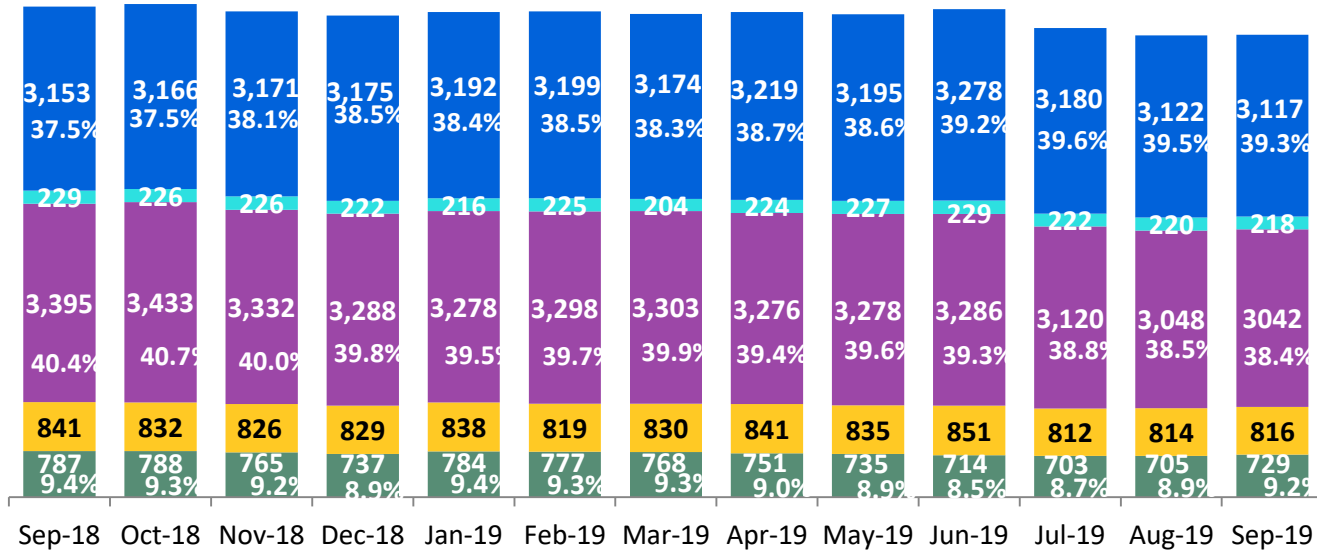
New Placements of Children into Foster Care* by Age CY 2016 – August 2019



	CY 2016	CY 2017	CY 2018	Jan 2019	Feb 2019	Mar 2019	Apr 2019	May 2019	Jun 2019	Jul 2019	Aug 2019	CYTD Jan-Aug 2018	CYTD Jan-Aug 2019
Number of Placements	3,680	4,285	3,746	302	317	289	330	327	294	293	239	2,540	2,391

*Excludes CTH placements.

Children in Foster Care *
September 2018 – September 2019 (end of month)



Calendar-Year-to-Date

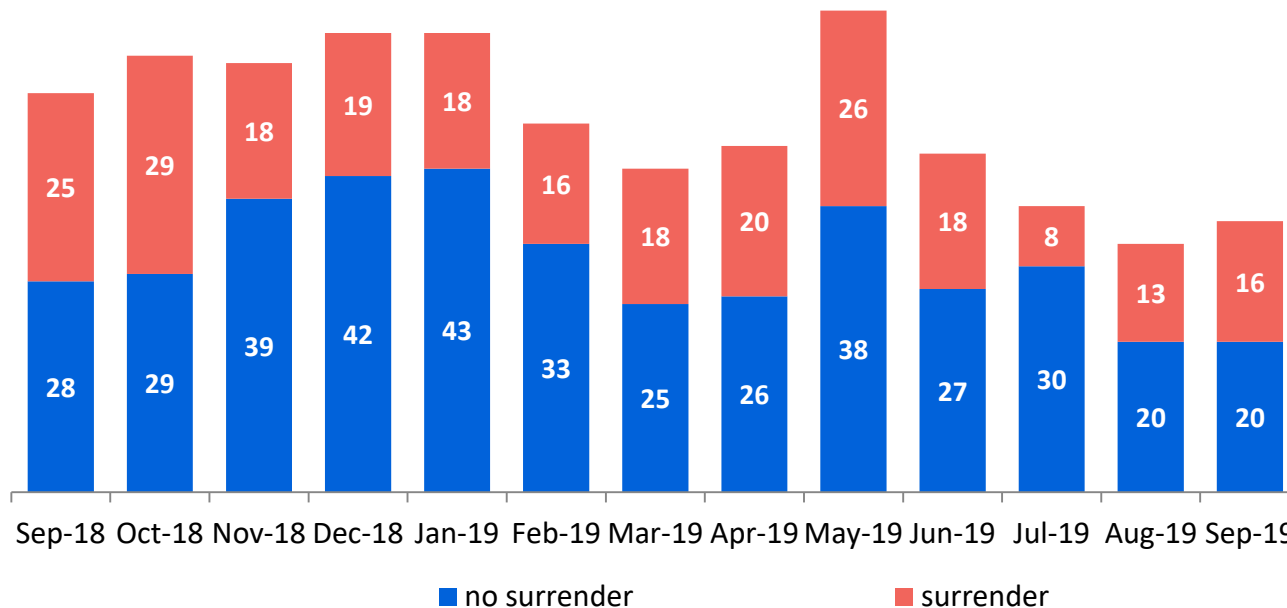
Jan-Sep 2018	Jan-Sep 2019
3,006 (35.1%)	3,186 (38.9%)
240 (2.8%)	220 (2.7%)
3,659 (42.8%)	3,214 (39.2%)
848 (9.9%)	828 (10.1%)
806 (9.4%)	741 (9.0%)

■ Residential ■ Treatment FFC ■ Regular FBH ■ Special Medical ■ Kinship

	Sep 2018	Oct 2018	Nov 2018	Dec 2018	Jan 2019	Feb 2019	Mar 2019	Apr 2019	May 2019	Jun 2019	Jul 2019	Aug 2019	Sep 2019	CYTD Jan-Sep 2018	CYTD Jan-Sep 2019
Number in Foster Care	8,406	8,444	8,320	8,251	8,308	8,317	8,279	8,310	8,270	8,358	8,037	7,909	7,922	8,558	8,190

*Excludes CTH placements and includes children in 24 hour care and approximately 200 young children who are living in foster homes or residential care facilities with their mothers who are in foster care (8D children).

Children Freed for Adoption, Surrender by at Least One Parent September 2018 – September 2019

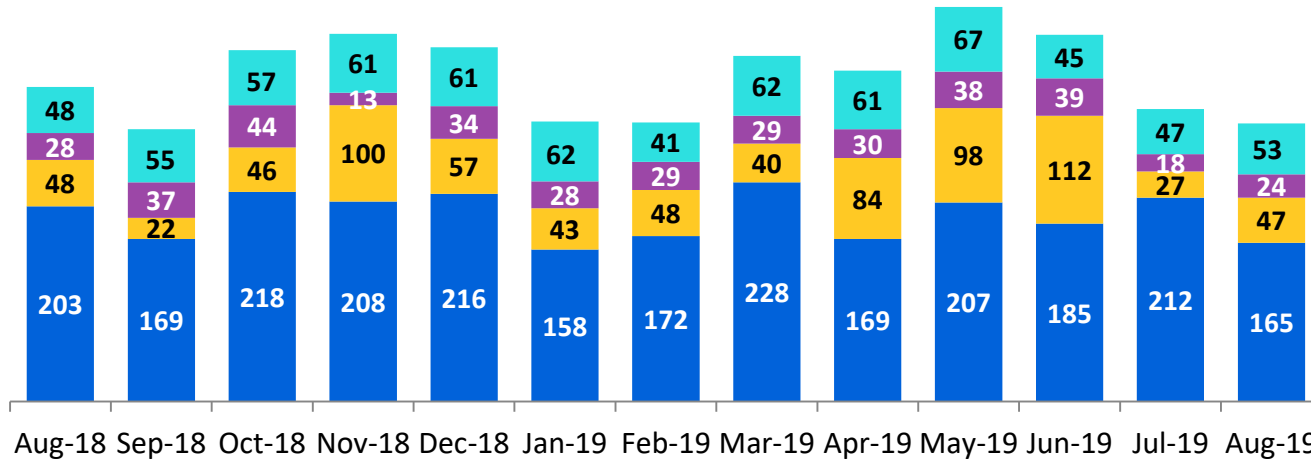


Calendar-Year-to-Date

Jan-Sep 2018	Jan-Sep 2019
225	153
351	262

	Sep 2018	Oct 2018	Nov 2018	Dec 2018	Jan 2019	Feb 2019	Mar 2019	Apr 2019	May 2019	Jun 2019	Jul 2019	Aug 2019	Sep 2019	CYTD Jan-Sep 2018	CYTD Jan-Sep 2019
Number Freed for Adoption	53	58	57	61	61	49	43	46	64	45	38	33	36	576	415

Permanency and Non-Permanency* Discharges from Foster Care** August 2018 – August 2019



Calendar-Year-to-Date

Jan-Aug 2018	Jan-Aug 2019
455	438
184	235
585	499
1,698	1,496

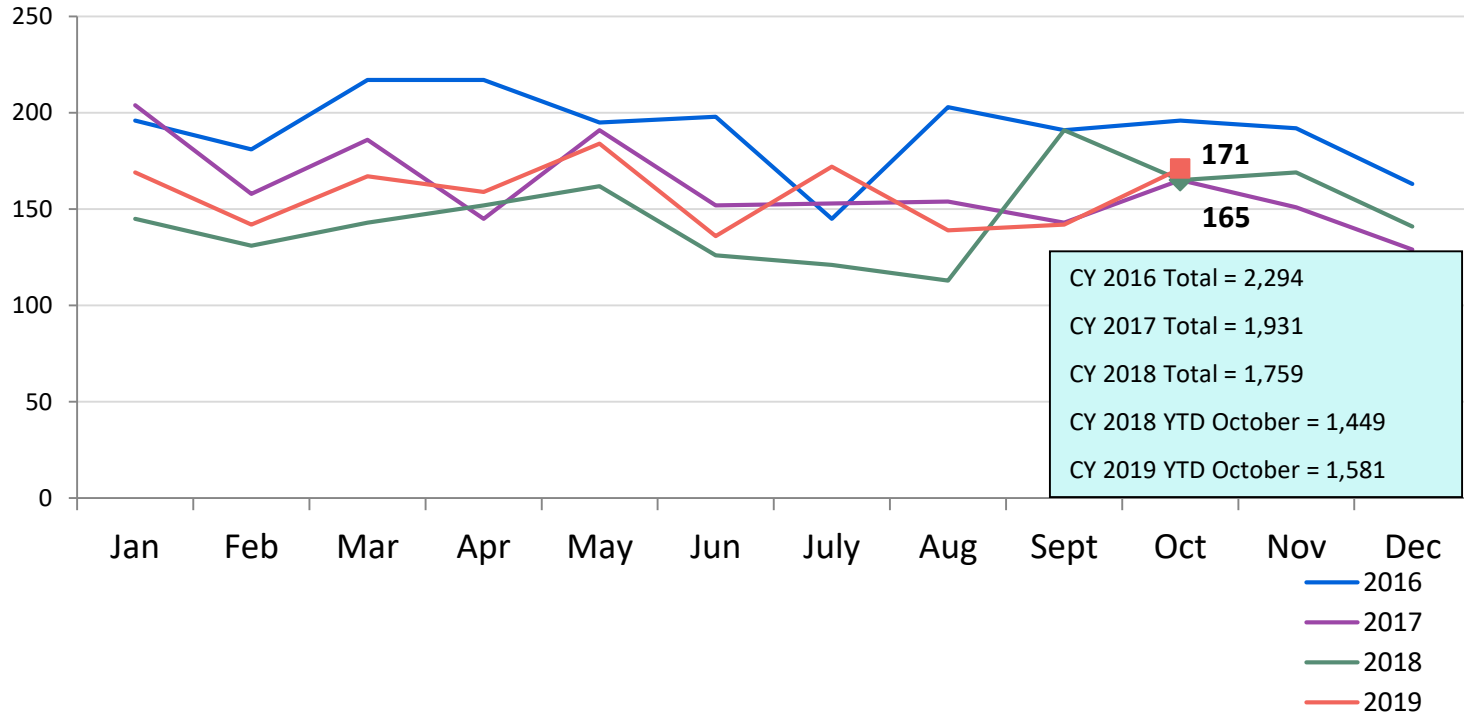
■ Reunifications ■ Adoptions ■ KinGAP ■ Non-Permanency Discharges

	Aug 2018	Sep 2018	Oct 2018	Nov 2018	Dec 2018	Jan 2019	Feb 2019	Mar 2019	Apr 2019	May 2019	Jun 2019	Jul 2019	Aug 2019	CYTD Jan-Aug 2018	CYTD Jan-Aug 2019
Number of Discharges	327	283	365	382	368	291	290	359	344	410	381	304	289	2,922	2,668

*Non-permanency discharges include AWOL, APPLA (youth 18-20 years old discharged to self and youth who reached 21 while in care), and other discharge destinations such as psychiatric institutions and correctional facilities and discharges with unspecified destinations.

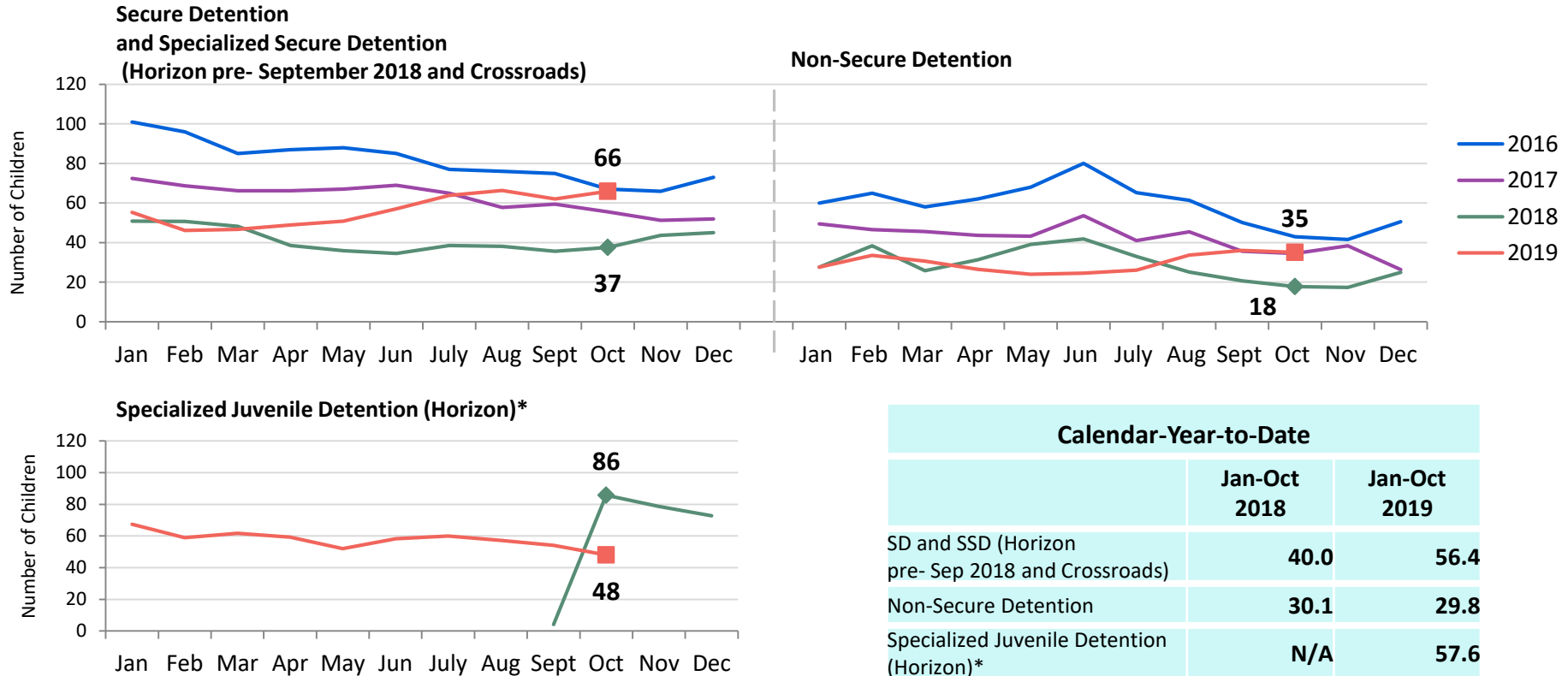
**Excludes discharges of youth from CTH placements.

Total Monthly Admissions to Detention January 2016 – October 2019*



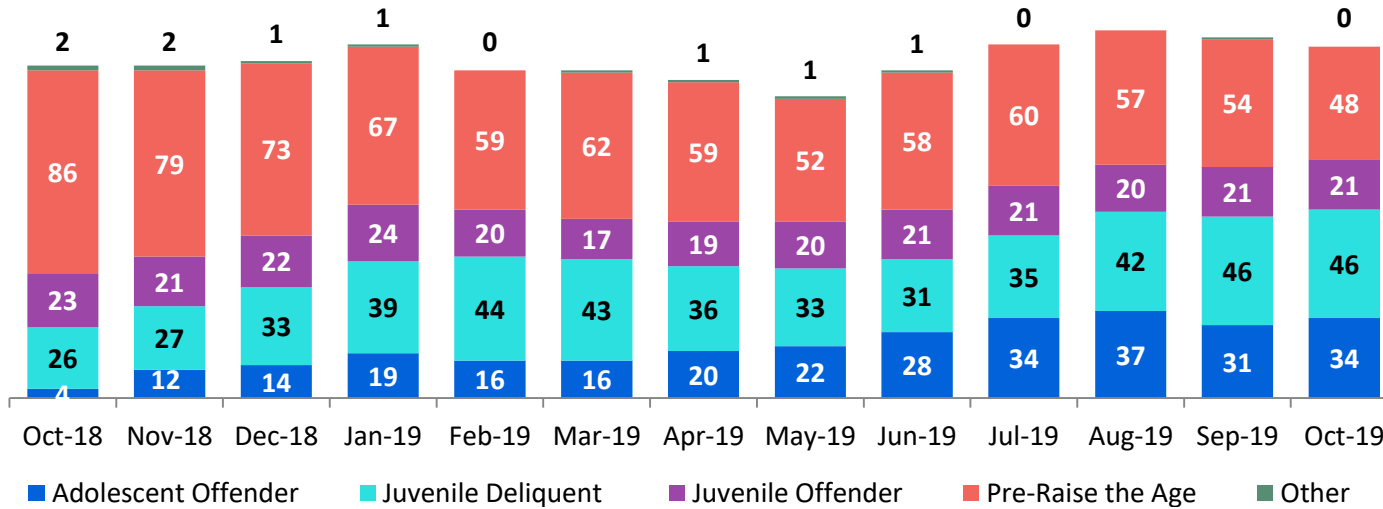
*Beginning in September 2018 detention admissions include admissions to the Horizon Juvenile Facility of 16 and 17 year olds moved off Rikers Island and pre-Raise the Age 17 year olds.

Detention Monthly Average Daily Population January 2016 – October 2019*



*Beginning in September 2018 the Horizon Juvenile Facility is housing 16 and 17 year olds moved off Rikers Island and pre-Raise the Age 17 year olds.

Detention Total Monthly Average Daily Population by Case Type* October 2018 – October 2019



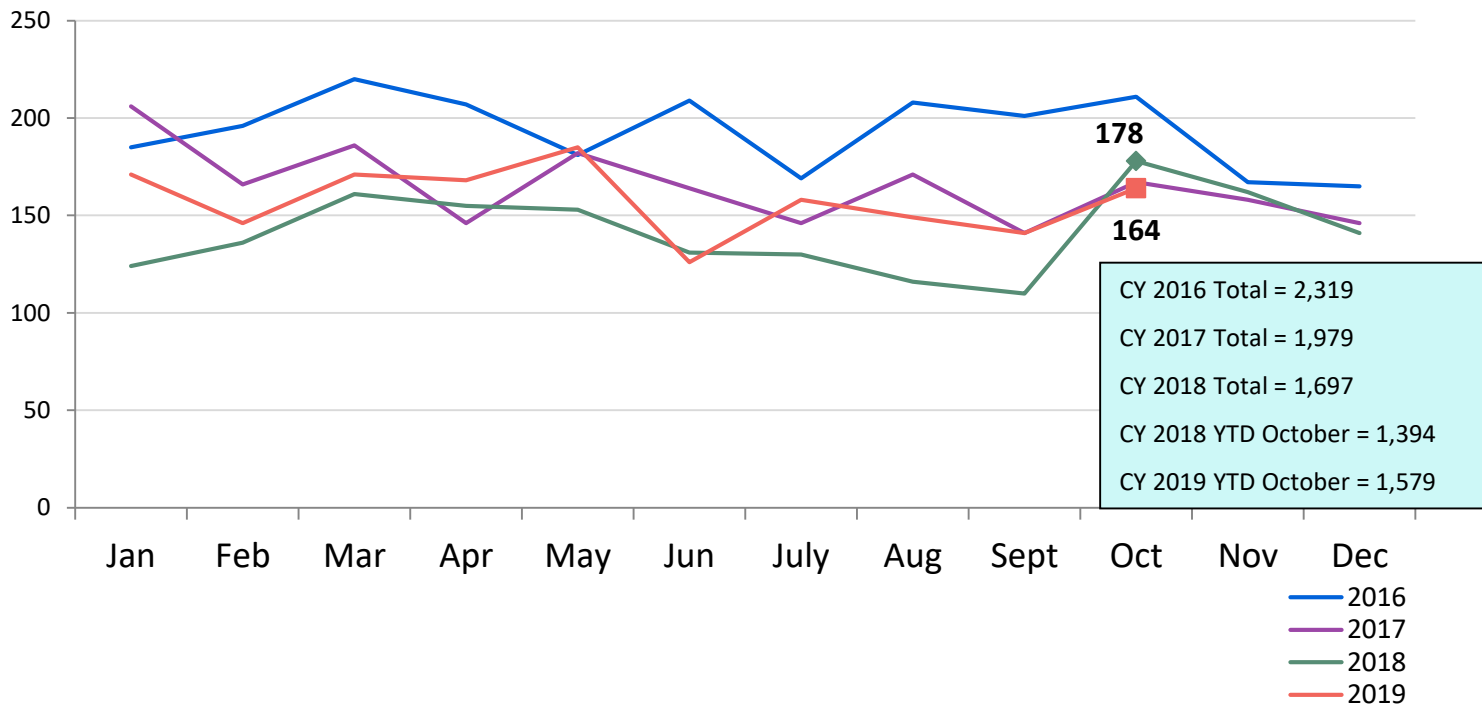
Jan-Oct 2018	Jan-Oct 2019
1.9	0.8
N/A	57.6
24.3	20.3
44.2	39.4
N/A	25.6

Total Average Daily Population

Oct 2018	Nov 2018	Dec 2018	Jan 2019	Feb 2019	Mar 2019	Apr 2019	May 2019	Jun 2019	Jul 2019	Aug 2019	Sep 2019	Oct 2019	CYTD Jan-Oct 2018	CYTD Jan-Oct 2019
141	140	143	150	139	139	135	127	140	150	157	152	149	79.9	143.8

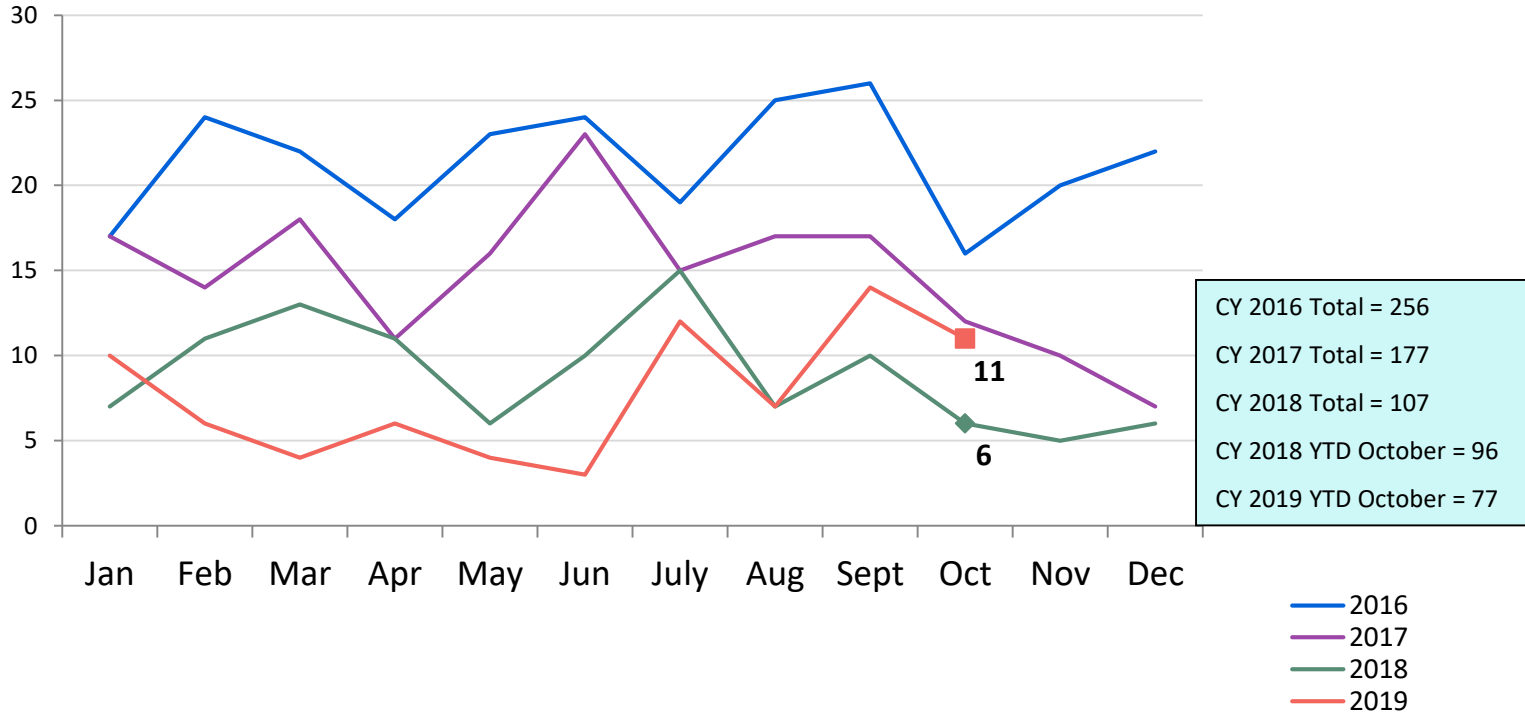
*Case Type definitions: Adolescent Offender (AO) is a person 16 years of age charged with a felony on or after 10/1/18 and a person 17 years of age charged with a felony on or after 10/1/19; Juvenile Delinquent (JD) is a person 7-15 years of age who has committed an act which would be considered a crime if the person were old enough and capable of being treated as an adult. Sixteen year olds charged with a misdemeanor (except those charged under NYS Vehicle and Traffic Law) on or after 10/1/18 and 17 year olds charged on or after 10/1/19 are also JDs.; Juvenile Offender (JO) a person 13-15 years of age with a serious violent felony charge; Pre-Raise the Age is a person who was 16 or 17 years old when transferred off Rikers Island 10/1/18 and 17 year olds charged with crimes 10/1/18- 9/30/19; and Other case type includes youth detained for other authorities and ACS warrants.

Total Monthly Releases from Detention January 2016 – October 2019*

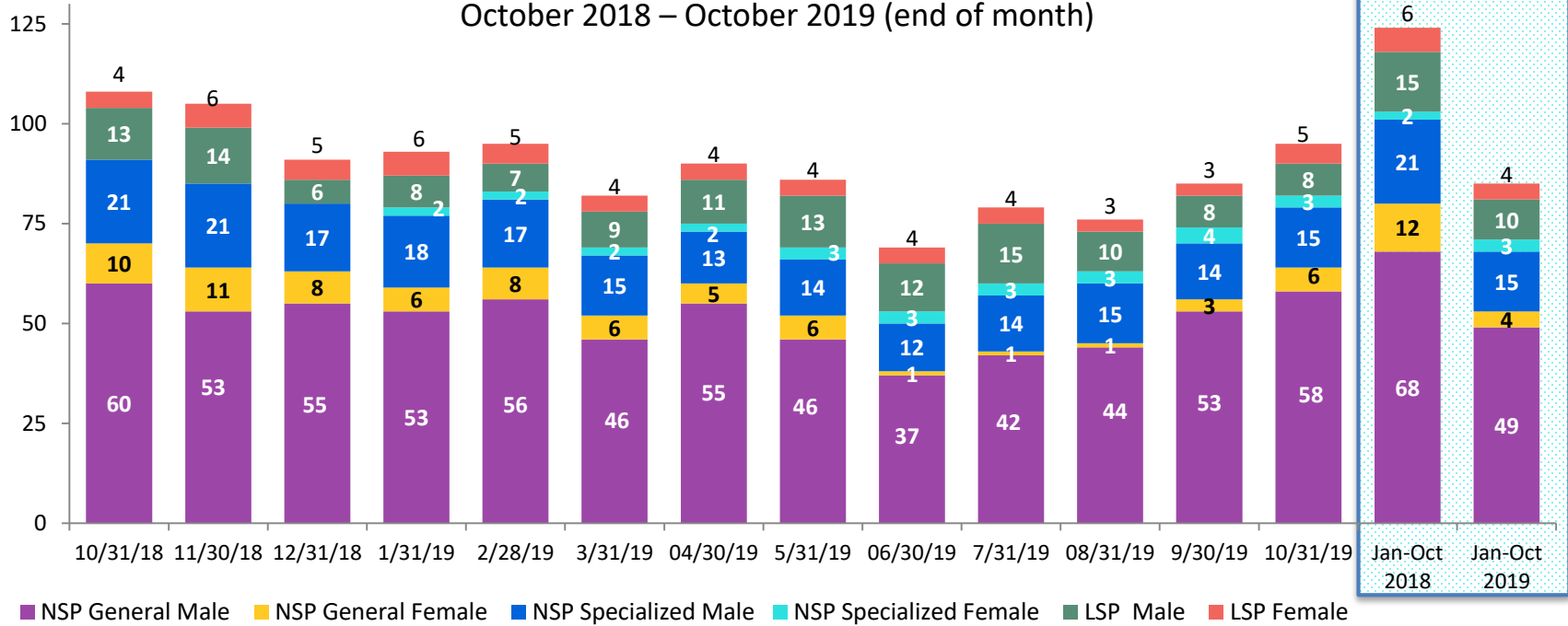


*Beginning in October 2018 detention releases include releases from the Horizon Juvenile Facility of 16 and 17 year olds moved off Rikers Island and pre-Raise the Age 17 year olds.

Close to Home Admissions*
January 2016 – October 2019

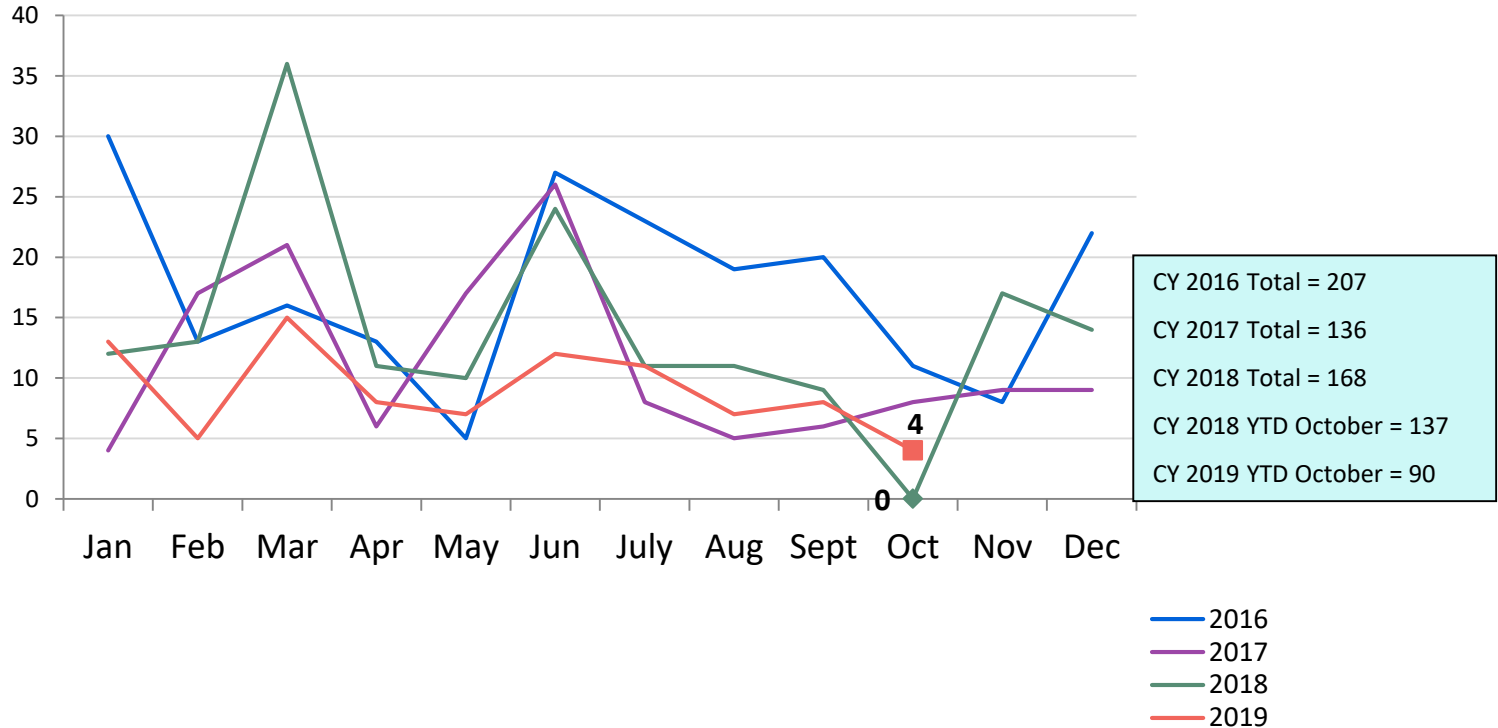


CTH Placement, in 24-hour Care
October 2018 – October 2019 (end of month)



Number in Placement														CYTD Jan-Oct 2018	CYTD Jan-Oct 2019
	10/31/18	11/30/18	12/31/18	1/31/19	2/28/19	3/31/19	4/30/19	5/31/19	6/30/19	7/31/19	8/31/19	9/30/19	10/31/19		
NSP	91	85	80	79	83	69	75	69	53	60	63	74	82	103	71
LSP	17	20	11	14	12	13	15	17	16	19	13	11	13	21	14

Releases from Close to Home Placement to Aftercare
January 2016 – October 2019



Appendix

Figure 1: SCR Intakes by Reporter Group, August 2018 – October 2018 and August 2019 – October 2019

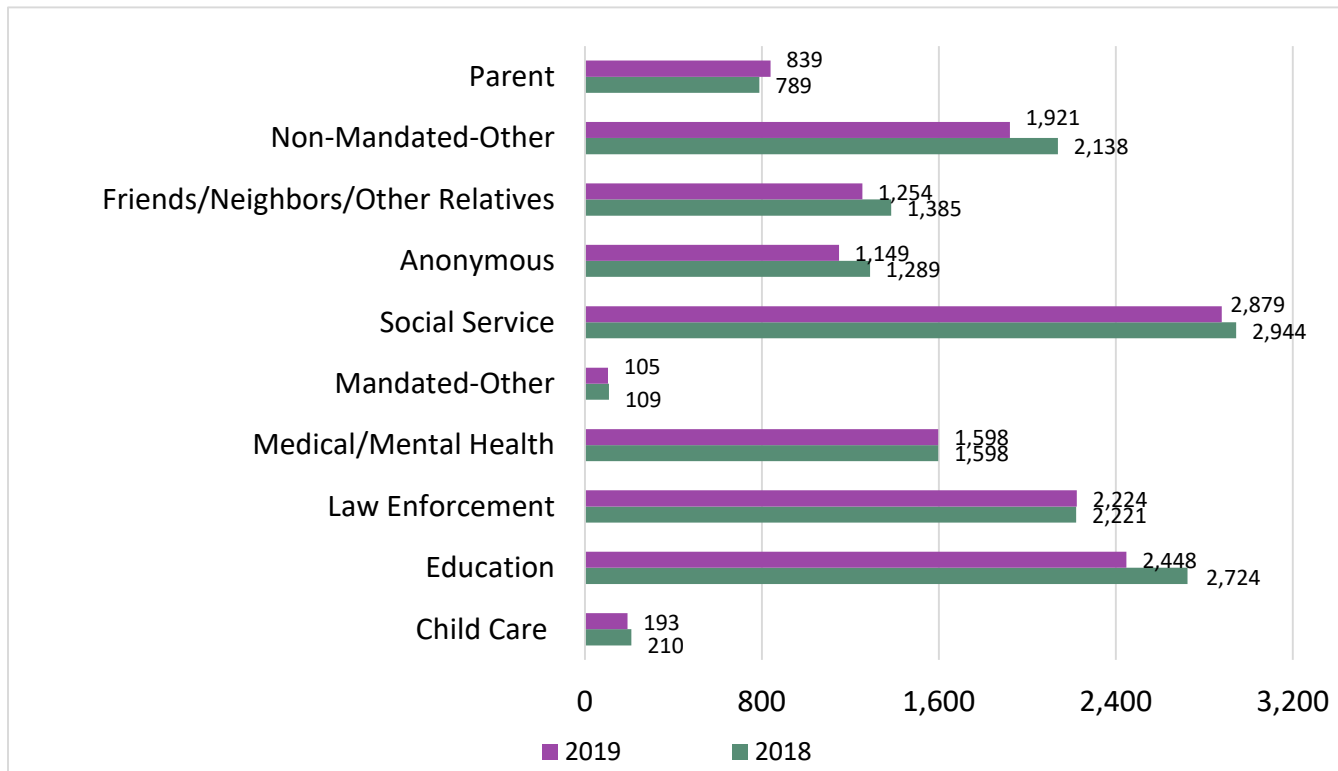
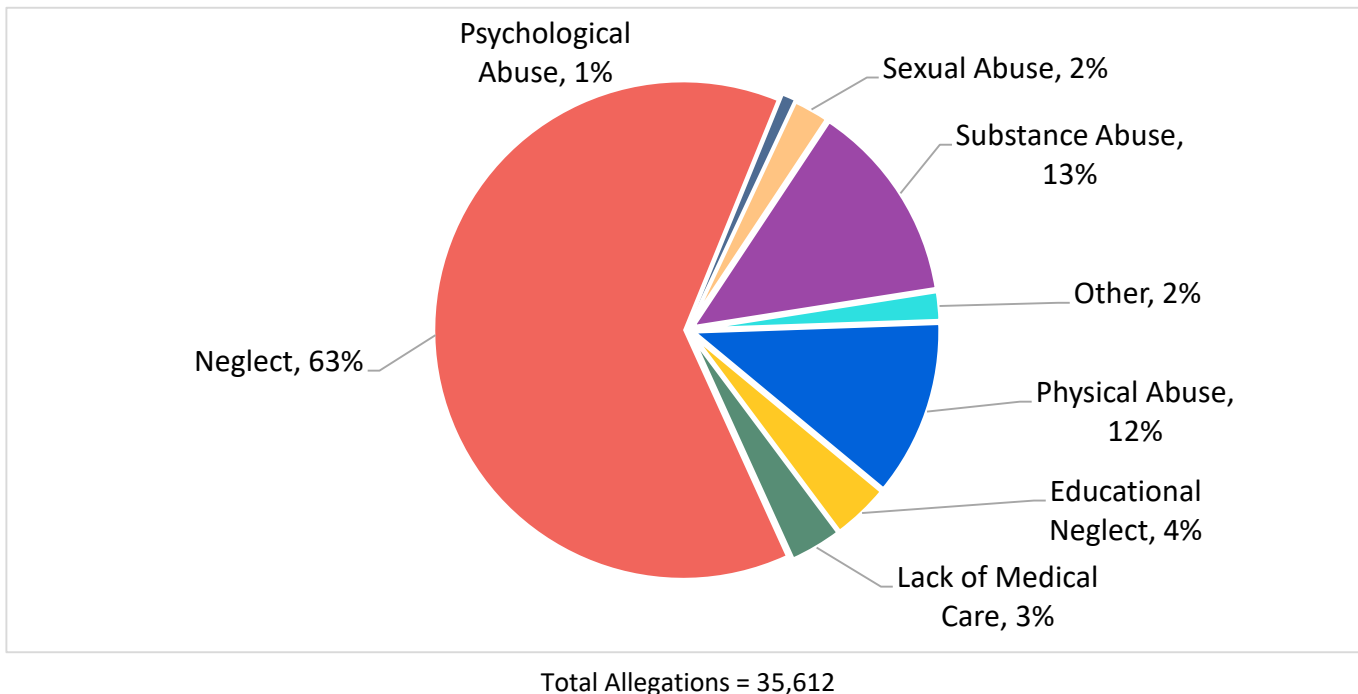


Figure 2: SCR Allegations
August 2019 – October 2019



Allegations are grouped as follows: Physical Abuse - burn, fatality, fracture, choking, twisting, shaking, excessive corporal punishment, internal injuries, lacerations, bruises, welts, poisoning, noxious substances; Educational Neglect – educational neglect; Lack of Medical Care – lack of medical care; Neglect - inadequate guardianship, inadequate food, clothing, shelter, lack of supervision, malnutrition, failure to thrive, swelling, dislocations, sprains; Psychological Abuse - isolation, emotional neglect; Sexual Abuse – sexual abuse; Substance Abuse - parental drug use, child drug use; and Other -abandonment, inappropriate custodial conduct.

Figure 3: SCR Investigations by Borough
August 2018 – October 2018 and August 2019 – October 2019

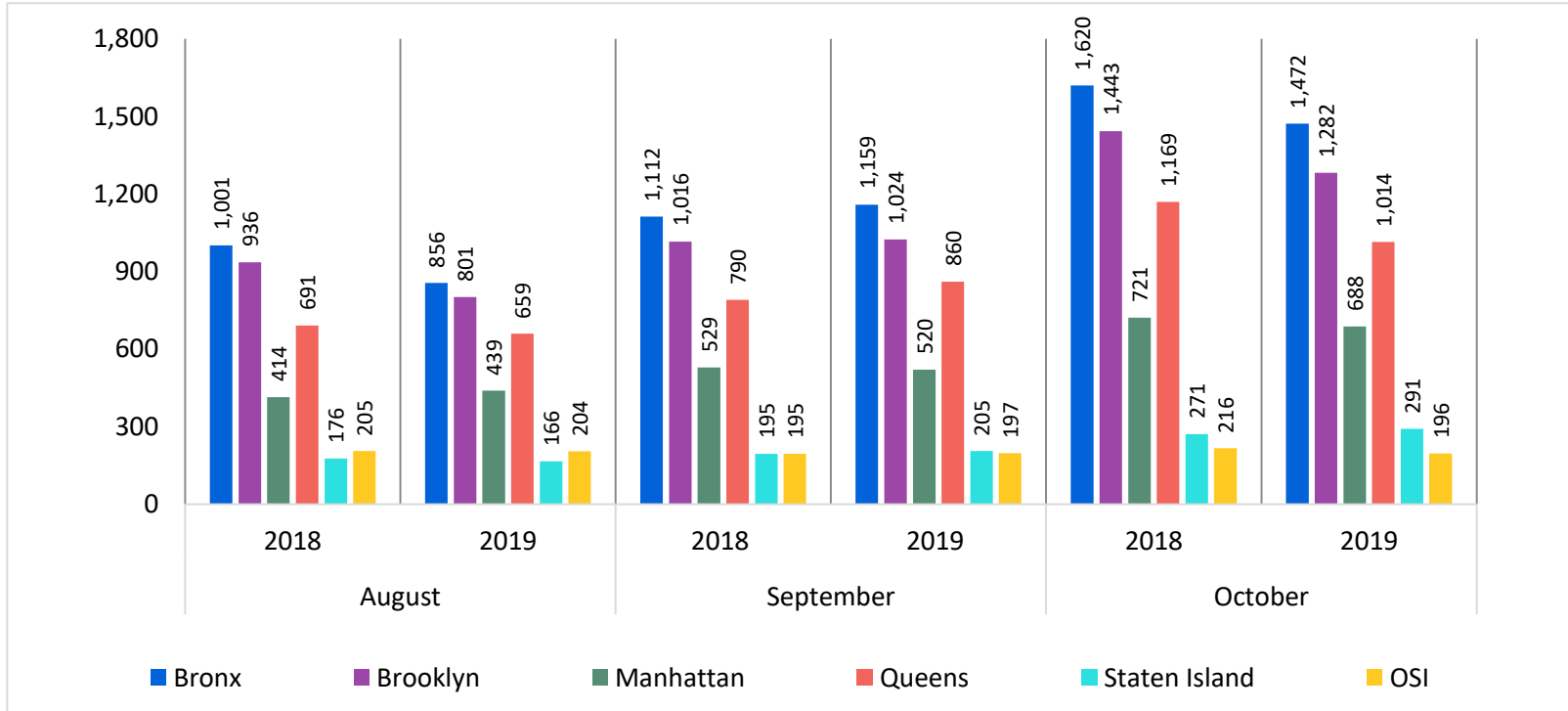


Table 1: SCR Investigations Changes by Borough
August 2018 – October 2018 and August 2019 – October 2019

Month	Year	Bronx	Brooklyn	Manhattan	Queens	Staten Island	OSI	Other	Total
August	2018	1,001	936	414	691	176	205	158	3,581
	2019	856	801	439	659	166	204	131	3,256
	% Change	-14.5%	-14.4%	6.0%	-4.6%	-5.7%	-0.5%	-17.1%	-9.1%
September	2018	1,112	1,016	529	790	195	195	154	3,991
	2019	1,159	1,024	520	860	205	197	156	4,121
	% Change	4.2%	0.8%	-1.7%	8.9%	5.1%	1.0%	1.3%	3.3%
October	2018	1,620	1,443	721	1,169	271	216	186	5,626
	2019	1,472	1,282	688	1,014	291	196	156	5,099
	% Change	-9.1%	-11.2%	-4.6%	-13.3%	7.4%	-9.3%	-16.1%	-9.4%
Total	2018	3,733	3,395	1,664	2,650	642	616	498	13,198
	2019	3,487	3,107	1,647	2,533	662	597	443	12,476
	% Change	-6.6%	-8.5%	-1.0%	-4.4%	3.1%	-3.1%	-11.0%	-5.5%

**Table 2: Child Welfare Prevention Cases: New and Closed
January 2017 - October 2019**

Year	Month	New Cases	Closed Cases
2017	Jan-17	549	449
	Feb-17	601	920
	Mar-17	864	1,032
	Apr-17	644	780
	May-17	789	925
	Jun-17	908	944
	Jul-17	764	852
	Aug-17	874	864
	Sep-17	840	747
	Oct-17	870	762
	Nov-17	778	737
	Dec-17	817	728
2018	Jan-18	728	567
	Feb-18	776	783
	Mar-18	879	776
	Apr-18	794	613
	May-18	756	857
	Jun-18	736	837
	Jul-18	808	856
	Aug-18	893	954
	Sep-18	752	755
	Oct-18	858	767
	Nov-18	789	699
	Dec-18	849	717
2019	Jan-19	875	708
	Feb-19	767	726
	Mar-19	891	856
	Apr-19	844	802
	May-19	843	864
	Jun-19	806	841
	Jul-19	855	963
	Aug-19	880	929
	Sep-19	763	761
	Oct-19	761	881

**Table 3: Referrals to Child Welfare Prevention Services by Source
January 2017 - October 2019**

Year	Month	Total Referrals	DCP	FC Agencies	PPRS Transfer	School	Self	Other Sources*
2017	Jan-17	1,046	78.5%	1.4%	6.7%	0.7%	3.1%	9.7%
	Feb-17	1,067	77.7%	0.8%	6.7%	0.8%	3.8%	10.1%
	Mar-17	1,383	79.1%	0.6%	6.9%	0.9%	4.0%	8.5%
	Apr-17	1,116	81.2%	1.0%	5.9%	1.1%	1.4%	9.4%
	May-17	1,335	81.9%	0.9%	5.5%	1.3%	2.8%	7.6%
	Jun-17	1,449	82.3%	0.8%	5.9%	1.2%	2.9%	6.9%
	Jul-17	1,273	83.3%	0.9%	7.9%	0.7%	1.9%	5.3%
	Aug-17	1,429	82.7%	0.6%	9.3%	0.3%	1.7%	5.2%
	Sep-17	1,383	79.6%	1.6%	7.7%	0.8%	2.8%	7.4%
	Oct-17	1,489	77.5%	1.5%	7.5%	1.0%	3.1%	9.4%
	Nov-17	1,235	75.1%	1.5%	8.8%	2.2%	3.6%	8.8%
	Dec-17	1,227	70.5%	1.6%	10.2%	2.4%	3.7%	11.5%
2018	Jan-18	1,399	74.5%	1.5%	10.7%	1.4%	2.9%	9.0%
	Feb-18	1,302	76.8%	1.5%	7.5%	1.3%	3.5%	9.4%
	Mar-18	1,396	79.7%	1.5%	7.4%	1.2%	2.6%	7.5%
	Apr-18	1,383	80.0%	1.2%	5.9%	1.1%	3.1%	8.7%
	May-18	1,189	78.8%	1.3%	7.0%	1.0%	3.3%	8.7%
	Jun-18	1,284	81.9%	0.5%	7.6%	0.9%	3.2%	6.0%
	Jul-18	1,403	82.5%	0.7%	8.3%	0.6%	2.4%	5.5%
	Aug-18	1,391	82.1%	1.7%	6.8%	0.4%	2.7%	6.3%
	Sep-18	1,135	84.4%	1.5%	7.0%	0.9%	4.1%	2.1%
	Oct-18	1,345	78.4%	1.5%	8.0%	1.2%	3.9%	7.0%
	Nov-18	1,107	73.8%	1.4%	9.5%	1.5%	4.3%	9.5%
	Dec-18	1,179	68.7%	1.7%	10.9%	2.7%	5.1%	10.9%
2019	Jan-19	1,373	74.3%	1.7%	8.4%	1.6%	3.8%	10.3%
	Feb-19	1,096	77.5%	0.9%	7.9%	2.2%	2.8%	8.7%
	Mar-19	1,292	72.4%	1.2%	10.4%	1.5%	4.4%	10.1%
	Apr-19	1,299	76.9%	1.5%	7.5%	2.8%	3.8%	7.4%
	May-19	1,312	80.0%	1.1%	7.9%	1.8%	3.2%	6.1%
	Jun-19	1,169	82.5%	1.4%	7.4%	0.7%	2.7%	5.3%
	Jul-19	1,322	81.3%	0.9%	7.1%	0.8%	4.5%	5.4%
	Aug-19	1,239	77.4%	1.9%	7.4%	0.7%	5.9%	6.6%
	Sep-19	1,160	77.3%	1.4%	10.3%	1.0%	3.5%	6.4%
	Oct-19	1,212	73.7%	1.5%	11.9%	1.1%	3.4%	8.5%

Note: Data includes all referrals – accepted and rejected

*Other Community Sources includes the Department of Homeless Services, Family Court, FAP, Hospitals and Medical facilities, the NYC Housing Authority, Probation, and Sponsor Agencies.