

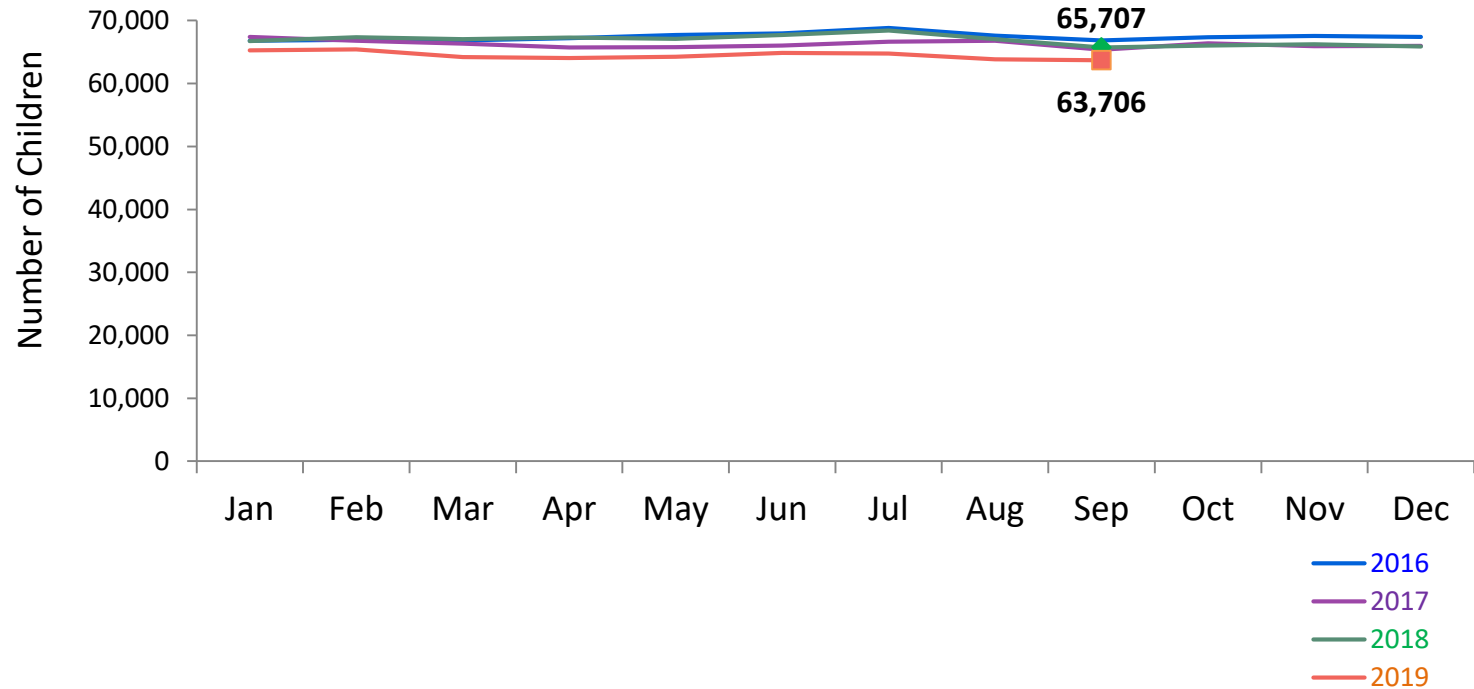


FLASH  
monthly indicator  
REPORT

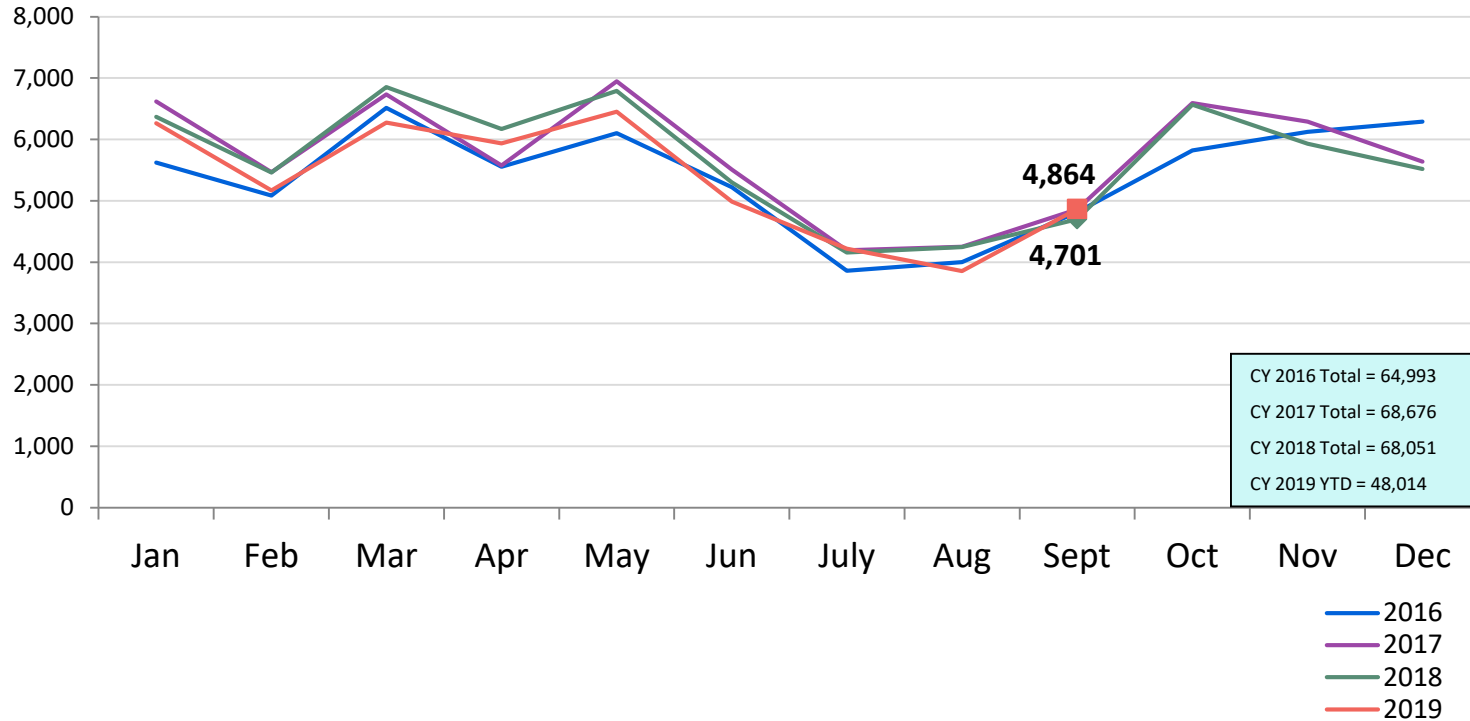
The background image shows children sitting on asphalt, drawing colorful patterns with chalk. The text 'FLASH monthly indicator REPORT' is overlaid in white, bold, sans-serif font.

October 2019

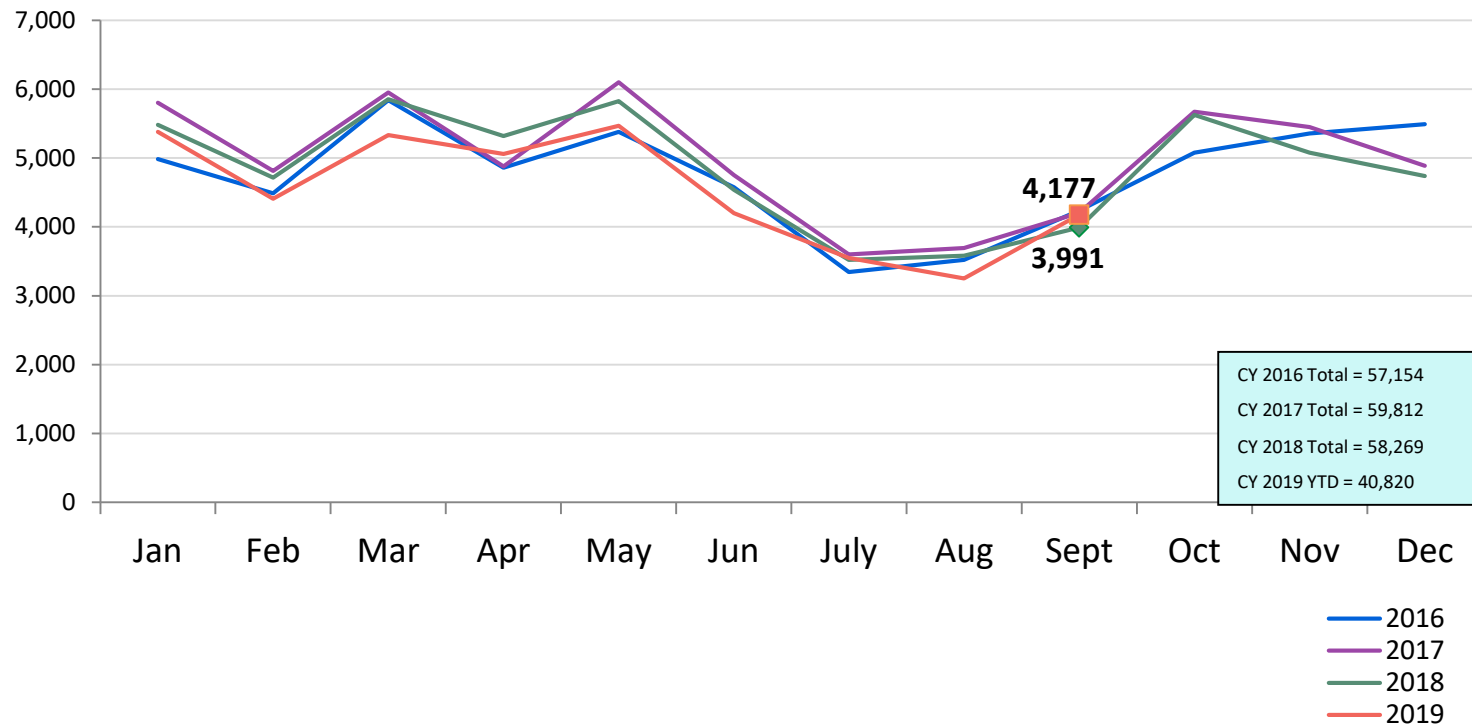
Children Using Vouchers for Child Care  
January 2016 – September 2019 (End of Month)



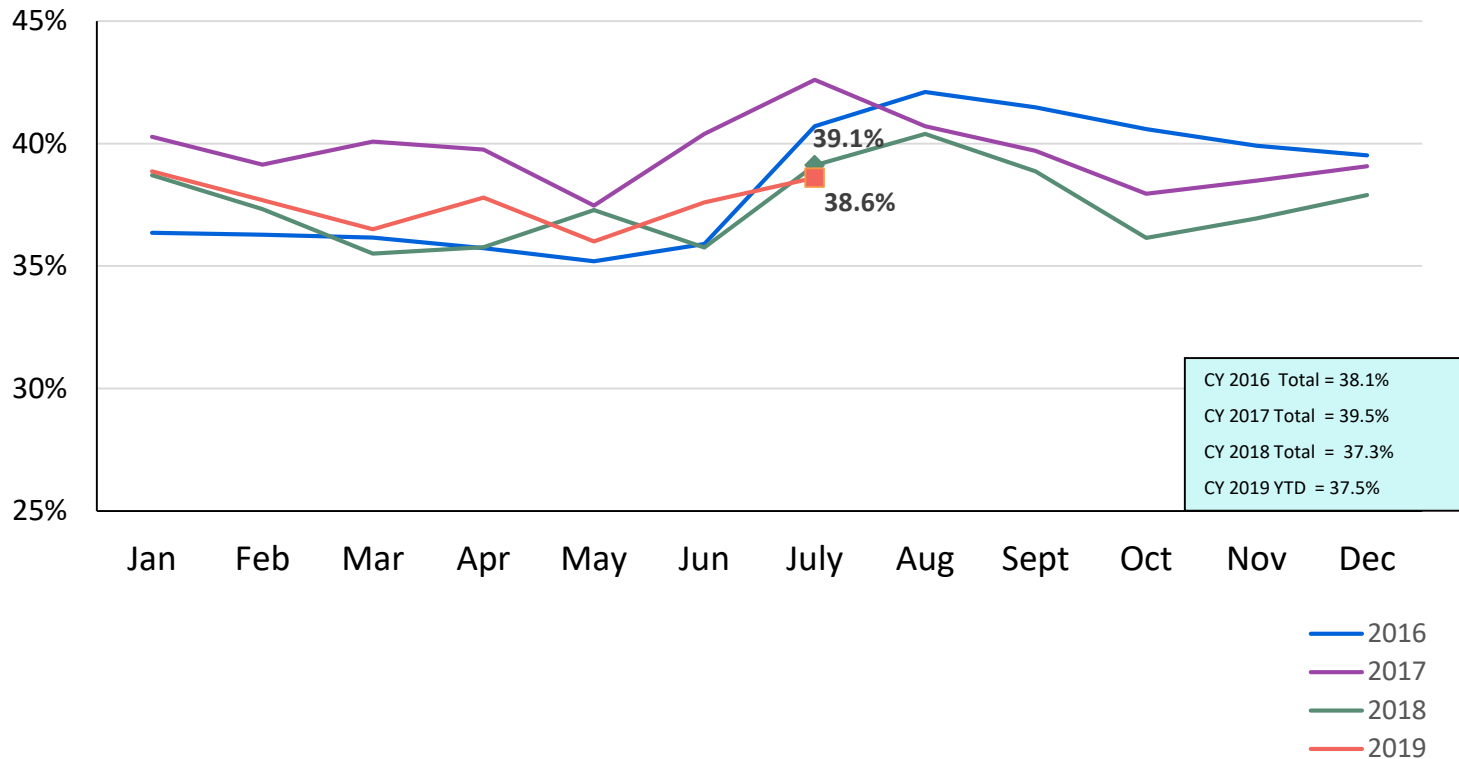
### SCR Intakes January 2016 – September 2019



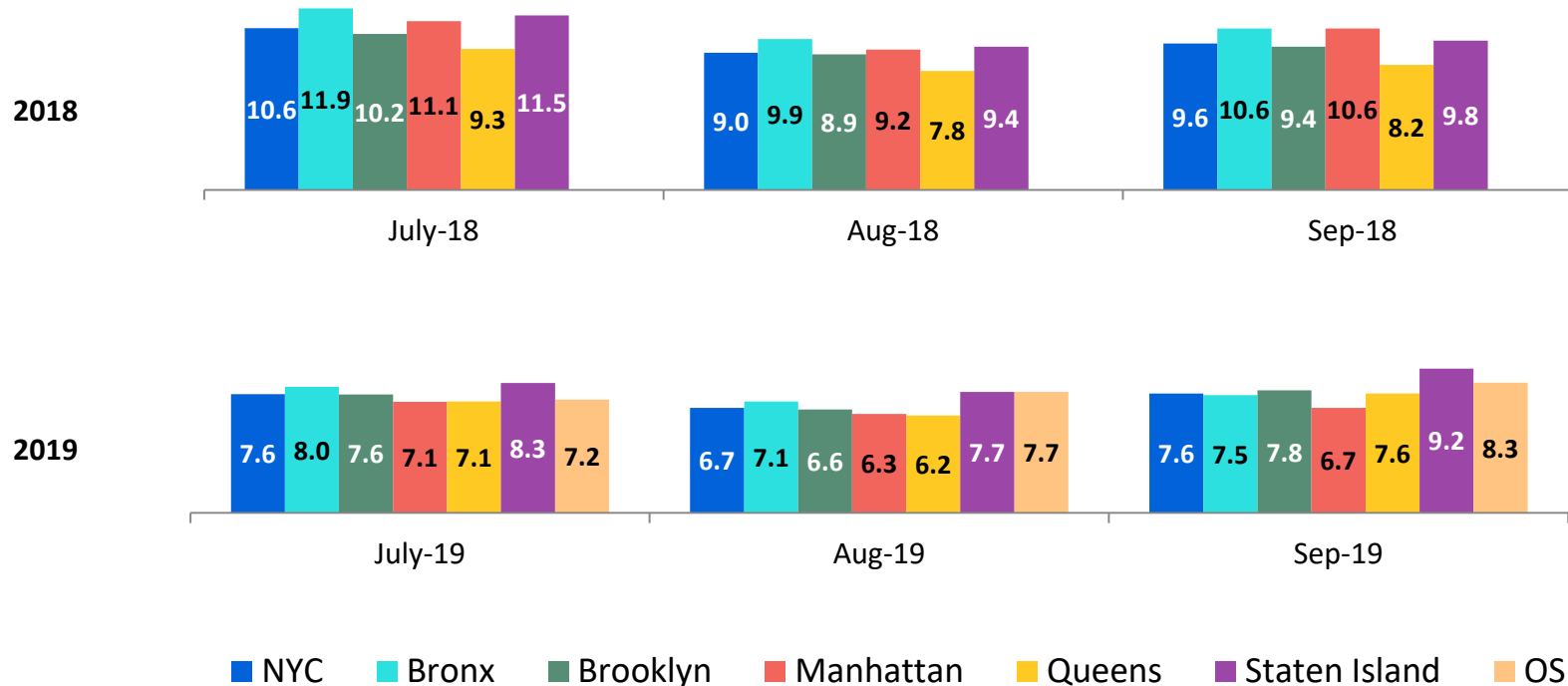
### SCR Consolidated Investigations January 2016 – September 2019



Percent of Investigations that Found Some Credible Evidence of Abuse or Neglect  
January 2016 – July 2019

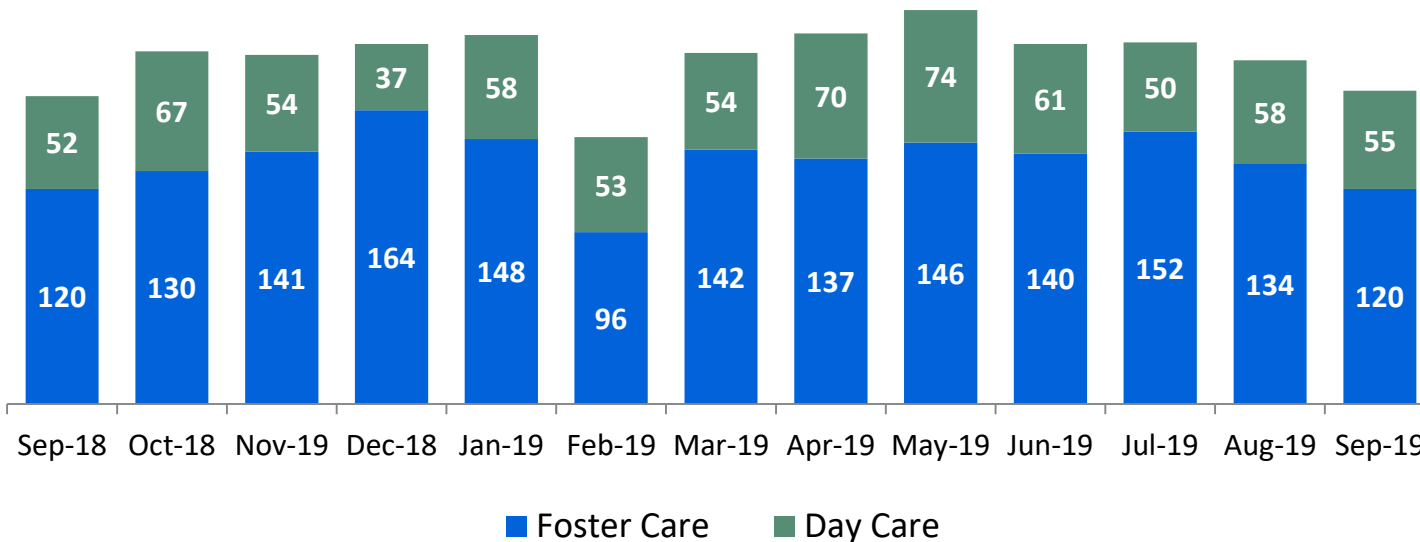


### Average Child Protection Caseload\* July 2018 – September 2018 and July 2019 – September 2019



\*Prior to December 2018 caseloads are of Protective/Diagnostic Unit (Child Protection, School Based, Sex Abuse and Hospital Units) caseworkers only. Beginning December 2018, all caseload carrying Child Protection Specialists (CPS) in investigative and Family Assessment Response Units are included. Includes CPS in Primary and Case Manager roles only.

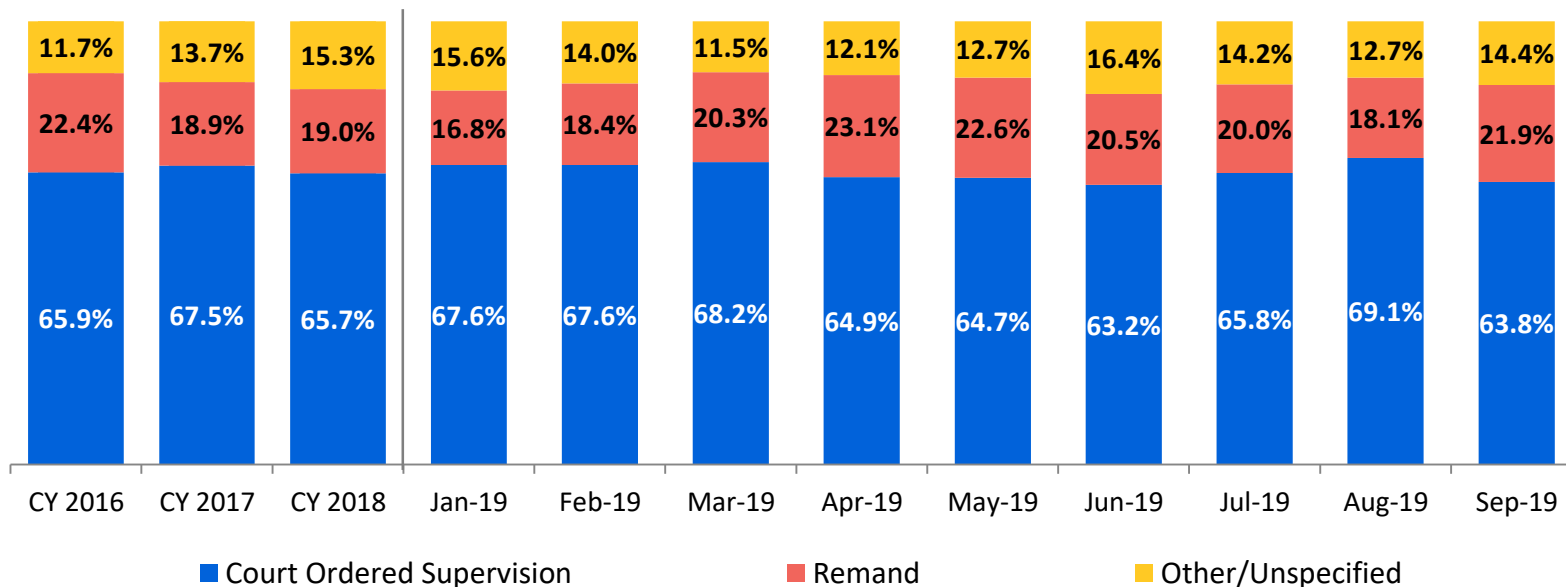
### OSI Foster Care and Day Care\* Investigations September 2018 – September 2019



	Sep 2018	Oct 2018	Nov 2018	Dec 2018	Jan 2019	Feb 2019	Mar 2019	Apr 2019	May 2019	Jun 2019	Jul 2019	Aug 2019	Sep 2019
Number of Investigations	172	197	195	201	206	149	196	207	220	201	202	192	175

\*Day Care investigations include alleged abuse or maltreatment of children perpetrated by someone who cares for children in a setting that is not the child's familial home and that requires state or local government approval and is subject to state laws, regulations, and oversight. This includes, but is not limited to, ACS Early Care and Education programs.

### Article 10 Filings and Initial Hearing Outcomes, Children CY 2016 – September 2019



	CY 2016	CY 2017	CY 2018	Jan 2019	Feb 2019	Mar 2019	Apr 2019	May 2019	Jun 2019	Jul 2019	Aug 2019	Sep 2019
Children with Article 10 Filings	10,973	15,975	13,319	1,092	1,056	1,040	1,127	1,080	1,002	1,021	1,021	836

Note: The category "Other/Unspecified" includes released with no supervision, no order issued and no outcome specified.



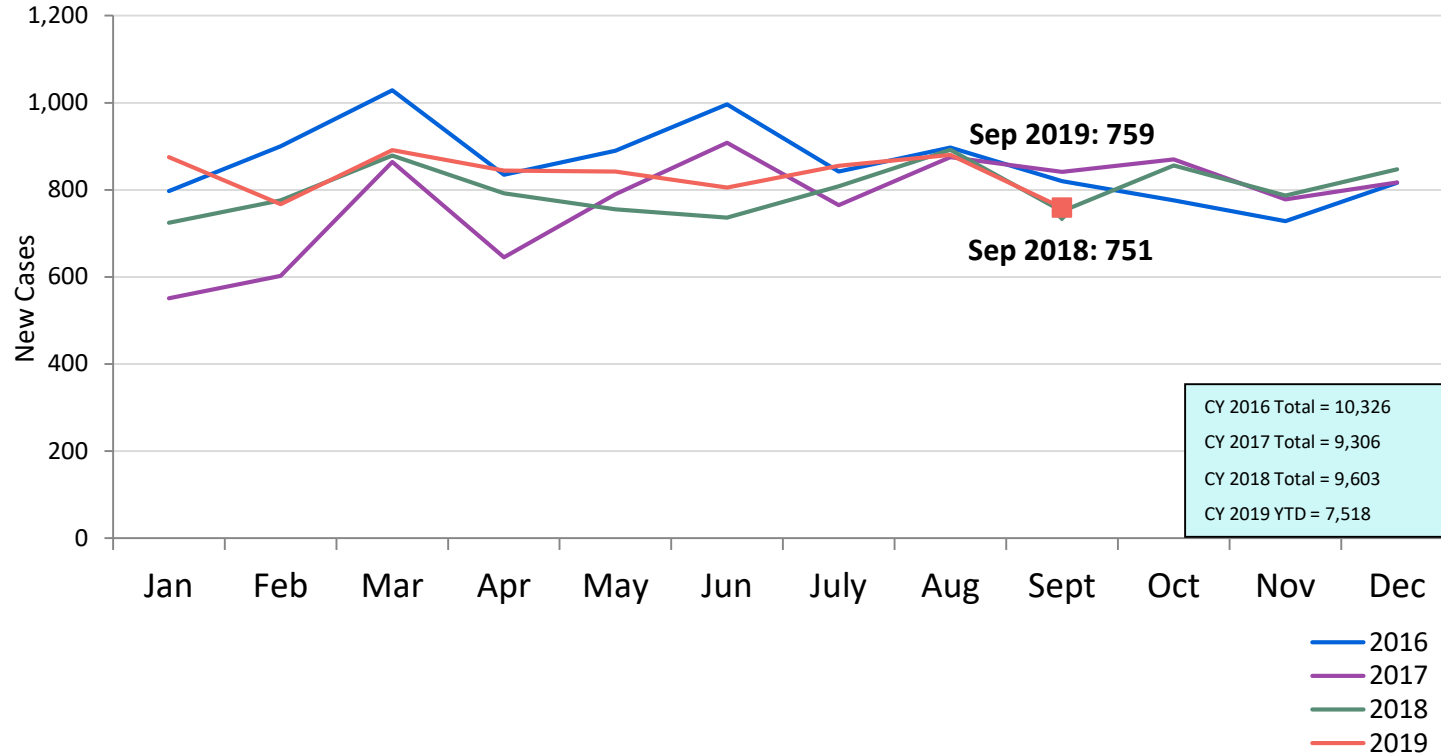
### Remands Approved at Initial Article 10 Hearing by Removal Status September 2018 – September 2019



■ Pre-Filing Emergency Removals (court approved at initial hearing)  
 ■ Post-Filing Removals (court ordered at initial hearing)

	Sep 2018	Oct 2018	Nov 2018	Dec 2018	Jan 2019	Feb 2019	Mar 2019	Apr 2019	May 2019	Jun 2019	Jul 2019	Aug 2019	Sep 2019
Children Remanded	151	297	167	193	184	194	211	260	244	205	204	185	183

### New Child Welfare Prevention Cases January 2016 – September 2019

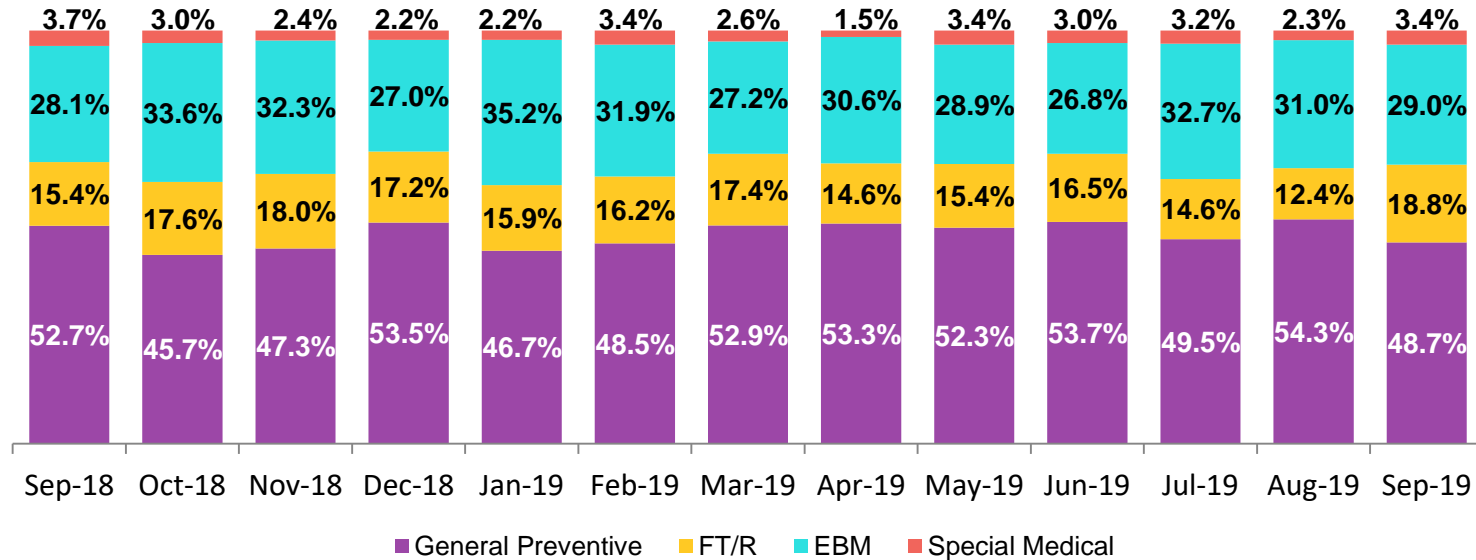


\*New prevention cases do not include cases transferred from one preventive program to another.

See Pages 31 and 32 of the Appendix for supporting data.

New Child Welfare Prevention Cases by Program Type \*

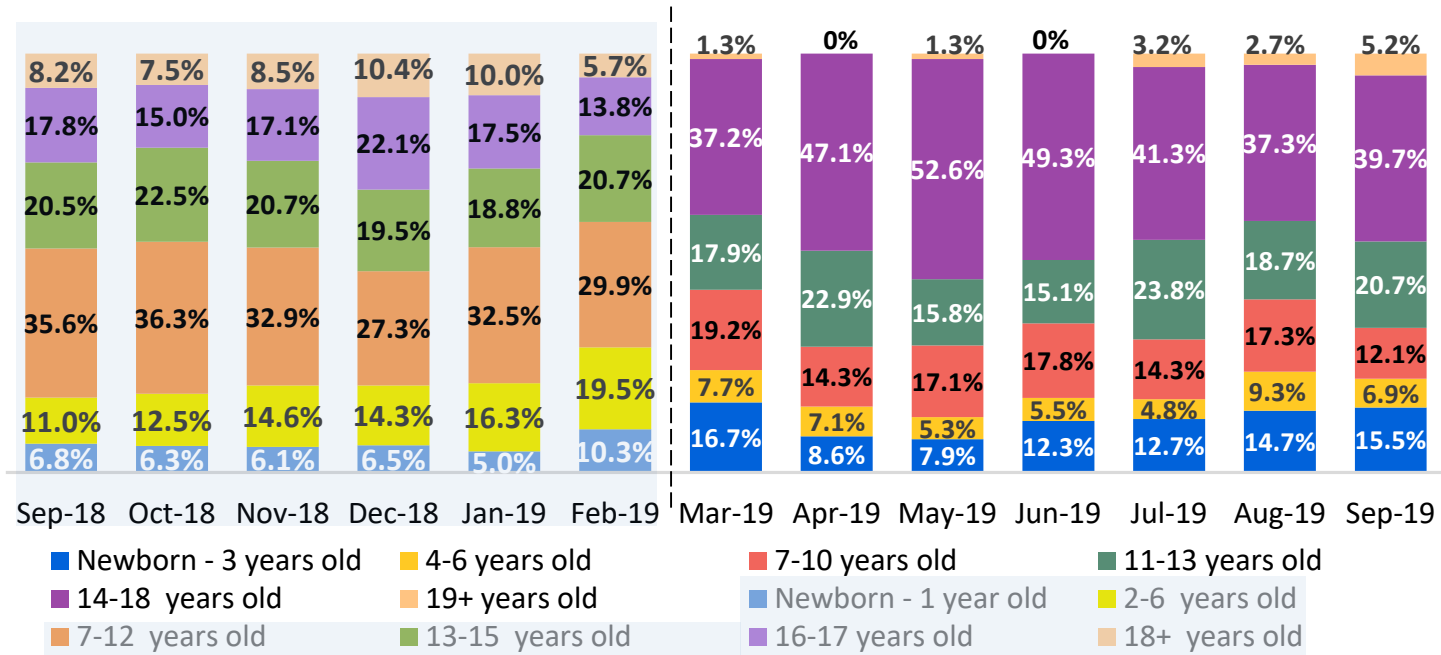
September 2018 – September 2019



	Sep 2018	Oct 2018	Nov 2018	Dec 2018	Jan 2019	Feb 2019	Mar 2019	Apr 2019	May 2019	Jun 2019	Jul 2019	Aug 2019	Sep 2019
Number of New Preventive Cases	751	856	787	847	875	767	891	844	842	805	855	880	759

\* New prevention cases do not include cases transferred from one prevention program to another.

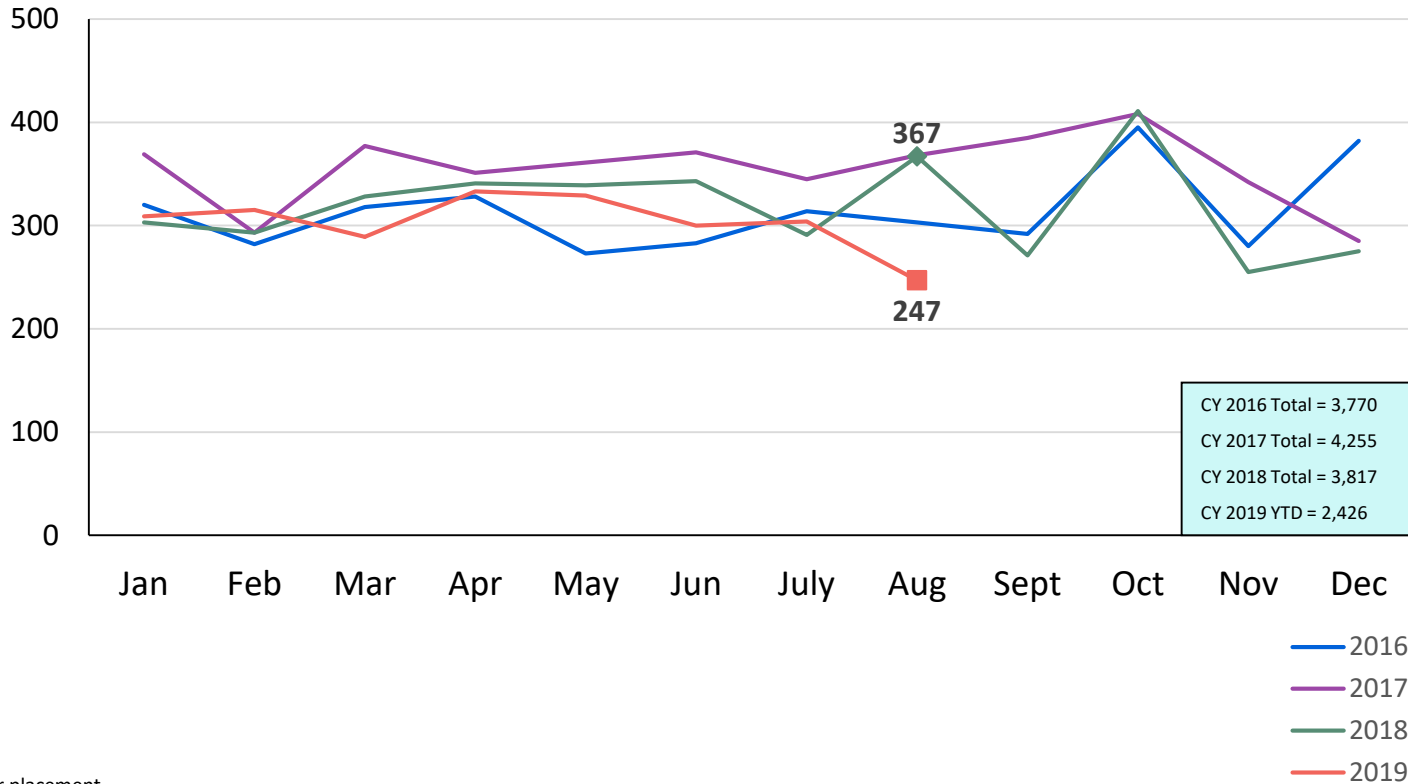
### Average Daily Children's Center Population September 2018 – September 2019



	Sep 2018*	Oct 2018*	Nov 2018*	Dec 2018*	Jan 2019*	Feb 2019*	Mar 2019	Apr 2019	May 2019	Jun 2019	Jul 2019	Aug 2019	Sep 2019
Average Number of Children	73	80	82	77	80	87	78	70	76	73	63	75	58

\* Different age groups were used from September 2018 to February 2019.

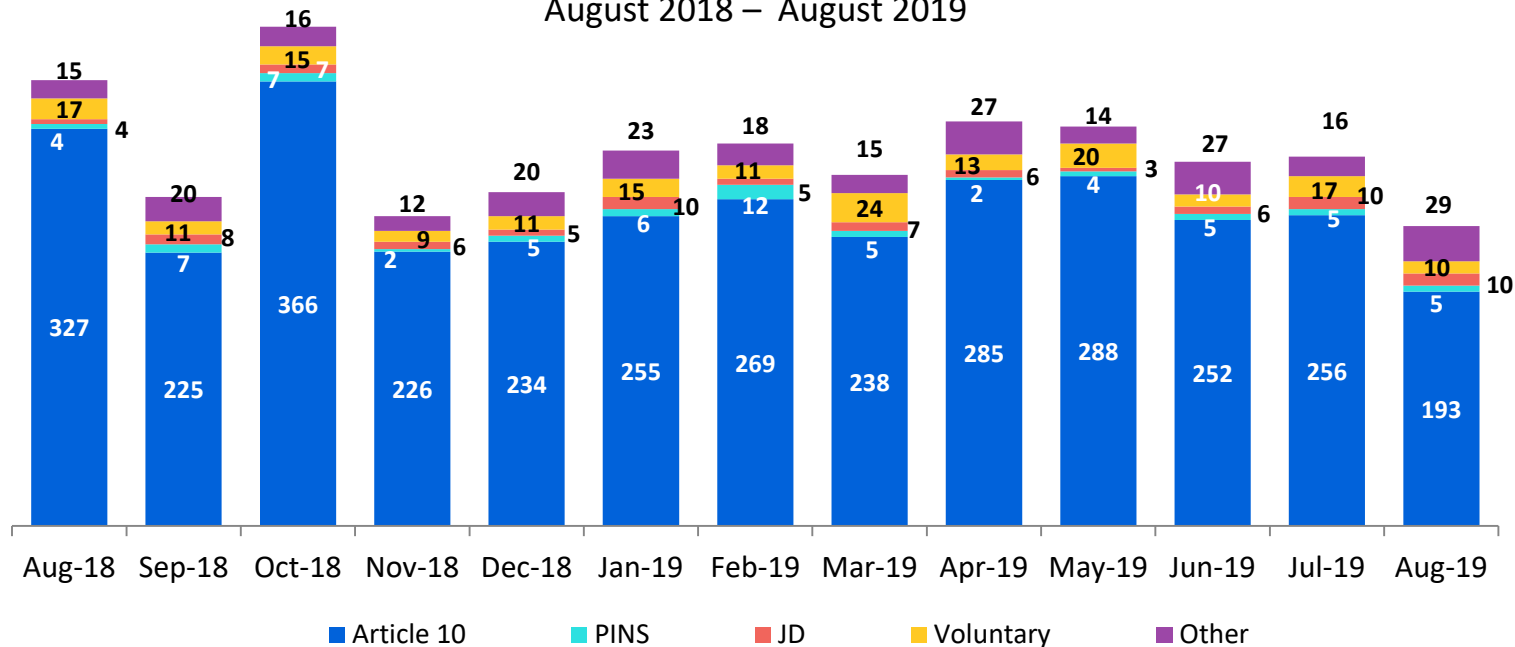
New Placements of Children into Foster Care\*  
January 2016 – August 2019



\*Includes all reasons for placement.

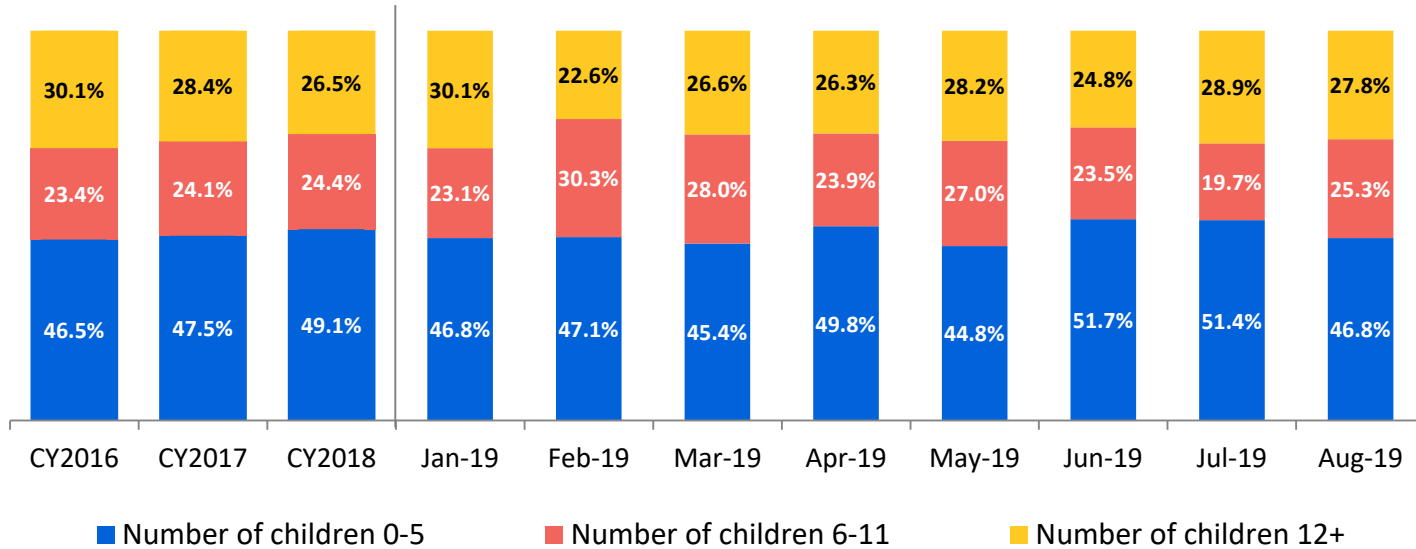
### Reason for New Placements of Children into Foster Care

August 2018 – August 2019



	Aug 2018	Sep 2018	Oct 2018	Nov 2018	Dec 2018	Jan 2019	Feb 2019	Mar 2019	Apr 2019	May 2019	Jun 2019	Jul 2019	Aug 2019
Number of Placements	367	271	411	255	275	309	315	289	333	329	300	304	247

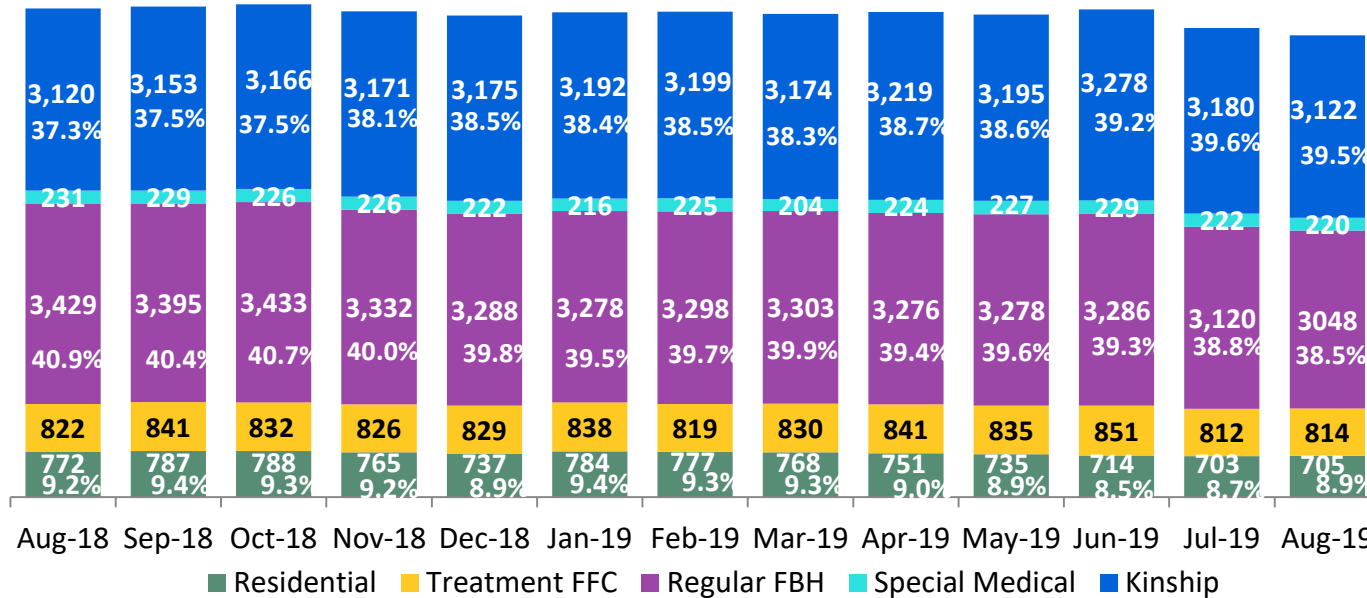
### New Placements of Children into Foster Care\* by Age CY 2016 – August 2019



	CY 2016	CY 2017	CY 2018	Jan 2019	Feb 2019	Mar 2019	Apr 2019	May 2019	Jun 2019	Jul 2019	Aug 2019
Number of Placements	3,557	4,097	3,724	299	310	282	327	326	294	294	237

\*Excludes CTH placements.

Children in Foster Care \*  
August 2018 – August 2019 (end of month)

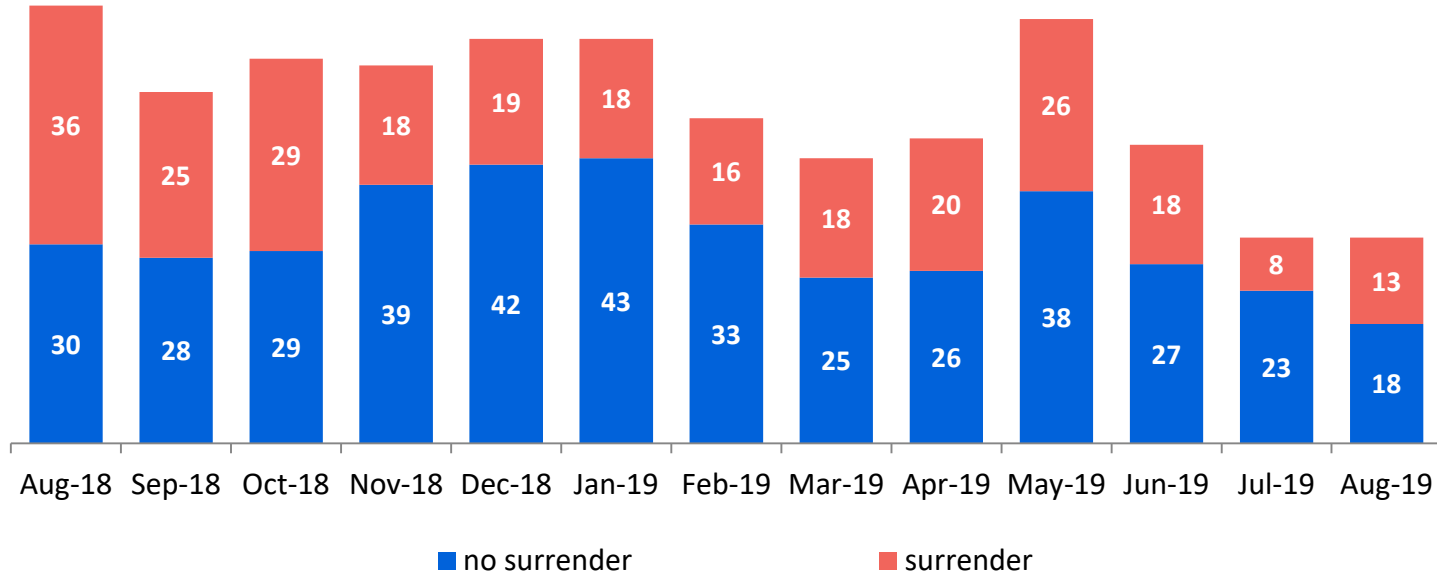


	Aug 2018	Sep 2018	Oct 2018	Nov 2018	Dec 2018	Jan 2019	Feb 2019	Mar 2019	Apr 2019	May 2019	Jun 2019	Jul 2019	Aug 2019
Number in Foster Care	8,374	8,406	8,444	8,320	8,251	8,308	8,317	8,279	8,310	8,270	8,358	8,037	7,909

\*Excludes CTH placements and includes children in 24 hour care and approximately 200 young children who are living in foster homes or residential care facilities with their mothers who are in foster care (8D children).

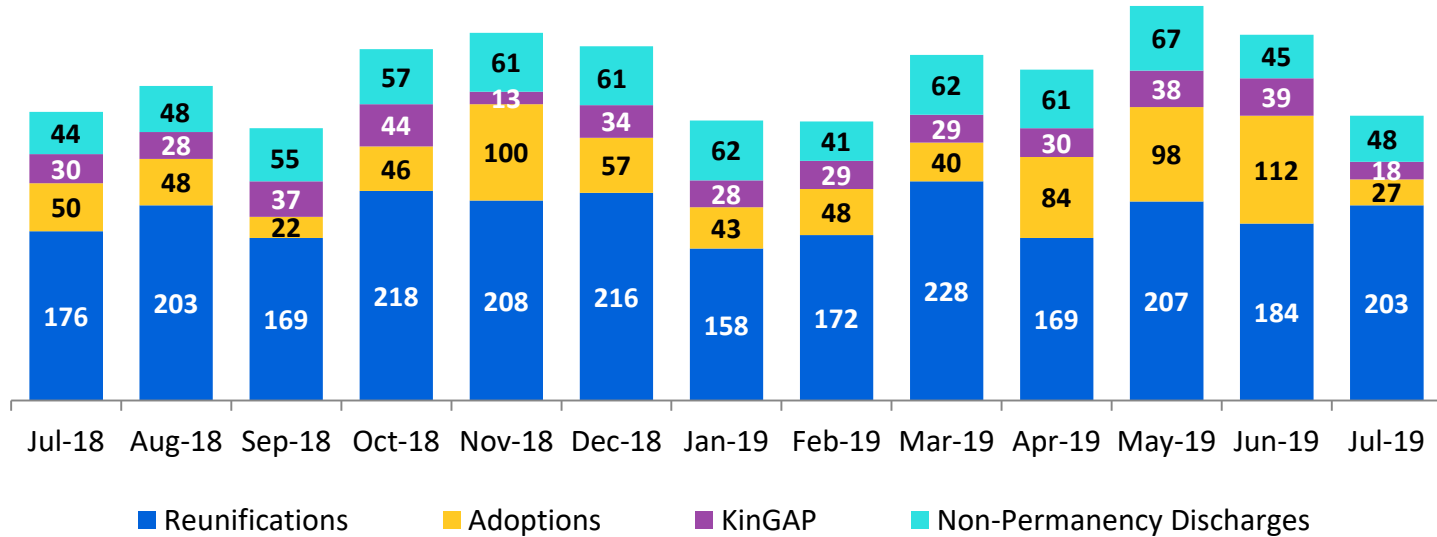


### Children Freed for Adoption, Surrender by at Least One Parent August 2018 – August 2019



	Aug 2018	Sep 2018	Oct 2018	Nov 2018	Dec 2018	Jan 2019	Feb 2019	Mar 2019	Apr 2019	May 2019	Jun 2019	Jul 2019	Aug 2019
Number Freed for Adoption	66	53	58	57	61	61	49	43	46	64	45	31	31

### Permanency and Non-Permanency\* Discharges from Foster Care\*\* July 2018 – July 2019

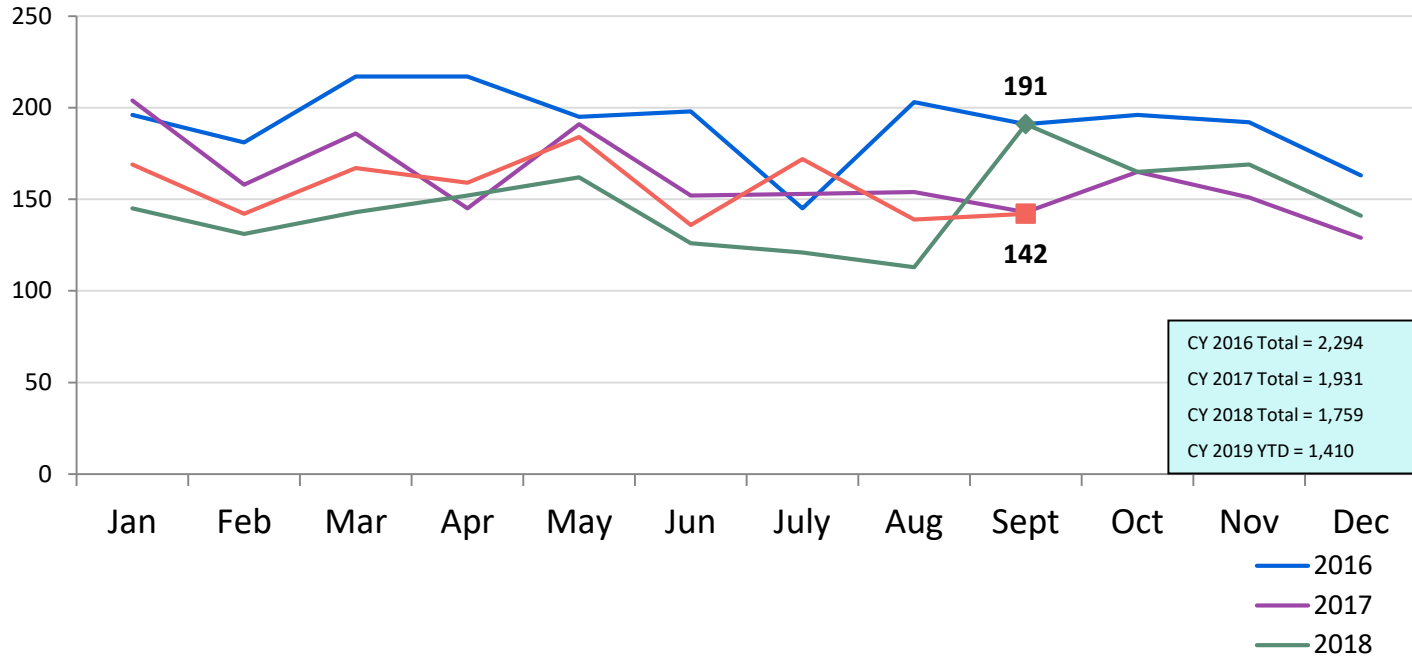


	Jul 2018	Aug 2018	Sep 2018	Oct 2018	Nov 2018	Dec 2018	Jan 2019	Feb 2019	Mar 2019	Apr 2019	May 2019	Jun 2019	Jul 2019
Number of Discharges	300	327	283	365	382	368	291	290	359	344	410	380	296

\*The methodology for non-permanency discharges was changed September 2018. This statistic is not comparable to prior reports. Non-permanency discharges include AWOL, APPLA (youth 18-20 years old discharged to self and youth who reached 21 while in care), and other discharge destinations such as psychiatric institutions and correctional facilities and discharges with unspecified destinations.

\*\*Excludes discharges of youth from CTH placements.

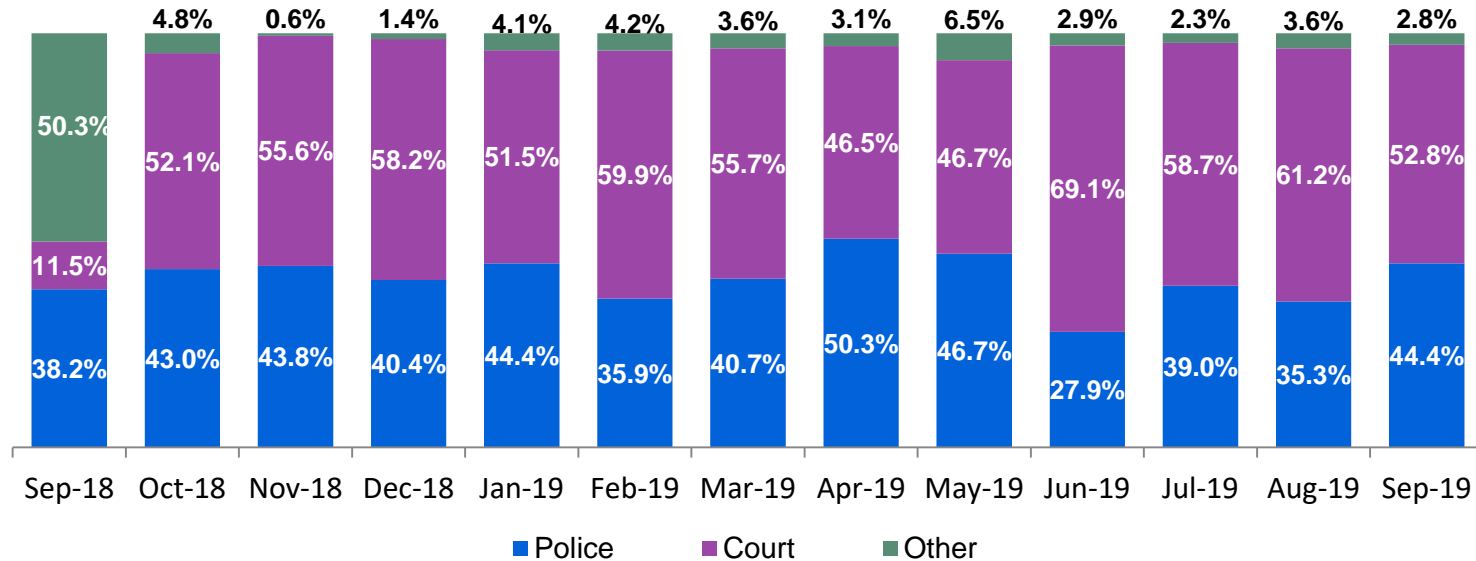
### Total Monthly Admissions to Detention January 2016 – September 2019\*



CY 2016 Total = 2,294  
 CY 2017 Total = 1,931  
 CY 2018 Total = 1,759  
 CY 2019 YTD = 1,410

\*Beginning in September 2018 detention admissions include admissions to the Horizon Juvenile Facility of 16 and 17 year olds moved off Rikers Island and pre-Raise the Age 17 year olds.

### Admit Authority, Detention Admissions September 2018 – September 2019\*

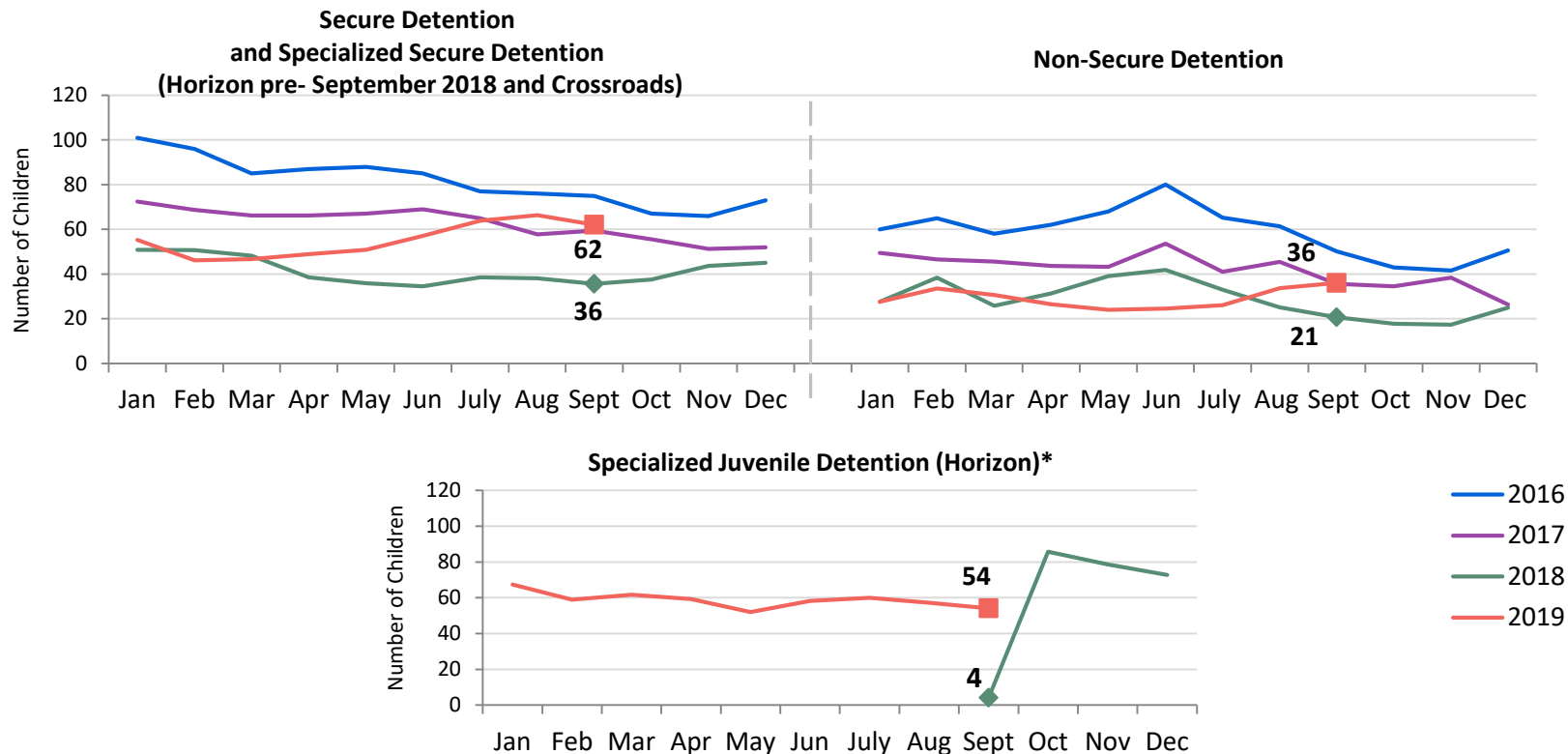


	Sep 2018	Oct 2018	Nov 2018	Dec 2018	Jan 2019	Feb 2019	Mar 2019	Apr 2019	May 2019	Jun 2019	Jul 2019	Aug 2019	Sep 2019
Number of Admissions	191	165	169	141	169	142	167	159	184	136	172	139	142

Note: Other Admit Authority includes the Sheriff Department, Department of Corrections and ACS.

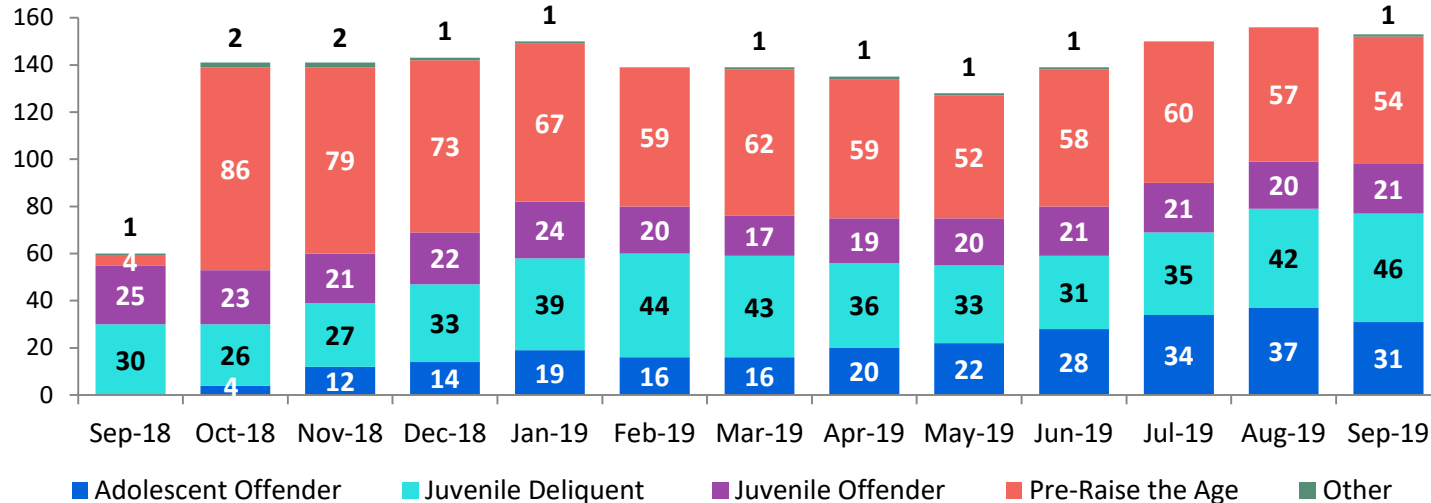
\*Beginning in September 2018 detention admissions include admissions to the Horizon Juvenile Facility of 16 and 17 year olds moved off Rikers Island and pre-Raise the Age 17 year olds.

### Detention Monthly Average Daily Population January 2016 – September 2019\*



\*Beginning in September 2018 the Horizon Juvenile Facility is housing 16 and 17 year olds moved off Rikers Island and pre-Raise the Age 17 year olds.

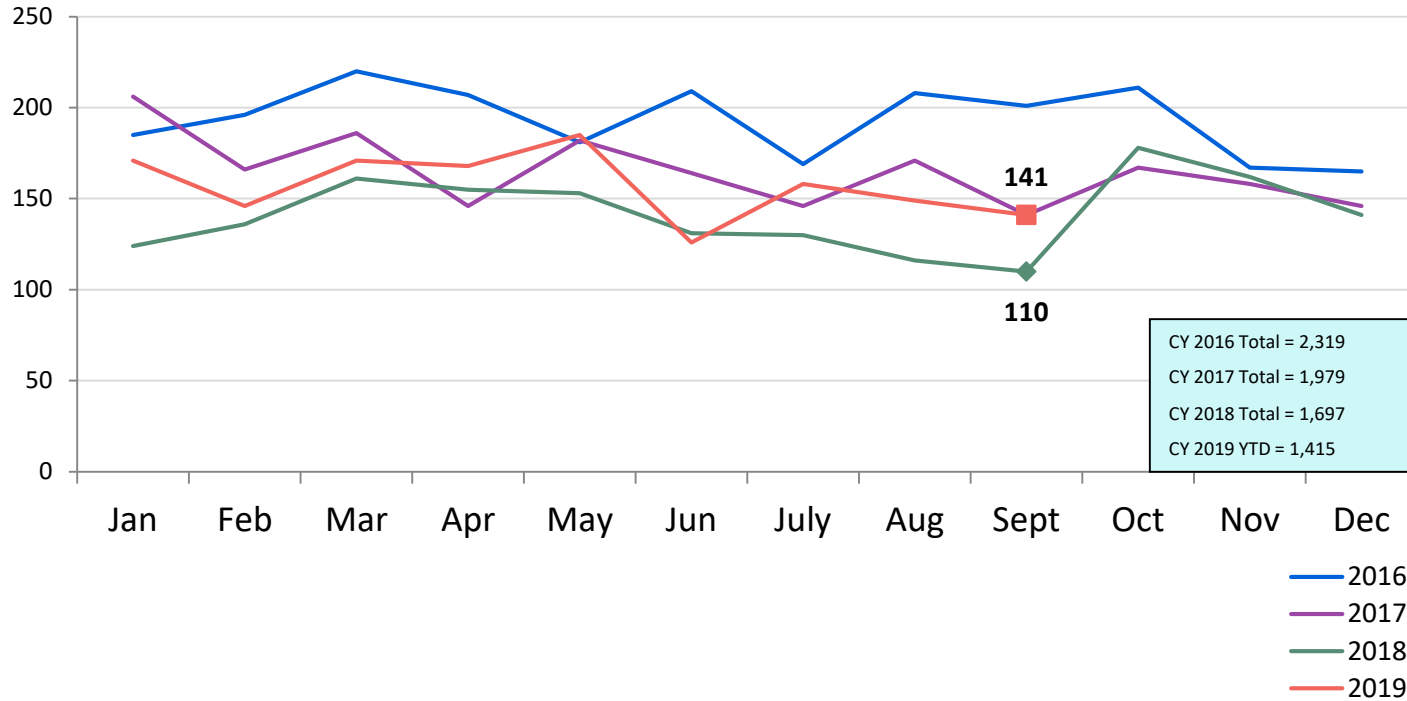
### Detention Total Monthly Average Daily Population by Case Type\* September 2018 – September 2019



Total Average Daily Population												
Sep 2018	Oct 2018	Nov 2018	Dec 2018	Jan 2019	Feb 2019	Mar 2019	Apr 2019	May 2019	Jun 2019	Jul 2019	Aug 2019	Sep 2019
60	141	140	143	150	139	139	135	127	140	150	157	152

\*Case Type definitions: Adolescent Offender (AO) is a person 16 years of age charged with a felony on or after 10/1/18 and a person 17 years of age charged with a felony on or after 10/1/19; Juvenile Delinquent (JD) is a person 7-15 years of age who has committed an act which would be considered a crime if the person were old enough and capable of being treated as an adult. Sixteen year olds charged with a misdemeanor (except those charged under NYS Vehicle and Traffic Law) on or after 10/1/18 and 17 year olds charged on or after 10/1/19 are also JDs.; Juvenile Offender (JO) a person 13-15 years of age with a serious violent felony charge; Pre-Raise the Age is a person who was 16 or 17 years old when transferred off Rikers Island 10/1/18 and 17 year olds charged with crimes 10/1/18- 9/30/19; and Other case type includes youth detained for other authorities and ACS warrants.

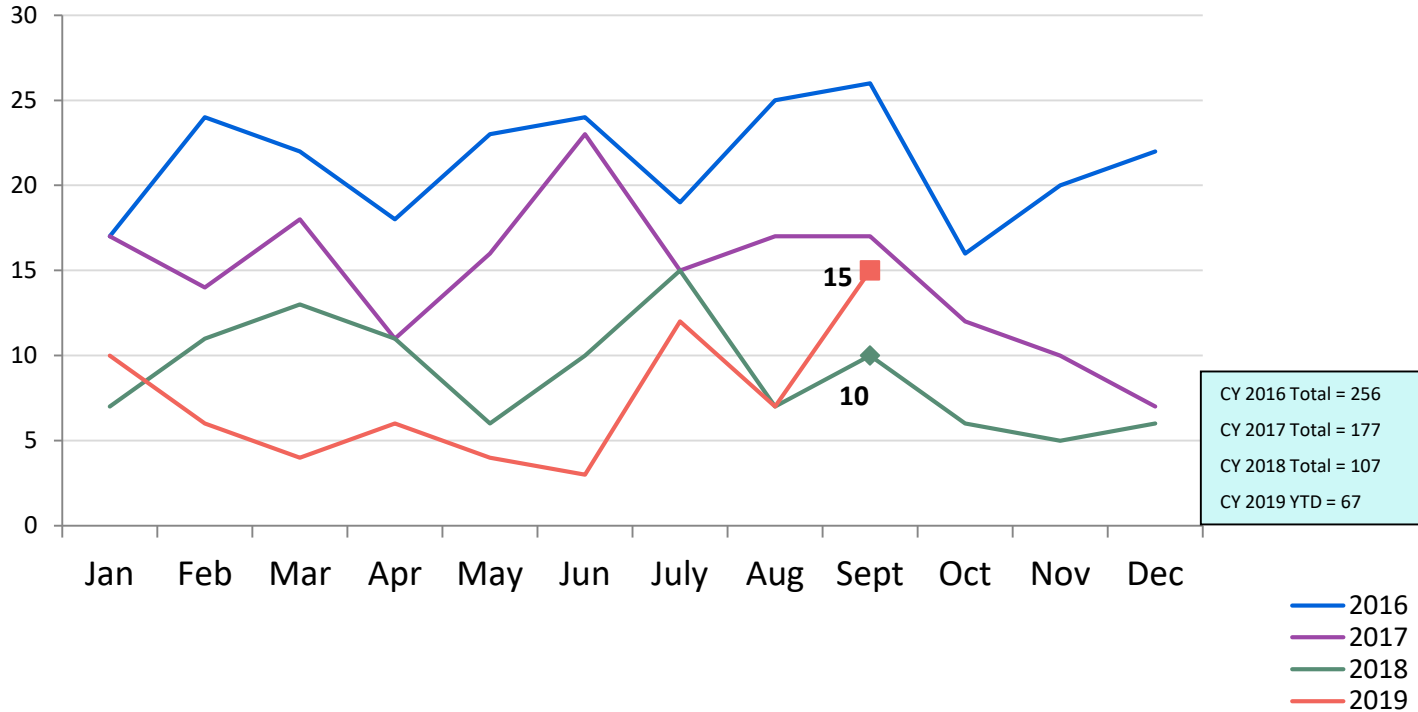
### Total Monthly Releases from Detention January 2016 – September 2019\*



CY 2016 Total = 2,319  
 CY 2017 Total = 1,979  
 CY 2018 Total = 1,697  
 CY 2019 YTD = 1,415

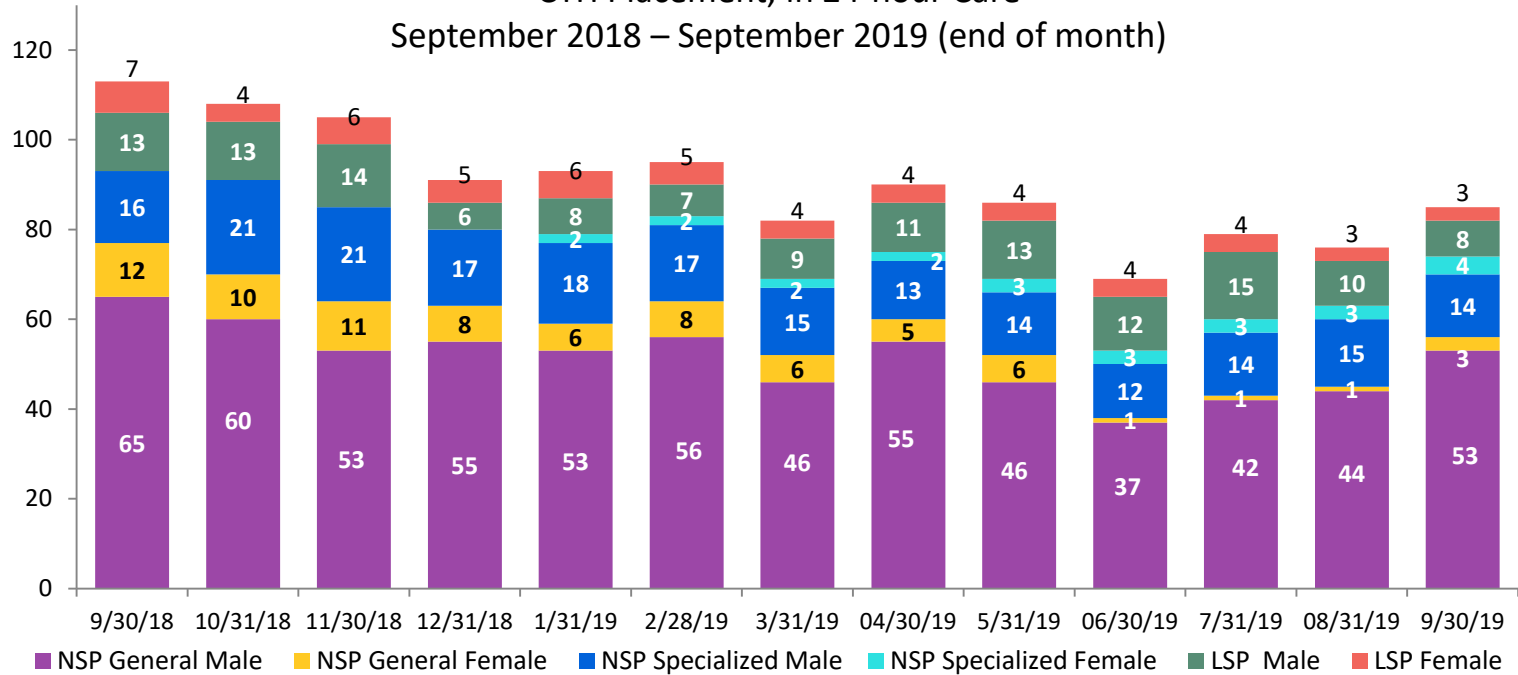
\*Beginning in October 2018 detention releases include releases from the Horizon Juvenile Facility of 16 and 17 year olds moved off Rikers Island and pre-Raise the Age 17 year olds.

Close to Home Admissions\*  
January 2016 – September 2019



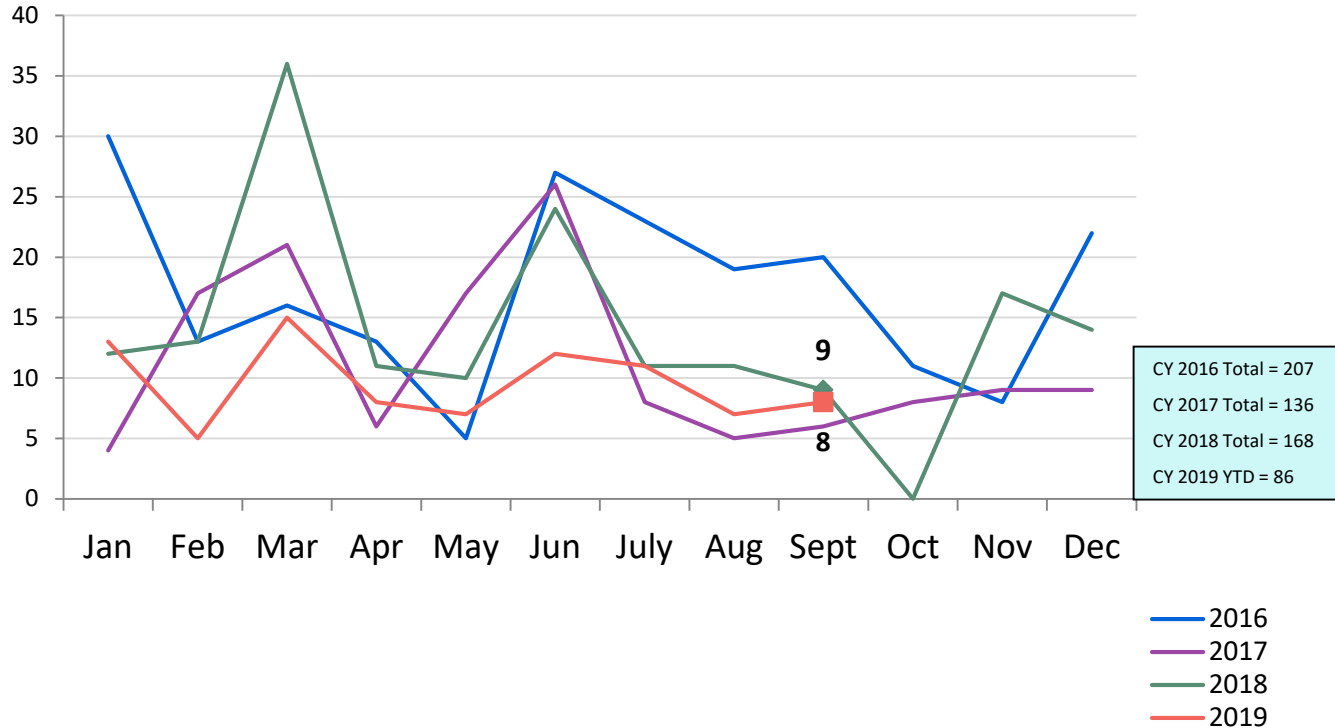


CTH Placement, in 24-hour Care  
September 2018 – September 2019 (end of month)



Number in Placement													
	9/30/18	10/31/18	11/30/18	12/31/18	1/31/19	2/28/19	3/31/19	4/30/19	5/31/19	6/30/19	7/31/19	8/31/19	9/30/19
NSP	93	91	85	80	79	83	69	75	69	53	60	63	74
LSP	20	17	20	11	14	12	13	15	17	16	19	13	11

### Releases from Close to Home Placement to Aftercare January 2016 – September 2019



## Appendix

Figure 1: SCR Intakes by Reporter Group, July 2018 – September 2018 and July 2019 – September 2019

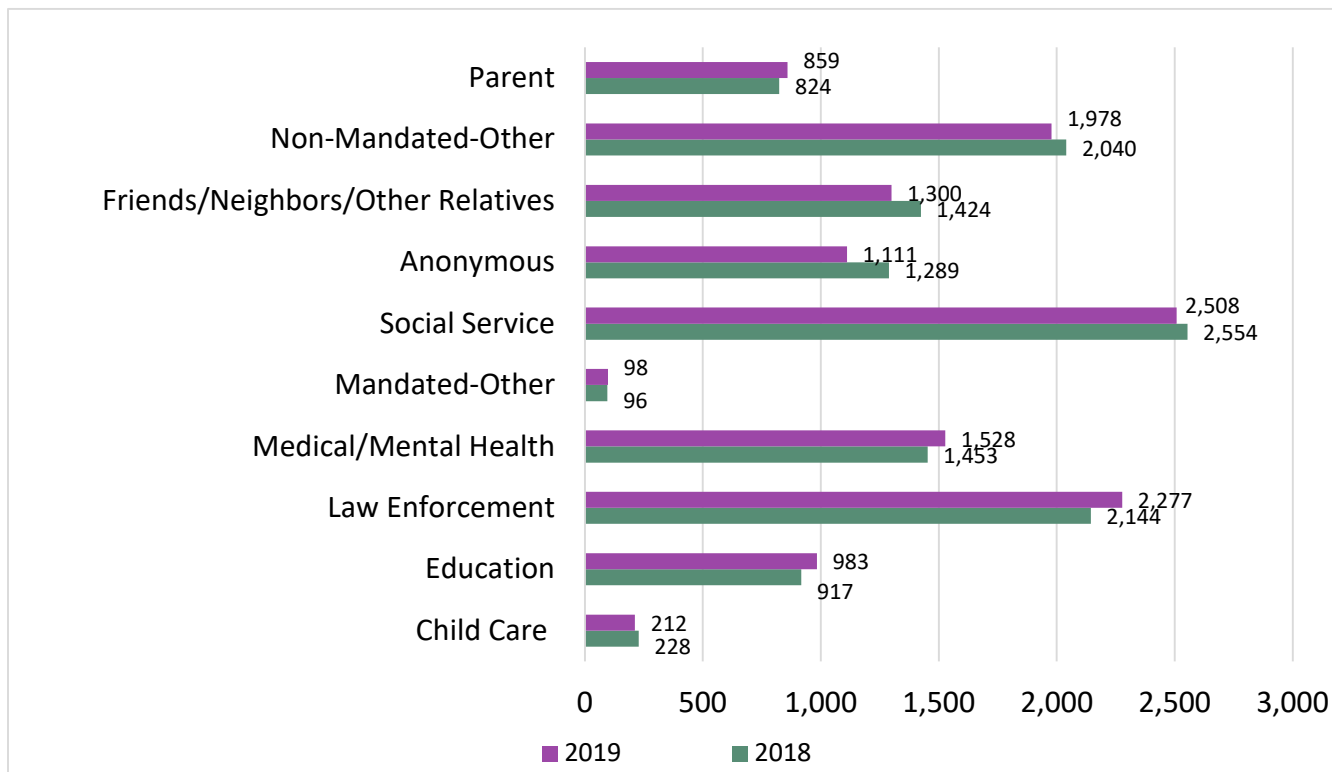
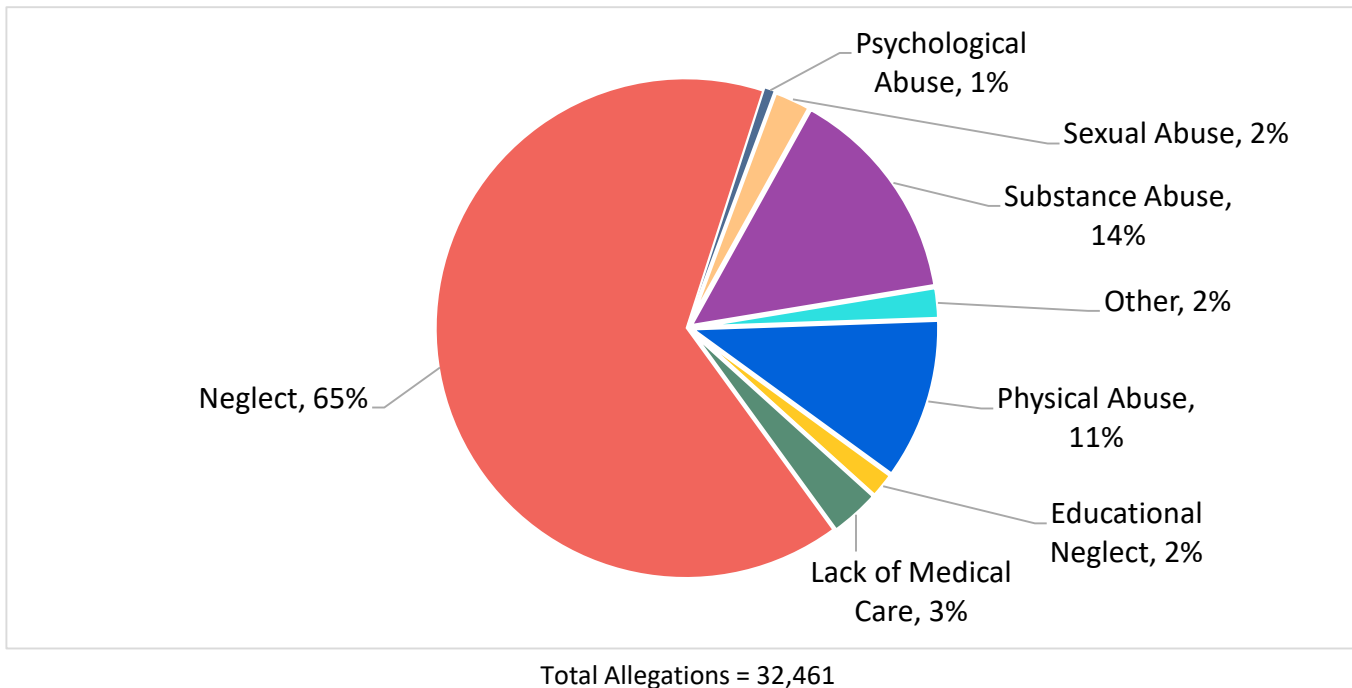


Figure 2: SCR Allegations  
July 2019 – September 2019



Allegations are grouped as follows: Physical Abuse - burn, fatality, fracture, choking, twisting, shaking, excessive corporal punishment, internal injuries, lacerations, bruises, welts, poisoning, noxious substances; Educational Neglect – educational neglect; Lack of Medical Care – lack of medical care; Neglect - inadequate guardianship, inadequate food, clothing, shelter, lack of supervision, malnutrition, failure to thrive, swelling, dislocations, sprains; Psychological Abuse - isolation, emotional neglect; Sexual Abuse – sexual abuse; Substance Abuse - parental drug use, child drug use; and Other -abandonment, inappropriate custodial conduct.

Figure 3: SCR Investigations by Borough  
July 2018 – September 2018 and July 2019 – September 2019

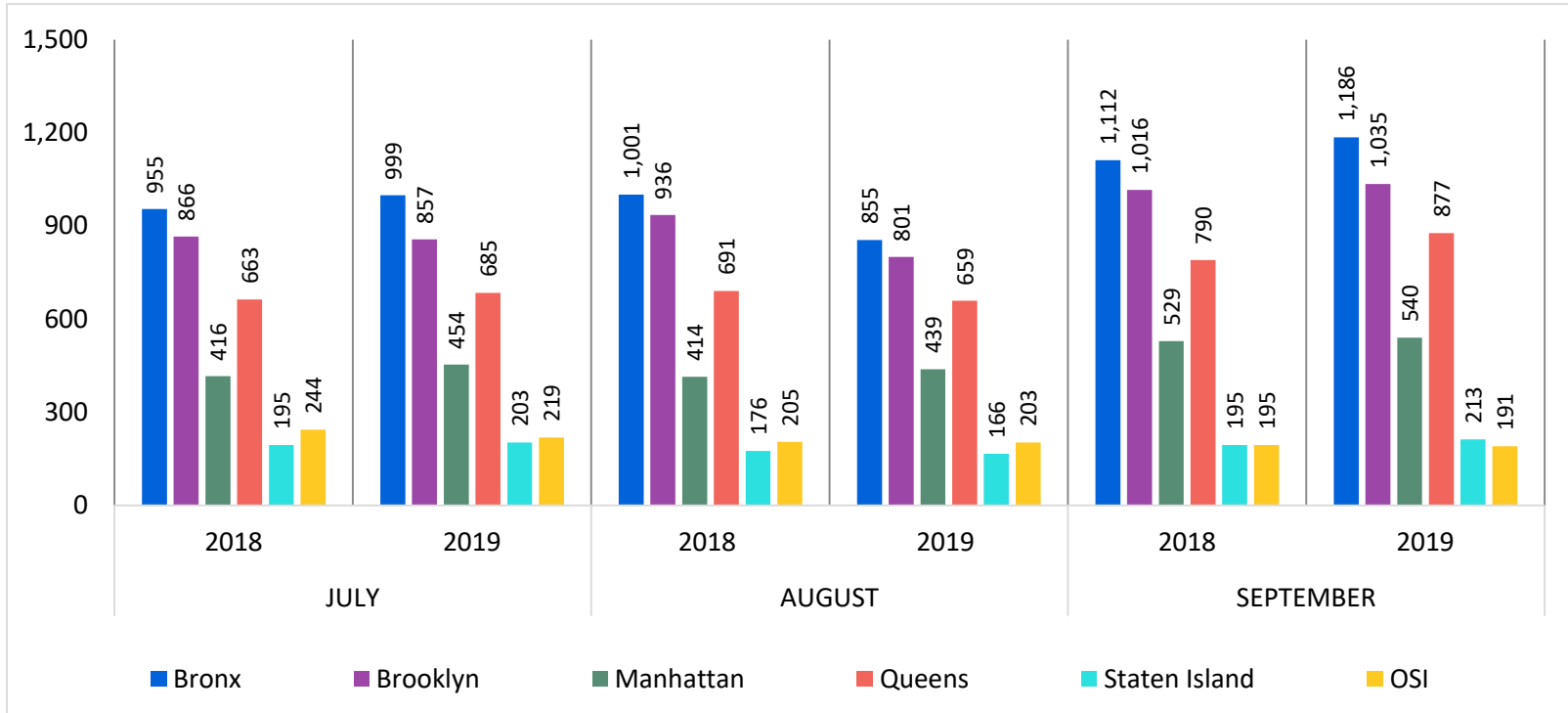


Table 1: SCR Investigations Changes by Borough  
 July 2018 – September 2018 and July 2019 – September 2019

Month	Year	Bronx	Brooklyn	Manhattan	Queens	Staten Island	OSI	Other	Total
July	2018	955	866	416	663	195	244	180	3,519
	2019	999	857	454	685	203	219	132	3,549
	% Change	4.6%	-1.0%	9.1%	3.3%	4.1%	-10.2%	-26.7%	0.9%
August	2018	1,001	936	414	691	176	205	157	3,580
	2019	855	801	439	659	166	203	127	3,250
	% Change	-14.6%	-14.4%	6.0%	-4.6%	-5.7%	-1.0%	-19.1%	-9.2%
September	2018	1,112	1,016	529	790	195	195	154	3,991
	2019	1,186	1,035	540	877	213	191	135	4,177
	% Change	6.7%	1.9%	2.1%	11.0%	9.2%	-2.1%	-12.3%	4.7%
Total	2018	3,068	2,818	1,359	2,144	566	644	491	11,090
	2019	3,040	2,693	1,433	2,221	582	613	394	10,976
	% Change	-0.9%	-4.4%	5.4%	3.6%	2.8%	-4.8%	-19.8%	-1.0%

**TABLE 2: Child Welfare Prevention Cases  
New and Closed  
January 2017 - September 2019**

Month	New Cases	Closed Cases
<b>2017</b>		
Jan-17	551	449
Feb-17	602	920
Mar-17	864	1,032
Apr-17	645	780
May-17	790	925
Jun-17	908	944
Jul-17	765	852
Aug-17	875	864
Sep-17	841	747
Oct-17	870	762
Nov-17	778	737
Dec-17	817	728
<b>2018</b>		
Jan-18	724	567
Feb-18	776	783
Mar-18	879	776
Apr-18	792	613
May-18	755	857
Jun-18	736	837
Jul-18	808	856
Aug-18	892	954
Sep-18	751	755
Oct-18	856	767
Nov-18	787	699
Dec-18	847	717
<b>2019</b>		
Jan-19	875	708
Feb-19	767	726
Mar-19	891	856
Apr-19	844	802
May-19	842	864
Jun-19	805	841
Jul-19	855	963
Aug-19	880	930
Sep-19	759	764

**Table 3: Referrals to Child Welfare Prevention Services by Source  
January 2017 - September 2019**

Year	Month	Total Referrals	DCP	Foster Care Agencies	PPRS Transfer	School	Self	Other Sources*
2017	Jan-17	1,046	78.5%	1.4%	6.7%	0.7%	3.1%	9.7%
	Feb-17	1,067	77.7%	0.8%	6.7%	0.8%	3.8%	10.1%
	Mar-17	1,383	79.1%	0.6%	6.9%	0.9%	4.0%	8.5%
	Apr-17	1,116	81.2%	1.0%	5.9%	1.1%	1.4%	9.4%
	May-17	1,335	81.9%	0.9%	5.5%	1.3%	2.8%	7.6%
	Jun-17	1,449	82.3%	0.8%	5.9%	1.2%	2.9%	6.9%
	Jul-17	1,273	83.3%	0.9%	7.9%	0.7%	1.9%	5.3%
	Aug-17	1,429	82.7%	0.6%	9.3%	0.3%	1.7%	5.2%
	Sep-17	1,383	79.6%	1.6%	7.7%	0.8%	2.8%	7.4%
	Oct-17	1,489	77.5%	1.5%	7.5%	1.0%	3.1%	9.4%
	Nov-17	1,235	75.1%	1.5%	8.8%	2.2%	3.6%	8.8%
	Dec-17	1,227	70.5%	1.6%	10.2%	2.4%	3.7%	11.5%
2018	Jan-18	1,399	74.5%	1.5%	10.7%	1.4%	2.9%	9.0%
	Feb-18	1,302	76.8%	1.5%	7.5%	1.3%	3.5%	9.4%
	Mar-18	1,396	79.7%	1.5%	7.4%	1.2%	2.6%	7.5%
	Apr-18	1,383	80.0%	1.2%	5.9%	1.1%	3.1%	8.7%
	May-18	1,189	78.8%	1.3%	7.0%	1.0%	3.3%	8.7%
	Jun-18	1,284	81.9%	0.5%	7.6%	0.9%	3.2%	6.0%
	Jul-18	1,403	82.5%	0.7%	8.3%	0.6%	2.4%	5.5%
	Aug-18	1,391	82.1%	1.7%	6.8%	0.4%	2.7%	6.3%
	Sep-18	1,135	84.4%	1.5%	7.0%	0.9%	4.1%	2.1%
	Oct-18	1,345	78.4%	1.5%	8.0%	1.2%	3.9%	7.0%
	Nov-18	1,107	73.8%	1.4%	9.5%	1.5%	4.3%	9.5%
	Dec-18	1,179	68.7%	1.7%	10.9%	2.7%	5.1%	10.9%
2019	Jan-19	1,373	74.3%	1.7%	8.4%	1.6%	3.8%	10.3%
	Feb-19	1,096	77.5%	0.9%	7.9%	2.2%	2.8%	8.7%
	Mar-19	1,292	72.4%	1.2%	10.4%	1.5%	4.4%	10.1%
	Apr-19	1,299	76.9%	1.5%	7.5%	2.8%	3.8%	7.4%
	May-19	1,312	80.0%	1.1%	7.9%	1.8%	3.2%	6.1%
	Jun-19	1,169	82.5%	1.4%	7.4%	0.7%	2.7%	5.3%
	Jul-19	1,322	81.3%	0.9%	7.1%	0.8%	4.5%	5.4%
	Aug-19	1,238	77.5%	1.9%	7.4%	0.7%	5.7%	6.6%
	Sep-19	1,157	78.9%	1.3%	10.5%	0.6%	2.9%	5.8%

Note: Data includes all referrals – accepted and rejected

\*Other Community Sources includes the Department of Homeless Services, Family Court, FAP, Hospitals and Medical facilities, the NYC Housing Authority, Probation, and Sponsor Agencies.