

s be Loving, hopeful and Optimistic. And change the World -Jack Layton 1950-2011

FLASH

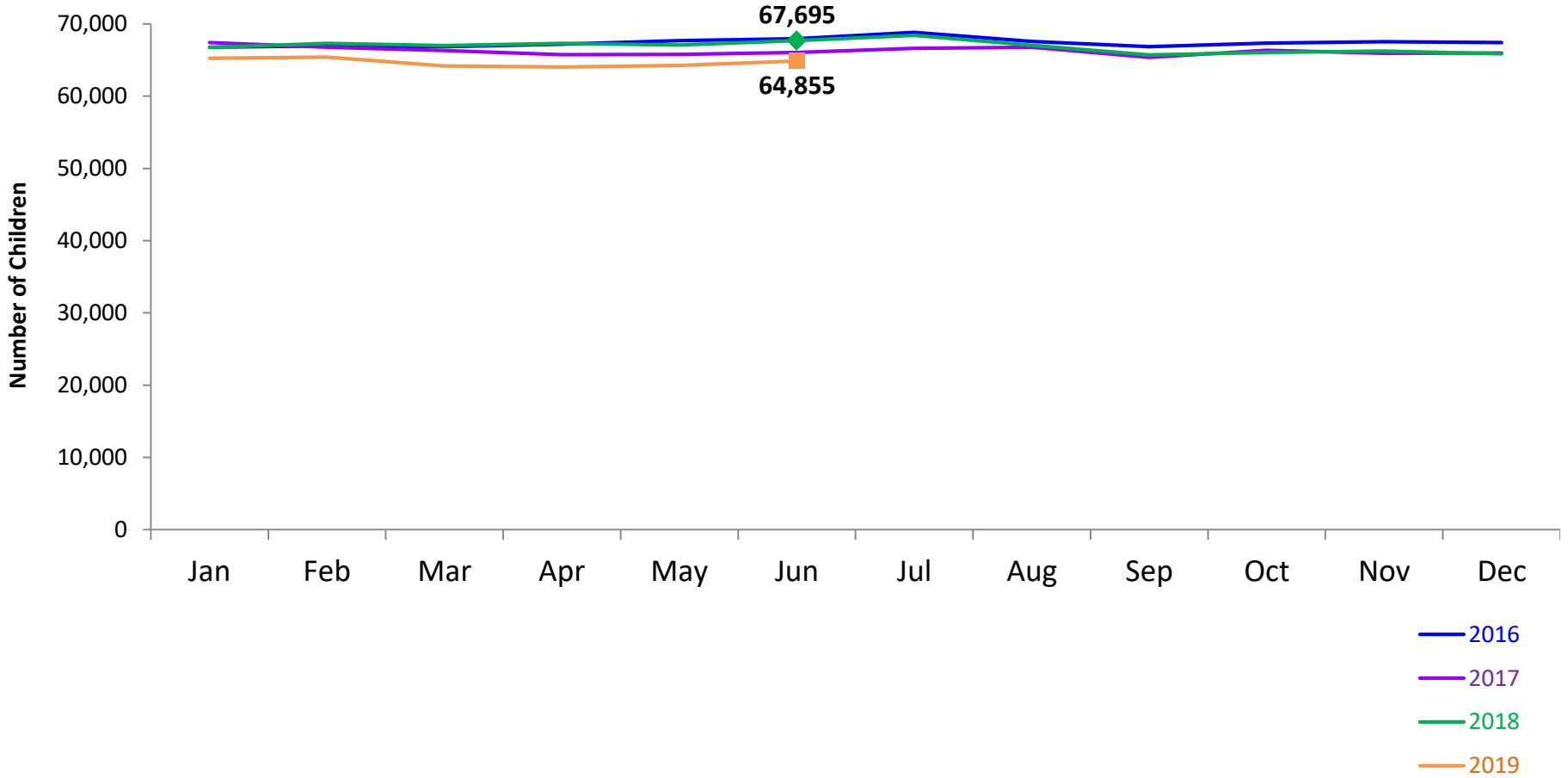
monthly indicator

REPORT

July 2019

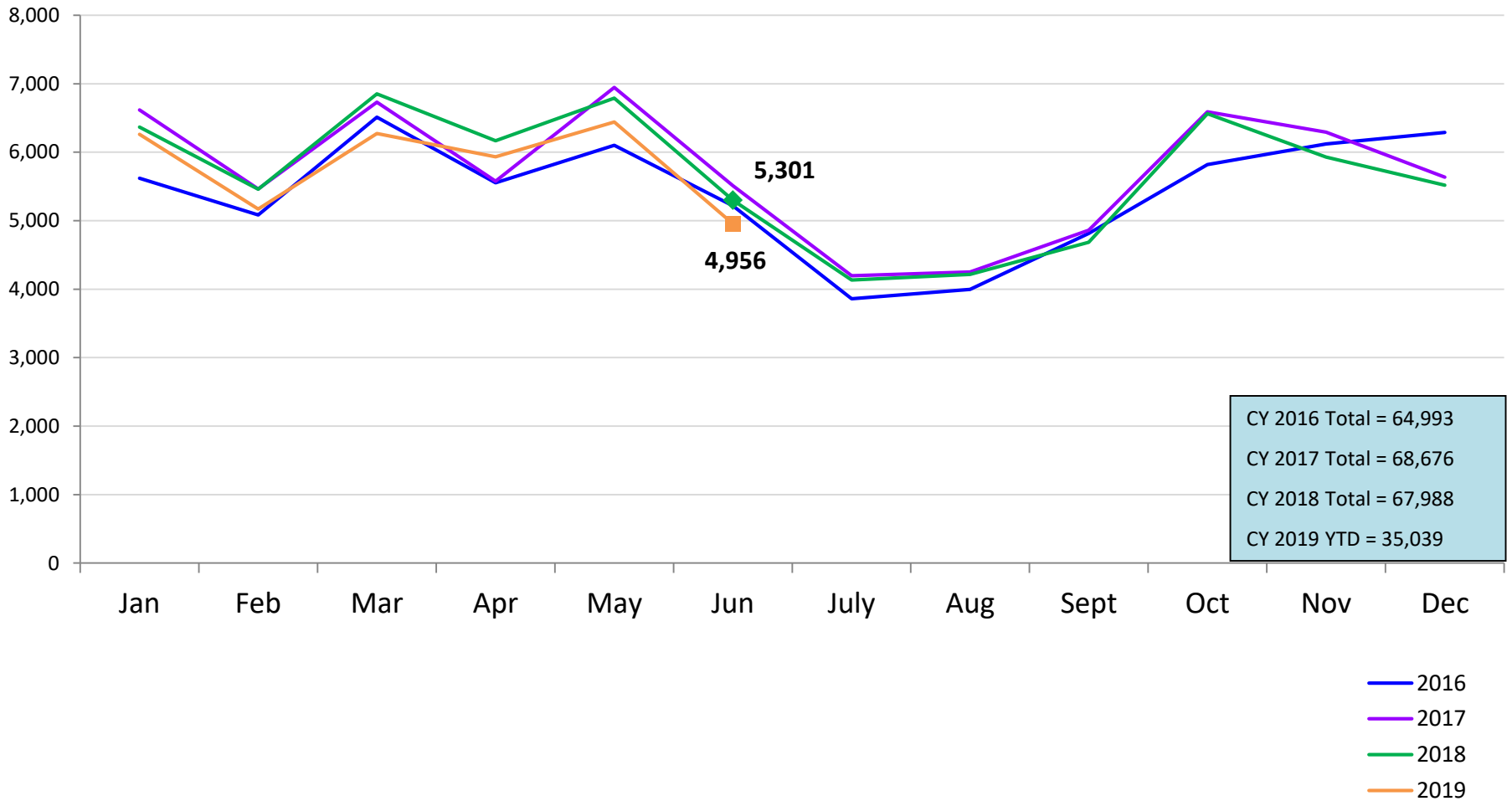
Children Using Vouchers for Child Care

January 2016 – June 2019 (End of Month)



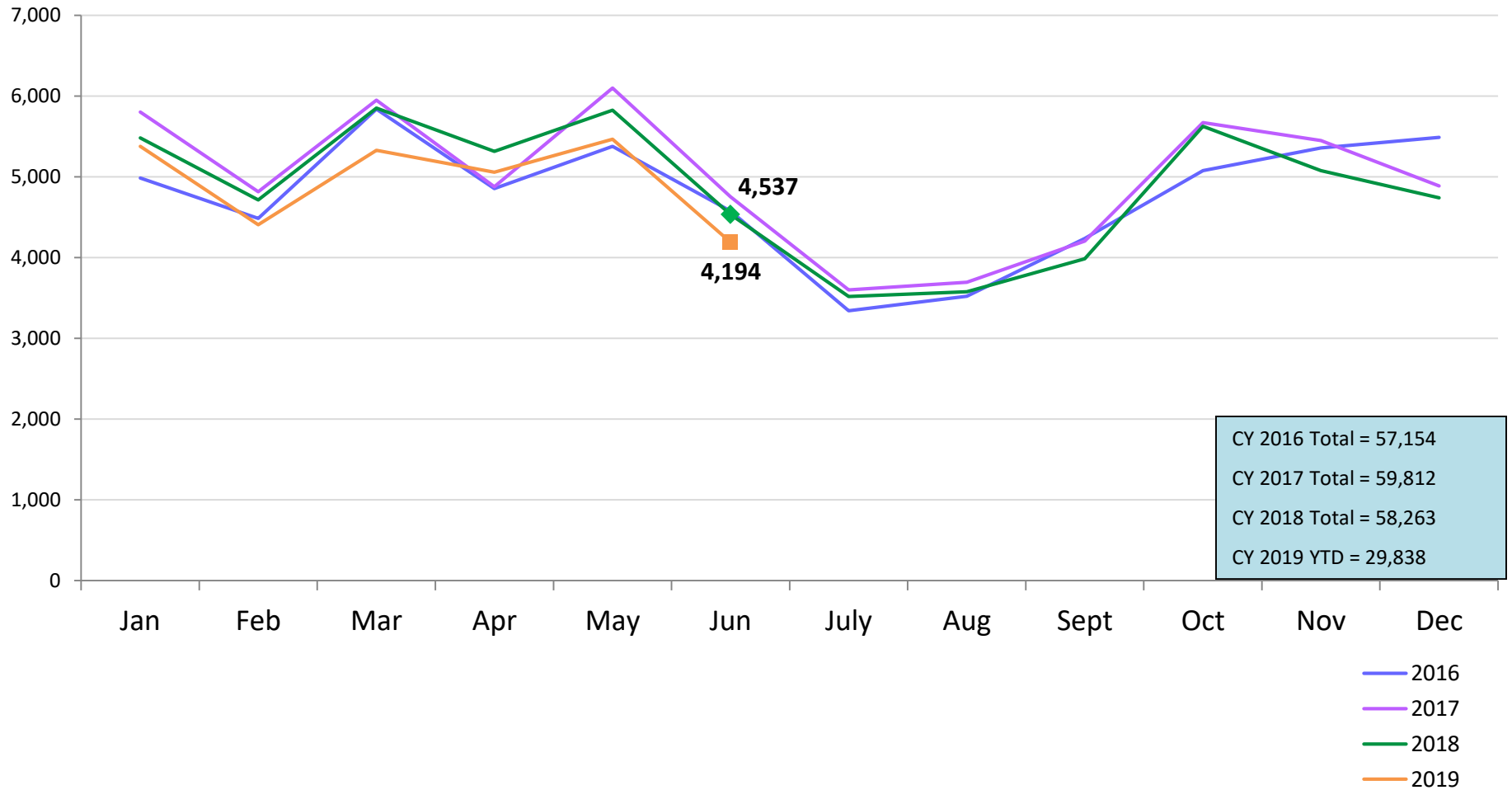
SCR Intakes

January 2016 – June 2019



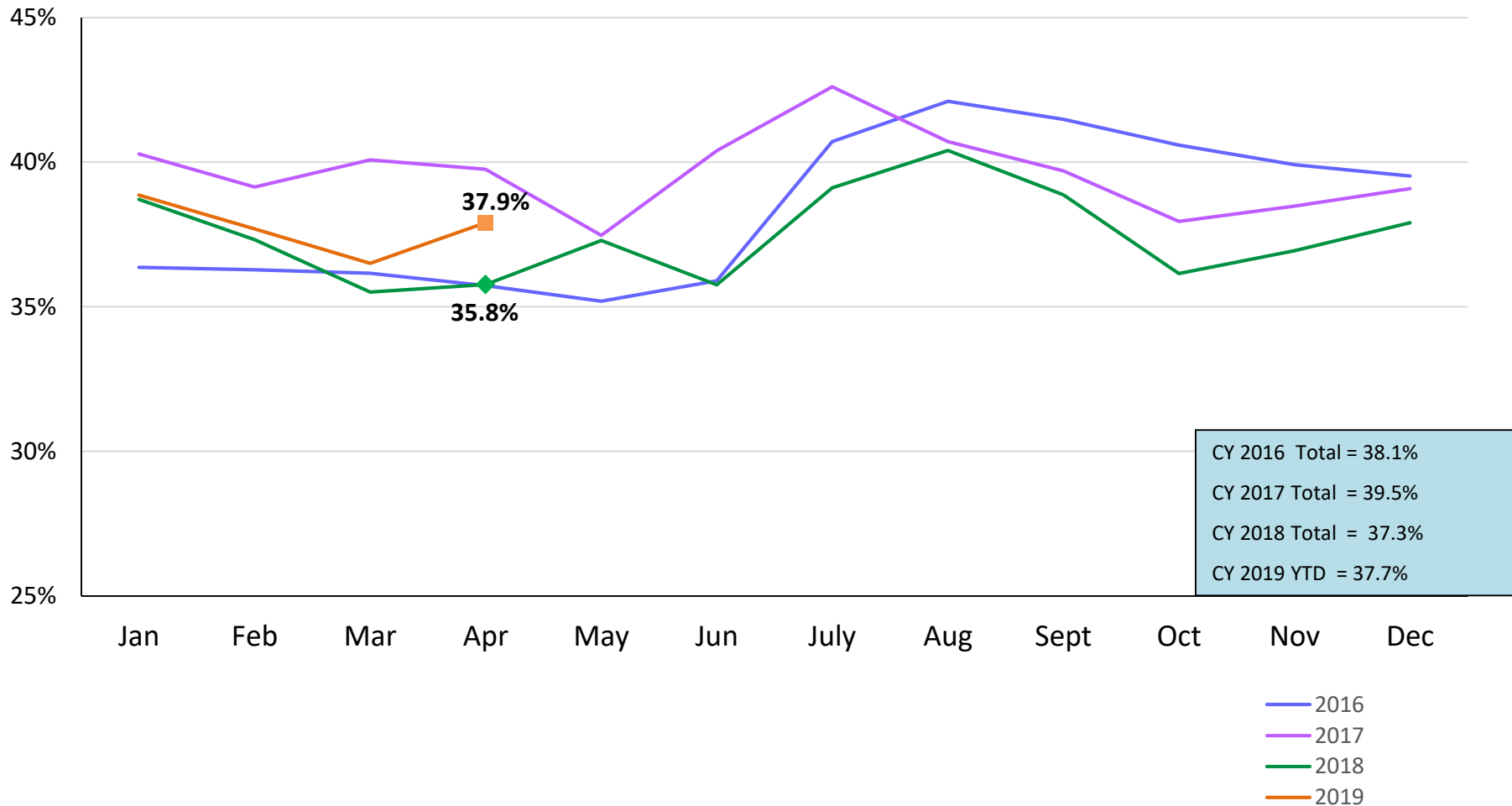
SCR Consolidated Investigations

January 2016 – June 2019



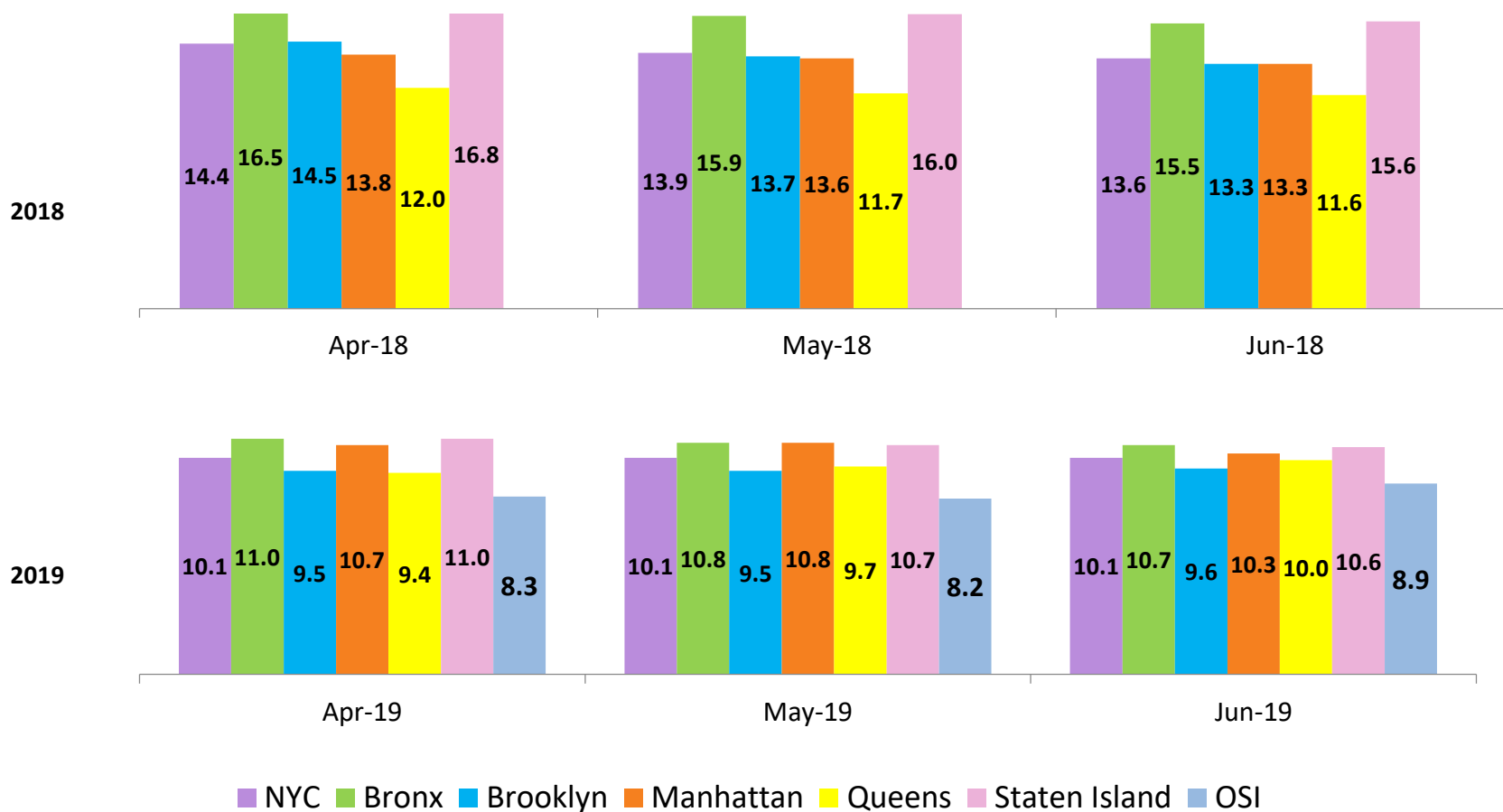
Percent of Investigations that Found Some Credible Evidence of Abuse or Neglect

January 2016 – April 2019



Average Child Protection Caseload*

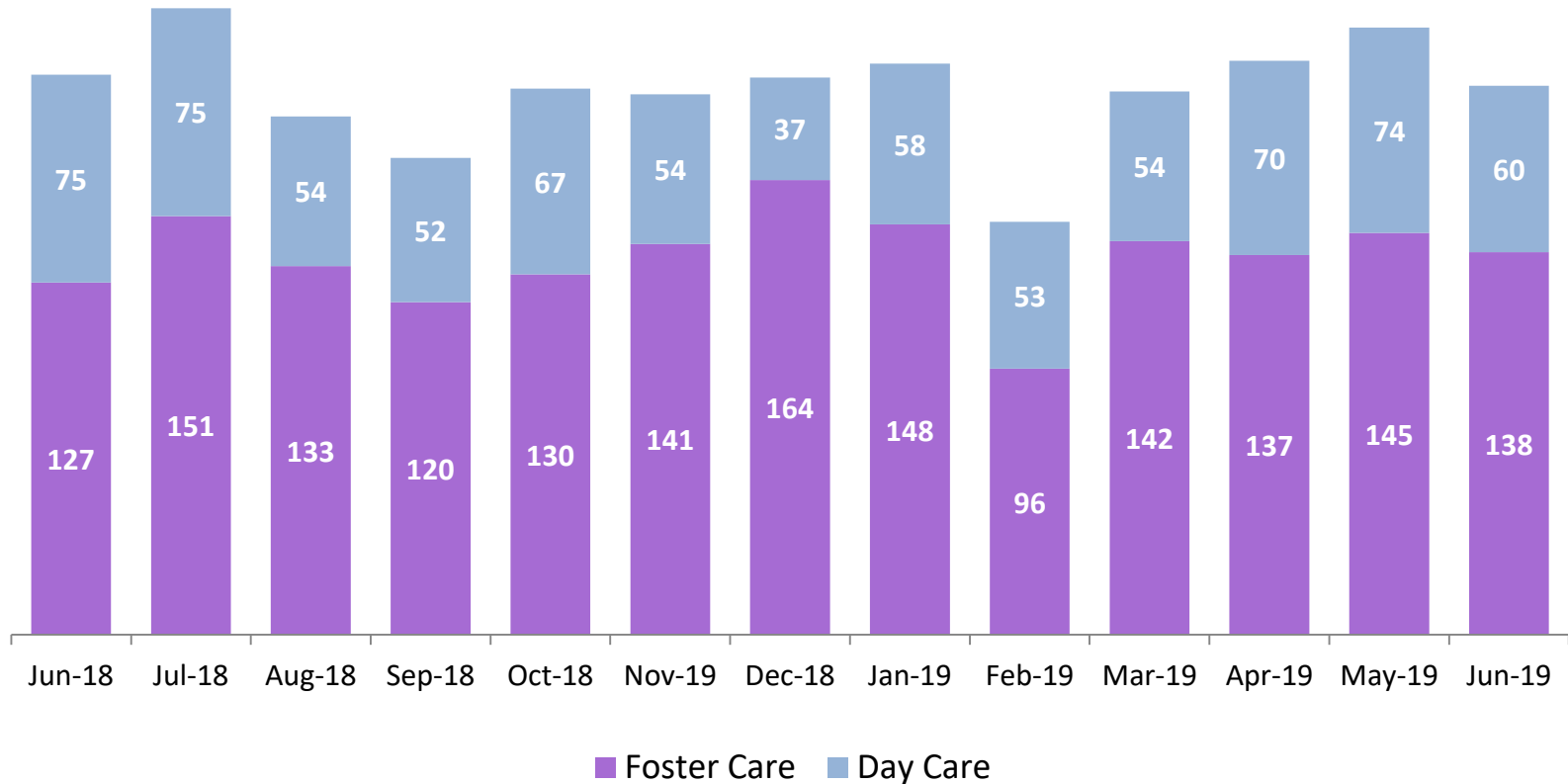
April 2018 – June 2018 and April 2019 – June 2019



*Prior to December 2018 caseloads are of Protective/Diagnostic Unit (Child Protection, School Based, Sex Abuse and Hospital Units) caseworkers only. Beginning December 2018, all caseload carrying Child Protection Specialists (CPS) in investigative and Family Assessment Response Units are included. Includes CPS in Primary and Case Manager roles only.

OSI Foster Care and Day Care* Investigations

June 2018 – June 2019

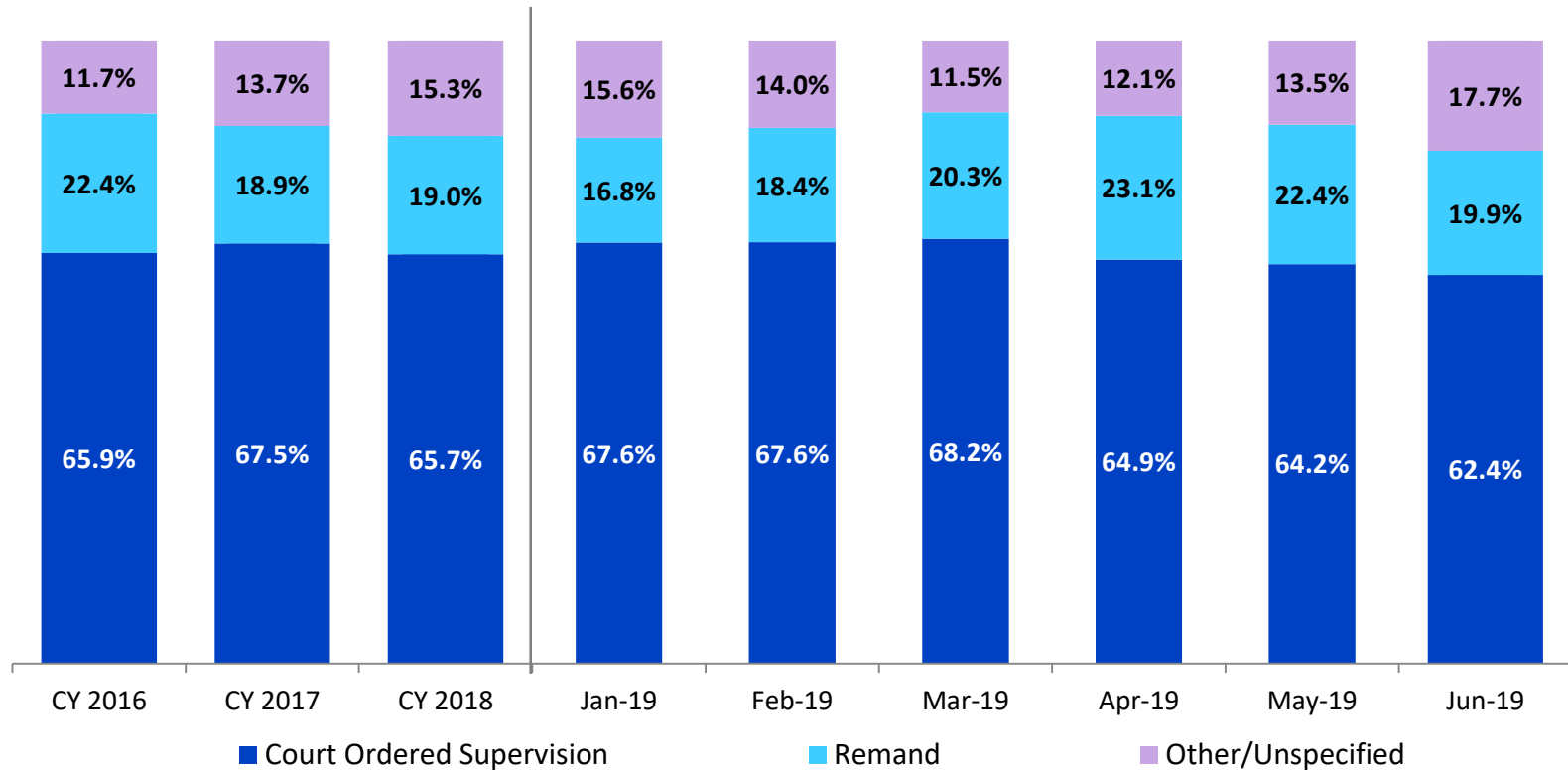


	Jun 2018	Jul 2018	Aug 2018	Sep 2018	Oct 2018	Nov 2018	Dec 2018	Jan 2019	Feb 2019	Mar 2019	Apr 2019	May 2019	Jun 2019
Number of Investigations	202	226	187	172	197	195	201	206	149	196	207	219	198

*Day Care investigations include alleged abuse or maltreatment of children perpetrated by someone who cares for children in a setting that is not the child’s familial home and that requires state or local government approval and is subject to state laws, regulations, and oversight. This includes, but is not limited to, ACS Early Care and 7 Education programs.

Article 10 Filings and Initial Hearing Outcomes, Children

CY 2016 – June 2019

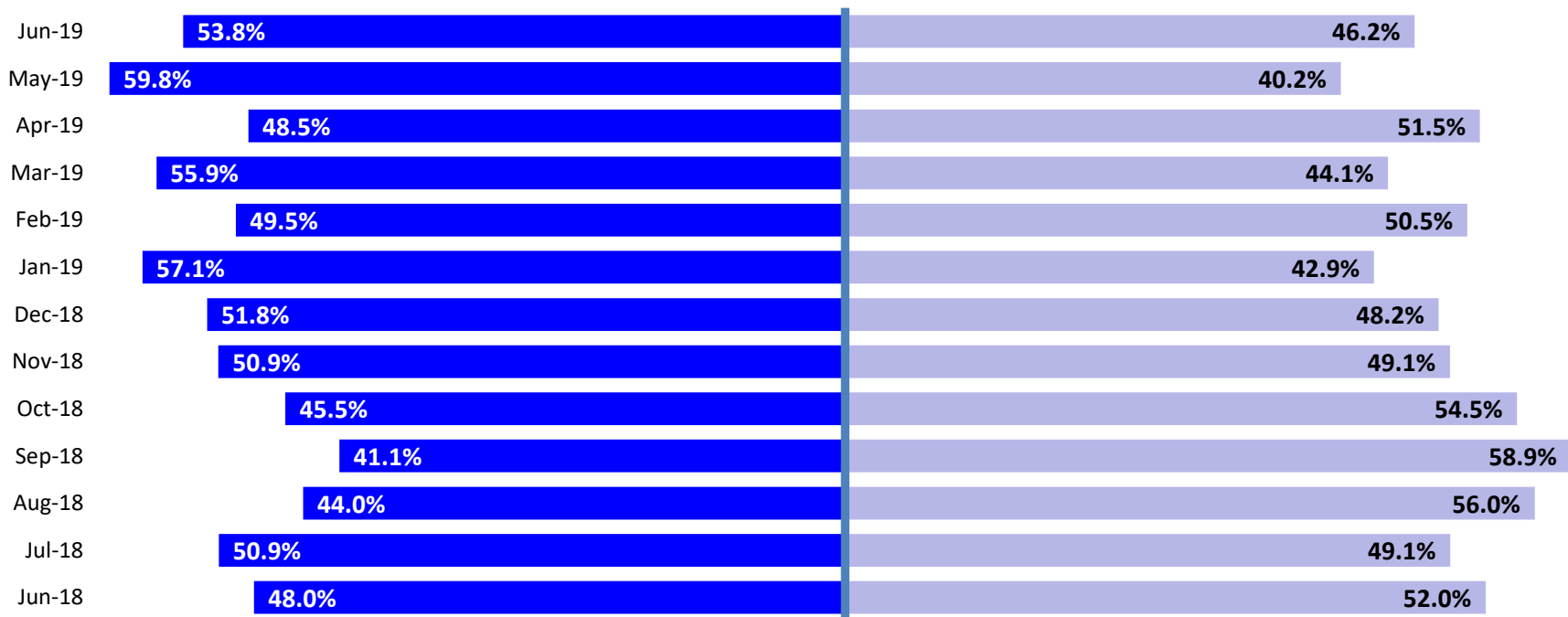


	CY 2016	CY 2017	CY 2018	Jan 2019	Feb 2019	Mar 2019	Apr 2019	May 2019	June 2019
Children with Article 10 Filings	10,973	15,975	13,319	1,092	1,056	1,040	1,127	1,078	1,000

Note: The category “Other/Unspecified” includes released with no supervision, no order issued and no outcome specified.

Remands Approved at Initial Article 10 Hearing by Removal Status

June 2018 – June 2019

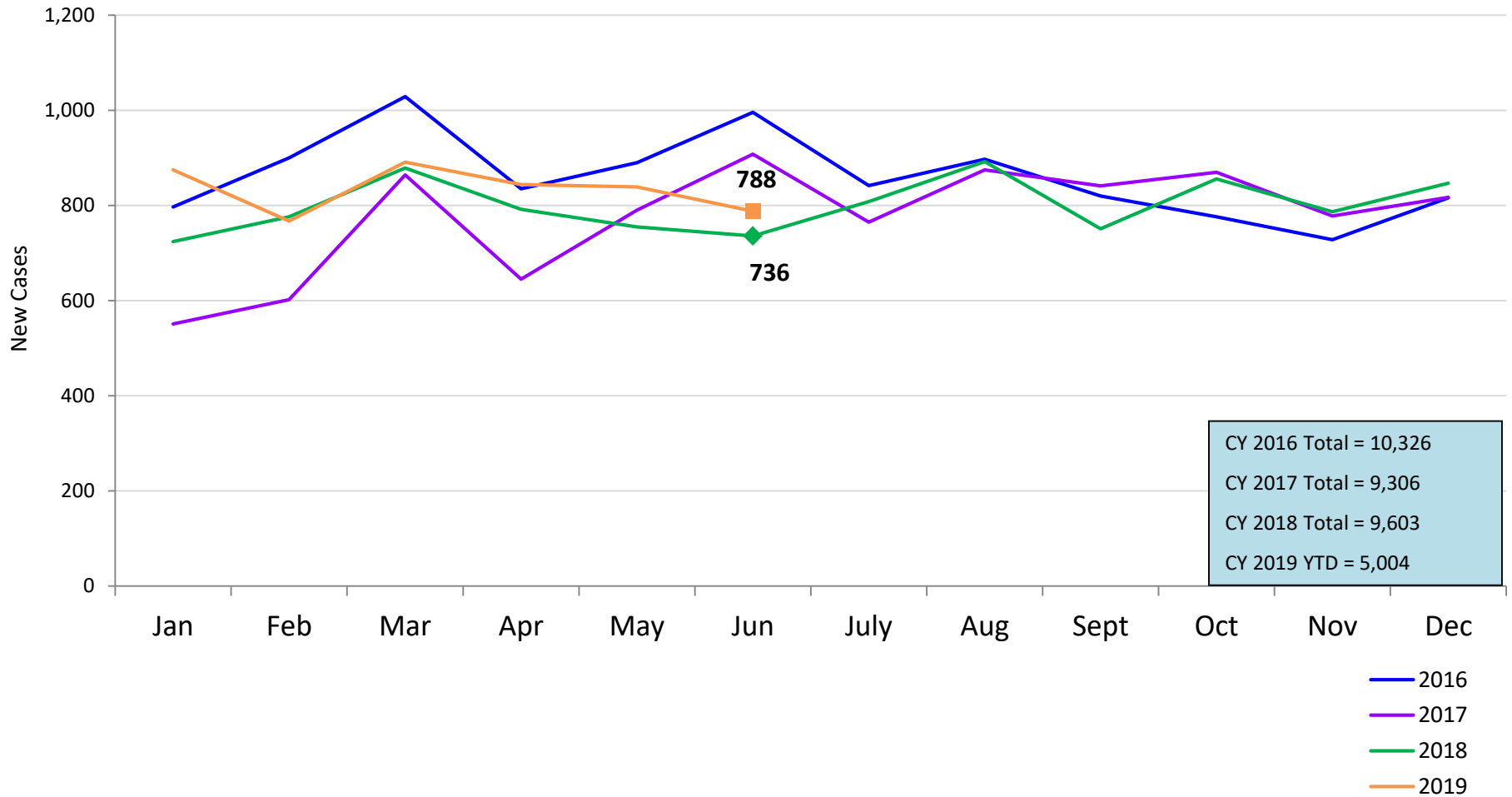


■ Pre-Filing Emergency Removals (court approved at initial hearing) ■ Post-Filing Removals (court ordered at initial hearing)

	Jun 2018	Jul 2018	Aug 2018	Sep 2018	Oct 2018	Nov 2018	Dec 2018	Jan 2019	Feb 2019	Mar 2019	Apr 2019	May 2019	Jun 2019
Children Remanded	200	173	259	151	297	167	193	184	194	211	260	241	199

New Child Welfare Prevention Cases*

January 2016 – June 2019

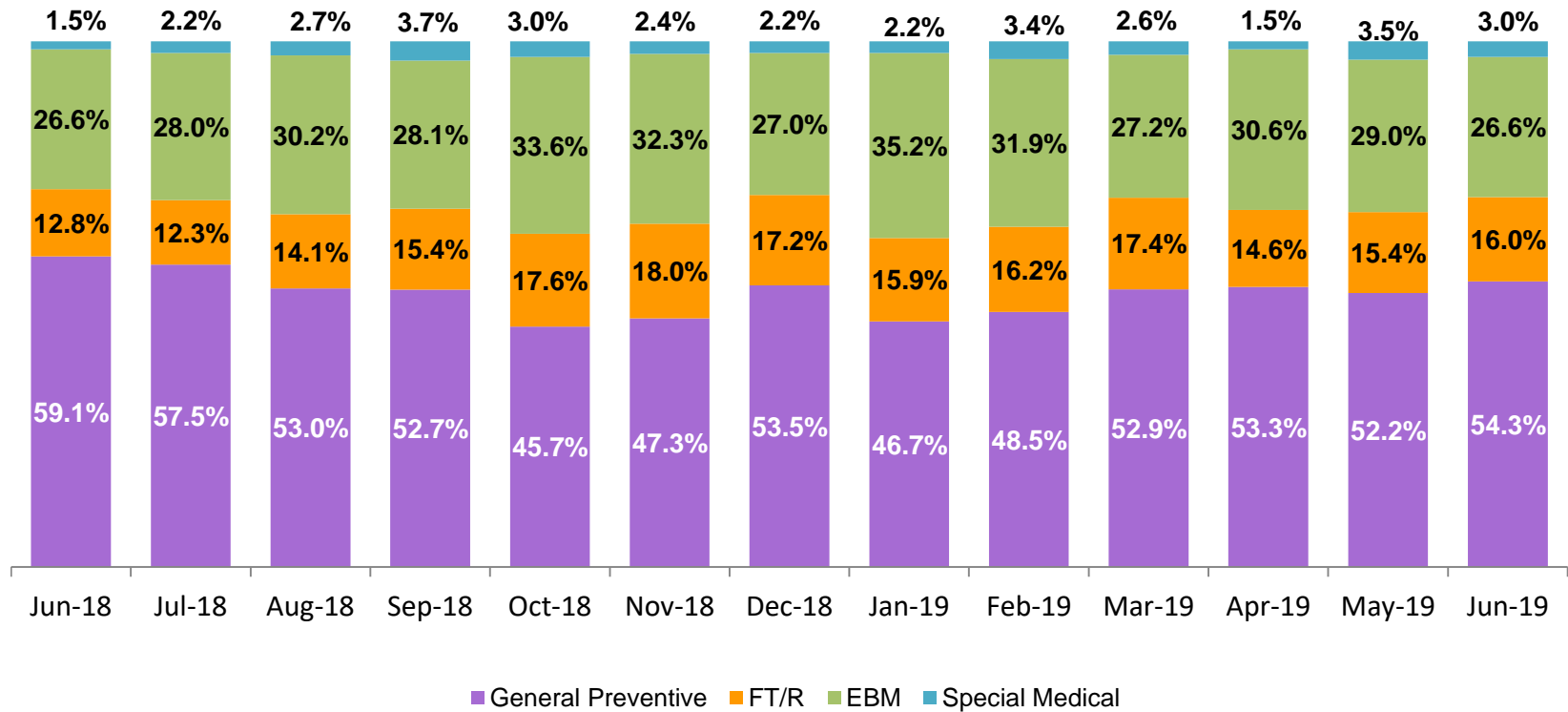


*New prevention cases do not include cases transferred from one preventive program to another.

See Pages 30 and 31 of the Appendix for supporting data.

New Child Welfare Prevention Cases by Program Type *

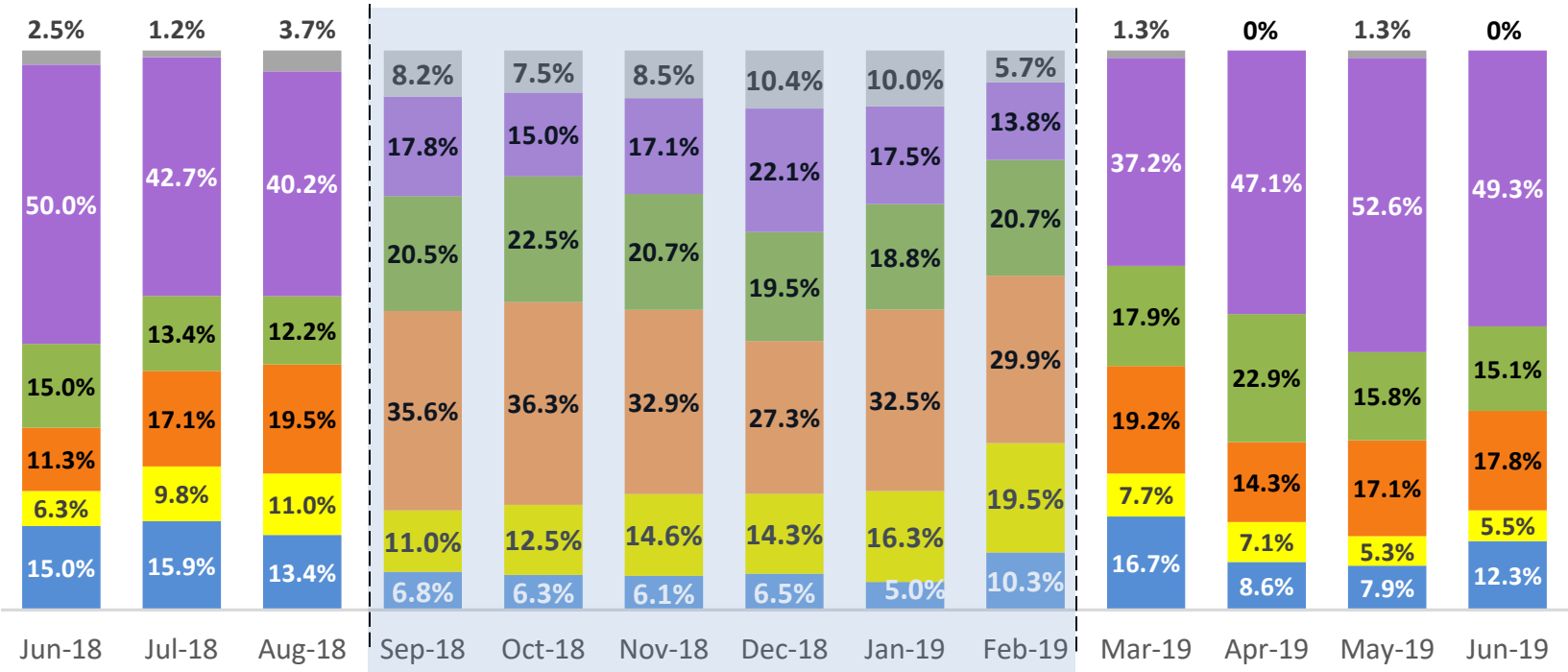
June 2018 – June 2019



	Jun 2018	Jul 2018	Aug 2018	Sep 2018	Oct 2018	Nov 2018	Dec 2018	Jan 2019	Feb 2019	Mar 2019	Apr 2019	May 2019	Jun 2019
Number of New Preventive Cases	736	808	892	751	856	787	847	875	767	891	844	839	788

* New prevention cases do not include cases transferred from one prevention program to another.

Average Daily Children’s Center Population June 2018 – June 2019



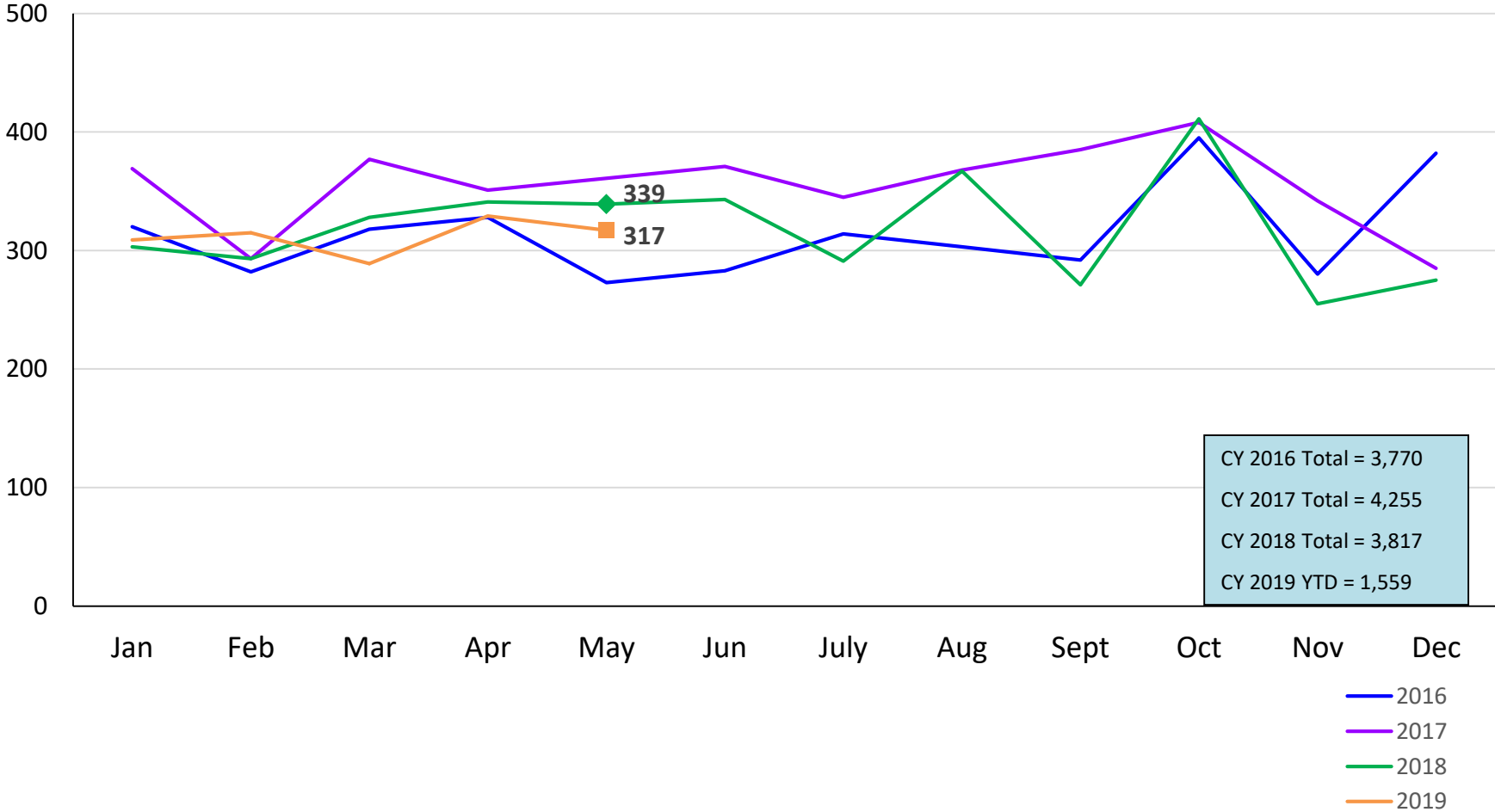
- Newborn - 3 years old
- 4-6 years old
- 7-10 years old
- 11-13 years old
- 14-18 years old
- 19+ years old
- Newborn - 1 year old
- 2-6 years old
- 7-12 years old
- 13-15 years old
- 16-17 years old
- 18+ years old

	Jun 2018	Jul 2018	Aug 2018*	Sep 2018	Oct 2018	Nov 2018	Dec 2018	Jan 2019	Feb 2019	Mar 2019	Apr 2019	May 2019	Jun 2019
Average Number of Children	80	82	82	73	80	82	77	80	87	78	70	76	73

Notes: 1) August 2018 includes data from August 1st to August 28th. 2) Different age groups were used from September 2018 to February 2019.

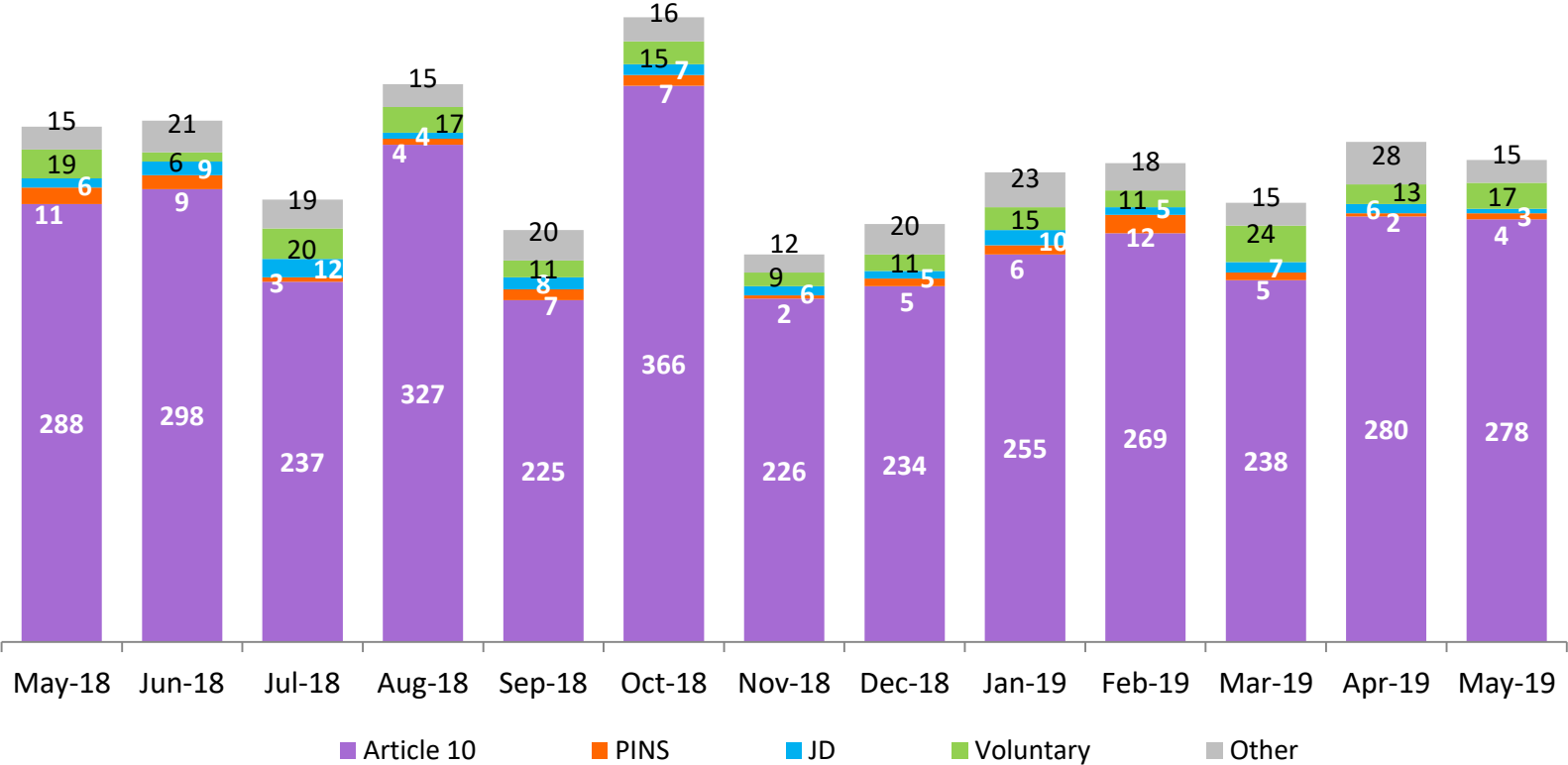
New Placements of Children into Foster Care

January 2016 – May 2019



Reason for New Placements of Children into Foster Care

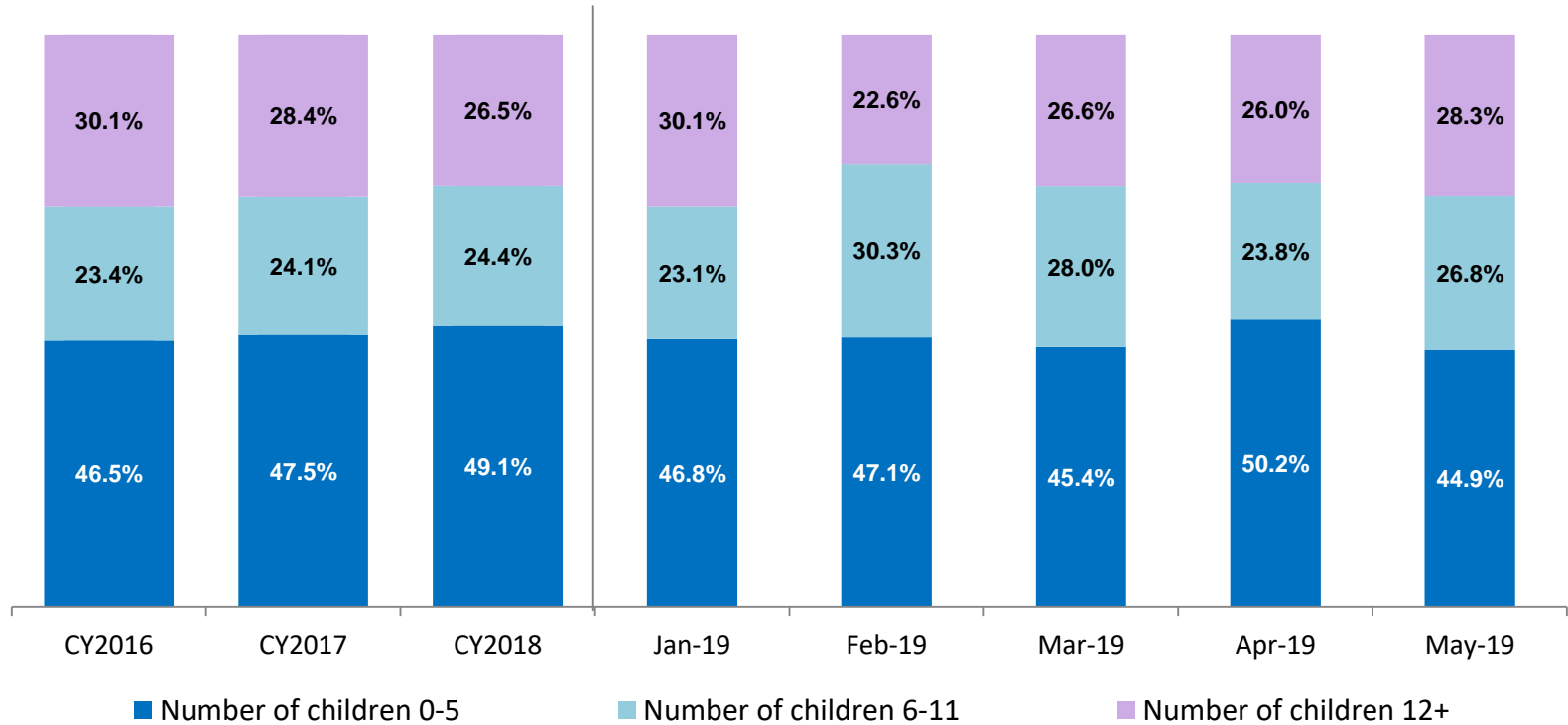
May 2018 – May 2019



	May 2018	Jun 2018	Jul 2018	Aug 2018	Sep 2018	Oct 2018	Nov 2018	Dec 2018	Jan 2019	Feb 2019	Mar 2019	Apr 2019	May 2019
Number of Placements	339	343	291	367	271	411	255	275	309	315	289	329	317

New Placements of Children into Foster Care* by Age

CY 2016 - May 2019

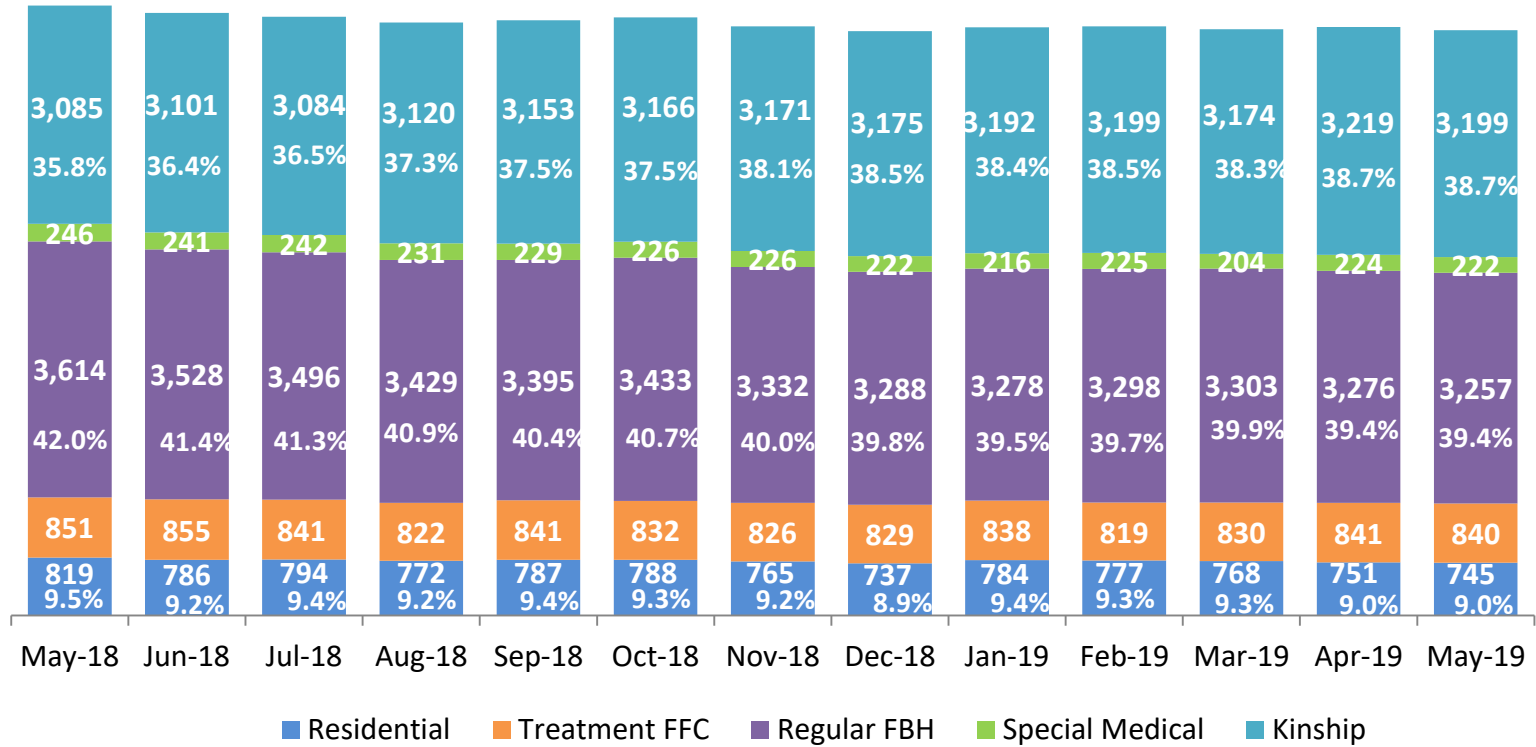


	CY 2016	CY 2017	CY 2018	Jan 2019	Feb 2019	Mar 2019	Apr 2019	May 2019
Number of Placements	3,557	4,097	3,724	299	310	282	323	314

*Excludes CTH placements.

Children in Foster Care *

May 2018 – May 2019 (end of month)

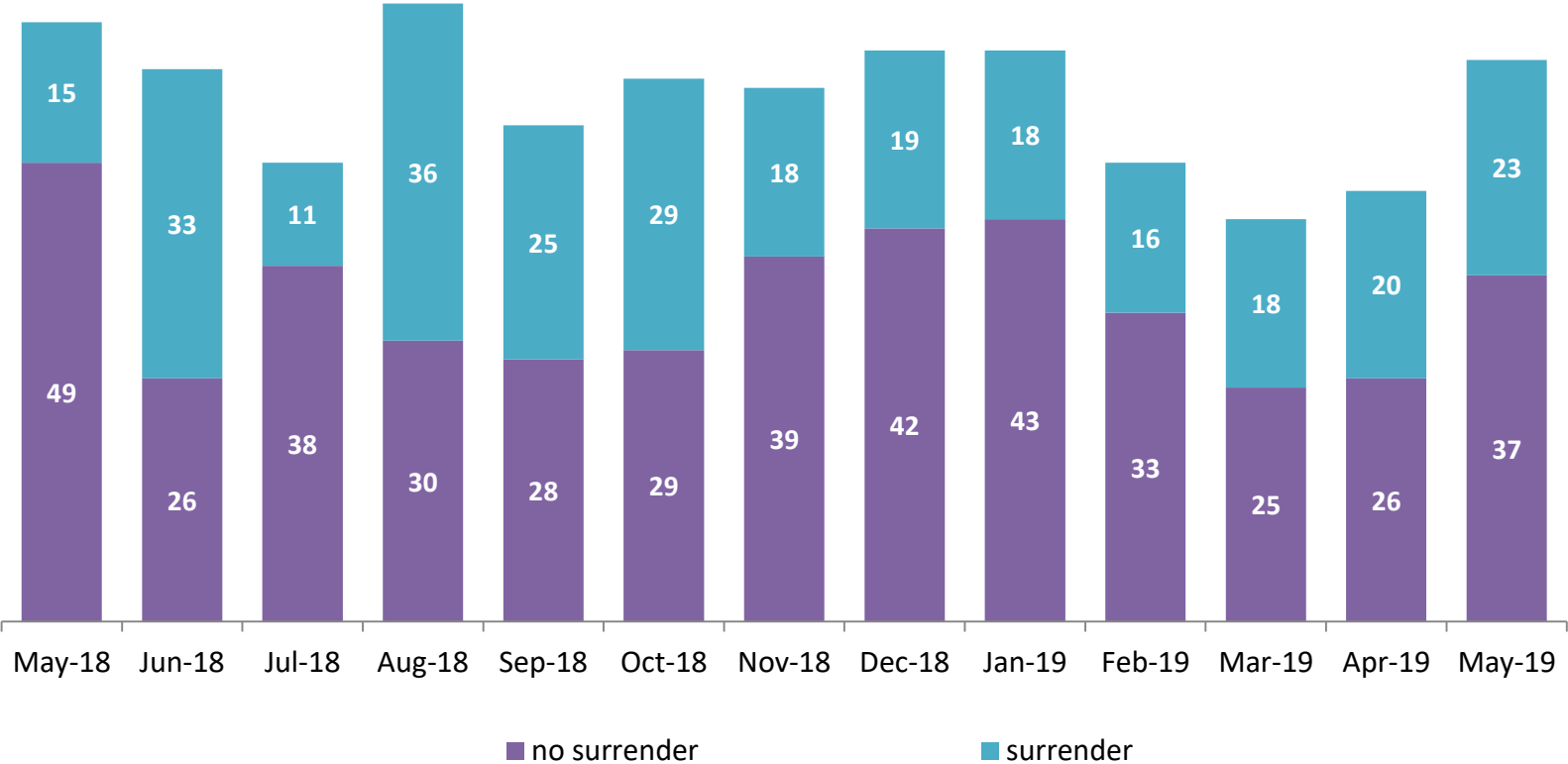


	May 2018	Jun 2018	Jul 2018	Aug 2018	Sep 2018	Oct 2018	Nov 2018	Dec 2018	Jan 2019	Feb 2019	Mar 2019	Apr 2019	May 2019
Number in Foster Care	8,615	8,512	8,458	8,374	8,406	8,444	8,320	8,251	8,308	8,317	8,279	8,310	8,263

*Excludes CTH placements and includes children in 24 hour care and approximately 200 young children who are living in foster homes or residential care facilities with their mothers who are in foster care (8D children).

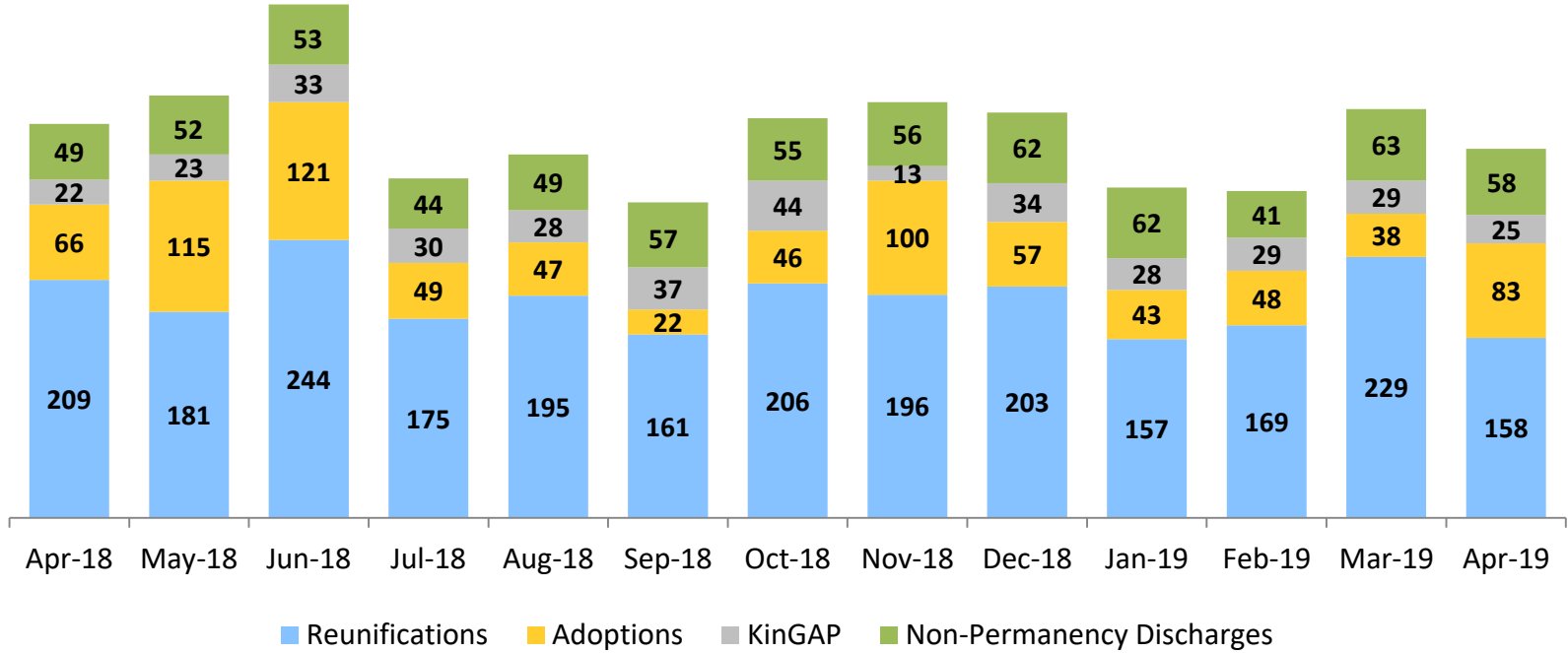
Children Freed for Adoption, Surrender by at Least One Parent

May 2018 – May 2019



	May 2018	Jun 2018	Jul 2018	Aug 2018	Sep 2018	Oct 2018	Nov 2018	Dec 2018	Jan 2019	Feb 2019	Mar 2019	Apr 2019	May 2019
Number Freed for Adoption	64	59	49	66	53	58	57	61	61	49	43	46	60

Permanency and Non-Permanency* Discharges from Foster Care** April 2018 – April 2019



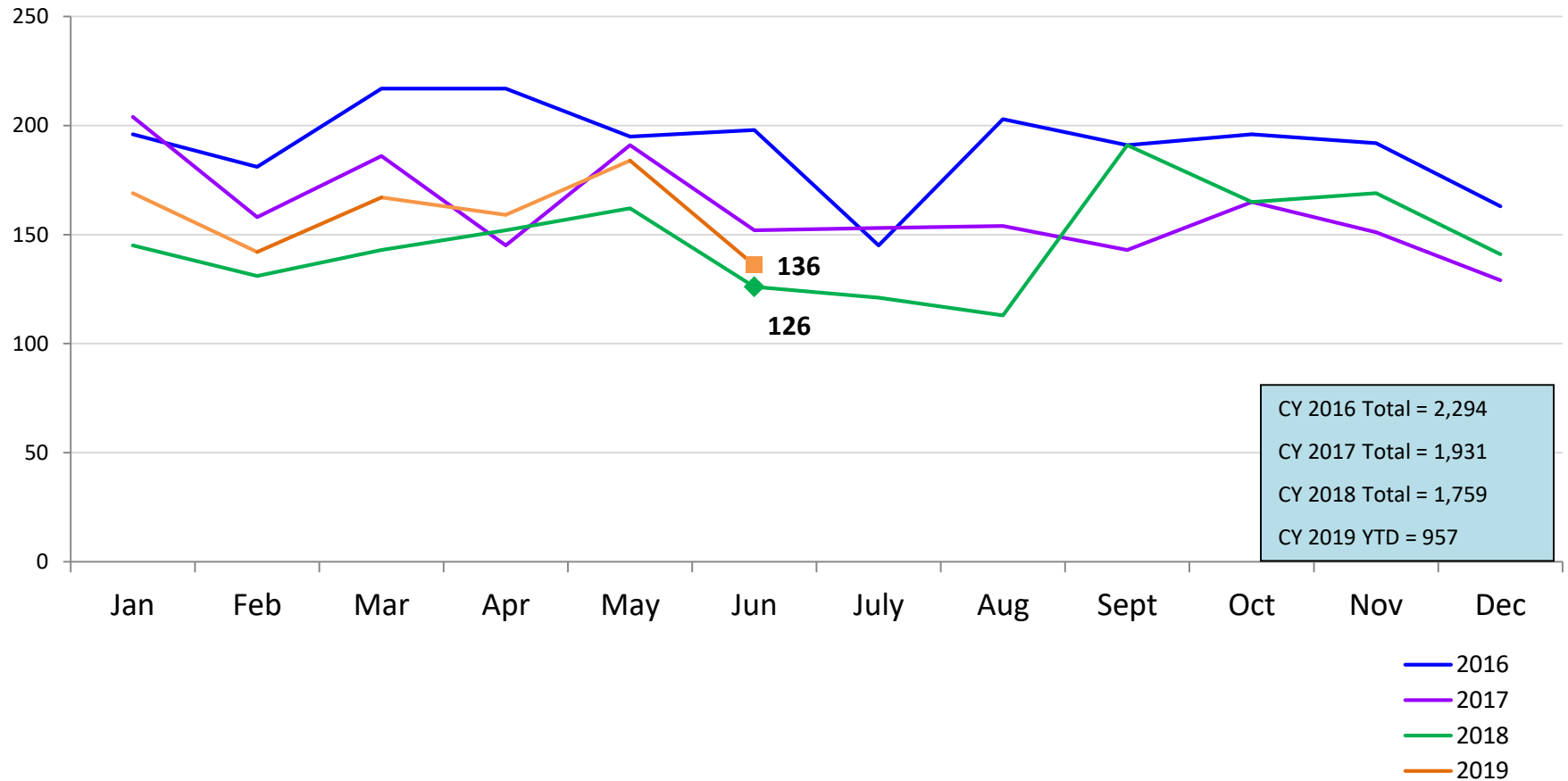
	Apr 2018	May 2018	Jun 2018	Jul 2018	Aug 2018	Sep 2018	Oct 2018	Nov 2018	Dec 2018	Jan 2019	Feb 2019	Mar 2019	Apr 2019
Number of Discharges	346	371	451	298	319	277	351	365	356	290	287	359	324

*The methodology for non-permanency discharges was changed September 2018. This statistic is not comparable to prior reports. Non-permanency discharges include AWOL, APPLA (youth 18-20 years old discharged to self and youth who reached 21 while in care), and other discharge destinations such as psychiatric institutions and correctional facilities and discharges with unspecified destinations.

**Excludes discharges of youth from CTH placements.

Total Monthly Admissions to Detention

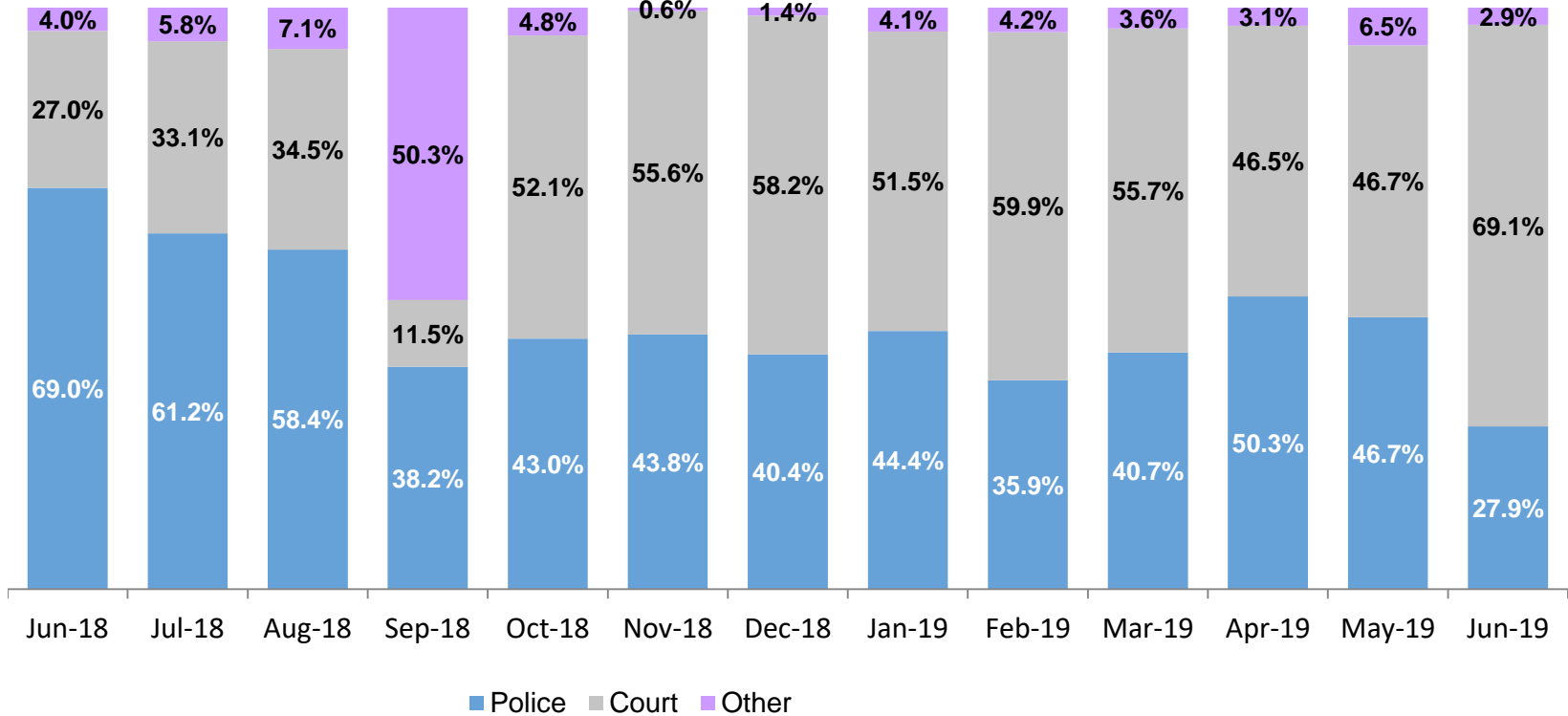
January 2016 – June 2019*



*Beginning in September 2018 detention admissions include admissions to the Horizon Juvenile Facility of 16 and 17 year olds moved off Rikers Island and pre-Raise the Age 17 year olds.

Admit Authority, Detention Admissions

June 2018 – June 2019*



	Jun 2018	Jul 2018	Aug 2018	Sep 2018	Oct 2018	Nov 2018	Dec 2018	Jan 2019	Feb 2019	Mar 2019	Apr 2019	May 2019	Jun 2019
Number of Admissions	126	121	113	191	165	169	141	169	142	167	159	184	136

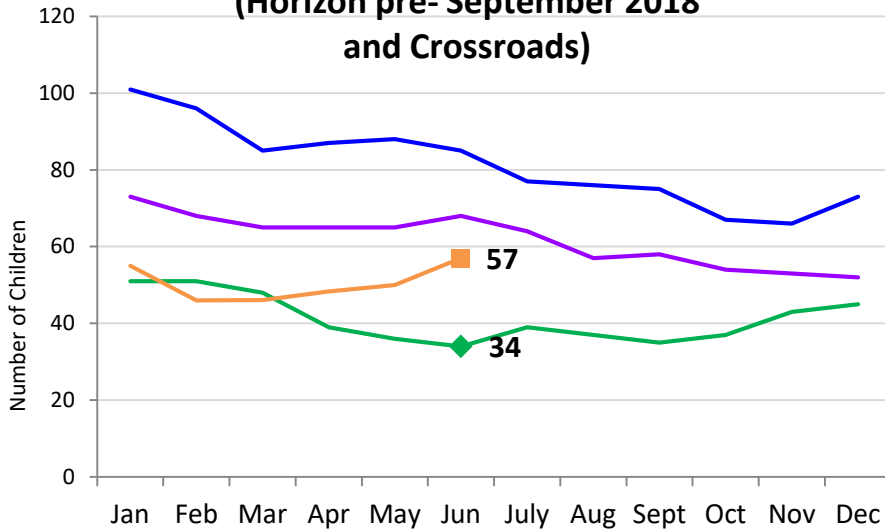
Note: Other Admit Authority includes the Sheriff Department, Department of Corrections and ACS.

*Beginning in September 2018 detention admissions include admissions to the Horizon Juvenile Facility of 16 and 17 year olds moved off Rikers Island and pre-Raise the Age 17 year olds.

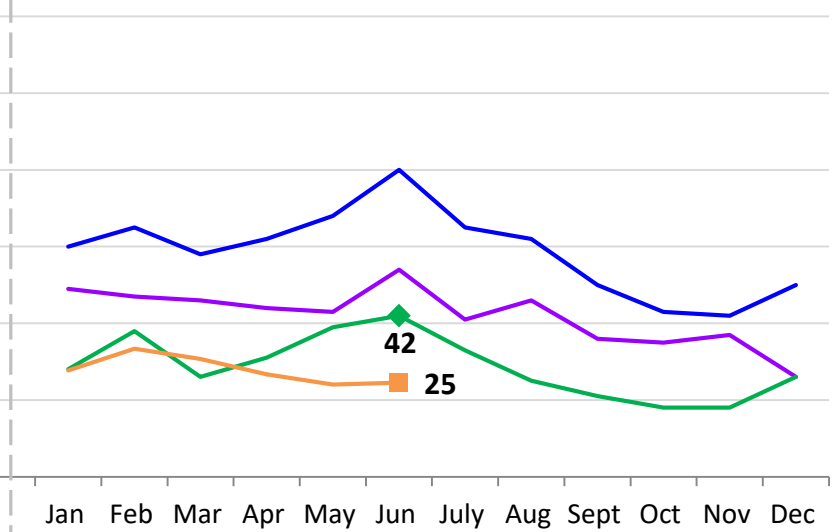
Monthly Average Daily Population

January 2016 – June 2019*

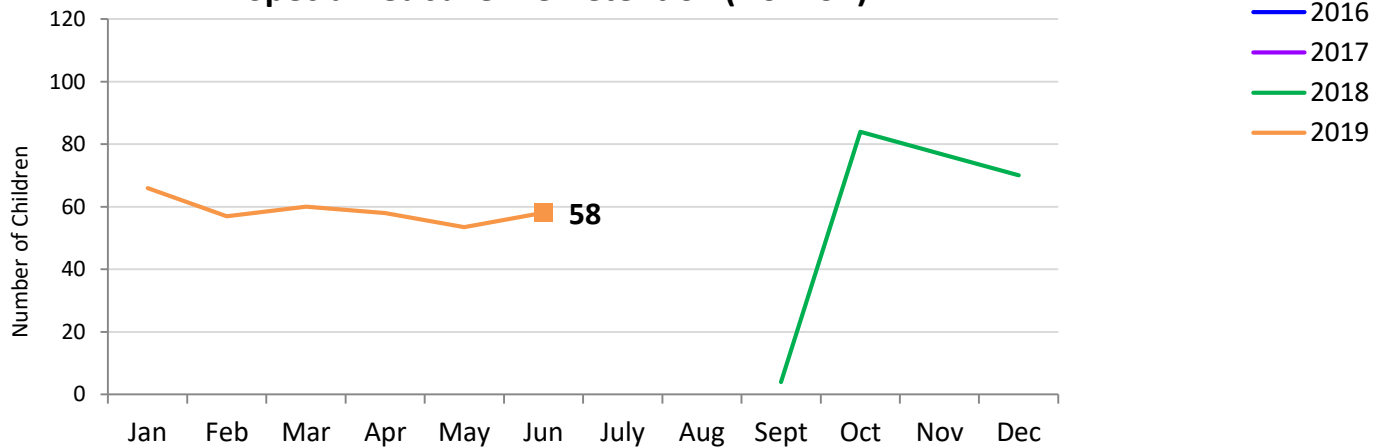
Secure Detention and Specialized Secure Detention (Horizon pre-September 2018 and Crossroads)



Non-Secure Detention



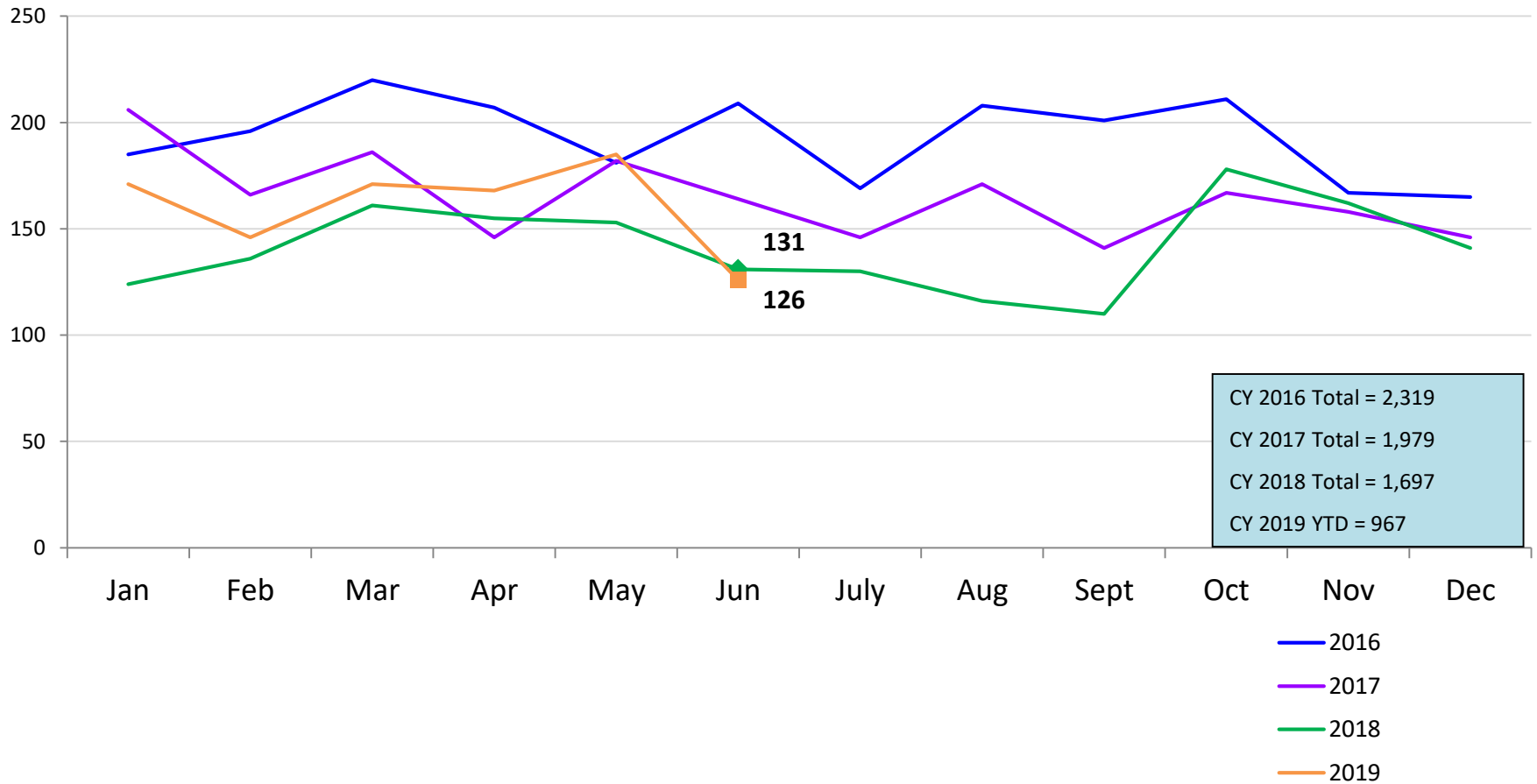
Specialized Juvenile Detention (Horizon)*



*Beginning in September 2018 the Horizon Juvenile Facility is housing 16 and 17 year olds moved off Rikers Island and pre-Raise the Age 17 year olds.

Total Monthly Releases from Detention

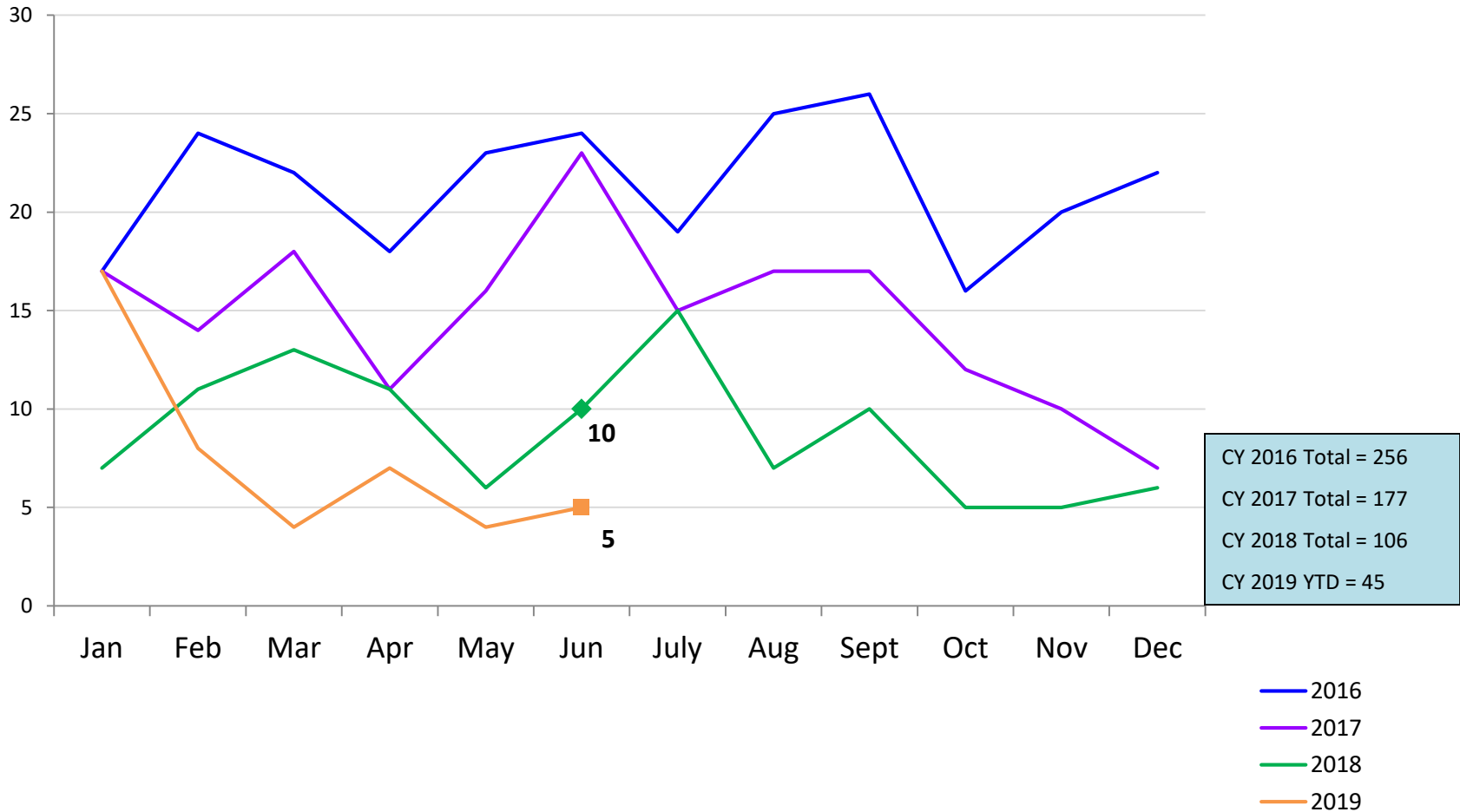
January 2016 – June 2019*



*Beginning in October 2018 detention releases include releases from the Horizon Juvenile Facility of 16 and 17 year olds moved off Rikers Island and pre-Raise the Age 17 year olds.

Close to Home Admissions*

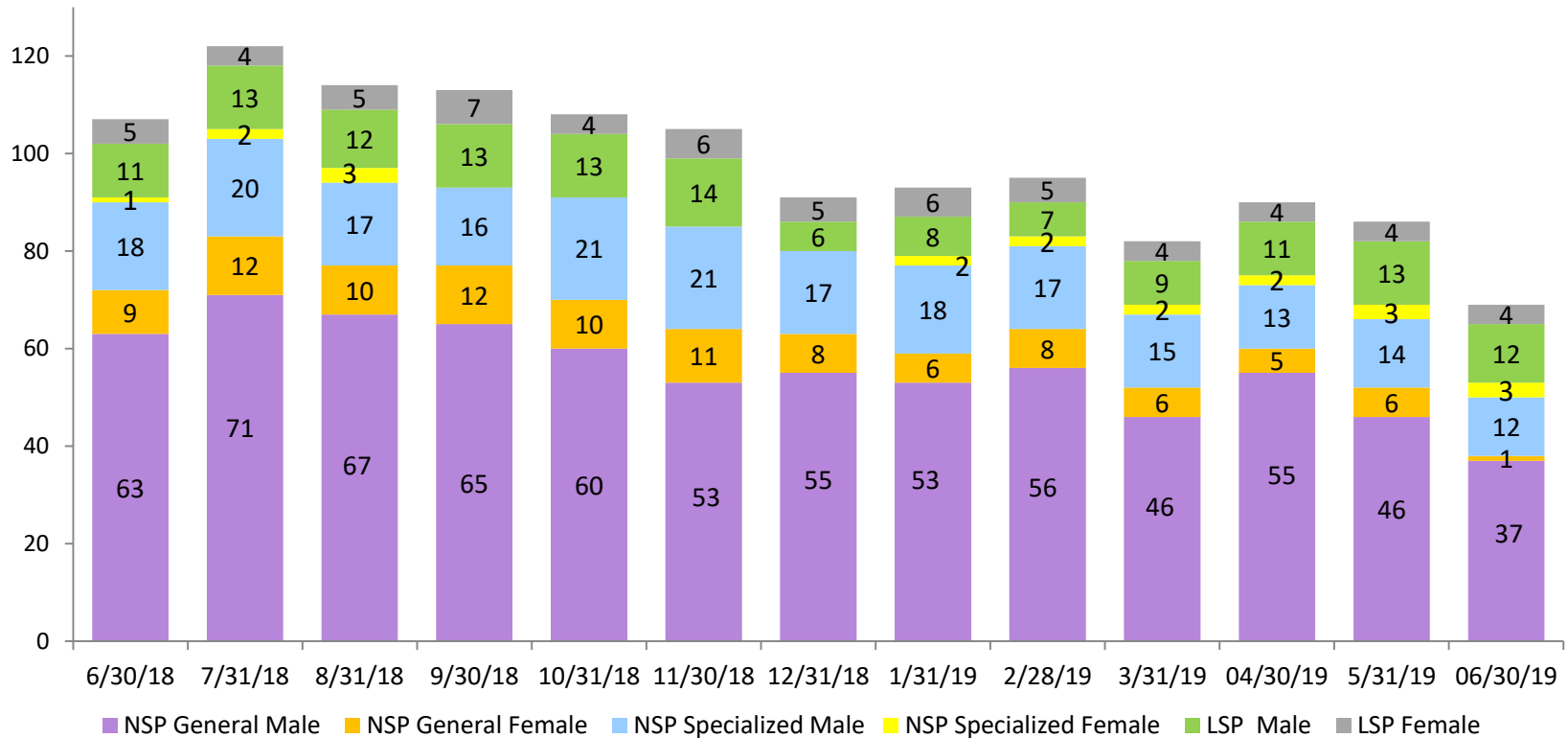
January 2016 – June 2019



*Beginning in December 2015 Close to Home admissions include LSP as well as NSP.

CTH Placement, in 24-hour Care

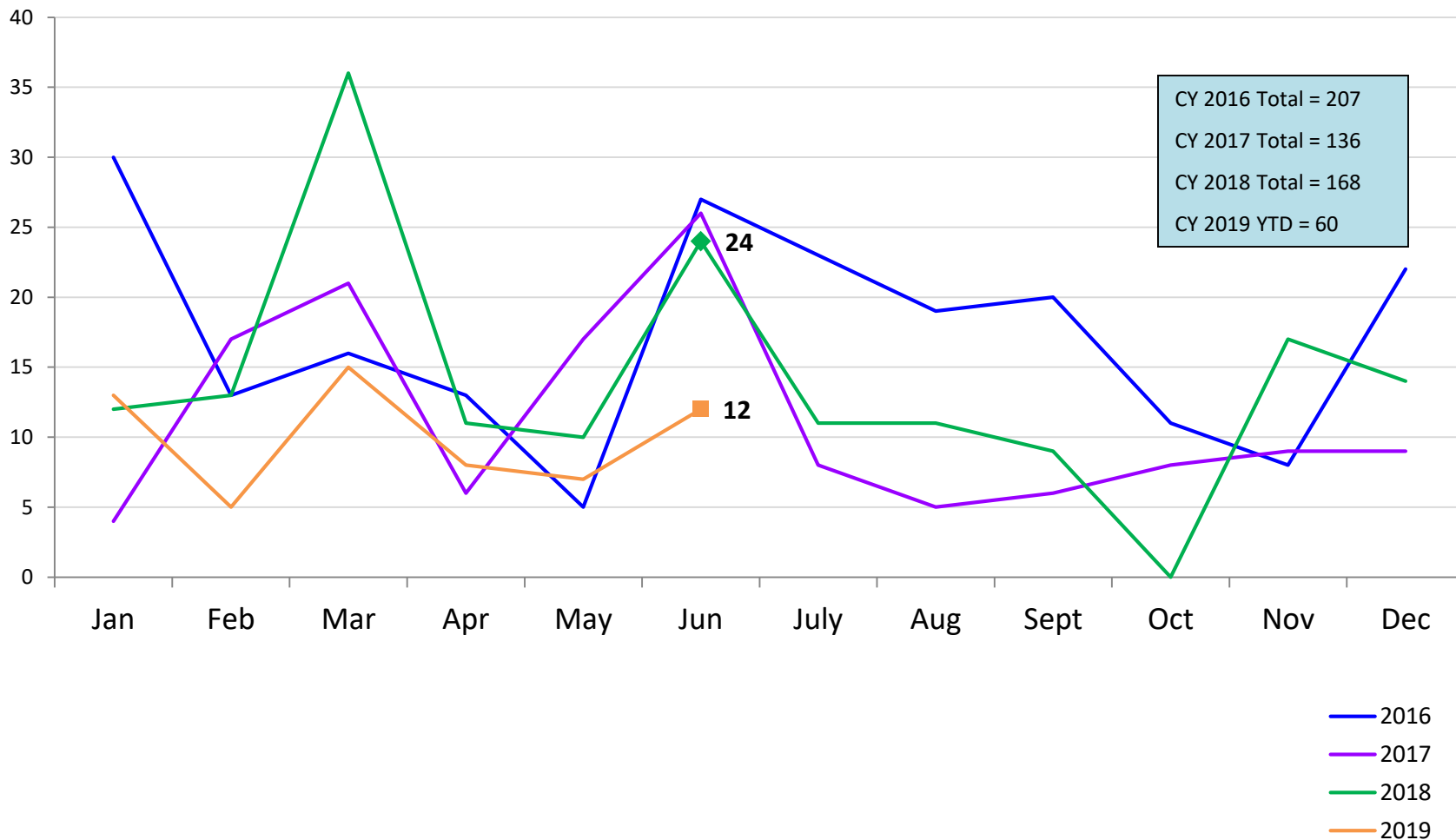
June 2018 – June 2019 (end of month)



Number in Placement													
	6/30/18	7/31/18	8/31/18	9/30/18	10/31/18	11/30/18	12/31/18	1/31/19	2/28/19	3/31/19	4/30/19	5/31/19	6/30/19
NSP	91	105	97	93	91	85	80	79	83	69	75	69	53
LSP	16	17	17	20	17	20	11	14	12	13	15	17	16

Releases from Close to Home Placement to Aftercare

January 2016 – June 2019



Appendix

Figure 1: SCR Intakes by Reporter Group, APRIL 18 – JUNE 18 and APRIL 19 – JUNE 19

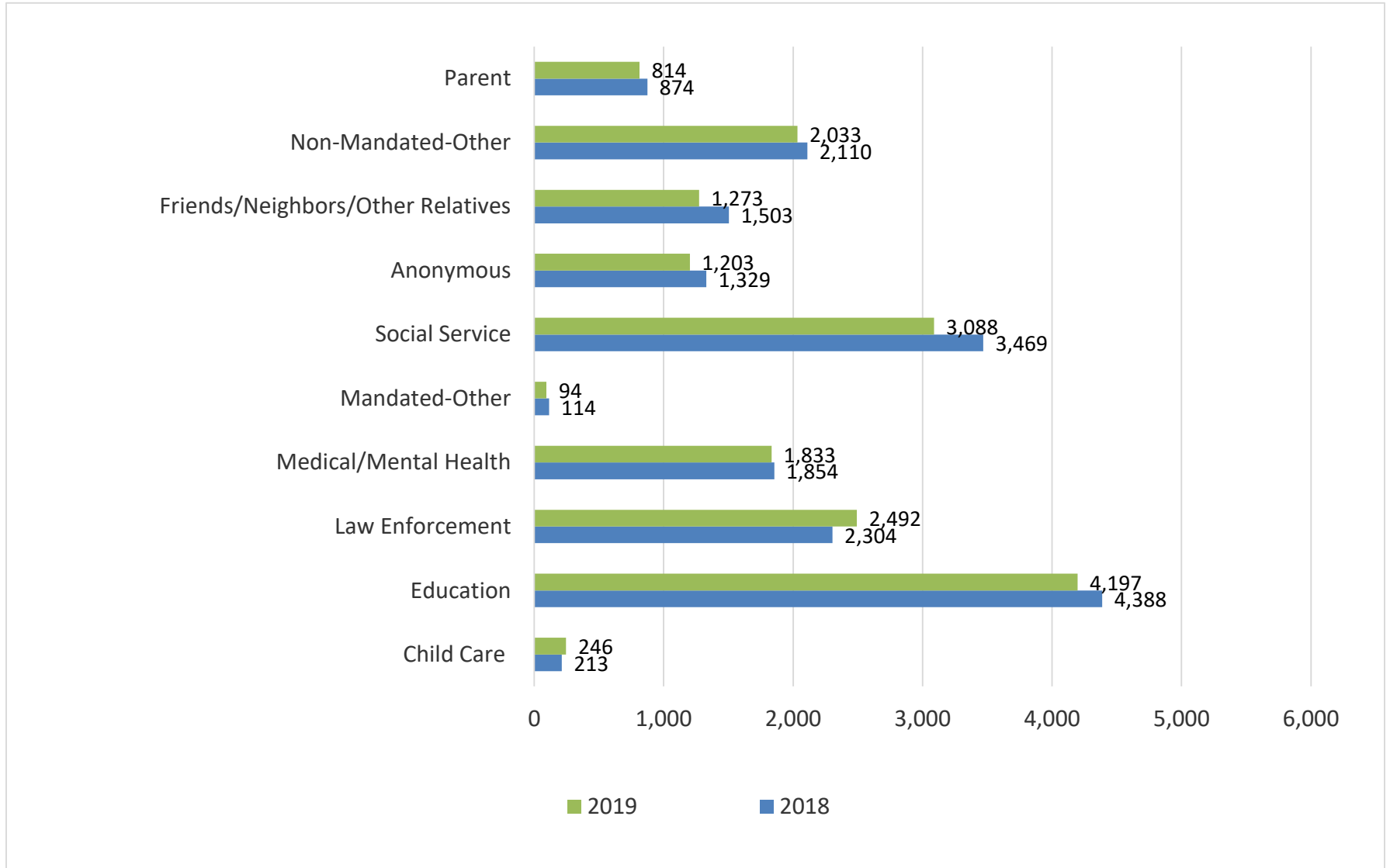
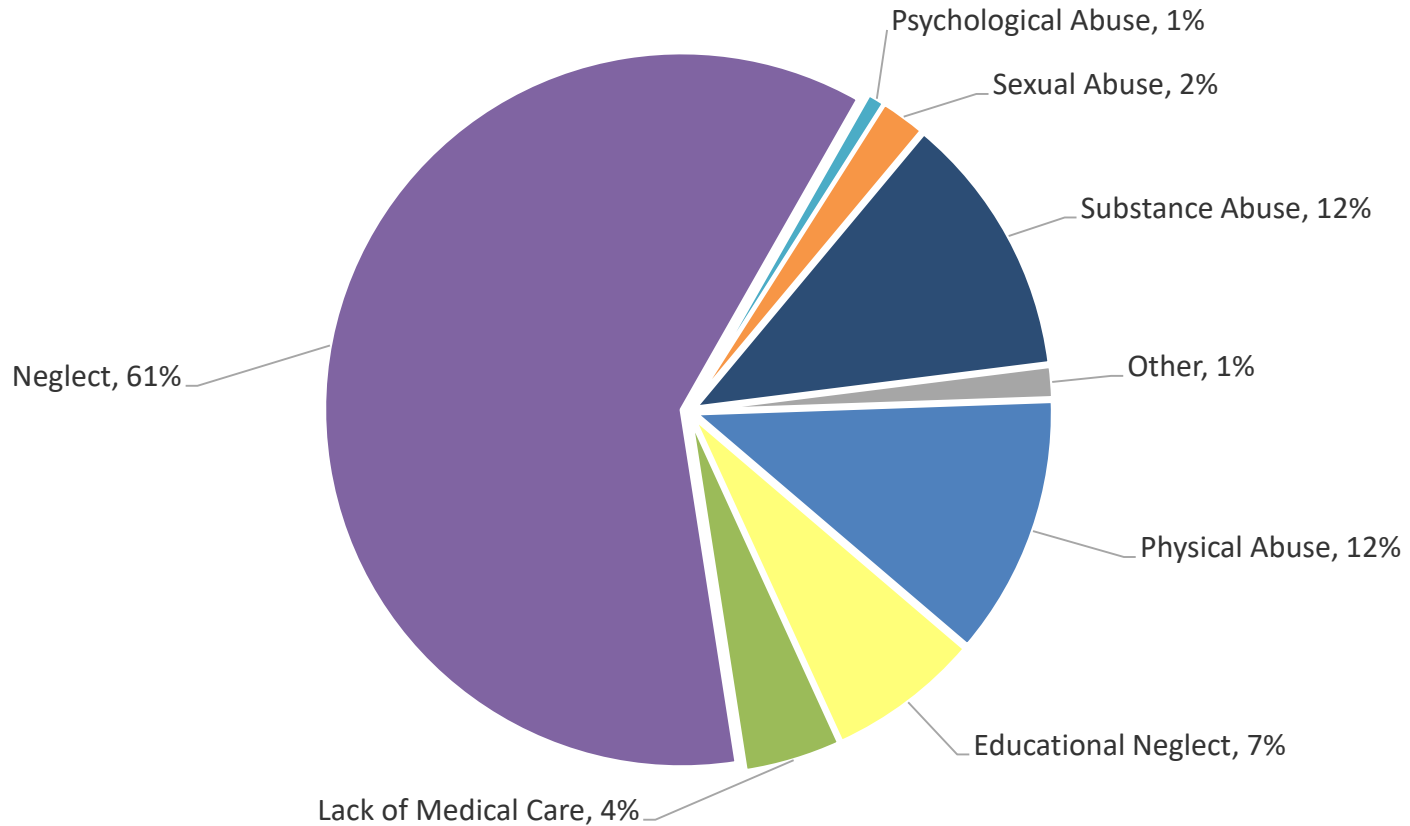


Figure 2: SCR Allegations, APRIL 19 – JUNE 19



Total Allegations = 41,233

Allegations are grouped as follows: Physical Abuse - burn, fatality, fracture, choking, twisting, shaking, excessive corporal punishment, internal injuries, lacerations, bruises, welts, poisoning, noxious substances; Educational Neglect – educational neglect; Lack of Medical Care – lack of medical care; Neglect - inadequate guardianship, inadequate food, clothing, shelter, lack of supervision, malnutrition, failure to thrive, swelling, dislocations, sprains; Psychological Abuse - isolation, emotional neglect; Sexual Abuse – sexual abuse; Substance Abuse - parental drug use, child drug use; and Other - abandonment, inappropriate custodial conduct.

Figure 3: SCR Investigations by Borough, APRIL 18 – JUNE 18 and APRIL 19 – JUNE 19

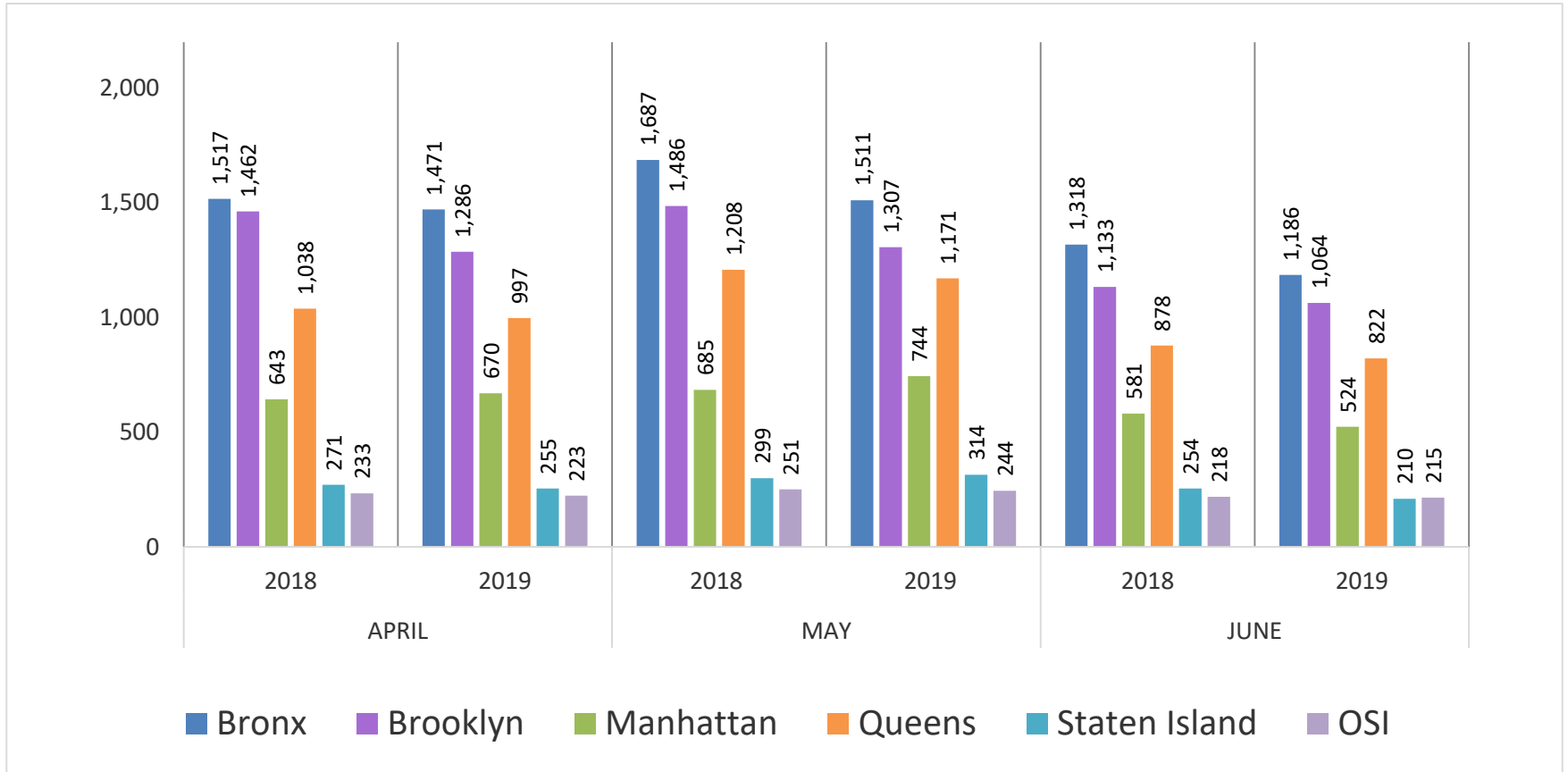


Table 1: SCR Investigations Changes by Borough, APRIL 18 – JUNE 18 and APRIL 19 – JUNE 19

Month	Year	Bronx	Brooklyn	Manhattan	Queens	Staten Island	OSI	Other	Total
APRIL	2018	1,517	1,462	643	1,038	271	233	153	5,317
	2019	1,471	1,286	670	997	255	223	157	5,059
	% Change	-3.0%	-12.0%	4.2%	-3.9%	-5.9%	-4.3%	2.6%	-4.9%
MAY	2018	1,687	1,486	685	1,208	299	251	212	5,828
	2019	1,511	1,307	744	1,171	314	244	177	5,468
	% Change	-10.4%	-12.0%	8.6%	-3.1%	5.0%	-2.8%	-16.5%	-6.2%
JUNE	2018	1,318	1,133	581	878	254	218	155	4,537
	2019	1,186	1,064	524	822	210	215	173	4,194
	% Change	-10.0%	-6.1%	-9.8%	-6.4%	-17.3%	-1.4%	11.6%	-7.6%
Total	2018	4,522	4,081	1,909	3,124	824	702	520	15,682
	2019	4,168	3,657	1,938	2,990	779	682	507	14,721
	% Change	-7.8%	-10.4%	1.5%	-4.3%	-5.5%	-2.8%	-2.5%	-6.1%

TABLE 2: Child Welfare Prevention Cases

New and Closed

January 2016 - June 2019

Month	New Cases	Closed Cases
2016		
Jan-16	797	770
Feb-16	900	795
Mar-16	1,029	978
Apr-16	835	892
May-16	890	966
Jun-16	996	935
Jul-16	842	1,069
Aug-16	897	1,006
Sep-16	820	850
Oct-16	776	627
Nov-16	728	490
Dec-16	816	462
2017		
Jan-17	551	449
Feb-17	602	920
Mar-17	864	1,032
Apr-17	645	780
May-17	790	925
Jun-17	908	944
Jul-17	765	852
Aug-17	875	864
Sep-17	841	747
Oct-17	870	762
Nov-17	778	737
Dec-17	817	728
2018		
Jan-18	724	567
Feb-18	776	783
Mar-18	879	776
Apr-18	792	613
May-18	755	857
Jun-18	736	837
Jul-18	808	856
Aug-18	892	954
Sep-18	751	755
Oct-18	856	767
Nov-18	787	699
Dec-18	847	717
2019		
Jan-19	875	708
Feb-19	767	726
Mar-19	891	856
Apr-19	844	802
May-19	839	865
Jun-19	788	843
Jul-19	-	-
Aug-19	-	-
Sep-19	-	-
Oct-19	-	-
Nov-19	-	-
Dec-19	-	-

**Table 3: Referrals to Child Welfare Prevention Services by Source
January 2016 - June 2019**

Month	Total Referrals	Division of Child Protection	Foster Care Agencies	PPRS Transfer	School	Self	Other Sources*
2016							
Jan-16	1,370	73.6%	1.6%	8.2%	0.7%	5.4%	10.6%
Feb-16	1,436	75.8%	2.2%	7.8%	1.0%	3.8%	9.3%
Mar-16	1,557	72.0%	2.1%	8.8%	1.0%	4.6%	11.4%
Apr-16	1,378	76.1%	1.5%	7.4%	1.5%	3.5%	10.0%
May-16	1,386	73.4%	1.4%	8.7%	1.0%	4.7%	10.8%
Jun-16	1,564	77.2%	2.4%	6.2%	1.5%	4.1%	8.6%
Jul-16	1,338	80.3%	1.7%	6.4%	1.0%	4.2%	6.4%
Aug-16	1,385	79.1%	1.8%	7.1%	0.4%	4.0%	7.6%
Sep-16	1,297	77.8%	2.1%	7.5%	0.8%	4.5%	7.4%
Oct-16	1,247	70.1%	2.0%	7.6%	1.5%	5.9%	12.9%
Nov-16	1,229	67.8%	2.0%	7.8%	1.2%	5.5%	15.8%
Dec-16	1,175	76.0%	1.5%	7.1%	1.3%	3.8%	10.3%
2017							
Jan-17	1,046	78.5%	1.4%	6.7%	0.7%	3.1%	9.7%
Feb-17	1,067	77.7%	0.8%	6.7%	0.8%	3.8%	10.1%
Mar-17	1,383	79.1%	0.6%	6.9%	0.9%	4.0%	8.5%
Apr-17	1,116	81.2%	1.0%	5.9%	1.1%	1.4%	9.4%
May-17	1,335	81.9%	0.9%	5.5%	1.3%	2.8%	7.6%
Jun-17	1,449	82.3%	0.8%	5.9%	1.2%	2.9%	6.9%
Jul-17	1,273	83.3%	0.9%	7.9%	0.7%	1.9%	5.3%
Aug-17	1,429	82.7%	0.6%	9.3%	0.3%	1.7%	5.2%
Sep-17	1,383	79.6%	1.6%	7.7%	0.8%	2.8%	7.4%
Oct-17	1,489	77.5%	1.5%	7.5%	1.0%	3.1%	9.4%
Nov-17	1,235	75.1%	1.5%	8.8%	2.2%	3.6%	8.8%
Dec-17	1,227	70.5%	1.6%	10.2%	2.4%	3.7%	11.5%
2018							
Jan-18	1,399	74.5%	1.5%	10.7%	1.4%	2.9%	9.0%
Feb-18	1,302	76.8%	1.5%	7.5%	1.3%	3.5%	9.4%
Mar-18	1,396	79.7%	1.5%	7.4%	1.2%	2.6%	7.5%
Apr-18	1,383	80.0%	1.2%	5.9%	1.1%	3.1%	8.7%
May-18	1,189	78.8%	1.3%	7.0%	1.0%	3.3%	8.7%
Jun-18	1,284	81.9%	0.5%	7.6%	0.9%	3.2%	6.0%
Jul-18	1,403	82.5%	0.7%	8.3%	0.6%	2.4%	5.5%
Aug-18	1,391	82.1%	1.7%	6.8%	0.4%	2.7%	6.3%
Sep-18	1,135	84.4%	1.5%	7.0%	0.9%	4.1%	2.1%
Oct-18	1,345	78.4%	1.5%	8.0%	1.2%	3.9%	7.0%
Nov-18	1,107	73.8%	1.4%	9.5%	1.5%	4.3%	9.5%
Dec-18	1,179	68.7%	1.7%	10.9%	2.7%	5.1%	10.9%
2019							
Jan-19	1,373	74.3%	1.7%	8.4%	1.6%	3.8%	10.3%
Feb-19	1,096	77.5%	0.9%	7.9%	2.2%	2.8%	8.7%
Mar-19	1,292	72.4%	1.2%	10.4%	1.5%	4.4%	10.1%
Apr-19	1,299	76.9%	1.5%	7.5%	2.8%	3.8%	7.4%
May-19	1,313	80.0%	1.1%	7.9%	1.8%	3.2%	6.1%
Jun-19	1,159	84.3%	1.2%	7.2%	0.4%	2.5%	4.3%

*Other Community Sources includes the Department of Homeless Services, Family Court, FAP, Hospitals and Medical facilities, the NYC Housing Authority, Probation, and Sponsor Agencies.