

s be Loving, hopeful Optimistic. And change the World -Jack Layton 1950-2011

FLASH

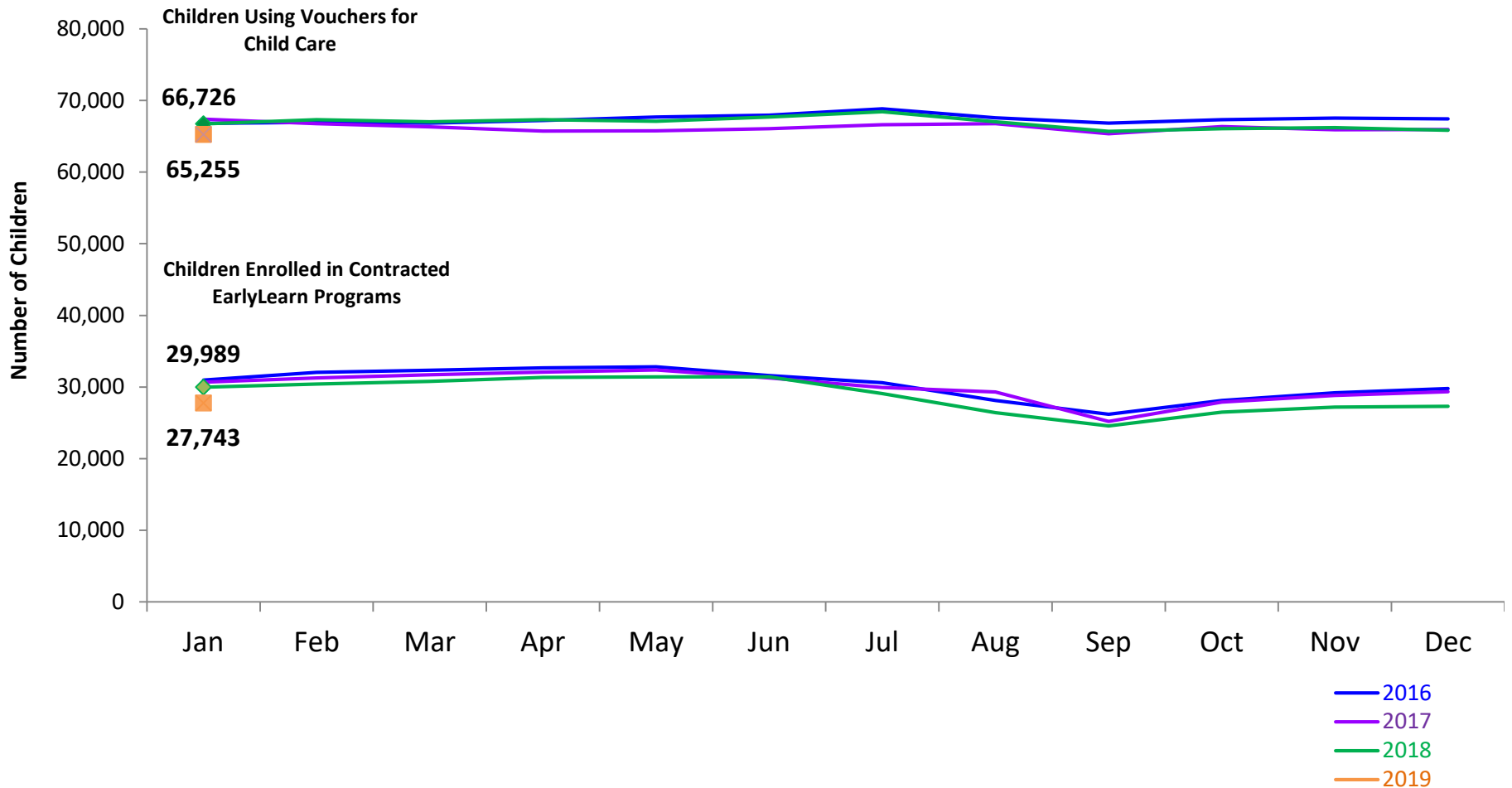
monthly indicator

REPORT

February 2019

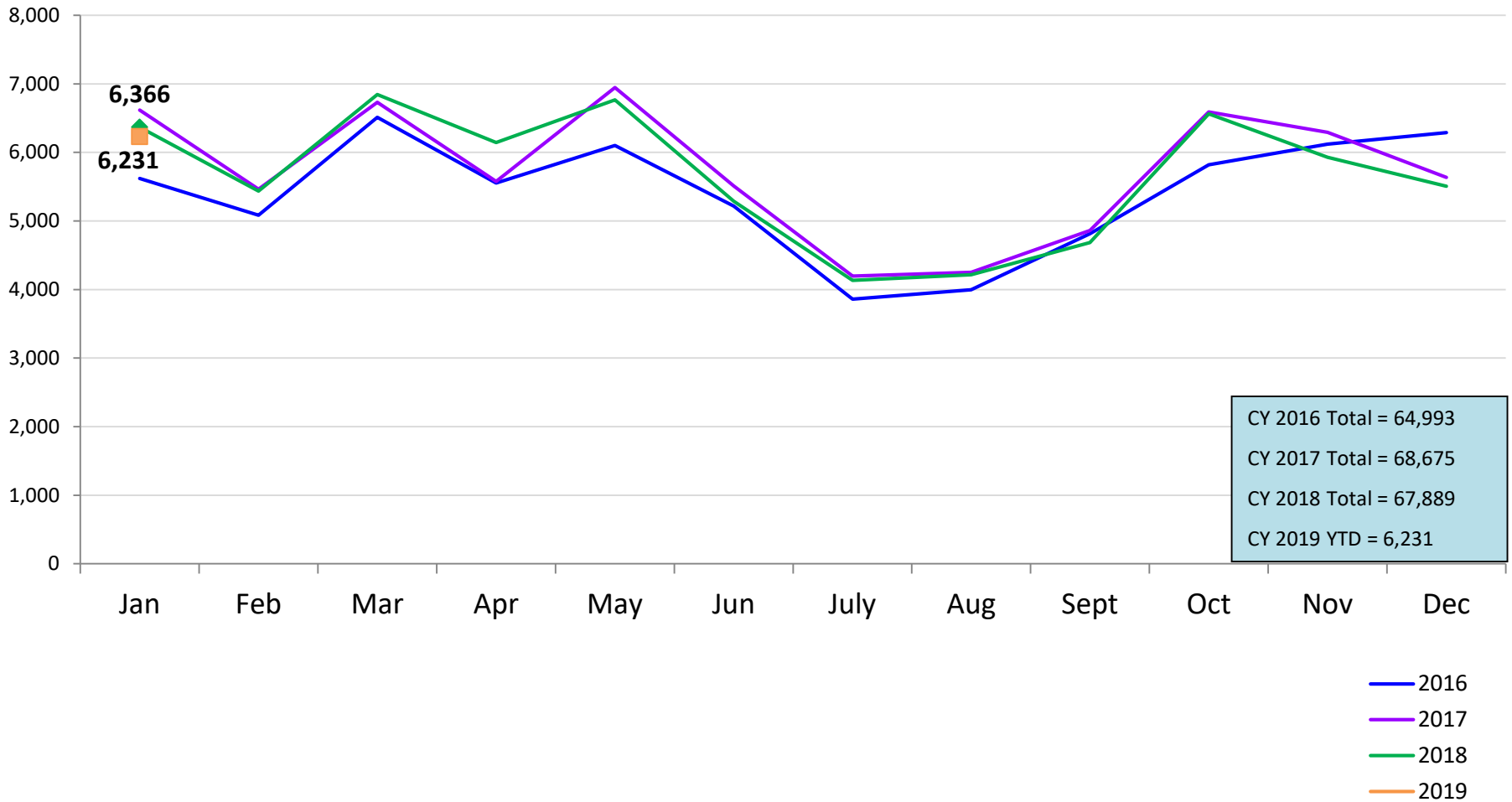
Children Enrolled in Contracted EarlyLearn Programs and Children Using Vouchers for Child Care

January 2016 – January 2019 (End of Month)



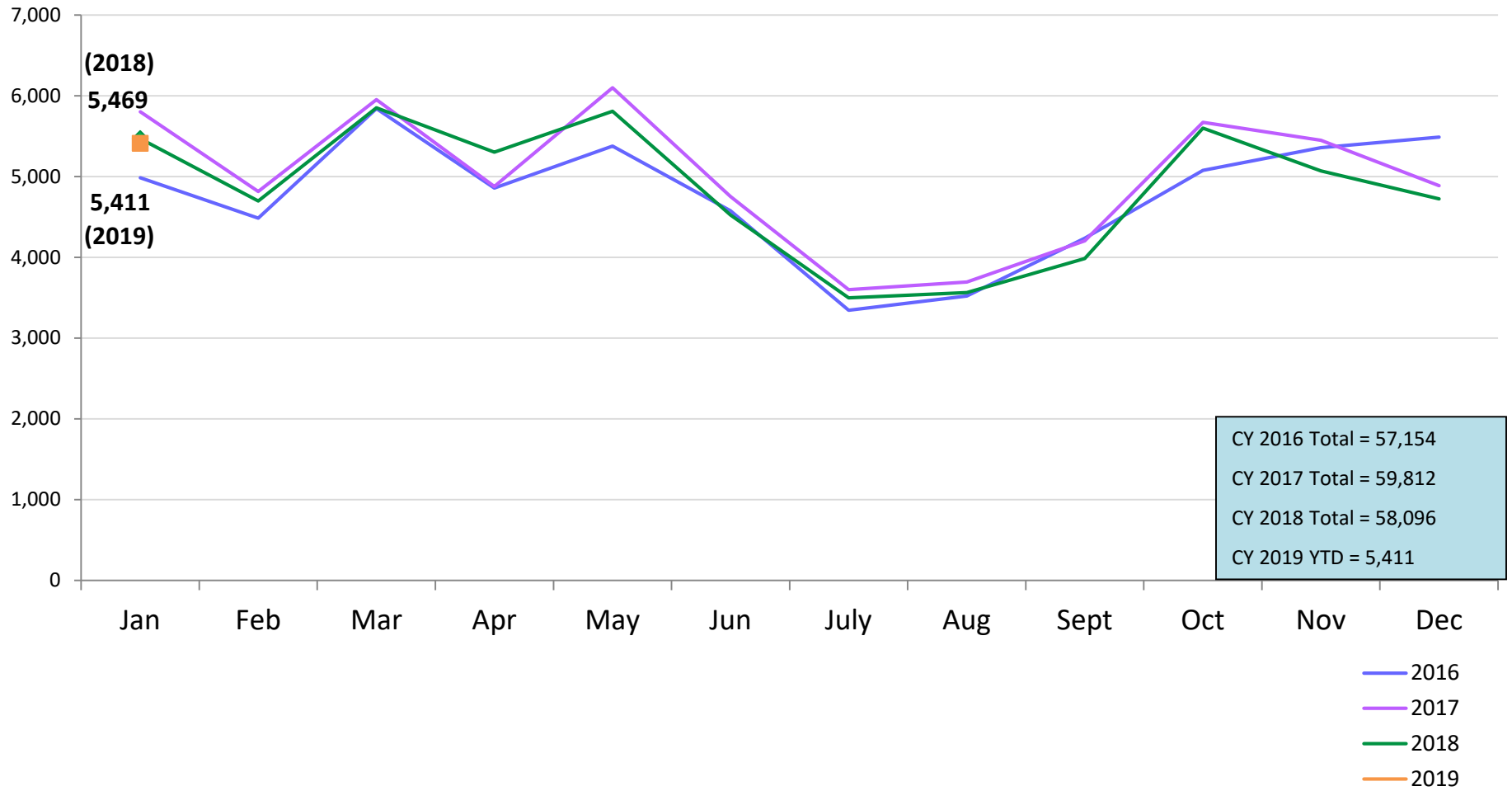
SCR Intakes

January 2016 – January 2019



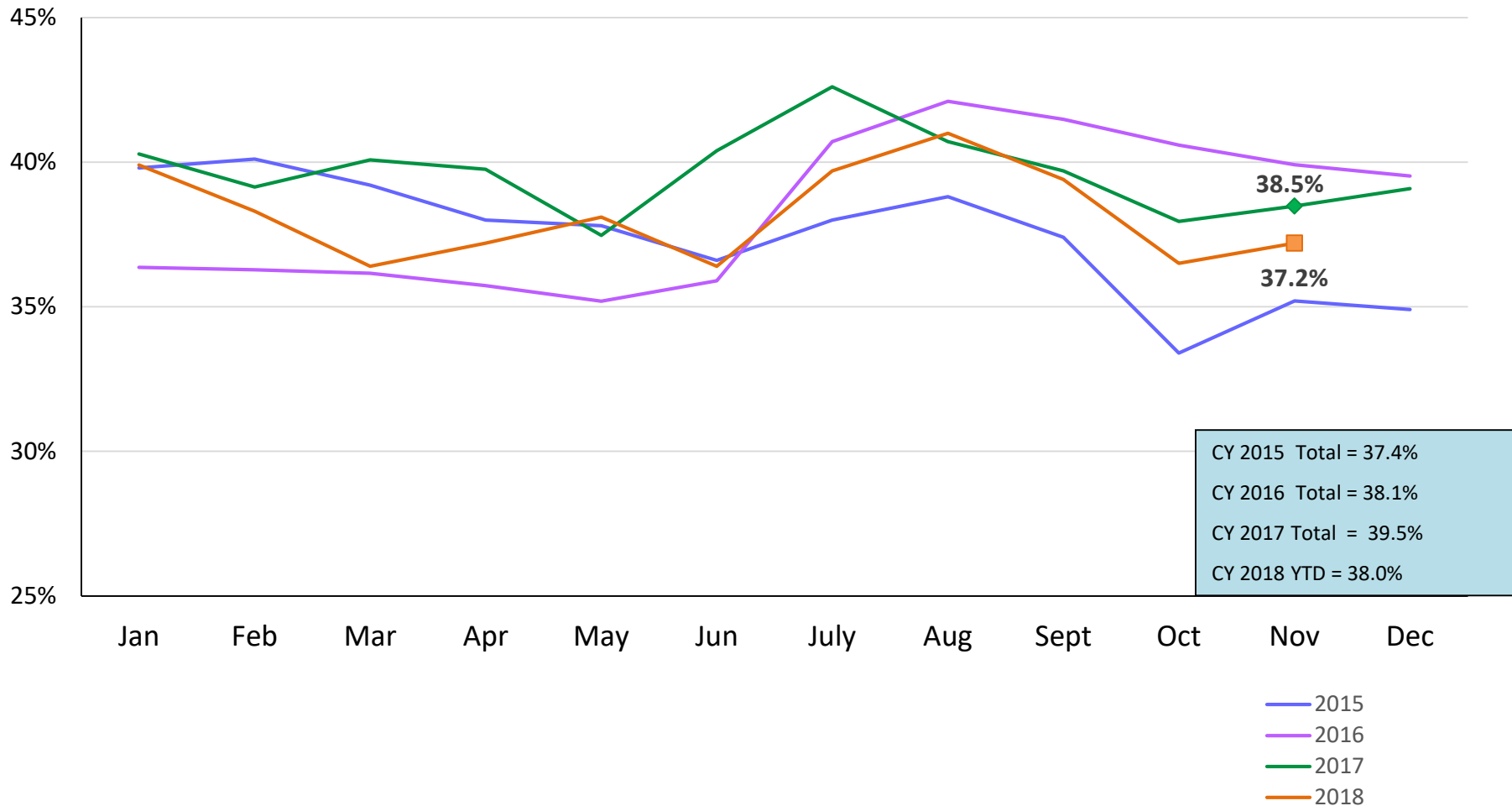
SCR Consolidated Investigations

January 2016 – January 2019



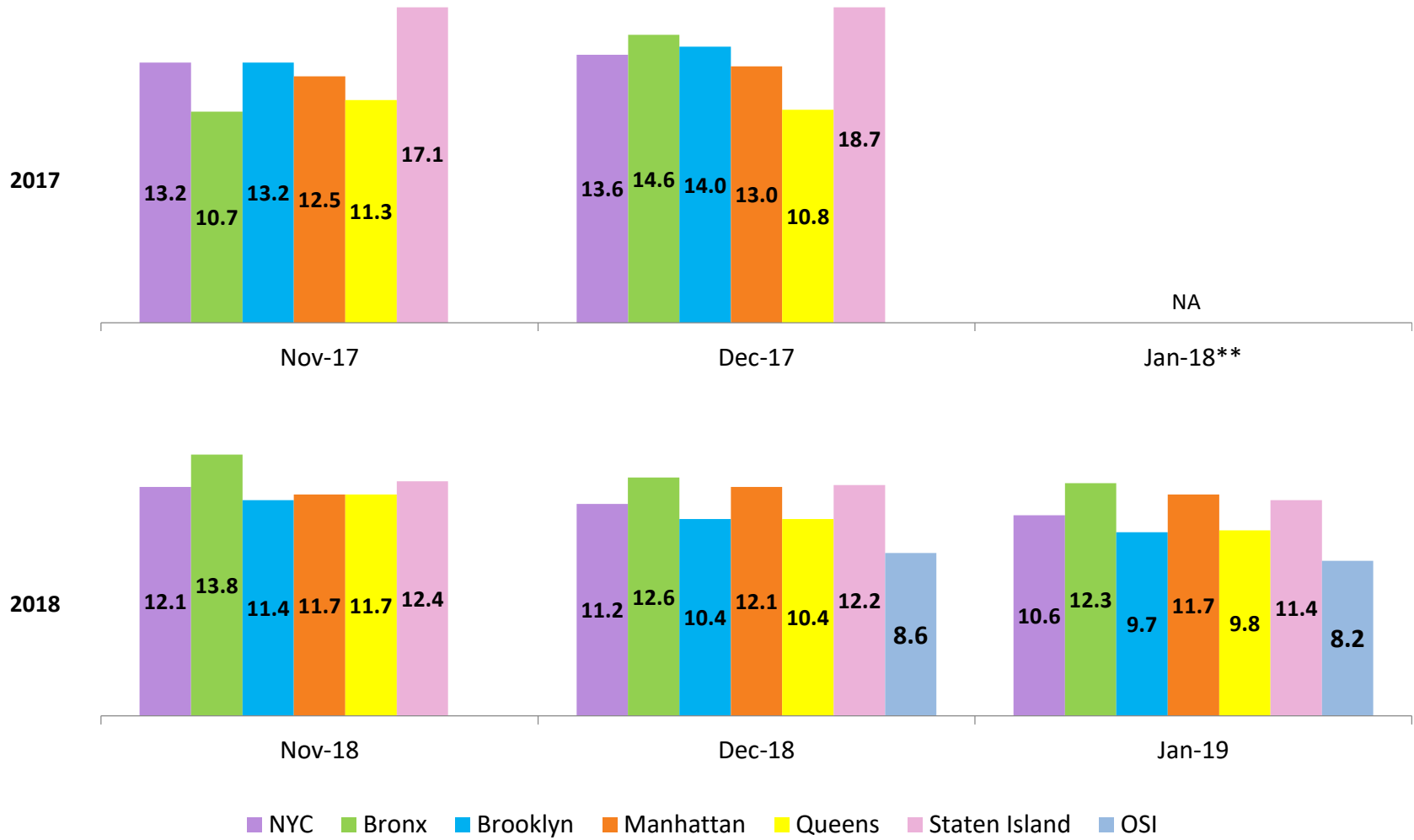
Percent of Investigations that Found Some Credible Evidence of Abuse or Neglect

January 2015 – November 2018



Average Child Protection Caseload*

November – December 2017 and November 2018 – January 2019

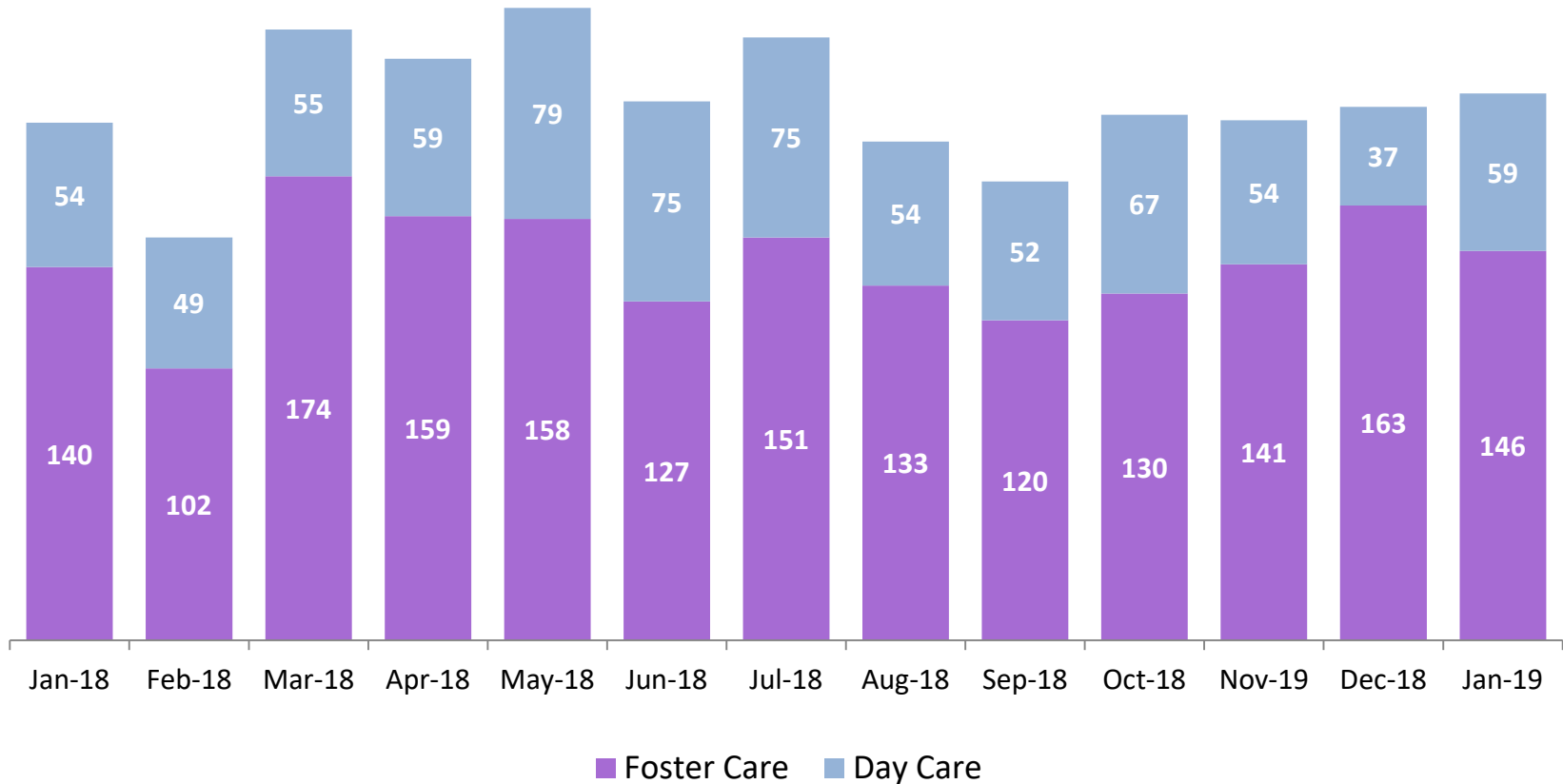


*Prior to December 2018 caseloads are of Protective/Diagnostic Unit (Child Protection, School Based, Sex Abuse and Hospital Units) caseworkers only. Beginning December 2018, all caseload carrying 6 Child Protection Specialists (CPS) in investigative and Family Assessment Response Units are included. Includes CPS in Primary and Case Manager roles only.

**Due to a technical problem caseload statistics were not available in January 2018.

OSI Foster Care and Day Care* Investigations

January 2018 – January 2019

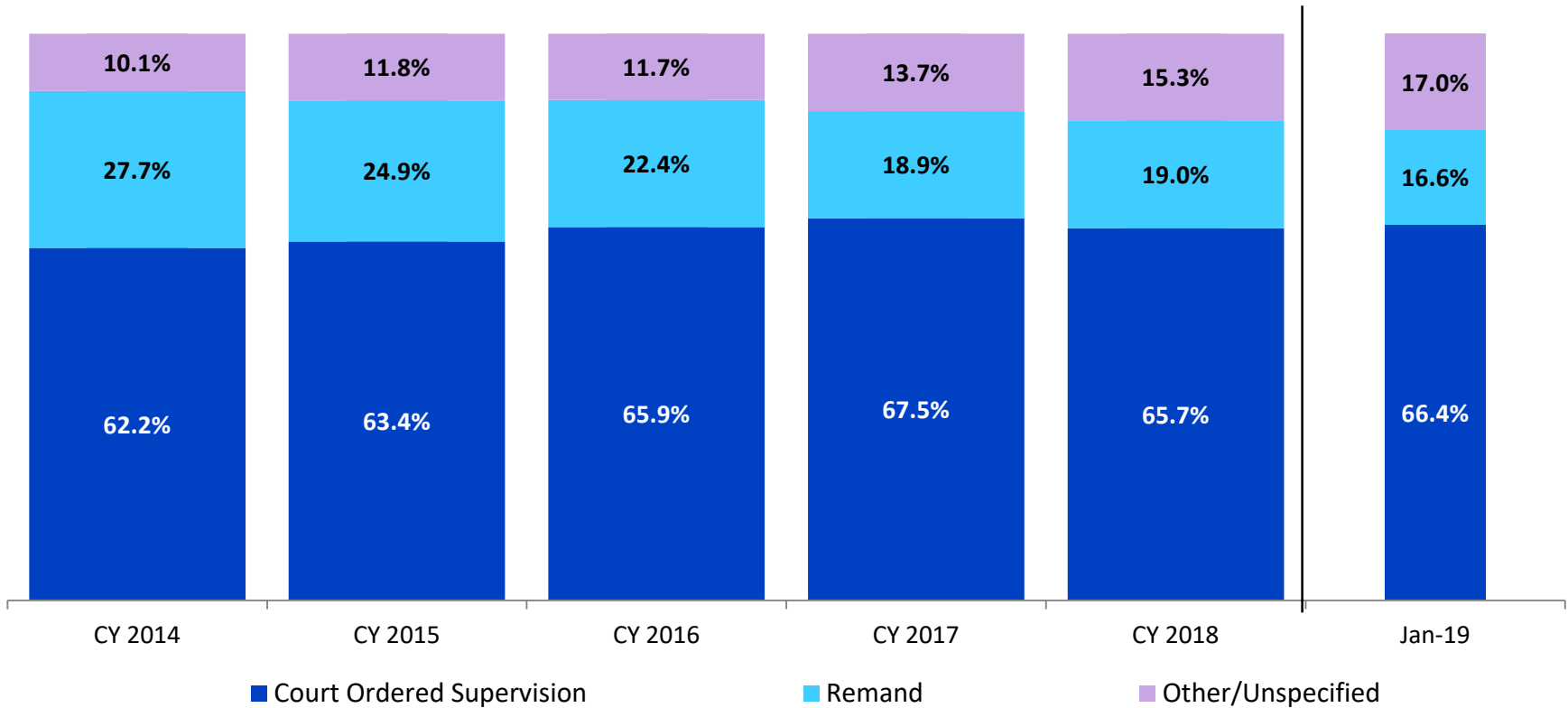


	Jan 2018	Feb 2018	Mar 2018	Apr 2018	May 2018	Jun 2018	Jul 2018	Aug 2018	Sep 2018	Oct 2018	Nov 2018	Dec 2018	Jan 2019
Number of Investigations	194	151	229	218	237	202	226	187	172	197	195	200	205

*Day Care investigations include alleged abuse or maltreatment of children perpetrated by someone who cares for children in a setting that is not the child’s familial home and that requires state or local government approval and is subject to state laws, regulations, and oversight. This includes, but is not limited to, ACS Early Care and 7 Education programs.

Article 10 Filings and Initial Hearing Outcomes, Children

CY 2014 – January 2019

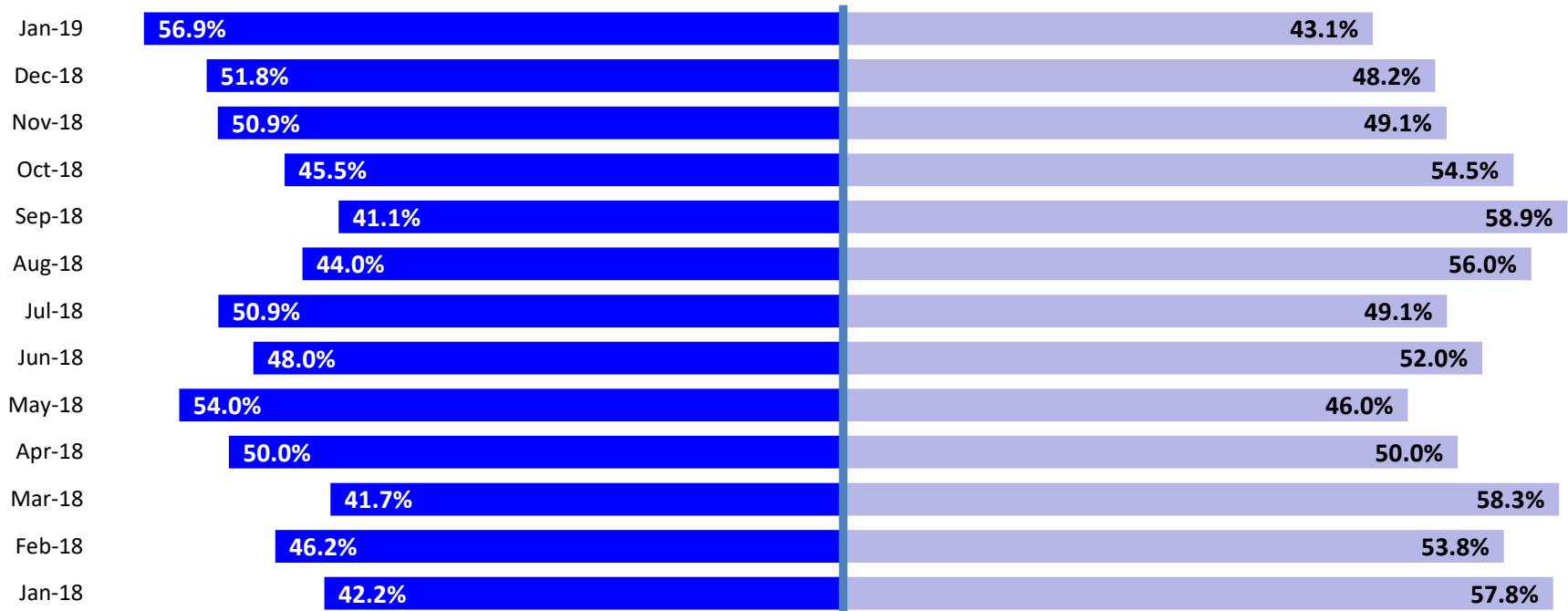


	CY 2014	CY 2015	CY 2016	CY 2017	CY 2018	Jan 2019
Children with Article 10 Filings	9,900	9,958	10,973	15,975	13,319	1,088

Note: The category “Other/Unspecified” includes released with no supervision, no order issued and no outcome specified.

Remands Approved at Initial Article 10 Hearing by Removal Status

January 2018 – January 2019

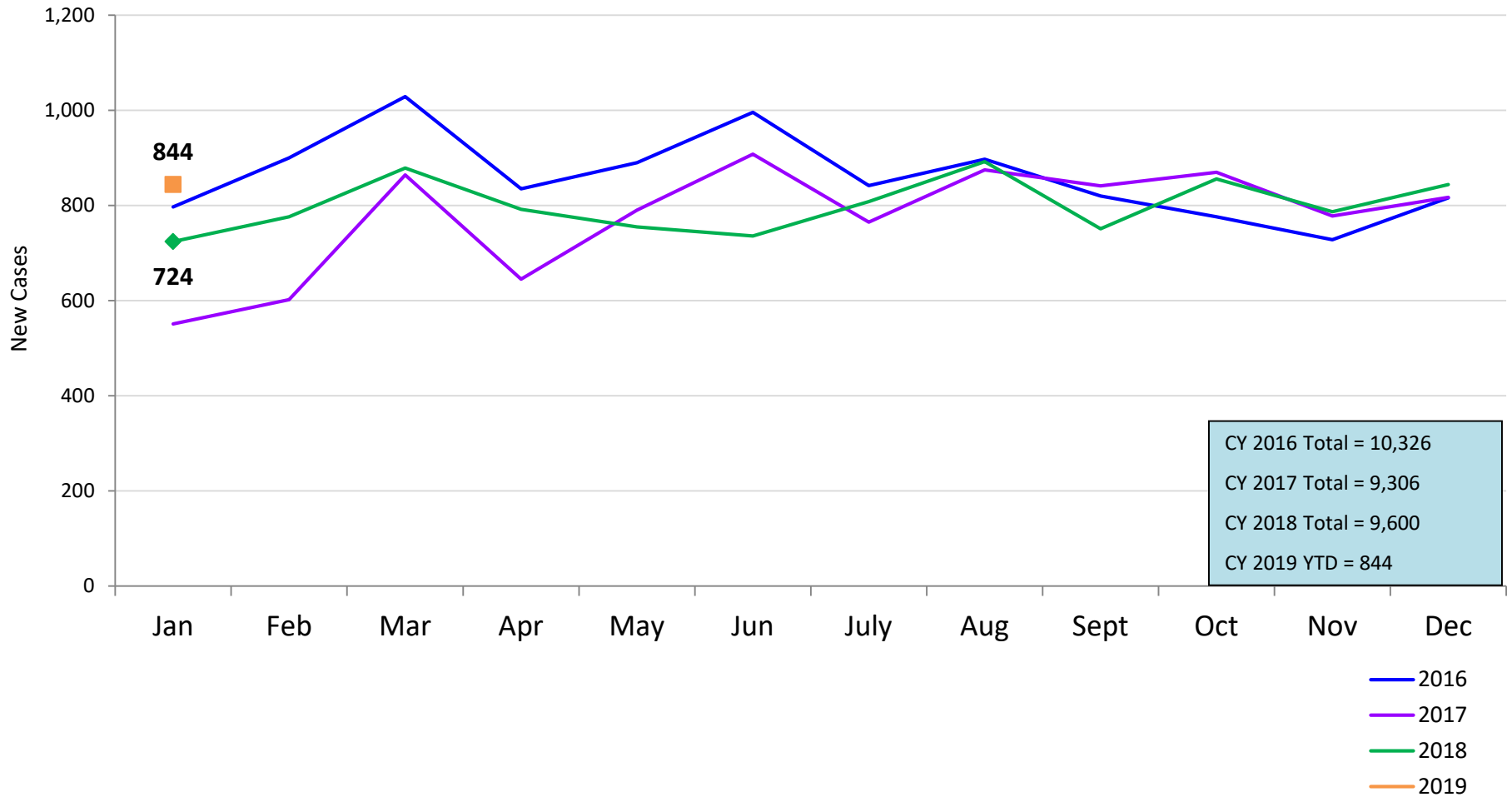


■ Pre-Filing Emergency Removals (court approved at initial hearing) ■ Post-Filing Removals (court ordered at initial hearing)

	Jan 2018	Feb 2018	Mar 2018	Apr 2018	May 2018	Jun 2018	Jul 2018	Aug 2018	Sep 2018	Oct 2018	Nov 2018	Dec 2018	Jan 2019
Children Remanded	206	186	230	236	235	200	173	259	151	297	167	193	181

New Child Welfare Prevention Cases*

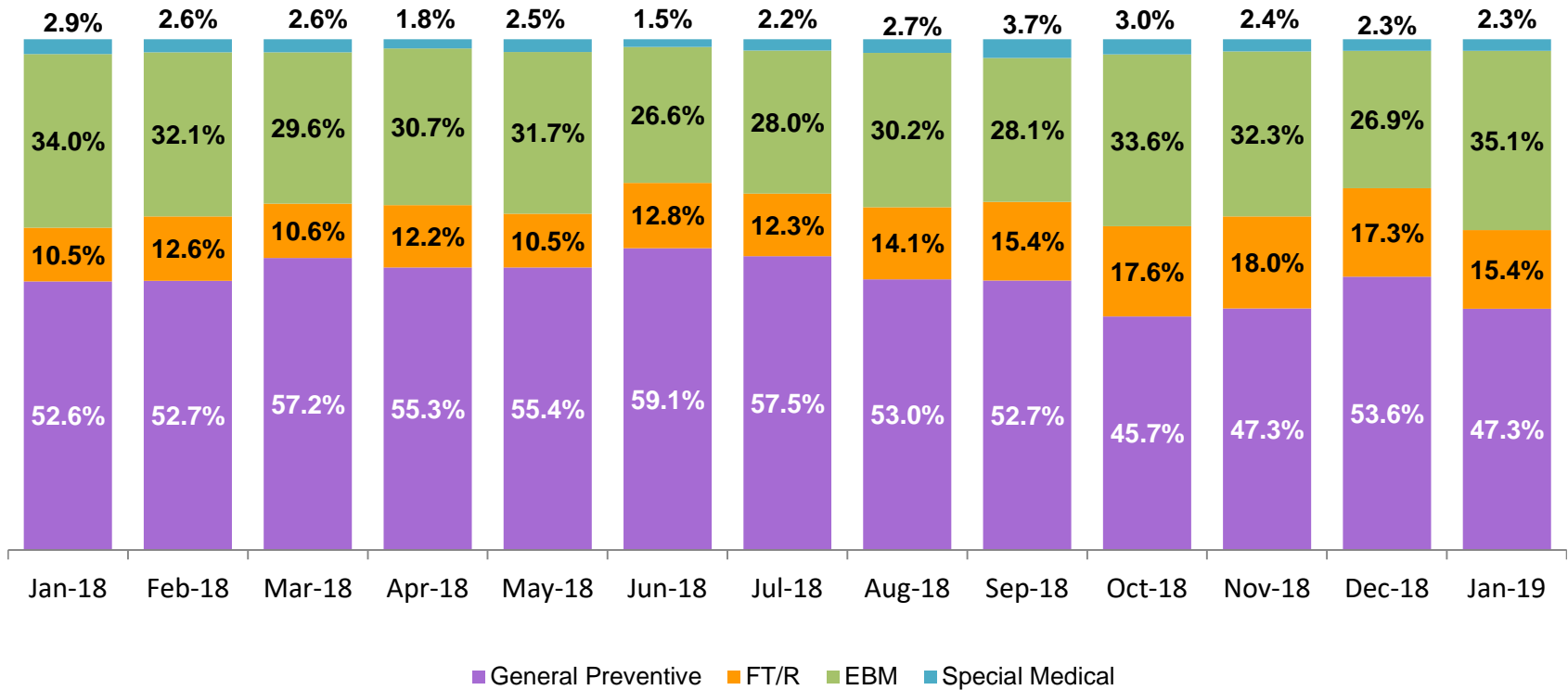
January 2016 – January 2019



* New prevention cases do not include cases transferred from one preventive program to another. See Pages 32 and 33 of the Appendix for supporting data.

New Child Welfare Prevention Cases by Program Type *

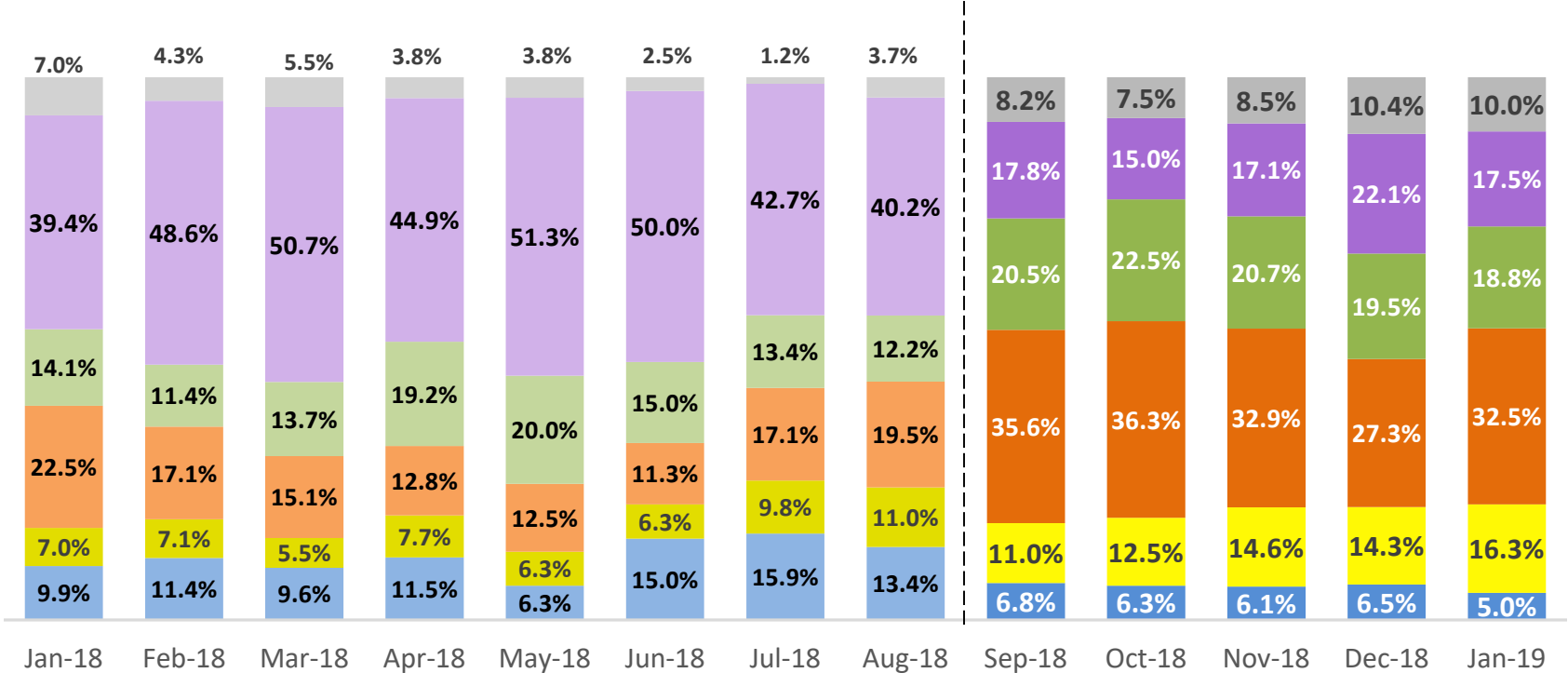
January 2018 – January 2019



	Jan 2018	Feb 2018	Mar 2018	Apr 2018	May 2018	Jun 2018	Jul 2018	Aug 2018	Sep 2018	Oct 2018	Nov 2018	Dec 2018	Jan 2019
Number of New Preventive Cases	724	776	879	792	755	736	808	892	751	856	787	844	844

* New prevention cases exclude cases transferred from one prevention program to another.

Average Daily Children’s Center Population January 2018 – January 2019



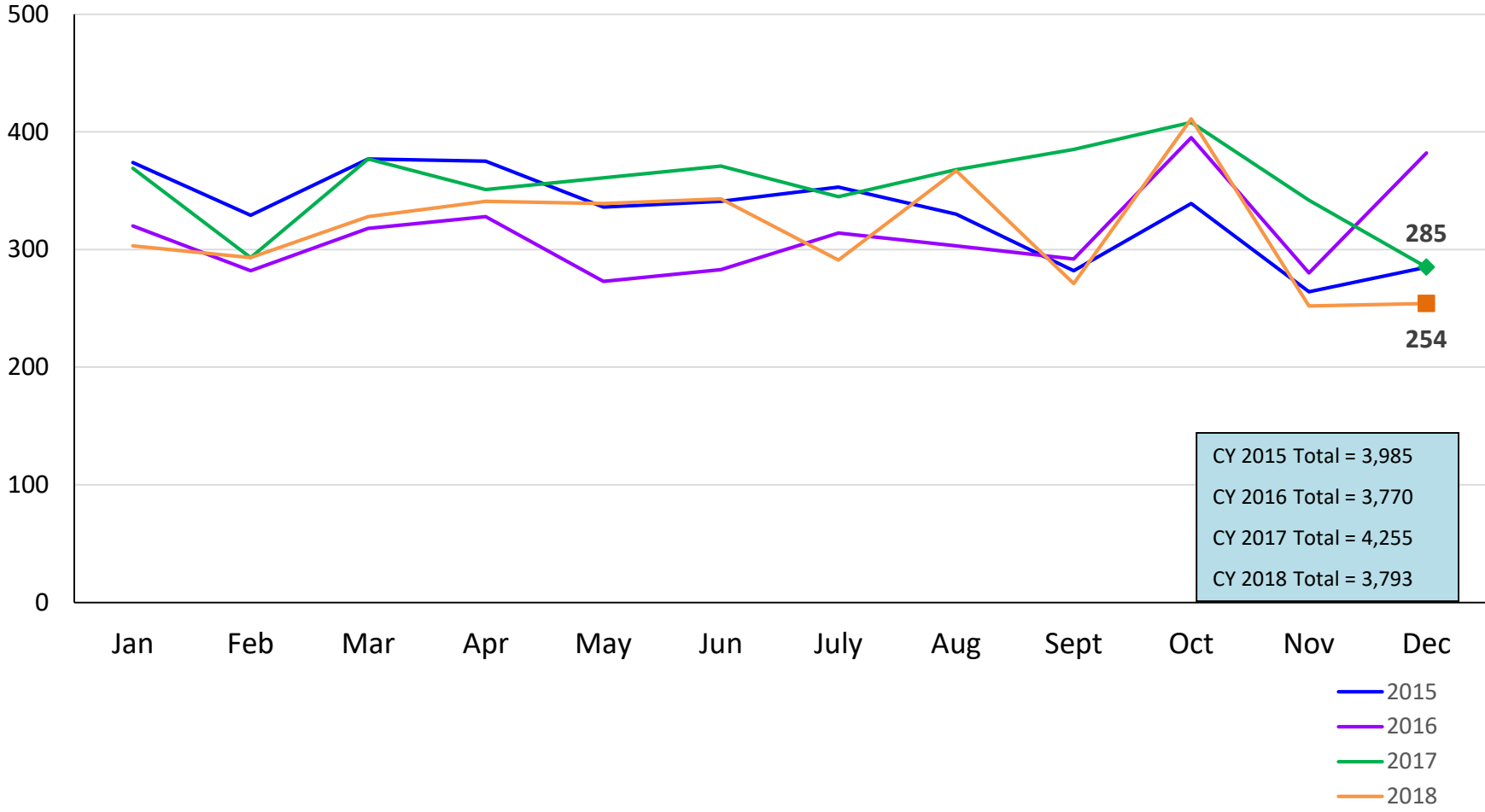
- Newborn - 3 years old
- 4-6 years old
- 7-10 years old
- 11-13 years old
- 14-18 years old
- >=19 yrs
- Newborn - 1 year old
- 2-6 years old
- 7-12 years old
- 13-15 years old
- 16-17 years old
- 18+ years old

	Jan 2018	Feb 2018	Mar 2018	Apr 2018	May 2018	Jun 2018	Jul 2018	Aug 2018*	Sep 2018	Oct 2018	Nov 2018	Dec 2018	Jan 2019
Average Number of Children	71	70	73	78	80	80	82	82	73	80	82	77	80

Notes: 1)August 2018 includes data from August 1st to August 28th. 2) New age groups were introduced in September 2018.

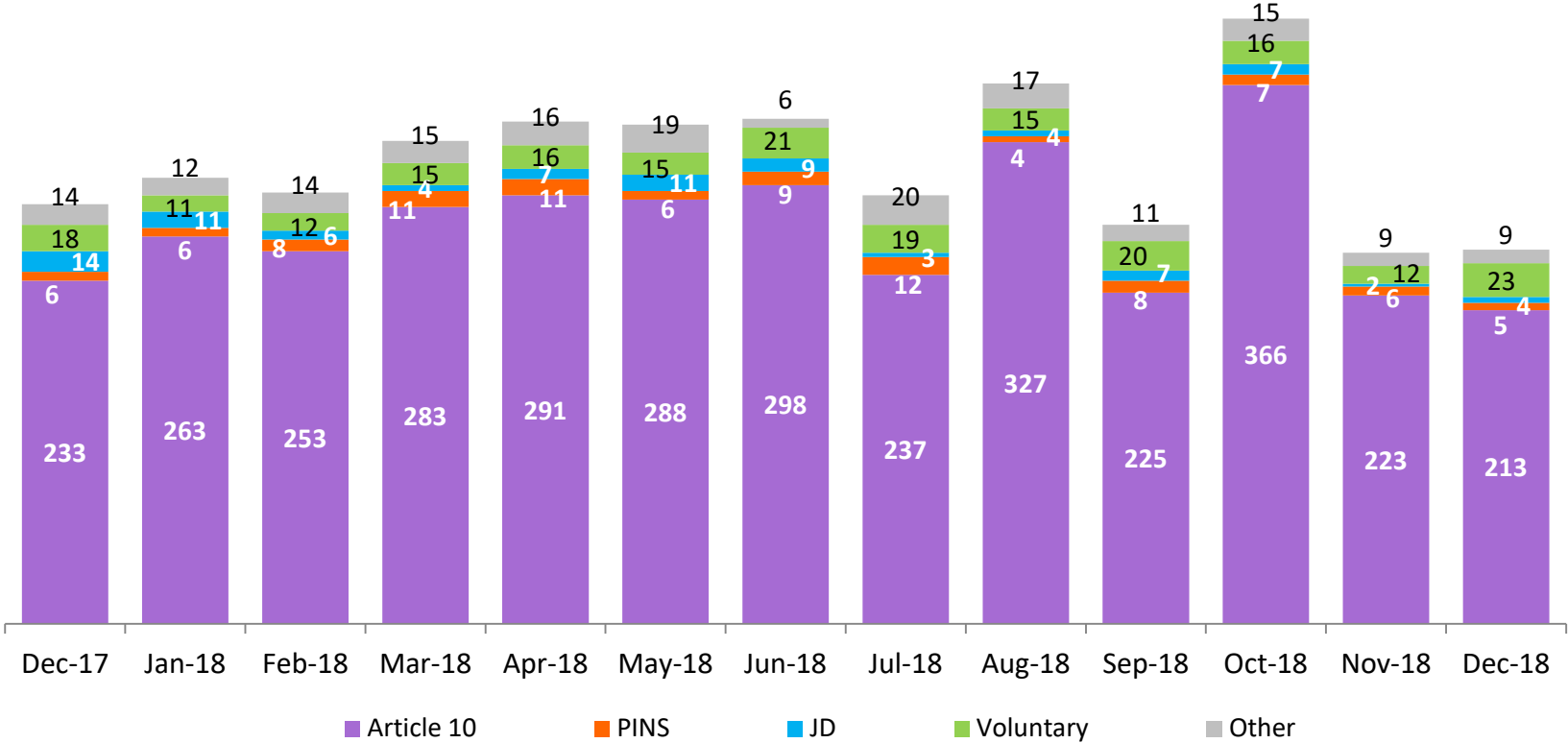
New Placements of Children into Foster Care

January 2015 – December 2018



Reason for New Placements of Children into Foster Care

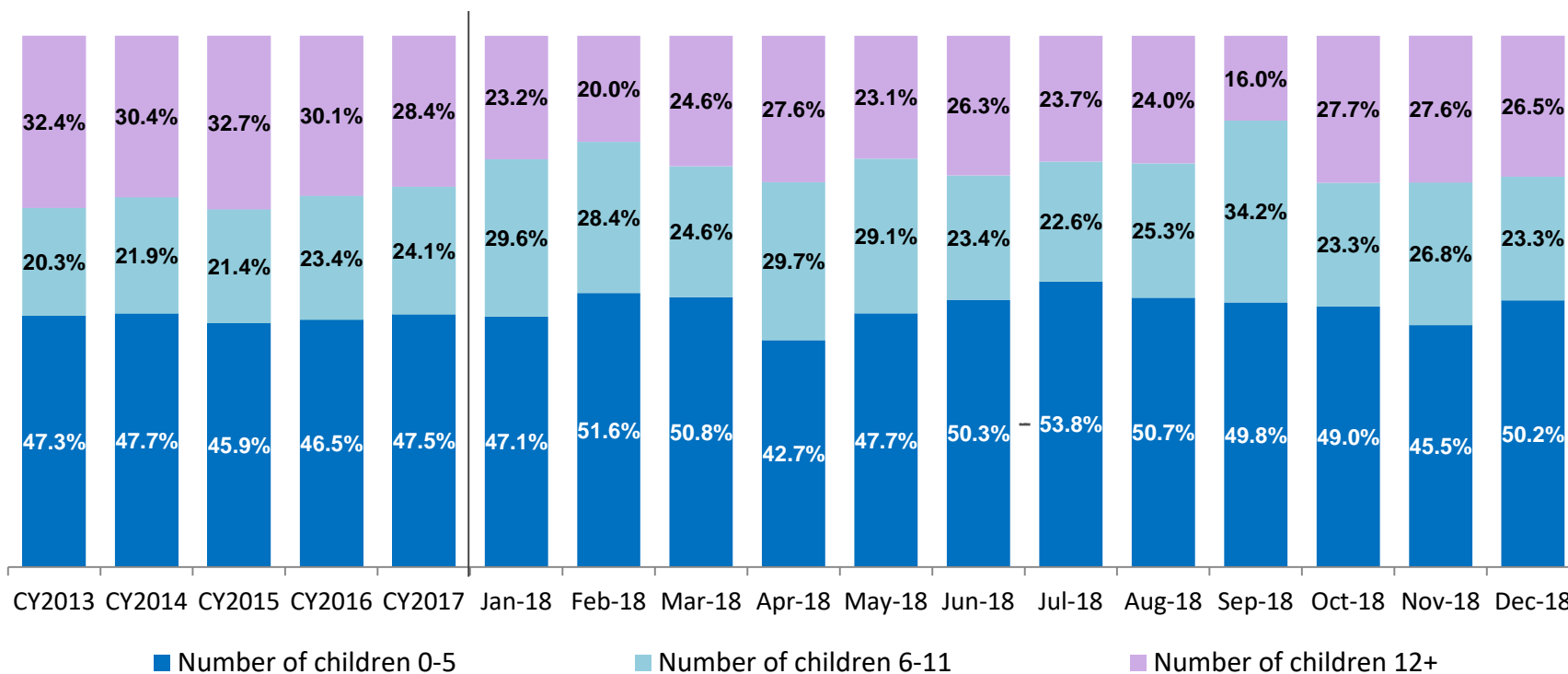
December 2017 – December 2018



	Dec 2017	Jan 2018	Feb 2018	Mar 2018	Apr 2018	May 2018	Jun 2018	Jul 2018	Aug 2018	Sep 2018	Oct 2018	Nov 2018	Dec 2018
Number of Placements	285	303	293	328	341	339	343	291	367	271	411	252	254

New Placements of Children into Foster Care* by Age

CY 2013 - December 2018

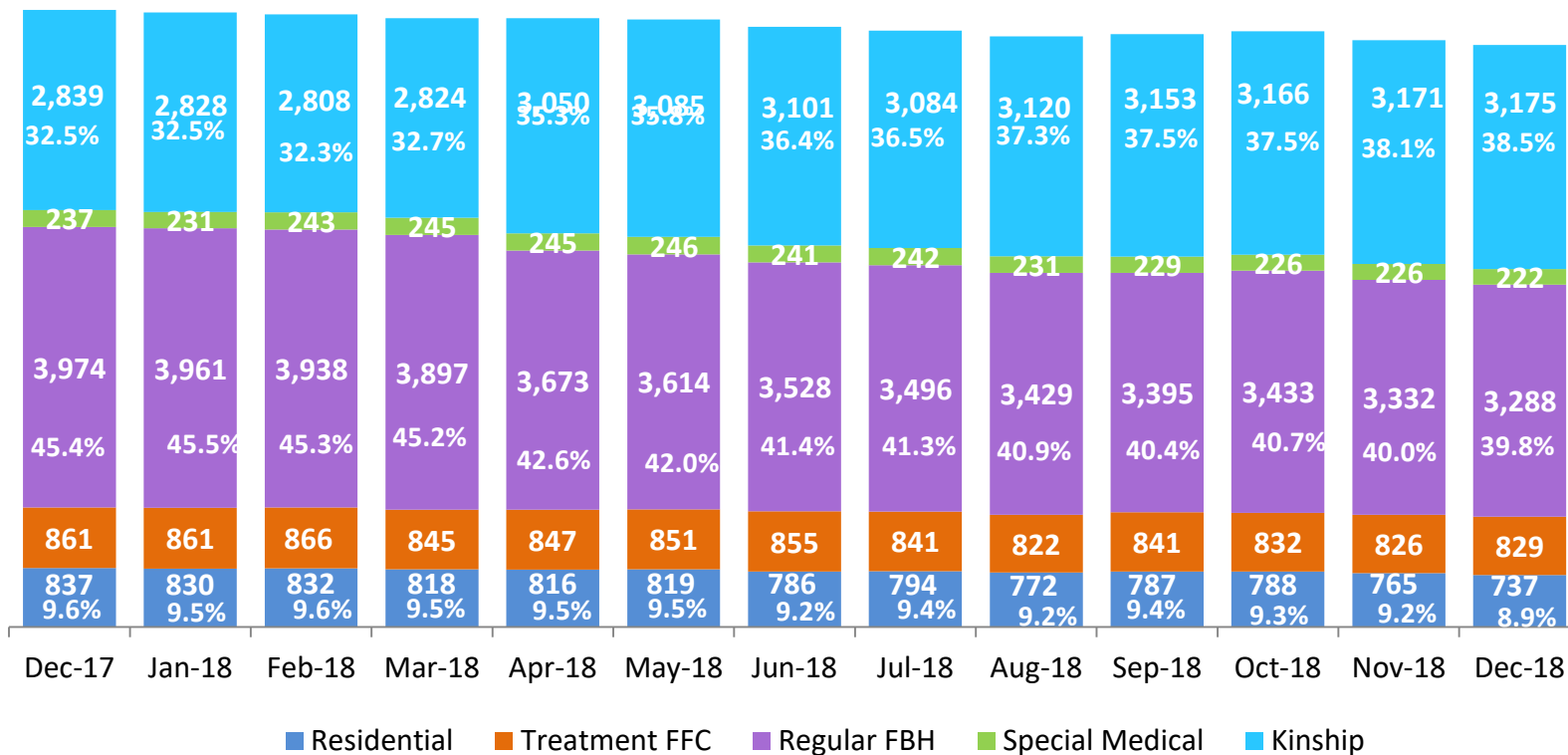


	CY 2013	CY 2014	CY 2015	CY 2016	CY 2017	Jan 2018	Feb 2018	Mar 2018	Apr 2018	May 2018	Jun 2018	Jul 2018	Aug 2018	Sep 2018	Oct 2018	Nov 2018	Dec 2018
Number of Placements	4,283	4,160	3,760	3,557	4,097	297	285	317	330	333	334	279	363	263	404	246	249

*Excludes CTH placements.

Children in Foster Care *

December 2017 – December 2018 (end of month)

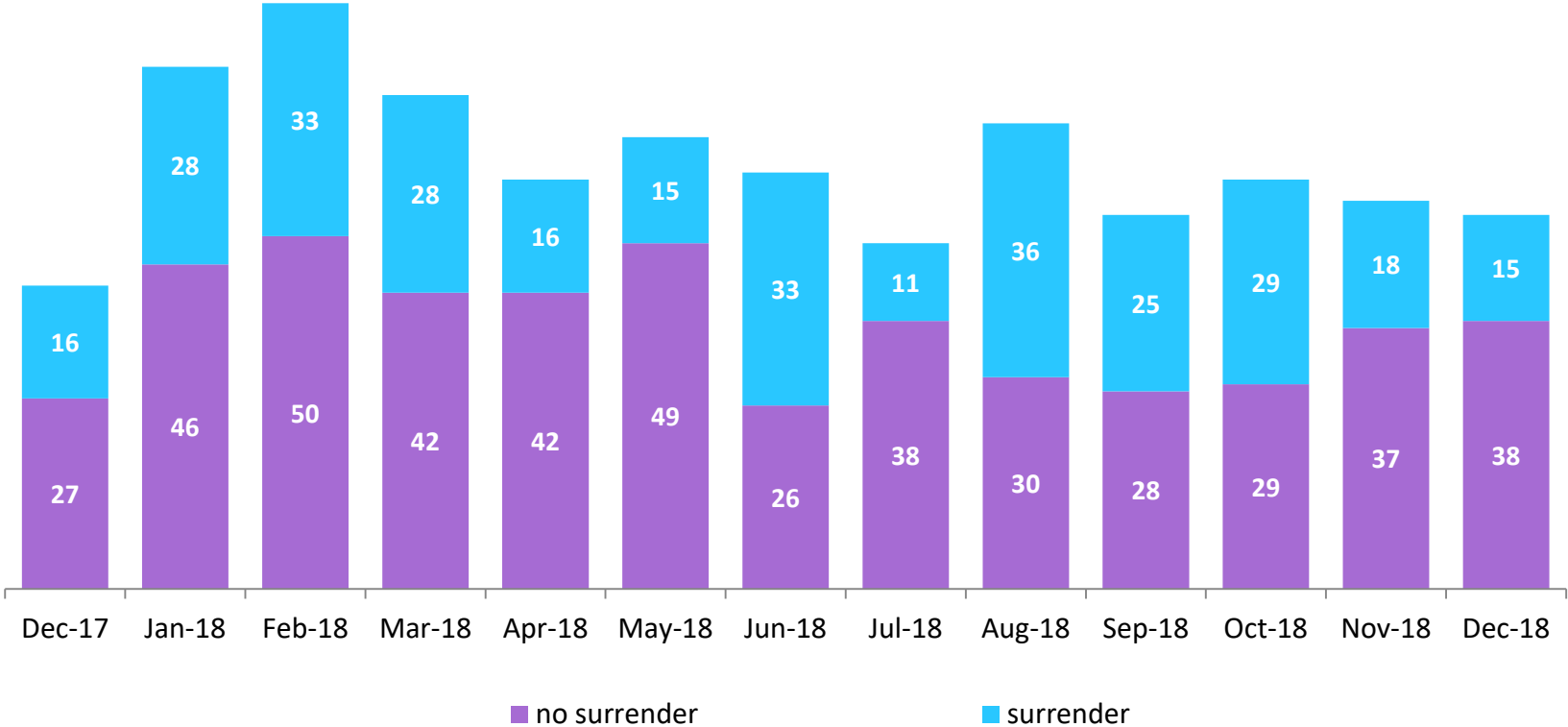


	Dec 2017	Jan 2018	Feb 2018	Mar 2018	Apr 2018	May 2018	Jun 2018	Jul 2018	Aug 2018	Sep 2018	Oct 2018	Nov 2018	Dec 2018
Number in Foster Care	8,747	8,711	8,687	8,629	8,631	8,615	8,512	8,458	8,374	8,406	8,444	8,320	8,251

*Excludes CTH placements and includes children in 24 hour care and approximately 200 young children who are living in foster homes or residential care facilities with their mothers who are in foster care (8D children).

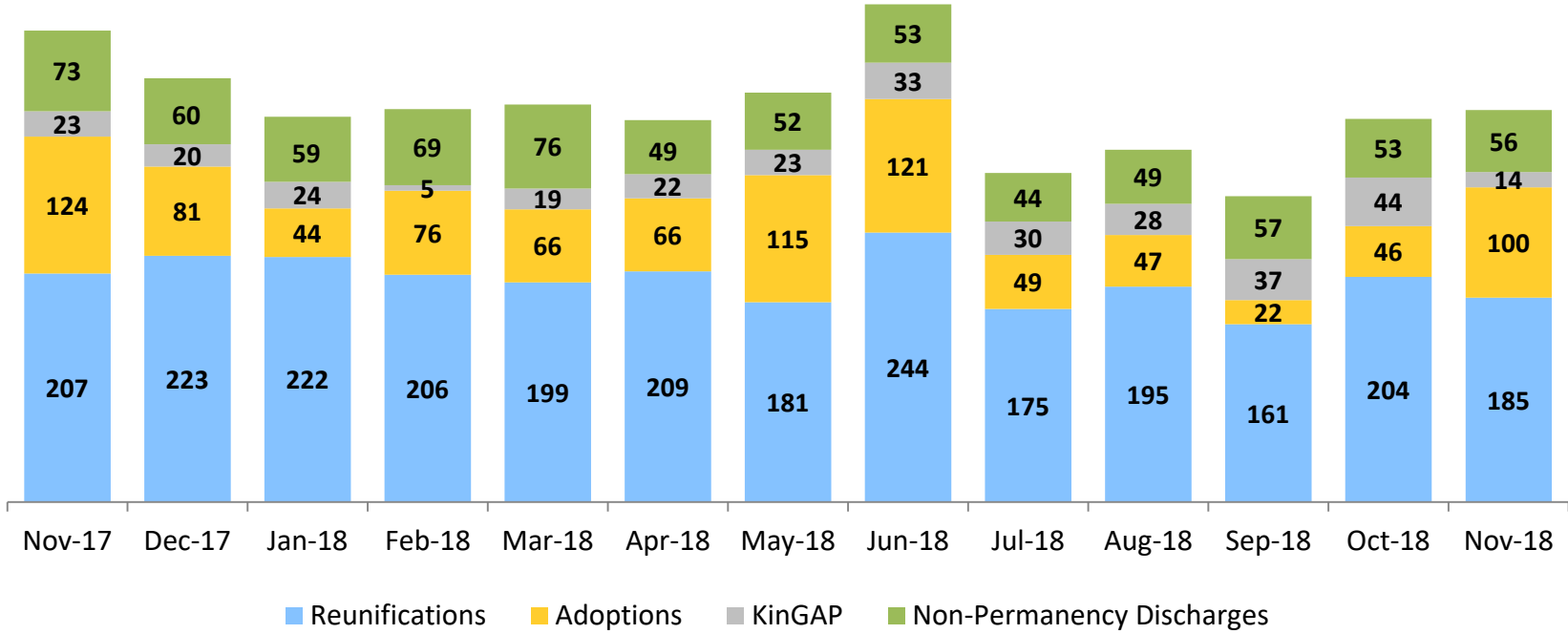
Children Freed for Adoption, Surrender by at Least One Parent

December 2017 – December 2018



	Dec 2017	Jan 2018	Feb 2018	Mar 2018	Apr 2018	May 2018	Jun 2018	Jul 2018	Aug 2018	Sep 2018	Oct 2018	Nov 2018	Dec 2018
Number Freed for Adoption	43	74	83	70	58	64	59	49	66	53	58	55	53

Permanency and Non-Permanency* Discharges from Foster Care** November 2017 – November 2018



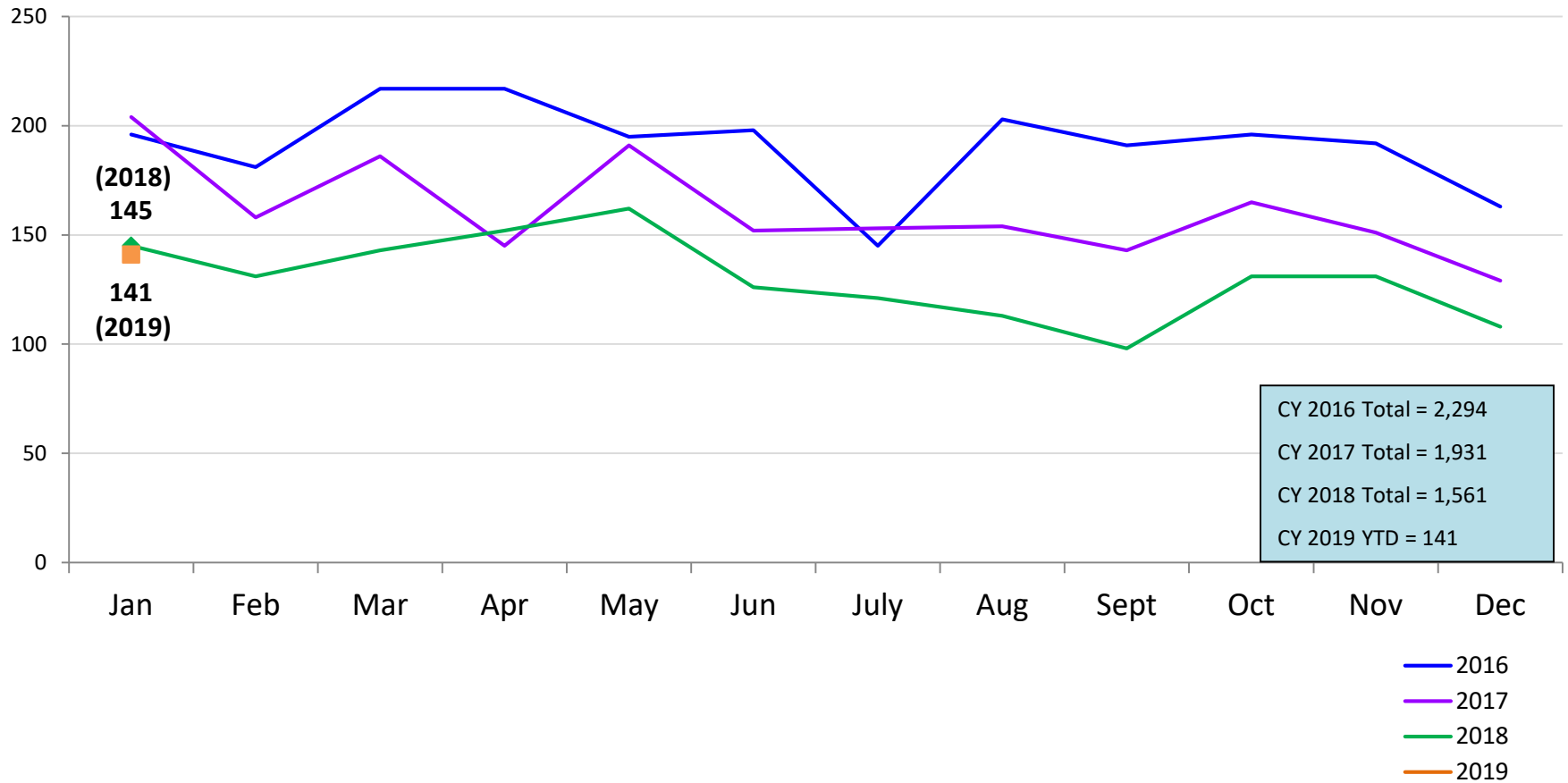
	Nov 2017	Dec 2017	Jan 2018	Feb 2018	Mar 2018	Apr 2018	May 2018	Jun 2018	Jul 2018	Aug 2018	Sep 2018	Oct 2018	Nov 2018
Number of Discharges	427	384	349	356	360	346	371	451	298	319	277	347	355

*The methodology for non-permanency discharges was changed September 2018. This statistic is not comparable to prior reports. Non-permanency discharges include AWOL, APPLA (youth 18-20 years old discharged to self and youth who reached 21 while in care), and other discharge destinations such as psychiatric institutions and correctional facilities and discharges with unspecified destinations.

**Excludes discharges of youth from CTH placements.

Total Monthly Admissions to Detention

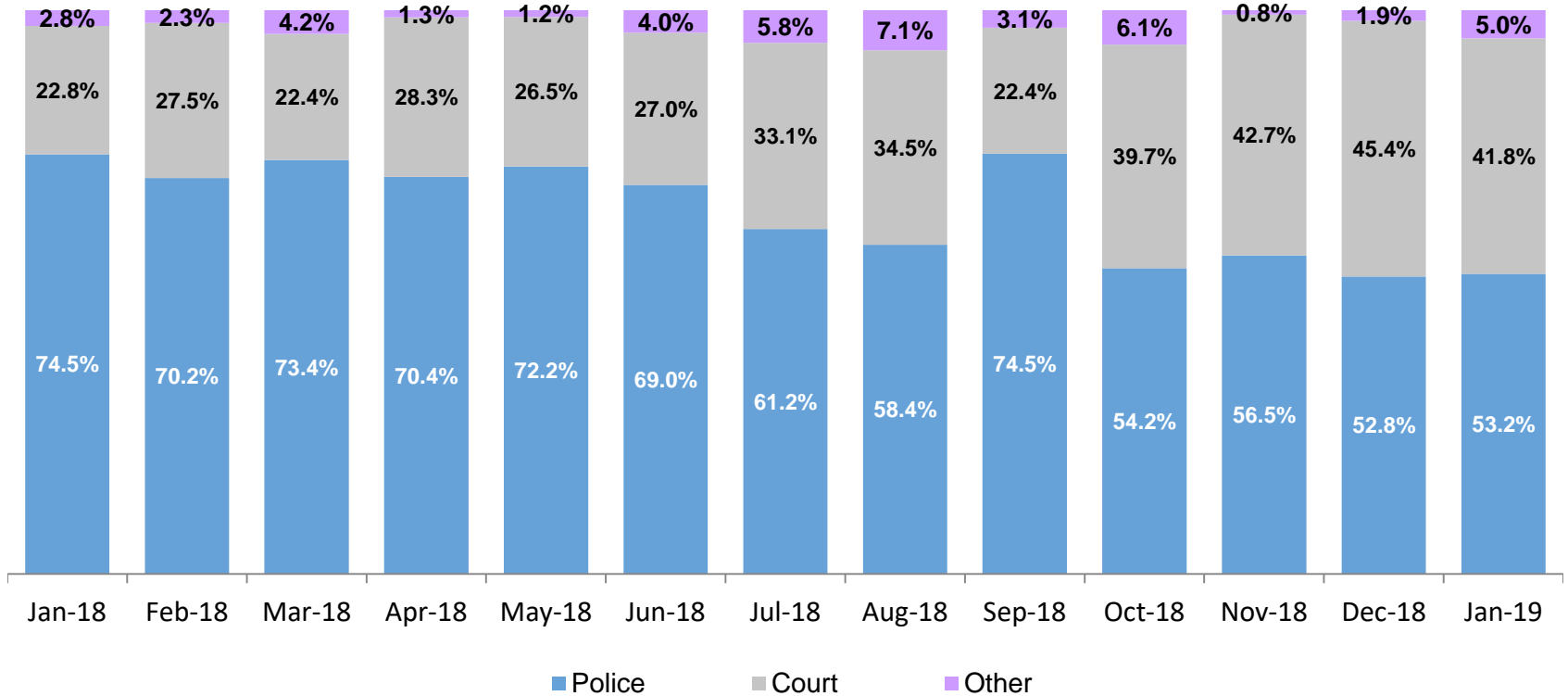
January 2016 – January 2019*



*Beginning in October 2018 admissions to Horizon Juvenile Facility are not included in the ACS detention statistics.

Admit Authority, Detention Admissions

January 2018 – January 2019*



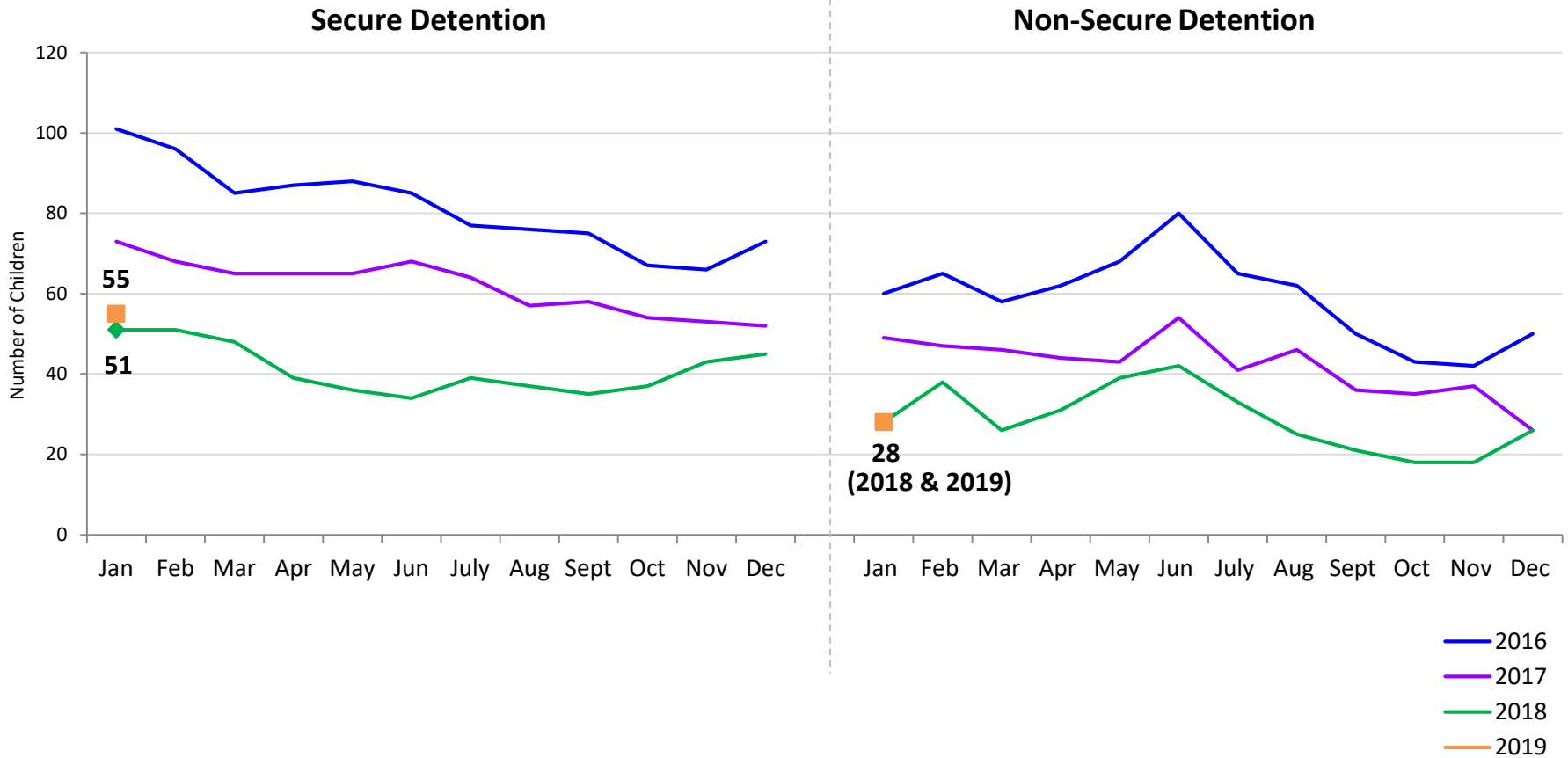
	Jan 2018	Feb 2018	Mar 2018	Apr 2018	May 2018	Jun 2018	Jul 2018	Aug 2018	Sep 2018	Oct 2018	Nov 2018	Dec 2018	Jan 2019
Number of Admissions	145	131	143	152	162	126	121	113	98	131	131	108	141

Note: Other Admit Authority includes the Sheriff Department, Department of Corrections and ACS.

*Beginning in October 2018 admissions to Horizon Juvenile Facility are not included in the ACS detention statistics.

Monthly Average Daily Population

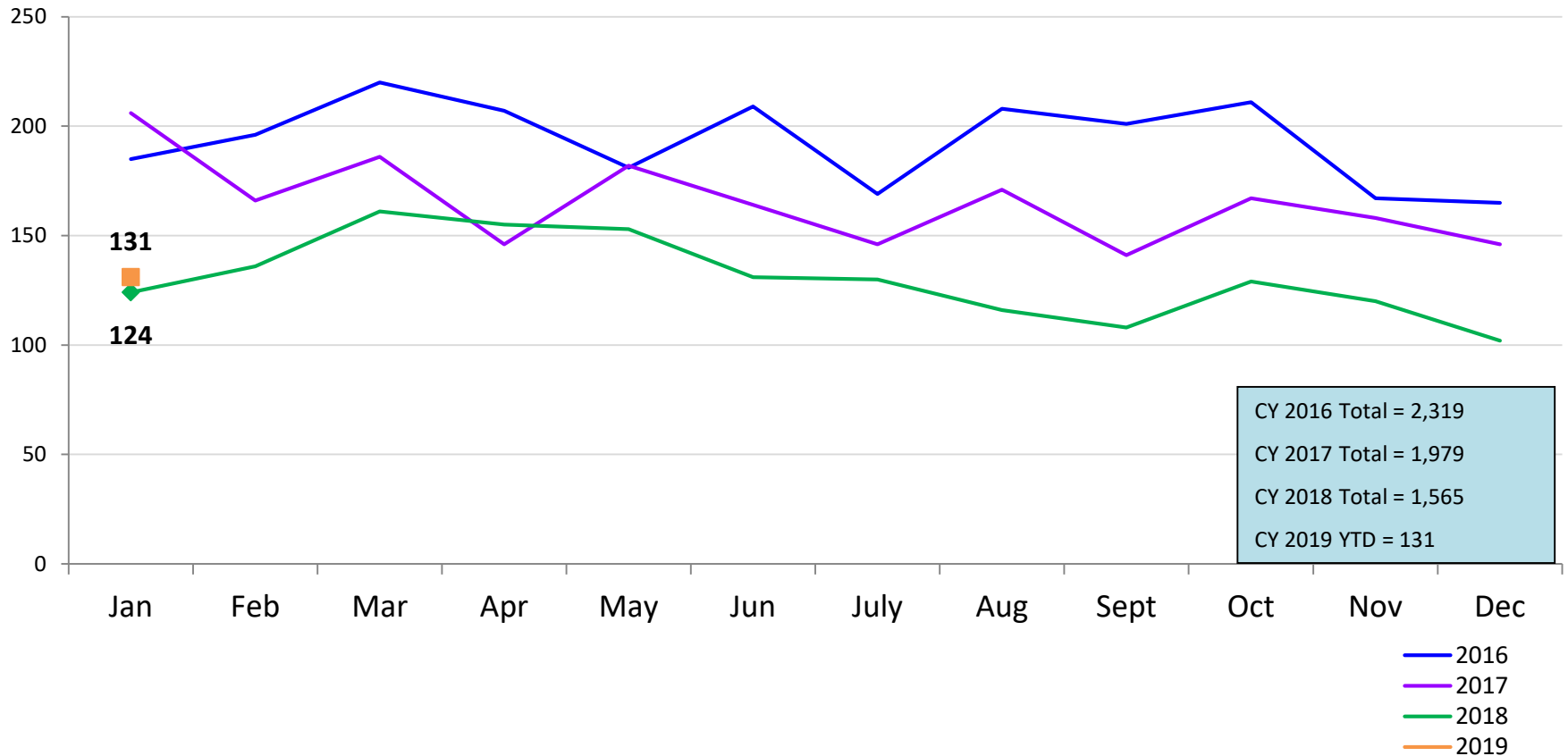
January 2016 – January 2019*



*Beginning in October 2018 youth in the Horizon Juvenile Facility are not included in the ACS detention statistics.

Total Monthly Releases from Detention

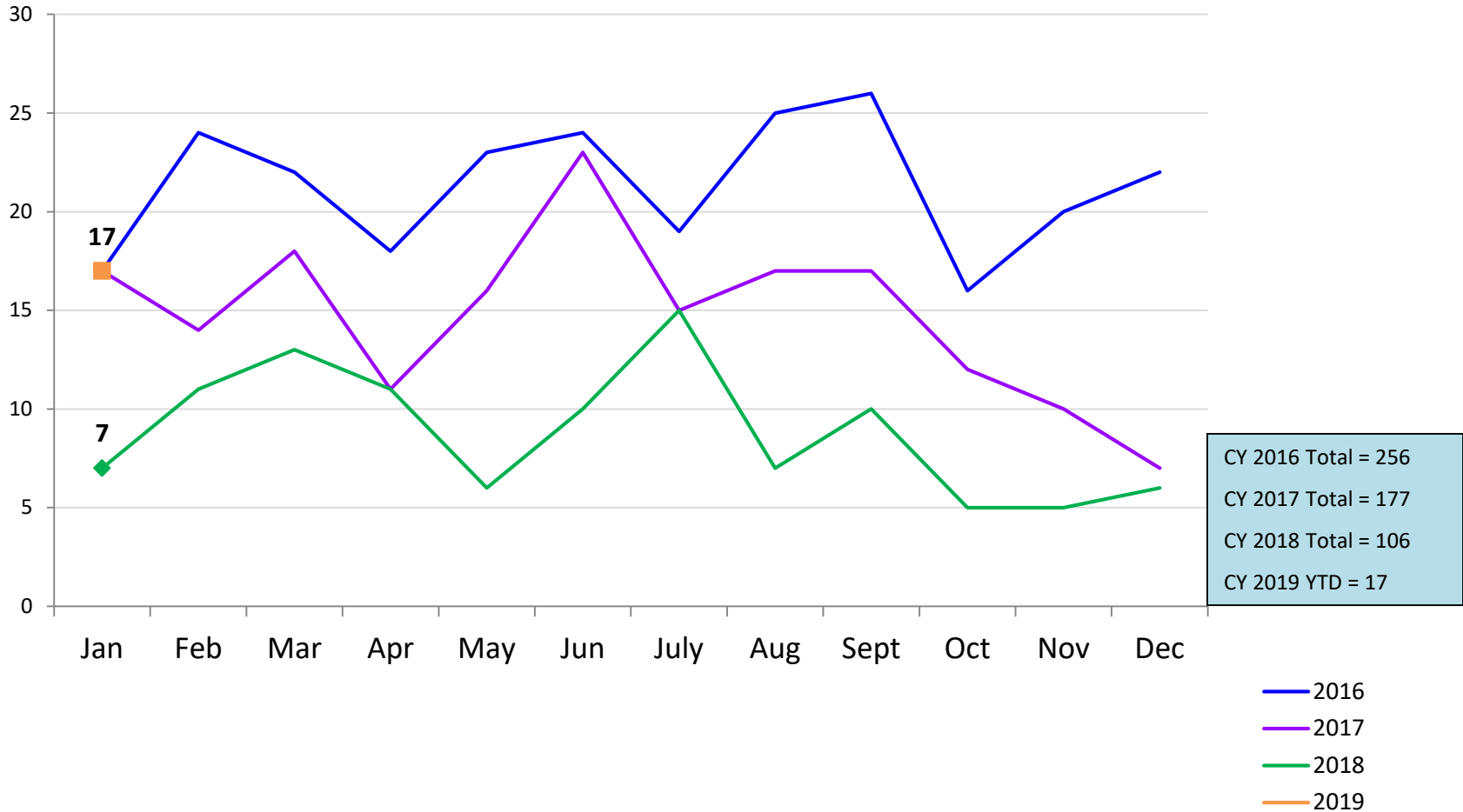
January 2016 – January 2019*



*Beginning in October 2018 releases from the Horizon Juvenile Facility are not included in the ACS detention statistics.

Close to Home Admissions*

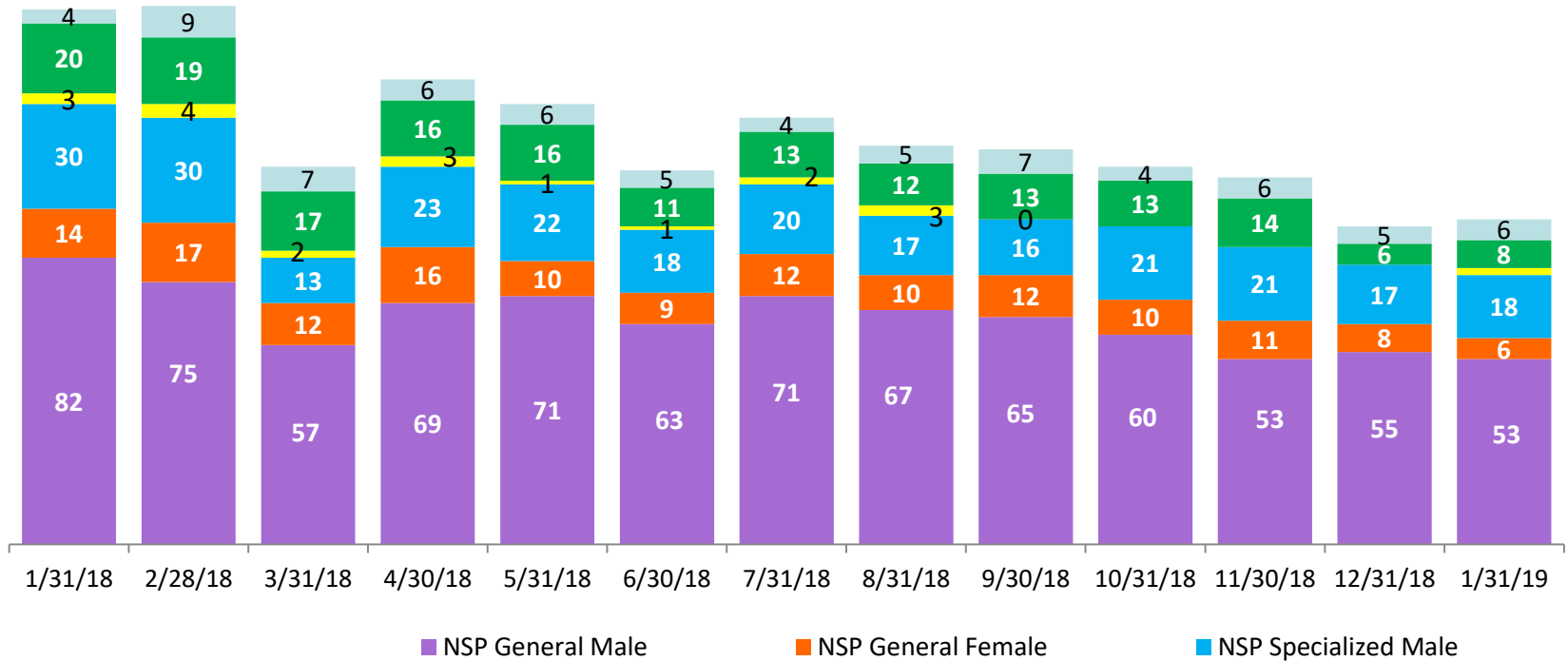
January 2016 – January 2019



*Beginning in December 2015 Close to Home admissions include LSP as well as NSP.

CTH Placement, in 24-hour Care

January 2018 – January 2019 (end of month)

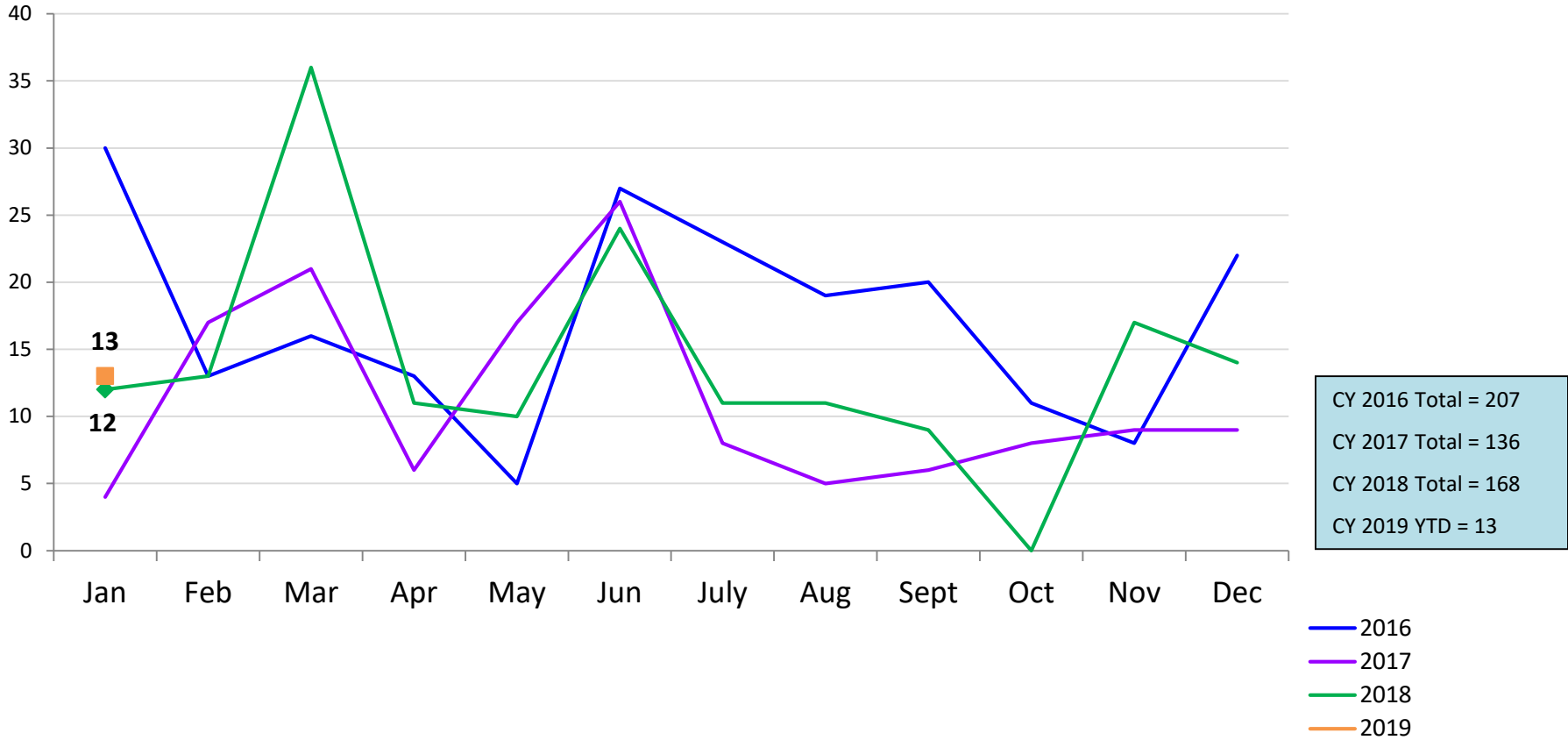


Number in Placement													
	1/31/18	2/28/18	3/31/18	4/30/18	5/31/18	6/30/18	7/31/18	8/31/18	9/30/18	10/31/18	11/30/18	12/31/18	1/31/19
NSP	129	126	84	111	104	91	105	97	93	91	85	80	79
LSP	24	28	24	22	22	16	17	17	20	17	20	11	14

*NSP Other includes youth in child welfare and mother/child placements.

Releases from Close to Home Placement to Aftercare

January 2016 – January 2019



Appendix

Figure 1: SCR Intakes by Borough, NOVEMBER 17 – JANUARY 18 and NOVEMBER 18 – JANUARY 19

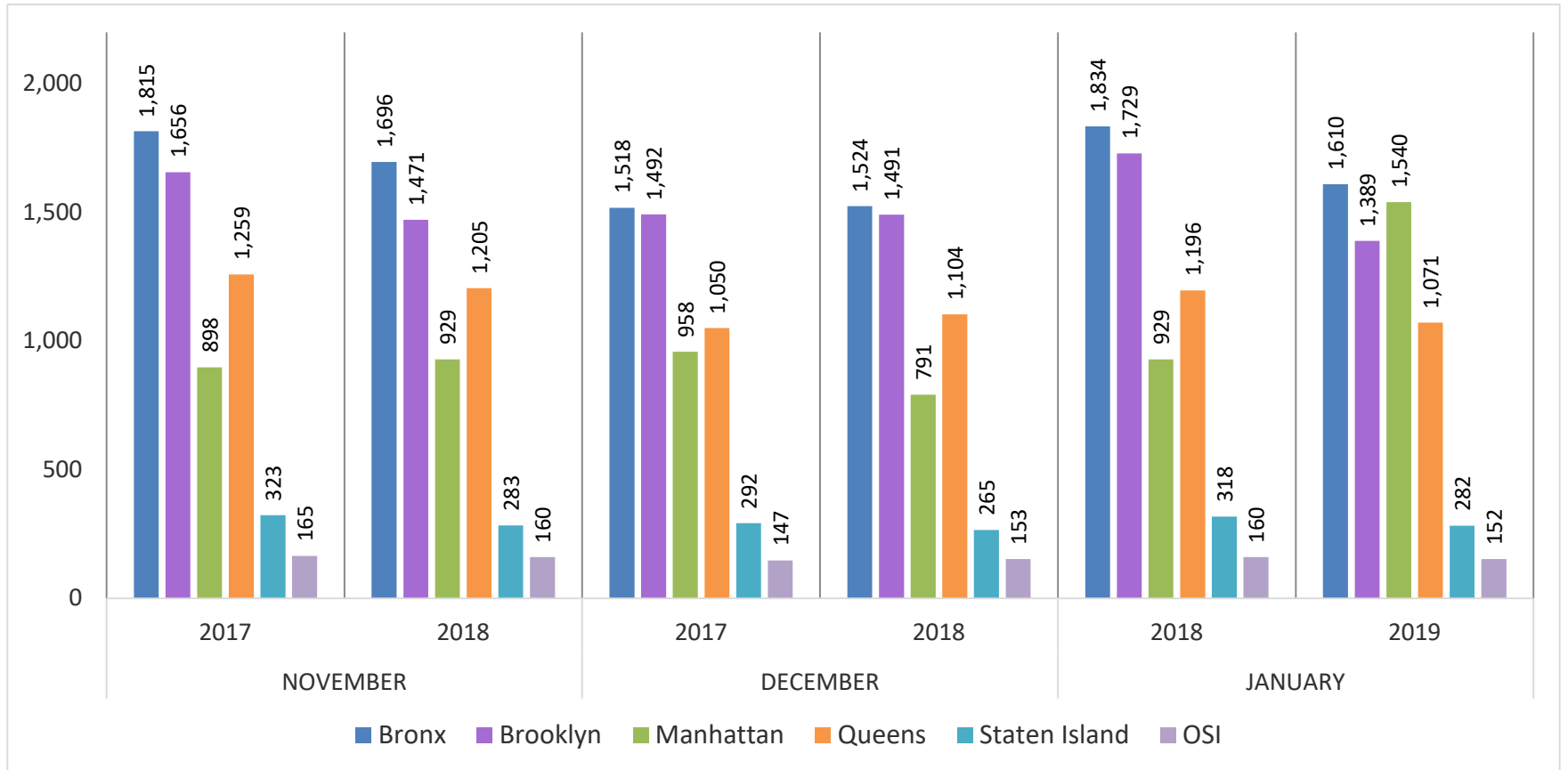


Table 1 - SCR Intake Changes by Borough, NOVEMBER 17 – JANUARY 18 and NOVEMBER 18 – JANUARY 19

Month	Year	Bronx	Brooklyn	Manhattan	Queens	Staten Island	OSI	Other	Total
NOVEMBER	2017	1,815	1,656	898	1,259	323	165	176	6,292
	2018	1,696	1,471	929	1,205	283	160	185	5,929
	% Change	-6.6%	-11.2%	3.5%	-4.3%	-12.4%	-3.0%	5.1%	-5.8%
DECEMBER	2017	1,518	1,492	958	1,050	292	147	178	5,635
	2018	1,524	1,491	791	1,104	265	153	179	5,507
	% Change	0.4%	-0.1%	-17.4%	5.1%	-9.2%	4.1%	0.6%	-2.3%
JANUARY	2018	1,834	1,729	929	1,196	318	160	200	6,366
	2019	1,610	1,389	1,540	1,071	282	152	187	6,231
	% Change	-12.2%	-19.7%	65.8%	-10.5%	-11.3%	-5.0%	-6.5%	-2.1%
Total	Nov17-Jan18	5,167	4,877	2,785	3,505	933	472	554	18,293
	Nov18-Jan19	4,830	4,351	3,260	3,380	830	465	551	17,667
	% Change	-6.5%	-10.8%	17.1%	-3.6%	-11.0%	-1.5%	-0.5%	-3.4%

Figure 2: Citywide SCR Intakes by Reporter Group, NOVEMBER 17 – JANUARY 18 and NOVEMBER 18 – JANUARY 19

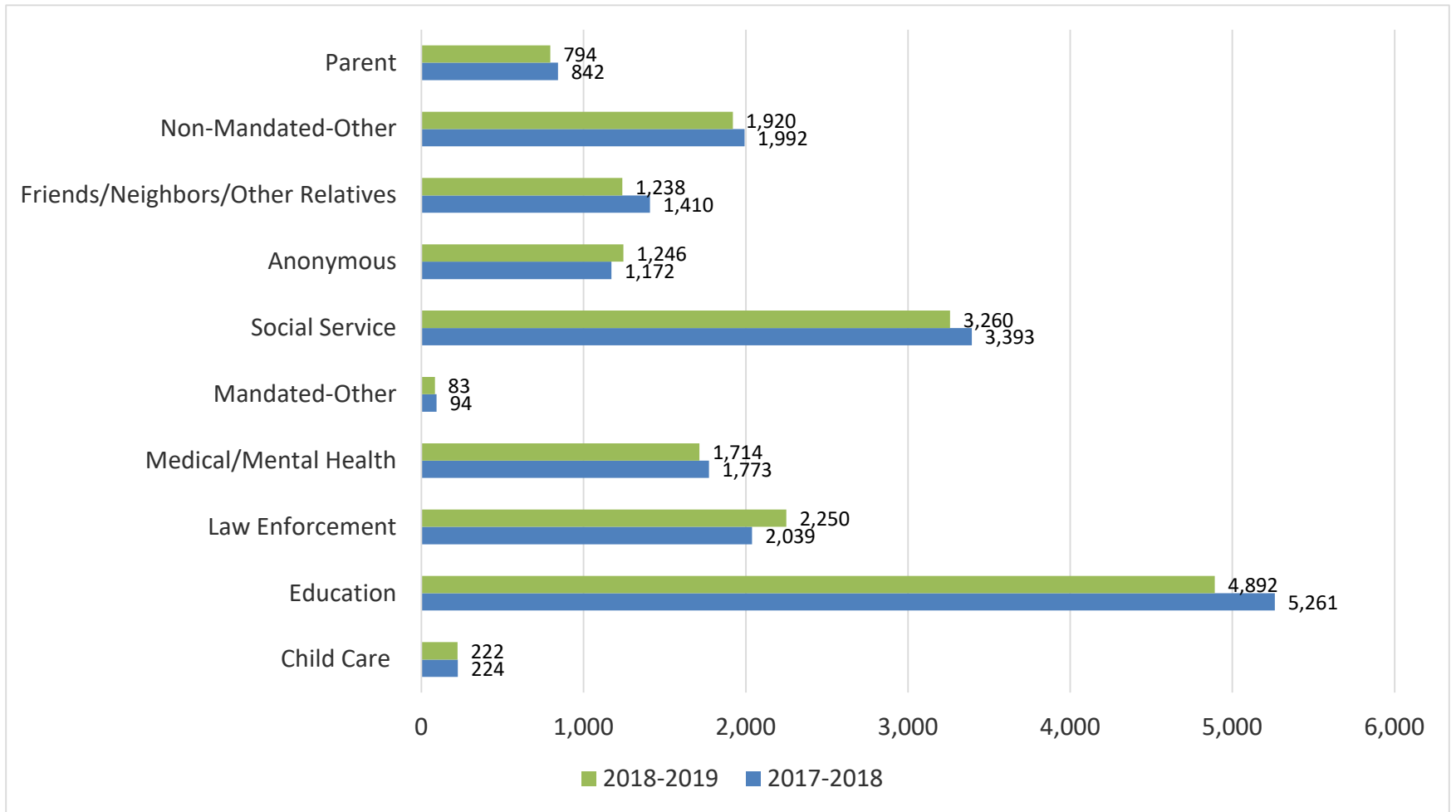
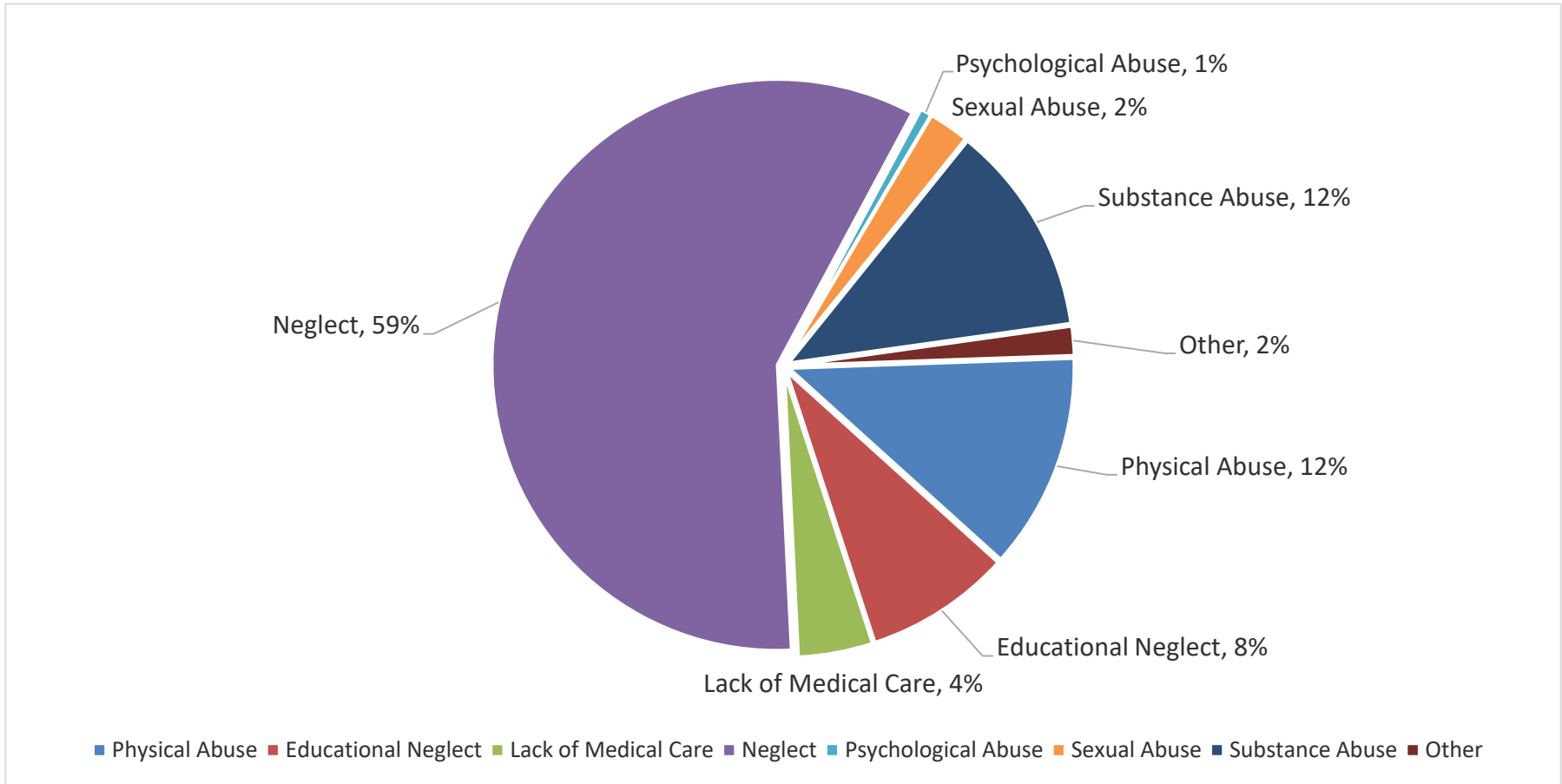


Table 2 - SCR Intakes by Reporter Group, NOVEMBER 17 – JANUARY 18 and NOVEMBER 18 – JANUARY 19

Year	Child Care/ Substitute Care Personnel	Educational Personnel	Law Enforcement	Medical/ Mental Health Personnel	Mandated- Other	Social Service Personnel	Anonymous	Friends/ Neighbors/ Other Relatives	Non- Mandated- Other	Parent	Foster Parent	*Total
Bronx												
2017-2018	56	1,651	497	514	21	971	317	406	525	207	1	5,167
2018-2019	46	1,481	471	445	23	978	337	322	538	188	1	4,830
% Change	-17.9%	-10.3%	-5.2%	-13.4%	9.5%	0.7%	6.3%	-20.7%	2.5%	-9.2%	0.0%	-6.5%
Brooklyn												
2017-2018	59	1,375	624	427	26	896	351	387	507	222	0	4,877
2018-2019	51	1,248	654	391	18	753	315	308	438	174	1	4,351
% Change	-13.6%	-9.2%	4.8%	-8.4%	-30.8%	-16.0%	-10.3%	-20.4%	-13.6%	-21.6%	--	-10.8%
Manhattan												
2017-2018	30	621	368	305	13	510	215	258	341	122	0	2,785
2018-2019	41	622	515	343	12	613	285	269	393	164	0	3,260
% Change	36.7%	0.2%	39.9%	12.5%	-7.7%	20.2%	32.6%	4.3%	15.2%	34.4%	--	17.1%
Queens												
2017-2018	40	1,204	343	343	16	639	190	223	371	134	1	3,505
2018-2019	33	1,156	395	340	18	571	189	218	324	135	0	3,380
% Change	-17.5%	-4.0%	15.2%	-0.9%	12.5%	-10.6%	-0.5%	-2.2%	-12.7%	0.7%	-100.0%	-3.6%
Staten Island												
2017-2018	14	313	89	90	6	154	61	72	94	39	0	933
2018-2019	11	295	76	81	2	128	69	66	74	28	0	830
% Change	-21.4%	-5.8%	-14.6%	-10.0%	-66.7%	-16.9%	13.1%	-8.3%	-21.3%	-28.2%	--	-11.0%
OSI												
2017-2018	19	48	22	35	12	100	22	29	110	72	3	472
2018-2019	31	49	19	54	7	71	24	28	106	74	2	465
% Change	63.2%	2.1%	-13.6%	54.3%	-41.7%	-29.0%	9.1%	-3.4%	-3.6%	2.8%	-33.3%	-1.5%
Other												
2017-2018	6	49	96	59	0	123	16	35	44	46	0	554
2018-2019	9	41	120	60	3	146	27	27	47	31	0	551
% Change	50.0%	-16.3%	25.0%	1.7%	--	18.7%	68.8%	-22.9%	6.8%	-32.6%	--	-0.5%
Citywide												
2017-2018	224	5,261	2,039	1,773	94	3,393	1,172	1,410	1,992	842	5	18,293
2018-2019	222	4,892	2,250	1,714	83	3,260	1,246	1,238	1,920	794	4	17,667
% Change	-0.9%	-7.0%	10.3%	-3.3%	-11.7%	-3.9%	6.3%	-12.2%	-3.6%	-5.7%	-20.0%	-3.4%

*There is a small number of intakes with unknown reporter that is included in the totals.

Figure 3: SCR Allegations, NOVEMBER 18 – JANUARY 19



Total Allegations = 42,163

Allegations are grouped as follows: Physical Abuse - burn, fatality, fracture, choking, twisting, shaking, excessive corporal punishment, internal injuries, lacerations, bruises, welts, poisoning, noxious substances; Educational Neglect – educational neglect; Lack of Medical Care – lack of medical care; Neglect - inadequate guardianship, inadequate food, clothing, shelter, lack of supervision, malnutrition, failure to thrive, swelling, dislocations, sprains; Psychological Abuse - isolation, emotional neglect; Sexual Abuse – sexual abuse; Substance Abuse - parental drug use, child drug use; and Other - abandonment, inappropriate custodial conduct.

Table 3 - SCR Allegations, NOVEMBER 17 – JANUARY 18 and NOVEMBER 18 – JANUARY 19

Year	Physical Abuse	Educational Neglect	Lack of Medical Care	Neglect	Psychological Abuse	Sexual Abuse	Substance Abuse	Other	Total
Bronx									
2017-2018	1,419	1,477	674	7,779	77	252	1,610	92	13,380
2018-2019	1,407	1,361	586	7,340	80	294	1,592	102	12,762
% Change	-0.8%	-7.9%	-13.1%	-5.6%	3.9%	16.7%	-1.1%	10.9%	-4.6%
Brooklyn									
2017-2018	1,441	942	527	7,409	88	283	1,523	144	12,357
2018-2019	1,311	874	432	6,222	67	237	1,264	204	10,611
% Change	-9.0%	-7.2%	-18.0%	-16.0%	-23.9%	-16.3%	-17.0%	41.7%	-14.1%
Manhattan									
2017-2018	655	470	249	3305	40	79	750	41	5,589
2018-2019	588	438	217	3140	34	113	708	75	5,313
% Change	-10.2%	-6.8%	-12.9%	-5.0%	-15.0%	43.0%	-5.6%	82.9%	-4.9%
Queens									
2017-2018	1,124	564	389	4,811	82	164	933	206	8,273
2018-2019	1,157	536	332	4,705	59	175	855	195	8,014
% Change	2.9%	-5.0%	-14.7%	-2.2%	-28.0%	6.7%	-8.4%	-5.3%	-3.1%
Staten Island									
2017-2018	267	235	167	1,543	20	42	363	75	2,712
2018-2019	275	198	113	1,477	12	35	326	33	2,469
% Change	3.0%	-15.7%	-32.3%	-4.3%	-40.0%	-16.7%	-10.2%	-56.0%	-9.0%
OSI									
2017-2018	260	50	62	1,191	12	96	154	5	1,830
2018-2019	263	41	64	1,163	10	77	162	3	1,783
% Change	1.2%	-18.0%	3.2%	-2.4%	-16.7%	-19.8%	5.2%	-40.0%	-2.6%
Other									
2017-2018	120	55	53	599	15	43	139	82	1,106
2018-2019	162	51	39	664	14	44	146	91	1,211
% Change	35.0%	-7.3%	-26.4%	10.9%	-6.7%	2.3%	5.0%	11.0%	9.5%
Citywide									
2017-2018	5,286	3,793	2,121	26,637	334	959	5,472	645	45,247
2018-2019	5,163	3,499	1,783	24,711	276	975	5,053	703	42,163
% Change	-2.3%	-7.8%	-15.9%	-7.2%	-17.4%	1.7%	-7.7%	9.0%	-6.8%

**TABLE 4 - Child Welfare Prevention Cases
New and Closed
January 2016 - January 2019**

Month	New Cases	Closed Cases
2016		
Jan-16	797	770
Feb-16	900	795
Mar-16	1,029	978
Apr-16	835	892
May-16	890	966
Jun-16	996	935
Jul-16	842	1,069
Aug-16	897	1,006
Sep-16	820	850
Oct-16	776	627
Nov-16	728	490
Dec-16	816	462
2017		
Jan-17	550	449
Feb-17	602	920
Mar-17	864	1,032
Apr-17	645	780
May-17	790	925
Jun-17	908	944
Jul-17	765	852
Aug-17	875	864
Sep-17	841	747
Oct-17	870	762
Nov-17	778	737
Dec-17	817	728
2018		
Jan-18	724	567
Feb-18	776	783
Mar-18	879	776
Apr-18	792	613
May-18	755	857
Jun-18	736	837
Jul-18	808	856
Aug-18	892	954
Sep-18	751	755
Oct-18	856	767
Nov-18	787	699
Dec-18	844	718
2019		
Jan-19	844	710

**Table 5 - Referrals to Child Welfare Prevention Services by Source
January 2016 - January 2019**

Month	Total Referrals	Division of Child Protection	Foster Care Agencies	PPRS Transfer	School	Self	Other Sources*
2016							
Jan-16	1,370	73.6%	1.6%	8.2%	0.7%	5.4%	10.6%
Feb-16	1,436	75.8%	2.2%	7.8%	1.0%	3.8%	9.3%
Mar-16	1,557	72.0%	2.1%	8.8%	1.0%	4.6%	11.4%
Apr-16	1,378	76.1%	1.5%	7.4%	1.5%	3.5%	10.0%
May-16	1,386	73.4%	1.4%	8.7%	1.0%	4.7%	10.8%
Jun-16	1,564	77.2%	2.4%	6.2%	1.5%	4.1%	8.6%
Jul-16	1,338	80.3%	1.7%	6.4%	1.0%	4.2%	6.4%
Aug-16	1,385	79.1%	1.8%	7.1%	0.4%	4.0%	7.6%
Sep-16	1,297	77.8%	2.1%	7.5%	0.8%	4.5%	7.4%
Oct-16	1,247	70.1%	2.0%	7.6%	1.5%	5.9%	12.9%
Nov-16	1,229	67.8%	2.0%	7.8%	1.2%	5.5%	15.8%
Dec-16	1,175	76.0%	1.5%	7.1%	1.3%	3.8%	10.3%
2017							
Jan-17	1,046	78.5%	1.4%	6.7%	0.7%	3.1%	9.7%
Feb-17	1,067	77.7%	0.8%	6.7%	0.8%	3.8%	10.1%
Mar-17	1,383	79.1%	0.6%	6.9%	0.9%	4.0%	8.5%
Apr-17	1,116	81.2%	1.0%	5.9%	1.1%	1.4%	9.4%
May-17	1,335	81.9%	0.9%	5.5%	1.3%	2.8%	7.6%
Jun-17	1,449	82.3%	0.8%	5.9%	1.2%	2.9%	6.9%
Jul-17	1,273	83.3%	0.9%	7.9%	0.7%	1.9%	5.3%
Aug-17	1,429	82.7%	0.6%	9.3%	0.3%	1.7%	5.2%
Sep-17	1,383	79.6%	1.6%	7.7%	0.8%	2.8%	7.4%
Oct-17	1,489	77.5%	1.5%	7.5%	1.0%	3.1%	9.4%
Nov-17	1,235	75.1%	1.5%	8.8%	2.2%	3.6%	8.8%
Dec-17	1,227	70.5%	1.6%	10.2%	2.4%	3.7%	11.5%
2018							
Jan-18	1,399	74.5%	1.5%	10.7%	1.4%	2.9%	9.0%
Feb-18	1,302	76.8%	1.5%	7.5%	1.3%	3.5%	9.4%
Mar-18	1,396	79.7%	1.5%	7.4%	1.2%	2.6%	7.5%
Apr-18	1,383	80.0%	1.2%	5.9%	1.1%	3.1%	8.7%
May-18	1,189	78.8%	1.3%	7.0%	1.0%	3.3%	8.7%
Jun-18	1,284	81.9%	0.5%	7.6%	0.9%	3.2%	6.0%
Jul-18	1,403	82.5%	0.7%	8.3%	0.6%	2.4%	5.5%
Aug-18	1,391	82.1%	1.7%	6.8%	0.4%	2.7%	6.3%
Sep-18	1,135	84.4%	1.5%	7.0%	0.9%	4.1%	2.1%
Oct-18	1,345	78.4%	1.5%	8.0%	1.2%	3.9%	7.0%
Nov-18	1,107	73.8%	1.4%	9.5%	1.5%	4.3%	9.5%
Dec-18	1,178	68.8%	1.7%	10.9%	2.7%	5.0%	11.0%
2019							
Jan-19	1,374	76.6%	1.5%	8.6%	1.2%	2.6%	9.5%

*Other Community Sources includes the Department of Homeless Services, Family Court, FAP, Hospitals and Medical facilities, the NYC Housing Authority, Probation, and Sponsor Agencies.