

FLASH

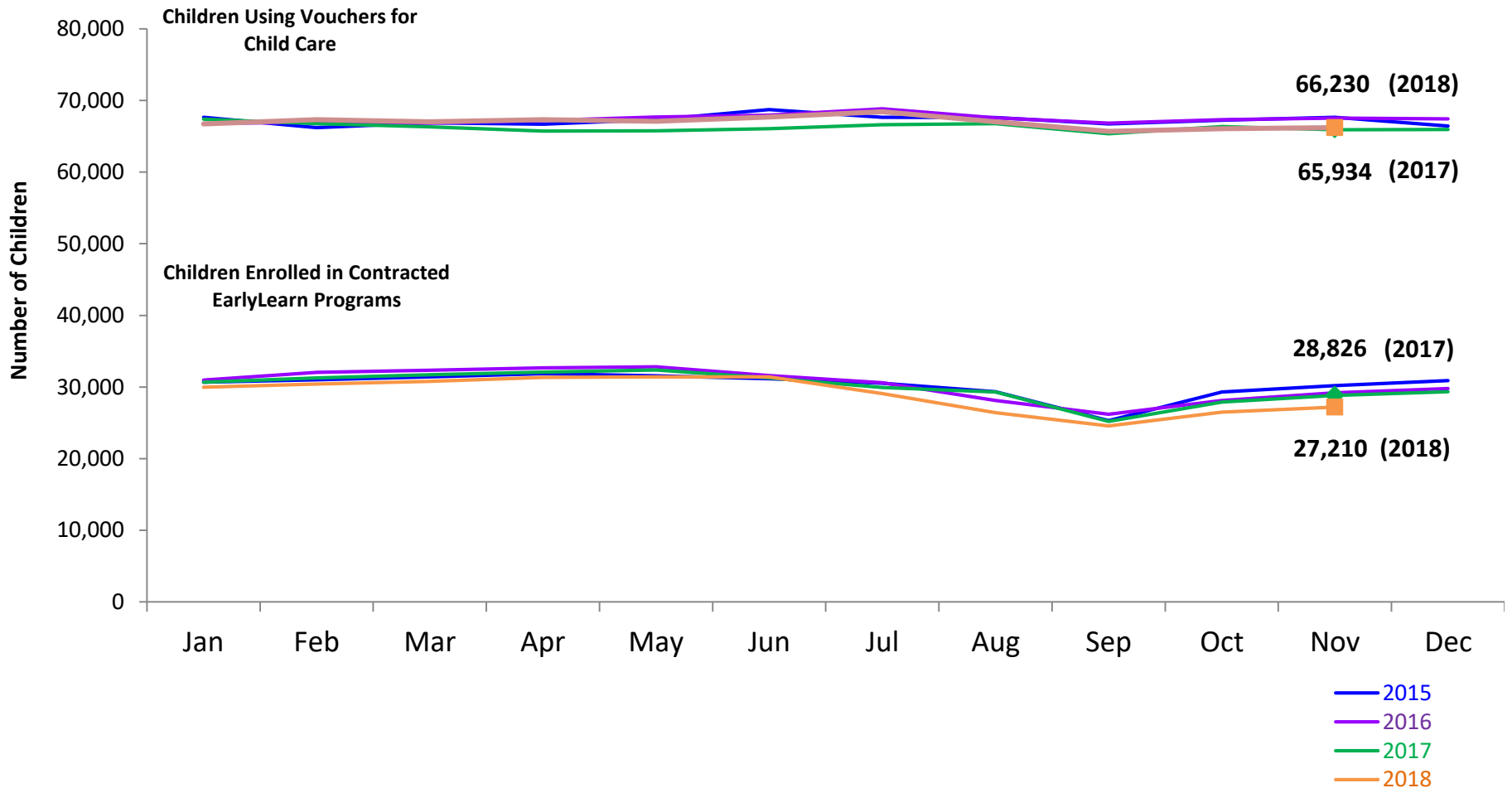
monthly indicator

REPORT

December 2018

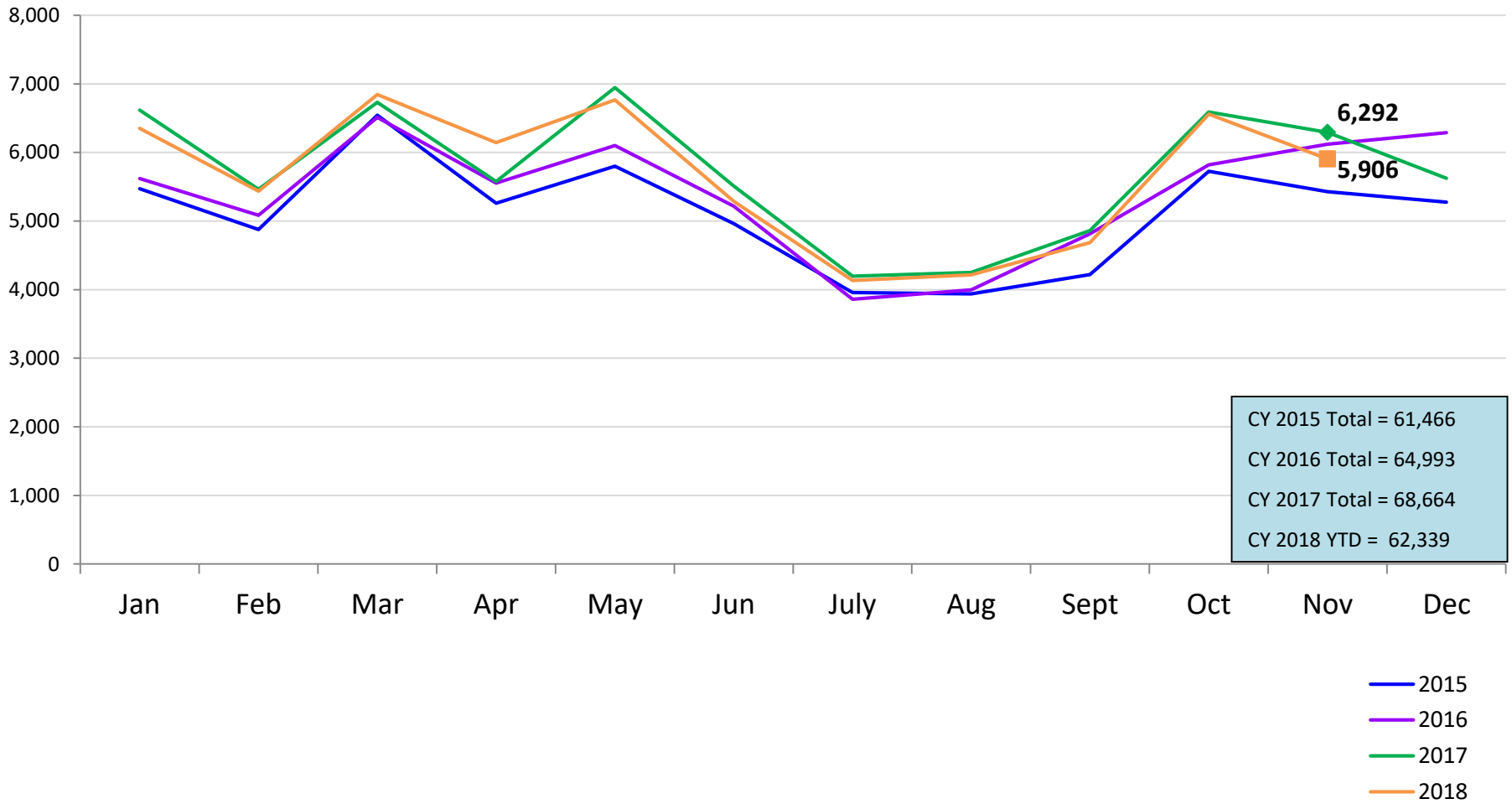
Children Enrolled in Contracted EarlyLearn Programs and Children Using Vouchers for Child Care

January 2015 – November 2018 (End of Month)



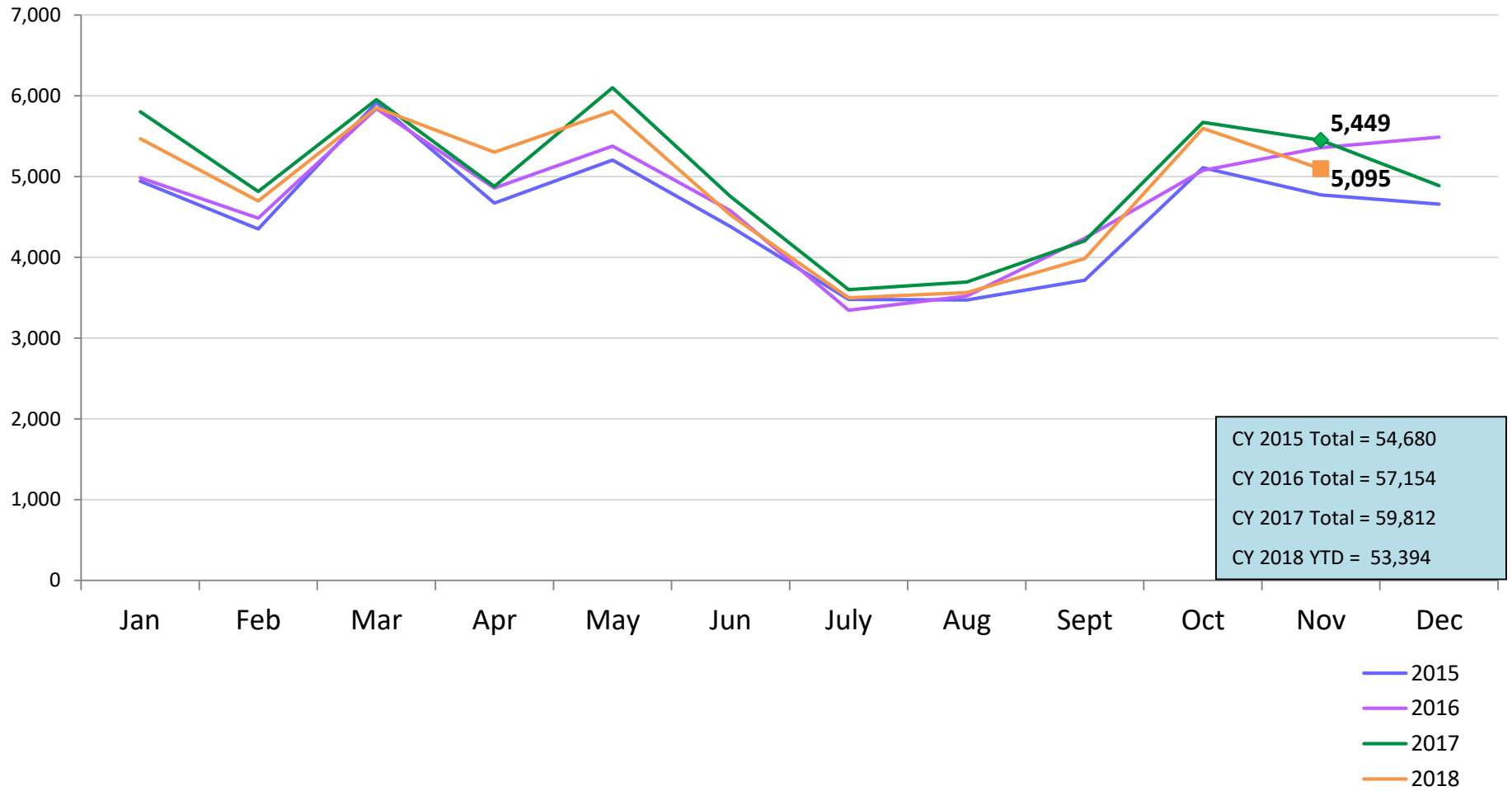
SCR Intakes

January 2015 – November 2018

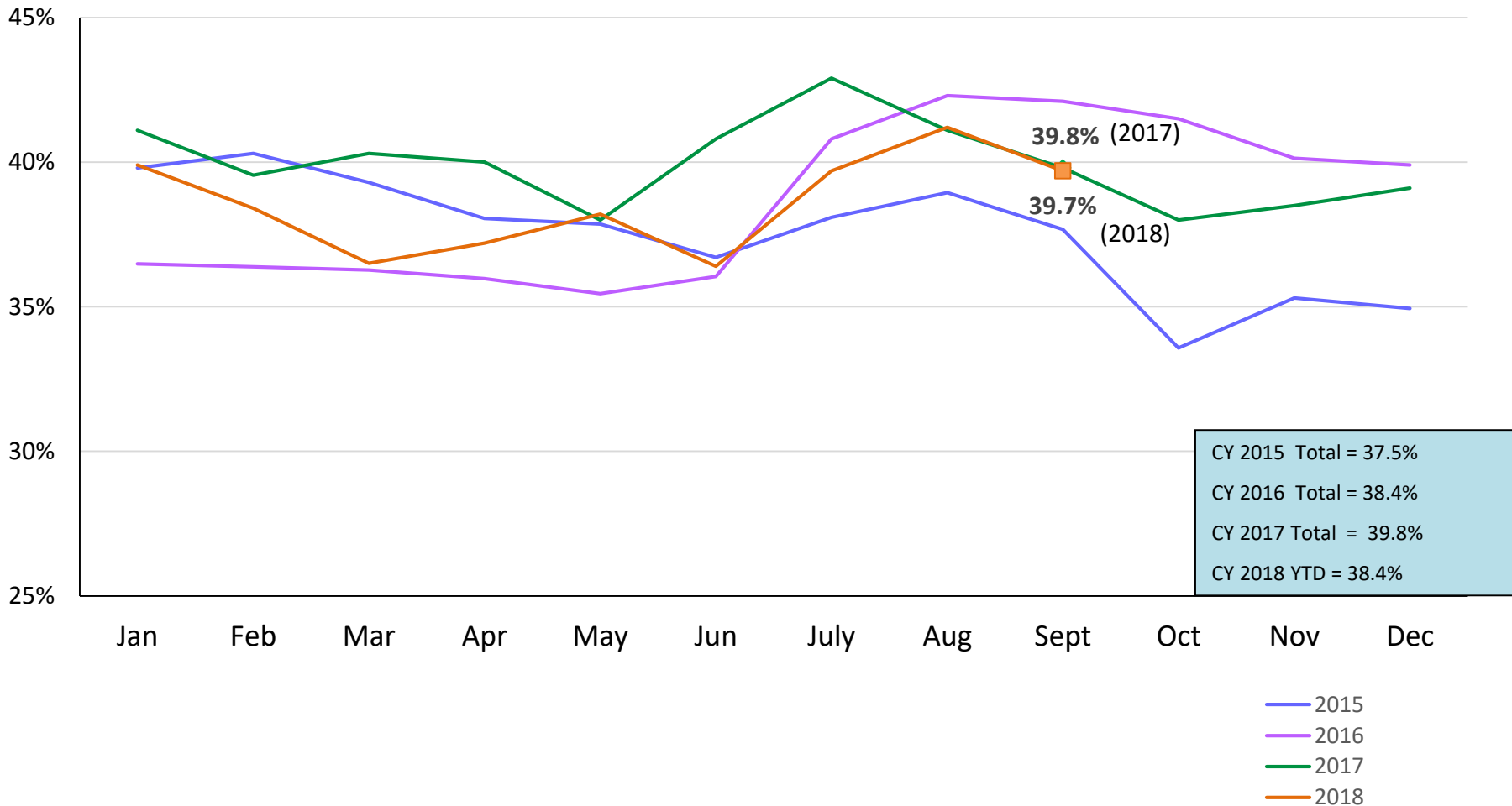


SCR Consolidated Investigations

January 2015 – November 2018

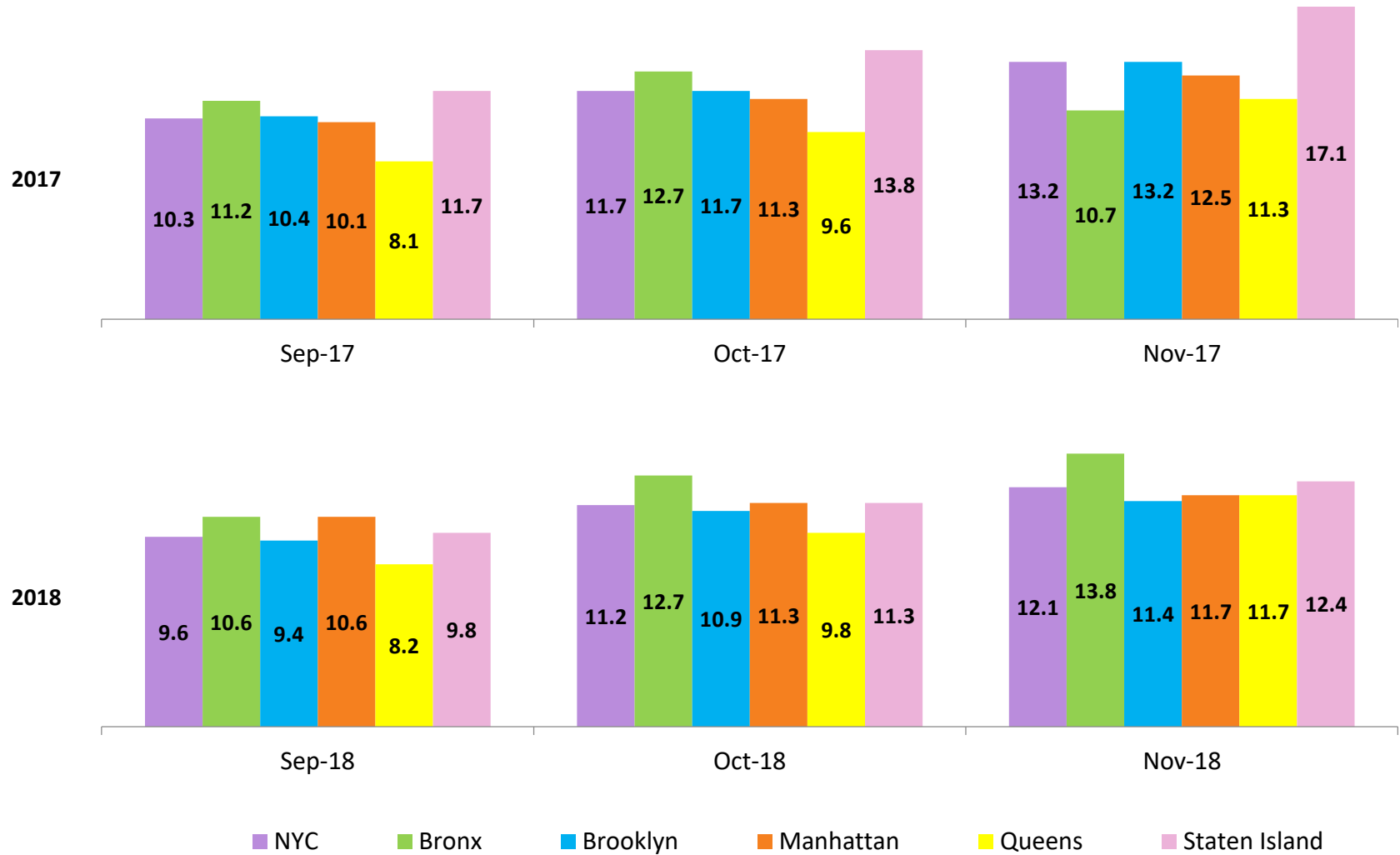


Percent of Investigations that Found Some Credible Evidence of Abuse or Neglect,
January 2015 – September 2018



Average P/D Combined Caseload*

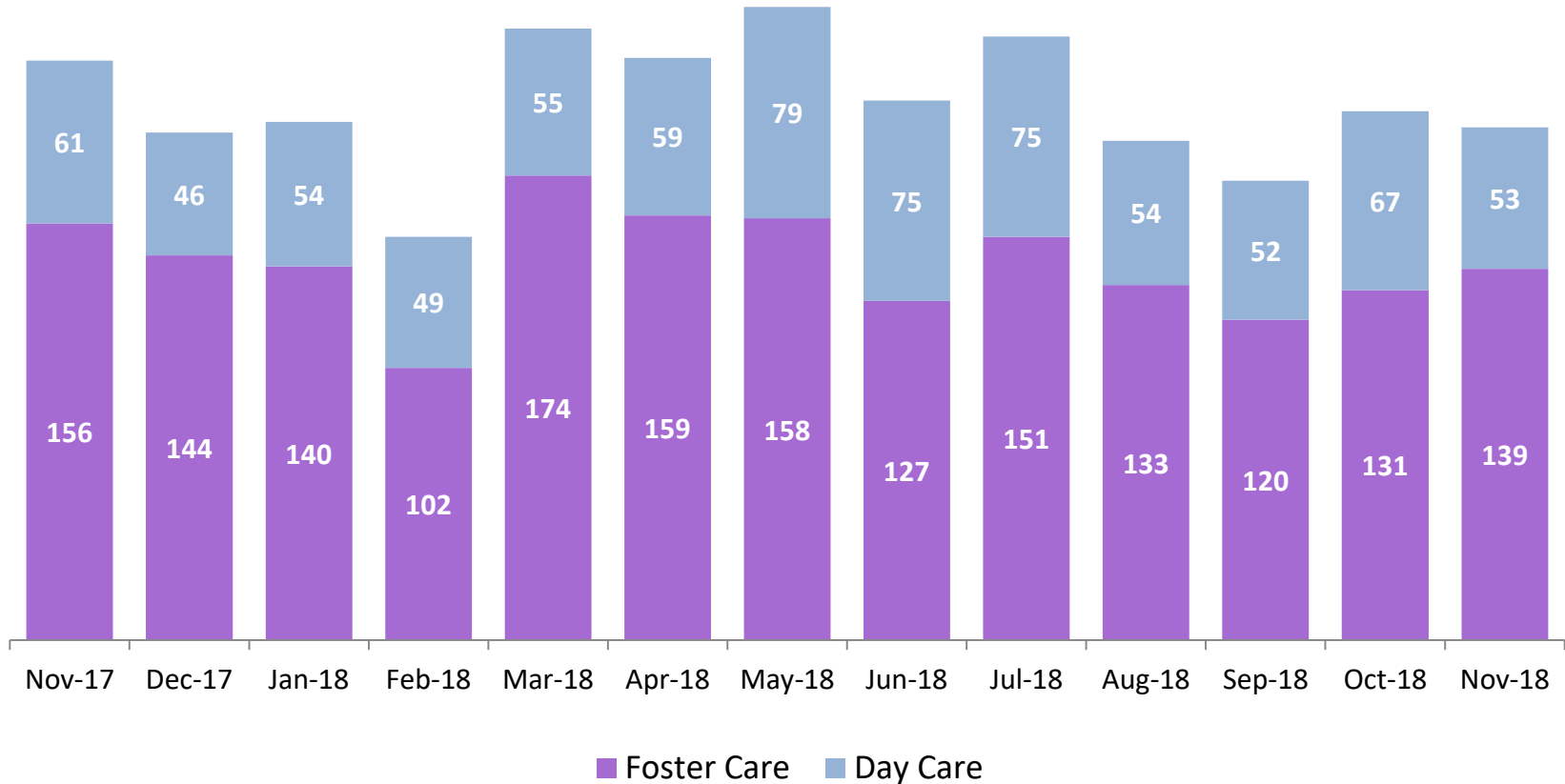
September – November 2017 and September – November 2018



*Caseloads are of protective/diagnostic caseworkers only and exclude the caseloads carried by Level I and Level II Supervisors.

OSI Foster Care and Day Care* Investigations

November 2017 – November 2018

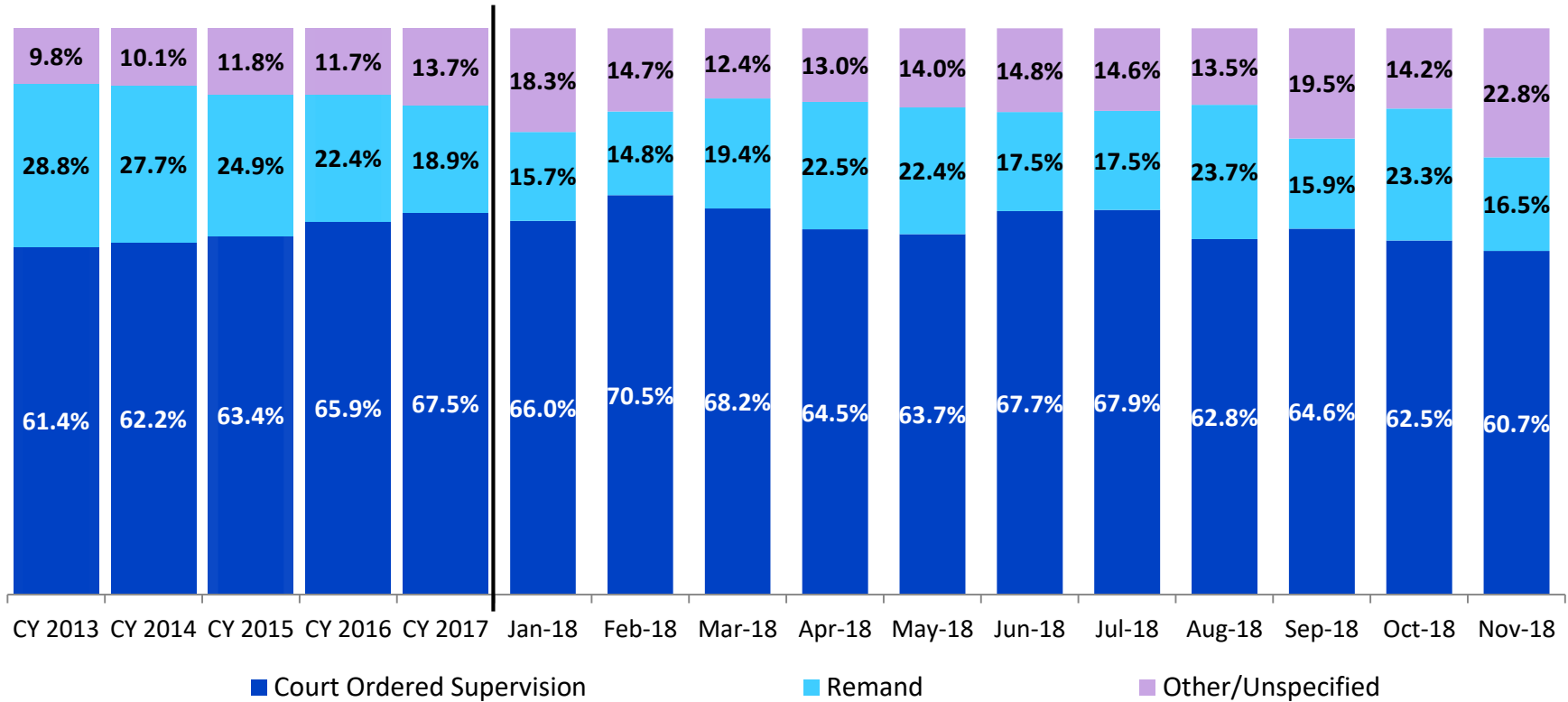


	Nov 2017	Dec 2017	Jan 2018	Feb 2018	Mar 2018	Apr 2018	May 2018	Jun 2018	Jul 2018	Aug 2018	Sep 2018	Oct 2018	Nov 2018
Number of Investigations	217	190	194	151	229	218	237	202	226	187	172	198	192

*Day Care investigations include alleged abuse or maltreatment of children perpetrated by someone who cares for children in a setting that is not the child’s familial home and that requires state or local government approval and is subject to state laws, regulations, and oversight. This includes, but is not limited to, ACS Early Care and 7 Education programs.

Article 10 Filings and Initial Hearing Outcomes, Children

CY 2013 – November 2018

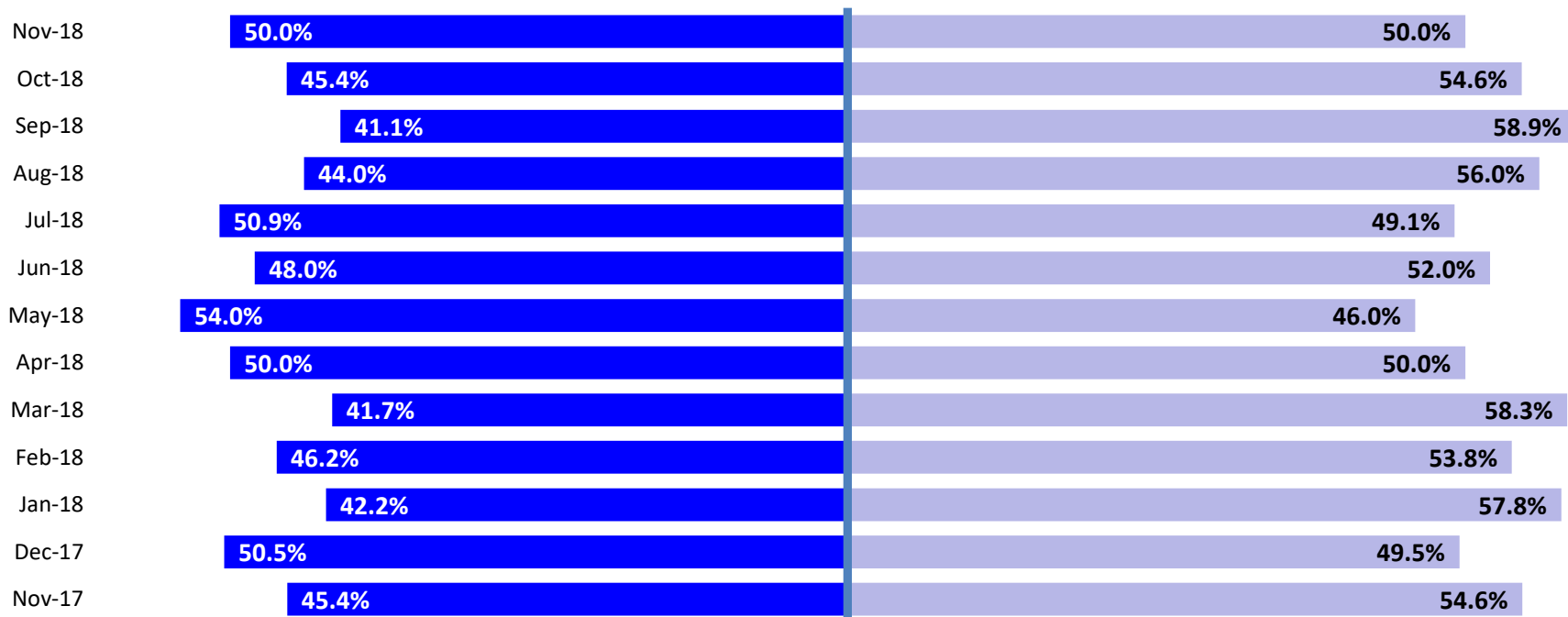


	CY 2013	CY 2014	CY 2015	CY 2016	CY 2017	Jan 2018	Feb 2018	Mar 2018	Apr 2018	May 2018	Jun 2018	Jul 2018	Aug 2018	Sep 2018	Oct 2018	Nov 2018
Children with Article 10 Filings	9,318	9,900	9,958	10,973	15,975	1,311	1,254	1,185	1,051	1,051	1,141	991	1,095	949	1,264	1,007

Note: The category “Other/Unspecified” includes released with no supervision, no order issued and no outcome specified.

Remands Approved at Initial Article 10 Hearing by Removal Status

November 2017 – November 2018

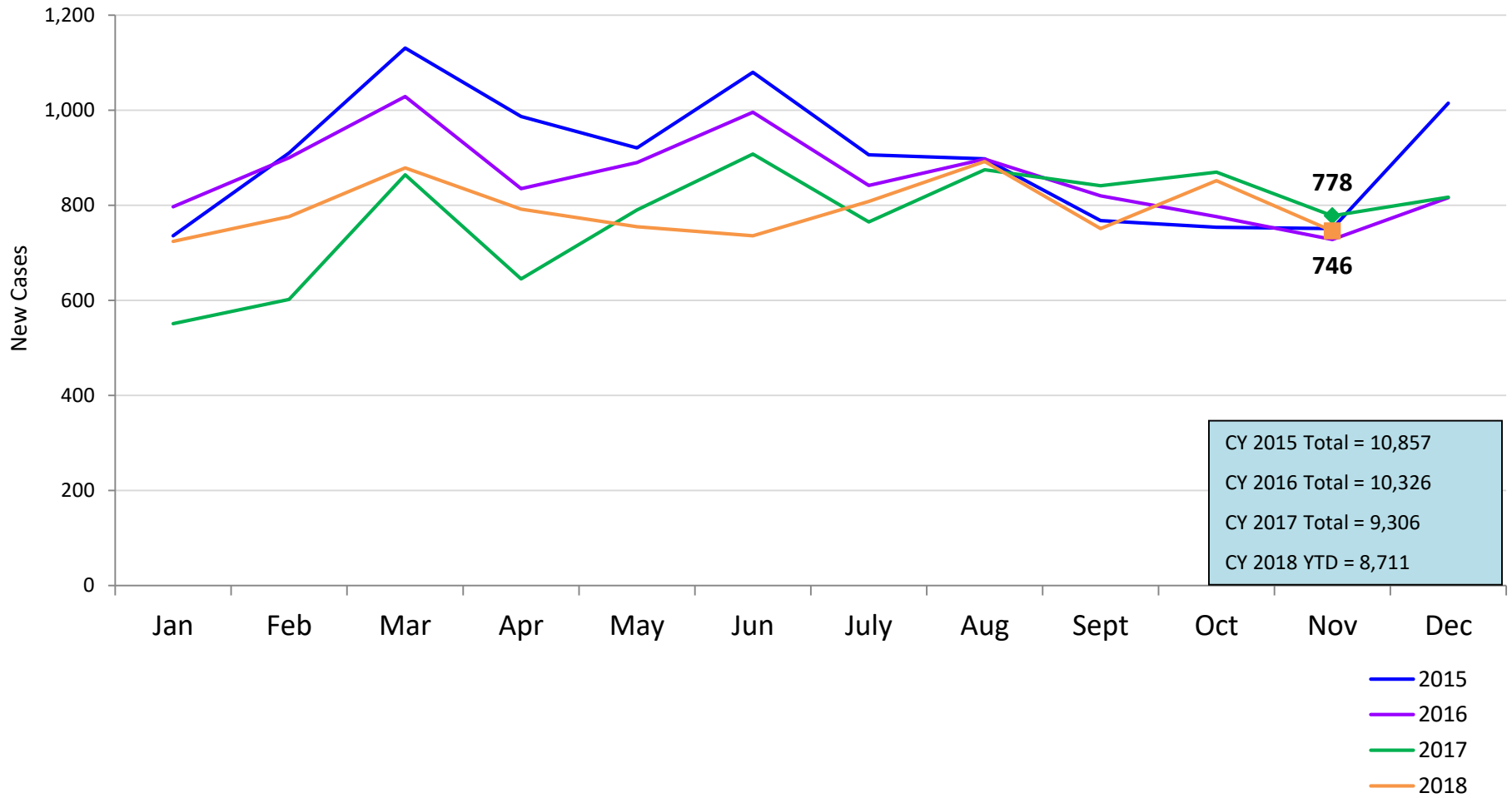


■ Pre-Filing Emergency Removals (court approved at initial hearing) ■ Post-Filing Removals (court ordered at initial hearing)

	Nov 2017	Dec 2017	Jan 2018	Feb 2018	Mar 2018	Apr 2018	May 2018	Jun 2018	Jul 2018	Aug 2018	Sep 2018	Oct 2018	Nov 2018
Children Remanded	238	210	206	186	230	236	235	200	173	259	151	295	166

New Child Welfare Prevention Cases*

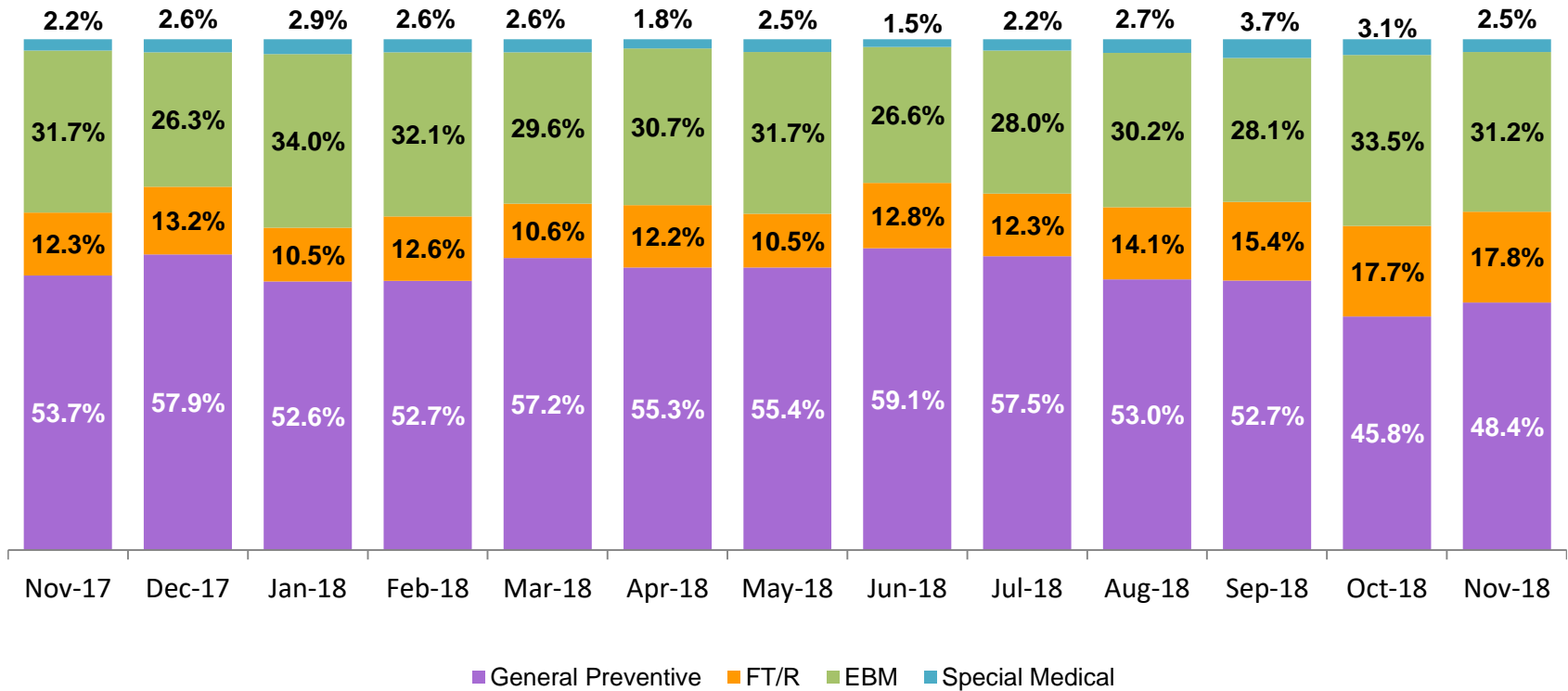
January 2015 – November 2018



* New prevention cases do not include cases transferred from one preventive program to another. See Pages 33 and 34 of the Appendix for supporting data.

New Child Welfare Prevention Cases by Program Type *

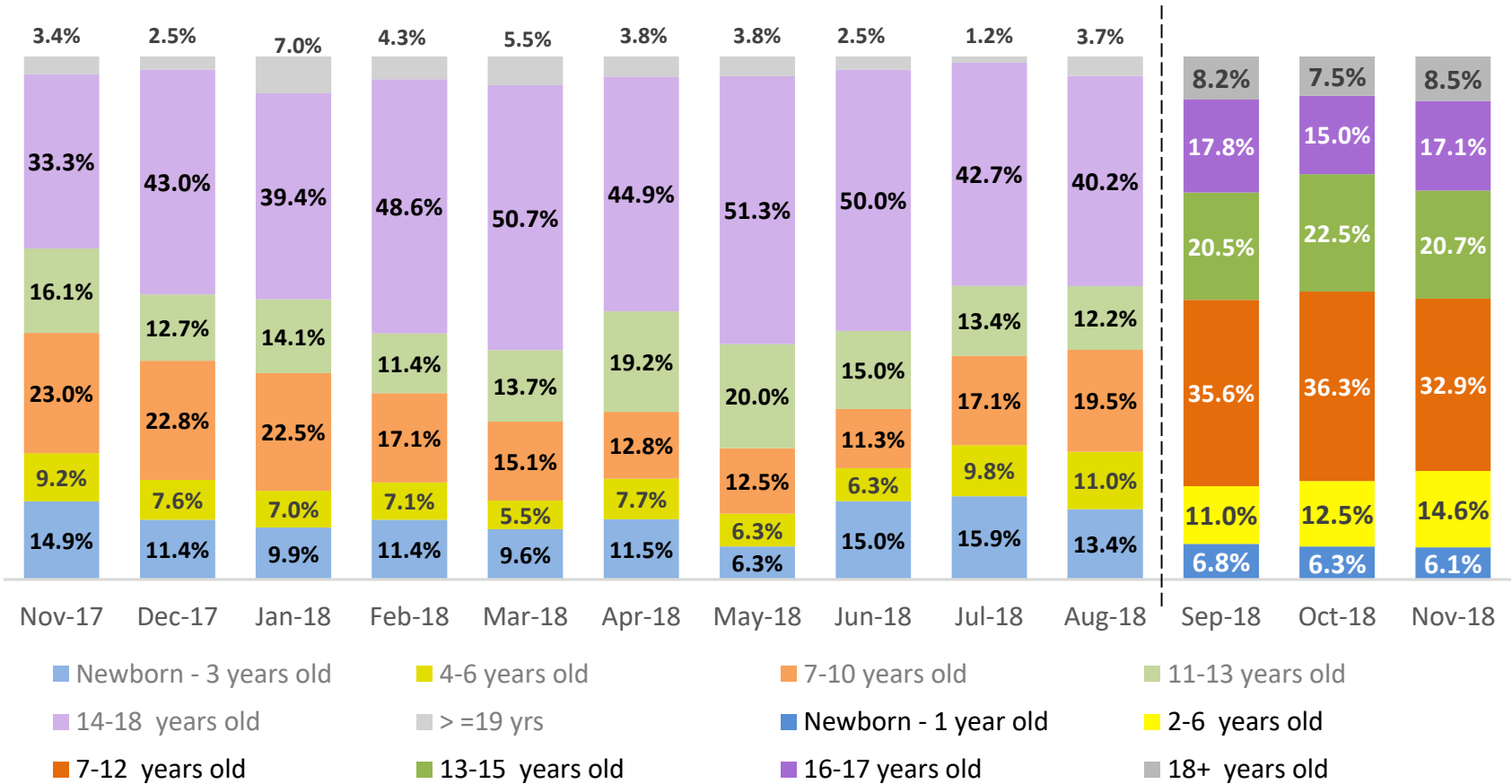
November 2017 – November 2018



	Nov 2017	Dec 2017	Jan 2018	Feb 2018	Mar 2018	Apr 2018	May 2018	Jun 2018	Jul 2018	Aug 2018	Sep 2018	Oct 2018	Nov 2018
Number of New Preventive Cases	778	817	724	776	879	792	755	736	808	892	751	852	746

* New prevention cases exclude cases transferred from one prevention program to another.

Average Daily Children’s Center Population November 2017 – November 2018

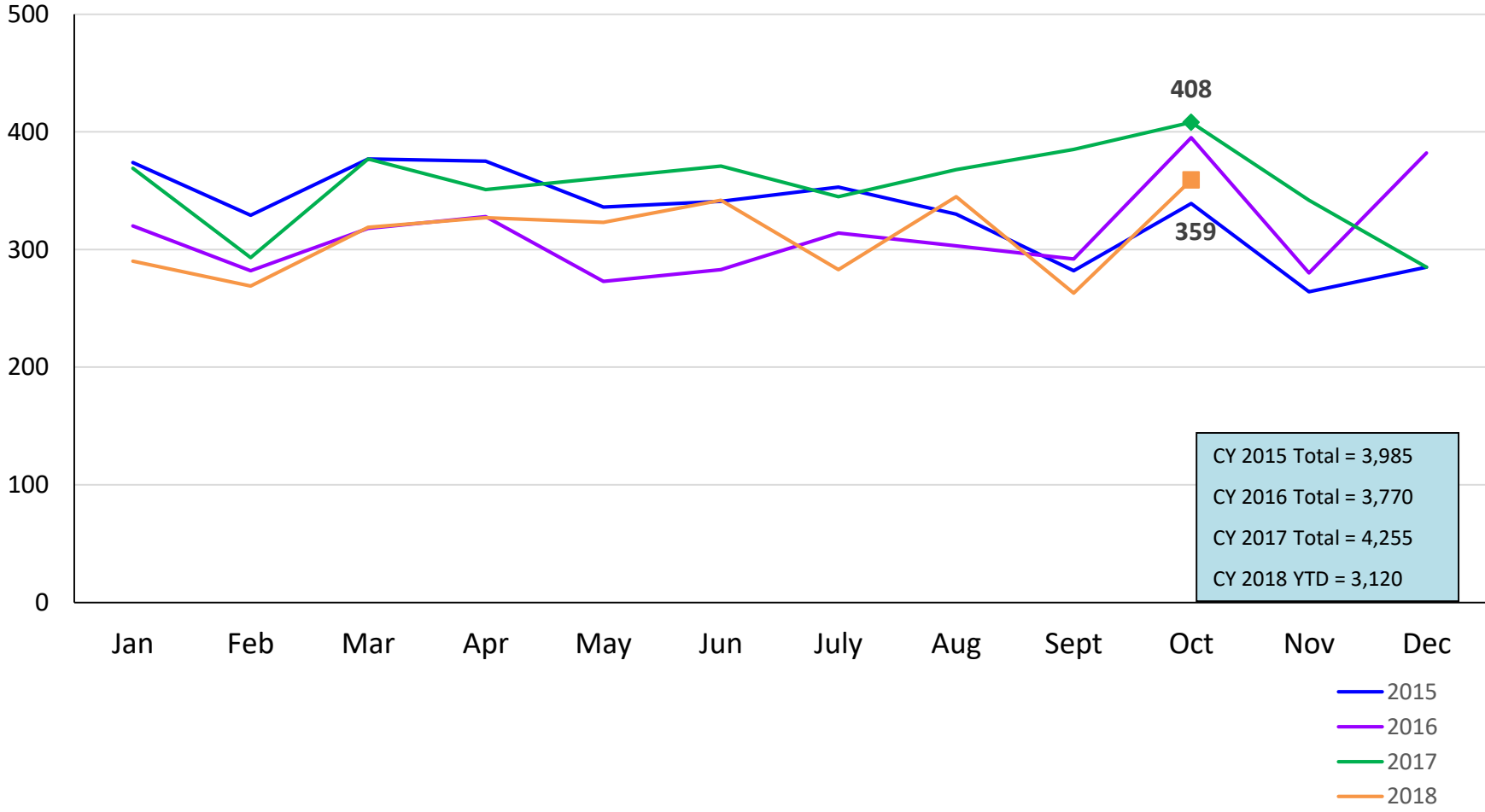


	Nov 2017	Dec 2017	Jan 2018	Feb 2018	Mar 2018	Apr 2018	May 2018	Jun 2018	Jul 2018	Aug 2018*	Sep 2018	Oct 2018	Nov 2018
Average Number of Children	87	79	71	70	73	78	80	80	82	82	73	80	82

- August 2018 includes data from August 1st to August 28th.
- New age groups were introduced in September 2018.

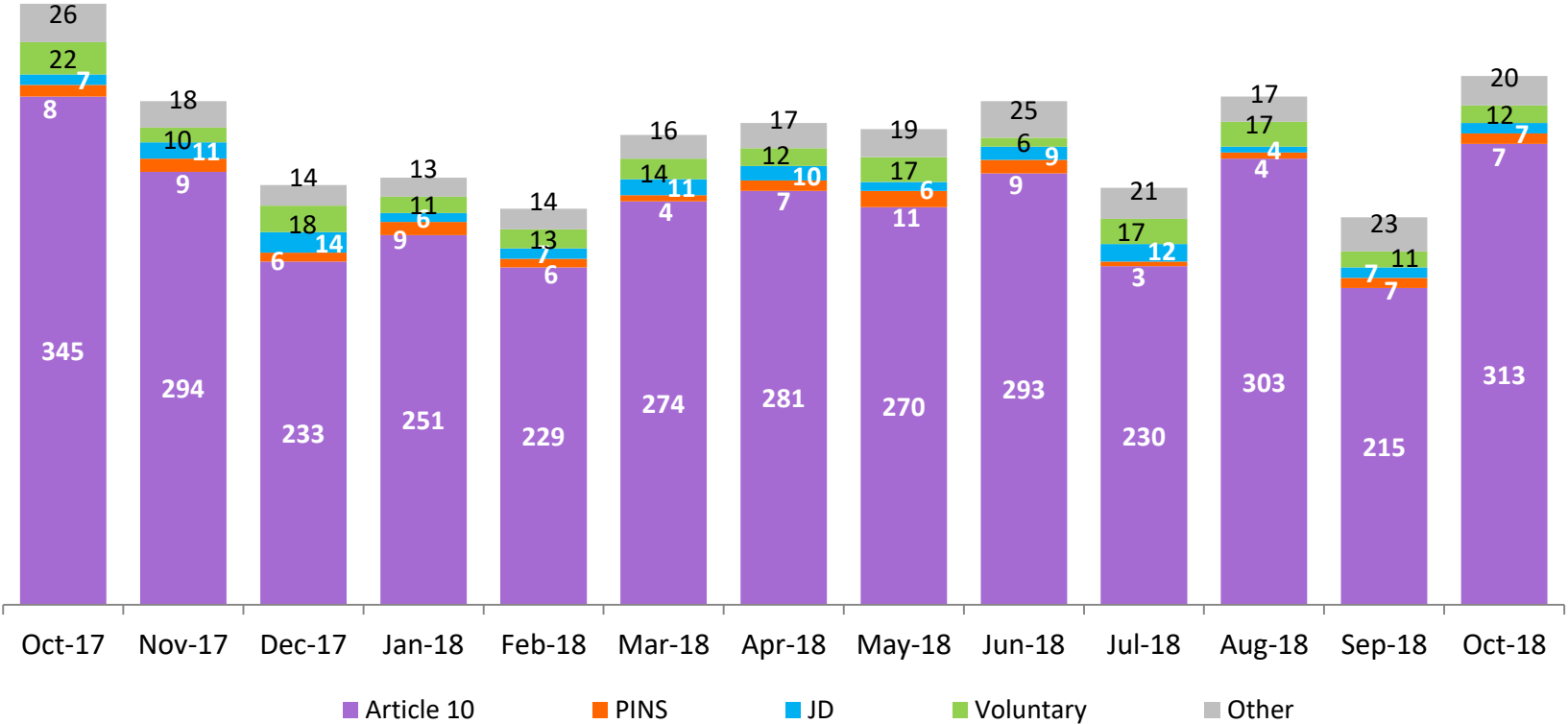
New Monthly Placements of Children into Foster Care

January 2015 – October 2018



Reason for New Placements of Children into Foster Care

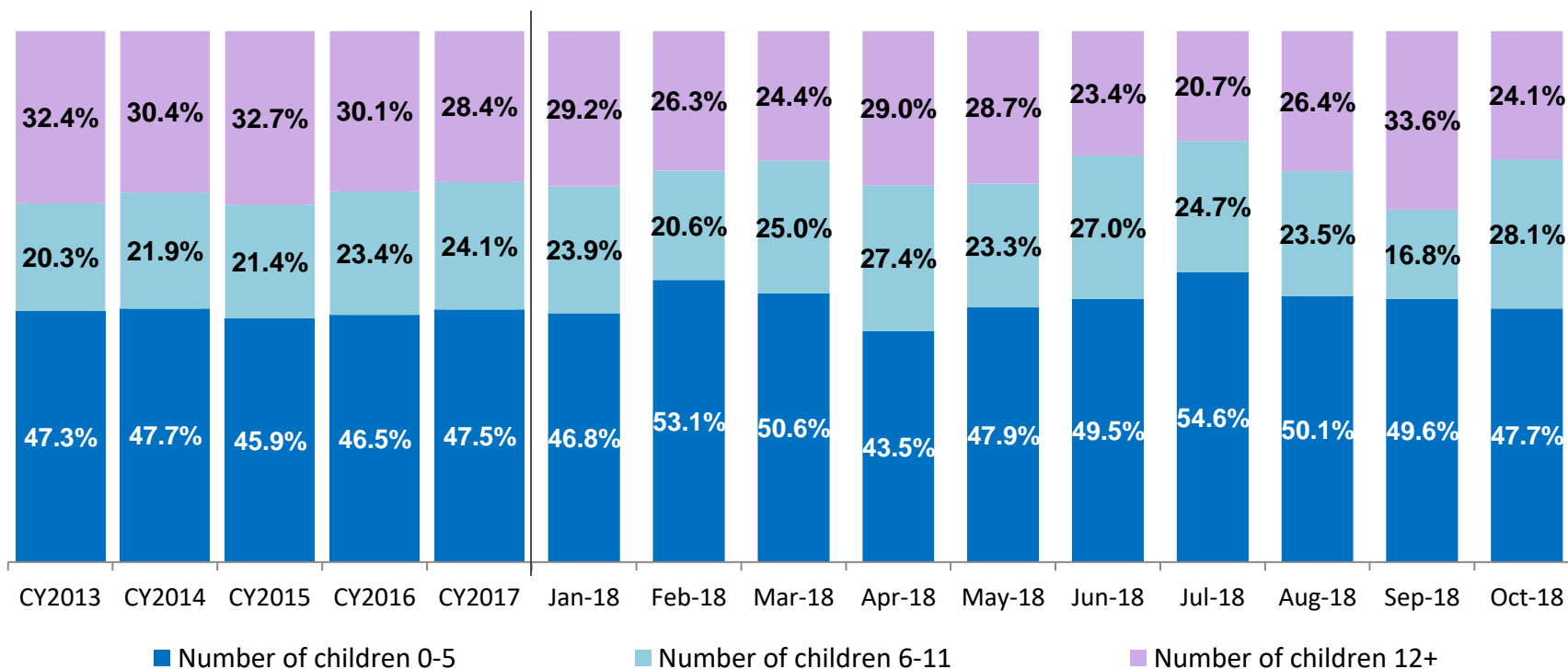
October 2017 – October 2018



	Oct 2017	Nov 2017	Dec 2017	Jan 2018	Feb 2018	Mar 2018	Apr 2018	May 2018	Jun 2018	Jul 2018	Aug 2018	Sep 2018	Oct 2018
Number of Placements	408	342	285	290	269	319	327	323	342	283	345	263	359

New Placements of Children into Foster Care* by Age

CY 2013 - October 2018

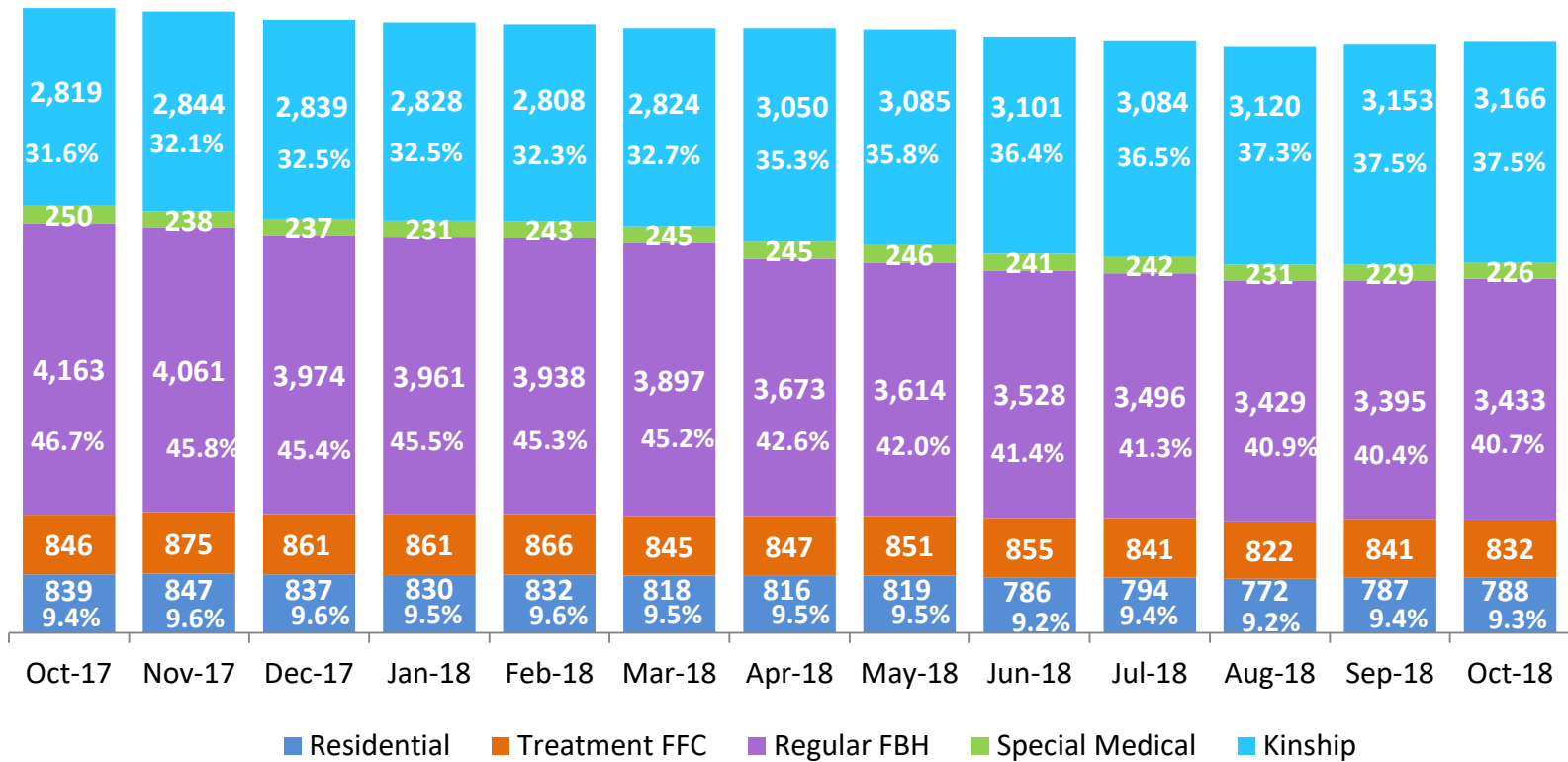


	CY 2013	CY 2014	CY 2015	CY 2016	CY 2017	Jan 2018	Feb 2018	Mar 2018	Apr 2018	May 2018	Jun 2018	Jul 2018	Aug 2018	Sep 2018	Oct 2018
Number of Placements	4,283	4,160	3,760	3,557	4,097	284	262	308	317	317	333	271	341	256	352

*Excludes CTH placements.

Children in Foster Care *

October 2017 – October 2018 (end of month)

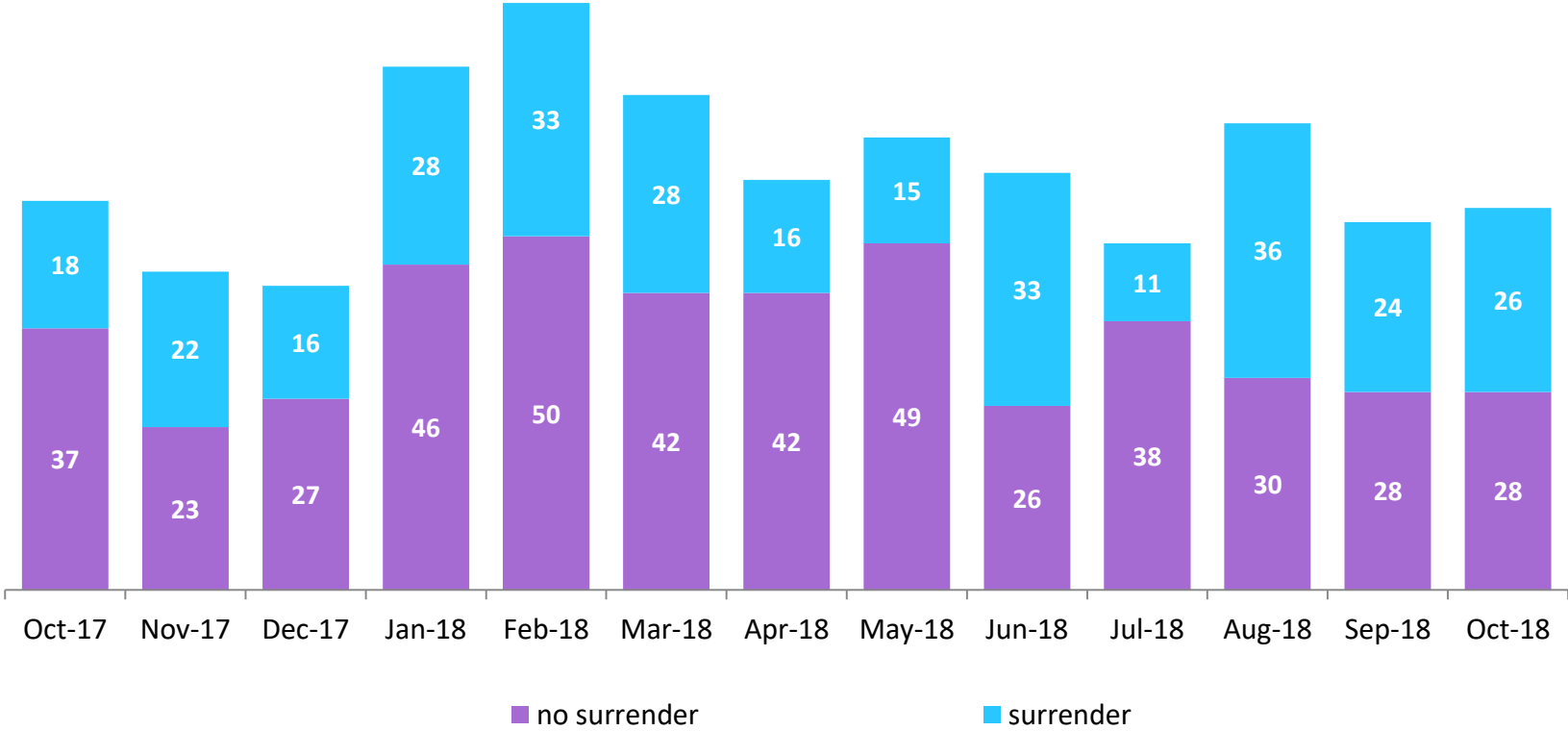


	Oct 2017	Nov 2017	Dec 2017	Jan 2018	Feb 2018	Mar 2018	Apr 2018	May 2018	Jun 2018	Jul 2018	Aug 2018	Sep 2018	Oct 2018
Number in Foster Care	8,917	8,865	8,747	8,711	8,687	8,629	8,631	8,615	8,512	8,458	8,374	8,406	8,444

*Excludes CTH placements and includes children in 24 hour care and approximately 200 young children who are living in foster homes or residential care facilities with their mothers who are in foster care (8D children).

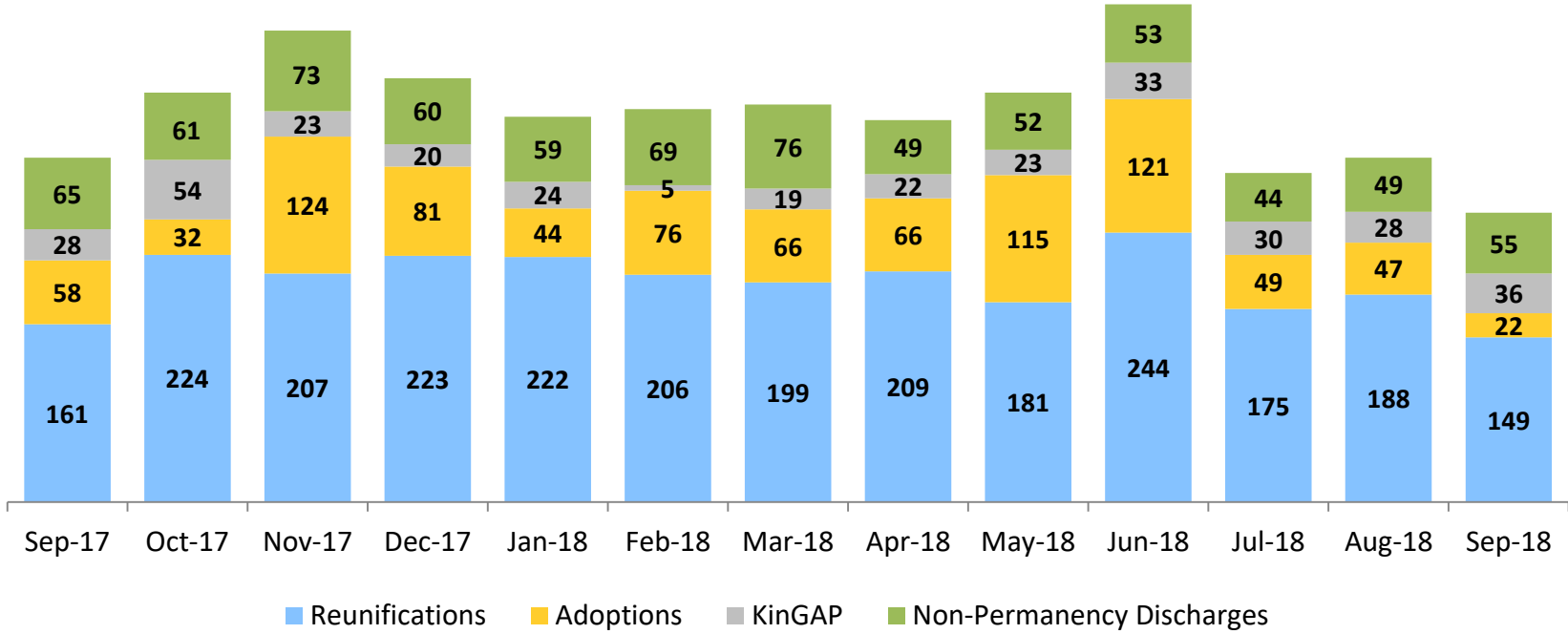
Children Freed for Adoption, Surrender by at Least One Parent

October 2017 – October 2018



	Oct 2017	Nov 2017	Dec 2017	Jan 2018	Feb 2018	Mar 2018	Apr 2018	May 2018	Jun 2018	Jul 2018	Aug 2018	Sep 2018	Oct 2018
Number Freed for Adoption	55	45	43	74	83	70	58	64	59	49	66	52	54

Permanency and Non-Permanency* Discharges from Foster Care** September 2017 – September 2018

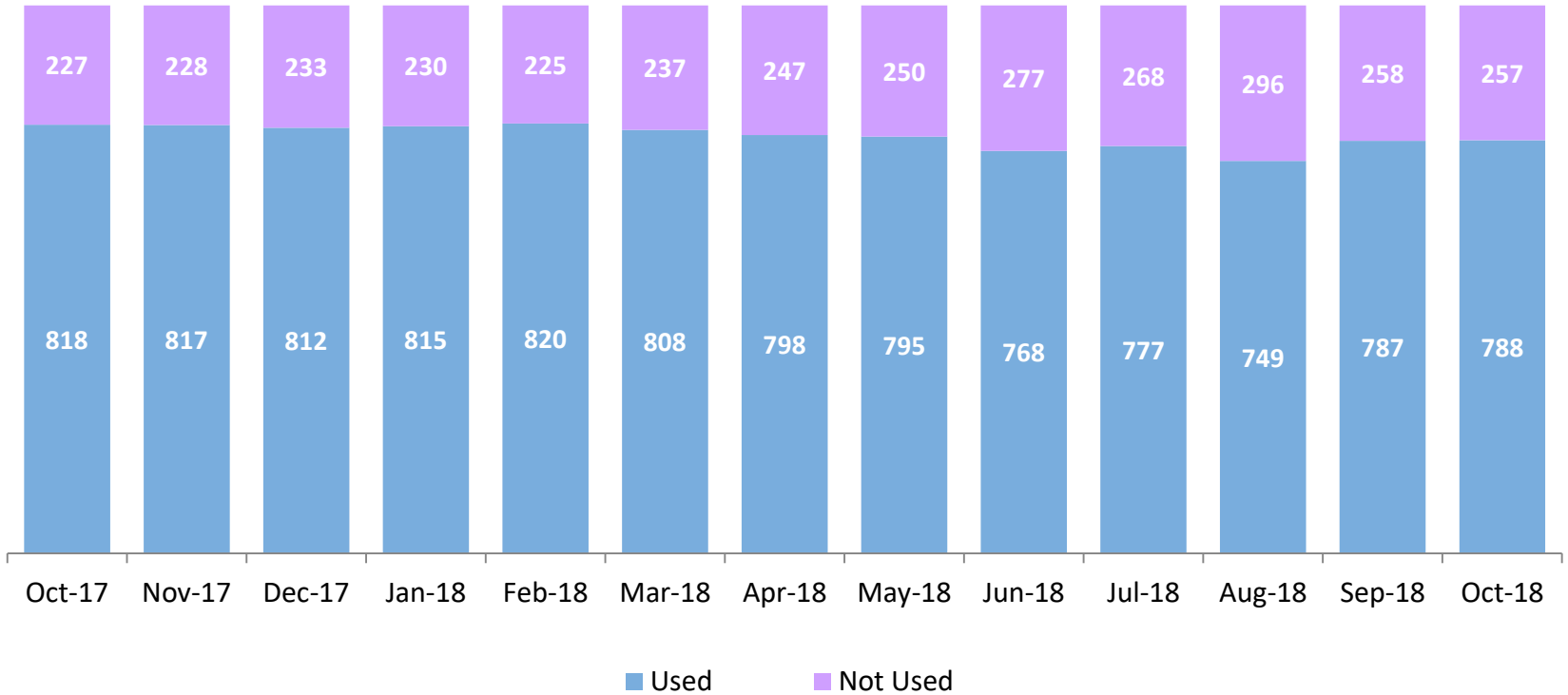


	Sep 2017	Oct 2017	Nov 2017	Dec 2017	Jan 2018	Feb 2018	Mar 2018	Apr 2018	May 2018	Jun 2018	Jul 2018	Aug 2018	Sep 2018
Number of Discharges	312	371	427	384	349	356	360	346	371	451	298	312	262

*The methodology for non-permanency discharges was changed September 2018. This statistic is not comparable to prior reports. Non-permanency discharges include AWOL, APPLA (youth 18-20 years old discharged to self and youth who reached 21 while in care), and other discharge destinations such as psychiatric institutions and correctional facilities and discharges with unspecified destinations.

**Excludes discharges of youth from CTH placements.

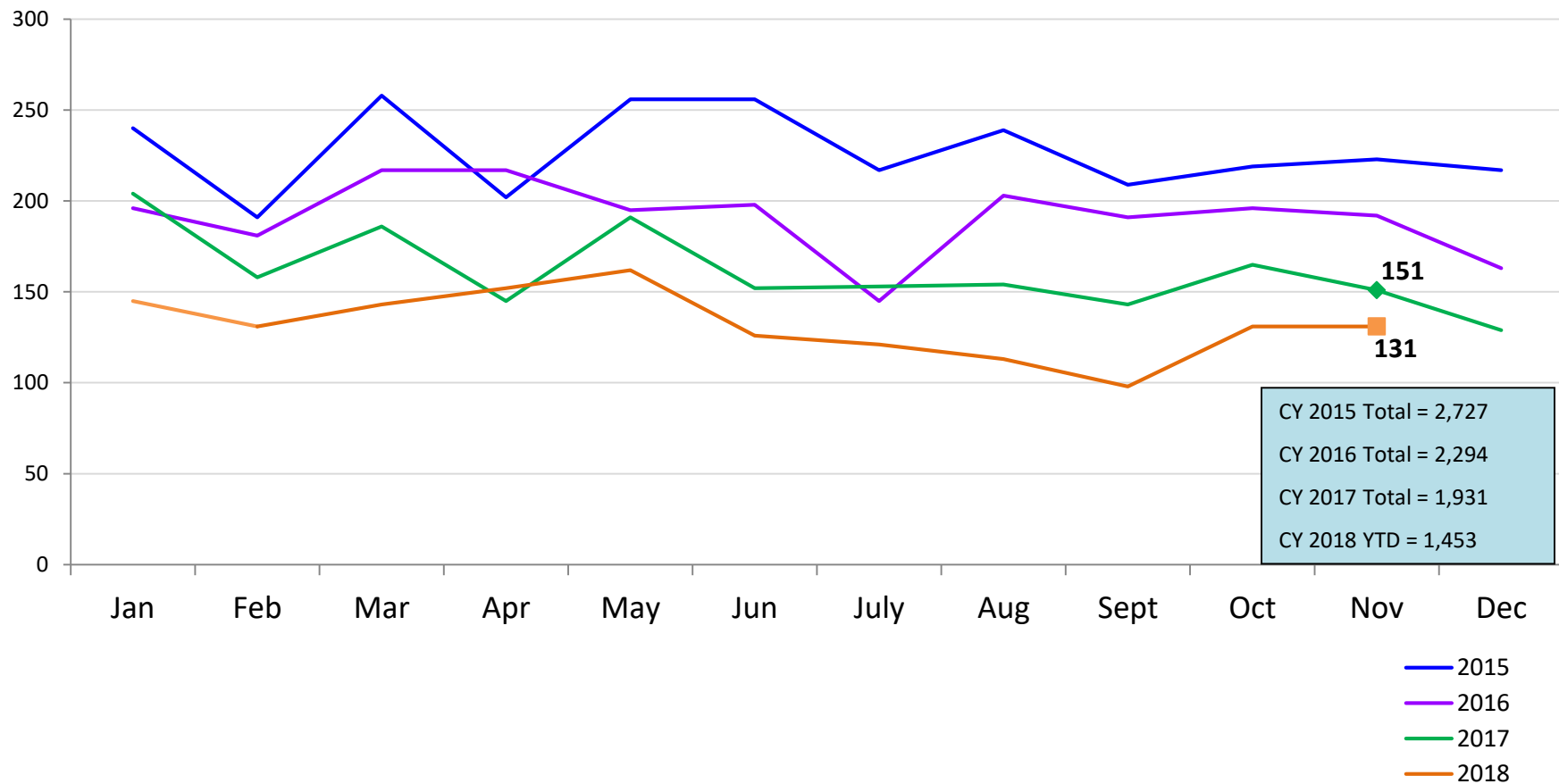
Residential Care Capacity and Utilization October 2017 – October 2018



	Oct 2017	Nov 2017	Dec 2017	Jan 2018	Feb 2018	Mar 2018	Apr 2018	May 2018	Jun 2018	Jul 2018	Aug 2018	Sep 2018	Oct 2018
Capacity	1,045	1,045	1,045	1,045	1,045	1,045	1,045	1,045	1,045	1,045	1,045	1,045	1,045

Total Monthly Admissions to Detention

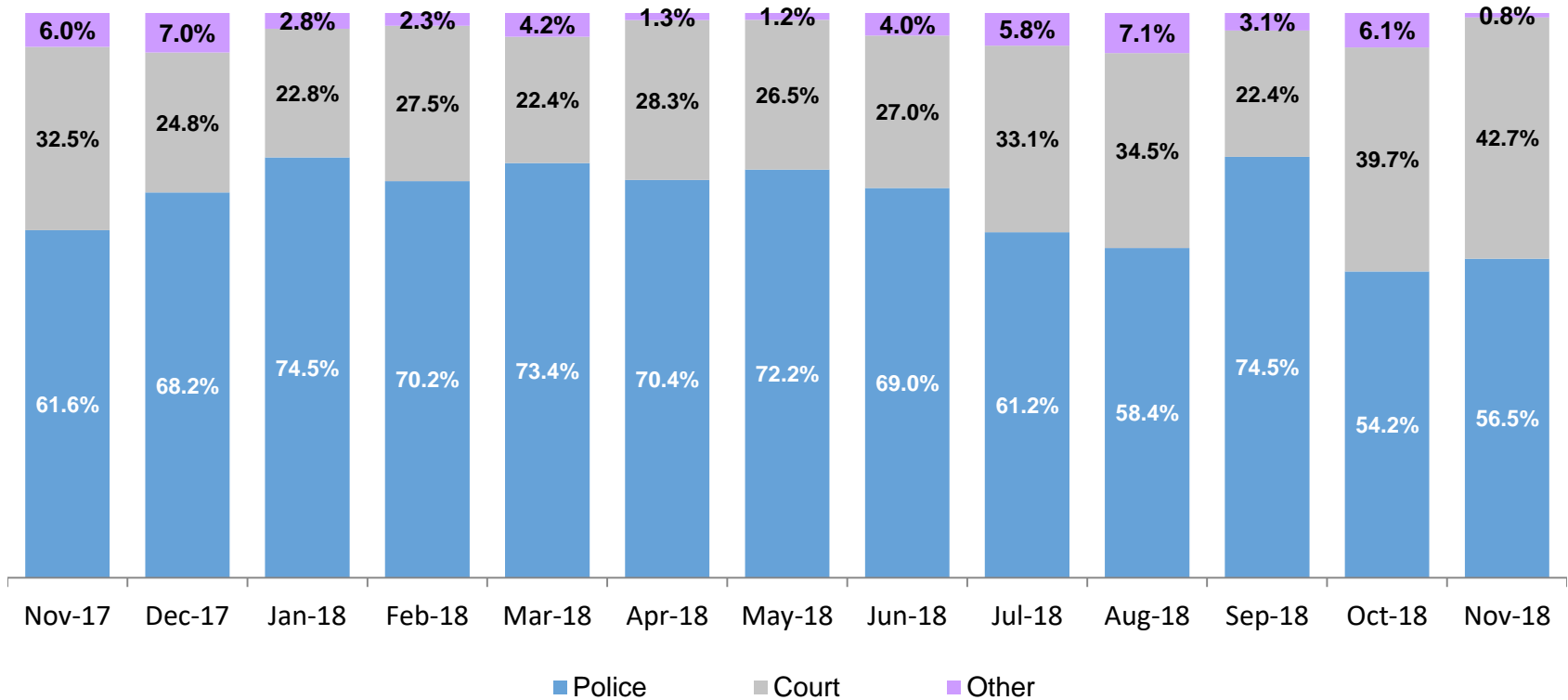
January 2015 – November 2018*



*Beginning in October 2018 admissions to Horizon Juvenile Facility are not included in the ACS detention statistics.

Admit Authority, Detention Admissions

November 2017 – November 2018*



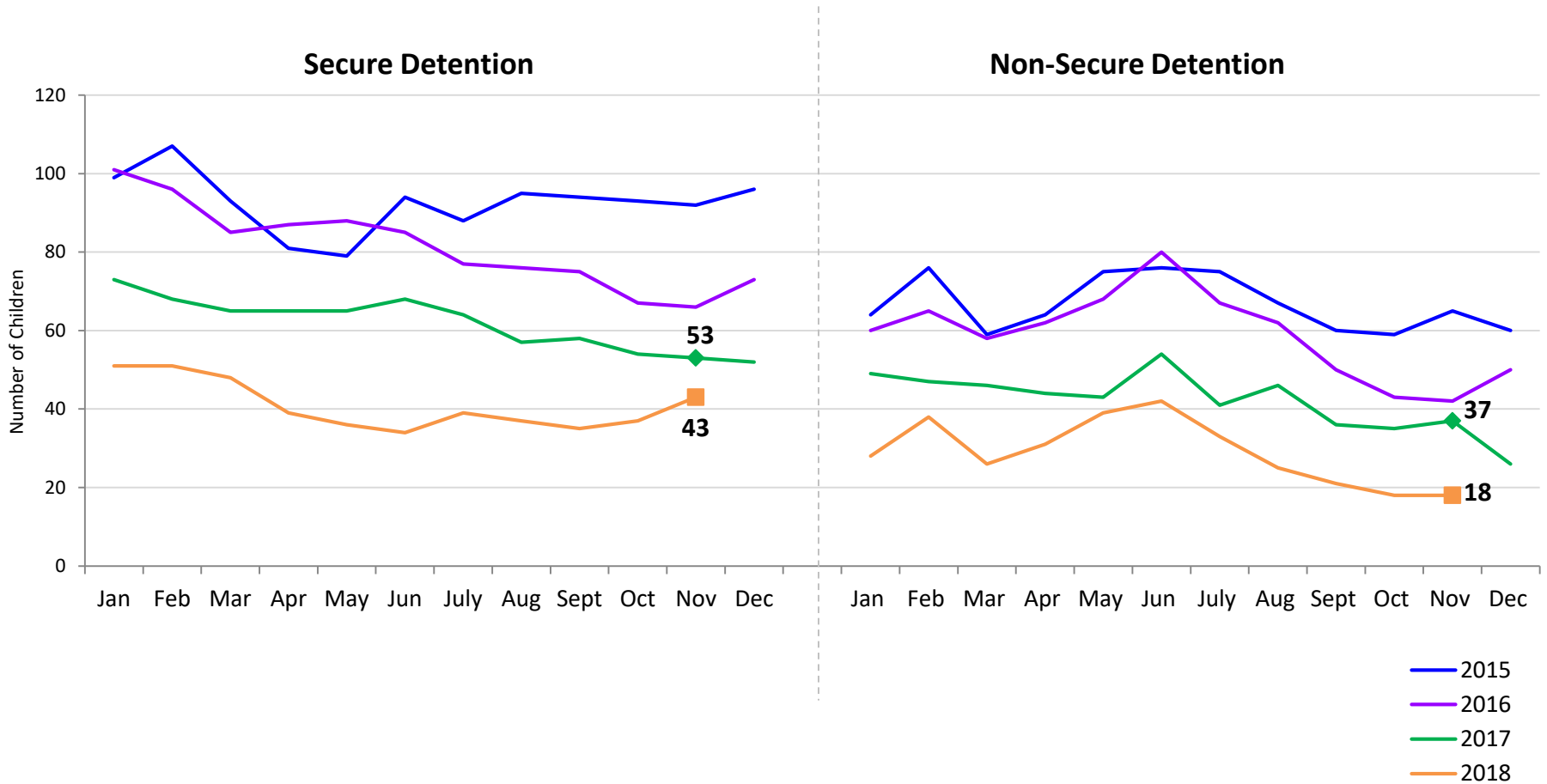
	Nov 2017	Dec 2017	Jan 2018	Feb 2018	Mar 2018	Apr 2018	May 2018	Jun 2018	Jul 2018	Aug 2018	Sep 2018	Oct 2018	Nov 2018
Number of Admissions	151	129	145	131	143	152	162	126	121	113	98	131	131

Note: Other Admit Authority includes the Sheriff Department, Department of Corrections and ACS.

*Beginning in October 2018 admissions to Horizon Juvenile Facility are not included in the ACS detention statistics.

Monthly Average Daily Population

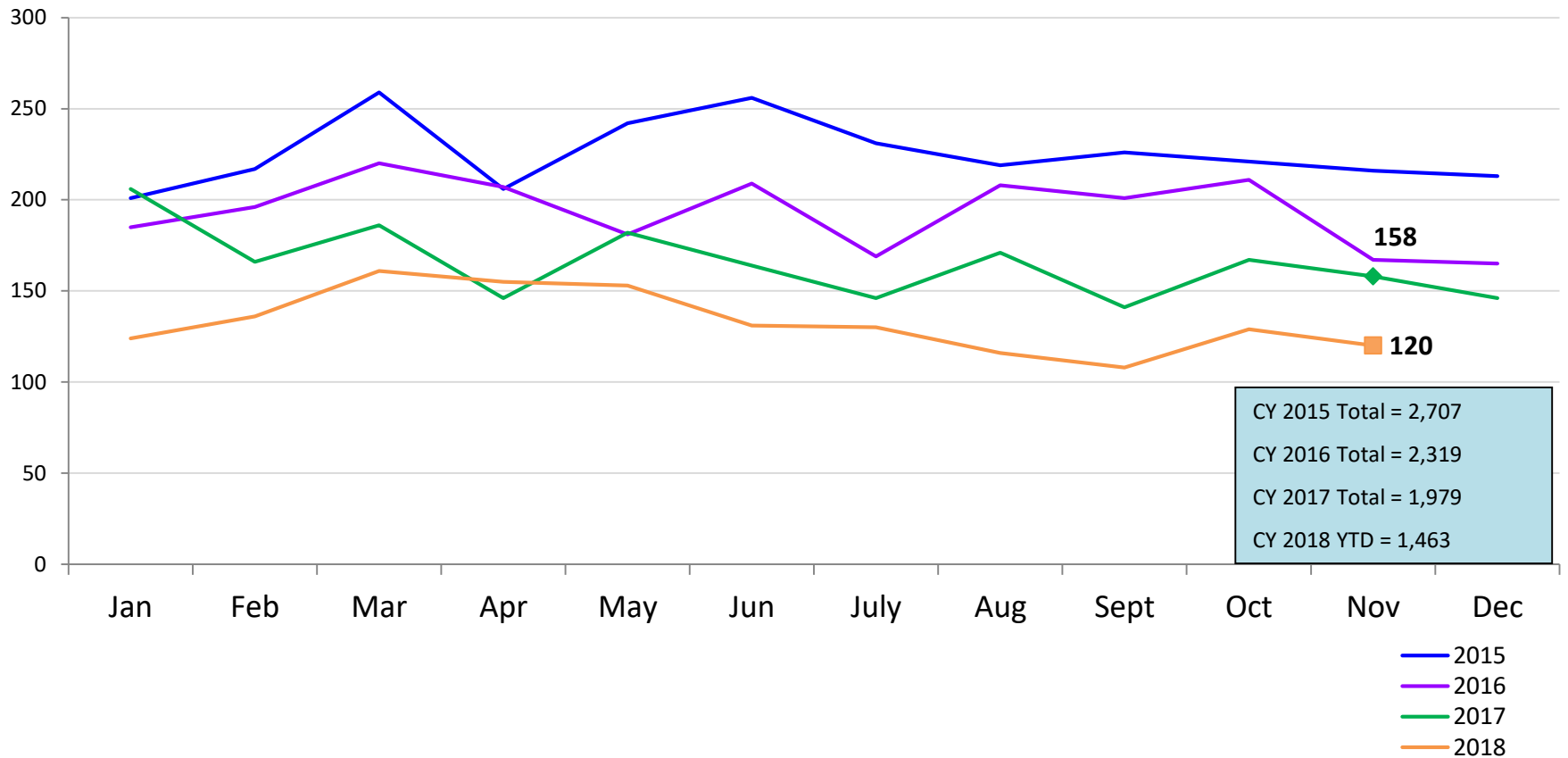
January 2015 – November 2018*



*Beginning in October 2018 youth in the Horizon Juvenile Facility are not included in the ACS detention statistics.

Total Monthly Releases from Detention

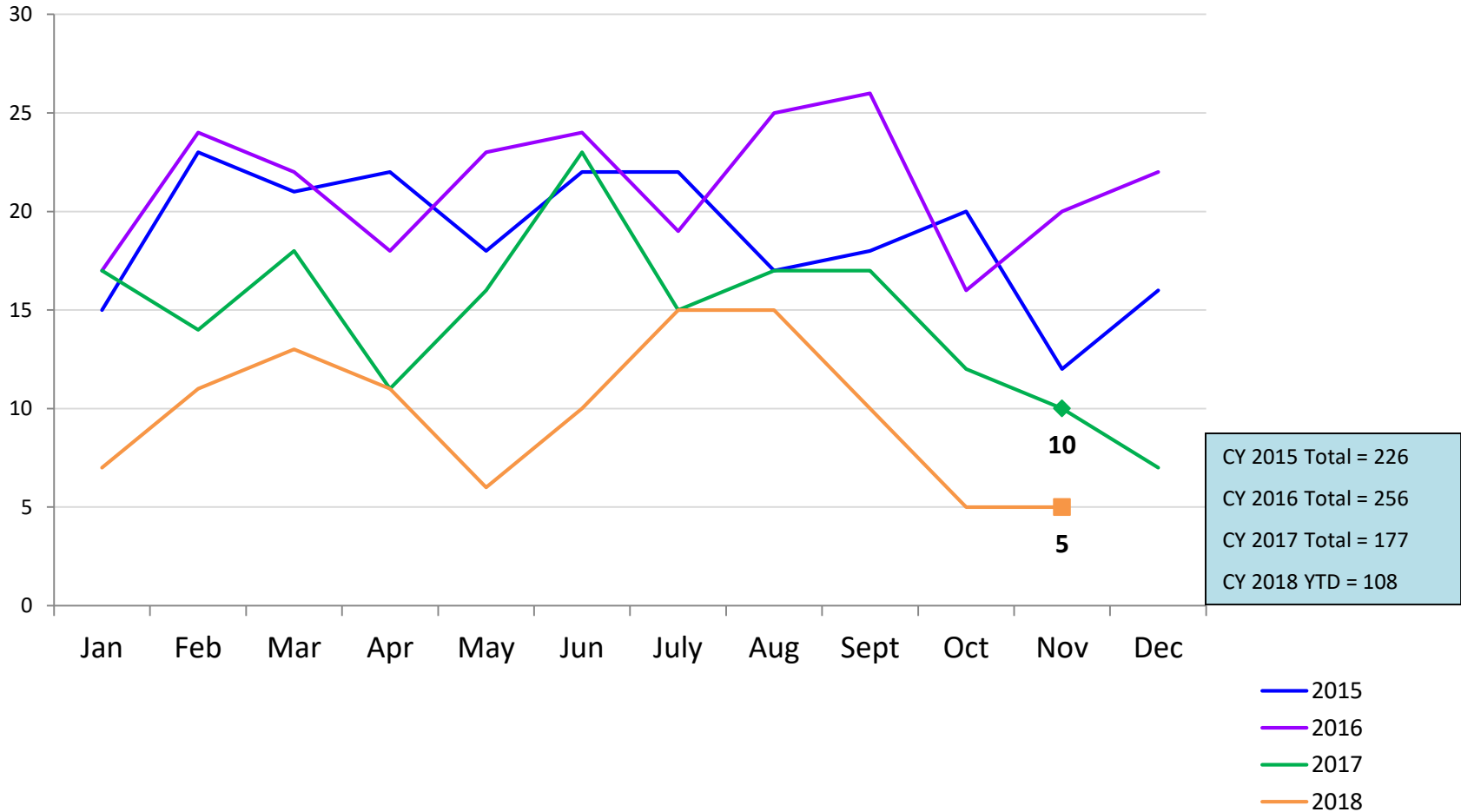
January 2015 – November 2018*



*Beginning in October 2018 releases from the Horizon Juvenile Facility are not included in the ACS detention statistics.

Close to Home Admissions*

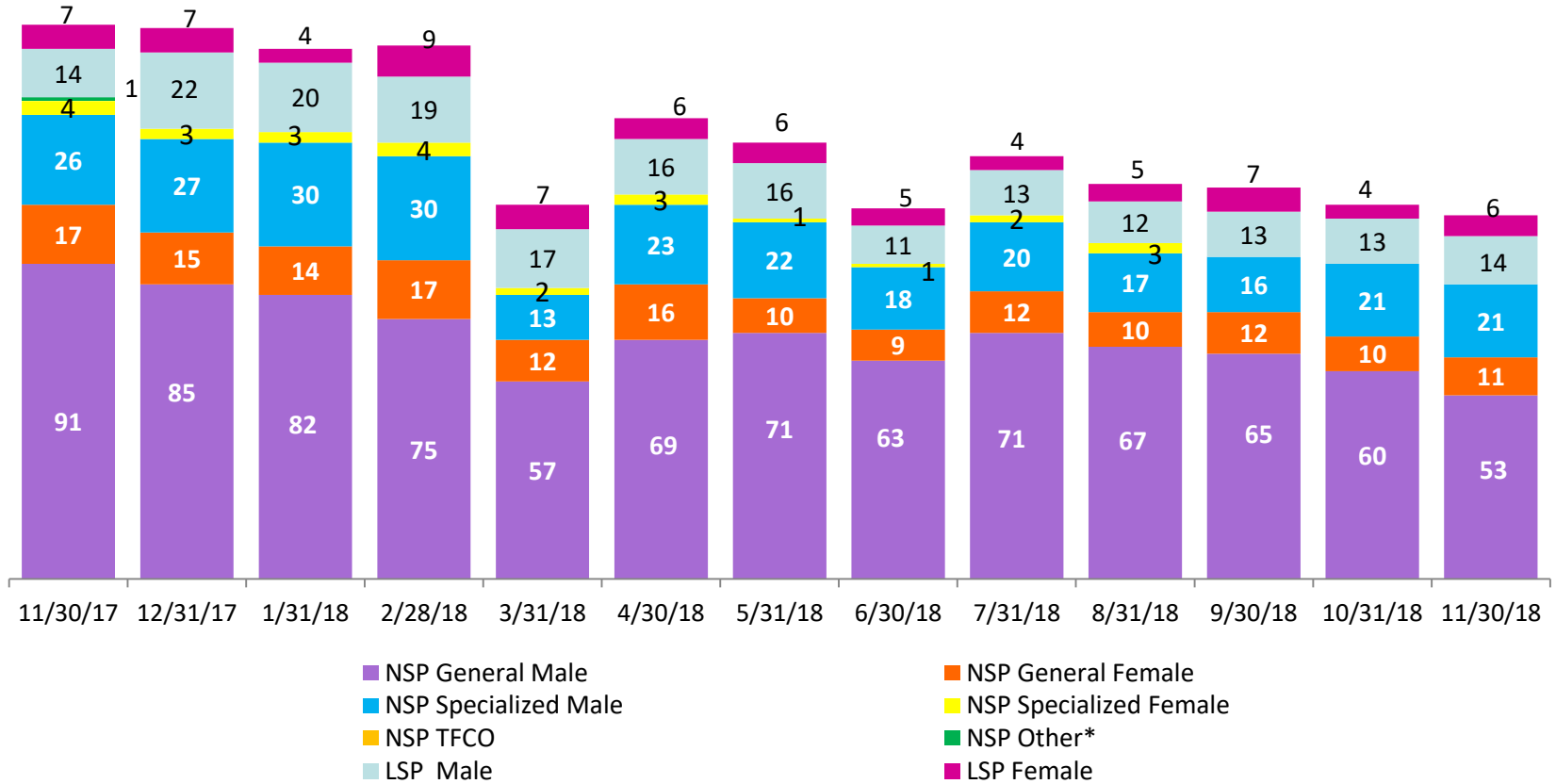
January 2015 – November 2018



*Beginning in December 2015 Close to Home admissions include LSP as well as NSP.

CTH Placement, in 24-hour Care

November 2017 – November 2018 (end of month)

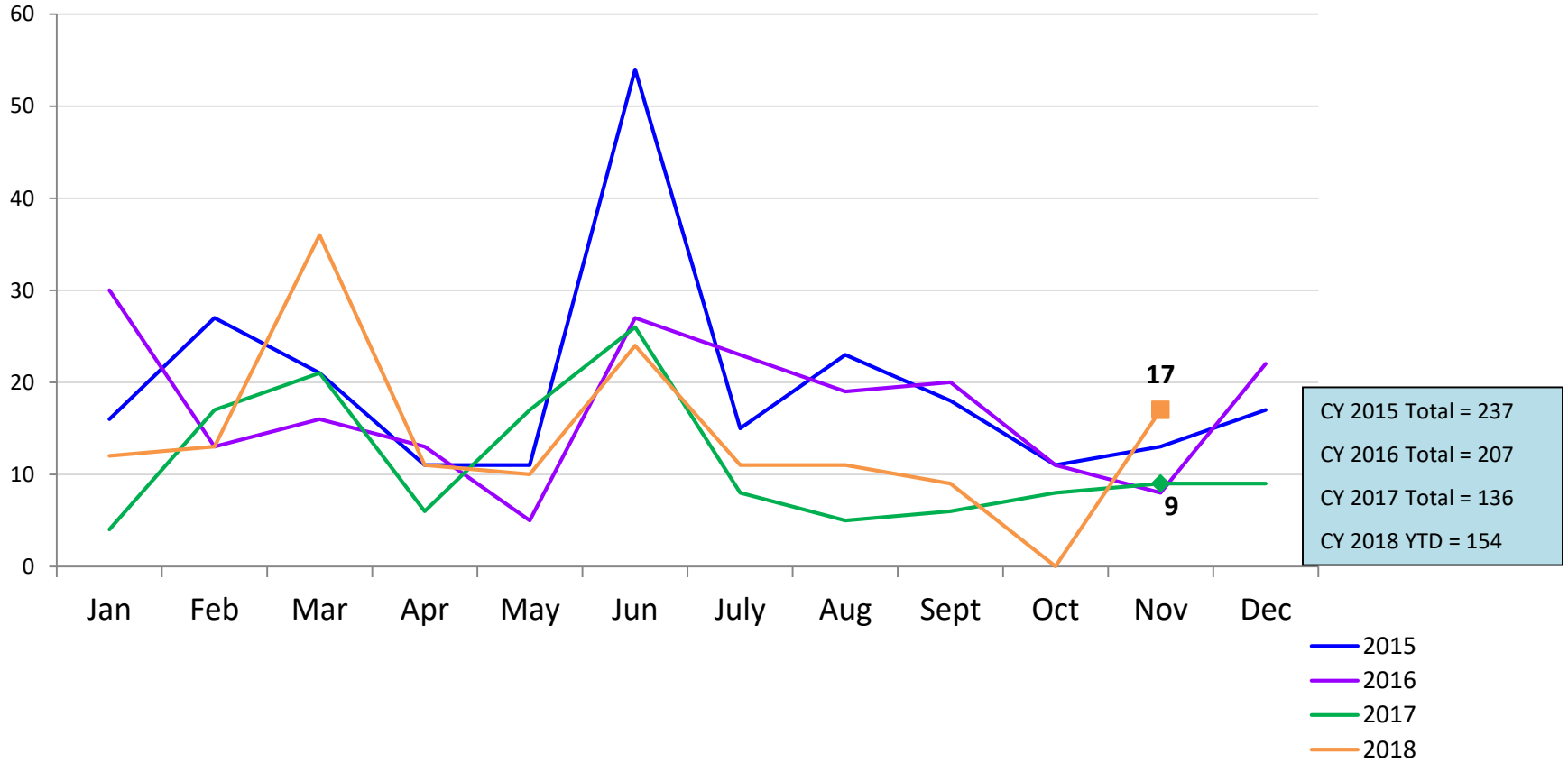


Number in Placement													
	11/30/17	12/31/17	1/31/18	2/28/18	3/31/18	4/30/18	5/31/18	6/30/18	7/31/18	8/31/18	9/30/18	10/31/18	11/30/18
NSP	139	130	129	126	84	111	104	91	105	97	93	91	85
LSP	21	29	24	28	24	22	22	16	17	17	20	17	20

*NSP Other includes youth in child welfare and mother/child placements.

Releases from Close to Home Placement to Aftercare

January 2015 – November 2018



Appendix

Figure 1: SCR Intakes by Borough, SEPTEMBER 17 – NOVEMBER 17 and SEPTEMBER 18 – NOVEMBER 18



Table 1 - SCR Intake Changes by Borough, SEPTEMBER 17 – NOVEMBER 17 and SEPTEMBER 18 – NOVEMBER 18

Month	Year	Bronx	Brooklyn	Manhattan	Queens	Staten Island	OSI	Other	Total
SEPTEMBER	2017	1,317	1,288	787	881	247	138	205	4,863
	2018	1,251	1,252	735	896	217	160	176	4,687
	% Change	-5.0%	-2.8%	-6.6%	1.7%	-12.1%	15.9%	-14.1%	-3.6%
OCTOBER	2017	1,843	1,871	857	1,272	348	192	208	6,591
	2018	1,829	1,785	903	1,380	291	186	183	6,558
	% Change	-0.8%	-4.6%	5.4%	8.5%	-16.4%	-3.1%	-12.0%	-0.5%
NOVEMBER	2017	1,815	1,656	898	1,259	323	165	176	6,292
	2018	1,695	1,471	929	1,205	283	159	164	5,906
	% Change	-6.6%	-11.2%	3.5%	-4.3%	-12.4%	-3.6%	-6.8%	-6.1%
Total	2017	4,975	4,815	2,542	3,412	918	495	589	17,746
	2018	4,775	4,508	2,567	3,481	791	505	523	17,151
	% Change	-4.0%	-6.4%	1.0%	2.0%	-13.8%	2.0%	-11.2%	-3.4%

Figure 2: Citywide SCR Intakes by Reporter Group, SEPTEMBER 17 – NOVEMBER 17 and SEPTEMBER 18 – NOVEMBER 18

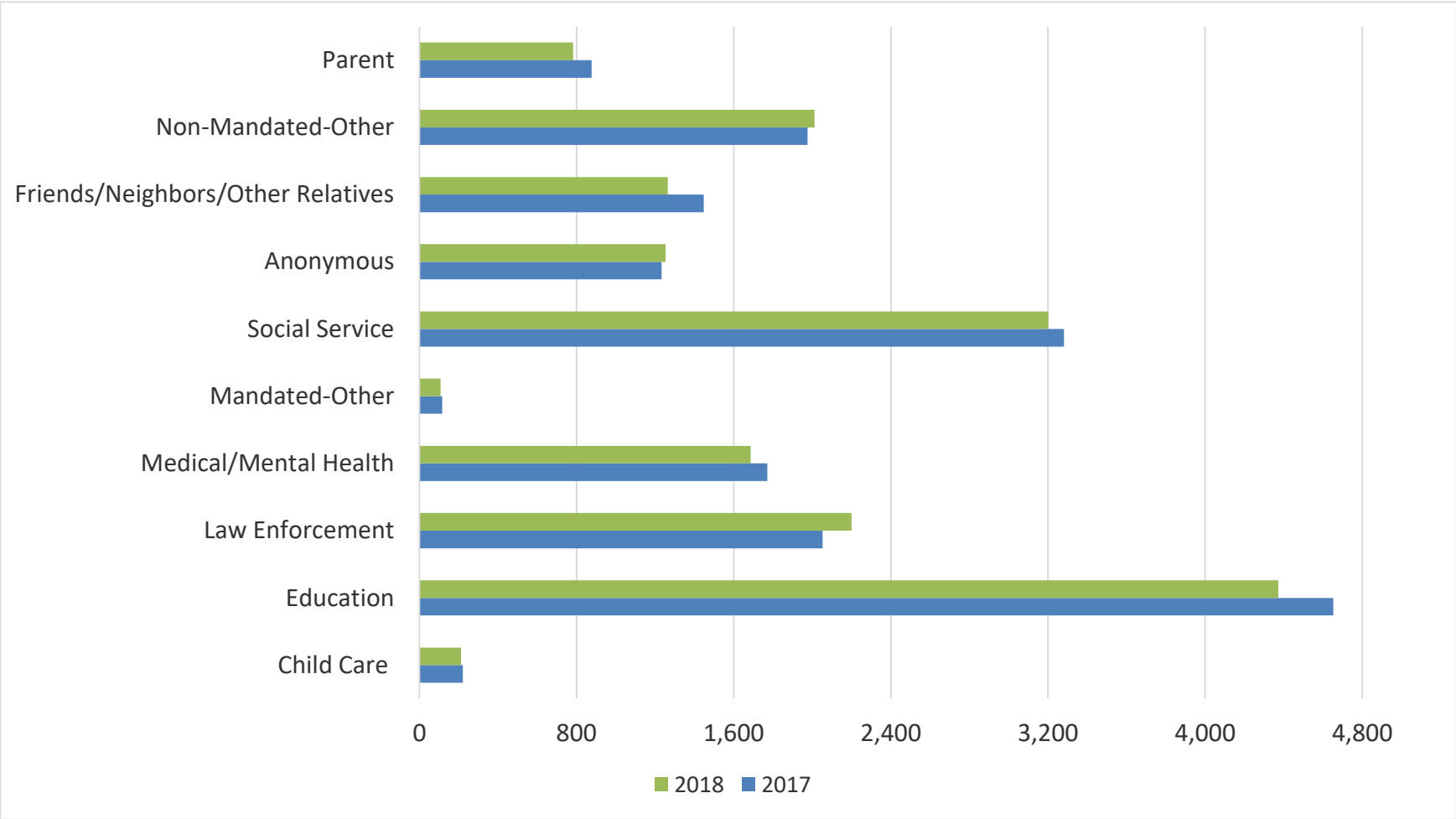
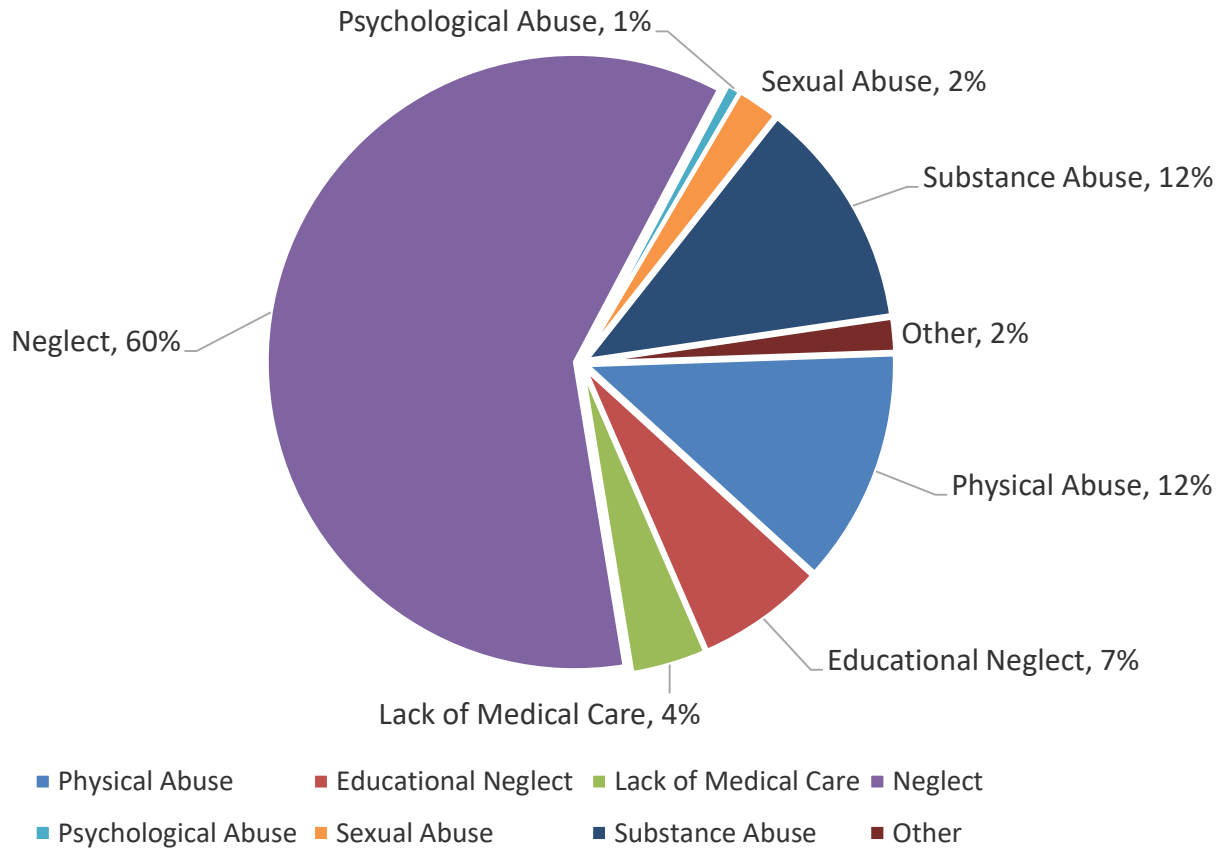


Table 2 - SCR Intakes by Reporter Group, SEPTEMBER 17 – NOVEMBER 17 and SEPTEMBER 18 – NOVEMBER 18

Year	Child Care/ Substitute Care Personnel	Educational Personnel	Law Enforcement	Medical/ Mental Health Personnel	Mandated- Other	Social Service Personnel	Anonymous	Friends/ Neighbors/ Other Relatives	Non- Mandated- Other	Parent	Foster Parent	*Total
Bronx												
2017	49	1,365	491	523	29	945	361	439	551	219	1	4,975
2018	73	1,321	502	455	27	935	316	371	571	203	1	4,775
% Change	49.0%	-3.2%	2.2%	-13.0%	-6.9%	-1.1%	-12.5%	-15.5%	3.6%	-7.3%	0.0%	-4.0%
Brooklyn												
2017	68	1,285	651	443	22	875	325	388	525	229	1	4,815
2018	38	1,176	665	405	29	798	374	331	515	177	0	4,508
% Change	-44.1%	-8.5%	2.2%	-8.6%	31.8%	-8.8%	15.1%	-14.7%	-1.9%	-22.7%	-100.0%	-6.4%
Manhattan												
2017	34	530	324	278	19	488	206	242	308	112	0	2,542
2018	27	516	372	287	17	483	212	197	333	121	1	2,567
% Change	-20.6%	-2.6%	14.8%	3.2%	-10.5%	-1.0%	2.9%	-18.6%	8.1%	8.0%	--	1.0%
Queens												
2017	27	1,074	377	338	27	603	212	243	360	147	1	3,412
2018	33	1,032	430	350	18	643	220	236	373	144	1	3,481
% Change	22.2%	-3.9%	14.1%	3.6%	-33.3%	6.6%	3.8%	-2.9%	3.6%	-2.0%	0.0%	2.0%
Staten Island												
2017	11	286	78	91	4	162	79	82	83	41	1	918
2018	9	234	86	86	2	123	76	78	72	25	0	791
% Change	-18.2%	-18.2%	10.3%	-5.5%	-50.0%	-24.1%	-3.8%	-4.9%	-13.3%	-39.0%	-100.0%	-13.8%
OSI												
2017	26	48	31	39	12	95	34	34	102	73	1	495
2018	28	40	32	56	14	84	35	27	107	79	3	505
% Change	7.7%	-16.7%	3.2%	43.6%	16.7%	-11.6%	2.9%	-20.6%	4.9%	8.2%	200.0%	2.0%
Other												
2017	6	65	100	59	3	113	16	19	47	55	1	589
2018	3	54	113	48	1	136	20	25	40	34	0	524
% Change	-50.0%	-16.9%	13.0%	-18.6%	-66.7%	20.4%	25.0%	31.6%	-14.9%	-38.2%	-100.0%	-11.0%
Citywide												
2017	221	4,653	2,052	1,771	116	3,281	1,233	1,447	1,976	876	6	17,746
2018	211	4,373	2,200	1,687	108	3,202	1,253	1,265	2,011	783	6	17,151
% Change	-4.5%	-6.0%	7.2%	-4.7%	-6.9%	-2.4%	1.6%	-12.6%	1.8%	-10.6%	0.0%	-3.4%

*There is a small number of intakes with unknown reporter that is included in the totals.

Figure 3: SCR Allegations, SEPTEMBER 18 – NOVEMBER 18



Total Allegations = 41,813

Allegations are grouped as follows: Physical Abuse - burn, fatality, fracture, choking, twisting, shaking, excessive corporal punishment, internal injuries, lacerations, bruises, welts, poisoning, noxious substances; Educational Neglect – educational neglect; Lack of Medical Care – lack of medical care; Neglect - inadequate guardianship, inadequate food, clothing, shelter, lack of supervision, malnutrition, failure to thrive, swelling, dislocations, sprains; Psychological Abuse - isolation, emotional neglect; Sexual Abuse – sexual abuse; Substance Abuse - parental drug use, child drug use; and Other - abandonment, inappropriate custodial conduct.

Table 3 - SCR Allegations, SEPTEMBER 17 – NOVEMBER 17 and SEPTEMBER 18 – NOVEMBER 18

Year	Physical Abuse	Educational Neglect	Lack of Medical Care	Neglect	Psychological Abuse	Sexual Abuse	Substance Abuse	Other	Total
Bronx									
2017	1,363	1,156	626	7,801	81	241	1,624	100	12,992
2018	1,400	1,048	549	7,374	93	254	1,551	123	12,392
% Change	2.7%	-9.3%	-12.3%	-5.5%	14.8%	5.4%	-4.5%	23.0%	-4.6%
Brooklyn									
2017	1,554	794	479	7,294	88	274	1,498	113	12,094
2018	1,372	752	387	6,495	67	233	1,285	193	10,784
% Change	-11.7%	-5.3%	-19.2%	-11.0%	-23.9%	-15.0%	-14.2%	70.8%	-10.8%
Manhattan									
2017	607	378	225	3200	24	96	754	33	5,317
2018	541	357	216	3030	32	114	597	87	4,974
% Change	-10.9%	-5.6%	-4.0%	-5.3%	33.3%	18.8%	-20.8%	163.6%	-6.5%
Queens									
2017	1,144	447	292	5,012	79	149	992	168	8,283
2018	1,172	424	298	4,917	65	158	947	201	8,182
% Change	2.4%	-5.1%	2.1%	-1.9%	-17.7%	6.0%	-4.5%	19.6%	-1.2%
Staten Island									
2017	250	161	136	1,494	11	35	342	58	2,487
2018	261	153	92	1,475	13	42	360	36	2,432
% Change	4.4%	-5.0%	-32.4%	-1.3%	18.2%	20.0%	5.3%	-37.9%	-2.2%
OSI									
2017	297	36	53	1,263	13	77	176	1	1,916
2018	277	33	58	1,234	10	62	156	2	1,832
% Change	-6.7%	-8.3%	9.4%	-2.3%	-23.1%	-19.5%	-11.4%	100.0%	-4.4%
Other									
2017	107	77	68	675	16	36	153	103	1,235
2018	129	46	42	698	16	47	142	97	1,217
% Change	20.6%	-40.3%	-38.2%	3.4%	0.0%	30.6%	-7.2%	-5.8%	-1.5%
Citywide									
2017	5,322	3,049	1,879	26,739	312	908	5,539	576	44,324
2018	5,152	2,813	1,642	25,223	296	910	5,038	739	41,813
% Change	-3.2%	-7.7%	-12.6%	-5.7%	-5.1%	0.2%	-9.0%	28.3%	-5.7%

**TABLE 4 - Child Welfare Prevention Cases
New and Closed
January 2015 - November 2018**

Month	New Cases	Closed Cases
2015		
Jan-15	736	792
Feb-15	910	751
Mar-15	1,131	831
Apr-15	987	932
May-15	921	999
Jun-15	1,080	930
Jul-15	906	1,217
Aug-15	898	1,064
Sep-15	768	964
Oct-15	754	889
Nov-15	751	807
Dec-15	1,015	881
2016		
Jan-16	797	770
Feb-16	900	795
Mar-16	1,029	978
Apr-16	835	892
May-16	890	966
Jun-16	996	935
Jul-16	842	1,069
Aug-16	897	1,006
Sep-16	820	850
Oct-16	776	627
Nov-16	728	490
Dec-16	816	462
2017		
Jan-17	550	449
Feb-17	602	920
Mar-17	864	1,032
Apr-17	645	780
May-17	790	925
Jun-17	908	944
Jul-17	765	852
Aug-17	875	864
Sep-17	841	747
Oct-17	870	762
Nov-17	778	737
Dec-17	817	728
2018		
Jan-18	724	567
Feb-18	776	783
Mar-18	879	776
Apr-18	792	613
May-18	755	857
Jun-18	736	837
Jul-18	808	856
Aug-18	892	954
Sep-18	751	755
Oct-18	852	768
Nov-18	746	704

**Table 5 - Referrals to Child Welfare Prevention Services by Source
January 2015 - November 2018**

Month	Total Referrals	Division of Child Protection	Foster Care Agencies	PPRS Transfer	School	Self	Other Sources*
2015							
Jan-15	1,430	74.4%	1.6%	8.7%	1.8%	3.8%	9.7%
Feb-15	1,538	76.5%	0.8%	8.1%	1.8%	4.7%	8.2%
Mar-15	1,798	74.6%	0.9%	7.3%	1.6%	4.8%	10.8%
Apr-15	1,719	78.2%	1.3%	7.2%	0.6%	3.5%	9.1%
May-15	1,561	77.2%	1.0%	5.1%	1.5%	4.5%	10.8%
Jun-15	1,716	77.4%	1.1%	7.7%	1.2%	3.5%	9.1%
Jul-15	1,511	79.6%	0.9%	7.2%	0.3%	3.8%	8.2%
Aug-15	1,418	79.3%	2.2%	7.8%	0.2%	3.1%	7.5%
Sep-15	1,209	72.1%	2.8%	10.4%	0.5%	5.5%	8.6%
Oct-15	1,338	70.4%	1.9%	8.3%	2.1%	5.8%	11.6%
Nov-15	1,220	68.2%	1.8%	9.6%	1.4%	6.2%	12.8%
Dec-15	1,526	73.5%	1.6%	8.0%	2.0%	5.0%	9.9%
2016							
Jan-16	1,370	73.6%	1.6%	8.2%	0.7%	5.4%	10.6%
Feb-16	1,436	75.8%	2.2%	7.8%	1.0%	3.8%	9.3%
Mar-16	1,557	72.0%	2.1%	8.8%	1.0%	4.6%	11.4%
Apr-16	1,378	76.1%	1.5%	7.4%	1.5%	3.5%	10.0%
May-16	1,386	73.4%	1.4%	8.7%	1.0%	4.7%	10.8%
Jun-16	1,564	77.2%	2.4%	6.2%	1.5%	4.1%	8.6%
Jul-16	1,338	80.3%	1.7%	6.4%	1.0%	4.2%	6.4%
Aug-16	1,385	79.1%	1.8%	7.1%	0.4%	4.0%	7.6%
Sep-16	1,297	77.8%	2.1%	7.5%	0.8%	4.5%	7.4%
Oct-16	1,247	70.1%	2.0%	7.6%	1.5%	5.9%	12.9%
Nov-16	1,229	67.8%	2.0%	7.8%	1.2%	5.5%	15.8%
Dec-16	1,175	76.0%	1.5%	7.1%	1.3%	3.8%	10.3%
2017							
Jan-17	1,046	78.5%	1.4%	6.7%	0.7%	3.1%	9.7%
Feb-17	1,067	77.7%	0.8%	6.7%	0.8%	3.8%	10.1%
Mar-17	1,383	79.1%	0.6%	6.9%	0.9%	4.0%	8.5%
Apr-17	1,116	81.2%	1.0%	5.9%	1.1%	1.4%	9.4%
May-17	1,335	81.9%	0.9%	5.5%	1.3%	2.8%	7.6%
Jun-17	1,449	82.3%	0.8%	5.9%	1.2%	2.9%	6.9%
Jul-17	1,273	83.3%	0.9%	7.9%	0.7%	1.9%	5.3%
Aug-17	1,429	82.7%	0.6%	9.3%	0.3%	1.7%	5.2%
Sep-17	1,383	79.6%	1.6%	7.7%	0.8%	2.8%	7.4%
Oct-17	1,489	77.5%	1.5%	7.5%	1.0%	3.1%	9.4%
Nov-17	1,235	75.1%	1.5%	8.8%	2.2%	3.6%	8.8%
Dec-17	1,227	70.5%	1.6%	10.2%	2.4%	3.7%	11.5%
2018							
Jan-18	1,399	74.5%	1.5%	10.7%	1.4%	2.9%	9.0%
Feb-18	1,302	76.8%	1.5%	7.5%	1.3%	3.5%	9.4%
Mar-18	1,396	79.7%	1.5%	7.4%	1.2%	2.6%	7.5%
Apr-18	1,383	80.0%	1.2%	5.9%	1.1%	3.1%	8.7%
May-18	1,189	78.8%	1.3%	7.0%	1.0%	3.3%	8.7%
Jun-18	1,284	81.9%	0.5%	7.6%	0.9%	3.2%	6.0%
Jul-18	1,403	82.5%	0.7%	8.3%	0.6%	2.4%	5.5%
Aug-18	1,391	82.1%	1.7%	6.8%	0.4%	2.7%	6.3%
Sep-18	1,135	84.4%	1.5%	7.0%	0.9%	4.1%	2.1%
Oct-18	1,344	78.5%	1.5%	8.0%	1.2%	3.9%	6.9%
Nov-18	1,102	76.0%	1.1%	9.5%	1.0%	3.7%	8.6%

*Other Community Sources includes the Department of Homeless Services, Family Court, FAP, Hospitals and Medical facilities, the NYC Housing Authority, Probation, and Sponsor Agencies.