

# FLASH

monthly indicator

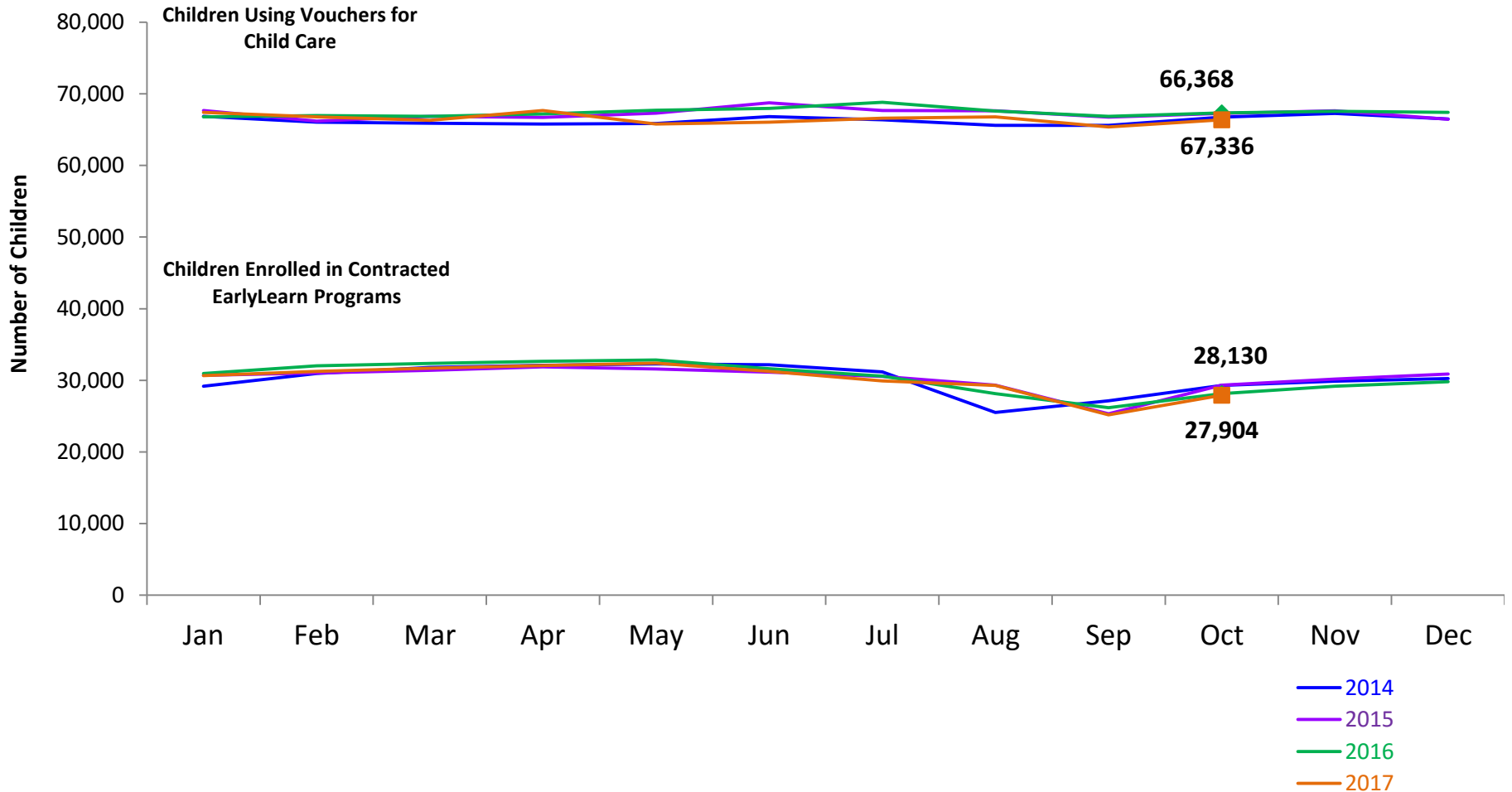
# REPORT

---

November 2017

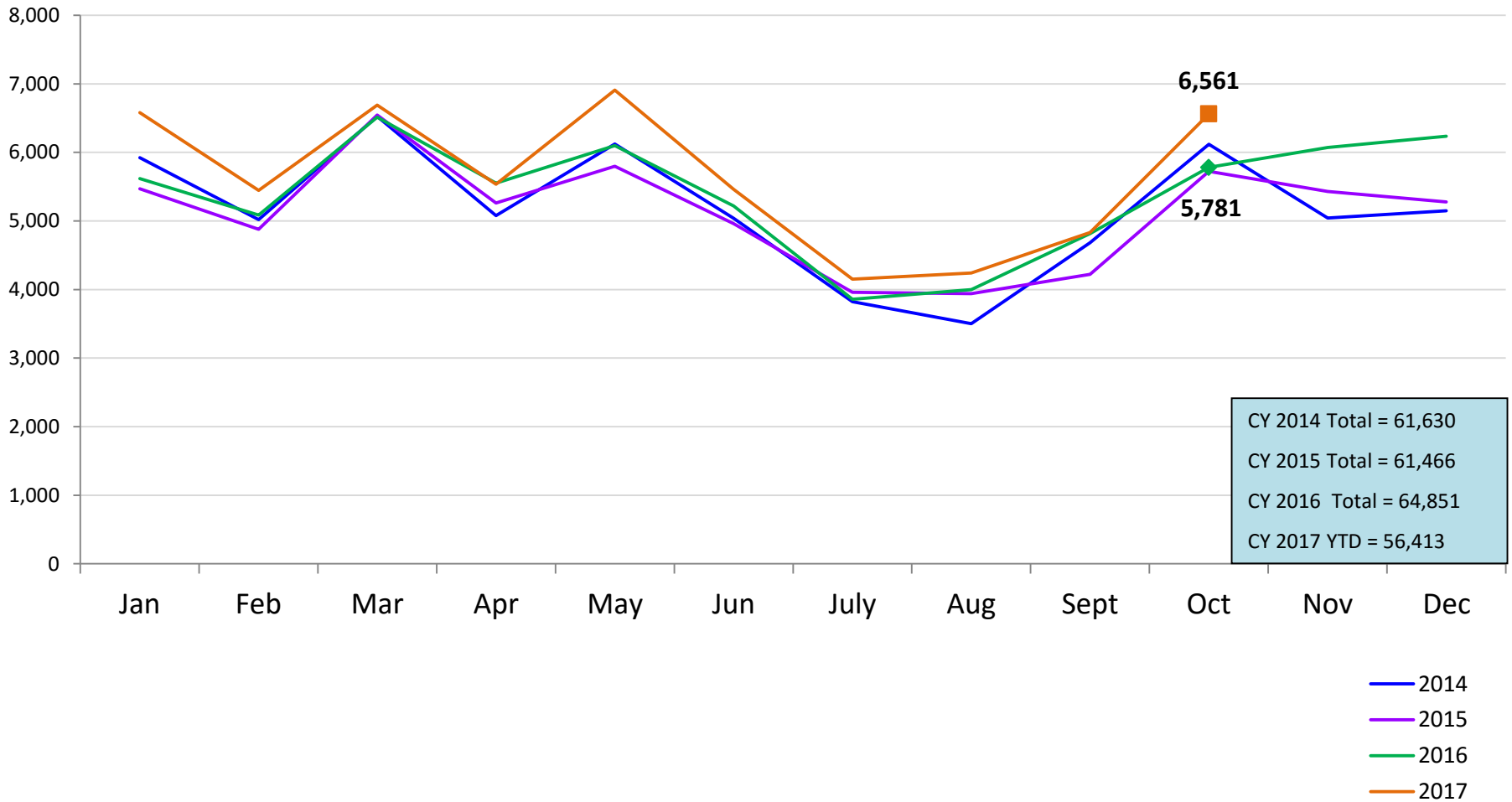
## Children Enrolled in Contracted EarlyLearn Programs and Children Using Vouchers for Child Care

January 2014 – October 2017(End of Month)



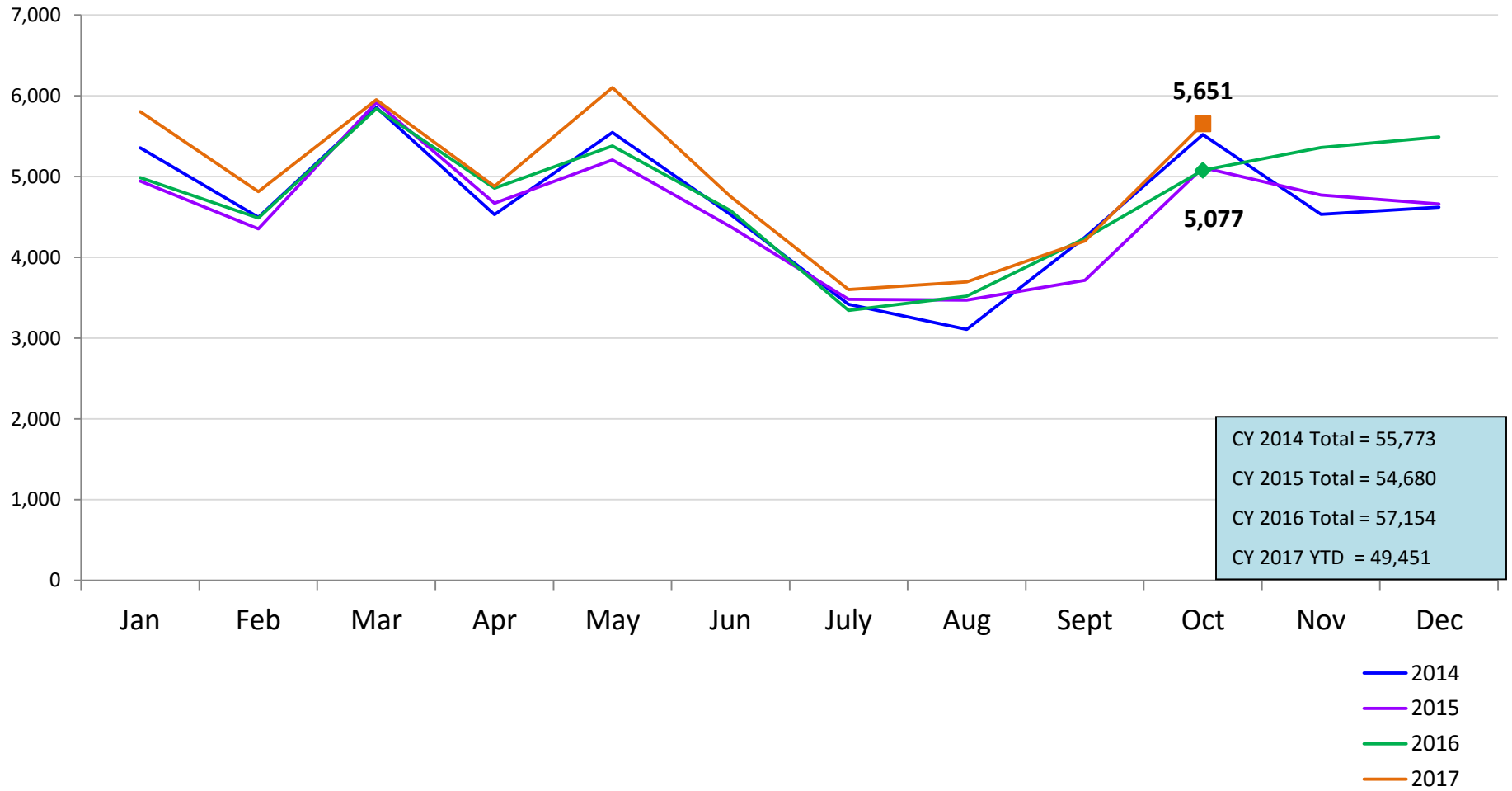
### SCR Intakes

January 2014 – October 2017 (Monthly Total)



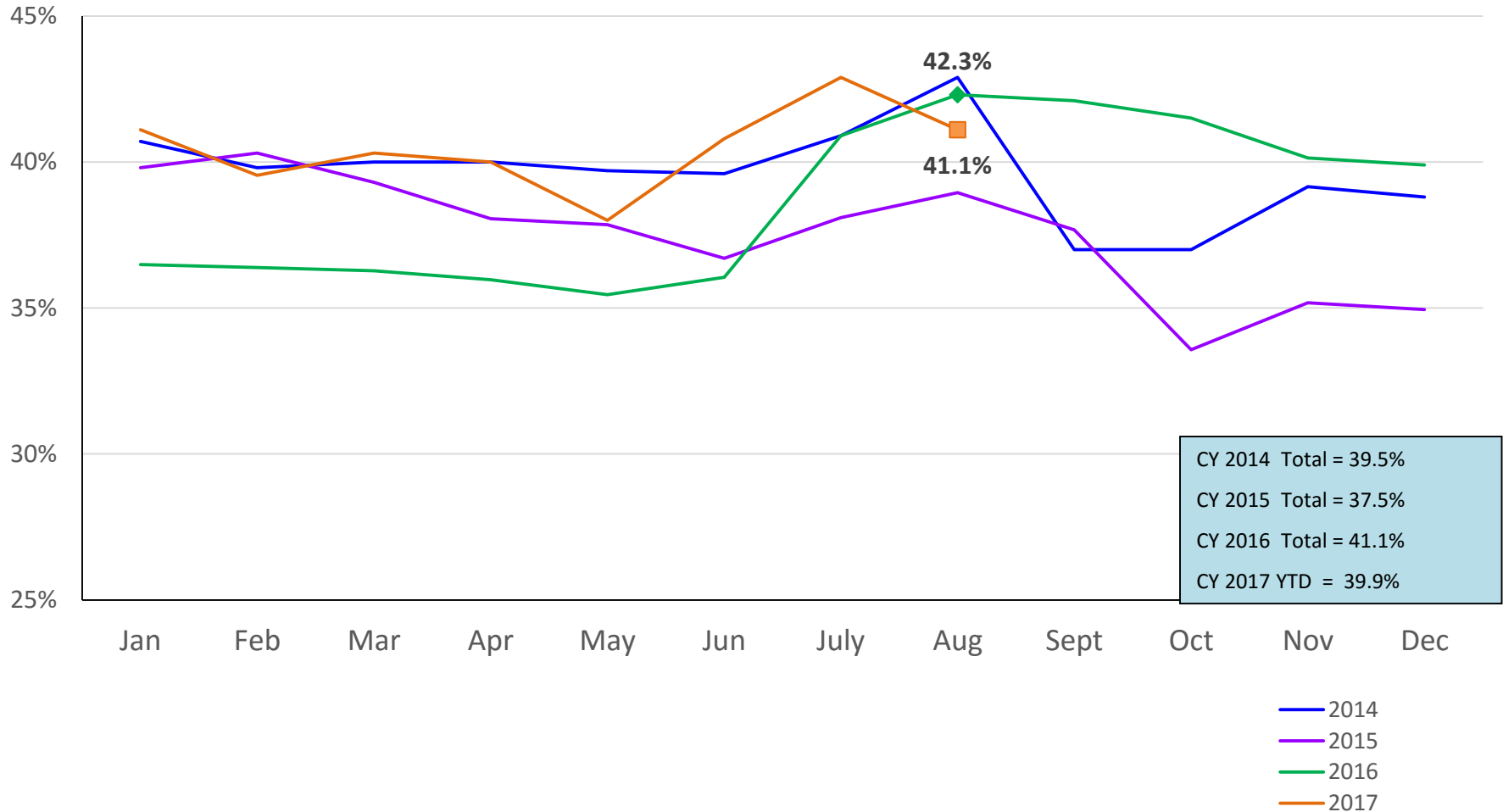
### SCR Consolidated Investigations

January 2014 – October 2017 (Monthly Total)



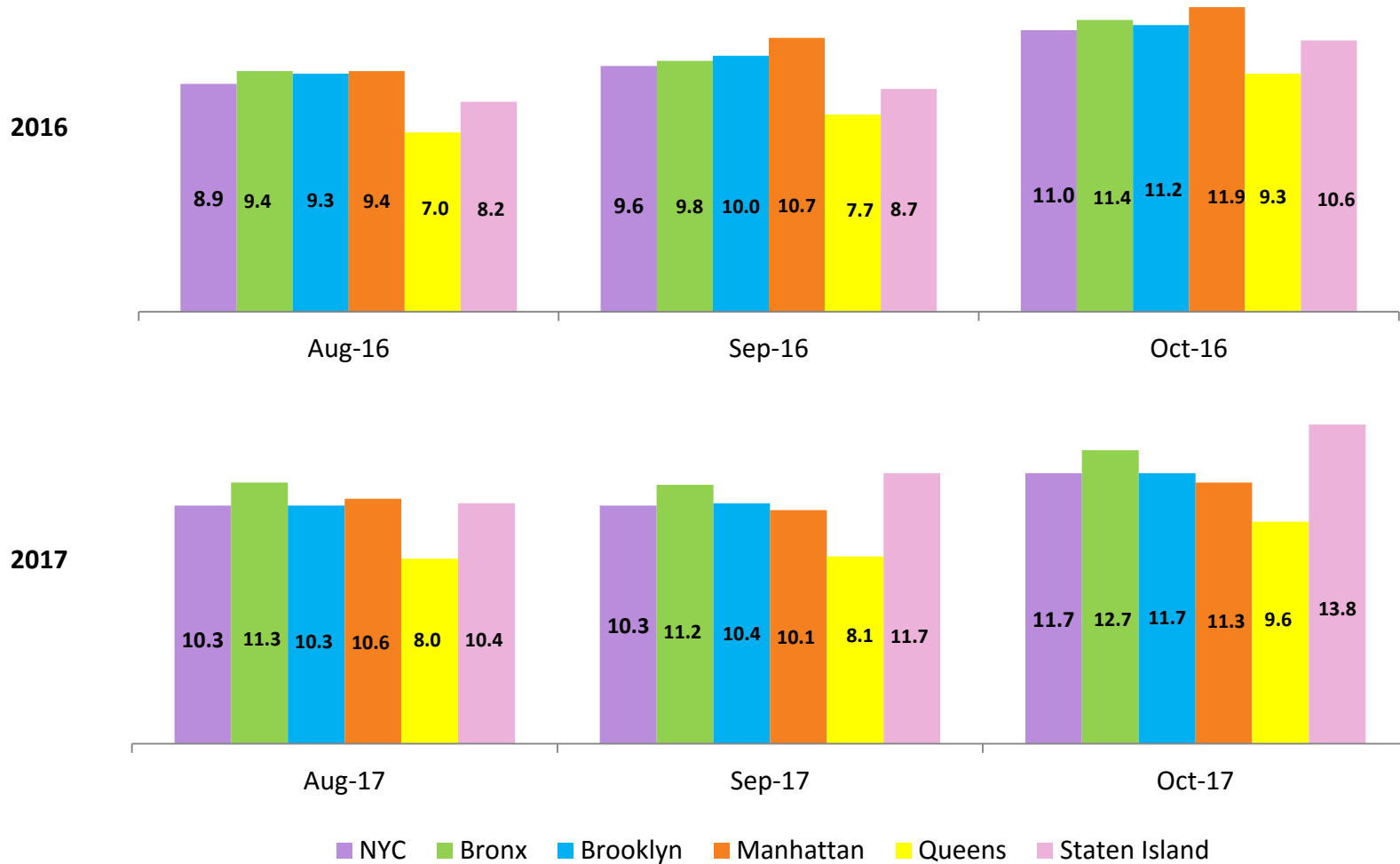
### SCR Investigation Indication Rate

January 2014 – August 2017



### Average P/D Combined Caseload\*

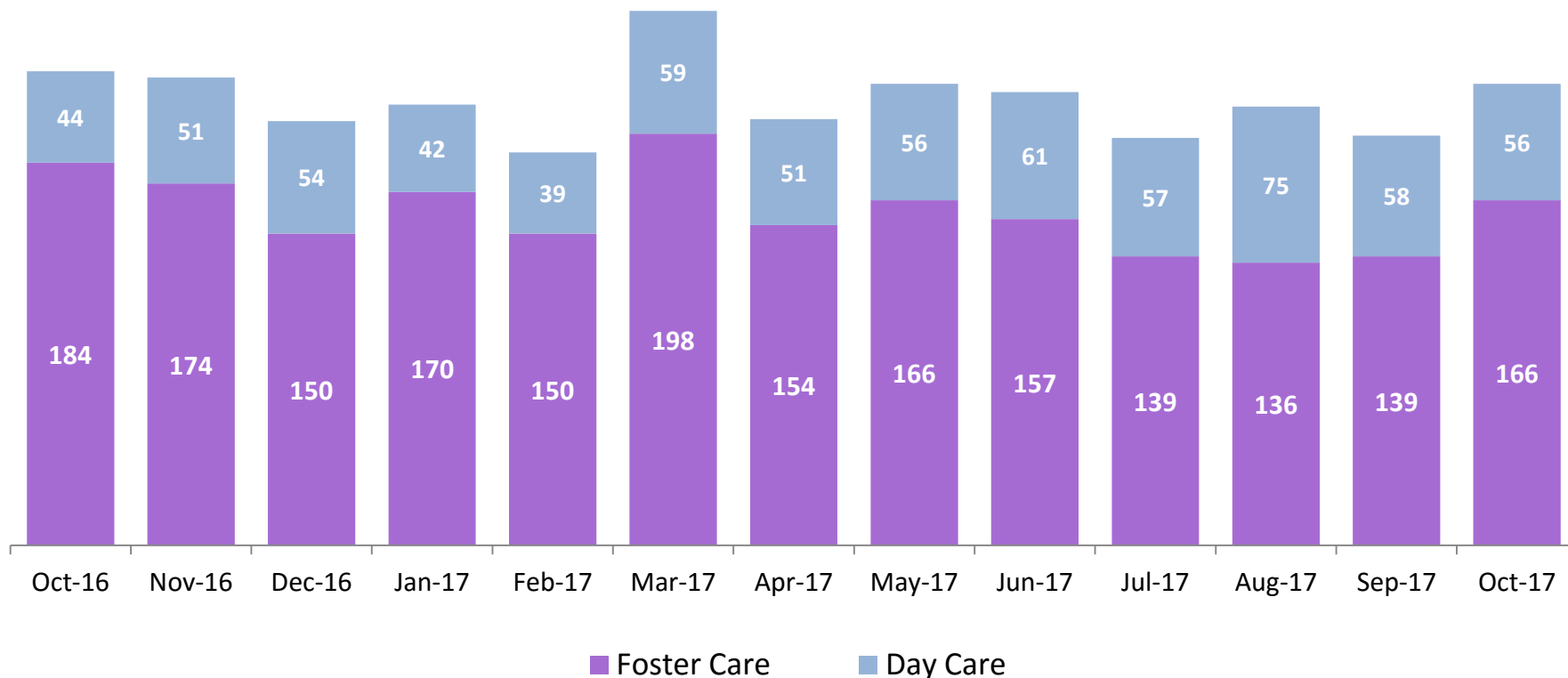
August – October 2016 & August – October 2017



\* Caseloads are of protective/diagnostic caseworkers only and exclude the caseloads carried by Level I and Level II Supervisors.

### OSI Foster Care and Day Care Investigations

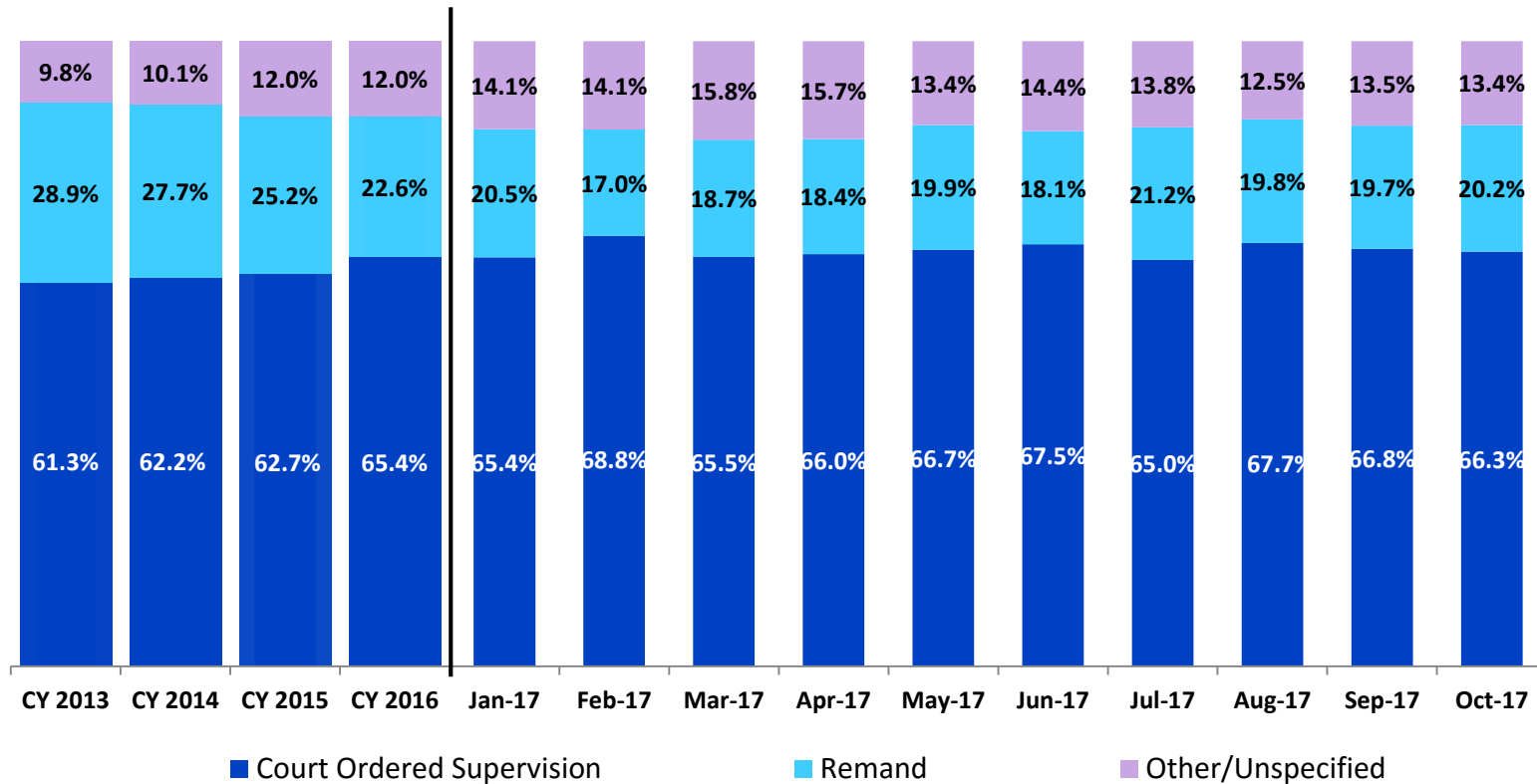
October 2016 – October 2017



	Oct 2016	Nov 2016	Dec 2016	Jan 2017	Feb 2017	Mar 2017	Apr 2017	May 2017	Jun 2017	Jul 2017	Aug 2017	Sep 2017	Oct 2017
Number of Investigations	228	225	204	212	189	257	205	222	218	196	211	197	222

### Article 10 Filings and Initial Hearing Outcomes, Children

CY 2013 – October 2017



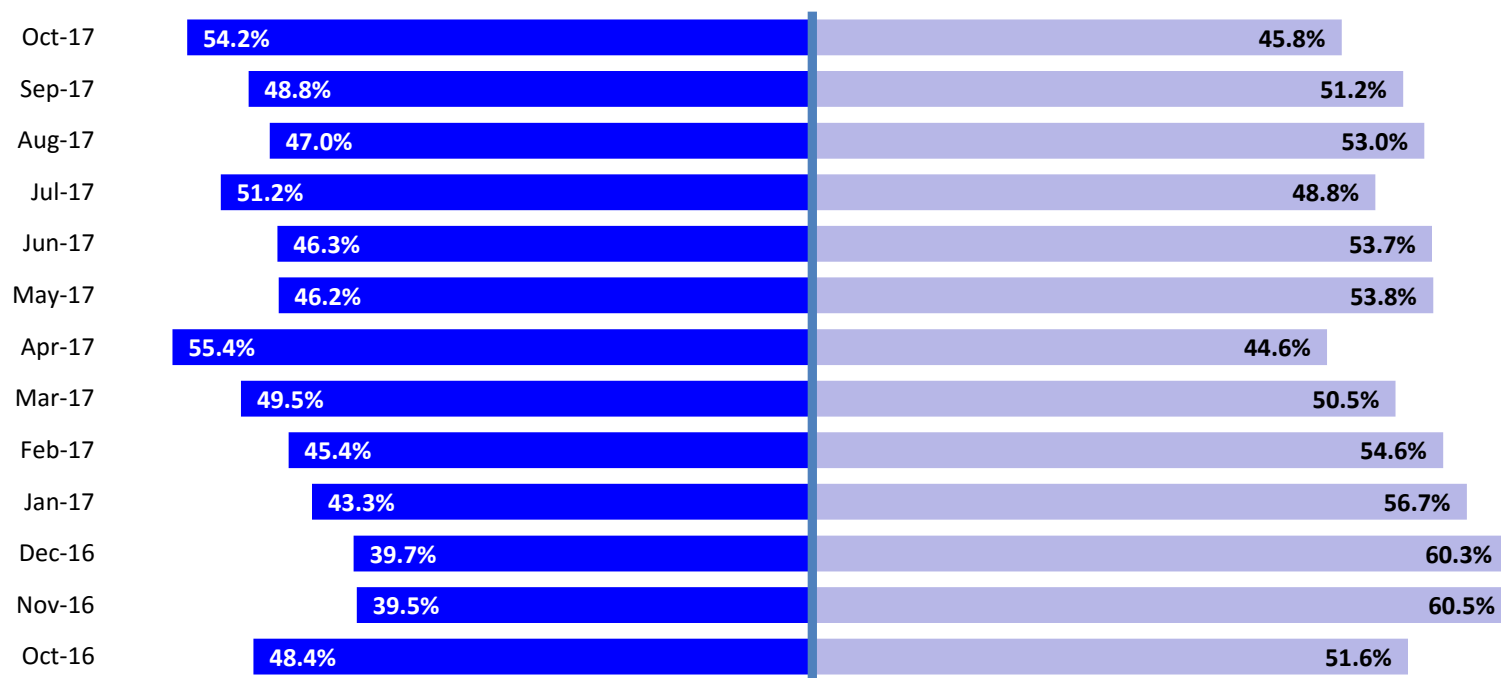
	CY 2013	CY 2014	CY 2015	CY 2016	Jan 2017	Feb 2017	Mar 2017	April 2017	May 2017	Jun 2017	Jul 2017	Aug 2017	Sep 2017	Oct 2017
Children with Article 10 Filings	9,318	9,900	10,243	11,453	1,354	1,139	1,553	1,307	1,533	1,500	1,336	1,429	1,297	1,606

Note: The category “Other/Unspecified” includes released with no supervision, no order issued and no outcome specified.



### Remands Approved at Initial Article 10 Hearing by Removal Status

October 2016 – October 2017

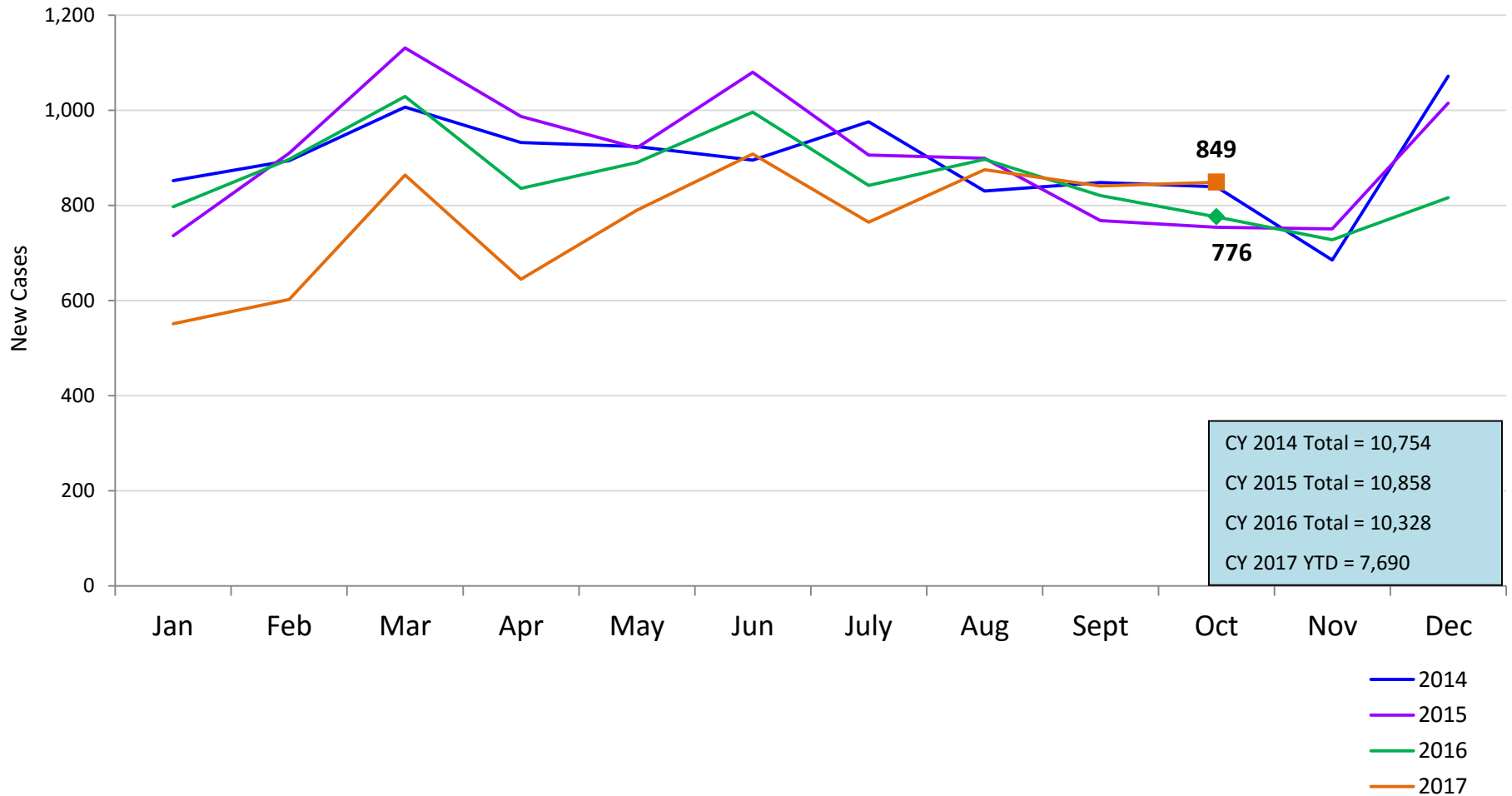


■ Pre-Filing Emergency Removals (court approved at initial hearing) ■ Post-Filing Removals (court ordered at initial hearing)

	Oct 2016	Nov 2016	Dec 2016	Jan 2017	Feb 2017	Mar 2017	Apr 2017	May 2017	Jun 2017	Jul 2017	Aug 2017	Sep 2017	Oct 2017
Children Remanded	312	223	287	277	194	291	240	305	272	283	283	256	325

### New Child Welfare Preventive Cases\*

January 2014 – October 2017



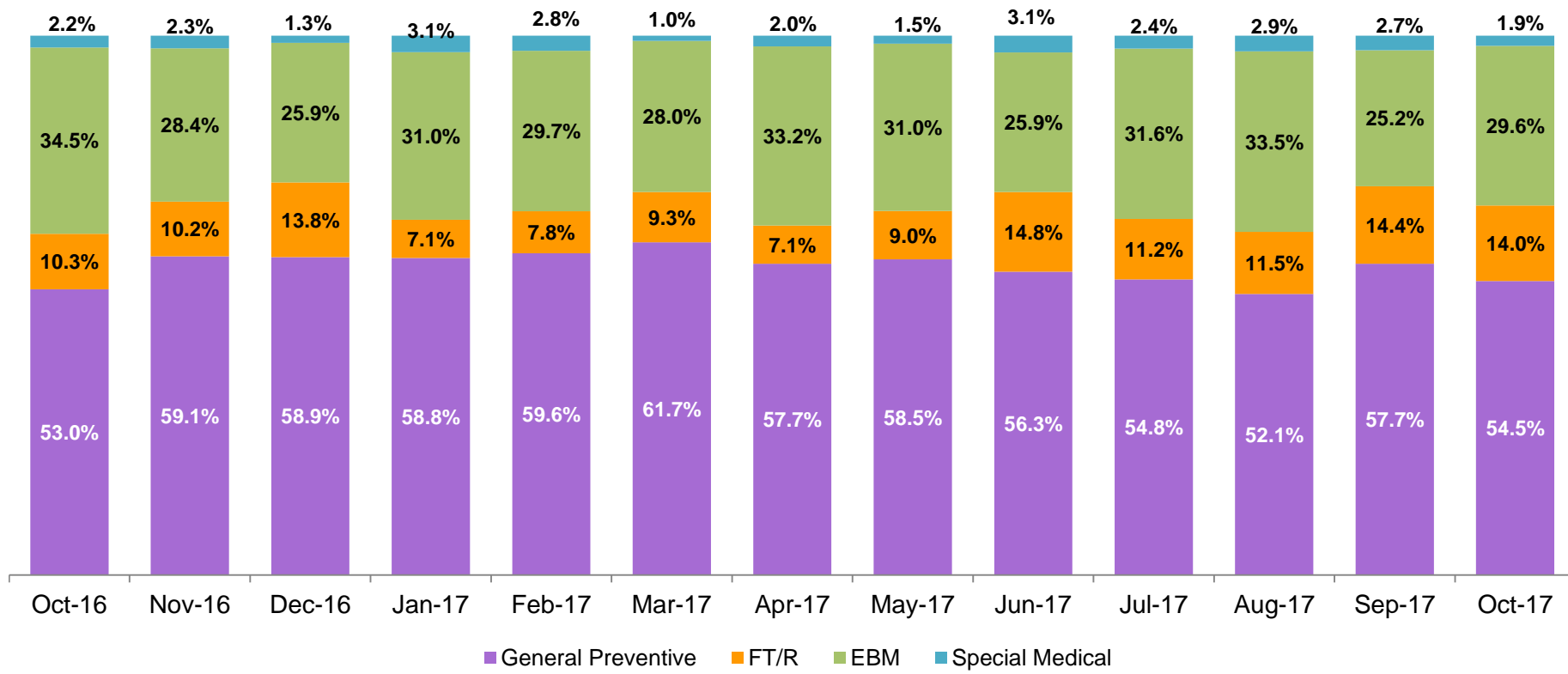
CY 2014 Total = 10,754  
 CY 2015 Total = 10,858  
 CY 2016 Total = 10,328  
 CY 2017 YTD = 7,690

- 2014
- 2015
- 2016
- 2017

\* New preventive cases do not include cases transferred from one preventive program to another. See Pages 33 and 34 of the Appendix for supporting data.

### New Child Welfare Preventive Cases by Program Type \*

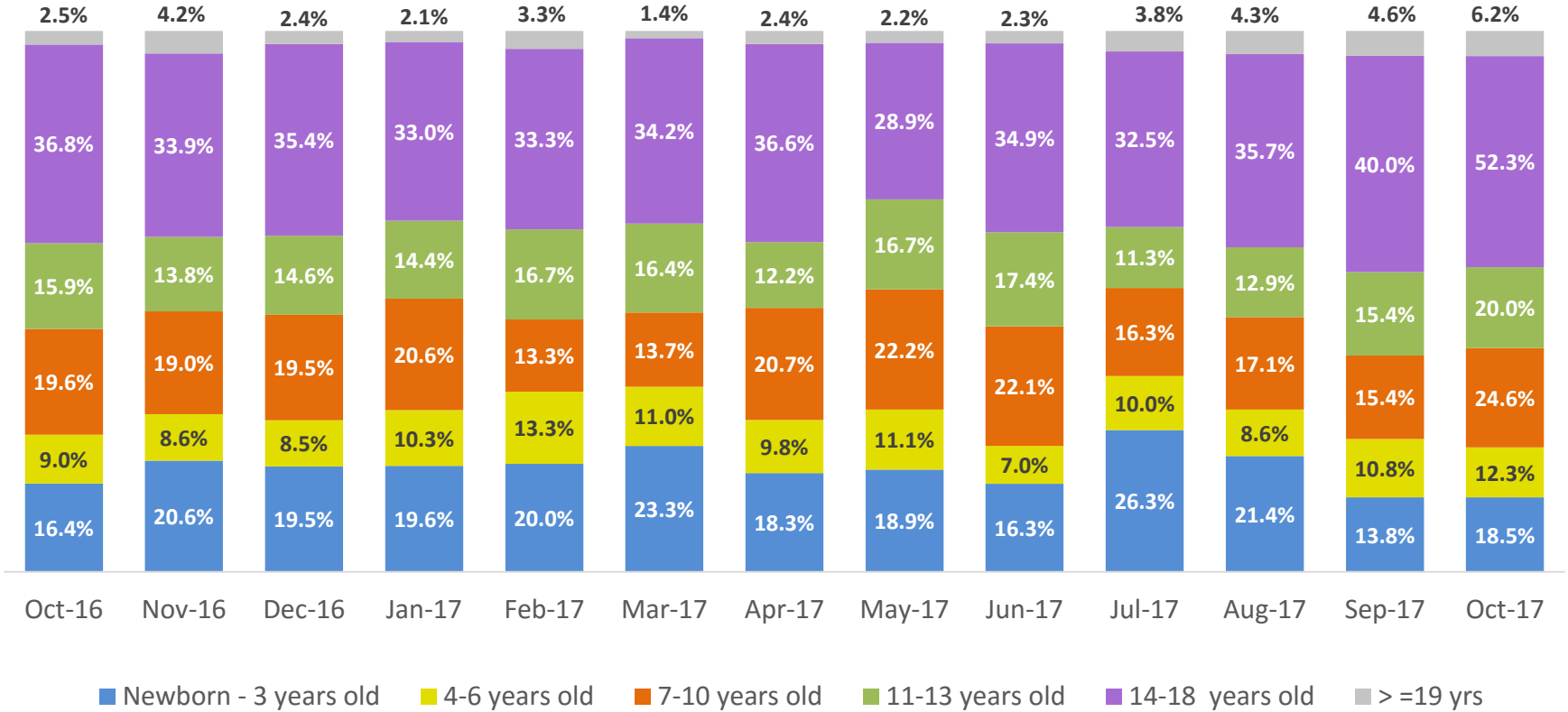
October 2016 – October 2017



	Oct 2016	Nov 2016	Dec 2016	Jan 2017	Feb 2017	Mar 2017	Apr 2017	May 2017	Jun 2017	Jul 2017	Aug 2017	Sep 2017	Oct 2017
Number of New Preventive Cases	776	728	816	551	602	864	645	790	908	765	875	841	849

\* New preventive cases exclude cases transferred from one preventive program to another.

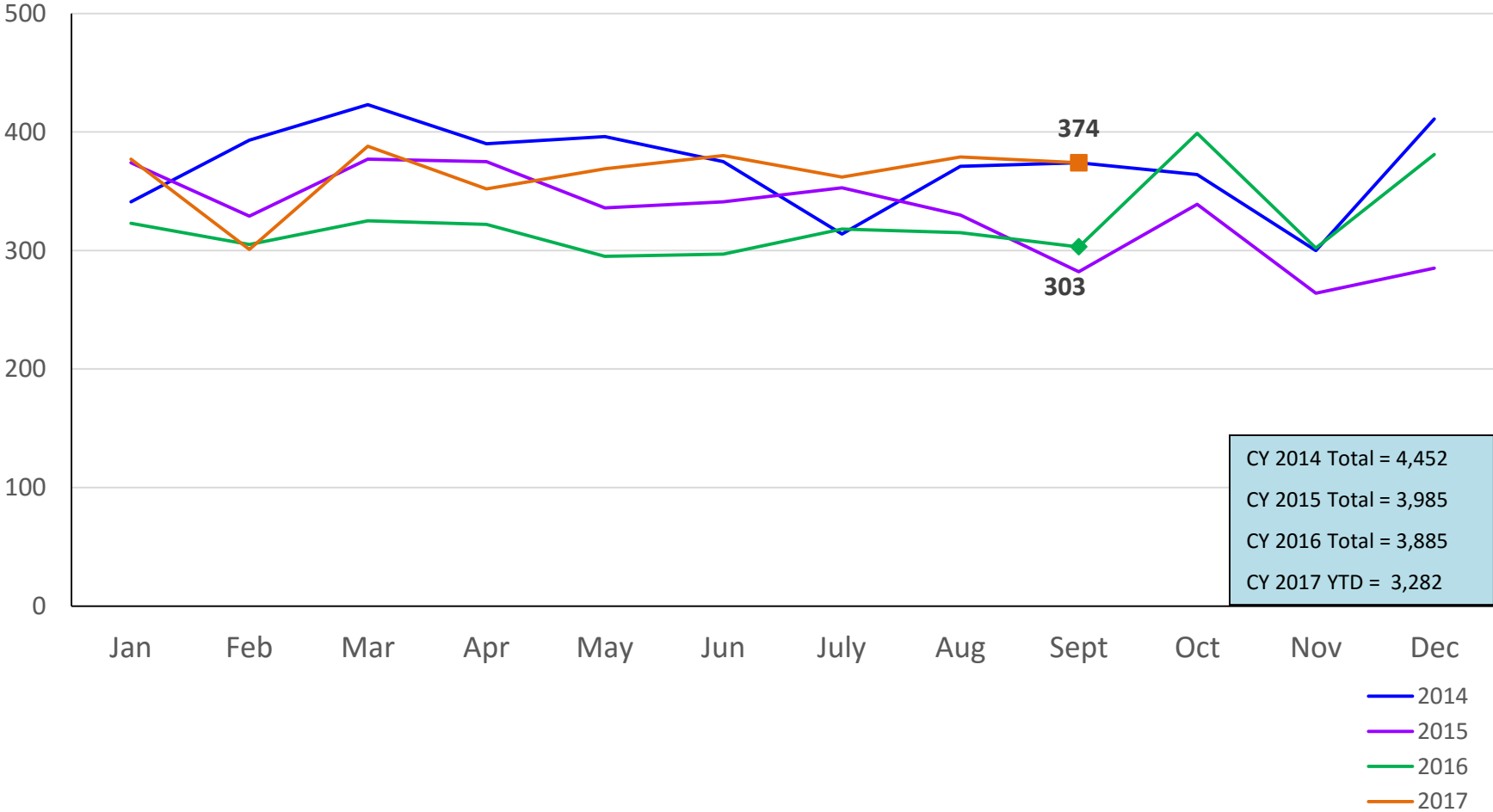
### Average Daily Children’s Center Population October 2016 – October 2017



	Oct 2016	Nov 2016	Dec 2016	Jan 2017	Feb 2017	Mar 2017	Apr 2017	May 2017	Jun 2017	Jul 2017	Aug 2017	Sep 2017	Oct 2017
Average Number of Children	71	62	82	97	60	73	82	90	86	80	70	65	87

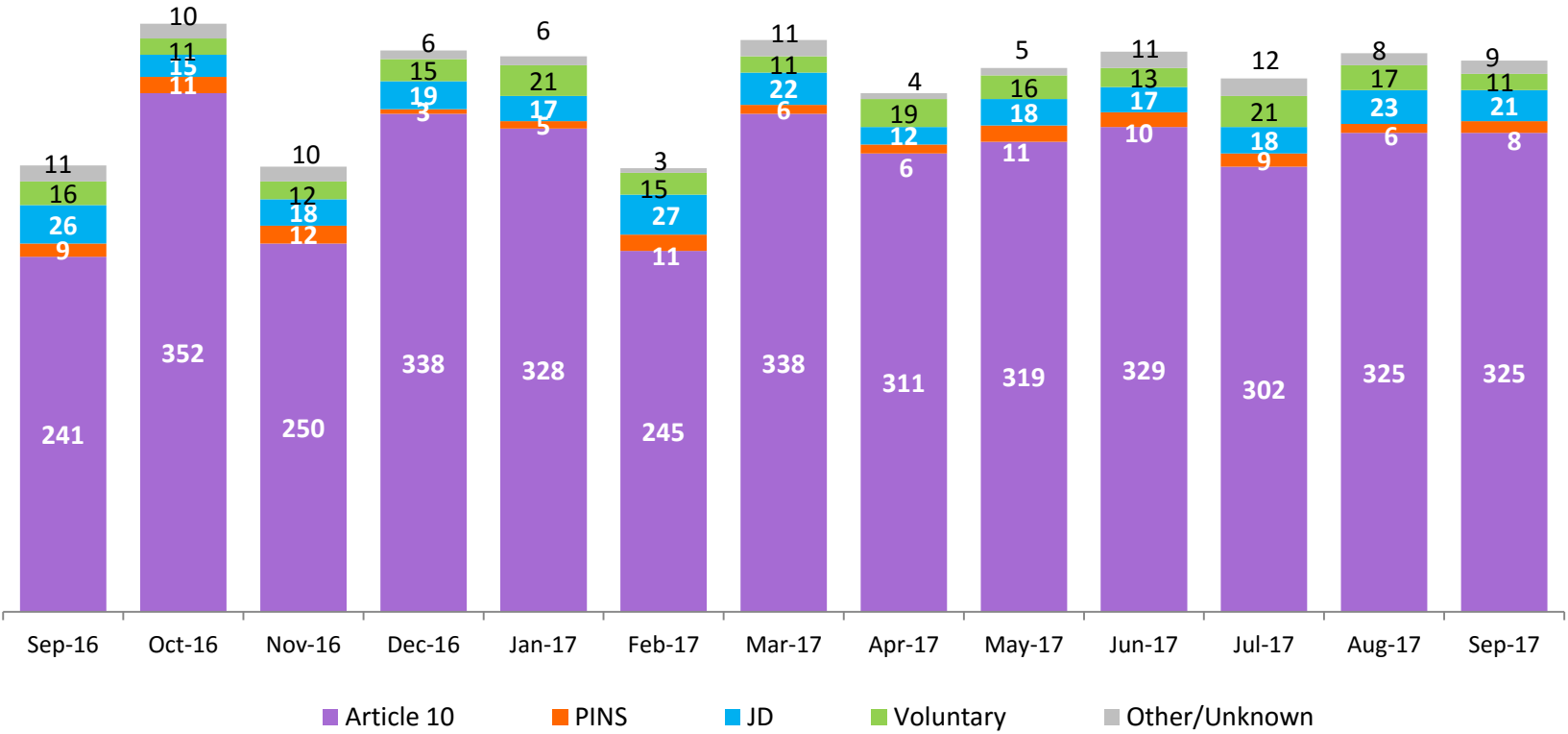
### New Monthly Placements of Children into Foster Care

January 2014 – September 2017



### Reason for New Placements of Children into Foster Care

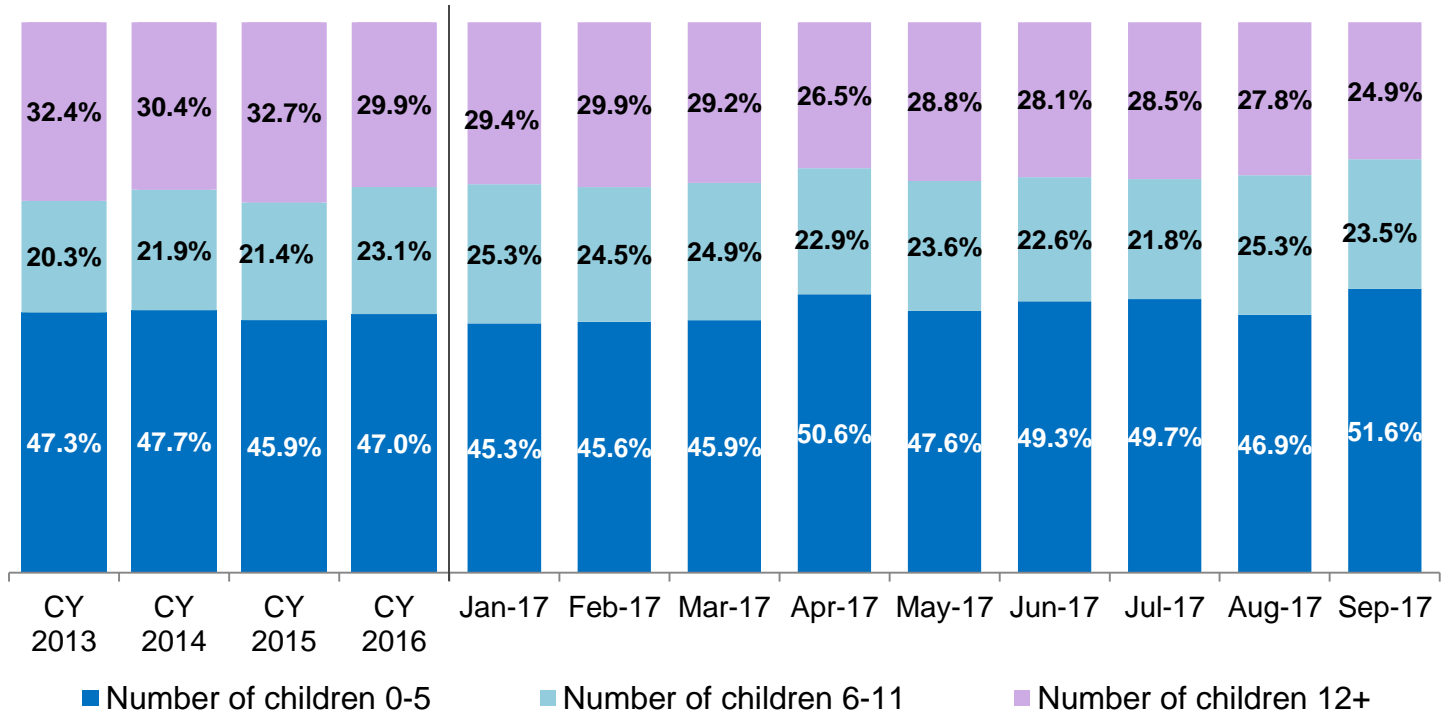
September 2016 – September 2017



	Sep 2016	Oct 2016	Nov 2016	Dec 2016	Jan 2017	Feb 2017	Mar 2017	Apr 2017	May 2017	Jun 2017	Jul 2017	Aug 2017	Sep 2017
Number of Placements	303	399	302	381	377	301	388	352	369	380	362	379	374

### New Placements of Children into Foster Care\* by Age

CY 2013 - September 2017

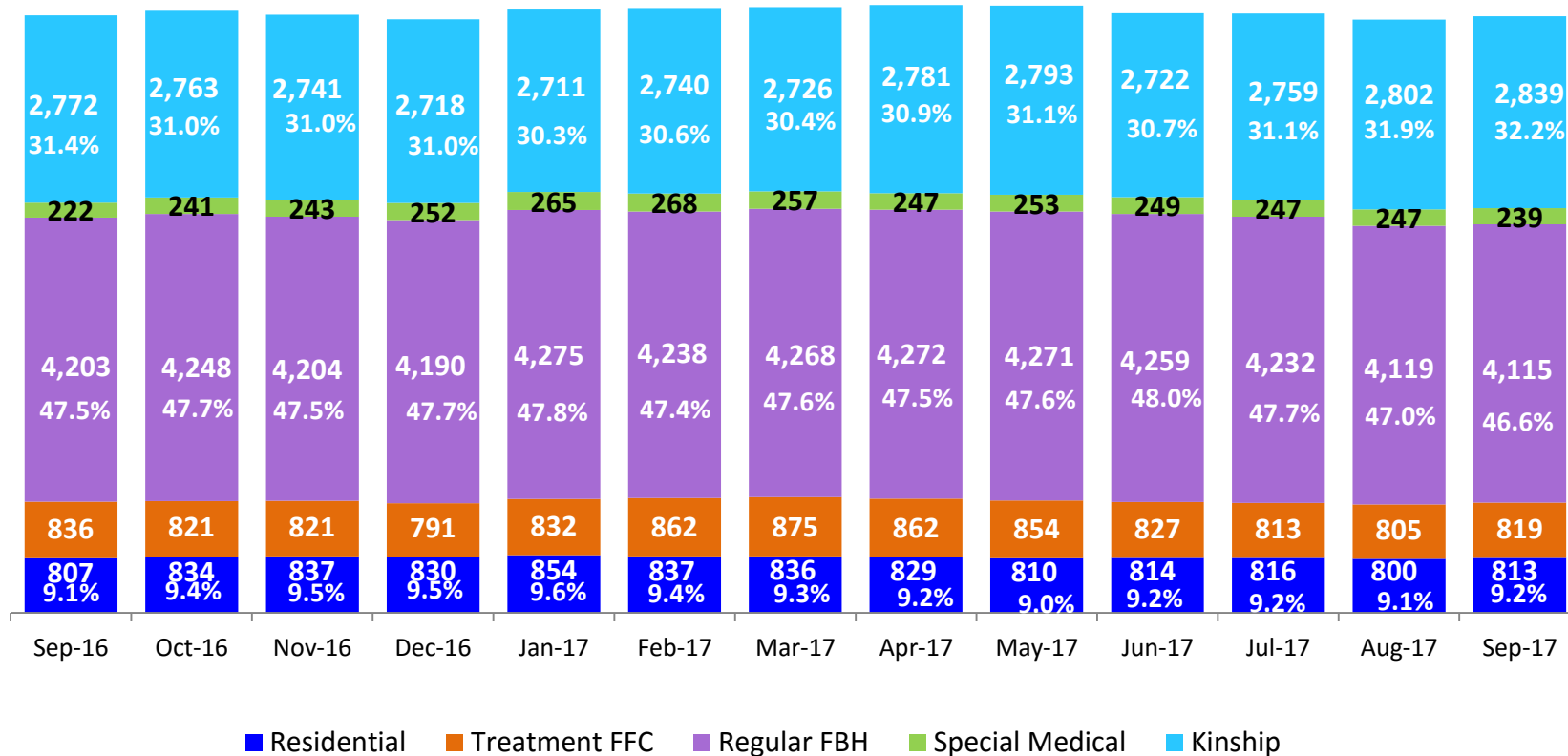


	CY 2013	CY 2014	CY 2015	CY 2016	Jan 2017	Feb 2017	Mar 2017	Apr 2017	May 2017	Jun 2017	Jul 2017	Aug 2017	Sep 2017
Number of Placements	4,283	4,160	3,760	3,647	360	274	366	340	351	363	344	356	353

\*Excludes CTH placements.

### Children in Foster Care \*

September 2016 – September 2017 (end of month)



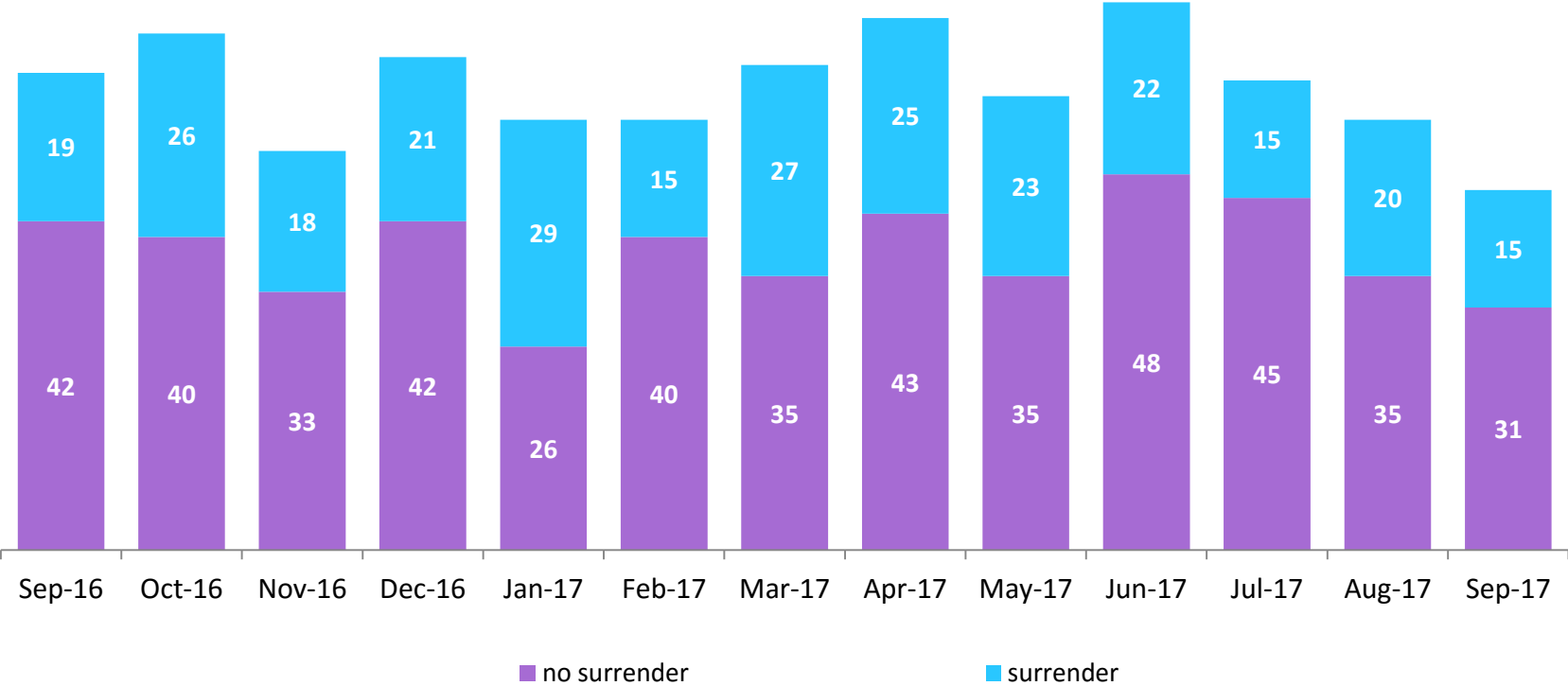
	Sep 2016	Oct 2016	Nov 2016	Dec 2016	Jan 2017	Feb 2017	Mar 2017	Apr 2017	May 2017	Jun 2017	Jul 2017	Aug 2017	Sep 2017
Number in Foster Care	8,840	8,907	8,846	8,781	8,937	8,945	8,962	8,991	8,981	8,871	8,867	8,773	8,825

\*Excludes CTH placements and includes children in 24 hour care and approximately 200 young children who are living in foster homes or residential care facilities with their mothers who are in foster care (8D children).



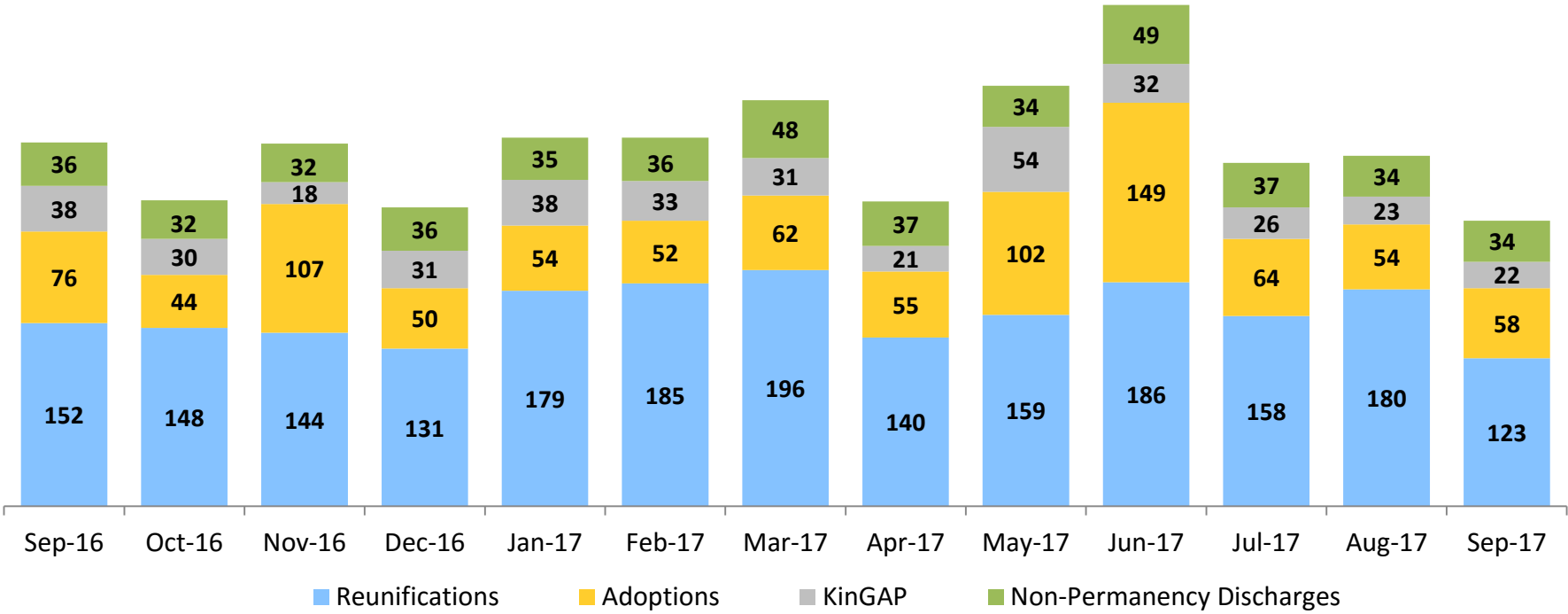
### Children Freed for Adoption, Surrender by at Least One Parent

September 2016 – September 2017



	Sep 2016	Oct 2016	Nov 2016	Dec 2016	Jan 2017	Feb 2017	Mar 2017	Apr 2017	May 2017	Jun 2017	Jul 2017	Aug 2017	Sep 2017
Number Freed for Adoption	61	66	51	63	55	55	62	68	58	70	60	55	46

### Permanency and Non-Permanency\* Discharges from Foster Care\*\* September 2016 – September 2017

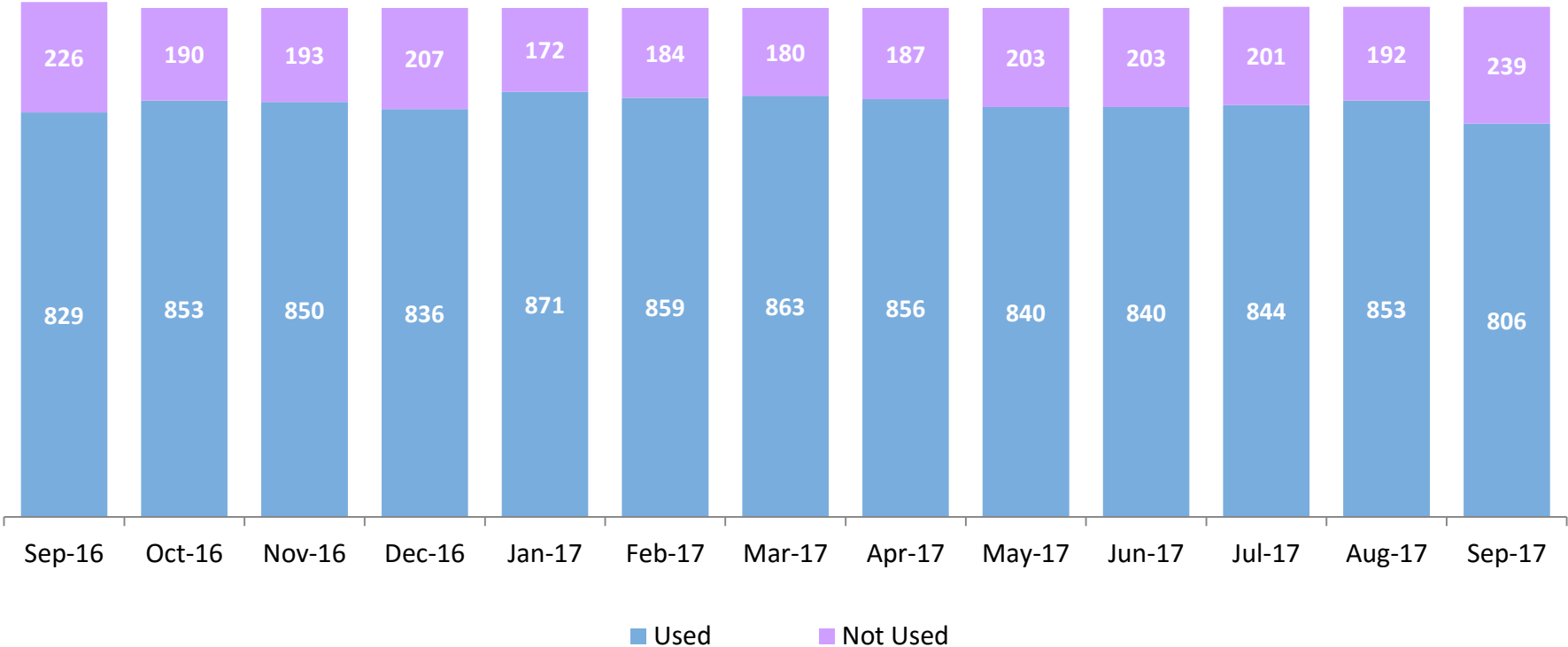


	Sep 2016	Oct 2016	Nov 2016	Dec 2016	Jan 2017	Feb 2017	Mar 2017	Apr 2017	May 2017	Jun 2017	Jul 2017	Aug 2017	Sep 2017
Number of Discharges	302	254	301	248	306	306	337	253	349	416	285	191	237

\*Non-permanency discharges include AWOL, APPLA , other discharge destinations such as psychiatric institutions and correctional facilities and discharges with unspecified destinations.

\*\*Excludes discharges of youth who entered care in CTH.

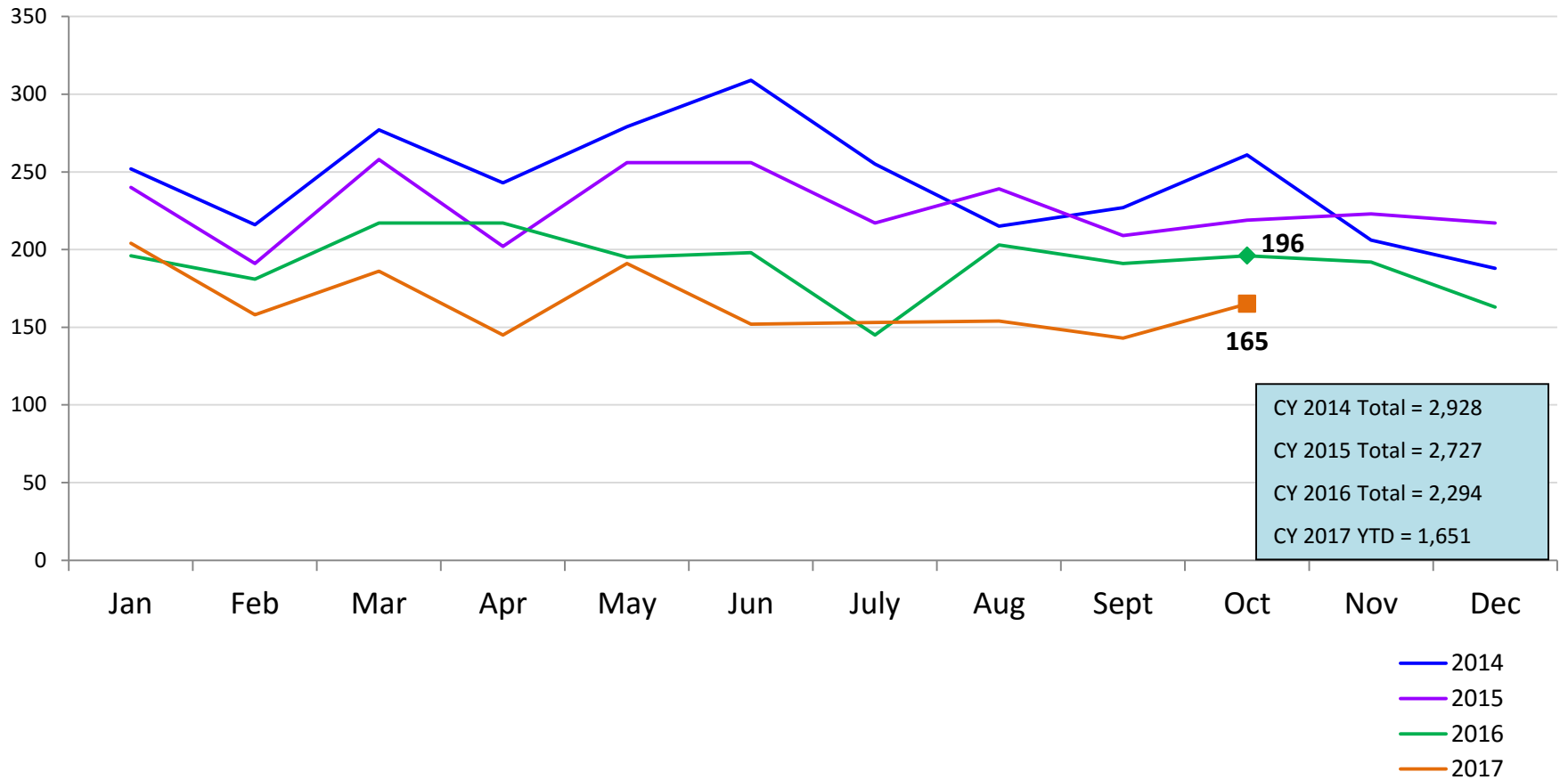
### Residential Care Capacity and Utilization September 2016 – September 2017



	Sep 2016	Oct 2016	Nov 2016	Dec 2016	Jan 2017	Feb 2017	Mar 2017	Apr 2017	May 2017	Jun 2017	Jul 2017	Aug 2017	Sep 2017
Capacity	1,055	1,043	1,043	1,043	1,043	1,043	1,043	1,043	1,043	1,043	1,045	1,045	1,045

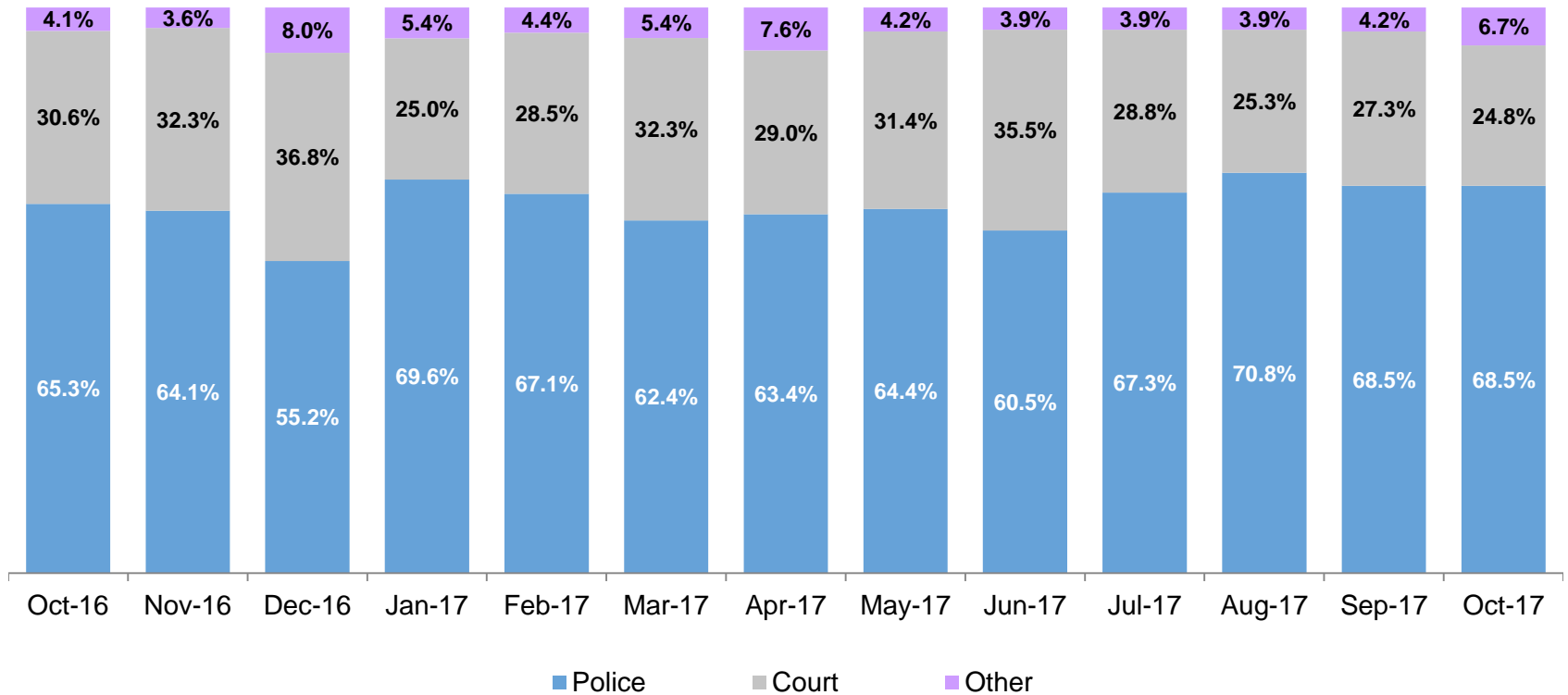
### Total Monthly Admissions to Detention

January 2014 – October 2017 (Monthly Total)



### Admit Authority, Detention Admissions

October 2016 – October 2017 (Monthly Total)

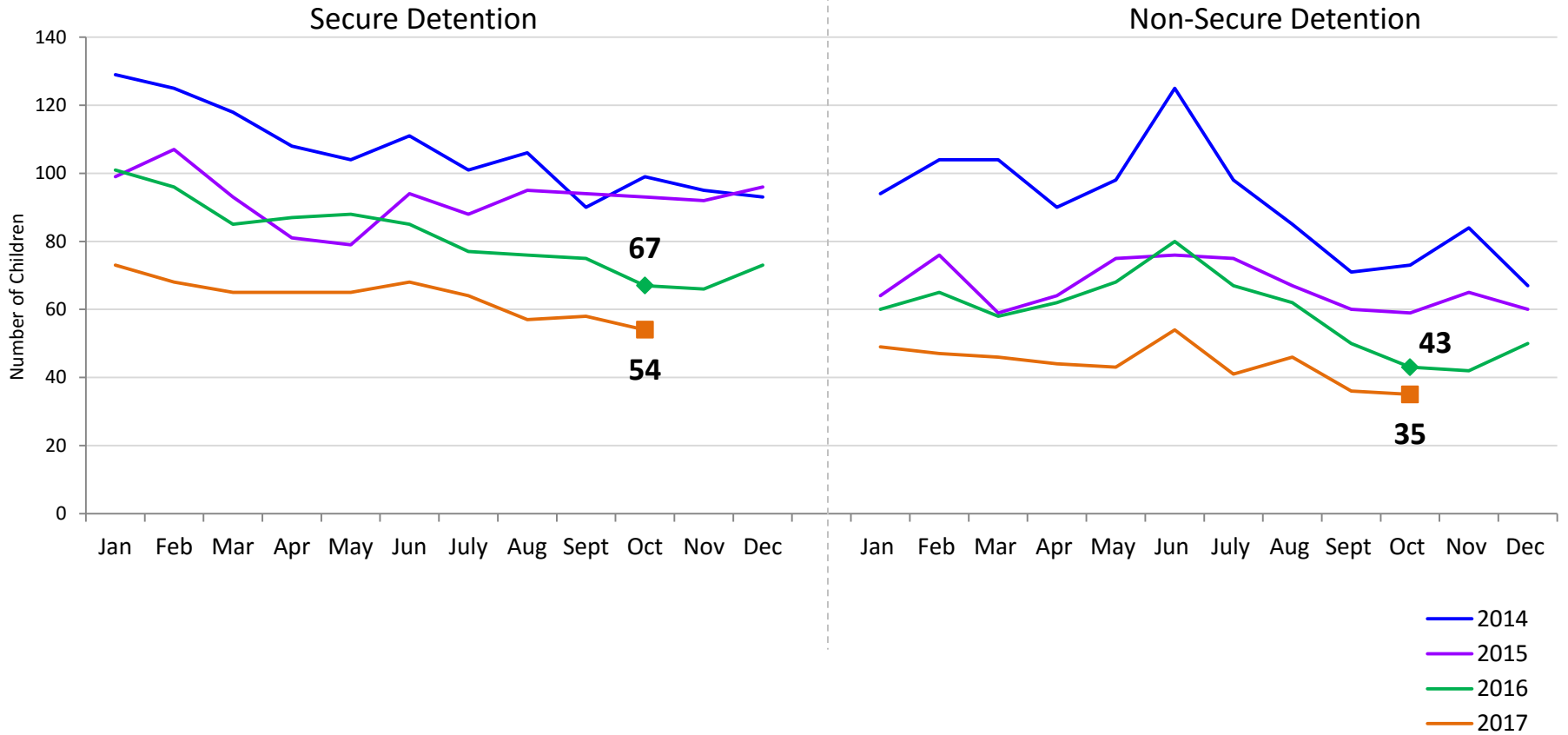


	Oct-16	Nov-16	Dec-16	Jan-17	Feb-17	Mar-17	Apr-17	May-17	Jun-17	Jul-17	Aug-17	Sep-17	Oct-17
Number of Admissions	196	192	163	204	158	186	145	191	152	153	154	143	165

Note: Other Admit Authority includes the Sheriff Department, Department of Corrections and ACS.

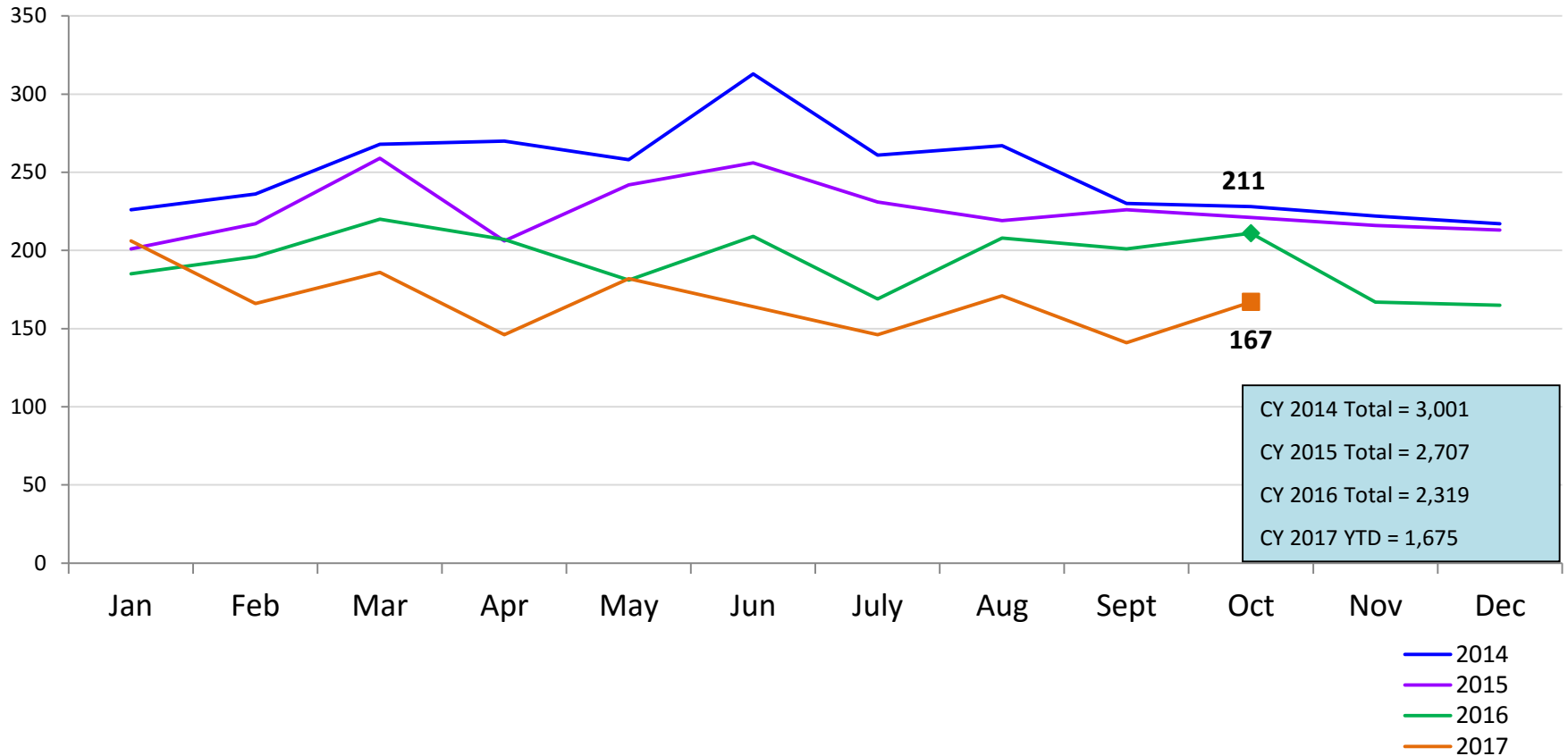
### Monthly Average Daily Population

January 2014 – October 2017



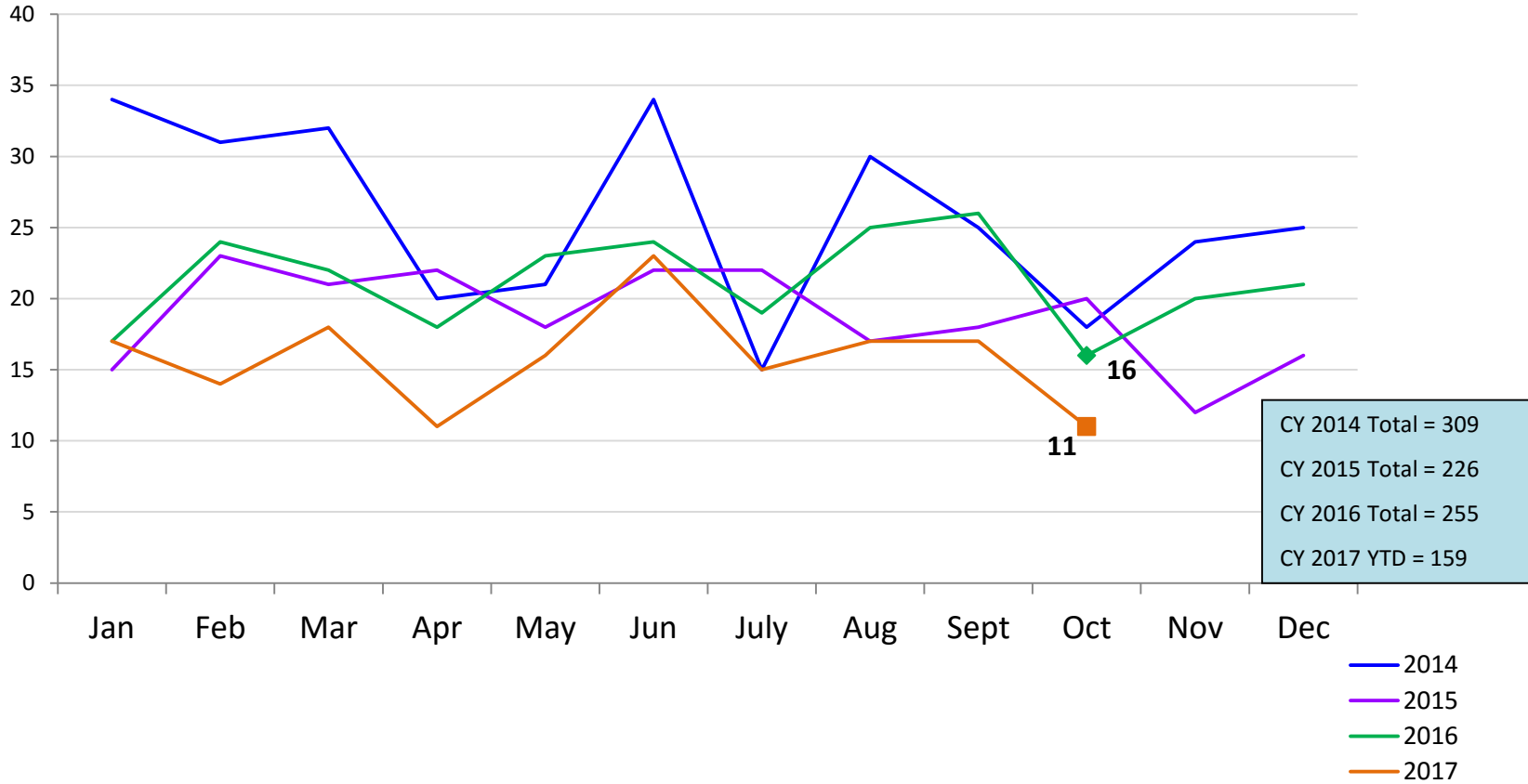
### Total Monthly Releases from Detention

January 2014 – October 2017 (Monthly Total)



### Close to Home Admissions\*

January 2014 – October 2017 (Monthly Total)

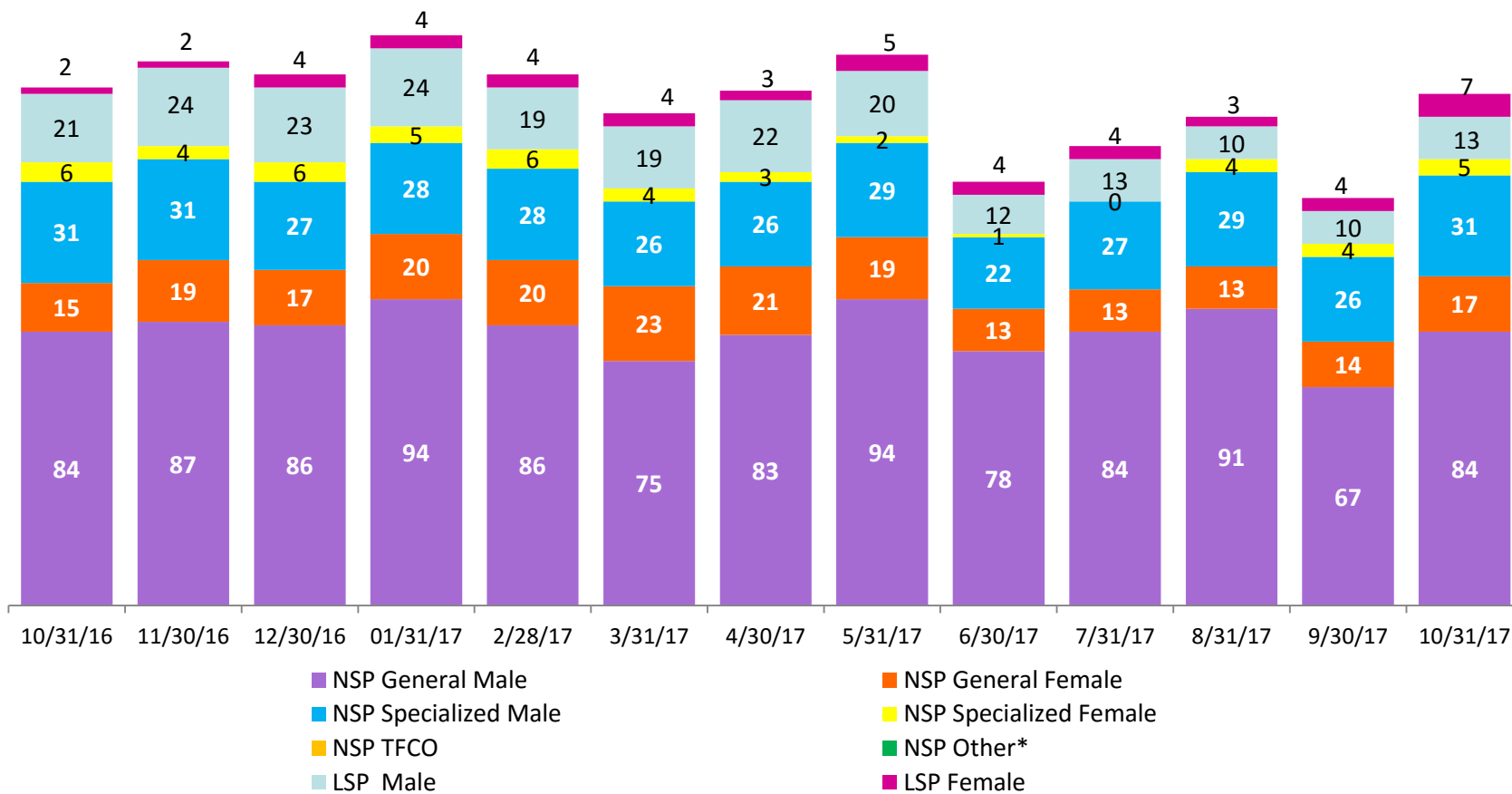


\*Beginning in December 2015 Close to Home admissions include LSP as well as NSP.



# CTH Placement, in 24-hour Care

October 2016 – October 2017 (end of month)

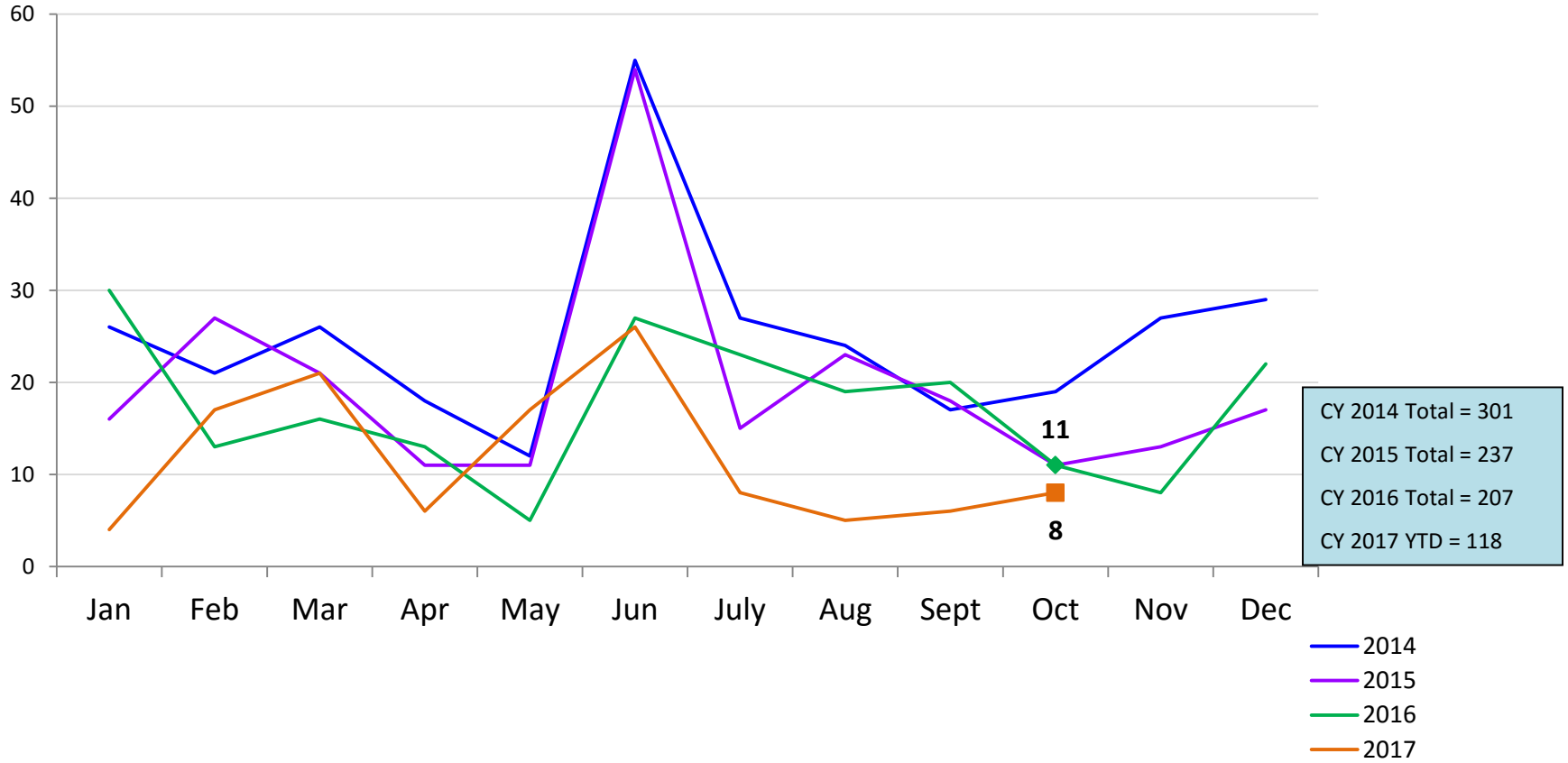


Number in Placement													
	10/31/16	11/30/16	12/30/16	1/31/17	2/28/17	3/31/17	4/30/17	5/31/17	6/30/17	7/31/17	8/31/17	9/30/17	10/31/17
NSP	136	141	136	147	140	128	133	144	114	124	137	111	137
LSP	23	26	27	28	23	23	25	25	16	17	13	14	20

\*NSP Other includes youth in child welfare and mother/child placements.

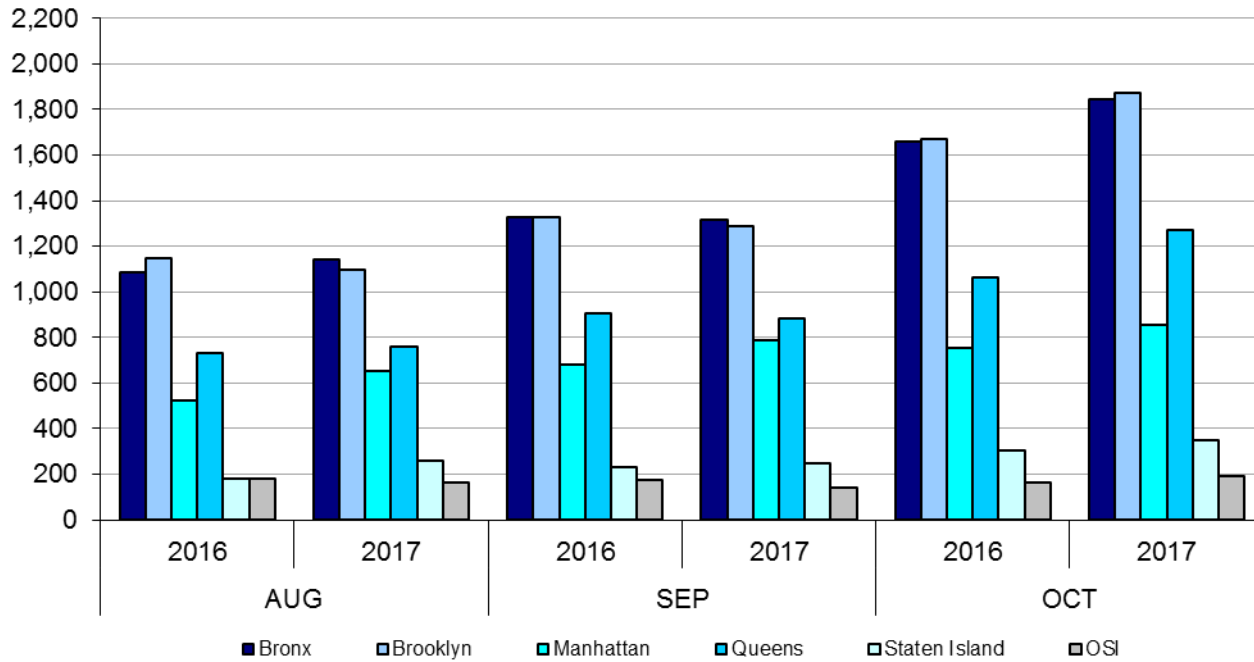
### Releases from Close to Home Placement to Aftercare

January 2014 – October 2017 (Monthly Total)



# Appendix

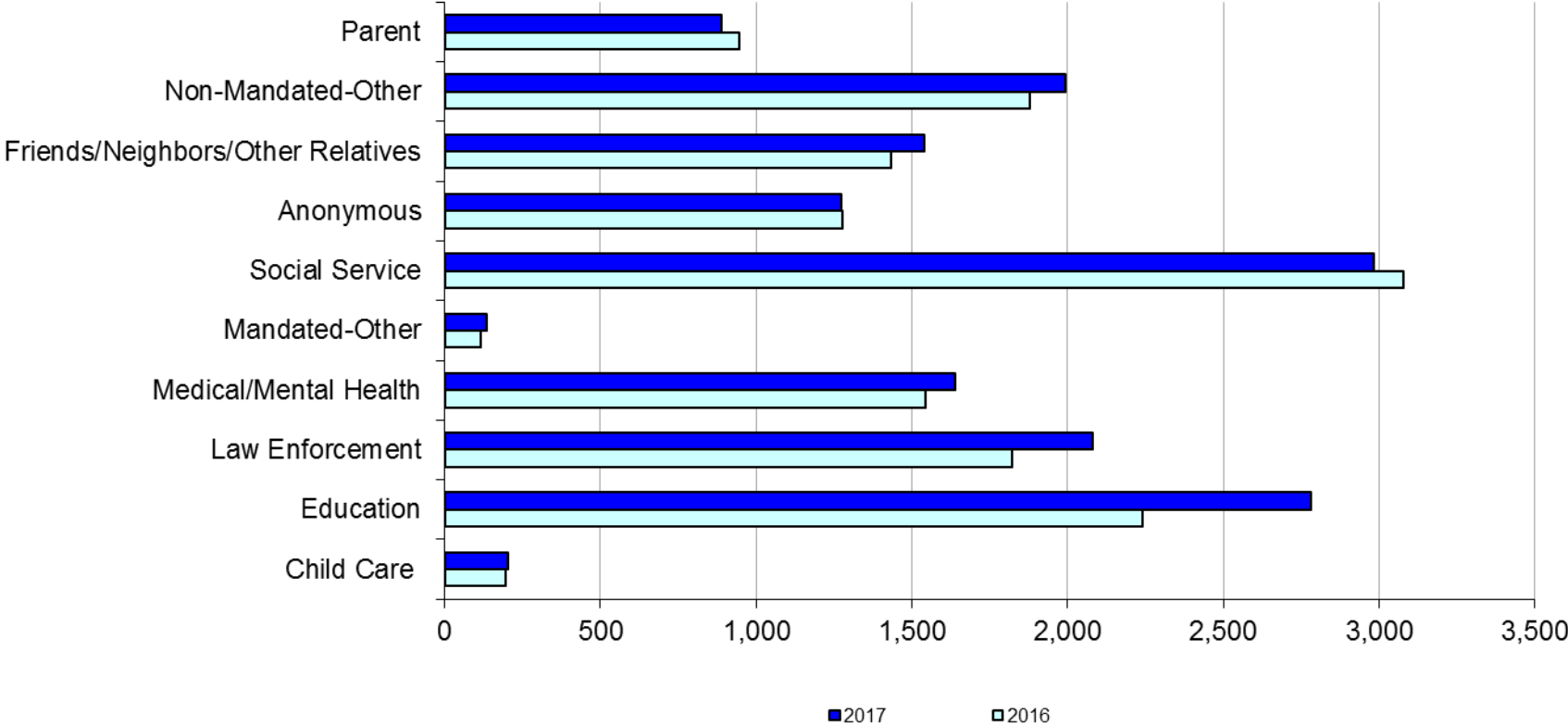
Figure 1: SCR Intakes by Borough, AUG 16 - OCT 16 and AUG 17 - OCT 17



**Table 1 - SCR Intake Changes by Borough, AUG 16 - OCT 16 and AUG 17 - OCT 17**

Month	Year	Bronx	Brooklyn	Manhattan	Queens	Staten Island	OSI	Other	Total
AUG	2016	1,083	1,148	525	734	179	179	187	4,035
	2017	1,140	1,097	651	757	261	163	174	4,243
	% Change	5.3%	-4.4%	24.0%	3.1%	45.8%	-8.9%	-7.0%	5.2%
SEP	2016	1,329	1,328	680	908	230	173	207	4,855
	2017	1,316	1,288	787	881	247	138	176	4,833
	% Change	-1.0%	-3.0%	15.7%	-3.0%	7.4%	-20.2%	-15.0%	-0.5%
OCT	2016	1,657	1,668	754	1,065	304	165	205	5,818
	2017	1,844	1,872	857	1,272	348	192	176	6,561
	% Change	11.3%	12.2%	13.7%	19.4%	14.5%	16.4%	-14.1%	12.8%
Total	2016	4,069	4,144	1,959	2,707	713	517	599	14,708
	2017	4,300	4,257	2,295	2,910	856	493	526	15,637
	% Change	5.7%	2.7%	17.2%	7.5%	20.1%	-4.6%	-12.2%	6.3%

**Figure 2: Citywide SCR Intakes by Reporter Group, AUG 16 – OCT 16 and AUG 17 - OCT 17**

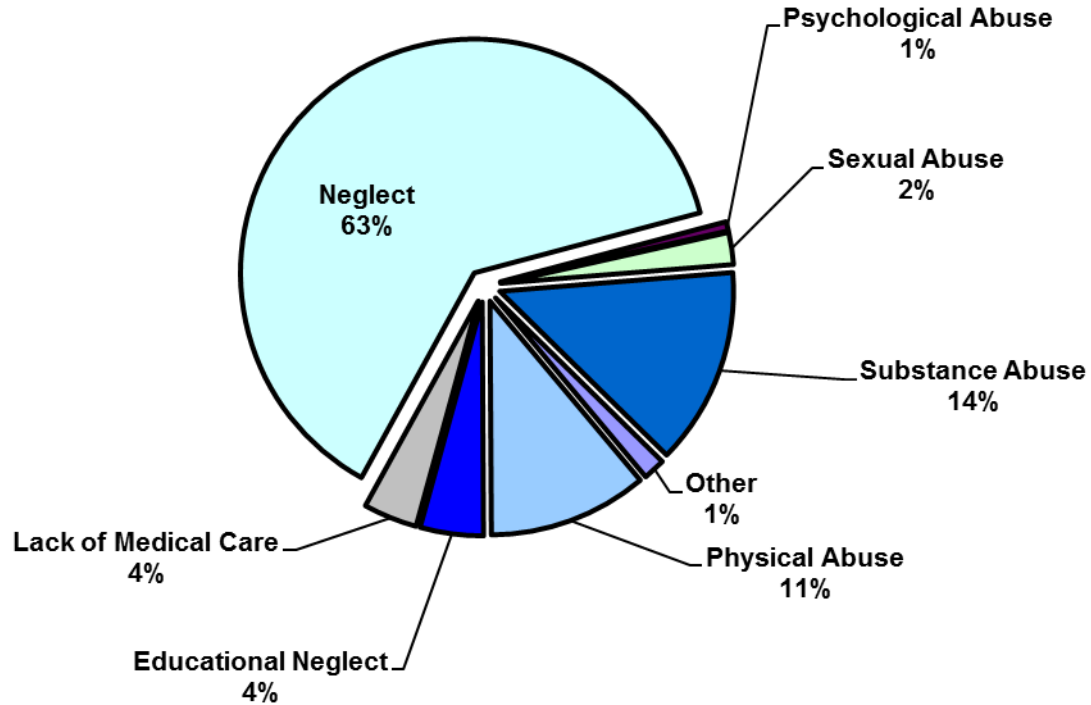


**Table 2 - SCR Intakes by Reporter Group, AUG 16 - OCT 16 and AUG 17 - OCT 17**

Year	Child Care/ Substitute Care Personnel	Educational Personnel	Law Enforcement	Medical/ Mental Health Personnel	Mandated- Other	Social Service Personnel	Anonymous	Friends/ Neighbors/ Other Relatives	Non- Mandated- Other	Parent	Foster Parent	*Total
<b>Bronx</b>												
2016	62	683	471	429	29	878	351	379	557	227	0	4,069
2017	39	808	514	463	29	810	368	482	565	219	1	4,300
% Change	-37.1%	18.3%	9.1%	7.9%	0.0%	-7.7%	4.8%	27.2%	1.4%	-3.5%	--	5.7%
<b>Brooklyn</b>												
2016	45	683	603	407	38	796	365	436	505	262	2	4,144
2017	63	813	667	441	26	770	330	400	514	230	1	4,257
% Change	40.0%	19.0%	10.6%	8.4%	-31.6%	-3.3%	-9.6%	-8.3%	1.8%	-12.2%	-50.0%	2.7%
<b>Manhattan</b>												
2016	23	246	278	228	13	436	172	180	269	112	0	1,959
2017	37	310	331	270	24	466	205	243	306	102	0	2,295
% Change	60.9%	26.0%	19.1%	18.4%	84.6%	6.9%	19.2%	35.0%	13.8%	-8.9%	--	17.2%
<b>Queens</b>												
2016	29	451	272	291	22	601	251	281	333	173	0	2,707
2017	26	613	362	291	34	577	216	250	378	159	1	2,910
% Change	-10.3%	35.9%	33.1%	0.0%	54.5%	-4.0%	-13.9%	-11.0%	13.5%	-8.1%	--	7.5%
<b>Staten Island</b>												
2016	7	122	78	74	4	134	83	91	75	43	2	713
2017	9	173	86	88	5	163	90	107	89	44	1	856
% Change	28.6%	41.8%	10.3%	18.9%	25.0%	21.6%	8.4%	17.6%	18.7%	2.3%	-50.0%	20.1%
<b>OSI</b>												
2016	24	27	32	55	5	111	29	37	97	96	4	517
2017	24	31	32	47	13	81	43	35	107	79	1	493
% Change	0.0%	14.8%	0.0%	-14.5%	160.0%	-27.0%	48.3%	-5.4%	10.3%	-17.7%	-75.0%	-4.6%
<b>Other</b>												
2016	7	29	87	60	4	123	25	31	45	33	0	599
2017	5	32	89	38	3	118	21	24	34	55	1	526
% Change	-28.6%	10.3%	2.3%	-36.7%	-25.0%	-4.1%	-16.0%	-22.6%	-24.4%	66.7%	--	-12.2%
<b>Citywide</b>												
2016	197	2,241	1,821	1,544	115	3,079	1,276	1,435	1,881	946	8	14,708
2017	203	2,780	2,081	1,638	134	2,985	1,273	1,541	1,993	888	6	15,637
% Change	3.0%	24.1%	14.3%	6.1%	16.5%	-3.1%	-0.2%	7.4%	6.0%	-6.1%	-25.0%	6.3%

\*There is a small number of intakes with unknown reporter that is included in the totals.

**Figure 3: SCR Allegations, AUG 17 – OCT 17**



Total Allegations = 40,064

Allegations are grouped as follows: Physical Abuse - burn, fatality, fracture, choking, twisting, shaking, excessive corporal punishment, internal injuries, lacerations, bruises, welts, poisoning, noxious substances; Educational Neglect – educational neglect; Lack of Medical Care – lack of medical care; Neglect - inadequate guardianship, inadequate food, clothing, shelter, lack of supervision, malnutrition, failure to thrive, swelling, dislocations, sprains; Psychological Abuse - isolation, emotional neglect; Sexual Abuse – sexual abuse; Substance Abuse - parental drug use, child drug use; and Other - abandonment, inappropriate custodial conduct.

**Table 3 - SCR Allegations, AUG 16 - OCT 16 and AUG 17 - OCT 17**

Year	Physical Abuse	Educational Neglect	Lack of Medical Care	Neglect	Psychological Abuse	Sexual Abuse	Substance Abuse	Other	Total
<b>Bronx</b>									
2016	1,147	654	436	7,175	71	222	1,556	108	11,369
2017	1,162	639	481	7,392	57	239	1,659	98	11,727
% Change	1.3%	-2.3%	10.3%	3.0%	-19.7%	7.7%	6.6%	-9.3%	3.1%
<b>Brooklyn</b>									
2016	1,210	553	426	6,858	44	242	1,537	129	10,999
2017	1,272	489	407	6,683	72	273	1,379	125	10,700
% Change	5.1%	-11.6%	-4.5%	-2.6%	63.6%	12.8%	-10.3%	-3.1%	-2.7%
<b>Manhattan</b>									
2016	444	202	193	2798	35	79	598	80	4,429
2017	492	209	193	2889	26	100	706	42	4,657
% Change	10.8%	3.5%	0.0%	3.3%	-25.7%	26.6%	18.1%	-47.5%	5.1%
<b>Queens</b>									
2016	838	237	246	4,160	65	141	875	197	6,759
2017	902	258	230	4,697	70	142	979	183	7,461
% Change	7.6%	8.9%	-6.5%	12.9%	7.7%	0.7%	11.9%	-7.1%	10.4%
<b>Staten Island</b>									
2016	188	78	72	1,395	10	42	400	40	2,225
2017	213	96	81	1,553	7	36	395	64	2,445
% Change	13.3%	23.1%	12.5%	11.3%	-30.0%	-14.3%	-1.3%	60.0%	9.9%
<b>OSI</b>									
2016	348	31	68	1,379	8	74	150	10	2,068
2017	285	24	49	1,358	11	71	215	1	2,014
% Change	-18.1%	-22.6%	-27.9%	-1.5%	37.5%	-4.1%	43.3%	-90.0%	-2.6%
<b>Other</b>									
2016	105	27	48	585	10	20	145	83	1,023
2017	89	38	54	604	14	27	130	104	1,060
% Change	-15.2%	40.7%	12.5%	3.2%	40.0%	35.0%	-10.3%	25.3%	3.6%
<b>Citywide</b>									
2016	4,280	1,782	1,489	24,350	243	820	5,261	647	38,872
2017	4,415	1,753	1,495	25,176	257	888	5,463	617	40,064
% Change	3.2%	-1.6%	0.4%	3.4%	5.8%	8.3%	3.8%	-4.6%	3.1%



**TABLE 4 - Child Welfare Preventive Cases  
New and Closed  
January 2014 to October 2017**

Month	New Cases	Closed Cases
<b>2014</b>		
Jan-14	841	686
Feb-14	885	726
Mar-14	998	930
Apr-14	919	941
May-14	919	982
Jun-14	890	826
Jul-14	973	1,168
Aug-14	826	1,102
Sep-14	841	771
Oct-14	835	917
Nov-14	677	788
Dec-14	1,062	821
<b>2015</b>		
Jan-15	728	792
Feb-15	902	751
Mar-15	1,122	831
Apr-15	977	932
May-15	914	999
Jun-15	1,068	930
Jul-15	899	1,217
Aug-15	893	1,064
Sep-15	764	964
Oct-15	749	889
Nov-15	746	807
Dec-15	1,013	881
<b>2016</b>		
Jan-16	792	770
Feb-16	897	795
Mar-16	1,029	978
Apr-16	836	892
May-16	890	966
Jun-16	996	935
Jul-16	842	1,069
Aug-16	897	1,006
Sep-16	821	850
Oct-16	776	627
Nov-16	728	490
Dec-16	816	462
<b>2017</b>		
Jan-17	548	449
Feb-17	602	920
Mar-17	864	1,032
Apr-17	645	780
May-17	790	925
Jun-17	908	944
Jul-17	765	852
Aug-17	875	864
Sep-17	841	750
Oct-17	849	766

**Table 5 - Referrals to Child Welfare Services by Source  
January 2014 to October 2017**

Month	Total Referrals	Division of Child Protection	Foster Care Agencies	PPRS Transfer	School	Self	Other Sources*
<b>2014</b>							
Jan-14	1,537	70.0%	1.2%	6.6%	2.3%	5.8%	14.2%
Feb-14	1,334	69.7%	0.8%	8.4%	1.7%	5.5%	13.9%
Mar-14	1,612	70.0%	1.4%	8.6%	1.6%	5.3%	13.1%
Apr-14	1,525	70.2%	0.9%	7.6%	2.1%	3.7%	15.4%
May-14	1,580	74.4%	0.7%	8.3%	1.4%	5.2%	10.0%
Jun-14	1,550	78.6%	1.2%	6.3%	1.2%	3.2%	9.4%
Jul-14	1,659	79.6%	1.5%	6.7%	0.4%	4.2%	7.6%
Aug-14	1,395	72.2%	1.6%	10.8%	0.3%	4.9%	10.3%
Sep-14	1,597	49.4%	1.5%	7.6%	0.3%	4.5%	36.8%
Oct-14	1,634	68.2%	1.9%	10.0%	1.2%	4.6%	14.1%
Nov-14	1,311	66.4%	0.9%	14.3%	2.4%	3.9%	12.1%
Dec-14	1,785	71.1%	1.4%	8.8%	2.9%	4.8%	11.0%
CY 2014	18,519	70.1%	1.3%	8.6%	1.5%	4.6%	14.0%
<b>2015</b>							
Jan-15	1,430	74.4%	1.6%	8.7%	1.8%	3.8%	9.7%
Feb-15	1,538	76.5%	0.8%	8.1%	1.8%	4.7%	8.2%
Mar-15	1,798	74.6%	0.9%	7.3%	1.6%	4.8%	10.8%
Apr-15	1,719	78.2%	1.3%	7.2%	0.6%	3.5%	9.1%
May-15	1,561	77.2%	1.0%	5.1%	1.5%	4.5%	10.8%
Jun-15	1,716	77.4%	1.1%	7.7%	1.2%	3.5%	9.1%
Jul-15	1,511	79.6%	0.9%	7.2%	0.3%	3.8%	8.2%
Aug-15	1,418	79.3%	2.2%	7.8%	0.2%	3.1%	7.5%
Sep-15	1,209	72.1%	2.8%	10.4%	0.5%	5.5%	8.6%
Oct-15	1,338	70.4%	1.9%	8.3%	2.1%	5.8%	11.6%
Nov-15	1,220	68.2%	1.8%	9.6%	1.4%	6.2%	12.8%
Dec-15	1,526	73.5%	1.6%	8.0%	2.0%	5.0%	9.9%
<b>2016</b>							
Jan-16	1,370	73.6%	1.6%	8.2%	0.7%	5.4%	10.6%
Feb-16	1,436	75.8%	2.2%	7.8%	1.0%	3.8%	9.3%
Mar-16	1,557	72.0%	2.1%	8.8%	1.0%	4.6%	11.4%
Apr-16	1,378	76.1%	1.5%	7.4%	1.5%	3.5%	10.0%
May-16	1,386	73.4%	1.4%	8.7%	1.0%	4.7%	10.8%
Jun-16	1,564	77.2%	2.4%	6.2%	1.5%	4.1%	8.6%
Jul-16	1,338	80.3%	1.7%	6.4%	1.0%	4.2%	6.4%
Aug-16	1,385	79.1%	1.8%	7.1%	0.4%	4.0%	7.6%
Sep-16	1,297	77.8%	2.1%	7.5%	0.8%	4.5%	7.4%
Oct-16	1,247	70.1%	2.0%	7.6%	1.5%	5.9%	12.9%
Nov-16	1,229	67.8%	2.0%	7.8%	1.2%	5.5%	15.8%
Dec-16	1,175	76.0%	1.5%	7.1%	1.3%	3.8%	10.3%
<b>2017</b>							
Jan-17	1,046	78.5%	1.4%	6.7%	0.7%	3.1%	9.7%
Feb-17	1,067	77.7%	0.8%	6.7%	0.8%	3.8%	10.1%
Mar-17	1,383	79.1%	0.6%	6.9%	0.9%	4.0%	8.5%
Apr-17	1,116	81.2%	1.0%	5.9%	1.1%	1.4%	9.4%
May-17	1,335	81.9%	0.9%	5.5%	1.3%	2.8%	7.6%
Jun-17	1,449	82.3%	0.8%	5.9%	1.2%	2.9%	6.9%
Jul-17	1,273	83.3%	0.9%	7.9%	0.7%	1.9%	5.3%
Aug-17	1,429	82.7%	0.6%	9.3%	0.3%	1.7%	5.2%
Sep-17	1,387	79.5%	1.6%	7.8%	0.8%	2.8%	7.5%
Oct-17	1,492	78.6%	1.3%	7.7%	0.7%	2.8%	8.8%

\*Other Community Sources includes the Department of Homeless Services, Family Court, FAP, Hospitals and Medical facilities, the NYC Housing Authority, Probation, and Sponsor Agencies.