

FLASH

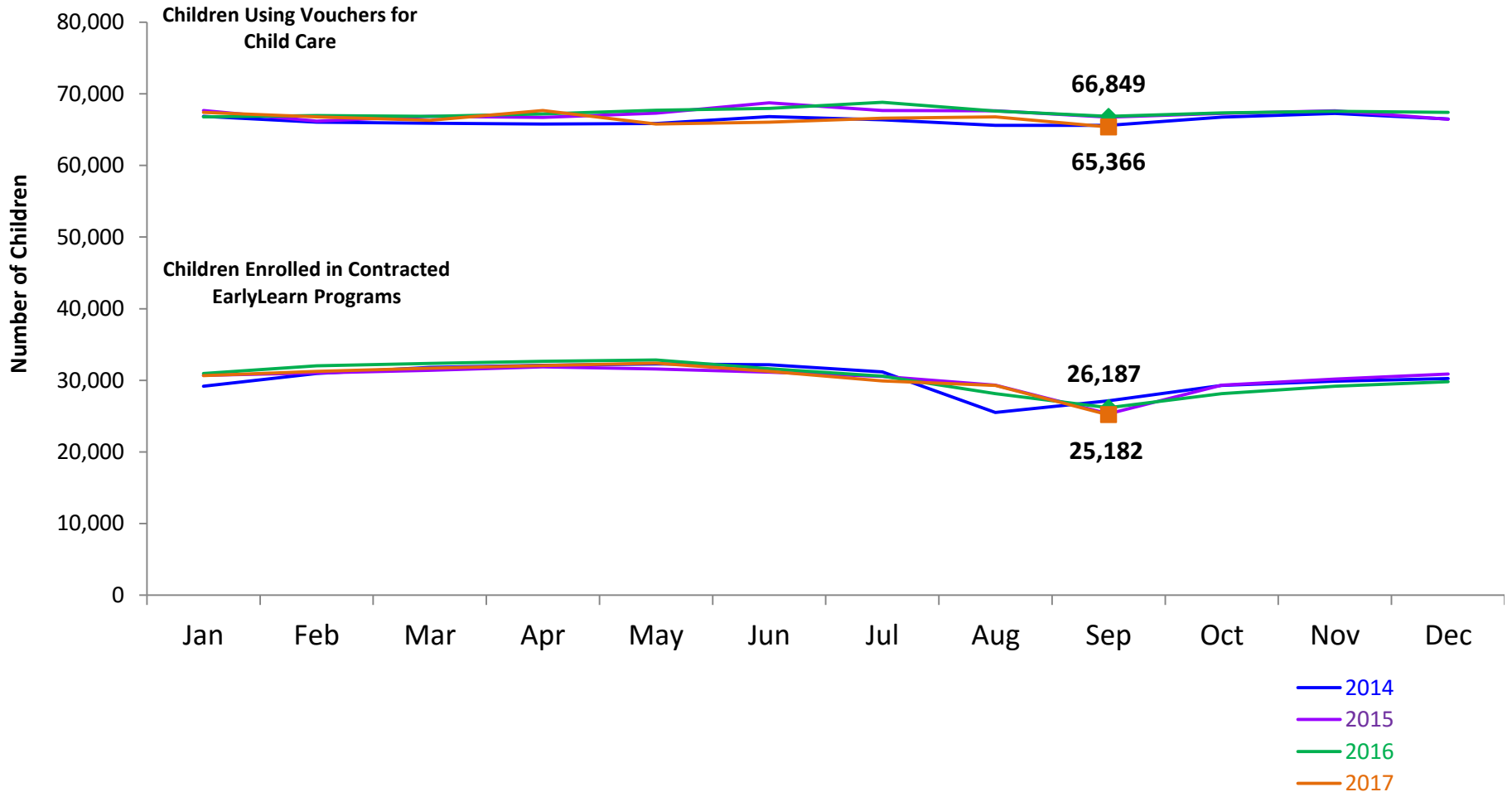
monthly indicator

REPORT

October 2017

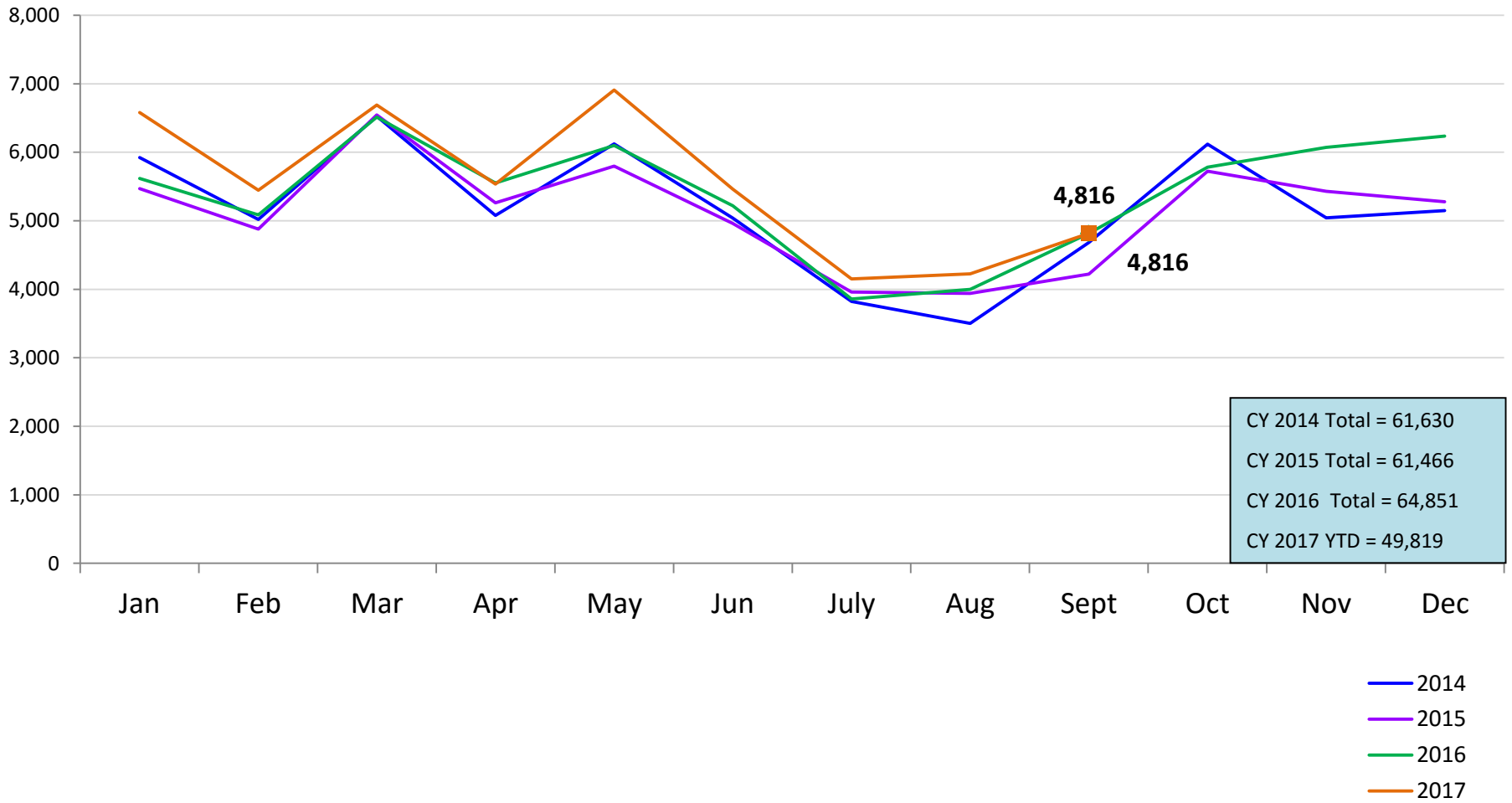
Children Enrolled in Contracted EarlyLearn Programs and Children Using Vouchers for Child Care

January 2014 – September 2017(End of Month)



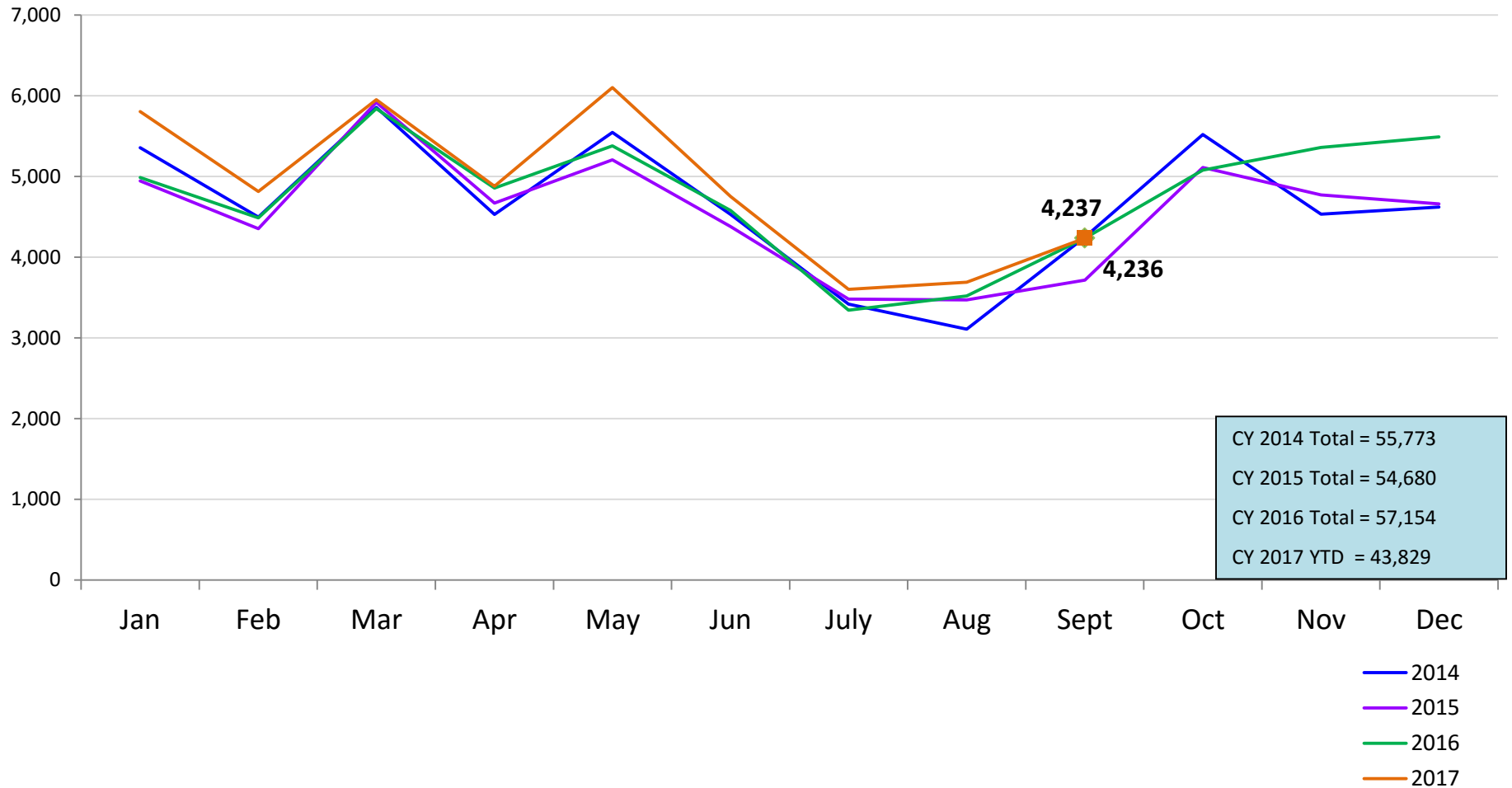
SCR Intakes

January 2014 – September 2017 (Monthly Total)



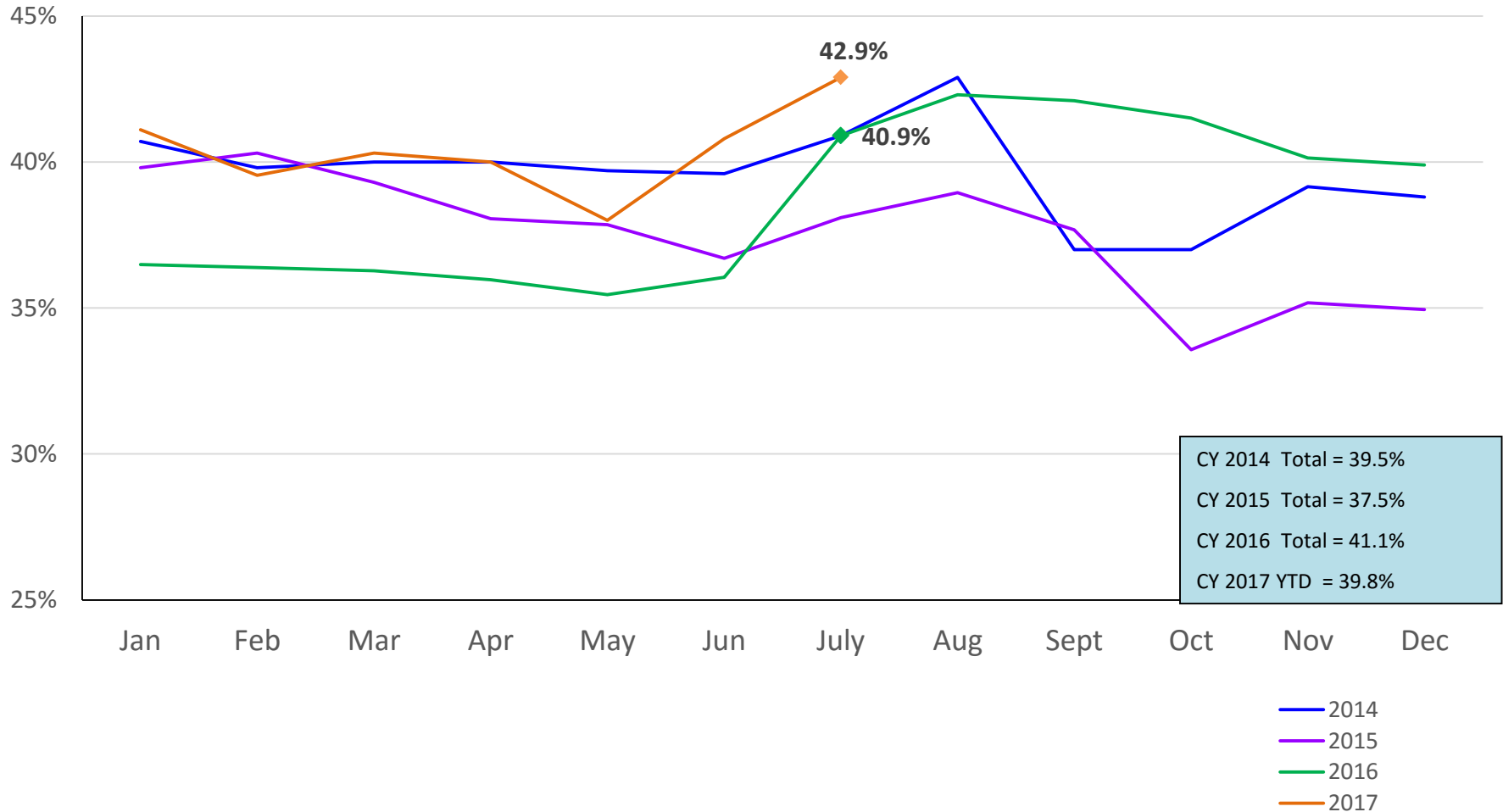
SCR Consolidated Investigations

January 2014 – September 2017 (Monthly Total)



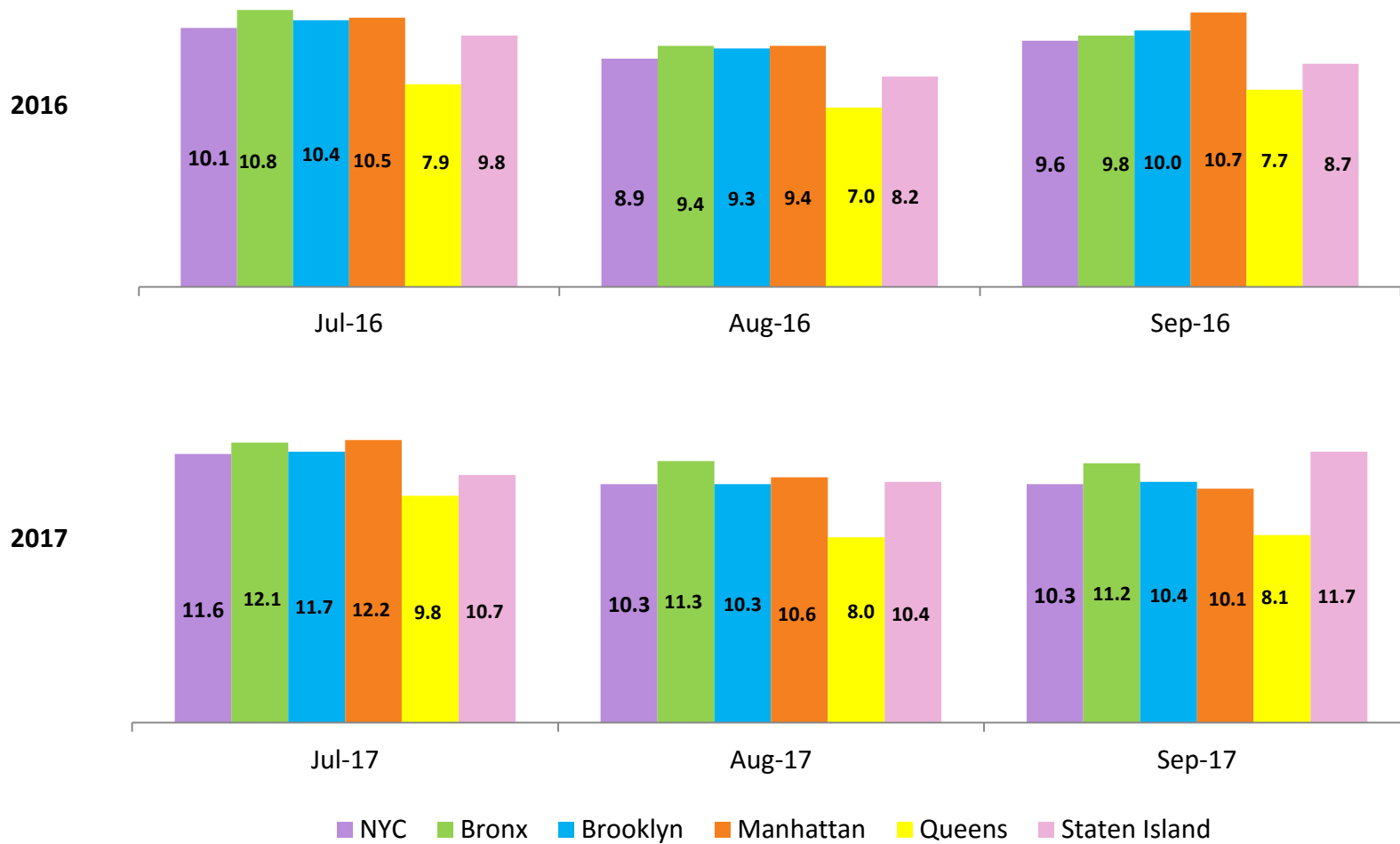
SCR Investigation Indication Rate

January 2014 – July 2017



Average P/D Combined Caseload*

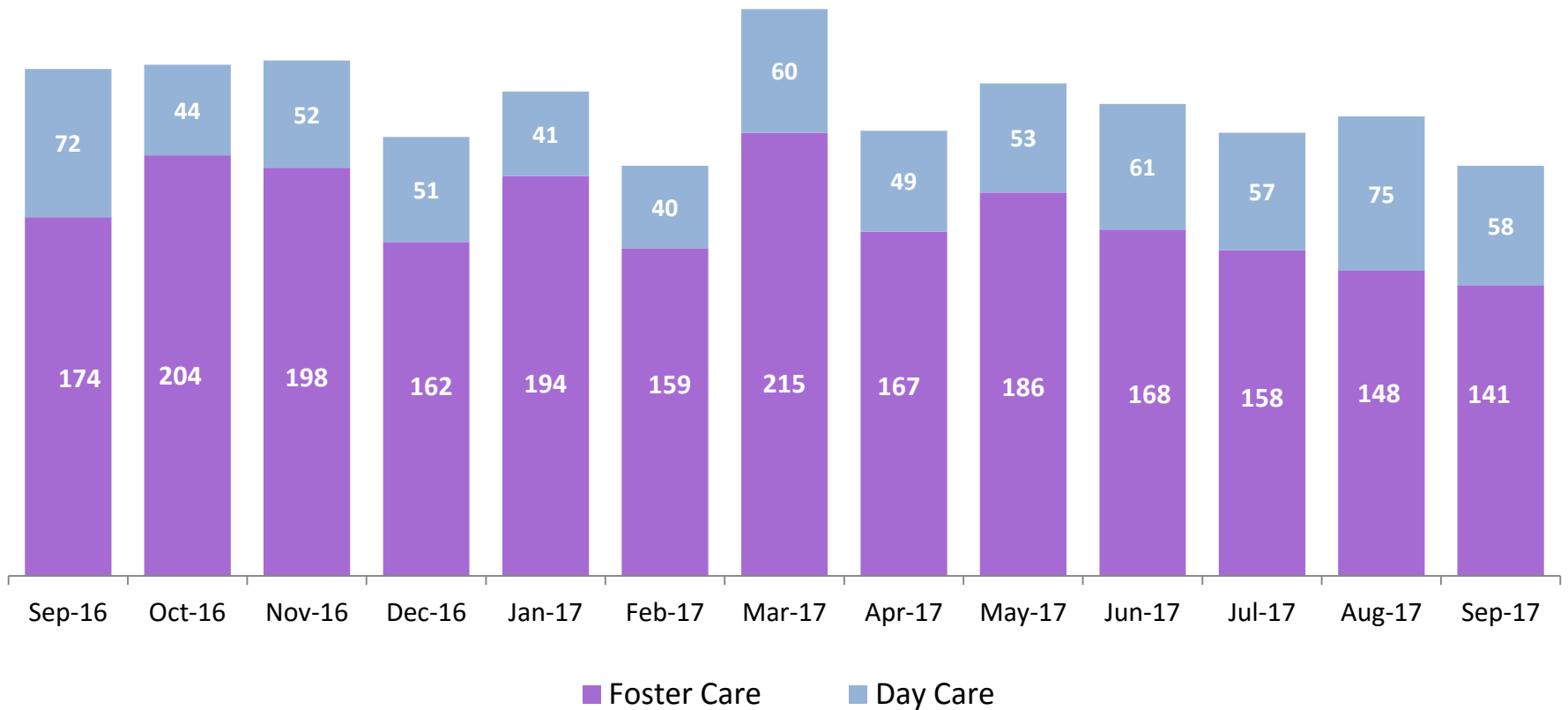
July – September 2016 & July – September 2017



* Caseloads are of protective/diagnostic caseworkers only and exclude the caseloads carried by Level I and Level II Supervisors.

OSI Investigations

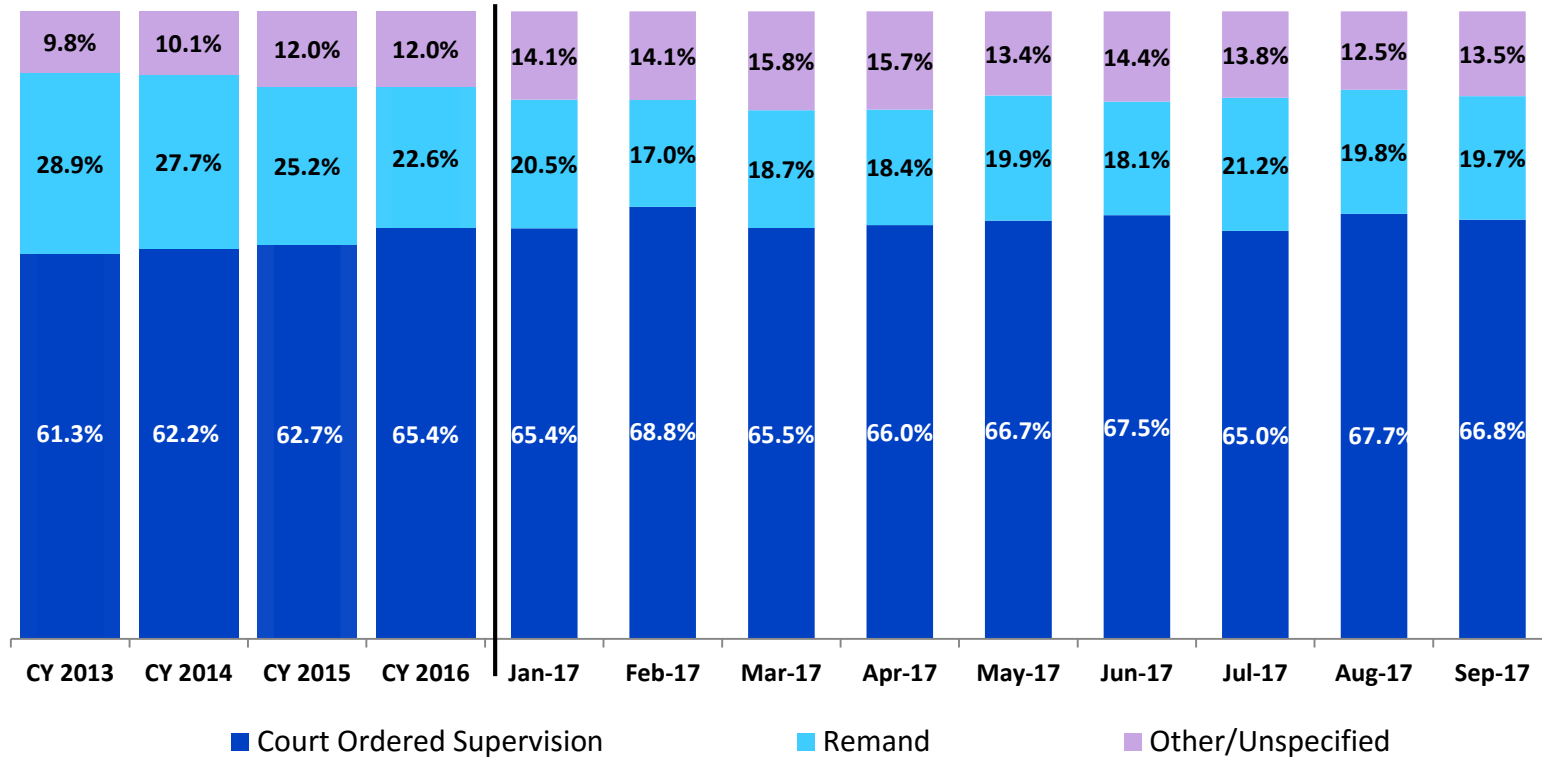
September 2016 – September 2017



	Sep 2016	Oct 2016	Nov 2016	Dec 2016	Jan 2017	Feb 2017	Mar 2017	Apr 2017	May 2017	Jun 2017	Jul 2017	Aug 2017	Sep 2017
Number of Investigations	246	248	250	213	235	199	275	216	239	229	215	223	199

Article 10 Filings and Initial Hearing Outcomes, Children

CY 2013 – September 2017

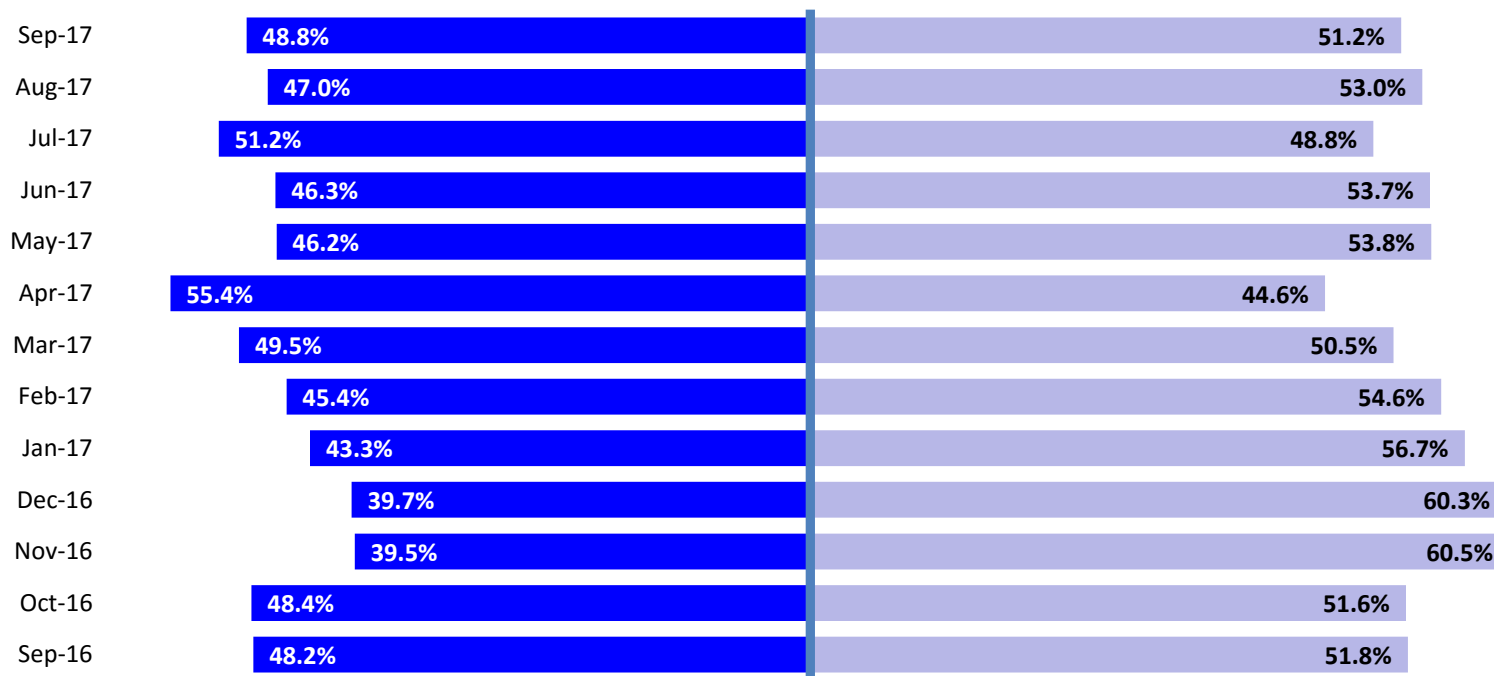


	CY 2013	CY 2014	CY 2015	CY 2016	Jan 2017	Feb 2017	Mar 2017	April 2017	May 2017	Jun 2017	Jul 2017	Aug 2017	Sep 2017
Children with Article 10 Filings	9,318	9,900	10,243	11,453	1,354	1,139	1,553	1,307	1,533	1,500	1,336	1,429	1,297

Note: The category “Other/Unspecified” includes released with no supervision, no order issued and no outcome specified.

Remands Approved at Initial Article 10 Hearing by Removal Status

September 2016 – September 2017

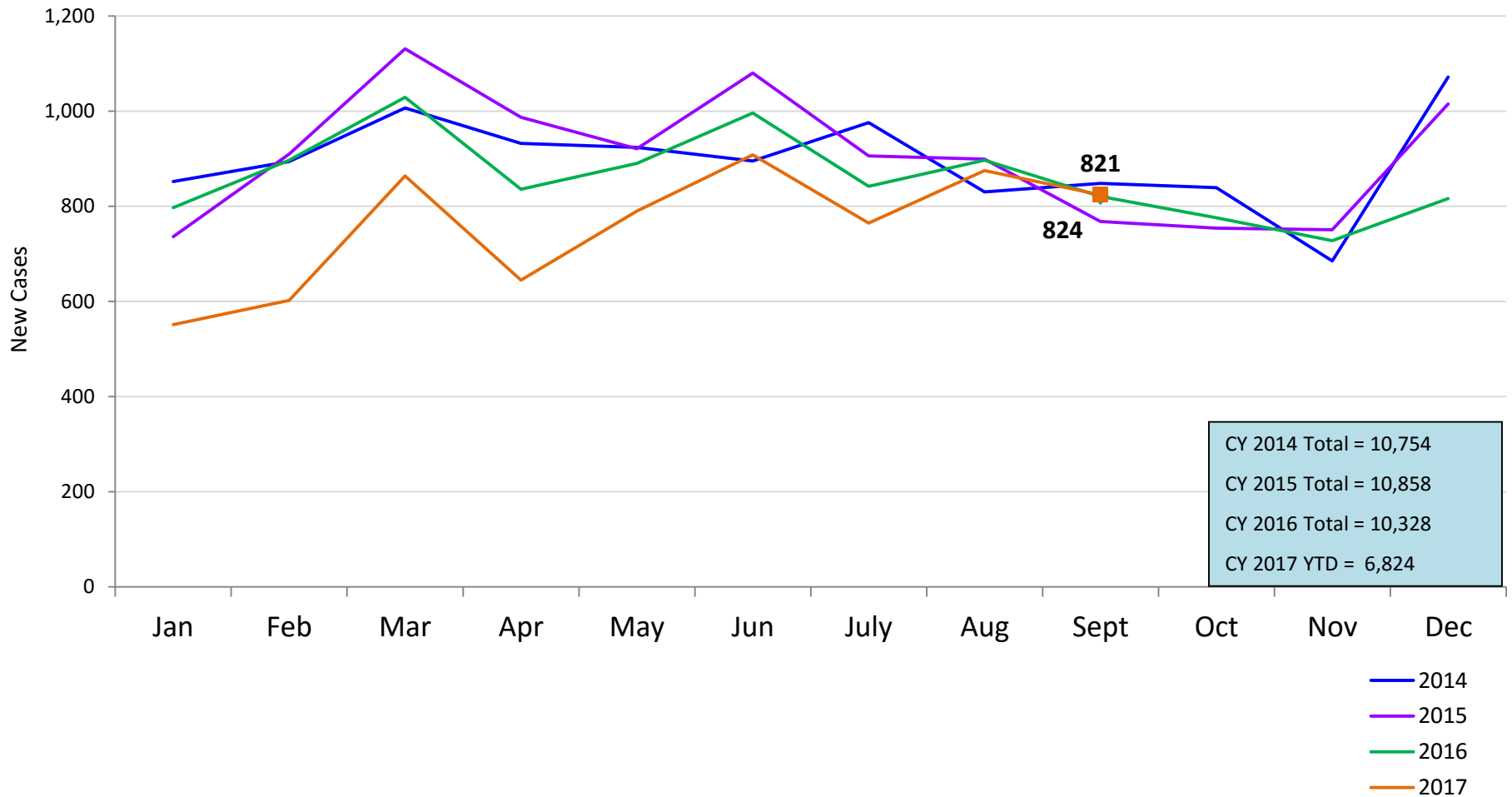


■ Pre-Filing Emergency Removals (court approved at initial hearing) ■ Post-Filing Removals (court ordered at initial hearing)

	Sep 2016	Oct 2016	Nov 2016	Dec 2016	Jan 2017	Feb 2017	Mar 2017	Apr 2017	May 2017	Jun 2017	Jul 2017	Aug 2017	Sep 2017
Children Remanded	199	312	223	287	277	194	291	240	305	272	283	283	256

New Child Welfare Preventive Cases*

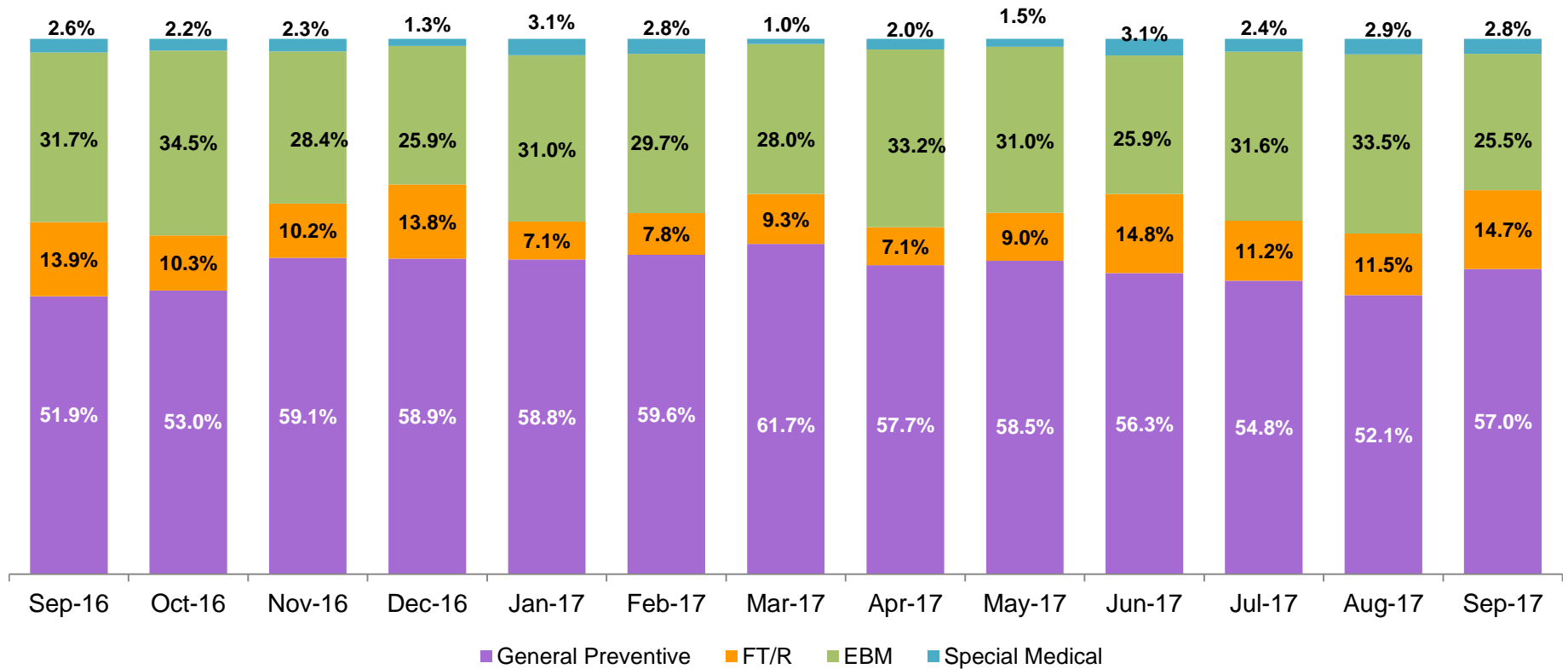
January 2014 – September 2017



* New preventive cases do not include cases transferred from one preventive program to another. See Pages 33 and 34 of the Appendix for supporting data.

New Child Welfare Preventive Cases by Program Type *

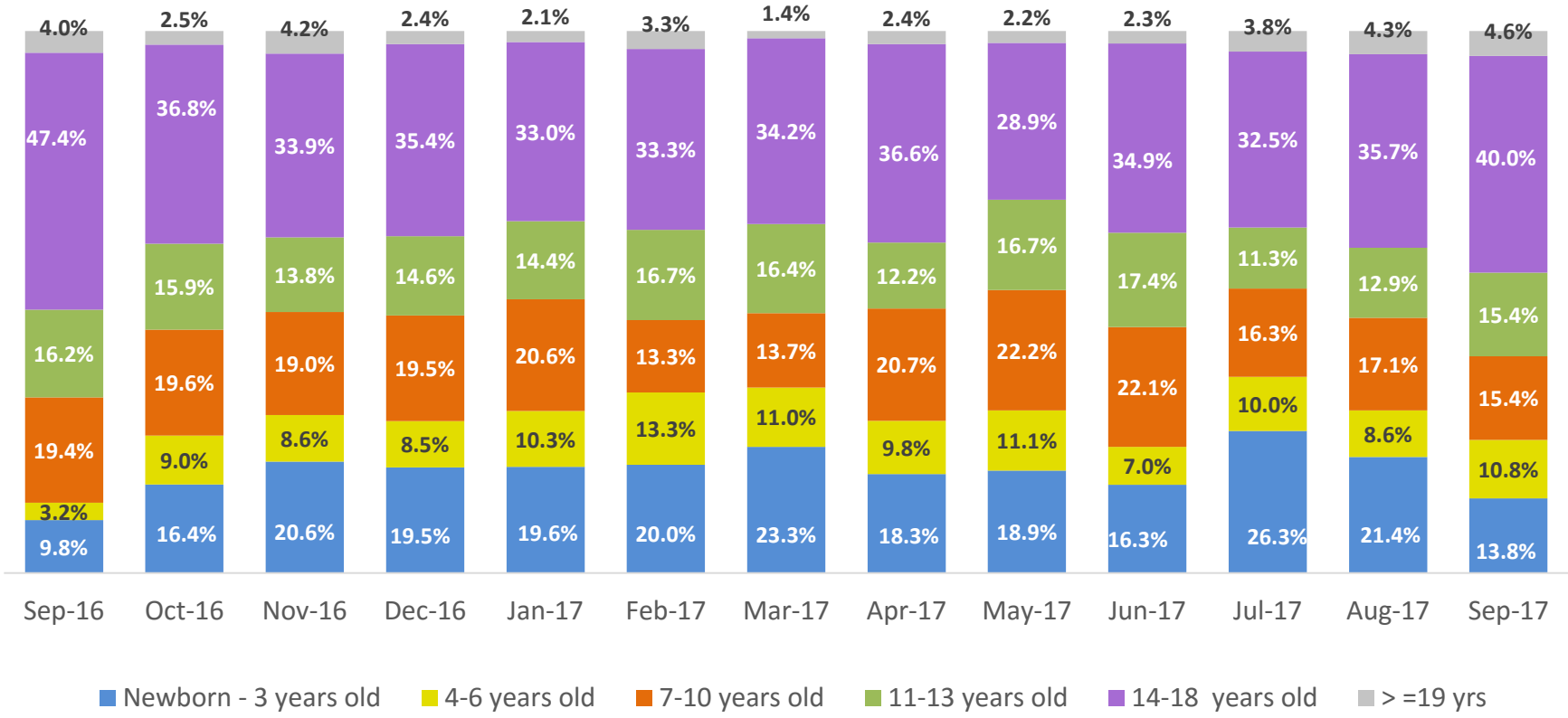
September 2016 – September 2017



	Sep 2016	Oct 2016	Nov 2016	Dec 2016	Jan 2017	Feb 2017	Mar 2017	Apr 2017	May 2017	Jun 2017	Jul 2017	Aug 2017	Sep 2017
Number of New Preventive Cases	821	776	728	816	551	602	864	645	790	908	765	875	824

* New preventive cases exclude cases transferred from one preventive program to another.

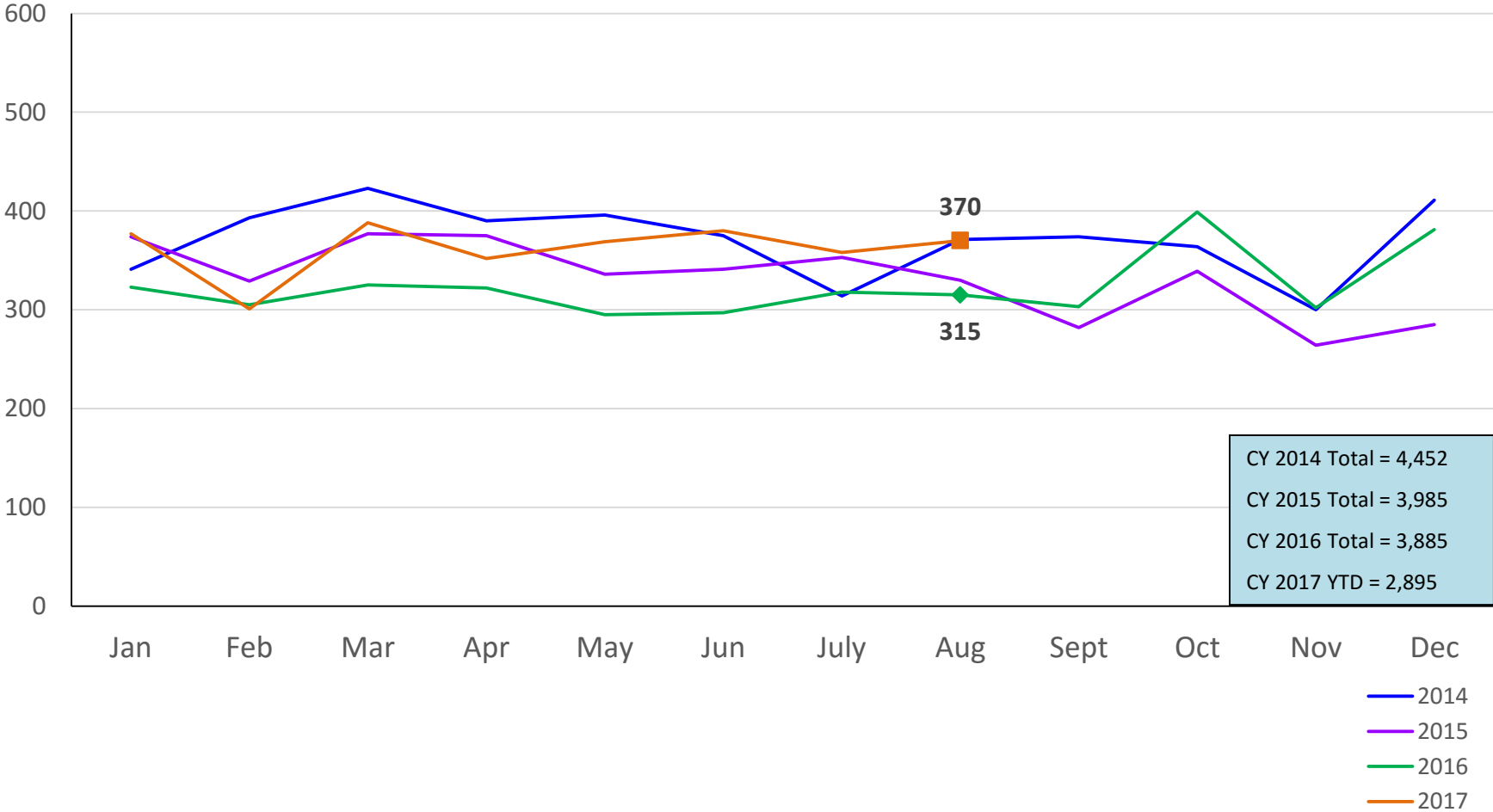
Average Daily Children’s Center Population September 2016 – September 2017



	Sep 2016	Oct 2016	Nov 2016	Dec 2016	Jan 2017	Feb 2017	Mar 2017	Apr 2017	May 2017	Jun 2017	Jul 2017	Aug 2017	Sep 2017
Average Number of Children	54	71	62	82	97	60	73	82	90	86	80	70	65

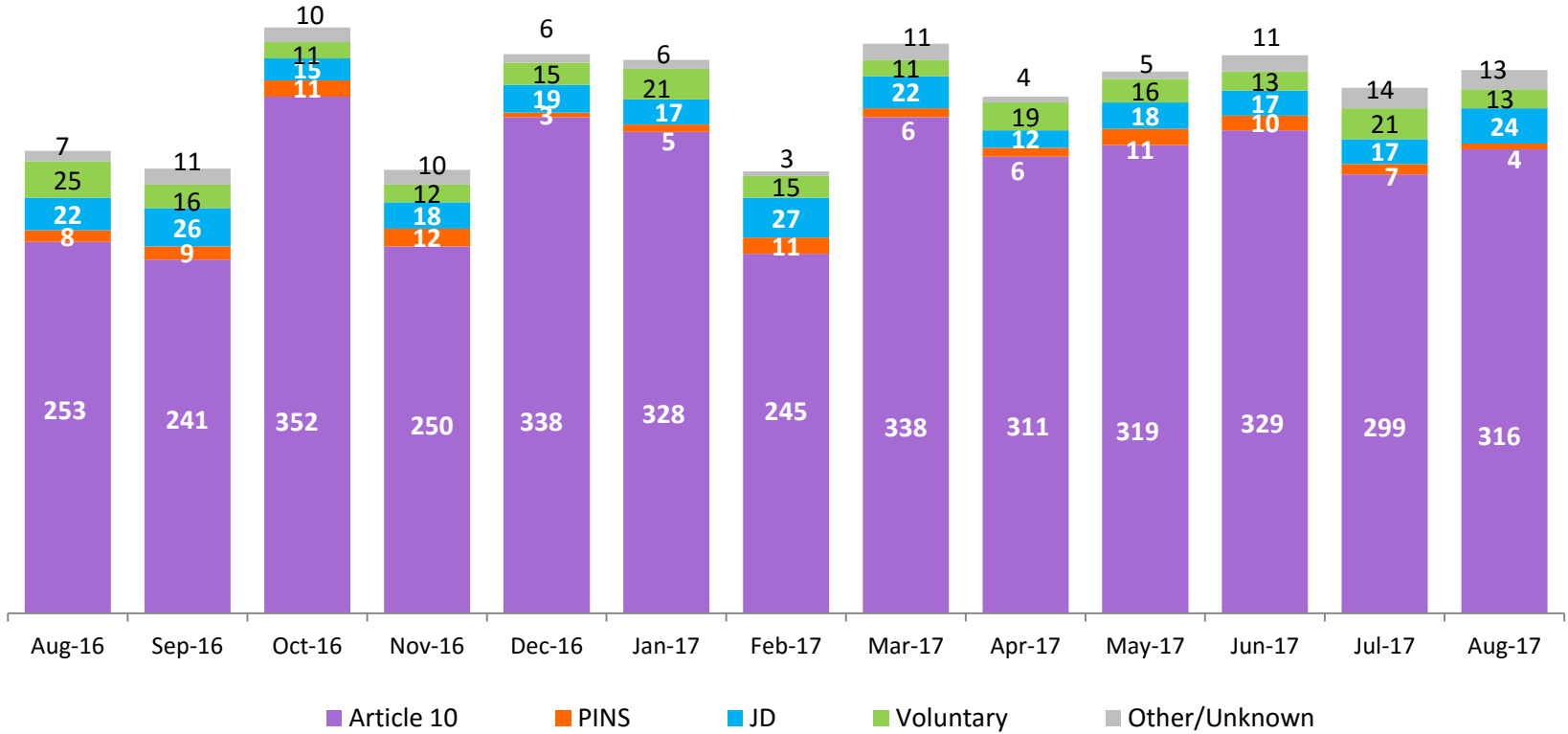
New Monthly Placements of Children into Foster Care

January 2014 – August 2017



Reason for New Placements of Children into Foster Care

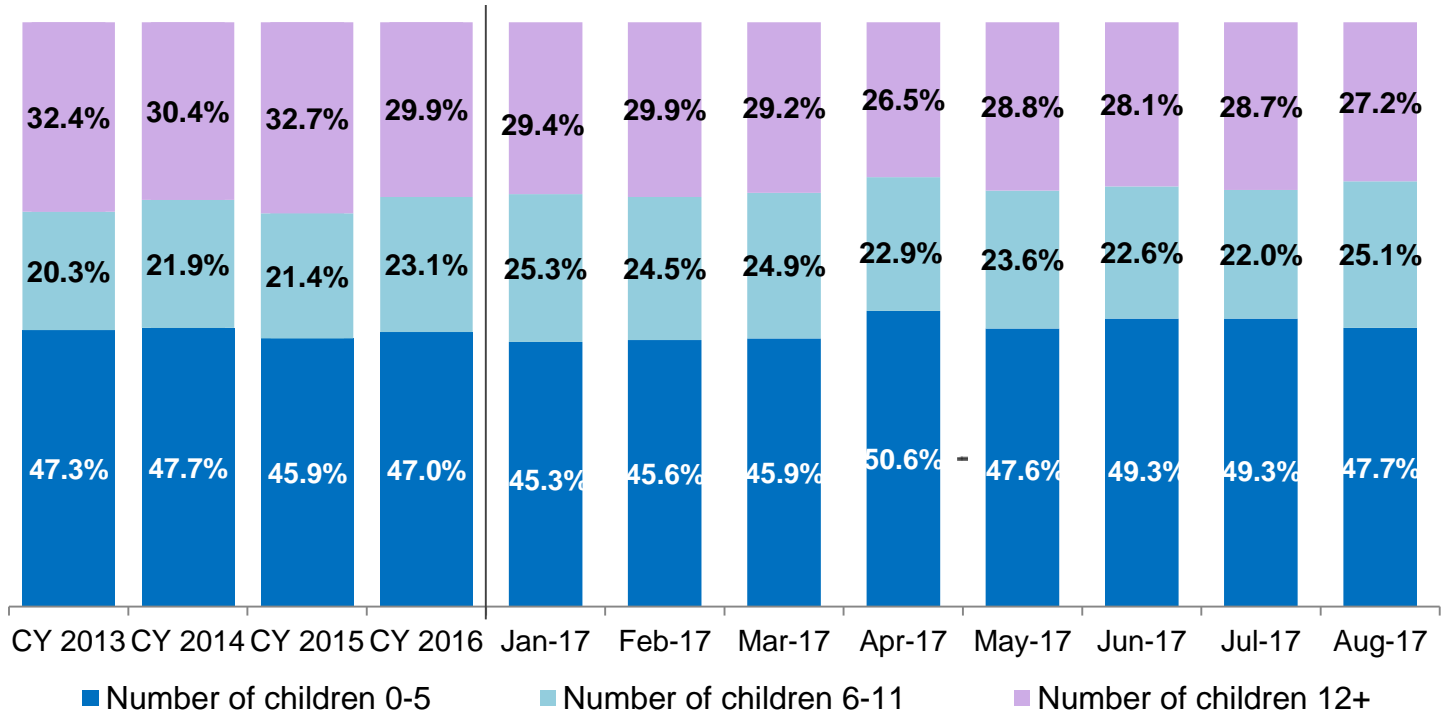
August 2016 – August 2017



	Aug 2016	Sep 2016	Oct 2016	Nov 2016	Dec 2016	Jan 2017	Feb 2017	Mar 2017	Apr 2017	May 2017	Jun 2017	Jul 2017	Aug 2017
Number of Placements	315	303	399	302	381	377	301	388	352	369	380	358	370

New Placements of Children into Foster Care* by Age

CY 2013 - August 2017

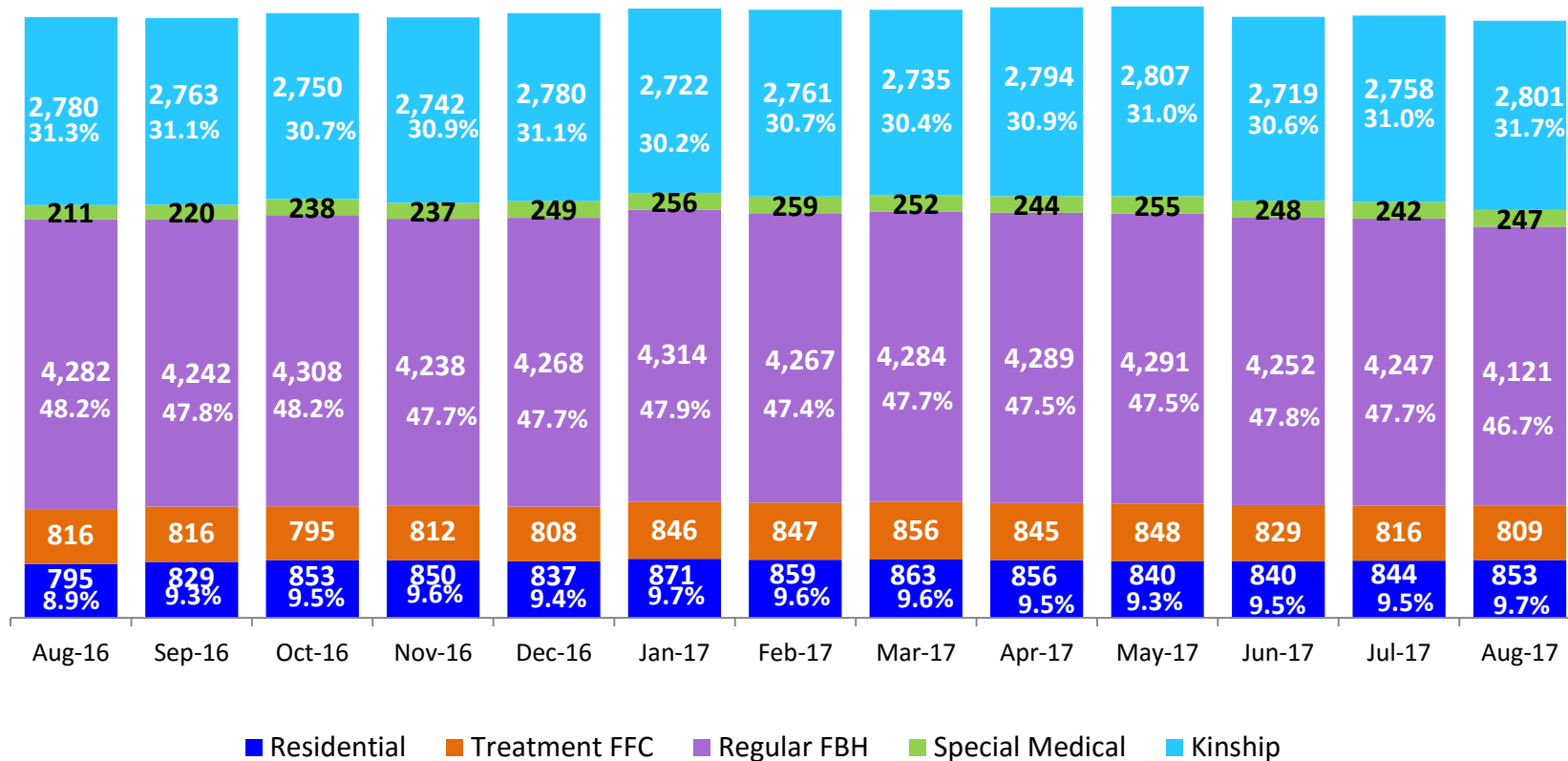


	CY 2013	CY 2014	CY 2015	CY 2016	Jan 2017	Feb 2017	Mar 2017	Apr 2017	May 2017	Jun 2017	Jul 2017	Aug 2017
Number of Placements	4,283	4,160	3,760	3,647	360	274	366	340	351	363	341	346

*Excludes CTH placements.

Children in Foster Care *

August 2016 – August 2017 (end of month)

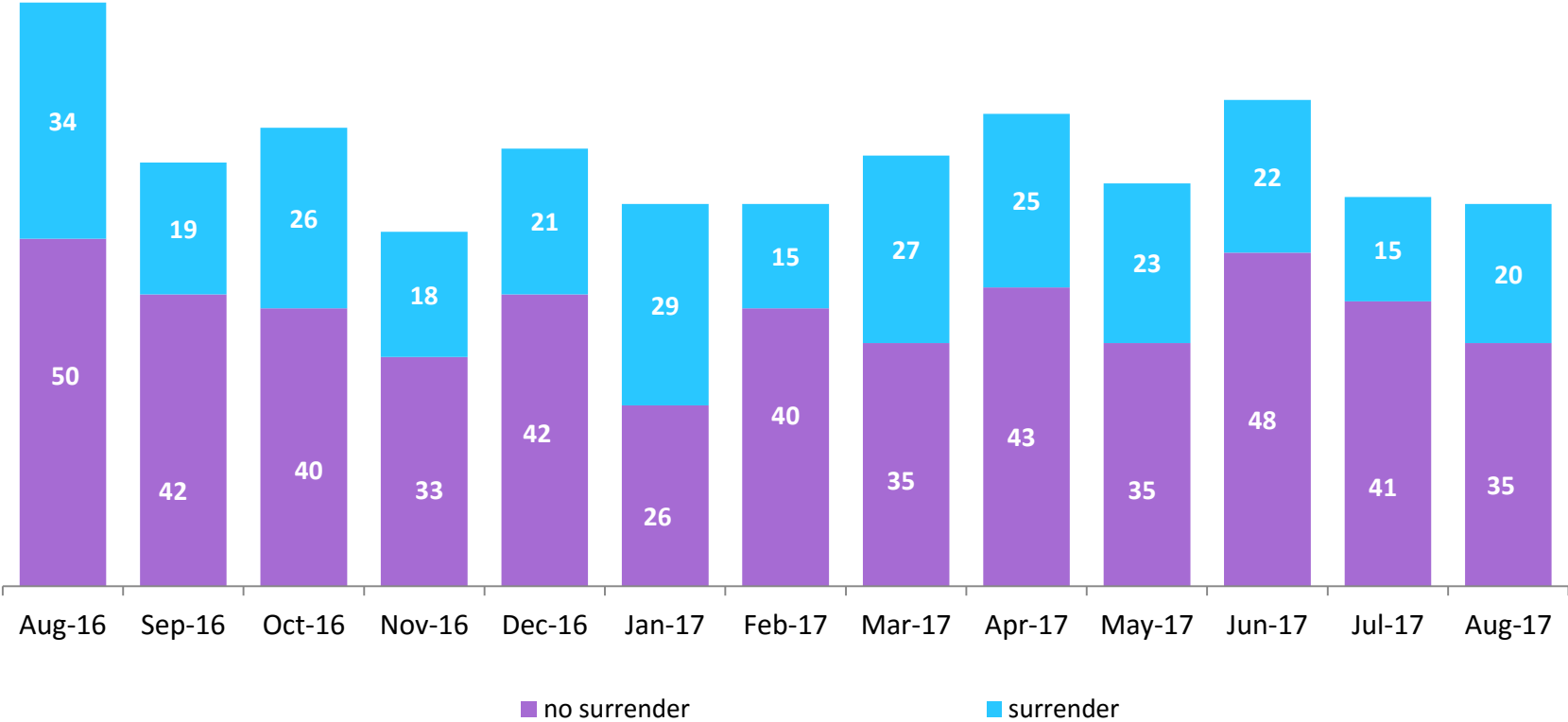


	Aug 2016	Sep 2016	Oct 2016	Nov 2016	Dec 2016	Jan 2017	Feb 2017	Mar 2017	Apr 2017	May 2017	Jun 2017	Jul 2017	Aug 2017
Number in Foster Care	8,884	8,870	8,944	8,879	8,942	9,009	8,993	8,990	9,028	9,041	8,888	8,907	8,831

*Excludes CTH placements and includes children in 24 hour care and approximately 200 young children who are living in foster homes or residential care facilities with their mothers who are in foster care (8D children).

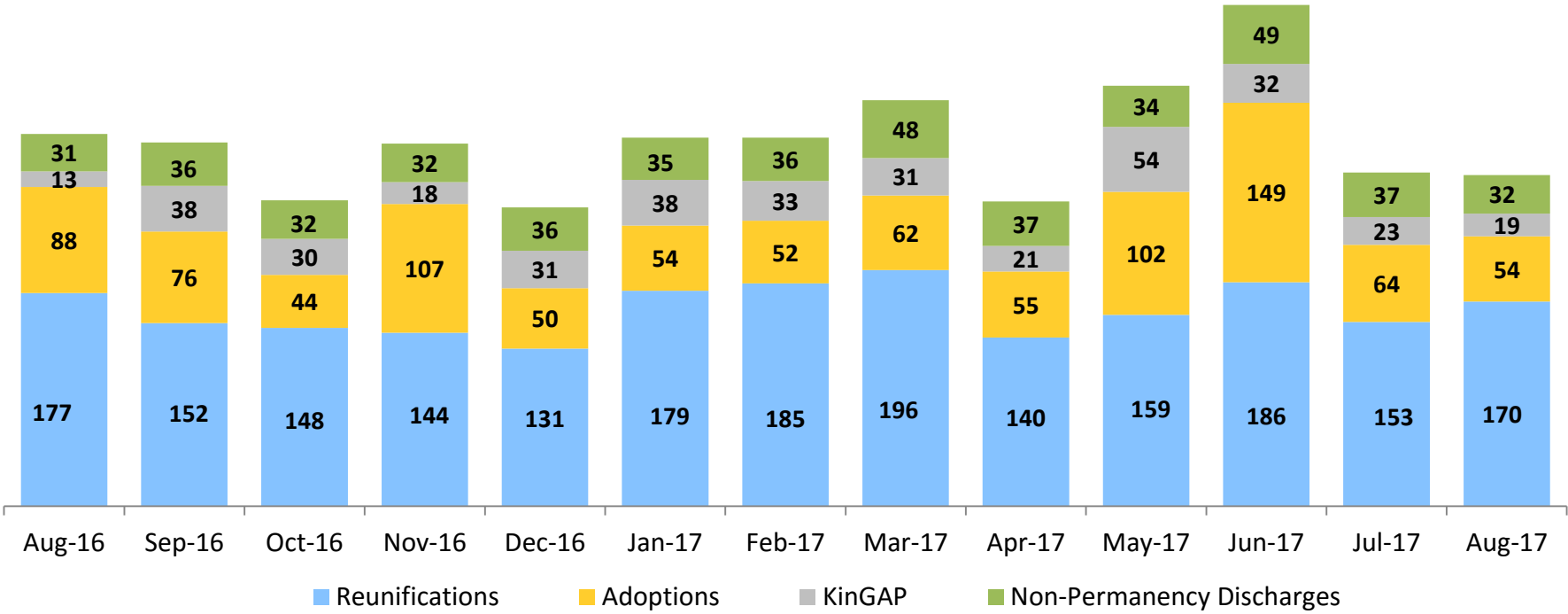
Children Freed for Adoption, Surrender by at Least One Parent

August 2016 – August 2017



	Aug 2016	Sep 2016	Oct 2016	Nov 2016	Dec 2016	Jan 2017	Feb 2017	Mar 2017	Apr 2017	May 2017	Jun 2017	Jul 2017	Aug 2017
Number Freed for Adoption	81	61	66	51	63	55	55	62	68	58	70	56	55

Permanency and Non-Permanency* Discharges from Foster Care**
 August 2016 – August 2017

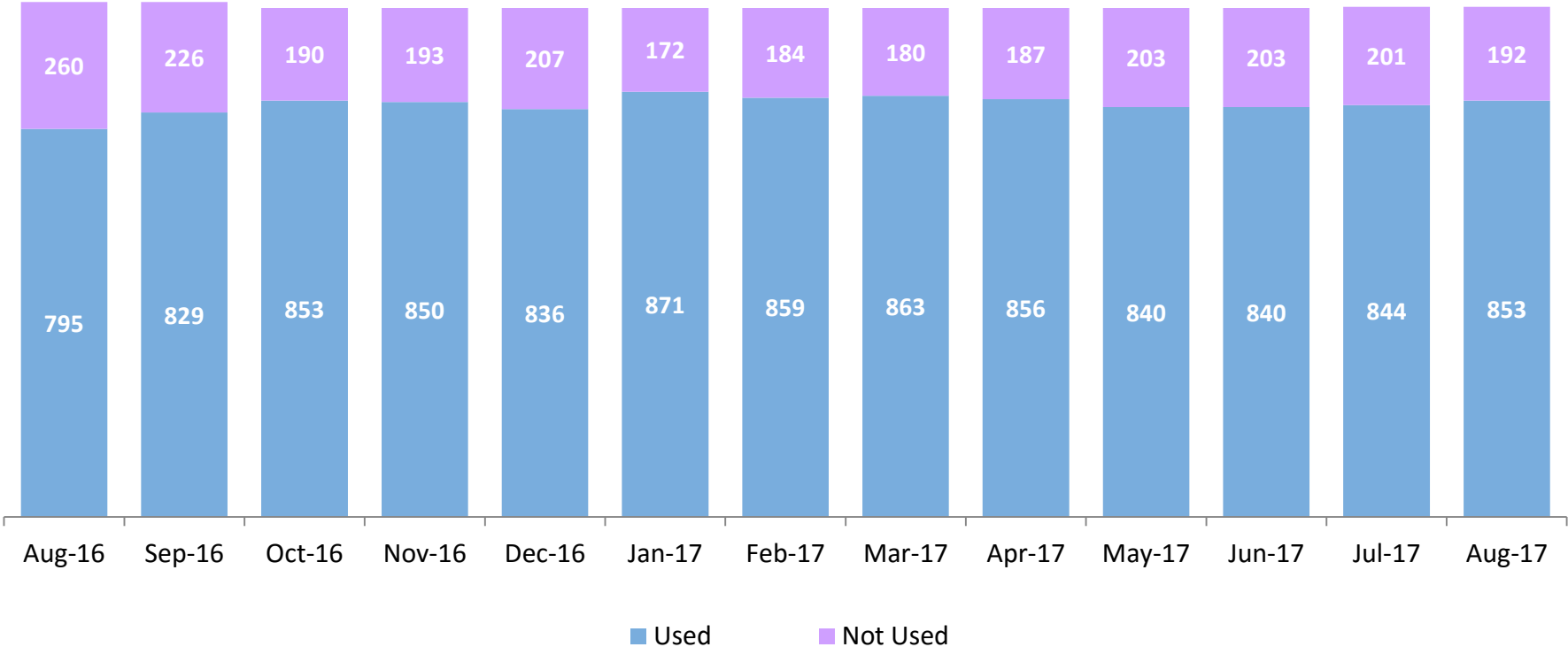


	Aug 2016	Sep 2016	Oct 2016	Nov 2016	Dec 2016	Jan 2017	Feb 2017	Mar 2017	Apr 2017	May 2017	Jun 2017	Jul 2017	Aug 2017
Number of Discharges	309	302	254	301	248	306	306	337	253	349	416	277	275

*Non-permanency discharges include AWOL, APPLA , other discharge destinations such as psychiatric institutions and correctional facilities and discharges with unspecified destinations.

**Excludes discharges of youth who entered care in CTH.

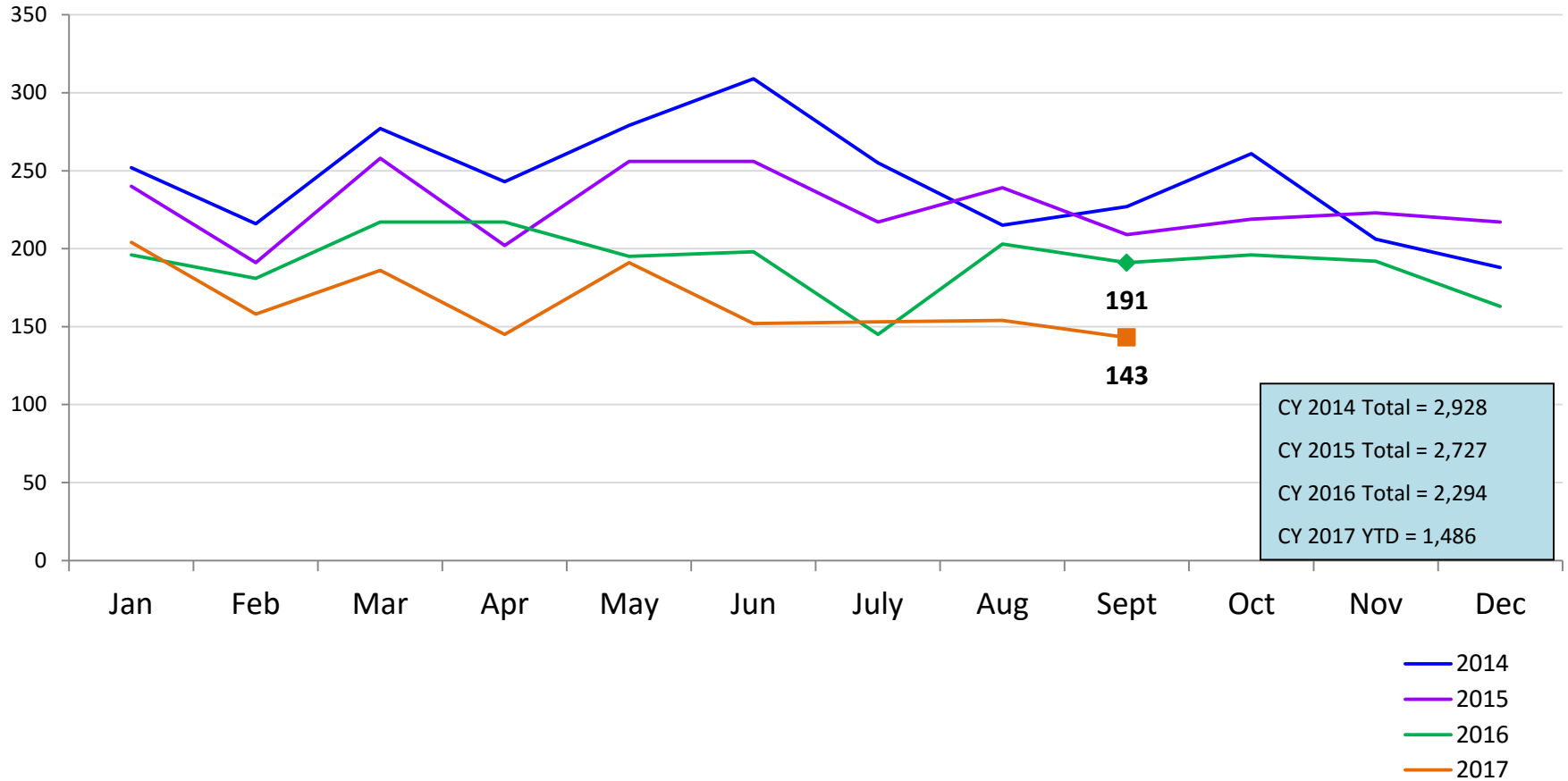
Residential Care Capacity and Utilization August 2016 – August 2017



	Aug 2016	Sep 2016	Oct 2016	Nov 2016	Dec 2016	Jan 2017	Feb 2017	Mar 2017	Apr 2017	May 2017	Jun 2017	Jul 2017	Aug 2017
Capacity	1,055	1,055	1,043	1,043	1,043	1,043	1,043	1,043	1,043	1,043	1,043	1,045	1,045

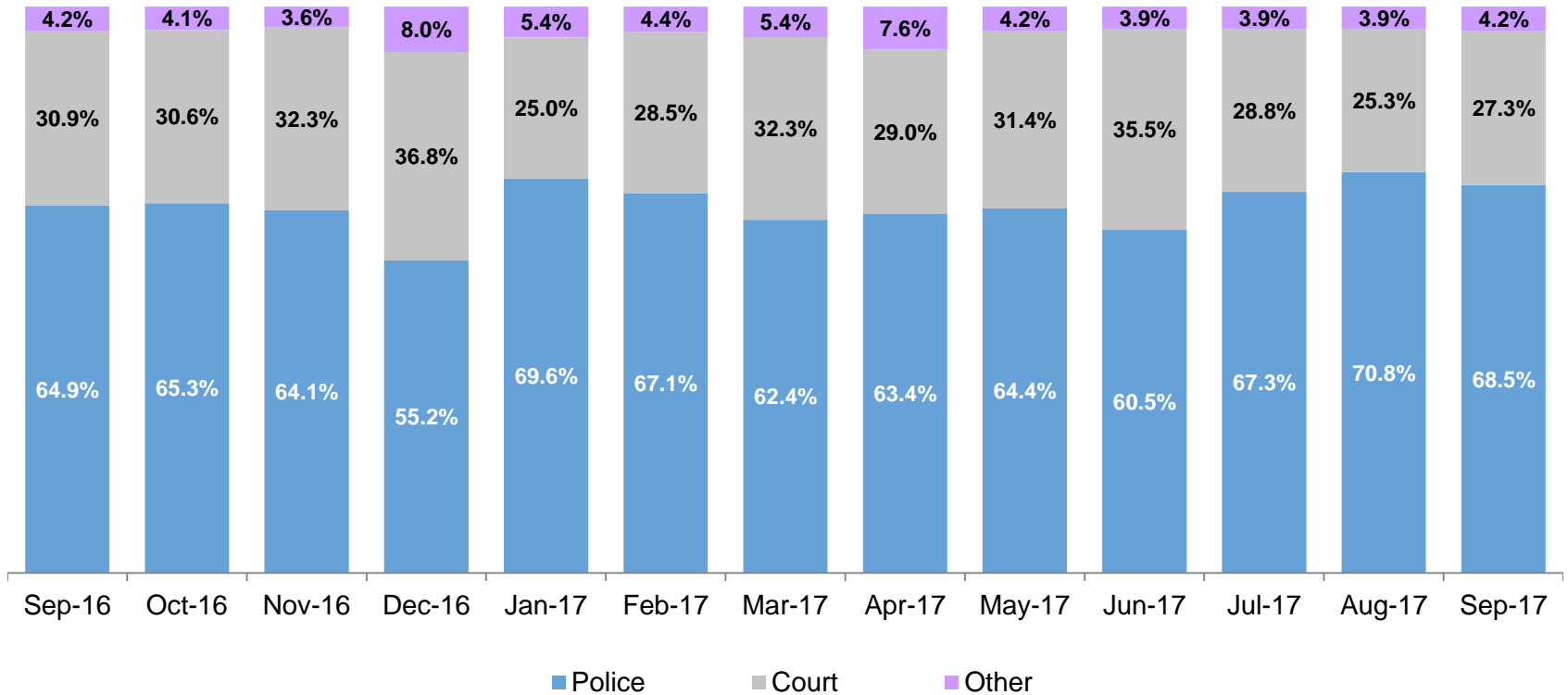
Total Monthly Admissions to Detention

January 2014 – September 2017 (Monthly Total)



Admit Authority, Detention Admissions

September 2016 – September 2017 (Monthly Total)

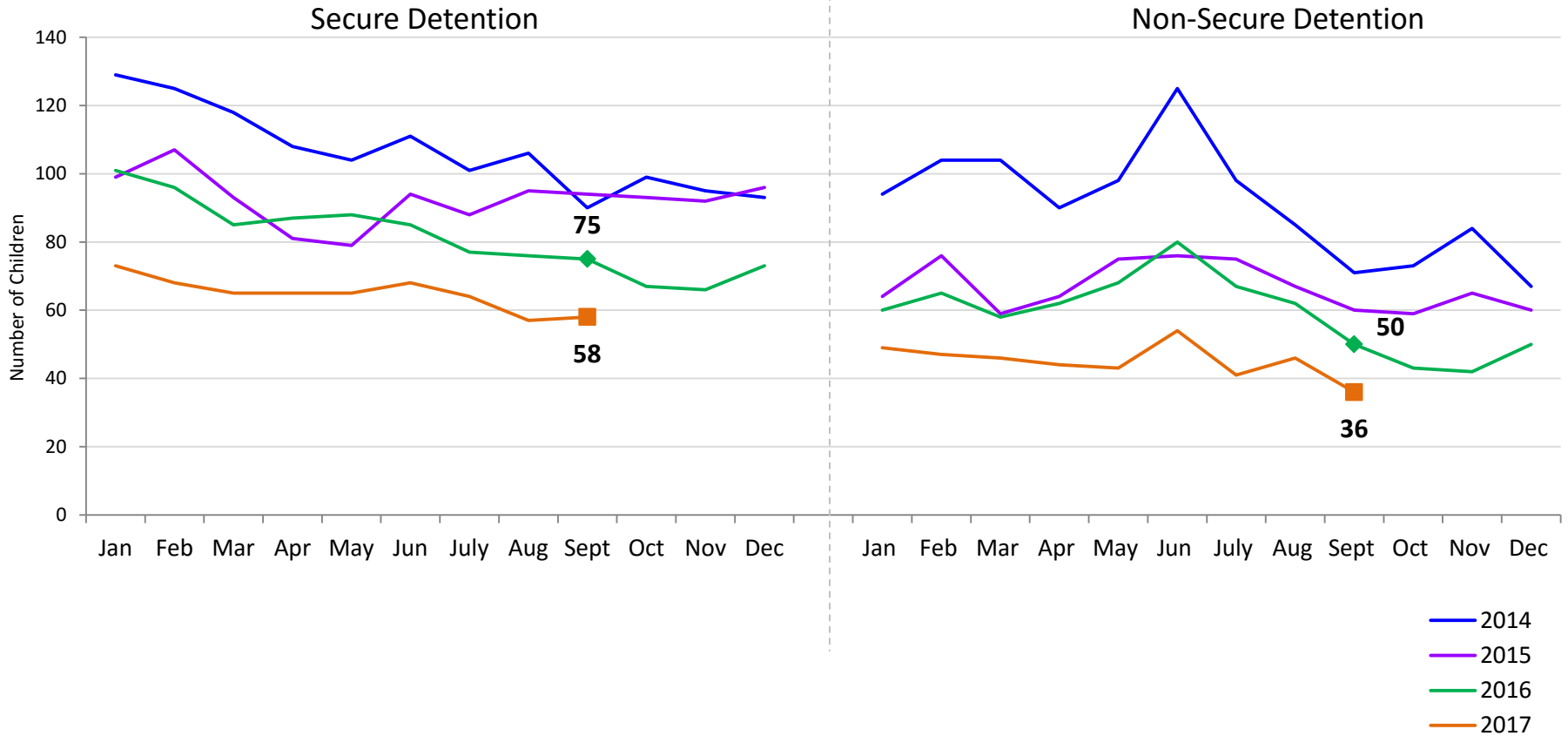


	Sep-16	Oct-16	Nov-16	Dec-16	Jan-17	Feb-17	Mar-17	Apr-17	May-17	Jun-17	Jul-17	Aug-17	Sep-17
Number of Admissions	191	196	192	163	204	158	186	145	191	152	153	154	143

Note: Other Admit Authority includes the Sheriff Department, Department of Corrections and ACS.

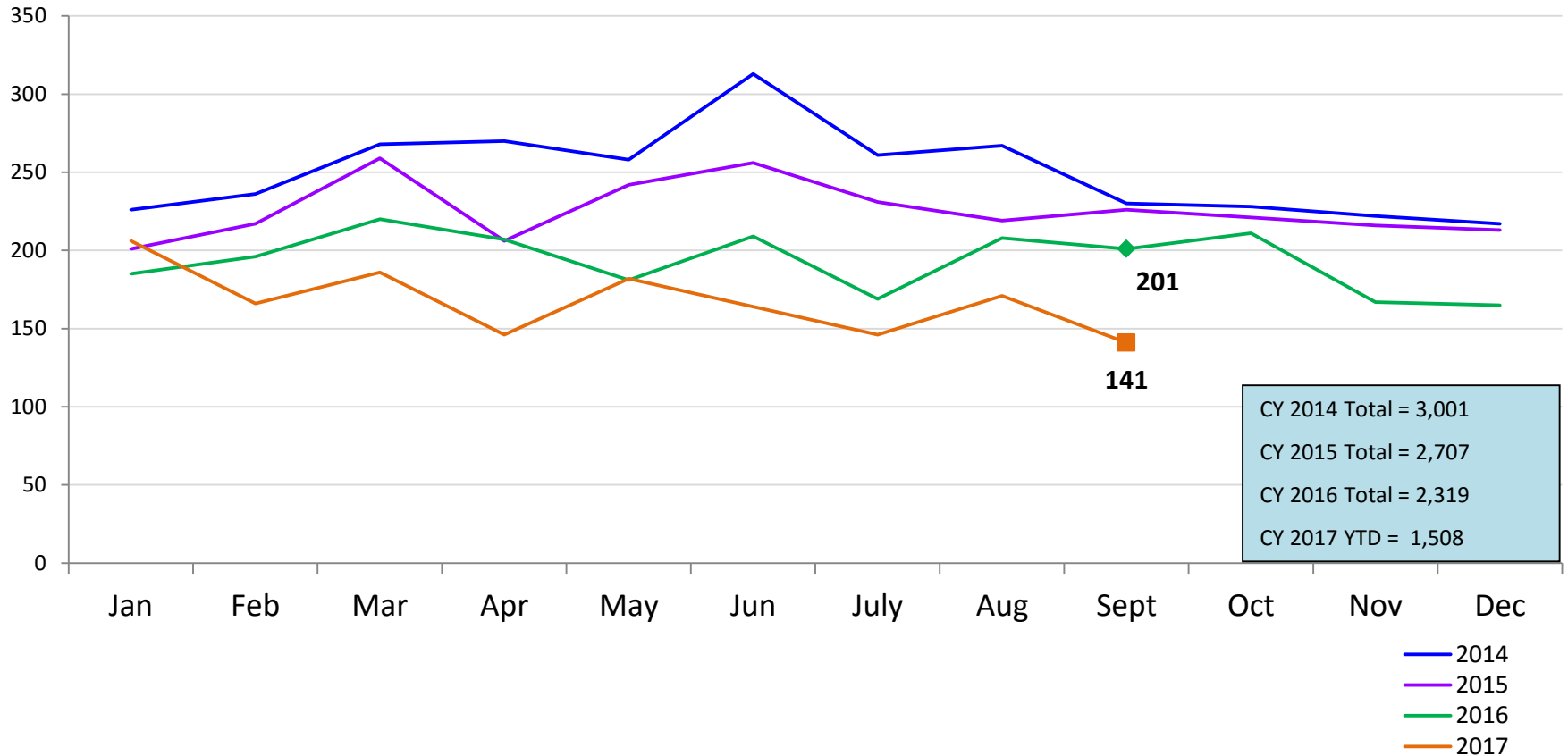
Monthly Average Daily Population

January 2014 – September 2017



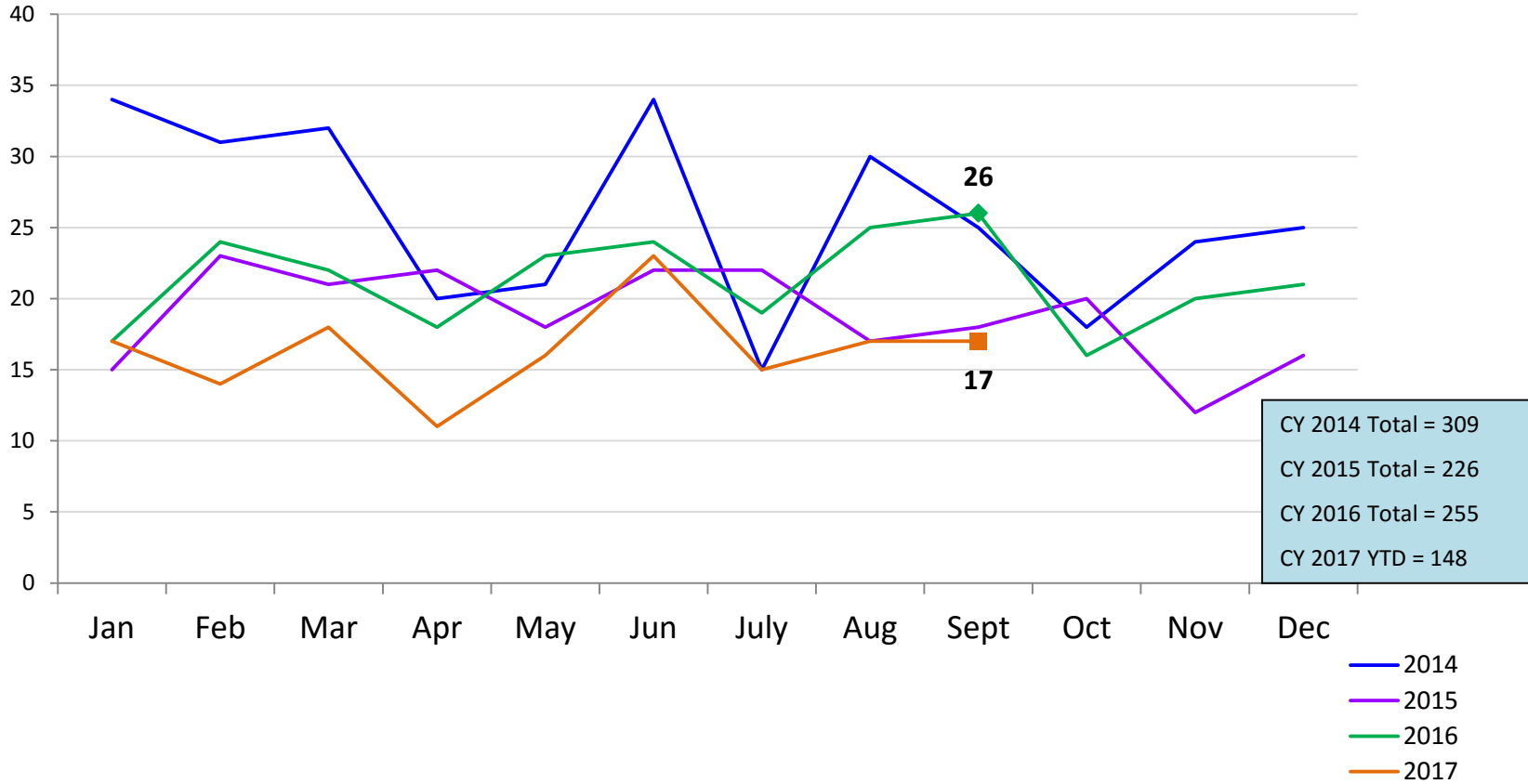
Total Monthly Releases from Detention

January 2014 – September 2017 (Monthly Total)



Close to Home Admissions*

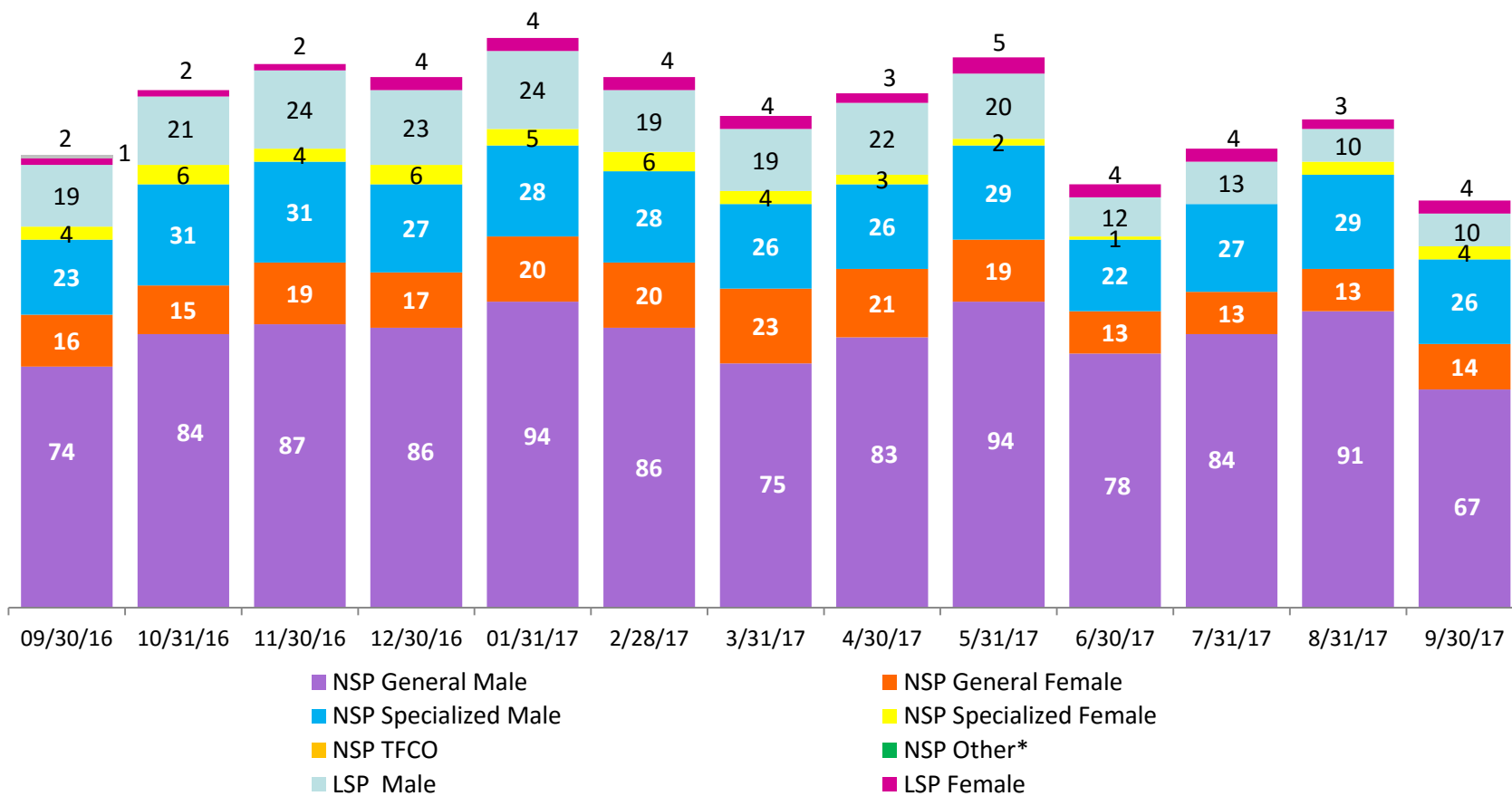
January 2014 – September 2017 (Monthly Total)



*Beginning in December 2015 Close to Home admissions include LSP as well as NSP.

CTH Placement, in 24-hour Care

September 2016 – September 2017 (end of month)

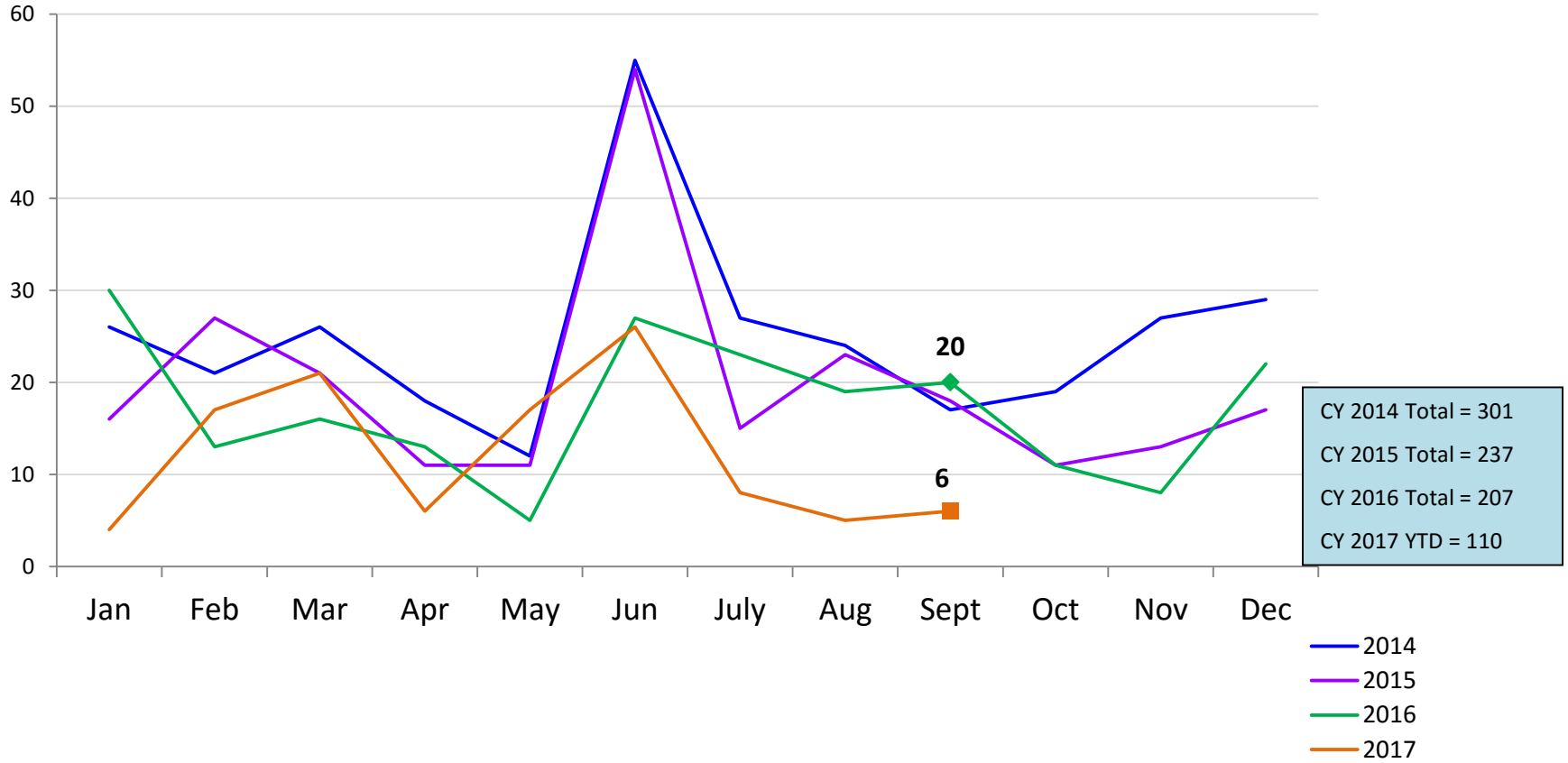


Number in Placement													
	9/30/16	10/31/16	11/30/16	12/30/16	1/31/17	2/28/17	3/31/17	4/30/17	5/31/17	6/30/17	7/31/17	8/31/17	9/30/17
NSP	117	136	141	136	147	140	128	133	144	114	124	137	111
LSP	22	23	26	27	28	23	23	25	25	16	17	13	14

*NSP Other includes youth in child welfare and mother/child placements.

Releases from Close to Home Placement to Aftercare

January 2014 – September 2017 (Monthly Total)



Appendix

Figure 1: SCR Intakes by Borough, JUL 16 - SEP 16 and JUL 17 - SEP 17

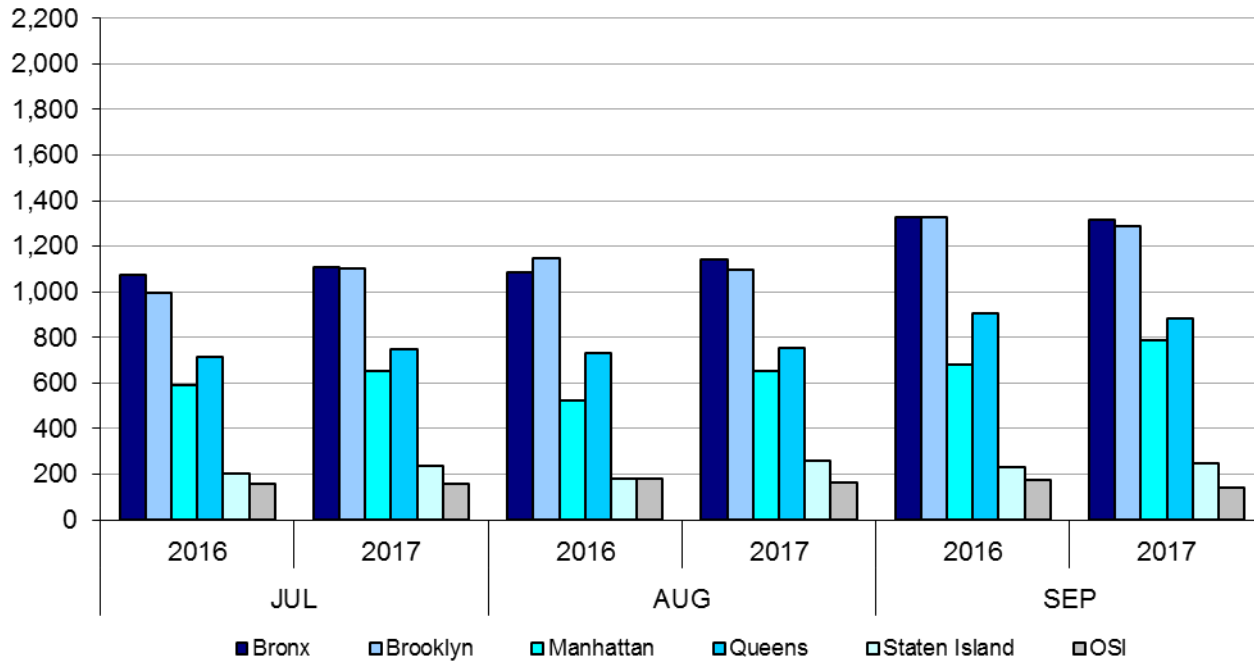


Table 1 - SCR Intake Changes by Borough, JUL 16 - SEP 16 and JUL 17 - SEP 17

Month	Year	Bronx	Brooklyn	Manhattan	Queens	Staten Island	OSI	Other	Total
JUL	2016	1,072	993	589	712	202	158	174	3,900
	2017	1,109	1,103	652	749	235	156	180	4,184
	% Change	3.5%	11.1%	10.7%	5.2%	16.3%	-1.3%	3.4%	7.3%
AUG	2016	1,083	1,148	525	734	179	179	185	4,033
	2017	1,140	1,097	651	756	261	163	167	4,235
	% Change	5.3%	-4.4%	24.0%	3.0%	45.8%	-8.9%	-9.7%	5.0%
SEP	2016	1,329	1,328	680	908	230	173	207	4,855
	2017	1,314	1,286	787	882	247	138	162	4,816
	% Change	-1.1%	-3.2%	15.7%	-2.9%	7.4%	-20.2%	-21.7%	-0.8%
Total	2016	3,484	3,469	1,794	2,354	611	510	566	12,788
	2017	3,563	3,486	2,090	2,387	743	457	509	13,235
	% Change	2.3%	0.5%	16.5%	1.4%	21.6%	-10.4%	-10.1%	3.5%

Figure 2: Citywide SCR Intakes by Reporter Group, JUL 16 - SEP 16 and JUL 17 - SEP 17

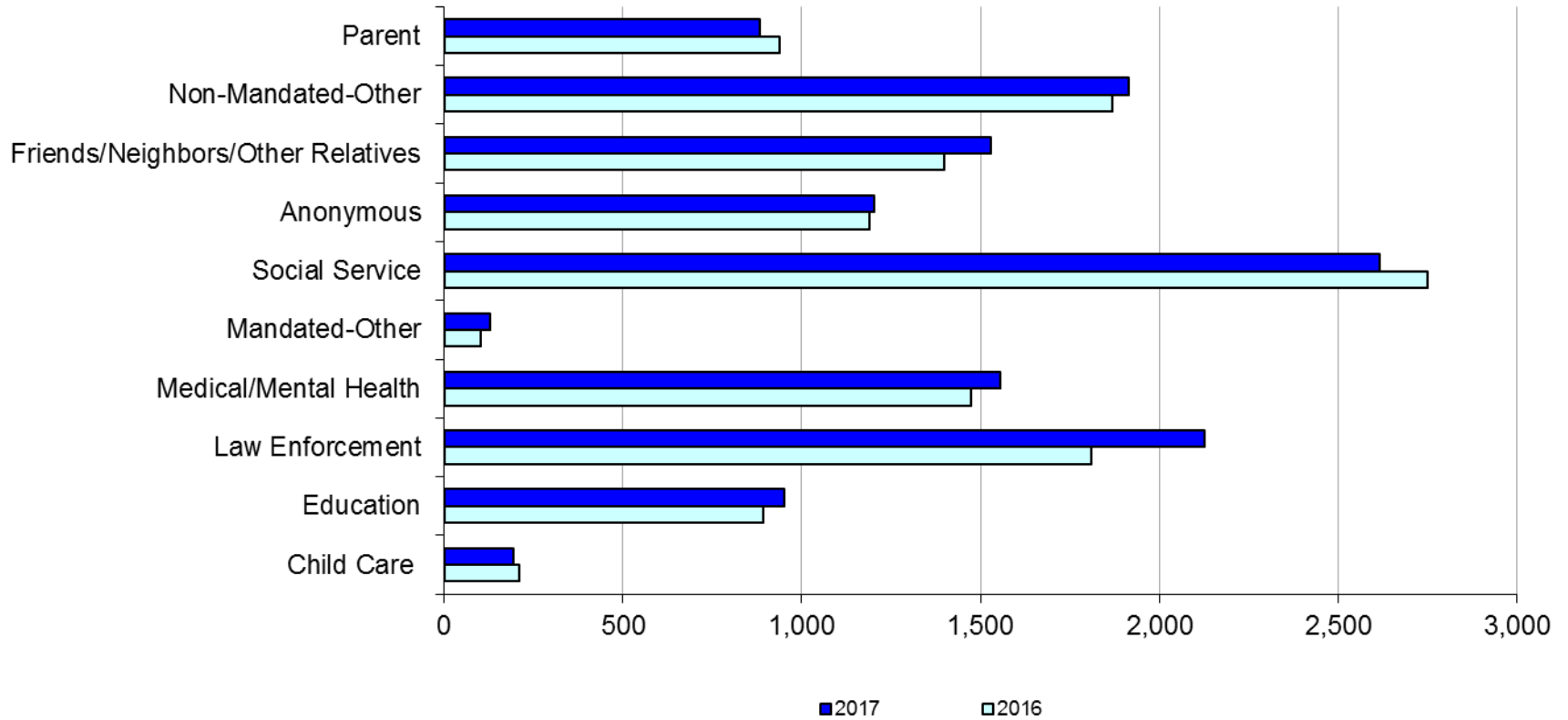
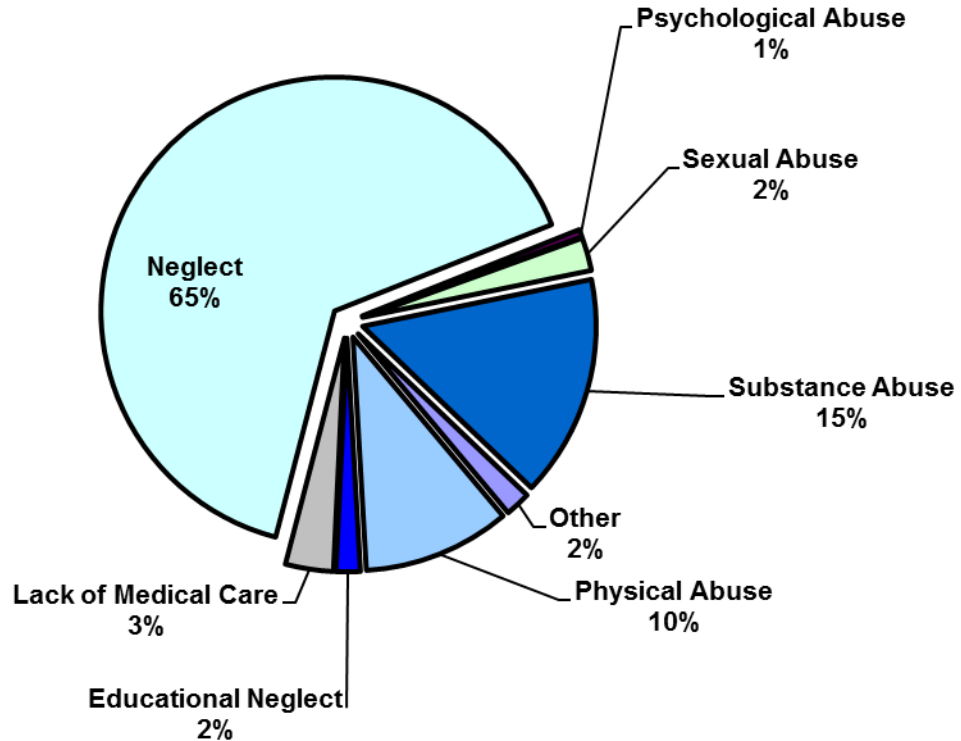


Table 2 - SCR Intakes by Reporter Group, JUL 16 - SEP 16 and JUL 17 - SEP 17

Year	Child Care/ Substitute Care Personnel	Educational Personnel	Law Enforcement	Medical/ Mental Health Personnel	Mandated- Other	Social Service Personnel	Anonymous	Friends/ Neighbors/ Other Relatives	Non- Mandated- Other	Parent	Foster Parent	*Total
Bronx												
2016	53	260	439	399	35	810	334	394	530	228	0	3,484
2017	44	260	556	430	35	666	341	485	511	233	1	3,563
% Change	-17.0%	0.0%	26.7%	7.8%	0.0%	-17.8%	2.1%	23.1%	-3.6%	2.2%	--	2.3%
Brooklyn												
2016	47	269	580	379	28	675	334	413	498	242	1	3,469
2017	56	275	649	401	23	668	313	383	506	211	0	3,486
% Change	19.1%	2.2%	11.9%	5.8%	-17.9%	-1.0%	-6.3%	-7.3%	1.6%	-12.8%	-100.0%	0.5%
Manhattan												
2016	34	106	307	226	10	387	149	163	284	126	0	1,794
2017	33	122	372	264	19	423	224	235	287	110	0	2,090
% Change	-2.9%	15.1%	21.2%	16.8%	90.0%	9.3%	50.3%	44.2%	1.1%	-12.7%	--	16.5%
Queens												
2016	29	178	293	298	16	536	240	263	332	164	1	2,354
2017	25	212	348	294	32	512	178	246	386	148	2	2,387
% Change	-13.8%	19.1%	18.8%	-1.3%	100.0%	-4.5%	-25.8%	-6.5%	16.3%	-9.8%	100.0%	1.4%
Staten Island												
2016	10	54	73	73	3	107	79	92	78	40	2	611
2017	7	58	94	81	8	157	89	114	85	48	1	743
% Change	-30.0%	7.4%	28.8%	11.0%	166.7%	46.7%	12.7%	23.9%	9.0%	20.0%	-50.0%	21.6%
OSI												
2016	30	13	31	54	6	110	29	35	97	101	4	510
2017	25	11	31	44	11	76	40	33	106	79	1	457
% Change	-16.7%	-15.4%	0.0%	-18.5%	83.3%	-30.9%	37.9%	-5.7%	9.3%	-21.8%	-75.0%	-10.4%
Other												
2016	7	11	86	45	5	126	23	37	49	36	0	566
2017	4	14	77	42	2	113	18	33	33	53	0	509
% Change	-42.9%	27.3%	-10.5%	-6.7%	-60.0%	-10.3%	-21.7%	-10.8%	-32.7%	47.2%	--	-10.1%
Citywide												
2016	210	891	1,809	1,474	103	2,751	1,188	1,397	1,868	937	8	12,788
2017	194	952	2,127	1,556	130	2,615	1,203	1,529	1,914	882	5	13,235
% Change	-7.6%	6.8%	17.6%	5.6%	26.2%	-4.9%	1.3%	9.4%	2.5%	-5.9%	-37.5%	3.5%

*There is a small number of intakes with unknown reporter that is included in the totals.

Figure 3: SCR Allegations, JUL 17 – SEP 17



Total Allegations = 35,659

Allegations are grouped as follows: Physical Abuse - burn, fatality, fracture, choking, twisting, shaking, excessive corporal punishment, internal injuries, lacerations, bruises, welts, poisoning, noxious substances; Educational Neglect – educational neglect; Lack of Medical Care – lack of medical care; Neglect - inadequate guardianship, inadequate food, clothing, shelter, lack of supervision, malnutrition, failure to thrive, swelling, dislocations, sprains; Psychological Abuse - isolation, emotional neglect; Sexual Abuse – sexual abuse; Substance Abuse - parental drug use, child drug use; and Other - abandonment, inappropriate custodial conduct.

Table 3 - SCR Allegations, JUL 16 - SEP 16 and JUL 17 - SEP 17

Year	Physical Abuse	Educational Neglect	Lack of Medical Care	Neglect	Psychological Abuse	Sexual Abuse	Substance Abuse	Other	Total
Bronx									
2016	970	245	372	6,660	55	206	1,546	111	10,165
2017	995	203	351	6,829	38	233	1,735	100	10,484
% Change	2.6%	-17.1%	-5.6%	2.5%	-30.9%	13.1%	12.2%	-9.9%	3.1%
Brooklyn									
2016	1,009	212	348	6,320	41	233	1,384	122	9,669
2017	995	180	339	6,055	52	237	1,325	128	9,311
% Change	-1.4%	-15.1%	-2.6%	-4.2%	26.8%	1.7%	-4.3%	4.9%	-3.7%
Manhattan									
2016	422	87	144	2509	22	72	539	77	3,872
2017	420	77	153	2681	20	108	747	56	4,262
% Change	-0.5%	-11.5%	6.3%	6.9%	-9.1%	50.0%	38.6%	-27.3%	10.1%
Queens									
2016	690	77	201	3,810	47	154	838	184	6,001
2017	698	92	197	4,237	48	116	900	182	6,470
% Change	1.2%	19.5%	-2.0%	11.2%	2.1%	-24.7%	7.4%	-1.1%	7.8%
Staten Island									
2016	145	33	53	1,218	12	39	325	38	1,863
2017	162	25	54	1,459	1	31	443	63	2,238
% Change	11.7%	-24.2%	1.9%	19.8%	-91.7%	-20.5%	36.3%	65.8%	20.1%
OSI									
2016	299	13	79	1,363	12	78	163	11	2,018
2017	273	4	43	1,372	9	64	206	2	1,973
% Change	-8.7%	-69.2%	-45.6%	0.7%	-25.0%	-17.9%	26.4%	-81.8%	-2.2%
Other									
2016	103	16	38	606	7	24	168	87	1,049
2017	92	15	44	514	15	27	119	95	921
% Change	-10.7%	-6.3%	15.8%	-15.2%	114.3%	12.5%	-29.2%	9.2%	-12.2%
Citywide									
2016	3,638	683	1,235	22,486	196	806	4,963	630	34,637
2017	3,635	596	1,181	23,147	183	816	5,475	626	35,659
% Change	-0.1%	-12.7%	-4.4%	2.9%	-6.6%	1.2%	10.3%	-0.6%	3.0%

**TABLE 4 - Child Welfare Preventive Cases
New and Closed
January 2014 to September 2017**

Month	New Cases	Closed Cases
2014		
Jan-14	841	686
Feb-14	885	726
Mar-14	998	930
Apr-14	919	941
May-14	919	982
Jun-14	890	826
Jul-14	973	1,168
Aug-14	826	1,102
Sep-14	841	771
Oct-14	835	917
Nov-14	677	788
Dec-14	1,062	821
2015		
Jan-15	728	792
Feb-15	902	751
Mar-15	1,122	831
Apr-15	977	932
May-15	914	999
Jun-15	1,068	930
Jul-15	899	1,217
Aug-15	893	1,064
Sep-15	764	964
Oct-15	749	889
Nov-15	746	807
Dec-15	1,013	881
2016		
Jan-16	792	770
Feb-16	897	795
Mar-16	1,029	978
Apr-16	836	892
May-16	890	966
Jun-16	996	935
Jul-16	842	1,069
Aug-16	897	1,006
Sep-16	821	850
Oct-16	776	627
Nov-16	728	490
Dec-16	816	462
2017		
Jan-17	548	449
Feb-17	602	920
Mar-17	864	1,032
Apr-17	645	780
May-17	790	925
Jun-17	908	944
Jul-17	765	852
Aug-17	875	864
Sep-17	824	751

**Table 5 - Referrals to Child Welfare Protective Services by Source
January 2014 to September 2017**

Month	Total Referrals	Division of Child Protection	Foster Care Agencies	PPRS Transfer	School	Self	Other Sources*
2014							
Jan-14	1,537	70.0%	1.2%	6.6%	2.3%	5.8%	14.2%
Feb-14	1,334	69.7%	0.8%	8.4%	1.7%	5.5%	13.9%
Mar-14	1,612	70.0%	1.4%	8.6%	1.6%	5.3%	13.1%
Apr-14	1,525	70.2%	0.9%	7.6%	2.1%	3.7%	15.4%
May-14	1,580	74.4%	0.7%	8.3%	1.4%	5.2%	10.0%
Jun-14	1,550	78.6%	1.2%	6.3%	1.2%	3.2%	9.4%
Jul-14	1,659	79.6%	1.5%	6.7%	0.4%	4.2%	7.6%
Aug-14	1,395	72.2%	1.6%	10.8%	0.3%	4.9%	10.3%
Sep-14	1,597	49.4%	1.5%	7.6%	0.3%	4.5%	36.8%
Oct-14	1,634	68.2%	1.9%	10.0%	1.2%	4.6%	14.1%
Nov-14	1,311	66.4%	0.9%	14.3%	2.4%	3.9%	12.1%
Dec-14	1,785	71.1%	1.4%	8.8%	2.9%	4.8%	11.0%
CY 2014	18,519	70.1%	1.3%	8.6%	1.5%	4.6%	14.0%
2015							
Jan-15	1,430	74.4%	1.6%	8.7%	1.8%	3.8%	9.7%
Feb-15	1,538	76.5%	0.8%	8.1%	1.8%	4.7%	8.2%
Mar-15	1,798	74.6%	0.9%	7.3%	1.6%	4.8%	10.8%
Apr-15	1,719	78.2%	1.3%	7.2%	0.6%	3.5%	9.1%
May-15	1,561	77.2%	1.0%	5.1%	1.5%	4.5%	10.8%
Jun-15	1,716	77.4%	1.1%	7.7%	1.2%	3.5%	9.1%
Jul-15	1,511	79.6%	0.9%	7.2%	0.3%	3.8%	8.2%
Aug-15	1,418	79.3%	2.2%	7.8%	0.2%	3.1%	7.5%
Sep-15	1,209	72.1%	2.8%	10.4%	0.5%	5.5%	8.6%
Oct-15	1,338	70.4%	1.9%	8.3%	2.1%	5.8%	11.6%
Nov-15	1,220	68.2%	1.8%	9.6%	1.4%	6.2%	12.8%
Dec-15	1,526	73.5%	1.6%	8.0%	2.0%	5.0%	9.9%
2016							
Jan-16	1,370	73.6%	1.6%	8.2%	0.7%	5.4%	10.6%
Feb-16	1,436	75.8%	2.2%	7.8%	1.0%	3.8%	9.3%
Mar-16	1,557	72.0%	2.1%	8.8%	1.0%	4.6%	11.4%
Apr-16	1,378	76.1%	1.5%	7.4%	1.5%	3.5%	10.0%
May-16	1,386	73.4%	1.4%	8.7%	1.0%	4.7%	10.8%
Jun-16	1,564	77.2%	2.4%	6.2%	1.5%	4.1%	8.6%
Jul-16	1,338	80.3%	1.7%	6.4%	1.0%	4.2%	6.4%
Aug-16	1,385	79.1%	1.8%	7.1%	0.4%	4.0%	7.6%
Sep-16	1,297	77.8%	2.1%	7.5%	0.8%	4.5%	7.4%
Oct-16	1,247	70.1%	2.0%	7.6%	1.5%	5.9%	12.9%
Nov-16	1,229	67.8%	2.0%	7.8%	1.2%	5.5%	15.8%
Dec-16	1,175	76.0%	1.5%	7.1%	1.3%	3.8%	10.3%
2017							
Jan-17	1,046	78.5%	1.4%	6.7%	0.7%	3.1%	9.7%
Feb-17	1,067	77.7%	0.8%	6.7%	0.8%	3.8%	10.1%
Mar-17	1,383	79.1%	0.6%	6.9%	0.9%	4.0%	8.5%
Apr-17	1,116	81.2%	1.0%	5.9%	1.1%	1.4%	9.4%
May-17	1,335	81.9%	0.9%	5.5%	1.3%	2.8%	7.6%
Jun-17	1,449	82.3%	0.8%	5.9%	1.2%	2.9%	6.9%
Jul-17	1,273	83.3%	0.9%	7.9%	0.7%	1.9%	5.3%
Aug-17	1,431	82.6%	0.6%	9.4%	0.3%	1.7%	5.3%
Sep-17	1,398	80.6%	1.4%	8.1%	0.7%	2.4%	6.8%

*Other Community Sources includes the Department of Homeless Services, Family Court, FAP, Hospitals and Medical facilities, the NYC Housing Authority, Probation, and Sponsor Agencies.