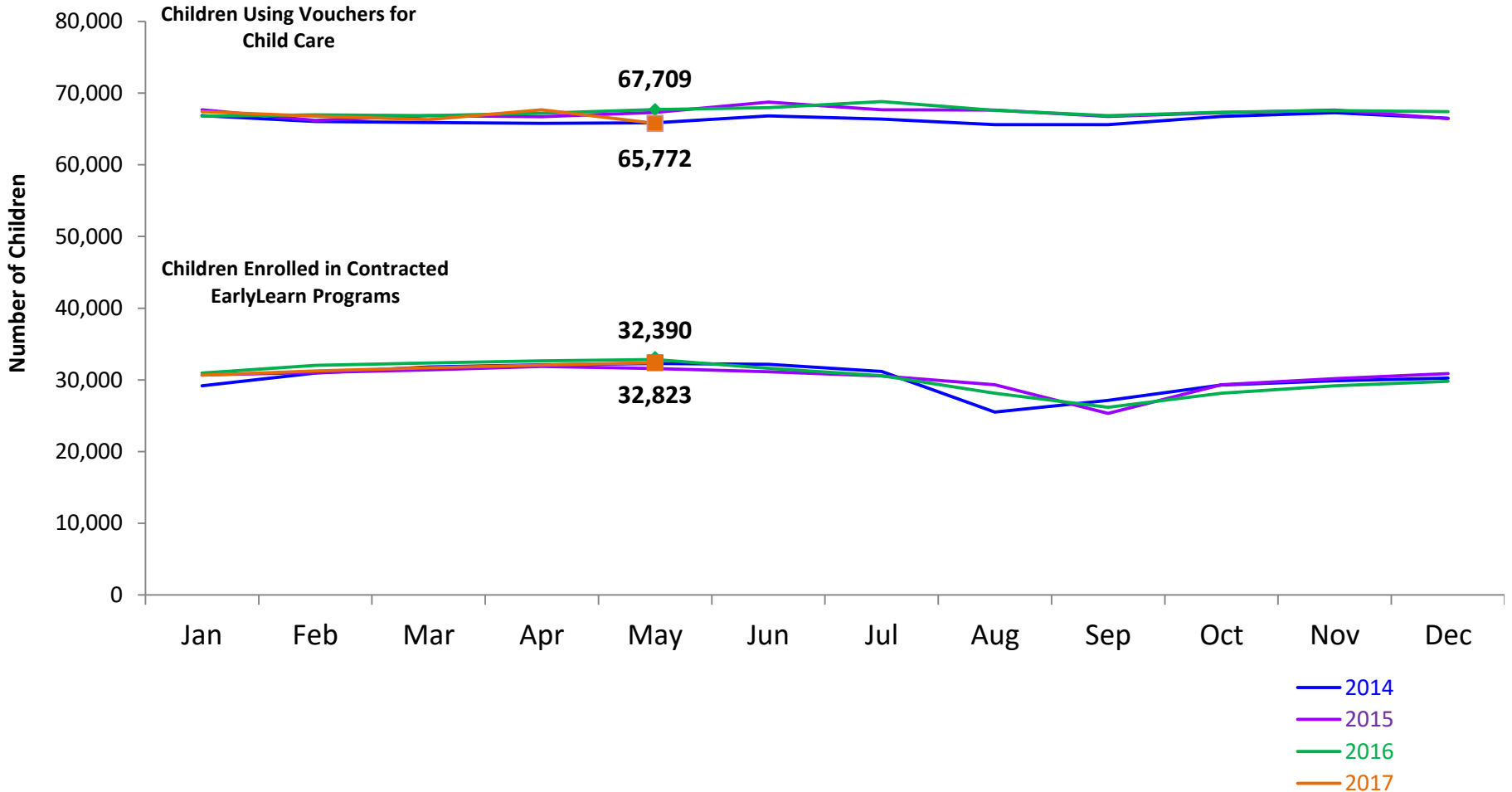




Flash

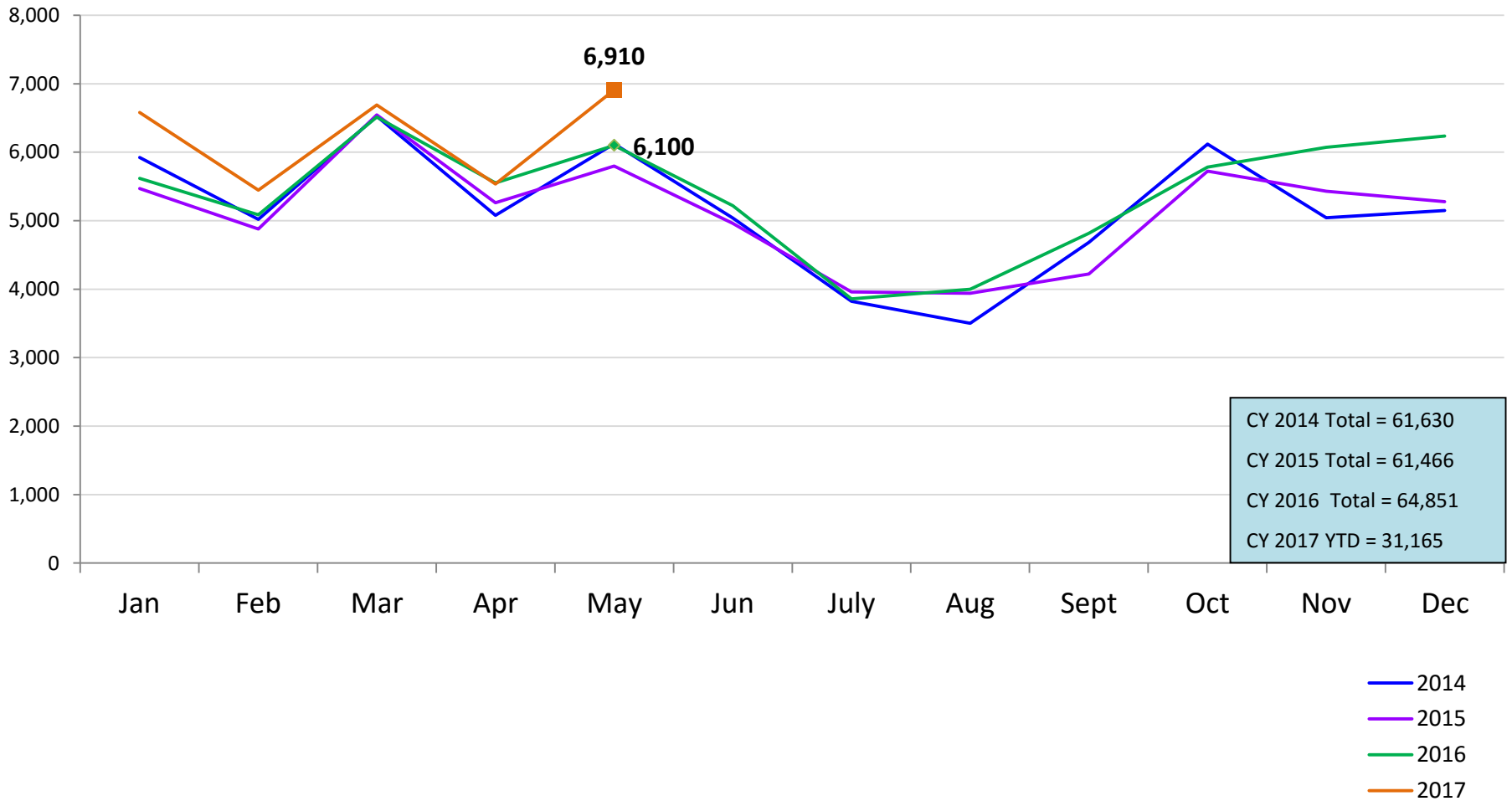
June 2017

Children Enrolled in Contracted EarlyLearn Programs and Children Using Vouchers for Child Care January 2014 – May 2017(End of Month)



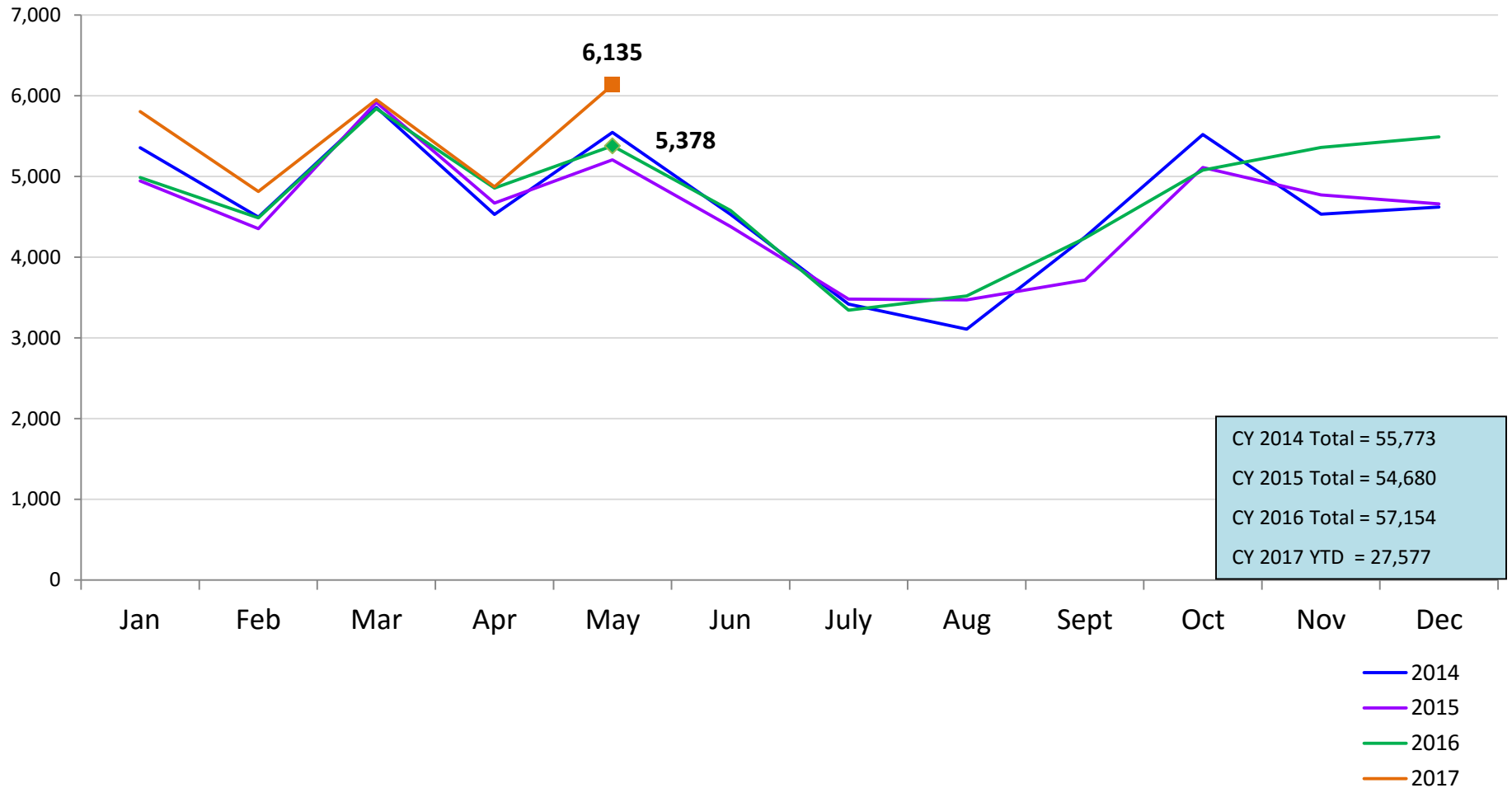
SCR Intakes

January 2014 – May 2017 (Monthly Total)



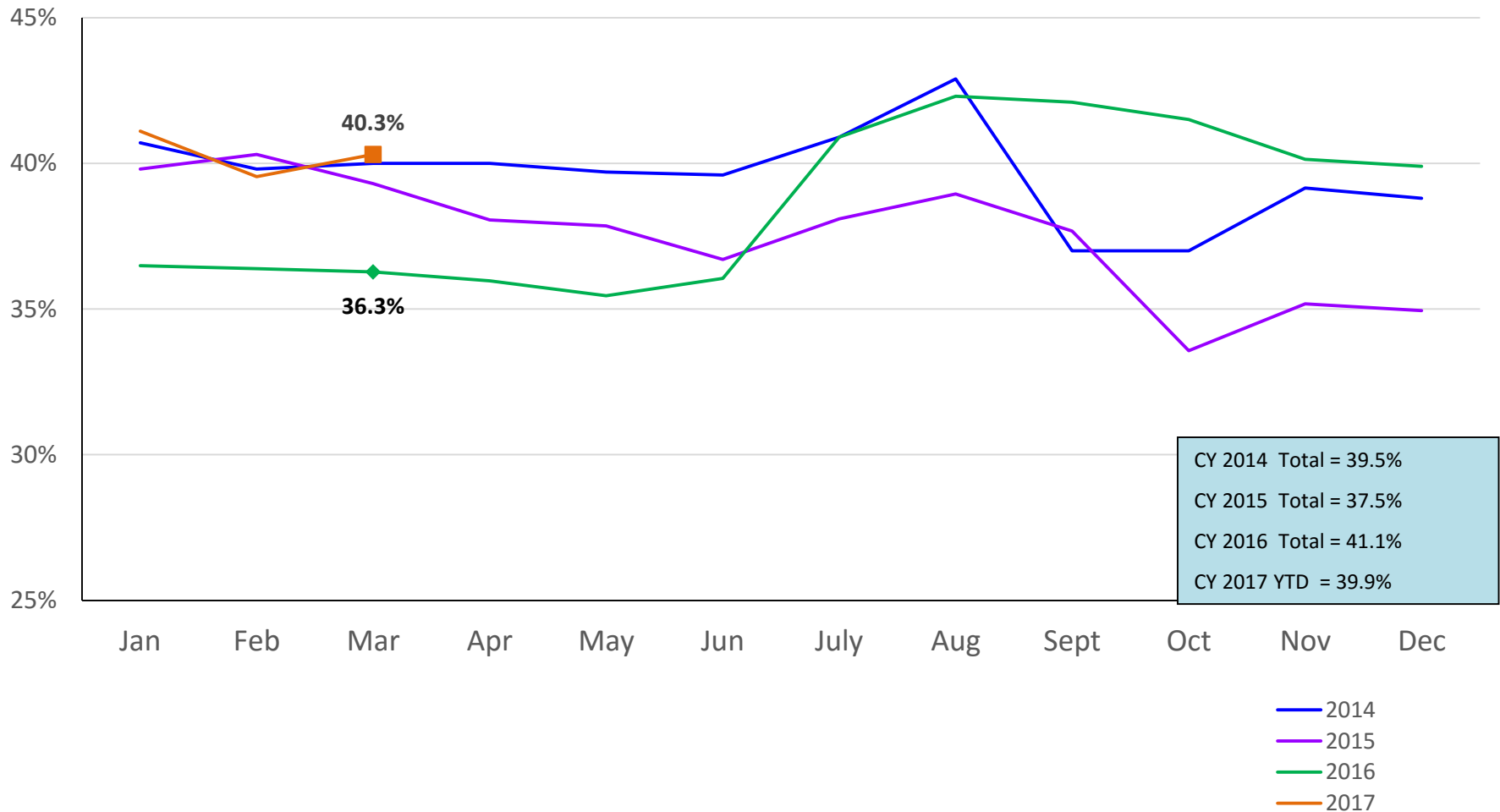
SCR Consolidated Investigations

January 2014 – May 2017 (Monthly Total)



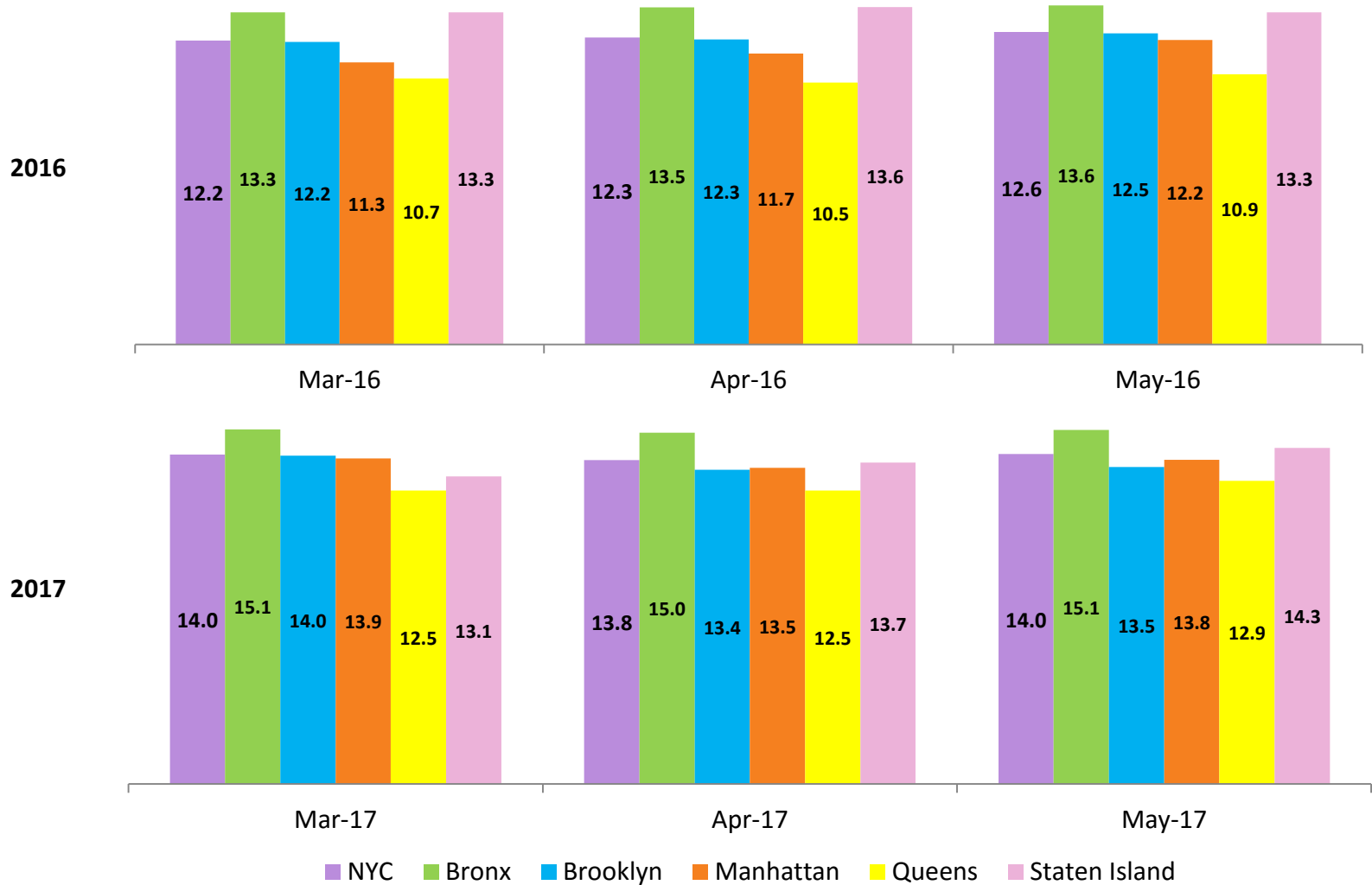
SCR Investigation Indication Rate

January 2014 – March 2017



Average P/D Combined Caseload*

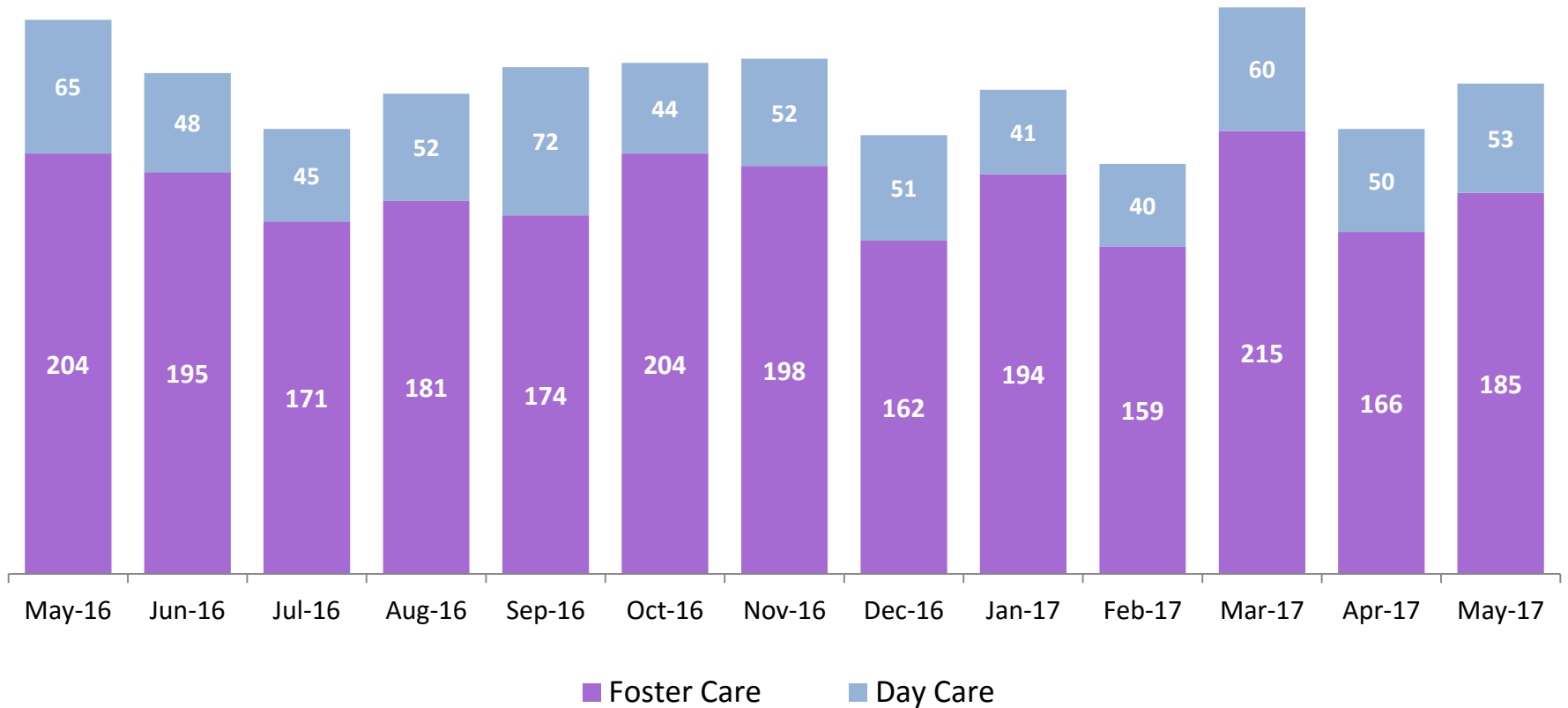
March – May 2016 & March – May 2017



* Caseloads are of protective/diagnostic caseworkers only and exclude the caseloads carried by Level I and Level II Supervisors.

OSI Investigations

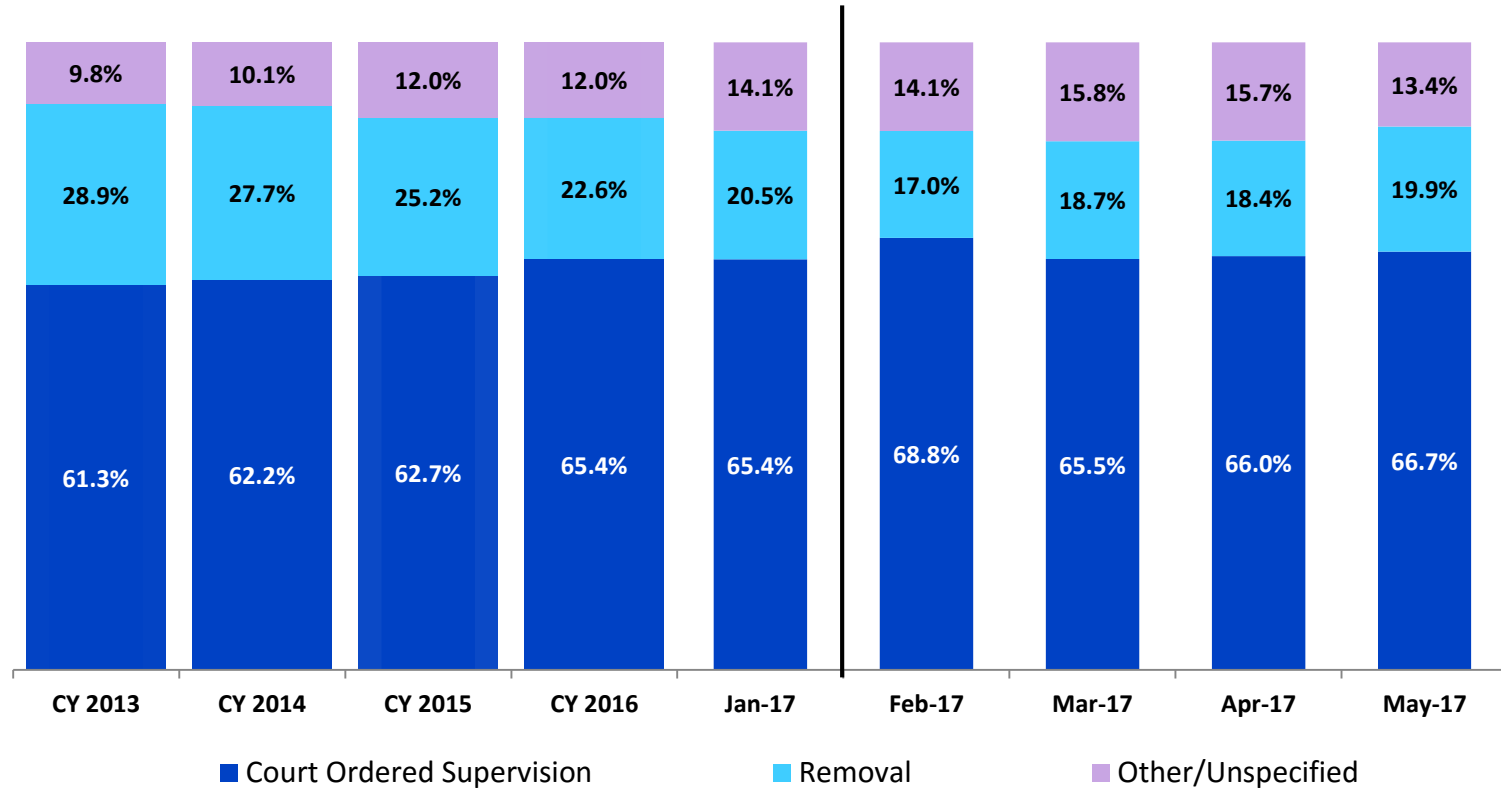
May 2016 – May 2017



	May 2016	Jun 2016	Jul 2016	Aug 2016	Sep 2016	Oct 2016	Nov 2016	Dec 2016	Jan 2017	Feb 2017	Mar 2017	Apr 2017	May 2017
Number of Investigations	269	243	216	233	246	248	250	213	235	199	275	216	238

Article 10 Filings and Initial Hearing Outcomes, Children

CY 2013 – May 2017

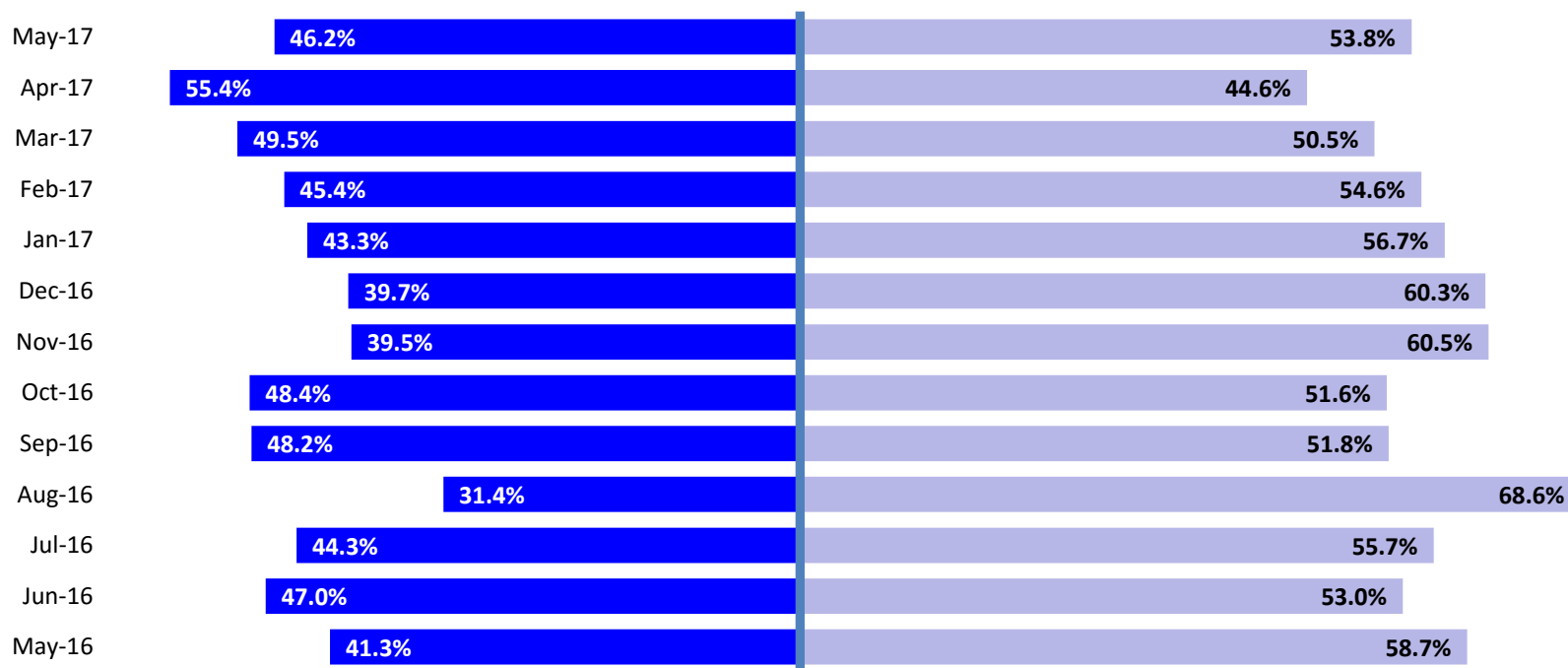


	CY 2013	CY 2014	CY 2015	CY 2016	Jan 2017	Feb 2017	Mar 2017	April 2017	May 2017
Children with Article 10 Filings	9,318	9,900	10,243	11,453	1,354	1,139	1,553	1,307	1,533

Note: The category "Other/Unspecified" includes released with no supervision, no order issued and no outcome specified.

Article 10 Filing Removals, Court Approved at Initial Hearing, Children

May 2016 – May 2017

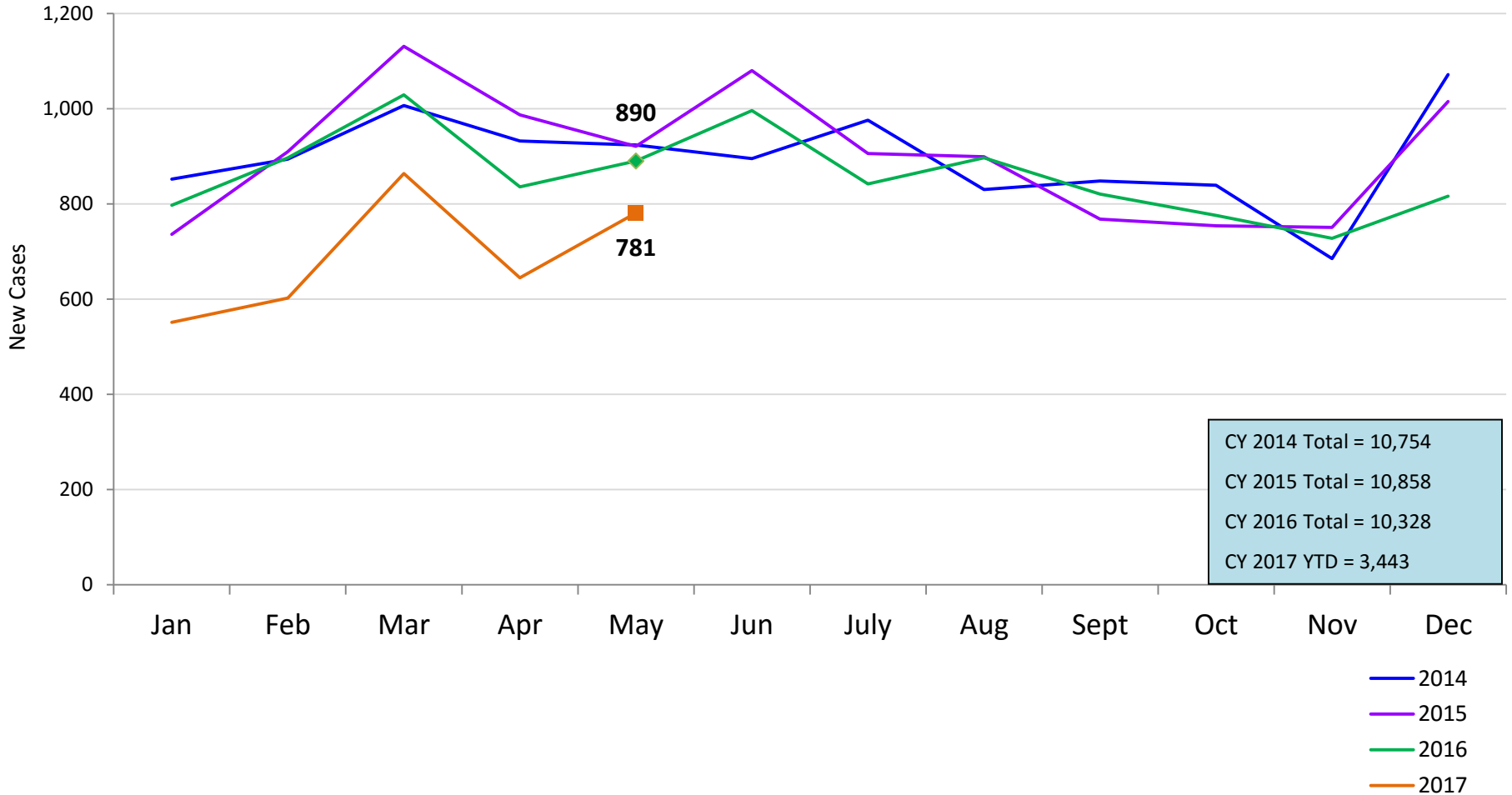


■ Pre-Filing Emergency Removals (court approved at initial hearing) ■ Post-Filing Removals (court ordered at initial hearing)

	May 2016	June 2016	July 2016	Aug 2016	Sep 2016	Oct 2016	Nov 2016	Dec 2016	Jan 2017	Feb 2017	Mar 2017	Apr 2017	May 2017
Children Removed	150	183	210	204	199	312	223	287	277	194	291	240	305

New Child Welfare Preventive Cases*

January 2014 – May 2017



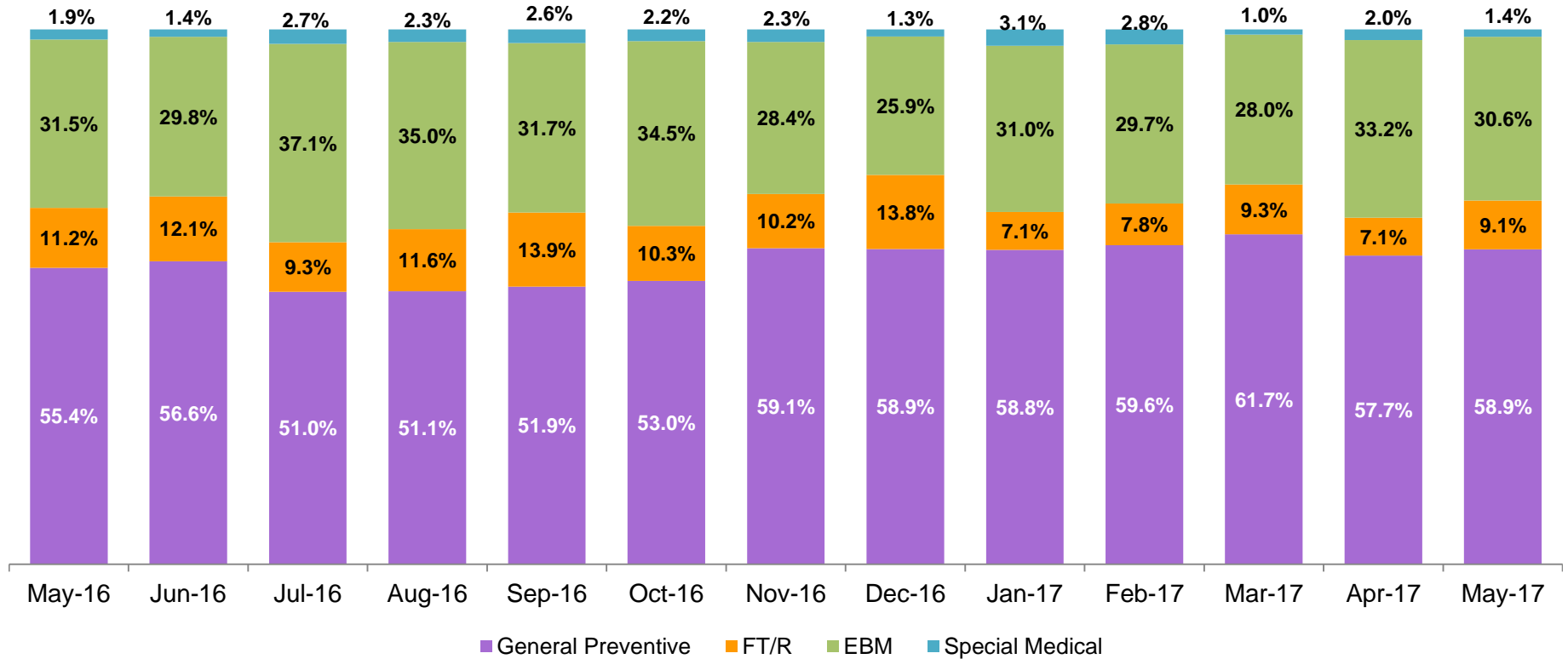
CY 2014 Total = 10,754
 CY 2015 Total = 10,858
 CY 2016 Total = 10,328
 CY 2017 YTD = 3,443

- 2014
- 2015
- 2016
- 2017

* New preventive cases do not include cases transferred from one preventive program to another. See Pages 33 and 34 of the Appendix for supporting data.

New Child Welfare Preventive Cases by Program Type *

May 2016 – May 2017

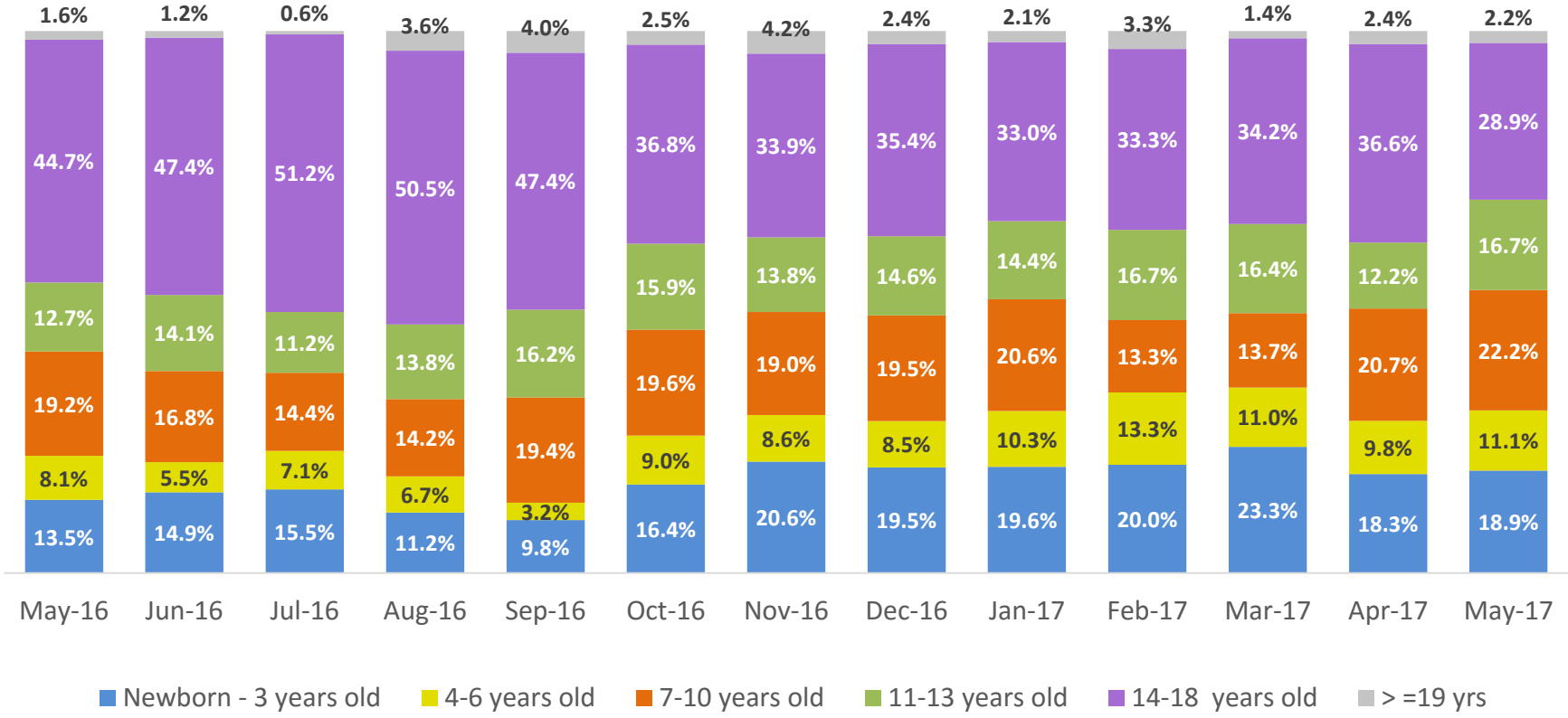


	May 2016	June 2016	July 2016	Aug 2016	Sep 2016	Oct 2016	Nov 2016	Dec 2016	Jan 2017	Feb 2017	Mar 2017	Apr 2017	May 2017
Number of New Preventive Cases	890	996	842	897	821	776	728	816	551	602	864	645	781

* New preventive cases exclude cases transferred from one preventive program to another.

Average Daily Children’s Center Population

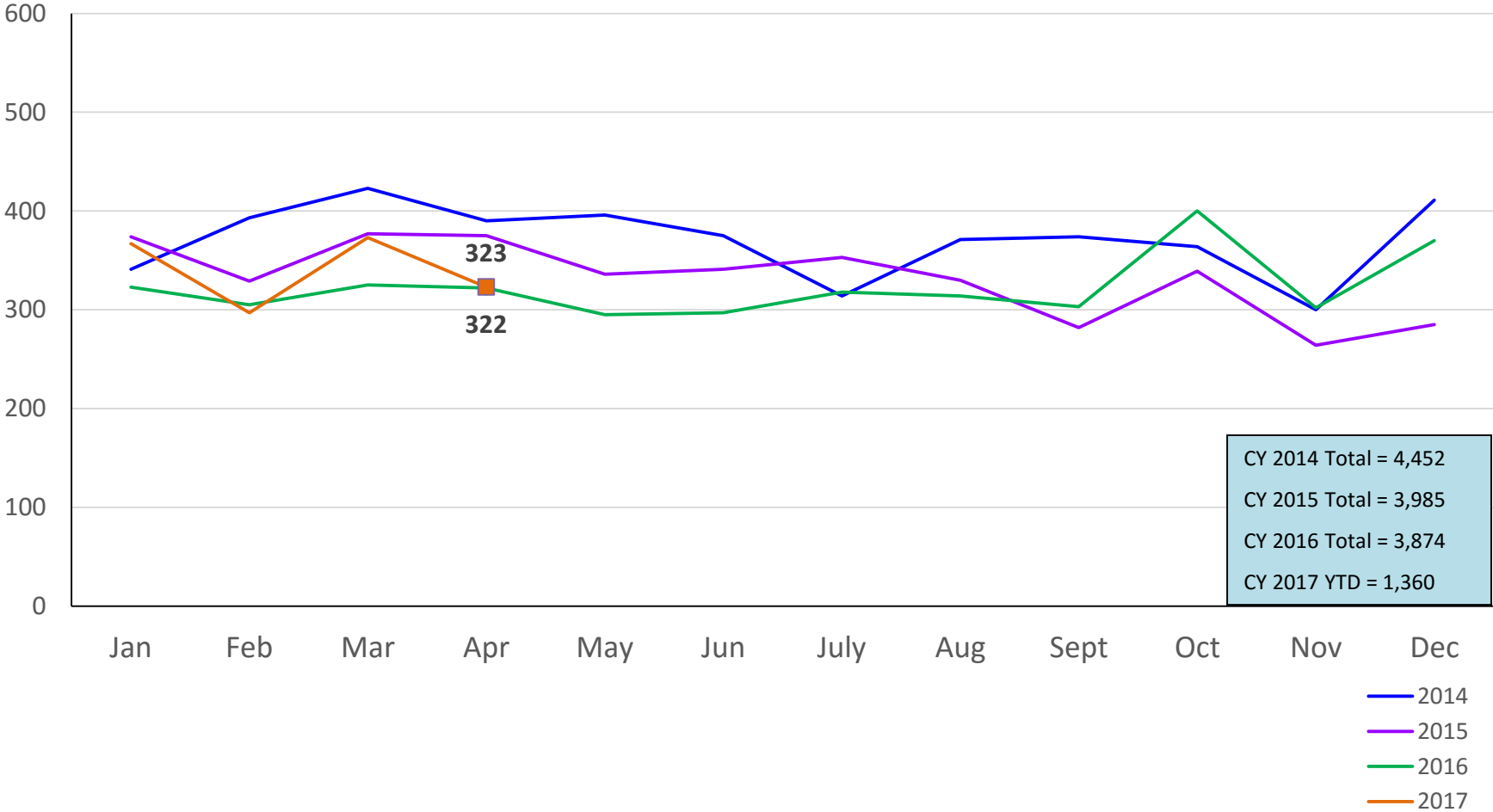
May 2016 – May 2017



	May 2016	Jun 2016	Jul 2016	Aug 2016	Sep 2016	Oct 2016	Nov 2016	Dec 2016	Jan 2017	Feb 2017	Mar 2017	Apr 2017	May 2017
Average Number of Children	34	40	50	56	54	71	62	82	97	60	73	82	90

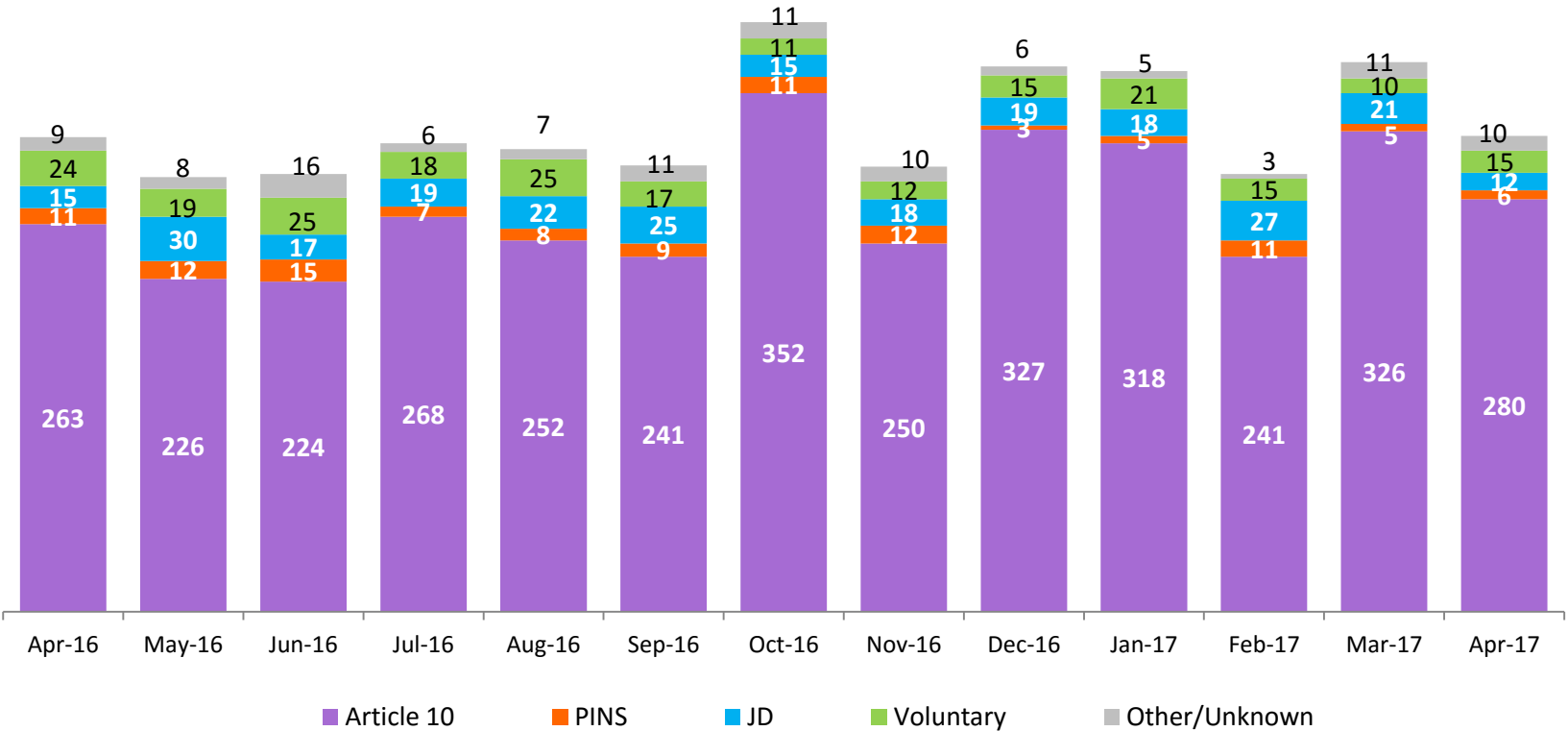
New Monthly Placements of Children into Foster Care

January 2014 – April 2017



Reason for New Placements of Children into Foster Care

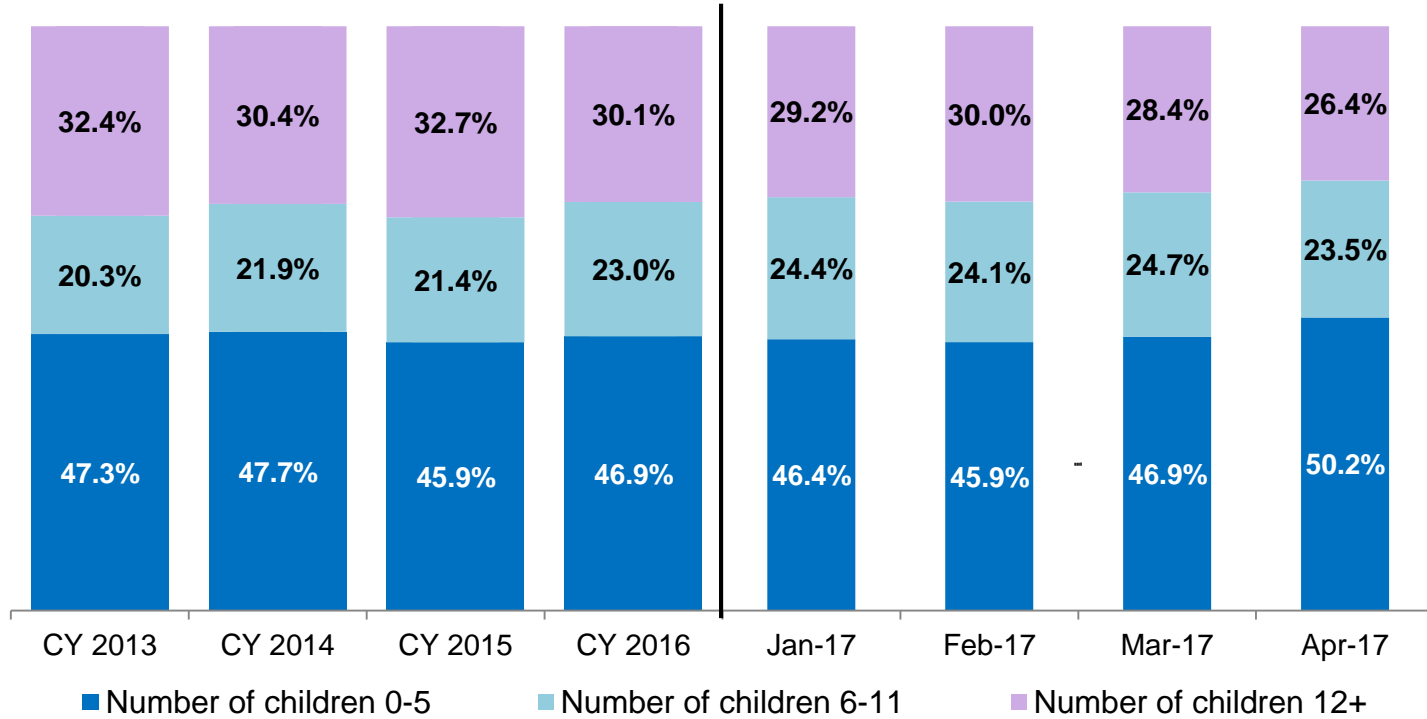
April 2016 – April 2017



	Apr 2016	May 2016	Jun 2016	Jul 2016	Aug 2016	Sep 2016	Oct 2016	Nov 2016	Dec 2016	Jan 2017	Feb 2017	Mar 2017	Apr 2017
Number of Placements	322	295	297	318	314	303	400	302	370	367	297	373	323

New Placements of Children into Foster Care* by Age

CY 2013 - April 2017

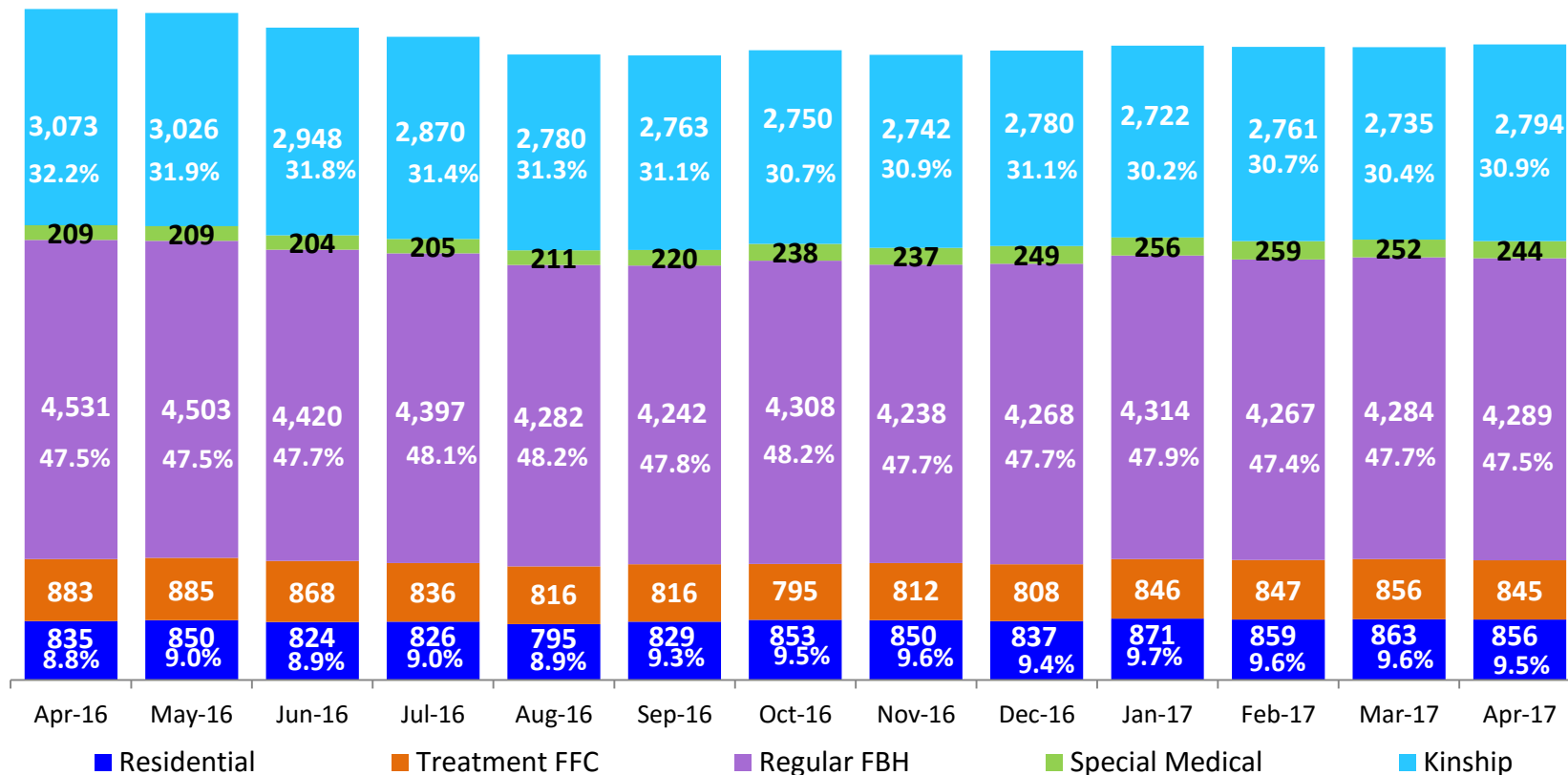


	CY 2013	CY 2014	CY 2015	CY 2016	Jan 2017	Feb 2017	Mar 2017	Apr 2017
Number of Placements	4,283	4,160	3,760	3,637	349	270	352	311

*Excludes CTH placements.

Children in Foster Care *

April 2016 – April 2017 (end of month)

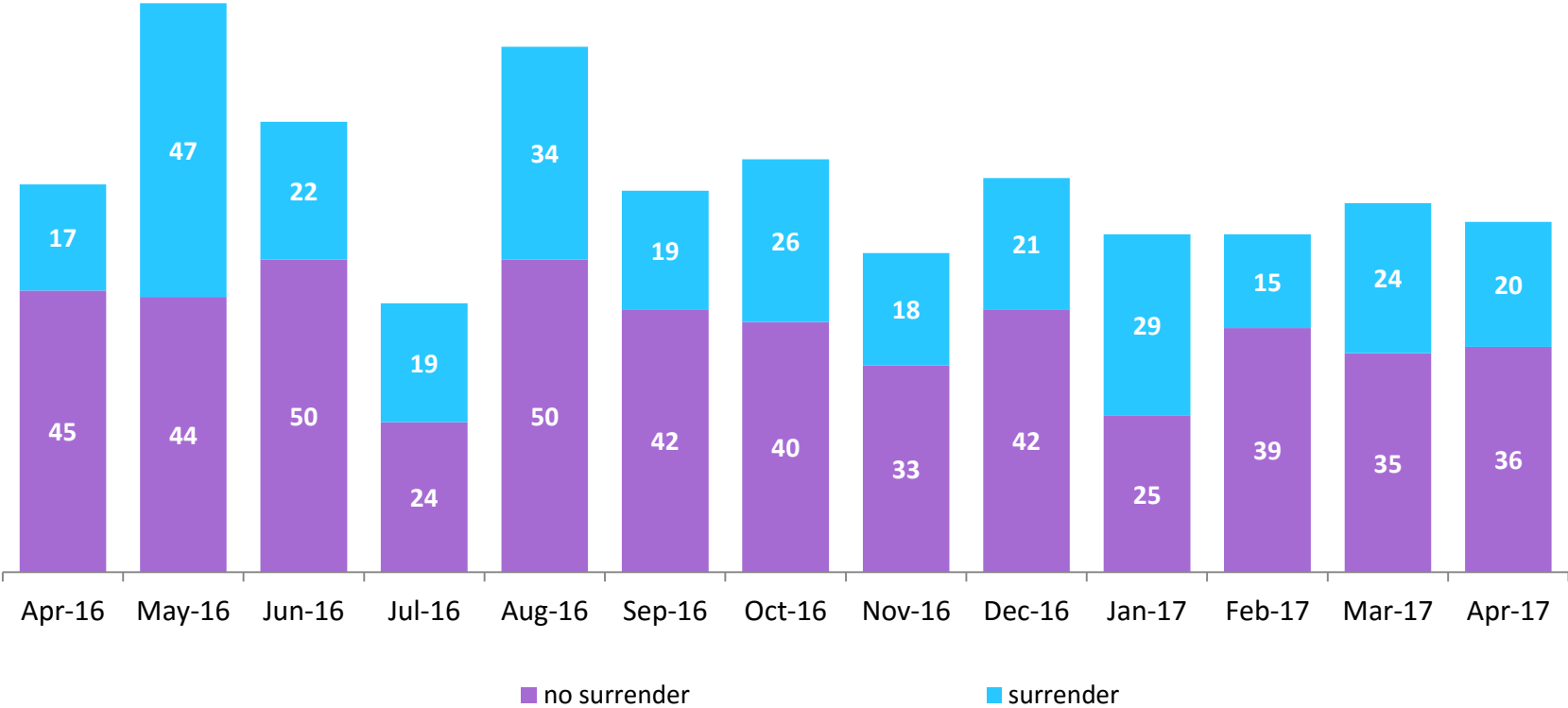


	Apr 2016	May 2016	Jun 2016	Jul 2016	Aug 2016	Sep 2016	Oct 2016	Nov 2016	Dec 2016	Jan 2017	Feb 2017	Mar 2017	Apr 2017
Number in Foster Care	9,531	9,473	9,264	9,134	8,884	8,870	8,944	8,879	8,942	9,009	8,993	8,990	9,028

*Excludes JD placements and includes children in 24 hour care and approximately 200 young children who are living in foster homes or residential care facilities with their mothers who are in foster care (8D children).

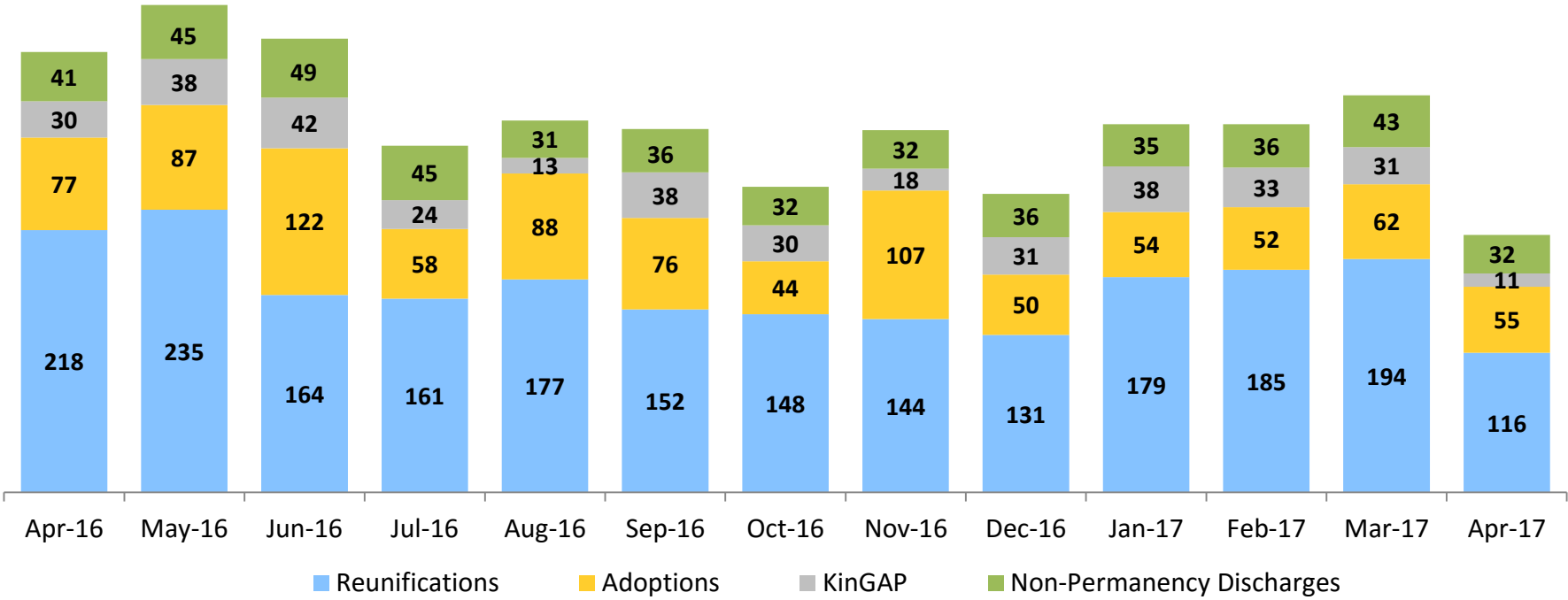
Children Freed for Adoption, Surrender by at Least One Parent

April 2016 – April 2017



	Apr 2016	May 2016	Jun 2016	Jul 2016	Aug 2016	Sep 2016	Oct 2016	Nov 2016	Dec 2016	Jan 2017	Feb 2017	Mar 2017	Apr 2017
Number Freed for Adoption	62	91	72	43	81	61	66	51	63	54	54	59	56

Permanency and Non-Permanency* Discharges from Foster Care** April 2016 – April 2017



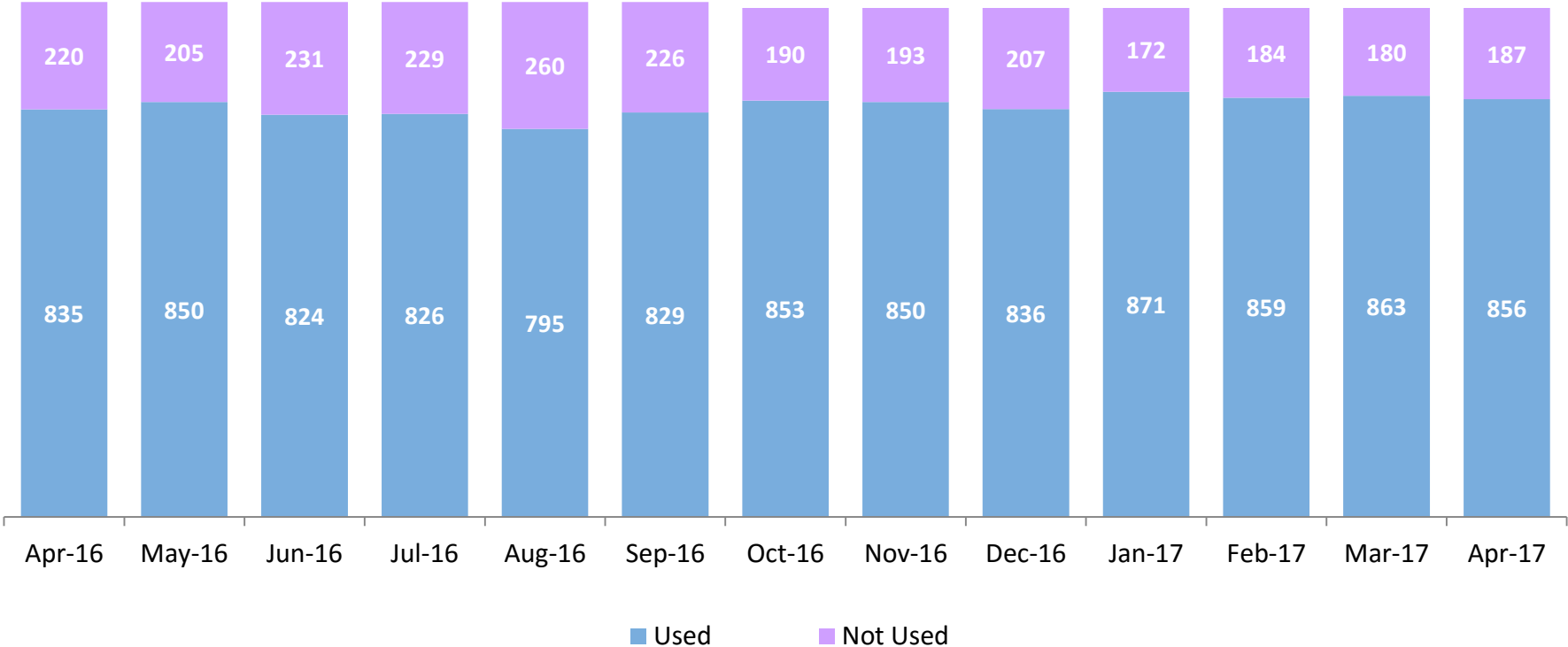
	Apr 2016	May 2016	Jun 2016	Jul 2016	Aug 2016	Sep 2016	Oct 2016	Nov 2016	Dec 2016	Jan 2017	Feb 2017	Mar 2017	Apr 2017
Number of Discharges	366	405	377	288	309	302	254	301	248	306	306	330	214

*Non-permanency discharges include AWOL, APPLA , other discharge destinations such as psychiatric institutions and correctional facilities and discharges with unspecified destinations.

**Excludes discharges of youth who entered care as a JD.

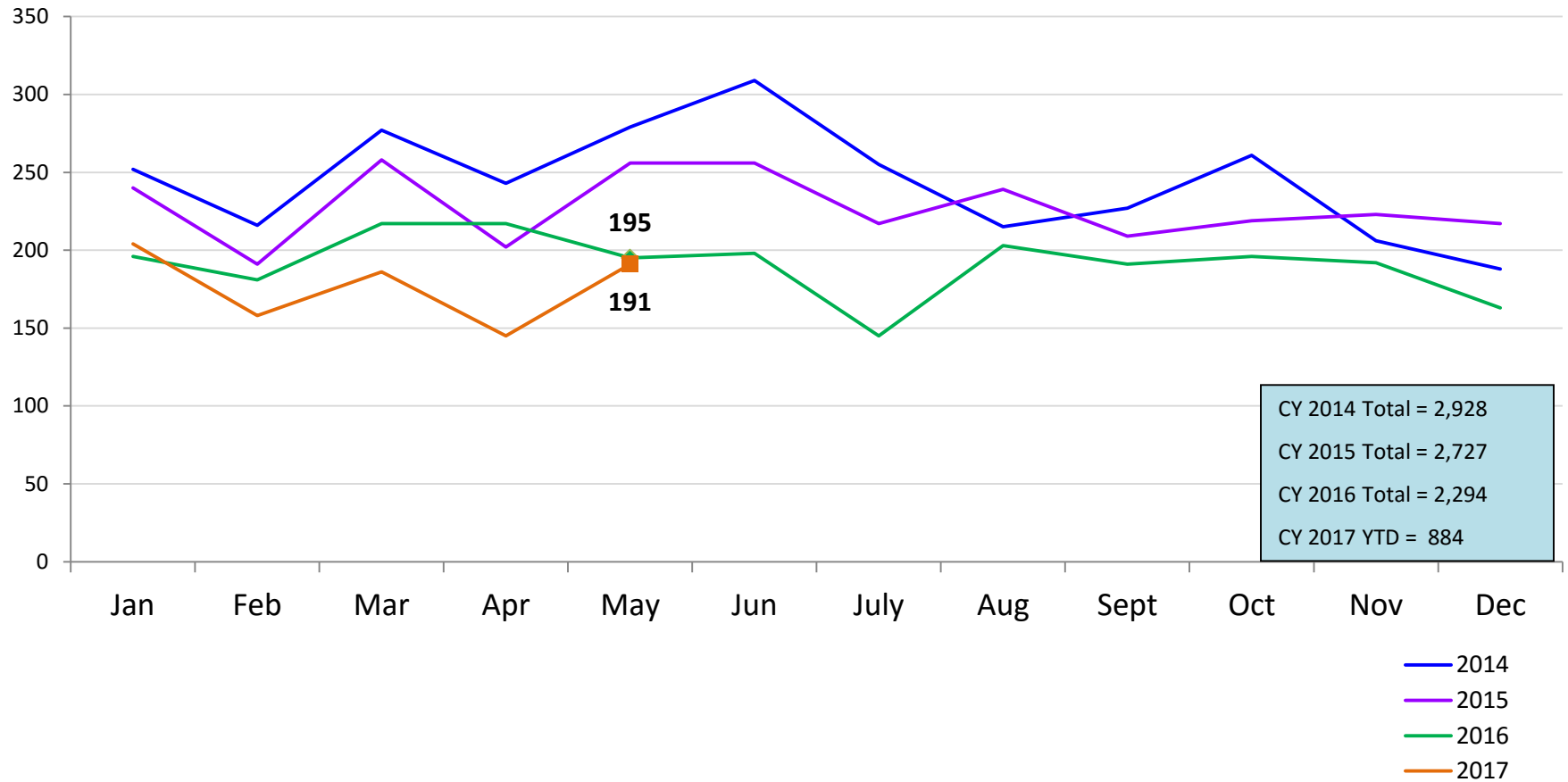
Residential Care Capacity and Utilization

April 2016 – April 2017



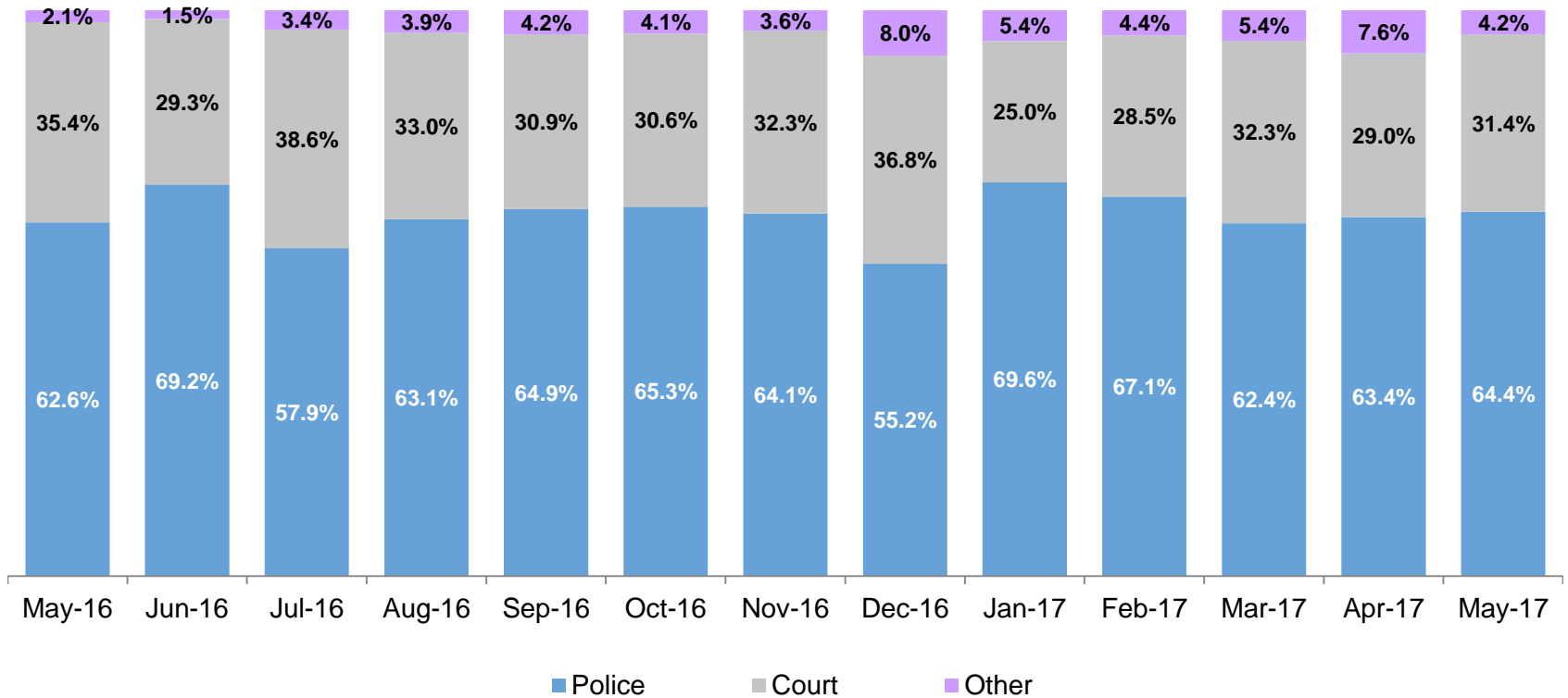
	Apr 2016	May 2016	Jun 2016	Jul 2016	Aug 2016	Sep 2016	Oct 2016	Nov 2016	Dec 2016	Jan 2017	Feb 2017	Mar 2017	Apr 2017
Capacity	1,055	1,055	1,055	1,055	1,055	1,055	1,043	1,043	1,043	1,043	1,043	1,043	1,043

Total Monthly Admissions to Detention January 2014 – May 2017 (Monthly Total)



Admit Authority, Detention Admissions

May 2016 – May 2017 (Monthly Total)

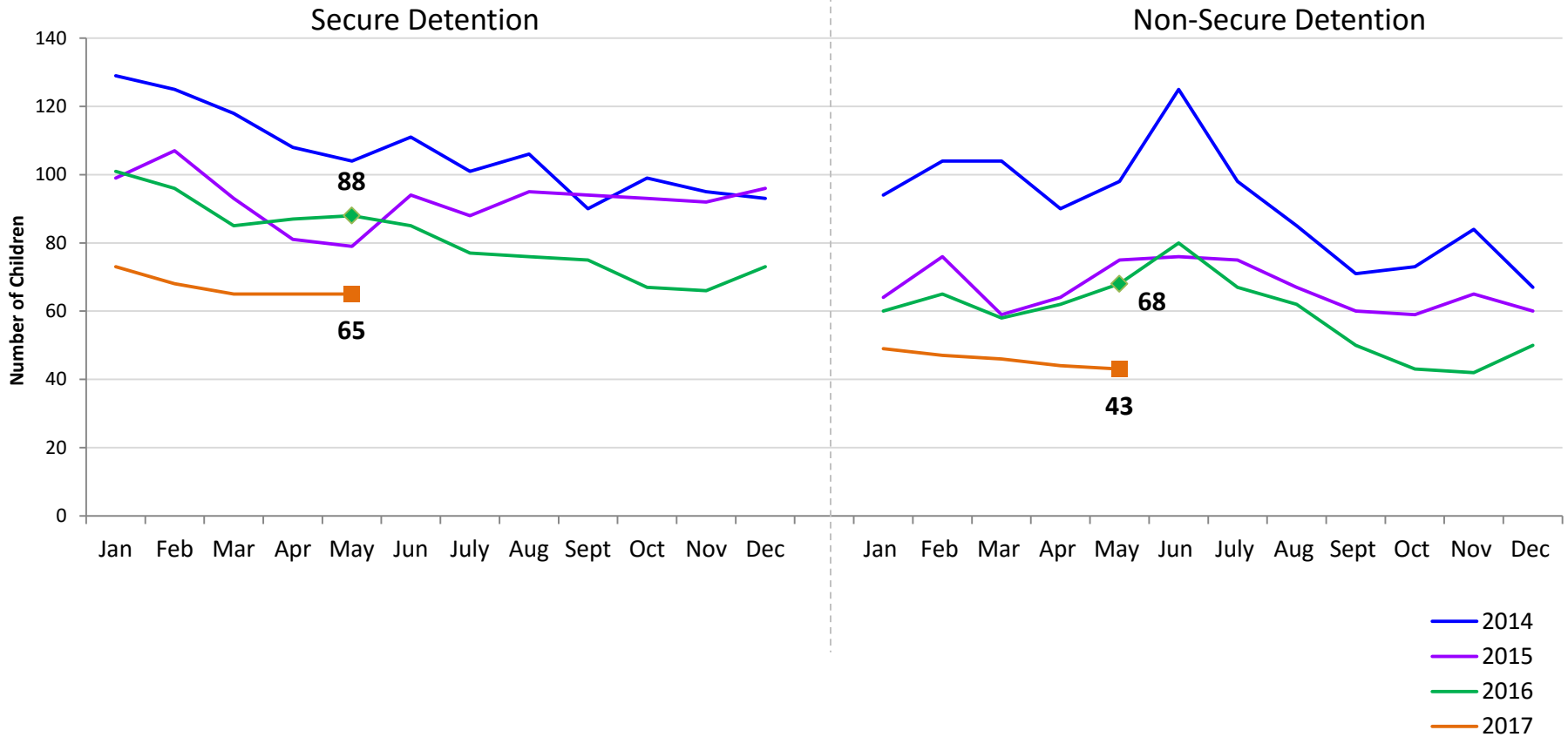


	May-16	Jun-16	Jul-16	Aug-16	Sep-16	Oct-16	Nov-16	Dec-16	Jan-17	Feb-17	Mar-17	Apr-17	May-17
Number of Admissions	195	198	145	203	191	196	192	163	204	158	186	145	191

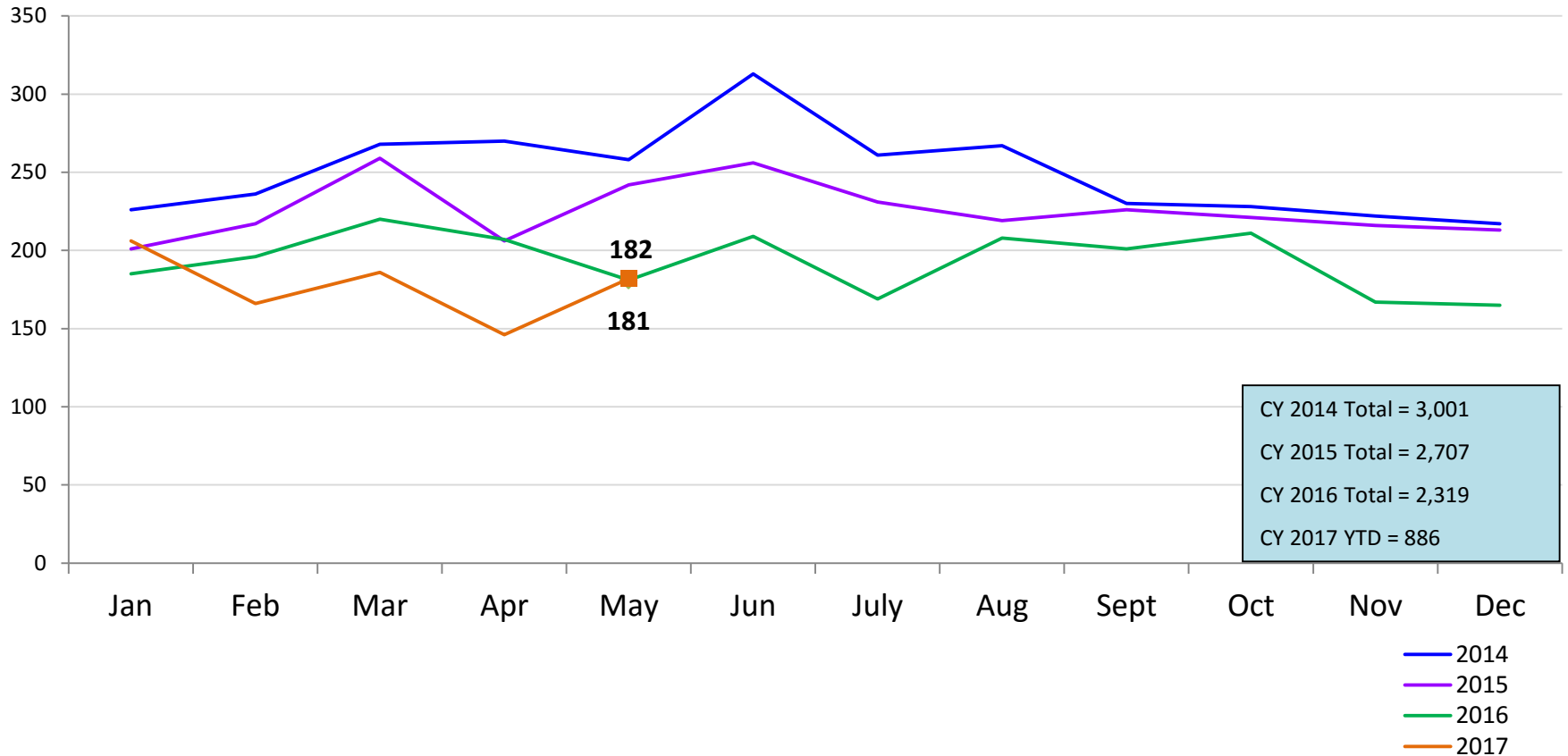
Note: Other Admit Authority includes the Sheriff Department, Department of Corrections and ACS.

Monthly Average Daily Population

January 2014 – May 2017

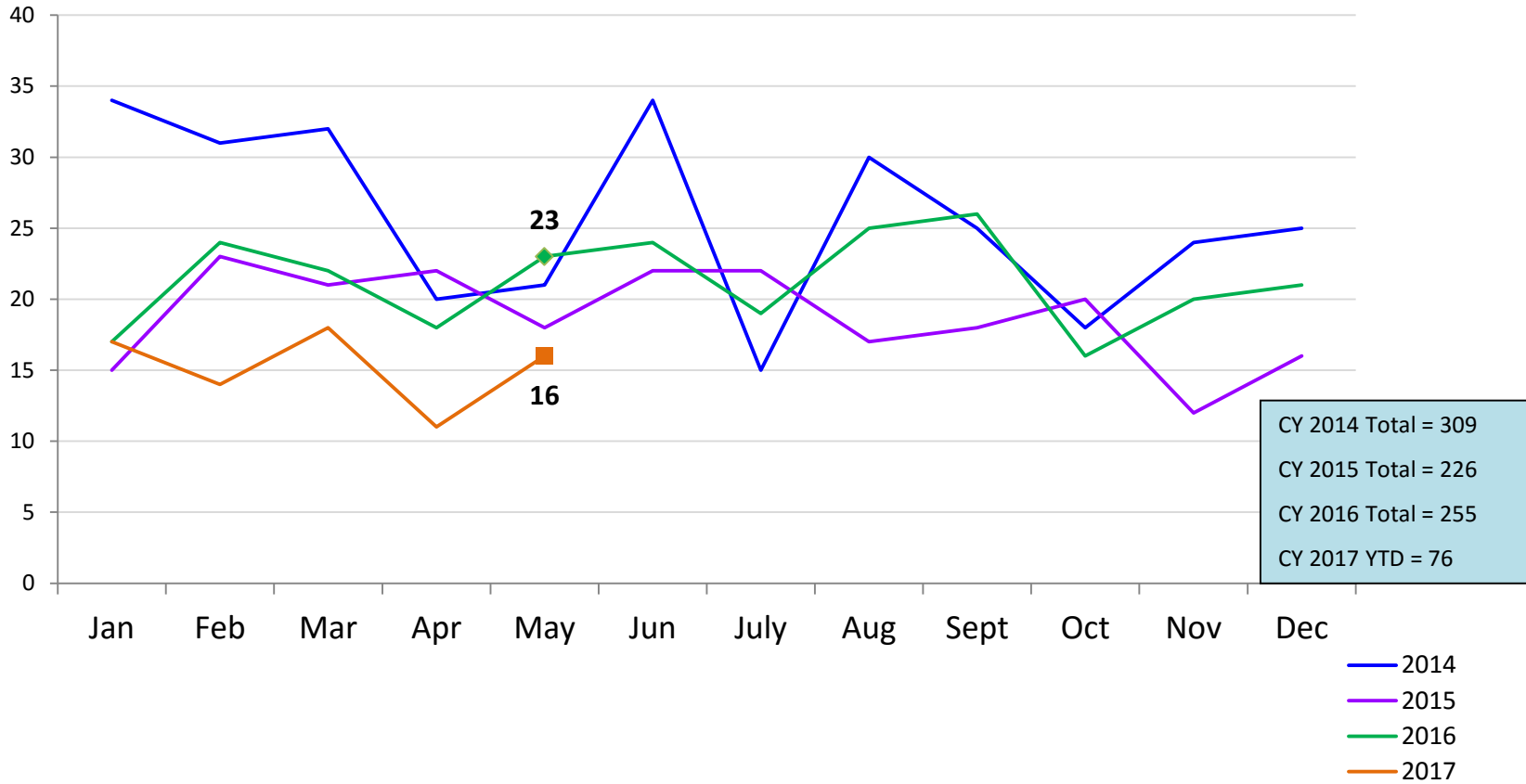


Total Monthly Releases from Detention January 2014 – May 2017 (Monthly Total)



Close to Home Intakes*

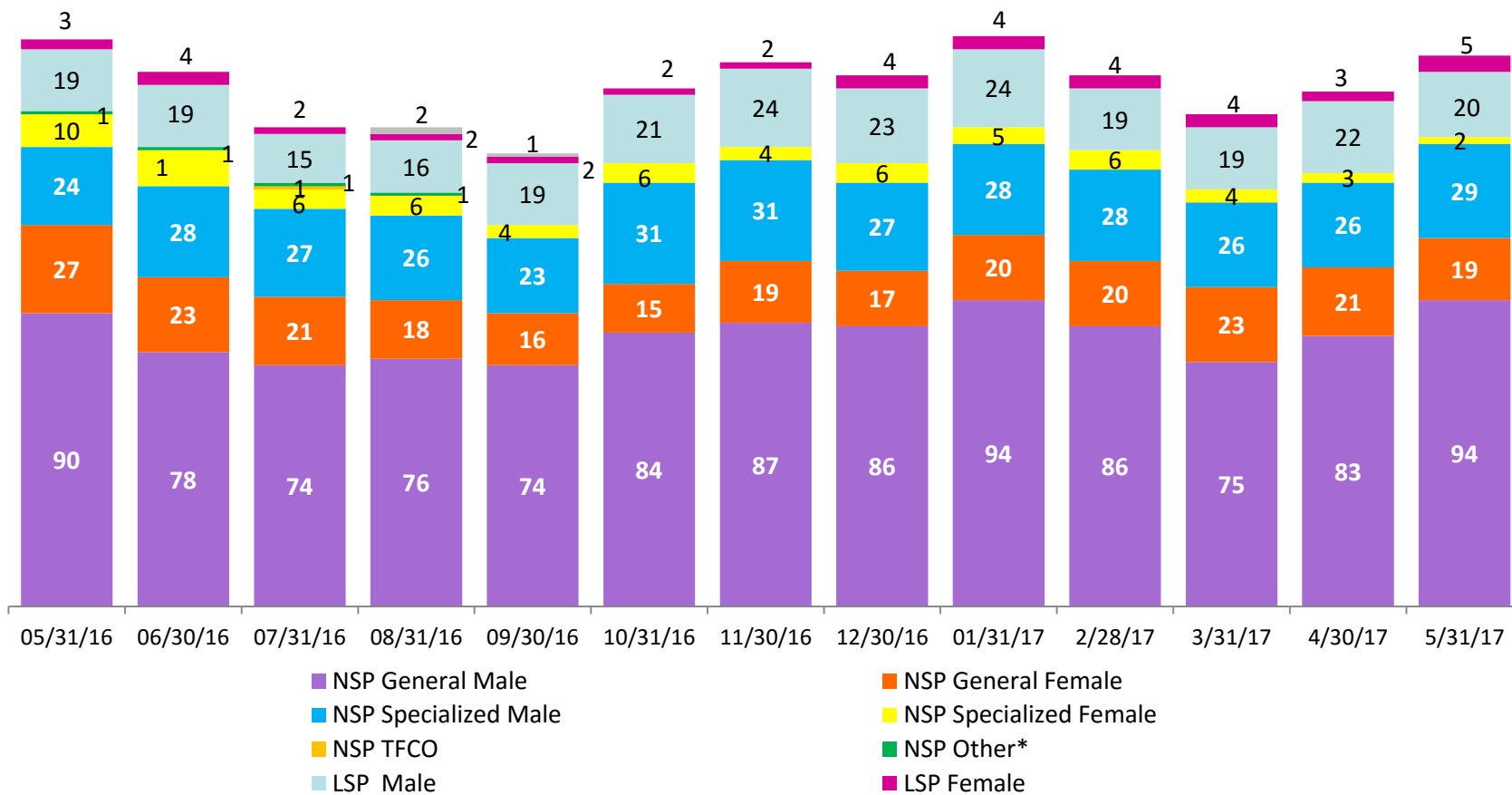
January 2014 – May 2017 (Monthly Total)



*Beginning in December 2015 Close to Home Intakes include LSP as well as NSP.

CTH Placement, in 24-hour Care

May 2016 – May 2017 (end of month)

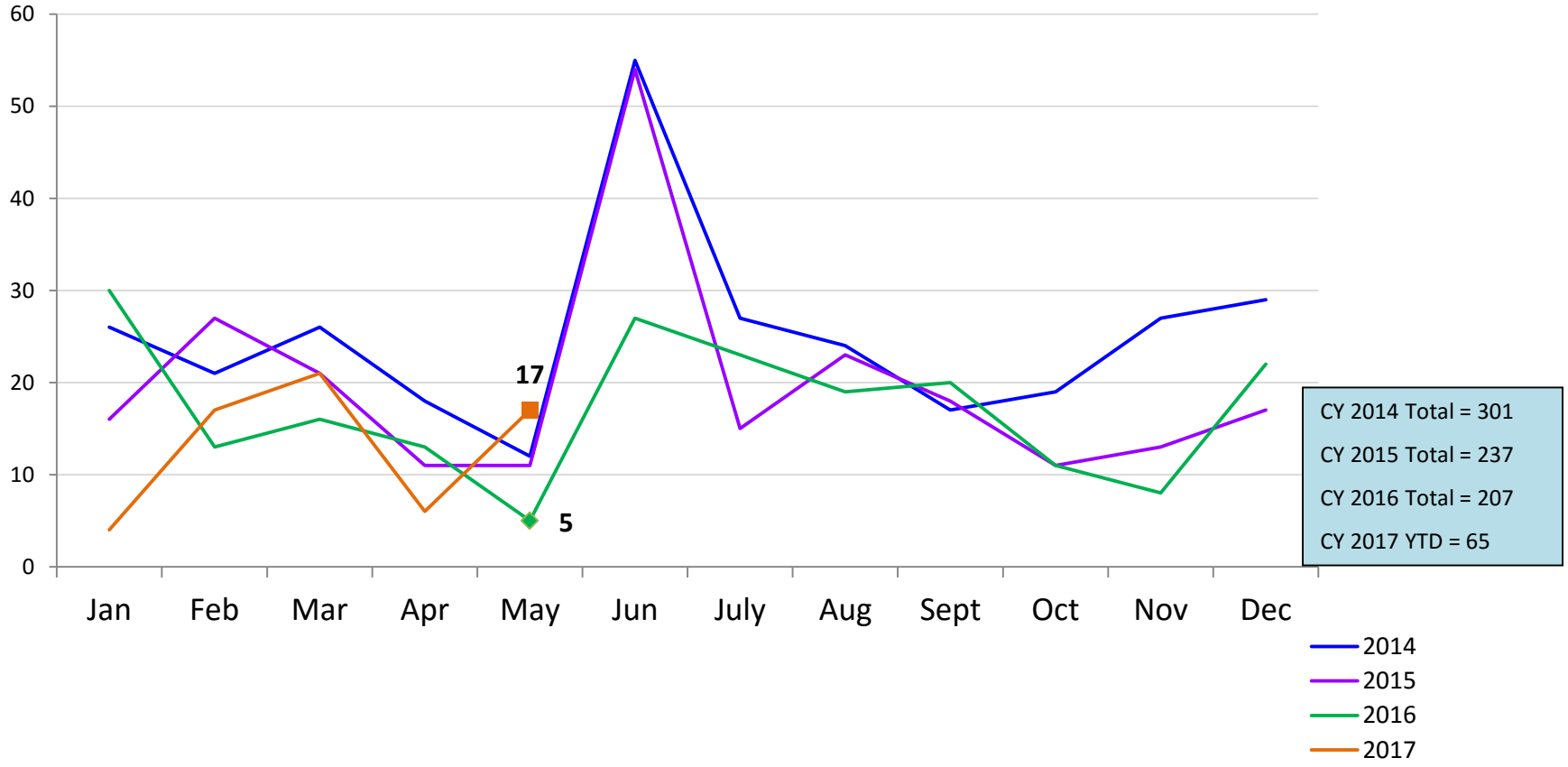


Number in Placement													
	5/31/16	6/30/16	7/31/16	8/31/16	9/30/16	10/31/16	11/30/16	12/30/16	1/31/17	2/28/17	3/31/17	4/30/17	5/31/17
NSP	152	141	130	127	117	136	141	136	147	140	128	133	144
LSP	22	23	17	20	22	23	26	27	28	23	23	25	25

*NSP Other includes youth in child welfare and mother/child placements.

Releases from Close to Home Placement to Aftercare

January 2014 – May 2017 (Monthly Total)



Appendix

Figure 1: SCR Intakes by Borough, MAR 16 - MAY 16 and MAR 17 - MAY 17

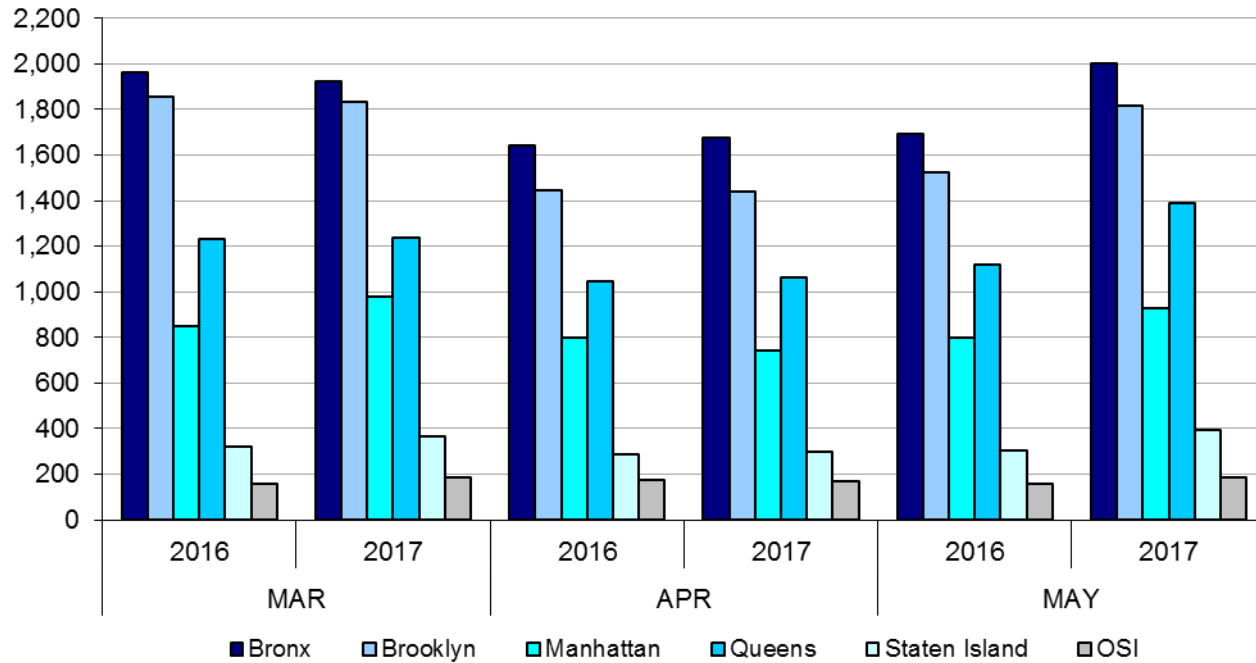


Table 1 - SCR Intake Changes by Borough, MAR 16 - MAY 16 and MAR 17 - MAY 17

Month	Year	Bronx	Brooklyn	Manhattan	Queens	Staten Island	OSI	Other	Total
MAR	2016	1,961	1,854	847	1,234	323	159	135	6,513
	2017	1,925	1,835	977	1,235	363	187	169	6,691
	% Change	-1.8%	-1.0%	15.3%	0.1%	12.4%	17.6%	25.2%	2.7%
APR	2016	1,645	1,448	796	1,044	286	174	159	5,552
	2017	1,676	1,442	741	1,062	296	170	151	5,538
	% Change	1.9%	-0.4%	-6.9%	1.7%	3.5%	-2.3%	-5.0%	-0.3%
MAY	2016	1,767	1,759	782	1,110	311	217	154	6,100
	2017	2,005	1,815	930	1,389	396	186	189	6,910
	% Change	13.5%	3.2%	18.9%	25.1%	27.3%	-14.3%	22.7%	13.3%
Total	2015/2016	5,373	5,061	2,425	3,388	920	550	448	18,165
	2016/2017	5,606	5,092	2,648	3,686	1,055	543	509	19,139
	% Change	4.3%	0.6%	9.2%	8.8%	14.7%	-1.3%	13.6%	5.4%

Figure 2: Citywide SCR Intakes by Reporter Group, MAR 16 - MAY 16 and MAR 17 - MAY 17

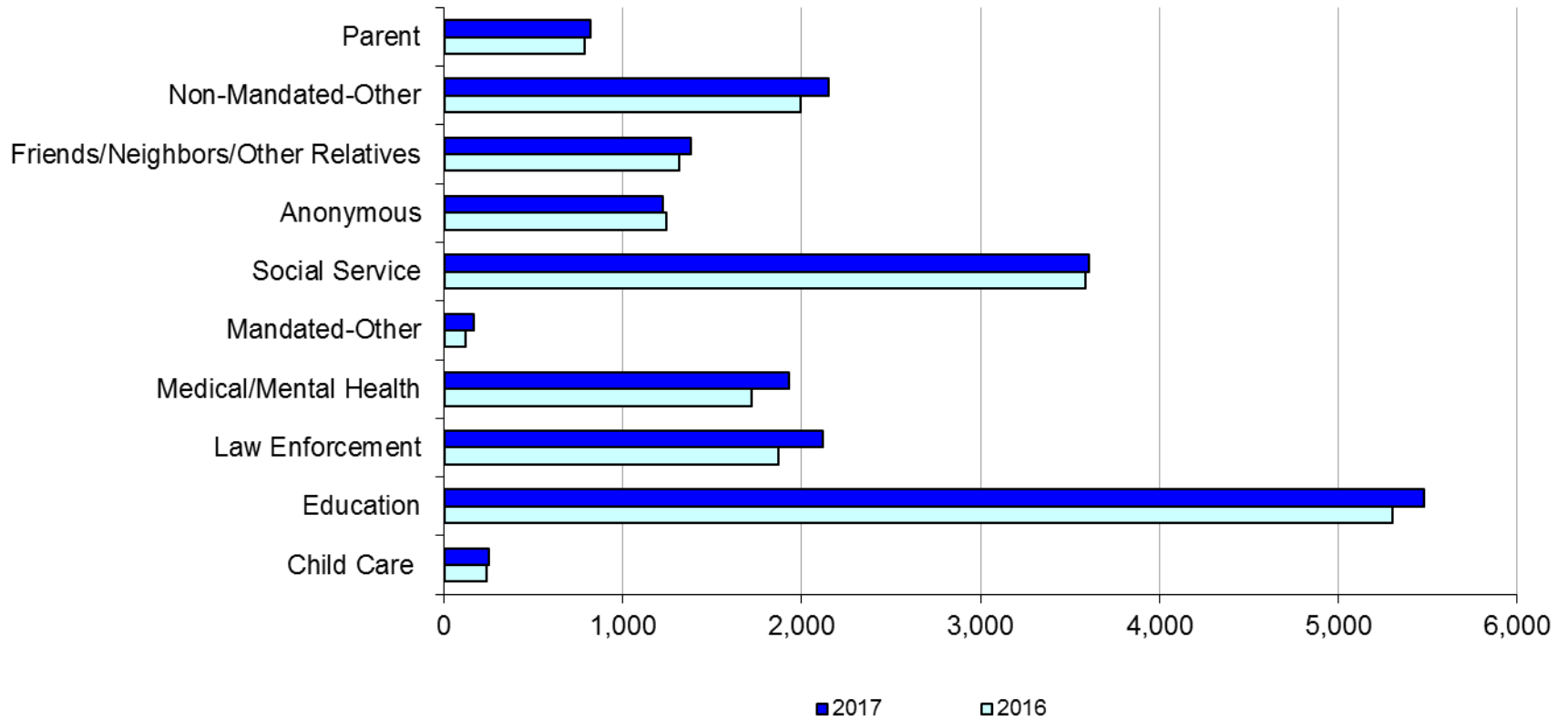
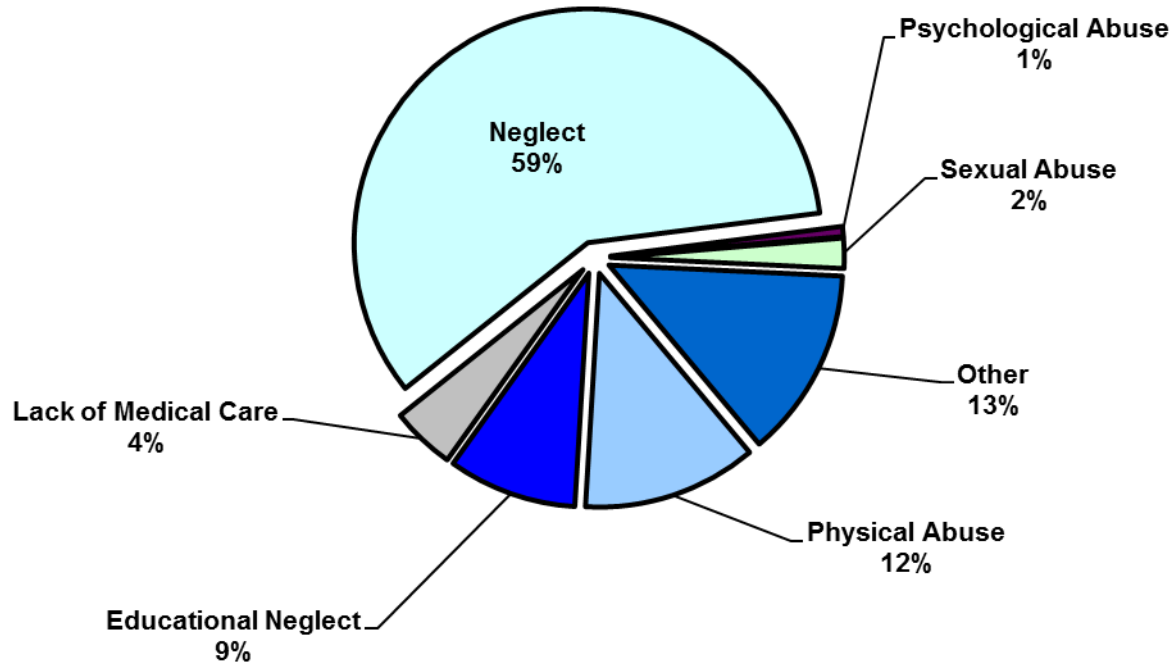


Table 2 - SCR Intakes by Reporter Group, MAR 16 - MAY 16 and MAR 17 - MAY 17

Year	Child Care/ Substitute Care Personnel	Educational Personnel	Law Enforcement	Medical/ Mental Health Personnel	Mandated- Other	Social Service Personnel	Anonymous	Friends/ Neighbors/ Other Relatives	Non- Mandated- Other	Parent	Foster Parent	Total
Bronx												
2016	73	1,672	446	493	28	1,116	320	388	632	211	0	5,379
2017	67	1,721	561	517	45	1,058	357	443	648	191	1	5,609
% Change	-8.2%	2.9%	25.8%	4.9%	60.7%	-5.2%	11.6%	14.2%	2.5%	-9.5%	--	4.3%
Brooklyn												
2016	60	1,523	606	472	34	946	357	368	519	177	1	5,063
2017	62	1,479	616	473	48	944	325	358	583	204	1	5,093
% Change	3.3%	-2.9%	1.7%	0.2%	41.2%	-0.2%	-9.0%	-2.7%	12.3%	15.3%	0.0%	0.6%
Manhattan												
2016	27	584	313	265	26	456	196	180	280	96	2	2,425
2017	38	611	327	296	25	539	207	206	303	96	0	2,648
% Change	40.7%	4.6%	4.5%	11.7%	-3.8%	18.2%	5.6%	14.4%	8.2%	0.0%	-100.0%	9.2%
Queens												
2016	28	1,115	312	295	17	685	231	243	323	138	1	3,388
2017	37	1,250	366	388	20	676	191	228	383	148	0	3,687
% Change	32.1%	12.1%	17.3%	31.5%	17.6%	-1.3%	-17.3%	-6.2%	18.6%	7.2%	-100.0%	8.8%
Staten Island												
2016	9	322	80	85	5	126	85	83	86	39	0	920
2017	10	321	103	130	9	144	94	90	103	51	0	1,055
% Change	11.1%	-0.3%	28.8%	52.9%	80.0%	14.3%	10.6%	8.4%	19.8%	30.8%	--	14.7%
OSI												
2016	39	48	26	49	7	120	33	32	105	87	2	548
2017	35	65	41	58	13	91	27	27	90	93	4	544
% Change	-10.3%	35.4%	57.7%	18.4%	85.7%	-24.2%	-18.2%	-15.6%	-14.3%	6.9%	100.0%	-0.7%
Other												
2016	5	41	84	61	2	137	22	23	50	41	0	466
2017	4	35	107	64	6	152	21	31	41	33	0	494
% Change	-20.0%	-14.6%	27.4%	4.9%	200.0%	10.9%	-4.5%	34.8%	-18.0%	-19.5%	--	6.0%
Citywide												
2016	241	5,305	1,867	1,720	119	3,586	1,244	1,317	1,995	789	6	18,189
2017	253	5,482	2,121	1,926	166	3,604	1,222	1,383	2,151	816	6	19,130
% Change	5.0%	3.3%	13.6%	12.0%	39.5%	0.5%	-1.8%	5.0%	7.8%	3.4%	0.0%	5.2%

Figure 3: SCR Allegations, MAR 17 – MAY 17



Total Allegations = 47,547

Allegations are grouped as follows: Physical Abuse - burn, fatality, fracture, choking, twisting, shaking, excessive corporal punishment, internal injuries, lacerations, bruises, welts, poisoning, noxious substances; Educational Neglect – educational neglect; Lack of Medical Care – lack of medical care; Neglect - inadequate guardianship, inadequate food, clothing, shelter, lack of supervision, malnutrition, failure to thrive, swelling, dislocations, sprains; Psychological Abuse - isolation, emotional neglect; Sexual Abuse – sexual abuse; and Other -parental drug use, child drug use, abandonment, inappropriate custodial conduct.

Table 3 - SCR Allegations, MAR 16 - MAY 16 and MAR 17 – MAY 17

Year	Physical Abuse	Educational Neglect	Lack of Medical Care	Neglect	Psychological Abuse	Sexual Abuse	Other	Total
Bronx								
2016	1,691	1,537	608	8,051	65	251	1,695	13,898
2017	1,615	1,578	661	8,586	82	277	1,953	14,752
% Change	-4.5%	2.7%	8.7%	6.6%	26.2%	10.4%	15.2%	6.1%
Brooklyn								
2016	1,691	1,301	549	7,587	92	253	1,601	13,074
2017	1,542	1,216	560	7,362	86	270	1,485	12,521
% Change	-8.8%	-6.5%	2.0%	-3.0%	-6.5%	6.7%	-7.2%	-4.2%
Manhattan								
2016	594	478	209	2807	24	105	651	4,868
2017	637	477	266	3187	37	83	725	5,412
% Change	7.2%	-0.2%	27.3%	13.5%	54.2%	-21.0%	11.4%	11.2%
Queens								
2016	1,145	557	342	4,630	52	173	1,052	7,951
2017	1,194	665	384	5,137	80	181	1,162	8,803
% Change	4.3%	19.4%	12.3%	11.0%	53.8%	4.6%	10.5%	10.7%
Staten Island								
2016	251	198	92	1,438	9	29	414	2,431
2017	314	200	105	1,635	27	58	436	2,775
% Change	25.1%	1.0%	14.1%	13.7%	200.0%	100.0%	5.3%	14.2%
OSI								
2016	353	48	66	1,397	7	63	220	2,154
2017	295	60	73	1,355	5	81	201	2,070
% Change	-16.4%	25.0%	10.6%	-3.0%	-28.6%	28.6%	-8.6%	-3.9%
Other								
2016	122	43	48	691	4	36	252	1,196
2017	139	42	49	645	17	38	284	1,214
% Change	13.9%	-2.3%	2.1%	-6.7%	325.0%	5.6%	12.7%	1.5%
Citywide								
2016	5,847	4,162	1,914	26,601	253	910	5,885	45,572
2017	5,736	4,238	2,098	27,907	334	988	6,246	47,547
% Change	-1.9%	1.8%	9.6%	4.9%	32.0%	8.6%	6.1%	4.3%

**TABLE 4 - Child Welfare Preventive Cases
New and Closed
January 2014 to May 2017**

Month	New Cases	Closed Cases
2014		
Jan-14	841	761
Feb-14	885	785
Mar-14	998	1,009
Apr-14	919	1,059
May-14	919	1,056
Jun-14	890	899
Jul-14	973	1,236
Aug-14	826	1,189
Sep-14	841	878
Oct-14	835	1,035
Nov-14	677	887
Dec-14	1,062	927
2015		
Jan-15	728	882
Feb-15	902	836
Mar-15	1,122	932
Apr-15	977	1,023
May-15	914	1,084
Jun-15	1,068	997
Jul-15	899	1,298
Aug-15	893	1,128
Sep-15	764	1,040
Oct-15	749	986
Nov-15	746	881
Dec-15	1,013	982
2016		
Jan-16	792	851
Feb-16	897	872
Mar-16	1,029	1,065
Apr-16	836	978
May-16	890	1,049
Jun-16	996	1,015
Jul-16	842	1,126
Aug-16	897	1,087
Sep-16	821	908
Oct-16	776	696
Nov-16	728	558
Dec-16	816	531
2017		
Jan-17	548	474
Feb-17	602	904
Mar-17	864	1,105
Apr-17	645	844
May-17	781	980

**Table 5 - Referrals to Child Welfare Preventive Services by Source
January 2014 to May 2017**

Month	Total Referrals	Division of Child Protection	Foster Care Agencies	PPRS Transfer	School	Self	Other Sources*
2014							
Jan-14	1,537	70.0%	1.2%	6.6%	2.3%	5.8%	14.2%
Feb-14	1,334	69.7%	0.8%	8.4%	1.7%	5.5%	13.9%
Mar-14	1,612	70.0%	1.4%	8.6%	1.6%	5.3%	13.1%
Apr-14	1,525	70.2%	0.9%	7.6%	2.1%	3.7%	15.4%
May-14	1,580	74.4%	0.7%	8.3%	1.4%	5.2%	10.0%
Jun-14	1,550	78.6%	1.2%	6.3%	1.2%	3.2%	9.4%
Jul-14	1,659	79.6%	1.5%	6.7%	0.4%	4.2%	7.6%
Aug-14	1,395	72.2%	1.6%	10.8%	0.3%	4.9%	10.3%
Sep-14	1,597	49.4%	1.5%	7.6%	0.3%	4.5%	36.8%
Oct-14	1,634	68.2%	1.9%	10.0%	1.2%	4.6%	14.1%
Nov-14	1,311	66.4%	0.9%	14.3%	2.4%	3.9%	12.1%
Dec-14	1,785	71.1%	1.4%	8.8%	2.9%	4.8%	11.0%
CY 2014	18,519	70.1%	1.3%	8.6%	1.5%	4.6%	14.0%
2015							
Jan-15	1,430	74.4%	1.6%	8.7%	1.8%	3.8%	9.7%
Feb-15	1,538	76.5%	0.8%	8.1%	1.8%	4.7%	8.2%
Mar-15	1,798	74.6%	0.9%	7.3%	1.6%	4.8%	10.8%
Apr-15	1,719	78.2%	1.3%	7.2%	0.6%	3.5%	9.1%
May-15	1,561	77.2%	1.0%	5.1%	1.5%	4.5%	10.8%
Jun-15	1,716	77.4%	1.1%	7.7%	1.2%	3.5%	9.1%
Jul-15	1,511	79.6%	0.9%	7.2%	0.3%	3.8%	8.2%
Aug-15	1,418	79.3%	2.2%	7.8%	0.2%	3.1%	7.5%
Sep-15	1,209	72.1%	2.8%	10.4%	0.5%	5.5%	8.6%
Oct-15	1,338	70.4%	1.9%	8.3%	2.1%	5.8%	11.6%
Nov-15	1,220	68.2%	1.8%	9.6%	1.4%	6.2%	12.8%
Dec-15	1,526	73.5%	1.6%	8.0%	2.0%	5.0%	9.9%
2016							
Jan-16	1,370	73.6%	1.6%	8.2%	0.7%	5.4%	10.6%
Feb-16	1,436	75.8%	2.2%	7.8%	1.0%	3.8%	9.3%
Mar-16	1,557	72.0%	2.1%	8.8%	1.0%	4.6%	11.4%
Apr-16	1,378	76.1%	1.5%	7.4%	1.5%	3.5%	10.0%
May-16	1,386	73.4%	1.4%	8.7%	1.0%	4.7%	10.8%
Jun-16	1,564	77.2%	2.4%	6.2%	1.5%	4.1%	8.6%
Jul-16	1,338	80.3%	1.7%	6.4%	1.0%	4.2%	6.4%
Aug-16	1,385	79.1%	1.8%	7.1%	0.4%	4.0%	7.6%
Sep-16	1,297	77.8%	2.1%	7.5%	0.8%	4.5%	7.4%
Oct-16	1,247	70.1%	2.0%	7.6%	1.5%	5.9%	12.9%
Nov-16	1,229	67.8%	2.0%	7.8%	1.2%	5.5%	15.8%
Dec-16	1,175	76.0%	1.5%	7.1%	1.3%	3.8%	10.3%
2017							
Jan-17	1,046	78.5%	1.4%	6.7%	0.7%	3.1%	9.7%
Feb-17	1,067	77.7%	0.8%	6.7%	0.8%	3.8%	10.1%
Mar-17	1,383	79.1%	0.6%	6.9%	0.9%	4.0%	8.5%
Apr-17	1,117	81.2%	1.0%	5.9%	1.1%	1.4%	9.4%
May-17	1,321	83.0%	0.9%	5.6%	0.9%	2.6%	7.0%

*Other Community Sources includes the Department of Homeless Services, Family Court, FAP, Hospitals and Medical facilities, the NYC Housing Authority, Probation, and Sponsor Agencies.