

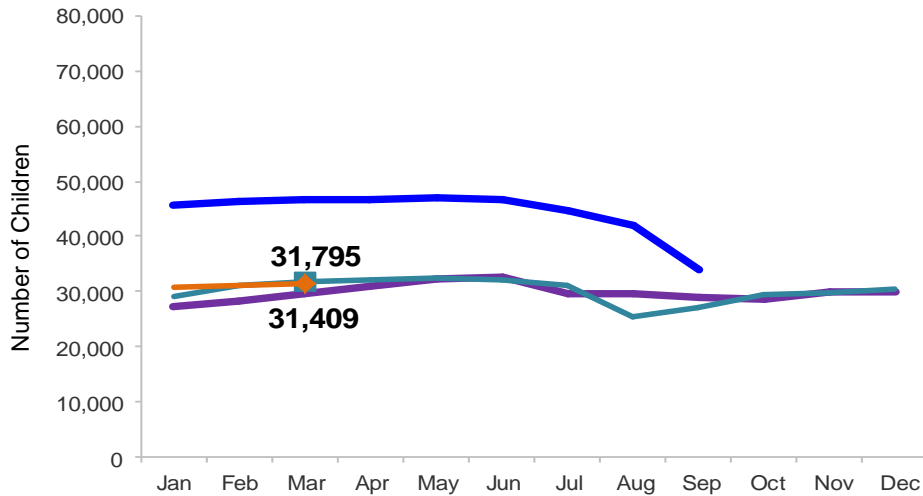


# Flash

April 2015

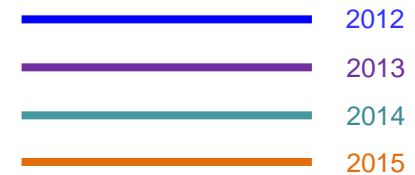
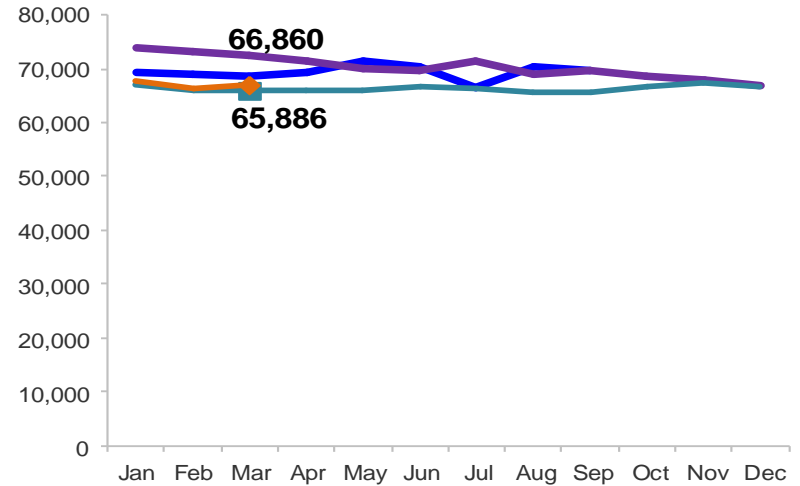
## Children Enrolled in Contracted EarlyLearn Programs

January 2012 – March 2015 (End of Month)



## Children Using Vouchers for Child Care

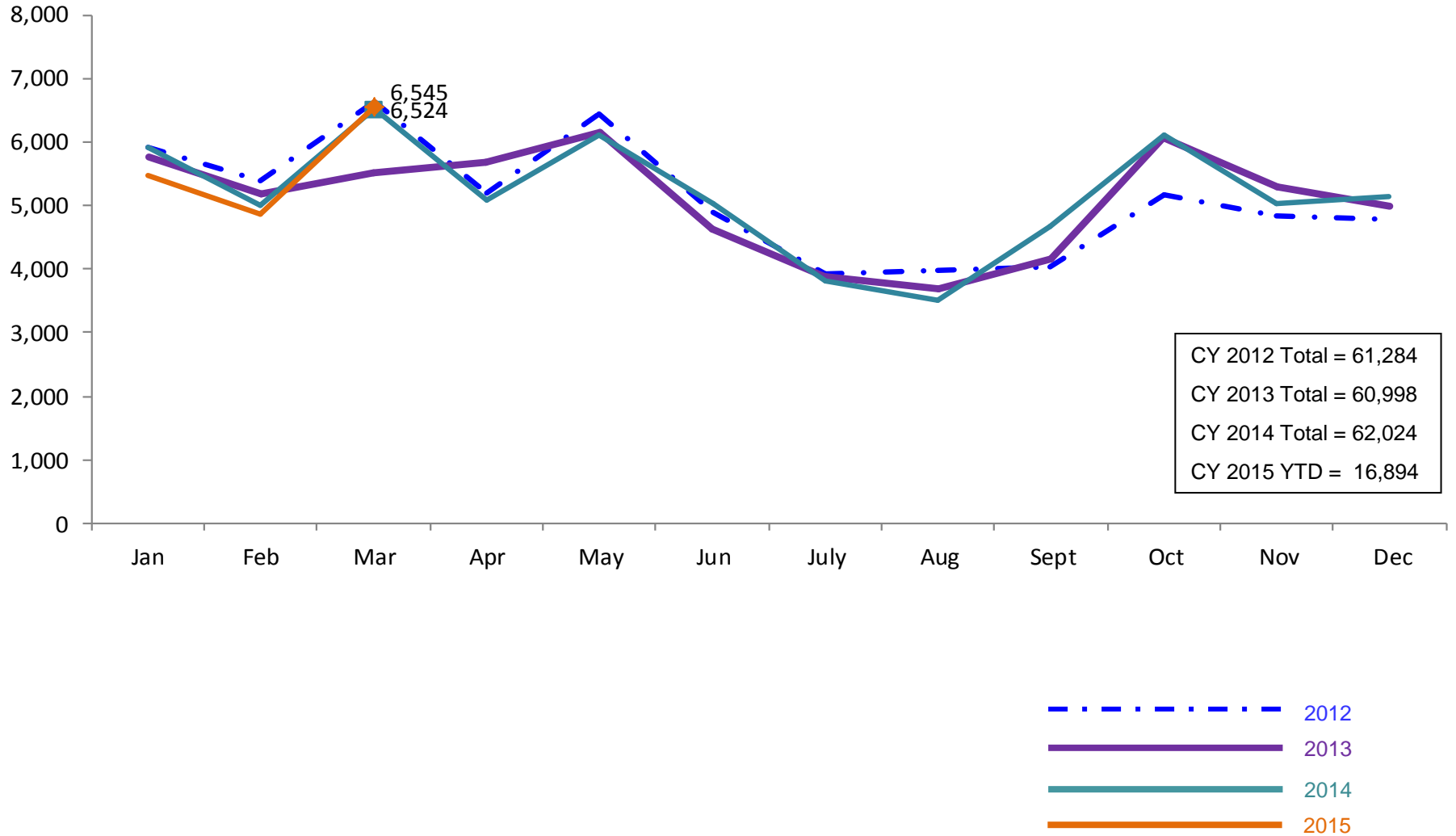
January 2012 – March 2015 (End of Month)



Note: Beginning October 1, 2012 ACS converted its early care and education system to a new model, EarlyLearn NYC. Enrollment data for the transitional months of October – December 2012 are not available because contractors were in the midst of implementing the data collection systems.

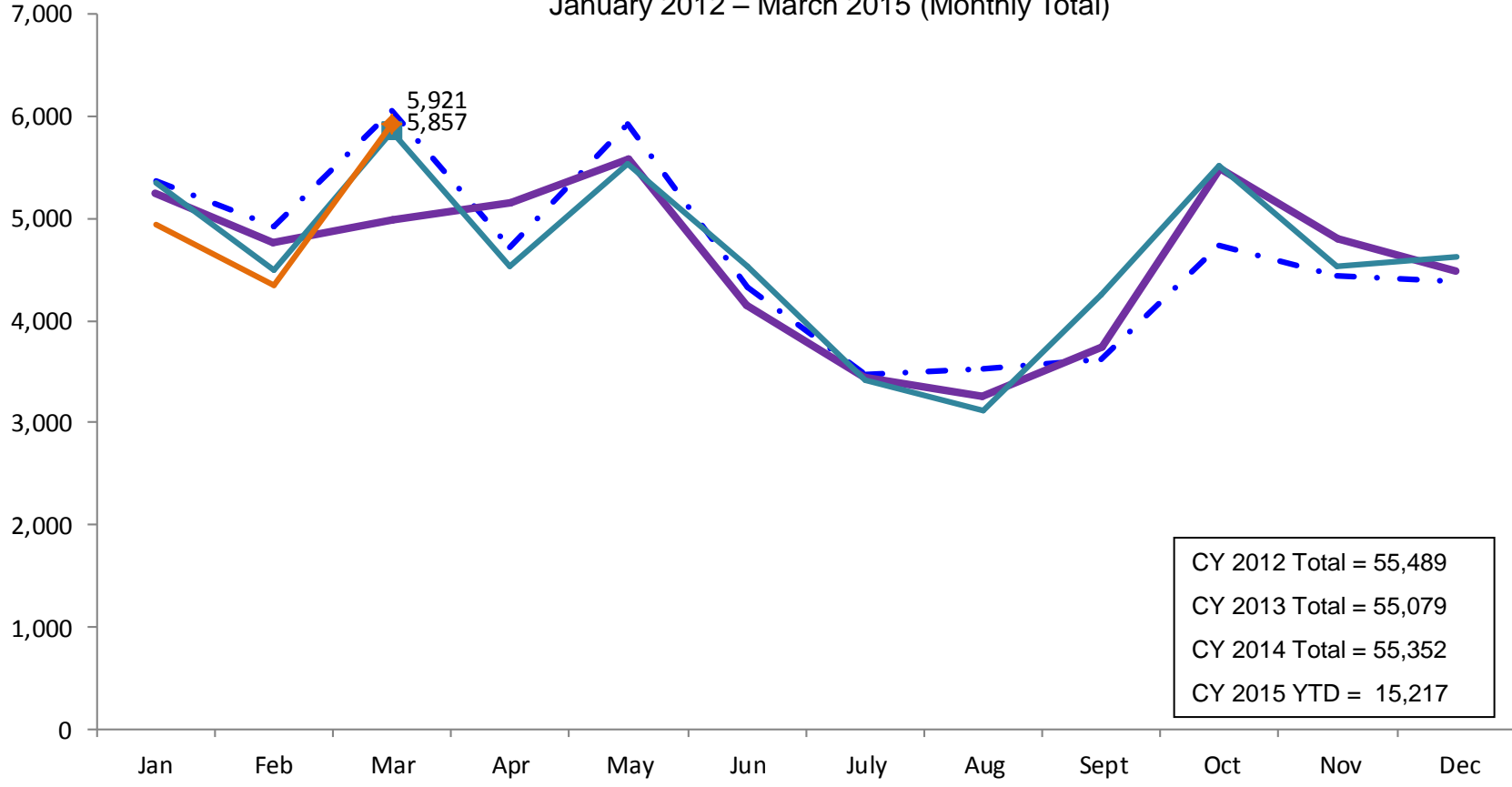
### SCR Intakes

January 2012 – March 2015 (Monthly Total)

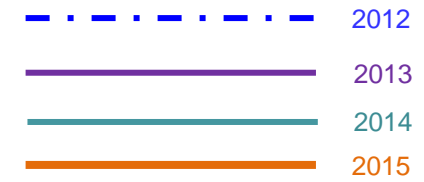


### SCR Consolidated Investigations

January 2012 – March 2015 (Monthly Total)

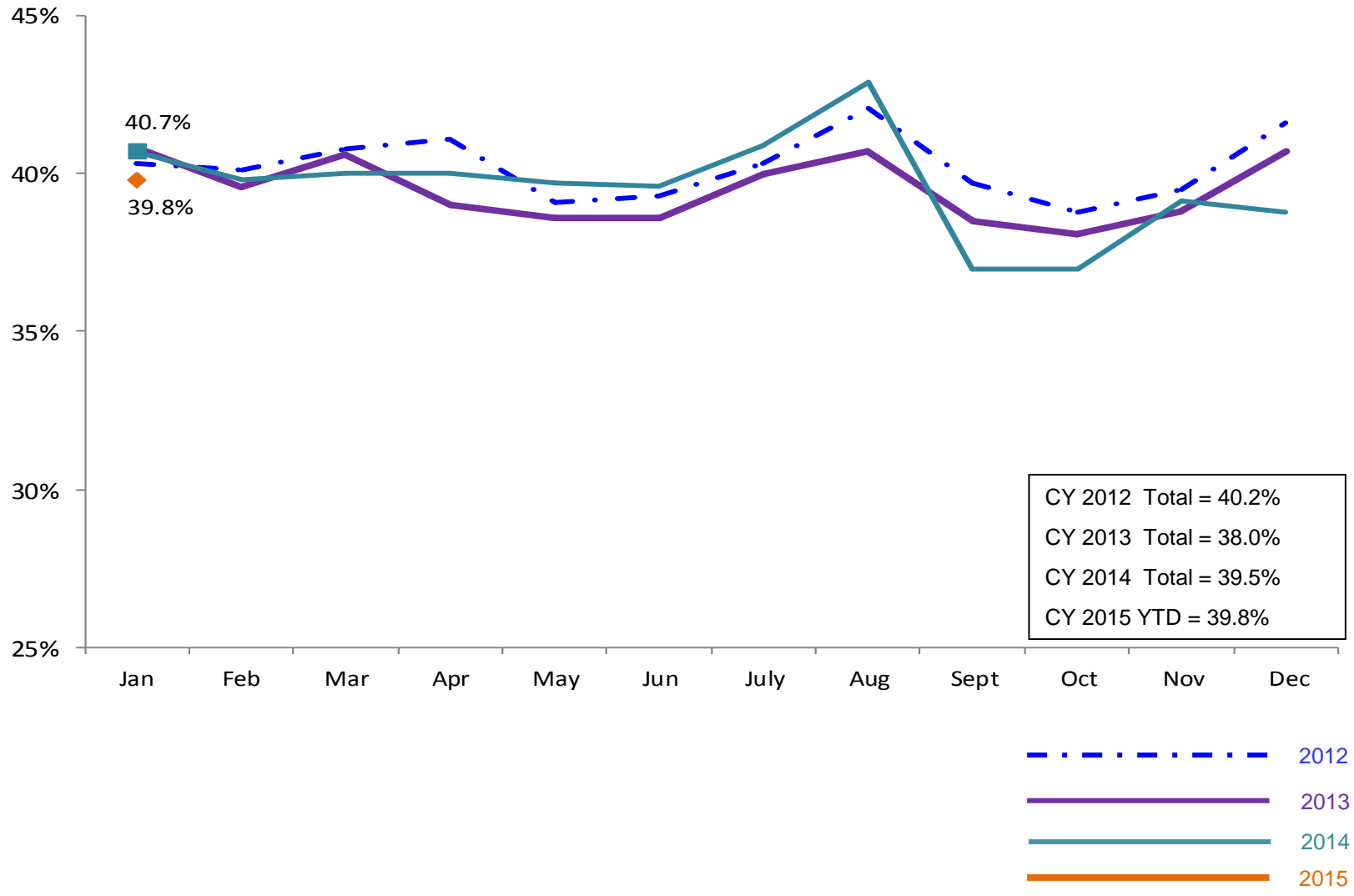


CY 2012 Total = 55,489  
CY 2013 Total = 55,079  
CY 2014 Total = 55,352  
CY 2015 YTD = 15,217



### SCR Investigation Indication Rate

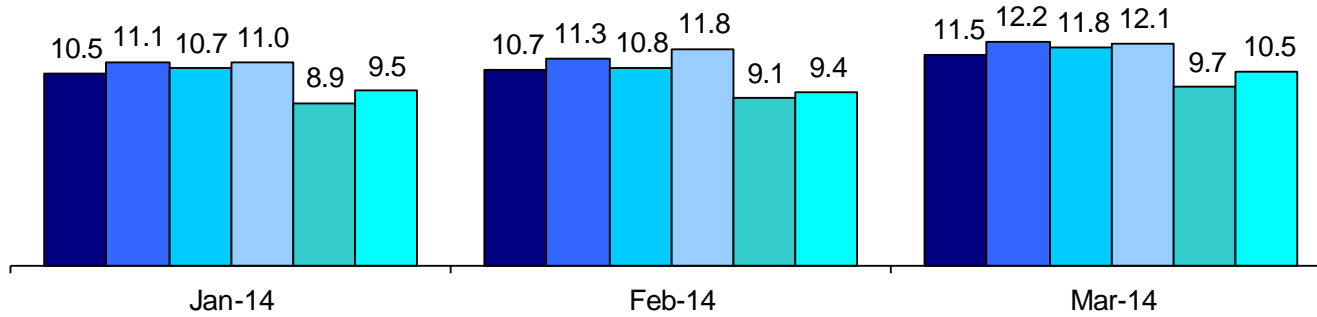
January 2012 – January 2015



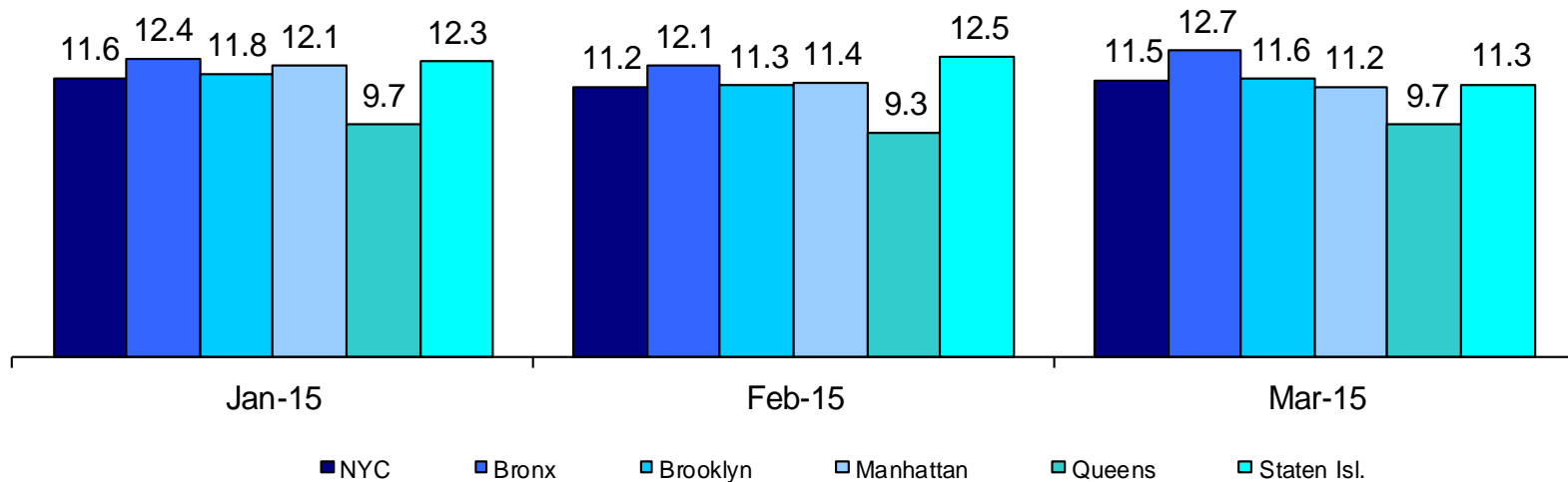
**Average P/D Combined Caseload\***

January 2014 – March 2014 & January 2015 – March 2015

2014



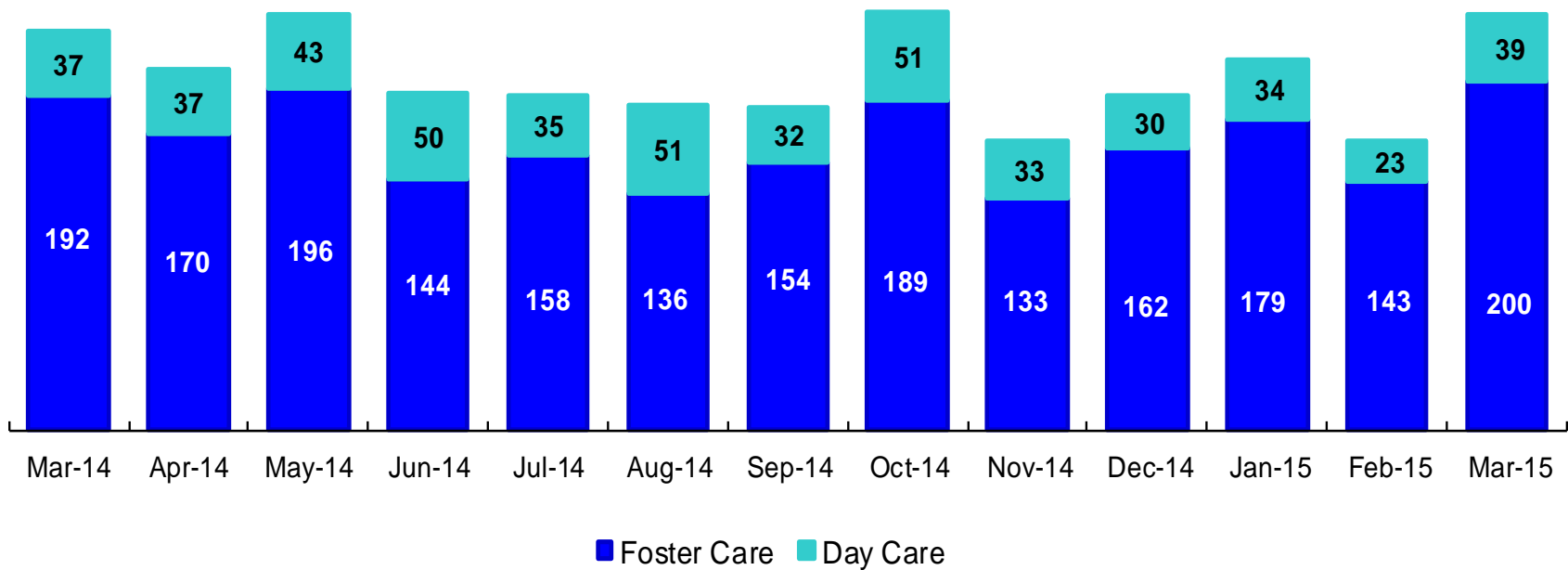
2015



\* Caseloads are of protective/diagnostic caseworkers only and exclude the caseloads carried by Level I and Level II Supervisors.

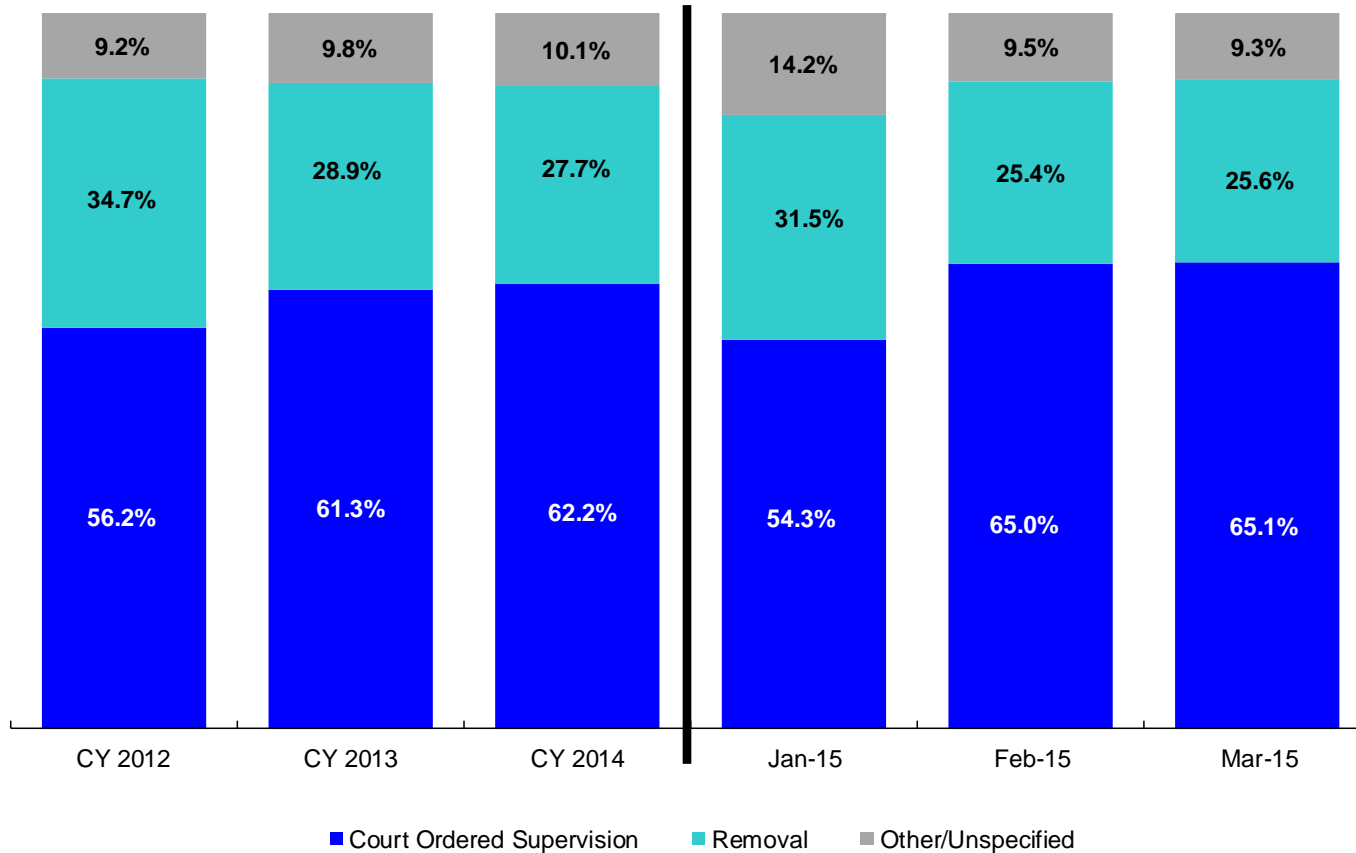
### OSI Investigations by Program

March 2014 – March 2015



	Mar 2014	Apr 2014	May 2014	Jun 2014	July 2014	Aug 2014	Sep 2014	Oct 2014	Nov 2014	Dec 2014	Jan 2015	Feb 2015	Mar 2015
Number of Investigations	229	207	239	194	193	187	186	240	166	192	213	166	239

### Article 10 Total Filings & Filing Outcomes, CY 2012 – March 2015

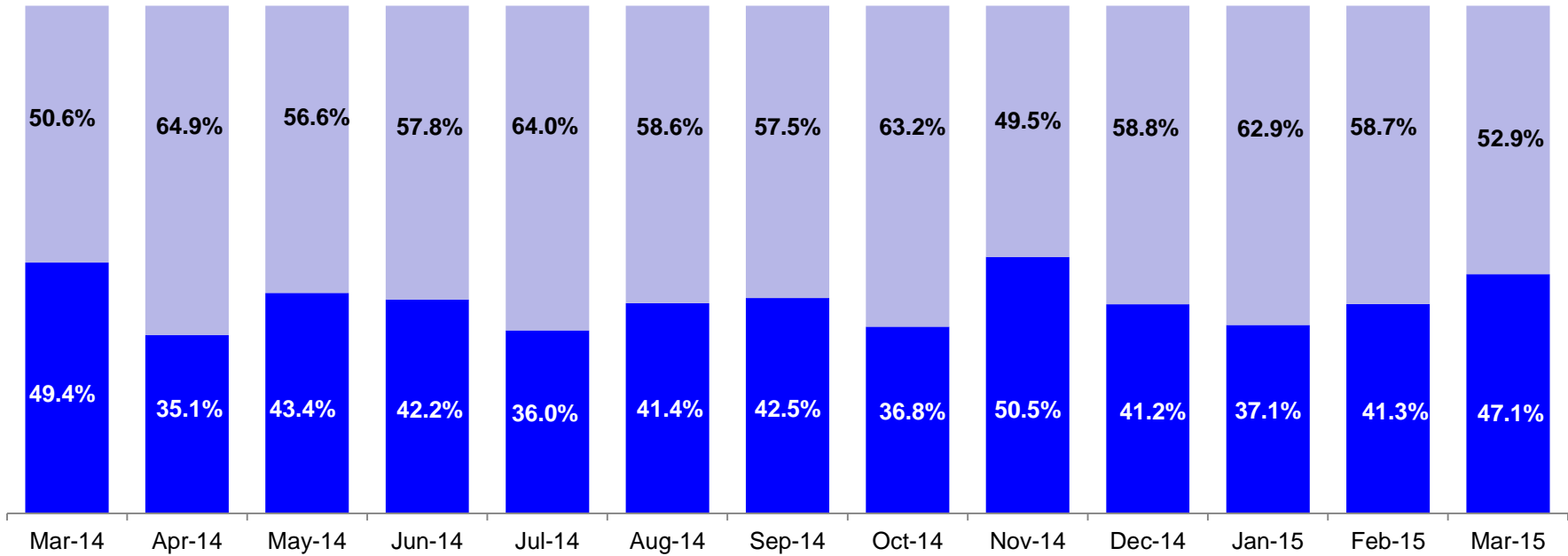


	CY 2012	CY 2013	CY 2014	Jan 2015	Feb 2015	Mar 2015
Art.10 Filings	8,913	9,318	9,900	812	924	1,012

Note: The category “Other/Unspecified” includes released with no supervision, no order issued and no outcome specified. Outcomes of cases heard the next day are not captured in this report



### Article 10 Filing Removals, March 2014 – March 2015



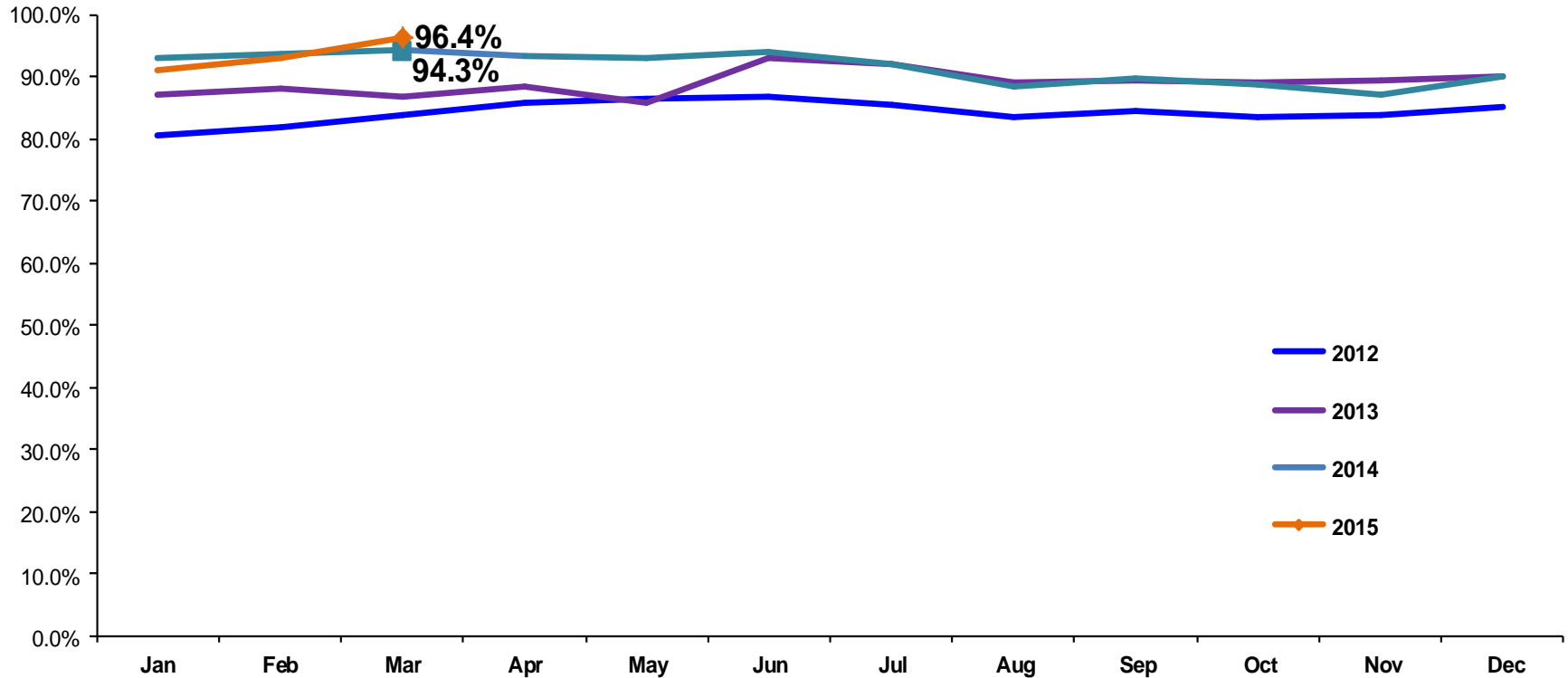
■ Pre-Filing Emergency Removals (court approved at initial hearing) ■ Post-Filing Removals (court ordered at initial hearing)

	Mar 2014	Apr 2014	May 2014	Jun 2014	Jul 2014	Aug 2014	Sep 2014	Oct 2014	Nov 2014	Dec 2014	Jan 2015	Feb 2015	Mar 2015
Number of Removals	255	239	267	249	172	227	179	231	194	262	256	235	259

## PPRS Utilization Rate

January 2012 – March 2015 (End of Month)

General Preventive



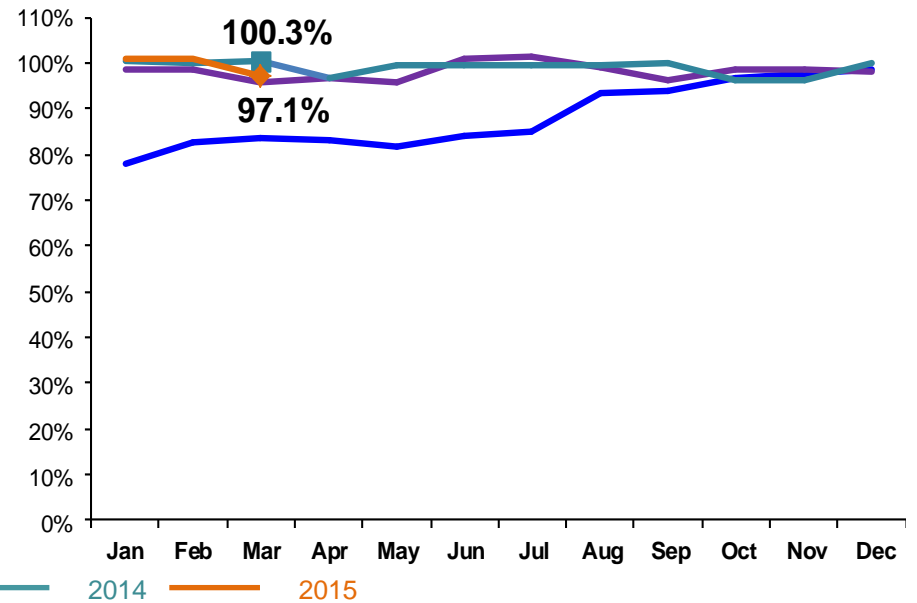
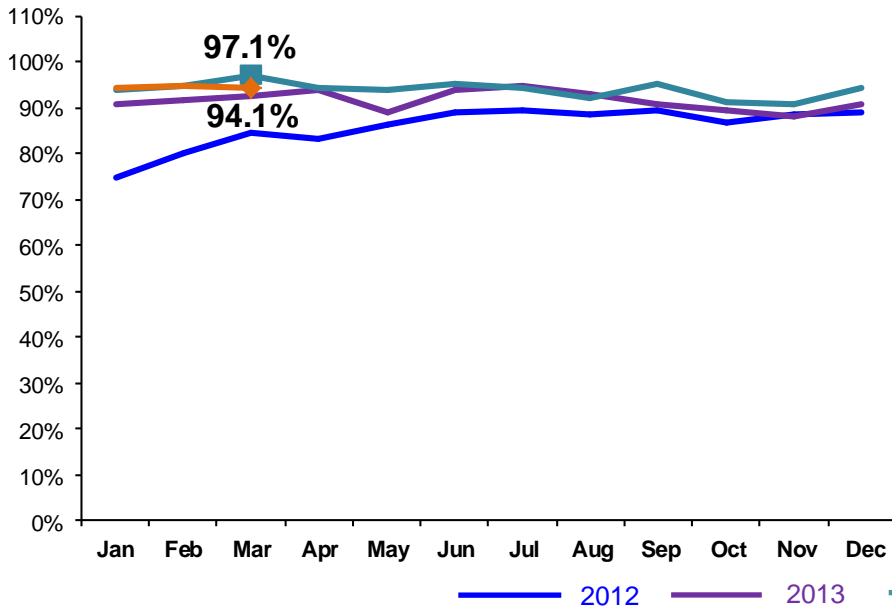
Notes: 1) Beacons programs are included in the GP utilization rates. 2) During June-October 2013 GP programs in the process of converting to EBMs were excluded from the GP utilization statistics.

### PPRS Utilization Rate

January 2012 – March 2015 (End of Month)

Family Treatment Rehabilitation

Medically Fragile

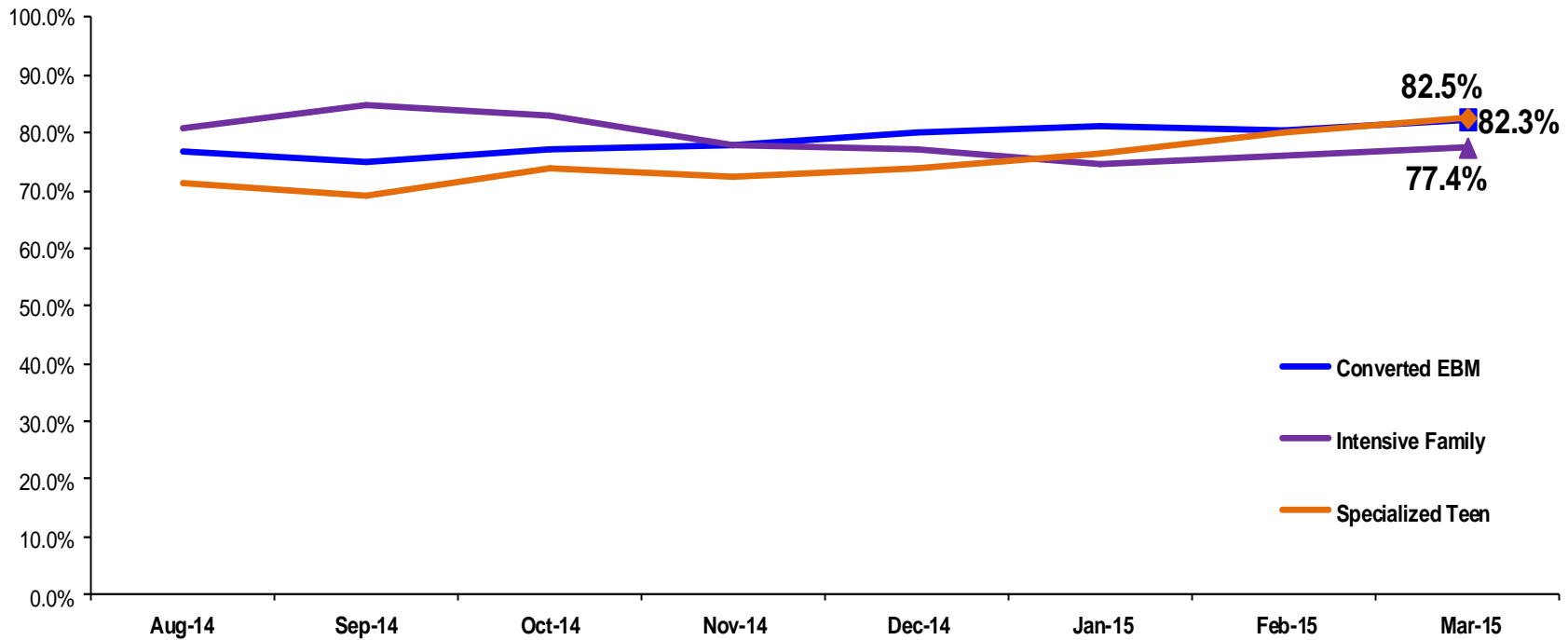


Note: During June -October 2013 FTR programs in the process of converting to EBMs were excluded from the FTR utilization statistics.

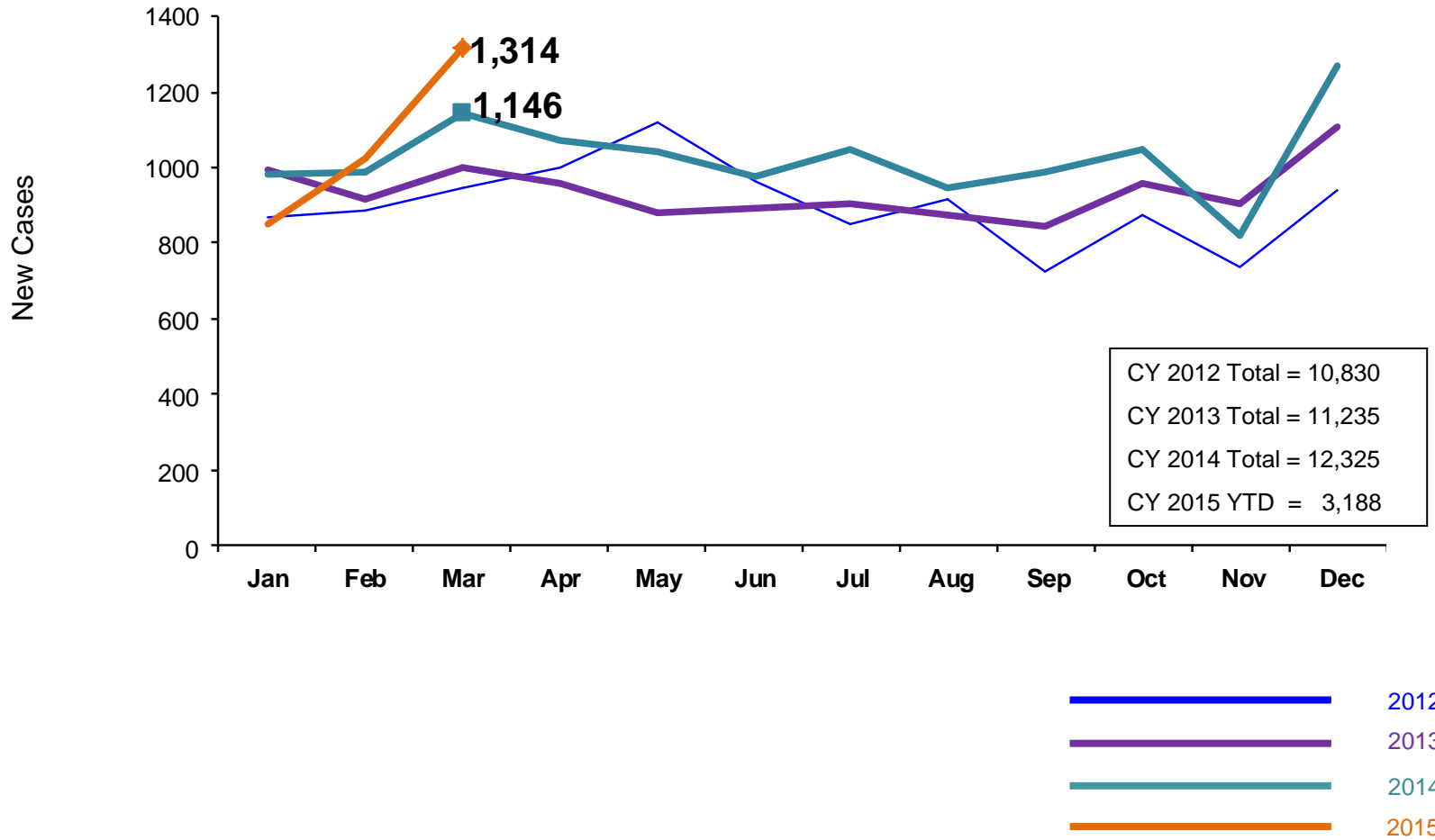
## PPRS Utilization Rate

August 2014 – March 2015 (End of Month)

Converted EBM, Intensive Family and Specialized Teen



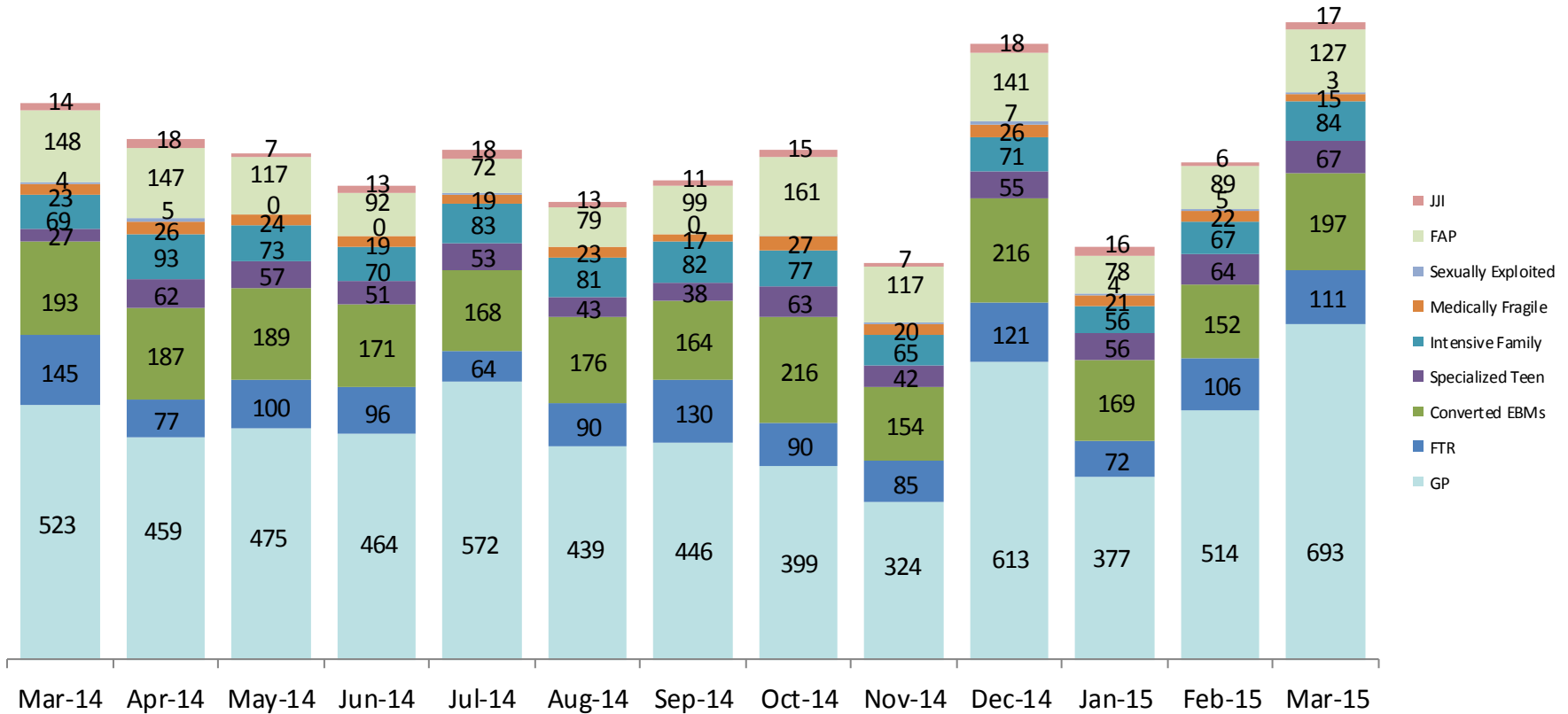
**New Preventive Cases\***  
January 2012 – March 2015



\*Notes: 1) New preventive cases do not include cases transferred from one preventive program to another. 2) See Pages 36 and 37 of the Appendix for supporting data.

### New Preventive Cases\* by Program Type

March 2014 – March 2015

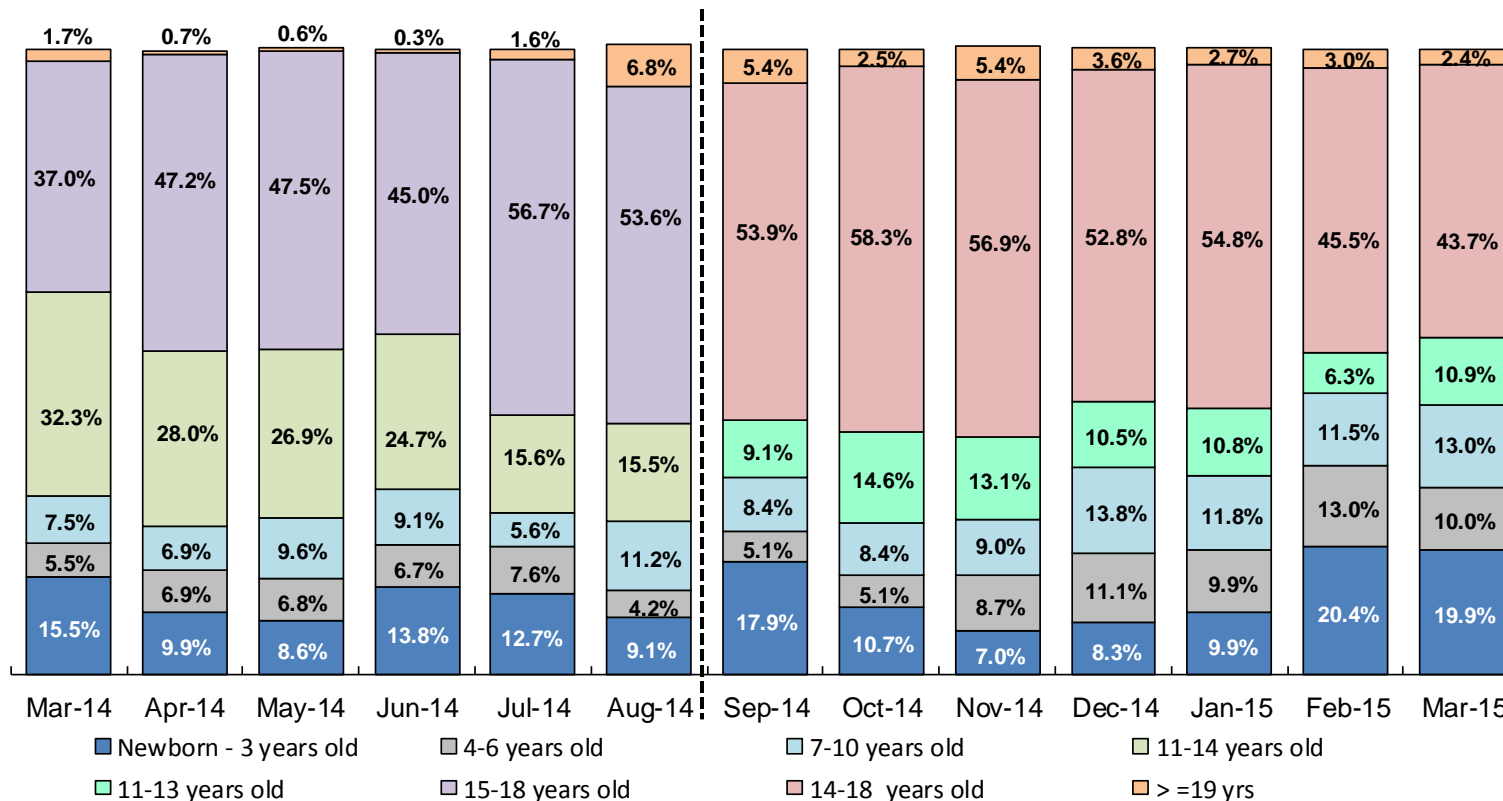


	Mar 2014	Apr 2014	May 2014	Jun 2014	Jul 2014	Aug 2014	Sep 2014	Oct 2014	Nov 2014	Dec 2014	Jan 2015	Feb 2015	Mar 2015
Number of New Preventive Cases	1,146	1,074	1,042	976	1,050	944	987	1,050	818	1,268	849	1,025	1,314

Note: New preventive cases do not include cases transferred from one preventive program to another.

## Average Pre-Placement Residential Monthly Population

March 2014 – March 2015



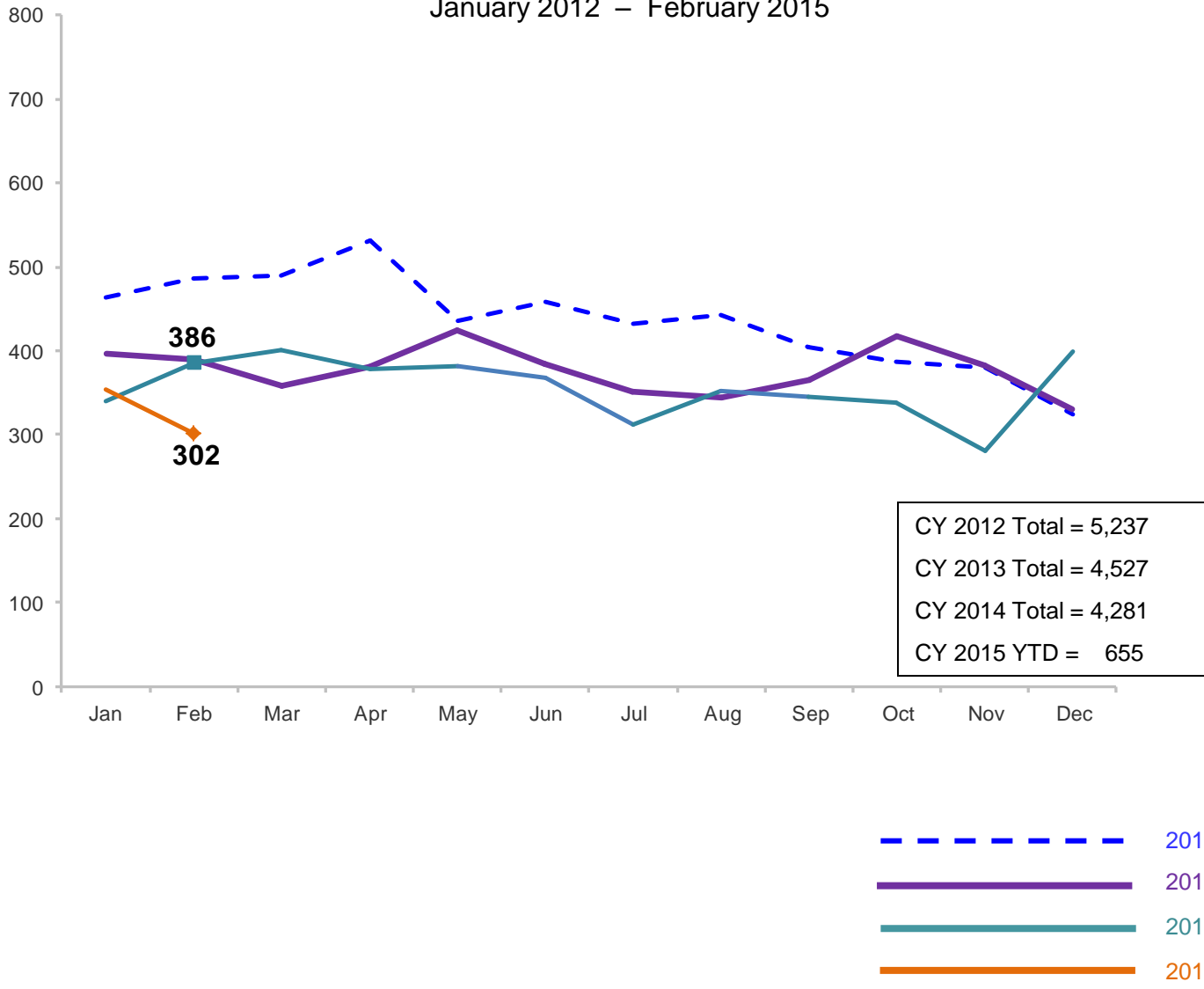
	Mar 2014	Apr 2014	May 2014	Jun 2014	Jul 2014	Aug 2014	Sep 2014	Oct 2014	Nov 2014	Dec 2014	Jan 2015	Feb 2015	Mar 2015
Average Number of Children	24	36	40	40	32	34	37	45	48	44	51	39	50

\*Beginning in December 2014 the pre-placement residential population includes children at the Children’s Center and at the MercyFirst Reception Center.

\*Beginning on September 6, 2014, the age categories reported changed from 11-14 to 11-13 year olds and 15-18 to 14-18 year olds.

### Total Monthly Placements

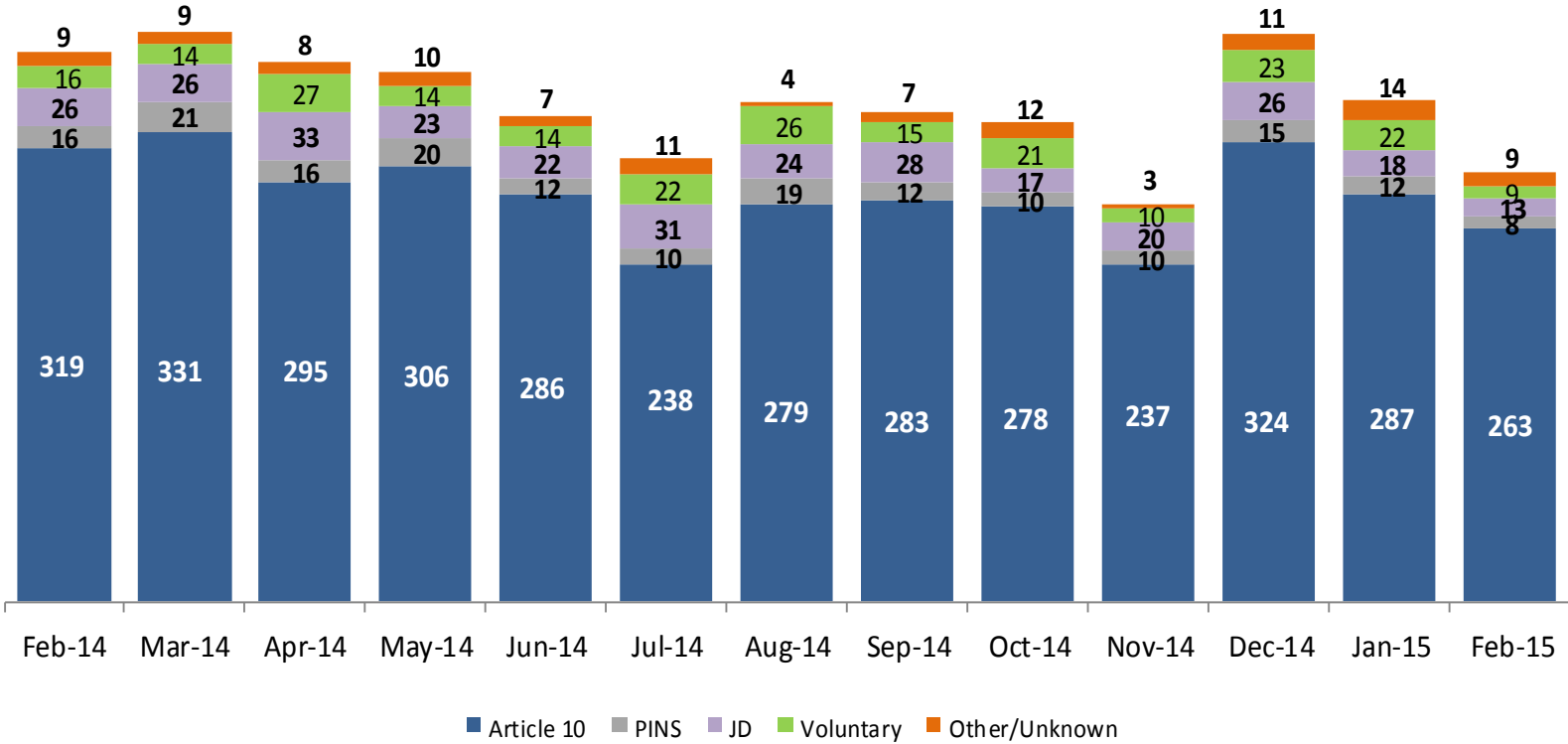
January 2012 – February 2015





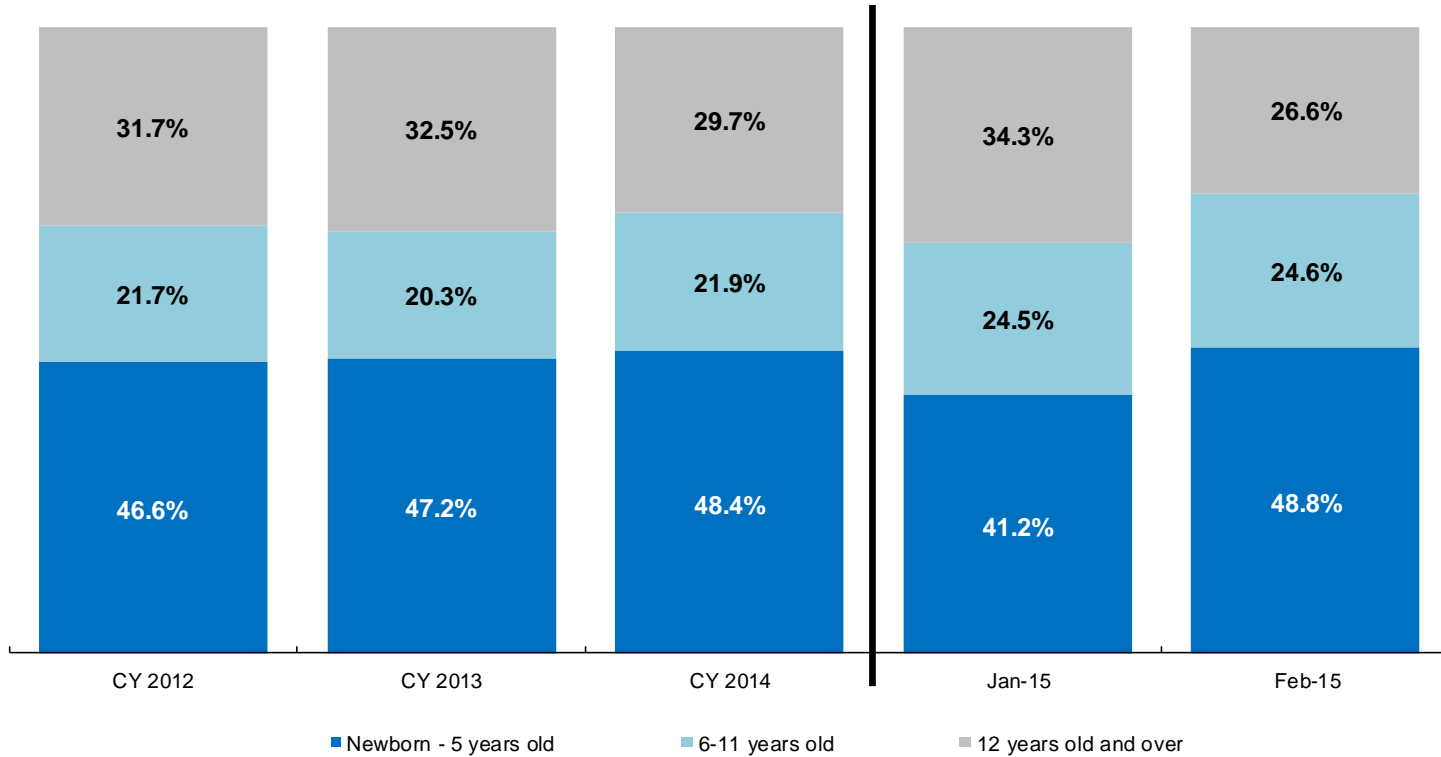
### Reason for Initial Placements into Foster Care

February 2014 – February 2015



	Feb 2014	Mar 2014	April 2014	May 2014	Jun 2014	Jul 2014	Aug 2014	Sep 2014	Oct 2014	Nov 2014	Dec 2014	Jan 2015	Feb 2015
Number of Placements	386	401	379	382	367	312	352	345	338	280	399	353	302

### Placements\* by Age CY 2012 - February 2015

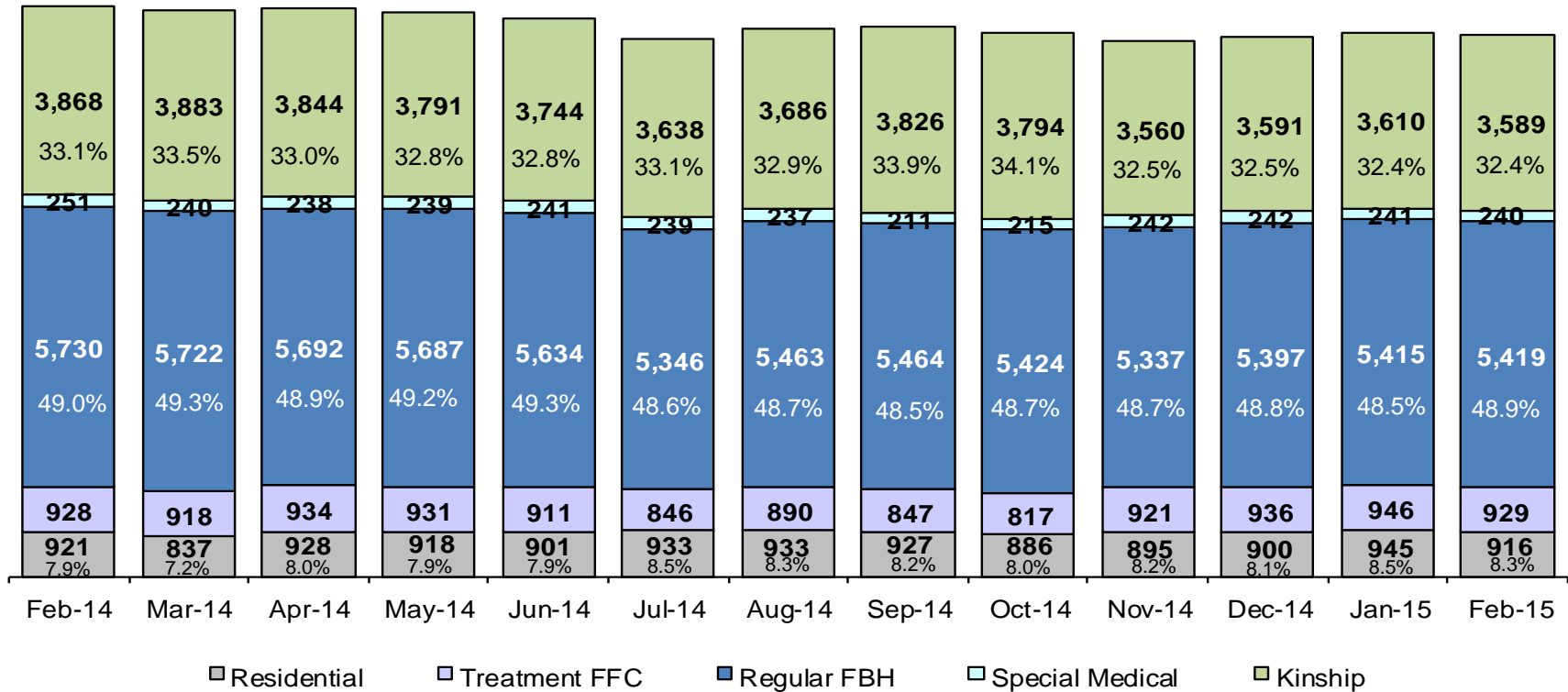


	CY 2012	CY 2013	CY 2014	Jan 2015	Feb 2015
Placements	4,823	4,170	3,983	335	289

\*Excludes JD placements.

### Children in Foster Care\*

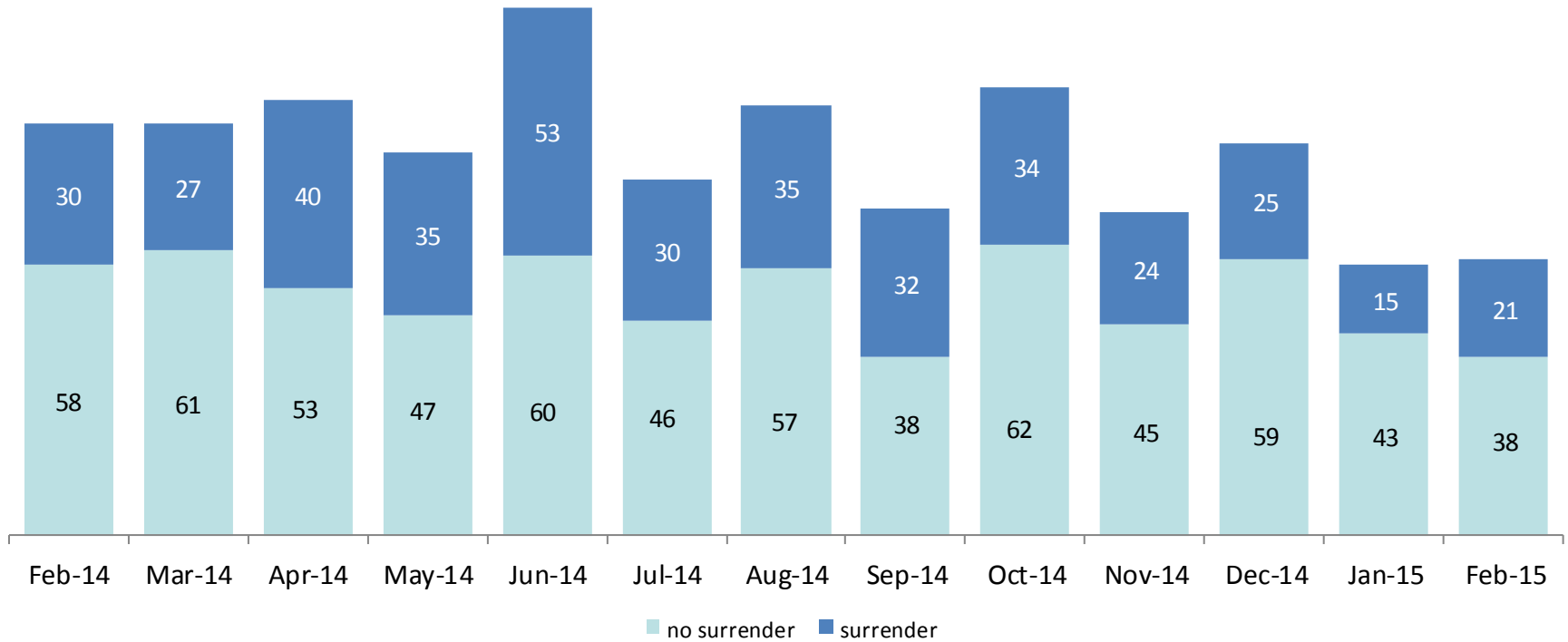
February 2014 – February 2015 (end of month)



	Feb 2014	Mar 2014	Apr 2014	May 2014	Jun 2014	Jul 2014	Aug 2014	Sep 2014	Oct 2014	Nov 2014	Dec 2014	Jan 2015	Feb 2015
Number in Foster Care	11,698	11,600	11,636	11,566	11,431	11,002	11,209	11,275	11,136	10,955	11,066	11,157	11,093

\*Excludes JD placements and includes approximately 400 young children who are living in foster homes or residential care facilities with their mothers who are in foster care (8D children). 19

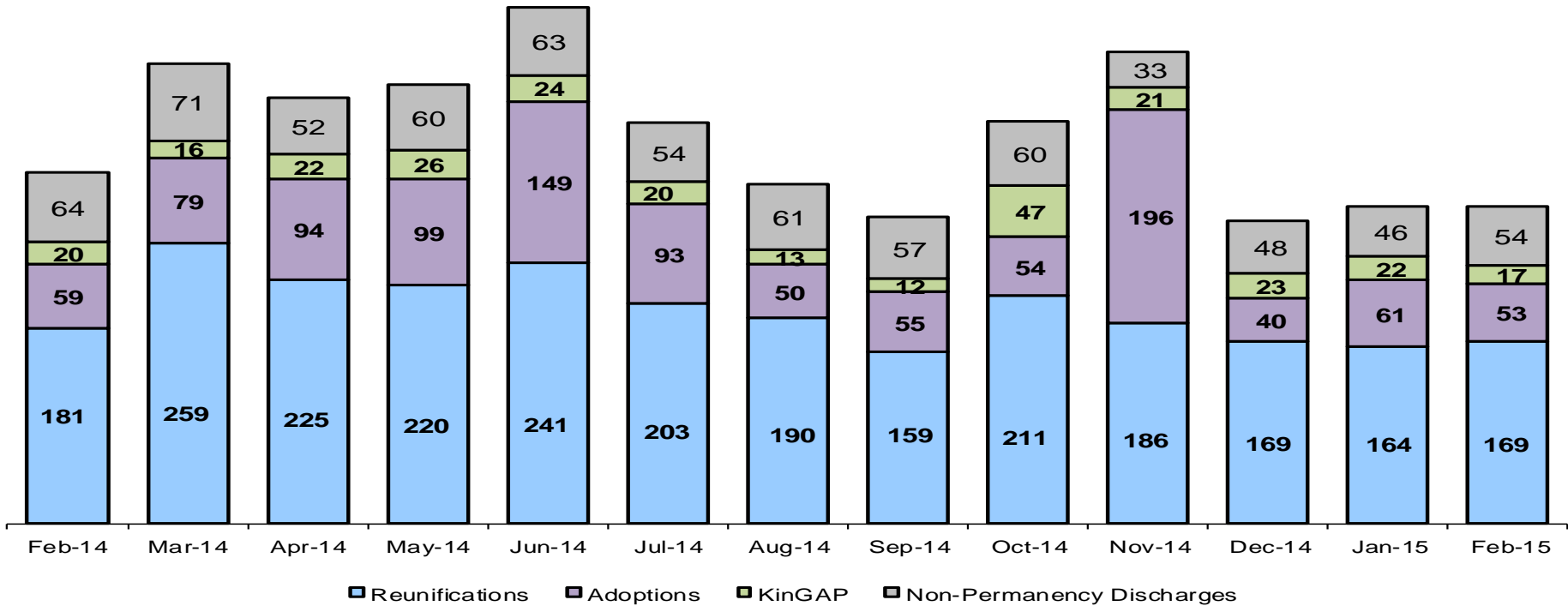
### Children Freed for Adoption, Surrender by at Least One Parent February 2014 – February 2015



	Feb 2014	Mar 2014	Apr 2014	May 2014	Jun 2014	Jul 2014	Aug 2014	Sep 2014	Oct 2014	Nov 2014	Dec 2014	Jan 2015	Feb 2015
Number Freed for Adoption	88	88	93	82	113	76	92	70	96	69	84	58	59

## Permanency and Non-Permanency\* Discharges from Foster Care\*\*

February 2014 – February 2015

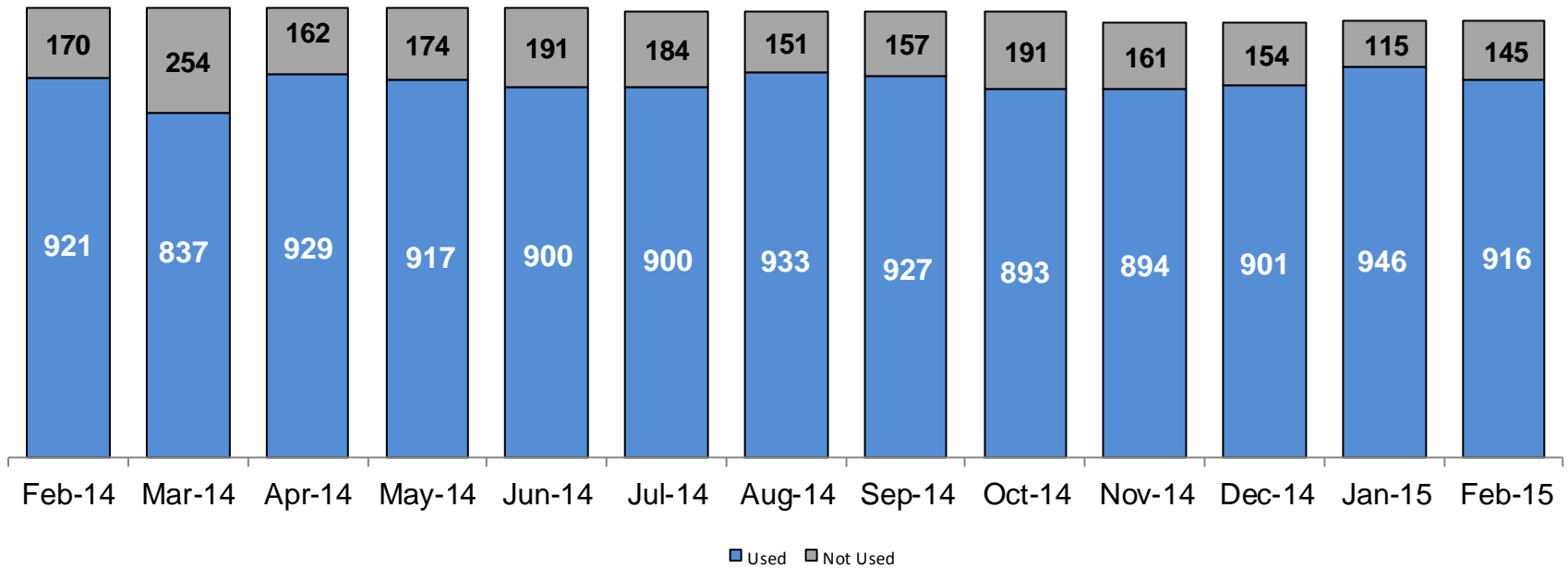


	Feb 2014	Mar 2014	Apr 2014	May 2014	Jun 2014	Jul 2014	Aug 2014	Sep 2014	Oct 2014	Nov 2014	Dec 2014	Jan 2015	Feb 2015
Number of Discharges	324	425	393	405	477	370	314	283	372	436	280	293	293

\*Non-permanency discharges include AWOL, APPLA , other discharge destinations such as psychiatric institutions and correctional facilities and discharges with unspecified destinations.

\*\*Excludes discharges of youth who were in JD status during their foster care spell.

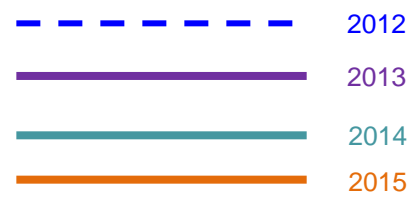
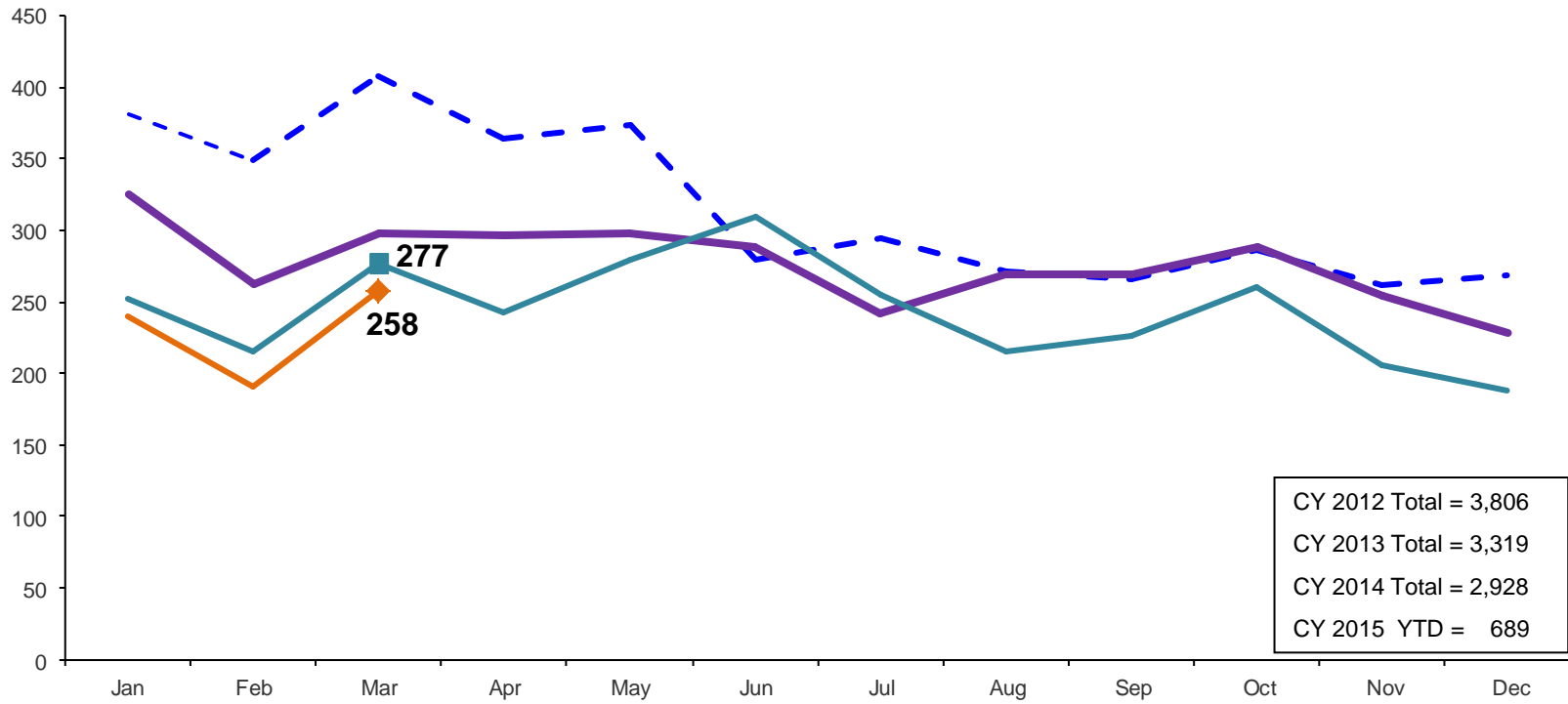
### Residential Care Capacity and Utilization, February 2014 – February 2015



	Feb 2014	Mar 2014	Apr 2014	May 2014	Jun 2014	Jul 2014	Aug 2014	Sep 2014	Oct 2014	Nov 2014	Dec 2014	Jan 2015	Feb 2015
Capacity	1,091	1,091	1,091	1,091	1,091	1,084	1,084	1,084	1,084	1,055	1,055	1,061	1,061

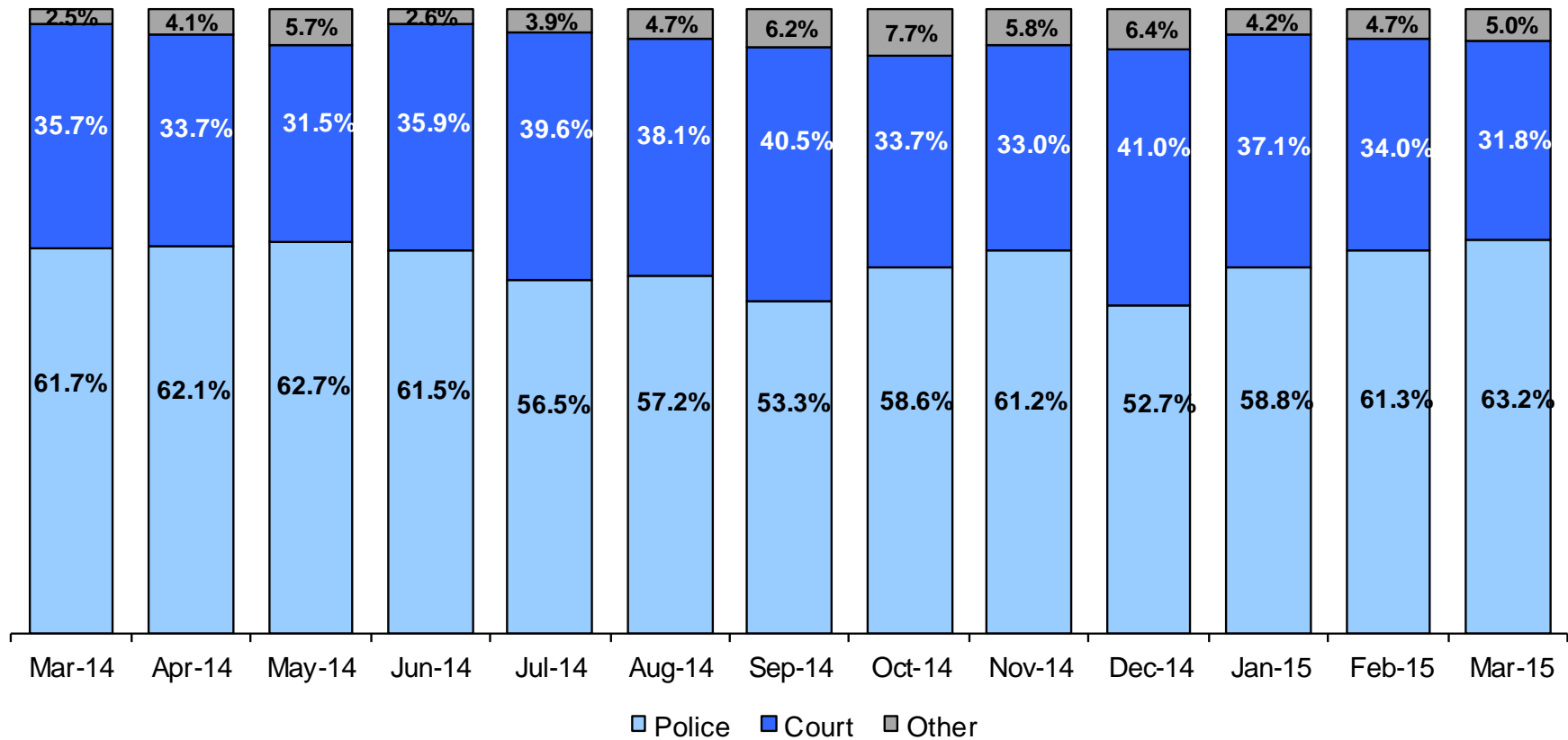
### Total Monthly Admissions to Detention

February 2012 – March 2015 (Monthly Total)



### Admit Authority on Admissions

February 2014 - March 2015 (Monthly Total)



	Mar 2014	Apr 2014	May 2014	Jun 2014	Jul 2014	Aug 2014	Sep 2014	Oct 2014	Nov 2014	Dec 2014	Jan 2015	Feb 2015	Mar 2015
Number of Admissions	277	243	279	309	255	215	227	261	206	188	240	191	258

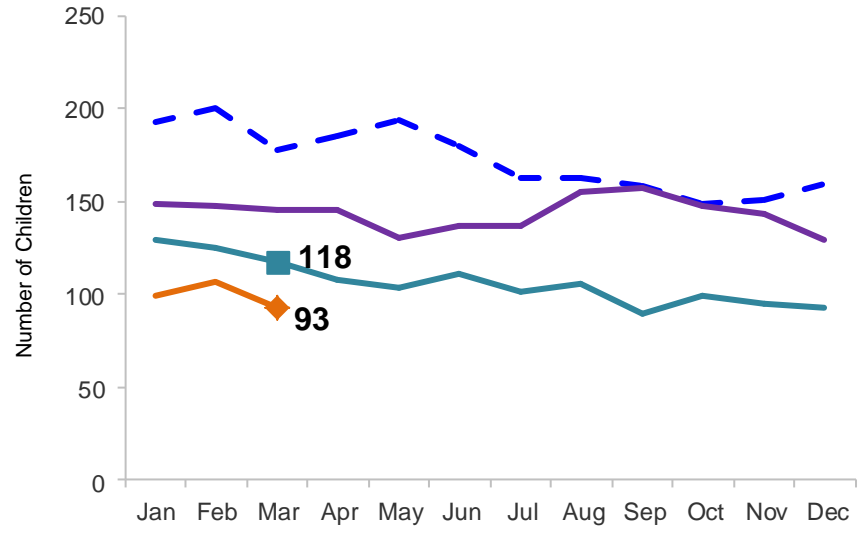
Note: Other Admit Authority includes the Sheriff Department, Department of Corrections and ACS.



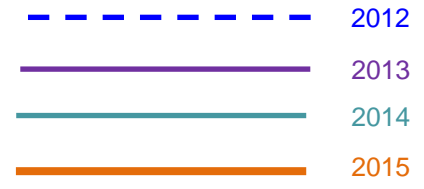
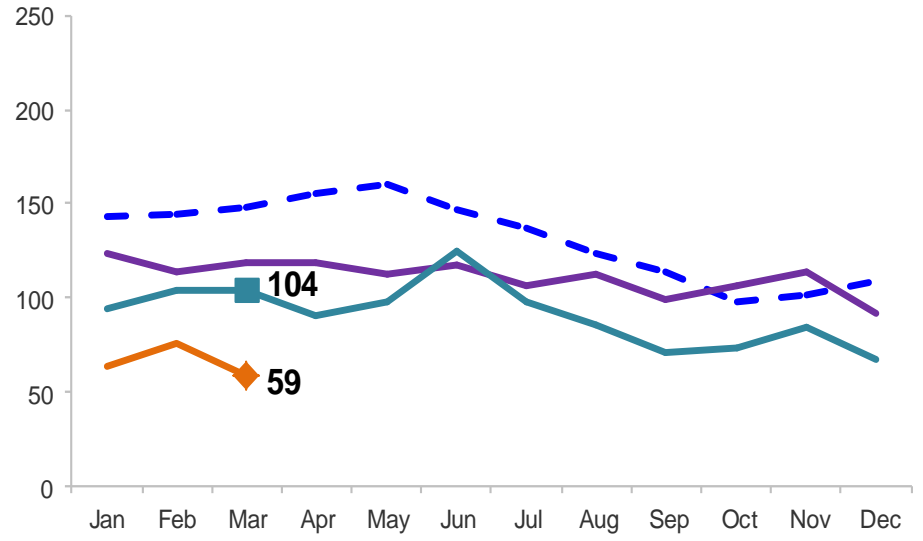
### Monthly Average Daily Population

January 2012 – March 2015

#### Secure Detention

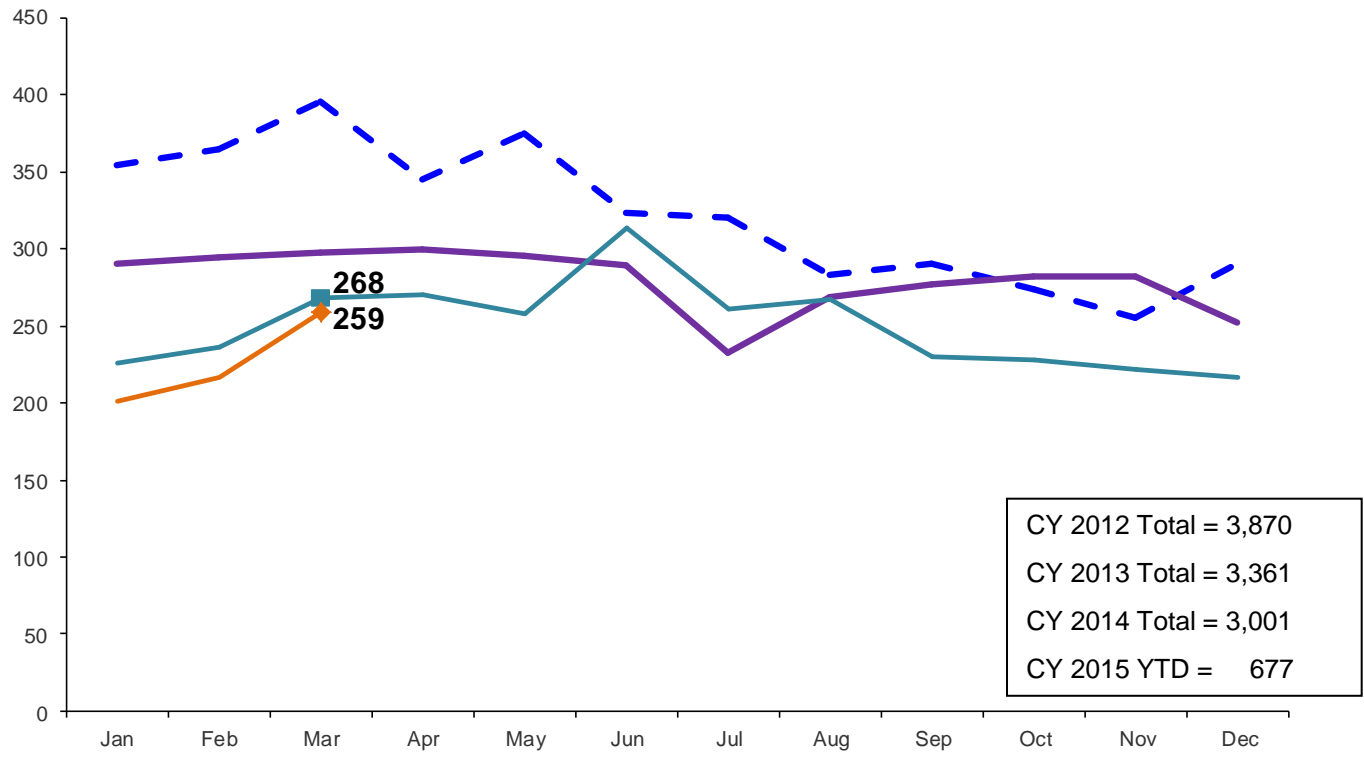


#### Non-Secure Detention



# Total Monthly Releases from Detention

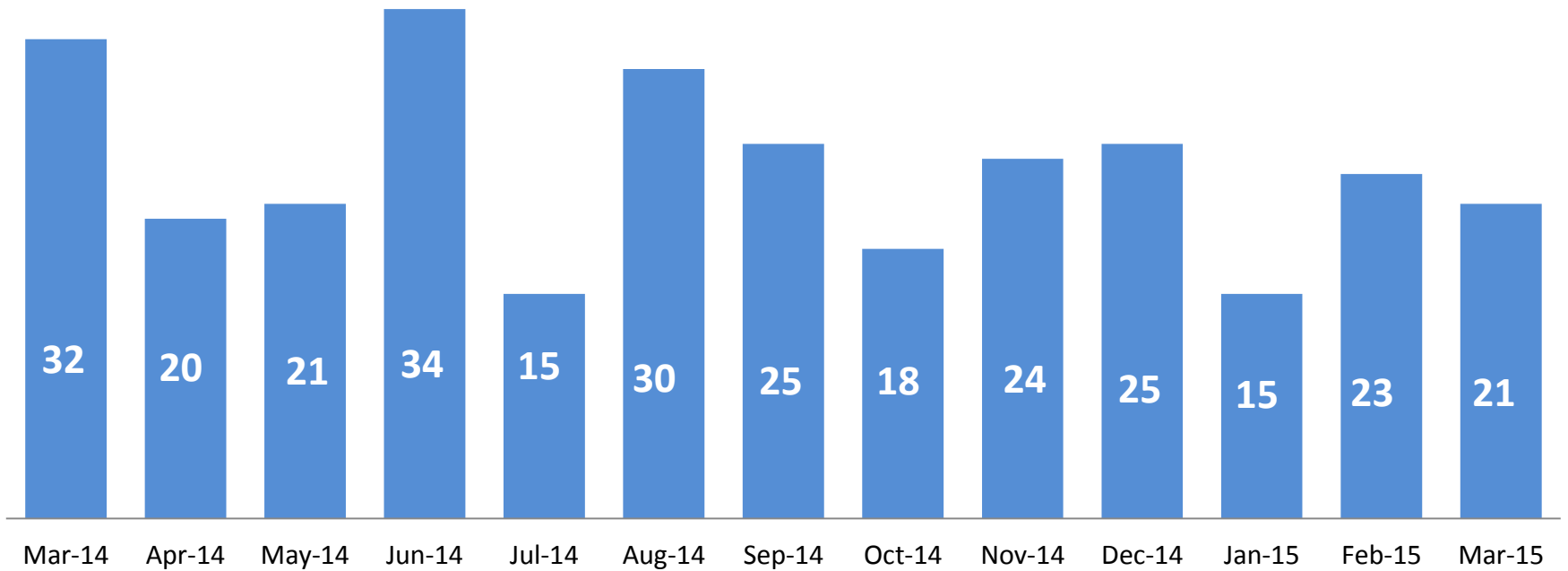
January 2012 – March 2015 (Monthly Total)



- 2012
- 2013
- 2014
- 2015

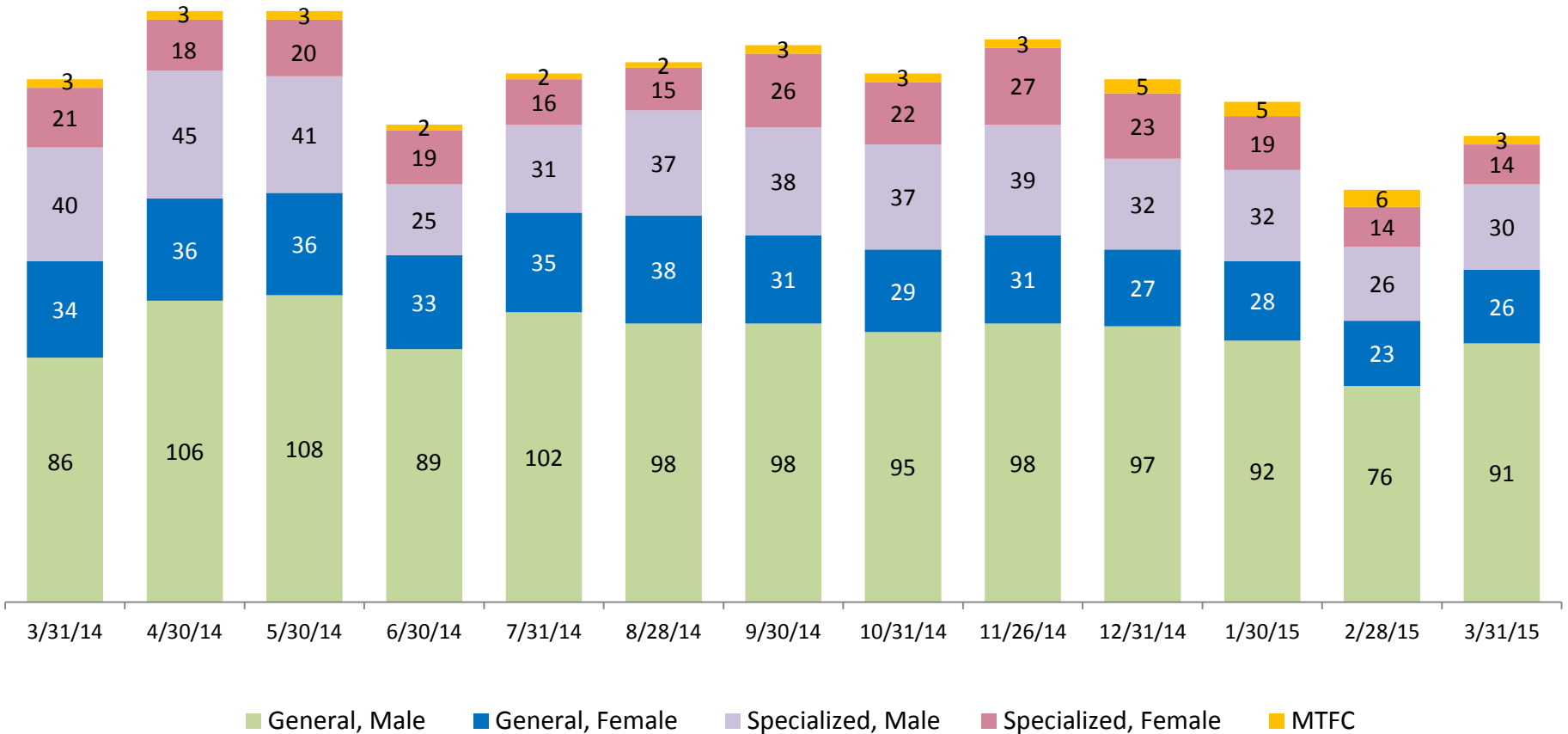
### ACS NSP Intakes

March 2014 – March 2015



# ACS Non-Secure Placement, in 24 hour Care

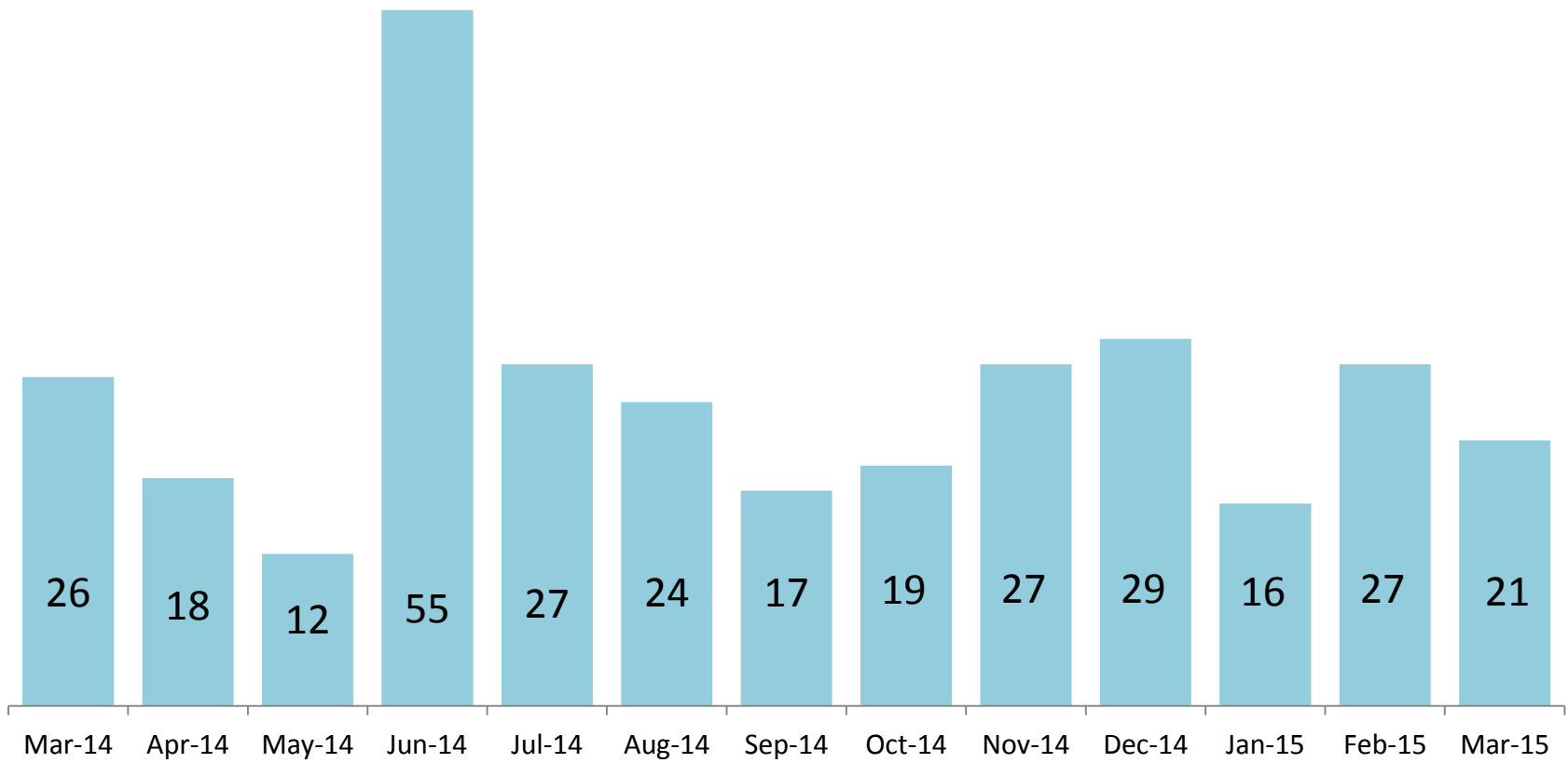
March 2014 – March 2015 (Point-in-Time)



	3/31/14	4/30/14	5/30/14	6/30/14	7/31/14	8/28/14	9/30/14	10/31/14	11/26/14	12/31/14	1/30/15	2/28/15	3/31/15
Number in Placement	184	208	208	168	186	190	196	186	198	184	176	145	164

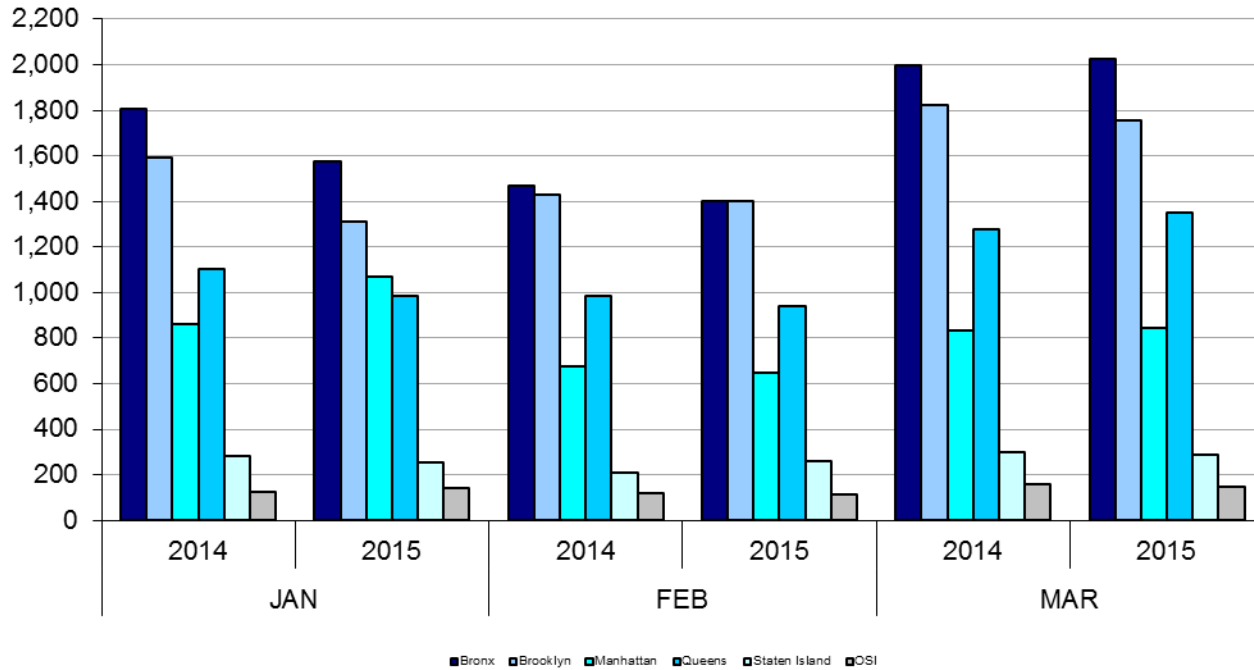
### Releases from NSP to Aftercare

March 2014 – March 2015



# Appendix

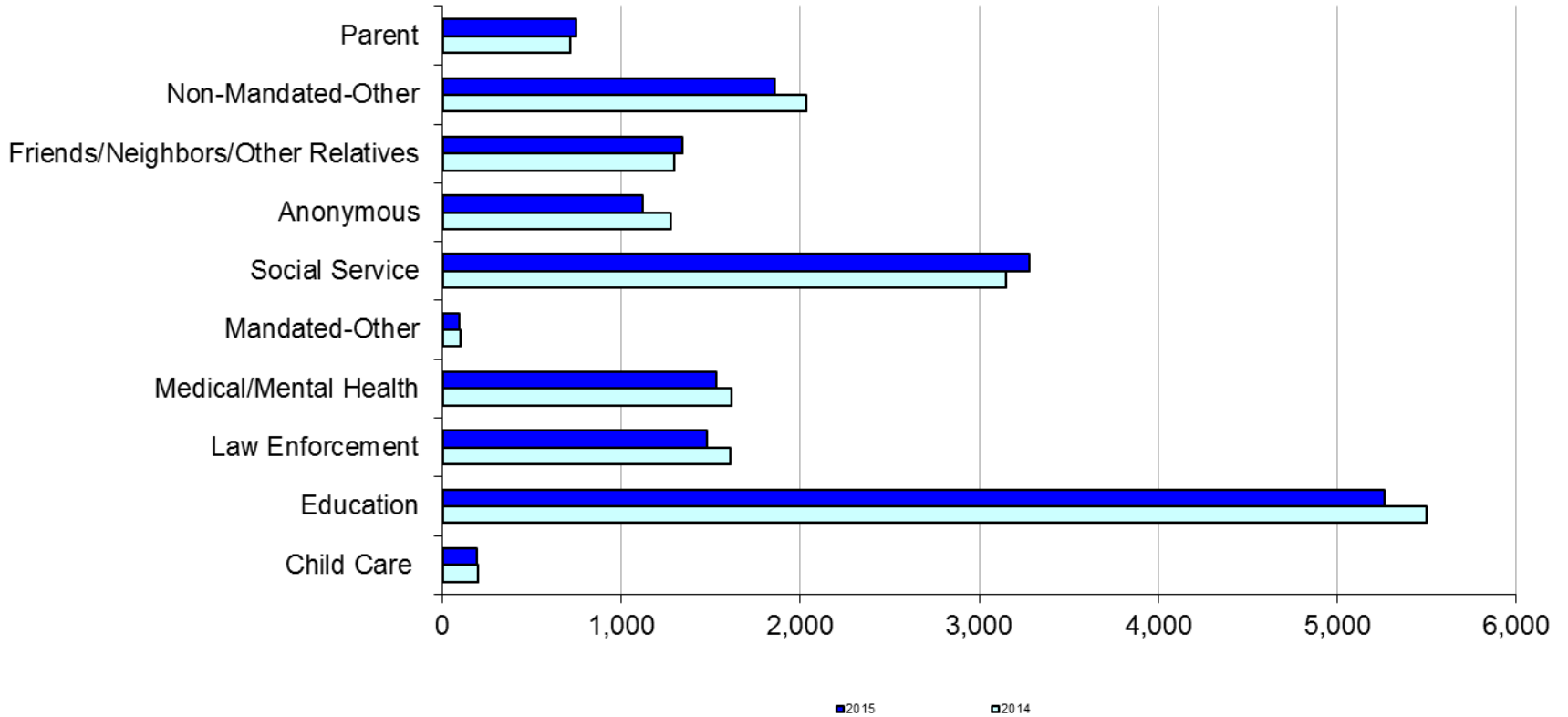
Figure 1: SCR Intakes by Borough, JAN 14 – MAR 14 and JAN 15 – MAR 15



**TABLE 1 - SCR Intake Changes by Borough, JAN 14 – MAR 14 and JAN 15 – MAR 15**

Month	Year	Bronx	Brooklyn	Manhattan	Queens	Staten Island	OSI	Other	Total
JAN	2014	1,806	1,594	861	1,103	281	124	154	5,923
	2015	1,577	1,313	1,071	986	253	143	127	5,470
	% Change	-12.7%	-17.6%	24.4%	-10.6%	-10.0%	15.3%	-17.5%	-7.6%
FEB	2014	1,470	1,432	676	985	210	120	125	5,018
	2015	1,403	1,399	646	939	257	112	123	4,879
	% Change	-4.6%	-2.3%	-4.4%	-4.7%	22.4%	-6.7%	-1.6%	-2.8%
MAR	2014	2,000	1,821	834	1,276	297	161	135	6,524
	2015	2,025	1,757	845	1,351	288	149	130	6,545
	% Change	1.3%	-3.5%	1.3%	5.9%	-3.0%	-7.5%	-3.7%	0.3%
Total	2014	5,276	4,847	2,371	3,364	788	405	414	17,465
	2015	5,005	4,469	2,562	3,276	798	404	380	16,894
	% Change	-5.1%	-7.8%	8.1%	-2.6%	1.3%	-0.2%	-8.2%	-3.3%

**Figure 2: Citywide SCR Intakes by Reporter Group, JAN 14 – MAR 14 and JAN 15 – MAR 15**

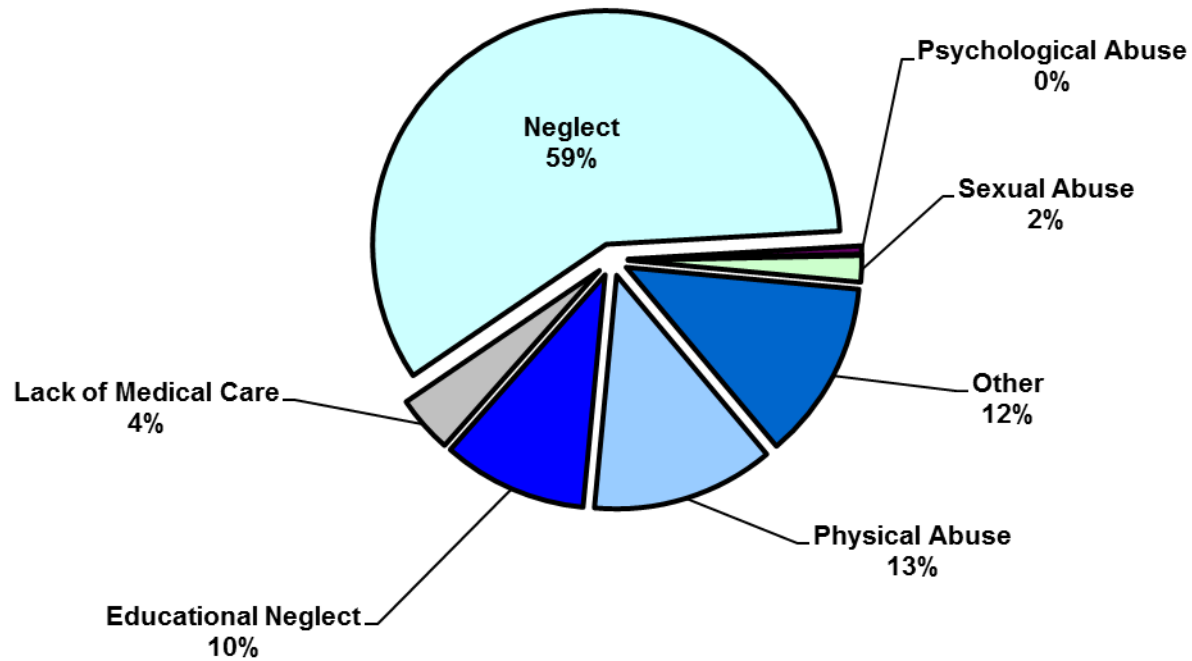




## TABLE 2 - SCR Intakes by Reporter Group, JAN 14 – MAR 14 and JAN 15 – MAR 15

Year	Child Care/ Substitute Care Personnel	Educational Personnel	Law Enforcement	Medical/ Mental Health Personnel	Mandated- Other	Social Service Personnel	Anonymous	Friends/ Neighbors/ Other Relatives	Non- Mandated- Other	Parent	Foster Parent	Total
<b>Bronx</b>												
2014	57	1,737	454	482	27	994	351	400	578	192	0	5,272
2015	46	1,638	330	446	23	1,068	327	357	560	211	0	5,006
% Change	-19.3%	-5.7%	-27.3%	-7.5%	-14.8%	7.4%	-6.8%	-10.8%	-3.1%	9.9%	--	-5.0%
<b>Brooklyn</b>												
2014	49	1,588	407	423	28	836	384	367	590	177	0	4,849
2015	52	1,473	400	387	25	785	320	357	500	170	0	4,469
% Change	6.1%	-7.2%	-1.7%	-8.5%	-10.7%	-6.1%	-16.7%	-2.7%	-15.3%	-4.0%	--	-7.8%
<b>Manhattan</b>												
2014	30	583	287	242	10	458	171	176	317	96	0	2,370
2015	21	583	324	250	17	511	185	243	303	124	0	2,561
% Change	-30.0%	0.0%	12.9%	3.3%	70.0%	11.6%	8.2%	38.1%	-4.4%	29.2%	--	8.1%
<b>Queens</b>												
2014	26	1,219	287	295	24	548	248	241	344	130	2	3,364
2015	35	1,184	275	291	17	616	168	261	315	115	0	3,277
% Change	34.6%	-2.9%	-4.2%	-1.4%	-29.2%	12.4%	-32.3%	8.3%	-8.4%	-11.5%	--	-2.6%
<b>Staten Island</b>												
2014	5	286	65	81	4	114	69	66	62	36	0	788
2015	12	297	49	70	6	107	79	79	59	39	1	798
% Change	140.0%	3.8%	-24.6%	-13.6%	50.0%	-6.1%	14.5%	19.7%	-4.8%	8.3%	--	1.3%
<b>OSI</b>												
2014	23	39	24	39	6	84	27	22	89	50	2	405
2015	20	49	22	47	7	66	30	12	93	58	0	404
% Change	-13.0%	25.6%	-8.3%	20.5%	16.7%	-21.4%	11.1%	-45.5%	4.5%	16.0%	--	-0.2%
<b>Other</b>												
2014	8	46	83	55	3	113	24	25	50	35	0	442
2015	7	38	81	39	1	125	8	33	28	29	0	389
% Change	-12.5%	-17.4%	-2.4%	-29.1%	-66.7%	10.6%	-66.7%	32.0%	-44.0%	-17.1%	--	-12.0%
<b>Citywide</b>												
2014	198	5,498	1,607	1,617	102	3,147	1,274	1,297	2,030	716	4	17,490
2015	193	5,262	1,481	1,530	96	3,278	1,117	1,342	1,858	746	1	16,904
% Change	-2.5%	-4.3%	-7.8%	-5.4%	-5.9%	4.2%	-12.3%	3.5%	-8.5%	4.2%	-75.0%	-3.4%

**Figure 3: SCR Allegations, JAN 15 – MAR 15**



Total Allegations = 42,219

**TABLE 3 - SCR Allegations, JAN 14 - MAR 14 and JAN 15 – MAR 15**

Year	Physical Abuse	Educational Neglect	Lack of Medical Care	Neglect	Psychological Abuse	Sexual Abuse	Other	Total
<b>Bronx</b>								
2014	1,421	1,777	580	7,642	67	203	1,646	13,336
2015	1,470	1,529	558	7,497	73	249	1,584	12,960
% Change	3.4%	-14.0%	-3.8%	-1.9%	9.0%	22.7%	-3.8%	-2.8%
<b>Brooklyn</b>								
2014	1,481	1,488	513	7,285	70	254	1,478	12,569
2015	1,495	1,245	431	6,853	67	215	1,366	11,672
% Change	0.9%	-16.3%	-16.0%	-5.9%	-4.3%	-15.4%	-7.6%	-7.1%
<b>Manhattan</b>								
2014	583	492	212	2911	15	88	602	4,903
2015	592	497	194	2832	28	76	557	4,776
% Change	1.5%	1.0%	-8.5%	-2.7%	86.7%	-13.6%	-7.5%	-2.6%
<b>Queens</b>								
2014	1,189	641	305	4,625	56	141	981	7,938
2015	1,172	633	325	4,659	56	135	1,030	8,010
% Change	-1.4%	-1.2%	6.6%	0.7%	0.0%	-4.3%	5.0%	0.9%
<b>Staten Island</b>								
2014	190	214	73	1,202	15	34	313	2,041
2015	247	213	79	1,285	8	40	360	2,232
% Change	30.0%	-0.5%	8.2%	6.9%	-46.7%	17.6%	15.0%	9.4%
<b>OSI</b>								
2014	266	53	74	1,069	3	45	127	1,637
2015	271	67	56	1,105	6	40	154	1,699
% Change	1.9%	26.4%	-24.3%	3.4%	100.0%	-11.1%	21.3%	3.8%
<b>Other</b>								
2014	97	59	56	670	11	38	172	1,103
2015	82	44	34	507	4	17	182	870
% Change	-15.5%	-25.4%	-39.3%	-24.3%	-63.6%	-55.3%	5.8%	-21.1%
<b>Citywide</b>								
2014	5,227	4,724	1,813	25,404	237	803	5,319	43,527
2015	5,329	4,228	1,677	24,738	242	772	5,233	42,219
% Change	2.0%	-10.5%	-7.5%	-2.6%	2.1%	-3.9%	-1.6%	-3.0%

**TABLE 4 - Purchased Preventive Cases  
Opened and Closed  
January 2012 to March 2015**

Month	Opened Cases	Closed Cases
<b>2012</b>		
Jan-12	870	629
Feb-12	889	835
Mar-12	944	991
Apr-12	997	870
May-12	1,117	979
Jun-12	965	869
Jul-12	853	979
Aug-12	917	1,007
Sep-12	727	900
Oct-12	875	915
Nov-12	738	702
Dec-12	938	871
<b>2013</b>		
Jan-13	960	884
Feb-13	873	916
Mar-13	962	1,171
Apr-13	940	988
May-13	864	1,337
Jun-13	863	780
Jul-13	868	1,004
Aug-13	802	1,084
Sep-13	844	724
Oct-13	933	765
Nov-13	901	685
Dec-13	1,106	552
<b>2014</b>		
Jan-14	983	640
Feb-14	987	679
Mar-14	1,146	874
Apr-14	1,074	896
May-14	1,042	888
Jun-14	976	762
Jul-14	1,050	1,077
Aug-14	944	943
Sep-14	987	705
Oct-14	1,050	819
Nov-14	818	638
Dec-14	1,268	721
<b>2015</b>		
Jan-15	814	716
Feb-15	1,026	590
Mar-15	1,314	686

**Table 5 - Referrals to Purchased Preventive Services by Source  
January 2012 to March 2015**

Month	Total Referrals	Division of Child Protection	Foster Care Agencies	PPRS Transfer	School	Self	Other Sources*
<b>2012</b>							
Jan-12	1,431	66.5%	0.7%	8.5%	3.6%	3.8%	17.0%
Feb-12	1,043	78.2%	1.1%	9.0%	1.9%	6.7%	3.1%
Mar-12	1,525	73.6%	0.9%	6.0%	1.8%	3.9%	13.8%
Apr-12	1,370	72.8%	1.0%	9.4%	1.2%	4.2%	11.4%
May-12	1,463	70.9%	1.0%	7.6%	1.1%	4.4%	15.0%
Jun-12	1,279	73.8%	0.5%	5.9%	1.0%	4.7%	14.2%
Jul-12	1,308	77.4%	1.2%	7.0%	0.3%	3.7%	10.5%
Aug-12	1,391	74.0%	0.9%	11.7%	0.3%	2.9%	10.2%
Sep-12	1,110	70.5%	1.9%	9.6%	1.2%	5.0%	11.9%
Oct-12	1,159	61.1%	1.4%	12.6%	2.7%	4.9%	17.3%
Nov-12	1,106	67.0%	1.0%	9.9%	2.2%	4.7%	15.3%
Dec-12	1,206	68.7%	0.8%	5.8%	2.7%	5.6%	16.4%
CY 2012	15,391	71.3%	1.0%	8.5%	1.6%	4.5%	13.1%
<b>2013</b>							
Jan-13	1,474	74.1%	1.2%	7.3%	1.2%	3.7%	12.5%
Feb-13	1,308	75.8%	1.1%	8.0%	1.6%	2.9%	10.6%
Mar-13	1,270	73.5%	1.2%	6.7%	2.4%	3.9%	12.3%
Apr-13	1,421	77.9%	0.8%	7.4%	0.9%	3.0%	10.1%
May-13	1,320	68.4%	0.5%	10.2%	1.5%	3.8%	15.5%
Jun-13	953	69.2%	1.2%	9.4%	2.6%	5.0%	12.6%
Jul-13	1,014	66.3%	1.9%	14.4%	1.6%	3.9%	11.9%
Aug-13	1,212	70.5%	0.7%	11.8%	0.7%	4.7%	11.6%
Sep-13	1,262	64.0%	2.1%	11.3%	1.7%	6.7%	14.2%
Oct-13	1,319	61.0%	1.1%	9.0%	2.9%	7.5%	18.5%
Nov-13	1,249	55.9%	1.6%	10.5%	4.6%	9.2%	18.3%
Dec-13	1,464	62.2%	1.2%	8.2%	2.3%	9.2%	17.0%
CY 2013	15,266	68.3%	1.2%	9.4%	2.0%	5.3%	13.8%
<b>2014</b>							
Jan-14	1,537	70.0%	1.2%	6.6%	2.3%	5.8%	14.2%
Feb-14	1,334	69.7%	0.8%	8.4%	1.7%	5.5%	13.9%
Mar-14	1,612	70.0%	1.4%	8.6%	1.6%	5.3%	13.1%
Apr-14	1,525	70.2%	0.9%	7.6%	2.1%	3.7%	15.4%
May-14	1,580	74.4%	0.7%	8.3%	1.4%	5.2%	10.0%
Jun-14	1,550	78.6%	1.2%	6.3%	1.2%	3.2%	9.4%
Jul-14	1,659	79.6%	1.5%	6.7%	0.4%	4.2%	7.6%
Aug-14	1,395	72.2%	1.6%	10.8%	0.3%	4.9%	10.3%
Sep-14	1,597	49.4%	1.5%	7.6%	0.3%	4.5%	36.8%
Oct-14	1,634	68.2%	1.9%	10.0%	1.2%	4.6%	14.1%
Nov-14	1,311	66.4%	0.9%	14.3%	2.4%	3.9%	12.1%
Dec-14	1,785	71.1%	1.4%	8.8%	2.9%	4.8%	11.0%
CY 2014	18,519	70.1%	1.3%	8.6%	1.5%	4.6%	14.0%
<b>2015</b>							
Jan-15	1,432	76.5%	1.5%	9.8%	1.4%	3.1%	7.6%
Feb-15	1,589	76.2%	0.8%	8.7%	1.6%	4.5%	8.2%
Mar-15	1,866	74.3%	0.8%	8.1%	1.4%	4.5%	10.8%

\*Other Community Sources includes the Department of Homeless Services, Family Court, FAP, Hospitals and Medical facilities, the NYC Housing Authority, PINS/DAS, Probation, and Sponsor Agencies.