

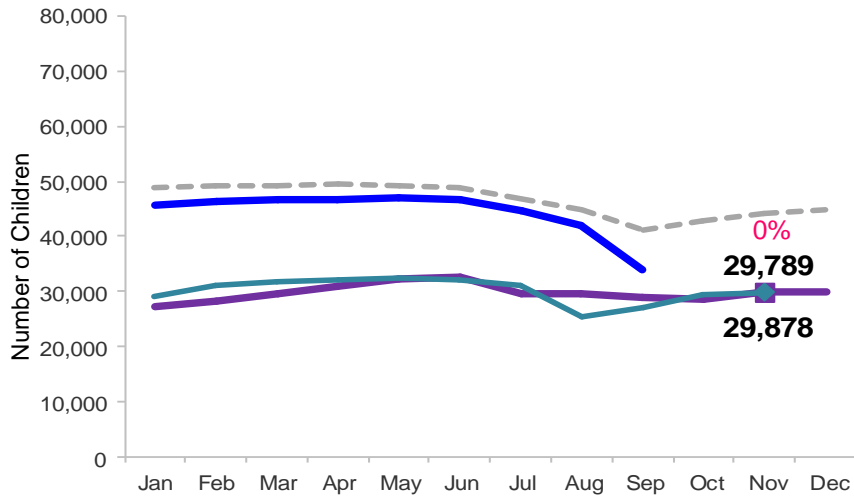


Flash

December 2014

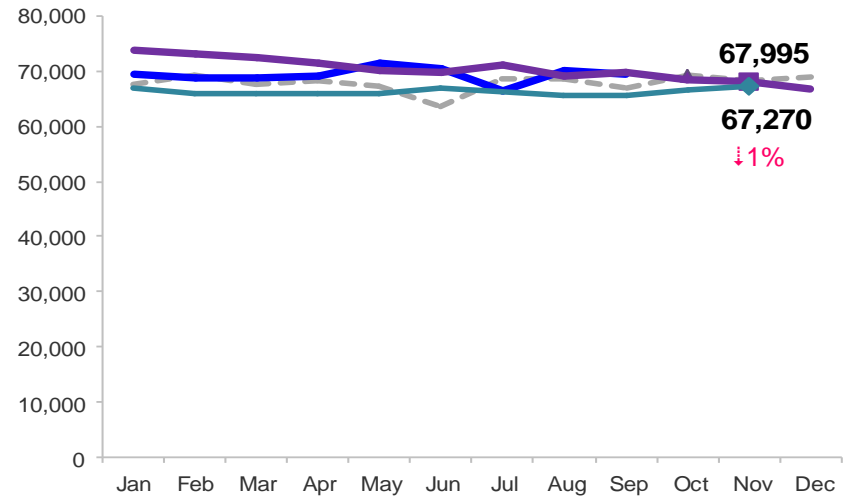
Children Enrolled in Contracted EarlyLearn Programs

January 2011 – November 2014 (End of Month)



Children Using Vouchers for Child Care

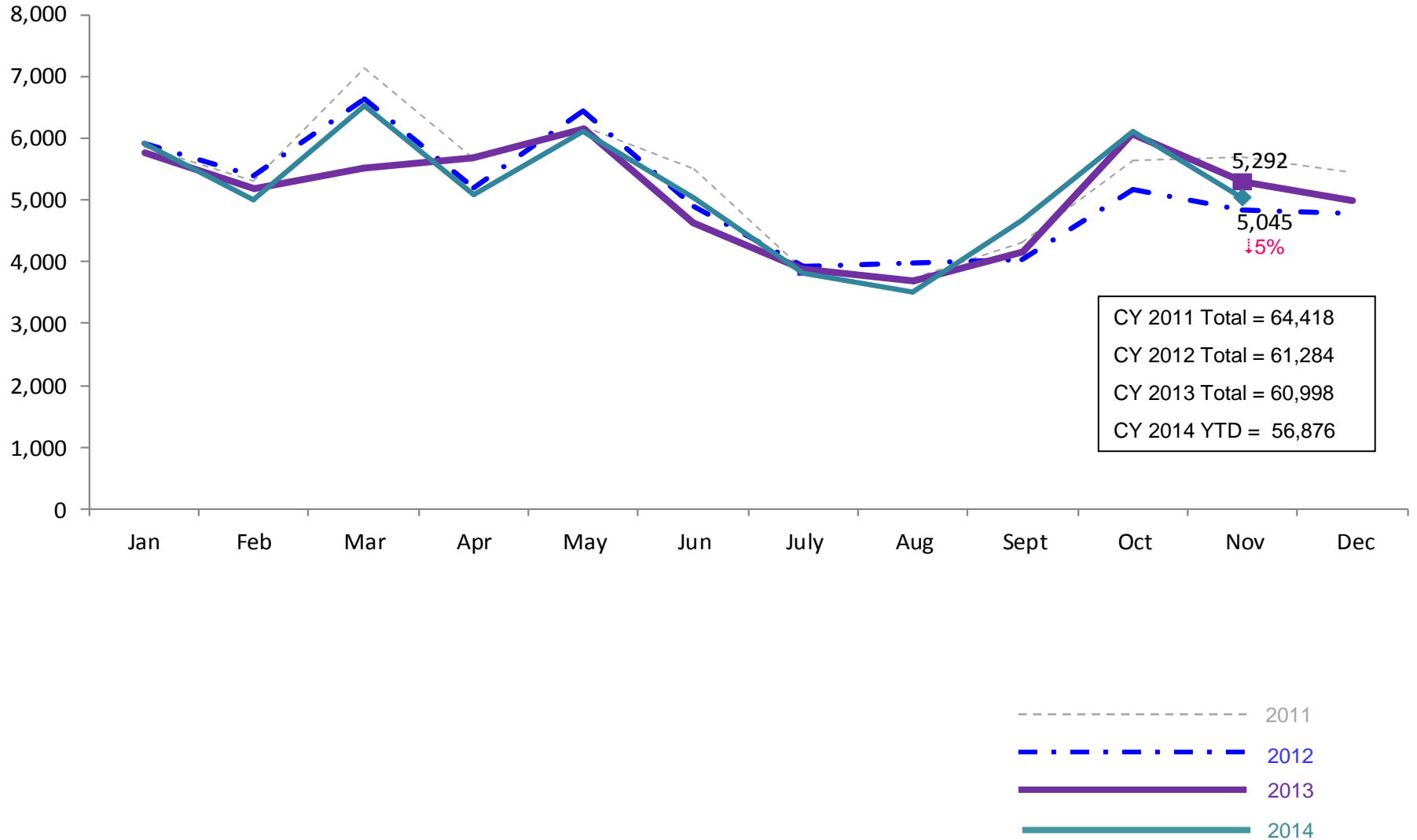
January 2011 – November 2014 (End of Month)



Notes: 1) Beginning October 1, 2012 ACS converted its early care and education system to a new model, EarlyLearn NYC. Enrollment data for the transitional months of October – December 2012 are not available because contractors were in the midst of implementing the data collection systems. 2) Percentage change is November 2013 vs. November 2014.

SCR Intakes

January 2011 – November 2014 (Monthly Total)

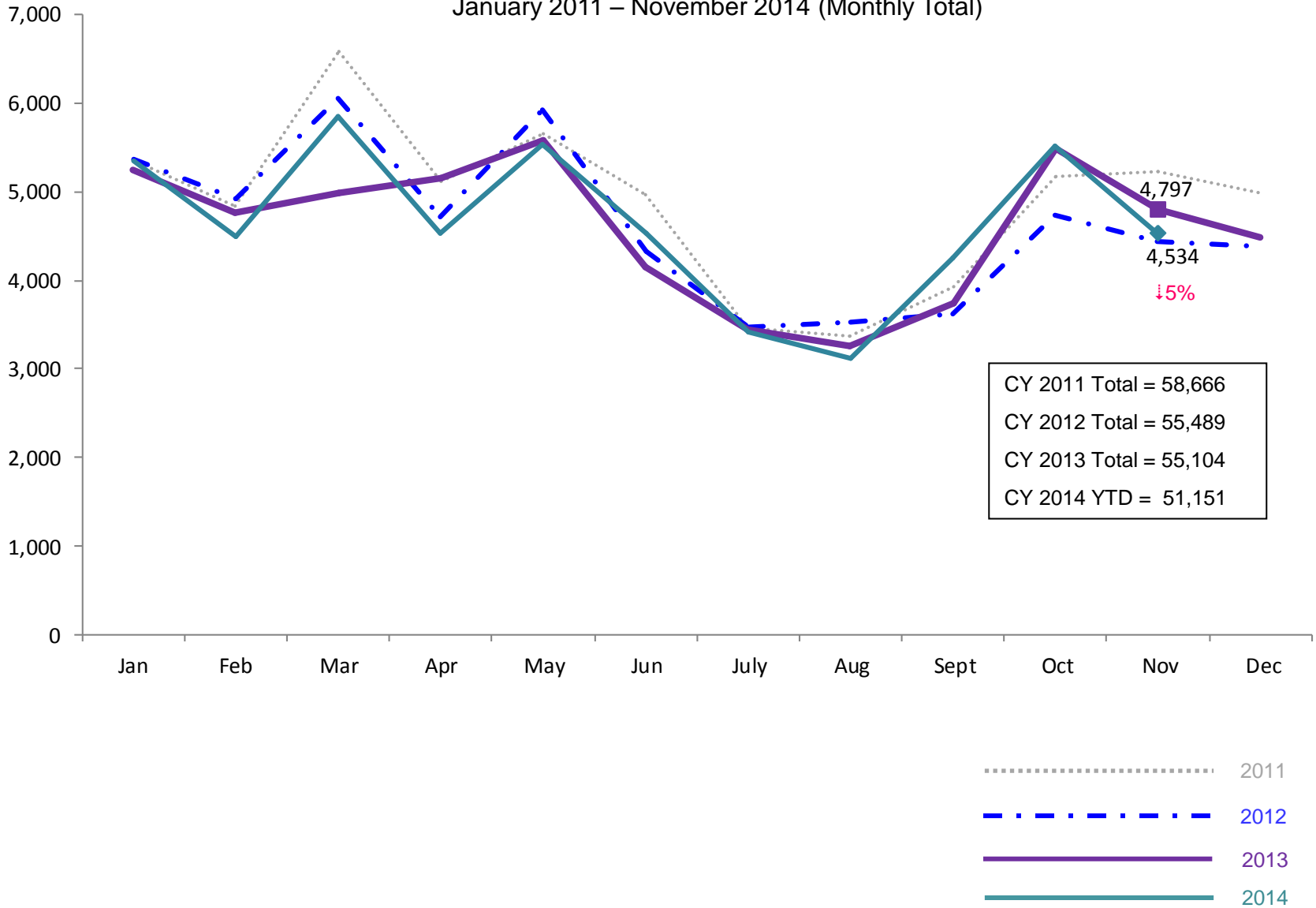


Note: Percentage change is November 2013 vs. November 2014.

See Pages 30 through 35 of the Appendix for supporting data.

SCR Consolidated Investigations

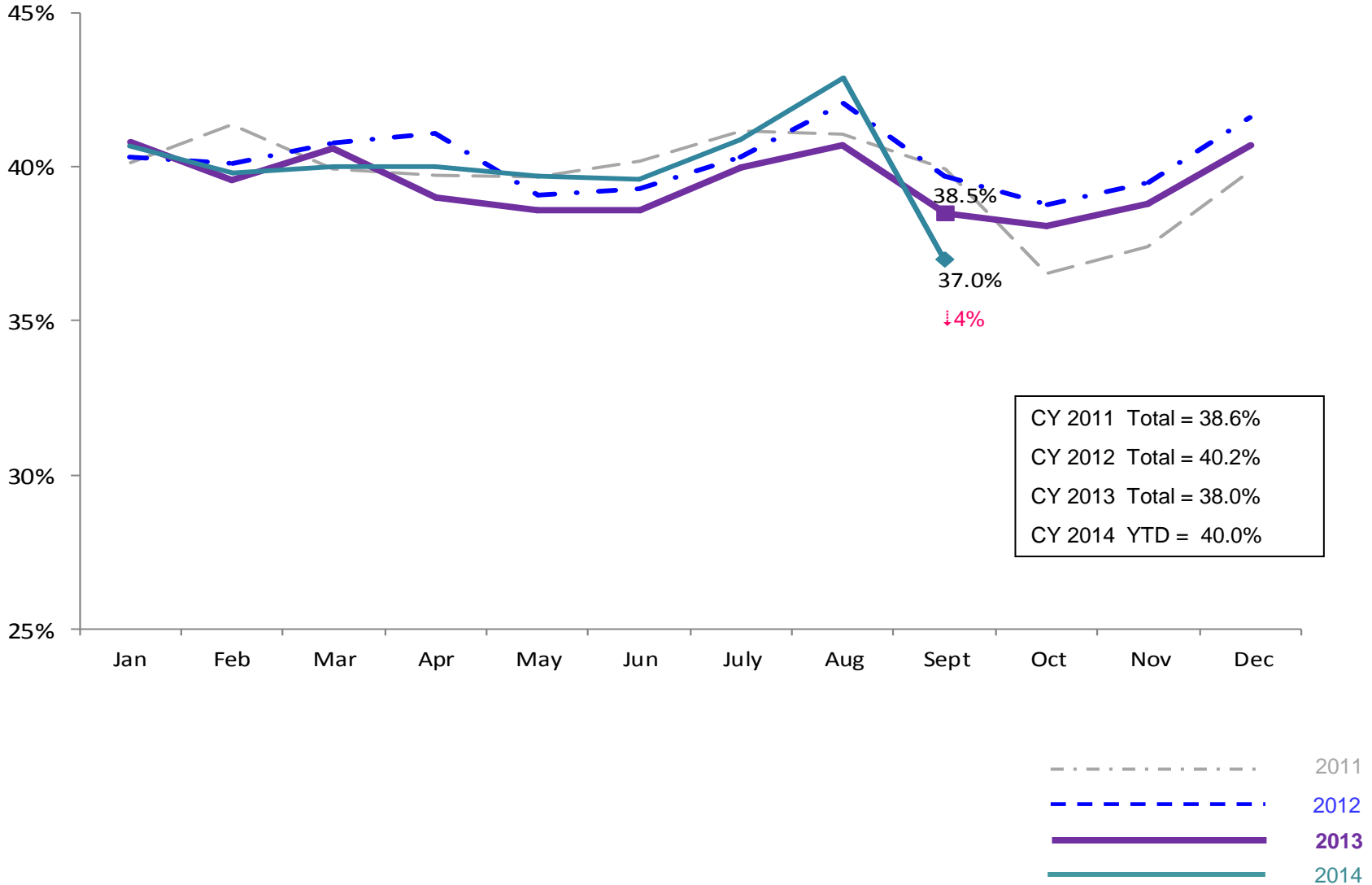
January 2011 – November 2014 (Monthly Total)



Note: Percentage change is November 2013 vs. November 2014.

SCR Investigation Indication Rate

January 2011 – September 2014

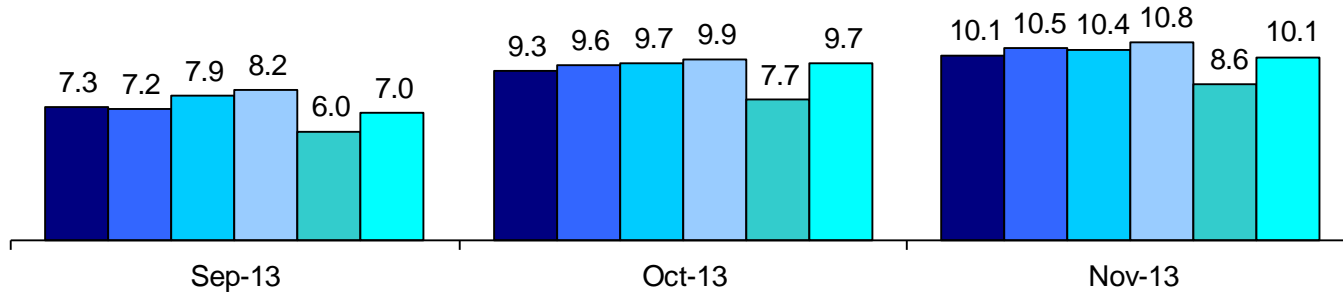


Note: Percentage change is September 2013 vs. September 2014.

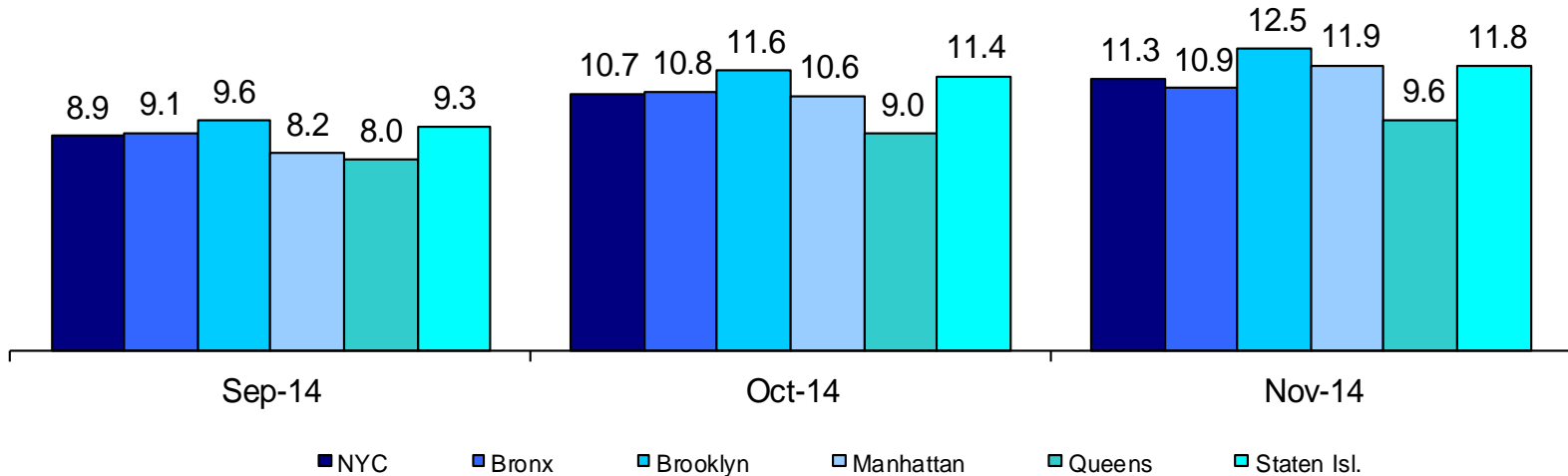
Average P/D Combined Caseload*

September 2013 – November 2013 & September 2014 – November 2014

2013



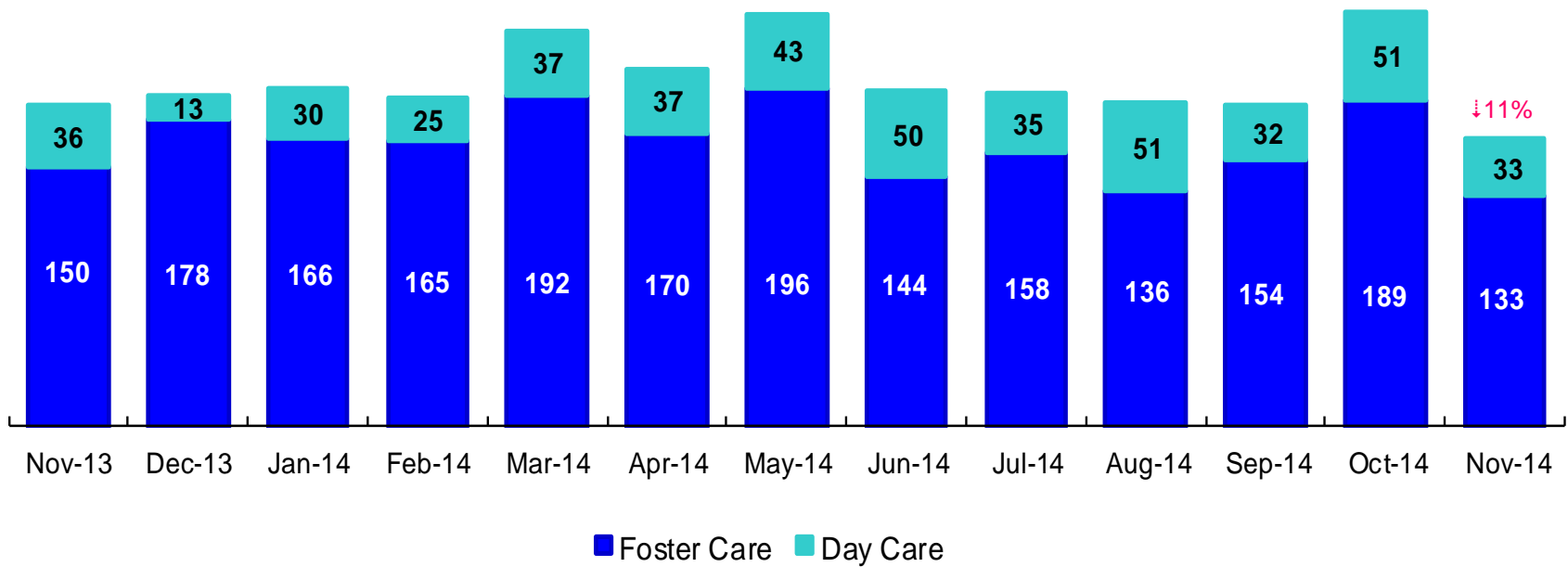
2014



* Caseloads are of protective/diagnostic caseworkers only and exclude the caseloads carried by Level I and Level II Supervisors. 6

OSI Investigations by Program

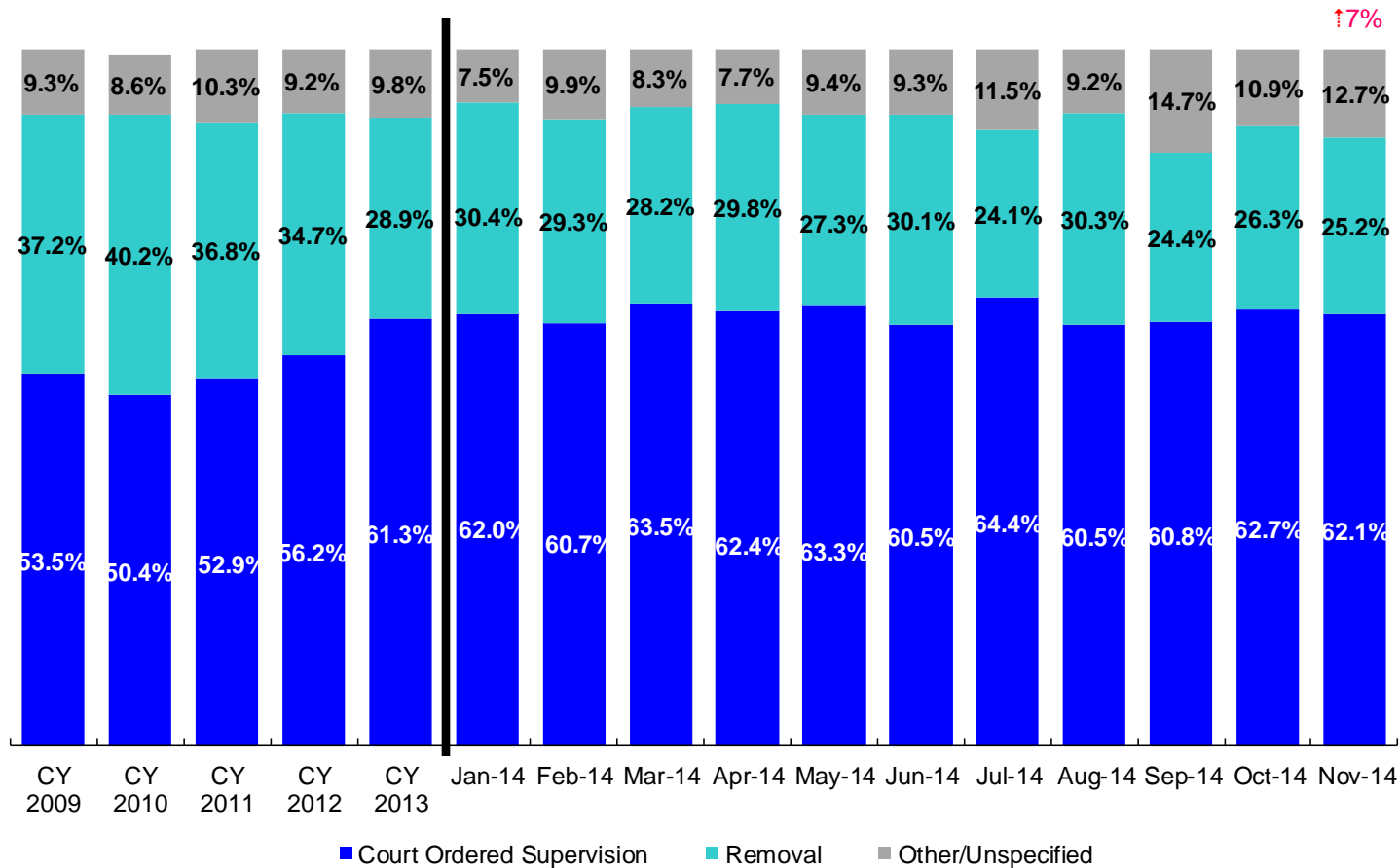
November 2013 – November 2014



	Nov 2013	Dec 2013	Jan 2014	Feb 2014	Mar 2014	Apr 2014	May 2014	Jun 2014	July 2014	Aug 2014	Sep 2014	Oct 2014	Nov 2014
Number of Investigations	186	191	196	190	229	207	239	194	193	187	186	240	166

Note: Percentage change is November 2013 vs. November 2014.

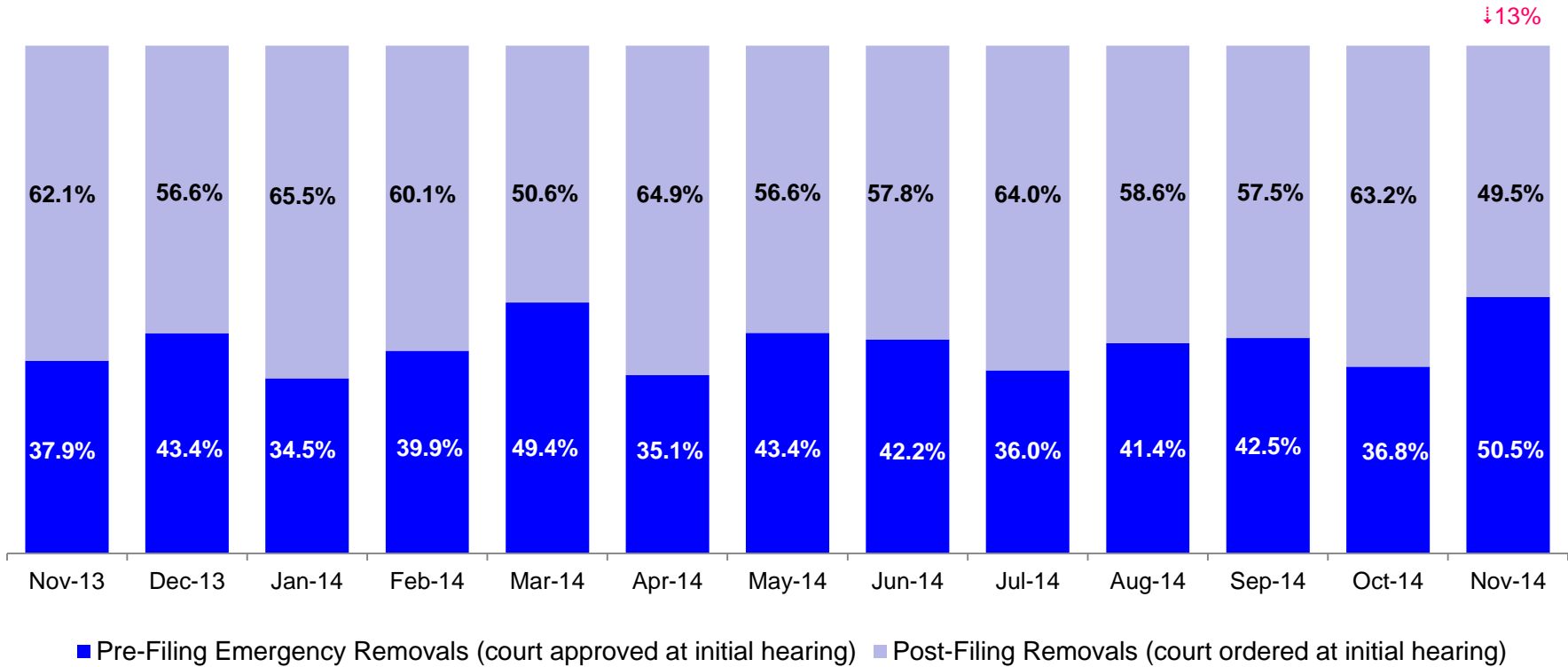
Article 10 Total Filings & Filing Outcomes, CY 2009 - CY 2013 and January – November 2014



	CY 2009	CY 2010	CY 2011	CY 2012	CY 2013	Jan 2014	Feb 2014	Mar 2014	Apr 2014	May 2014	Jun 2014	Jul 2014	Aug 2014	Sep 2014	Oct 2014	Nov 2014
Art.10 Filings	11,568	10,093	9,596	8,913	9,318	743	828	905	801	978	826	713	749	733	877	771

Notes: 1) The category “Other/Unspecified” includes released with no supervision, no order issued and no outcome specified. Outcomes of cases heard the next day are not captured in this report. 2) Percentage change is November 2013 vs. November 2014.

Article 10 Filing Removals, November 2013 – November 2014



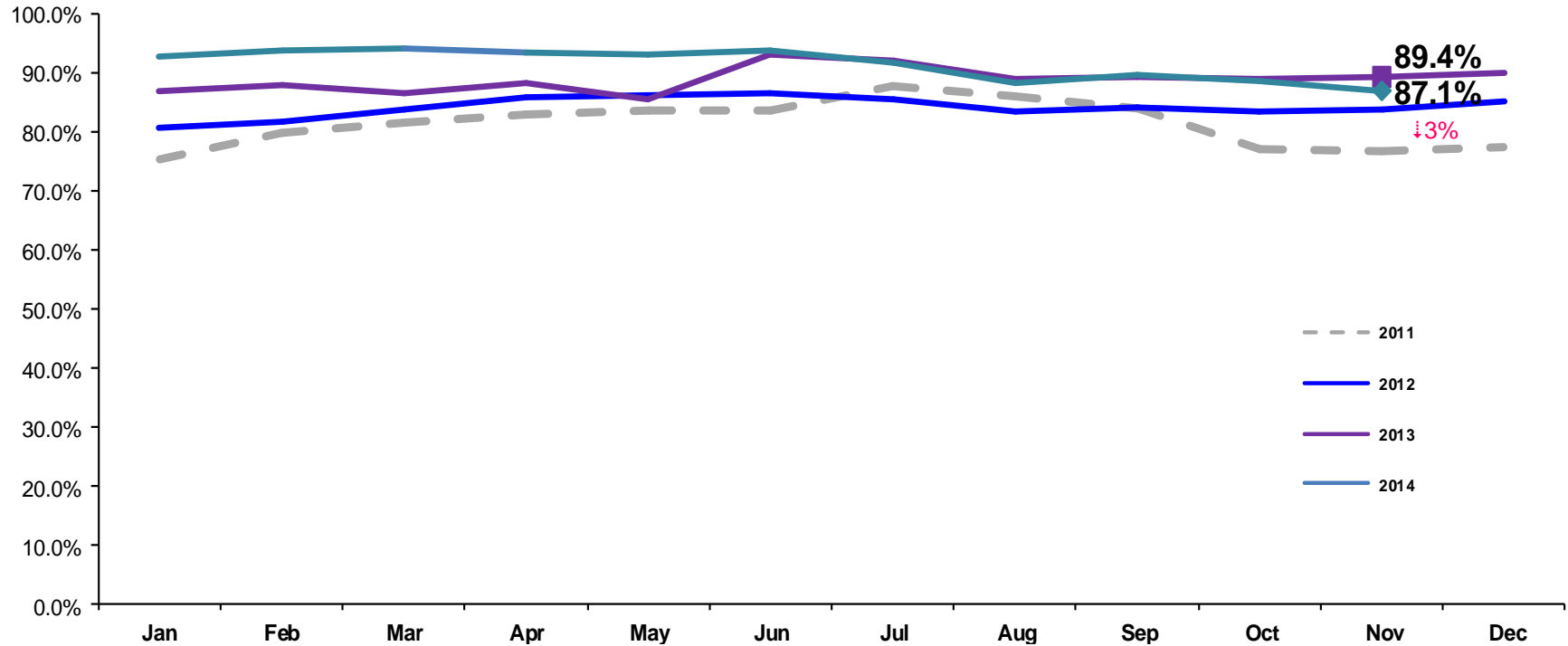
	Nov 2013	Dec 2013	Jan 2014	Feb 2014	Mar 2014	Apr 2014	May 2014	Jun 2014	Jul 2014	Aug 2014	Sep 2014	Oct 2014	Nov 2014
Number of Removals	224	212	226	243	255	239	267	249	172	227	179	231	194

Note: Percentage change is November 2013 vs. November 2014.

PPRS Utilization Rate

January 2011 – November 2014 (End of Month)

General Preventive

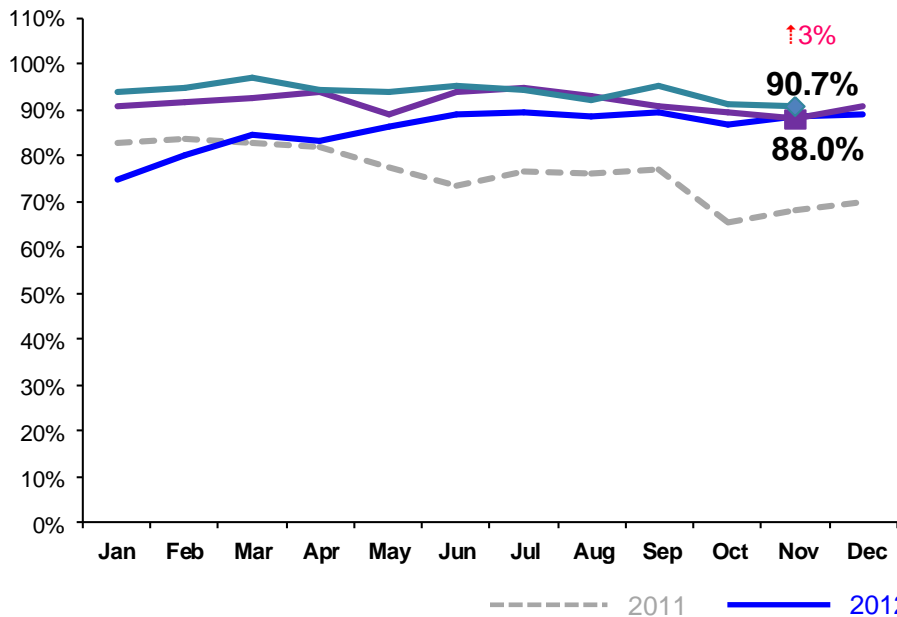


Notes: 1) Beacons programs are included in the GP utilization rates. 2) During February - June 2011 GP rates were adjusted by excluding programs in the process of being closed. GP rates were also adjusted during July – September 2011 by excluding newly opened programs. 3) During June-October 2013 GP programs in the process of converting to EBMs were excluded from the GP utilization statistics. 4) Percentage change is November 2013 vs. November 2014.

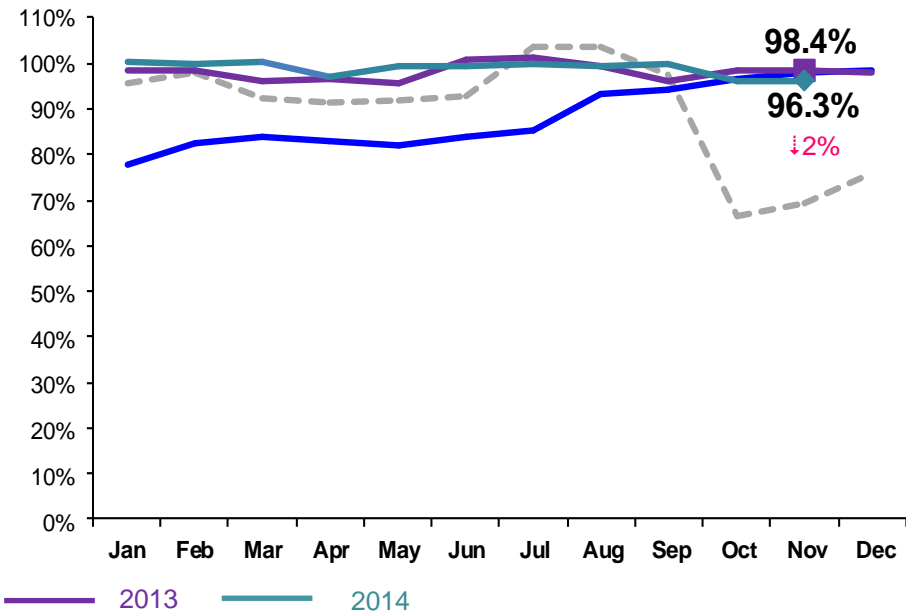
PPRS Utilization Rate

January 2011 – November 2014 (End of Month)

Family Rehabilitation Program/Family Treatment Rehabilitation



Medically Fragile

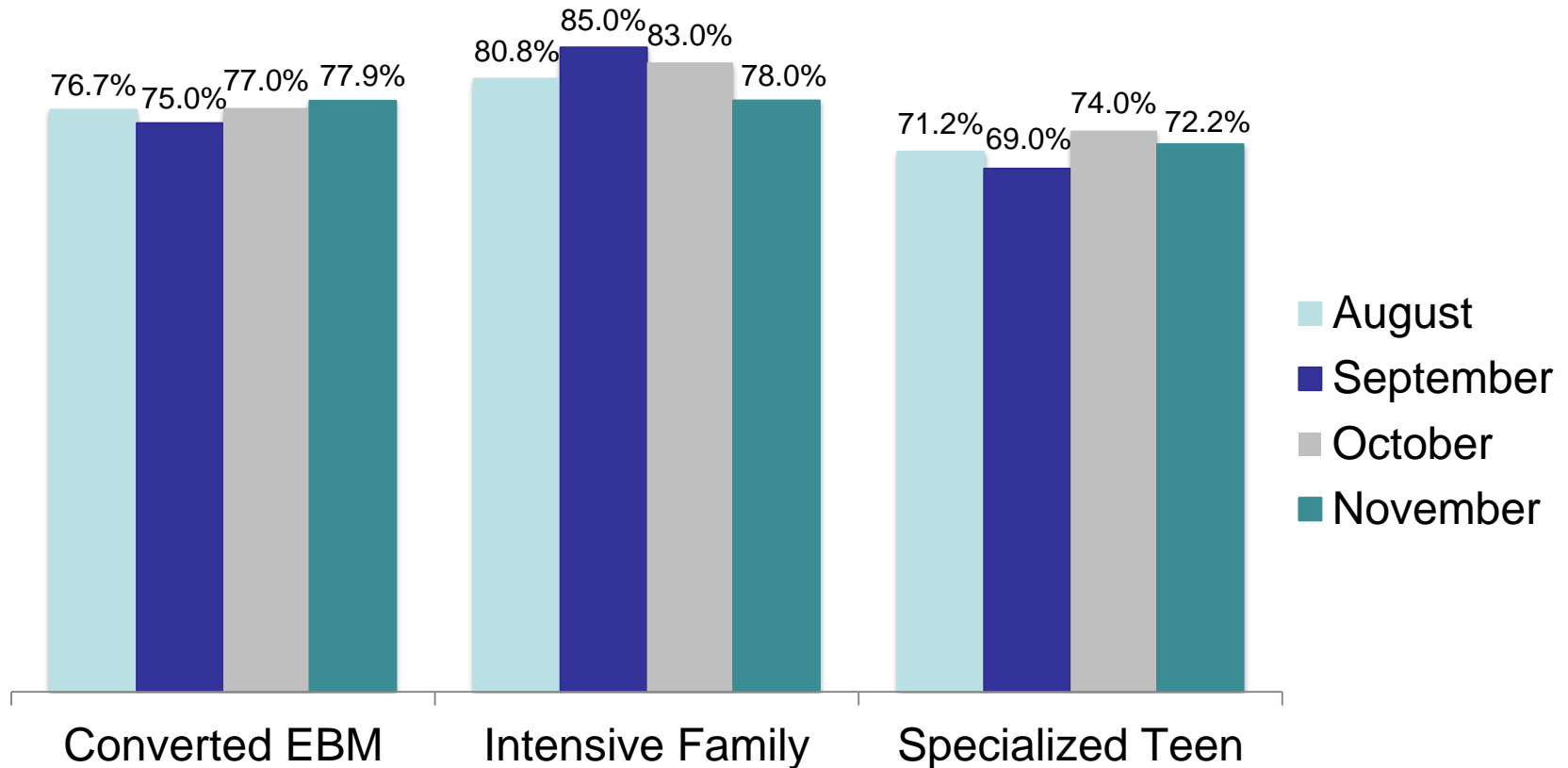


Notes: 1) During February - June 2011 FRP rates were adjusted by excluding programs in the process of being closed. FT/R rates were also adjusted during July – September 2011 by excluding newly opened programs. As of October 2011 all FT/R programs are included in the FT/R utilization rates. 2) Beginning July 2011 Family Treatment Rehabilitation programs replaced the Family Rehabilitation programs. 3) Beginning December 2011 the NYF Family Services for deaf Children and Adults program is no longer included in the medically fragile utilization rate. 4) During June -October 2013 FTR programs in the process of converting to EBMs were excluded from the FTR utilization statistics. 5) Percentage change is November 2013 vs. November 2014.

PPRS Utilization Rate

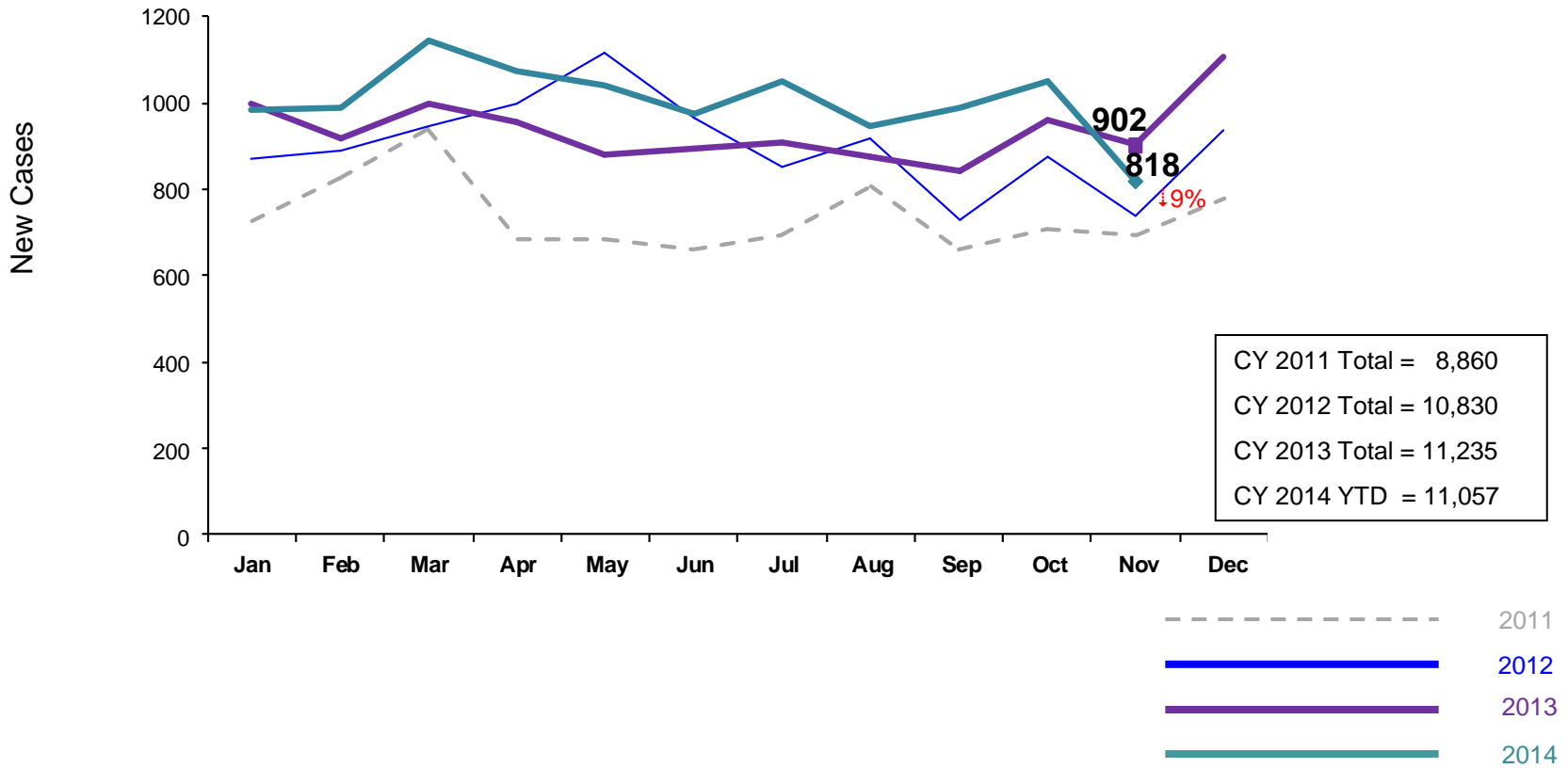
August – November 2014 (End of Month)

Converted EBM, Intensive Family and Specialized Teen



New Preventive Cases*

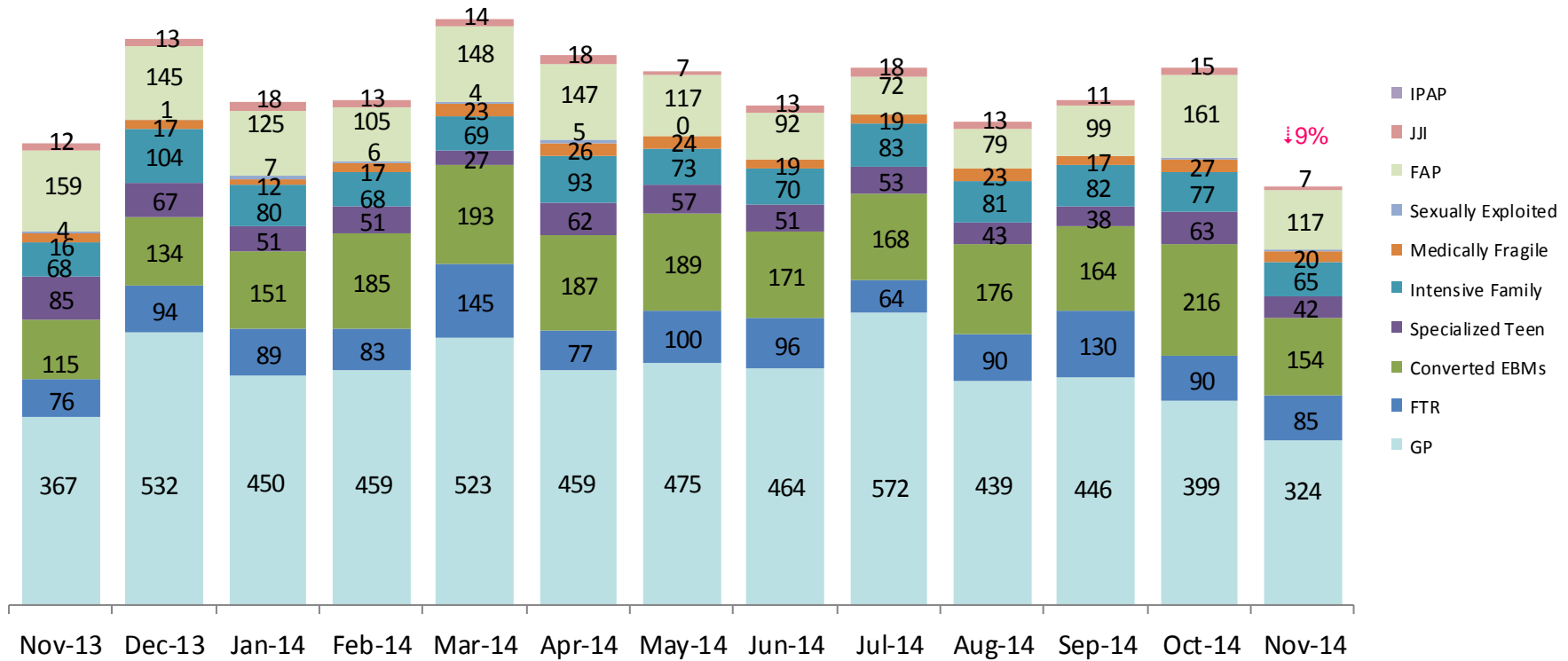
January 2011 – November 2014



*Notes: 1) New preventive cases do not include cases transferred from one preventive program to another. 2) Percentage change is November 2013 vs. November 2014. 3) See Pages 36 and 37 of the Appendix for supporting data.

New Preventive Cases* by Program Type

November 2013 – November 2014

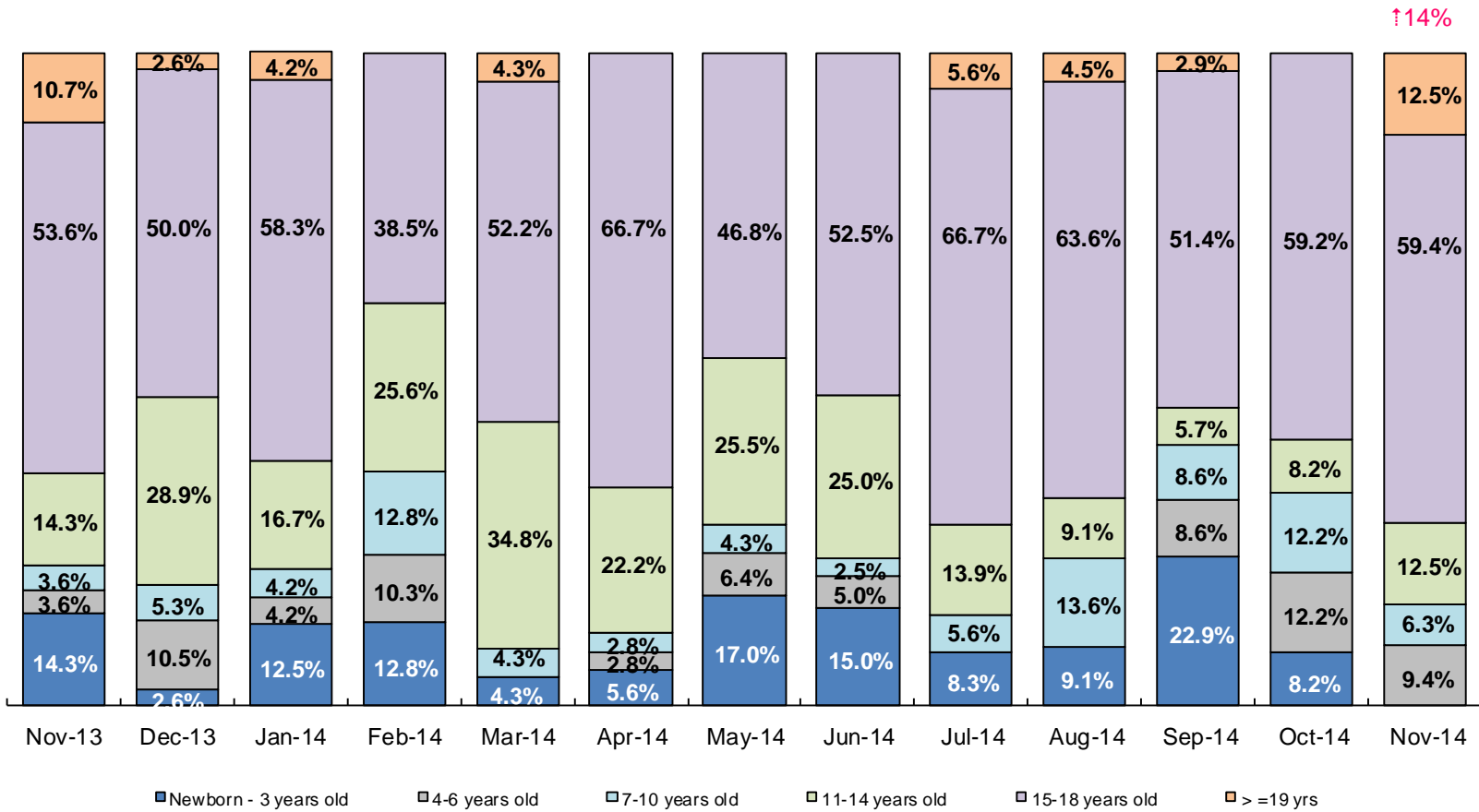


	Nov 2013	Dec 2013	Jan 2014	Feb 2014	Mar 2014	Apr 2014	May 2014	Jun 2014	Jul 2014	Aug 2014	Sep 2014	Oct 2014	Nov 2014
Number of New Preventive Cases	902	1,107	983	987	1,146	1,074	1,042	976	1,050	944	987	1,050	818

Notes: 1) New preventive cases do not include cases transferred from one preventive program to another. 2) Percentage change is November 2013 vs. November 2014.

Children's Center Population by Age

November 2013 – November 2014

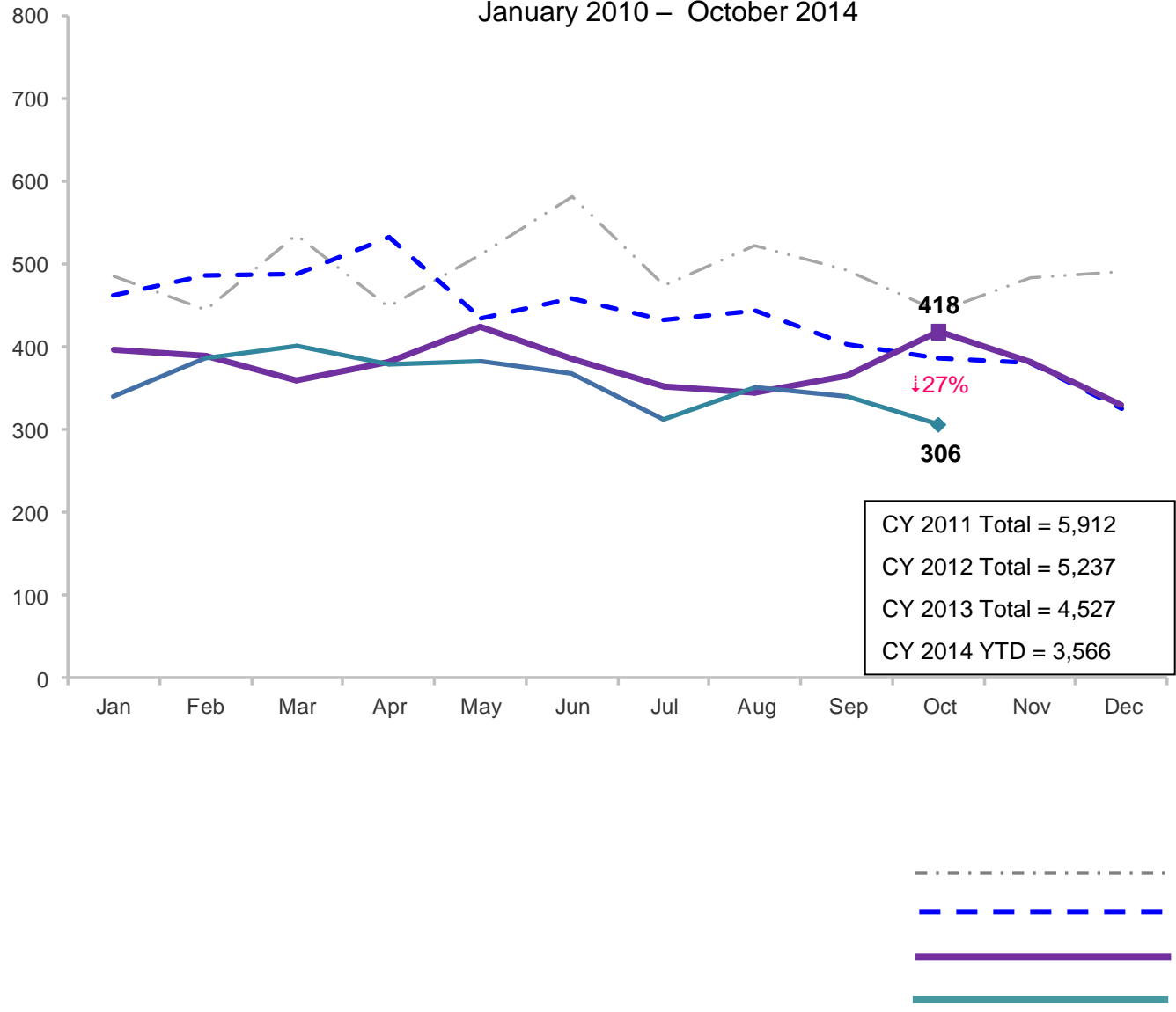


	Nov 2013	Dec 2013	Jan 2014	Feb 2014	Mar 2014	Apr 2014	May 2014	Jun 2014	Jul 2014	Aug 2014	Sep 2014	Oct 2014	Nov 2014
Number of Children	28	38	24	39	23	36	47	40	36	22	35	49	32

Note: Percentage change is November 2013 vs. November 2014.

Total Monthly Placements

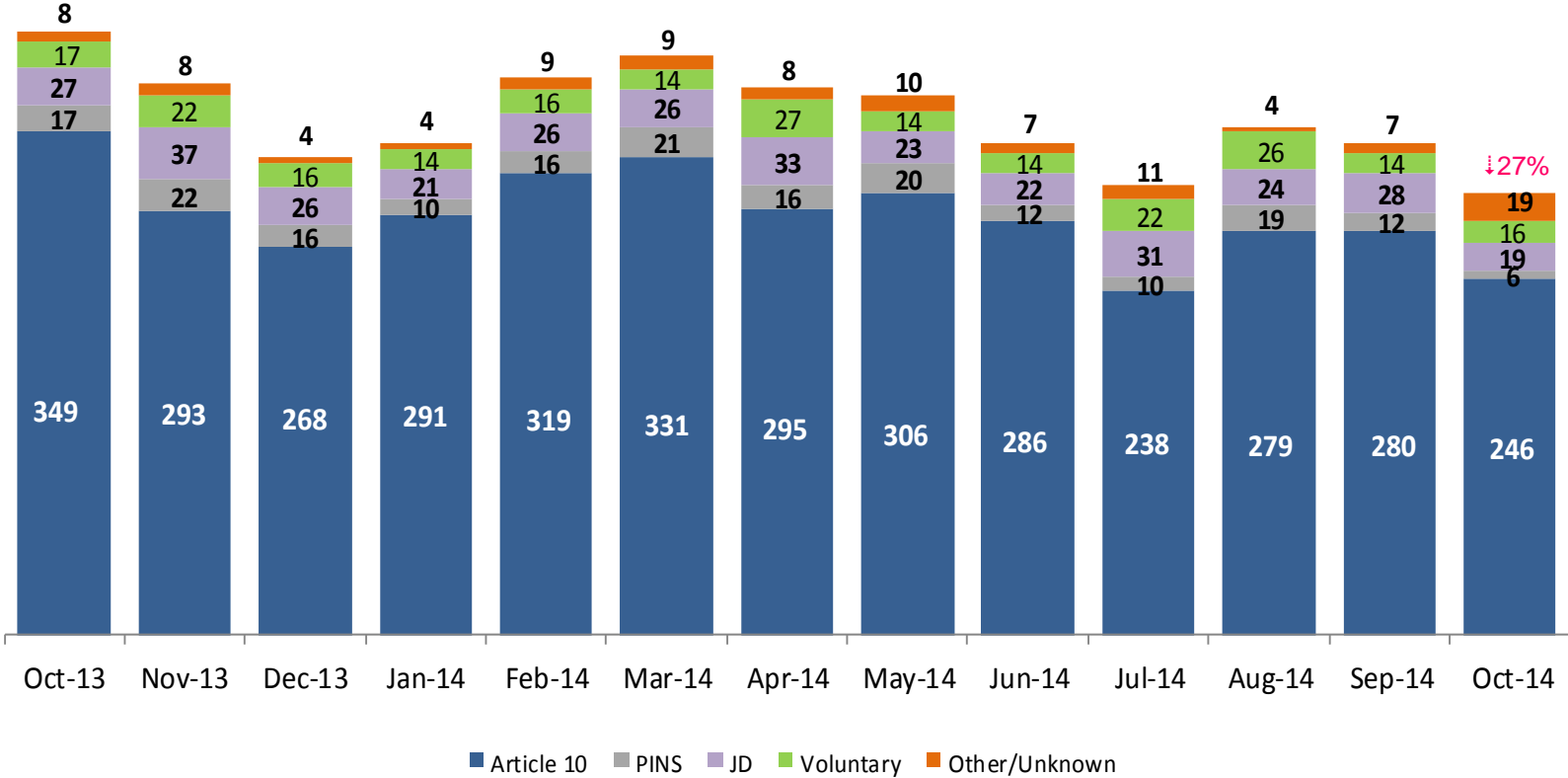
January 2010 – October 2014



Note: Percentage change is October 2013 vs. October 2014.

Reason for Initial Placements into Foster Care

October 2013 – October 2014

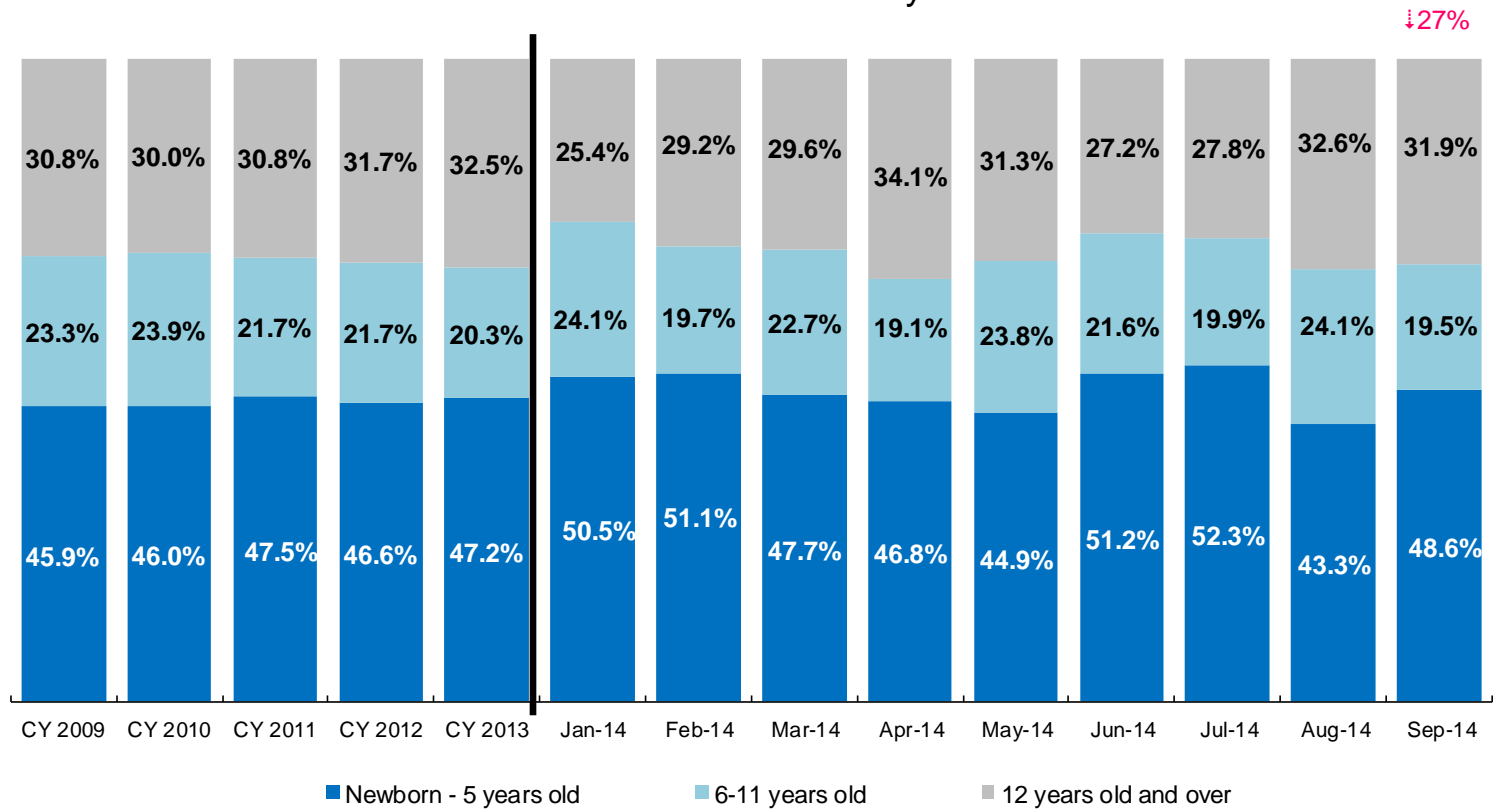


	Oct 2013	Nov 2013	Dec 2013	Jan 2014	Feb 2014	Mar 2014	April 2014	May 2014	Jun 2014	Jul 2014	Aug 2014	Sep 2014	Oct 2014
Number of Placements	418	382	330	340	386	401	379	382	367	312	352	341	306

Note: Percentage change is October 2013 vs. October 2014.

Placements* by Age

CY 2009 – CY 2013 and January – October 2014



	CY 2008	CY 2009	CY 2010	CY 2011	CY 2012	CY 2013	Jan 2014	Feb 2014	Mar 2014	Apr 2014	May 2014	Jun 2014	Jul 2014	Aug 2014	Sep 2014	Oct 2014
Placements	4,764	5,657	5,842	4,941	4,823	4,170	319	360	375	346	361	342	281	328	313	287

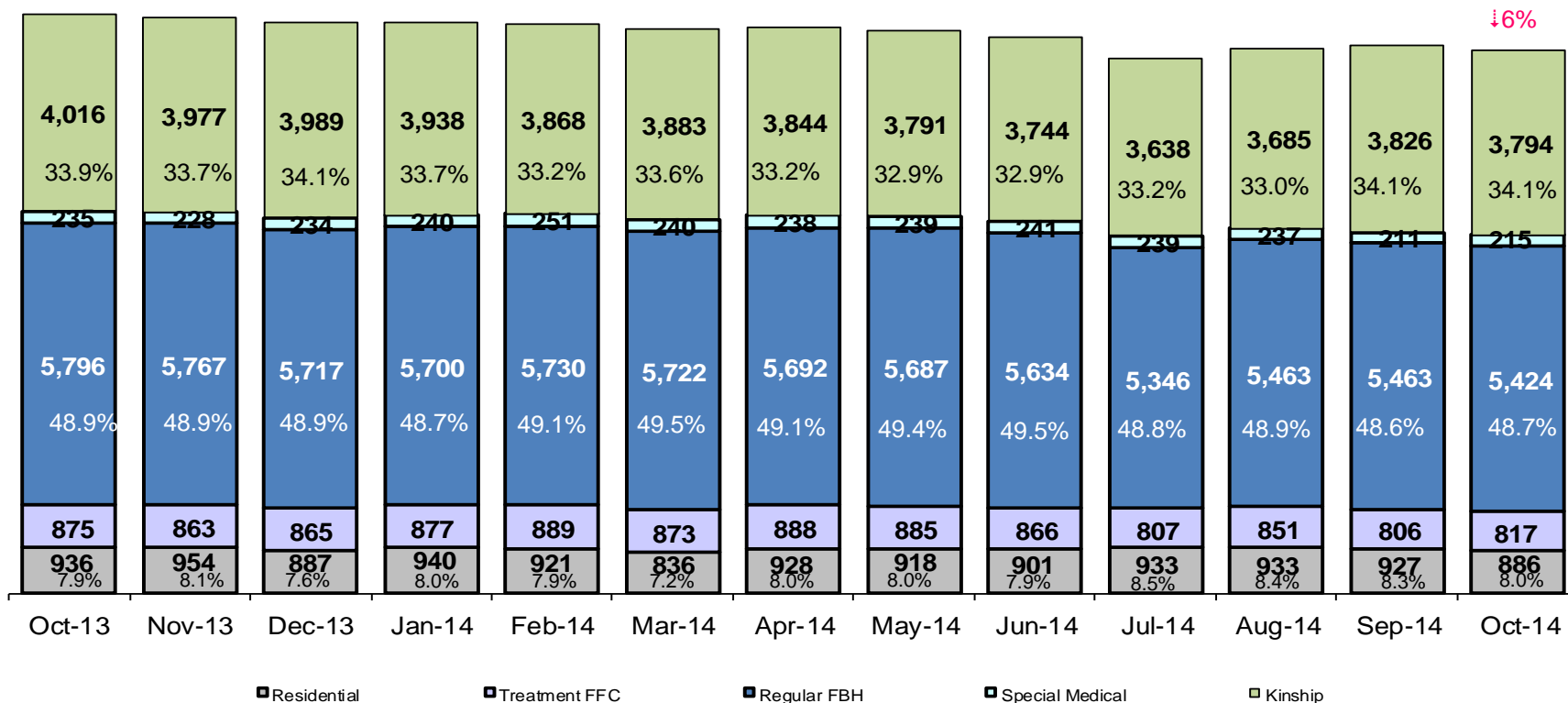
↓27%

*Excludes JD placements.

Note: Percentage change is October 2013 vs. October 2014.

Children in Foster Care*

October 2013 – October 2014 (end of month)

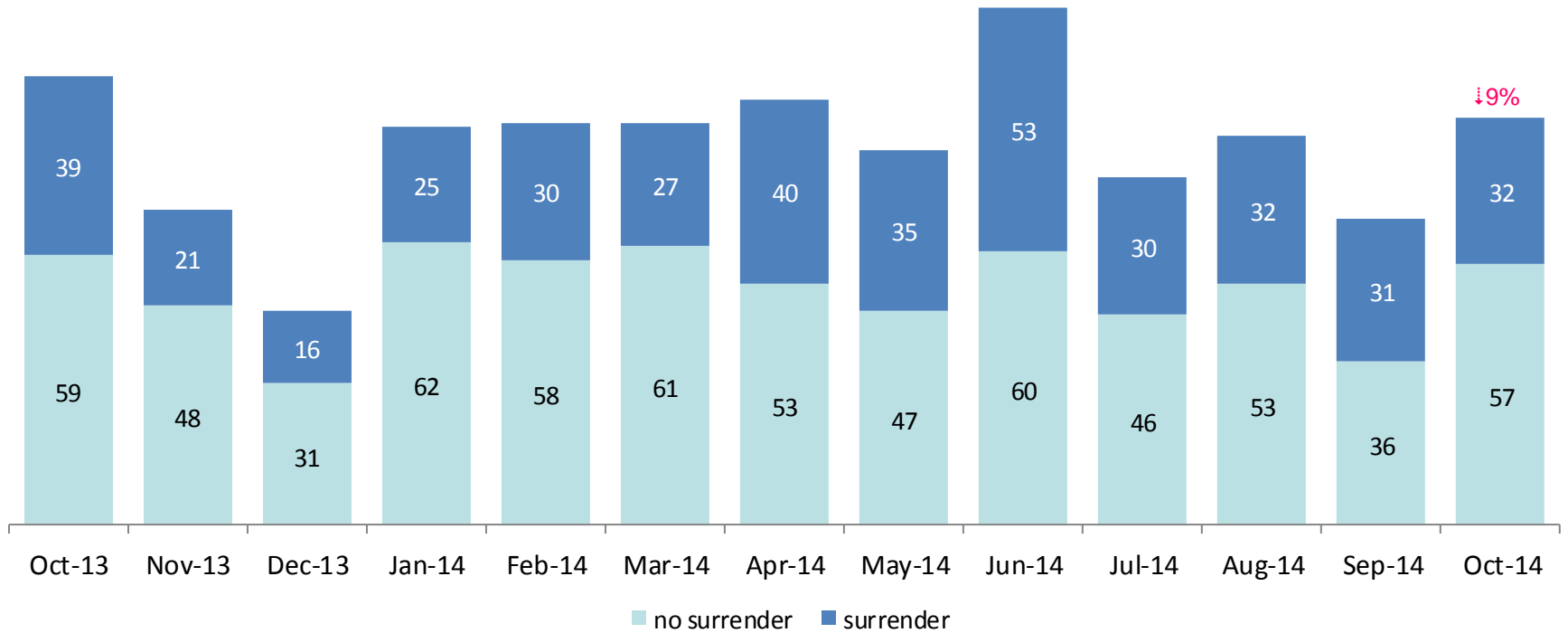


	Oct 2013	Nov 2013	Dec 2013	Jan 2014	Feb 2014	Mar 2014	Apr 2014	May 2014	Jun 2014	Jul 2014	Aug 2014	Sep 2014	Oct 2014
Number in Foster Care	11,858	11,789	11,692	11,695	11,659	11,554	11,590	11,520	11,386	10,963	11,169	11,233	11,136

*Excludes JD placements and includes approximately 400 young children who are living in foster homes or residential care facilities with their mothers who are in foster care (8D children).

Note: Percentage change is October 2013 vs. October 2014.

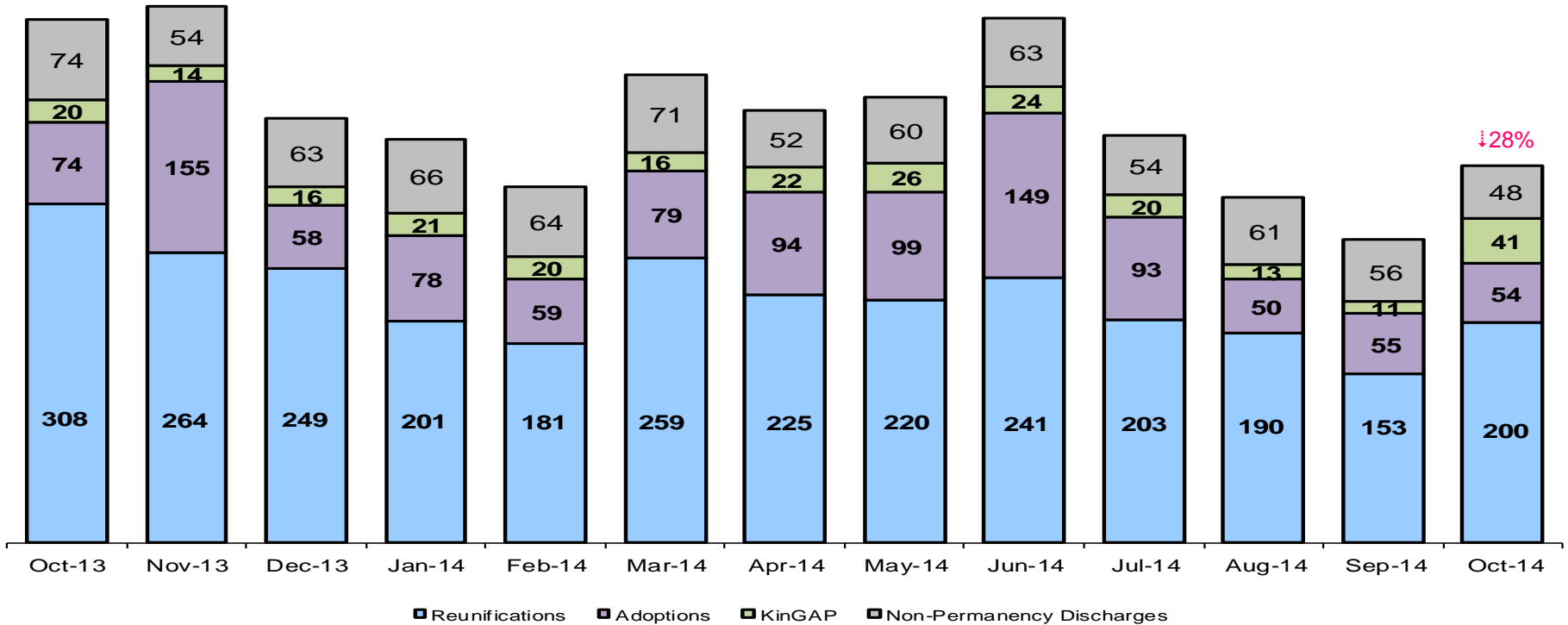
Children Freed for Adoption, Surrender by at Least One Parent October 2013 – October 2014



	Oct 2013	Nov 2013	Dec 2013	Jan 2014	Feb 2014	Mar 2014	Apr 2014	May 2014	Jun 2014	Jul 2014	Aug 2014	Sep 2014	Oct 2014
Number Freed for Adoption	98	69	47	87	88	88	93	82	113	76	85	67	89

Note: Percentage change is for the number of children freed for adoption during October 2013 vs. October 2014.

Permanency and Non-Permanency* Discharges from Foster Care** October 2013 – October 2014



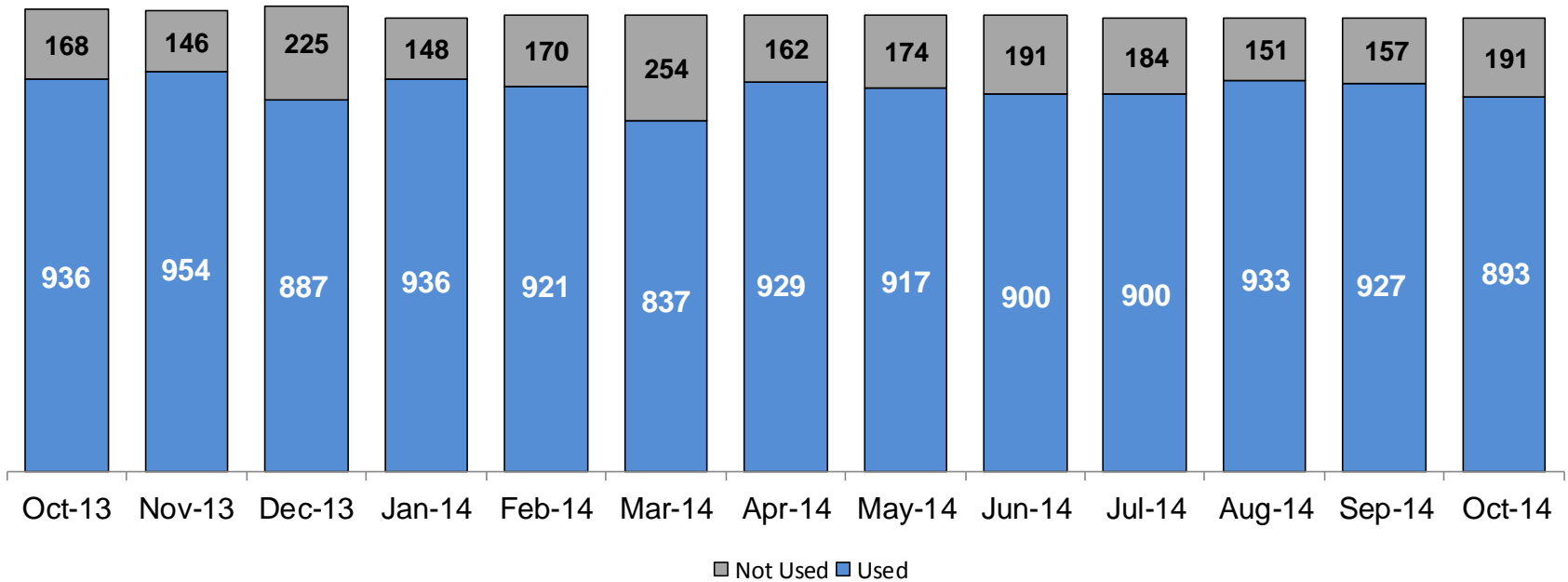
	Oct 2013	Nov 2013	Dec 2013	Jan 2014	Feb 2014	Mar 2014	Apr 2014	May 2014	Jun 2014	Jul 2014	Aug 2014	Sep 2014	Oct 2014
Number of Discharges	476	487	386	366	324	425	393	405	477	370	314	275	343

*Non-permanency discharges include AWOL, APPLA, other discharge destinations such as mental institutions and correctional facilities and discharges with unspecified destinations.

**Excludes discharges of youth who were in JD status at any time during their foster care spell.

Note: Percentage change is October 2013 vs. October 2014.

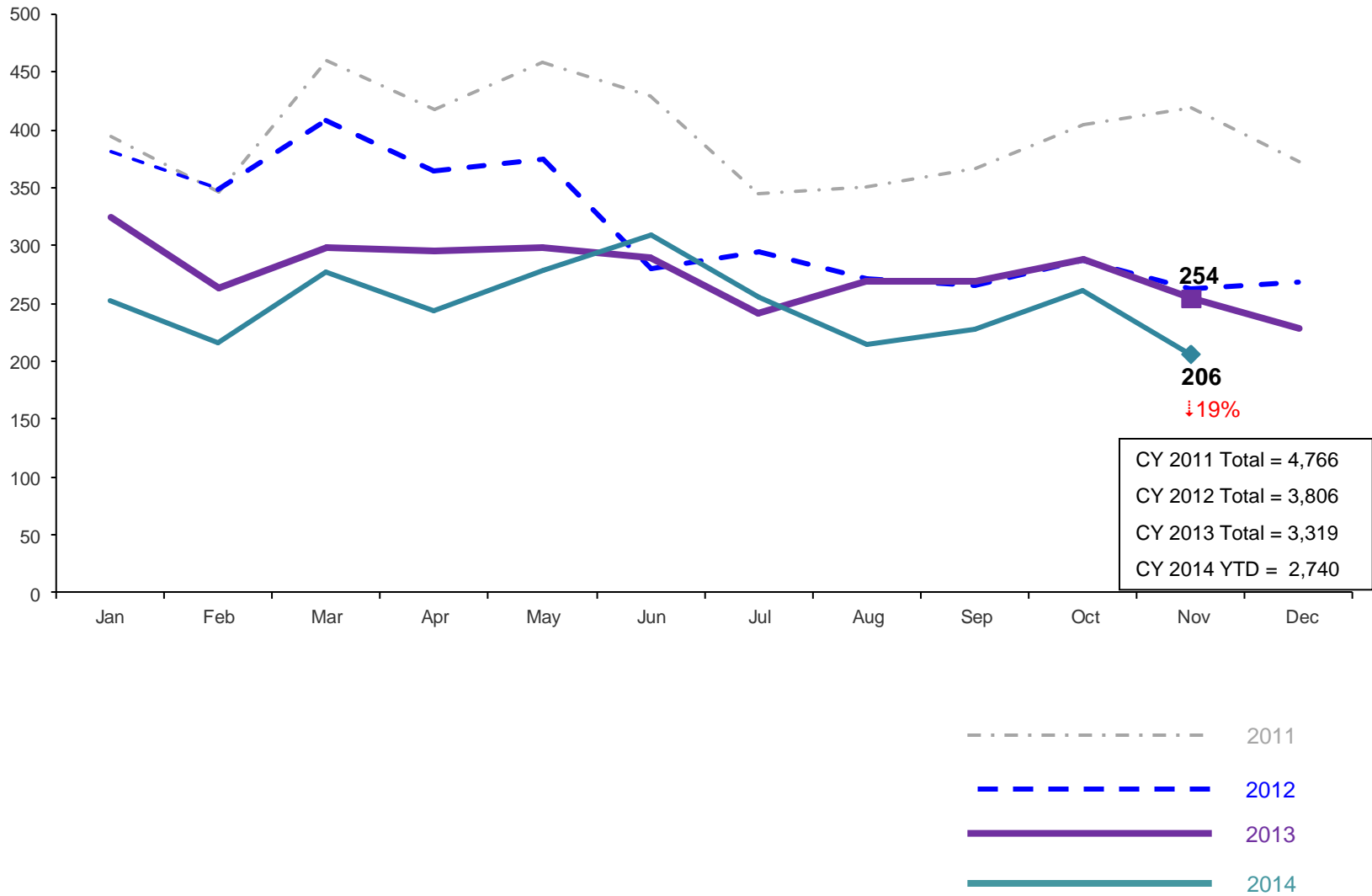
Residential Care Capacity and Utilization, October 2013 – October 2014



	Sep 2013	Oct 2013	Nov 2013	Dec 2013	Jan 2014	Feb 2014	Mar 2014	Apr 2014	May 2014	Jun 2014	Jul 2014	Aug 2014	Sep 2014	Oct 2014
Capacity	1,104	1,104	1,100	1,112	1,084	1,091	1,091	1,091	1,091	1,091	1,084	1,084	1,084	1,084

Total Monthly Admissions to Detention

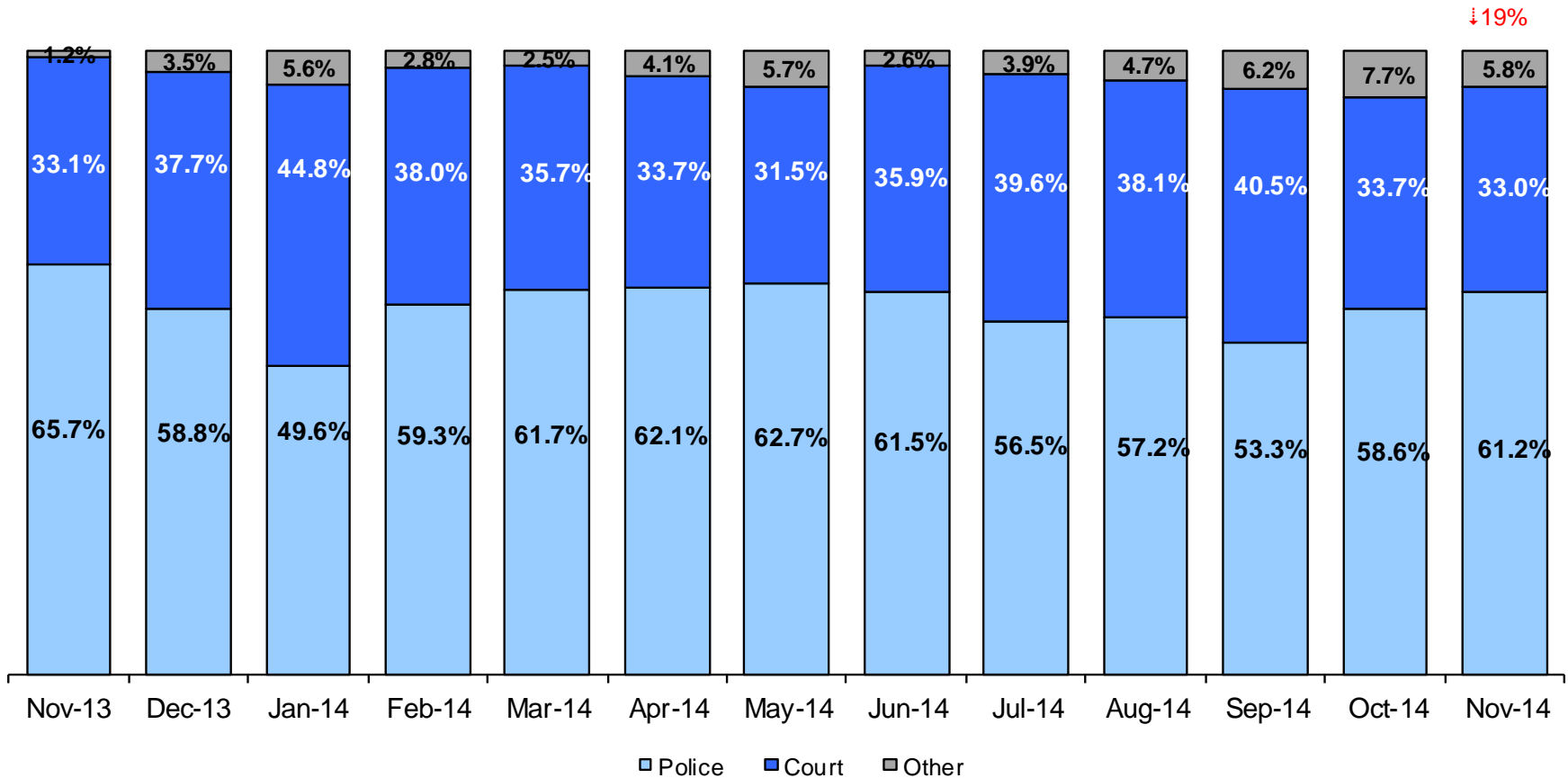
January 2011 – November 2014 (Monthly Total)



Note: Percentage change is November 2013 vs. November 2014.

Admit Authority on Admissions

November 2013 - November 2014 (Monthly Total)



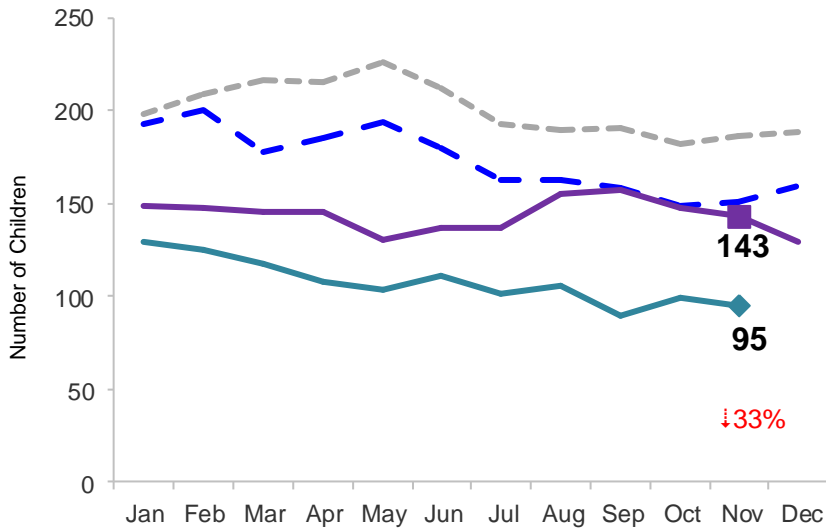
	Nov 2013	Dec 2013	Jan 2014	Feb 2014	Mar 2014	Apr 2014	May 2014	Jun 2014	Jul 2014	Aug 2014	Sep 2014	Oct 2014	Nov 2014
Number of Admissions	254	228	252	216	277	243	279	309	255	215	227	261	206

Notes: 1) Other Admit Authority includes the Sheriff Department, Department of Corrections and ACS. 2) Percentage change is November 2013 vs. November 2014.

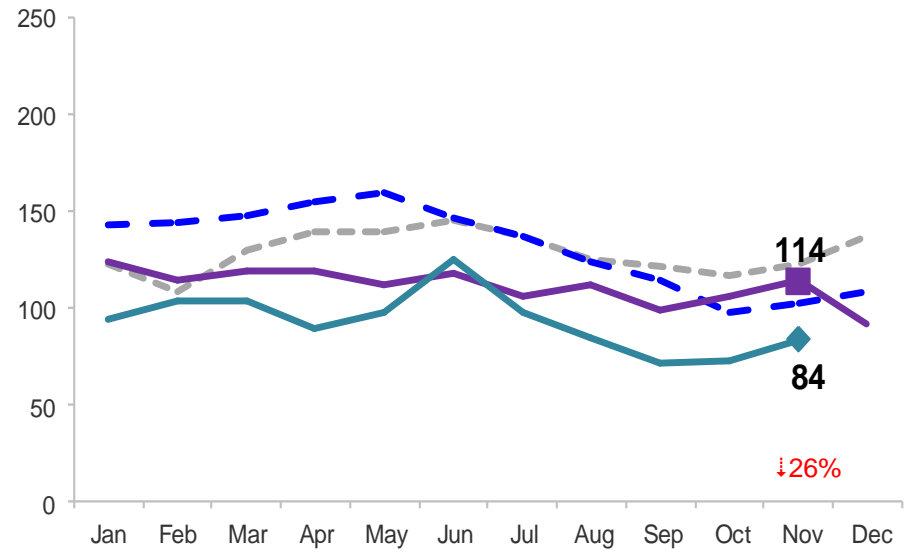
Monthly Average Daily Population

January 2011 – November 2014

Secure Detention



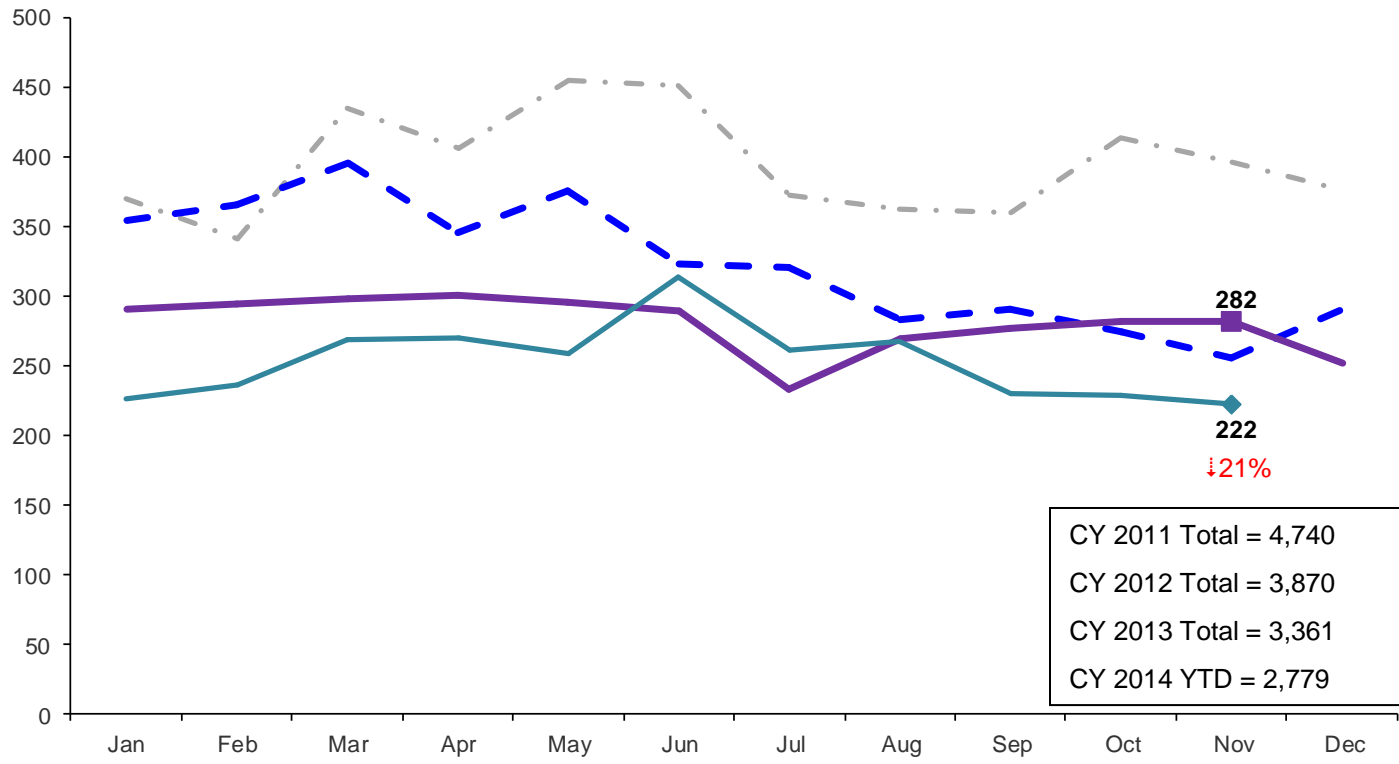
Non-Secure Detention



Note: Percentage change is November 2013 vs. November 2014.

Total Monthly Releases from Detention

January 2011 – November 2014 (Monthly Total)



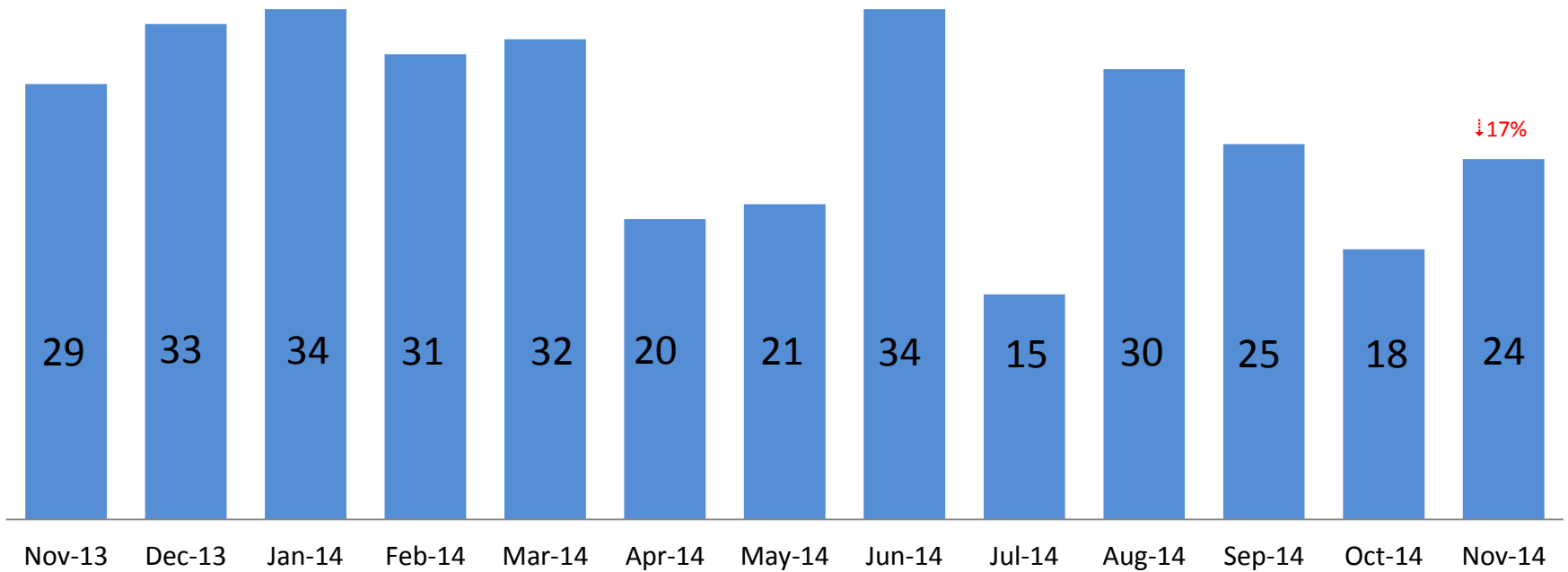
CY 2011 Total = 4,740
 CY 2012 Total = 3,870
 CY 2013 Total = 3,361
 CY 2014 YTD = 2,779



Note: Percentage change is November 2013 vs. November 2014.

ACS NSP Intakes

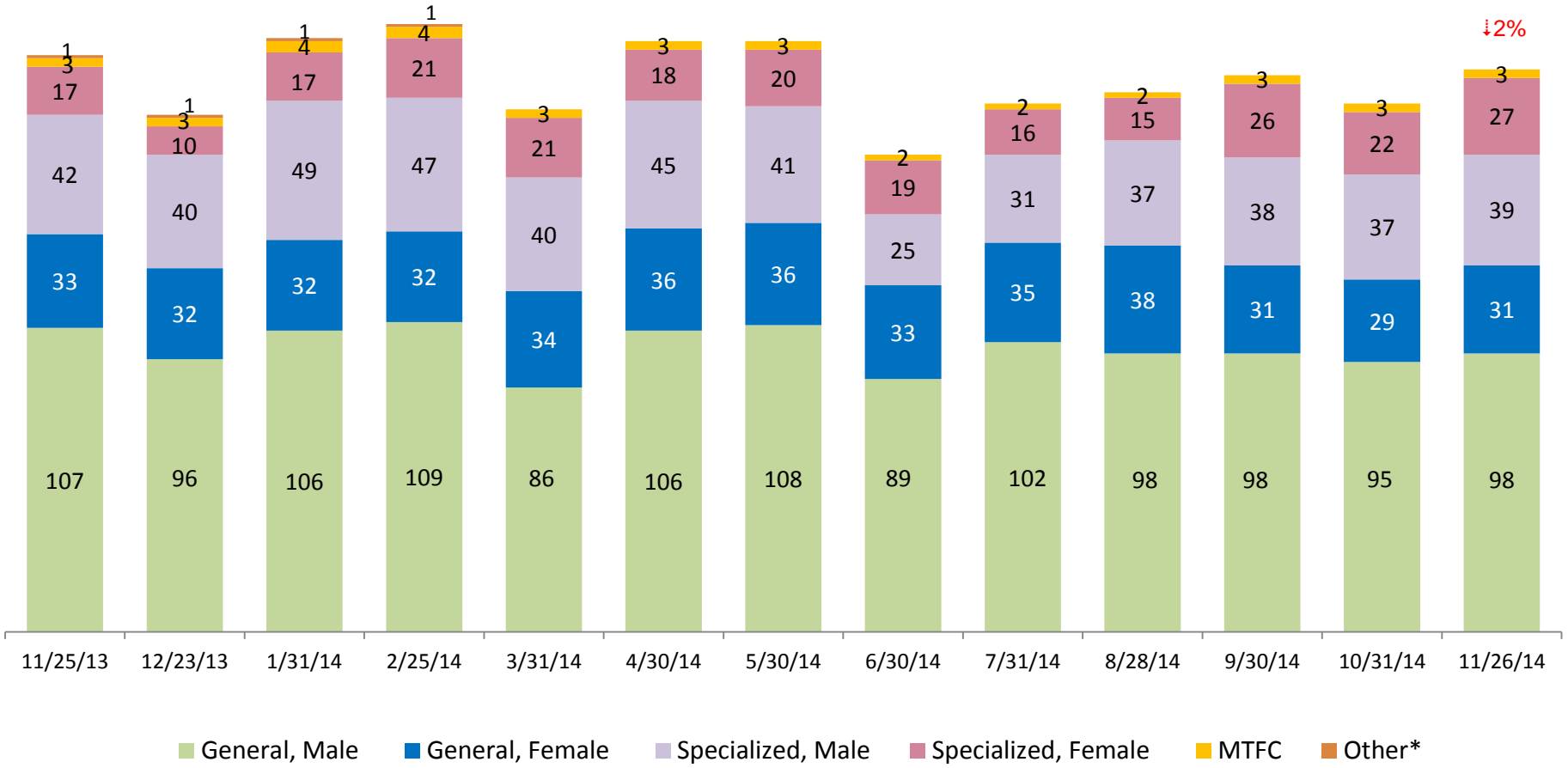
November 2013 – November 2014



Note: Percentage change is November 2013 vs. November 2014.

ACS Non-Secure Placement, in 24 hour Care

November 2013 – November 2014 (Point-in-Time)

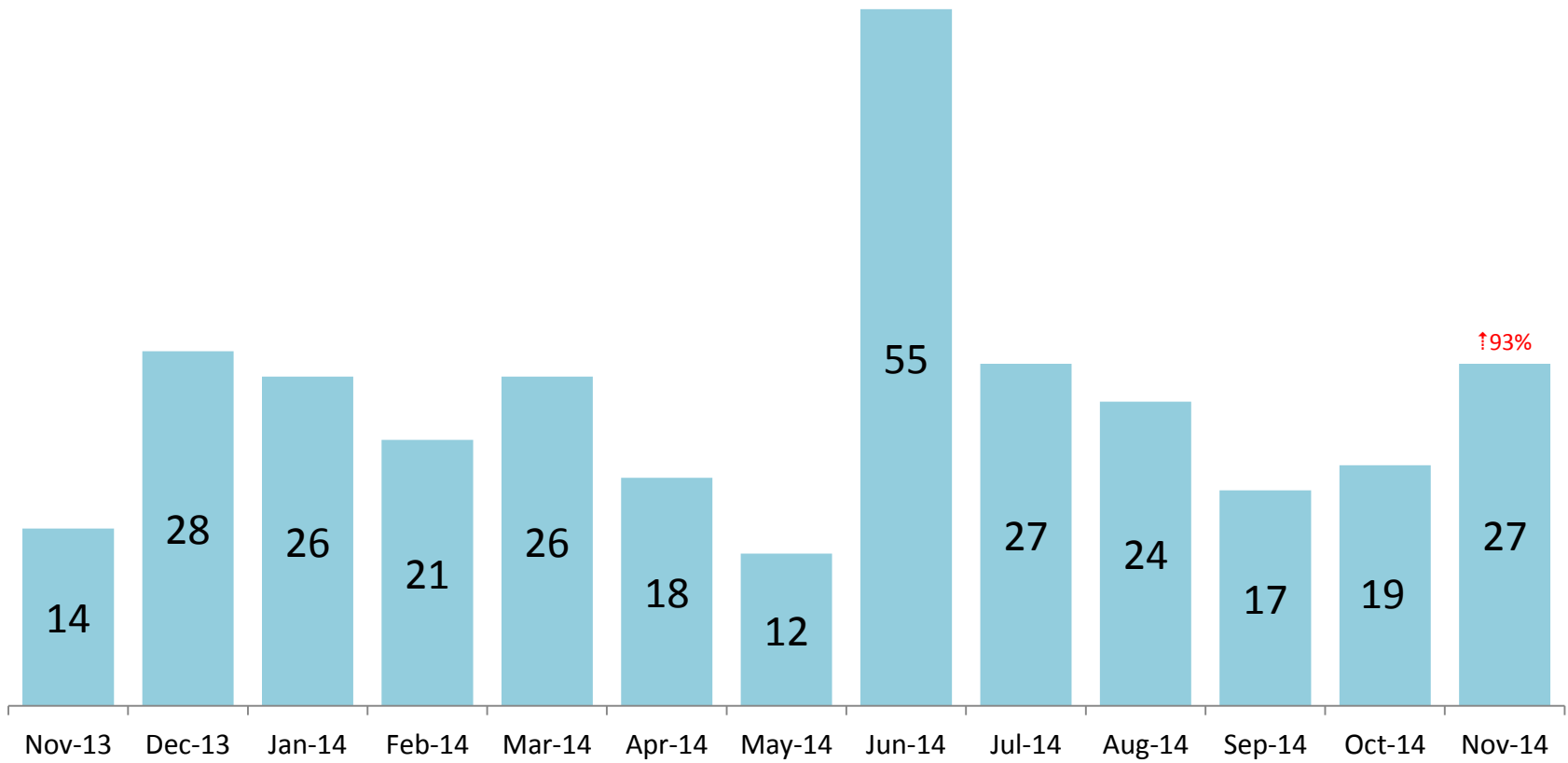


	11/25/13	12/23/13	1/31/14	2/25/14	3/31/14	4/30/14	5/30/14	6/30/14	7/31/14	8/28/14	9/30/14	10/31/14	11/26/14
Number in Placement	203	182	209	214	184	208	208	168	186	190	196	186	198

*Other includes NYC youth in voluntary placements with Lincoln Hall, MercyFirst and Graham Windham.

Note: Percentage change is November 2013 vs. November 2014.

Releases from NSP to Aftercare November 2013 – November 2014



Note: Percentage change is November 2013 vs. November 2014.

Appendix

Figure 1: SCR Intakes by Borough, SEP 13 – NOV 13 and SEP 14 – NOV 14

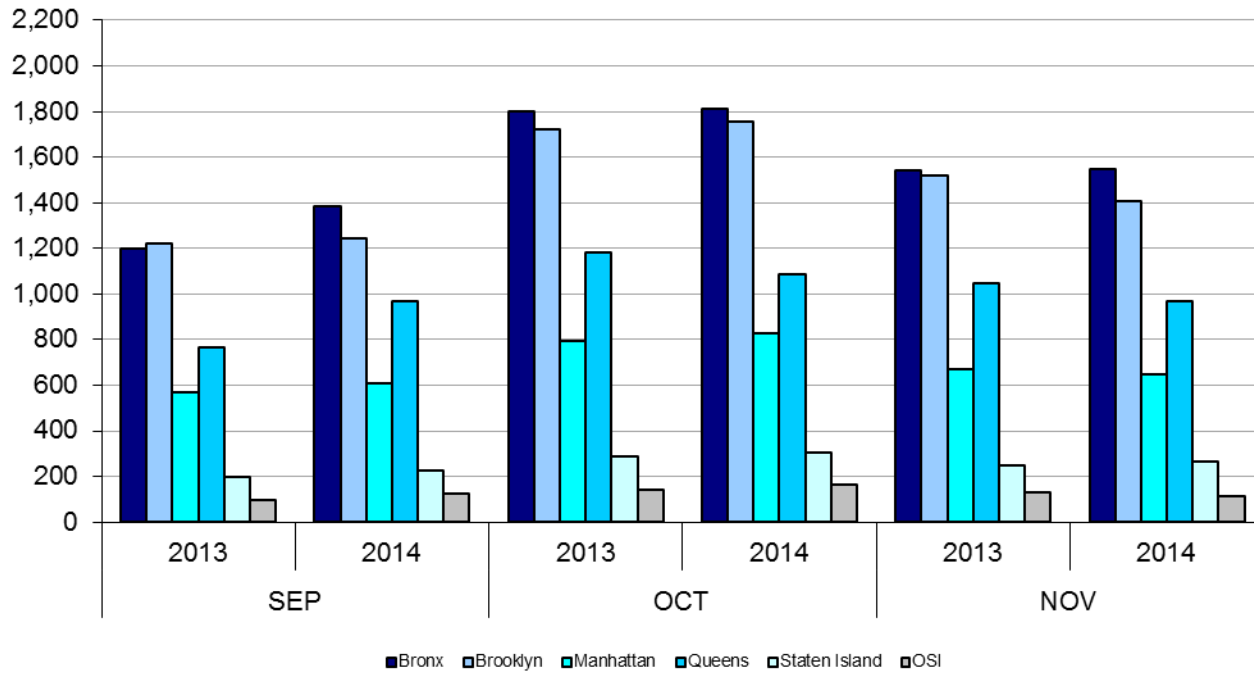


TABLE 1 - SCR Intake Changes by Borough, SEP 13 – NOV 13 and SEP 14 – NOV 14

Month	Year	Bronx	Brooklyn	Manhattan	Queens	Staten Island	OSI	Other	Total
SEP	2013	1,197	1,220	569	763	198	95	118	4,160
	2014	1,386	1,242	610	967	224	123	131	4,683
	% Change	15.8%	1.8%	7.2%	26.7%	13.1%	29.5%	11.0%	12.6%
OCT	2013	1,802	1,721	796	1,183	286	141	147	6,076
	2014	1,814	1,753	826	1,088	305	166	165	6,117
	% Change	0.7%	1.9%	3.8%	-8.0%	6.6%	17.7%	12.2%	0.7%
NOV	2013	1,543	1,520	672	1,047	247	131	132	5,292
	2014	1,548	1,409	647	971	266	114	90	5,045
	% Change	0.3%	-7.3%	-3.7%	-7.3%	7.7%	-13.0%	-31.8%	-4.7%
Total	2013	4,542	4,461	2,037	2,993	731	367	397	15,528
	2014	4,748	4,404	2,083	3,026	795	403	386	15,845
	% Change	4.5%	-1.3%	2.3%	1.1%	8.8%	9.8%	-2.8%	2.0%

Figure 2: Citywide SCR Intakes by Reporter Group, SEP 13 – NOV 13 and SEP 14 – NOV 14

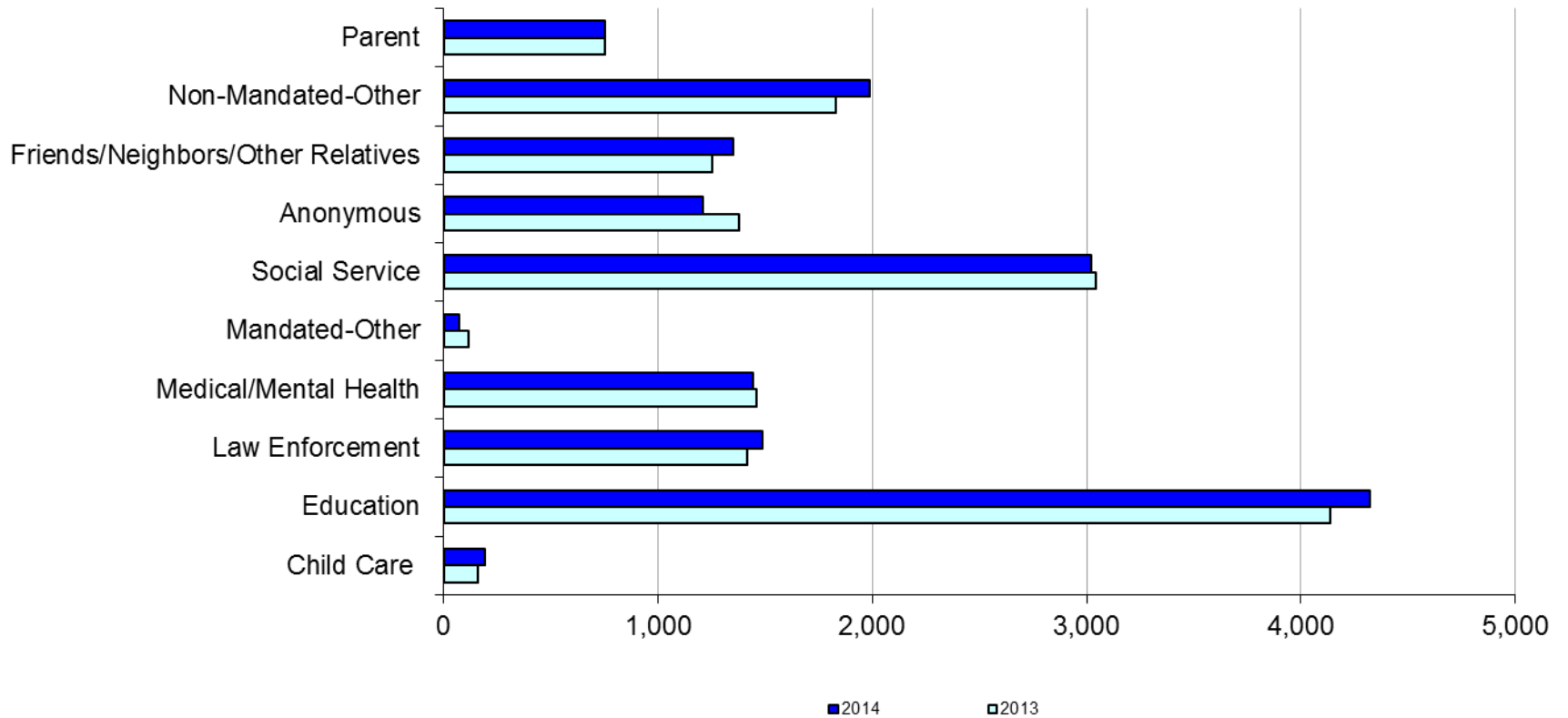
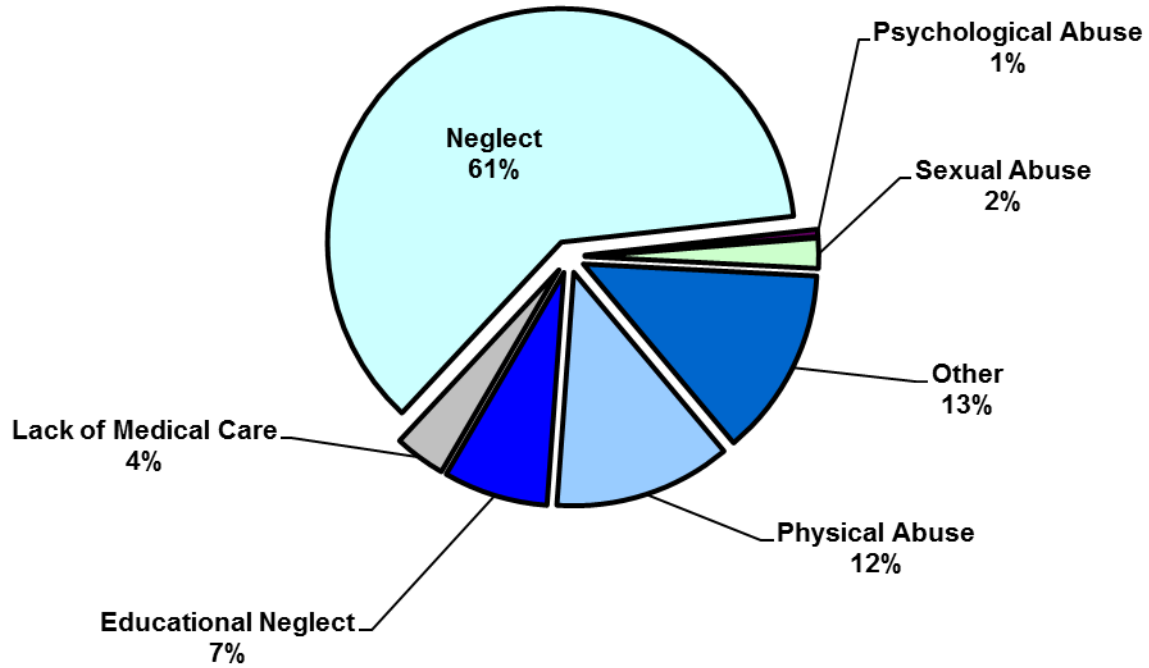


TABLE 2 - SCR Intakes by Reporter Group, SEP 13 – NOV 13 and SEP 14 – NOV 14

Year	Child Care/ Substitute Care Personnel	Educational Personnel	Law Enforcement	Medical/ Mental Health Personnel	Mandated- Other	Social Service Personnel	Anonymous	Friends/ Neighbors/ Other Relatives	Non- Mandated- Other	Parent	Foster Parent	Total
Bronx												
2013	36	1,263	362	435	28	937	353	374	554	202	0	4,544
2014	54	1,339	337	432	19	925	369	430	638	204	2	4,749
% Change	50.0%	6.0%	-6.9%	-0.7%	-32.1%	-1.3%	4.5%	15.0%	15.2%	1.0%	--	4.5%
Brooklyn												
2013	57	1,204	378	398	43	826	445	363	542	204	0	4,460
2014	49	1,277	454	353	20	775	351	389	544	189	1	4,402
% Change	-14.0%	6.1%	20.1%	-11.3%	-53.5%	-6.2%	-21.1%	7.2%	0.4%	-7.4%	--	-1.3%
Manhattan												
2013	18	456	257	198	15	443	154	147	271	74	2	2,035
2014	34	432	268	217	16	425	144	175	284	88	0	2,083
% Change	88.9%	-5.3%	4.3%	9.6%	6.7%	-4.1%	-6.5%	19.0%	4.8%	18.9%	--	2.4%
Queens												
2013	24	891	274	266	20	554	288	256	289	130	0	2,992
2014	27	929	271	268	11	596	232	242	316	135	0	3,027
% Change	12.5%	4.3%	-1.1%	0.8%	-45.0%	7.6%	-19.4%	-5.5%	9.3%	3.8%	--	1.2%
Staten Island												
2013	4	234	50	79	6	92	86	61	63	56	0	731
2014	5	269	64	82	3	107	74	72	74	44	1	795
% Change	25.0%	15.0%	28.0%	3.8%	-50.0%	16.3%	-14.0%	18.0%	17.5%	-21.4%	--	8.8%
OSI												
2013	16	40	13	40	5	69	36	24	75	49	0	367
2014	20	44	22	40	4	75	27	21	93	53	4	403
% Change	25.0%	10.0%	69.2%	0.0%	-20.0%	8.7%	-25.0%	-12.5%	24.0%	8.2%	--	9.8%
Other												
2013	7	48	80	46	2	123	18	27	37	38	0	426
2014	6	30	72	53	0	117	15	20	41	41	0	395
% Change	-14.3%	-37.5%	-10.0%	15.2%	--	-4.9%	-16.7%	-25.9%	10.8%	7.9%	--	-7.3%
Citywide												
2013	162	4,136	1,414	1,462	119	3,044	1,380	1,252	1,831	753	2	15,555
2014	195	4,320	1,488	1,445	73	3,020	1,212	1,349	1,990	754	8	15,854
% Change	20.4%	4.4%	5.2%	-1.2%	-38.7%	-0.8%	-12.2%	7.7%	8.7%	0.1%	300.0%	1.9%

Figure 3: SCR Allegations, SEP 14 – NOV 14



Total Allegations = 39,577

TABLE 3 - SCR Allegations, SEP 13 - NOV 13 and SEP 14 - NOV 14

Year	Physical Abuse	Educational Neglect	Lack of Medical Care	Neglect	Psychological Abuse	Sexual Abuse	Other	Total
Bronx								
2013	1,292	1,055	492	7,321	73	230	1,532	11,995
2014	1,373	1,095	464	7,565	45	265	1,619	12,426
% Change	6.3%	3.8%	-5.7%	3.3%	-38.4%	15.2%	5.7%	3.6%
Brooklyn								
2013	1,472	999	439	7,066	36	240	1,510	11,762
2014	1,381	850	412	6,754	43	226	1,306	10,972
% Change	-6.2%	-14.9%	-6.2%	-4.4%	19.4%	-5.8%	-13.5%	-6.7%
Manhattan								
2013	497	346	182	2814	18	88	594	4,539
2014	439	311	148	2693	29	74	580	4,274
% Change	-11.7%	-10.1%	-18.7%	-4.3%	61.1%	-15.9%	-2.4%	-5.8%
Queens								
2013	1,088	378	251	4,167	69	128	1,039	7,120
2014	1,033	373	228	4,319	55	129	947	7,084
% Change	-5.1%	-1.3%	-9.2%	3.6%	-20.3%	0.8%	-8.9%	-0.5%
Staten Island								
2013	183	154	52	1,183	15	39	301	1,927
2014	241	148	67	1,236	16	37	322	2,067
% Change	31.7%	-3.9%	28.8%	4.5%	6.7%	-5.1%	7.0%	7.3%
OSI								
2013	276	45	46	981	4	36	132	1,520
2014	262	39	54	1,062	10	61	172	1,660
% Change	-5.1%	-13.3%	17.4%	8.3%	150.0%	69.4%	30.3%	9.2%
Other								
2013	113	71	30	668	8	29	220	1,139
2014	123	50	33	625	4	31	228	1,094
% Change	8.8%	-29.6%	10.0%	-6.4%	-50.0%	6.9%	3.6%	-4.0%
Citywide								
2013	4,921	3,048	1,492	24,200	223	790	5,328	40,002
2014	4,852	2,866	1,406	24,254	202	823	5,174	39,577
% Change	-1.4%	-6.0%	-5.8%	0.2%	-9.4%	4.2%	-2.9%	-1.1%

**TABLE 4 - Purchased Preventive Cases
Opened and Closed
January 2012 to November 2014**

Month	Opened Cases	Closed Cases
2012		
Jan-12	870	629
Feb-12	889	835
Mar-12	944	991
Apr-12	997	870
May-12	1,117	979
Jun-12	965	869
Jul-12	853	979
Aug-12	917	1,007
Sep-12	727	900
Oct-12	875	915
Nov-12	738	702
Dec-12	938	871
2013		
Jan-13	960	884
Feb-13	873	916
Mar-13	962	1,171
Apr-13	940	988
May-13	864	1,337
Jun-13	863	780
Jul-13	868	1,004
Aug-13	802	1,084
Sep-13	844	724
Oct-13	933	765
Nov-13	901	685
Dec-13	1,106	552
2014		
Jan-14	983	640
Feb-14	987	679
Mar-14	1,146	874
Apr-14	1,074	896
May-14	1,042	888
Jun-14	976	762
Jul-14	1,050	1,077
Aug-14	944	943
Sep-14	987	705
Oct-14	1,050	819
Nov-14	818	638

**Table 5 - Referrals to Purchased Preventive Services by Source
January 2012 to November 2014**

Month	Total Referrals	Division of Child Protection	Foster Care Agencies	PPRS Transfer	School	Self	Other Sources*
2012							
Jan-12	1,431	66.5%	0.7%	8.5%	3.6%	3.8%	17.0%
Feb-12	1,043	78.2%	1.1%	9.0%	1.9%	6.7%	3.1%
Mar-12	1,525	73.6%	0.9%	6.0%	1.8%	3.9%	13.8%
Apr-12	1,370	72.8%	1.0%	9.4%	1.2%	4.2%	11.4%
May-12	1,463	70.9%	1.0%	7.6%	1.1%	4.4%	15.0%
Jun-12	1,279	73.8%	0.5%	5.9%	1.0%	4.7%	14.2%
Jul-12	1,308	77.4%	1.2%	7.0%	0.3%	3.7%	10.5%
Aug-12	1,391	74.0%	0.9%	11.7%	0.3%	2.9%	10.2%
Sep-12	1,110	70.5%	1.9%	9.6%	1.2%	5.0%	11.9%
Oct-12	1,159	61.1%	1.4%	12.6%	2.7%	4.9%	17.3%
Nov-12	1,106	67.0%	1.0%	9.9%	2.2%	4.7%	15.3%
Dec-12	1,206	68.7%	0.8%	5.8%	2.7%	5.6%	16.4%
CY 2012	15,391	71.3%	1.0%	8.5%	1.6%	4.5%	13.1%
2013							
Jan-13	1,474	74.1%	1.2%	7.3%	1.2%	3.7%	12.5%
Feb-13	1,308	75.8%	1.1%	8.0%	1.6%	2.9%	10.6%
Mar-13	1,270	73.5%	1.2%	6.7%	2.4%	3.9%	12.3%
Apr-13	1,421	77.9%	0.8%	7.4%	0.9%	3.0%	10.1%
May-13	1,320	68.4%	0.5%	10.2%	1.5%	3.8%	15.5%
Jun-13	953	69.2%	1.2%	9.4%	2.6%	5.0%	12.6%
Jul-13	1,014	66.3%	1.9%	14.4%	1.6%	3.9%	11.9%
Aug-13	1,212	70.5%	0.7%	11.8%	0.7%	4.7%	11.6%
Sep-13	1,262	64.0%	2.1%	11.3%	1.7%	6.7%	14.2%
Oct-13	1,319	61.0%	1.1%	9.0%	2.9%	7.5%	18.5%
Nov-13	1,249	55.9%	1.6%	10.5%	4.6%	9.2%	18.3%
Dec-13	1,464	62.2%	1.2%	8.2%	2.3%	9.2%	17.0%
CY 2013	15,266	68.3%	1.2%	9.4%	2.0%	5.3%	13.8%
2014							
Jan-14	1,537	70.0%	1.2%	6.6%	2.3%	5.8%	14.2%
Feb-14	1,334	69.7%	0.8%	8.4%	1.7%	5.5%	13.9%
Mar-14	1,612	70.0%	1.4%	8.6%	1.6%	5.3%	13.1%
Apr-14	1,525	70.2%	0.9%	7.6%	2.1%	3.7%	15.4%
May-14	1,580	74.4%	0.7%	8.3%	1.4%	5.2%	10.0%
Jun-14	1,550	78.6%	1.2%	6.3%	1.2%	3.2%	9.4%
Jul-14	1,659	79.6%	1.5%	6.7%	0.4%	4.2%	7.6%
Aug-14	1,395	72.2%	1.6%	10.8%	0.3%	4.9%	10.3%
Sep-14	1,597	49.4%	1.5%	7.6%	0.3%	4.5%	36.8%
Oct-14	1,634	68.2%	1.9%	10.0%	1.2%	4.6%	14.1%
Nov-14	1,311	66.4%	0.9%	14.3%	2.4%	3.9%	12.1%

*Other Community Sources includes the Department of Homeless Services, Family Court, FAP, Hospitals and Medical facilities, the NYC Housing Authority, PINS/DAS, Probation, and Sponsor Agencies.