

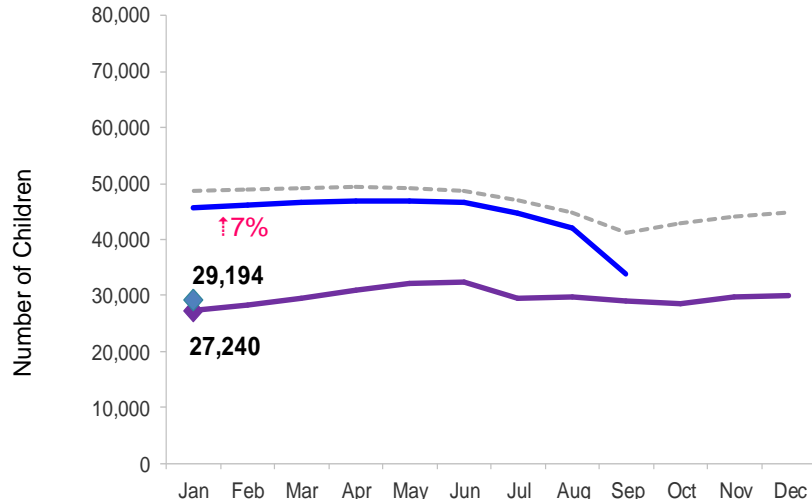


Flash

February 2014

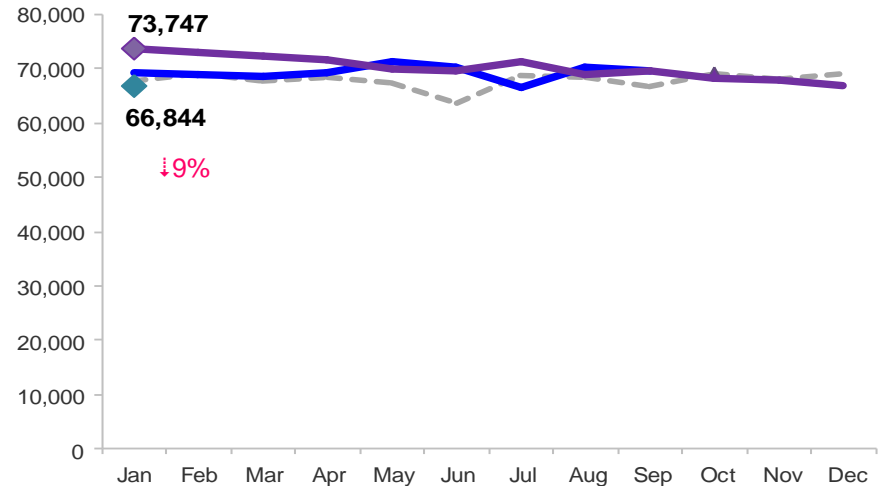
Children Enrolled in Contracted Early Learn Programs

January 2011 – January 2014 (End of Month)



Children Using Vouchers for Child Care

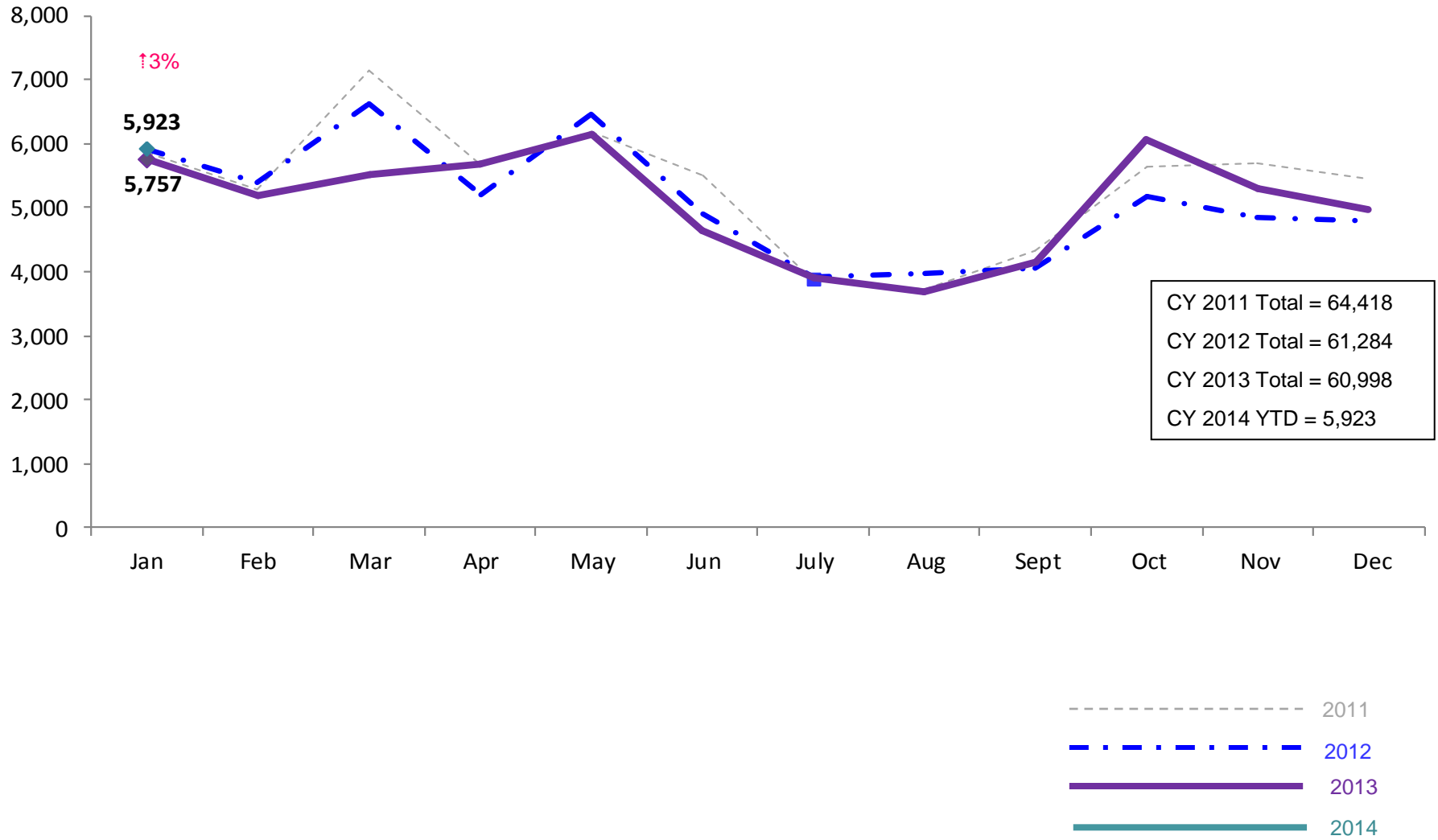
January 2011 – January 2014 (End of Month)



Notes: 1) Beginning October 1, 2012 ACS converted its early care and education system to a new model, Early Learn NYC. Enrollment data for the transitional months of October – December 2012 are not available because contractors were in the midst of implementing the data collection systems. 2) Percentage change is January 2013 vs. January 2014.

SCR Intakes

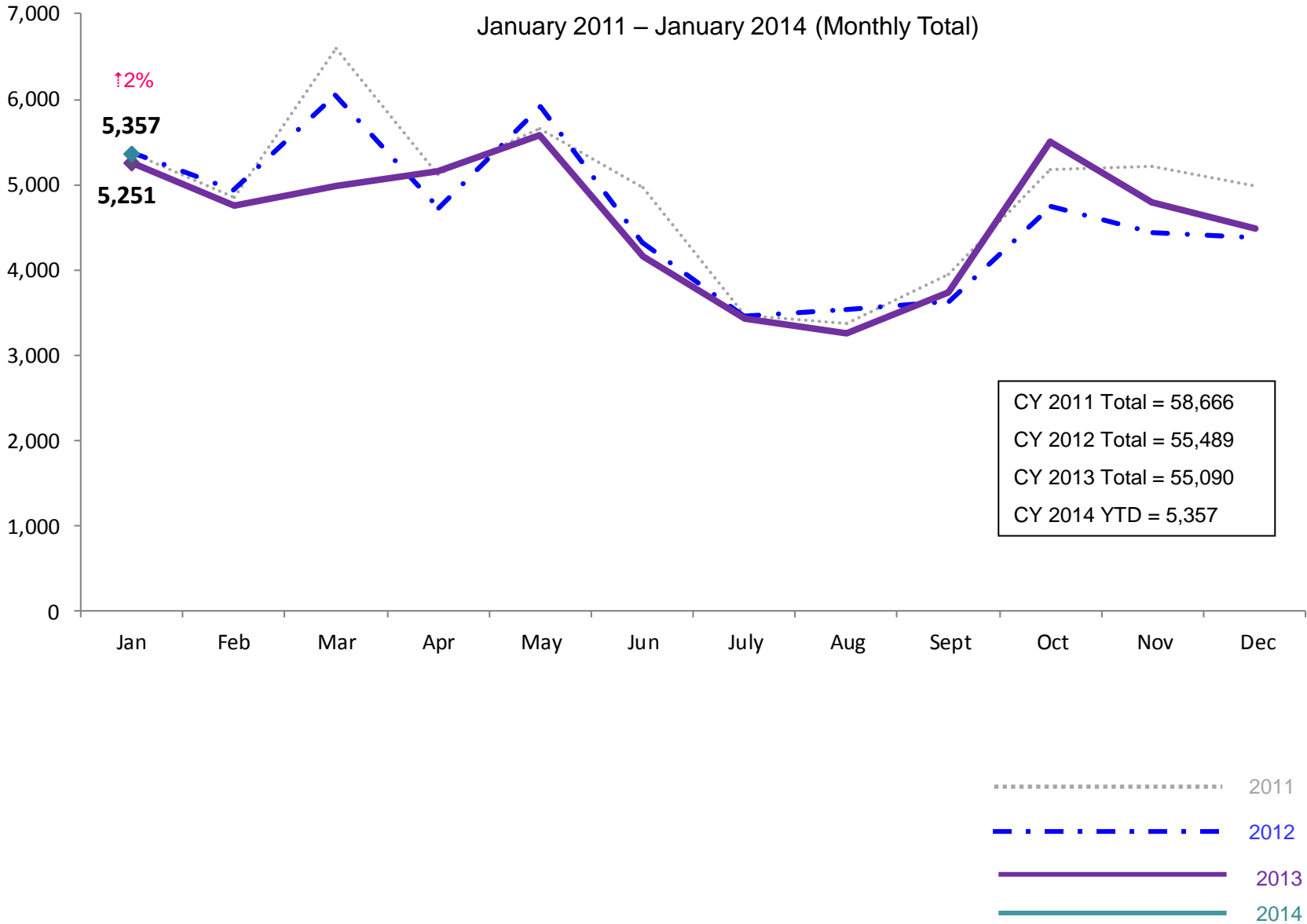
January 2011 – January 2014 (Monthly Total)



Note: Percentage change is January 2013 vs. January 2014.
 See Pages 27 through 32 of the Appendix for supporting data.

SCR Consolidated Investigations

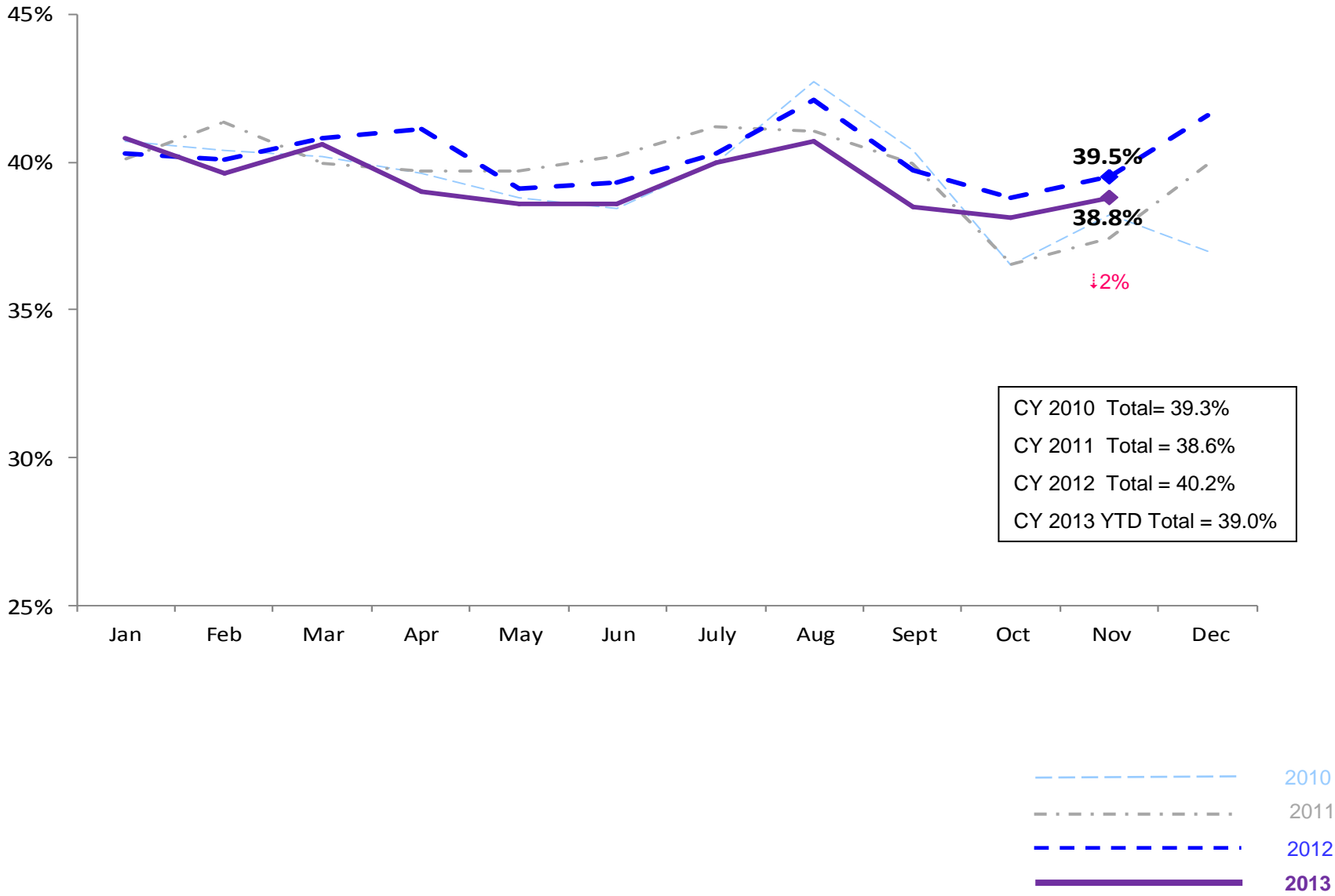
January 2011 – January 2014 (Monthly Total)



Note: Percentage change is January 2013 vs. January 2014.

SCR Investigation Indication Rate

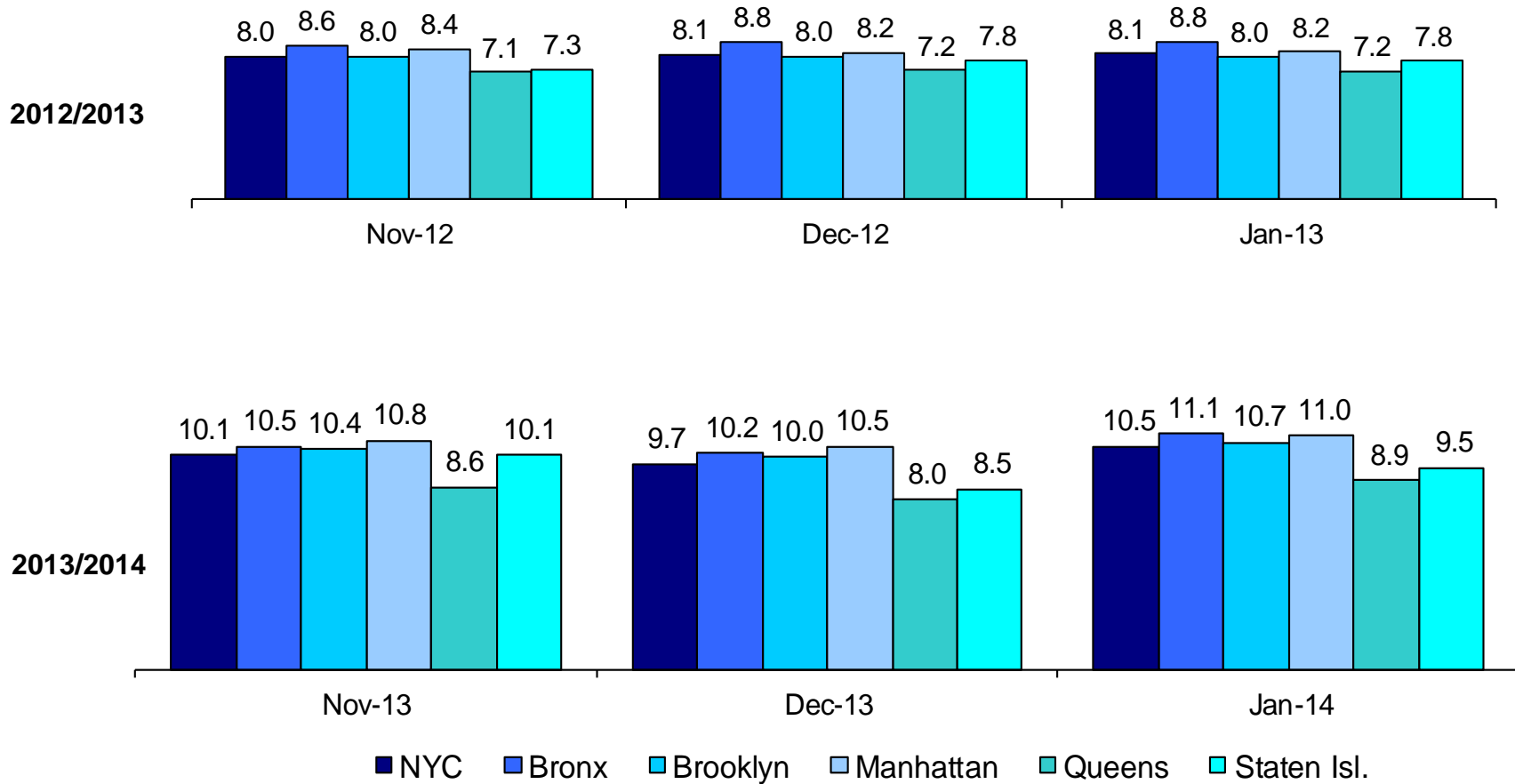
January 2010 – November 2013



Note: Percentage change is November 2012 vs. November 2013.

Average P/D Combined Caseload*

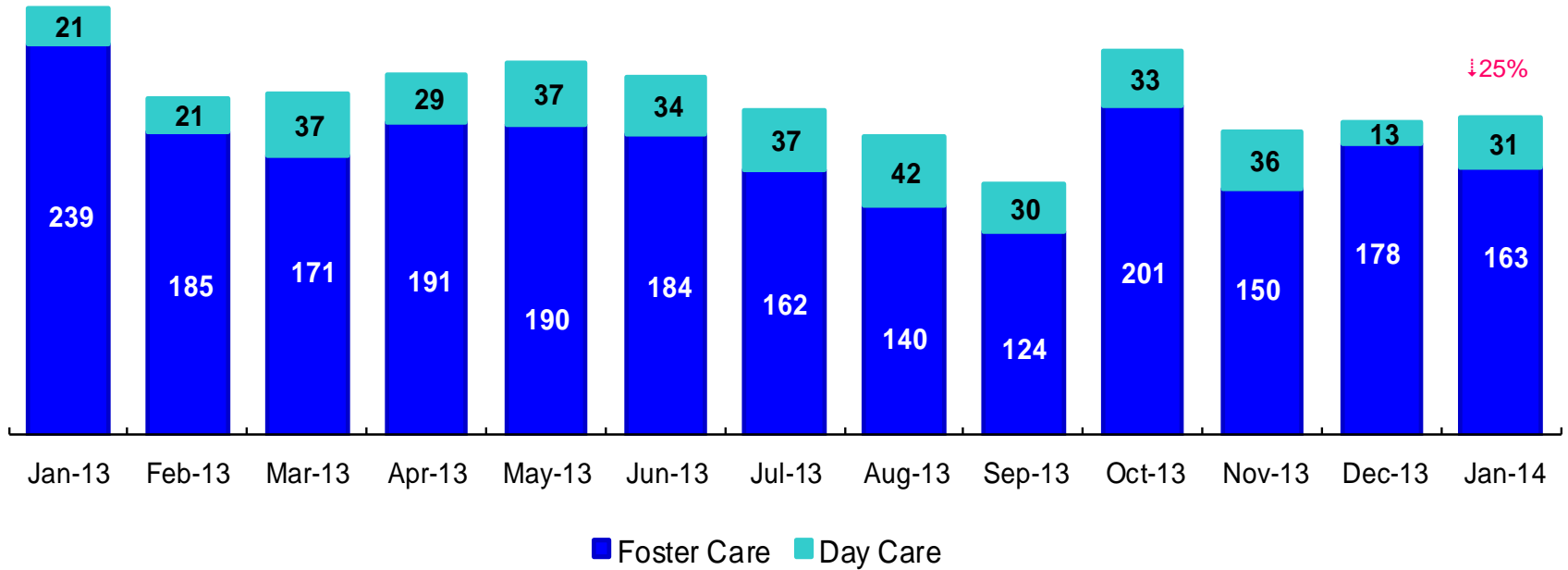
November 2012 – January 2013 & November 2013 – January 2014



* Caseloads are of protective/diagnostic caseworkers only and exclude the caseloads carried by Level I and Level II Supervisors. 6

OSI Investigations by Program

January 2013– January 2014



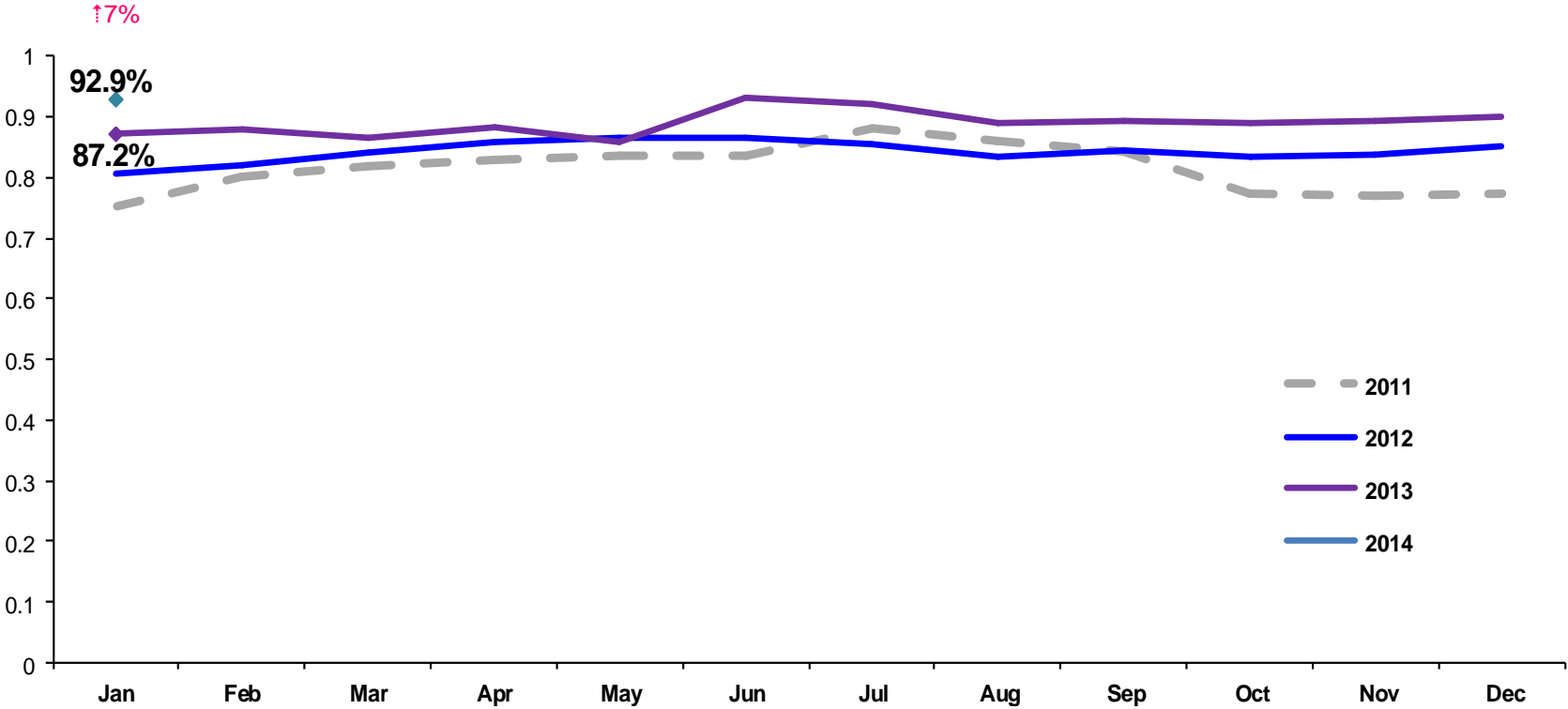
	Jan 2013	Feb 2013	Mar 2013	Apr 2013	May 2013	Jun 2013	Jul 2013	Aug 2013	Sep 2013	Oct 2013	Nov 2013	Dec 2013	Jan 2014
Number of Investigations	260	206	208	220	227	218	199	182	154	234	186	191	194

Note: Percentage change is January 2013 vs. January 2014.

PPRS Utilization Rate

January 2011 – January 2014 (End of Month)

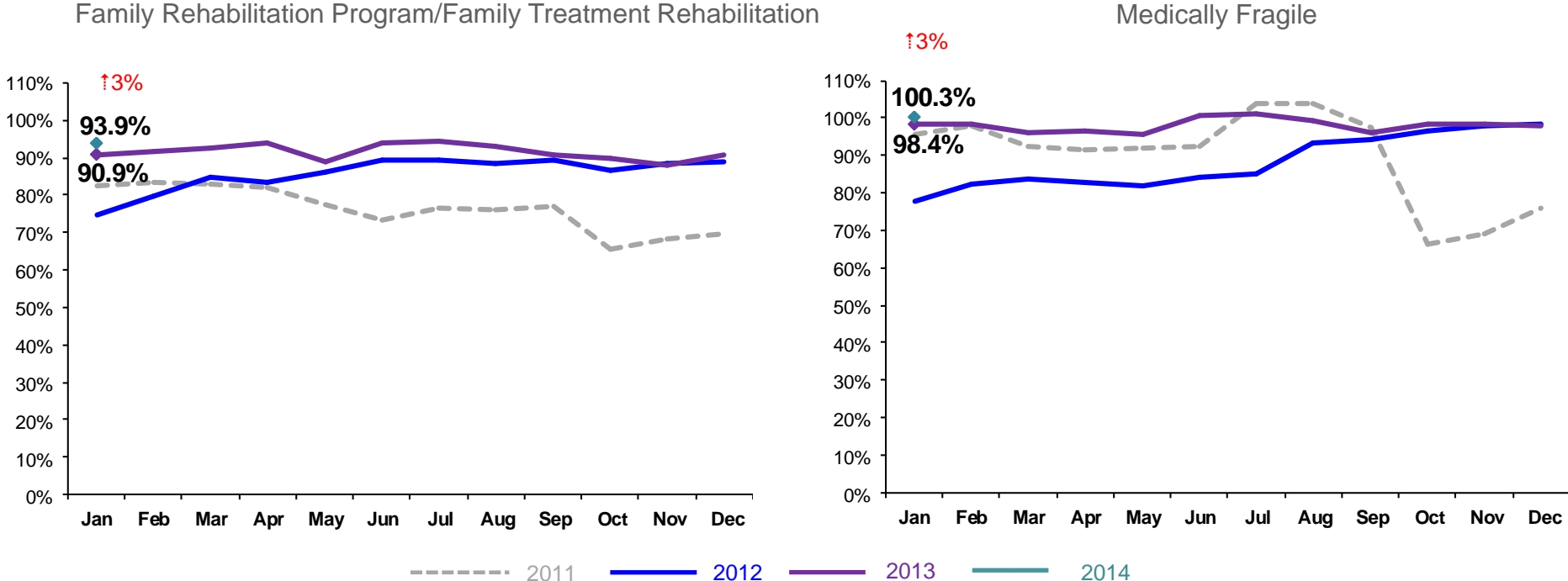
General Preventive



Notes: 1) Beacons programs are included in the GP utilization rates. 2) During February - June 2011 GP rates were adjusted by excluding programs in the process of being closed. GP rates were also adjusted during July – September 2011 by excluding newly opened programs. 3) During June-October 2013 GP programs in the process of converting to EBMs were excluded from the GP utilization statistics.) Percentage change is January 2013 vs. January 2014.

PPRS Utilization Rate

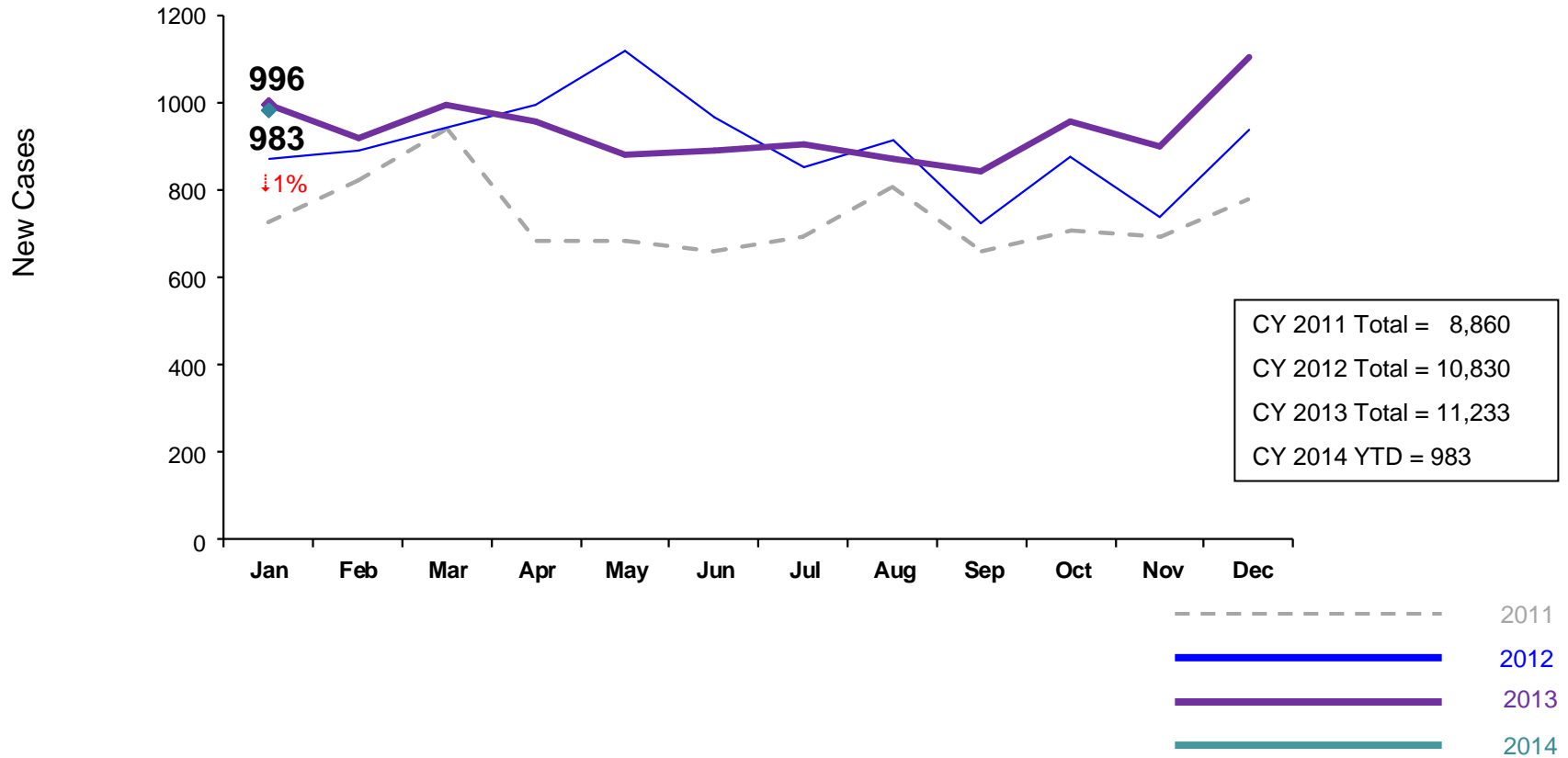
January 2011 – January 2014 (End of Month)



Notes: 1) During February - June 2011 FRP rates were adjusted by excluding programs in the process of being closed. FT/R rates were also adjusted during July – September 2011 by excluding newly opened programs. As of October 2011 all FT/R programs are included in the FT/R utilization rates. 2) Beginning July 2011 Family Treatment Rehabilitation programs replaced the Family Rehabilitation programs. 3) Beginning December 2011 the NYF Family Services for deaf Children and Adults program is no longer included in the medically fragile utilization rate. 4) During June -October 2013 FTR programs in the process of converting to EBMs were excluded from the FTR utilization statistics. 5) Percentage change is January 2013 vs. January 2014.

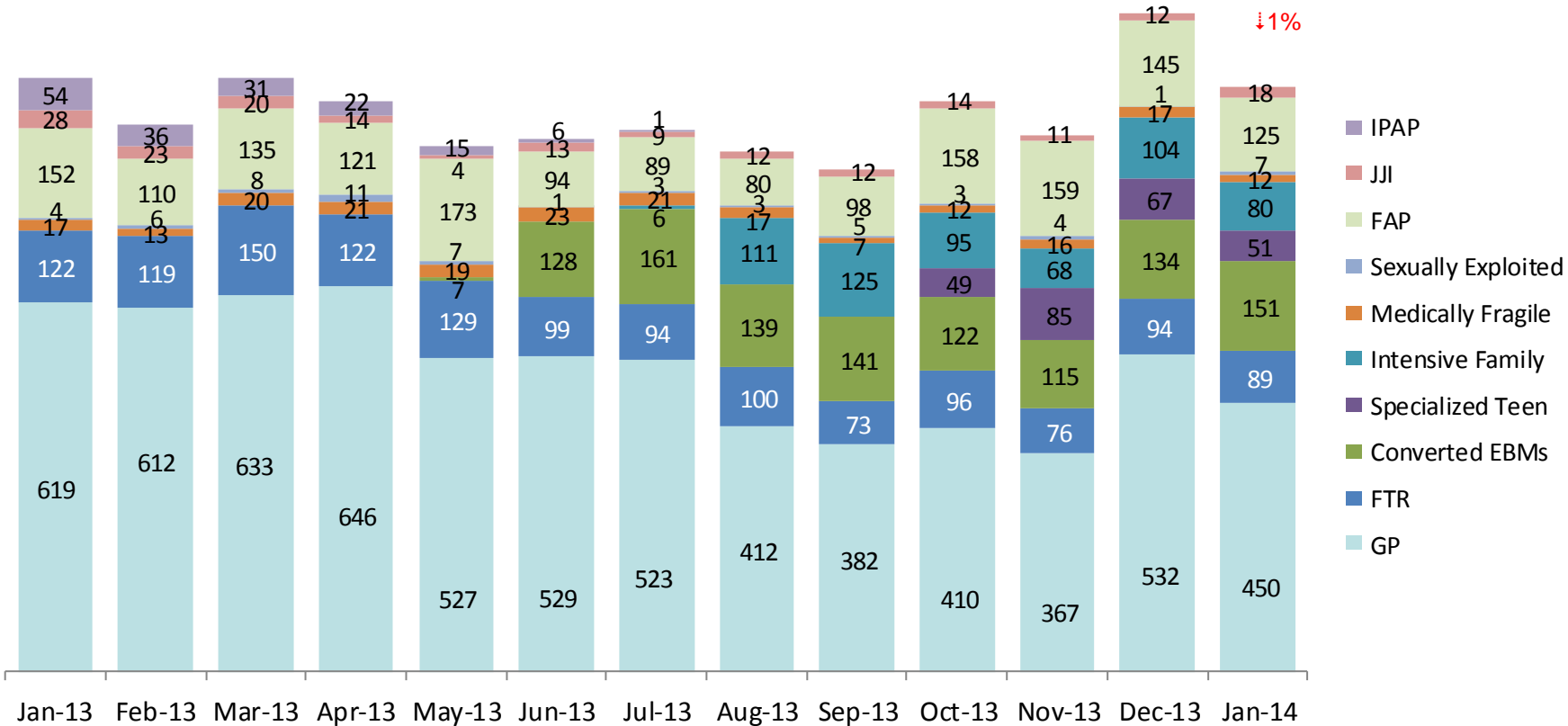
New Preventive Cases*

January 2011 – January 2014



*Notes: 1) New preventive cases do not include cases transferred from one preventive program to another. 2) Percentage change is January 2013 vs. January 2014. 3) See Pages 34 and 35 of the Appendix for supporting data.

New Preventive Cases* by Program Type
January 2013 – January 2014

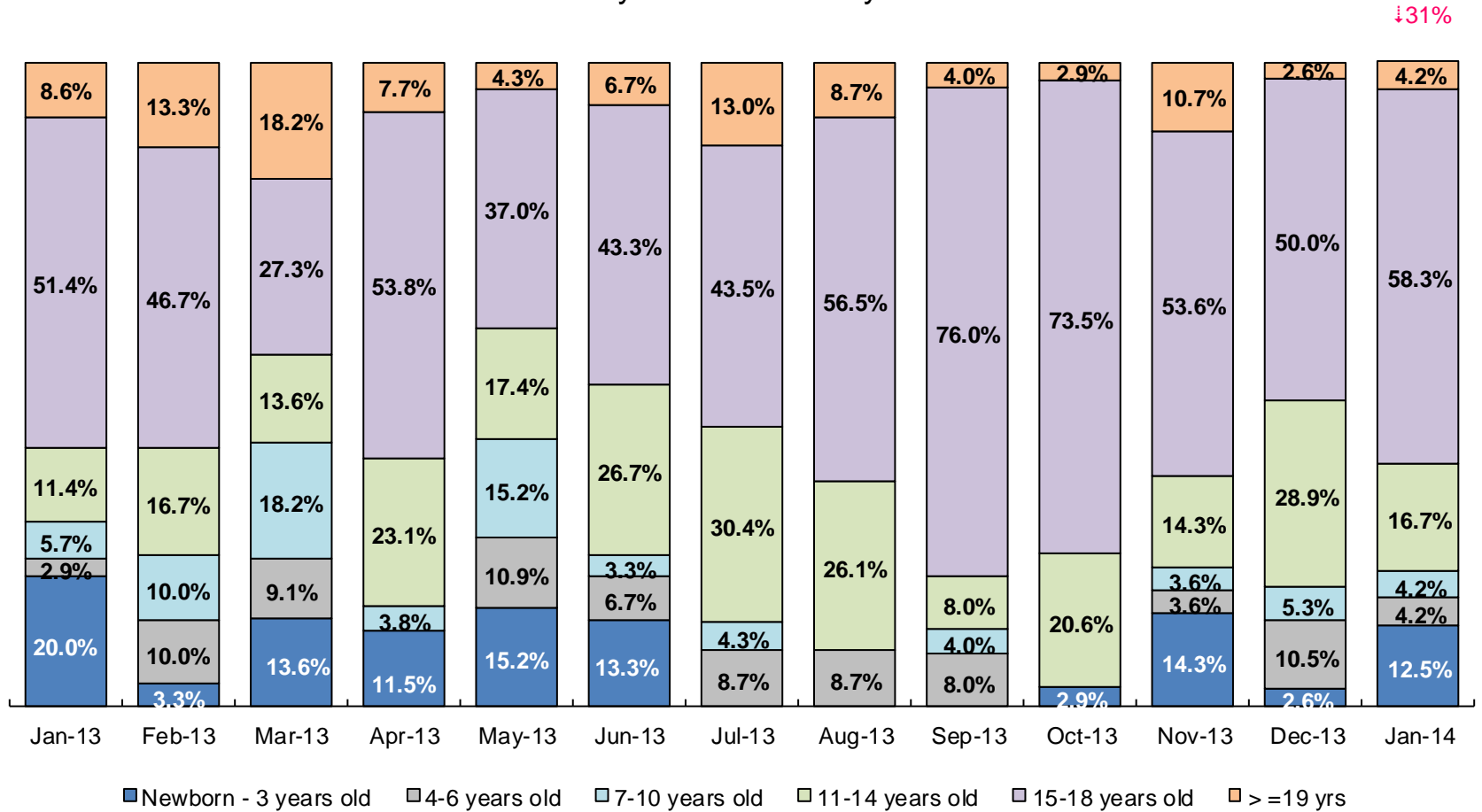


	Jan 2013	Feb 2013	Mar 2013	Apr 2013	May 2013	Jun 2013	Jul 2013	Aug 2013	Sep 2013	Oct 2013	Nov 2013	Dec 2013	Jan 2014
Number of New Preventive Cases	996	919	997	957	881	893	907	874	843	959	901	1,106	983

Notes: 1) New preventive cases do not include cases transferred from one preventive program to another. 2) Percentage change is January 2013 vs. January 2014.

Children's Center Population by Age

January 2013 – January 2014

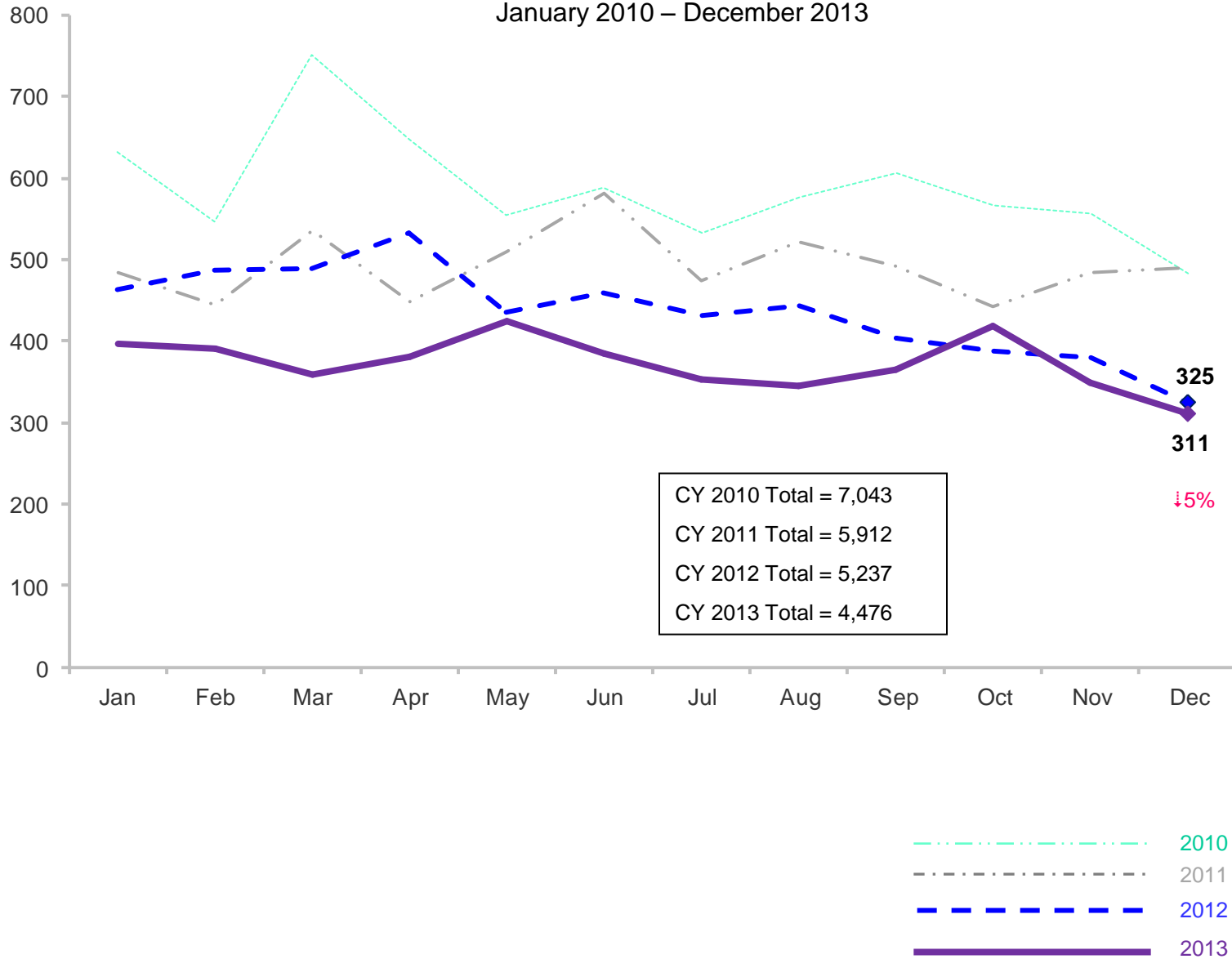


	Jan 2013	Feb 2013	Mar 2013	Apr 2013	May 2013	Jun 2013	Jul 2013	Aug 2013	Sep 2013	Oct 2013	Nov 2013	Dec 2013	Jan 2014
Number of Children	35	30	22	26	46	30	23	23	25	34	28	38	24

Note: Percentage change is January 2013 vs. January 2014.

Total Monthly Placements

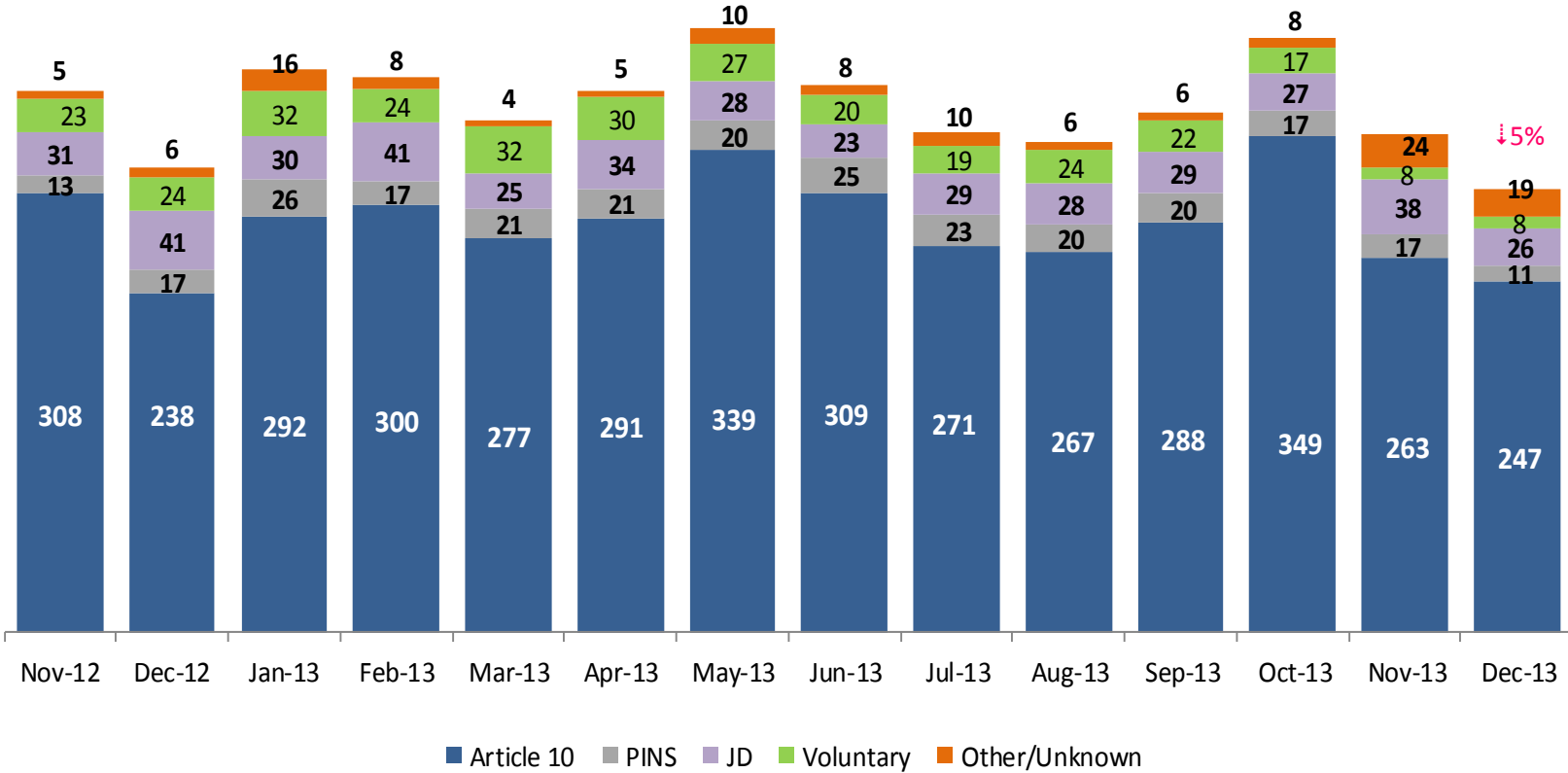
January 2010 – December 2013



Note: Percentage change is December 2012 vs. December 2013.

Reason for Initial Placements into Foster Care

December 2012 – December 2013

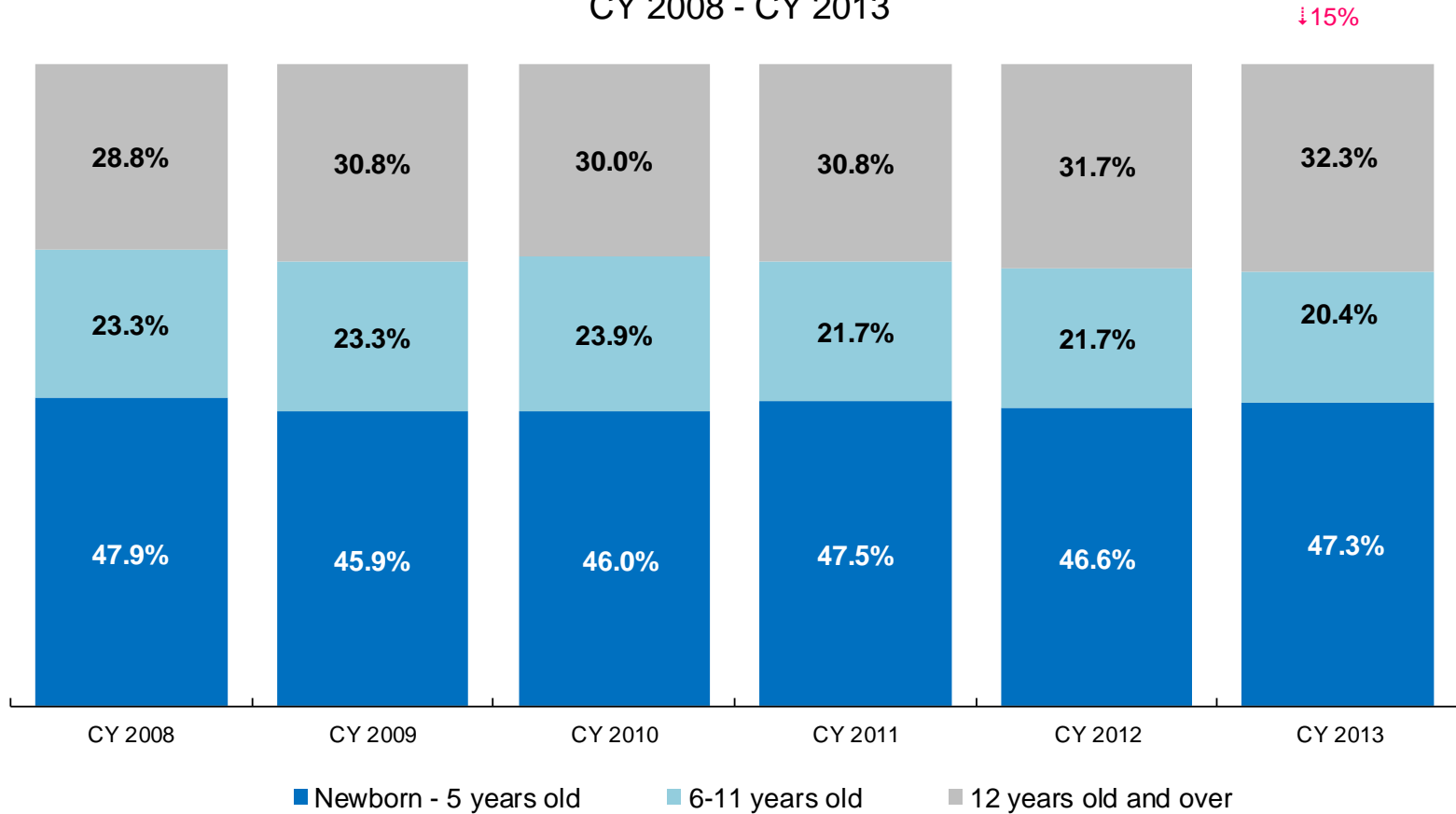


	Dec 2012	Jan 2013	Feb 2013	Mar 2013	Apr 2013	May 2013	Jun 2013	Jul 2013	Aug 2013	Sep 2013	Oct 2013	Nov 2013	Dec 2013
Number of Placements	326	396	390	359	381	424	385	352	345	365	418	350	311

Note: Percentage change is December 2012 vs. December 2013.

Placements* by Age

CY 2008 - CY 2013



	CY 2008	CY 2009	CY 2010	CY 2011	CY 2012	CY 2013
Placements	4,764	5,657	5,842	4,941	4,823	4,118

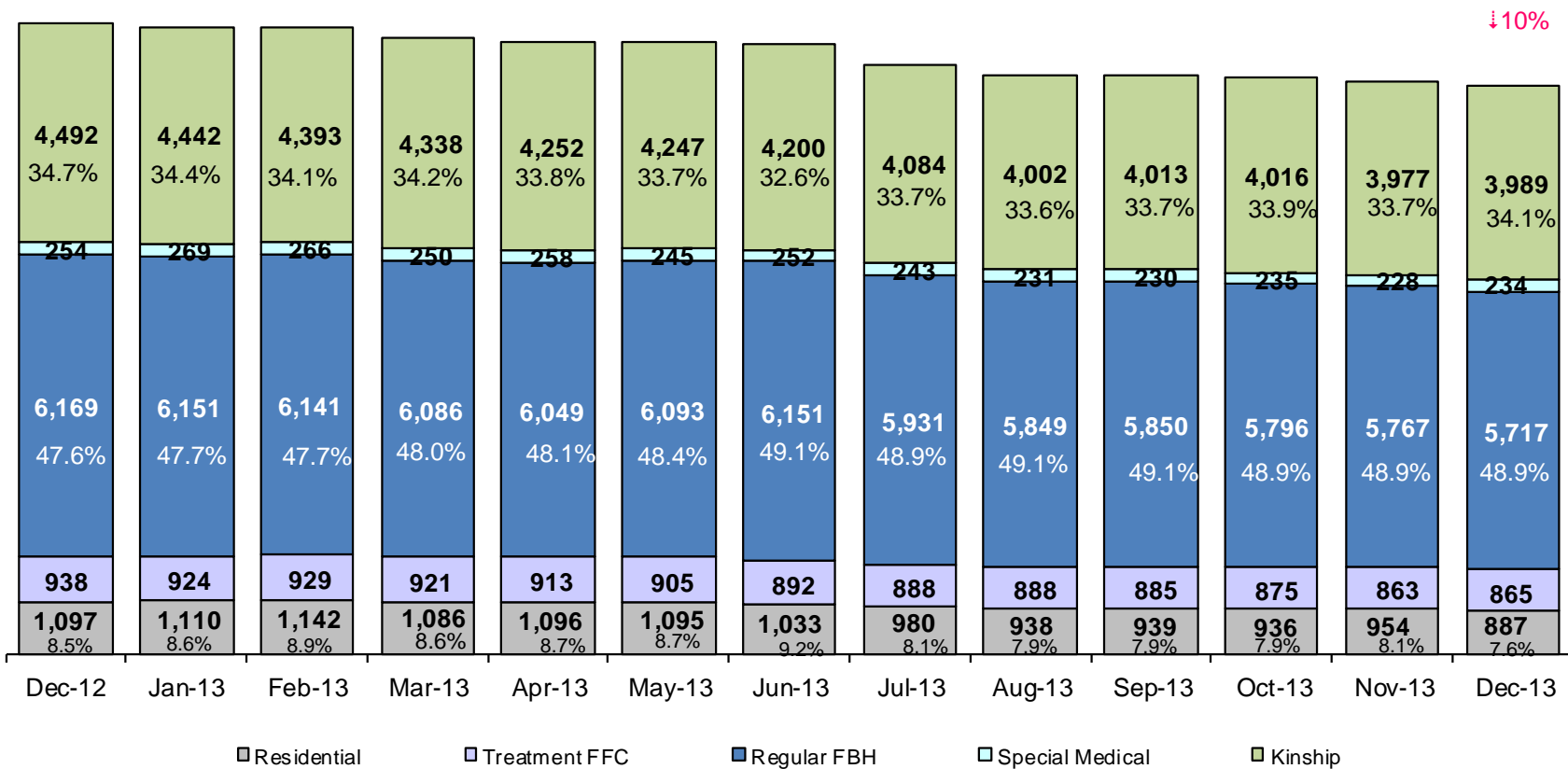
↓15%

*Excludes JD placements.

Note: Percentage change is CY 2012 vs. CY 2013.

Children in Foster Care*

December 2012 – December 2013 (end of month)

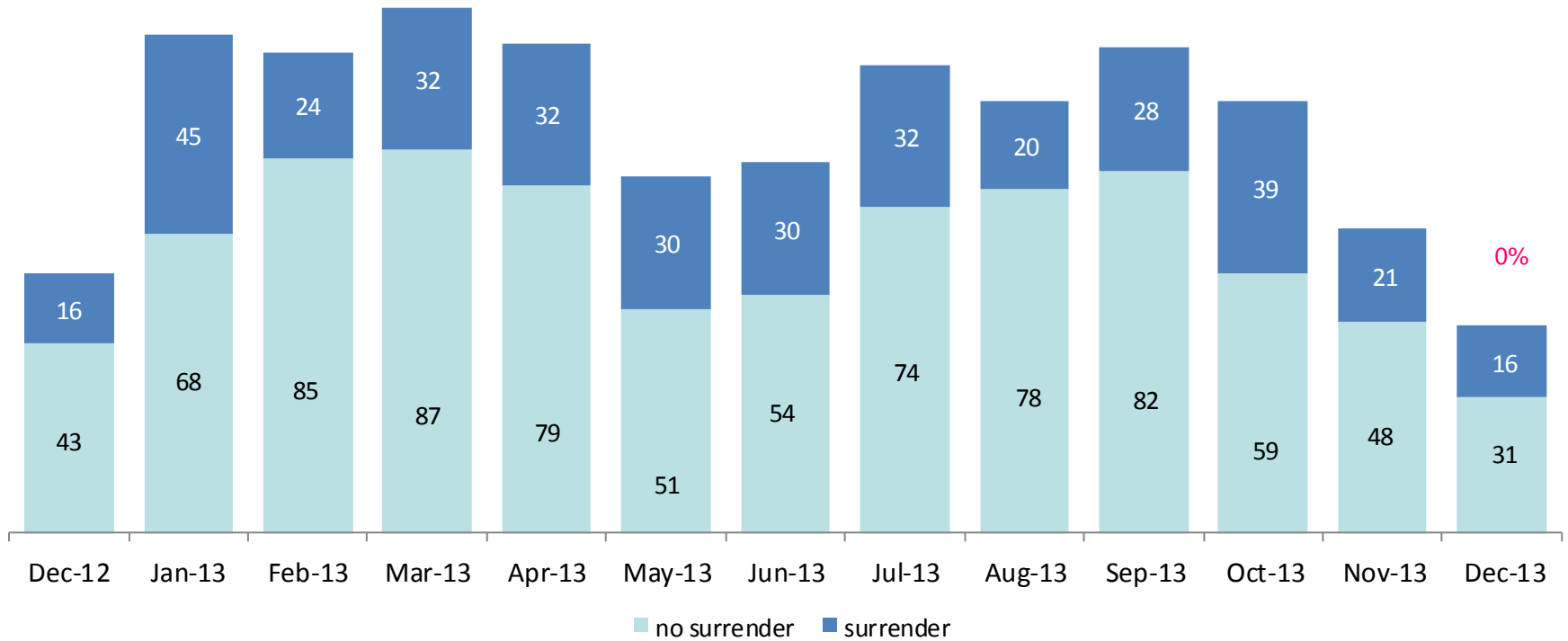


	Dec 2012	Jan 2013	Feb 2013	Mar 2013	Apr 2013	May 2013	Jun 2013	Jul 2013	Aug 2013	Sep 2013	Oct 2013	Nov 2013	Dec 2013
Number in Foster Care	12,950	12,896	12,871	12,681	12,568	12,585	12,528	12,126	11,908	11,917	11,858	11,789	11,692

*Excludes JD placements and includes approximately 400 young children who are living in foster homes or residential care facilities with their mothers who are in foster care (8D children).

Note: Percentage change is December 2012 vs. December 2013.

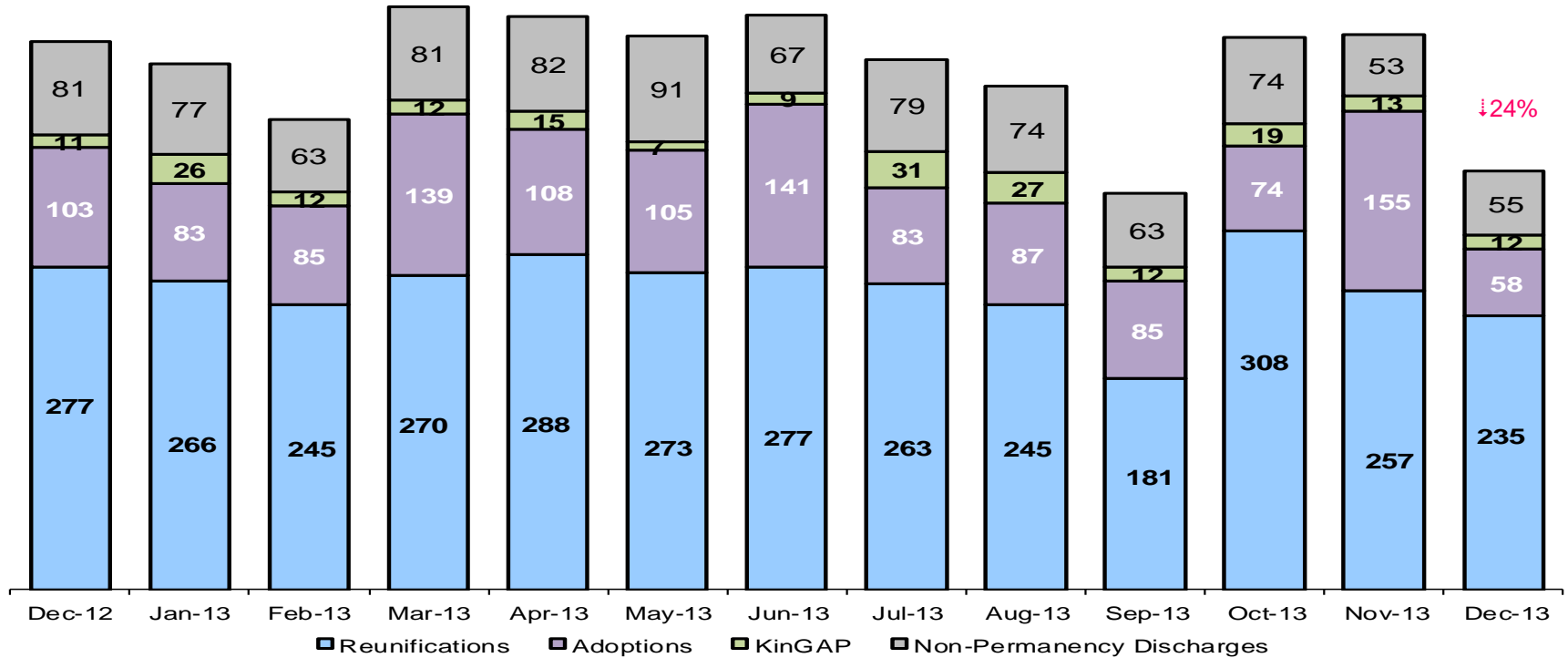
Children Freed for Adoption, Surrender by at Least One Parent December 2012 – December 2013



	Dec 2012	Jan 2013	Feb 2013	Mar 2013	Apr 2013	May 2013	Jun 2013	Jul 2013	Aug 2013	Sep 2013	Oct 2013	Nov 2013	Dec 2013
Number Freed for Adoption	59	113	109	119	111	81	84	106	98	110	98	69	47

Note: Percentage change is for the number of children surrendered by at least on parent during December 2012 vs. December 2013.

Permanency and Non-Permanency* Discharges from Foster Care** December 2012 – December 2013



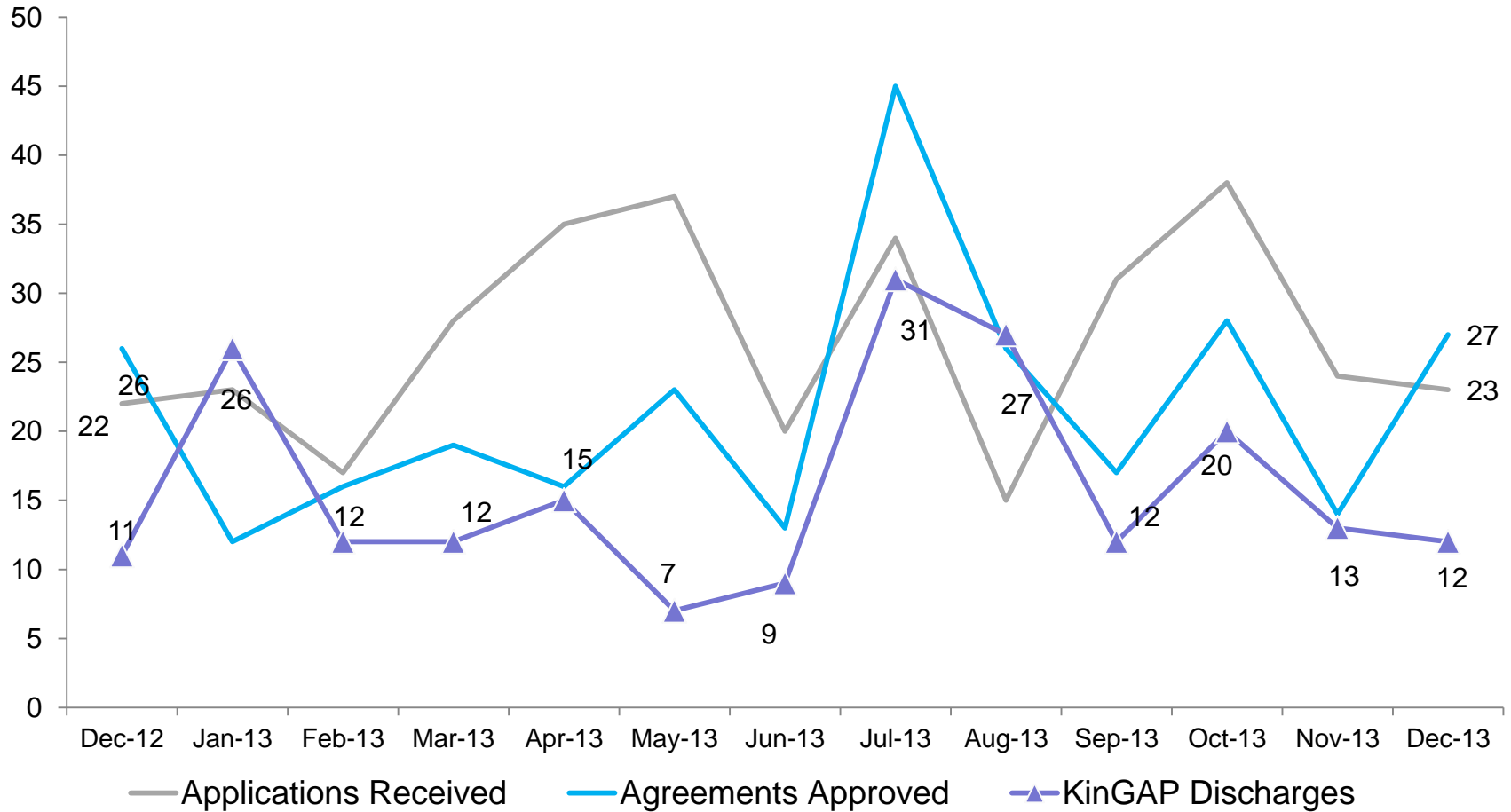
	Dec 2012	Jan 2013	Feb 2013	Mar 2013	Apr 2013	May 2013	Jun 2013	Jul 2013	Aug 2013	Sep 2013	Oct 2013	Nov 2013	Dec 2013
Number of Discharges	472	452	405	504	493	476	494	456	433	341	475	478	360

*Non-permanency discharges include AWOL, APPLA as well as other discharge destinations such as mental institutions and correctional facilities and discharges with unspecified destinations.

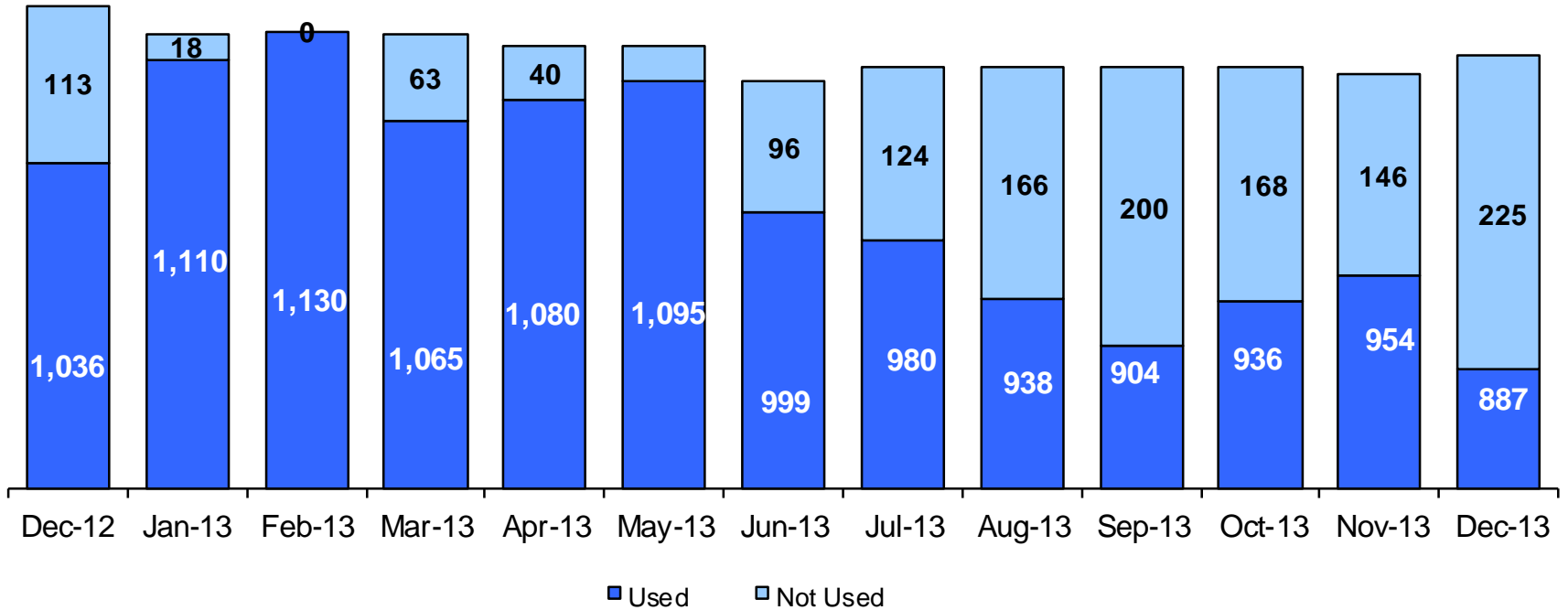
**Excludes discharges of youth who were in JD status at any time during their foster care spell.

Note: Percentage change is December 2012 vs. December 2013.

KinGAP Applications Received, Agreements Approved and Discharges, December 2012 – December 2013



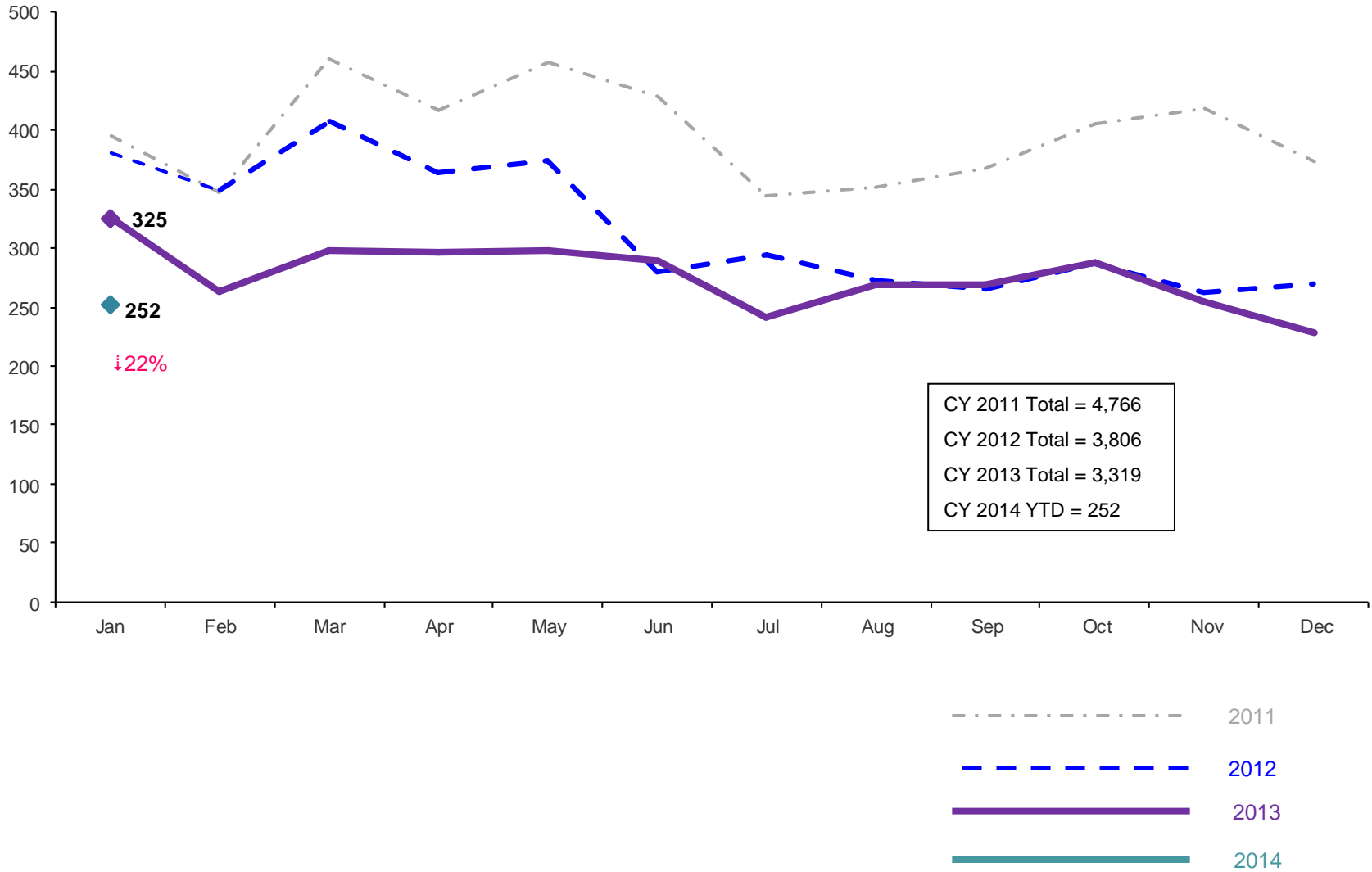
Residential Care Capacity and Utilization, December 2012 – December 2013



	Dec 2012	Jan 2013	Feb 2013	Mar 2013	Apr 2013	May 2013	Jun 2013	Jul 2013	Aug 2013	Sep 2013	Oct 2013	Nov 2013	Dec 2013
Capacity	1,149	1,128	1,128	1,128	1,120	1,120	1,095	1,104	1,104	1,104	1,104	1,100	1,112

Total Monthly Admissions to Detention

January 2011 - January 2014 (Monthly Total)

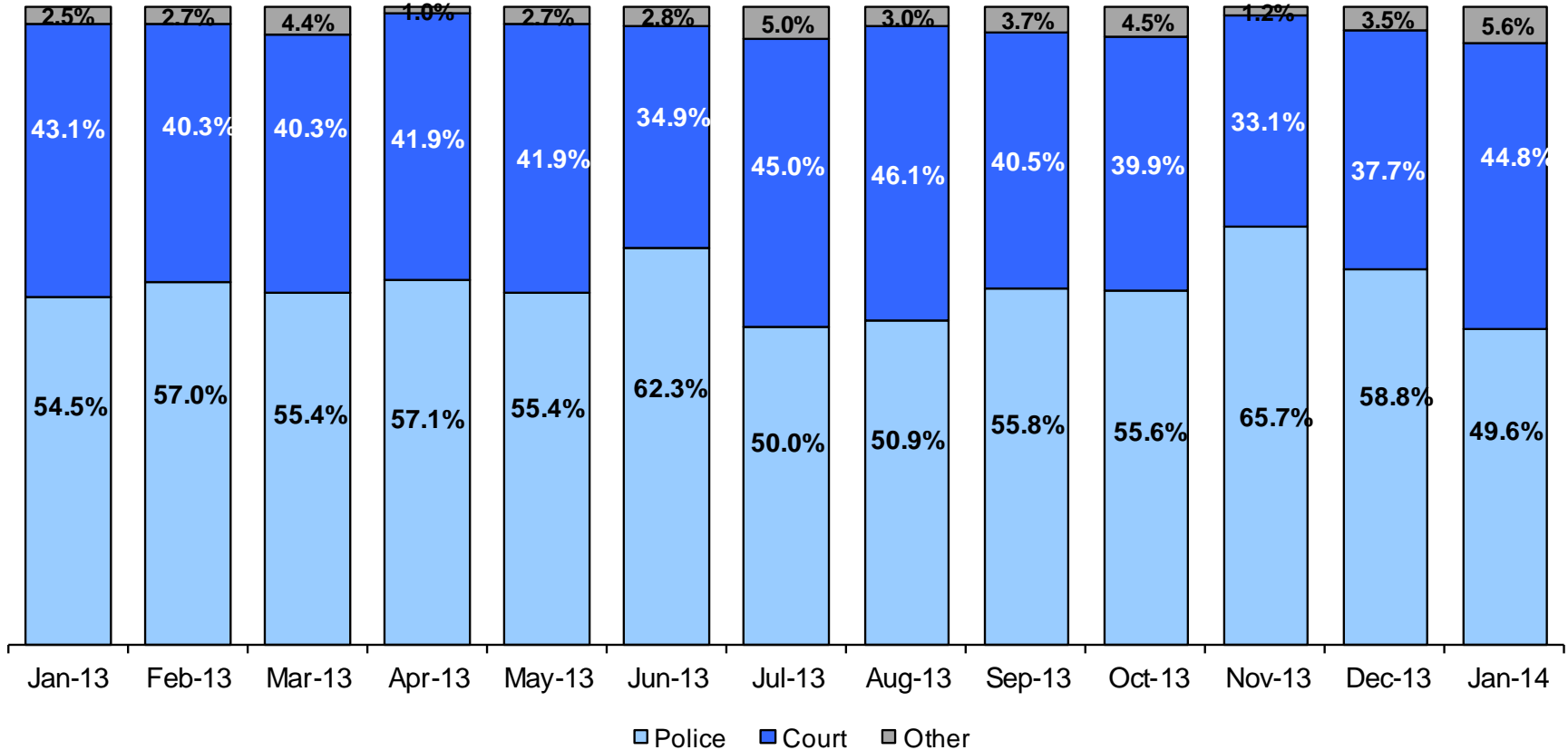


Note: Percentage change is January 2013 vs. January 2014.

Admit Authority on Admissions

January 2013 - January 2014(Monthly Total)

↓22%



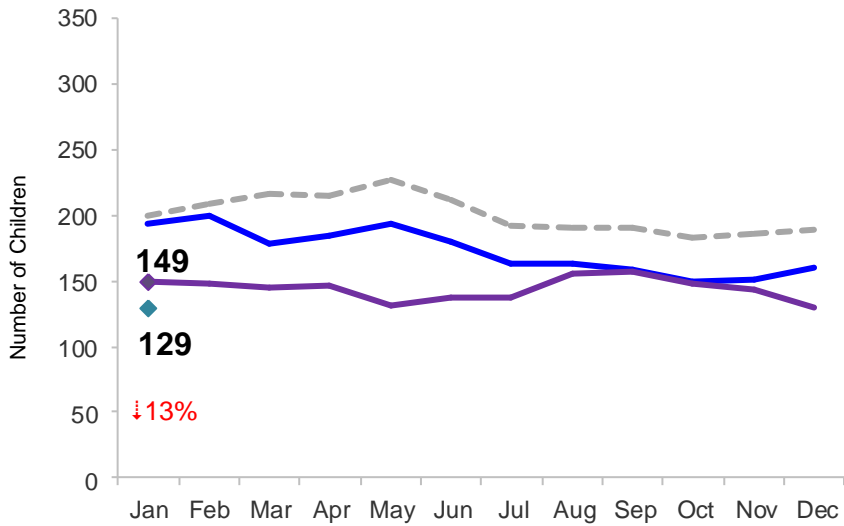
	Jan 2013	Feb 2013	Mar 2013	Apr 2013	May 2013	Jun 2013	Jul 2013	Aug 2013	Sep 2013	Oct 2013	Nov 2013	Dec 2013	Jan 2014
Number of Admissions	325	263	298	296	298	289	242	269	269	288	254	228	252

Notes: 1) Other Admit Authority includes The Sheriff Department, Department of Corrections and ACS. 2) Percentage change is January 2013 vs. January 2014.

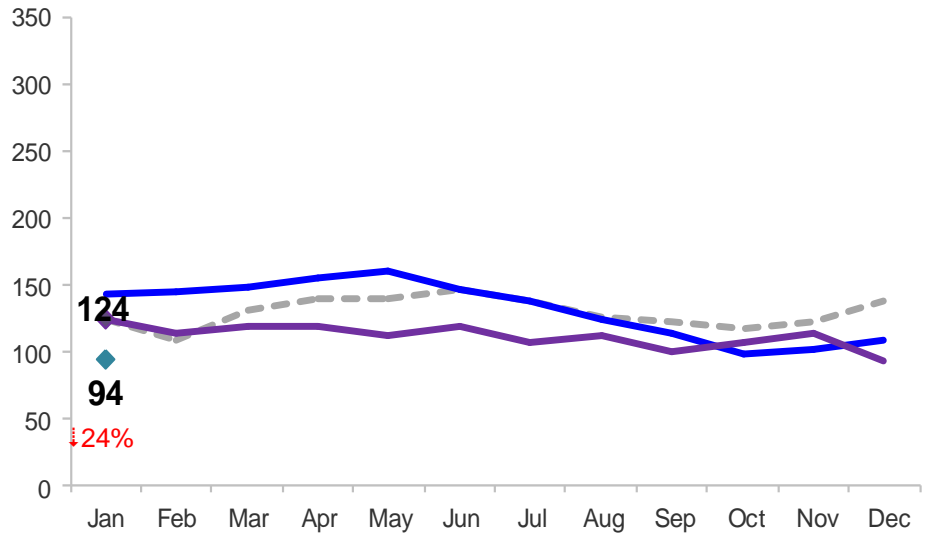
Monthly Average Daily Population

January 2011 – January 2014

Secure Detention



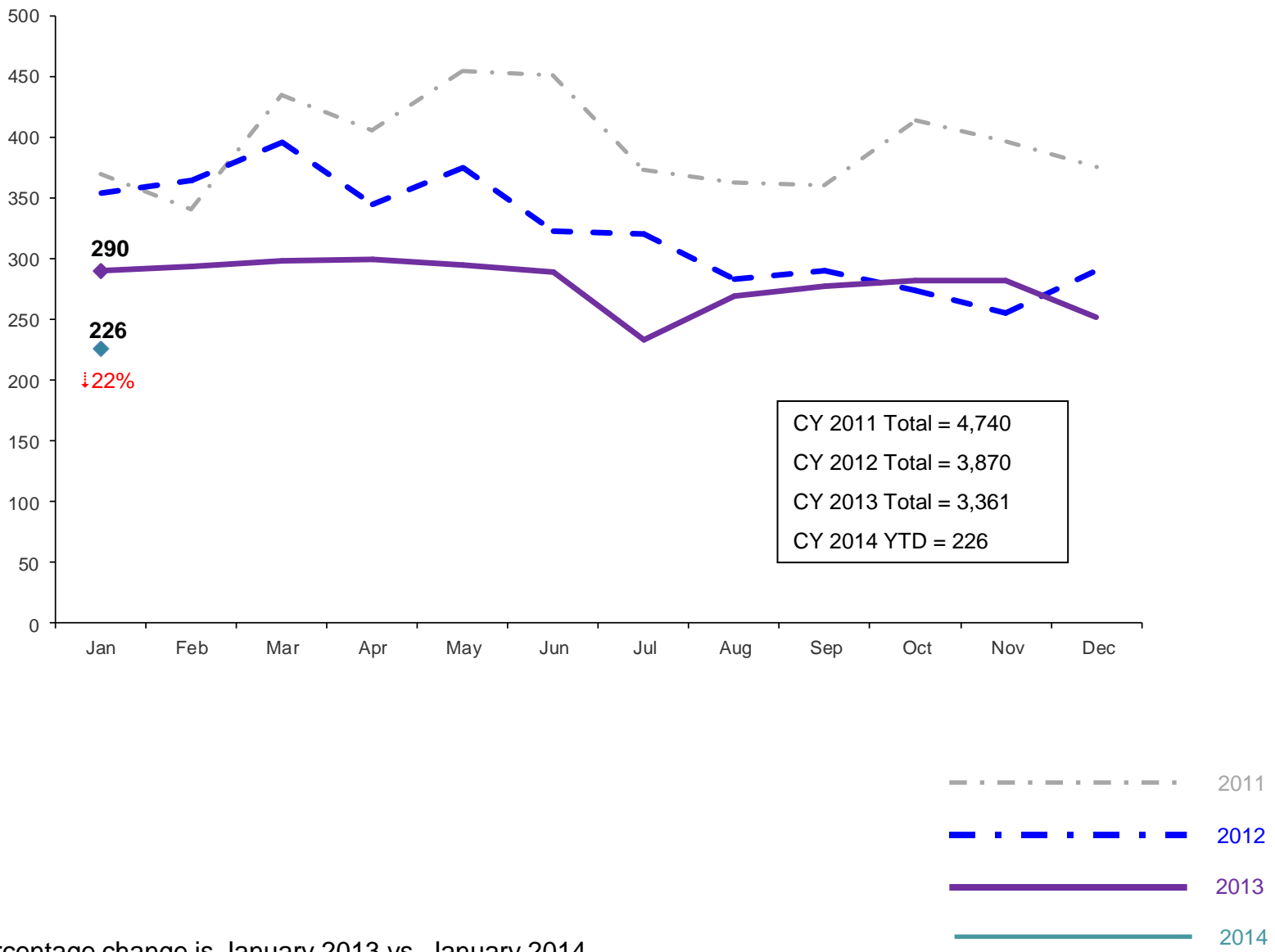
Non-Secure Detention



Note: Percentage change is January 2013 vs. January 2014.

Total Monthly Releases from Detention

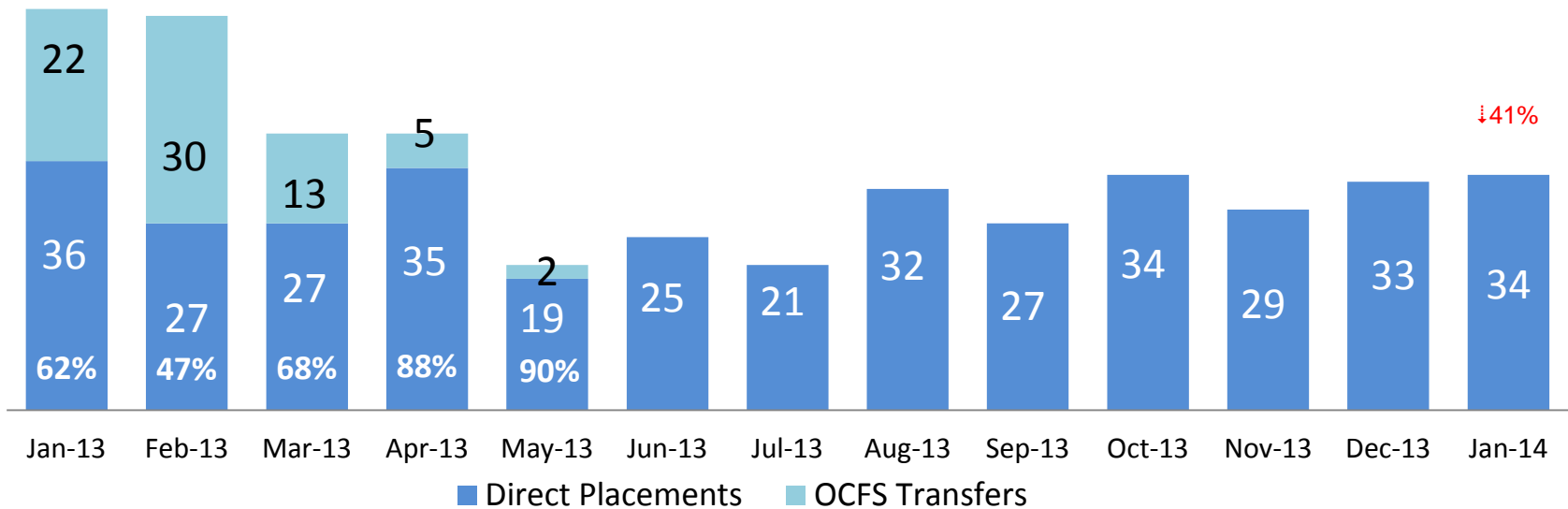
January 2011 – January 2014 (Monthly Total)



Note: Percentage change is January 2013 vs. January 2014.

ACS NSP Intakes

January 2013 – January 2014

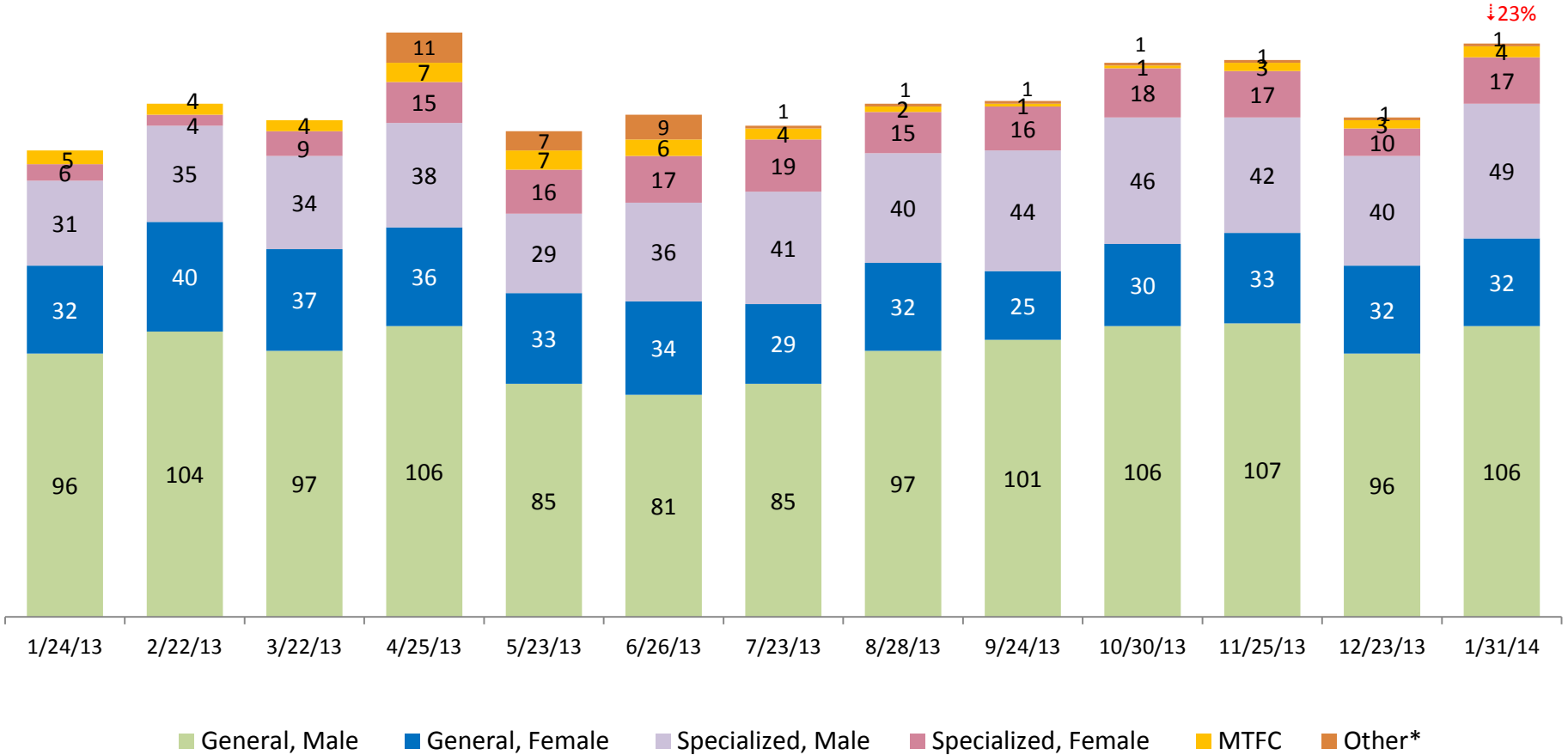


	Jan 2013	Feb 2013	Mar 2013	Apr 2013	May 2013	Jun 2013	Jul 2013	Aug 2013	Sep 2013	Oct 2013	Nov 2013	Dec 2013	Jan 2014
Number of Placements	58	57	40	40	21	25	21	32	27	34	29	33	34

Note: Percentage change is January 2013 vs. January 2014.

ACS Non-Secure Placement, in 24 hour Care

January 2013 – January 2014 (Point-in-Time)



■ General, Male
 ■ General, Female
 ■ Specialized, Male
 ■ Specialized, Female
 ■ MTFC
 ■ Other*

	1/24/13	2/22/13	3/22/13	4/25/13	5/23/13	6/26/13	7/23/13	8/28/13	9/24/13	10/30/13	11/25/13	12/23/13	1/31/14
Number in Placement	170	187	181	213	177	183	179	187	188	202	203	182	209

*Other includes NYC youth in voluntary placements with Lincoln Hall, MercyFirst and Graham Windham.

Note: Percentage change for the Monthly Admissions to Detention is January 2013 vs. January 2014.

Appendix

Figure 1: SCR Intakes by Borough, NOV 12 - JAN 13 and NOV 13 - JAN 14

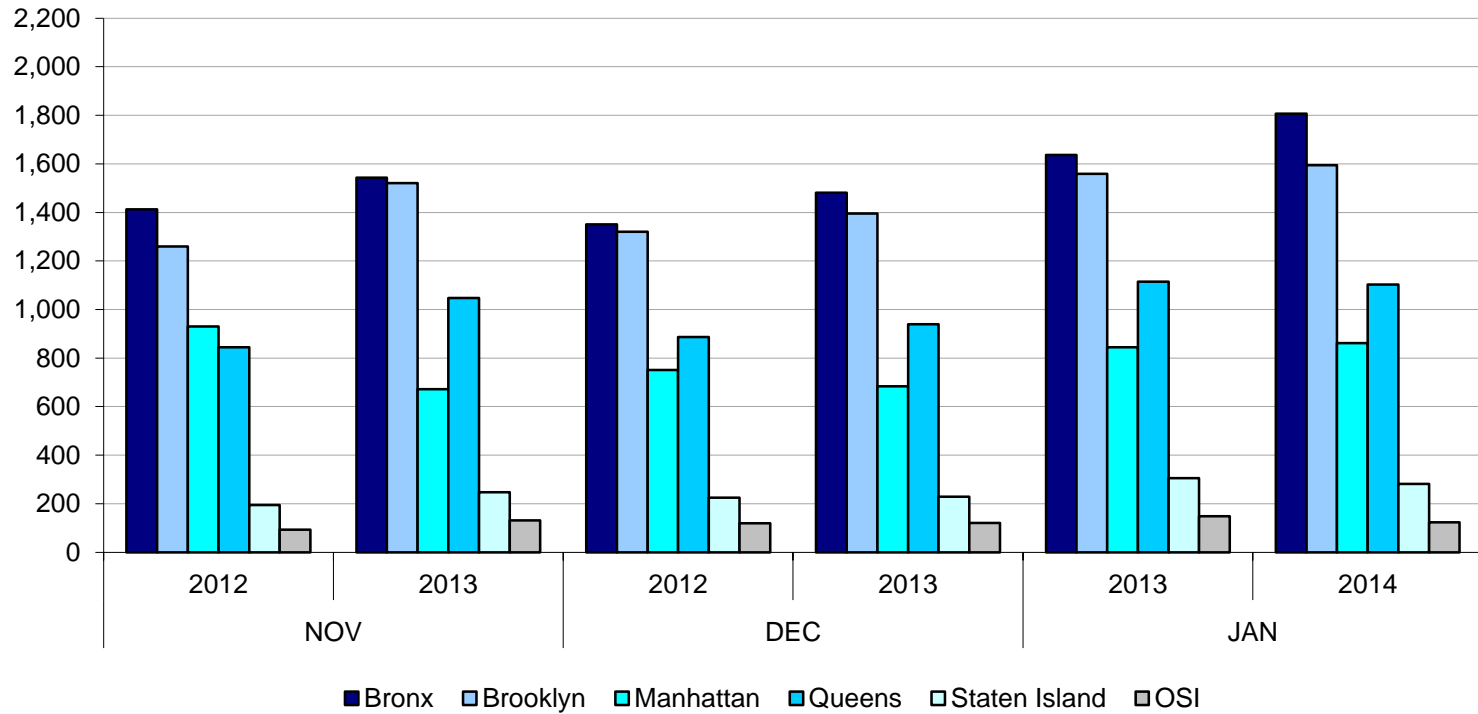


TABLE 1 - SCR Intake Changes by Borough, NOV 12 - JAN 13 and NOV 13 - JAN 14

Month	Year	Bronx	Brooklyn	Manhattan	Queens	Staten Island	OSI	Other	Total
NOV	2012	1,412	1,260	930	845	195	93	119	4,854
	2013	1,543	1,520	672	1,047	247	131	132	5,292
	% Change	9.3%	20.6%	-27.7%	23.9%	26.7%	40.9%	10.9%	25.2%
DEC	2012	1,350	1,320	751	887	225	120	128	4,781
	2013	1,481	1,395	684	940	229	121	135	4,985
	% Change	9.7%	5.7%	-8.9%	6.0%	1.8%	0.8%	5.5%	4.3%
JAN	2013	1,636	1,559	844	1,115	305	149	149	5,757
	2014	1,806	1,594	861	1,103	281	124	154	5,923
	% Change	10.4%	2.2%	2.0%	-1.1%	-7.9%	-16.8%	3.4%	2.9%
Total	2012/2013	4,398	4,139	2,525	2,847	725	362	396	15,392
	2013/2014	4,830	4,509	2,217	3,090	757	376	421	16,200
	% Change	9.8%	8.9%	-12.2%	8.5%	4.4%	3.9%	6.3%	5.2%

Figure 2: Citywide SCR Intakes by Reporter Group, NOV 12 - JAN 13 and NOV 13 - JAN 14

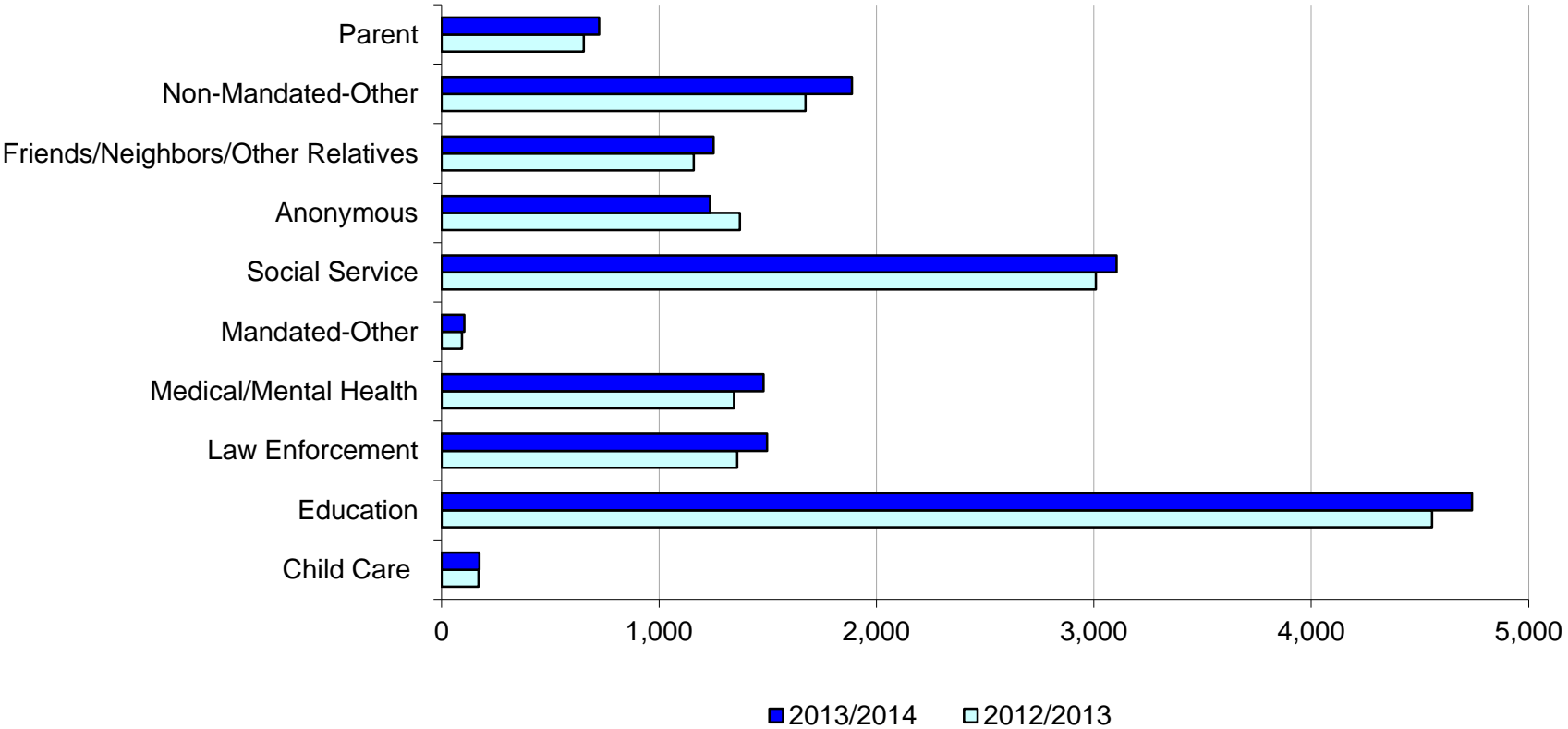
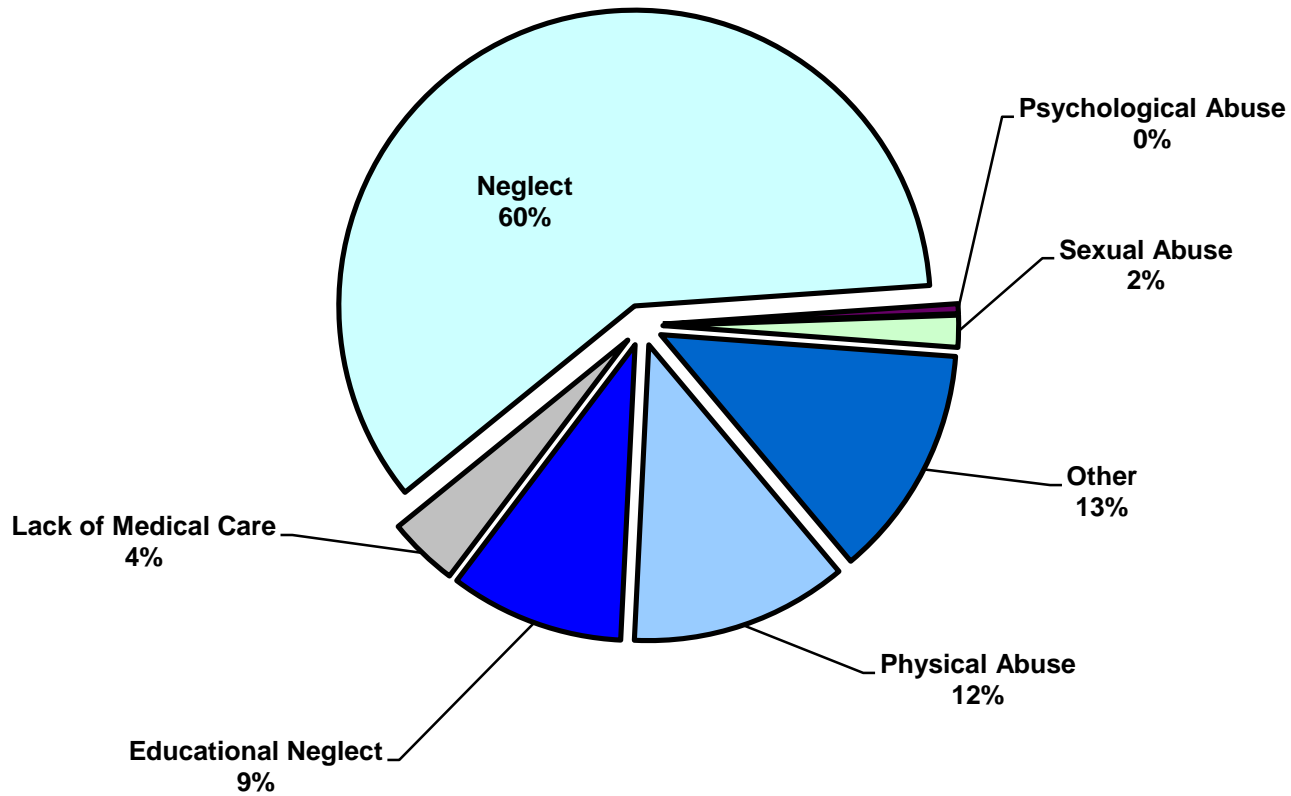


TABLE 2 - SCR Intakes by Reporter Group, NOV 12 - JAN 13 and NOV 13 - JAN 14

Year	Child Care/ Substitute Care Personnel	Educational Personnel	Law Enforcement	Medical/ Mental Health Personnel	Mandated- Other	Social Service Personnel	Anonymous	Friends/ Neighbors/ Other Relatives	Non- Mandated- Other	Parent	Foster Parent	Total
Bronx												
2012/2013	53	1,356	324	385	25	902	349	330	505	171	0	4,400
2013/2014	49	1,462	436	424	25	965	330	353	594	193	0	4,831
% Change	-7.5%	7.8%	34.6%	10.1%	0.0%	7.0%	-5.4%	7.0%	17.6%	12.9%	--	9.8%
Brooklyn												
2012/2013	32	1,280	349	363	21	769	405	345	422	150	2	4,138
2013/2014	44	1,348	375	394	30	828	400	390	519	182	0	4,510
% Change	37.5%	5.3%	7.4%	8.5%	42.9%	7.7%	-1.2%	13.0%	23.0%	21.3%	--	9.0%
Manhattan												
2012/2013	41	588	289	213	23	530	238	174	318	101	5	2,520
2013/2014	24	494	248	233	13	455	166	178	303	103	0	2,217
% Change	-41.5%	-16.0%	-14.2%	9.4%	-43.5%	-14.2%	-30.3%	2.3%	-4.7%	2.0%	-100.0%	-12.0%
Queens												
2012/2013	23	983	270	227	15	520	245	215	241	106	1	2,846
2013/2014	26	1,076	284	271	22	559	212	216	302	121	1	3,090
% Change	13.0%	9.5%	5.2%	19.4%	46.7%	7.5%	-13.5%	0.5%	25.3%	14.2%	0.0%	8.6%
Staten Island												
2012/2013	7	268	45	72	2	95	83	59	54	40	0	725
2013/2014	2	276	57	77	4	105	77	66	56	37	0	757
% Change	-71.4%	3.0%	26.7%	6.9%	100.0%	10.5%	-7.2%	11.9%	3.7%	-7.5%	--	4.4%
OSI												
2012/2013	11	40	7	38	5	71	30	20	91	50	0	363
2013/2014	24	43	17	29	6	78	30	18	78	52	1	376
% Change	118.2%	7.5%	142.9%	-23.7%	20.0%	9.9%	0.0%	-10.0%	-14.3%	4.0%	--	3.6%
Other												
2012/2013	3	41	76	47	2	122	22	17	43	36	0	409
2013/2014	5	40	80	53	4	114	20	30	35	37	0	418
% Change	66.7%	-2.4%	5.3%	12.8%	100.0%	-6.6%	-9.1%	76.5%	-18.6%	2.8%	--	2.2%
Citywide												
2012/2013	170	4,556	1,360	1,345	93	3,009	1,372	1,160	1,674	654	8	15,401
2013/2014	174	4,739	1,497	1,481	104	3,104	1,235	1,251	1,887	725	2	16,199
% Change	2.4%	4.0%	10.1%	10.1%	11.8%	3.2%	-10.0%	7.8%	12.7%	10.9%	-75.0%	5.2%

Figure 3: SCR Allegations, NOV 13 – JAN 14



Total Allegations = 39,474

TABLE 3 - SCR Allegations, NOV 12 - JAN 13 and NOV 13 - JAN 14

Year	Physical Abuse	Educational Neglect	Lack of Medical Care	Neglect	Psychological Abuse	Sexual Abuse	Other	Total
Bronx								
2012/2013	1,347	1,394	495	6,957	69	232	1,602	12,096
2013/2014	1,263	1,318	490	6,944	62	204	1,498	11,779
% Change	-6.2%	-5.5%	-1.0%	-0.2%	-10.1%	-12.1%	-6.5%	-2.6%
Brooklyn								
2012/2013	1,320	1,075	423	6,470	66	238	1,530	11,122
2013/2014	1,370	1,144	405	6,883	63	194	1,395	11,454
% Change	3.8%	6.4%	-4.3%	6.4%	-4.5%	-18.5%	-8.8%	3.0%
Manhattan								
2012/2013	566	486	179	2891	28	68	667	4,885
2013/2014	510	396	164	2741	18	83	580	4,492
% Change	-9.9%	-18.5%	-8.4%	-5.2%	-35.7%	22.1%	-13.0%	-8.0%
Queens								
2012/2013	1,019	591	227	4,275	51	134	936	7,233
2013/2014	1,026	527	278	4,276	48	108	907	7,170
% Change	0.7%	-10.8%	22.5%	0.0%	-5.9%	-19.4%	-3.1%	-0.9%
Staten Island								
2012/2013	223	235	79	1,165	11	34	283	2,030
2013/2014	191	202	57	1,161	15	35	301	1,962
% Change	-14.3%	-14.0%	-27.8%	-0.3%	36.4%	2.9%	6.4%	-3.3%
OSI								
2012/2013	248	60	64	1,209	7	56	237	1,881
2013/2014	253	43	67	934	2	33	145	1,477
% Change	2.0%	-28.3%	4.7%	-22.7%	-71.4%	-41.1%	-38.8%	-21.5%
Other								
2012/2013	109	79	35	617	7	33	194	1,074
2013/2014	80	130	57	646	5	30	192	1,140
% Change	-26.6%	64.6%	62.9%	4.7%	-28.6%	-9.1%	-1.0%	6.1%
Citywide								
2012/2013	4,832	3,920	1,502	23,584	239	795	5,449	40,321
2013/2014	4,693	3,760	1,518	23,585	213	687	5,018	39,474
% Change	-2.9%	-4.1%	1.1%	0.0%	-10.9%	-13.6%	-7.9%	-2.1%

TABLE 4 - Purchased Preventive Cases Opened and Closed
January 2012 to January 2014

Month	Opened Cases	Closed Cases
2012		
Jan-12	870	629
Feb-12	889	835
Mar-12	944	991
Apr-12	997	870
May-12	1,117	979
Jun-12	965	869
Jul-12	853	979
Aug-12	917	1,007
Sep-12	727	900
Oct-12	875	915
Nov-12	738	702
Dec-12	938	871
2013		
Jan-13	960	884
Feb-13	873	916
Mar-13	962	1,171
Apr-13	940	988
May-13	864	1,337
Jun-13	863	780
Jul-13	868	1,004
Aug-13	802	1,084
Sep-13	844	724
Oct-13	933	765
Nov-13	901	685
Dec-13	1,106	552
2014		
Jan-14	983	640

**Table 5 - Referrals to Purchased Preventive Services by Source
January 2012 to January 2014**

Month	Total Referrals	Division of Child Protection	Foster Care Agencies	PPRS Transfer	School	Self	Other Sources*
2012							
Jan-12	1,431	66.5%	0.7%	8.5%	3.6%	3.8%	17.0%
Feb-12	1,043	78.2%	1.1%	9.0%	1.9%	6.7%	3.1%
Mar-12	1,525	73.6%	0.9%	6.0%	1.8%	3.9%	13.8%
Apr-12	1,370	72.8%	1.0%	9.4%	1.2%	4.2%	11.4%
May-12	1,463	70.9%	1.0%	7.6%	1.1%	4.4%	15.0%
Jun-12	1,279	73.8%	0.5%	5.9%	1.0%	4.7%	14.2%
Jul-12	1,308	77.4%	1.2%	7.0%	0.3%	3.7%	10.5%
Aug-12	1,391	74.0%	0.9%	11.7%	0.3%	2.9%	10.2%
Sep-12	1,110	70.5%	1.9%	9.6%	1.2%	5.0%	11.9%
Oct-12	1,159	61.1%	1.4%	12.6%	2.7%	4.9%	17.3%
Nov-12	1,106	67.0%	1.0%	9.9%	2.2%	4.7%	15.3%
Dec-12	1,206	68.7%	0.8%	5.8%	2.7%	5.6%	16.4%
CY 2012	15,391	71.3%	1.0%	8.5%	1.6%	4.5%	13.1%
2013							
Jan-13	1,474	74.1%	1.2%	7.3%	1.2%	3.7%	12.5%
Feb-13	1,308	75.8%	1.1%	8.0%	1.6%	2.9%	10.6%
Mar-13	1,270	73.5%	1.2%	6.7%	2.4%	3.9%	12.3%
Apr-13	1,421	77.9%	0.8%	7.4%	0.9%	3.0%	10.1%
May-13	1,320	68.4%	0.5%	10.2%	1.5%	3.8%	15.5%
Jun-13	953	69.2%	1.2%	9.4%	2.6%	5.0%	12.6%
Jul-13	1,014	66.3%	1.9%	14.4%	1.6%	3.9%	11.9%
Aug-13	1,212	70.5%	0.7%	11.8%	0.7%	4.7%	11.6%
Sep-13	1,262	64.0%	2.1%	11.3%	1.7%	6.7%	14.2%
Oct-13	1,319	61.0%	1.1%	9.0%	2.9%	7.5%	18.5%
Nov-13	1,249	55.9%	1.6%	10.5%	4.6%	9.2%	18.3%
Dec-13	1,464	62.2%	1.2%	8.2%	2.3%	9.2%	17.0%
2014							
Jan-14	1,537	70.0%	1.2%	6.6%	2.3%	5.8%	14.2%

*Other Community Sources includes the Department of Homeless Services, Family Court, FAP, Hospitals and Medical facilities, the NYC Housing Authority, PINS/DAS, Probation, and Sponsor Agencies.