



WORLD
TRADE
CENTER
HEALTH REGISTRY

9/11 and Beyond

Spring 2026

Message From the Director

A New Season, a Renewed Commitment



As we move into spring, a season of renewal, we're taking the opportunity to look forward. The World Trade Center (WTC) Health Registry has spent more than two decades documenting and understanding the long-term health impacts of 9/11. While our past work laid a strong foundation, the road ahead is just as critical.

In the coming months, we will expand outreach, launch crucial new research, and continue connecting enrollees with care through our Treatment Referral Program. We will also strengthen partnerships with researchers, clinicians, and community organizations to ensure that emerging

health concerns are identified and addressed. Our mission remains clear: to support the health and well-being of everyone affected by 9/11, today and into the future.

Sincerely,

Mark Farfel, ScD
Director

What's Ahead for the Treatment Referral Program?



Lydia Leon, Manager of the
Treatment Referral Program

The Treatment Referral Program (TRP) helps 9/11 survivors and responders apply to the WTC Health Program. Through the WTC Health Program, survivors and responders can get referrals to clinicians who specialize in 9/11-related conditions such as respiratory illnesses, gastrointestinal disorders, cancers, and mental health issues at no out-of-pocket cost. In 2026, we're continuing our outreach, including to our non-English-speaking enrollees, and strengthening follow-up services to make sure every enrollee receives timely, culturally competent care.

If you or someone you know may have a 9/11-related condition, call the TRP at **888-WTC-7848 (888-982-7848)**. TRP staff will help you determine your eligibility for the WTC Health Program and guide you through the application process.

Our Health Handouts Get a Makeover



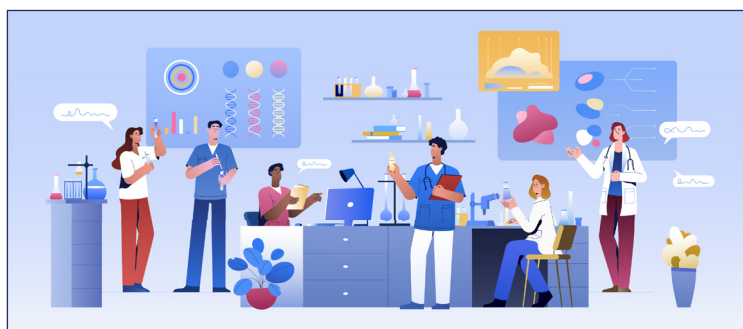
We have launched a new design for our health handouts! Health handouts are one-pagers that enrollees and their health care providers can use to identify conditions that may have been caused by 9/11 exposure.

We encourage enrollees to read our health handouts and share them with their providers. To find them, visit nyc.gov/911health/materials.

The Future of the Registry Seen Through Past Research

The Registry maintains an archive of its publications online. These publications offer a comprehensive look at our work since 2002. Visit nyc.gov/911health/research to find:

- Past e-newsletters, which feature health updates, research highlights, and enrollee resources
- Peer-reviewed research papers written by Registry scientists, which cover topics such as mental health and respiratory conditions
- Annual reports, which provide year-by-year snapshots of milestones, findings, and program impacts



Spotlight: Upcoming Research You'll Want to Follow

The Registry continues to explore how 9/11 exposure affects people's health over time. Here are a few priority studies we're currently working on:



Cognitive Aging in 9/11 Survivors: This long-term study explores how 9/11 exposure may impact survivors' memory and brain health.



Post-Traumatic Growth: Trauma can lead people to develop coping strategies and uncover resilience, resulting in lasting positive change. This long-term study explores positive psychological growth in enrollees after experiencing trauma related to 9/11 exposure.



Cancer Survivorship and Quality of Life: This new study focuses on enrollees living with cancer, including their mental health and daily functioning.

With this research, we aim to uncover patterns, identify risks, and improve support for those who were impacted by 9/11. Look out for updates on these studies in future newsletters.

Why Long-Term 9/11 Health Research Is Essential



Even after more than two decades since 9/11, the Registry's work remains as important as ever. For example, many 9/11-related conditions do not appear immediately, and some develop slowly or change over time.

Additionally, as enrollees get older, their health needs evolve. Long-term research allows us to identify these delayed outcomes and better understand how 9/11 exposure, trauma, and aging interact over time, as well as refine screening recommendations, treatment approaches, and outreach efforts.

Long-term research also honors the commitment made to people affected by 9/11. By continuing to listen, learn, and study their experiences, the Registry ensures that the full health story of 9/11 is understood — not just for the past, but for the future.

Coming Soon: New Videos on 9/11's Lasting Impact

In the coming months, we will release a series of videos highlighting ongoing research that demonstrates the long-term health effects of 9/11 across individuals and families. These videos help make complex topics more accessible in our continued effort to deepen people's understanding of and raise awareness about 9/11-related conditions and reinforce how enrollees' participation in our surveys is vital to our research.

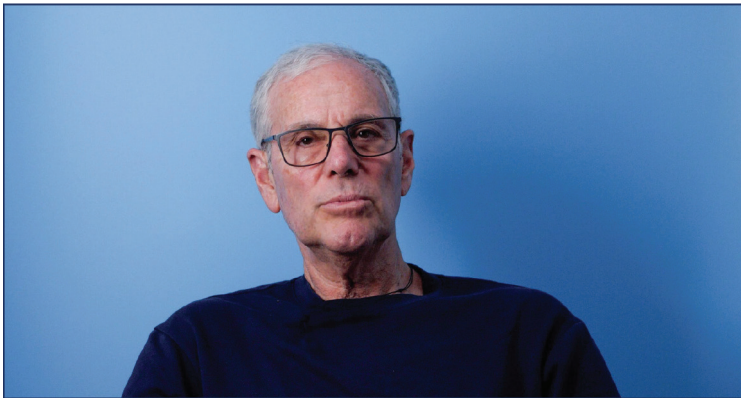
Watch our research videos at nyc.gov/911health/videos.



Enrollee Voices: Putting a Face to the Data

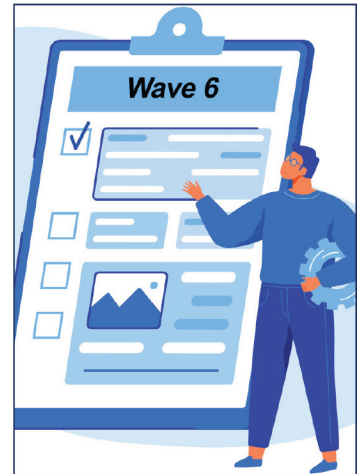
Behind every statistic is a person whose life was forever changed by 9/11. Our enrollee testimonial videos offer a powerful look into the long-term physical and mental health impacts of 9/11. In our videos, enrollees talk about living with 9/11-related conditions and encourage others to seek care and support. These personal stories give a voice to the thousands of people affected by the disaster and humanize the research we conduct.

Watch our testimonial videos at nyc.gov/911health/videos.



Wave 6 Survey Completed

We are pleased to announce the completion of the Wave 6 survey! We are grateful to the enrollees who took the time to share their experiences. Your responses are essential in advancing our understanding of the long-term health impacts of 9/11.



The Wave 6 survey was sent specifically to enrollees who completed the Wave 1, Wave 2, and either Wave 3 or Wave 4 surveys. This approach allowed us to build on previous responses and maintain consistency in our research.

If you did not receive the Wave 6 survey, please know your participation in future surveys will be extremely valuable in shaping our findings. We are committed to including all enrollees in future research, outreach, and program updates.

Cohort Longitudinal Engagement and Retention Forum

Many other post-disaster cohorts experience similar challenges and successes to the Registry and often consult with us on how to create and maintain a long-term health registry of their own. In 2023, we launched the Cohort Longitudinal Engagement and Retention (CLEAR) Forum to provide a space for cohorts from around the world to exchange lessons learned in their work, share practical strategies, and build a community of support. In only three years, the CLEAR Forum has grown to include 18 cohorts worldwide, with discussions now covering topics such as communication strategies, updating contact information, and celebrating milestones.

CLEAR Forum Growth

Number of Cohorts



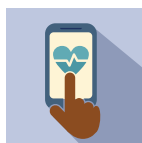
On Our Radar: Spring and Summer 2026



In 2026, the Registry will continue to expand its efforts to keep enrollees informed, involved, and connected, such as by:

- Inviting enrollees to take part in upcoming health surveys that help shape Registry research
- Sharing study findings through easy-to-understand videos, graphics, and summaries
- Staying connected with enrollees online via emails, focus groups, and social media
- Highlighting how enrollee participation directly contributes to research by sharing published Registry research papers
- Hosting activities for the Registry's 25th anniversary, including a collaboration with the 9/11 Memorial & Museum

Stay Connected



Take Our Surveys

Many Registry enrollees have responded to our surveys. The information enrollees provide helps us respond to their health needs and conduct research on 9/11-related conditions. Registry research findings also help inform health care policies, including federal support for the WTC Health Program.



Read Our Previous e-Newsletters

Read our previous e-newsletters for research findings, past 9/11-related updates, and enrollee profiles. For more information, email wtchreletter@health.nyc.gov.



Use Our Health Data Tools

Health data tools, including copies of our major and specialized surveys, are available. For confidentiality, personal information has been removed. To access our health data tools, visit nyc.gov/911health/datatools.



Update Your Contact Information

Go paperless and receive Registry communications via email. To update your contact information, call **866-692-9827**, email wtchr@health.nyc.gov, or visit a816-healthpsi.nyc.gov/wtchr.

Mission Statement

With ongoing support from the National Institute for Occupational Safety and Health, the Registry continues its mission to:

- Identify and track the long-term physical and mental health effects of 9/11 and gaps in care for 9/11-related health conditions
- Share findings and recommendations with enrollees, the public, the WTC Health Program, and policymakers
- Respond to enrollees' health concerns and refer enrollees to the WTC Health Program
- Offer guidance to public health professionals on planning for future emergencies

To find this e-newsletter in English, Spanish, Simplified Chinese, and Traditional Chinese, visit nyc.gov/911health/newsletter. To contact the Registry, email wtchr@health.nyc.gov.