

Quarterly Meeting

June 16, 2011 • 8:30 AM

The Levin Institute, 116 East 55th Street
New York, New York





**NEW YORK CITY WORKFORCE INVESTMENT BOARD
BOARD MEMBERS**

Kathleen Kearns Chair Continuum Health Partners		Horace Barker Vice Chair Morgan Stanley Smith Barney
William Abramson Buchbinder & Warren	Buddy Gwin American Indian Community House	George Ntim Marriott Marquis
Les Bluestone Blue Sea Development Company	Sarah Holloway Hudson Heights Partners	Lilliam Barrios-Paoli NYC Department for the Aging
Marion Boykin Time Warner Cable	Brenda Jenifer South Bronx Job Corps Center /ResCare	Tom Pendleton NYC Department of Education
Ken Dircks	Deborah King 1199SEIU Training & Employment Funds	Seth Pinsky NYC Economic Development Corporation
Robert Doar NYC Human Resources Administration	Marc Leff Maimonides Medical Center	Robert Purga NYS Department of Education
Arnold Dorin ACCES-VR Adult Career and Continuing Educational Services- Vocational Rehabilitation	Rae Linefsky C3 Consulting	Jocelynn Rainey Brooklyn Navy Yard Industrial Park
Mark Elliott Economic Mobility Corporation	Richard Mast Bloomingdale's	John B. Rhea NYC Housing Authority
Patricia Fahy NYS Department of Labor	Joseph McDermott Consortium for Worker Education	Stuart Saft Dewey & LeBoeuf
Reg Foster IBM Corporation	John Mogulescu City University of New York	Deirdre Scott Bronx Council on the Arts
Ester Fuchs Columbia University	Thomas Moloney Clearly Gottlieb Steen & Hamilton LLP	Robert Walsh NYC Department of Small Business Services
Edward Jay Goldberg Macy's	Jeanne Mullgrav NYC Department of Youth & Community Development	Veronica White NYC Center for Economic Opportunity
Colvin Grannum Bedford Stuyvesant Restoration Corporation	Jesse Nieblas CVS	Richard Windram Verizon



QUARTERLY MEETING

Levin Institute
116 East 55th Street, New York, New York

Thursday, June 16th, 2011
8:30 – 10:00 AM

AGENDA

- 8:00 Coffee and Light Refreshments
- 8:30 Welcome and Opening Remarks Kathleen Kearns, WIB Chair
- Action Item:
- December 7, 2010 Meeting Minutes
- 8:40 Update on WIB Priorities and Activities
- Committee Chairs:
Kathleen Kearns, Executive
Horace Barker, Workforce Policy
Les Bluestone, Employer Engagement
Reg Foster, Youth Council
- Phil Weinberg, WIB President
- 9:00 Transformation to a Business-Driven Workforce System: Looking Forward
- Ester Fuchs,
WIB Member, Columbia University
- Video screening: *Putting New Yorkers to Work*
- Angie Kamath, Deputy Commissioner
Jackie Mallon, Assistant Commissioner
NYC Department of Small Business Services
- 9:30 Trends and Outlook for the Economy and Labor Market
- Keith Hall, Commissioner
U.S. Bureau of Labor Statistics
- Lesley Hirsch, Director
NYC Labor Market Information Service
- 10:00 Meeting Closing and Adjournment Kathleen Kearns, WIB Chair

Next WIB Meeting:
Wednesday, September 21st, 2011



QUARTERLY MEETING

Levin Institute
116 East 55th Street, New York, New York

Thursday, June 16, 2011

8:30 – 10:00 AM

TABLE OF CONTENTS

Tab	Agenda Item and Corresponding Material
1	<ul style="list-style-type: none"> • March 23, 2011 Meeting Minutes • New Member Biography: Jocelyne Rainey, Brooklyn Navy Yard • WIB Intern Biography: Christina Burgess
2	<p><u>Memos from WIB Committee Chairs:</u></p> <ul style="list-style-type: none"> • Executive Committee Memo • Employer Engagement Memo • Workforce Policy Memo • Youth Council Memo <ul style="list-style-type: none"> • WIB President Memo to Board Members • WIB Quarterly Performance Dashboard (January – March 2011)
3	<ul style="list-style-type: none"> • Summary of Strategic Initiatives: NYC Department of Small Business Services • Overview of New York City Business Solutions
4	<ul style="list-style-type: none"> • Speaker Biography: Keith Hall, U.S. Bureau of Labor Statistics • Presentation from Keith Hall: <i>The Economy Today</i> • NYC Labor Market Information Service: Overview and Monthly NYC Jobs Report
5	<ul style="list-style-type: none"> • NYC Department of Small Business Services: Commissioner Update Memo • NYC Department of Youth & Community Development: Commissioner Update Memo



QUARTERLY MEETING

Levin Institute
116 East 55th Street, New York, New York

Wednesday, March 23, 2011
8:30 – 10:00 AM

MINUTES

Board Members Present:

Bill Abramson	Deborah King	Maria Torres
Horace Barker	Rae Linefsky	Deirdre Scott
Les Bluestone	Richard Mast	Maria Serrano
Marion Boykin	Joe McDermott	Ray Singleton
Arnold Dorin	John Mogulescu	Robert Walsh
Patricia Fahy	Jeanne Mullgrav	Veronica White
Reg Foster	Jesse Nieblas	Richard Windram
Colvin Grannum	Tom Pendleton	
Kathy Kearns	Robert Purga	

Guests Present:

David Berman	Lesley Hirsch	Kelly Richarson
Megan Burke	Carl Hum	Sara Schlossberg
Dansha Cai	Brook Jackson	Kate Schwab
Cesar Cardenas	Nandi Jones-Clement	Jenny Shartstein
Chris Cesarani	Angie Kamath	Robert Steel
Alan Cheng	Megan Keenan	Tim Sullivan
Joe Christo	Lea Kilraine	Jennifer Tavis
Roe Falcone	Nnenna Lynch	John Twomey
Joe Farrell	Suzanne Lynn	Sade Vito
Dale Grant	Diana Mao	Phil Weinberg
Susan Haskell	John Moye	Matt White
Bret Halverson	Marty Oesterreich	
Bruce Herman	Deldreana Peterkin	

Approval of Minutes

The minutes of the meeting of the New York City Workforce Investment Board (WIB) were approved.

Chairman's Report

Ms. Kearns welcomed the Board and provided members with an overview of the meeting agenda. She was joined by WIB President Phil Weinberg, who provided an update on some of

the key activities that have advanced the WIB's strategic priorities since the Board's previous meeting on December 7th, 2010. Mr. Weinberg described how the WIB led on key policy issues for NYC Workforce System and the committees took action to strengthen the WIA system, with particular emphasis on advocacy, business engagement and expansion of the Workforce1 Career Center system.

Building New York's Economy

Next SBS Commissioner Robert Walsh introduced Deputy Mayor Robert Steel, the keynote speaker of the morning. Deputy Mayor Steel provided the Board with an update on the Bloomberg Administration's efforts to get New Yorkers back to work, focusing on four initiatives and how the WIB's activities fit in with the broader job creation agenda. Four key initiatives include,

1. Making it easier for businesses to open, expand and prosper in New York;
2. Supporting small businesses;
3. Increasing skill development and job placement; and
4. Supporting the new and emerging industries that will be the largest engines of job creation going forward

As Mr. Steel stated, "Businesses have to be the primary engine of job creation, but we are also focused on helping out-of-work New Yorkers find opportunities that do exist and build the skills employers are hiring for *now*". Following the remarks, Ms. Kearns facilitated a discussion between Mr. Steel and the WIB members.

Committee Updates

Horace Barker, Chair of the Workforce Policy Committee, detailed the Committee's discussions regarding the Workforce1 expansion initiative with Committee members and the SBS workforce team. He also informed the Board of the committee's action to fight proposed federal cuts to Workforce Investment Act programs, including a letter to Senators Charles Schumer and Kirsten Gillibrand proposed by the Workforce Policy Committee sent by Mr. Barker and WIB Chair Kathy Kearns on behalf of the Board.

Next, Les Bluestone, Chair of the Employer Engagement Committee, shared that on March 2, Richard Mast of Bloomingdale's hosted the second Employer Engagement Committee at their midtown store. At the Committee meeting, the Board heard from Richard Mast and Michelle Pogue of Bloomingdale's about their experience with the Summer Youth Employment Program (SYEP). NYC Department of Youth and Community Development (DYCD) presented to the Committee about the SYEP fundraising initiative being administered by the NYC Mayor's Fund. The Board also heard from NYC Department of Small Business Services about NYC Business Solutions Recruitment.

Next, Kathy Kearns, Chair of the Executive Committee, informed the Board that at the recent Executive Committee meeting, a resolution was approved for the procurement of vendors to operate the Workforce1 Career Centers for new three-year terms. Also at the meeting, the Committee committed to assist in marketing an initiative to enlist businesses to fund the Summer Youth Employment Program in New York City. She directed members to the Committee report in the meeting materials

Finally, Reg Foster, Chair of the Youth Council shared with the shared with members the status of State funding for the 2011 Summer Youth Employment Program (SYEP) and for programs funded through the federal Workforce Investment Act.

Partnering with Businesses

Following the committee updates, Jeanne Mullgrav, Commissioner at the NYC Department of Youth and Community Development (DYCD), made a presentation on the City's Summer Youth Employment Program (SYEP), citing the scale and advancement of the City's program in recent years, as well as the current federal and state funding challenges. In particular, she focused on an initiative to enlist additional private sector investment in SYEP for the coming summer. Jenny Sharfstein of the Mayor's Fund to Advance New York City joined Commissioner Mullgrav in providing an overview of fundraising activity to date and marketing materials for the SYEP campaign. WIB Member Jesse Nieblas from CVS shared her company's experiences with SYEP, advocating the benefits to both CVS and to the youth participants. Following these comments, WIB President Phil Weinberg urged WIB members to send the marketing materials to their business networks and to make corporate commitments to SYEP.

Conclusion

Following the business described above, the meeting was adjourned. Ms. Kearns announced that the next quarterly WIB meeting would be held on June 16, 2011.



Jocelynn Rainey Biography

Jocelynn Rainey is the Vice President of Human Resources for the Brooklyn Navy Yard Corporation (BNYDC). BNYDC is a not-for-profit corporation that manages and develops the Brooklyn Navy Yard as an urban industrial park. Jocelynn has successfully led the human resources function in the for-profit and non-profit sectors for over 15 years. In 1992, Jocelynn began her career with Independent Living Association, a non-profit health care agency located in Brooklyn New York as the Director of Training and Development. Subsequently, she then entered the for-profit sector as the Regional Human Resources Representative with industry giant, Boar's Head Provisions. Prior to her most current position, she was the Human Resources Director for specialty food retailer, Agata & Valentina.

As the Vice President of Human Resources, Jocelynn is responsible for all human resources activities at the Brooklyn Navy Yard. Jocelynn is a member of several community based organizations and with her husband is an active supporter of the Brooklyn Museum.

Jocelynn holds a B.S. degree from Southern Connecticut University and a M.S. degree from Audrey Cohen College. Jocelynn resides in the Bedford Stuyvesant section of Brooklyn with her husband, Dr. Perry C. Rainey, an administrator with the NYC Department of Education and their two sons.



Christina Burgess Biography

As the Policy and Research Intern, Christina will be supporting WIB staff in state and federal advocacy efforts, the collection and dissemination of workforce data, and other relevant projects. Christina is currently pursuing a Masters in Public Affairs with a Domestic Policy concentration at the Woodrow Wilson School of Public and International Affairs at Princeton University. Prior to graduate school, Christina spent five years in San Francisco at Jumpstart for Young Children, a national early education organization. She began at Jumpstart as an AmeriCorps VISTA member, followed by two years as a Site Manager at Saint Mary's College of CA, mentoring college students to serve in low-income preschools in Oakland, CA. Thereafter, she directed Jumpstart's Early Literacy Initiative, a partnership with the City of San Francisco which strives to raise awareness about the importance of early education through grass-roots community building. Christina has BA from Boston College.

Memorandum

To: NYC Workforce Investment Board Members
From: Kathleen Kearns, Chair, NYC Workforce Investment Board
Date: June 16th, 2011
Re: Executive Committee Quarterly Report

The purpose of this memo is to update the NYC Workforce Investment Board (WIB) Members on key activities of the Executive Committee since the Board's previous meeting on March 23rd, 2011.

1. Committee Members

Kathleen Kearns (Chair), Horace Barker, Les Bluestone, Mark Elliott, Reg Foster, Rob Walsh

2. Key Activities

The Executive Committee conducted the following Board business during its second quarterly meeting of 2011 on June 8th:

- **The Committee discussed and approved a Board Resolution to approve the 2012 Workforce Investment Act (WIA) Adult and Dislocated Worker budget for New York City.** The \$40.8 million budget, administered by the Department of Small Business Services, will support the agency's core workforce development objectives for 2011, including achieving 35,000 job placements, increasing mid-level opportunities for jobseekers, improving customer experience, and establishing a new center in the Bronx. A combination of cost saving measures taken over the past year and supplemental funding received from New York State helped to mitigate against a 7.2% reduction in New York City's federal WIA Adult and Dislocated Worker allocation for the fiscal year.
- **The Committee received an overview of the WIA Youth budget from Suzanne Lynn, Deputy Commissioner of the Department of Youth and Community Development.** New York City's WIA Youth funding of \$22.2 million is 1.8% above last year's levels. Suzanne was joined by Alan Cheng from DYCD who provided an overview of the Summer Youth Employment Program (SYEP), which is projecting a budget of \$36.2 million this summer, 7% of which is funded through WIA. Alan provided an update on Mayor Bloomberg's campaign to enlist private sector investment in SYEP this year, as well as the potential for additional SYEP grant funds from New York State through the Summer Jobs Express! initiative.
- **The Committee received a status update on Board membership**, including recent departures (Robert Battista, Bill Bollbach, Charles Callahan and Robert Reffkin) and additions (Brenda Jenifer and Jocelyne Rainey). Member discussed strategies to recruit additional business members, with particular emphasis on candidates representing Staten Island, small business owners, and from sectors such as finance, transportation and utilities.

3. Next Steps

The Committee is scheduled to meet next on July 27th, 2011. The Committee will be actively recruiting new members and welcomes recommendations from all Board members.

Memorandum

To: NYC Workforce Investment Board Members
From: Les Bluestone, Employer Engagement Committee Chair, NYC WIB
Date: June 12, 2011
Re: Employer Engagement Committee Quarterly Report

The purpose of this memo is to inform NYC Workforce Investment Board (WIB) Members on the activities of the Employer Engagement Committee since the Board's previous meeting which was on March 23, 2011.

1. Committee Members

- Chair – Les Bluestone, Blue Sea Development
- Marion Boykin, Time Warner Cable
- Nikki Georges-Clapp, EDC
- Marc Leff, Maimonides Medical Center
- Rae Linefsky, C3 Consulting
- Jackie Mallon, SBS
- Richard Mast, Bloomingdale's
- Daphne Montanez, DYCD
- Jesse Nieblas, CVS
- George Ntim, Marriott Marquis Times Square
- Michelle Pinnock, NYCHA
- Ray Singleton, HRA

2. Key Activities

The Committee conducted the following business during the first and second quarter of 2011:

The following priorities and role of the committee for the first and second quarters include:

- Promote NYC's workforce system in business community by serving as ambassadors to external audiences and potential partners. In particular, have committee members advocate to their networks the Department of Small Business (SBS): NYC Business Solutions Recruitment Services. This could include having members create opportunities for NYC Business Solutions staff to hold presentations to highlight their services and recruit for additional employers to make use of them.
- Increase utilization of the public workforce system by WIB members. The goal is to have 100% utilization by the current business members of the Board.
- Mobilize committee members to fundraise from the private sector for the Summer Youth Employment Program (SYEP).

During the WIB's March board meeting hosted by Richard Mast at Bloomingdale's, the NYC Department of Youth and Community Development (DYCD) and the NYC Mayor's fund presented the campaign to WIB members, which resulted in several WIB member organizations signing on and donating, including CVS, Bloomingdale's and Verizon. With the help of the Mayor's Fund to Advance New York City, a new marketing campaign was launched to encourage businesses to donate funds in support of SYEP slots this summer.

Since the meeting, several Committee members have connected with the NYC Business Solutions Recruitment team to learn further about potential partnership opportunities. Committee members were asked to approach their personal networks about the NYC Business Solutions Recruitment services and fundraise for the SYEP program. Outreach to personal networks has been challenging and any feedback on how to generate involvement is encouraged. Outreach has been made to several business groups and associations to create additional platforms for education on service delivery, including the Brooklyn Chamber of Commerce and other boroughs as well as the Association for a Better New York (ABNY).

3. Next Steps

The next Committee meeting is being scheduled for July. Committee members are asked to approach their personal networks about the NYC Business Solutions Recruitment services. Les and Lea will be contacting individuals for feedback on methods of outreach and to solicit for referrals from within their networks. Additionally outreach to business organizations and groups continue and we are planning to give a presentation at an upcoming Brooklyn Chamber of Commerce meeting. Please contact myself or Lea Kilraine (lkilraine@sbs.nyc.gov) to learn more about business development services or other enquires, etc.

Memorandum

To: NYC Workforce Investment Board Members
From: Horace Barker, Workforce Policy Committee Chair, NYC WIB
Date: June 16, 2011
Re: Workforce Policy Committee Quarterly Report

The purpose of this memo is to inform the Members of the NYC Workforce Investment Board (WIB) on the activities of the Workforce Policy Committee since the Board's previous meeting which was on March 23, 2011.

1. Committee Members

- Chair – Horace Barker, MorganStanley SmithBarney
- William Abramson, Buchbinder Warren
- Richard Windram, Verizon
- Marc Leff, Maimonides Medical Center
- Patricia Fahy, NYSDOL
- Colvin Grannum, Bedford Stuyvesant Restoration
- Deborah King, SEIU 1199 Training Funds
- Joseph McDermott, CWE
- John Mogulescu, CUNY
- Ken Dircks

2. Key Activities

- **The Committee reviewed board actions taken and outcomes of proposed federal funding cuts to Workforce Investment Act programs.** The Fiscal Year 2011 spending bill that passed the House of Representatives in February (HR1) threatened to “zero out” WIA programs nationwide effective July 1, 2011 through June 30, 2012. Such cuts could have led to the forced closure of WIA-funded Workforce1 Career Centers and NYC Business Solutions Centers starting July 2011. In February and March, 10 NYC WIB business members reached out individually to Senators Charles Schumer and Kirsten Gillibrand demanding restoration of WIA spending in any final federal spending bill. The final spending bill signed into law in April included a 10% cut to WIA programs nationwide.
- **The Committee received a green jobs update from Lesley Hirsch of the CUNY Graduate Center/NYC Labor Market Information Service.** Lesley Hirsch delivered an insightful overview of the preliminary findings from the NYS Green Jobs Research Project. The main lesson to date from this research project is that green practices are becoming standard practices and that they are affecting employer demand and educational and training programs that meet that demand. Lesley's office is working closely with the WIB and other offices, including the CUNY Offices of Institutional Research and Adult and Continuing Education in undertaking this Green Jobs Project.
- **The Committee engaged in constructive dialogue with Sara Schlossberg of the Department of Small Business Services workforce development division, regarding new SBS training policy.** Sara Schlossberg wrapped up the meeting with a practical presentation on recent agency thinking that will refocus local training policy on investments and interventions that have consistently led to hiring businesses being more competitive and to wage gains for job-seeker and incumbent worker trainees.

3. Next Steps

There are no action items for the Committee at the present time.

MEMORANDUM

To: Workforce Investment Board Members

From: Reg Foster, Youth Council Chair

Date: June 9, 2011

Re: Youth Council Meeting Update

Summary

The Youth Council of the NYC Workforce Investment Board (WIB) met with the NYC Youth Board on June 1, 2011. The meeting took place at the National Center for Children in Poverty (NCCP), Mailman School of Public Health at Columbia University. The feature presentation focused on the 2010 NCCP report, "A Profile of Disconnected Young Adults". Also joining the meeting was Executive Deputy Commissioner Mario Musolino of the New York State Department of Labor who shared the state's strategic outlook for youth workforce development. Before the feature presentation, Commissioner Mullgrav delivered budget updates. Action items for the day included the approval of amended language to the Youth Board by-laws, Article II, Members, Section 1, Appointment, for the purpose of making explicit the board's long standing commitment to transparency and accountability. The next quarterly meeting will take place September 14 at Bloomberg L.P.

Meeting Highlights

The following was discussed.

Budget Updates

- Commissioner Mullgrav noted for the members that DYCD's Fiscal 2012 Executive Budget is \$259.2 million. \$153.9 million is city tax levy, \$74.17 million is federal, \$5.6 million is state and \$25.5 million is from other funds. With the passage of the federal Full-Year Continuing Appropriations Act, which covers the remainder of federal Fiscal Year 2011, Workforce Investment Act funding will be \$825.9 million for youth formula grants. We were informed that this represents a \$98 million (or 10%) reduction from the prior fiscal year. However, DYCD anticipates that a significant portion of the funding reduction will come from the statewide activities allocation, which will minimize the impact to the formula grants.

A Profile of Disconnected Young Adults

- Vanessa Wight, Phd and co-author of the NCCP report, “A Profile of Disconnected Young Adults”, presented a comparison of national findings on disconnected youth ages 18-24 with the same segment of the youth population in New York City. Utilizing data from the Census Bureau’s American Community Survey, Ms. Wight highlighted the following: disconnection among young adults is apparently on the rise, disconnection is more prevalent among racial/ethnic minorities, and disconnected young adults experience a range of factors that only amplify their precarious economic standing. She also highlighted some predictors, such as poor socioemotional health being associated with being disconnected in young adulthood.

New York State Strategic Outlook for Youth Workforce Development

- New York State Department of Labor (NYSDOL) Executive Deputy Commissioner Mario Musolino joined the meeting to highlight the state’s strategic outlook on youth workforce development. He expressed that despite a challenging fiscal climate, the state is committed to finding ways to leverage existing resources, partnerships and creative approaches in support of the state’s youth workforce development. In particular he noted three priorities for the NYSDOL: credentials with value, career pathways that are meaningful and providing tools that help providers and young people help themselves, such as CareerZone. Mr. Musolino also noted the “Summer Jobs Express” competitive grant of an additional \$5.5 million for a total of \$21 million in state funds committed to summer youth employment announced by the Governor on May 27.

Finally, I encourage you all to read Commissioner Mullgrav’s Youth Workforce Development Update Memorandum for more information on New York City youth development programs and initiatives.

NYC Department of Small Business Services (SBS)

Workforce1 Career Centers (WF1CC)

- In the first quarter of 2011, the Workforce1 system achieved 6,755 job placements, which is 105% of the target for the quarter and is down by 7% from Q1 2010; the decrease from last year is due to transition of vendors operating several WF1CC's and system wide strategic shift toward higher wage jobs.
- Median wages for first-quarter placements were at \$10.00 per hour, up from \$9.00 per hour in Q1 2010.

Workforce1 Career Centers Snapshot	
<p>System Wide Total Placements: 2011 (Q1): 6,755 2010 (Q1): 7,235 2010: 31,390 2009: 25,128 2008: 17,239</p>	<p>System Wide Traffic (unique customers): 2011 (Q1): 39,813 2010: 148,244 2009: 160,000 2008: 107,599</p>
<p>Median Wage: 2011 (Q1): \$10.00 2010 (Q1): \$9.00 2010: \$9.62 2009: \$9.00 2008: \$9.25</p>	<p>Customer Demographics: Age Breakdown: 2011 (Q1) Age 18-24: 23.4% Age 25-49: 57.4% Age 50+: 19.2%</p>
<p>Full-time/Part-time Split: 2011 (Q1): 66% Full-time, 34% Part-time 2010 (Q1): 71% Full-time, 29% Part-time *Full-time: 30 hours a week or more Part-time: Less than 30 hours a week</p>	<p>Education Level: 2011 (Q1): Less than High School diploma: 10% High School diploma or GED: 37% Some College/Vocational (no degree): 23% Vocational/Associate/or Bachelor's: 26% Master's/or Doctoral: 3%</p>

WF1CC Job Placements by Sector, 2011 (Q1)

- About two thirds of all placement activity was concentrated in four sectors: Retail, Health Care & Social Assistance, Admin/Support Services (including Security Services), and Other (which includes IT, finance and insurance, among others).

Sector	Job Placements	Percentage of Total Job Placements	Median Wage (Hourly)	Average Hours Worked (Weekly)
Retail Trade	1,378	20%	\$8.25	30
Health Care & Social Assistance	1,232	18%	\$9.75	31
Other*	883	14%	\$13.38	34
Administrative, Support, Waste Management and Remediation Services	858	13%	\$10.00	33
Accommodation & Food Services	727	11%	\$10.00	31

NYC WIB Quarterly Performance Dashboard

Quarter 1 (Q1): January – March 2011



Transportation & Warehousing	524	8%	\$11.00	31
Other Services (except Public Administration)	471	7%	\$12.00	33
Professional, Scientific, & Technical Services	381	6%	\$10.00	32
Educational Services	300	4%	\$15.00	25

*This includes Information, Finance & Insurance, and All Additional Sectors

Training

Top Five Individual Training Grant (ITG) Occupations in 2011 (Q1)

- The decline in New York City's Workforce Investment Act allocation from 2010 to 2011 accounts for the large decrease in number of ITGs issued in the first quarter of 2011.
- Of all ITG customers completing training in October 2010 to March 2011, Centers achieved 394 placements and promotions in January to March.*

Occupations: 2011 (Q1)	Total Issued	Occupations: 2010 (Q1)	Total Issued
Security Guards	84	Security Guards	600
Nursing Aides, Orderlies, And Attendants (CNA)	69	Nursing Aides, Orderlies, And Attendants (CNA)	329
Bus Drivers, School	56	Bus Drivers, School	279
Bookkeeping, Accounting, And Auditing Clerks	42	Bookkeeping, Accounting, And Auditing Clerks	205
Executive Secretaries And Administrative Assistants	21	Graphic Designers	166

ITGs	2011 (Q1)	2010 (Q1)	2010	2009	2008
Total Issued	424	2,606	5,951	10,523	4,698
Value	\$853,104	\$4,648,276	\$10,908,046	\$21,060,121	\$11,069,263

*Of customers to complete ITG-funded training in Q1 2011. This is not the same cohort of customers who received ITGs in Q1 2011.

NYC Business Solutions Training Funds

Training Funds January - May 2011 Projections

- 6 training funds awards were made to businesses in four boroughs, representing five different sectors: Administrative and Support; Construction; Information/Media; Manufacturing, and Transportation.
- Among the 116 incumbent workers to be trained, 71.6 percent currently earn an hourly wage less than \$15.

Metrics	Projections January 2011-May 2011
Number of companies awarded	6
Number of trainees	131
Employer contribution leveraged	\$147,972
Funding awarded	\$238,528
Average projected wage gain (among trainees with wage gain)	11.5% (for 116 trainees)
Percent of incumbent trainees to receive wage increase	100% (of 116 incumbent employees)

*The numbers in the tables are projections from the awarded proposals submitted in February 2011.

NYC Business Solutions Centers

System Wide Performance, 2011 (Q1)

- Centers helped small businesses obtain 198 loans, achieving 133% of the system's quarterly target (175) and a 28% increase over the same period in 2010.
- 133 new businesses launched as a direct result of Center assistance. Collectively, the Centers achieved 149% of the system's quarterly target (133) and a 233% increase over the number of business launched during the same period in 2010.
- Centers achieved 1,130 employer commitments, which represent 114% of the system's quarterly target of 990, and a 22% increase over the same period in 2010.
- Centers achieved 992 small business employer commitments. This represents a significant proportion (88%) of the total employer commitments and a 92% increase over the same period in 2010.

Services	2011 (Q1)	% of 2011 (Q1) Goal Achieved	2010 (Q1)
Financing: Loans Awarded	198	133%	155
Recruitment: Total Employer Commitments	1,130	114%	924
Small Business Employer Commitments	992	N/A	517
Business Launch: New Businesses Launched	133	149%	57
Legal Assistance: # Customers Receiving Legal Services	32	N/A	91
M/WBE: Certifications Achieved	16	N/A	25

NYC Department of Youth and Community Development (DYCD)

Program Metrics 2010

- In 2010, the City received more than 143,000 applications for roughly 35,000 slots in our Summer Youth Employment Program (SYEP). Largely due to State funding reductions, current funding will support only approximately 23,000 slots this coming summer. To better meet the demand for summer jobs, the Mayor's Fund to Advance New York City has agreed to assist DYCD in raising private funds for SYEP and work on advertising and fundraising campaigns is now underway. Last summer, about 1,500 slots were provided thanks to \$2 million in private contributions – it is hoped that private funding will exceed that level this year.
- Recently, DYCD piloted a wireless worksite monitoring tool utilizing smartphones and portable computing devices. DYCD program staff conducted approximately 6,000 program visits in 2010, and 400 site visit reports were completed using the wireless devices. The pilot helped to provide real time monitoring information as staff was able to complete reports and submit them while still in the field. The electronic reports also served to reduce paperwork.

Summer Youth Employment Program (SYEP)	2011 (Q1)	2010	2009
Applications Received	N/A	143,169	139,597
Total Worksites	N/A	5,780	8,688
Total Enrollment	N/A	35,725	52,255
ARRA Funded Enrollment*	N/A	8,211	14,262

*This includes American Recovery & Reinvestment Act (ARRA) – Community Services Block Grant Program (CSBG) funding. This does not include any ARRA – WIA funding.

In-School Youth (ISY)*	2011 (Q1)	2010
Workforce Investment Act (WIA) ISY Enrollment**	2	392 (October – December 2010)
WIA ISY Enrollment (Cumulative FY11)	579	577
WIA ISY Enrollment Goal FY11	579	577

*ISY Programs provide services to eligible juniors and seniors in high school. ISY services include objective assessments, creating individual service strategies, counseling, work readiness skill building activities, basic skills attainment instruction and other youth related mentoring services.

**Enrollment for the 2010 Program took place from September - December 2010 and occurs once a year.

- During the prior period, October through December 2010, the top three training industries OSY participants were enrolled in were information services (24%), healthcare and social assistance (23%), and construction (15%). Emergency Medical Technician, Graphic Design, and Green Construction are other occupational trainings offered, in addition to educational preparation, comprehensive case management and placement services.

Out-of-School Youth (OSY)*	2011 (Q1)	2010
WIA OSY Enrollment (January– March 2011)	375	259
WIA OSY Enrollment (Cumulative FY11)	952	577
WIA OSY Enrollment Goal FY11	1,329	1,329

*Serves 16 to 21 year-old young adults who are not connected to school or work and need assistance upgrading their educational and occupational skills. OSY programs are operated by community-based organizations in all five boroughs.

New York State Department of Labor (NYSDOL)

NYC Unemployment Insurance (UI) Customer Data, 2011 (Q1)

- During the first quarter of 2011, the number of new Unemployment Insurance (UI) claimants decreased by 6,424 (10.8%) over the previous quarter.
- The number of total new UI claimants profiled as likely to exhaust their UI benefits decreased by 3,064 (9.8%) over the previous quarter.

	2011 (Q1)	2010 (Q1)	2010 (Q4)	2010 January - December	2009 January - December	Year to Year Change	Percentage Year to Year Change
Total New UI Claimants*	53,155	59,579	55,779	226,921	278,910	-51,989	-18.6%
Total New UI Claimants Profiled as Likely to Exhaust their UI Benefits**	28,199	31,263	31,507	121,192	141,895	-20,703	-14.6%
Percentage of Total UI Claimants profiled as Likely to Exhaust their UI Benefits	53%	52%	56%	53%	51%	-	-

*Per Reemployment Operating System (REOS) weekly download data excludes UI Claimants Identified as on Temporary Layoff, Seasonal Layoff, and/or Union members that receive work solely thru Union.

**All UI Claimants are "profiled" using a statistical characteristic model to predict their likelihood to exhaust 26 weeks of regular UI benefits. Any claimants with a profiling score of 70 or higher are consider "likely to exhaust" UI benefits and automatically eligible as Dislocated Workers and assumed in need of more intensive reemployment assistance. Note that in NYC UI Claimants profiled as likely to exhaust are scheduled for an in person appointment at a Career Center within 2 weeks of date that Center is notified of their claim.

NYSDOL Operated Career Centers

NYSDOL Snapshot for Three Career Centers (Varick St., Flushing, Metrotech)	
<p>Customer Demographics:</p> <p>Age Breakdown: 2011 (Q1) Age Unknown: 1 % Age 18-24: 7% Age 25-49: 60% Age 50+: 32%</p> <p>Education Level: 2011 (Q1): Less than High School diploma: 14% High School diploma or GED: 26% Some College/Vocational (no degree): 18% Vocational/Associate/or Bachelor's: 32% Master's/or Doctoral: 10%</p>	<p>System Wide Traffic (unique customers): 2011 (Q1): 35,514 2010 (Q4): 33,175 2010: 82,509 2009: 104,835 2008: 121,460</p>

Labor Market Information Overview

- City's unemployment rate** was 8.7% in March 2011, down from 8.9% in February and more than a percentage point below the year earlier (9.9%).

Unemployment Rate: March 2011		
NYC: 8.7%** NY State: 8.0%** National: 8.8%**	Brooklyn : 9.1%* Bronx: 11.7%* Manhattan: 6.8%* Queens: 7.6%* Staten Island: 7.7%*	Total number unemployed in NYC: 334,500 Total number employed in NYC: 3,650,000

*Rates not seasonally adjusted

**Rates seasonally adjusted

Business Development Activities

- Sales forces in 16 Centers (NYC Business Solutions Centers and Workforce1 Career Centers) plus 10 Expansion Sites
- Focus on 7 key economic sectors
- Development of 80,000 – 90,000 job opportunities

Recruitment Activities

- Candidate attraction campaigns (proactive and for specific openings)
- NYSDOL partnership- UI claimants
- Trainees
- Community Partners
- Walk-in customers

35,000
Positions
Filled

Helping New York City Businesses Start, Operate & Expand

How can we help you? NYC Business Solutions helps businesses start, operate and expand in New York City. Our services are provided at no cost, regardless of the size or stage of your business.

- **Business Courses** to teach you skills to reach your business goals
- **Legal Assistance** with our network of lawyers offering pro-bono services
- **Financing Assistance** to help you identify lenders, package your loan application and increase your chance of receiving a loan
- **Incentives** to save you money as your business relocates, expands or makes capital improvements
- **Navigating Government** to help you understand regulations and meet requirements for your business
- **Recruitment** to provide you access to a ready pool of screened job candidates
- **Training** to improve the skills of entry-level employees and increase the quality of your business operations
- **Selling to Government** services that can help you access government contracts
- **Certification** with our M/WBE, EBE, or LBE programs can help you access business opportunities with the city

Why work with us? We get results. Each year we provide no cost, customized services to **help over 9,500** entrepreneurs and small business owners reach their goals. Last year we:

- Facilitated **404 loans** for businesses, helping them to access over **\$22 million** in financing through partner lenders
- Saved **262 businesses** an average of **\$2,000 each** on legal fees associated with structuring businesses and reviewing contracts and leases
- Helped over **4,000 businesses** hire more than **17,000 employees**
- Helped businesses train over **850 employees** with **\$1.4 million** in funding
- Helped **71 businesses** access the City of New York's **\$15 billion** procurement budget by certifying them as Minority and Women-owned Business Enterprises (M/WBE)
- Provided more than **350 courses** to **5,700 attendees**



Financing Customer: Gabriella New York



Recruitment Customer: La Perle Noire Café



Legal Customer: Royal Deli

How to reach us?

NYC BUSINESS SOLUTIONS ←

IN-PERSON Contact an Account Manager at your local Center for an appointment. Services are also offered in Spanish at all NYC Business Solutions Centers.

Bronx Center

Address: 555 Bergen Avenue
Phone: (718) 732-7590

Brooklyn Center

Address: 9 Bond Street, 5th Floor
Phone: (718) 875-3400

Queens Center

Address: 168-25 Jamaica Avenue, 2nd Floor
Phone: (718) 577-2148

Lower Manhattan Center

Address: 79 John Street
Phone: (212) 618-8914

Upper Manhattan Center

Address: 215 West 125th Street, 6th Floor
Phone: (917) 493-7243

Staten Island Center

Address: 120 Stuyvesant Place, 3rd Floor
Phone: (718) 285-8400

Washington Heights Center

Address: 560 W 181st Street, 2nd Floor
Phone: (212) 928-3400

ONLINE

Our website (www.nyc.gov/nycbusiness) offers up-to-date information on the latest course offerings as well as resources to help you plan your business and prepare for an in-person meeting with a NYC Business Solutions Account Manager.

BY PHONE



and ask for NYC Business Solutions. TTY users should call 212-504-4115.

Equal Opportunity Employer/Program – Auxiliary aids and services are available upon request to individuals with disabilities.

Financing Customer: The Brownstone



NYC
Small Business
Services

NYC Business Solutions is a set of services offered by the Department of Small Business Services to help businesses start, operate and expand in New York City.



Keith Hall

Biography

Dr. Keith Hall serves as the Commissioner of the Bureau of Labor Statistics (BLS). He was confirmed by the Senate in December 2007 and officially sworn-in to office in January 2008 for a four year term. The BLS is a 2,500-person organization and is the principal fact-finding agency for the Federal Government in the broad field of labor economics. The Bureau operates two dozen surveys and programs that measure employment and unemployment, compensation, worker safety, productivity, and consumer and price movements. He has a B.A. degree from the University of Virginia and a M.S. and Ph.D. from Purdue University.

Prior to his current position, Dr. Hall had eighteen years of federal service with the Department of the Treasury, the Department of Commerce, the International Trade Commission, and the Executive Office of the President. Most recently, he served as Chief Economist for the White House Council of Economic Advisers where he analyzed a broad range of fiscal, regulatory and macroeconomic policies and directed a team that monitored the state of the economy and developed economic forecasts.

Dr. Hall also served as the Chief Economist for the U.S. Department of Commerce for four years. In that role, he was the principal economic advisor to the Under Secretary for Economic Affairs, and served as a special adviser to the Secretary of Commerce and as a member of the Secretary's principal management team.

Dr. Hall previously served as a Senior International Economist in the Research Division at the U.S. International Trade Commission – an independent agency conducting general investigations on any matter involving tariffs and international trade, including conditions of competition between U.S. and foreign industries. He has been on full time faculty in the Economic Departments at the Universities of Arkansas and Missouri, and has published a number of papers on international trade and international trade policy

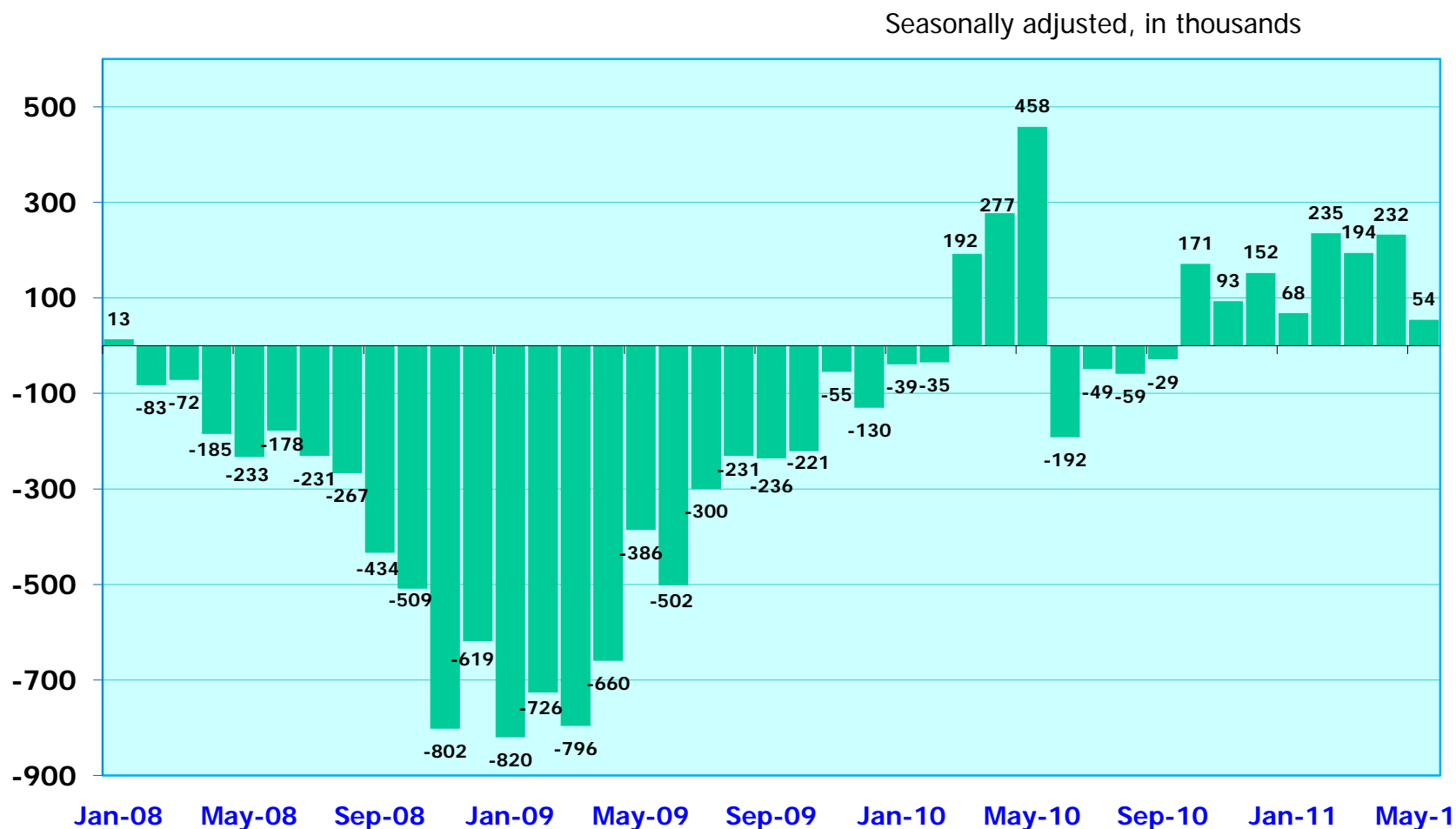
The Economy Today: What our measures tell us about the current labor market

Keith Hall
Commissioner
Bureau of Labor Statistics
June 2011



Total nonfarm employment

Over-the-month change, 2008-11

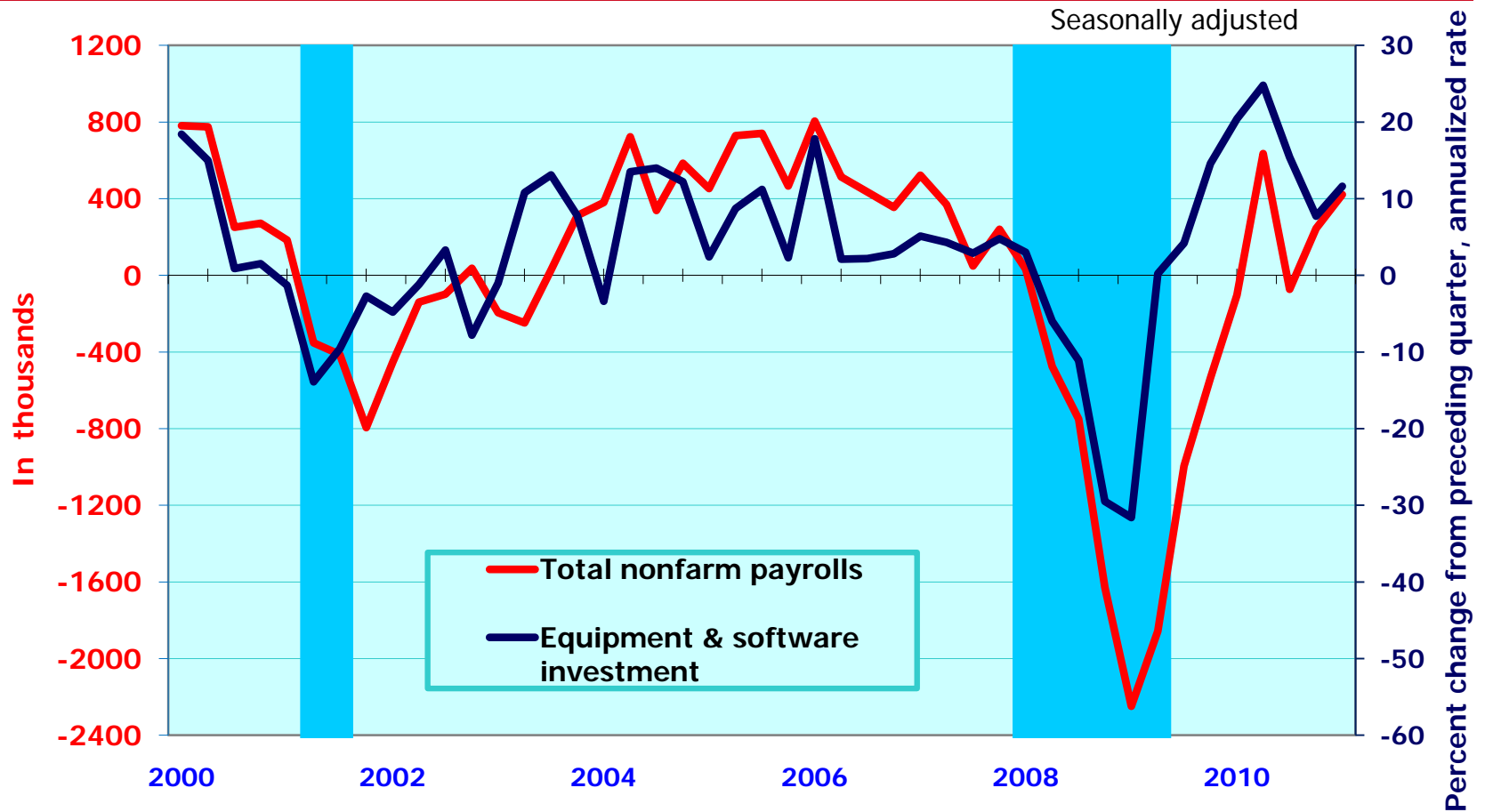


Source: U.S. Bureau of Labor Statistics, Current Employment Statistics survey, June 3, 2011.

Note: Most recent 2 months of CES data are preliminary.

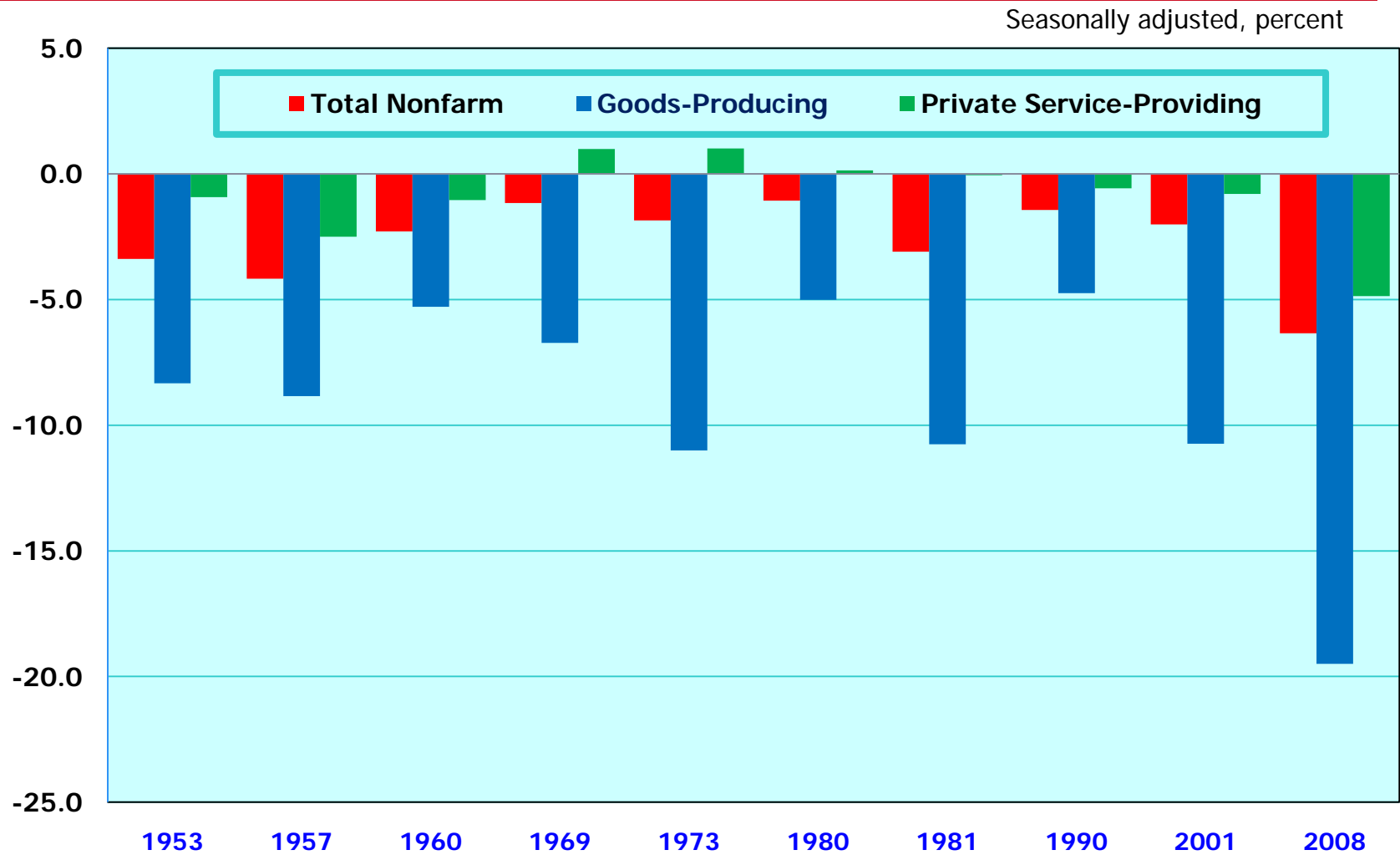
Total nonfarm payrolls vs. equipment and software investment

Over-the-quarter change, 2000-11



Source: U.S. Bureau of Labor Statistics, Current Employment Statistics (CES) survey and the Bureau of Economic Analysis
Note: Shaded areas represent recessions as determined by the National Bureau of Economic Research (NBER). Most recent 2 months of CES data are preliminary.

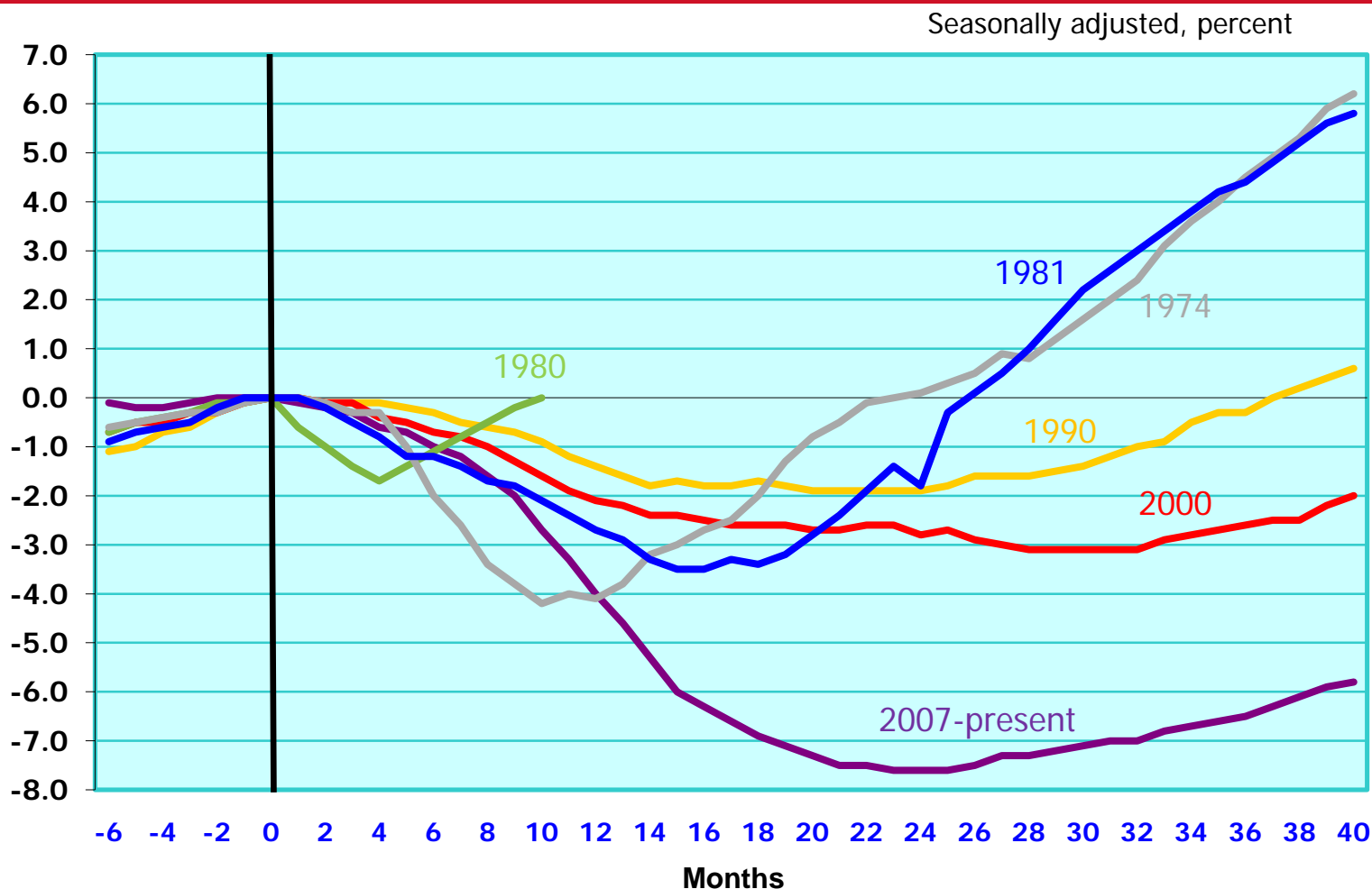
Peak-to-trough employment decline, by downturn



Source: Bureau of Labor Statistics, Current Employment Statistics survey.

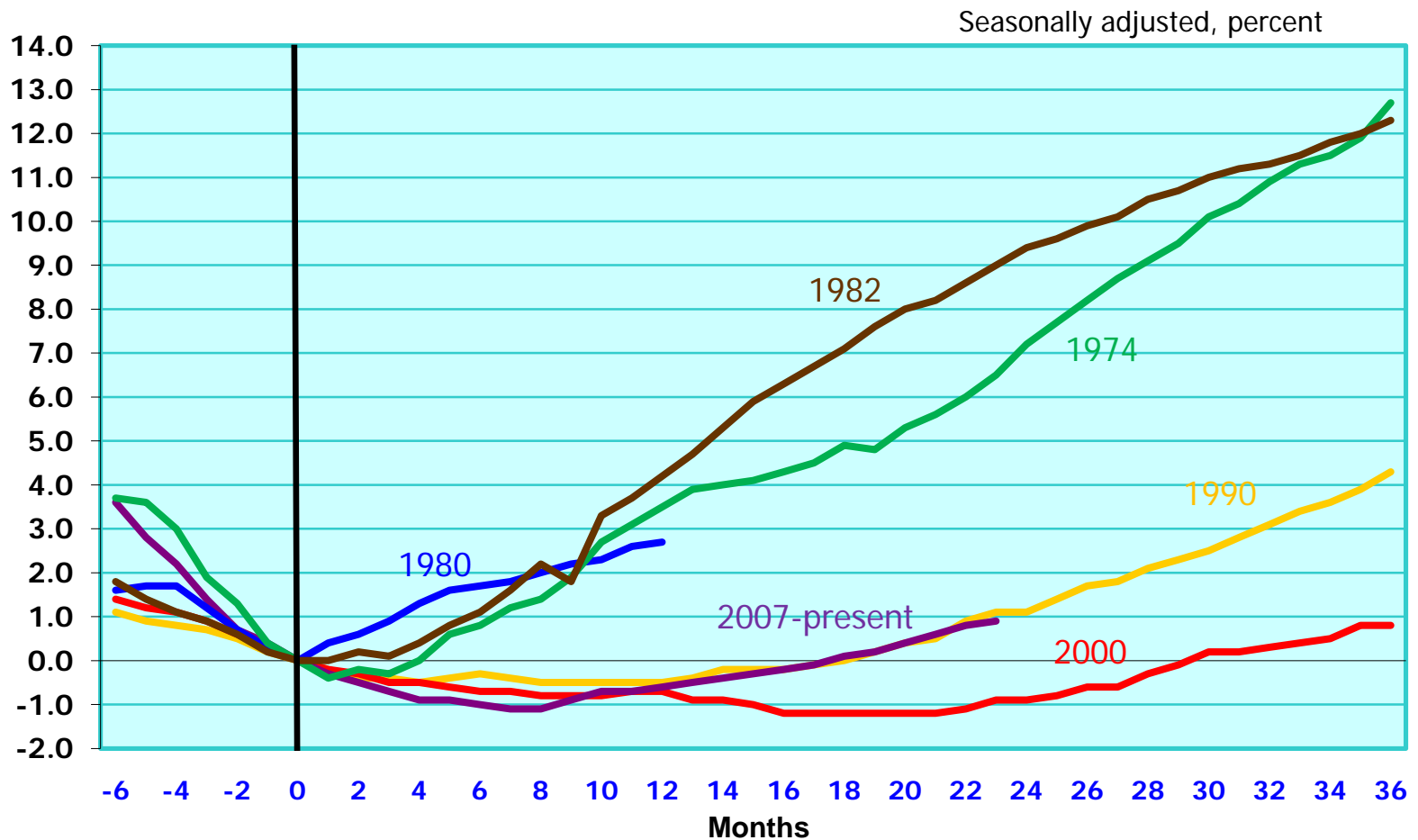


Percentage change in total private employment, from private nonfarm peak



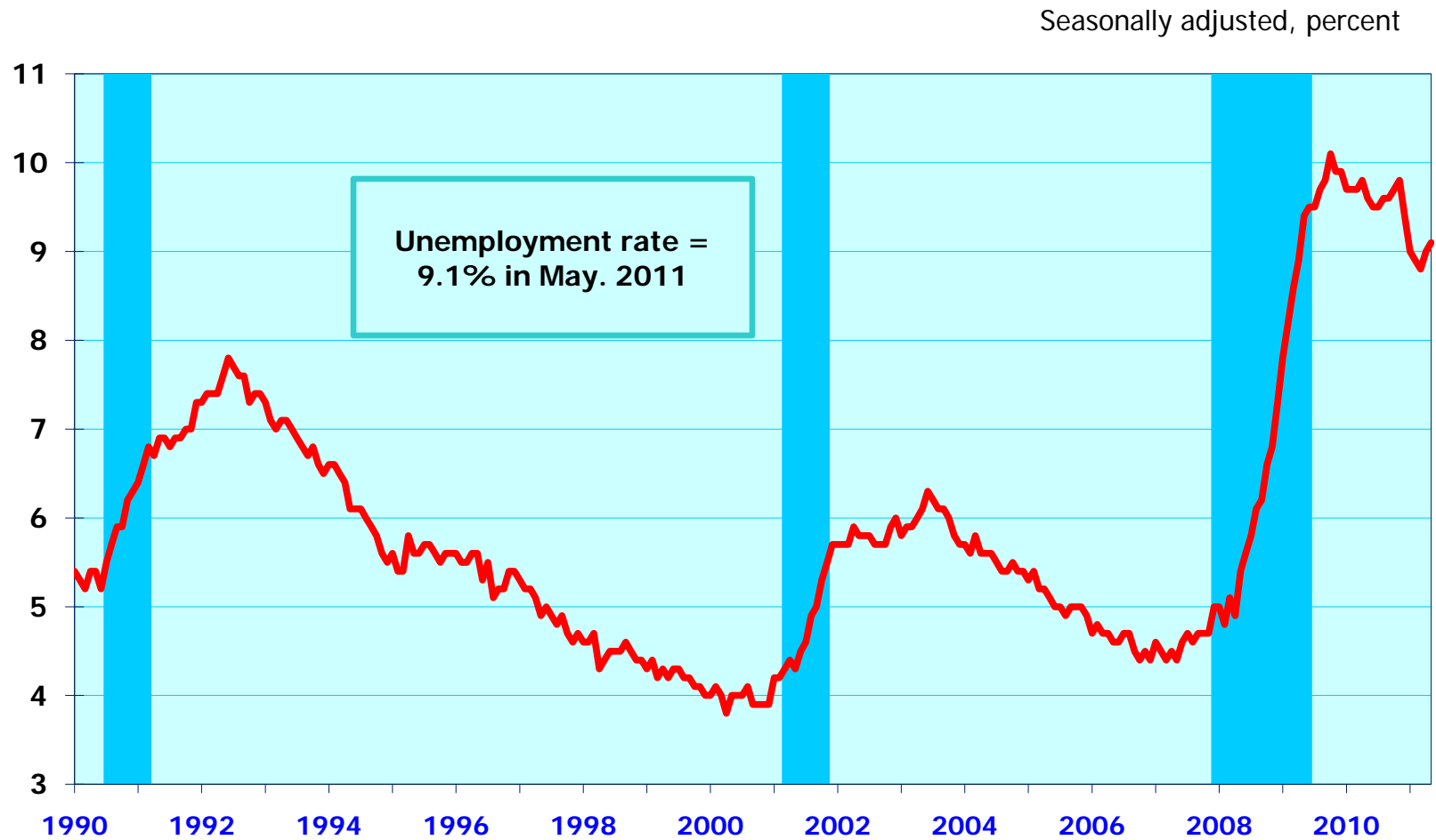
Source: U.S. Bureau of Labor Statistics, Current Employment Statistics survey, June 3, 2011.

Percentage change in total private employment, from NBER designated trough

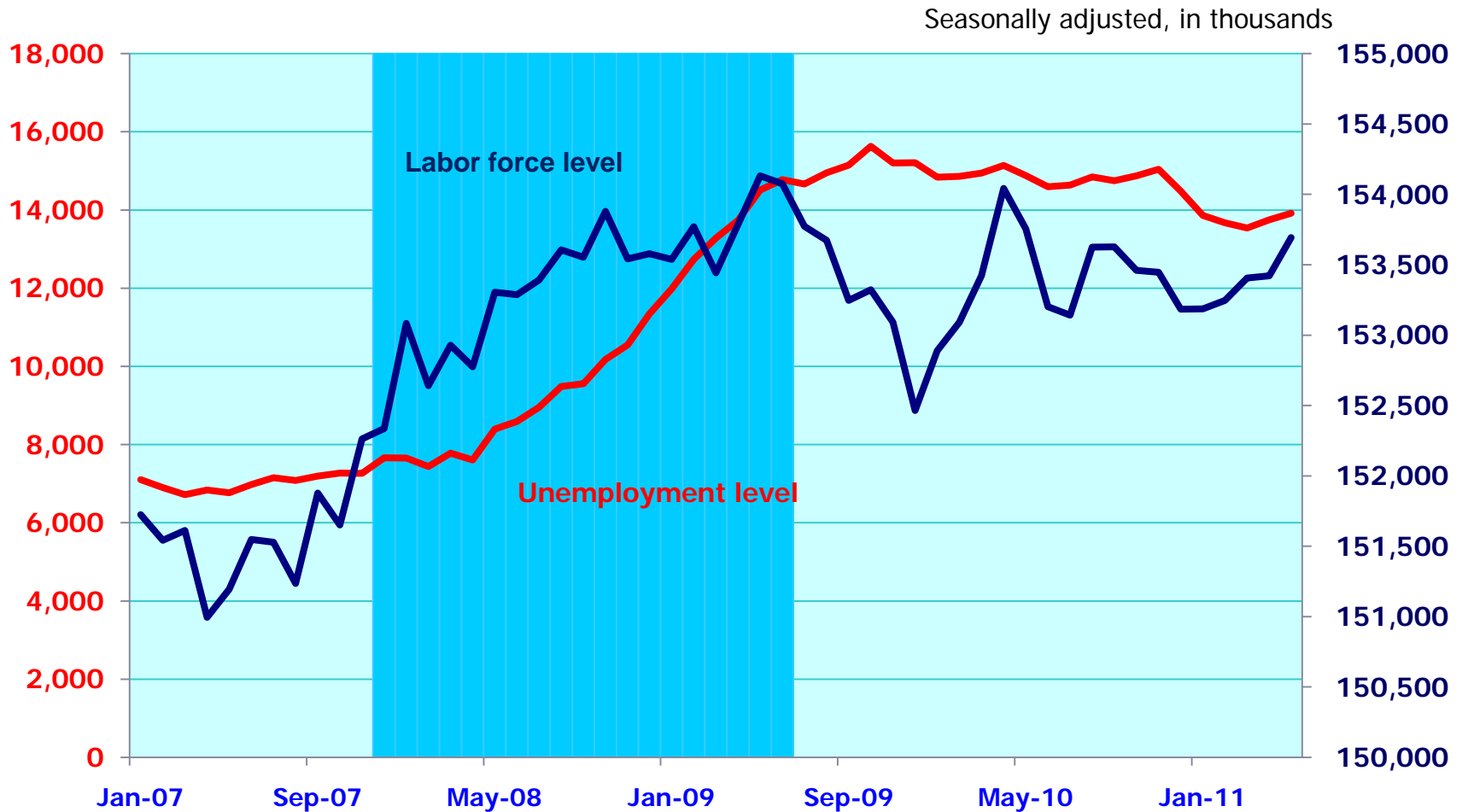


Source: U.S. Bureau of Labor Statistics, Current Employment Statistics survey, June 3, 2011.

Civilian unemployment rate 1990-2011



Civilian labor force and unemployment levels 2007-11

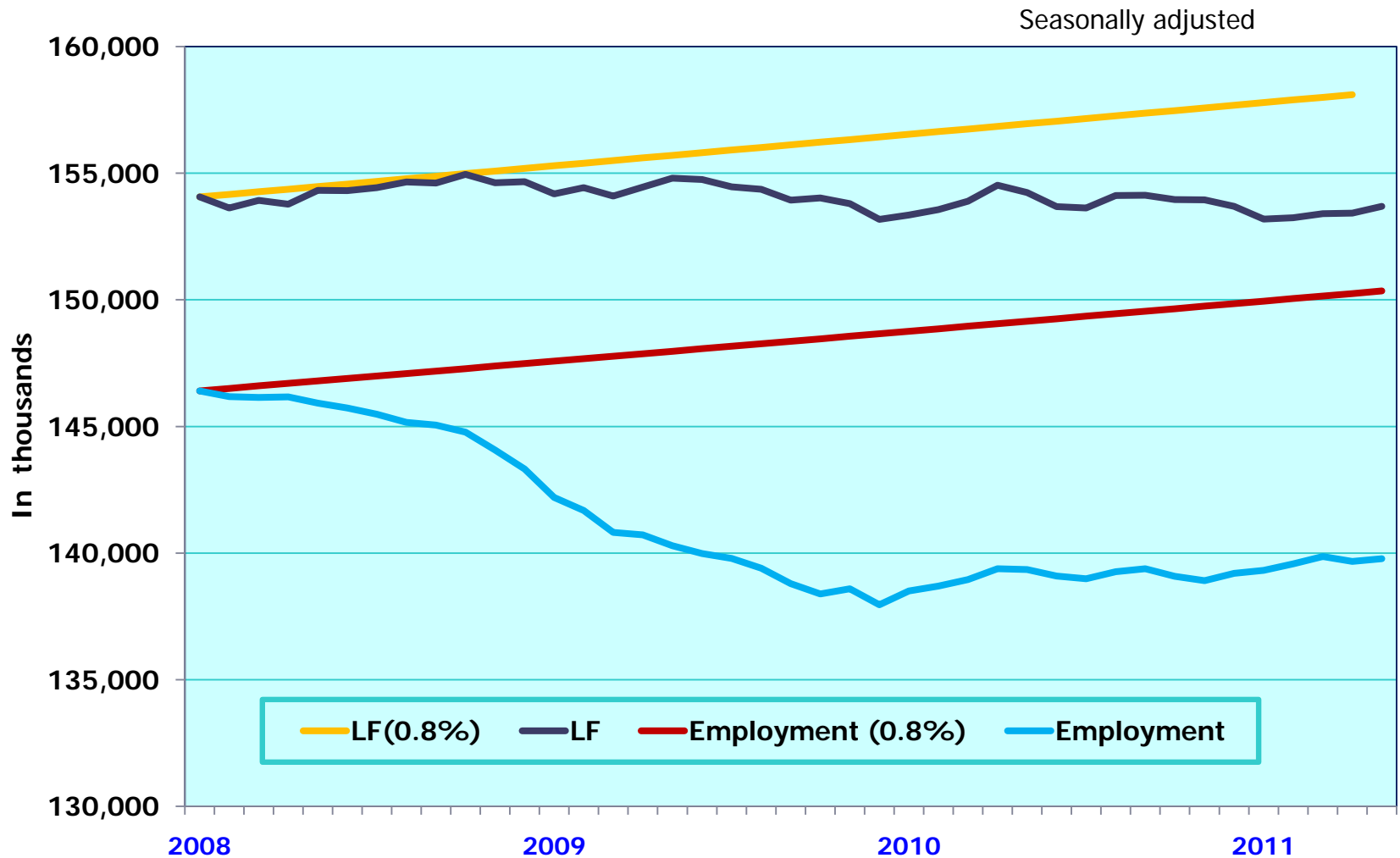


Source: U.S. Bureau of Labor Statistics, Current Population Survey.

Note: The shaded area represents a recession as determined by the National Bureau of Economic Research. Data for the labor force reflect adjustments for annual population control updates.

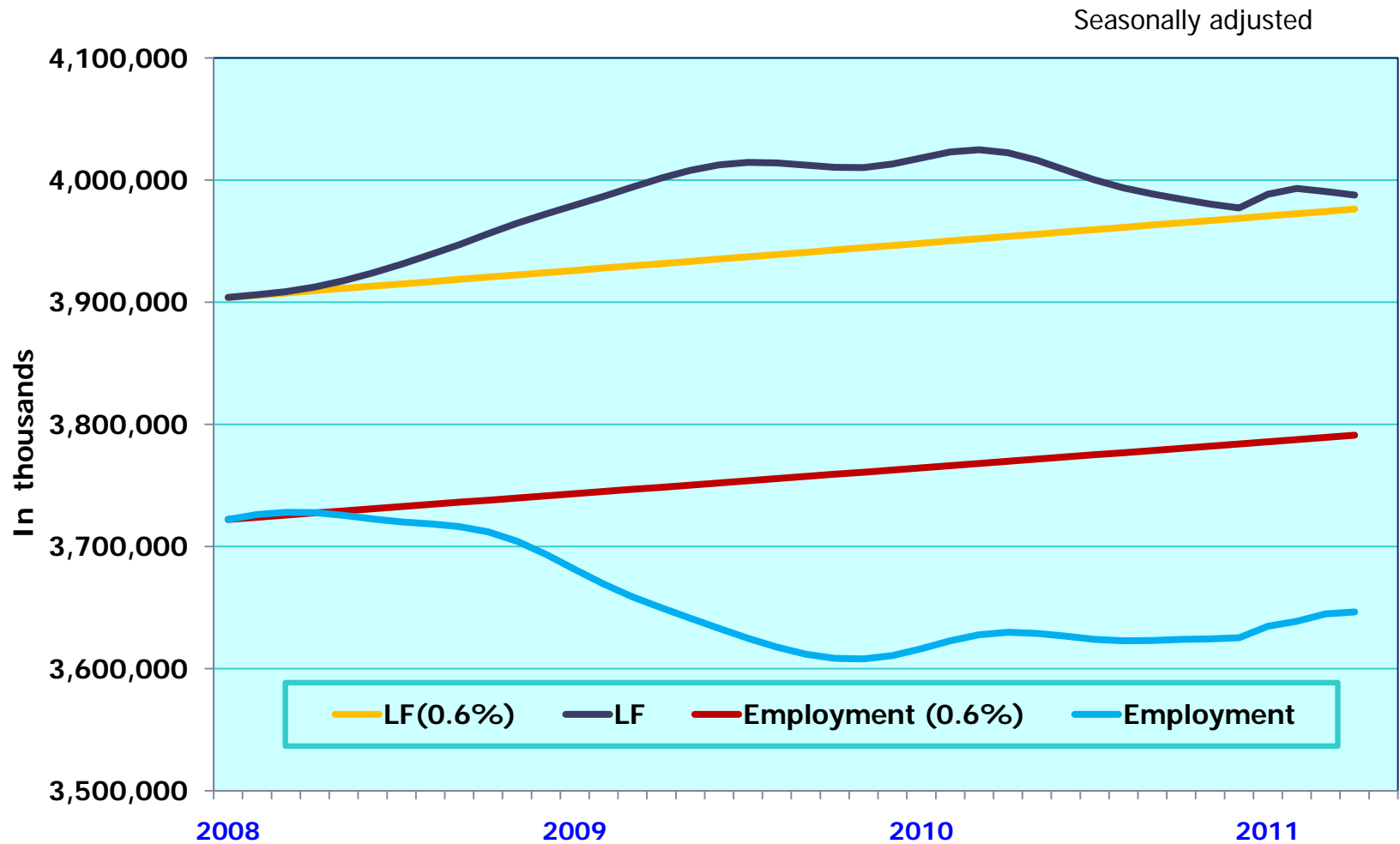


Gap between employment and the employment level needed to keep up with population growth, 2008-11



Source: Current Population Survey, June 3, 2011. Annual employment growth rate

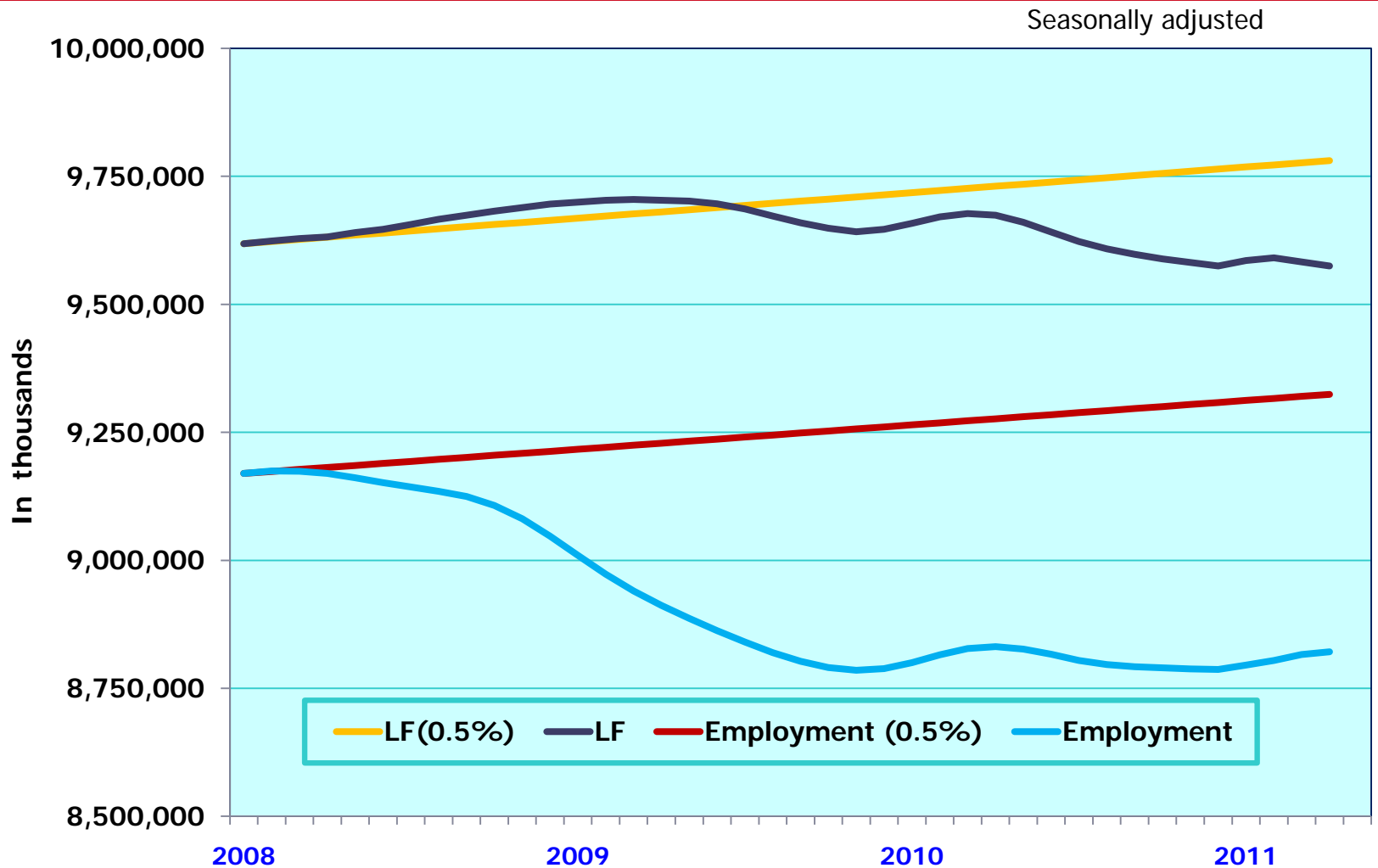
Gap between NYC employment and the employment level needed to keep up with NYC population growth, 2008-11



Source: Bureau of Labor Statistics, Local Area Unemployment Statistics program. Annual employment growth rate.



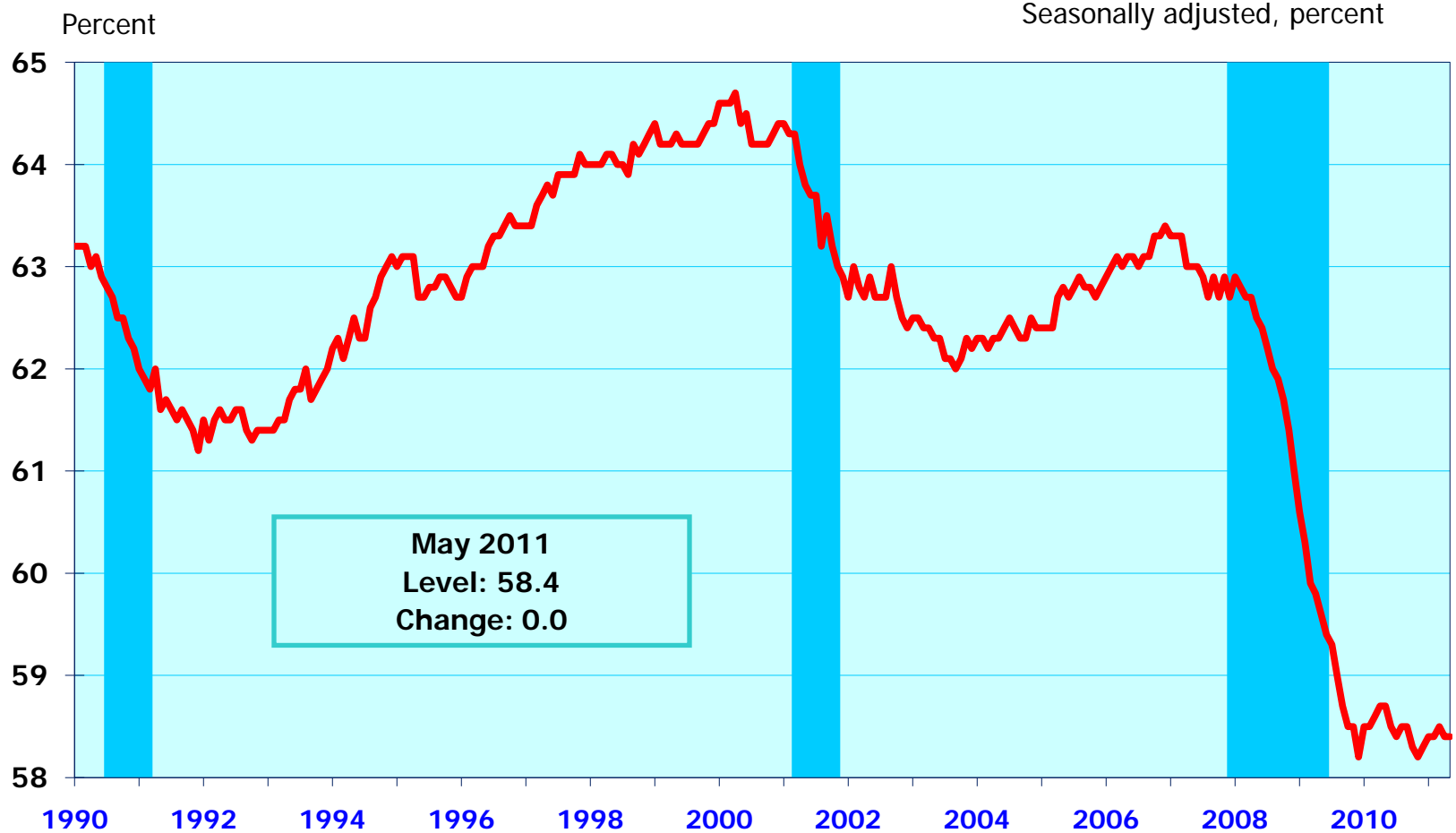
Gap between NYS employment and the employment level needed to keep up with NYS population growth, 2008-11



Source: Bureau of Labor Statistics, Local Area Unemployment Statistics program. Annual employment growth rate.



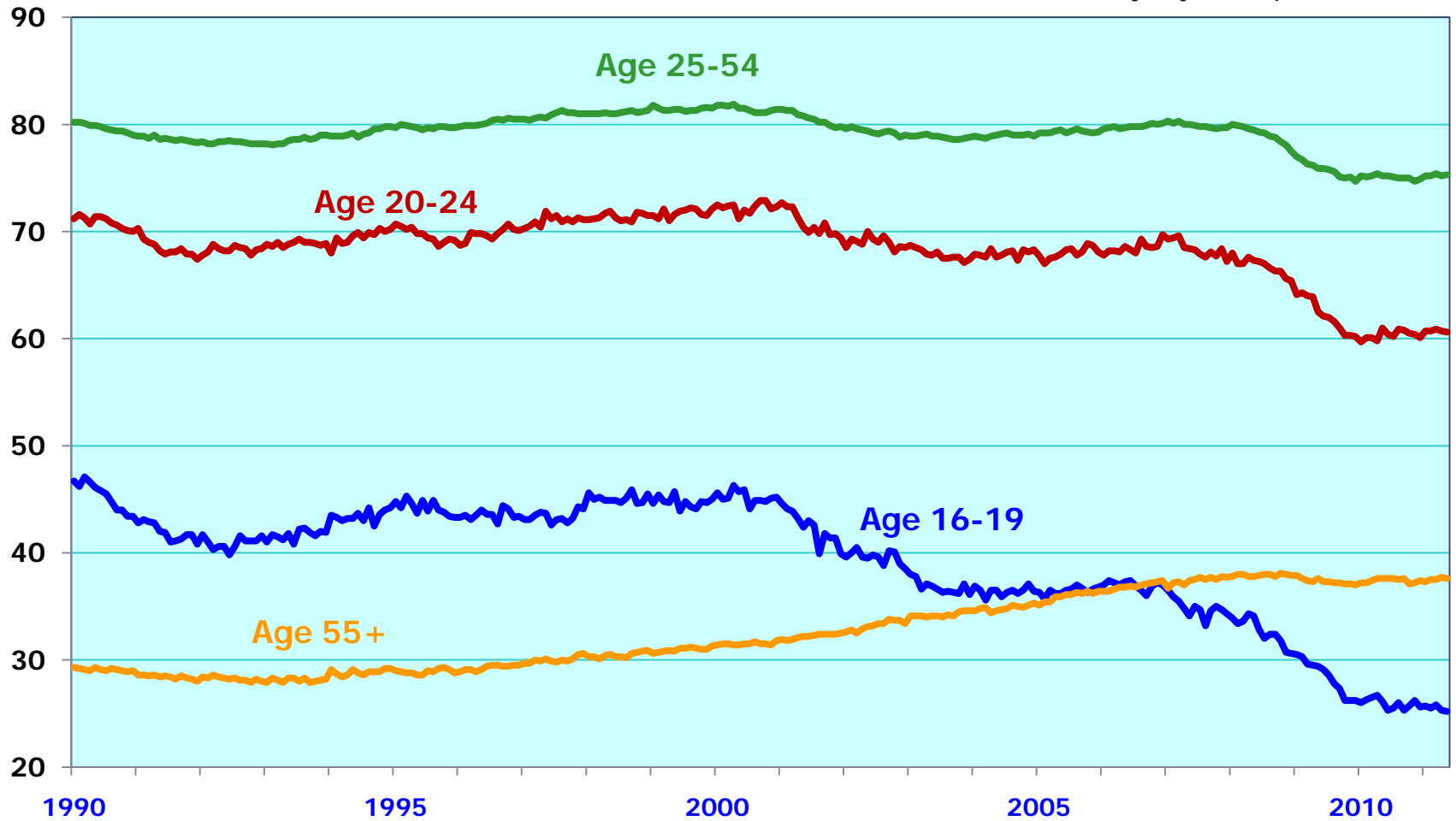
Employment-population ratio 1990-2011



Source: U.S. Bureau of Labor Statistics, Current Population Survey.
Note: Shaded areas represent recessions as determined by the National Bureau of Economic Research.

Employment-population ratio, by age 1990-2011

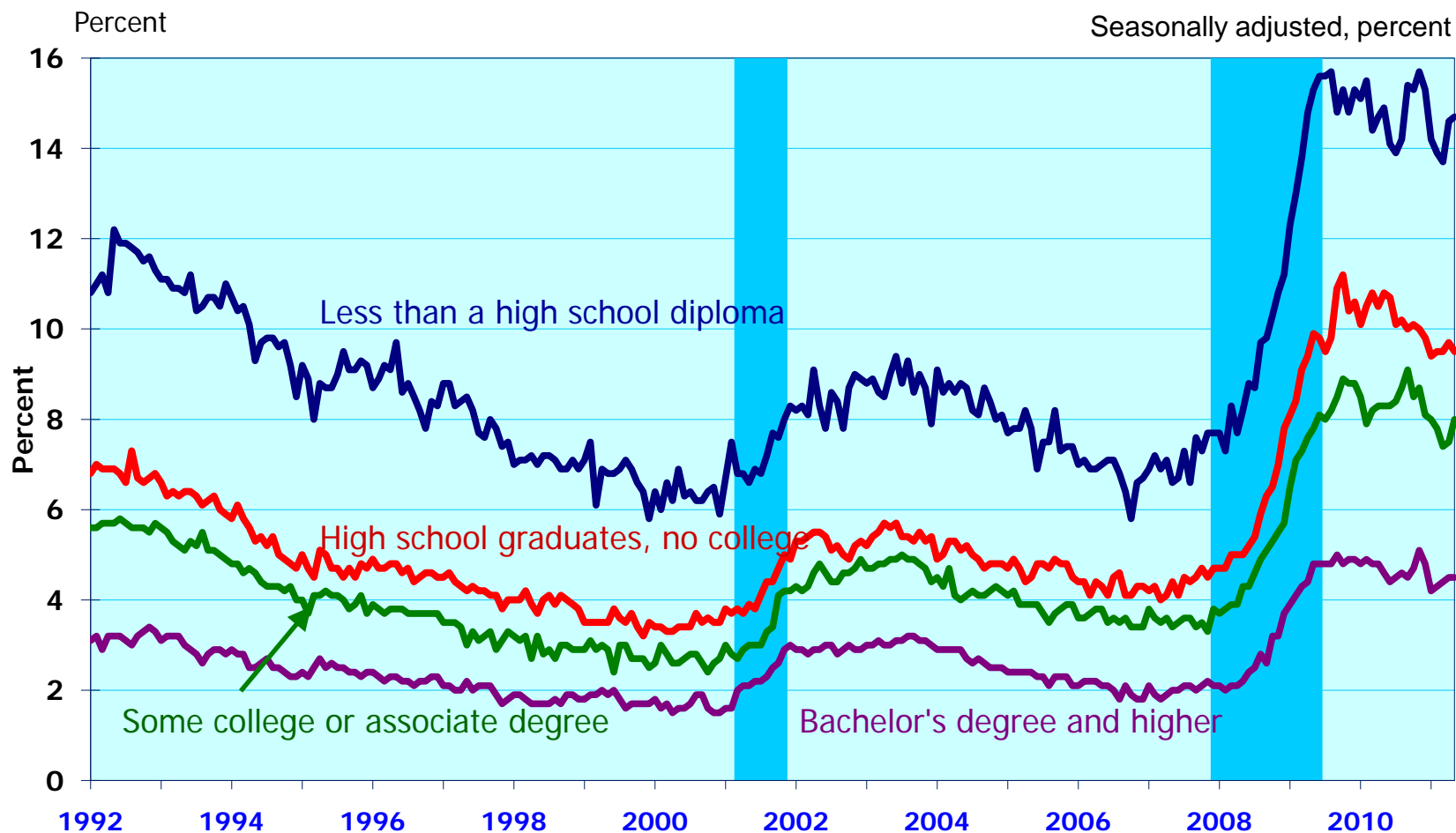
Seasonally adjusted, percent



Source: U.S. Bureau of Labor Statistics, Current Population Survey.

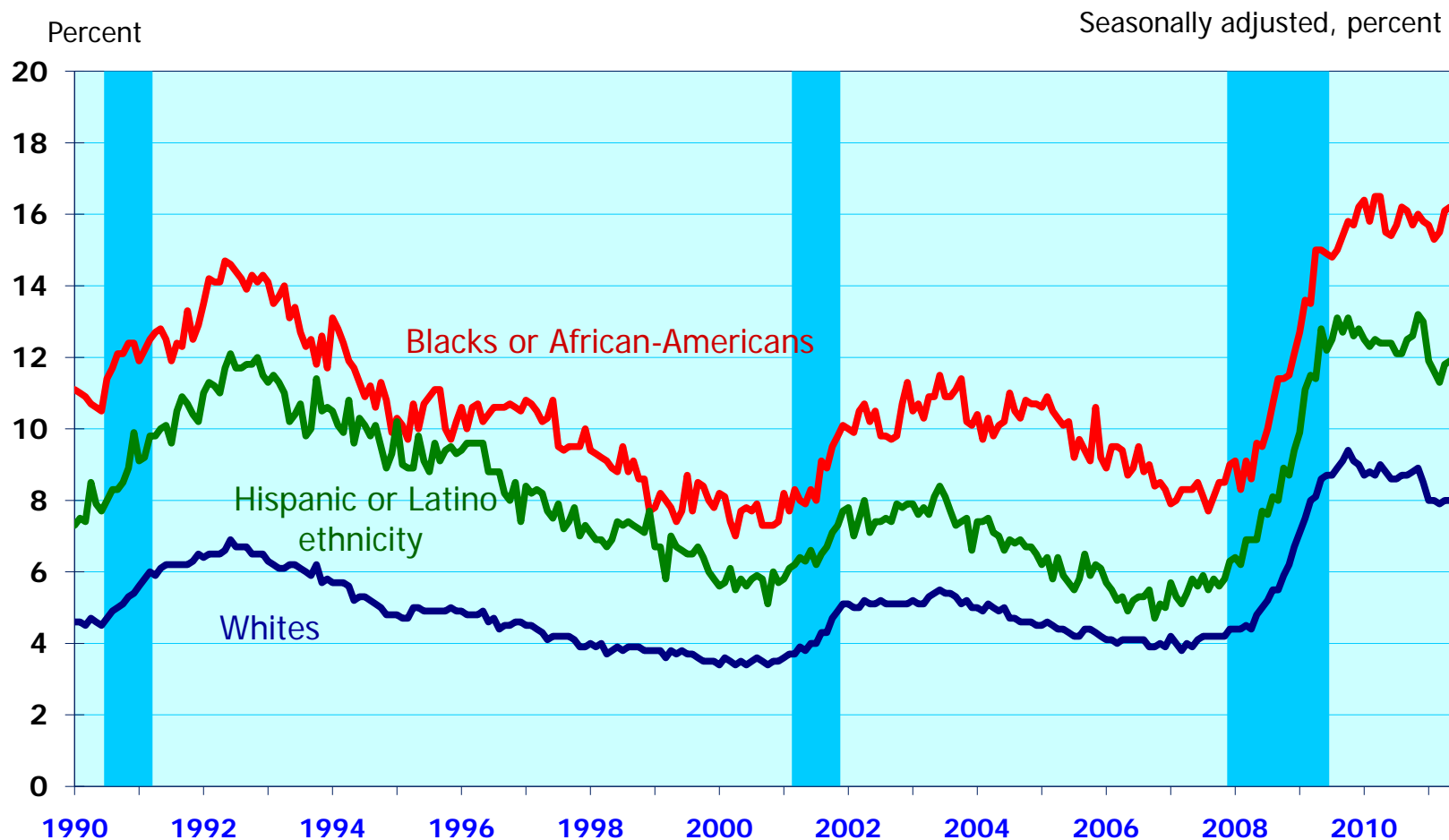


Unemployment rates for persons 25 years and older by educational attainment 1992-2011



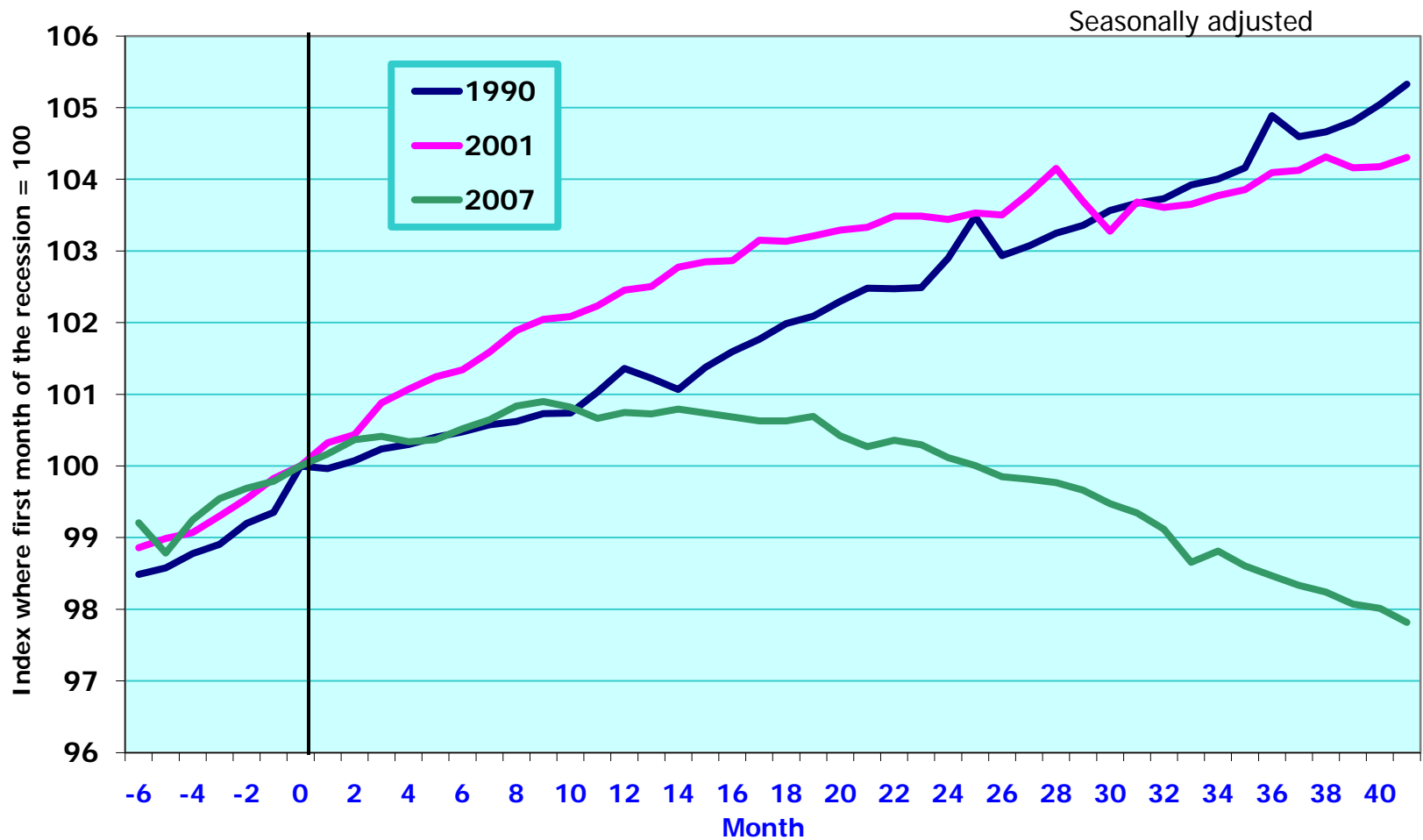
Note: Shaded areas represent recessions as determined by the National Bureau of Economic Research.
Source: U.S. Bureau of Labor Statistics, Current Population Survey.

Unemployment rates for whites, blacks or African Americans, and persons of Hispanic or Latino ethnicity 1990-2011



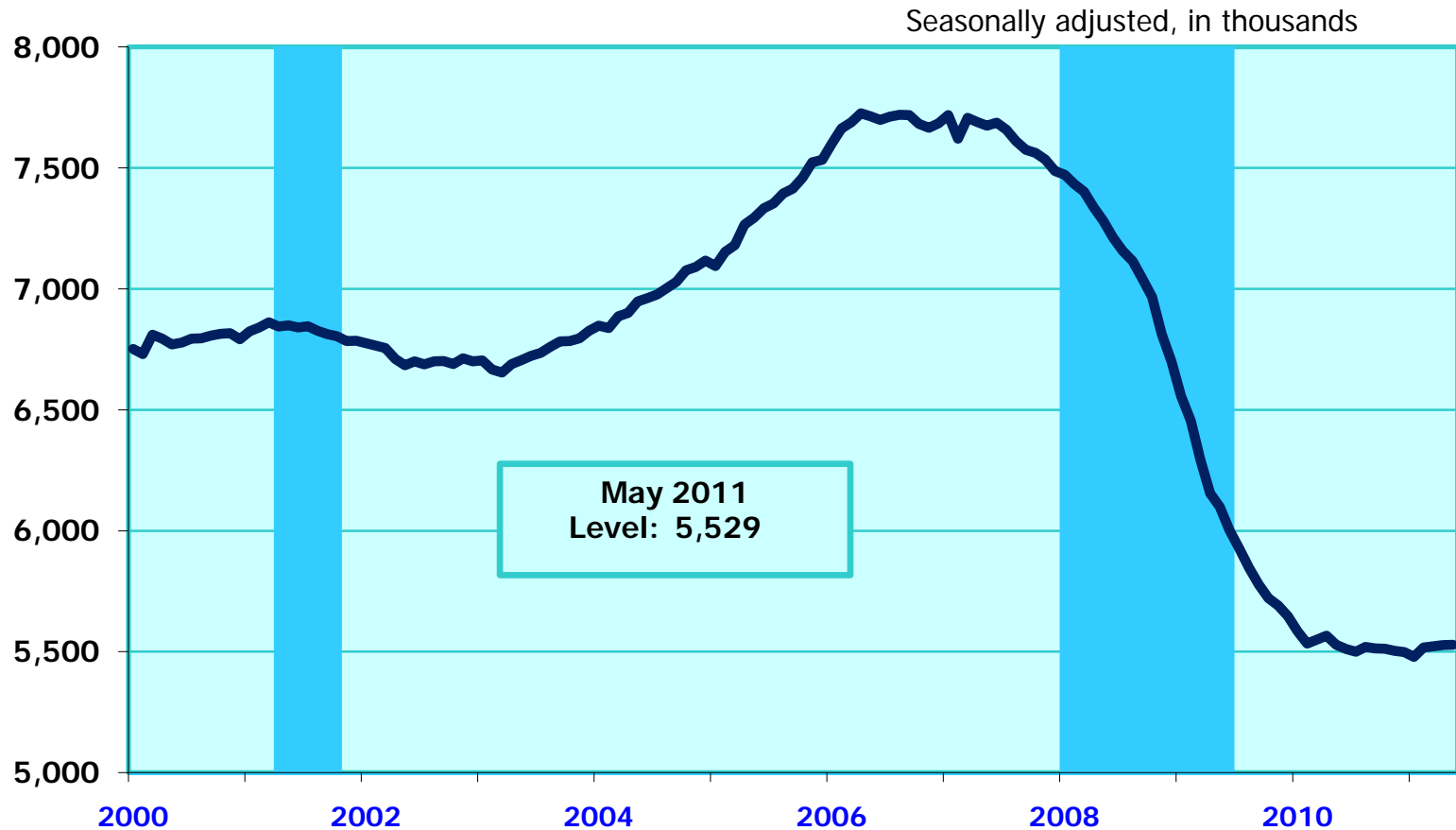
Note: Shaded areas represent recessions as determined by the National Bureau of Economic Research.
Source: U.S. Bureau of Labor Statistics, Current Population Survey.

Index of local government employment from beginning of recession*



*Note: Business cycle peak as determined by NBER

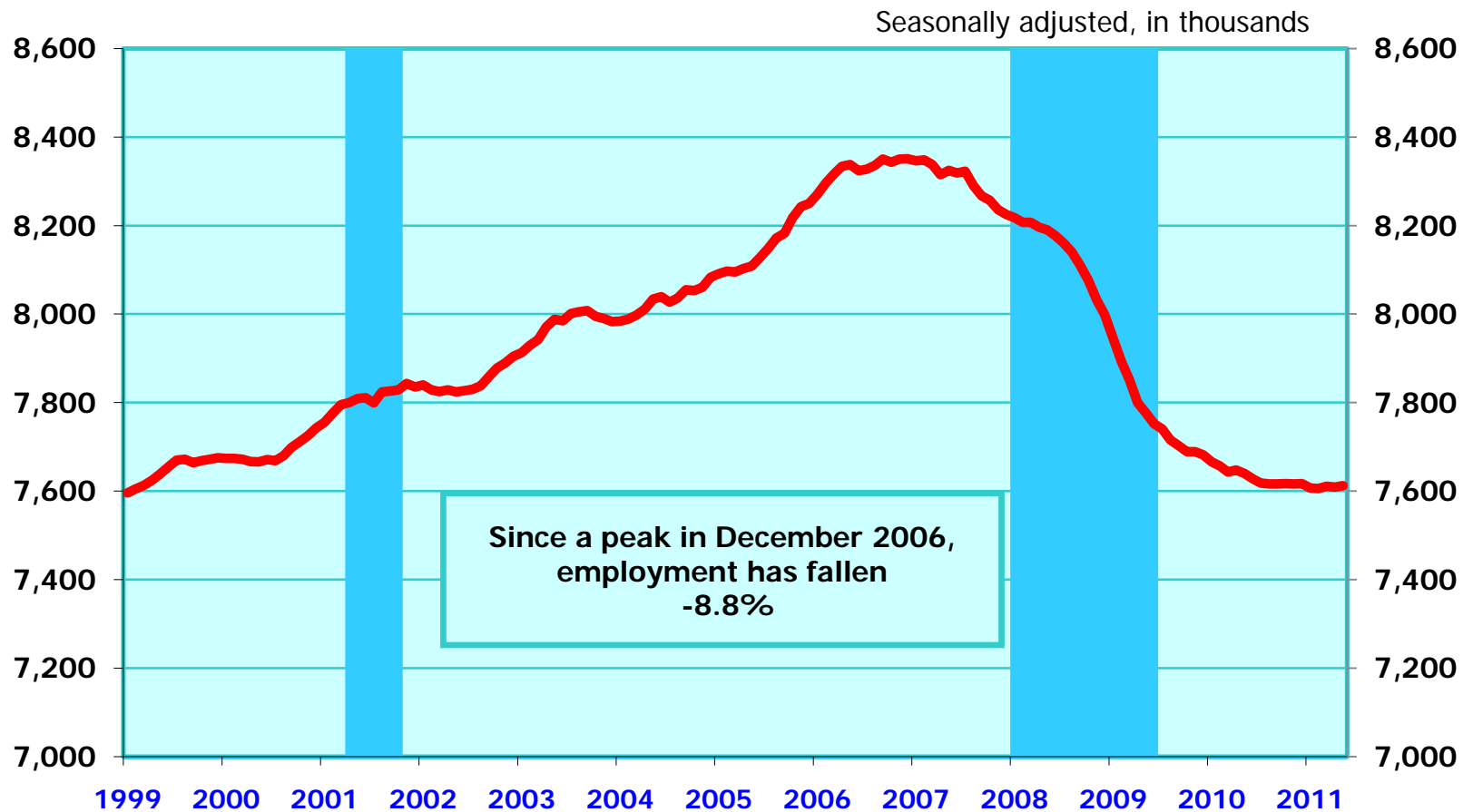
Employment in construction 2000-11



Source: U.S. Bureau of Labor Statistics, Current Employment Statistics survey, June 3, 2011.

Note: Shaded areas represent recessions as determined by the National Bureau of Economic Research. Most recent 2 months of data are preliminary.

Financial activities employment 1999-2011



Source: U.S. Bureau of Labor Statistics, Current Employment Statistics survey, June 3, 2011.

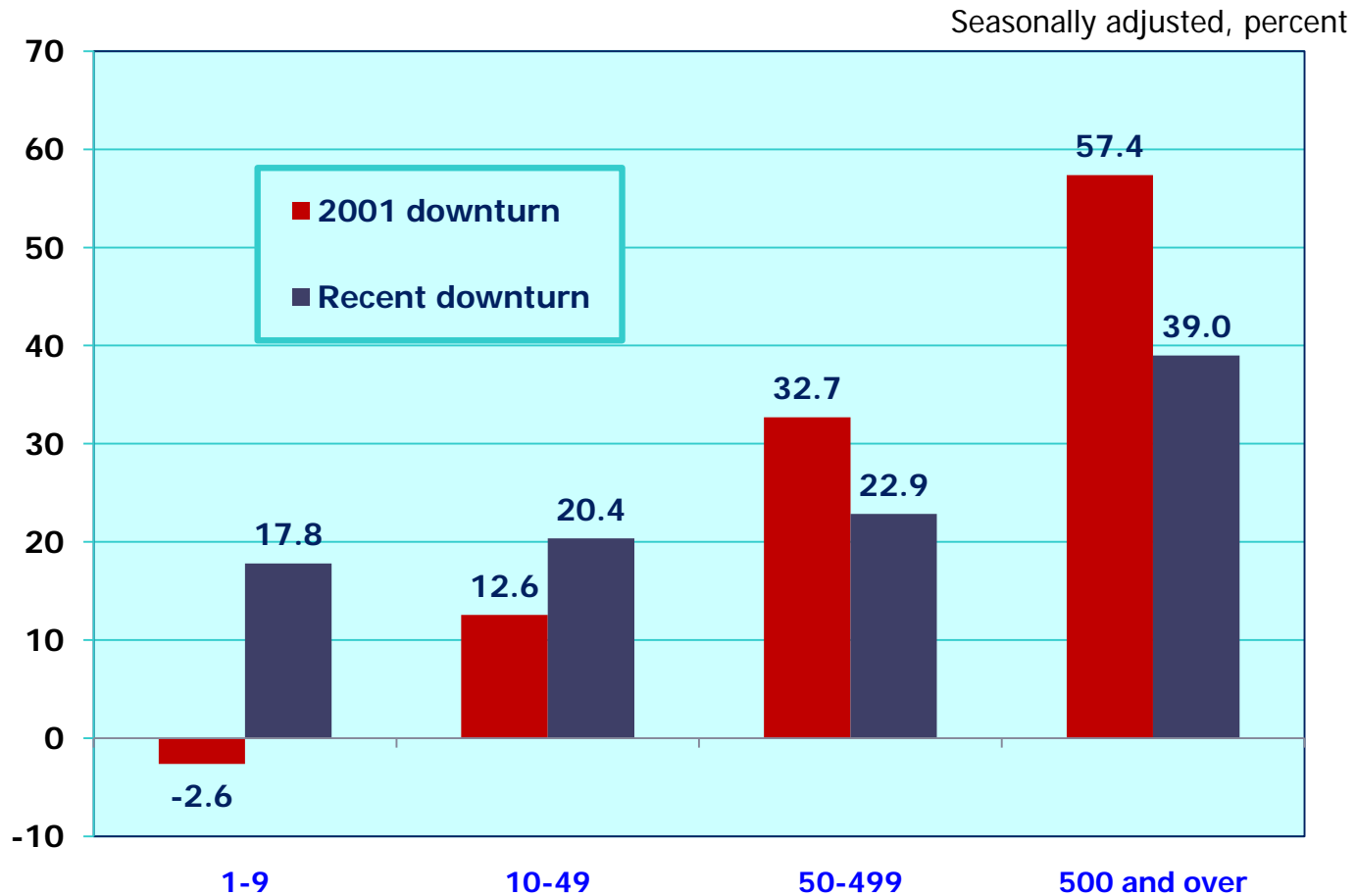
Note: Most recent 2 months of CES data are preliminary.

Shaded areas represent recessions as determined by the National Bureau of Economic Research.

Unemployment rates by state, seasonally adjusted

April 2011

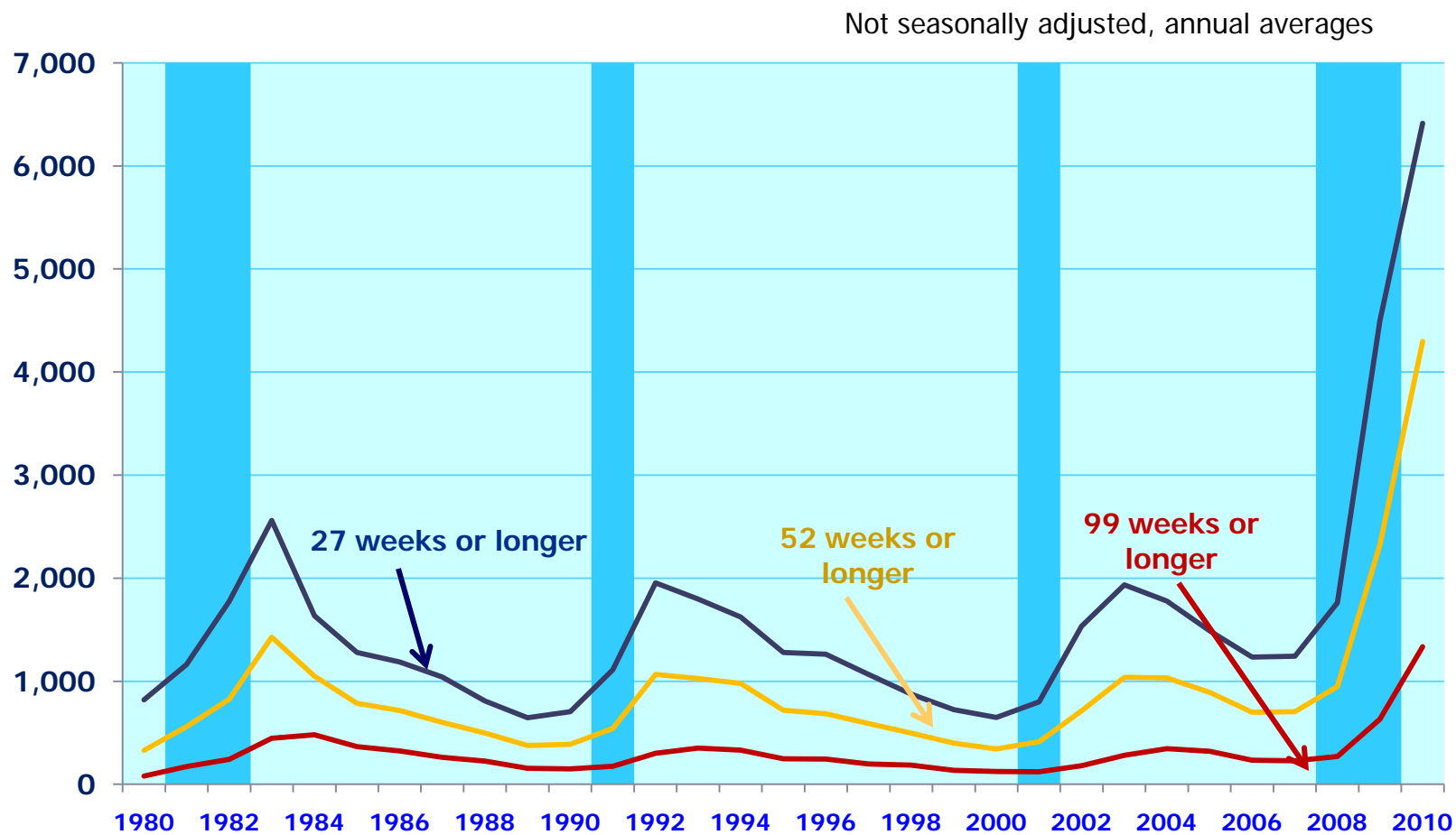
Share of total private employment losses by firm size, recent downturn vs. 2001 downturn



Source: U.S. Bureau of Labor Statistics, Business Employment Dynamics program.

Note: Data are preliminary. The recent downturn spans the employment downturn from Q1 2008 to Q1 2010. The 2001 downturn runs from Q2 2001 to Q2 2003. The percentages represent each size classes' share of net employment losses over the given time period.

Long Term Unemployment 1990-2010

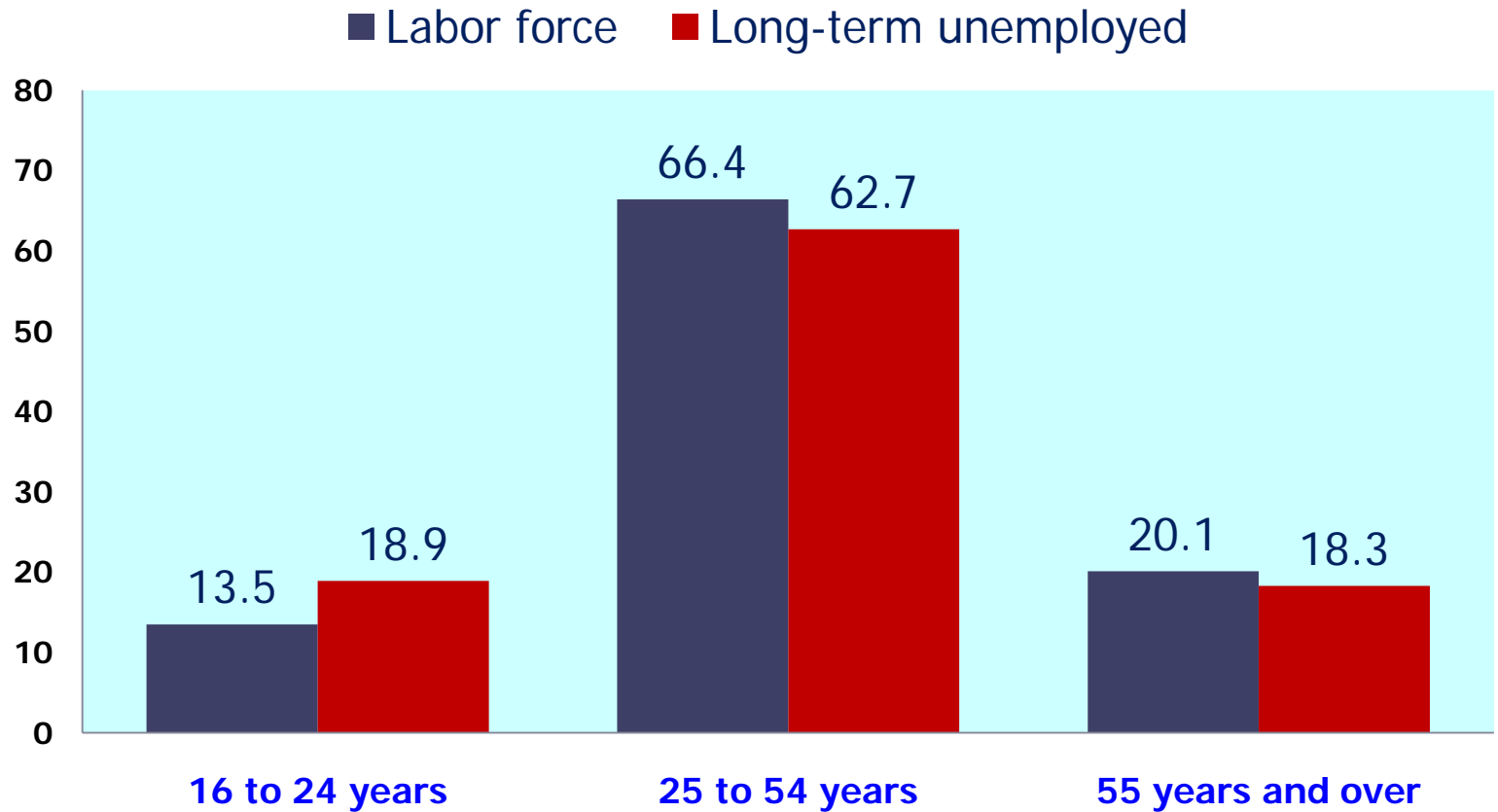


Source: U.S. Bureau of Labor Statistics, Current Population Survey, annual average data



Share of long term unemployment, by age

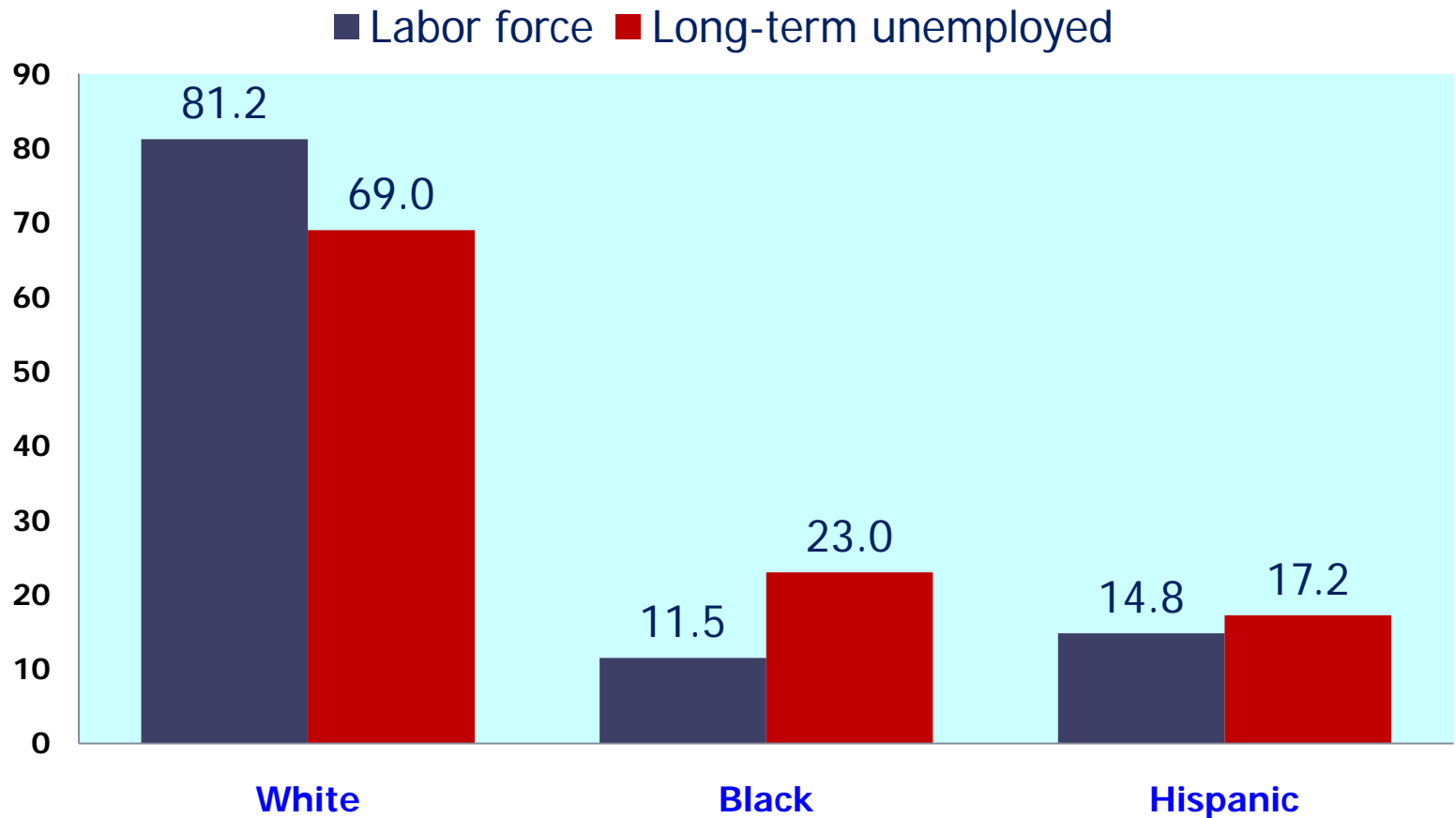
May 2011



Source: U.S. Bureau of Labor Statistics, Current Population Survey.

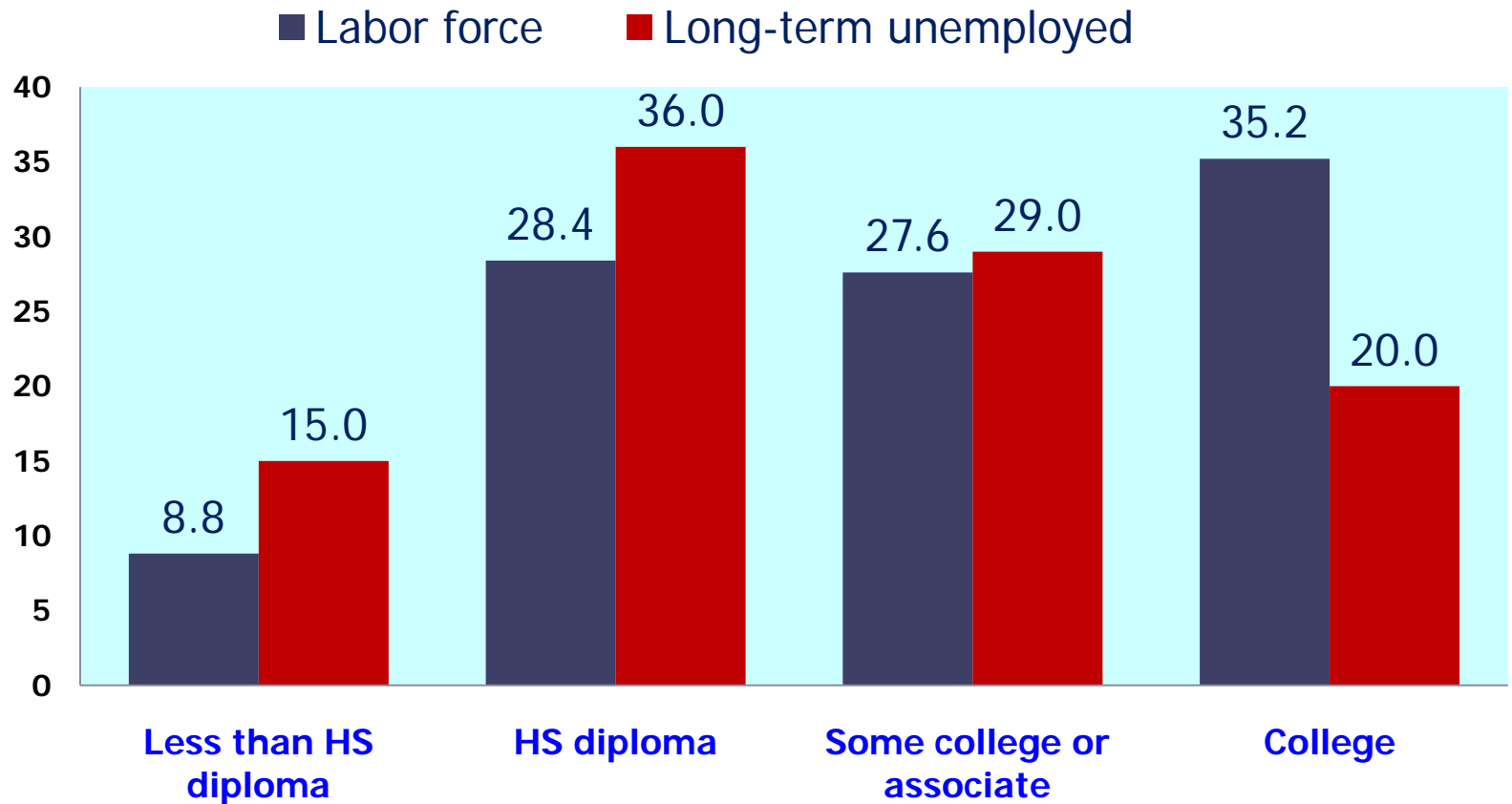
Share of long term unemployment, by race

May 2011



Source: U.S. Bureau of Labor Statistics, Current Population Survey.

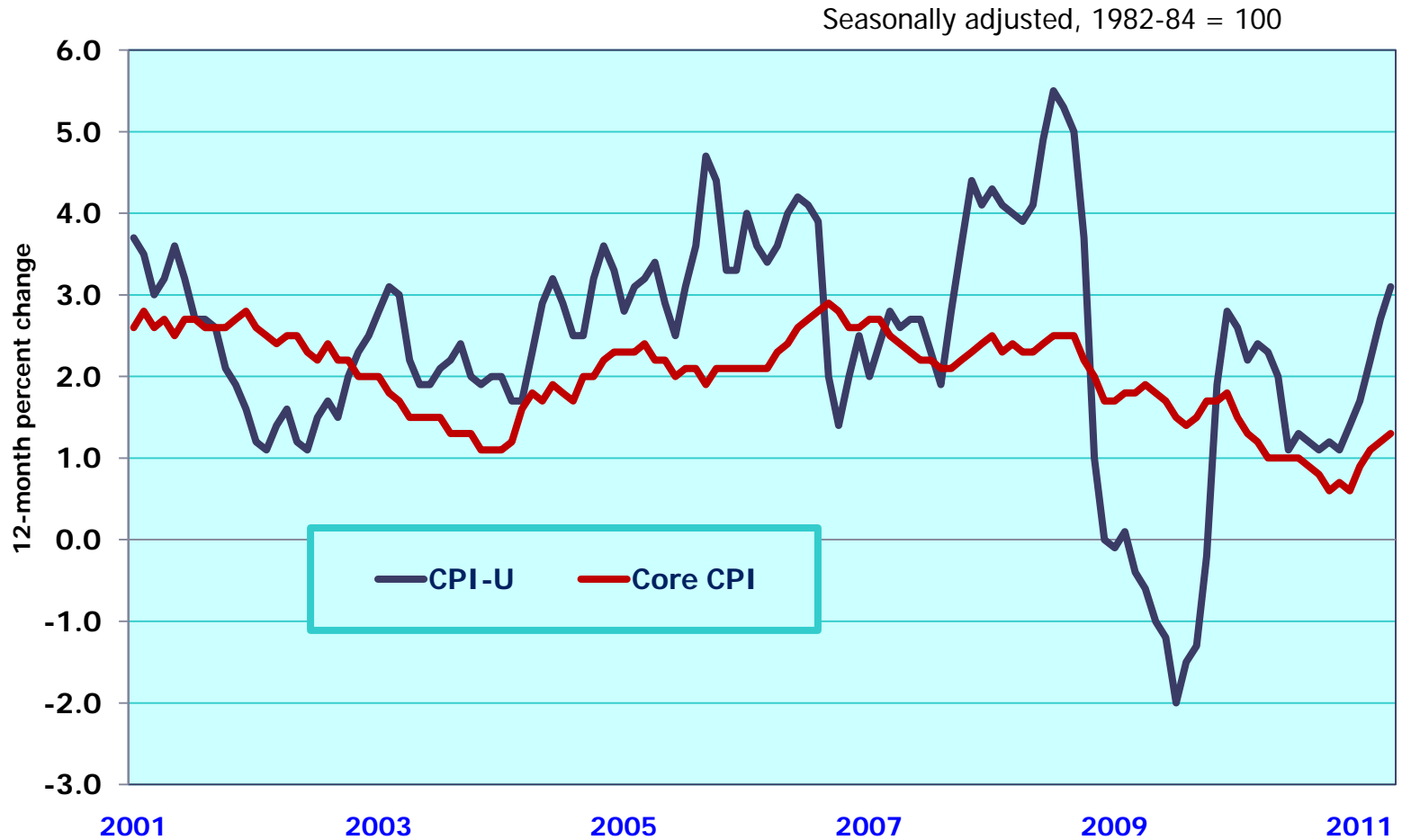
Share of long term unemployment, by education (25 years and over) May 2011



Source: U.S. Bureau of Labor Statistics, Current Population Survey.

Consumer Price Index

2001-11



Source: Bureau of Labor Statistics, Consumer Price Index

April 2011 New York City Workforce Providers' Monthly Job Report

OVERVIEW

- ❖ New York City's unemployment rate decreased to 8.6% from 8.7% in March 2011. This represents a further improvement from the 9.8% unemployment rate one year ago.
- ❖ New York City's unemployment rate is higher than the state's (7.9%) but lower than the nation's (9.0%).

1-YEAR CHANGES

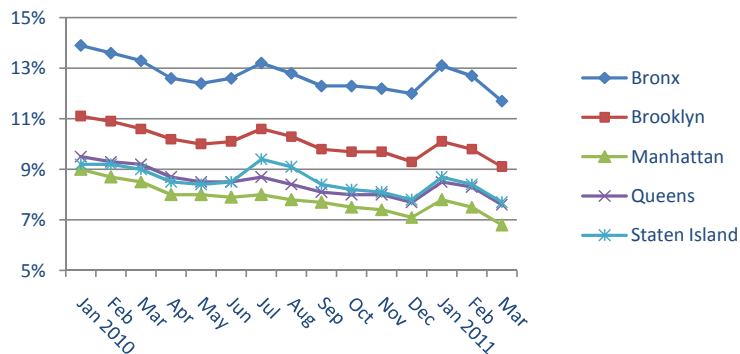
- ❖ New York City's private sector employment grew by 44,400 or by 1.4 percent since April 2010.
- ❖ The City's over-the-year private sector growth rate was the same as the State but weaker than the Nation's (1.7%).
- ❖ Over the past year, the sectors with the most job *growth* were educational services (+13,500); financial services (+12,200); and professional, scientific and technical services (+8,400).
- ❖ The largest job *losses* over the year were in government (-18,000), construction (-9,300) and arts and entertainment (-4,300).

THIS MONTH'S MAJOR TRENDS

- ❖ The City's private sector job count grew by 17,300, well above the 10-year average of 4,700 this time of year.
- ❖ The strongest over-the-month *growth* was in accommodation and food service (+5,500), administrative and support and waste management services (+3,800), and real estate and rental and leasing (+2,500).
- ❖ The sectors with the most job *loss* this month were: health care and social assistance (-1,500), manufacturing (-1,100), and wholesale trade (-3,000). After a strong March, construction employment was down this month.

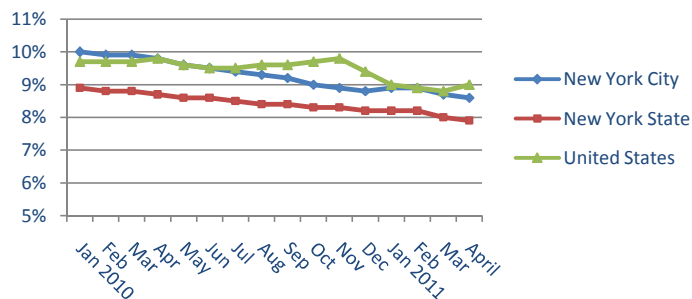
UNEMPLOYMENT RATES

New York City's Boroughs



	MAR 2011	MAR 2010
<i>not seasonally adjusted</i>		
Bronx	11.7%	13.3%
Brooklyn	9.1%	10.6%
Manhattan	6.8%	8.5%
Queens	7.6%	9.2%
Staten Island	7.7%	9.0%

New York City, New York State, and the Nation



	APRIL 2011	APRIL 2010
<i>seasonally adjusted</i>		
NY City	8.6%	9.8%
NY State	7.9%	8.7%
U.S.	9.0%	9.8%

Job Sectors <i>(in descending order from most absolute job growth in past year)</i>	Jobs in 1,000s			Change	
	APR 2011	MAR 2011	APR 2010	1 Month	1 Year
Educational Services	191	190	177	0.5% ↑	7.6% ↑
Finance and Insurance	318	317	306	0.3% ↑	4.0% ↑
Professional, Scientific, and Technical Services	328	326	320	0.6% ↑	2.6% ↑
Accommodation and Food Service	259	254	252	2.2% ↑	2.9% ↑
Administrative and Support and Waste Management	197	193	191	2.0% ↑	3.4% ↑
Health Care and Social Assistance	587	588	582	-0.3% ↓	0.8% ↑
Retail Trade	302	301	297	0.3% ↑	1.4% ↑
Information	164	163	162	0.6% ↑	1.5% ↑
Wholesale Trade	138	138	136	-0.2% ↓	1.3% ↑
Management of Companies	64	64	62	-0.2% ↓	2.1% ↑
Real Estate and Rental and Leasing	119	116	118	2.2% ↑	0.9% ↑
Utilities	16	16	16	0.0% ↔	-1.3% ↓
Transportation and Warehousing	103	102	103	1.2% ↑	-0.4% ↓
Other Services	160	160	161	-0.1% ↓	-0.8% ↓
Manufacturing	73	74	77	-1.5% ↓	-4.3% ↓
Arts, Entertainment, and Recreation	64	62	68	3.1% ↑	-6.3% ↓
Construction and Mining	103	104	113	-0.1% ↓	-8.3% ↓
Government	547	547	565	0.0% ↔	-3.2% ↓
Summary					
Goods Producing	177	178	189	-0.7% ↓	-6.7% ↓
Service Providing	3,554	3,536	3,515	0.5% ↑	1.1% ↑
Private Service Providing	3,007	2,988	2,950	0.6% ↑	1.9% ↑
Subtotal Private	3,183	3,166	3,139	0.5% ↑	1.4% ↑
TOTAL	3,731	3,713	3,704	0.5% ↑	0.7% ↑

SOURCE | NYCLMIS analysis of New York State Department of Labor, Current Employment Statistics, April 2011 Jobs Report.