



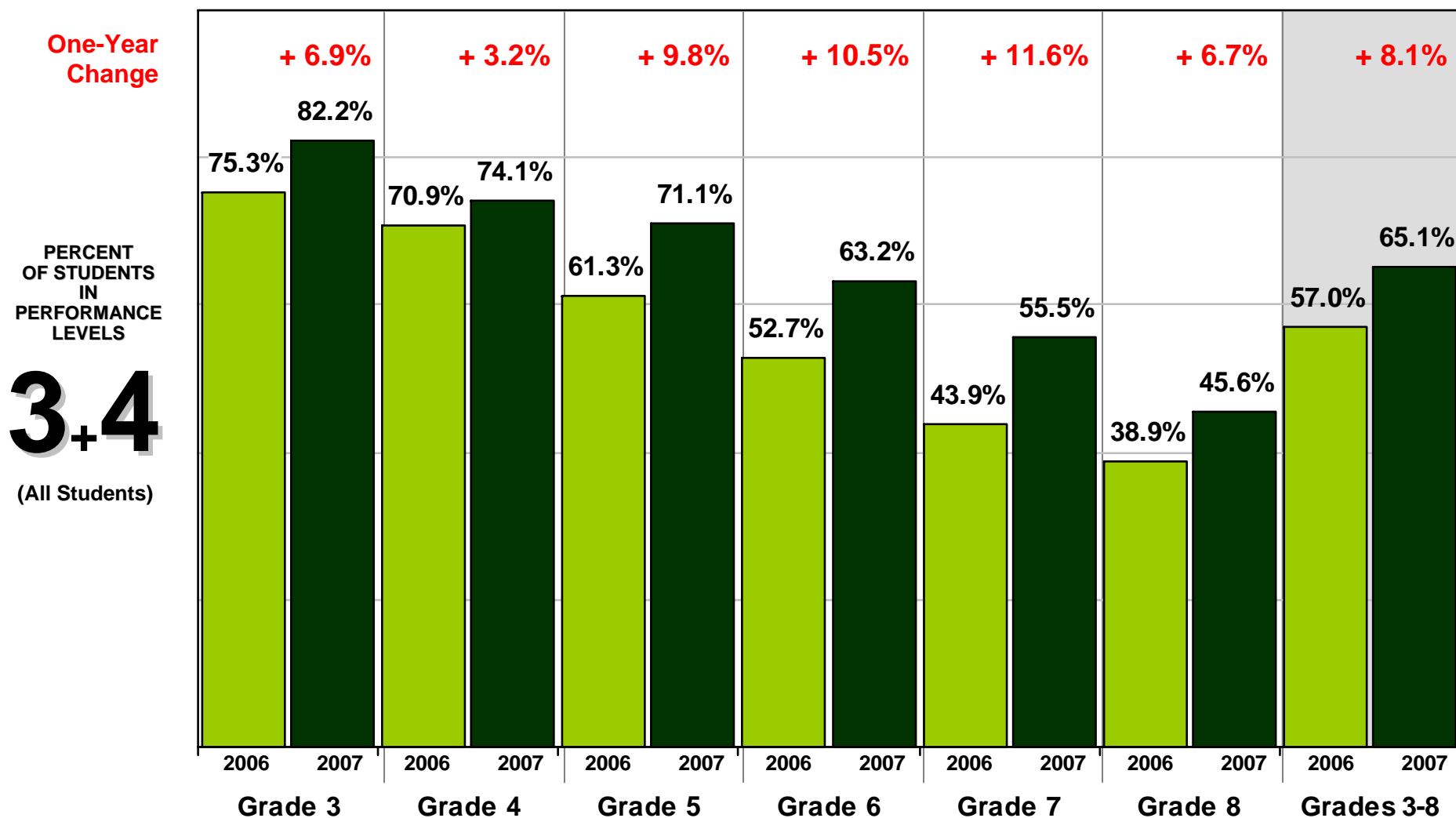
New York City Department of Education

Highlights
on the 2007 New York City Results
of the State Mathematics Assessments
(Grades 3 - 8)

June 12, 2007

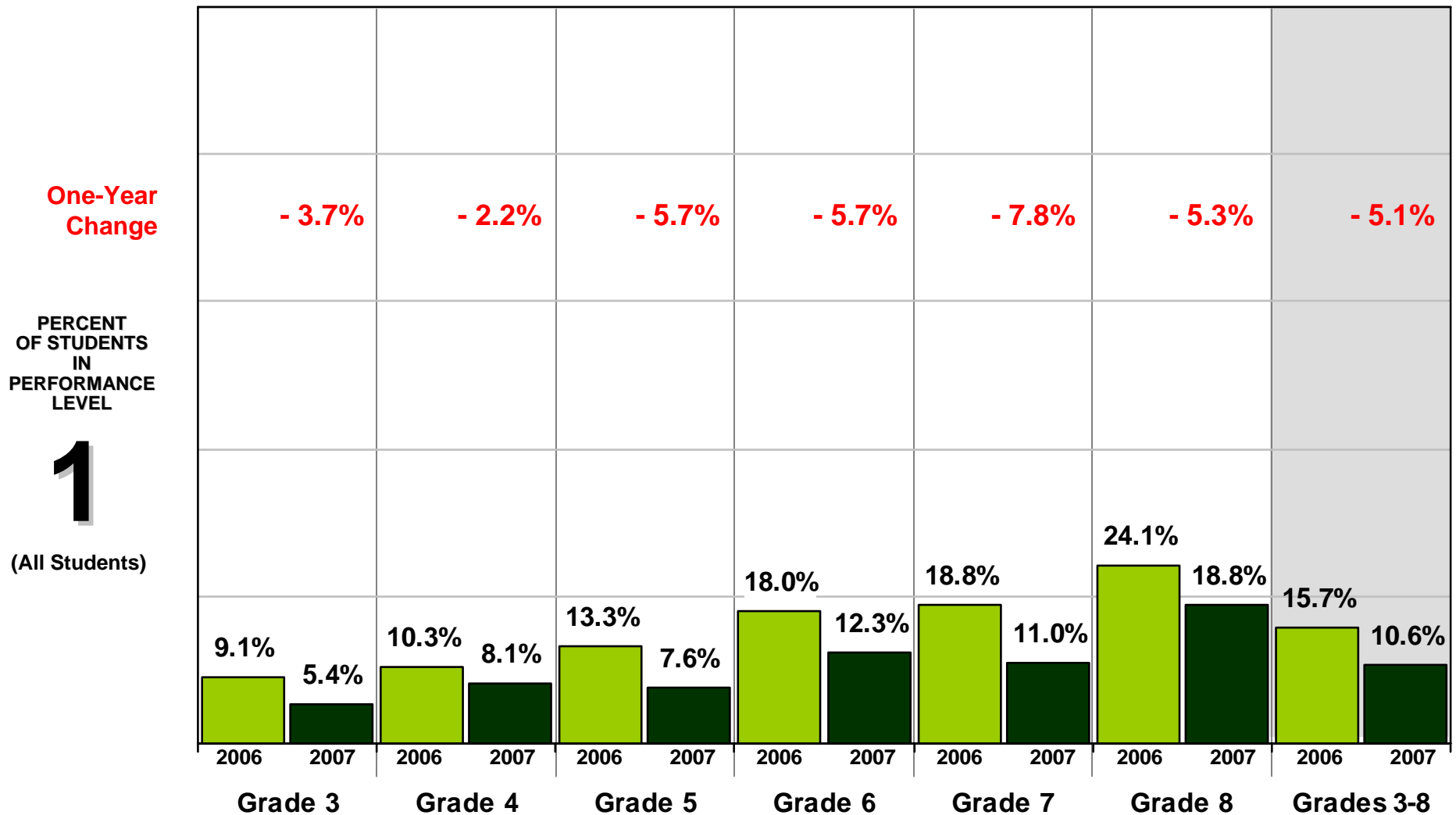
NEW YORK CITY RESULTS MATHEMATICS

Students in Performance Levels 3 + 4 2006-2007



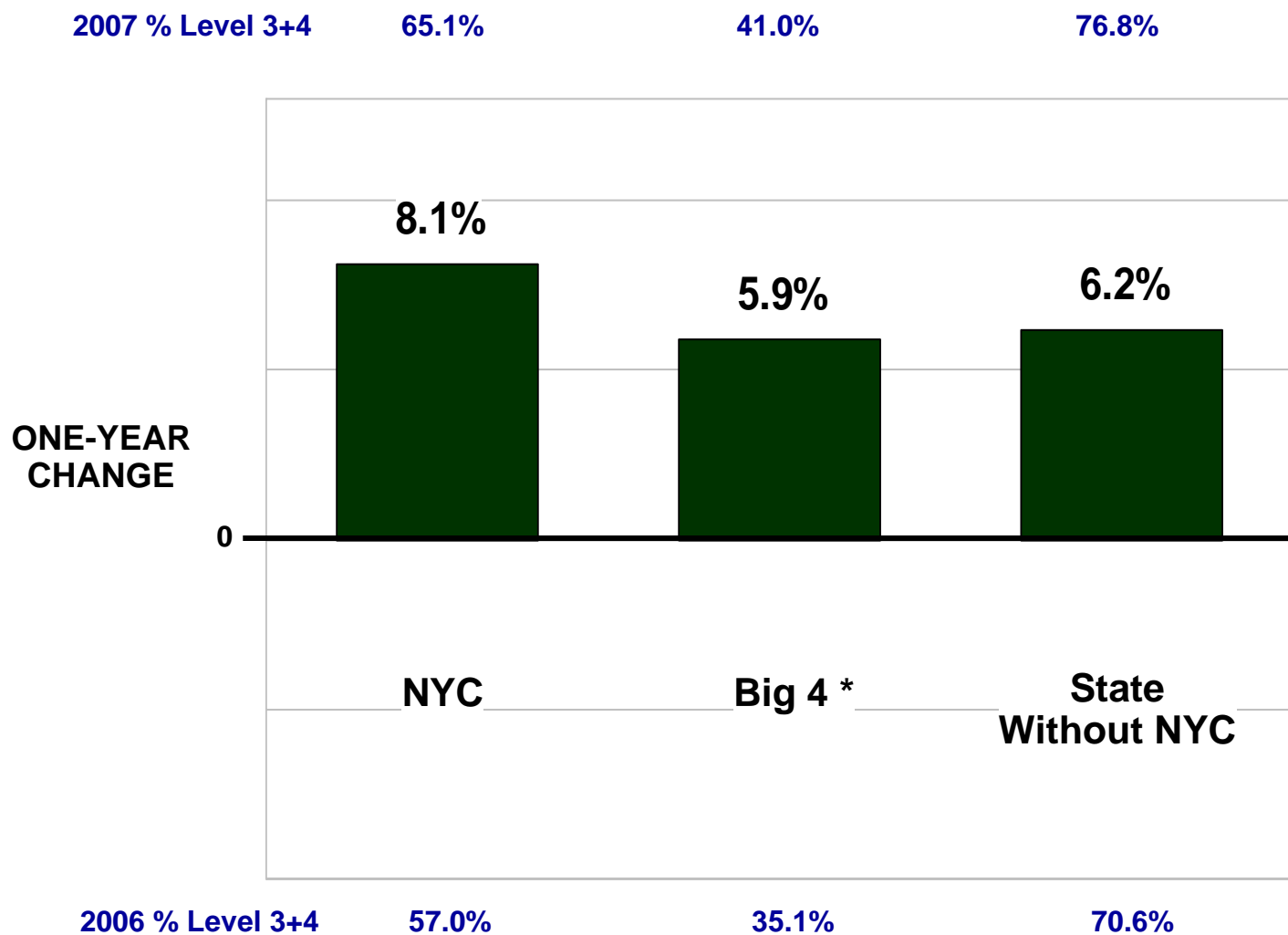
NOTE: In 2005-2006, the New York State Education Department expanded the ELA and mathematics testing programs to Grades 3-8. Previously, state tests were administered in Grades 4 and 8 and citywide tests were administered in Grades 3, 5, 6, and 7.

NEW YORK CITY RESULTS MATHEMATICS Students in Performance Level 1 2006-2007



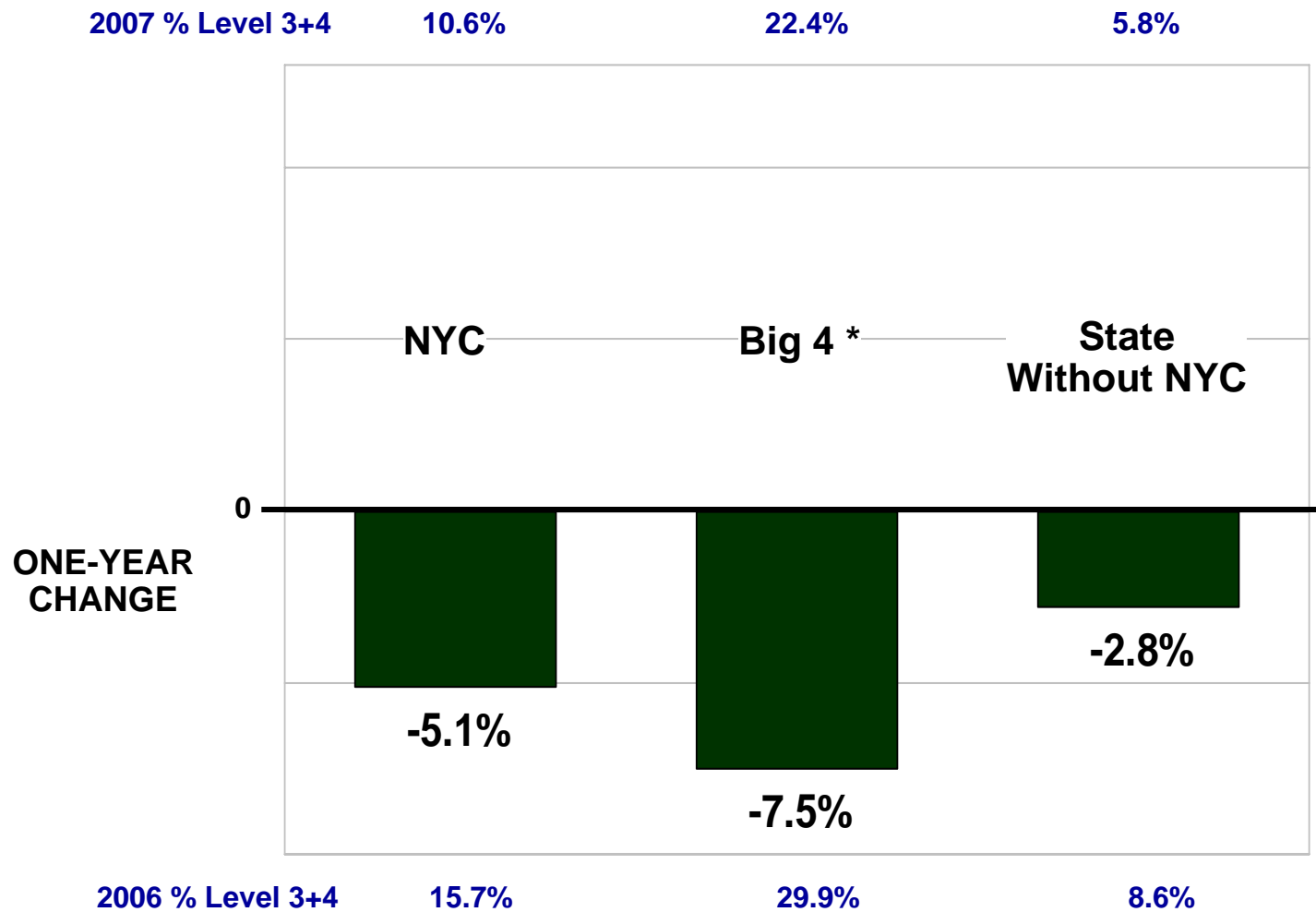
NOTE: In 2005-2006, the New York State Education Department expanded the ELA and mathematics testing programs to Grades 3-8. Previously, state tests were administered in Grades 4 and 8 and citywide tests were administered in Grades 3, 5, 6, and 7.

**NEW YORK CITY RESULTS
MATHEMATICS
GRADES 3 - 8
Performance Change at Levels 3 + 4**



* Buffalo, Rochester, Syracuse, and Yonkers

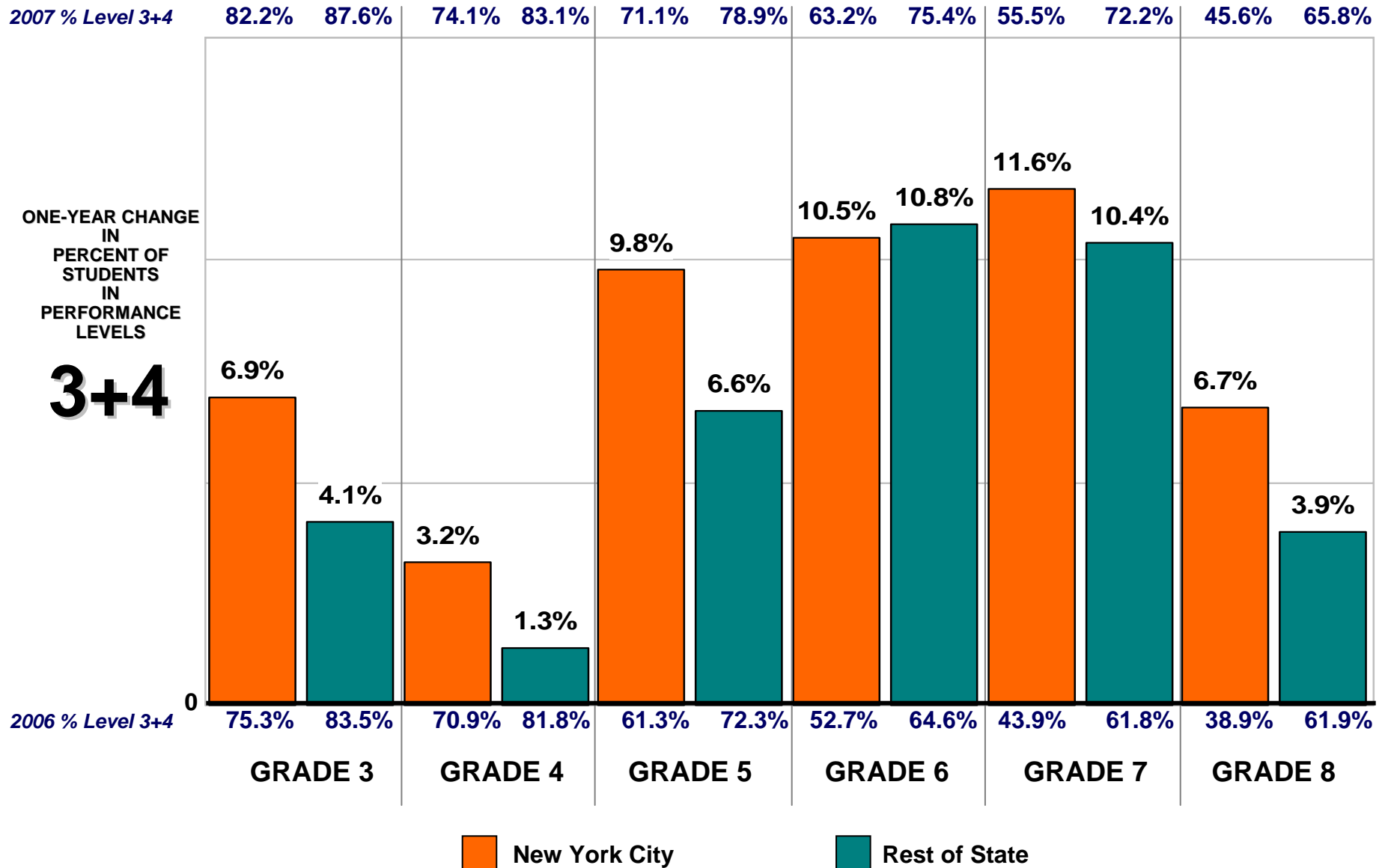
**NEW YORK CITY RESULTS
MATHEMATICS
GRADES 3 - 8
Performance Change at Level 1**



* Buffalo, Rochester, Syracuse, and Yonkers

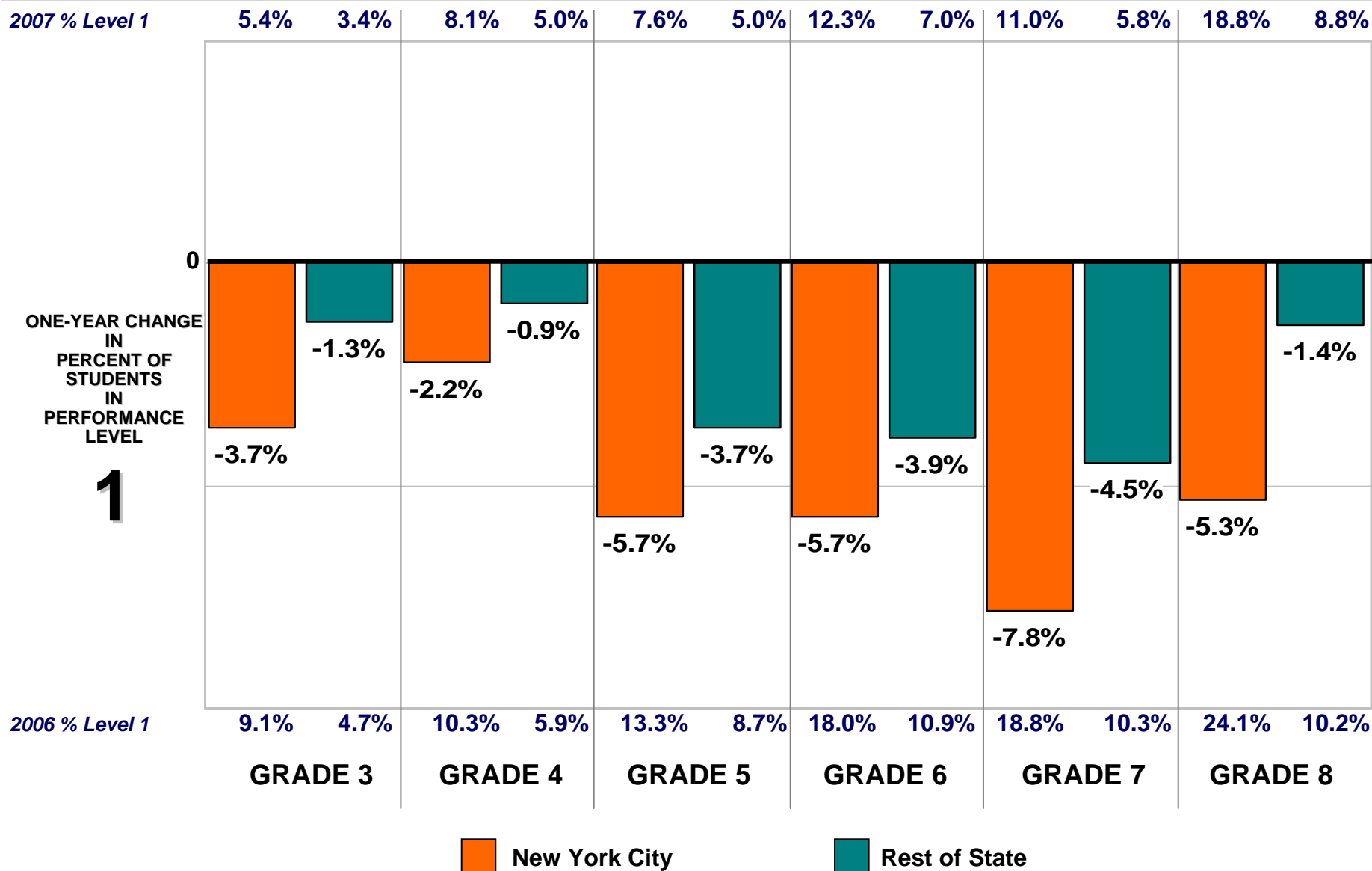
NEW YORK CITY RESULTS MATHEMATICS

2006 - 2007 Performance Changes at Levels 3 + 4 New York City and Rest of State Comparison Grades 3, 4, 5, 6, 7, 8



NEW YORK CITY RESULTS MATHEMATICS

2006 - 2007 Performance Changes at Level 1 New York City and Rest of State Comparison Grades 3, 4, 5, 6, 7, 8



NEW YORK CITY RESULTS MATHEMATICS

Students in Performance Levels 3 + 4 New York City Compared to New York State

NYC - NYS gap

3.0%

5.8%

5.0%

8.0%

10.9%

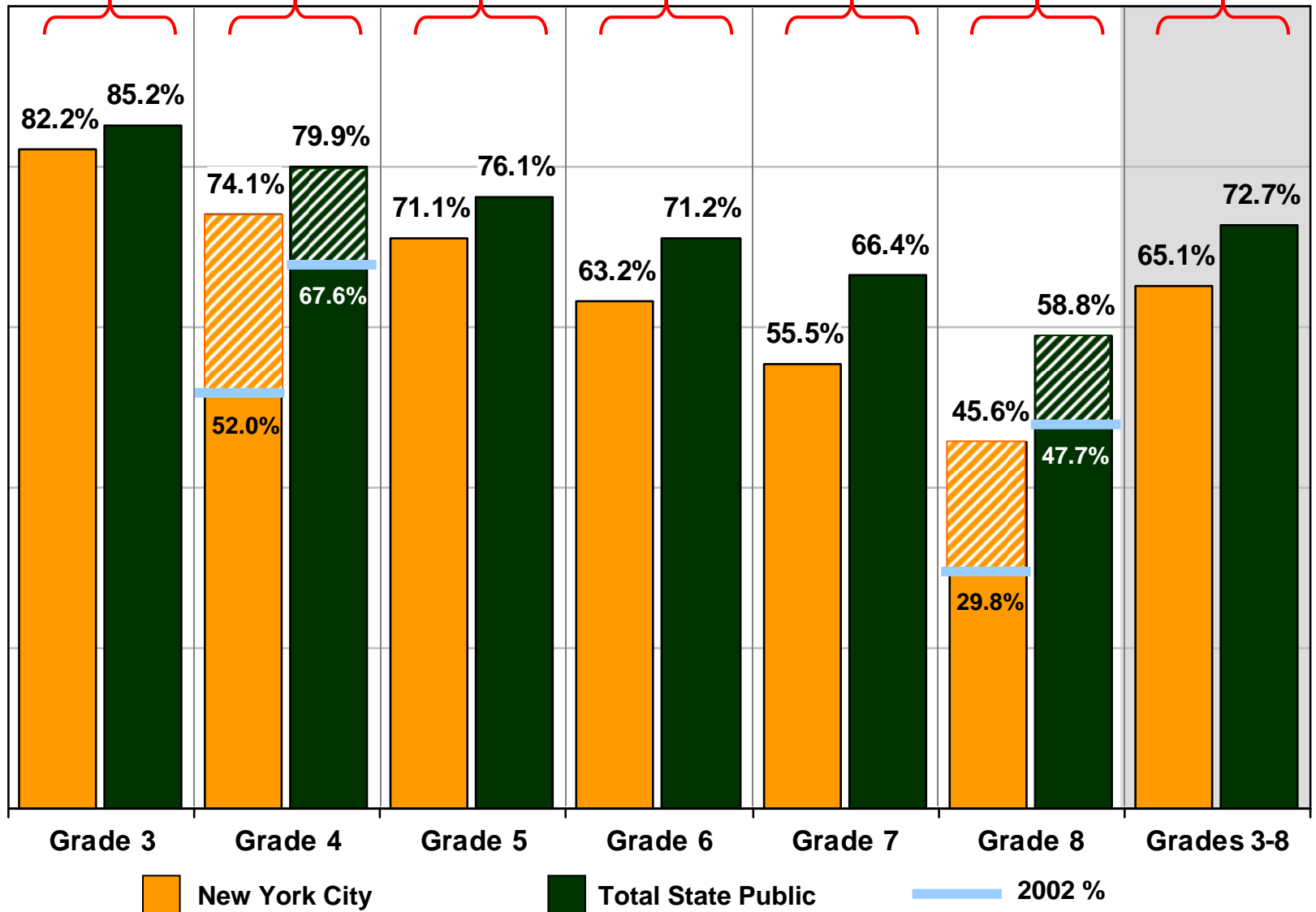
13.2%

7.6%

PERCENT
OF STUDENTS
IN
PERFORMANCE
LEVELS

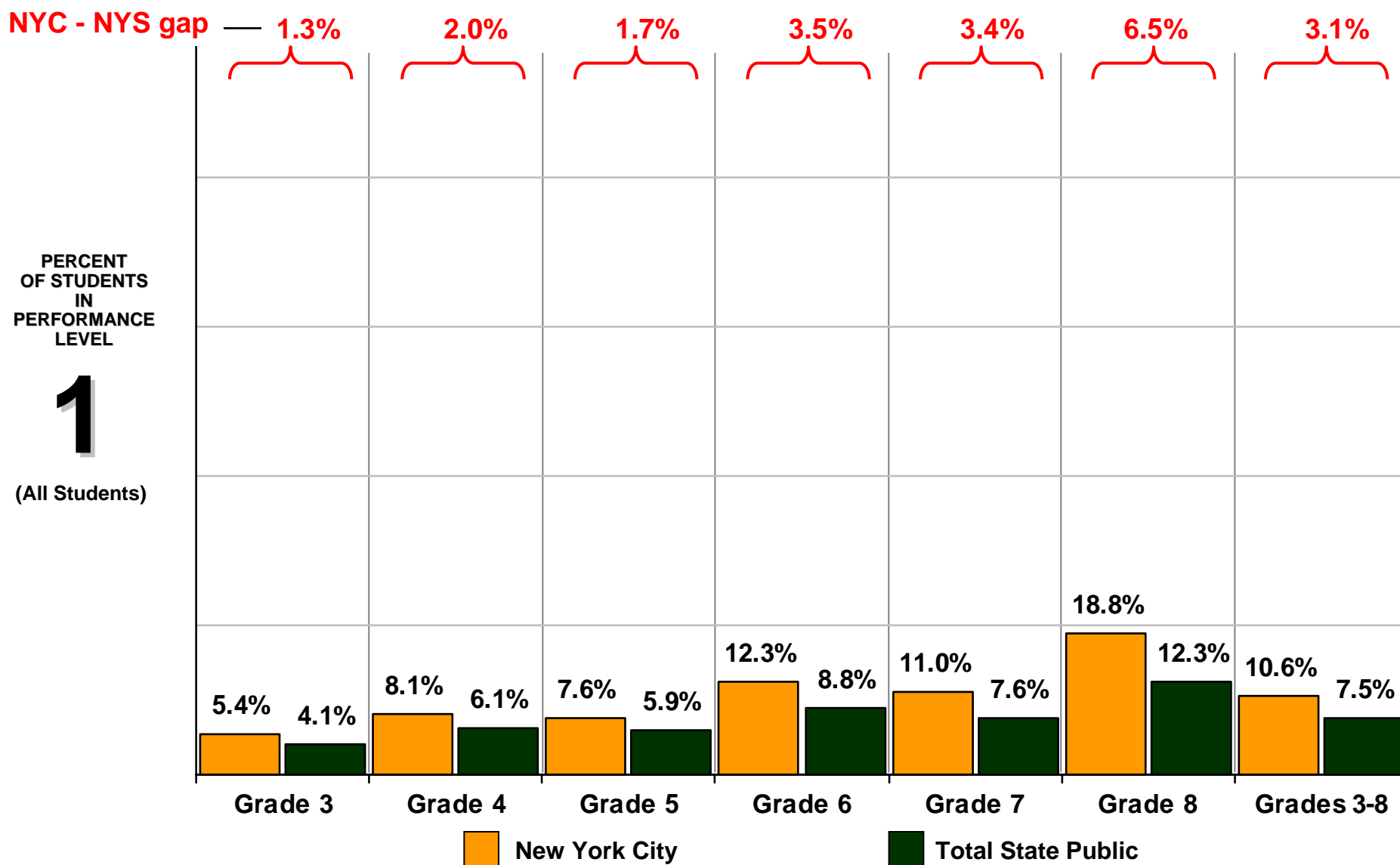
3+4

(All Students)



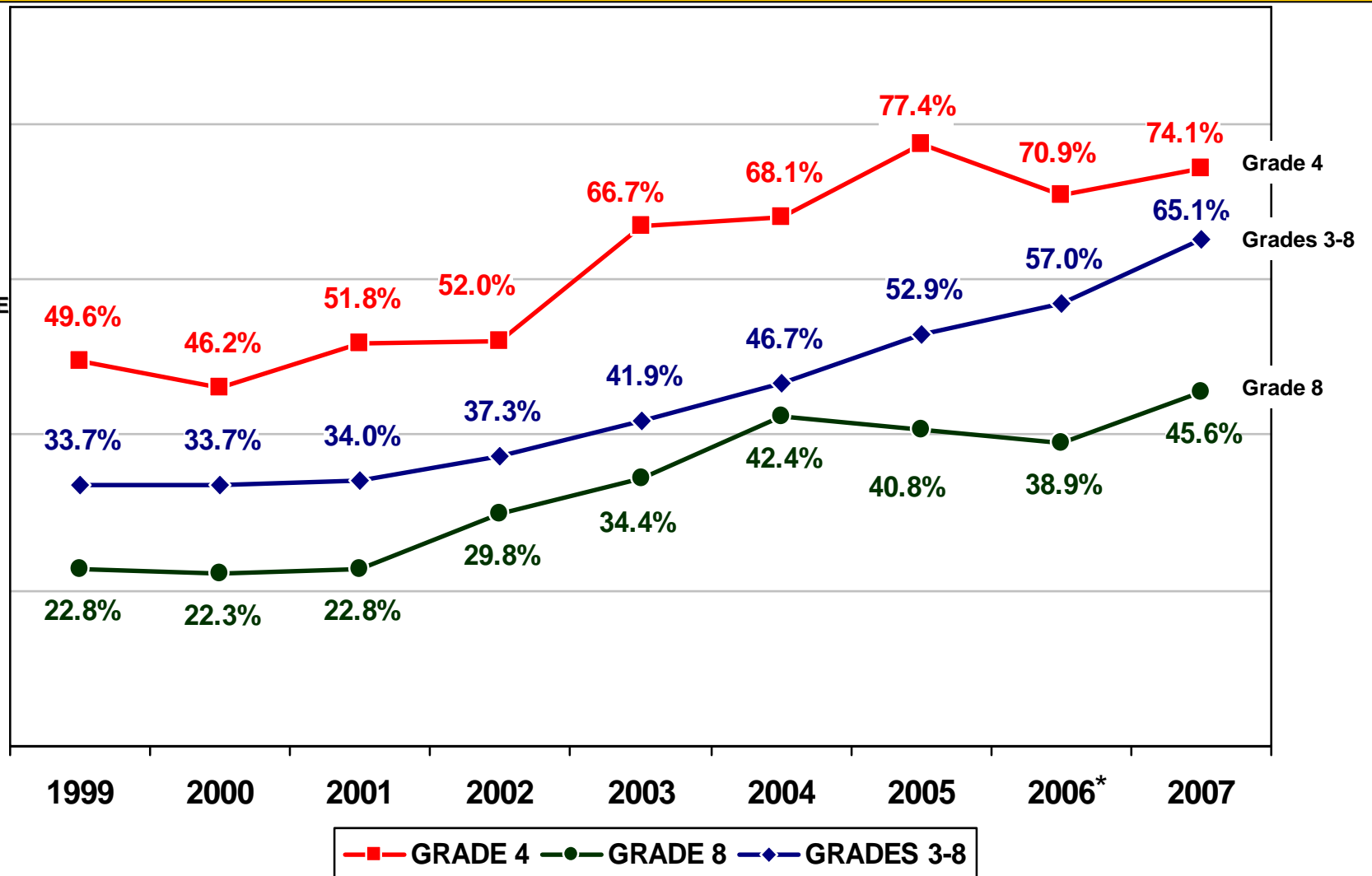
NEW YORK CITY RESULTS MATHEMATICS

Students in Performance Level 1 New York City Compared to New York State



NEW YORK CITY RESULTS MATHEMATICS Levels 3 + 4 GRADES 4, 8, and 3-8 1999-2007

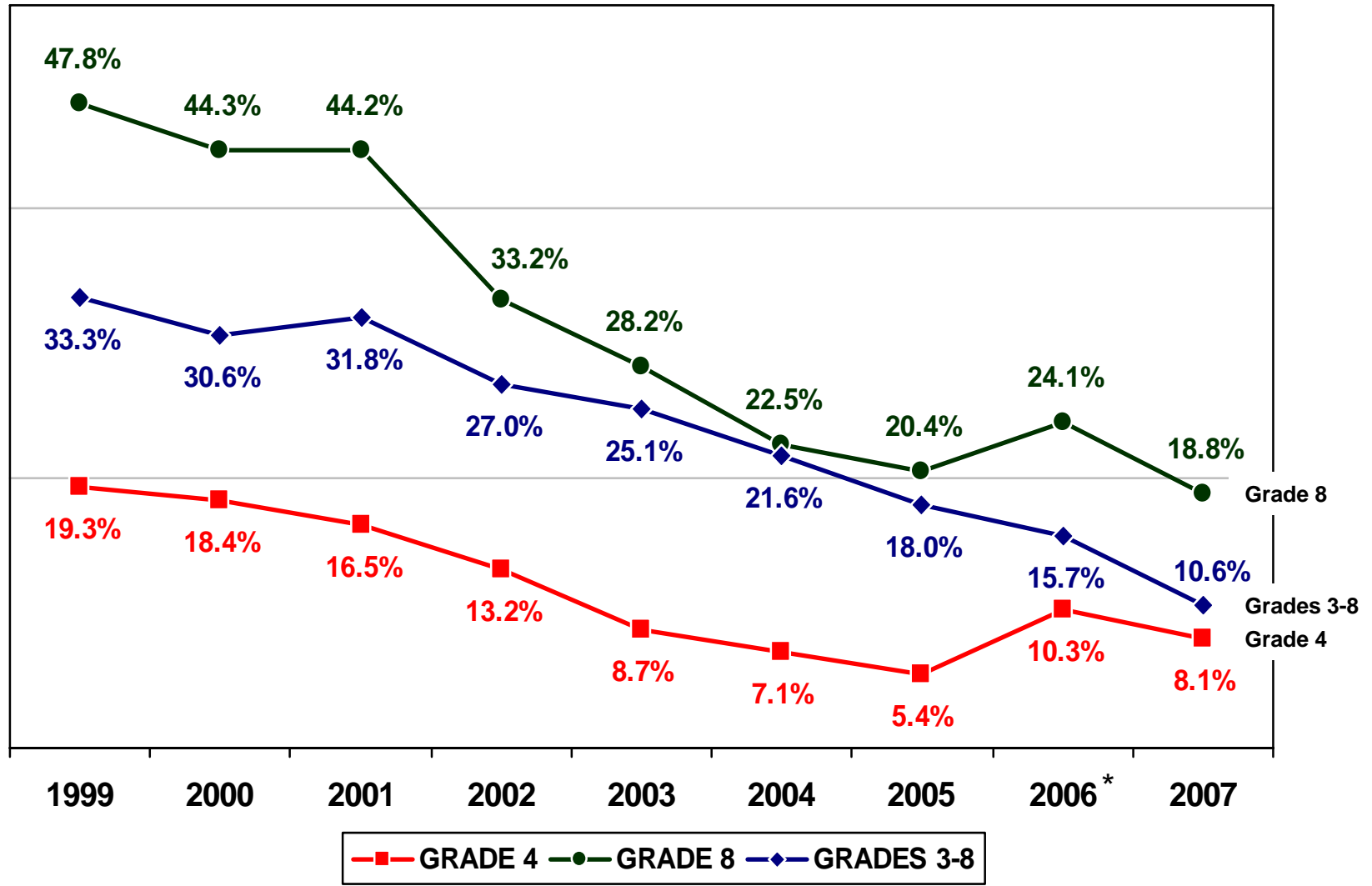
PERCENT
OF STUDENTS
IN PERFORMANCE
LEVELS
3+4
(All Students)



* In 2005-2006, the New York State Education Department expanded the ELA and mathematics testing programs to Grades 3-8. Previously, state tests were administered in Grades 4 and 8 and citywide tests were administered in Grades 3, 5, 6, and 7. State tests at Grades 3-8 include both multiple-choice and extended response questions. Citywide tests were composed of multiple-choice questions only.

NEW YORK CITY RESULTS MATHEMATICS Level 1 GRADES 4, 8, and 3-8 1999-2007

PERCENT
OF STUDENTS
IN PERFORMANCE
LEVEL
1
(All Students)



* In 2005-2006, the New York State Education Department expanded the ELA and mathematics testing programs to Grades 3-8. Previously, state tests were administered in Grades 4 and 8 and citywide tests were administered in Grades 3, 5, 6, and 7. State tests at Grades 3-8 include both multiple-choice and extended response questions. Citywide tests were composed of multiple-choice questions only.

NEW YORK CITY PROGRESS BY RACE/ETHNICITY AT LEVELS 3 AND 4 GRADES 3 – 8 MATHEMATICS

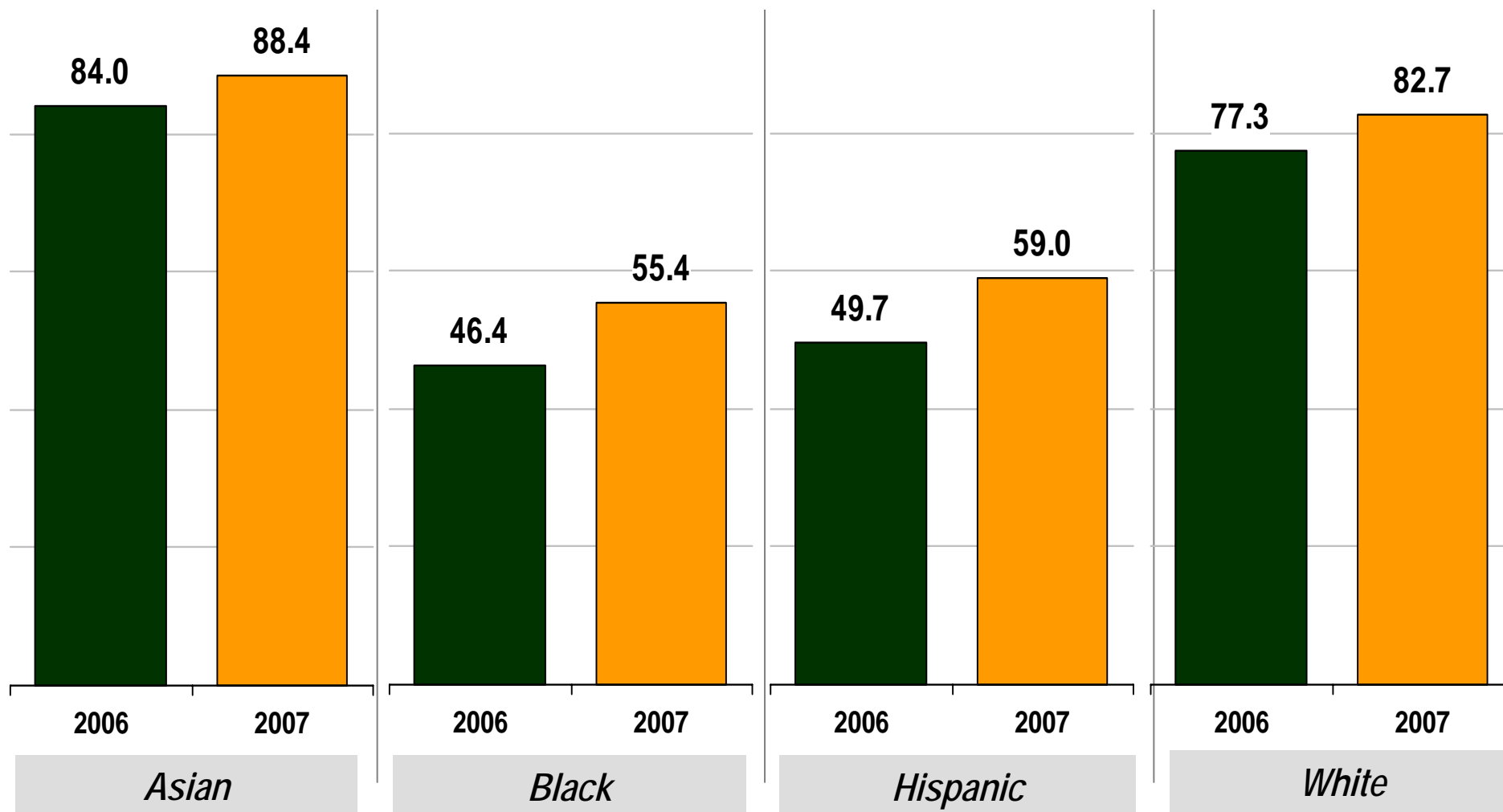
*Percent of Students at Performance Levels 3+4
and one-year change*

One-year change: **+ 4.4%**

+ 9.0%

+ 9.3%

+ 5.4%



NEW YORK CITY PROGRESS BY RACE/ETHNICITY AT LEVEL 1 GRADES 3 – 8 MATHEMATICS

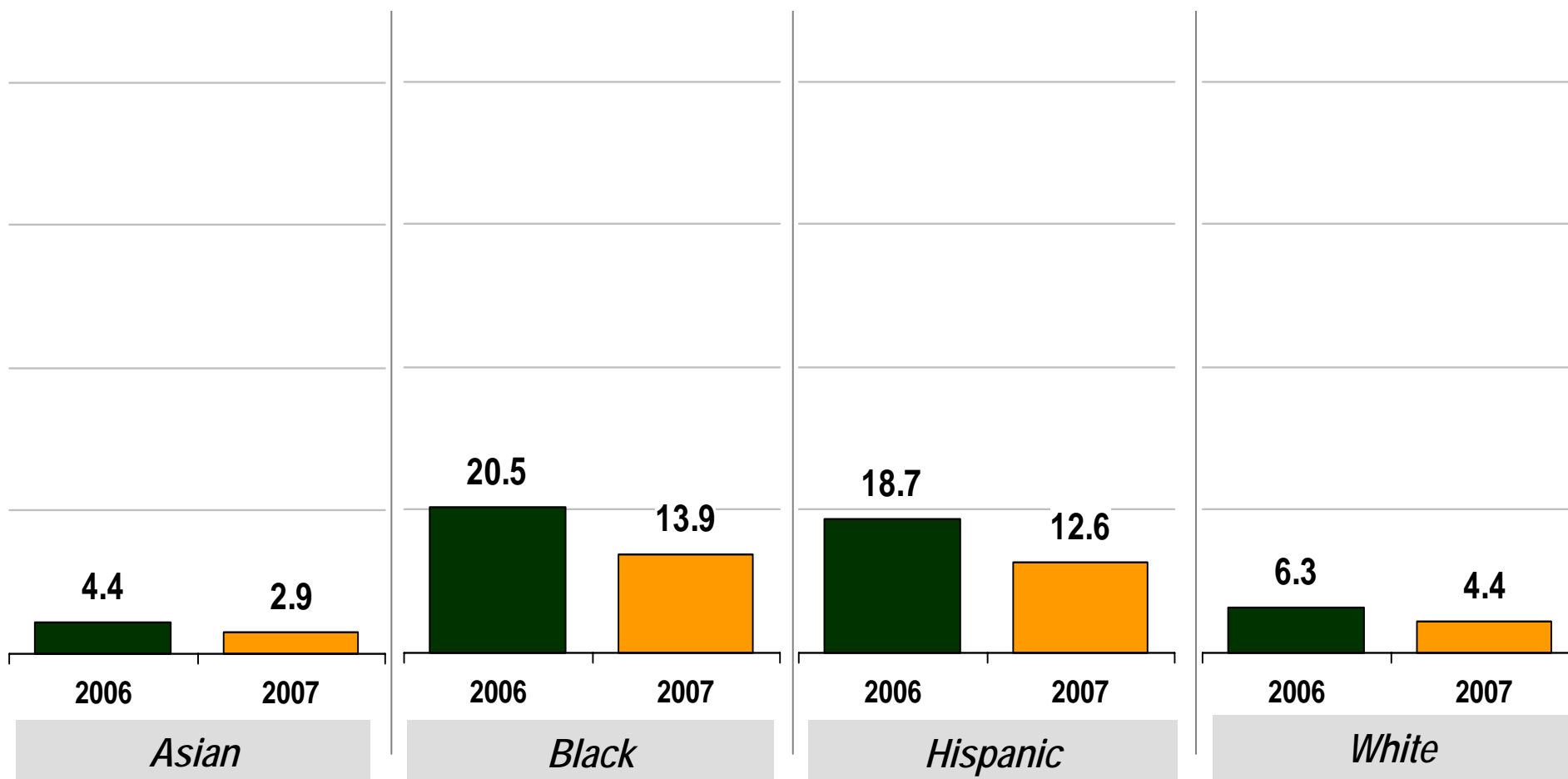
*Percent of Students at Performance Level 1
and one-year change*

One-year change: - 1.5%

- 6.6%

- 6.1%

- 1.9%



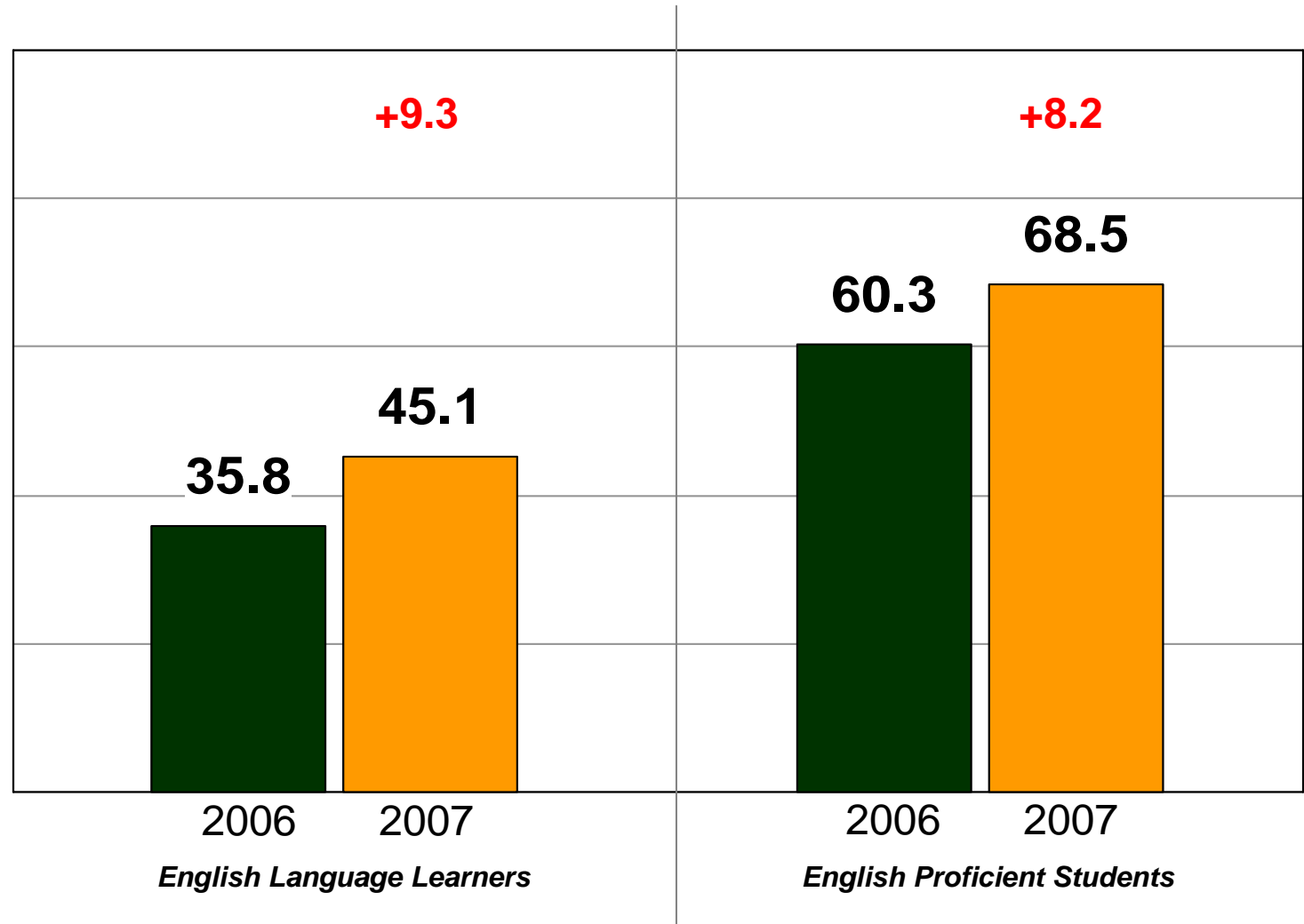
**NEW YORK CITY RESULTS
MATHEMATICS
GRADES 3 - 8**

New York City Results by English Proficiency Status

One-year change

PERCENT OF
STUDENTS
IN
PERFORMANCE
LEVELS

3+4



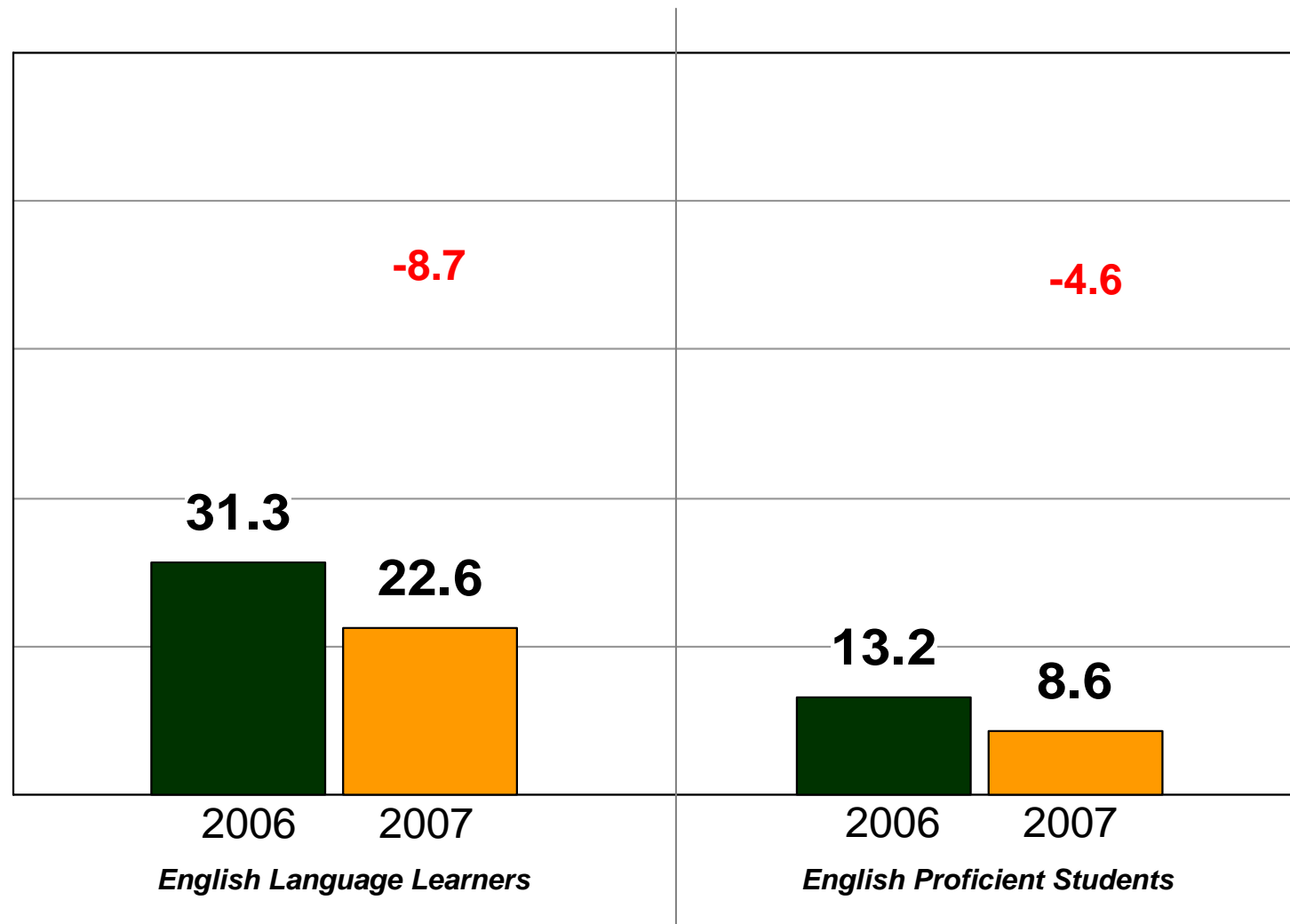
**NEW YORK CITY RESULTS
MATHEMATICS
GRADES 3 - 8**

New York City Results by English Proficiency Status

One-year change

PERCENT OF
STUDENTS
IN
PERFORMANCE
LEVEL

1

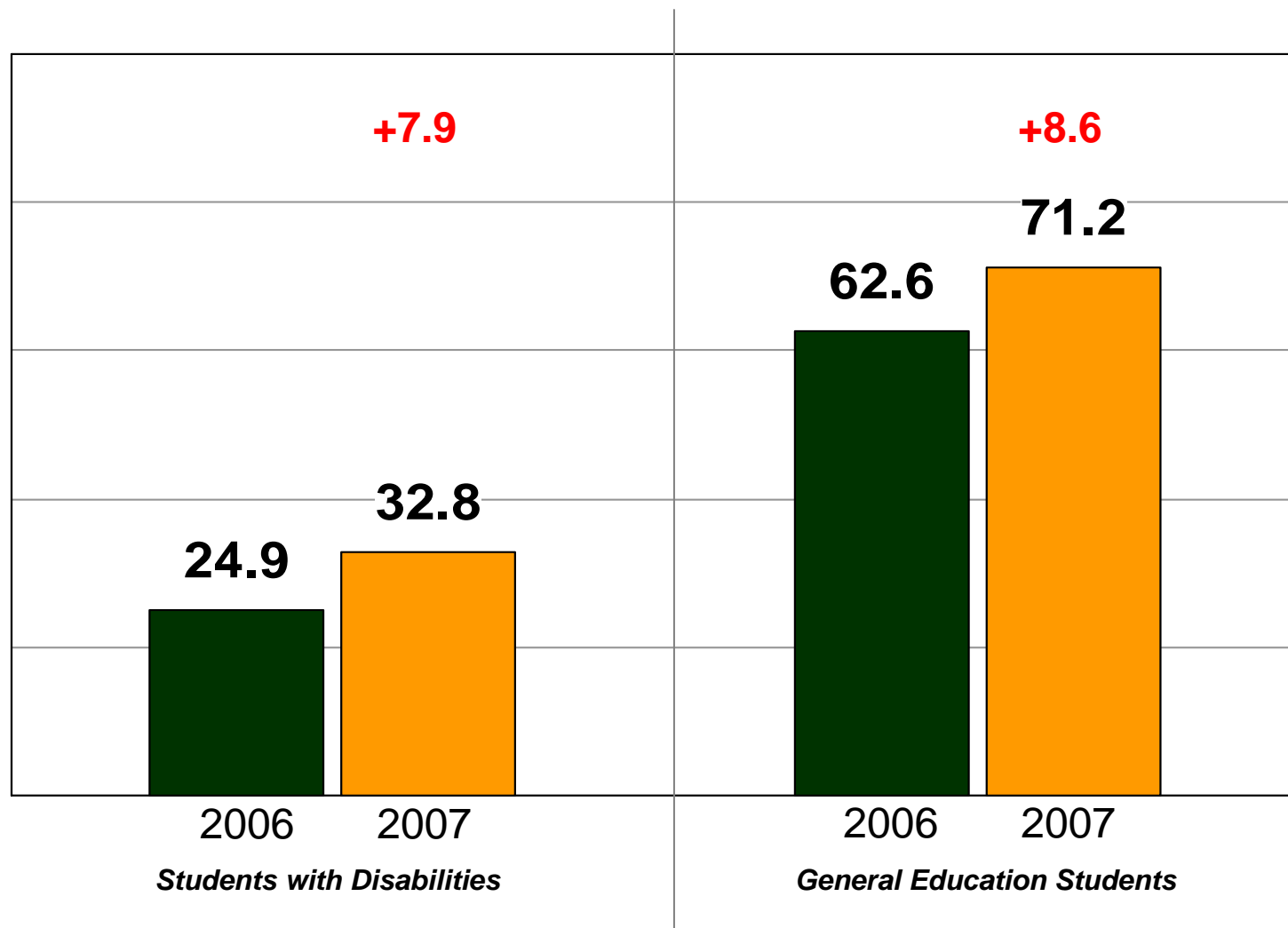


**NEW YORK CITY RESULTS
MATHEMATICS
GRADES 3 - 8**
New York City Results for Students with Disabilities

One-year change

PERCENT OF
STUDENTS
IN
PERFORMANCE
LEVELS

3+4



**NEW YORK CITY RESULTS
MATHEMATICS
GRADES 3 - 8**

New York City Results for Students with Disabilities

One-year change

PERCENT OF
STUDENTS
IN
PERFORMANCE
LEVEL

1

