



1



MTA NYC Transit

Urbahn Associates, Inc. • Daniel Frankfurt, PC Joint Venture

2

3

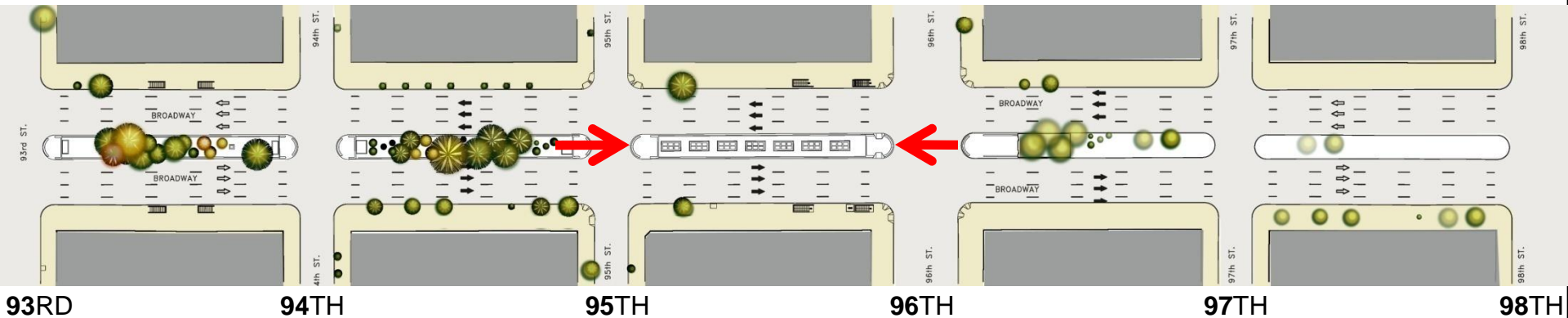
No Build Conditions



95th ST MEDIAN - NORTH

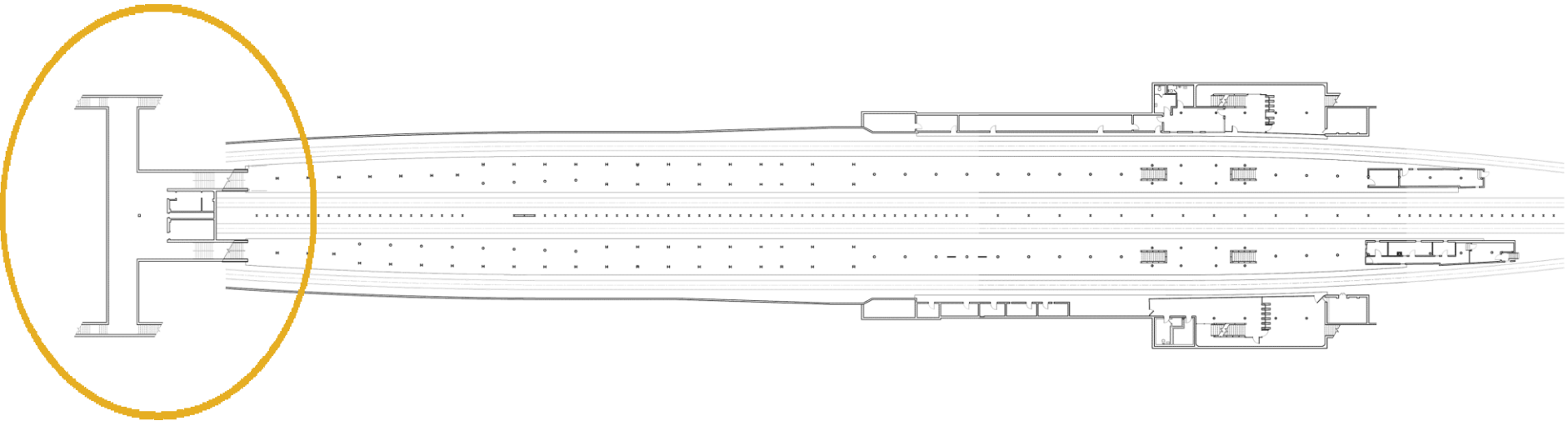


96th ST MEDIAN - SOUTH



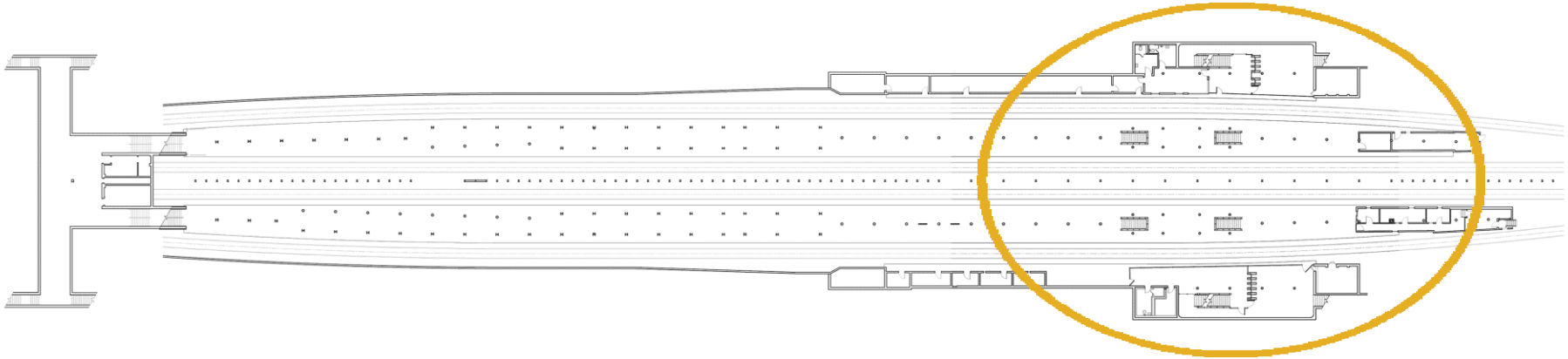
No Build Conditions

94th ST CONTROL AREAS AND PLATFORM



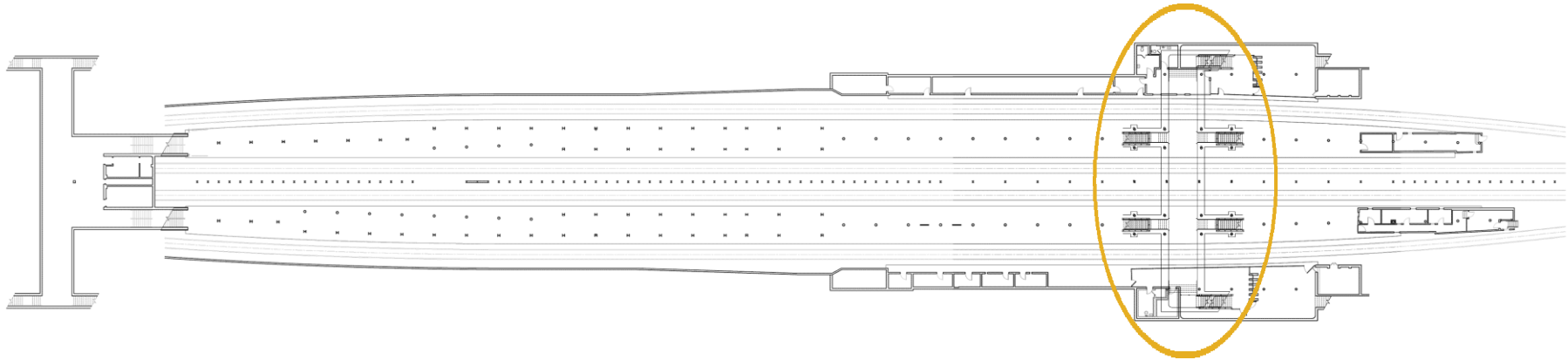
No Build Conditions

96th ST CONTROL AREAS AND PLATFORM



No Build Conditions

UNDERPASS



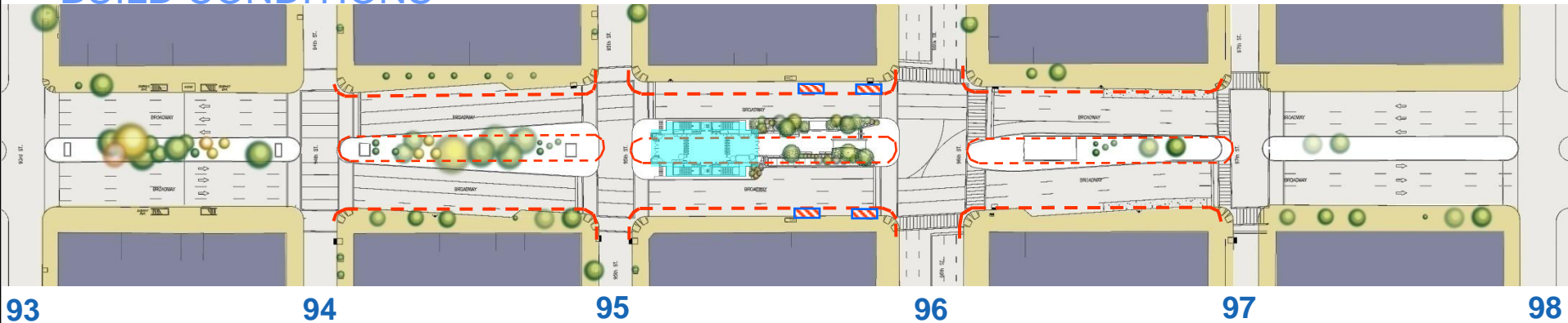
STATION HOUSE

(Street Level Plan)

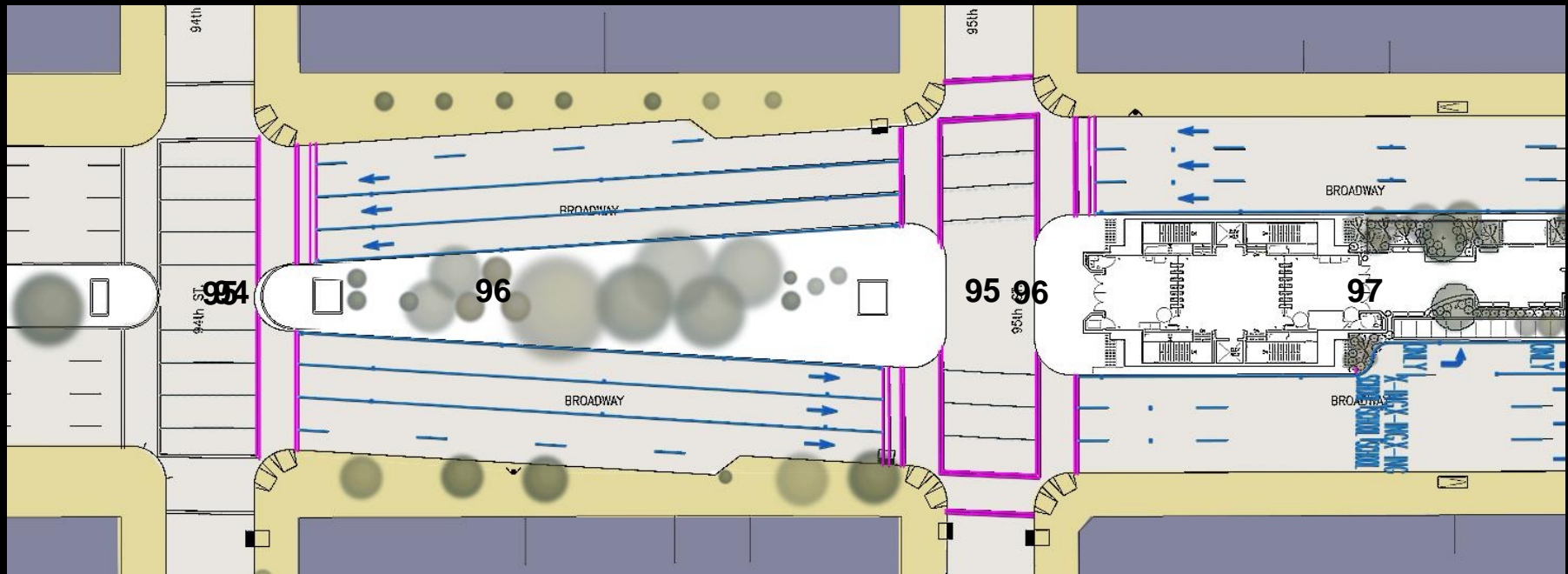
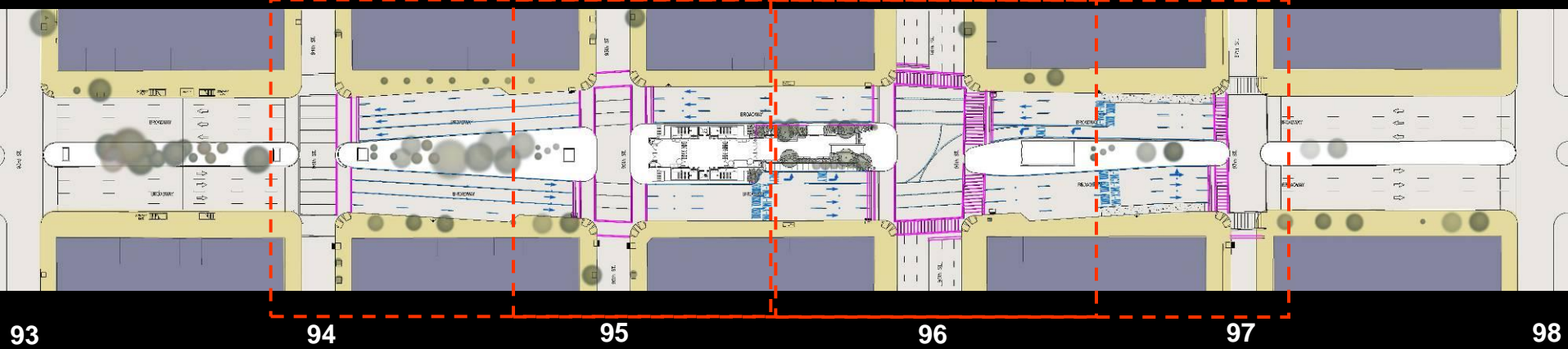
No Build CONDITIONS



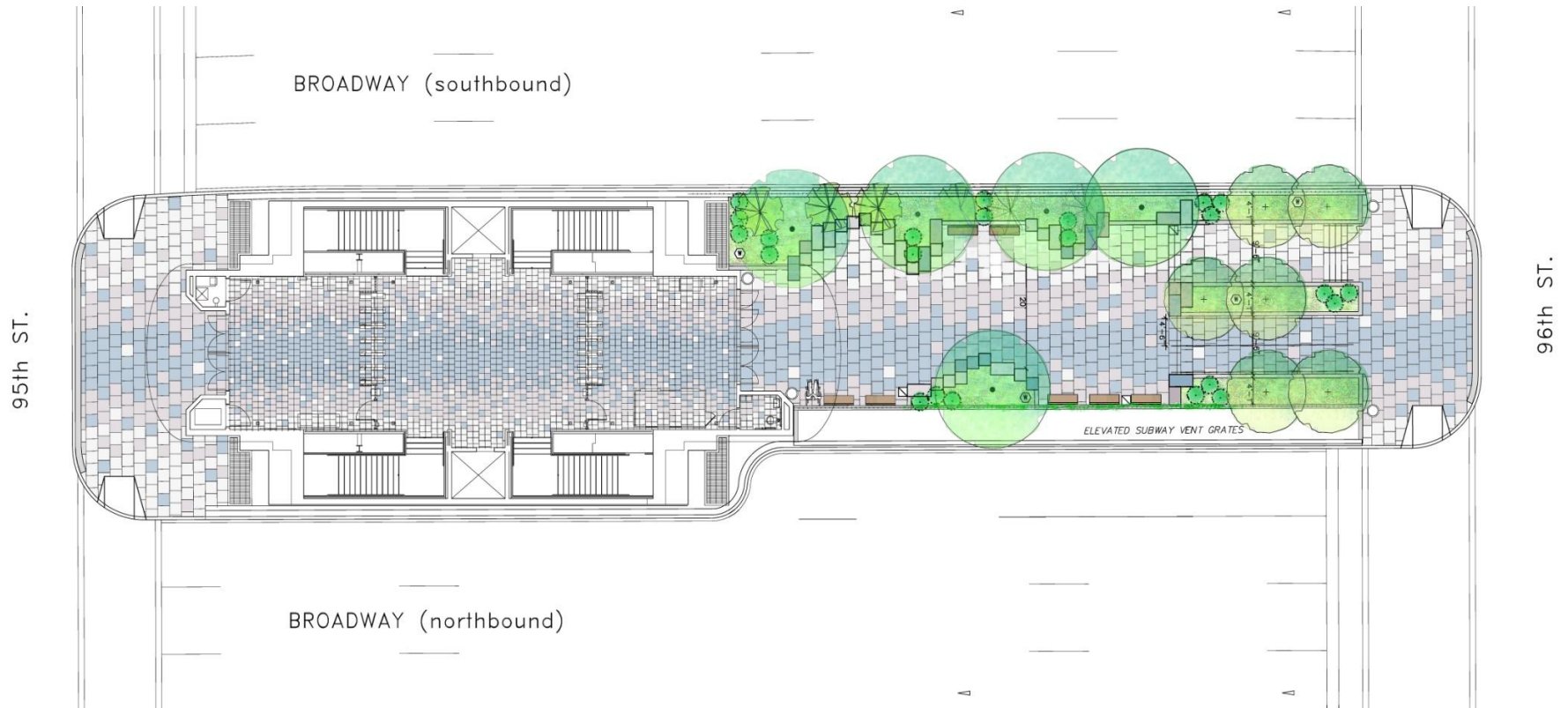
BUILD CONDITIONS



Roadway Plans

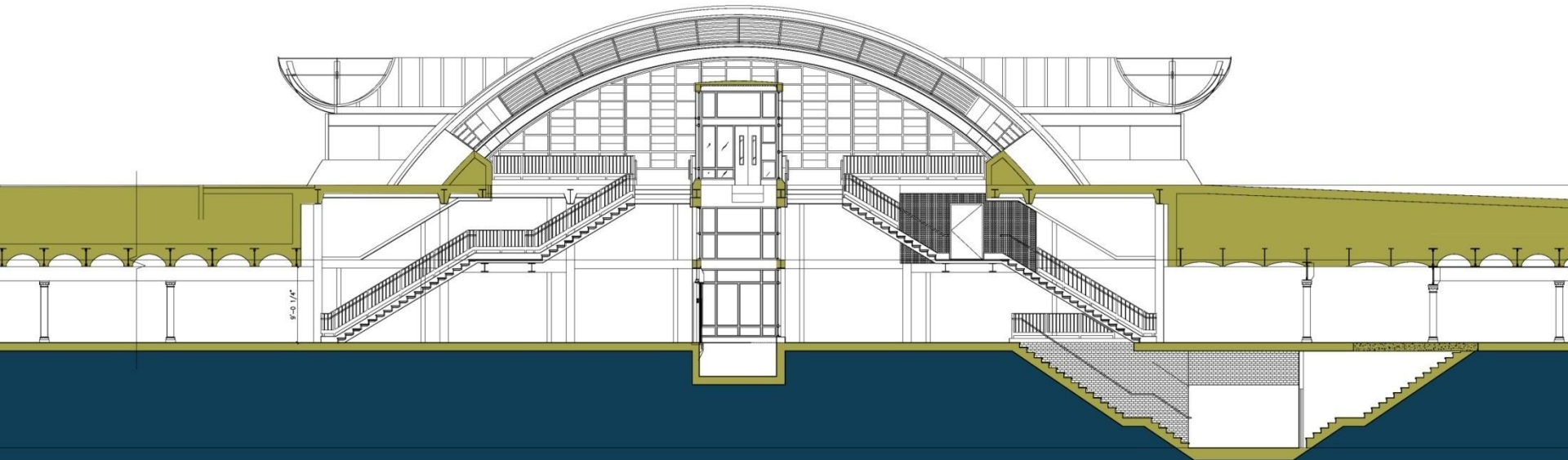
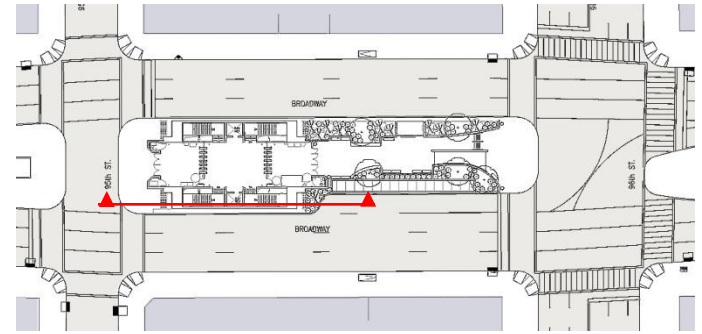


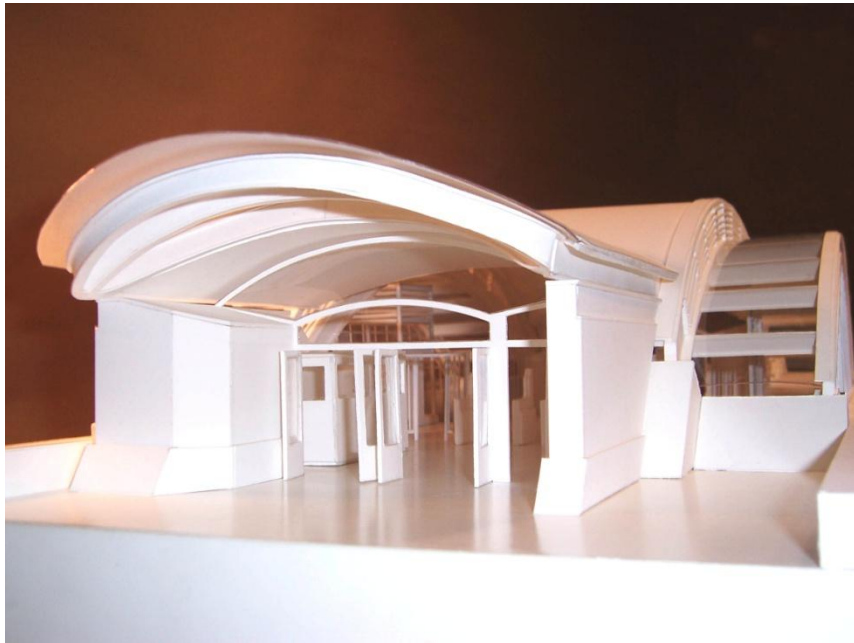
Project Site Plan



STATION HOUSE

Longitudinal Section





1

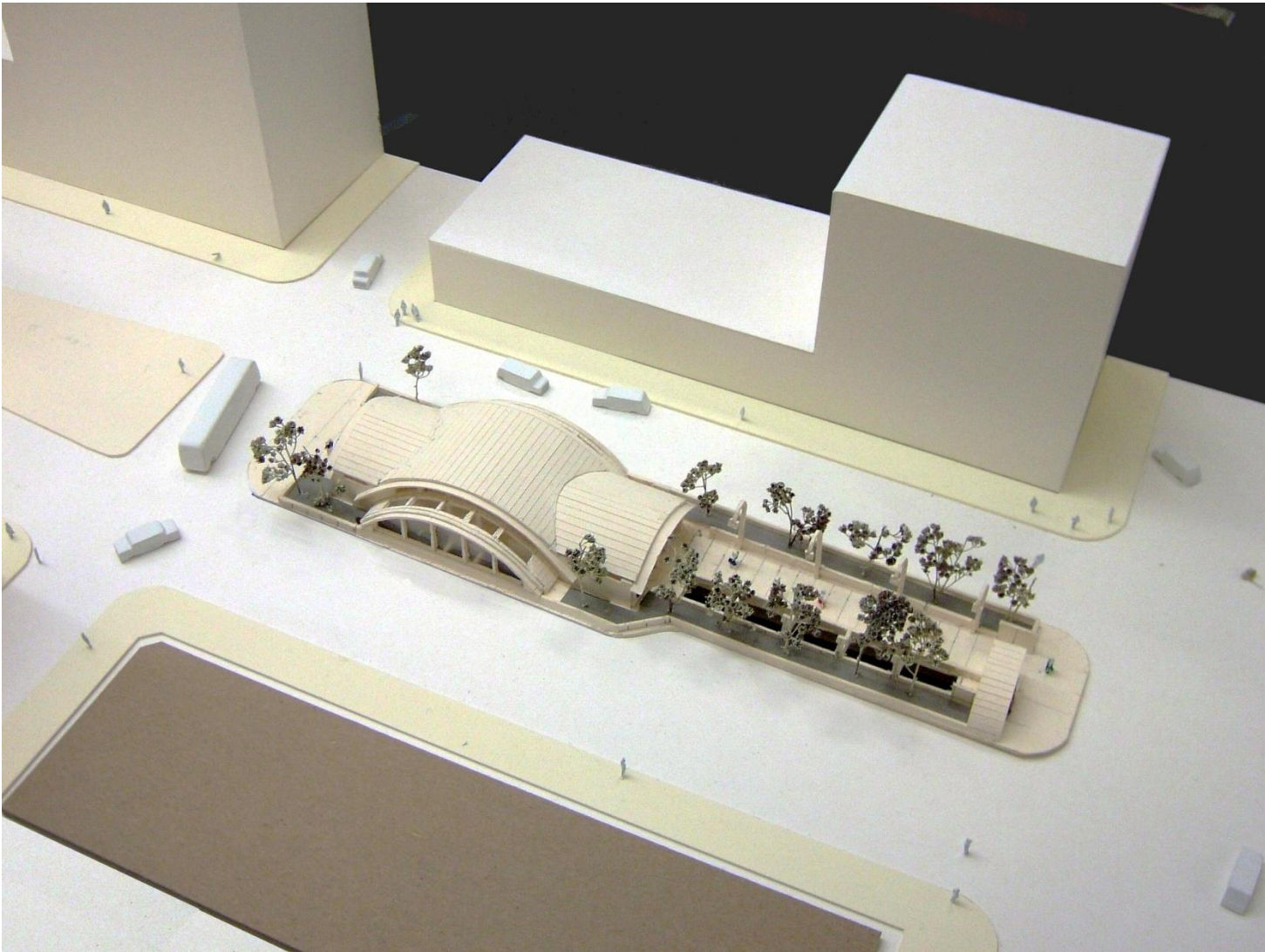


MTA NYC Transit

Urbahn Associates, Inc. • Daniel Frankfurt, PC Joint Venture

2

3



Schedule

May 2007 – Contract Award
Citnalta
Construction Inc.

August 2007 – Construction start
40 month contract

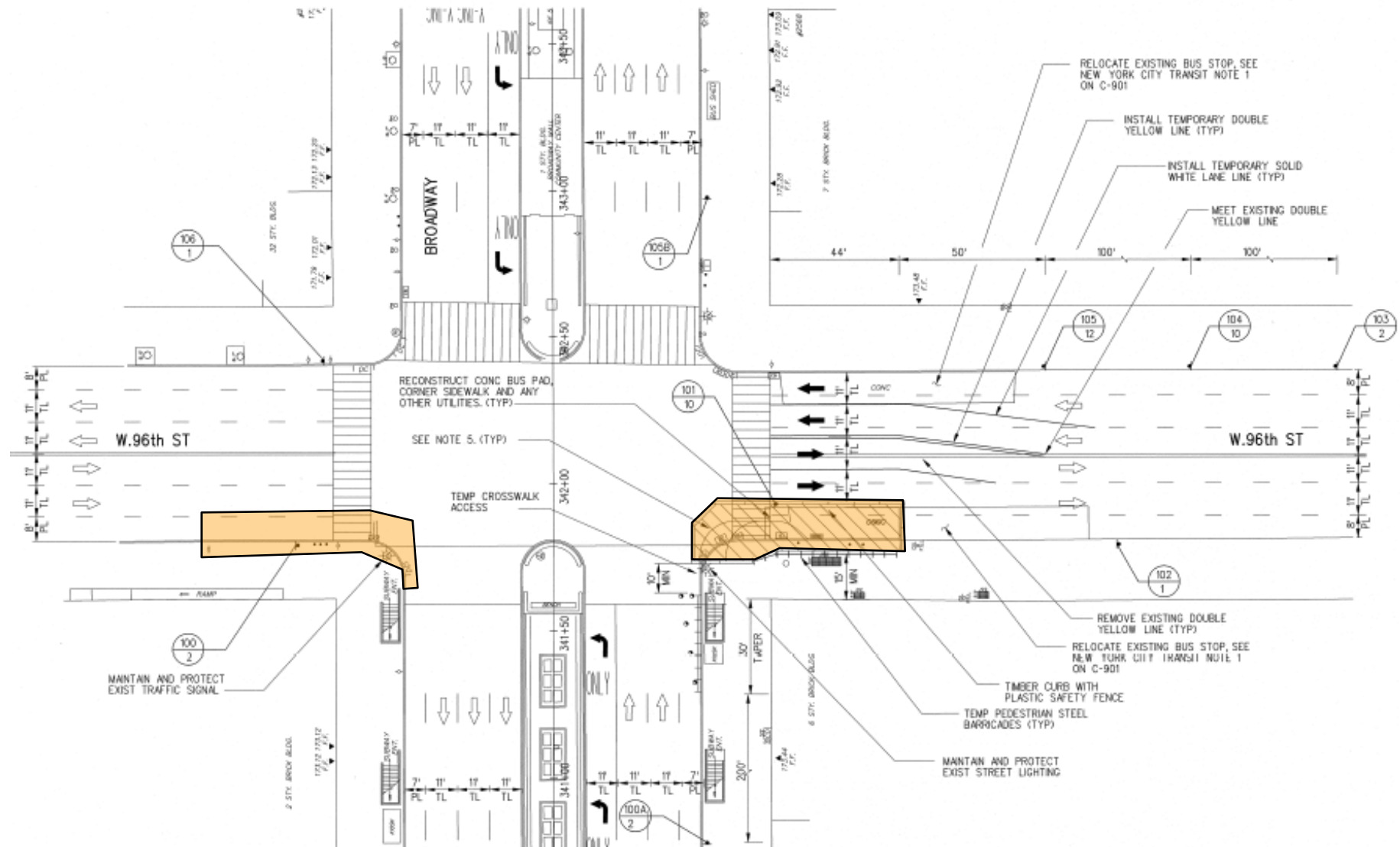
September 2010 – Substantial
completion

Stage 1A at 96th Street

Work started in August 2007

- Installed and removed temporary barricades along east side and west sides of Broadway
- Utility work completed
- Extended 96th Street curb at S/E corner
- Relocated bus stop (E/B M96 moved 60 ft east)
- Re-stripping roadway – late 2009

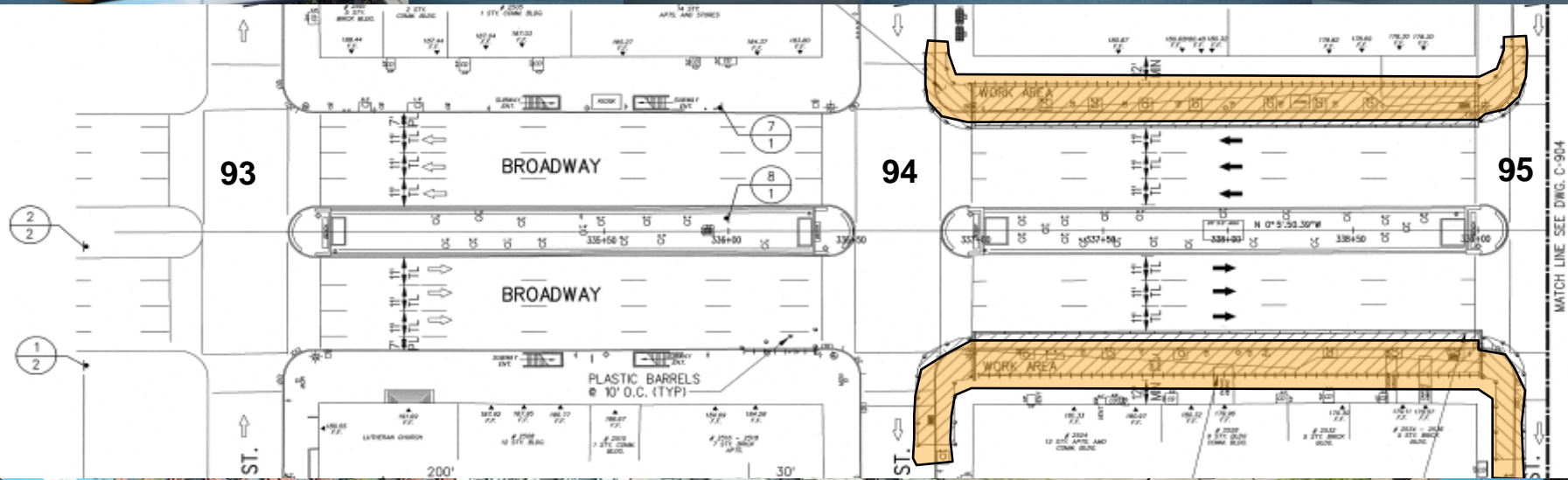
Bulb out 96th Street Corners



Stage 1B (94th to 95th Sts.)

Work started in mid-January 2008

- Utility work completed
- Curb and sidewalk work completed
- Transplanted trees
(Completed November 2007)
- Relocated newsstand (November 2007)
- Curb and sidewalk work complete
(January 2008)



Work Area Between 94th and 95th Streets

1



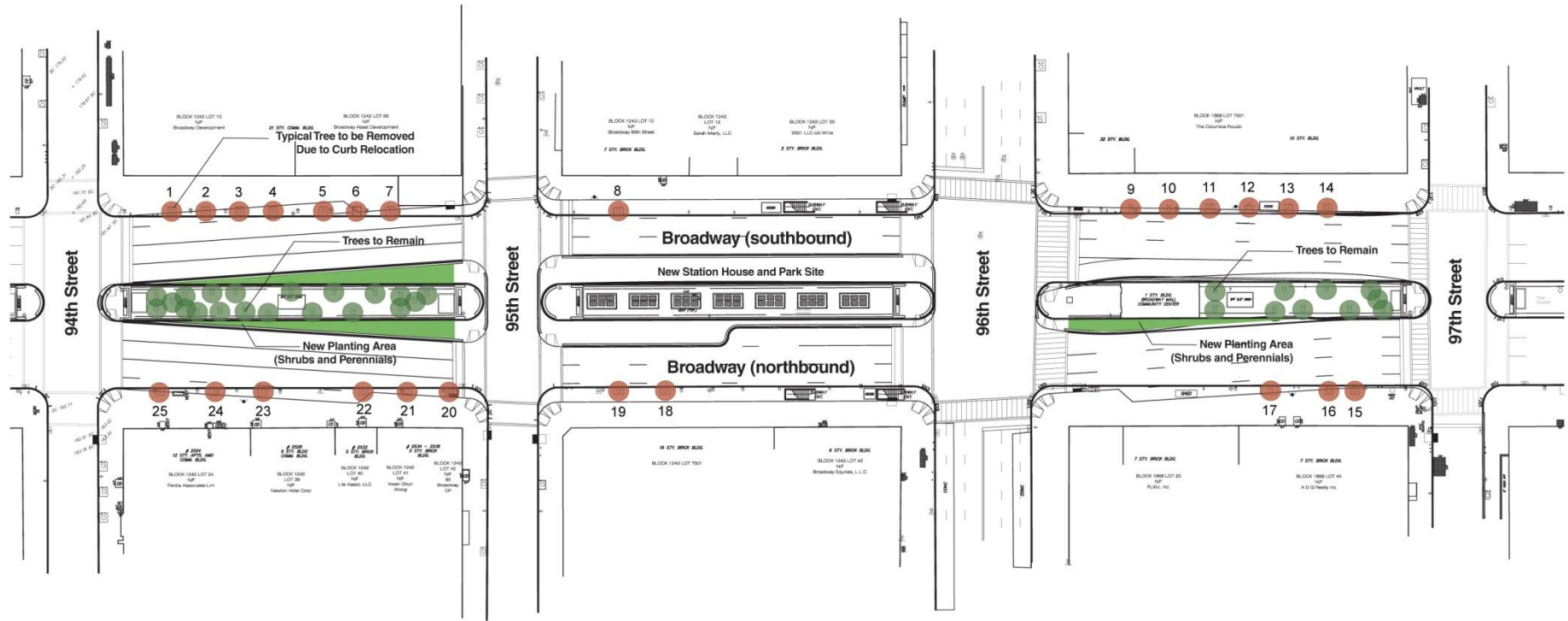
MTA NYC Transit

Urbahn Associates, Inc. • Daniel Frankfurt, PC Joint Venture

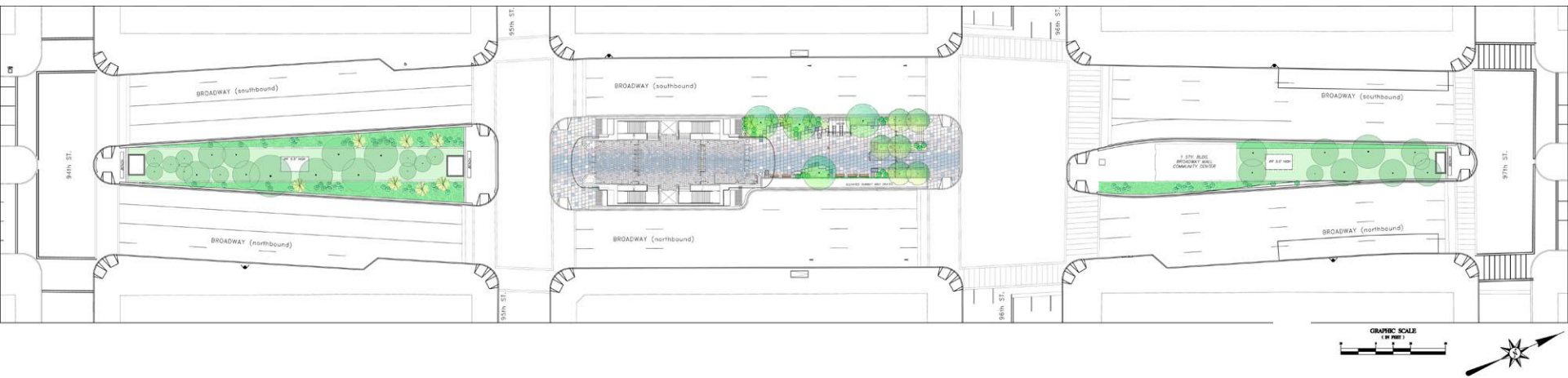
2

3

No Built Site Plan - Trees



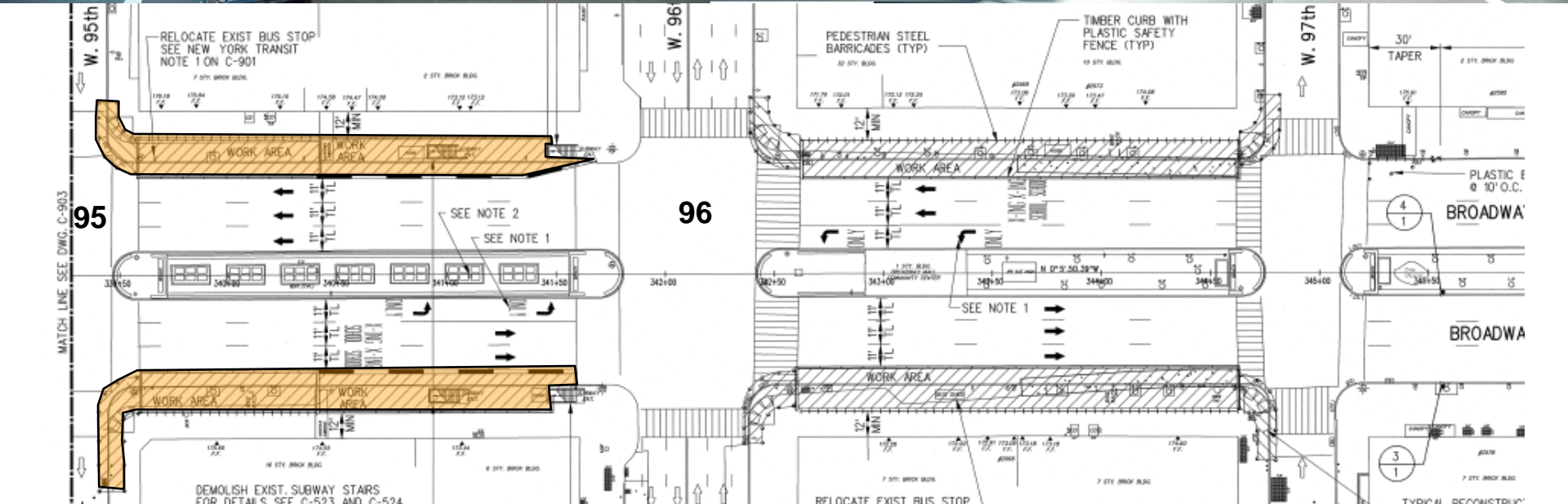
Build Site Plan – Trees



Stage 1B (95th to 96th Sts.)

Work Started mid-February 2008

- Removed trees
- Utility work completed
- Curb and sidewalk work completed
- Relocated bus stop: M104 SB moved between 96th and 97th Streets
- Curb and sidewalk work completed



Work Area Between 95th and 96th Streets

1



MTA NYC Transit

Urbahn Associates, Inc. • Daniel Frankfurt, PC Joint Venture

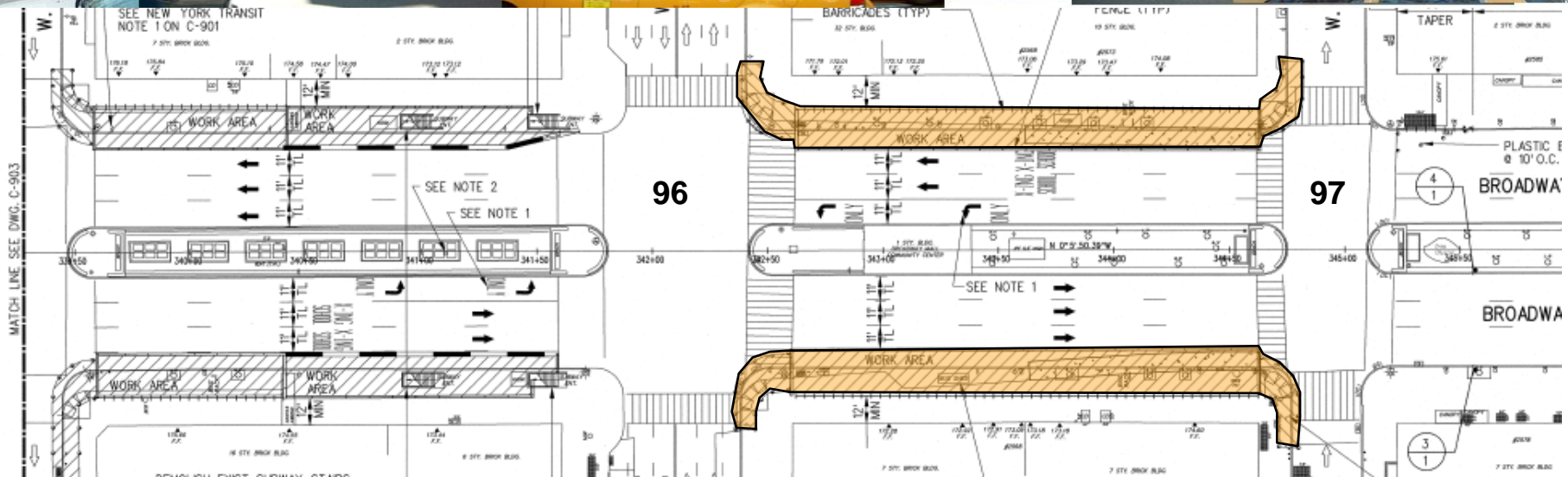
2

3

Stage 1B (96th to 97th Sts.)

Completed in December 2007

- Utility work completed
- Trees Removed
- Bus stop Relocated: M104 N/B moved between 96th St & 97th St)
- Curb and sidewalk work completed
- Relocated Newsstand
- Bus pad installation both sides of Broadway



Work Area Between 96th and 97th Streets

1



MTA NYC Transit

Urbahn Associates, Inc. • Daniel Frankfurt, PC Joint Venture

2

3



Installation of Rubbing Board and Restoration of Track Ceiling



Installation of Beams & Girder for the New Track Roof



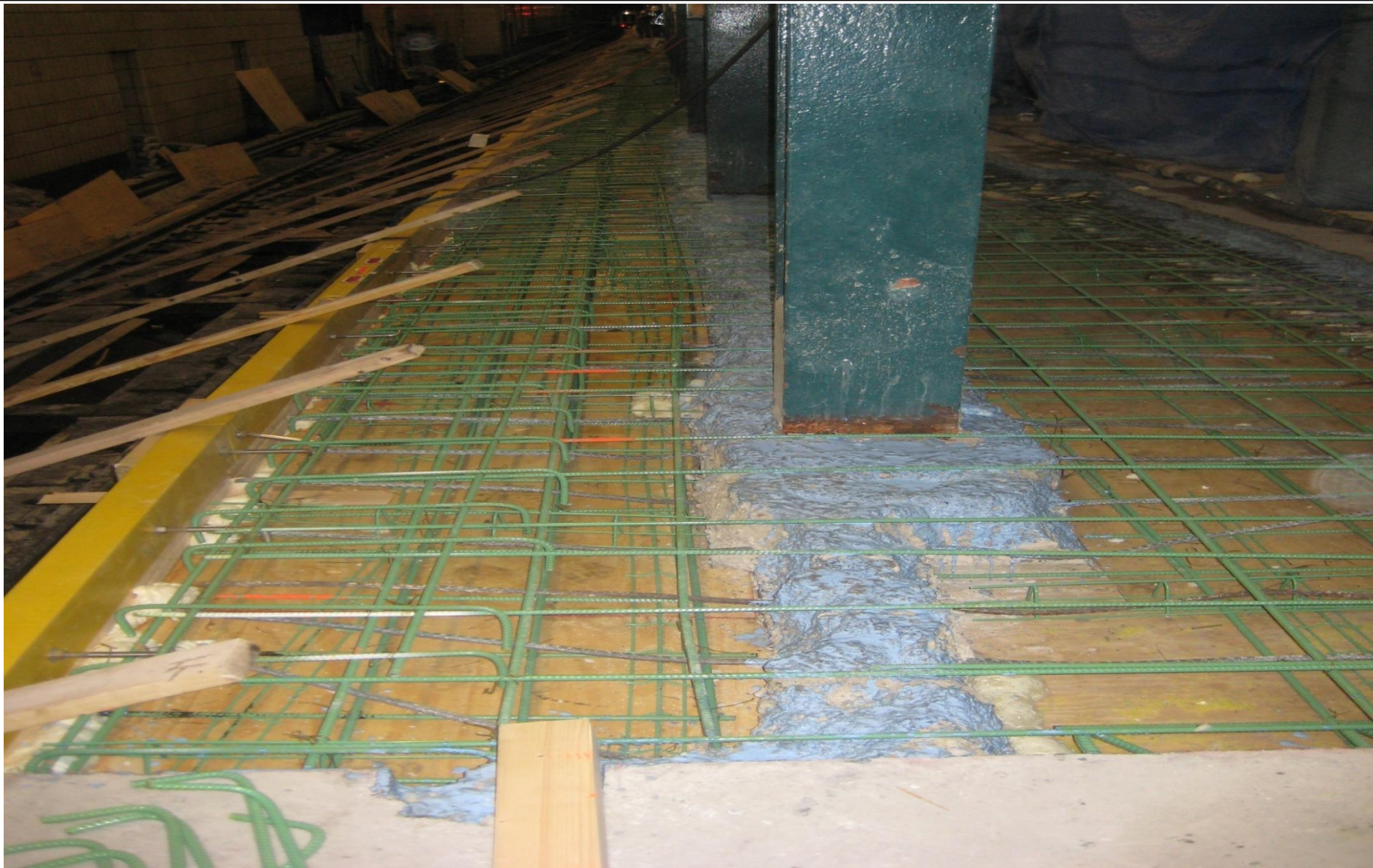
Form for Concrete Pour for Track Ceiling Roof



Track Ceiling with Form Removed

Platform Restoration

- Portions of all station platforms were rebuilt and fitted with tactile tiles edges.

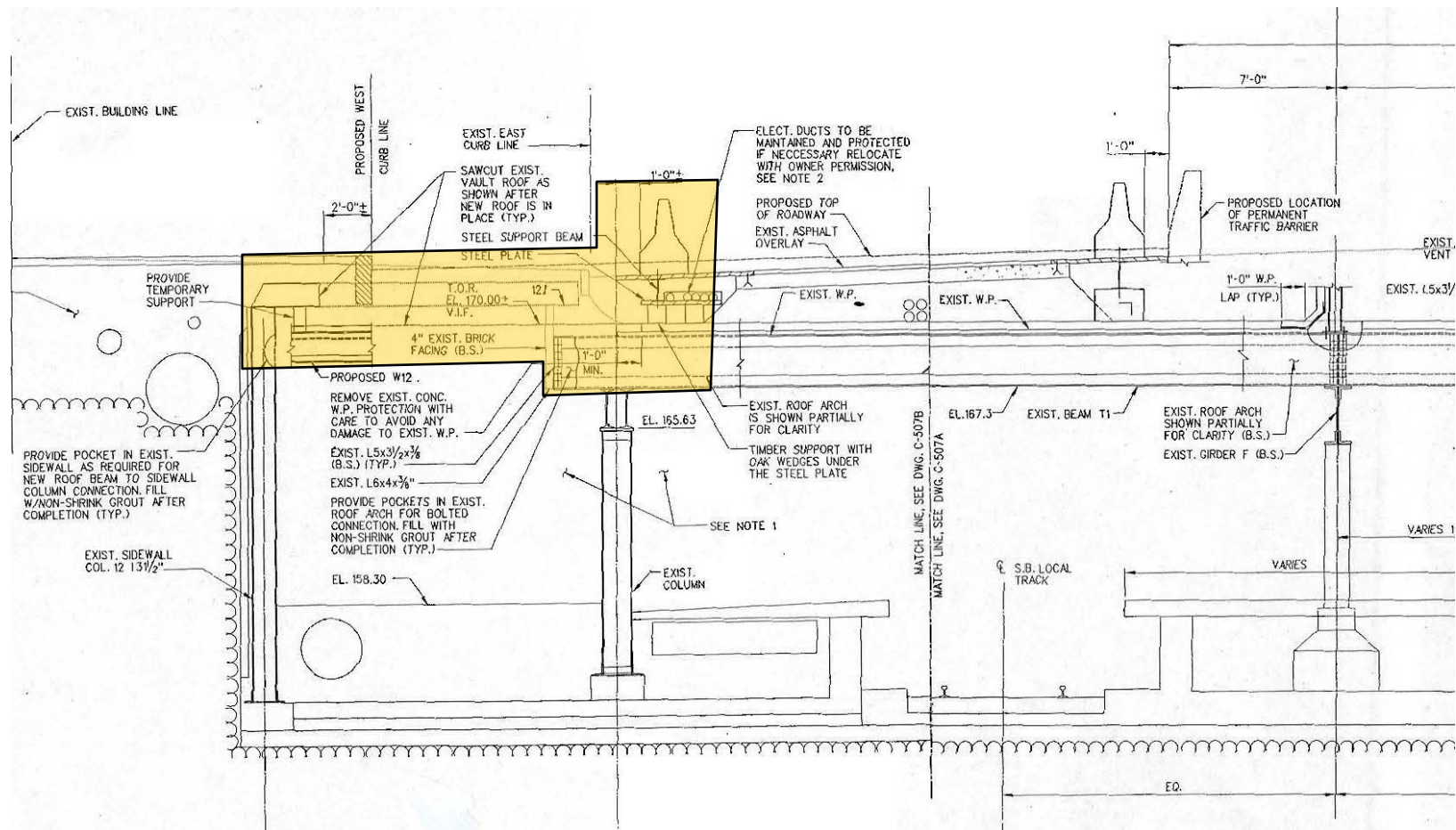


Rebar for Platform and Platform Edge Restoration

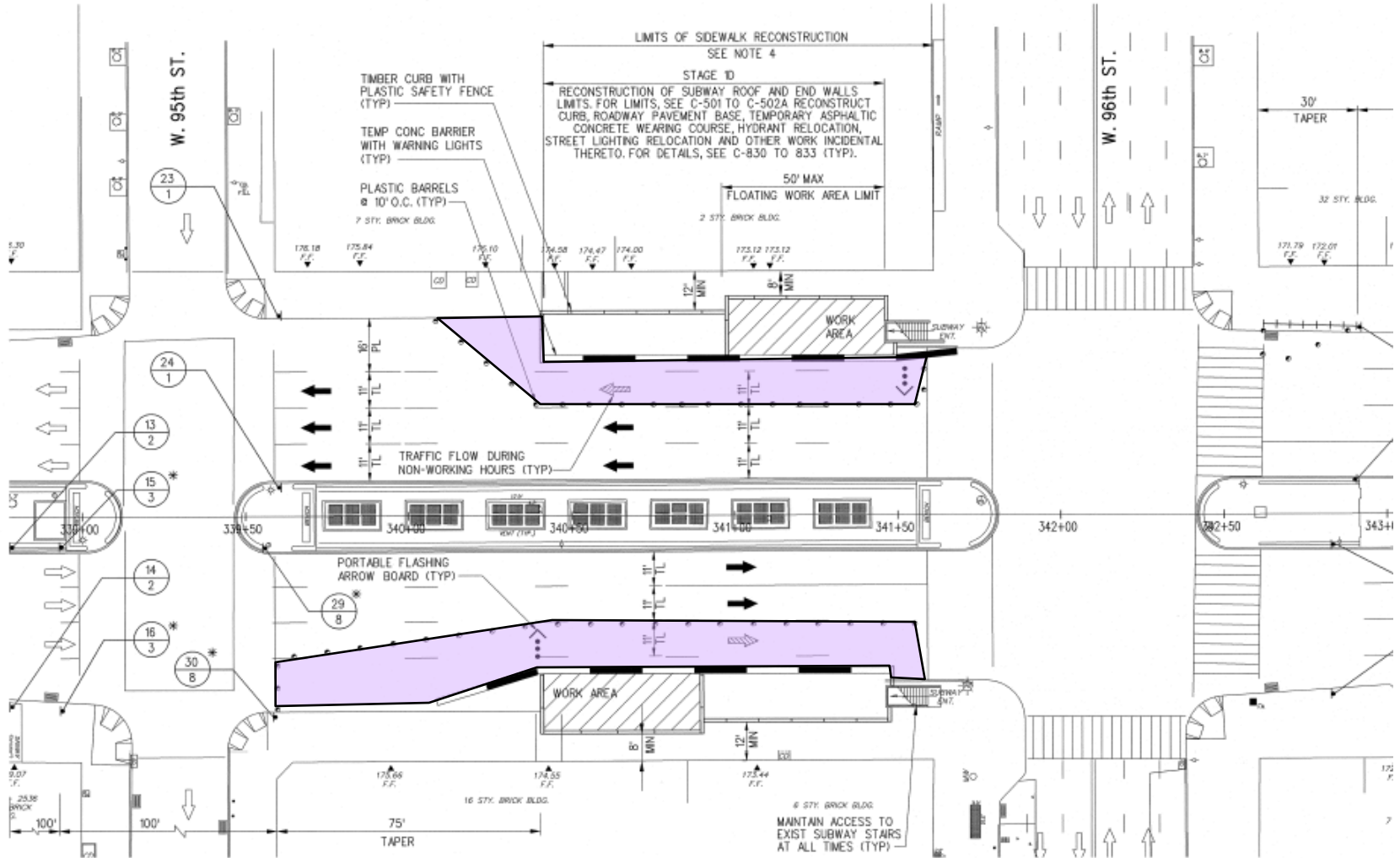


Restored Platform Edge with Tactile Tiles

Structural work and Temporary shoring



Traffic Plan





Chopping of Sidewalk with water Pipe Installation above East Mezzanine



West Side Mezzanine Roof Rebar Ready for Concrete Pour



Mezzanine Roof Restoration



Mezzanine Roof Restoration



Mezzanine Roof Restoration With waterproofing



Mezzanine Roof Restoration



Sidewalk Restoration

1



MTA NYC Transit

Urbahn Associates, Inc. • Daniel Frankfurt, PC Joint Venture

2

3



Sidewalk Restoration

1



MTA NYC Transit

Urbahn Associates, Inc. • Daniel Frankfurt, PC Joint Venture

2

3



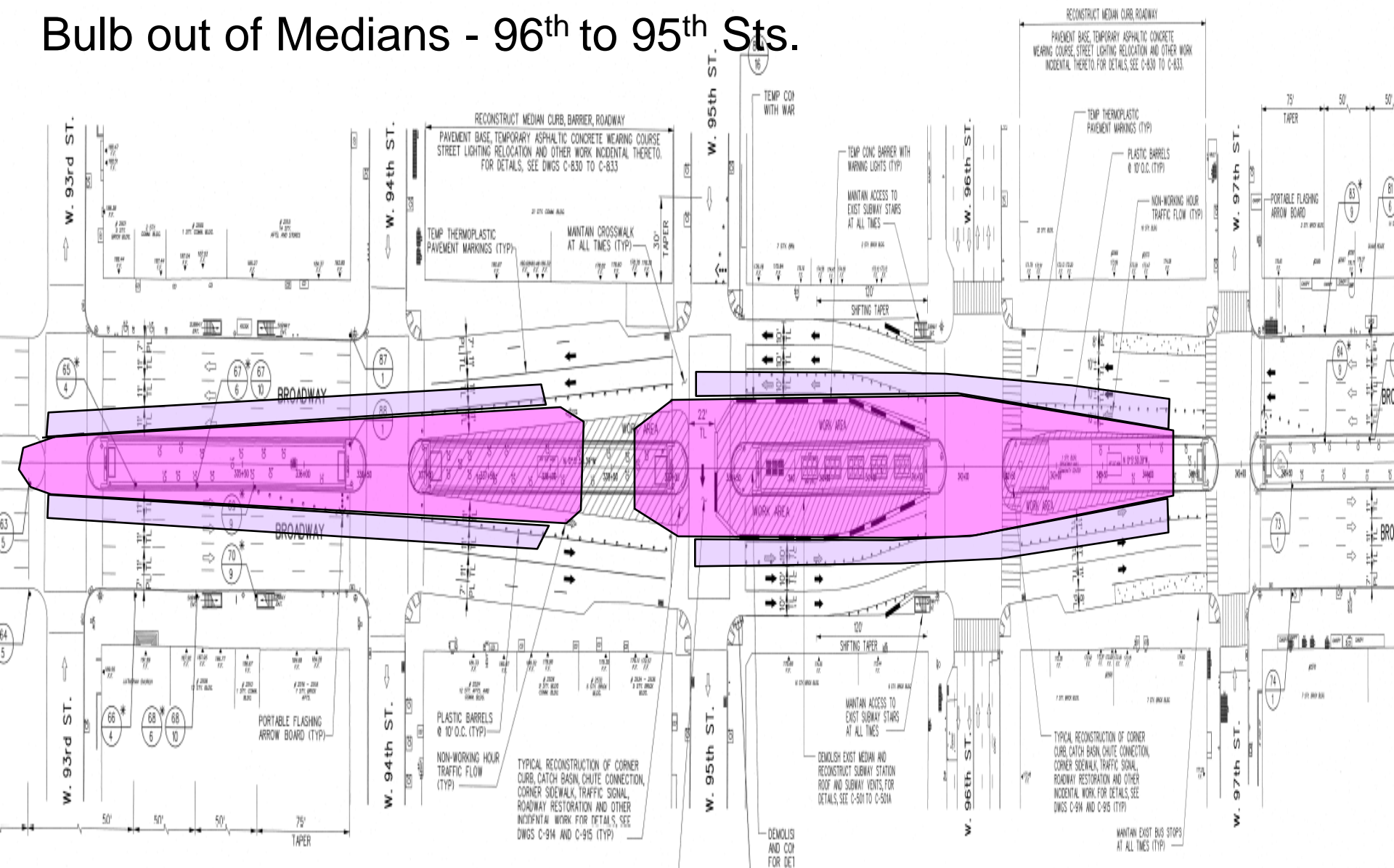
Finished Mezzanine Roof

Stage 2A (95th to 96th Sts.)

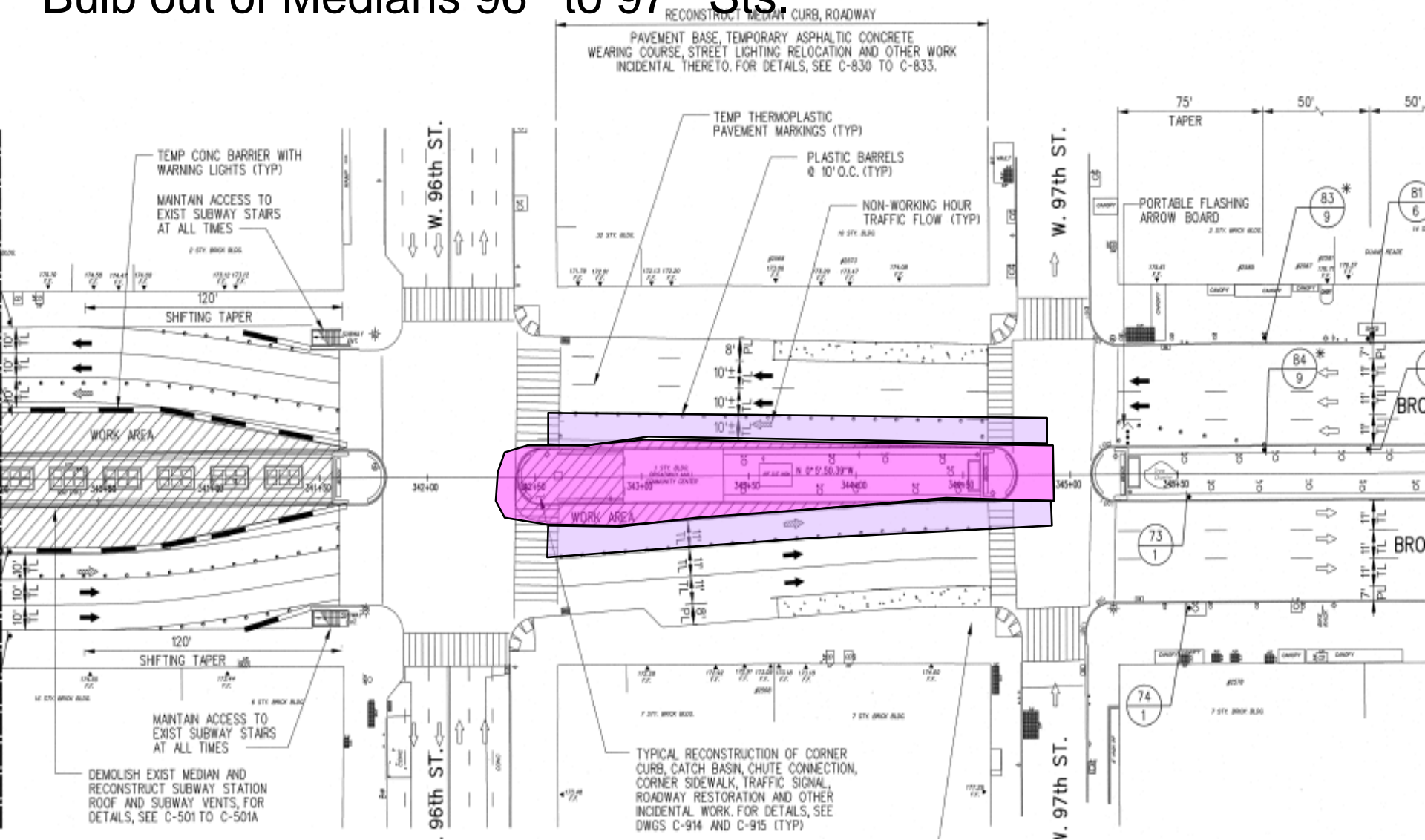
Track Ceiling work – Started January 2008

- Installed temporary beams and shields over express tracks
- Demolition of vent structure completed
- Install curb modifications along Broadway Mall

Bulb out of Medians - 96th to 95th Sts.



Bulb out of Medians 96th to 97th Sts.



Stage 2B (95th to 96th Sts.)

Work Started May 2008

- 2B.1 Installation of new station house column and underpinning (footing)
- Columns installed on the S/B platform only
- 2B.2 Work in progress on the New Station

House Structural Steel (floor and roof)

Phase 2B.2: New Station House - Structural steel

Construction of the Station House and Elevator Infrastructure



Chopping of Broadway Mall For The Plaza

1



MTA NYC Transit

Urbahn Associates, Inc. • Daniel Frankfurt, PC Joint Venture

2

3



Existing steel upon demolition of the median



Rebar for Plaza area Concrete Pour



The Plaza Floor After Concrete Pour

Excavation for and Installation of Columns on the S/B Platform



Chopping of Median and installation of columns For The Station House

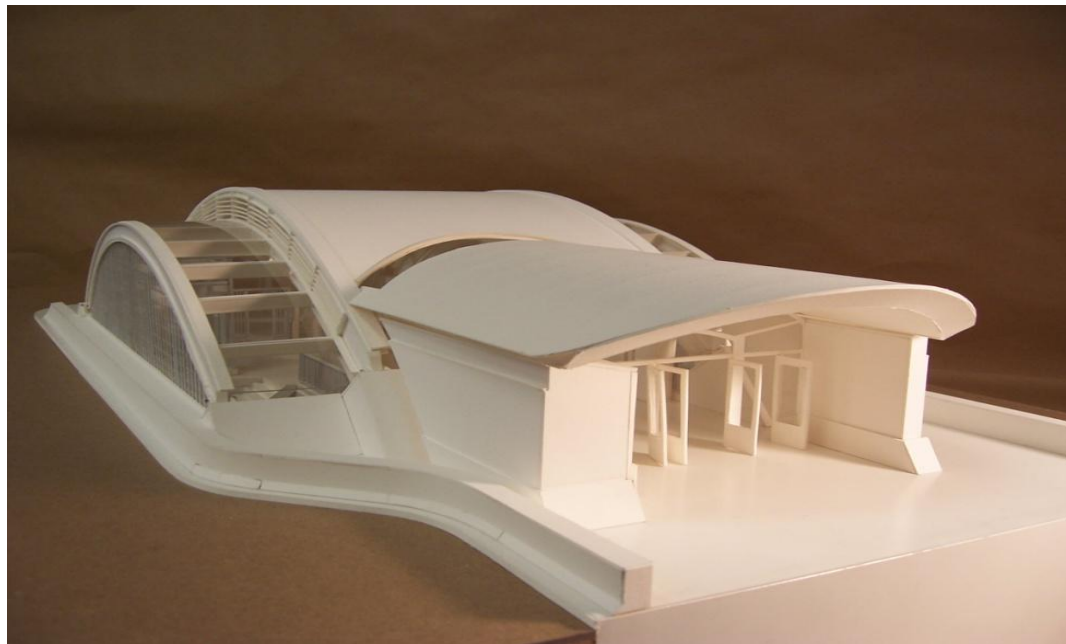
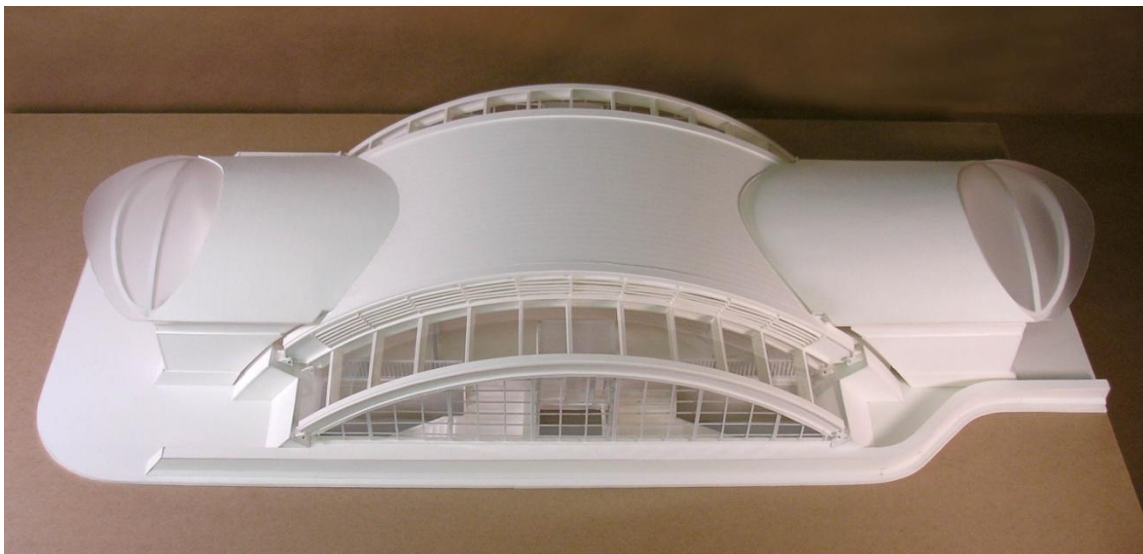


Installed Columns For The Station House at Platform Level



Columns for the Station House at the Platform Level

96th St. Station (A310)
Date: 10/16/06 Photo #
View: SE
Loc.: S/B Platform
Desc.: Bulbino Column









1



MTA NYC Transit

Urbahn Associates, Inc. • Daniel Frankfurt, PC Joint Venture

2

3