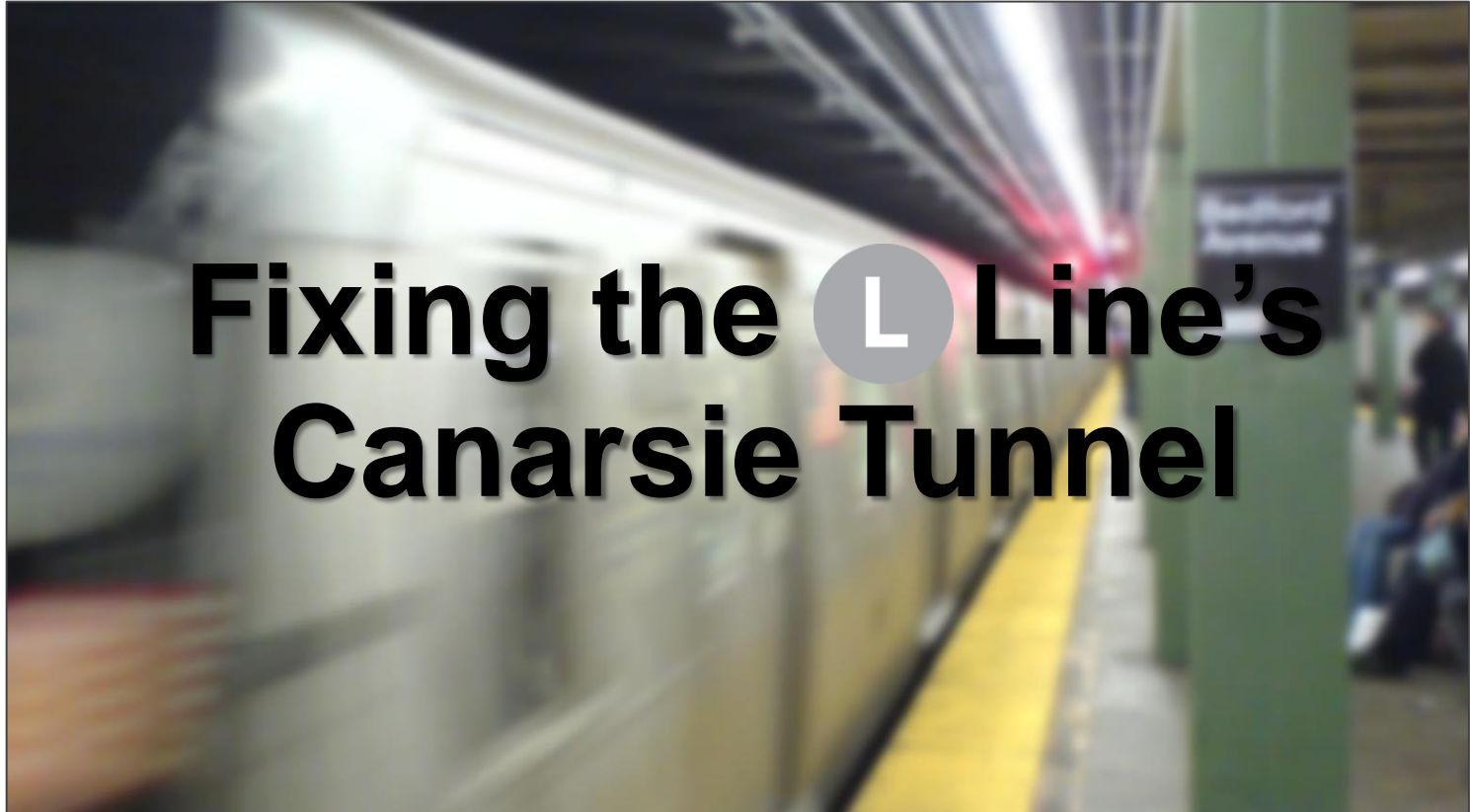




# Fixing the Line's Canarsie Tunnel





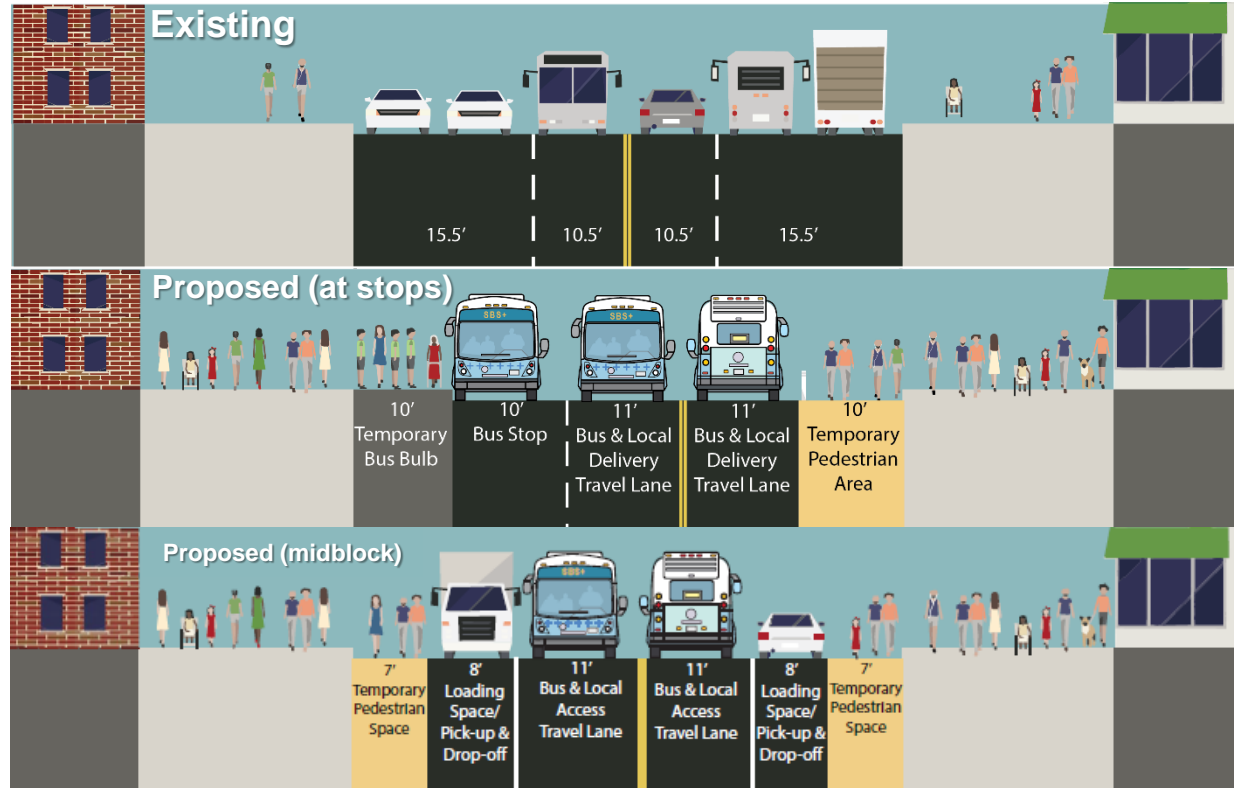
# 14<sup>th</sup> Street Busway



- Implementation is underway
- Work will be complete before the **L** train tunnel closure



# 14<sup>th</sup> Street Busway Design





# Bus Priority Plan





# Williamsburg Bridge HOV3+

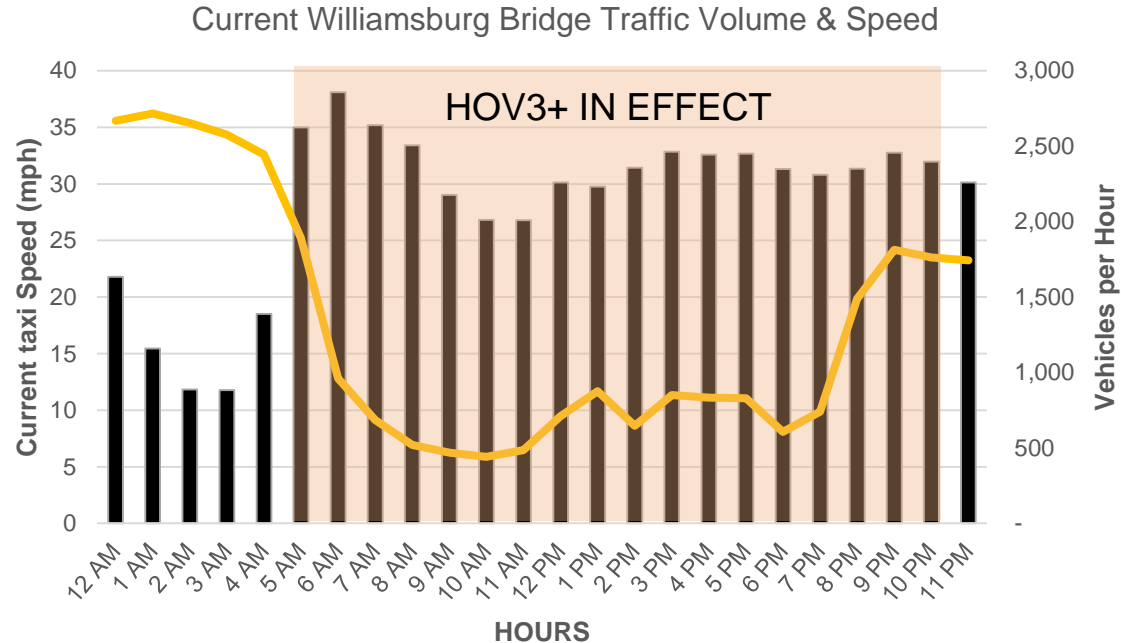
## HOV 3+ Policy:

**5 AM to 10 PM, every day**

- Buses, Trucks & HOV 3+ Only
- Manhattan- and Brooklyn-Bound
- All Lanes

## Key benefits

- 5 AM start discourages early morning congestion before regulation goes into effect
- HOV supports period of highest projected bus ridership demand
- DOT coordinating with NYPD on enforcement staging, strategy





# Environmental Assessment

**Federal Transit Administration (FTA) finalized its assessment of the temporary transportation options which resulted in a “Finding of No Significant Impact”**

## **Highlights:**

- **Buses**
  - 5 electric and 10 hybrid diesel-electric buses by April 2019 for the inter-borough routes
  - 15 articulated electric buses to follow in Q4 2019 for M14 SBS
- **Environmental quality monitoring**
  - Construction monitoring underway
  - FTA did not require mobile source monitoring, however we are working on a plan with an environmental consultant








# Weekend and Overnight Construction

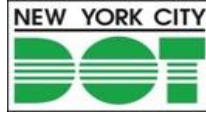
## Closures are necessary to:

- Do maintenance on the  track that will remain in operation
- Prep the construction site with lights, wireless access and more
- Ready the signals for Bedford Av to become a terminal station

## Upcoming closure dates:

- Weekday overnights until mid-November (except Halloween)
- Oct 20-21, Oct 27-28, Nov 10-11, Nov 17-18
- 2019 weekday nights and weekend dates to be finalized soon






# Next Steps

## Fall 2018

- Construction for street modifications on Delancey St, Grand St (BK) and 14<sup>th</sup> St
- Most markings work to be completed by mid-November

## Fall 2018 - March 2019

- Multiple weekend and overnight  closures to support tunnel project
- Final bus priority implementation items (*signage, signal timing, fare machines, etc.*)

## Winter 2019

- Completion of temporary street and/or site modifications for SBS service, bus terminal and parking, and ferry operations

## April 2019

- Start of Canarsie Tunnel Closure, alternative service plan begins





**More information available at:**

[MTA.info/LTunnelReconstruction](https://mta.info/LTunnelReconstruction)

[NYC.gov/LTrainClosure](https://nyc.gov/LTrainClosure)

