

# Contract MED609

## Installation of Truck Water Mains in 9<sup>th</sup> Avenue (W.51<sup>st</sup> Street to W.59<sup>th</sup> Street)

## The Collect Pond New York City's First Reservoir





## Lower Manhattan's First Watermains





# Water Comes To New York City From The Croton Reservoir As Well As The Eastern Catskill. Distances Over 100 Miles

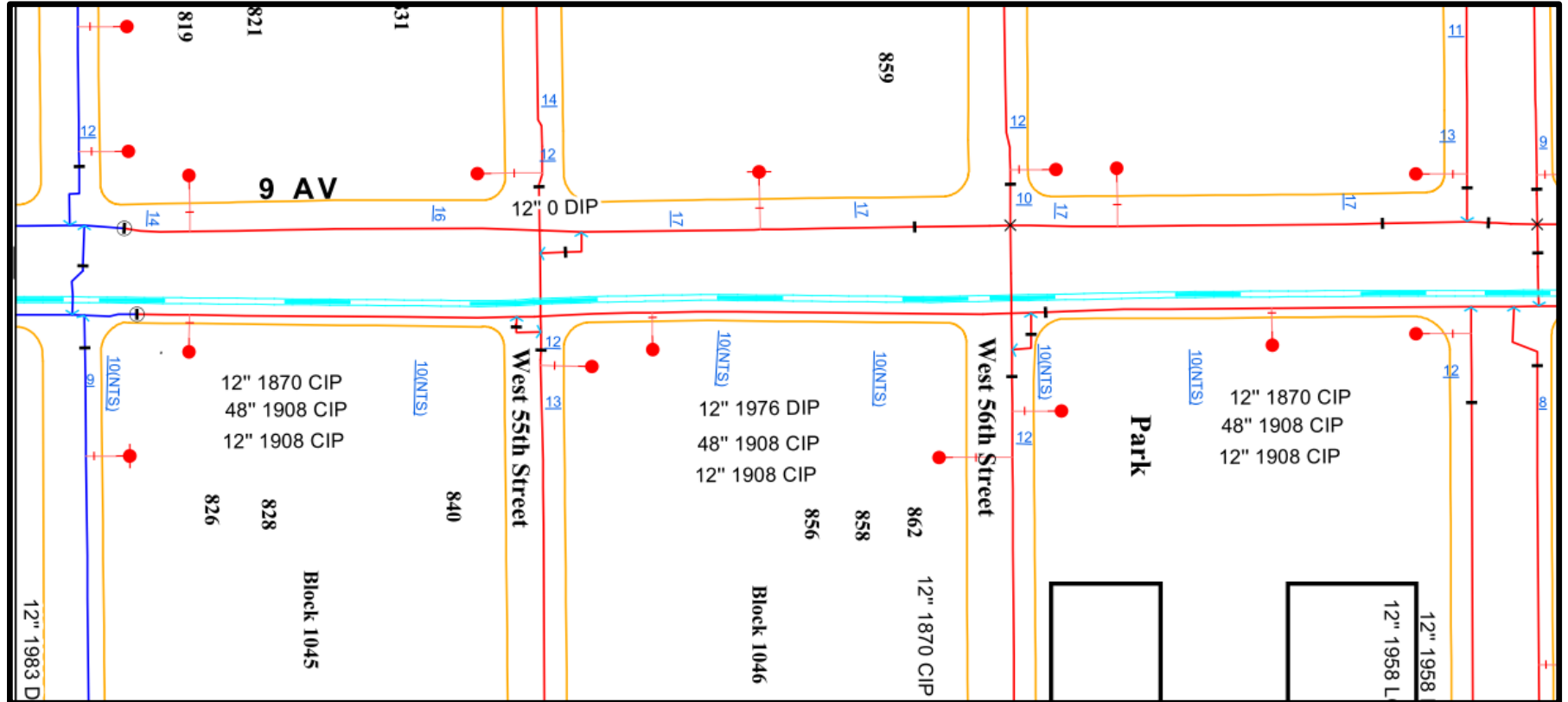
- **Catskill Aqueduct** – completed in 1960 brings water from two reservoirs in the Eastern Catskill Mountains and supplies about 40% of New York City's water needs



Catskill Aqueduct (Image Courtesy [www.nyc.gov](http://www.nyc.gov))



## 9<sup>th</sup> Avenue Water Mains Were Built Between 1870 and 1908



# What Was Going On When These Water Mains Were Being Installed?

1861 to 1865 – The Civil War



1861 to 1865 – Abraham Lincoln is President



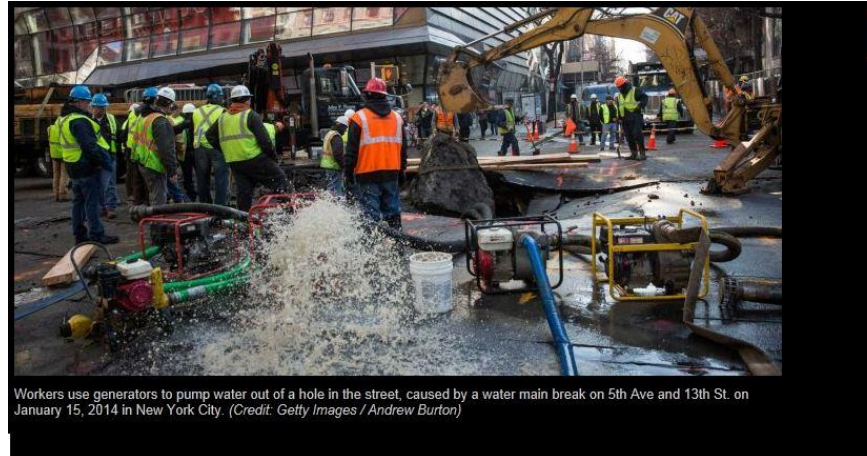
1870 to 1883 – The Brooklyn Bridge is Constructed



\* In the 1800's the population of NYC was approaching one million, today we have 8.5 million.

We have been using the same water mains for nearly 150 years,  
including through two World Wars and 29 US Presidents





NEWS

## Report: New York City's infrastructure needs \$47 billion in repairs

### Water mains

Nearly half of the pipes feeding water to the city were installed before 1940 and about 1,000 miles are more than a century old. While the number of busted pipes dropped in the past decade, water main breaks spiked last year by 10%, to 403. Meanwhile, leaky pipes in 2011 lost 24% of the billion gallons of water distributed in the city each day.

The Department of Environmental Protection has been unable to meet its goal of replacing 68 miles of water pipes a year. The report said the DEP has been hamstrung by requirements to spend billions of dollars on pricey projects mandated by the federal government.

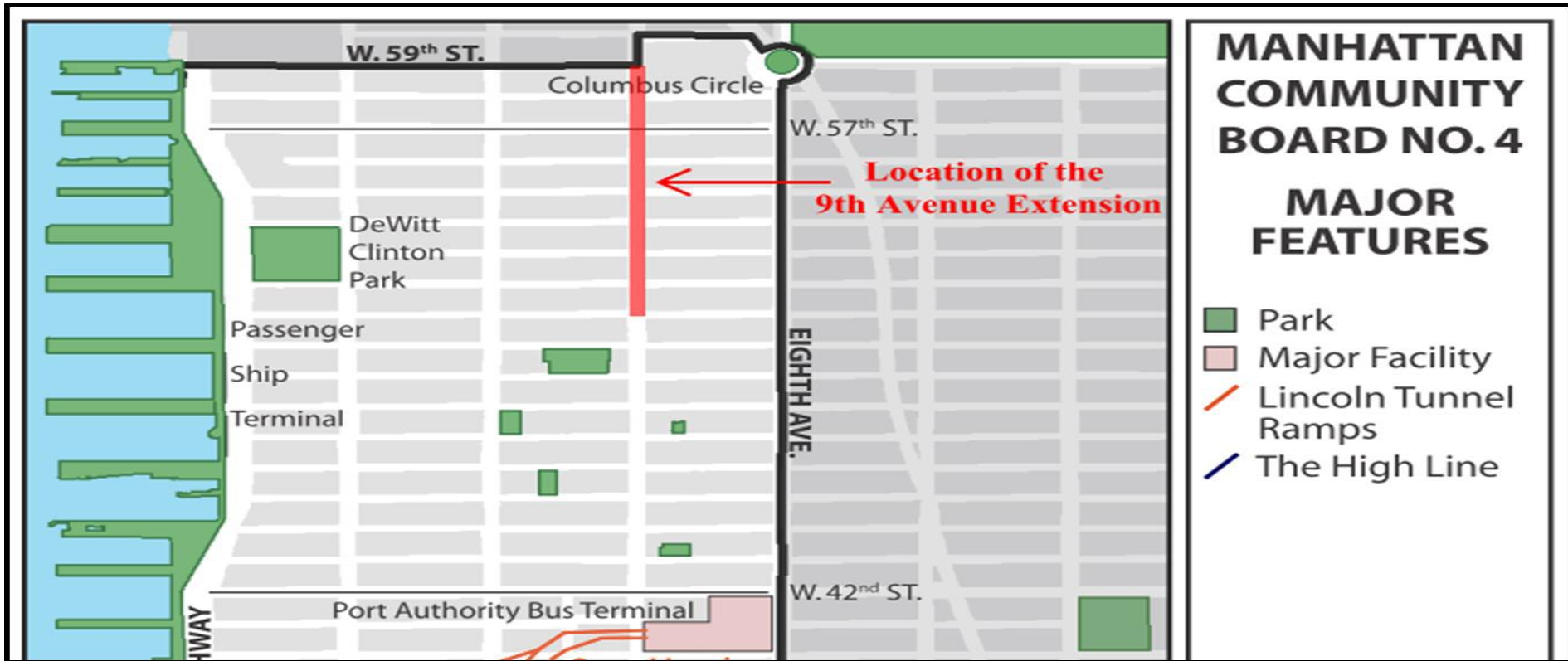


## How Things Were Done Back in The Day





# PROJECT LIMITS



# Project Schedule

	May			June			July			August			September			October			November			December		
9th Avenue Food Festival																								
Set Up Storage Areas																								
Set Up Traffic Control																								
Test Pits Throughout the Project																								
Bike Lane Modifications																								
12" Distribution Main Work (West Side)																								
12" + 20" Water Main Work (East Side)																								
12" ConED Gas Work, West Side																								
20" Gas Main Work																								
Sewer Main Work, W55 to W58																								
Potential Holiday Embargo																								



## 1. DOT Approved Storage Locations

## Common Questions

### 2. How Long Will The Project Last?

The project is estimated to require four years to complete. This includes 2 ½ years of watermain and sewer work and 1 ½ years of ConEd gas and electrical work.

### 3. What Could Influence The Schedule:

- a. ConEd work is specialized. Extreme care must be taken to maintain service as well as safety.
- b. Obtaining a waiver of the winter holiday embargo which is the Friday before Thanksgiving until January 3<sup>rd</sup>.
- c. Rock excavation. Excavation of rock can be a time consuming process depending on the density encountered. Conditions can change dramatically within just a few feet.
- d. The shut down schedule provided by the DEP. The DEP controls all watermain shutdowns.

## Common Questions

### 4. How Will My Trash Get Picked Up?

We will section off the perimeter of our work zone with fencing. At each work zone we will designate a drop off area for trash with access to the curb. We will ask that the residents and businesses cooperate with us by making use of the drop off zone.

It is absolutely necessary that the carting companies (both city and private) cooperate with the effort. We will be asking for help on this from the community.

#### **Carting Companies We Have Contact Information For:**

IESI

Best Waste Carting

Royal Waste Inc.

City Waste Service

Action Carting

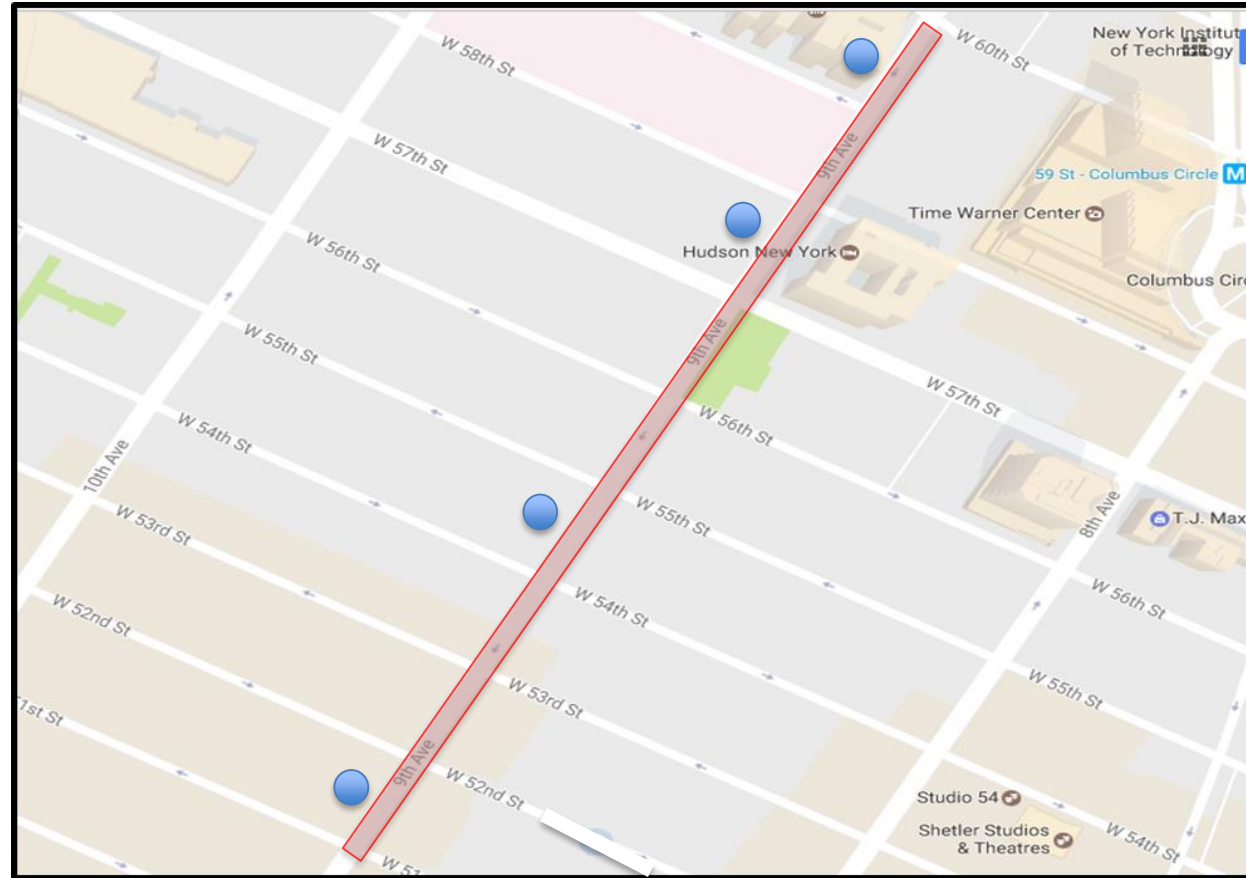
Century Waste

Bravo Carting Company

Five Star Carting

## 5. Will Bus Stops Need To Be Relocated?

● = Bus Stop





## Common Questions

### **6. Will There Be Working On Nights or Weekends?**

Our contract permits daytime work weekdays and weekends. Night time hours are not included. If night work is necessary, a location specific permit will be applied for.

Night work, weekend work and overtime will be avoided. In the event that it becomes necessary Wayan Brown will notify the Community.

### **7. Will the 57<sup>th</sup> Street Farmers Market (GrowNYC) Have To Be Moved?**

Our work does not impact the sidewalk area utilized by the market.

Parking may be compromised at times. GrowNYC will plan accordingly.

# KEEPING YOU INFORMED

- Wayan Brown is the Community Construction Liaison (CCL).

Responsible for:

- Communication between the project and the community
- Taking all project related questions and field inquiries
- Assisting with coordination between the project and stakeholders
- Providing updates and advisories to the community regarding construction activity

- Wayan's Contact Information:

<u>Name:</u>	Wayan Brown
<u>Email:</u>	W60thstreetccl@gmail.com
<u>Field Office:</u>	333 W.52 <sup>nd</sup> Street, Suite 406
<u>Telephone :</u>	(646) 738-4894
- DDC Website: [www.nyc.gov/ddc](http://www.nyc.gov/ddc)
- DDC Video: [www.nyc.gov/webuild](http://www.nyc.gov/webuild)
- During Non-Working hours, please call 311 and give the Project ID: MED609

